



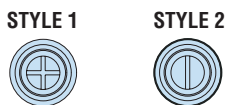
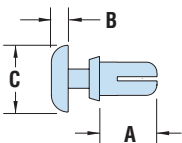
## HEYClip™ Snap Rivets

- Designed for **fast and easy installation with no tools** - just fingertip pressure required.
- Simply place rivet into the hole and press down on the head to fasten; legs expand to securely fasten components.
- To release, simply pull up on rivet head section.
- Round head provides a clean, finished look.
- Part Description Key: PR X-Y where X = Mounting Hole Diameter (inches) and Y = minimum Panel Thickness (inches).
- Standard Material: Nylon 6. Nylon 6/6 UL 94V-0 available by special order, consult Heyco.
- Standard Pack - 1,000/bag.

| WILL FIT THESE PANELS |     |                           |          | PART NO. |       |              | DESCRIPTION  | PART DIMENSIONS |            |               |      |                 |     | EXTRACTION FORCE |       |     |             |
|-----------------------|-----|---------------------------|----------|----------|-------|--------------|--------------|-----------------|------------|---------------|------|-----------------|-----|------------------|-------|-----|-------------|
| MOUNTING HOLE DIA.    |     | ASSEMBLED PANEL THICKNESS |          | Black    | White | V-0 Black *  |              | A Length        |            | B Head Height |      | C Head Diameter |     | N                | Style |     |             |
| in.                   | mm. | Min. in.                  | Max. mm. |          |       |              |              | in.             | mm.        | in.           | mm.  | in.             | mm. |                  |       | in. | mm.         |
| <b>PR Series</b>      |     |                           |          |          |       |              |              |                 |            |               |      |                 |     |                  |       |     |             |
| .083                  | 2,1 | .02                       | 0,5      | .05      | 1,3   | <b>9296</b>  | <b>9297</b>  | <b>9296F</b>    | PR 083-024 | .10           | 2,5  |                 |     |                  |       |     |             |
|                       |     | .05                       | 1,3      | .08      | 2,0   | <b>9300</b>  | <b>9301</b>  | <b>9300F</b>    | PR 083-051 | .13           | 3,3  |                 |     |                  |       |     |             |
|                       |     | .08                       | 2,0      | .11      | 2,8   | <b>9302</b>  | <b>9303</b>  | <b>9302F</b>    | PR 083-083 | .16           | 4,1  | .05             | 1,3 | .17              | 4,3   | 29  | 2           |
|                       |     | .11                       | 2,8      | .14      | 3,6   | <b>9304</b>  | <b>9305</b>  | <b>9304F</b>    | PR 083-114 | .19           | 4,8  |                 |     |                  |       |     |             |
|                       |     | .15                       | 3,8      | .17      | 4,3   | <b>9306</b>  | <b>9307</b>  | <b>9306F</b>    | PR 083-146 | .22           | 5,6  |                 |     |                  |       |     |             |
|                       |     | .17                       | 4,3      | .20      | 5,1   | <b>9308</b>  | <b>9309</b>  | <b>9308F</b>    | PR 083-173 | .25           | 6,4  |                 |     |                  |       |     |             |
| .102                  | 2,6 | .04                       | 1,0      | .08      | 2,0   | <b>9020</b>  | <b>9021</b>  | <b>9020F</b>    | PR 102-039 | .13           | 3,3  |                 |     |                  |       |     |             |
|                       |     | .08                       | 2,0      | .12      | 3,0   | <b>9022</b>  | <b>9023</b>  | <b>9022F</b>    | PR 102-082 | .17           | 4,3  |                 |     |                  |       |     |             |
|                       |     | .11                       | 2,8      | .14      | 3,6   | <b>9024</b>  | <b>9025</b>  | <b>9024F</b>    | PR 102-106 | .19           | 4,8  | .06             | 1,5 | .20              | 5,1   | 49  | 2           |
|                       |     | .13                       | 3,3      | .17      | 4,3   | <b>9026</b>  | <b>9027</b>  | <b>9026F</b>    | PR 102-134 | .22           | 5,6  |                 |     |                  |       |     |             |
|                       |     | .17                       | 4,3      | .21      | 5,3   | <b>9310</b>  | <b>9311</b>  | <b>9310F</b>    | PR 102-169 | .25           | 6,4  |                 |     |                  |       |     |             |
|                       |     | .20                       | 5,1      | .24      | 6,1   | <b>9312</b>  | <b>9313</b>  | <b>9312F</b>    | PR 102-201 | .28           | 7,1  |                 |     |                  |       |     |             |
| .106                  | 2,7 | .13                       | 3,3      | .17      | 4,3   | <b>19000</b> | <b>19001</b> | <b>19000F</b>   | PR 106-133 | .23           | 5,8  | .06             | 1,5 | .20              | 5,1   | 49  | <b>NEW!</b> |
| .118                  | 3,0 | .14                       | 3,5      | .18      | 4,6   | <b>19002</b> | <b>19003</b> | <b>19002F</b>   | PR 118-137 | .30           | 7,6  | .07             | 1,8 | .24              | 6,1   | 122 | <b>NEW!</b> |
|                       |     | .14                       | 3,5      | .22      | 5,6   | <b>19004</b> | <b>19005</b> | <b>19004F</b>   | PR 118-138 | .31           | 7,9  | .06             | 1,5 | .24              | 6,1   |     | <b>NEW!</b> |
| .122                  | 3,1 | .04                       | 1,0      | .08      | 2,0   | <b>9028</b>  | <b>9029</b>  | <b>9028F</b>    | PR 122-039 | .14           | 3,5  |                 |     |                  |       |     |             |
|                       |     | .08                       | 2,0      | .12      | 3,0   | <b>9030</b>  | <b>9031</b>  | <b>9030F</b>    | PR 122-079 | .18           | 4,6  |                 |     |                  |       |     |             |
|                       |     | .12                       | 3,0      | .16      | 4,1   | <b>9032</b>  | <b>9033</b>  | <b>9032F</b>    | PR 122-118 | .22           | 5,6  |                 |     |                  |       |     |             |
|                       |     | .16                       | 4,1      | .19      | 4,8   | <b>9034</b>  | <b>9035</b>  | <b>9034F</b>    | PR 122-157 | .26           | 6,6  |                 |     |                  |       |     |             |
|                       |     | .20                       | 5,1      | .24      | 6,1   | <b>9036</b>  | <b>9037</b>  | <b>9036F</b>    | PR 122-197 | .30           | 7,6  |                 |     |                  |       |     |             |
|                       |     | .22                       | 5,5      | .26      | 6,6   | <b>9038</b>  | <b>9039</b>  | <b>9038F</b>    | PR 122-217 | .32           | 8,1  | .06             | 1,5 | .25              | 6,4   | 78  | 2           |
|                       |     | .26                       | 6,6      | .30      | 7,6   | <b>9040</b>  | <b>9041</b>  | <b>9040F</b>    | PR 122-256 | .35           | 8,9  |                 |     |                  |       |     |             |
|                       |     | .30                       | 7,6      | .34      | 8,6   | <b>9042</b>  | <b>9043</b>  | <b>9042F</b>    | PR 122-295 | .39           | 9,9  |                 |     |                  |       |     |             |
|                       |     | .45                       | 11,4     | .51      | 13,0  | <b>9314</b>  | <b>9315</b>  | <b>9314F</b>    | PR 122-453 | .57           | 14,5 |                 |     |                  |       |     |             |
|                       |     | .81                       | 20,6     | .85      | 21,6  | <b>9316</b>  | <b>9317</b>  | <b>9316F</b>    | PR 122-807 | .91           | 23,1 |                 |     |                  |       |     |             |
| .142                  | 3,6 | .05                       | 1,3      | .08      | 2,0   | <b>9044</b>  | <b>9045</b>  | <b>9044F</b>    | PR 142-047 | .14           | 3,5  |                 |     |                  |       |     |             |
|                       |     | .08                       | 2,0      | .12      | 3,0   | <b>9046</b>  | <b>9047</b>  | <b>9046F</b>    | PR 142-083 | .18           | 4,6  |                 |     |                  |       |     |             |
|                       |     | .11                       | 2,8      | .14      | 3,6   | <b>9048</b>  | <b>9049</b>  | <b>9048F</b>    | PR 142-106 | .20           | 5,1  | .06             | 1,5 | .25              | 6,4   | 118 | 1           |
|                       |     | .12                       | 3,0      | .16      | 4,1   | <b>9050</b>  | <b>9051</b>  | <b>9050F</b>    | PR 142-118 | .22           | 5,6  |                 |     |                  |       |     |             |
|                       |     | .15                       | 3,8      | .18      | 4,6   | <b>9052</b>  | <b>9053</b>  | <b>9052F</b>    | PR 142-146 | .24           | 6,1  |                 |     |                  |       |     |             |
|                       |     | .18                       | 4,6      | .22      | 5,6   | <b>9054</b>  | <b>9055</b>  | <b>9054F</b>    | PR 142-177 | .28           | 7,1  |                 |     |                  |       |     |             |
| .157                  | 4,0 | .09                       | 2,3      | .11      | 2,8   | <b>19006</b> | <b>19007</b> | <b>19006F</b>   | PR 157-086 | .22           | 5,6  | .08             | 2,0 | .31              | 7,9   | 196 | 1           |
|                       |     | .21                       | 5,3      | .24      | 6,1   | <b>19008</b> | <b>19009</b> | <b>19008F</b>   | PR 157-212 | .31           | 7,9  | .07             | 1,8 | .32              | 8,1   |     | <b>NEW!</b> |
|                       |     | .41                       | 10,4     | .45      | 11,4  | <b>19010</b> | <b>19011</b> | <b>19010F</b>   | PR 157-413 | .53           | 13,5 | .08             | 2,0 | .31              | 7,9   | 196 | 2           |
|                       |     |                           |          |          |       |              |              |                 |            |               |      |                 |     |                  |       |     | <b>NEW!</b> |
| .161                  | 4,1 | .10                       | 2,5      | .14      | 3,5   | <b>9058</b>  | <b>9059</b>  | <b>9058F</b>    | PR 161-098 | .20           | 5,1  |                 |     |                  |       |     |             |
|                       |     | .14                       | 3,5      | .18      | 4,6   | <b>9060</b>  | <b>9061</b>  | <b>9060F</b>    | PR 161-138 | .24           | 6,1  |                 |     |                  |       |     |             |
|                       |     | .18                       | 4,6      | .22      | 5,6   | <b>9062</b>  | <b>9063</b>  | <b>9062F</b>    | PR 161-177 | .28           | 7,1  |                 |     |                  |       |     |             |
|                       |     | .22                       | 5,6      | .26      | 6,6   | <b>9064</b>  | <b>9065</b>  | <b>9064F</b>    | PR 161-217 | .32           | 8,1  | .07             | 1,8 | .32              | 8,1   | 196 | 1           |
|                       |     | .26                       | 6,6      | .30      | 7,6   | <b>9066</b>  | <b>9067</b>  | <b>9066F</b>    | PR 161-256 | .35           | 8,9  |                 |     |                  |       |     |             |
|                       |     | .30                       | 7,6      | .34      | 8,6   | <b>9068</b>  | <b>9069</b>  | <b>9068F</b>    | PR 161-295 | .39           | 9,9  |                 |     |                  |       |     |             |
|                       |     | .35                       | 8,9      | .41      | 10,4  | <b>9318</b>  | <b>9319</b>  | <b>9318F</b>    | PR 161-354 | .47           | 11,9 |                 |     |                  |       |     |             |
|                       |     | .49                       | 12,4     | .55      | 14,0  | <b>9320</b>  | <b>9321</b>  | <b>9320F</b>    | PR 161-492 | .61           | 15,5 |                 |     |                  |       |     |             |

Available in Small Packs **NEW**

| PART NO.      |               | DESCRIPTION      | QTY |
|---------------|---------------|------------------|-----|
| Black         | White         |                  |     |
| <b>9028-P</b> | <b>9029-P</b> | PR 122-039 100PK | 100 |
| <b>9030-P</b> | <b>9031-P</b> | PR 122-079 100PK |     |
| <b>9032-P</b> | <b>9033-P</b> | PR 122-118 100PK |     |
| <b>9034-P</b> | <b>9035-P</b> | PR 122-157 100PK |     |
| <b>9036-P</b> | <b>9037-P</b> | PR 122-197 100PK |     |
| <b>9038-P</b> | <b>9039-P</b> | PR 122-217 100PK |     |
| <b>9058-P</b> | <b>9059-P</b> | PR 161-098 50PK  | 50  |
| <b>9060-P</b> | <b>9061-P</b> | PR 161-138 50PK  |     |
| <b>9062-P</b> | <b>9063-P</b> | PR 161-177 50PK  |     |
| <b>9064-P</b> | <b>9065-P</b> | PR 161-217 50PK  |     |
| <b>9066-P</b> | <b>9067-P</b> | PR 161-256 50PK  |     |
| <b>9068-P</b> | <b>9069-P</b> | PR 161-295 50PK  |     |
| <b>9074-P</b> | <b>9075-P</b> | PR 201-138 50PK  |     |
| <b>9076-P</b> | <b>9077-P</b> | PR 201-177 50PK  |     |
| <b>9078-P</b> | <b>9079-P</b> | PR 201-217 50PK  |     |
| <b>9080-P</b> | <b>9081-P</b> | PR 201-256 50PK  |     |
| <b>9082-P</b> | <b>9083-P</b> | PR 201-295 50PK  |     |
| <b>9084-P</b> | <b>9085-P</b> | PR 240-098 20PK  | 20  |
| <b>9324-P</b> | <b>9325-P</b> | PR 240-138 20PK  |     |



Quick Specs

Standard colors black and white.  
\*Black nylon 6/6 UL 94V-0.

|                     |                                |
|---------------------|--------------------------------|
| Material            | Nylon 6 UL V-2                 |
| Flammability Rating | 94V-2                          |
| Temperature Range   | -40°F (-40°C) to 239°F (115°C) |

“Stay Connected” with



HEYware Products

a PennEngineering® Company

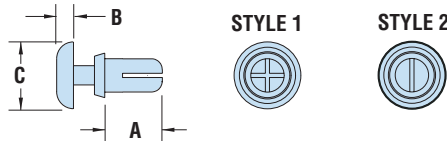


## HEYClip™ Snap Rivets – continued

| WILL FIT THESE PANELS |                           |     |       | PART NO. |             |          | DESCRIPTION | PART DIMENSIONS |            |                 |      |     |       | EXTRACTION FORCE |      |     |   |
|-----------------------|---------------------------|-----|-------|----------|-------------|----------|-------------|-----------------|------------|-----------------|------|-----|-------|------------------|------|-----|---|
| MOUNTING HOLE DIA.    | ASSEMBLED PANEL THICKNESS |     | Black | White    | V-0 Black * | A Length |             | B Head Height   |            | C Head Diameter |      | N   | Style |                  |      |     |   |
|                       | in.                       | mm. |       |          |             |          | Min.        | Max.            | in.        | mm.             | in.  |     |       | mm.              | in.  | mm. |   |
| <b>PR Series</b>      |                           |     |       |          |             |          |             |                 |            |                 |      |     |       |                  |      |     |   |
| .201                  | 5,1                       | .06 | 1,5   | .10      | 2,5         | 9070     | 9071        | 9070F           | PR 201-059 | .18             | 4,6  |     |       |                  |      | 245 | 1 |
|                       |                           | .10 | 2,5   | .14      | 3,5         | 9072     | 9073        | 9072F           | PR 201-098 | .22             | 5,6  |     |       |                  |      |     |   |
|                       |                           | .14 | 3,5   | .18      | 4,6         | 9074     | 9075        | 9074F           | PR 201-138 | .26             | 6,6  |     |       |                  |      |     |   |
|                       |                           | .18 | 4,6   | .22      | 5,6         | 9076     | 9077        | 9076F           | PR 201-177 | .30             | 7,6  | .09 | 2,3   | .35              | 8,9  |     |   |
|                       |                           | .22 | 5,6   | .26      | 6,6         | 9078     | 9079        | 9078F           | PR 201-217 | .34             | 8,6  |     |       |                  |      |     |   |
|                       |                           | .26 | 6,6   | .30      | 7,6         | 9080     | 9081        | 9080F           | PR 201-256 | .37             | 9,4  |     |       |                  |      |     |   |
|                       |                           | .30 | 7,6   | .34      | 8,6         | 9082     | 9083        | 9082F           | PR 201-295 | .41             | 10,4 |     |       |                  |      |     |   |
| .232                  | 5,9                       | .12 | 3,0   | .16      | 4,1         | 9322     | 9323        | 9322F           | PR 232-118 | .25             | 6,4  | .11 | 2,8   | .47              | 11,9 |     |   |
| .240                  | 6,1                       | .10 | 2,5   | .16      | 4,1         | 9084     | 9085        | 9084F           | PR 240-098 | .24             | 6,1  | .10 | 2,5   |                  |      | 294 |   |
|                       |                           | .14 | 3,5   | .22      | 5,6         | 9324     | 9325        | 9324F           | PR 240-138 | .32             | 8,1  | .12 | 3,0   |                  |      |     |   |

Standard colors black and white.

\*Black nylon 6/6 UL 94V-0.



- Designed for **fast and easy installation with no tools** - just fingertip pressure required.
- Simply place rivet into the hole and press down on the head to fasten; legs expand to securely fasten components.
- To release, simply pull up on rivet head section.
- Round head provides a clean, finished look.
- Part Description Key: PR X-Y where X = Mounting Hole Diameter (inches) and Y = minimum Panel Thickness (inches).
- Standard Material: Nylon 6. Nylon 6/6 UL 94V-0 available by special order, consult Heyco.
- Standard Pack - 1,000/bag.
- See Quick Specs on opposite page.

## HEYClip™ Heat Resistant Snap Rivets

| WILL FIT THESE PANELS |                           |     |                       | PART NO. |                   |          | DESCRIPTION       | PART DIMENSIONS |      |                 |     |     |       | EXTRACTION FORCE |     |
|-----------------------|---------------------------|-----|-----------------------|----------|-------------------|----------|-------------------|-----------------|------|-----------------|-----|-----|-------|------------------|-----|
| MOUNTING HOLE DIA.    | ASSEMBLED PANEL THICKNESS |     | Tan Nylon 4/6 UL94V-2 | Tan      | Nylon 4/6 UL94V-2 | A Length |                   | B Head Height   |      | C Head Diameter |     | N   | Style |                  |     |
|                       | in.                       | mm. |                       |          |                   |          | Min.              | Max.            | in.  | mm.             | in. |     |       | mm.              | in. |
| <b>PR Tan Series</b>  |                           |     |                       |          |                   |          |                   |                 |      |                 |     |     |       |                  |     |
| .122                  | 3,1                       | .04 | 1,0                   | .08      | 2,0               | 9028H    | PR 122-039 HR Tan | .14             | 3,5  |                 |     |     |       | 78               | 2   |
|                       |                           | .08 | 2,0                   | .12      | 3,0               | 9030H    | PR 122-079 HR Tan | .18             | 4,5  |                 |     |     |       |                  |     |
|                       |                           | .12 | 3,0                   | .16      | 4,0               | 9032H    | PR 122-118 HR Tan | .22             | 5,6  | .06             | 1,6 | .25 | 6,4   |                  |     |
|                       |                           | .16 | 4,0                   | .19      | 5,0               | 9034H    | PR 122-157 HR Tan | .26             | 6,5  |                 |     |     |       |                  |     |
|                       |                           | .22 | 5,5                   | .26      | 6,5               | 9038H    | PR 122-217 HR Tan | .32             | 8,0  |                 |     |     |       |                  |     |
| .142                  | 3,6                       | .05 | 1,2                   | .08      | 2,1               | 9044H    | PR 142-047 HR Tan | .14             | 3,5  |                 |     |     |       | 118              | 1   |
|                       |                           | .08 | 2,1                   | .12      | 3,0               | 9046H    | PR 142-083 HR Tan | .18             | 4,5  |                 |     |     |       |                  |     |
|                       |                           | .11 | 2,7                   | .14      | 3,6               | 9048H    | PR 142-106 HR Tan | .20             | 5,0  | .06             | 1,6 | .25 | 6,4   |                  |     |
|                       |                           | .12 | 3,0                   | .16      | 4,0               | 9050H    | PR 142-118 HR Tan | .22             | 5,6  |                 |     |     |       |                  |     |
| .161                  | 4,1                       | .10 | 2,5                   | .14      | 3,5               | 9058H    | PR 161-098 HR Tan | .20             | 5,0  |                 |     |     |       | 196              | 1   |
|                       |                           | .14 | 3,5                   | .18      | 4,5               | 9060H    | PR 161-138 HR Tan | .24             | 6,0  |                 |     |     |       |                  |     |
|                       |                           | .18 | 4,5                   | .22      | 5,5               | 9062H    | PR 161-177 HR Tan | .28             | 7,0  | .07             | 1,8 | .32 | 8,0   |                  |     |
|                       |                           | .22 | 5,5                   | .26      | 6,5               | 9064H    | PR 161-217 HR Tan | .32             | 8,0  |                 |     |     |       |                  |     |
|                       |                           | .30 | 7,5                   | .34      | 8,5               | 9068H    | PR 161-295 HR Tan | .39             | 10,0 |                 |     |     |       |                  |     |

Standard color tan (beige).



- Molded from Nylon 4/6 94V-2 - **heat resistant to 266°F (130°C)**.
- Automotive **tan** (beige) color.
- Designed for fast and easy installation with no tools - just fingertip pressure required.
- Simply place rivet into the hole and press down on the head to fasten; legs expand to securely fasten components.
- Part Description Key: PR X-Y where X = Mounting Hole Diameter (inches) and Y = minimum Panel Thickness (inches).
- Standard Pack - 1,000/bag.

Material Nylon 4/6  
 Flammability Rating 94V-2  
 Temperature Range -4°F (-18°C) to 266°F (130°C)

Quick Specs

Компания «Life Electronics» занимается поставками электронных компонентов импортного и отечественного производства от производителей и со складов крупных дистрибьюторов Европы, Америки и Азии.

С конца 2013 года компания активно расширяет линейку поставок компонентов по направлению коаксиальный кабель, кварцевые генераторы и конденсаторы (керамические, пленочные, электролитические), за счёт заключения дистрибьюторских договоров

Мы предлагаем:

- Конкурентоспособные цены и скидки постоянным клиентам.
- Специальные условия для постоянных клиентов.
- Подбор аналогов.
- Поставку компонентов в любых объемах, удовлетворяющих вашим потребностям.
- Приемлемые сроки поставки, возможна ускоренная поставка.
- Доставку товара в любую точку России и стран СНГ.
- Комплексную поставку.
- Работу по проектам и поставку образцов.
- Формирование склада под заказчика.
- Сертификаты соответствия на поставляемую продукцию (по желанию клиента).
- Тестирование поставляемой продукции.
- Поставку компонентов, требующих военную и космическую приемку.
- Входной контроль качества.
- Наличие сертификата ISO.

В составе нашей компании организован Конструкторский отдел, призванный помогать разработчикам, и инженерам.

Конструкторский отдел помогает осуществить:

- Регистрацию проекта у производителя компонентов.
- Техническую поддержку проекта.
- Защиту от снятия компонента с производства.
- Оценку стоимости проекта по компонентам.
- Изготовление тестовой платы монтаж и пусконаладочные работы.



Тел: +7 (812) 336 43 04 (многоканальный)

Email: [org@lifeelectronics.ru](mailto:org@lifeelectronics.ru)