

Standard Metal Film Leaded Resistors



A homogeneous film of metal alloy is deposited on a high grade ceramic body. After a helical groove has been cut in the resistive layer, tinned connecting leads of electrolytic copper are welded to the end-caps.

The resistors are coated with a colored lacquer (light-blue for type SFR16S; light-green for type SFR25 and red-brown for type SFR25H) which provides electrical, mechanical and climatic protection. The encapsulation is resistant to all cleaning solvents in accordance with IEC 60068-2-45.

FEATURES

- Low cost
- Low noise (max. 1.5 $\mu\text{V/V}$ for $R > 1 \text{ M}\Omega$)
- Small size (SFR16S: 0204, SFR25/25H: 0207)
- Lead (Pb)-free solder contacts
- Pure tin plating provides compatibility with lead (Pb)-free and lead containing soldering processes
- Material categorization: For definitions of compliance please see www.vishay.com/doc?99912


**RoHS
COMPLIANT**

APPLICATIONS

- General purpose resistors

TECHNICAL SPECIFICATIONS				
DESCRIPTION	UNIT	SFR16S	SFR25	SFR25H
Resistance Range	Ω	$\pm 5 \%$; 1 to 3M $\pm 1 \%$; 4.99 to 3M Jumper (0 Ω)	$\pm 5 \%$; 0.22 to 10M $\pm 1 \%$; 1 to 10M Jumper (0 Ω)	
Resistance Tolerance	%	± 1 , E24/E96 series; ± 5 , E24 series		
Temperature Coefficient: $R \leq 4.7 \Omega$ $4.7 \Omega < R \leq 100 \text{ k}\Omega$ $100 \text{ k}\Omega < R \leq 1 \text{ M}\Omega$ $R > 1 \text{ M}\Omega$	ppm/K	$\leq \pm 250$ $\leq \pm 100$ $\leq \pm 250$ $\leq \pm 250$	$\leq \pm 100$ $\leq \pm 100$ $\leq \pm 100$ $\leq \pm 250$	$\leq \pm 100$ $\leq \pm 100$ $\leq \pm 100$ $\leq \pm 250$
Rated Dissipation, P_{70}	W	0.5	0.4	0.5
Thermal Resistance, R_{th}	K/W	170	200	150
Maximum Permissible Voltage, (U_{max} . AC/DC)	V	200	250	350
Noise: $R < 68 \text{ k}\Omega$ $68 \text{ k}\Omega \leq R \leq 100 \text{ k}\Omega$ $100 \text{ k}\Omega \leq R \leq 1 \text{ M}\Omega$ $R > 1 \text{ M}\Omega$	$\mu\text{V/V}$	max. 0.1 max. 0.5 max. 1.5 max. 1.5	max. 0.1 max. 0.1 max. 0.1 max. 1.5	max. 0.1 max. 0.1 max. 0.1 max. 1.5
Basic Specifications		IEC 60115-1		
Climatic Category (IEC 60068-1)		55/155/56		
Stability, ΔR max., after: Load (1000 h, P_{70}): R Range Long Term Damp Heat Test (56 Days): $R \leq 1 \text{ M}\Omega$ $R > 1 \text{ M}\Omega$		$\pm (2 \% R + 0.05 \Omega)$ $\pm (1 \% R + 0.05 \Omega)$ $\pm (1 \% R + 0.05 \Omega)$	$\pm (2 \% R + 0.05 \Omega)$ $\pm (1 \% R + 0.05 \Omega)$ $\pm (1 \% R + 0.05 \Omega)$	$\pm (2 \% R + 0.05 \Omega)$ $\pm (1 \% R + 0.05 \Omega)$ $\pm (2 \% R + 0.1 \Omega)$
Soldering (10 s, 260 °C)		$\pm (0.25 \% R + 0.05 \Omega)$	$\pm (0.25 \% R + 0.05 \Omega)$	$\pm (0.25 \% R + 0.05 \Omega)$
Short Time Overload		$\pm (0.25 \% R + 0.05 \Omega)$	$\pm (0.25 \% R + 0.05 \Omega)$	$\pm (1 \% R + 0.05 \Omega)$

Note

- R value is measured with probe distance of 24 mm \pm 1 mm using 4-terminal method

PART NUMBER AND PRODUCT DESCRIPTION						
PART NUMBER: SFR2500001001FA500						
S	F	R	2	5	0	0
0	0	0	0	1	0	0
1	0	0	1	F	A	5
0	0					0
MODEL/SIZE	VARIANT	TCR/MATERIAL	VALUE	TOLERANCE	PACKAGING ⁽¹⁾	SPECIAL
SFR16S0 SFR2500 SFR25H0	0 = Neutral Z = Value overflow (special)	0 = Standard Z = Jumper	3 digit value 1 digit multiplier MULTIPLIER 7 = *10 ⁻³ 2 = *10 ² 8 = *10 ⁻² 3 = *10 ³ 9 = *10 ⁻¹ 4 = *10 ⁴ 0 = *10 ⁰ 5 = *10 ⁵ 1 = *10 ¹ Z = 0000	F = ± 1 % J = ± 5 % Z = Jumper	N4 A5 A1 R5	The 2 digits are used for all special parts. 00 = Standard
PRODUCT DESCRIPTION: SFR25 1 % A5 1K0						
SFR25	1 %	A5	1K0			
MODEL/SIZE	TOLERANCE	PACKAGING ⁽¹⁾	RESISTANCE VALUE			
SFR16S SFR25 SFR25H	± 1 % ± 5 %	N4 A5 A1 R5	47K = 47 kΩ 51R1 = 51.1 Ω			

Notes

⁽¹⁾ Please refer to table PACKAGING

- The jumper has a maximum resistance $R_{max.} = 30 \text{ m}\Omega$ at 3 A (SFR16S)
- The jumper has a maximum resistance $R_{max.} = 30 \text{ m}\Omega$ at 5 A (SFR25)
- The PART NUMBER is shown to facilitate the introduction of a unified part numbering system for ordering products

PACKAGING						
MODEL	TOLERANCE	TAPING	AMMO PACK		REEL	
			PIECES	CODE	PIECES	CODE
SFR16S	1 %	Axial, 52 mm	5000	A5	5000	R5
SFR16S	5 %	Axial, 52 mm	5000	A5	5000	R5
			1000	A1		
SFR25, SFR25H	1 %	Axial, 52 mm	5000	A5	5000	R5
SFR25, SFR25H	5 %	Axial, 52 mm	5000	A5	5000	R5
			1000	A1		
SFR25, SFR25H	1 %	Radial	4000	N4	-	-
SFR25, SFR25H	5 %	Radial	4000	N4	-	-

DIMENSIONS


DIMENSIONS - Resistor types and relevant physical dimensions in millimeters				
TYPE	Ø D _{max.}	L _{1 max.}	L _{2 max.}	Ø d
SFR16S	1.9	3.5	4.1	0.45 ± 0.05
SFR25	2.5	6.5	7.5	0.58 ± 0.05
SFR25H	2.5	6.5	7.5	0.58 ± 0.05

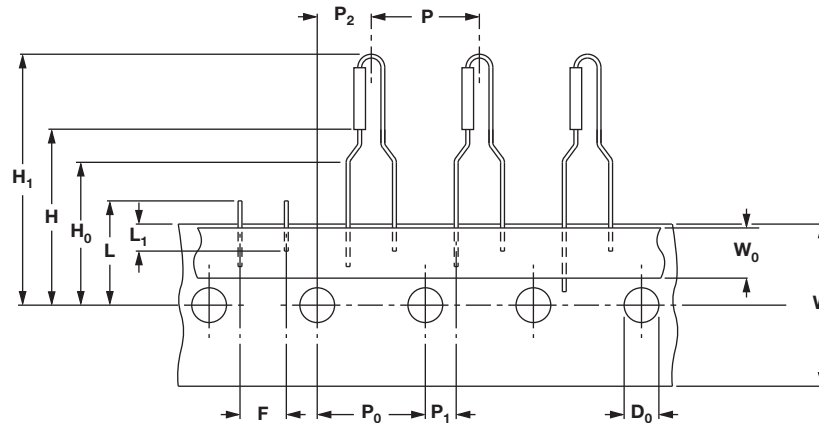
MASS PER UNIT	
TYPE	MASS (mg)
SFR16S	102
SFR25	205
SFR25H	205

OUTLINES

The length of the body (L_1) is measured by inserting the leads into holes of two identical gauge plates and moving these plates parallel to each other until the resistor body is clamped without deformation (IEC 60294).

MARKING

The nominal resistance and tolerance are marked on the resistor using four or five colored bands in accordance with IEC 60062, marking codes for resistors and capacitors.

PRODUCTS WITH RADIAL LEADS (SFR25, SFR25H)


DIMENSIONS - Radial taping				
SYMBOL	PARAMETER	VALUE	TOLERANCE	UNIT
P	Pitch of components	12.7	± 1.0	mm
P_0	Feed-hole pitch	12.7	± 0.2	mm
P_1	Feed-hole centre to lead at topside at the tape	3.85	± 0.5	mm
P_2	Feed-hole center to body center	6.35	± 1.0	mm
F	Lead-to-lead distance	4.8	+ 0.7/- 0	mm
W	Tape width	18.0	± 0.5	mm
W_0	Minimum hold down tape width	5.5	-	mm
H1	Component height	29	Max.	mm
H_0	Lead wire clinch height	16.5	± 0.5	mm
H_0	Height of component from tape center	19.5	± 1	mm
D_0	Feed-hole diameter	4.0	± 0.2	mm
L	Maximum length of snapped lead	11.0	-	mm
L_1	Minimum lead wire (tape portion) shortest lead	2.5	-	mm

Note

- Please refer to document "Packaging" for more detail (www.vishay.com/doc?28721).



**FUNCTIONAL PERFORMANCE
PRODUCT CHARACTERIZATION**

Standard values of nominal resistance are taken from the E96/E24 series for resistors with a tolerance of $\pm 1\%$ or $\pm 5\%$. The values of the E96/E24 series are in accordance with IEC 60063.

The power that the resistor can dissipate depends on the operating temperature



Maximum dissipation (P_{max}) in percentage of rated power as a function of the ambient temperature (T_{amb})



SFR16S Pulse on a regular basis; maximum permissible peak pulse power (\hat{P}_{max}) as a function of pulse duration (t_i)



SFR16S Pulse on a regular basis; maximum permissible peak pulse voltage (\hat{U}_{max}) as a function of pulse duration (t_i)



SFR25 Pulse on a regular basis; maximum permissible peak pulse power (\hat{P}_{max}) as a function of pulse duration (t_i)



SFR25 Pulse on a regular basis; maximum permissible peak pulse voltage (\hat{U}_{max}) as a function of pulse duration (t_i)



SFR25H Pulse on a regular basis; maximum permissible peak pulse power ($\hat{P}_{max.}$) as a function of pulse duration (t_i)



SFR25H Pulse on a regular basis; maximum permissible peak pulse voltage ($\hat{U}_{max.}$) as a function of pulse duration (t_i)



SFR16S Hot-spot temperature rise (ΔT) as a function of dissipated power



SFR25/SFR25H Hot-spot temperature rise (ΔT) as a function of dissipated power

Note

- The maximum permissible hot-spot temperature is 155 °C.

Application Information



TESTS AND REQUIREMENTS

Essentially all tests are carried out in accordance with IEC 60115-1 specification, category LCT/UCT/56 (rated temperature range: Lower Category Temperature, Upper Category temperature; damp heat, steady state, test duration: 56 days).

The tests are carried out in accordance with IEC 60068-2-xx test method under standard atmospheric conditions according to IEC 60068-1, 5.3.

In the Test Procedures and Requirements table, tests and requirements are listed with reference to the relevant clauses of IEC 60115-1 and IEC 60068-2-xx test methods. A short description of the test procedure is also given. In some instances deviations from the IEC recommendations were necessary for our method of specifying. All soldering tests are performed with mildly activated flux.

TEST PROCEDURES AND REQUIREMENTS							
IEC 60115-1 CLAUSE	IEC 60068-2 TEST METHOD	TEST	PROCEDURE	RESISTANCE RANGE	REQUIREMENTS		
					SFR16S	SFR25	SFR25H
4.16		Robustness of terminations:			Number of failures <math> < 10 \times 10^{-6}</math> Number of failures <math> < 10 \times 10^{-6}</math> No damage $\Delta R \text{ max.: } \pm (0.25 \% R + 0.05 \Omega)</math>$		
4.16.2	21 (Ua1)	Tensile all samples	\varnothing 0.45 mm, load 5 N; 10 s \varnothing 0.58 mm, load 10 N; 10 s				
4.16.3	21 (Ub)	Bending half number of samples	\varnothing 0.45 mm, load 2.5 N; 4 x 90° \varnothing 0.58 mm, load 5 N; 4 x 90°				
4.16.4	21 (Uc)	Torsion other half of samples	3 x 360° in opposite directions				
4.17	20 (Ta)	Solderability	2 s; 235 °C: Solder bath method; SnPb40 3 s; 245 °C: Solder bath method; SnAg3Cu0.5		Good tinning ($\geq 95 \%$ covered); no damage		
		Solderability (after aging)	8 h steam or 16 h 155 °C; leads immersed 6 mm; for 2 s at 235 °C: Solder bath (SnPb40) for 3 s at 245 °C: Solder bath (SnAgCu0.5) method		Good tinning ($\geq 95 \%$ covered); no damage		
4.18	20 (Tb)	Resistance to soldering heat	Thermal shock: 10 s; 260 °C; 3 mm from body		$\Delta R \text{ max.: } \pm (0.25 \% R + 0.05 \Omega)</math>$		
4.19	14 (Na)	Rapid change of temperature	30 min at - 55 °C and 30 min at + 155 °C; 5 cycles		$\Delta R \text{ max.: } \pm (0.25 \% R + 0.05 \Omega)</math>$		
4.20	29 (Eb)	Bump	3 x 1500 bumps in 3 directions; 40 g		No damage $\Delta R \text{ max.: } \pm (0.25 \% R + 0.05 \Omega)</math>$		
4.22	6 (Fc)	Vibration	Frequency 10 Hz to 500 Hz; displacement 1.5 mm or acceleration 10 g; 3 directions; total 6 h (3 x 2 h)		No damage $\Delta R \text{ max.: } \pm (0.25 \% R + 0.05 \Omega)</math>$		
4.23	2 (Ba)	Climatic sequence: Dry heat	16 h; 155 °C		$R_{\text{ins min.:}} 1000 \text{ M}\Omega</math>\Delta R \text{ max.: } \pm (1 \% R + 0.05 \Omega)</math>$		
4.23.2		Damp heat (accelerated) 1 st cycle	24 h; 55 °C; 90 % to 100 % RH				
4.23.3	30 (Db)						
4.23.4	1 (Aa)	Cold	2 h; - 55 °C				
4.23.5	13 (M)	Low air pressure	2 h; 8.5 kPa; 15 °C to 35 °C				
4.23.6	30 (Db)	Damp heat (accelerated) remaining cycles	5 days; 55 °C; 95 % to 100 % RH				
				$R \leq 1 \text{ M}\Omega</math>$			
				$R > 1 \text{ M}\Omega</math>$	$\Delta R \text{ max.: } \pm (1 \% R + 0.05 \Omega)</math>$		
					$\Delta R \text{ max.: } \pm (2 \% R + 0.1 \Omega)</math>$		



TEST PROCEDURES AND REQUIREMENTS							
IEC 60115-1 CLAUSE	IEC 60068-2 TEST METHOD	TEST	PROCEDURE	RESISTANCE RANGE	REQUIREMENTS		
					SFR16S	SFR25	SFR25H
4.24	78 (Cab)	Damp heat (steady state)	56 days; 40 °C; 90 % to 95 % RH; loaded with 0.01 P_{70} (steps: 0 V to 100 V)		R_{ins} min.: 1000 M Ω ΔR max.: $\pm (2 \% R + 0.05 \Omega)$		
4.25.1		Endurance (at 70 °C)	1000 h; loaded with P_{70} or U_{max} ; 1.5 h ON and 0.5 h OFF		ΔR max.: $\pm (2 \% R + 0.05 \Omega)$		
4.8		Temperature coefficient	Between - 55 °C and + 155 °C	$R < 4.7 \Omega$ $R \leq 100 \text{ k}\Omega$ $R \leq 1 \text{ M}\Omega$ $R > 1 \text{ M}\Omega$	$\leq \pm 250 \text{ ppm/K}$ $\leq \pm 100 \text{ ppm/K}$ $\leq \pm 250 \text{ ppm/K}$ $\leq \pm 250 \text{ ppm/K}$	$\leq \pm 100 \text{ ppm/K}$ $\leq \pm 100 \text{ ppm/K}$ $\leq \pm 100 \text{ ppm/K}$ $\leq \pm 250 \text{ ppm/K}$	$\leq \pm 100 \text{ ppm/K}$ $\leq \pm 100 \text{ ppm/K}$ $\leq \pm 100 \text{ ppm/K}$ $\leq \pm 250 \text{ ppm/K}$
4.7		Voltage proof on insulation	$U_{RMS} = 400 \text{ V}$ (SFR16S) or $U_{RMS} = 600 \text{ V}$ (SFR25 and SFR25H); during 1 min; V-block method		No breakdown		
4.12		Noise	IEC 60195	$R < 68 \text{ k}\Omega$ $R \leq 100 \text{ k}\Omega$ $R \leq 1 \text{ M}\Omega$ $R > 1 \text{ M}\Omega$	max. 0.1 $\mu\text{V/V}$ max. 0.5 $\mu\text{V/V}$ max. 1.5 $\mu\text{V/V}$ max. 1.5 $\mu\text{V/V}$	max. 0.1 $\mu\text{V/V}$ max. 0.1 $\mu\text{V/V}$ max. 0.1 $\mu\text{V/V}$ max. 1.5 $\mu\text{V/V}$	max. 0.1 $\mu\text{V/V}$ max. 0.1 $\mu\text{V/V}$ max. 0.1 $\mu\text{V/V}$ max. 1.5 $\mu\text{V/V}$
4.6.1.1		Insulation resistance	U_{max} , DC = 500 V during 1 min; V-block method		R_{ins} min.: 1000 M Ω		
4.13		Short time overload	Room temperature; $P = 6.25 \times P_n$ (SFR25, SFR25H) or $6.25 \times 0.25 \text{ W}$ (SFR16S); (voltage not more than 2 x limiting voltage); 10 cycles; 5 s ON and 45 s OFF		ΔR max.: $\pm (0.25 \% R + 0.05 \Omega)$		ΔR max.: $\pm 1 \% R + 0.05 \Omega$

HISTORICAL 12NC INFORMATION

- The resistors had a 12-digit numeric code starting with 23.
- The subsequent 6 digits for 1 % or 7 digits for 5 % indicated the resistor type and packaging.
- The remaining digits indicated the resistance value:
 - The first 3 digits for 1 % or 2 digits for 5 % indicated the resistance value.
 - The last digit indicated the resistance decade.

Resistance Decade for $\pm 5 \%$ Tolerance

RESISTANCE DECADE	LAST DIGIT
0.10 Ω to 0.91 Ω	7
1 Ω to 9.1 Ω	8
10 Ω to 91 Ω	9
100 Ω to 910 Ω	1
1 k Ω to 9.1 k Ω	2
10 k Ω to 91 k Ω	3
100 k Ω to 910 k Ω	4
1 M Ω to 9.1 M Ω	5
= 10 M Ω	6

Resistance Decade for $\pm 1 \%$ Tolerance

RESISTANCE DECADE	LAST DIGIT
1 Ω to 9.76 Ω	8
10 Ω to 97.6 Ω	9
100 Ω to 976 Ω	1
1 k Ω to 9.76 k Ω	2
10 k Ω to 97.6 k Ω	3
100 k Ω to 976 k Ω	4
1 M Ω to 9.76 M Ω	5
= 10 M Ω	6

12NC Example

The 12NC of a SFR25 resistor, value 5600 $\Omega \pm 5 \%$, taped on a bandolier of 5000 units in ammpack was: 2322 181 43562.



HISTORICAL 12NC - Resistor type and packaging					
TYPE	TOL.	23..			
		BANDOLIER IN AMMOPACK			BANDOLIER ON REEL
		RADIAL TAPED	STRAIGHT LEADS		STRAIGHT LEADS
		4000 UNITS	1000 UNITS	5000 UNITS	5000 UNITS
SFR16S	± 5 %	-	..22 187 73...	..22 187 53...	..06 187 23...
	± 1 %	-	-	..06 187 3...	..06 187 1....
	Jumper	-	-	..06 187 90013	..22 187 90346
SFR25	± 5 %	..06 184 03...	..22 181 53...	..22 181 43...	..22 181 63...
	± 1 %	-	-	..22 188 2...	..06 181 8....
	Jumper	-	..22 181 90018	..22 181 90019	..06 181 90011
SFR25H	± 5 %	..06 186 03...	..22 186 16...	..22 186 76...	..06 186 63...
	± 1 %	-	-	..22 186 3....	..06 186 8....



Disclaimer

ALL PRODUCT, PRODUCT SPECIFICATIONS AND DATA ARE SUBJECT TO CHANGE WITHOUT NOTICE TO IMPROVE RELIABILITY, FUNCTION OR DESIGN OR OTHERWISE.

Vishay Intertechnology, Inc., its affiliates, agents, and employees, and all persons acting on its or their behalf (collectively, "Vishay"), disclaim any and all liability for any errors, inaccuracies or incompleteness contained in any datasheet or in any other disclosure relating to any product.

Vishay makes no warranty, representation or guarantee regarding the suitability of the products for any particular purpose or the continuing production of any product. To the maximum extent permitted by applicable law, Vishay disclaims (i) any and all liability arising out of the application or use of any product, (ii) any and all liability, including without limitation special, consequential or incidental damages, and (iii) any and all implied warranties, including warranties of fitness for particular purpose, non-infringement and merchantability.

Statements regarding the suitability of products for certain types of applications are based on Vishay's knowledge of typical requirements that are often placed on Vishay products in generic applications. Such statements are not binding statements about the suitability of products for a particular application. It is the customer's responsibility to validate that a particular product with the properties described in the product specification is suitable for use in a particular application. Parameters provided in datasheets and/or specifications may vary in different applications and performance may vary over time. All operating parameters, including typical parameters, must be validated for each customer application by the customer's technical experts. Product specifications do not expand or otherwise modify Vishay's terms and conditions of purchase, including but not limited to the warranty expressed therein.

Except as expressly indicated in writing, Vishay products are not designed for use in medical, life-saving, or life-sustaining applications or for any other application in which the failure of the Vishay product could result in personal injury or death. Customers using or selling Vishay products not expressly indicated for use in such applications do so at their own risk. Please contact authorized Vishay personnel to obtain written terms and conditions regarding products designed for such applications.

No license, express or implied, by estoppel or otherwise, to any intellectual property rights is granted by this document or by any conduct of Vishay. Product names and markings noted herein may be trademarks of their respective owners.

Material Category Policy

Vishay Intertechnology, Inc. hereby certifies that all its products that are identified as RoHS-Compliant fulfill the definitions and restrictions defined under Directive 2011/65/EU of The European Parliament and of the Council of June 8, 2011 on the restriction of the use of certain hazardous substances in electrical and electronic equipment (EEE) - recast, unless otherwise specified as non-compliant.

Please note that some Vishay documentation may still make reference to RoHS Directive 2002/95/EC. We confirm that all the products identified as being compliant to Directive 2002/95/EC conform to Directive 2011/65/EU.

Vishay Intertechnology, Inc. hereby certifies that all its products that are identified as Halogen-Free follow Halogen-Free requirements as per JEDEC JS709A standards. Please note that some Vishay documentation may still make reference to the IEC 61249-2-21 definition. We confirm that all the products identified as being compliant to IEC 61249-2-21 conform to JEDEC JS709A standards.

Компания «Life Electronics» занимается поставками электронных компонентов импортного и отечественного производства от производителей и со складов крупных дистрибьюторов Европы, Америки и Азии.

С конца 2013 года компания активно расширяет линейку поставок компонентов по направлению коаксиальный кабель, кварцевые генераторы и конденсаторы (керамические, пленочные, электролитические), за счёт заключения дистрибьюторских договоров

Мы предлагаем:

- Конкурентоспособные цены и скидки постоянным клиентам.
- Специальные условия для постоянных клиентов.
- Подбор аналогов.
- Поставку компонентов в любых объемах, удовлетворяющих вашим потребностям.
- Приемлемые сроки поставки, возможна ускоренная поставка.
- Доставку товара в любую точку России и стран СНГ.
- Комплексную поставку.
- Работу по проектам и поставку образцов.
- Формирование склада под заказчика.
- Сертификаты соответствия на поставляемую продукцию (по желанию клиента).
- Тестирование поставляемой продукции.
- Поставку компонентов, требующих военную и космическую приемку.
- Входной контроль качества.
- Наличие сертификата ISO.

В составе нашей компании организован Конструкторский отдел, призванный помогать разработчикам, и инженерам.

Конструкторский отдел помогает осуществить:

- Регистрацию проекта у производителя компонентов.
- Техническую поддержку проекта.
- Защиту от снятия компонента с производства.
- Оценку стоимости проекта по компонентам.
- Изготовление тестовой платы монтаж и пусконаладочные работы.



Тел: +7 (812) 336 43 04 (многоканальный)

Email: org@lifeelectronics.ru