

PLEASE CHECK WWW.MOLEX.COM FOR LATEST PART INFORMATION

Part Number: [0877159920](#)

Status: **Active**

Overview:

Description: 1.00mm (.039") Pitch, Edge Card Connector, 200 Circuits, Nylon 4/6 Glass-filled, Black Housing, Phosphor Bronze, 0.76µm (30µ") Gold (Au) Plating, with Plastic Pegs, 2.54mm (.100") Solder tail, Lead Free

Agency Certification

CSA LR19980

General

Product Family Edge Card Connectors
Series 87715
Component Type Edgecard to PCB
Overview edge_card_connectors
Product Name Edge Card

Physical

Circuits (Loaded) 200
Circuits (maximum) 200
Circuits Detail All Signal
Durability (mating cycles max) 50
Entry Angle Vertical (Top Entry)
Flammability 94V-0
Keying to Mating Part Yes
Material - Plating Mating Gold
Material - Plating Termination Tin
PC Tail Length (in) 0.100 In
PC Tail Length (mm) 2.54 mm
PCB Locator Yes
PCB Retention Yes
PCB Thickness Recommended (in) 0.062 In
PCB Thickness Recommended (mm) 1.60 mm
Packaging Type Tray
Pitch - Mating Interface (in) 0.039 In
Pitch - Mating Interface (mm) 1.00 mm
Pitch - Term. Interface (in) 0.039 In
Pitch - Term. Interface (mm) 1.00 mm
Plating min: Mating (µin) 30
Plating min: Mating (µm) 0.76
Polarized to Mating Part Yes
Temperature Range - Operating -55°C to +85°C
Termination Interface: Style Through Hole

Electrical

Current - Maximum per Contact 1.1A
Voltage - Maximum 50V AC (RMS)/DC

Solder Process Data

Lead-free Process Capability Wave Capable (TH only)
Process Temperature max. C 260

Material Info

Reference - Drawing Numbers

Packaging Specification PK-87715-212
Product Specification PS-87715-200

EU RoHS

**ELV and RoHS
Compliant**

REACH SVHC

Not Reviewed

Halogen-Free

Status

Not Halogen-Free

China RoHS



**Need more information on product
environmental compliance?**

Email productcompliance@molex.com
For a multiple part number RoHS Certificate of
Compliance, [click here](#)

Please visit the [Contact Us](#) section for any
non-product compliance questions.

Search Parts in this Series

87715Series

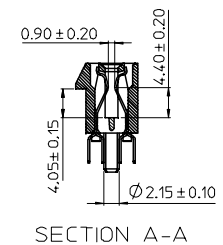
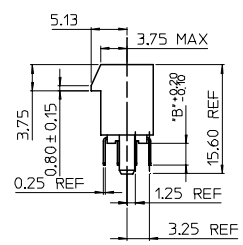
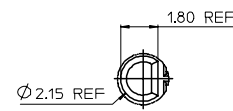
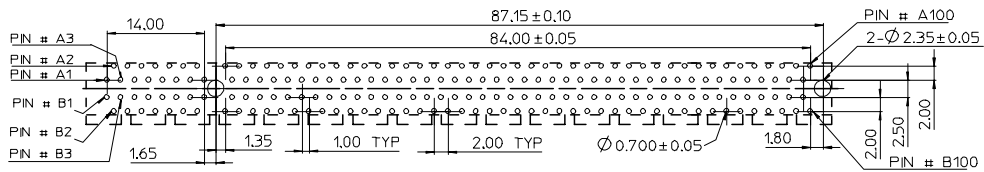
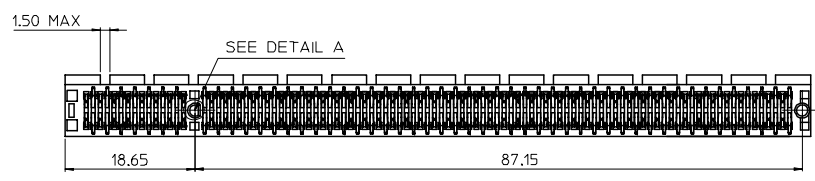
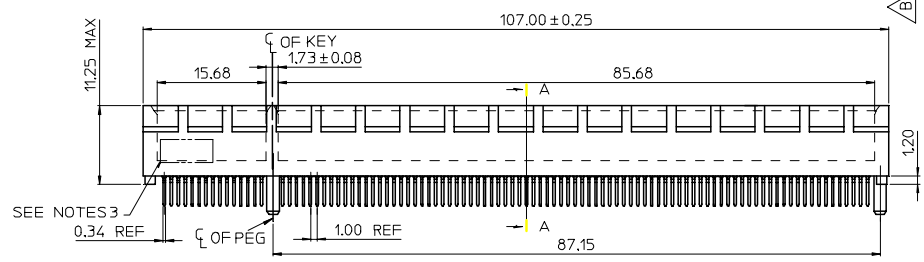
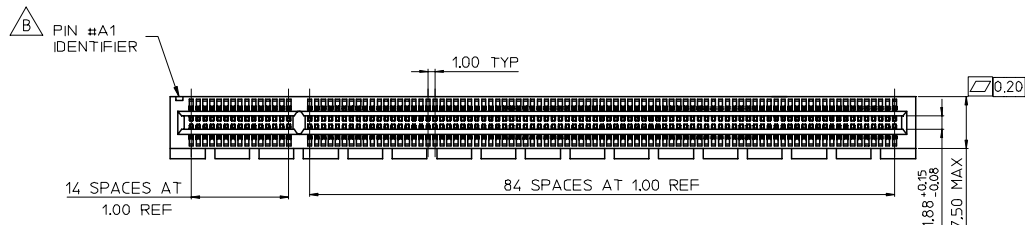
Mates With

1.0mm Thick Memory Module

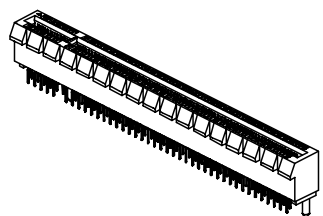
This document was generated on 06/04/2010

PLEASE CHECK WWW.MOLEX.COM FOR LATEST PART INFORMATION

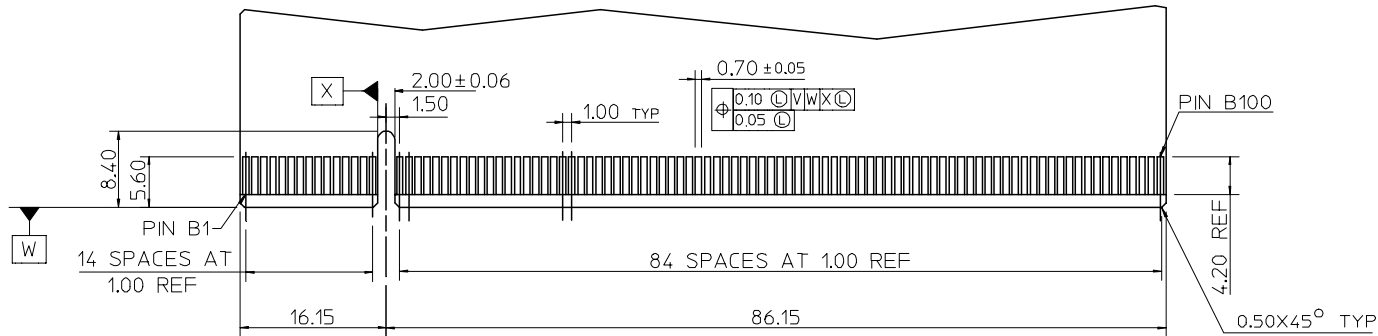
MOLEX P/N	CIRCUIT SIZE	HOUSING MATERIAL	HOUSING COLOR	TERMINAL MATERIAL	CONTACT PLATING	SOLDERTAIL PLATING	DIM 'B'
87715-9920	200	NYLON46	BLACK	PHOSPHOR BRONZE	GOLD 30 MICROINCH	100 MICRONCH TN OVER NICKEL OVERALL	2.54
87715-9921							3.00



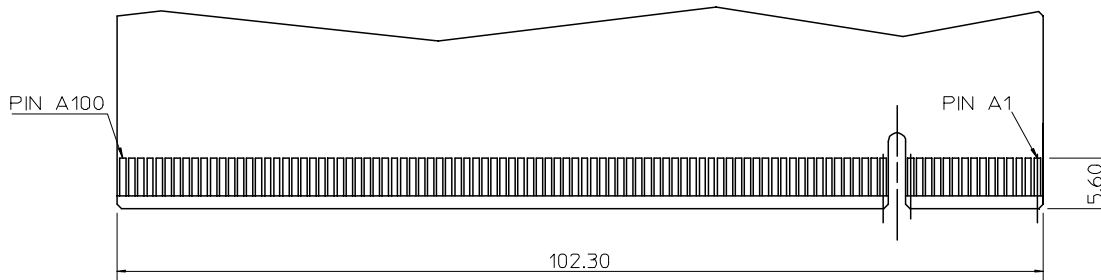
- NOTES:**
- MATERIALS:
 - 1-1.HOUSING:SEE TABLE, GLASS FIBER FILLED, UL94V-0, COLOR:SEE TABLE
 - 1-2.CONTACT:SEE TABLE
 - PLATING:
 - 2-1.CONTACT AREA:SEE TABLE
 - 2-2.SOLDER TAIL:SEE TABLE
 - 2-3.UNDER PLATING:SEE TABLE
 - DATE CODE:TO BE PRINTED
 - PRODUCT SPECIFICATION REFER TO PS-87715-200
 - PACKAGING SPECIFICATION REFER TO PK-87715-212
 - TEST SUMMARY:REFER TO TS-87715-212
 - LEAD-FREE AND ROHS COMPLIANT PRODUCT



DRAWING ERROR EC NO: SH2007-0602 DRWN:ALL IN 2007/02/14 CHKD: 2007/02/14 APPR:WWSCHANG 2007/02/14	QUALITY SYMBOLS ▽=0 ◻=0	GENERAL TOLERANCES (UNLESS SPECIFIED)		DIMENSION STYLE MM ONLY		SCALE	DESIGN UNITS METRIC	THIRD ANGLE PROJECTION
			mm	INCH	DRAWN BY TOM	DATE 2005/03/13	TITLE 1.00 PITCH EDGE CARD 200 PIN VERT DIP CONN	
		4 PLACES ± ---	± ---	± ---	CHECKED BY ALLEN LIN	DATE 2005/03/13		
		3 PLACES ± ---	± ---	± ---	APPROVED BY WILSON CHANG	DATE 2005/03/13		
		2 PLACES ± 0.25	± ---	± ---	MATERIAL NO. SEE TABLE		DOCUMENT NO. SD-87715-212	SHEET NO. 1 OF 2
		1 PLACE ± 0.25	± ---	± ---	SIZE THIS DRAWING CONTAINS INFORMATION THAT IS PROPRIETARY TO MOLEX INCORPORATED AND SHOULD NOT BE USED WITHOUT WRITTEN PERMISSION			
		ANGULAR ± 3 °		DRAFT WHERE APPLICABLE MUST REMAIN WITHIN DIMENSIONS				



← I/O PANEL DIRECTION
 △ PRIMARY (COMPONENT) SIDE



I/O PANEL → DIRECTION
 SECONDARY (SOLDER) SIDE

NOTES :

△ CHAMFER EDGES MUST BE FREE OF CUTTING BURRS.

SEE SHEET 1 EC NO: SH2007-0602 DRWN: ALL IN CHKD: APPR: WWSCHANG	DESCRIPTION 2007/02/14 2007/02/14 2007/02/14	QUALITY SYMBOLS	GENERAL TOLERANCES (UNLESS SPECIFIED)		DIMENSION STYLE MM ONLY		SCALE 1:1	DESIGN UNITS METRIC	THIRD ANGLE PROJECTION	
		$\nabla = 0$ $\square = 0$	mm	INCH	DRAWN BY TOM	DATE 2005/03/13	TITLE △ 1.00 PITCH EDGE CARD 200 PIN VERT DIP CONN			
		4 PLACES ± --- ± ---	3 PLACES ± --- ± ---	2 PLACES ± 0.25 ± ---	1 PLACE ± 0.25 ± ---	CHECKED BY ALLEN LIN				
		ANGULAR ± 3 °		DRAFT WHERE APPLICABLE MUST REMAIN WITHIN DIMENSIONS		APPROVED BY WILSON CHANG	DATE 2005/03/13	MOLEX INCORPORATED		
						MATERIAL NO. SEE TABLE	DOCUMENT NO. SD-87715-212	SHEET NO. 2 OF 2		

Компания «Life Electronics» занимается поставками электронных компонентов импортного и отечественного производства от производителей и со складов крупных дистрибьюторов Европы, Америки и Азии.

С конца 2013 года компания активно расширяет линейку поставок компонентов по направлению коаксиальный кабель, кварцевые генераторы и конденсаторы (керамические, пленочные, электролитические), за счёт заключения дистрибьюторских договоров

Мы предлагаем:

- Конкурентоспособные цены и скидки постоянным клиентам.
- Специальные условия для постоянных клиентов.
- Подбор аналогов.
- Поставку компонентов в любых объемах, удовлетворяющих вашим потребностям.
- Приемлемые сроки поставки, возможна ускоренная поставка.
- Доставку товара в любую точку России и стран СНГ.
- Комплексную поставку.
- Работу по проектам и поставку образцов.
- Формирование склада под заказчика.
- Сертификаты соответствия на поставляемую продукцию (по желанию клиента).
- Тестирование поставляемой продукции.
- Поставку компонентов, требующих военную и космическую приемку.
- Входной контроль качества.
- Наличие сертификата ISO.

В составе нашей компании организован Конструкторский отдел, призванный помогать разработчикам, и инженерам.

Конструкторский отдел помогает осуществить:

- Регистрацию проекта у производителя компонентов.
- Техническую поддержку проекта.
- Защиту от снятия компонента с производства.
- Оценку стоимости проекта по компонентам.
- Изготовление тестовой платы монтаж и пусконаладочные работы.



Тел: +7 (812) 336 43 04 (многоканальный)

Email: org@lifeelectronics.ru