

Features

- GaN on SiC D-Mode Transistor Technology
- Common-Source Configuration
- Unmatched, Coupled DC and RF
- Ideal for Pulsed and CW Applications up to 50 V
- 50 V Typical Bias, Class AB
- Excellent Thermal Resistance
- Thermally-Enhanced Plastic SOT-89 Package
- MTTF = 600 years ($T_J < 200^\circ\text{C}$)
- Halogen-Free “Green” Mold Compound
- RoHS* Compliant and 260°C Reflow Compatible
- MSL1

Description

The MAGX-000040-00500P is a GaN on SiC unmatched power device offering the widest RF frequency capability, most reliable high voltage operation, lowest overall transistor size, cost and weight in a “TRUE SMT”™ plastic package.

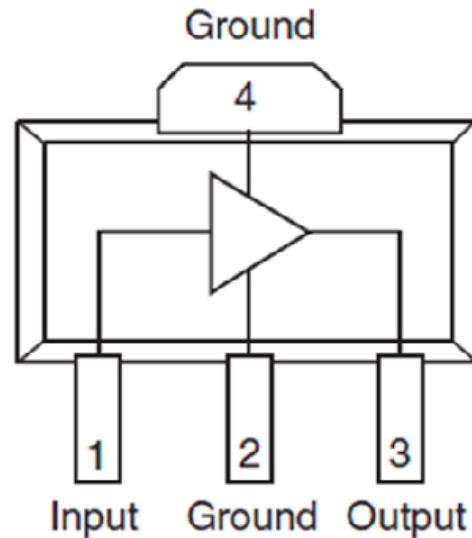
Use of an internal stress buffer technology allows reliable operation at junction temperatures up to 200°C . The small package size and excellent RF performance make it an ideal replacement for costly flanged or metal-backed module components.

Ordering Information¹

Part Number	Package
MAGX-000040-00500P	Bulk Packaging
MAGX-000040-SB2PPR	Sample Board

1. Reference Application Note M513 for reel size information.

Functional Schematic



Pin Configuration

Pin No.	Function
1	V_{GG}/RF_{IN}
2	GND
3	V_{DD}/RF_{OUT}
4	GND

* Restrictions on Hazardous Substances, European Union Directive 2002/95/EC.

GaN Wideband 5 W Pulsed Transistor in Plastic Package DC - 4.0 GHz

Rev. V1

Typical Narrowband RF Performance²: $V_{DD} = 50\text{ V}$, $I_{DQ} = 17\text{ mA}$, $T_A = 25^\circ\text{C}$

Parameter	1 GHz	1.6 GHz	3.0 GHz	3.5 GHz	Units
Linear Gain	18	17	14	13.5	dB
Pulsed Peak Output Power (P3dB)	5.3	5.3	5.3	5.3	W
Pulsed Power Gain (P3dB)	15	14	11	10.5	dB
Drain Efficiency (P3dB)	61	55	53	50	%

2. Device optimally matched in narrowband load-pull test system.

Electrical Specifications³: Freq. = 1.6 GHz, $V_{DD} = 50\text{ V}$, $I_{DQ} = 17\text{ mA}$, $T_A = 25^\circ\text{C}$, $Z_0 = 50\ \Omega$

Parameter	Test Conditions	Symbol	Min.	Typ.	Max.	Units
RF FUNCTIONAL TESTS: Pulse Width = 1 ms, 10% Duty Cycle						
Pulsed Peak Output Power	$P_{IN} = 0.28\text{ W Peak}$	P_{OUT}	4.5	5.3	-	Wpk
Pulsed Power Gain	$P_{IN} = 0.28\text{ W Peak}$	G_P	12	13	-	dB
Pulsed Drain Efficiency	$P_{IN} = 0.28\text{ W Peak}$	η_D	47	51.3	-	%
Load Mismatch Stability	$P_{IN} = 0.28\text{ W Peak}$	VSWR-S	-	5:1	-	-
Load Mismatch Tolerance	$P_{IN} = 0.28\text{ W Peak}$	VSWR-T	-	10:1	-	-
RF FUNCTIONAL TESTS: CW						
CW Output Power	P3dB	P_{OUT}	-	4	-	W

3. Device measured in MACOM 1.4-1.6 GHz evaluation board. See tuning information on page 4.

Electrical Characteristics: $T_A = 25^\circ\text{C}$

Parameter	Test Conditions	Symbol	Min.	Typ.	Max.	Units
DC CHARACTERISTICS						
Drain-Source Leakage Current	$V_{GS} = -8\text{ V}$, $V_{DS} = 175\text{ V}$	I_{DS}	-	-	200	μA
Gate Threshold Voltage	$V_{DS} = 5\text{ V}$, $I_D = 0.6\text{ mA}$	$V_{GS(TH)}$	-5	-3	-2	V
Forward Transconductance	$V_{DS} = 5\text{ V}$, $I_D = 1500\text{ mA}$	G_M	0.1	-	-	S
DYNAMIC CHARACTERISTICS						
Input Capacitance	$V_{DS} = 0\text{ V}$, $V_{GS} = -8\text{ V}$, $F = 1\text{ MHz}$	C_{ISS}	-	0.5	-	pF
Output Capacitance	$V_{DS} = 50\text{ V}$, $V_{GS} = -8\text{ V}$, $F = 1\text{ MHz}$	C_{OSS}	-	0.18	-	pF
Reverse Transfer Capacitance	$V_{DS} = 50\text{ V}$, $V_{GS} = -8\text{ V}$, $F = 1\text{ MHz}$	C_{RSS}	-	0.05	-	pF

2

MACOM Technology Solutions Inc. (MACOM) and its affiliates reserve the right to make changes to the product(s) or information contained herein without notice. Visit www.macomtech.com for additional data sheets and product information.

Absolute Maximum Ratings ^{4,5,6,7,8}

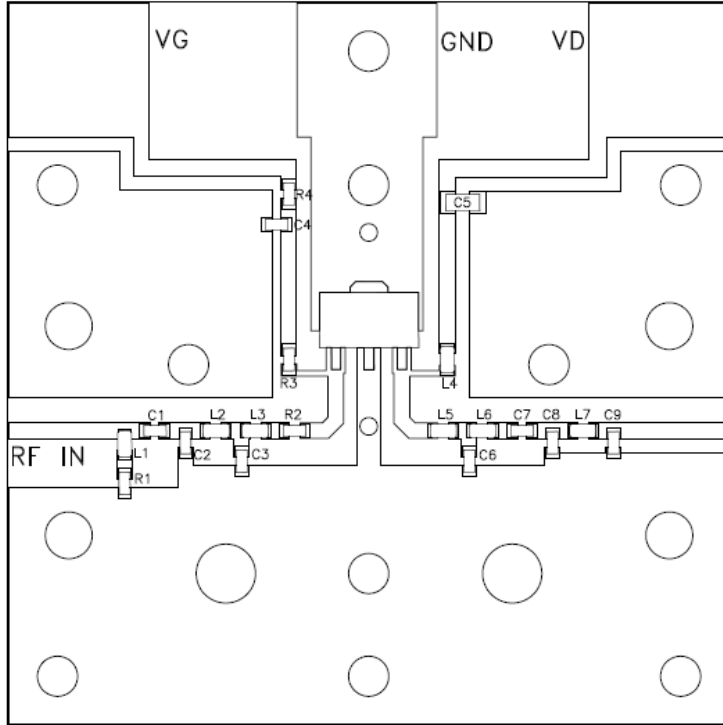
Parameter	Absolute Max.
Input Power	30 dBm
Drain Supply Voltage, V_{DD}	+65 V
Gate Supply Voltage, V_{GG}	-8 V to 0 V
Supply Current, I_{DD}	300 mA
Power Dissipation, CW (85°C)	12 W
Power Dissipation, Pulsed Mode (85°C)	31 W
Junction Temperature ⁷	200°C
Operating Temperature	-40°C to +95°C
Storage Temperature	-65°C to +150°C

4. Exceeding any one or combination of these limits may cause permanent damage to this device.
5. MACOM does not recommend sustained operation near these survivability limits.
6. For saturated performance it is recommended that the sum of $(3 * V_{DD} + \text{abs}(V_{GG})) \leq 175 \text{ V}$.
7. Operating at nominal conditions with $T_J \leq 200^\circ\text{C}$ will ensure $\text{MTTF} > 1 \times 10^6$ hours. Junction temperature directly affects device MTTF and should be kept as low as possible to maximize lifetime.
8. Junction Temperature (T_J) = $T_C + \Theta_{JC} * ((V * I) - (P_{OUT} - P_{IN}))$.

Typical CW thermal resistance (Θ_{JC}) = 10.5°C/W.

Typical transient thermal resistance (Θ_{JC}) = $\Theta_{JC} = 4.0^\circ\text{C/W}$ (1 ms pulse, 10% duty cycle).

L-Band Evaluation Board Details and Recommended Tuning Solutions



Parts measured on evaluation board (12-mil thick RO4003C). Electrical and thermal ground is provided using a copper-filled, via-hole array (not pictured), and evaluation board is mounted to a metal plate.

Matching is provided using lumped elements. Recommended tuning solutions for 2 frequency ranges are detailed in the parts list below.

Bias Sequencing

Turning the device ON

1. Set V_G to the pinch-off value (V_P), typically -5 V.
2. Turn on V_D to nominal voltage (50 V).
3. Increase V_{GS} to desired quiescent current.
4. Apply RF power to desired level.

Turning the device OFF

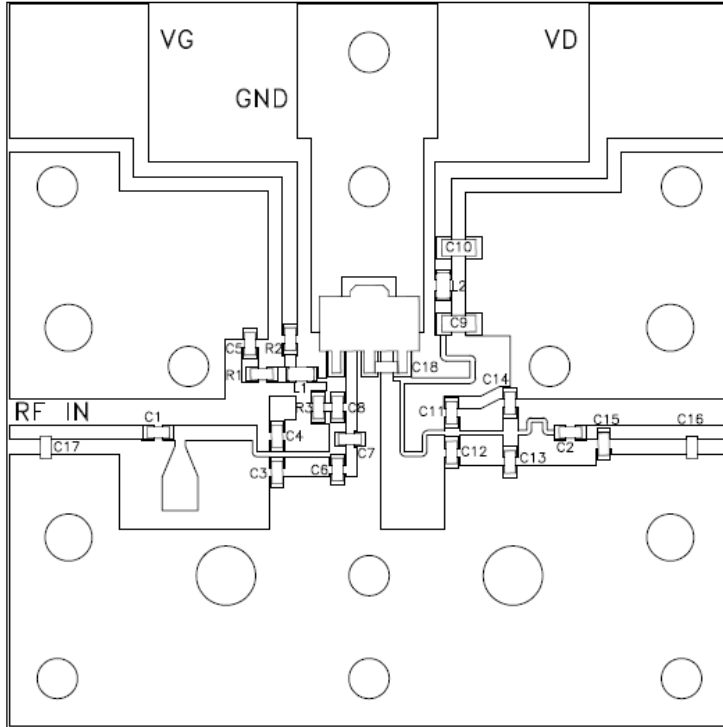
1. Turn the RF power off.
2. Decrease V_G down to V_P .
3. Turn off V_D .
4. Turn off V_G .

Parts List

Part	Frequency = 1.0 - 1.2 GHz	Frequency = 1.4 - 1.6 GHz
C1	10 pF, 600L, ATC	10 pF, 600L, ATC
C2	3.9 pF 0.5 pF, 600L, ATC ⁹	2.4 pF, 600L, ATC
C3	6.8 pF 1 pF, 600L, ATC ⁹	5.6 pF, 600L, ATC
C4	10 nF, 0402, Murata	10 nF, 0402, Murata
C5	10 nF, 0603, Murata	10 nF, 0603, Murata
C6	3.3 pF, 600L, ATC	2.4 pF, 600L, ATC
C7	10 pF, 600L, ATC	10 pF, 600L, ATC
C8	1.3 pF, 600L, ATC	1.3 pF, 600L, ATC
C9	2 pF, 600L, ATC	1.6 pF, 600L, ATC
L1	27 nH, 0402HP, Coilcraft	27 nH, 0402HP, Coilcraft
L2	4.3 nH, 0402HP, Coilcraft	3.3 nH, 0402HP, Coilcraft
L3	3.3 nH, 0402HP, Coilcraft	1 nH, 0402HP, Coilcraft
L4	30 nH, 0402HP, Coilcraft	12 nH, 0402HP, Coilcraft
L5	16 nH, 0402HP, Coilcraft	8.2 nH, 0402HP, Coilcraft
L6	8.2 nH, 0402HP, Coilcraft	3.9 nH, 0402HP, Coilcraft
L7	2.7 nH, 0402HP, Coilcraft	3.3 nH, 0402HP, Coilcraft
R1	49.9 Ω , 0402, Panasonic	49.9 Ω , 0402, Panasonic
R2	5.1 Ω , 0402, Panasonic	5.1 Ω , 0402, Panasonic
R3	200 Ω , 0402, Panasonic	200 Ω , 0402, Panasonic
R4	1 k Ω , 0402, Panasonic	1 k Ω , 0402, Panasonic

9. Parallel combination of two capacitors.

S-Band Evaluation Board Details and Recommended Tuning Solutions



Parts measured on evaluation board (12-mil thick RO4003C). Electrical and thermal ground is provided using a copper-filled, via-hole array (not pictured), and evaluation board is mounted to a metal plate.

Matching is provided using lumped elements. Recommended tuning solution for the 2.9-3.3 GHz frequency band is detailed in the parts list below.

Bias Sequencing

Turning the device ON

1. Set V_G to the pinch-off value (V_P), typically -5 V.
2. Turn on V_D to nominal voltage (50 V).
3. Increase V_{GS} to desired quiescent current.
4. Apply RF power to desired level.

Turning the device OFF

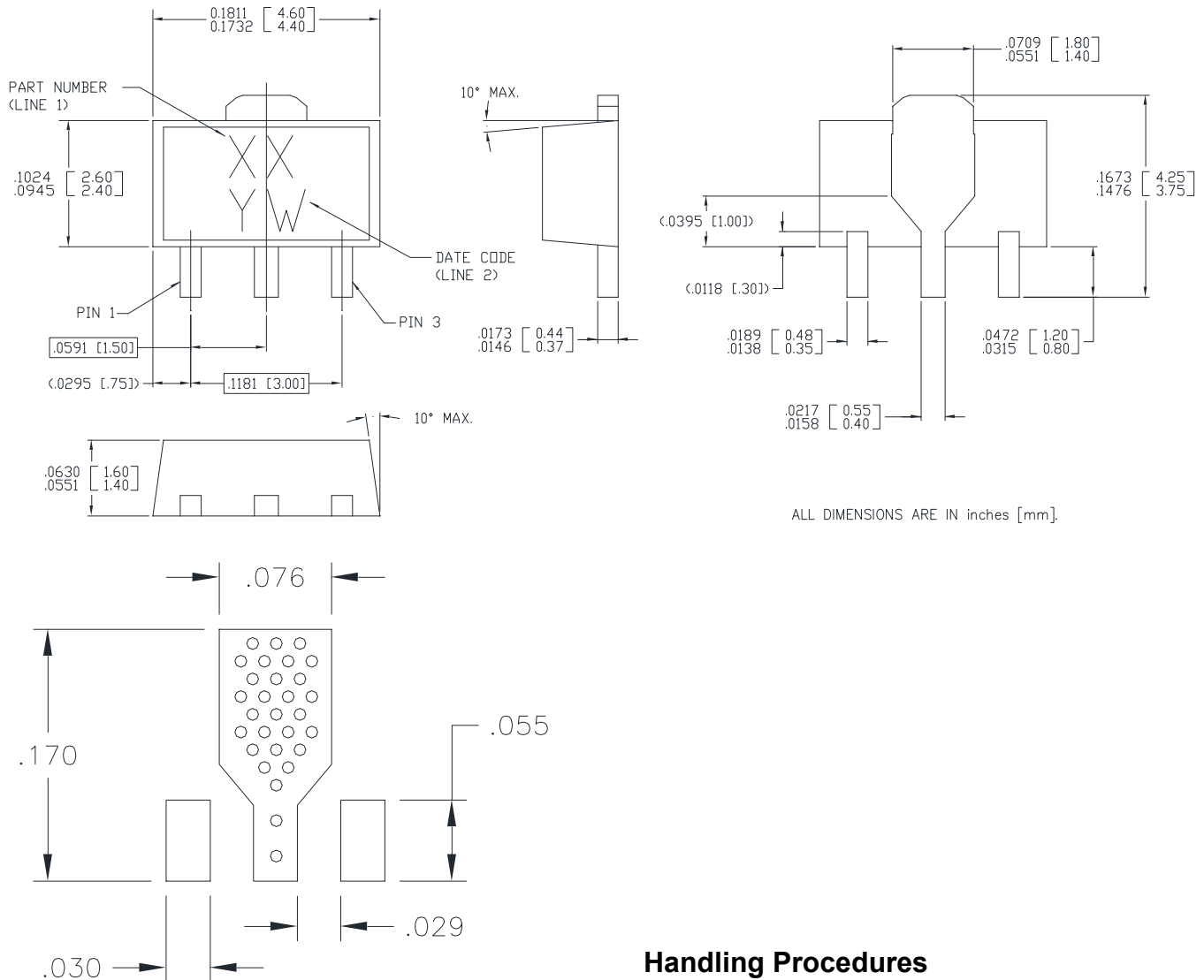
1. Turn the RF power off.
2. Decrease V_G down to V_P .
3. Turn off V_D .
4. Turn off V_G .

Parts List, 2.9 - 3.3 GHz

Part	Description
C1	5.6 pF, 600L, ATC
C2	5.6 pF, 600L, ATC
C3	1 pF 0.02 pF, 600L, ATC ¹⁰
C4	1 pF, 600L, ATC
C5	10 nF, 0402, Murata
C6	0.8 pF, 600L, ATC
C7	1.5 pF, 600L, ATC
C8	2.4 pF, 600L, ATC
C9	1 nF, 0603, Murata
C10	10 nF, 0603, Murata
C11	1.1 pF, 600L, ATC
C12	1.5 pF, 600L, ATC
C13	1.6 pF, 600L, ATC
C14	1.3 pF, 600L, ATC
C15	0.6 pF, 600L, ATC
C16	0.2 pF, 600L, ATC
C17	0.6 pF, 600L, ATC
C18	0.3 pF, 600L, ATC
L1	56 nH, 0402HP, Coilcraft
L2	12 nH, 0402HP, Coilcraft
R1	100 Ω , 0402, Panasonic
R2	1.2 k Ω , 0402, Panasonic
R3	100 Ω , 0402, Panasonic

10. Parallel combination of two capacitors.

SOT-89 Package Outline and Landing Pattern^{11,12}



Handling Procedures

Please observe the following precautions to avoid damage:

Static Sensitivity

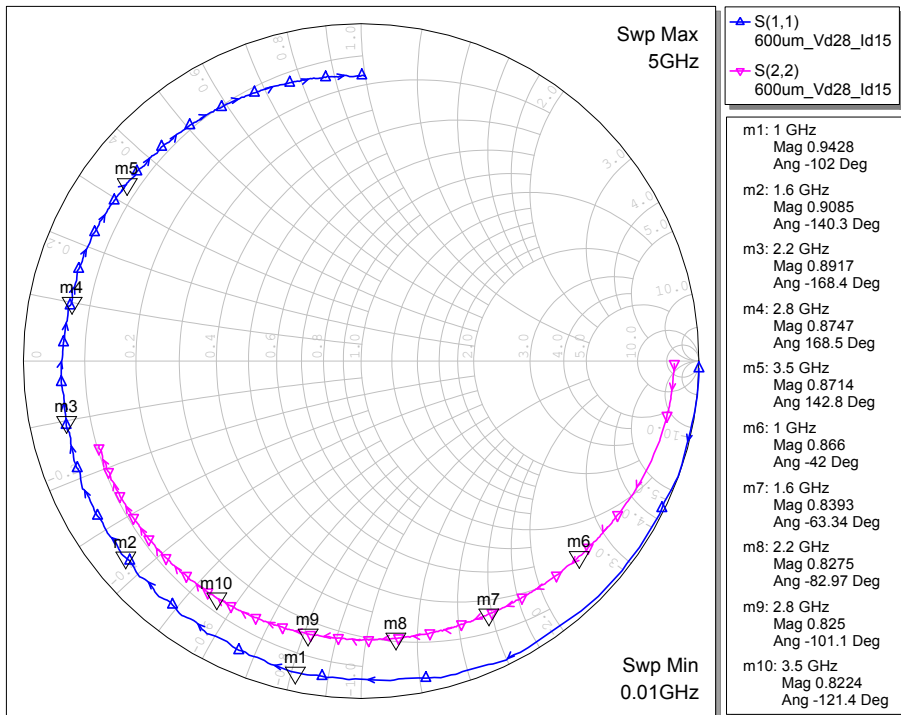
Gallium Nitride Devices and Circuits are sensitive to electrostatic discharge (ESD) and can be damaged by static electricity. Proper ESD control techniques should be used when handling these Class 1A devices.

11. Reference Application Note M538 for lead-free solder reflow recommendations. Meets JEDEC moisture sensitivity level 1 requirements. Lead plating is 100% Sn matte.
12. Landing pattern indicates dimensions of solder mask opening. Cu-filled via holes under the ground are typically used for optimal thermal performance. Recommended pattern: 8 mil diameter, 8 mil spacing.

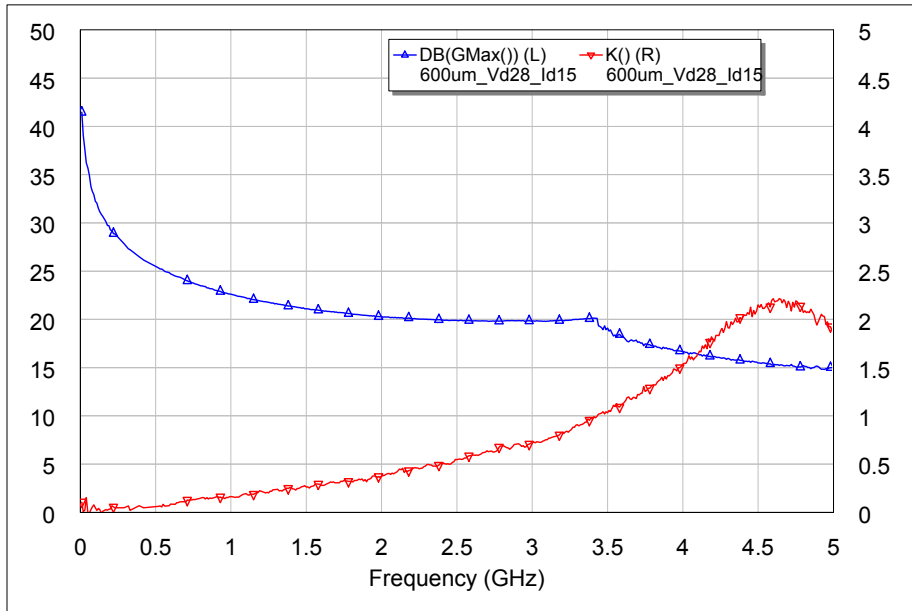
Applications Section

S-Parameter Data: $T_A = 25^\circ\text{C}$, $V_{DD} = 28\text{ V}$, $I_{DQ} = 15\text{ mA}$

Device S11 and S22



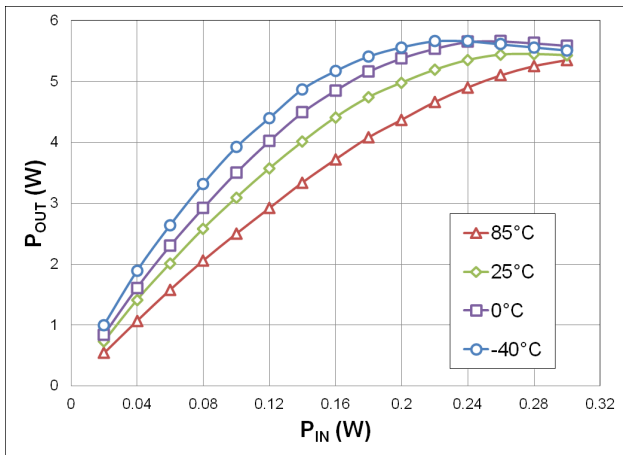
Gmax and K-Factor vs Frequency



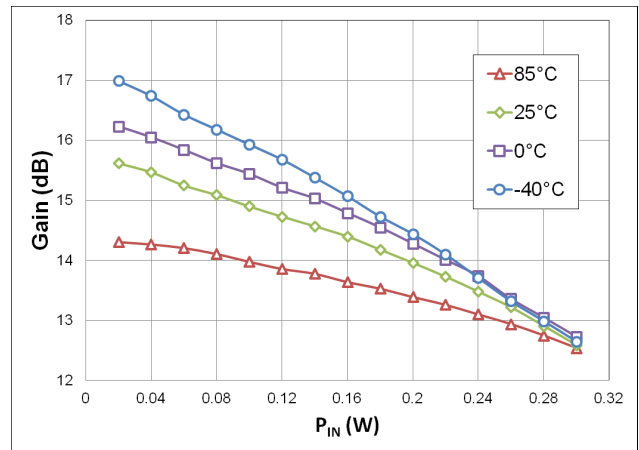
Applications Section

Typical Performance Curves (reference 1.4-1.6 GHz parts list):
1.6 GHz, 1 ms Pulse, 10% Duty Cycle, $V_{DD} = 50\text{ V}$, $T_A = 25^\circ\text{C}$, $Z_0 = 50\ \Omega$

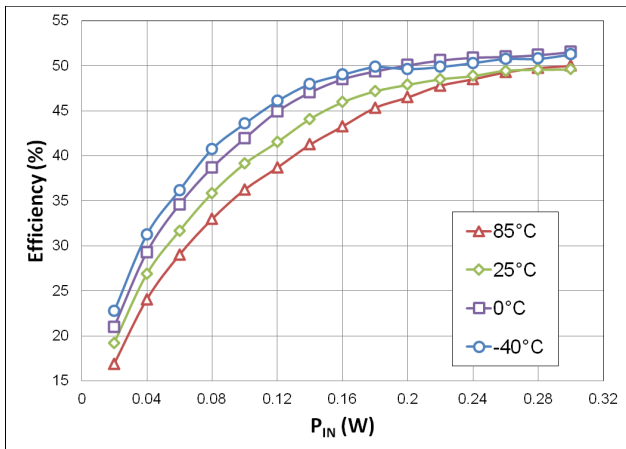
Output Power vs. Input Power



Gain vs. Input Power



Drain Efficiency vs. Input Power

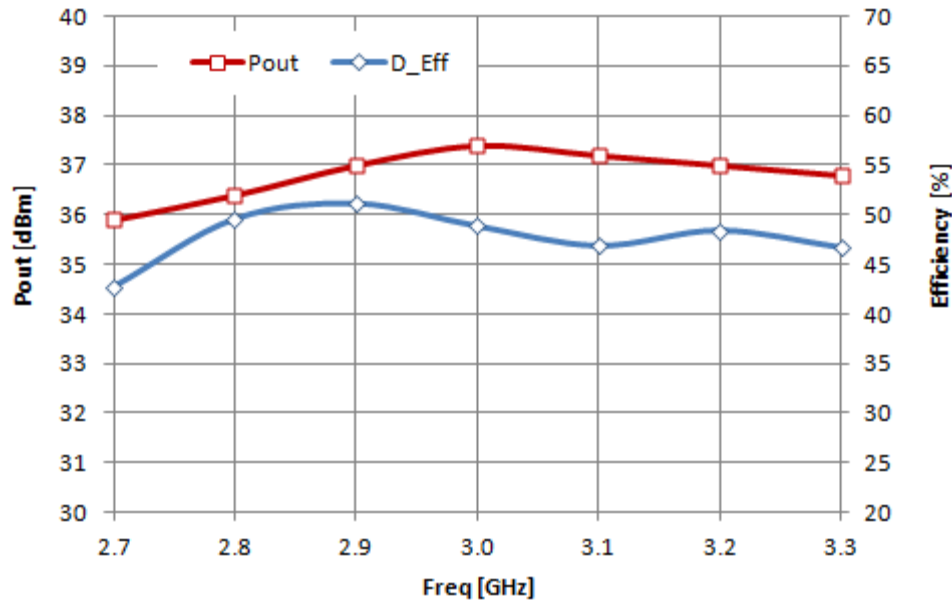


Applications Section

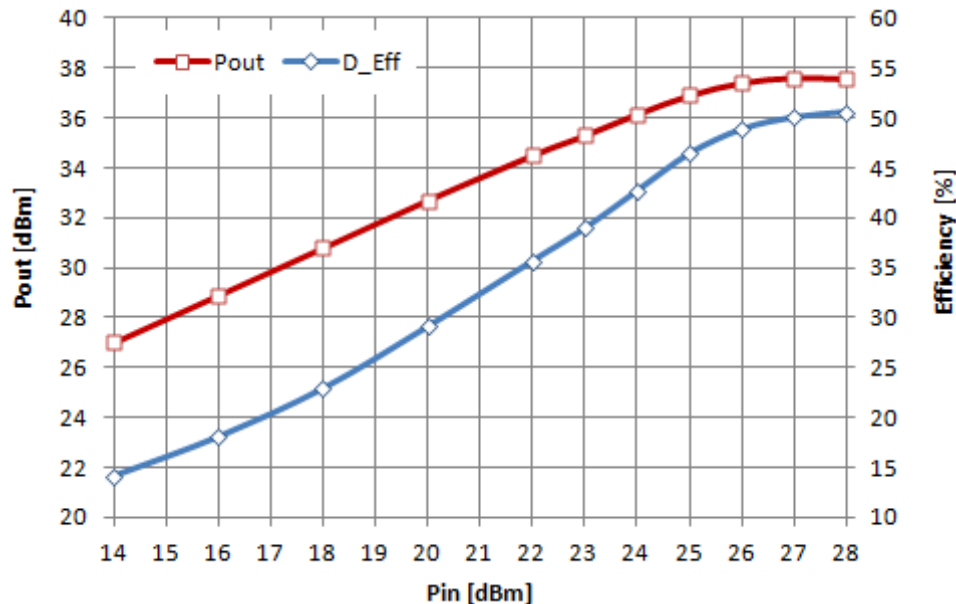
Typical Performance Curves (reference 2.9-3.3 GHz parts list):

300 μ s Pulse, 10% Duty Cycle, $V_{DD} = 50$ V, $T_A = 25^\circ\text{C}$, $Z_0 = 50 \Omega$

Output Power and Efficiency vs. Frequency ($P_{IN} = 26$ dBm)



Output Power and Efficiency vs. Input Power (Frequency = 3.0 GHz)



Компания «Life Electronics» занимается поставками электронных компонентов импортного и отечественного производства от производителей и со складов крупных дистрибьюторов Европы, Америки и Азии.

С конца 2013 года компания активно расширяет линейку поставок компонентов по направлению коаксиальный кабель, кварцевые генераторы и конденсаторы (керамические, пленочные, электролитические), за счёт заключения дистрибьюторских договоров

Мы предлагаем:

- Конкурентоспособные цены и скидки постоянным клиентам.
- Специальные условия для постоянных клиентов.
- Подбор аналогов.
- Поставку компонентов в любых объемах, удовлетворяющих вашим потребностям.
- Приемлемые сроки поставки, возможна ускоренная поставка.
- Доставку товара в любую точку России и стран СНГ.
- Комплексную поставку.
- Работу по проектам и поставку образцов.
- Формирование склада под заказчика.
- Сертификаты соответствия на поставляемую продукцию (по желанию клиента).
- Тестирование поставляемой продукции.
- Поставку компонентов, требующих военную и космическую приемку.
- Входной контроль качества.
- Наличие сертификата ISO.

В составе нашей компании организован Конструкторский отдел, призванный помогать разработчикам, и инженерам.

Конструкторский отдел помогает осуществить:

- Регистрацию проекта у производителя компонентов.
- Техническую поддержку проекта.
- Защиту от снятия компонента с производства.
- Оценку стоимости проекта по компонентам.
- Изготовление тестовой платы монтаж и пусконаладочные работы.



Тел: +7 (812) 336 43 04 (многоканальный)

Email: org@lifeelectronics.ru