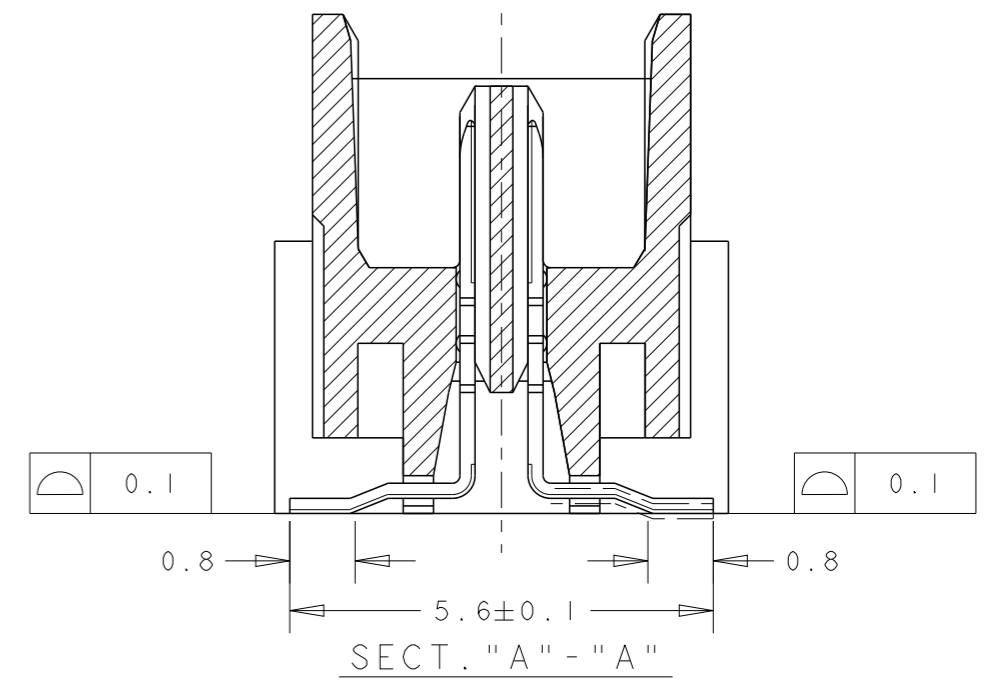
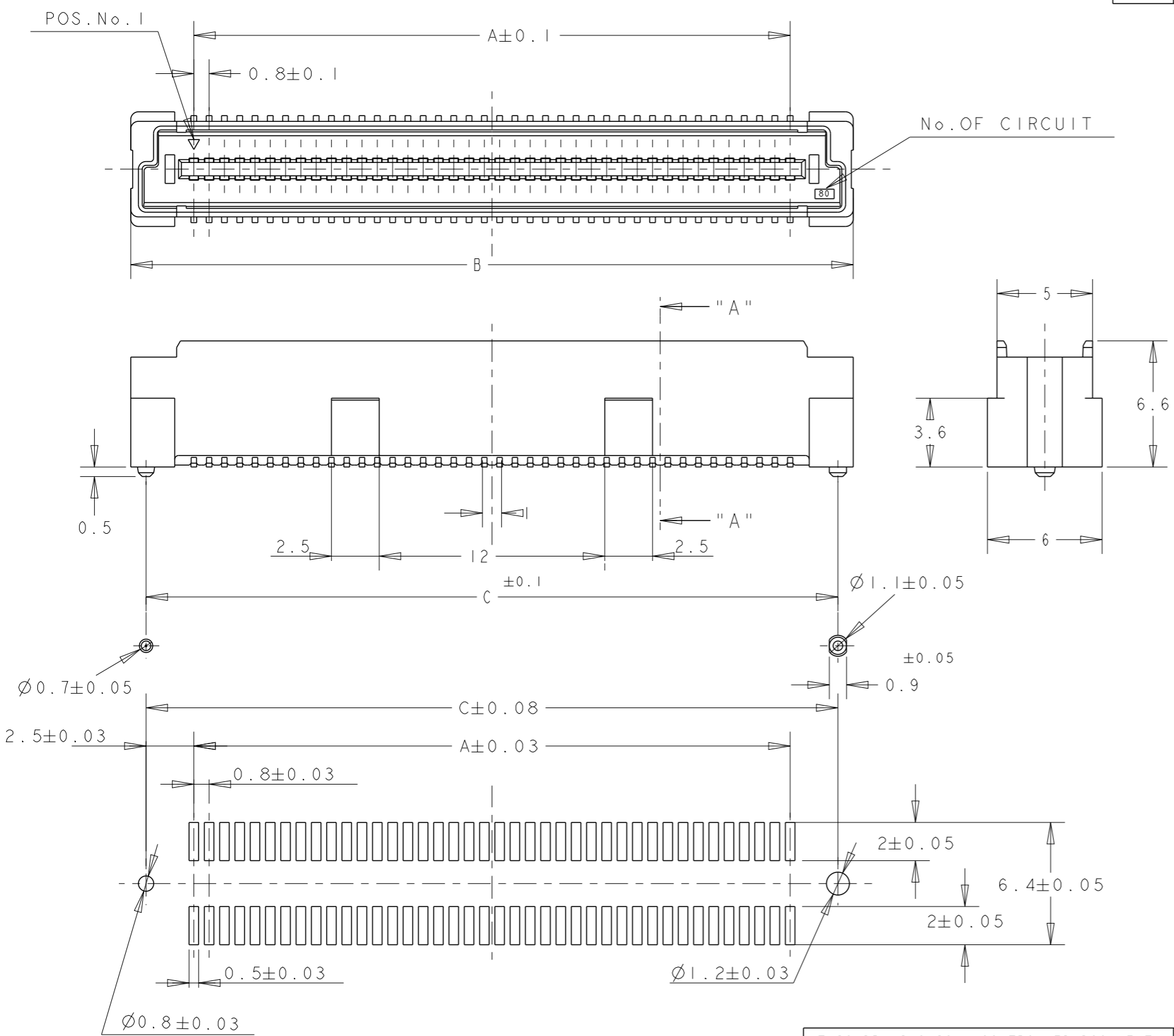


THIS DRAWING IS UNPUBLISHED. RELEASED FOR PUBLICATION 20
 © COPYRIGHT 20 BY - ALL RIGHTS RESERVED.


| LOC | | DIST | | REVISIONS | | | |
|-----|-----|-------------|---------------------------|-----------|------|----|--|
| P | LTR | DESCRIPTION | DATE | DWN | APVD | | |
| DY | - | B2 | REVISED PER ECR-12-021394 | 12DEC12 | IT | SY | |



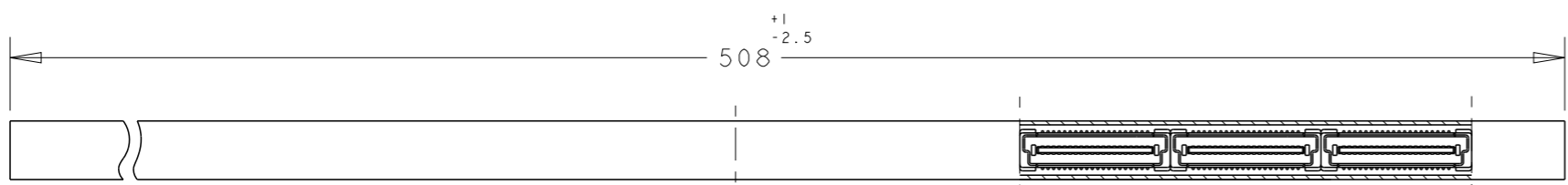
- NOTES:
- 1 MATERIAL:
HOUSING: L.C.P. (HIGH TEMP THERMO PLASTIC)
UL 94V-0, NATURAL.
CONTACT: BRASS.
 - 2 FINISH:
CONTACT AREA: 0.0002 MIN GOLD ON
0.0013 MIN ALL OVER NICKEL.
 - 3 SOLDERING AREA: 0.002 MIN MATTE-TIN.
 - 4 POSITION SERIES: SEE TABLE.
CONN STACK HEIGHT COMBINE OF PLUG "Y" H VS REC "X" H.
STACK HEIGHT = Y + X - 5
 - 5 FINISH:
CONTACT AREA: 0.00076 MIN GOLD ON
0.0013 MIN ALL OVER NICKEL.
SOLDERING AREA: 0.002 MIN MATTE-TIN.
 - 6 OBSOLETE PARTS: OBSOLETE CIS STREAMLINING PER
D.RENAUD/D.SINISI.
 - 7 FINISH:
CONTACT AREA: 0.00038 MIN GOLD ON
0.0013 MIN ALL OVER NICKEL.
SOLDERING AREA: 0.002 MIN MATTE-TIN.

P/N SEE SHEET 2 AND 3 OF 3

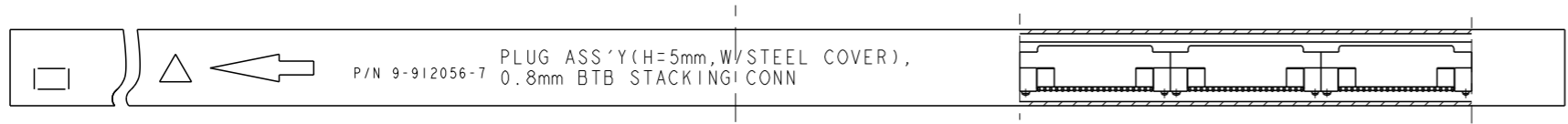
RECOMMENDED P.C. BOARD LAYOUT

| | | | | |
|---|--|--------------------------------|---|-----------------|
| THIS DRAWING IS A CONTROLLED DOCUMENT. | | DWN FLORENCE TAN 30AUG04 |  TE Connectivity | |
| DIMENSIONS: mm | | CHK ERIC TNG | | |
| TOLERANCES UNLESS OTHERWISE SPECIFIED: | | APVD SE LEONG | NAME PLUG ASSEMBLY 7H TYPE (0.5 BOSS LENGTH) FOR FH 0.8mm PITCH BTB CONNECTOR | |
| 0 PLC ± 1 PLC ±0.30 2 PLC ±0.25 3 PLC ±0.20 4 PLC ± ANGLES ±3° | | PRODUCT SPEC 108-5390 | SIZE A300779 | |
| MATERIAL | | APPLICATION SPEC 114-5254 | DRAWING NO C-5179030 | |
| FINISH SEE P/N TABLE | | WEIGHT - | RESTRICTED TO - | |
| | | CUSTOMER DRAWING | SCALE 4:1 | SHEET 1 OF 3 |
| | | | REV B2 | |

| LOC | | DIST | | REVISIONS | | | |
|-----|-----|-------------|--|-----------|-----|------|--|
| P | LTR | DESCRIPTION | | DATE | DWN | APVD | |
| | | SEE HEET 1 | | | | | |



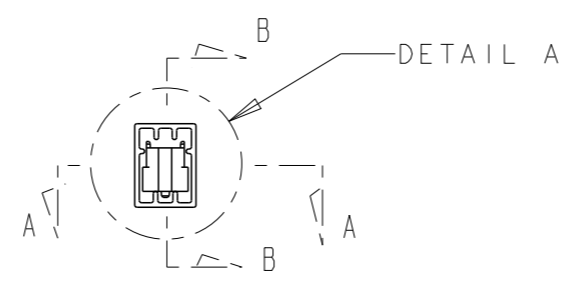
SECT A-A



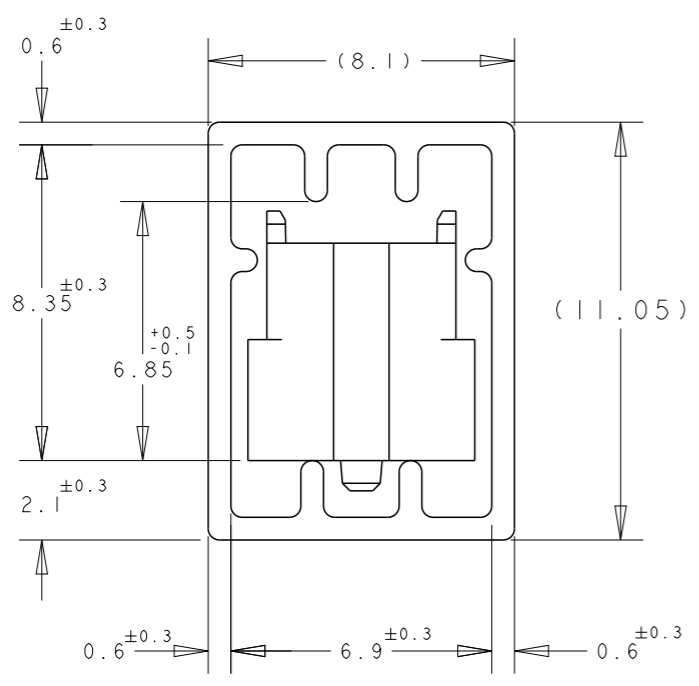
SECT B-B

PLUG ASS'Y (H=5mm, W/STEEL COVER),
 P/N 9-912056-7 0.8mm BTB STACKING CONN

REFERENCE PICTURE OF TUBE PACK



DETAIL A



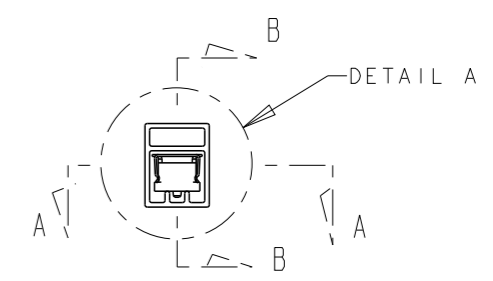
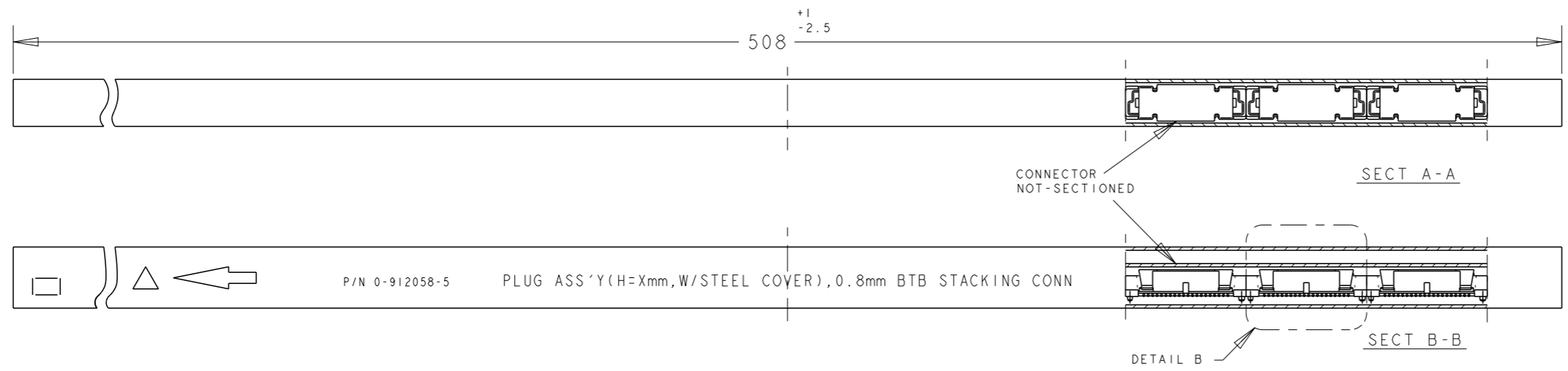
DETAIL "B"
 (SCALE 5-1)

| CNT | PLT | 5 | 6 | 7 | 8 | 9 | 10 | 12 | 16 | 22 | QTY/TUBE | CONN P/N |
|-----------------|---------------|----------|------|------|------|------|----------|----|----|----|-----------|----------|
| CNT PLT 15Au/Sn | NOT AVAILABLE | 5 | 84.2 | 85.8 | 79.2 | 200 | 4- | -0 | | | | |
| | | 6 | 76.2 | 77.8 | 71.2 | 180 | 3- | -9 | | | | |
| | | 6 | 68.2 | 69.8 | 63.2 | 160 | 3- | -8 | | | | |
| | AVAILABLE | 7 | 60.2 | 61.8 | 55.2 | 140 | 3- | -6 | | | | |
| | | 9 | 52.2 | 53.8 | 47.2 | 120 | 3- | -5 | | | | |
| | | 10 | 44.2 | 45.8 | 39.2 | 100 | 3- | -4 | | | | |
| | | 12 | 36.2 | 37.8 | 31.2 | 80 | 3- | -3 | | | | |
| NOT AVAILABLE | 16 | 28.2 | 29.8 | 23.2 | 60 | 3- | -2 | | | | | |
| | 22 | 20.2 | 21.8 | 15.2 | 40 | 3- | -1 | | | | | |
| | △ | | | | | | | | | | | |
| | AVAILABLE | 7 | 64.2 | 65.8 | 59.2 | 150 | 1- | -7 | | | | |
| | | 7 | 60.2 | 61.8 | 55.2 | 140 | 1- | -6 | | | | |
| 9 | | 52.2 | 53.8 | 47.2 | 120 | 1- | -5 | | | | | |
| 10 | | 44.2 | 45.8 | 39.2 | 100 | 1- | -4 | | | | | |
| CNT PLT 30Au/Sn | AVAILABLE | 12 | 36.2 | 37.8 | 31.2 | 80 | 1- | -3 | | | | |
| | | 16 | 28.2 | 29.8 | 23.2 | 60 | 1- | -2 | | | | |
| | | 22 | 20.2 | 21.8 | 15.2 | 40 | 1- | -1 | | | | |
| | △ | | | | | | | | | | | |
| | AVAILABLE | 5 | 84.2 | 85.8 | 79.2 | 200 | 1- | -0 | | | | |
| | | 6 | 76.2 | 77.8 | 71.2 | 180 | | -9 | | | | |
| 6 | | 68.2 | 69.8 | 63.2 | 160 | | -8 | | | | | |
| 7 | | 64.2 | 65.8 | 59.2 | 150 | | -7 | | | | | |
| CNT PLT 08Au/Sn | AVAILABLE | 7 | 60.2 | 61.8 | 55.2 | 140 | | -6 | | | | |
| | | 9 | 52.2 | 53.8 | 47.2 | 120 | | -5 | | | | |
| | | 10 | 44.2 | 45.8 | 39.2 | 100 | | -4 | | | | |
| | AVAILABLE | 12 | 36.2 | 37.8 | 31.2 | 80 | | -3 | | | | |
| | | 16 | 28.2 | 29.8 | 23.2 | 60 | | -2 | | | | |
| | | 22 | 20.2 | 21.8 | 15.2 | 40 | | -1 | | | | |
| | | △ | | | | | | | | | | |
| | | 22 | 20.2 | 21.8 | 15.2 | 40 | | -1 | | | 5179030-1 | |
| FINISH | AVAILABILITY | QTY/TUBE | C | B | A | POS. | CONN P/N | | | | | |

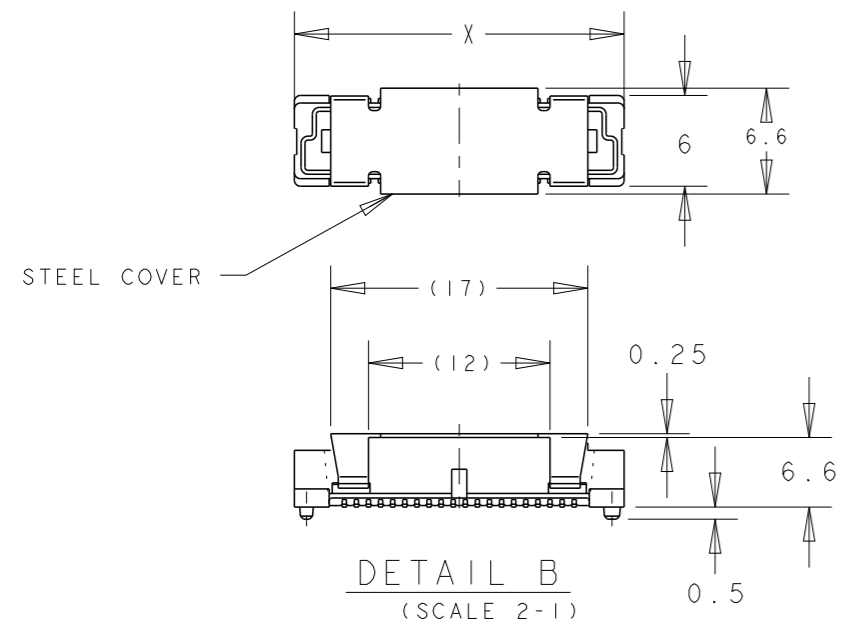
| | | | | | | | |
|---|--|--------------------------|--|-------------------------------|--|--|--|
| THIS DRAWING IS A CONTROLLED DOCUMENT. | | DWN FLORENCE TAN 30AUG04 | | TE Connectivity | | | |
| DIMENSIONS: mm | | CHK ERIC TNG | | | | NAME | |
| TOLERANCES UNLESS OTHERWISE SPECIFIED: 0 PLC ±- 1 PLC ±0.30 2 PLC ±0.25 3 PLC ±0.20 4 PLC ±- ANGLES ±3° FINISH SEE P/N TABLE | | APVD SE LEONG | | | | PLUG ASSEMBLY 7H TYPE (0.5 BOSS LENGTH) FOR FH 0.8mm PITCH BTB CONNECTOR | |
| MATERIAL | | PRODUCT SPEC 108-5390 | | APPLICATION SPEC 114-5254 | | | |
| | | WEIGHT - | | SIZE A300779C-5179030 | | | |
| | | CUSTOMER DRAWING | | SCALE 4:1 SHEET 2 OF 3 REV B2 | | | |

THIS DRAWING IS UNPUBLISHED. RELEASED FOR PUBLICATION 20
 © COPYRIGHT 20 BY - ALL RIGHTS RESERVED.

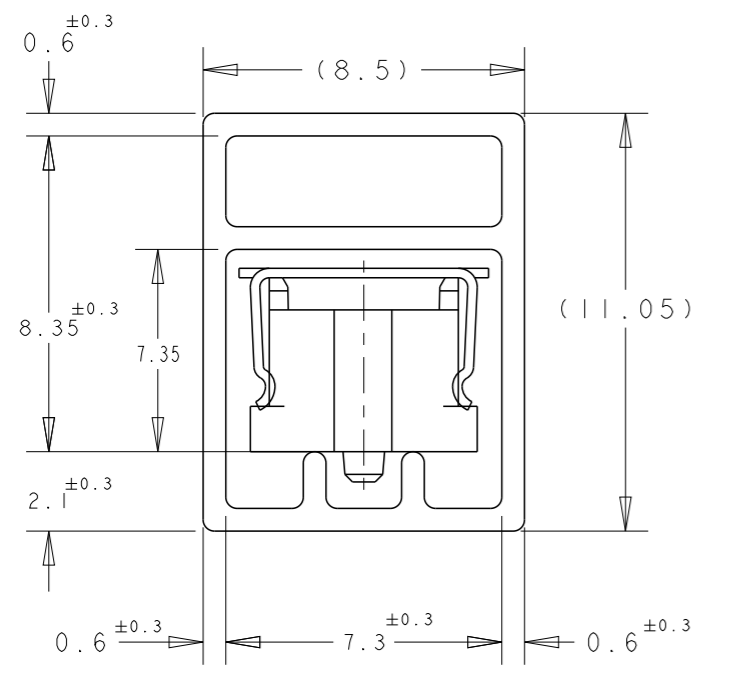
| LOC | DIST | REVISIONS | | | | | |
|-----|------|-----------|-----|-------------|------|-----|------|
| DY | - | P | LTR | DESCRIPTION | DATE | DWN | APVD |
| | | | | SEE HEET I | | | |



PLUG TUBE ASSY WITH STEEL COVER FOR FH 0.8 B-T-B CONNECTOR



DETAIL B (SCALE 2-1)



DETAIL A (SCALE 5-1)

| | | | | | | | |
|-------------------------|------------------|-----------|------|------|-------------|----|----|
| CNT PLT 30Au/Sn 5 | AVAILABLE | 5 | 85.8 | 200 | 3- | -0 | |
| | | 6 | 77.8 | 180 | 2- | -9 | |
| | | 6 | 69.8 | 160 | 2- | -8 | |
| | WITH STEEL COVER | AVAILABLE | 7 | 65.8 | 150 | 2- | -7 |
| | | | 7 | 61.8 | 140 | 2- | -6 |
| | | | 9 | 53.8 | 120 | 2- | -5 |
| | | | 10 | 45.8 | 100 | 2- | -4 |
| | | | 12 | 37.8 | 80 | 2- | -3 |
| | | | 16 | 29.8 | 60 | 2- | -2 |
| | | 22 | 21.8 | 40 | 2-5179030-1 | | |
| FINISH/REMARKS | AVAILABILITY | QTY/TUBE | X | POS. | CONN P/N | | |

THIS DRAWING IS A CONTROLLED DOCUMENT.

| | |
|-------------------|--|
| DIMENSIONS: mm | TOLERANCES UNLESS OTHERWISE SPECIFIED: |
| | 0 PLC ±- |
| | 1 PLC ±0.30 |
| | 2 PLC ±0.25 |
| | 3 PLC ±0.20 |
| | 4 PLC ±- |
| | ANGLES ±3° |
| MATERIAL | FINISH |
| | SEE P/N TABLE |

DWN 30AUG04
 FLORENCE TAN
 CHK ERIC TNG
 APVD SE LEONG
 PRODUCT SPEC 108-5390
 APPLICATION SPEC 114-5254
 WEIGHT -
 CUSTOMER DRAWING

STE TE Connectivity

NAME
 PLUG ASSEMBLY 7H TYPE
 (0.5 BOSS LENGTH)
 FOR FH 0.8mm PITCH BTB CONNECTOR

| | | | |
|---------|-----------|------------|---------------|
| SIZE | CAGE CODE | DRAWING NO | RESTRICTED TO |
| A300779 | C=5179030 | | - |

SCALE 4:1 SHEET 3 OF 3 REV B2

Компания «Life Electronics» занимается поставками электронных компонентов импортного и отечественного производства от производителей и со складов крупных дистрибьюторов Европы, Америки и Азии.

С конца 2013 года компания активно расширяет линейку поставок компонентов по направлению коаксиальный кабель, кварцевые генераторы и конденсаторы (керамические, пленочные, электролитические), за счёт заключения дистрибьюторских договоров

Мы предлагаем:

- Конкурентоспособные цены и скидки постоянным клиентам.
- Специальные условия для постоянных клиентов.
- Подбор аналогов.
- Поставку компонентов в любых объемах, удовлетворяющих вашим потребностям.
- Приемлемые сроки поставки, возможна ускоренная поставка.
- Доставку товара в любую точку России и стран СНГ.
- Комплексную поставку.
- Работу по проектам и поставку образцов.
- Формирование склада под заказчика.
- Сертификаты соответствия на поставляемую продукцию (по желанию клиента).
- Тестирование поставляемой продукции.
- Поставку компонентов, требующих военную и космическую приемку.
- Входной контроль качества.
- Наличие сертификата ISO.

В составе нашей компании организован Конструкторский отдел, призванный помогать разработчикам, и инженерам.

Конструкторский отдел помогает осуществить:

- Регистрацию проекта у производителя компонентов.
- Техническую поддержку проекта.
- Защиту от снятия компонента с производства.
- Оценку стоимости проекта по компонентам.
- Изготовление тестовой платы монтаж и пусконаладочные работы.



Тел: +7 (812) 336 43 04 (многоканальный)

Email: org@lifeelectronics.ru