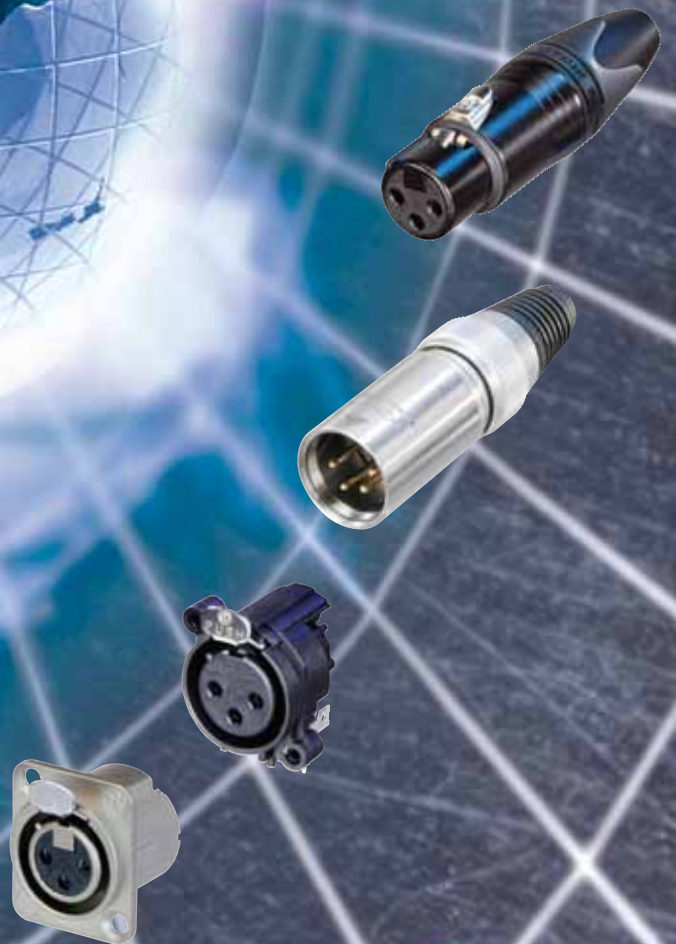


## Neutrik® Part Number Guide

### NC3FAH1-0-X

|                            |                             |  |        |
|----------------------------|-----------------------------|--|--------|
| <b>Shell:</b>              | <b>B</b>                    | Black shell, gold contacts   |        |
|                            | <b>BAG</b>                  | Black shell, silver contacts                                       |        |
| <b>Retention:</b>          | <b>w/o</b>                  | Latch Lock   |        |
|                            | <b>-0</b>                   | Retention Spring   |        |
| <b>Grounding:</b>          | <b>0</b>                    | Separate ground contact connected to shell, male only              |        |
|                            | <b>1</b>                    | Pin 1 & Panel & Shell connected, no separate ground contact        |        |
|                            | <b>2</b>                    | Separate ground contact connected to shell & panel, separate Pin 1 |        |
|                            | <b>E</b>                    | Additional ground contacts   |        |
|                            | <b>w/o number</b>           | No ground / Shell contact (except 4 / 5 pole), female only         |        |
| <b>Termination:</b>        | <b>H</b>                    | Horizontal PCB mount   |        |
|                            | <b>HL</b>                   | Lateral left PCB mount   |        |
|                            | <b>HR</b>                   | Lateral right PCB mount  |        |
|                            | <b>L</b>                    | Solder Cups  |        |
|                            | <b>V</b>                    | Vertical PCB mount   |        |
|                            | <b>Y</b>                    | IDC for wires (no ground)  |        |
|                            | <b>M3</b>                   | Mounting holes with M3 thread                                      |        |
|                            | <b>M25</b>                  | Mounting holes with M2.5 thread                                    |        |
|                            | <b>-</b>                    | Not applicable   |        |
|                            | <b>Series:</b>              | <b>A, AA, B, BA, D, DL, DLX, MPR, P, X, XX</b>                     |        |
|                            | <b>Gender:</b>              | <b>F</b>   | Female |
| <b>M</b>                   |                             | Male   |        |
| <b>Number of Contacts:</b> | <b>3, 4, 5, 6, 7, 8, 12</b> |  |        |
| <b>Connector Type:</b>     | <b>A</b>                    | Adapter  |        |
|                            | <b>AC</b>                   | PowerCon®  |        |
|                            | <b>B</b>                    | BNC  |        |
|                            | <b>C</b>                    | Connector  |        |
|                            | <b>E</b>                    | RJ45   |        |
|                            | <b>F</b>                    | RCA / CINCH  |        |
|                            | <b>J (MJ, RJ, SJ)</b>       | Jack   |        |
|                            | <b>K</b>                    | Cable Assemblies   |        |
|                            | <b>L</b>                    | Loudspeaker  |        |
|                            | <b>M</b>                    | Modules  |        |
|                            | <b>O</b>                    | Fiber Connector  |        |
|                            | <b>P</b>                    | Plugs  |        |
|                            | <b>PP</b>                   | Patch Panel  |        |
|                            | <b>R</b>                    | Circular Connector   |        |
| <b>T</b>                   | Transformer                 |  |        |

# XLR Connectors



## Content

## Page

|                            |    |  |    |
|----------------------------|----|--|----|
| Cable Connectors:          |    | Receptacles:                                   |    |
| XX Series .....            | 9  | A Series .....                                 | 15 |
| EMC-XLR Series .....       | 9  | AA Series .....                                | 15 |
| RX Series .....            | 10 | B Series .....                                 | 16 |
| XX-HE .....                | 10 | BA Series .....                                | 16 |
| X Series .....             | 11 | A/B Series 5 pole switch .....                 | 17 |
| X-HD Series .....          | 11 | D Series .....                                 | 17 |
| XCC Series .....           | 12 | DL Series .....                                | 18 |
| FXS Series .....           | 12 | DLX Series .....                               | 18 |
| FX-SPEC Series .....       | 12 | EMC .....                                      | 19 |
| Technical Data .....       | 13 | MPR-HD Series .....                            | 19 |
| Ordering Information ..... | 14 | P Series .....                                 | 20 |
|                            |    | Combo .....                                    | 20 |
|                            |    | Accessories .....                              | 21 |
|                            |    | Technical Data .....                           | 22 |
|                            |    | Ordering Information A/AA Series .....         | 23 |
|                            |    | Ordering Information B/BA Series .....         | 24 |
|                            |    | Ordering Information D/DL/P/Combo Series ..... | 25 |
|                            |    | Panel Cutouts, Assembly Tools .....            | 26 |

## Introduction

The XLR connector series is probably together with the Speakon® series Neutrik's most known product range and has due to the simple but striking concept been one of the most important keys to our great success.

We introduced the first XLR version more than 25 years ago, meanwhile it became the worldwide accepted standard.

XLR connectors are widely used in various applications of the professional audio world. Whether as microphone connector, on lighting applications or any kind of sound equipment, the XLR is all over the entertainment industry.

Keyfeatures are:

- Reliable and robust
- Easy to assemble, simple to use
- Excellent cable protection and retention
- Colour coding
- Available in 3 to 7 pole

The reason for the outstanding success of the series is in accompany with these features a constant and peerless quality.

Q u a l i t y   T h i n k i n g

# XLR Cable Connectors



## XX Series

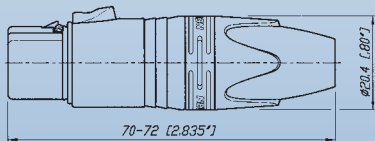


NC3FXX

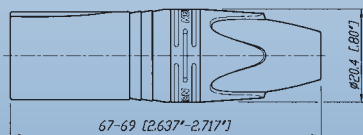
NC3MXX-B

- The next generation of the worldwide accepted standard
- Unique cage type female contact - increases conductivity
- Female contact with "solder stop" for ease soldering
- Male connector without locking "window" - more stringent housing, increases durability
- Improved chuck type strain relief - increases retention force and makes assembly easier and faster
- New ground contact - excellent contact integrity between chassis and cable connector
- Customized branding using translucent ring
- Sleek and ergonomic design - valuable and handy

### NC\*FXX



### NC\*MXX



\* ... 3 - 7 contacts



## EMC-XLR Series



NC3FXX-EMC

NC3MXX-EMC

- 3-pole male / female XLR cable connector with integrated capacitive shield to shell connection to avoid RF-interference and LF-noise
- 360° shield contact on female connector ensures best possible shielding and chassis contact
- Patent pending



- ① Design guarantees a continuous RF-shield connection but avoids ground loops (no LF-shield connection)
- ② Circular capacitor enables low-inductive shield connection to connector housing
- ③ Cable shield - PIN 1 connection includes EMI suppression bead (blocks high frequencies)



- Quality Design

# XLR Cable Connectors



## RX Series

## XX-HE Series

**NEW**



NC3FRX



Outlet position

**NEW**



NC3FXX-HE

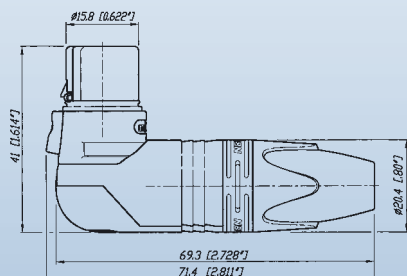


NC3MXX-HE

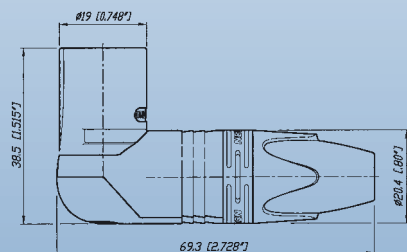
- Right angle version of the XX Series - only 20 mm wide
- Extra slim right-angle connector
- Neutrik chuck type strain relief
- 5 selectable cable outlet positions

- Exclusive version of standard XX Series
- Valuable velour chromium plating
- Extra high temperature resistant insulator material
- Machined female contacts

NC\*FRX



NC\*MRX



NC3FXX-HE



NC3MXX-HE



\* ... 3 - 7 contacts

Look for the Logo



# XLR Cable Connectors



## X Series

## X-HD Series



NC3FX



NC3MX



NC5FX-HD



NC4MX-HD

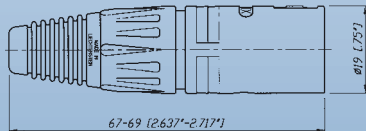
- The worldwide accepted XLR connector standard
- Rugged diecast shell
- Compact design (shortest available XLR cable connector)
- Time saving assembly – 4 parts only, no screws
- Neutrik unique chuck type strain relief
- Gold or silver plated contacts
-  UL Recognized components
- Available in 3 - 7 pin configuration

- "Heavy duty" cable connectors for outdoor use
- All metal design, male stainless steel
- NC\*FX-HD mates with NC\*MPR-HD chassis connector and NC\*MX-HD
- Dust and water protected according IP 65 in mated condition
- Available in 3 - 5 pin configuration

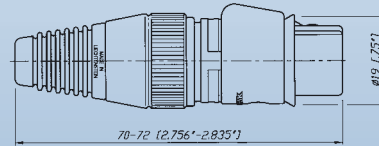
NC\*FX



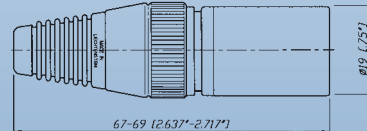
NC\*MX



NC\*FX-HD



NC\*MX-HD



\* ... 3 - 7 contacts

\* ... 3 - 5 contacts

t o i d e n t i f y t h e o r i g i n a l

# XLR Cable Connectors



**XCC Series**



**FXS Series**



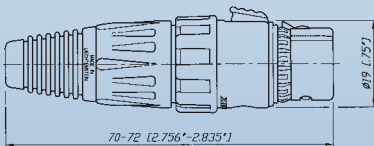
**FX-SPEC Series**



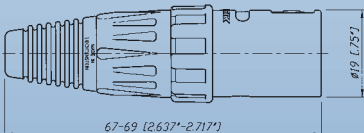
NC3FXCC

- 3 pole cable connector with a circumferential shield contact for best EMI protection
- Featuring a coaxial ground spring and coaxial hex crimp ferrule at the cable entrance for proper and reliable transition of the cable shield to the shell
- Zebra coding ring to indicate digital AES signals included

**NC3FXCC**



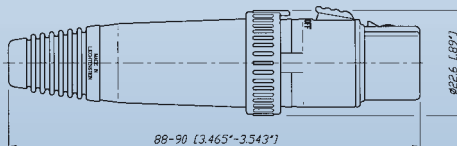
**NC3MXCC**



NC3FXS

- FX connector with noiseless ON-OFF switch short-circuiting contacts 2 + 3
- For use on a microphone without switch

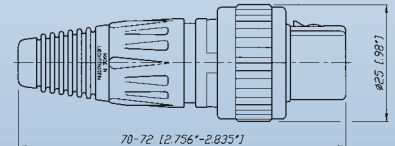
**NC3FXS**



NC3FX-SPEC

- Solid female cable connector with locking ring for highest security of connection
- Uninterrupted EMI protection
- Protect against accidental disconnects
- Thief-proof, grub screw secure connector onto microphone or gooseneck
- Avoids movements and noises

**NC3FX-SPEC**



**Quality Thinking**

# Technical Data

| Specification                           |   | XX Series | EMC Series | X Series | XCC Series   | X-HD Series | FXS Series | XX-HE Series | FX-SPEC Series | RX Series |
|---|---|-----------|------------|----------|--------------|-------------|------------|--------------|----------------|-----------|
| <b>Electrical</b>                       |   |           |            |          |              |             |            |              |                |           |
| Number of contacts                      |   | 3 - 7     | 3          | 3 - 7    | 3            | 3 - 5       | 3          | 3            | 3              | 3 - 7     |
| Contact resistance                      | ≤ 3 mΩ  | ●         | ●          | ●        | ●            | ●           | ●          | ●            | ●              | ●         |
| Insulation resistance                   | - initial: > 2 GΩ                             | ●         | ●          | ●        | ●            | ●           | ●          | ●            | ●              | ●         |
|   | - after damp heat test: > 1 GΩ                | ●         | ●          | ●        | ●            | ●           | ●          | ●            | ●              | ●         |
| Dielectric strength                     | 1500 V dc                                     | ●         | ●          | ●        | ●            | ●           | ●          | ●            | ●              | ●         |
| Cable shield-shell connection           | choosable                                     | ●         | -          | ●        | -            | ●           | -          | ●            | ●              | ●         |
|   | determined                                    | -         | capacitive | -        | crimp        | -           | -          | -            | -              | -         |
| Shielding effectiveness                 | > 55 dB @ 1.3 GHz                             | -         | ●          | -        | ●            | -           | -          | -            | -              | -         |
| Lossy ferrite bead on PIN 1             |   | -         | ●          | -        | -            | -           | -          | -            | -              | -         |
| Rated current per contact @ 35°C        |   |           |            |          |              |             |            |              |                |           |
|   | 3 pole: 16 A                                  | ●         | 5 A        | ●        | ●            | ●           | ●          | ●            | ●              | ●         |
|   | 4 pole: 10 A                                  | ●         | -          | ●        | -            | ●           | -          | -            | -              | ●         |
|   | 5, 6 pole: 7.5 A                              | ●         | -          | ●        | -            | ●           | -          | -            | -              | ●         |
|   | 7 pole: 5 A                                   | ●         | -          | ●        | -            | -           | -          | -            | -              | ●         |
| Capacitance between contacts            |   |           |            |          |              |             |            |              |                |           |
|   | 3 pole: ≤ 4 pF                                | ●         | ●          | ●        | ●            | ●           | ●          | ●            | ●              | ●         |
|   | 4, 5, 6 pole: ≤ 7 pF                          | ●         | -          | ●        | -            | ●           | -          | -            | -              | ●         |
|   | 7 pole: ≤ 9 pF                                | ●         | -          | ●        | -            | -           | -          | -            | -              | ●         |
| Rated Voltage                           | 50 V ac                                       | ●         | ●          | ●        | ●            | ●           | ●          | ●            | ●              | ●         |
| <b>Mechanical</b>                       |   |           |            |          |              |             |            |              |                |           |
| Lifetime > 1'000 cycles                 |   | ●         | ●          | ●        | ●            | ●           | ●          | ●            | ●              | ●         |
| Insertion / withdrawal force ≤ 20 N     |   | ●         | ●          | ●        | ●            | ●           | ●          | ●            | ●              | ●         |
| Cable O.D. range                        | 3.5 - 8.0 mm                                  | ●         | -          | ●        | 5.4 - 6.2 mm | ●           | ●          | ●            | ●              | ●         |
| Max. wire size                          | 3 pole: 2.5 mm <sup>2</sup> / AWG 14          | ●         | AWG 20     | ●        | ●            | ●           | ●          | ●            | ●              | ●         |
|   | 4 pole: 1.5 mm <sup>2</sup> / AWG 16          | ●         | -          | ●        | -            | ●           | -          | -            | -              | ●         |
|   | 5, 6, 7 pole: 1.0 mm <sup>2</sup> / AWG 18    | ●         | -          | ●        | -            | ●           | -          | -            | -              | ●         |
| Crimp tool:                             | 6.5 mm Hex die (size "E" acc. to IEC 60803)   | -         | -          | -        | ●            | -           | -          | -            | -              | -         |
| <b>Material</b>                         |   |           |            |          |              |             |            |              |                |           |
| Shell                                   | Zinc diecast (ZnAl4Cu1)                       | ●         | ●          | ●        | ●            | -           | ●          | ●            | ●              | ●         |
|   | (gal Ni or black Cr)                          | ●         | gal Ni     | ●        | ●            | black Cr    | ●          | ●            | ●              | ●         |
|   | Stainless steel                               | -         | -          | -        | -            | -           | -          | -            | -              | -         |
| Insert                                  | Polyamide PA 6.6 30% GR                       | ●         | ●          | ●        | ●            | ●           | ●          | ●            | ●              | ●         |
| Contacts                                | - female 3 pole: Bronze (CuSn8)               | ●         | ●          | ●        | ●            | ●           | ●          | ●            | ●              | ●         |
|   | - female 4 - 7 pole & male: Brass (CuZn39Pb3) | ●         | -          | ●        | ●            | ●           | -          | ●            | -              | ●         |
| Contact surface                         | Silver gal 2 μm Ag                            | ●         | Au         | ●        | ●            | Au          | ●          | ●            | ●              | ●         |
|   | or Gold gal 0.2 μm Au hard alloy over 2 μm Ni | -         | -          | -        | -            | -           | -          | -            | -              | -         |
| Latch lock                              | St3K32 (latch) / Ck 67 (spring)               | -         | -          | ●        | ●            | ●           | ●          | -            | ●              | -         |
| Strain-relief clamp                     | Zinc diecast (ZnAl4Cu1)                       | ●         | ●          | -        | -            | -           | -          | ●            | -              | ●         |
|   | POM   | ●         | ●          | ●        | ●            | ●           | ●          | ●            | ●              | ●         |
| Bushing                                 | PA / PU                                       | ●         | ●          | ●        | ●            | PU          | PU         | ●            | ●              | ●         |
| Circumferential ground spring           | Bronze (CuSn6), Ni plated                     | -         | ●          | -        | ●            | -           | -          | -            | -              | -         |
| Crimp ferrule                           | Brass (CuZn39Pb3), Ni plated                  | -         | -          | -        | ●            | -           | -          | -            | -              | -         |
| Coding ring                             | Polyamide PA 6 15% GR                         | -         | -          | -        | ●            | -           | -          | -            | -              | -         |
| Sealing jacket                          | EPDM  | -         | -          | -        | -            | ●           | -          | -            | -              | -         |
| Securing ring                           | Brass (CuZn39Pb3)                             | -         | -          | -        | -            | -           | -          | -            | ●              | -         |
| <b>Environmental</b>                    |   |           |            |          |              |             |            |              |                |           |
| Operating temperature                   | -30°C to +80°C                                | ●         | ●          | ●        | ●            | ●           | ●          | ●            | ●              | ●         |
| Flammability                            | UL 94 HB                                      | ●         | ●          | ●        | ●            | ●           | ●          | ●            | ●              | ●         |
| Protection class                        | IP 40   | ●         | ●          | ●        | ●            | IP 65       | ●          | ●            | ●              | ●         |
| Solderability complies with IEC 68-2-20 |   | ●         | ●          | ●        | ●            | ●           | ●          | ●            | ●              | ●         |
| Manufacturing Standard IEC 61076-2-103  |   | ●         | ●          | ●        | ●            | ●           | ●          | ●            | ●              | ●         |

- Quality Design



# Ordering Information

## Ordering Information for Cable Connectors

| Female                   | Male                     | Shell             | Contact - plating | 3 pole | 4 pole | 5 pole | 6 pole | 7 pole |
|--------------------------|--------------------------|-------------------|-------------------|--------|--------|--------|--------|--------|
| <b>XX Series</b>         |                          |                   |                   |        |        |        |        |        |
| NC*FXX                   | NC*MXX                   | Nickel            | Silver            | ●      | ●      | ●      | ●      | ●      |
| NC*FXX-B                 | NC*MXX-B                 | Black Cr          | Gold              | ●      | ●      | ●      | ●      | ●      |
| NC*FXX-BAG               | NC*MXX-BAG               | Black Cr          | Silver            | ●      | ●      | ●      | ●      | ●      |
| NC3FXX-**-D <sup>1</sup> | NC3MXX-**-D <sup>1</sup> | Nickel / Black Cr | Silver / Gold     | ●      | -      | -      | -      | -      |
| <b>XX-EMC Series</b>     |                          |                   |                   |        |        |        |        |        |
| NC3FXX-EMC               | NC3MXX-EMC               | Nickel            | Gold              | ●      | -      | -      | -      | -      |
| NC3FXX-EMC-B             | -                        | Black Cr          | Gold              | ●      | -      | -      | -      | -      |
| <b>X Series</b>          |                          |                   |                   |        |        |        |        |        |
| NC*FX                    | NC*MX                    | Nickel            | Silver            | ●      | ●      | ●      | ●      | ●      |
| NC*FX-B                  | NC*MX-B                  | Black Cr          | Gold              | ●      | ●      | ●      | ●      | ●      |
| NC*FX-BAG                | NC*MX-BAG                | Black Cr          | Silver            | ●      | ●      | ●      | ●      | ●      |
| NC3FX-**-D <sup>1</sup>  | NC3MX-**-D <sup>1</sup>  | Nickel / Black Cr | Silver / Gold     | ●      | -      | -      | -      | -      |
| NC6FSX <sup>2</sup>      | NC6MSX <sup>2</sup>      | Nickel            | Silver            | -      | -      | -      | ●      | -      |
| NC6FSX-B <sup>2</sup>    | NC6MSX-B <sup>2</sup>    | Black Cr          | Gold              | -      | -      | -      | ●      | -      |
| NC6FSX-BAG <sup>2</sup>  | NC6MSX-BAG <sup>2</sup>  | Black Cr          | Silver            | -      | -      | -      | ●      | -      |
| <b>RX Series</b>         |                          |                   |                   |        |        |        |        |        |
| NC*FRX                   | NC*MRX                   | Nickel            | Silver            | ●      | ●      | ●      | ●      | ●      |
| NC*FRX-B                 | NC*MRX-B                 | Black Cr          | Gold              | ●      | ●      | ●      | ●      | ●      |
| NC*FRX-BAG               | NC*MRX-BAG               | Black Cr          | Silver            | ●      | ●      | ●      | ●      | ●      |
| <b>XX-HE Series</b>      |                          |                   |                   |        |        |        |        |        |
| NC3FXX-HE                | NC3MXX-HE                | Velour Chromium   | Gold              | ●      | -      | -      | -      | -      |
| <b>FXS Series</b>        |                          |                   |                   |        |        |        |        |        |
| NC3FXS                   | -                        | Nickel            | Gold              | ●      | -      | -      | -      | -      |
| NC3FXS-B                 | -                        | Black Cr          | Gold              | ●      | -      | -      | -      | -      |
| <b>FX-SPEC Series</b>    |                          |                   |                   |        |        |        |        |        |
| NC3FX-SPEC               | -                        | Black Cr          | Silver            | ●      | -      | -      | -      | -      |
| <b>XCC Series</b>        |                          |                   |                   |        |        |        |        |        |
| NC3FXCC                  | NC3MXCC                  | Nickel            | Gold              | ●      | -      | -      | -      | -      |
| <b>X-HD Series</b>       |                          |                   |                   |        |        |        |        |        |
| NC*FX-HD                 | NC*MX-HD                 | Nickel            | Gold              | ●      | ●      | ●      | -      | -      |
| NC3FX-HD-B               | NC3MX-HD-B               | Metal Black       | Gold              | ●      | -      | -      | -      | -      |

### Accessories and Assembly Tools

Detailed information on page 21 and 26.

\* ..... Number of Contacts

\*\* ..... Nickel or Black

-D<sup>1</sup> ..... Bulk packed, to be ordered in multiples of 100 pcs.

<sup>2</sup> ..... Switchcraft Equivalent

Look for the Logo



# XLR Chassis Connectors



## A Series

## AA Series



NC3FAH1



NC3MAHR



NC3FAAV2



NC3MAAH-1

- Smallest XLR receptacles, highest packing density
- Plastic housing, steel retention lug
- Fork type female contacts
- Polished contact areas and hard gold plating
- Various grounding options

- Front panel cutout and PCB layout 100% compatible to the A Series
- Most cost-effective series
- "Tulip" type female contact design with high contact pressure
- Selective gold plated contact and PCB termination area for best conductivity and solderability
- Plastic housing flammability UL 94 HB



### Grounding Options (A / AA / B / BA Series):

- 1 ... Pin 1 & Panel & Shell connected, no separate ground contact
- 2 ... Separate ground contact connected to shell & panel, separate Pin 1 w/o number: No ground / Shell contact (except 4 / 5 pole)

t o i d e n t i f y t h e o r i g i n a l

# XLR Chassis Connectors



## B Series

## BA Series



NC3FBV



NC3MBV

**NEW**



NC3FBAV2



NC3MBAH

- Same as A Series with exception of a metal mounting flange enabling continuous circumferential ground contact to chassis for best EMC and RF protection
- Fastening with B-screw

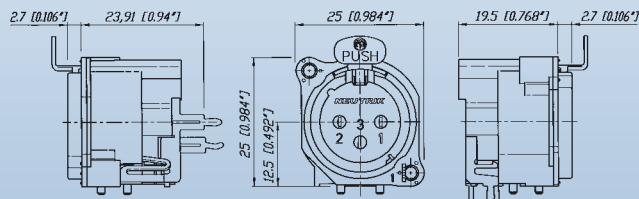
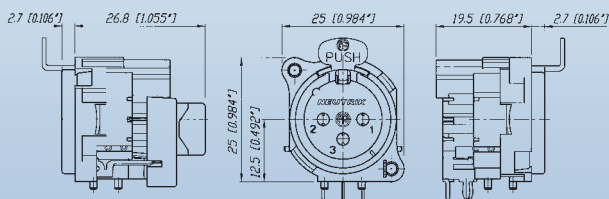
- More economical version of B Series with modified metal flange
- Fastening with A-screw
- 3, 4 and 5 pole version

NC3FBY

NC3FBH1

NC3FBAV

NC3FBAH

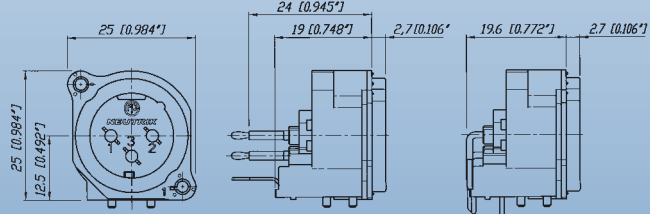
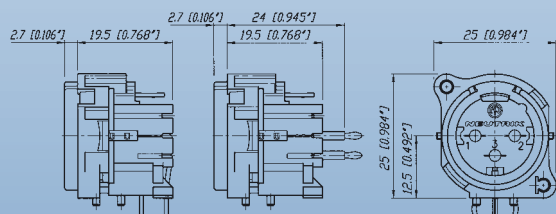


NC3MBH

NC3MBV

NC3MBAV

NC3MBAH



Quality Thinking

# XLR Chassis Connectors



## A/B Series 5-pole switch

## D Series



NC5FAV-SW



NC5MAV-SW



NC3FD-V



NC3MDM3-V

- A and B Series 5 pole connector with additional switch
- Normally open, normally closed (NO - NC) contact
- Switch activated by mating XLR cable connector
- Available in 5 pole, 3 or 4 pole on request

Inserting (Schematic):



- "D" Shape metal shell
- Optimal RF protection using 3 shield contacts
- Horizontal and vertical PCB mount with separate ground contact
- Mounting holes with M3 threads available
- 2 piece connector, insert is removable from shell
- Front locked / unlocked insert
- Special version with screw termination

NC5FAV-SW



NC5MBV-SW



NC3FD-V / NC3FD-H



NC3MD-V / NC3MD-H



- Quality Design

# XLR Chassis Connectors



## DL Series

## DLX Series



NC3FD-L-1



NC4MDM3-H

**NEW**



NC3FD-LX

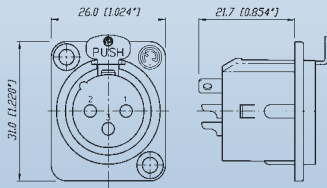


NC3MD-LX

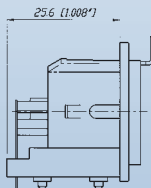
- Unified "D" metal shell
- Solder cups on 3 - 7 pole version
- Additional PCB mount on 4 and 5 pole
- Front and rear mountable
- High End "-HE" version available with machined female contacts, temperature resistant insulator and valuable velour chromium plating

- Next generation of the popular DL Series with greater functionality
- All metal housing works in combination with a new duplex ground contact yielding the best RF protection and ground conductivity in a chassis mount XLR
- Male connector's retention bar replaces plastic design with all metal version
- Unique cage type female contacts on 3 pole version for increased conductivity
- Machined male and female contacts on four to seven pin versions
- D-style housing provides installation compatibility with industry standard D mounting dimensions

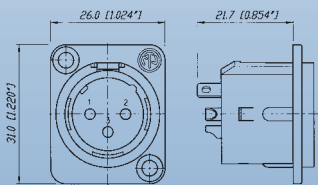
NC3FD-L-1



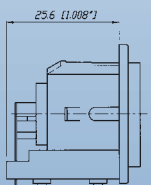
NC\*FDM3-H



NC3MD-L-1

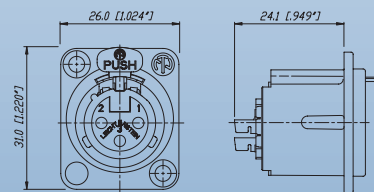


NC\*MDM3-H

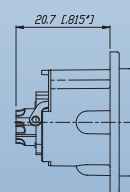


\* ... 3 - 5 contacts

NC3FD-LX



NC\*MD-LX



\* ... 3 - 7 contacts

Quality Thinking

# XLR Chassis Connectors



## EMC

## MPR-HD Series

**NEW**

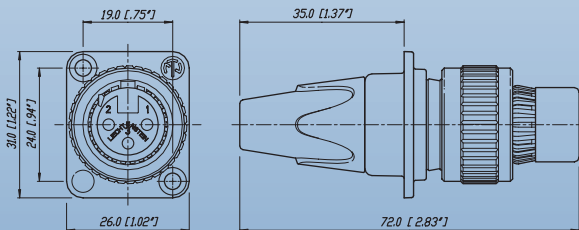


NC3FDX-EMC-SPEC

- 3-pole female XLR chassis connector with integrated capacitive shield to shell connection to avoid RF-interference and LF-noise
- 360° shield contact on female connector ensures best possible shielding and chassis contact
- D flange chassis for panel mount applications
- Includes the locking nut of the NC3FX-SPEC for secure fastening of a gooseneck for instance
- Special flange for large openings available
- Patent pending

Detailed information of RF-shielding see page 9 - EMC cable-connector.

NC3FDX-EMC-SPEC



**NEW**



NC3MPR-HD



NC5MPR-HD

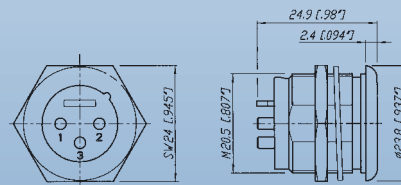
- IP 65 - in combination with NC\*FX-HD cable connectors
- Perfect for outdoor applications
- Sealing gasket for water tight panel mount
- Gold plated contacts



NC5MPR-HD

NC5FX-HD

NC3MPR-HD



\* ... 3 - 5 contacts

- Quality Design

# XLR Chassis Connectors



## P Series

## Combo Series



NC4FP-1



NC6MP-B



NCJ9FI-V

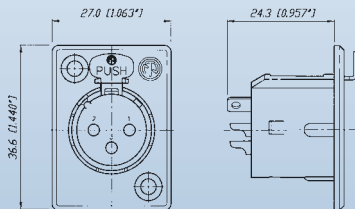


NCJ10FI-S

- Smallest available hard wiring receptacles with large solder cups
- Short female receptacle
- Compatible with Switchcraft DxM, Dx F; Cannon XLRx31, XLRx32
- 6 pole version available with Switchcraft contact arrangement (NC6FSP-1, NC6MSP)

- Combined XLR receptacle and 1/4" phone jack
- Attractive "front end" design
- Saves rack space by combining 2 connectors in one housing
- Horizontal or vertical PCB mounting or hard wire soldering
- Fully normalised
- Stereo or mono version
- Very low conductor capacitance, therefore suitable for digital audio
- Fastening: Self-tapping Plastite® screws with thread 2.9 x 1.06 and tri-rondular configuration (A screw)
- Front dimension: 30 x 27 mm

NC3FP-1



NC3MP



NCJ10FI-H



Quality Thinking

# Accessories

## Colour Coded Accessories

| Part No.                      | Description   | Black | Brown | Red | Orange | Yellow | Green | Blue | Violet | Grey | White |
|-------------------------------|---|-------|-------|-----|--------|--------|-------|------|--------|------|-------|
|                               |   | 0     | 1     | 2   | 3      | 4      | 5     | 6    | 7      | 8    | 9     |
| <b>XLR Cable Connectors</b>   |   |       |       |     |        |        |       |      |        |      |       |
| BSX-*                         | Coloured bushing for X Series                                     |       |       |     |        |        |       |      |        |      |       |
| BXX-*                         | Coloured bushing for XX Series                                    |       |       |     |        |        |       |      |        |      |       |
| XCR-*                         | Coloured coding ring for X Series                                 |       |       |     |        |        |       |      |        |      |       |
| XXR-*                         | Coloured coding ring for XX Series                                |       |       |     |        |        |       |      |        |      |       |
| <b>XLR Chassis Connectors</b> |   |       |       |     |        |        |       |      |        |      |       |
| ACRF-*                        | Coloured ring for female 4 + 5 pole A Series and 3 pole BA Series |       |       |     |        |        |       |      |        |      |       |
| ACRM-*                        | Coloured ring for male 4 + 5 pole A Series and 3 pole BA Series   |       |       |     |        |        |       |      |        |      |       |
| DSS-*                         | Lettering plate for D Series                                      |       |       |     |        |        |       |      |        |      |       |

## Accessories

|                               |  |  |  |                      |
|-------------------------------|--|--|--|----------------------|
| <b>XLR Cable Connectors</b>   |  |  |  |                      |
| XXCR                          | Translucent coding ring for XX Series  |  |  | Example              |
| XCCR                          | Coding ring for X Series digital signals   |  |  |                      |
| <b>XLR Chassis Connectors</b> |  |  |  |                      |
| DBA                           | Dummy-plate for D Series panel cut outs  |  |  |                      |
| SCD*                          | Rubber sealing cover for female and male D Series                                  |  |  | SCDF      SCDM       |
| SC*                           | Rubber sealing cap for female and male XLR receptacles                             |  |  | SCF      SCM         |
| SFAV                          | Rubber frame for A / B Series to mount between front plate and rear vertical print |  |  | SFAV      Example    |
| A-Screw-1-8                   | Plastite® screw 2.9 x 8**  |  |  | A Screw      B Screw |
| B-Screw-1-8                   | TAPTITE® screw 2.5 x 8*  |  |  |                      |

\*\* ... Minimum order quantity of 1000 pcs.

- Quality Design



# Technical Data

| Specification   |  | A Series | AA Series | B Series | BA Series | D Series | DL/DLX Series | MPR-HD Series | P Series    | Combo Series |
|---|--|----------|-----------|----------|-----------|----------|---------------|---------------|-------------|--------------|
| <b>Electrical</b>   |  |          |           |          |           |          |               |               |             |              |
| Number of contacts  |  | 3 - 5    | 3         | 3 - 5    | 3         | 3        | 3 - 7         | 3 - 5         | 3 - 7 (6**) | 5 - 10       |
| Contact resistance  | ≤ 5 mΩ   | ●        | ● ≤ 8 mΩ  | ●        | ●         | ●        | ●             | ●             | ●           | ● ≤ 10 mΩ    |
| Insulation resistance   | - initial: > 2 GΩ                                    | ●        | ●         | ●        | ●         | ●        | ●             | ●             | ●           | ●            |
|   | - after damp heat test: > 1 GΩ                       | ●        | ●         | ●        | ●         | ●        | ●             | ●             | ●           | ● > 500 MΩ   |
| Dielectric strength   | 1500 V dc  | ●        | ●         | ●        | ●         | ●        | ●             | ●             | ●           | ●            |
| Rated voltage   | 50 V ac  | ●        | ●         | ●        | ●         | ●        | ●             | ●             | ●           | ●            |
| Rated current per contact   |  |          |           |          |           |          |               |               |             |              |
|   | 3 pole: 6 A  | ●        | ●         | ●        | ●         | ●        | 16 A          | 16 A          | 16 A        | -            |
|   | 4 pole: 6 A  | ●        | -         | ●        | -         | -        | 10 A          | 10 A          | 10 A        | -            |
|   | 5, 6 pole: 3 A                                       | ●        | -         | ●        | -         | -        | 7.5 A         | 7.5 A         | 7.5 A       | -            |
|   | 7 pole: 5 A  | -        | -         | -        | -         | -        | ●             | -             | ●           | -            |
| Combo XLR + Jack contact  | 7.5 A  | -        | -         | -        | -         | -        | -             | -             | -           | ●            |
| Capacitance between contacts  |  |          |           |          |           |          |               |               |             |              |
|   | 3 pole: ≤ 7 pF                                       | ●        | ●         | ●        | ●         | -        | ≤ 4 pF        | ≤ 4 pF        | ≤ 4 pF      | ≤ 2 pF       |
|   | 4, 5, 6 pole: ≤ 7 pF                                 | ●        | -         | ●        | -         | -        | ●             | ●             | ●           | -            |
|   | 7 pole: ≤ 9 pF                                       | -        | -         | -        | -         | -        | ●             | -             | ●           | -            |
| <b>Mechanical</b>   |  |          |           |          |           |          |               |               |             |              |
| Lifetime > 1'000 mating cycles  |  | ●        | ●         | ●        | ●         | ●        | ●             | ●             | ●           | ●            |
| Insertion / withdrawal force  | ≤ 20 N   | ●        | ●         | ●        | ●         | ●        | ●             | ●             | ●           | ● 25 N       |
| Retention method  |  |          |           |          |           |          |               |               |             |              |
|   | - standard: latch lock                               | ●        | ●         | ●        | ●         | ●        | ●             | ●             | ●           | ● (XLR)      |
|   | - "0" Version: ≥ 20 N separating force               | ●        | ●         | ●        | ●         | ●        | ●             | ●             | ●           | ● 25 N       |
| <b>Material</b>   |  |          |           |          |           |          |               |               |             |              |
| Insert  | Polyamide PA 6.6 30% GR                              | ●        | ●         | ●        | ●         | ●        | ●             | ●             | ●           | ●            |
| Shell   | Zinc diecast ZnAl4Cu1                                | -        | -         | -        | -         | ●        | ●             | ●             | ●           | -            |
|   | (gal Ni or black Cr plated)                          | -        | -         | -        | -         | ●        | ●             | Ni plated     | ●           | -            |
| Ring  | Zinc diecast ZnAl4Cu1                                | -        | -         | ●        | ●         | -        | -             | -             | -           | -            |
| Contacts  | - female 3 pole: Bronze CuSn6                        | ●        | ●         | ●        | ●         | ●        | ●             | -             | ●           | ●            |
|   | 4 - 5 pole: Bronze CuSn6                             | ●        | -         | ●        | -         | -        | -             | -             | -           | -            |
|   | 4 - 7 pole: Brass CuZn39Pb3                          | -        | -         | -        | -         | -        | ●             | -             | ●           | -            |
|   | - male: Brass CuZn35Pb2                              | ●        | ●         | ●        | ●         | ●        | ●             | ●             | ●           | -            |
| Contact surface   | gal 0.2 µm AuCo over 2 µm NiP15 (Tribor®)            | ●        | ●         | ●        | ●         | -        | -             | -             | -           | ●            |
|   | gal 2 µm Ag or gal 0.2 µm Au hard alloy over 2 µm Ni | -        | -         | -        | -         | ●        | ●             | Au            | ●           | -            |
| Latch lock & spring   | Ck 67 steel, treated                                 | ●        | ●         | ●        | ●         | ●        | ●             | -             | ●           | ●            |
| <b>Environmental</b>  |  |          |           |          |           |          |               |               |             |              |
| Operating temperature   | -30°C to +80°C                                       | ●        | ●         | ●        | ●         | ●        | ●             | ●             | ●           | ●            |
| Protection class  | IP 40  | ●        | ●         | ●        | ●         | ●        | ●             | IP 65         | ●           | ●            |
| Flammability  | UL 94 HB   | ●        | ●         | ●        | ●         | ●        | ●             | ●             | ●           | ●            |
|   | UL 94 V-0  | 3 pole   | -         | 3 pole   | -         | -        | -             | -             | -           | -            |
| Solderability complies with IEC 68-2-20                                     |  | ●        | ●         | ●        | ●         | ●        | ●             | ●             | ●           | ●            |
| Mounting screw  |  | A        | A         | 1)       | A         | -        | -             | -             | -           | A            |
| Colour coding   |  | ACR-*    | -         | -        | ACR-*     | DSS      | DSS           | -             | -           | -            |
|   | (4 + 5 pole only)                                    |          |           |          |           |          |               |               |             |              |
| 1) .... B Series 3 pole connectors > B-screw, 4 & 5 pole versions > A-screw |  |          |           |          |           |          |               |               |             |              |
| ** .... P Series male 3 - 6 pole  |  |          |           |          |           |          |               |               |             |              |

Quality Thinking

# Ordering Information

## Ordering Information for Receptacles

| Female          | Male      | Shell         | Contact | 3 pole | 4 pole | 5 pole | Female           | Male      | Shell         | Contact | 3 pole |
|-----------------|-----------|---------------|---------|--------|--------|--------|------------------|-----------|---------------|---------|--------|
| <b>A Series</b> |           |               |         |        |        |        | <b>AA Series</b> |           |               |         |        |
| NC*FAH-D        |           | Black Plastic | Gold    | -      | ●      | ●      | NC3FAAH          | NC3MAAH   | Black Plastic | Gold    | ●      |
|                 | NC*MAH    | Black Plastic | Gold    | ●      | ●      | ●      | NC3FAAH-0        |           | Black Plastic | Gold    | ●      |
| NC*FAH-0        |           | Black Plastic | Gold    | ●      | ●      | ●      | NC3FAAH1         | NC3MAAH-1 | Black Plastic | Gold    | ●      |
|                 | NC3MAH-0  | Black Plastic | Gold    | ●      | -      | -      | NC3FAAH1-0       |           | Black Plastic | Gold    | ●      |
| NC3FAHL-0       |           | Black Plastic | Gold    | ●      | -      | -      |                  | NC3MAAH-0 | Black Plastic | Gold    | ●      |
| NC3FAHR-0       |           | Black Plastic | Gold    | ●      | -      | -      | NC3FAAH2         |           | Black Plastic | Gold    | ●      |
| NC3FAH1-D       | NC3MAH-1  | Black Plastic | Gold    | ●      | -      | -      | NC3AAH2-0        |           | Black Plastic | Gold    | ●      |
| NC3FAH1-0       |           | Black Plastic | Gold    | ●      | -      | -      | NC3FAAV          | NC3MAAV   | Black Plastic | Gold    | ●      |
| NC3FAHL1-D      |           | Black Plastic | Gold    | ●      | -      | -      | NC3FAAV-0        |           | Black Plastic | Gold    | ●      |
|                 | NC3MAHL   | Black Plastic | Gold    | ●      | -      | -      | NC3FAAV1         | NC3MAAV-1 | Black Plastic | Gold    | ●      |
| NC3FAHL1-0      |           | Black Plastic | Gold    | ●      | -      | -      | NC3AAV1-0        |           | Black Plastic | Gold    | ●      |
| NC3FAHR1-D      |           | Black Plastic | Gold    | ●      | -      | -      |                  | NC3MAAV-0 | Black Plastic | Gold    | ●      |
|                 | NC3MAHR   | Black Plastic | Gold    | ●      | -      | -      | NC3FAAV2         |           | Black Plastic | Gold    | ●      |
| NC3FAHR1-0      |           | Black Plastic | Gold    | ●      | -      | -      | NC3FAAV2-0       |           | Black Plastic | Gold    | ●      |
| NC3FAH2-D       |           | Black Plastic | Gold    | ●      | -      | -      |                  |           |               |         |        |
| NC3FAH2-0       |           | Black Plastic | Gold    | ●      | -      | -      |                  |           |               |         |        |
| NC3FAHR2-D      |           | Black Plastic | Gold    | ●      | -      | -      |                  |           |               |         |        |
| NC3FAHR2-0      |           | Black Plastic | Gold    | ●      | -      | -      |                  |           |               |         |        |
| NC*FAV-D        |           | Black Plastic | Gold    | -      | ●      | ●      |                  |           |               |         |        |
|                 | NC*MAV    | Black Plastic | Gold    | ●      | ●      | ●      |                  |           |               |         |        |
| NC*FAV-0        |           | Black Plastic | Gold    | ●      | ●      | ●      |                  |           |               |         |        |
|                 | NC3MAV-0  | Black Plastic | Gold    | ●      | -      | -      |                  |           |               |         |        |
| NC3FAV1-D       | NC3MAV-1  | Black Plastic | Gold    | ●      | -      | -      |                  |           |               |         |        |
| NC3FAV1-0       |           | Black Plastic | Gold    | ●      | -      | -      |                  |           |               |         |        |
| NC3FAV2-D       |           | Black Plastic | Gold    | ●      | -      | -      |                  |           |               |         |        |
| NC3FAV2-0       |           | Black Plastic | Gold    | ●      | -      | -      |                  |           |               |         |        |
| NC3FAY-D        | NC3MAY    | Black Plastic | Gold    | ●      | -      | -      |                  |           |               |         |        |
| NC3FAY-0        |           | Black Plastic | Gold    | ●      | -      | -      |                  |           |               |         |        |
| NC5FAV-SW-D     | NC5MAV-SW | Black Plastic | Gold    | -      | -      | ●      |                  |           |               |         |        |

A Series comes with Push Latch disassembled, assembled Push on request.  
AA Series comes with Push Latch assembled.

A / AA Series rear mount only, all PCB mount except Y version = IDC

## Grounding Options

### A / AA Series and B / BA Series

#### Female

"1"



"2"



#### Male

w/o number



"0"



"1"



Shell\* ... Contact to shell of mating connector

Frontpanel\* ... Connection to frontpanel by fastening screw

- Quality Design

# Ordering Information

## Ordering Information for Receptacles

| Female  | Male      | Flange      | Contact | 3 pole | 4 pole | 5 pole | Female   | Male      | Flange | Contact | 3 pole | 4 pole | 5 pole |
|---|-----------|-------------|---------|--------|--------|--------|--|-----------|--------|---------|--------|--------|--------|
| <b>B Series</b>   |           |             |         |        |        |        | <b>BA Series</b>   |           |        |         |        |        |        |
| NC*FBH-D  |           | Metal       | Gold    | -      | ●      | ●      | NC3FBAH1-D   |           | Metal  | Gold    | ●      | -      | -      |
|   | NC*MBH    | Metal       | Gold    | ●      | ●      | ●      |  | NC3MBAH   | Metal  | Gold    | ●      | -      | -      |
| NC*FBH-B-D  |           | Black Metal | Gold    | -      | ●      | ●      | NC3FBAH1-0   |           | Metal  | Gold    | ●      | -      | -      |
|   | NC*MBH-B  | Black Metal | Gold    | ●      | -      | ●      |  | NC3MBAH-0 | Metal  | Gold    | ●      | -      | -      |
| NC3FBH1-D   |           | Metal       | Gold    | ●      | -      | -      | NC3FBAH2-D   |           | Metal  | Gold    | ●      | -      | -      |
| NC3FBH1-B-D   |           | Black Metal | Gold    | ●      | -      | -      |  | NC3MBAH-1 | Metal  | Gold    | ●      | -      | -      |
| NC3FBHL1-D  |           | Metal       | Gold    | ●      | -      | -      | NC3FBAH2-0   |           | Metal  | Gold    | ●      | -      | -      |
|   | NC3MBHL   | Metal       | Gold    | ●      | -      | -      | NC3FBAV1-D   |           | Metal  | Gold    | ●      | -      | -      |
| NC3FBHR1-D  |           | Metal       | Gold    | ●      | -      | -      |  | NC3MBAV   | Metal  | Gold    | ●      | -      | -      |
| NC3FBH2-D   |           | Metal       | Gold    | ●      | -      | -      | NC3FBAV1-0   |           | Metal  | Gold    | ●      | -      | -      |
| NC3FBH2-B-D   |           | Black Metal | Gold    | ●      | -      | -      |  | NC3MBAV-0 | Metal  | Gold    | ●      | -      | -      |
| NC3FBHR2-D  |           | Metal       | Gold    | ●      | -      | -      | NC3FBAV2-D   |           | Metal  | Gold    | ●      | -      | -      |
|   | NC3MBHR   | Metal       | Gold    | ●      | -      | -      |  | NC3MBAV-1 | Metal  | Gold    | ●      | -      | -      |
| NC*FBV-D  |           | Metal       | Gold    | -      | ●      | ●      | NC3FBAV2-0   |           | Metal  | Gold    | ●      | -      | -      |
|   | NC*MBV    | Metal       | Gold    | ●      | ●      | ●      |  |           |        |         |        |        |        |
| NC*FBV-B-D  |           | Black Metal | Gold    | -      | ●      | ●      |  |           |        |         |        |        |        |
|   | NC*MBV-B  | Black Metal | Gold    | ●      | -      | ●      |  |           |        |         |        |        |        |
| NC3FBV1-D   |           | Metal       | Gold    | ●      | -      | -      |  |           |        |         |        |        |        |
| NC3FBV1-B-D   |           | Black Metal | Gold    | ●      | -      | -      |  |           |        |         |        |        |        |
| NC3FBV2-D   |           | Metal       | Gold    | ●      | -      | -      |  |           |        |         |        |        |        |
| NC3FBV2-B-D   |           | Black Metal | Gold    | ●      | -      | -      |  |           |        |         |        |        |        |
| NC3FBY-D  | NC3MBY    | Metal       | Gold    | ●      | -      | -      |  |           |        |         |        |        |        |
| NC3FBY-B-D  | NC3MBY-B  | Black Metal | Gold    | ●      | -      | -      |  |           |        |         |        |        |        |
| NC5FBV-SW-D   | NC5MBV-SW | Metal       | Gold    | -      | -      | ●      |  |           |        |         |        |        |        |
| NC3FBH1-E-D   | NC3MBV-E  | Metal       | Gold    | ●      | -      | -      |  |           |        |         |        |        |        |
| NC3FBH2-E-D   |           | Metal       | Gold    | ●      | -      | -      |  |           |        |         |        |        |        |
|   | NC3MBH-E  | Metal       | Gold    | ●      | -      | -      |  |           |        |         |        |        |        |
| Special version for 3 pole B-Series with M2.5 mounting holes (-M25) on request. |           |             |         |        |        |        | B / BA Series comes with Push Latch disassembled, assembled Push on request. |           |        |         |        |        |        |
|   |           |             |         |        |        |        | B / BA Series rear mount only, all PCB mount except Y version = IDC          |           |        |         |        |        |        |

Quality Thinking



# Ordering Information

## Panel Cutouts

A / AA / B / BA Series    D / DL / DLX Series    P Series Female    P Series Male    Combo    MPR Series



## Assembly Tools

HTX    Hand tool to tighten the X / XX-bushing



BTXX    Assembly fixture to tightening the XX-bushing



HX-R-BNC    Crimp tool for XCC Series



DIE-R-BNC-PT    Crimp die for XCC Series (6.5 mm HEX)



Компания «Life Electronics» занимается поставками электронных компонентов импортного и отечественного производства от производителей и со складов крупных дистрибьюторов Европы, Америки и Азии.

С конца 2013 года компания активно расширяет линейку поставок компонентов по направлению коаксиальный кабель, кварцевые генераторы и конденсаторы (керамические, пленочные, электролитические), за счёт заключения дистрибьюторских договоров

Мы предлагаем:

- Конкуренспособные цены и скидки постоянным клиентам.
- Специальные условия для постоянных клиентов.
- Подбор аналогов.
- Поставку компонентов в любых объемах, удовлетворяющих вашим потребностям.
- Приемлемые сроки поставки, возможна ускоренная поставка.
- Доставку товара в любую точку России и стран СНГ.
- Комплексную поставку.
- Работу по проектам и поставку образцов.
- Формирование склада под заказчика.
- Сертификаты соответствия на поставляемую продукцию (по желанию клиента).
- Тестирование поставляемой продукции.
- Поставку компонентов, требующих военную и космическую приемку.
- Входной контроль качества.
- Наличие сертификата ISO.

В составе нашей компании организован Конструкторский отдел, призванный помогать разработчикам, и инженерам.

Конструкторский отдел помогает осуществить:

- Регистрацию проекта у производителя компонентов.
- Техническую поддержку проекта.
- Защиту от снятия компонента с производства.
- Оценку стоимости проекта по компонентам.
- Изготовление тестовой платы монтаж и пусконаладочные работы.



Тел: +7 (812) 336 43 04 (многоканальный)

Email: [org@lifeelectronics.ru](mailto:org@lifeelectronics.ru)