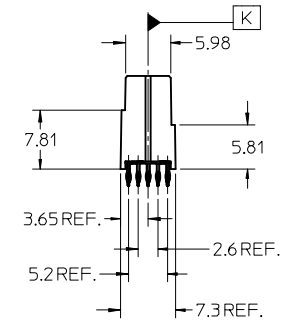
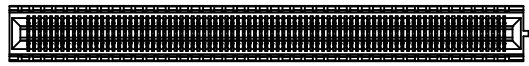


NOTES:

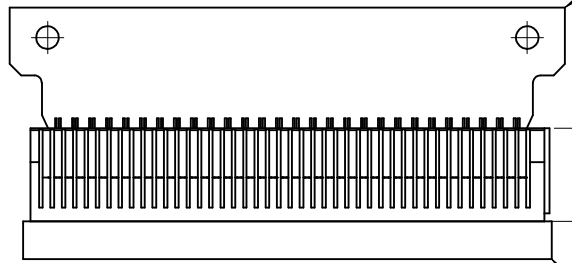
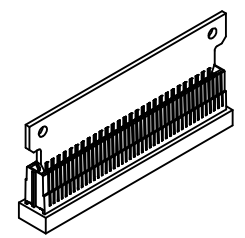
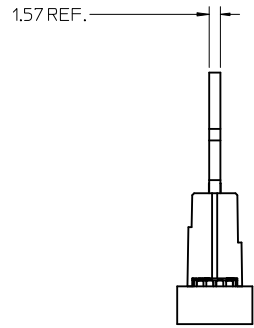
1. MATERIAL:  
HOUSING - GLASS FILLED THERMOPLASTIC, 94-V0, BLACK  
TERMINALS - BRASS
2. FINISH:  
CONTACT AREA: HARD GOLD -0.76μm MIN OVER 3.80μ NICKEL  
COMPLIANT AREA: TIN - 0.76/1.52μm OVERALL NICKEL
3. REFER TO PS-75594-999 PRODUCT SPECIFICATION FOR ALL ELECTRICAL, MECHANICAL AND ENVIROMENTAL SPECIFICATIONS.
4. REFER TO PK-75594-999 FOR ALL PACKAGING SPECIFICATIONS.
5. PROCESSING: PRESSFIT TO PC BOARD.
6. IN ORDER TO PROVIDE OPTIMAL ELECTRICAL PERFORMANCE, THE MATING BOARD MUST MEET REQUIREMENTS OF AMC.0 R2 SPECIFICATION.
7. MATING PC BOARD THICKNESS = 1.60±0.16MM OVER CONTACT PADS.



ADDED PAGE 3 EC NO: UCP2009-2429 DRWN: DROSCA 2009/05/18 CHKD: 2009/05/20 APPR: JCOMERCI 2009/05/20	QUALITY SYMBOLS ▽=0 ▽=0	GENERAL TOLERANCES (UNLESS SPECIFIED)		DIMENSION STYLE MM ONLY		SCALE 2:1	DESIGN UNITS METRIC	THIRD ANGLE PROJECTION		
			mm	INCH	DRAWN BY DROSCA	DATE 04/28/2008	TITLE <b>SALES ASSEMBLY                  EDGE CARD, 75 MM PITCH                  170 CIRCUIT</b>  MOLEX INCORPORATED DOCUMENT NO. SD-75594-001 SHEET NO. 1 OF 3			
		4 PLACES ± ---	± ---	CHECKED BY JCOMERCI	DATE 04/28/2008					
		3 PLACES ± ---	± ---	APPROVED BY JCOMERCI	DATE 04/28/2008					
	± 0.13	± ---	MATERIAL NO. <b>755940000</b>							
	± 0.25	± ---	DRAFT WHERE APPLICABLE MUST REMAIN WITHIN DIMENSIONS							
	ANGULAR ± 1/2°		SIZE C		THIS DRAWING CONTAINS INFORMATION THAT IS PROPRIETARY TO MOLEX INCORPORATED AND SHOULD NOT BE USED WITHOUT WRITTEN PERMISSION					

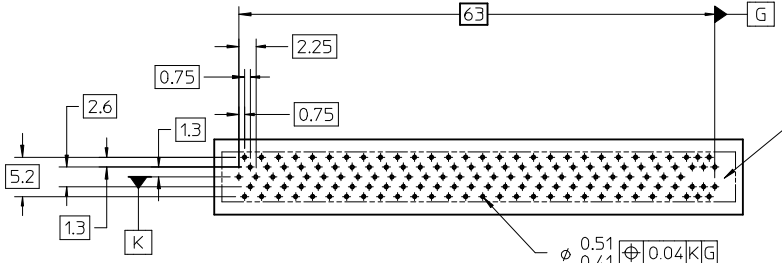


DAUGHTER CARD



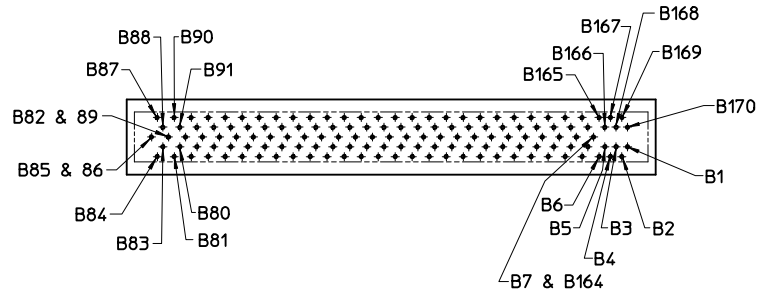
12.31 REF.

P.C. BOARD (BACKPLANE)

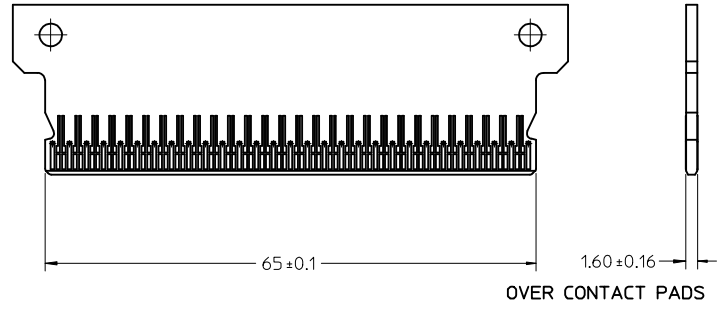


Note:  
The holes located down the center are omitted within the last twelve circuit positions.  
The center to center array remains constant.

$\phi$  0.51  
0.41  $\oplus$  0.04 K/G  
FINISHED PLATED THRU HOLE SIZE  
0.57 MM DRILLED HOLE SIZE  
0.0254-0.0635 ELECTRO DEPOSITED COPPER



MOTHER BOARD HOLE LAYOUT



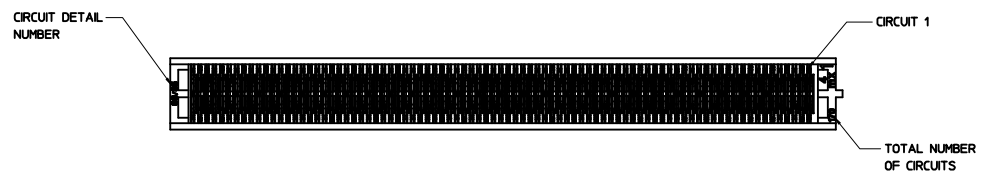
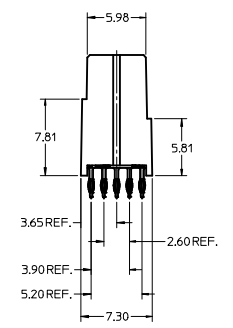
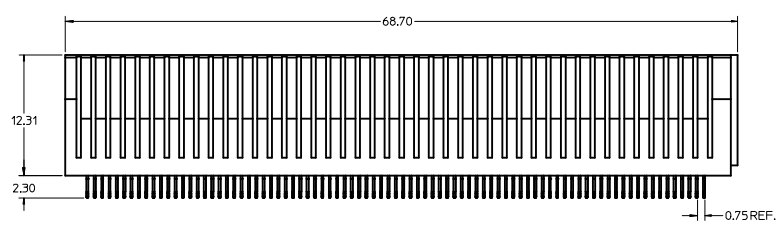
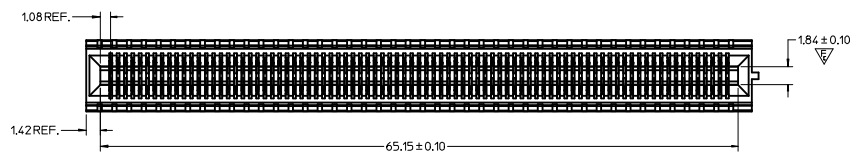
DAUGHTER CARD  
SEE SPECIFICATION AMC.0 R2

SEE SHEET 1 IEC NO: UCP2009-2429 2009/05/18 DRWN: DROSCA 2009/05/20 CHKD: APPR: JCOMERCI 2009/05/20	QUALITY SYMBOLS ▽=0 ▽=0	GENERAL TOLERANCES (UNLESS SPECIFIED)		DIMENSION STYLE <b>MM ONLY</b>		SCALE 1:1	DESIGN UNITS METRIC	THIRD ANGLE PROJECTION		
		4 PLACES	±	---	±	---	DRAWN BY	DATE	SALES ASSEMBLY EDGE CARD, 75 MM PITCH 170 CIRCUIT MOLEX INCORPORATED MOLEX DOCUMENT NO. SD-75594-001 SHEET NO. 2 OF 3	
		3 PLACES	±	---	±	---	CHECKED BY	DATE		
		2 PLACES	±	0.13	±	---	APPROVED BY	DATE		
1 PLACE	±	0.25	±	---	JCOMERCI	04/28/2008				
		ANGULAR		±1/2°		SEE SHEET 1				
DRAFT WHERE APPLICABLE MUST REMAIN WITHIN DIMENSIONS				SIZE C		THIS DRAWING CONTAINS INFORMATION THAT IS PROPRIETARY TO MOLEX INCORPORATED AND SHOULD NOT BE USED WITHOUT WRITTEN PERMISSION				

75594-0000 LEGEND 170 CIRCUITS

COMPONENT SIDE 1					COMPONENT SIDE 2				
PIN NO.	SIGNAL	ALLEGRO PIN NO.			SIGNAL	PIN NO.			
170						1			
169		○	○	○	○	2			
168						3			
167		○	○	○	○	4			
166						5			
165		○	○	○	○	6			
164						7			
163		○	○	○	○	8			
162						9			
161		○	○	○	○	10			
160						11			
159		○	○	○	○	12			
158						13			
157		○	○	○	○	14			
156						15			
155		○	○	○	○	16			
154						17			
153		○	○	○	○	18			
152						19			
151		○	○	○	○	20			
150						21			
149		○	○	○	○	22			
148						23			
147		○	○	○	○	24			
146						25			
145		○	○	○	○	26			
144						27			
143		○	○	○	○	28			
142						29			
141		○	○	○	○	30			
140						31			
139		○	○	○	○	32			
138						33			
137		○	○	○	○	34			
136						35			
135		○	○	○	○	36			
134						37			
133		○	○	○	○	38			
132						39			
131		○	○	○	○	40			
130						41			
129		○	○	○	○	42			
128						43			
127		○	○	○	○	44			
126						45			
125		○	○	○	○	46			
124						47			
123		○	○	○	○	48			
122						49			
121		○	○	○	○	50			
120						51			
119		○	○	○	○	52			
118						53			
117		○	○	○	○	54			
116						55			
115		○	○	○	○	56			
114						57			
113		○	○	○	○	58			
112						59			
111		○	○	○	○	60			
110						61			
109		○	○	○	○	62			
108						63			
107		○	○	○	○	64			
106						65			
105		○	○	○	○	66			
104						67			
103		○	○	○	○	68			
102						69			
101		○	○	○	○	70			
100						71			
99		○	○	○	○	72			
98						73			
97		○	○	○	○	74			
96						75			
95		○	○	○	○	76			
94						77			
93		○	○	○	○	78			
92						79			
91		○	○	○	○	80			
90						81			
89		○	○	○	○	82			
88						83			
87		○	○	○	○	84			
86						85			

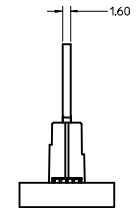
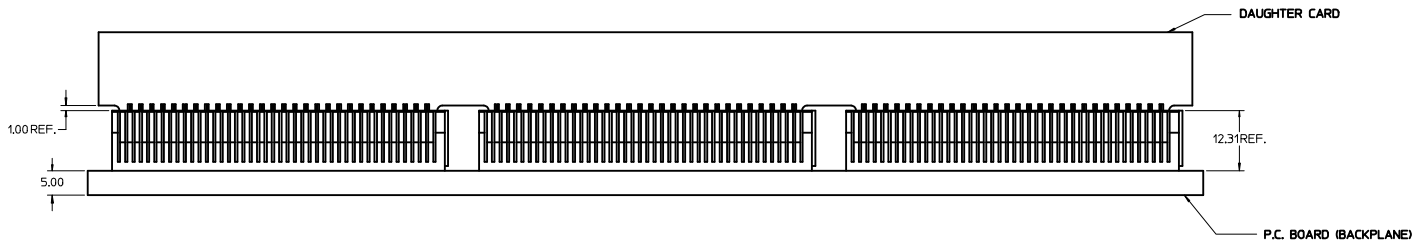
SEE SHEET 1 EC NO: UCP2009-2429 DRW: DROS CHKD: JCOMERCI APPR: JCOMERCI 2009/05/18 2009/05/20 2009/05/20	QUALITY SYMBOLS ▽=0 ▽=0	GENERAL TOLERANCES (UNLESS SPECIFIED) <table border="1"> <tr> <th></th> <th>mm</th> <th>INCH</th> </tr> <tr> <td>4 PLACES</td> <td>± .005</td> <td>± .0002</td> </tr> <tr> <td>3 PLACES</td> <td>± .005</td> <td>± .0002</td> </tr> <tr> <td>2 PLACES</td> <td>± 0.13</td> <td>± .005</td> </tr> <tr> <td>1 PLACE</td> <td>± 0.25</td> <td>± .010</td> </tr> </table> ANGULAR ±1/2°		mm	INCH	4 PLACES	± .005	± .0002	3 PLACES	± .005	± .0002	2 PLACES	± 0.13	± .005	1 PLACE	± 0.25	± .010	DIMENSION STYLE <b>MM ONLY</b> DRAWN BY DATE DROS CA 04/28/2008 CHECKED BY DATE JCOMERCI 04/28/2008 APPROVED BY DATE JCOMERCI 04/28/2008	SCALE <b>1:1</b> DESIGN UNITS METRIC THIRD ANGLE PROJECTION
		mm	INCH																
	4 PLACES	± .005	± .0002																
	3 PLACES	± .005	± .0002																
2 PLACES	± 0.13	± .005																	
1 PLACE	± 0.25	± .010																	
DRAFT WHERE APPLICABLE MUST REMAIN WITHIN DIMENSIONS			TITLE <b>SALES ASSEMBLY                  EDGE CARD, 75 MM PITCH                  170 CIRCUIT</b>																
MATERIAL NO.			MOLEX INCORPORATED																
SEE SHEET 1			DOCUMENT NO. SD-75594-001 SHEET NO. 3 OF 3																



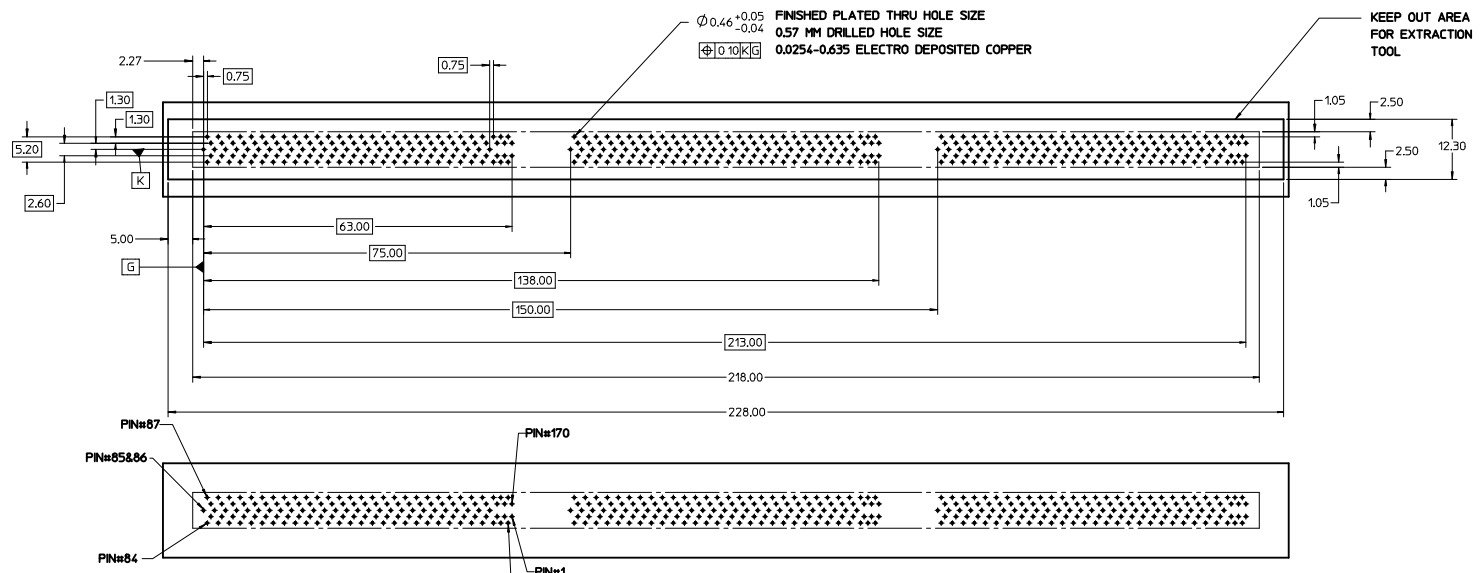
- NOTES:
- MATERIAL:  
HOUSING - GLASS FILLED THERMOPLASTIC, 94-VO, BLACK  
TERMINALS - COPPER ALLOY
  - FINISH:  
TERMINALS - 0.76 MICRONS MINIMUM GOLD IN THE CONTACT AREA AND 0.76 - 152 MICRONS TIN IN PRESSFIT TAIL AREA OVER 1.27 MICRONS MINIMUM NICKEL OVERALL.
  - REFER TO PS-76421-001 PRODUCT SPECIFICATION FOR ALL ELECTRICAL, MECHANICAL AND ENVIRONMENTAL SPECIFICATIONS.
  - REFER TO PK-75594-999 FOR ALL PACKAGING SPECIFICATIONS.
  - PROCESSING: PRESSFIT TO PC BOARD.
  - MATING PC BOARD THICKNESS = 1.60±0.16MM OVER CONTACT PADS.
  - PRODUCT IS ELV AND RoHS COMPLIANT, LEVEL OF COMPLIANCE: 6/6  
ALL BANNED SUBSTANCES ARE REMOVED:  
Pb (LEAD)  
HEXAVALENT CHROMIUM (CrVI)  
CADMIUM  
MERCURY  
POLYBROMINATED BIPHENYL (PBB)  
POLYBROMINATED DIPHENYL ETHER (PBDE)

INITIAL RELEASE EC NO: UCP2009-1091 DRAWN: DROSCA CHKD: JCOMERCI APPR: JCOMERCI REV DESCRIPTION	2008/12/05	2008/12/05	2008/12/09	QUALITY SYMBOLS	GENERAL TOLERANCES (UNLESS SPECIFIED)	DIMENSION STYLE	SCALE	DESIGN UNITS	THIRD ANGLE PROJECTION
				▽ = 0	mm INCH	MM ONLY	4:1	METRIC	
				▽ = 1	4 PLACES ± --- ± --- 3 PLACES ± --- ± --- 2 PLACES ± 0.13 ± --- 1 PLACE ± 0.25 ± ---	DRAWN BY DATE DROSCA 10/27/2008	CHECKED BY DATE JCOMERCI 10/27/2008	TITLE	EDGE LINE 12.5GB 0.062"PCB/0.75MM PITCH 170 CIRCUITS
				▽ = 1	ANGULAR ± 1/2°	APPROVED BY DATE JCOMERCI 10/27/2008	MATERIAL NO. DOCUMENT NO. 755940000 SD-75594-002		MOLEX INCORPORATED
DRAFT WHERE APPLICABLE MUST REMAIN WITHIN DIMENSIONS					SIZE	THIS DRAWING CONTAINS INFORMATION THAT IS PROPRIETARY TO MOLEX INCORPORATED AND SHOULD NOT BE USED WITHOUT WRITTEN PERMISSION			
					D	SHEET NO. 1 OF 5			

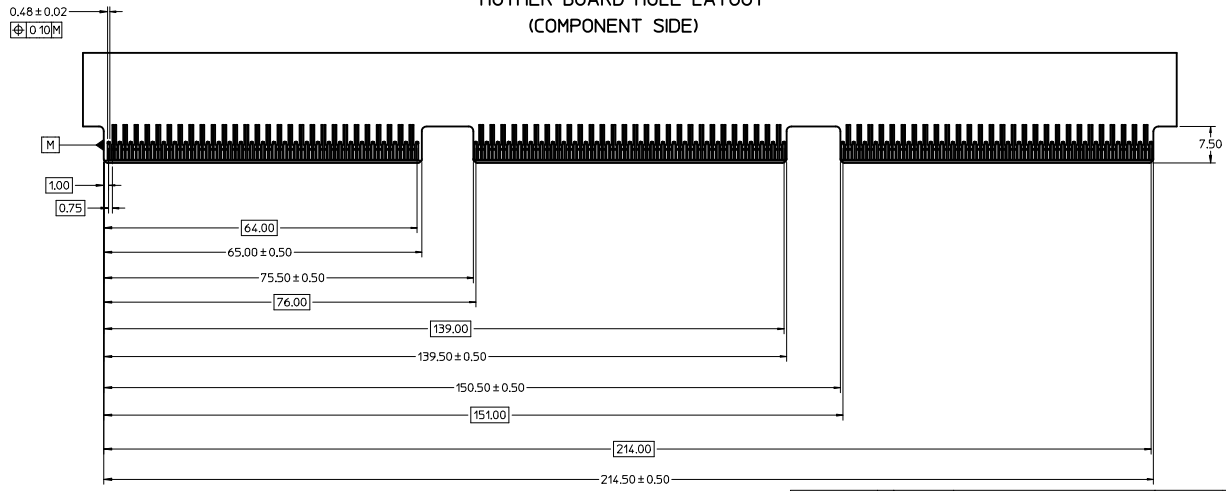
# P.C. BOARD MOUNTING



SEE SHEET 1 IEC NO: UCP2009-1091 UJDRWN: DROSCA 2008/12/05 CHYK: JCOMERCI 2008/12/05 APPR: JCOMERCI 2008/12/09	QUALITY SYMBOLS	DESCRIPTION	GENERAL TOLERANCES (UNLESS SPECIFIED)	DIMENSION STYLE	SCALE	DESIGN UNITS	THIRD ANGLE PROJECTION	
	▽ - 0	4 PLACES	± ---	mm	MM ONLY	2:1	M	
	▽ - 0	3 PLACES	± ---	INCH	DRAWN BY DATE	DATE	TITLE	
	▽ - 0	2 PLACES	± 0.13	± ---	DROSCA 10/27/2008	DATE	EDGE LINE 12.5GB 0.062"PCB/0.75MM PITCH 170 CIRCUITS	
▽ - 0	1 PLACE	± 0.25	± ---	JCOMERCI 10/27/2008	DATE	JCOMERCI 10/27/2008	Molex MOLEX INCORPORATED	
▽ - 0	DRAFT WHERE APPLICABLE MUST REMAIN WITHIN DIMENSIONS		ANGULAR ±1/2°	WATERFALL NO.	DOCUMENT NO.			
				SEE SHEET 1	SD-75594-002			
				SIZE D	THIS DRAWING CONTAINS INFORMATION THAT IS PROPRIETARY TO MOLEX INCORPORATED AND SHOULD NOT BE USED WITHOUT WRITTEN PERMISSION			

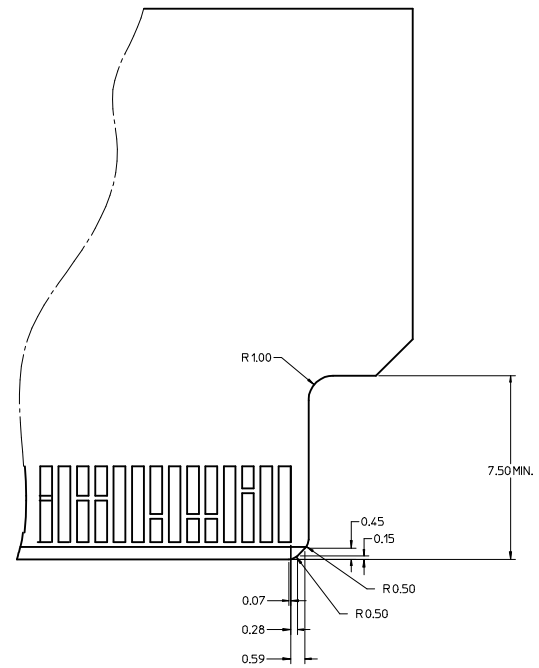
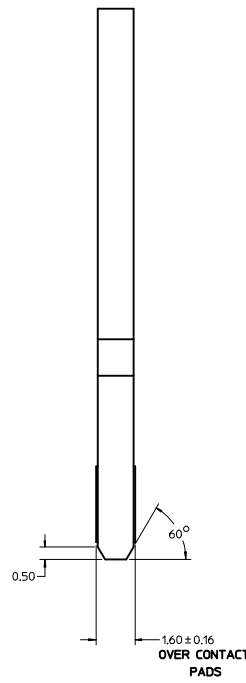
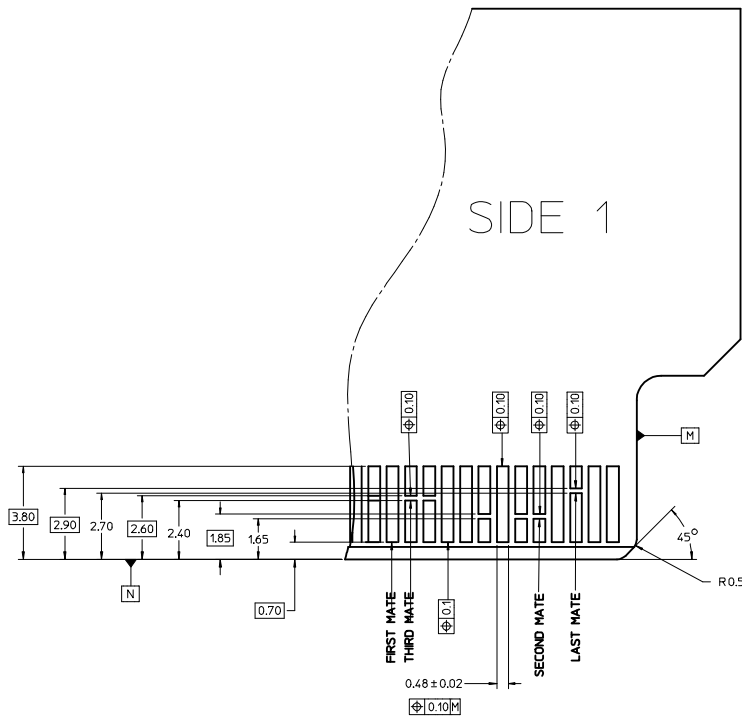


MOTHER BOARD HOLE LAYOUT  
(COMPONENT SIDE)



<b>SEE SHEET 1</b> IEC NO: UCP2009-1091 DRAWN: DROSCA 2008/12/05 CHKD: 2008/12/05 APPR: JCOMERCI 2008/12/09	QUALITY SYMBOLS	GENERAL TOLERANCES (UNLESS SPECIFIED)	DIMENSION STYLE	SCALE	DESIGN UNITS	THIRD ANGLE PROJECTION															
	$\nabla=0$ $\nabla=0$	<table border="1"> <thead> <tr> <th></th> <th>mm</th> <th>INCH</th> </tr> </thead> <tbody> <tr> <td>4 PLACES</td> <td>± 0.13</td> <td>± 0.005</td> </tr> <tr> <td>3 PLACES</td> <td>± 0.25</td> <td>± 0.010</td> </tr> <tr> <td>2 PLACES</td> <td>± 0.38</td> <td>± 0.015</td> </tr> <tr> <td>1 PLACE</td> <td>± 0.51</td> <td>± 0.020</td> </tr> </tbody> </table>		mm	INCH	4 PLACES	± 0.13	± 0.005	3 PLACES	± 0.25	± 0.010	2 PLACES	± 0.38	± 0.015	1 PLACE	± 0.51	± 0.020	MM ONLY	2:1	METRIC	
		mm	INCH																		
	4 PLACES	± 0.13	± 0.005																		
3 PLACES	± 0.25	± 0.010																			
2 PLACES	± 0.38	± 0.015																			
1 PLACE	± 0.51	± 0.020																			
REVISION	DESCRIPTION	<table border="1"> <thead> <tr> <th>NO.</th> <th>DATE</th> <th>BY</th> <th>DESCRIPTION</th> </tr> </thead> <tbody> <tr> <td>1</td> <td>10/27/2008</td> <td>JCOMERCI</td> <td>APPROVED</td> </tr> <tr> <td>2</td> <td>10/27/2008</td> <td>JCOMERCI</td> <td>CHECKED</td> </tr> <tr> <td>3</td> <td>10/27/2008</td> <td>DROSCA</td> <td>DRAWN</td> </tr> </tbody> </table>	NO.	DATE	BY	DESCRIPTION	1	10/27/2008	JCOMERCI	APPROVED	2	10/27/2008	JCOMERCI	CHECKED	3	10/27/2008	DROSCA	DRAWN	DRAWN BY: DROSCA 10/27/2008 CHECKED BY: DATE APPROVED BY: JCOMERCI 10/27/2008	TITLE: EDGE LINE 12.5GB 0.062"PCB/0.75MM PITCH 170 CIRCUITS	MOLEX INCORPORATED
NO.	DATE	BY	DESCRIPTION																		
1	10/27/2008	JCOMERCI	APPROVED																		
2	10/27/2008	JCOMERCI	CHECKED																		
3	10/27/2008	DROSCA	DRAWN																		
MATERIAL NO. <b>SEE SHEET 1</b>	DOCUMENT NO. SD-75594-002	SHEET NO. 3 OF 5	THIS DRAWING CONTAINS INFORMATION THAT IS PROPRIETARY TO MOLEX INCORPORATED AND SHOULD NOT BE USED WITHOUT WRITTEN PERMISSION																		

# MODULE EDGE CARD CONTACT DETAIL



**Note:**

These are generic details that describe the configuration of various PCB design elements. The customer must determine where and when to use each element to accommodate their specific application.

<b>SEE SHEET 1</b> IEC NO: UCF2009-1091 DRAWN BY: DROSCA CHKD: 2008/12/05 APPR: JCOMERCI 2008/12/09	QUALITY SYMBOLS ▽=0 ▽=0	GENERAL TOLERANCES (UNLESS SPECIFIED)		DIMENSION STYLE <b>MM ONLY</b>	SCALE <b>10:1</b>	DESIGN UNITS <b>METRIC</b>	THIRD ANGLE PROJECTION
		4 PLACES ± --- ± --- 3 PLACES ± --- ± --- 2 PLACES ± 0.13 ± --- 1 PLACE ± 0.25 ± --- ANGULAR ± 1/2°	mm INCH	DRAWN BY: DROSCA DATE: 10/27/2008 CHECKED BY: JCOMERCI DATE: 10/27/2008 APPROVED BY: JCOMERCI DATE: 10/27/2008	TITLE <b>EDGE LINE 12.5GB                  0.062"PCB/0.75MM PITCH                  170 CIRCUITS</b>	MATERIAL NO: <b>SEE SHEET 1</b>	DOCUMENT NO: <b>SD-75594-002</b>
DRAFT WHERE APPLICABLE MUST REMAIN WITHIN DIMENSIONS		THIS DRAWING CONTAINS INFORMATION THAT IS PROPRIETARY TO MOLEX INCORPORATED AND SHOULD NOT BE USED WITHOUT WRITTEN PERMISSION					

LEGEND 170 CIRCUITS				
COMPONENT SIDE 1		ALLEGRO PIN NO.	COMPONENT SIDE 2	
PIN NO.	SIGNAL		SIGNAL	PIN NO.
920				1
919				2
918				3
917				4
916				5
915				6
914				7
913				8
912				9
911				10
910				11
909				12
908				13
907				14
906				15
905				16
904				17
903				18
902				19
901				20
900				21
899				22
898				23
897				24
896				25
895				26
894				27
893				28
892				29
891				30
890				31
889				32
888				33
887				34
886				35
885				36
884				37
883				38
882				39
881				40
880				41
879				42
878				43
877				44
876				45
875				46
874				47
873				48
872				49
871				50
870				51
869				52
868				53
867				54
866				55
865				56
864				57
863				58
862				59
861				60
860				61
859				62
858				63
857				64
856				65
855				66
854				67
853				68
852				69
851				70
850				71
849				72
848				73
847				74
846				75
845				76
844				77
843				78
842				79
841				80
840				81
839				82
838				83
837				84
836				85

<b>SEE SHEET 1</b> IEC NO: UCF2009-1091 DRAWN: DROSCA 2008/12/05 CHYK: 2008/12/05 APPR: JCOMERCI 2008/12/09	QUALITY SYMBOLS ▽=0 ▽=0	GENERAL TOLERANCES (UNLESS SPECIFIED) mm INCH 4 PLACES ± --- ± --- 3 PLACES ± --- ± --- 2 PLACES ± 0.13 ± --- 1 PLACE ± 0.25 ± --- ANGULAR ±1/2°	DIMENSION STYLE MM ONLY	SCALE 4:1	DESIGN UNITS METRIC	THIRD ANGLE PROJECTION	
	DRAWN BY DROSCA 10/27/2008	CHECKED BY JCOMERCI 10/27/2008	APPROVED BY JCOMERCI 10/27/2008	MATERIAL NO. SEE SHEET 1	DOCUMENT NO. SD-75594-002	TITLE EDGE LINE 12.5GB 0.062"PCB/0.75MM PITCH 170 CIRCUITS	SHEET NO. 5 OF 5
	DRAFT WHERE APPLICABLE MUST REMAIN WITHIN DIMENSIONS						THIS DRAWING CONTAINS INFORMATION THAT IS PROPRIETARY TO MOLEX INCORPORATED AND SHOULD NOT BE USED WITHOUT WRITTEN PERMISSION
	MOLEX INCORPORATED						MOLEX INCORPORATED



Компания «Life Electronics» занимается поставками электронных компонентов импортного и отечественного производства от производителей и со складов крупных дистрибьюторов Европы, Америки и Азии.

С конца 2013 года компания активно расширяет линейку поставок компонентов по направлению коаксиальный кабель, кварцевые генераторы и конденсаторы (керамические, пленочные, электролитические), за счёт заключения дистрибьюторских договоров

Мы предлагаем:

- Конкурентоспособные цены и скидки постоянным клиентам.
- Специальные условия для постоянных клиентов.
- Подбор аналогов.
- Поставку компонентов в любых объемах, удовлетворяющих вашим потребностям.
- Приемлемые сроки поставки, возможна ускоренная поставка.
- Доставку товара в любую точку России и стран СНГ.
- Комплексную поставку.
- Работу по проектам и поставку образцов.
- Формирование склада под заказчика.
- Сертификаты соответствия на поставляемую продукцию (по желанию клиента).
- Тестирование поставляемой продукции.
- Поставку компонентов, требующих военную и космическую приемку.
- Входной контроль качества.
- Наличие сертификата ISO.

В составе нашей компании организован Конструкторский отдел, призванный помогать разработчикам, и инженерам.

Конструкторский отдел помогает осуществить:

- Регистрацию проекта у производителя компонентов.
- Техническую поддержку проекта.
- Защиту от снятия компонента с производства.
- Оценку стоимости проекта по компонентам.
- Изготовление тестовой платы монтаж и пусконаладочные работы.



Тел: +7 (812) 336 43 04 (многоканальный)

Email: [org@lifeelectronics.ru](mailto:org@lifeelectronics.ru)