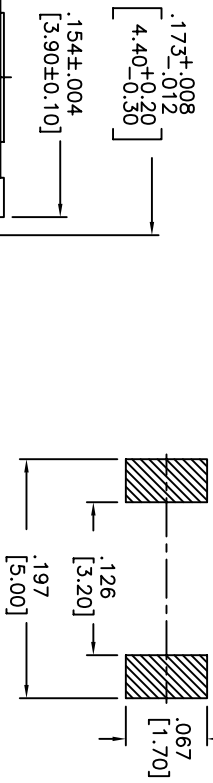
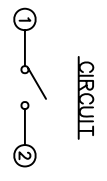
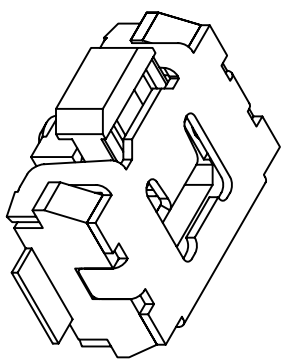
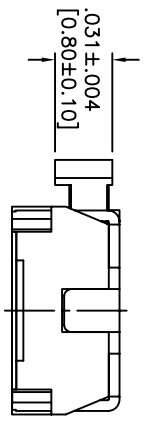
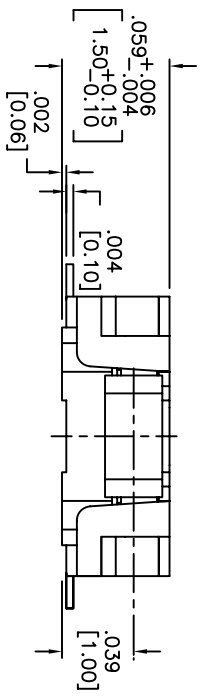
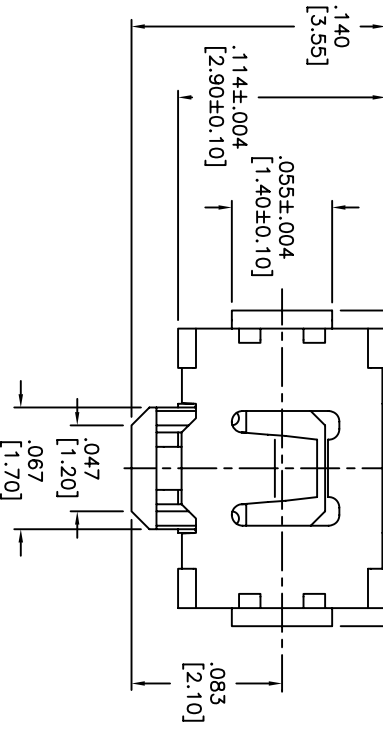


THIS DOCUMENT IS THE PROPERTY OF APDM COMPONENTS AND SHALL NOT BE COPIED, REPRODUCED, DISCLOSED OR USED AS THE BASIS FOR MANUFACTURING OR SALE WITHOUT PERMISSION OF A DULY AUTHORIZED REPRESENTATIVE OF APDM COMPONENTS INC.



HATCHED AREA SHOWS SOLDERING LAND  
P.C.B. LAYOUT  
UNLESS OTHERWISE SPECIFIED  
ALL P.C. TOLERANCES ARE ±.002 [0.05]



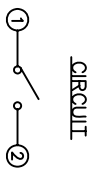
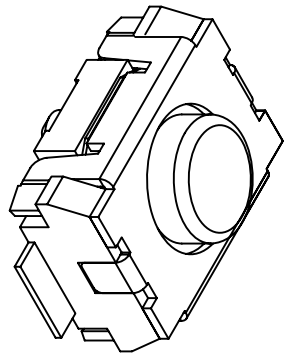
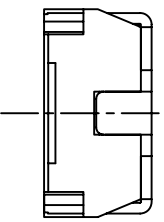
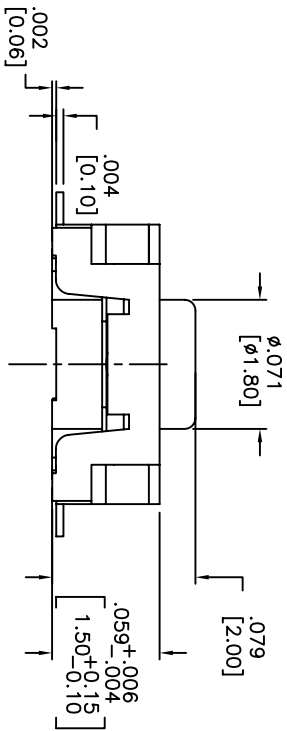
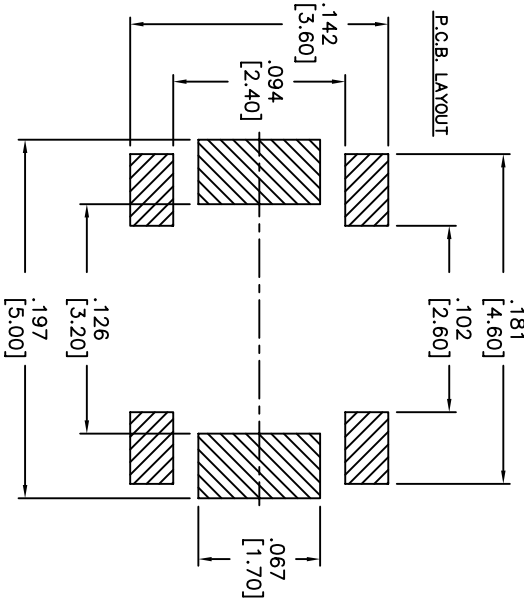
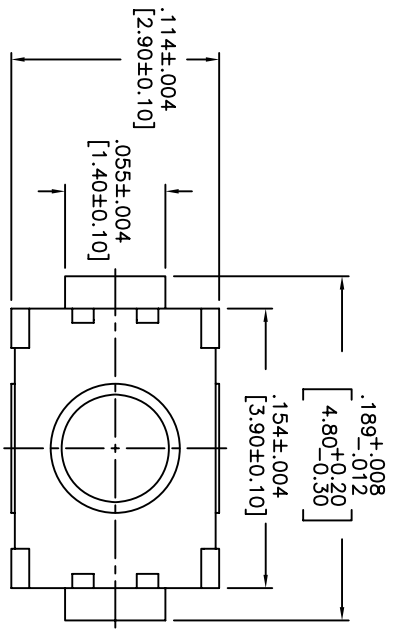
DATE	SYM	REVISION RECORD	DWN.	CK.
5/08	A	ECO# 778	CD	PD

DESCRIPTION: SIDE PUSH MECHANICAL CONTACT SWITCH.  
SPECIFICATIONS:  
OPERATION FORCE: 220± 65gf  
STROKE: 0.2±0.08mm  
OPERATION TEMP.: -25°C TO +70°C.  
STORAGE TEMP.: -30°C TO +80°C.  
ELECTRICAL LIFE: 100,000 CYCLES.  
RATING: 50mA, 12VDC.  
CONTACT RESISTANCE: 100mΩ MAX.  
INSULATION RESISTANCE: 100MΩ MIN. AT 100VDC.  
DIELECTRIC STRENGTH: 100VAC/1 MINUTE.  
CONTACT ARRANGEMENT: 1 POLE 1 THROW.  
VIBRATION TEST: PASSED METHOD 201A  
MIL-STD-202F.  
SHOCK TEST: 50G PER METHOD 213B CONDITION A OF MIL-STD-202F  
MATERIALS:  
COVER: STAINLESS STEEL  
BASE: LCP HIGH-TEMP. THERMOPLASTIC.  
COLOR, WHITE.  
STEM: LCP HIGH-TEMP. THERMOPLASTIC.  
COLOR, BLACK.  
CONTACT DISK: STAINLESS STEEL WITH SILVER CLADDING  
TERMINAL: BRASS WITH SILVER PLATING  
PACKAGING: TAPE AND REEL (3,500 PIECES PER REEL)  
ROHS COMPLIANT  
LEAD FREE SOLDERING COMPATIBLE  
HAND SOLDERING: 320°c MAX WITH 30 WATT IRON FOR 2 SECONDS  
IR REFLOW: 260°C MAX

CUSTOMER PART NO.: 263262

<p>9A. INSPECT:  DESIGNATES CRITICAL DIMENSION</p>		<p>APDM APDM COMPONENTS INC. 10000 W. 110th Ave. Denver, CO 80231 Phone: 303-772-3534 Fax: 303-772-3534</p>		<p>PN: CJD BR: PJD</p>	
<p>TOLERANCES (UNLESS OTHERWISE SPECIFIED) .XX±.XX [0.05] .XXX±.XXX [0.20] .XXXX±.XXXX [0.02] ANGLE = 40.5°</p>		<p>DESIGN: 63 Neck RD. 01835 Hawthorne, IA 51835 Phone: 515-372-3534 Fax: 515-372-3534</p>		<p>THIRD ANGLE PROJECTION</p>	
<p>TITLE TACT SWITCH</p>		<p>SHEET 1 OF 1</p>		<p>SIZE B</p>	
<p>DATE: 7/31/06</p>		<p>SCALE 15:1</p>		<p>DRAWING NO. AMPFTVTR</p>	
<p>DO NOT SCALE DRAWING</p>		<p>REV A</p>		<p>REV</p>	

THIS DOCUMENT IS THE PROPERTY OF APEN COMPONENTS AND SHALL NOT BE COPIED, REPRODUCED, DISCLOSED OR USED AS THE BASIS FOR MANUFACTURING OR SALE WITHOUT PERMISSION OF A DULY AUTHORIZED REPRESENTATIVE OF APEN COMPONENTS INC.



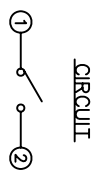
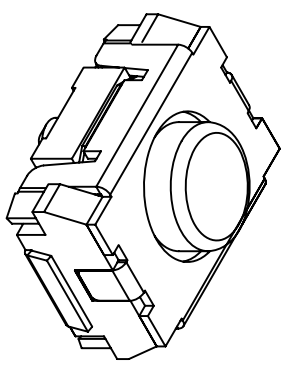
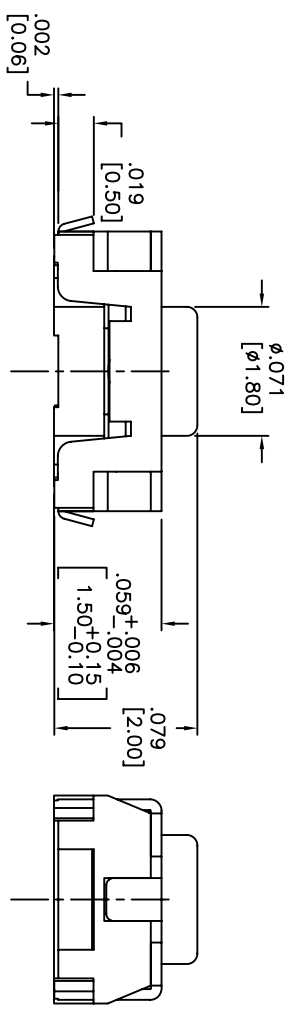
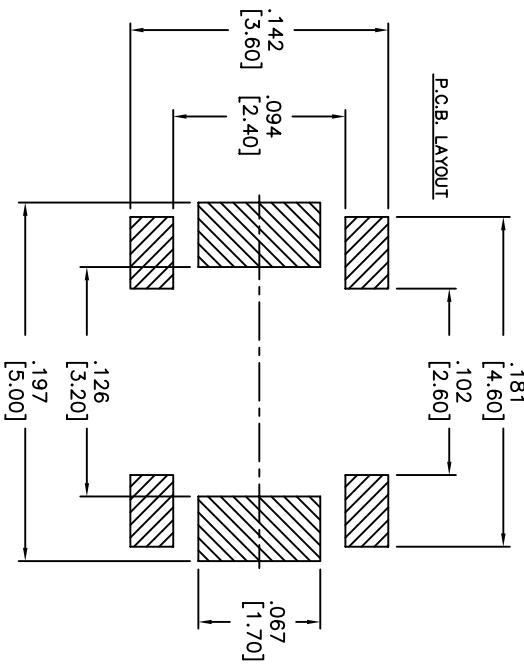
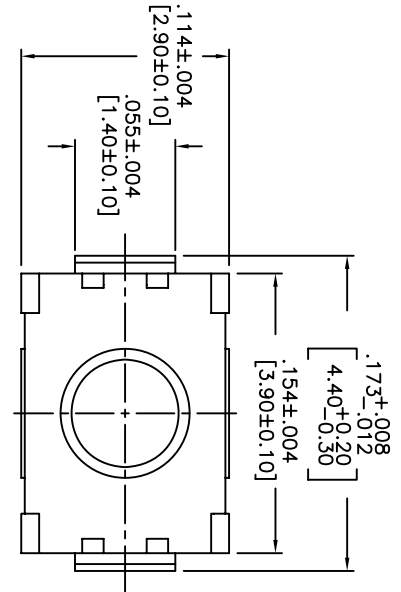
DATE	SYM	REVISION RECORD	DWN.	CK.
5/08	B	ECO# 778	CD	PD

DESCRIPTION: VERTICAL PUSH MECHANICAL CONTACT SWITCH.  
 SPECIFICATIONS:  
 OPERATION FORCE: 160±50gf  
 OPERATION TEMP.: -25°C TO +70°C.  
 STORAGE TEMP.: -30°C TO +80°C.  
 ELECTRICAL LIFE: 100,000 CYCLES.  
 RATING: 50ma, 12VDC.  
 VIBRATION RESISTANCE: PASSES METHOD 201A MIL-STD-202F  
 SHOCK RESISTANCE: 50G PER METHOD 213B MIL-STD-202F  
 CONTACT RESISTANCE: 100mΩ MAX.  
 INSULATION RESISTANCE: 100MΩ MIN. AT 100VDC.  
 DIELECTRIC STRENGTH: 100VAC/1 MINUTE.  
 CONTACT ARRANGEMENT: 1 POLE 1 THROW.  
 MATERIALS:  
 COVER: STAINLESS STEEL  
 BASE: LCP HIGH-TEMP. THERMOPLASTIC.  
 COLOR, WHITE.  
 STEM: LCP HIGH-TEMP. THERMOPLASTIC.  
 COLOR, BLACK  
 CONTACT DISK: STAINLESS STEEL WITH SILVER CLADDING  
 TERMINAL: BRASS WITH SILVER PLATING  
 TAPE: TEFLON.  
 TAPE & REEL PACKAGING, 2,000 PER REEL  
 SOLDERING:  
 HAND SOLDERING: 30 WATT IRON AT 320°C FOR 2 SECONDS  
 IR REFLOW: 240°C MAX  
 ROHS COMPLIANT

0A. INSPECT:		63 Neck Rd. Haverhill, MA 01830 Telephone: 978-372-5554 Fax: 978-372-5554		DRN. CJD BR:
DESIGNER: CRITICAL DIMENSION		SHEET 1 OF 1	SIZE B	SCALE 15:1
TOLERANCES (UNLESS AS NOTED) .XX±.01(0.5) .XXX±.008(0.20) .XXXX±.0008(0.02) ANGLE = 30.5°		TITLE VERTICAL PUSH TACT SWITCH	THIRD ANGLE PROJECTION	PJD
DO NOT SCALE DRAWING NO. AMPTFGP2VTR	DATE 2/4/08	DRAWING NO. AMPTFGP2VTR	REV B	



THIS DOCUMENT IS THE PROPERTY OF APDM COMPONENTS AND SHALL NOT BE COPIED, REPRODUCED, DISCLOSED OR SALE WITHOUT PERMISSION OF A DULY AUTHORIZED REPRESENTATIVE OF APDM COMPONENTS INC.

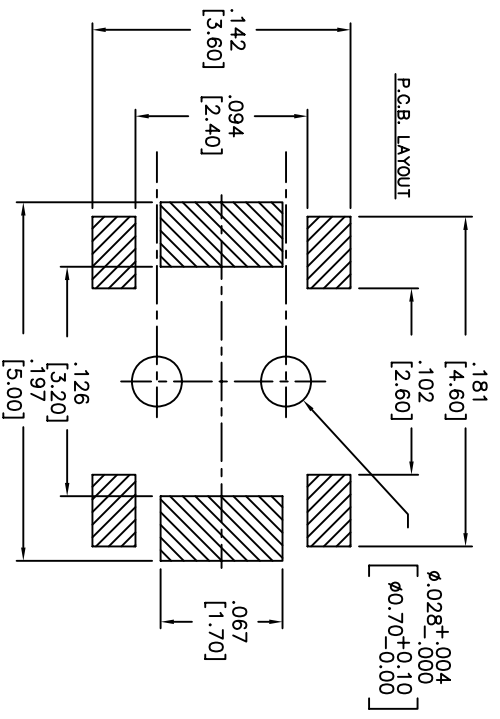
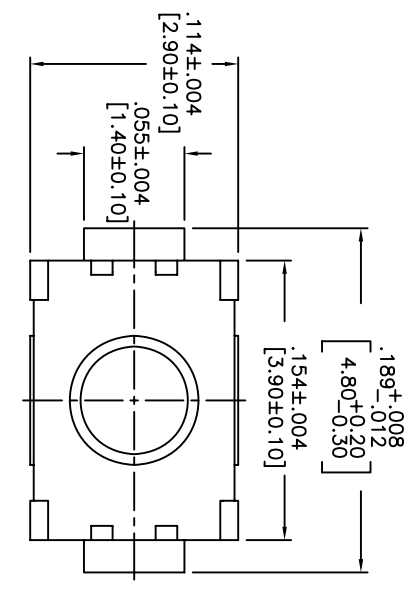


DATE	SYM	REVISION RECORD	DWNL	CK
5/08	B	ECO# 778	CD	PD

DESCRIPTION: VERTICAL PUSH MECHANICAL CONTACT SWITCH.  
 SPECIFICATIONS:  
 OPERATION FORCE: 160± 50gf  
 OPERATION TEMP.: -25°C TO +70°C.  
 STORAGE TEMP.: -30°C TO +80°C.  
 ELECTRICAL LIFE: 100,000 CYCLES.  
 RATING: 50mA, 12VDC.  
 VIBRATION RESISTANCE: PASSES METHOD 201A MIL-STD-202F  
 SHOCK RESISTANCE: 50G PER METHOD 213B MIL-STD-202F  
 CONTACT RESISTANCE: 100mΩ MAX.  
 INSULATION RESISTANCE: 100MΩ MIN. AT 100VDC.  
 DIELECTRIC STRENGTH: 100VAC/1 MINUTE.  
 CONTACT ARRANGEMENT: 1 POLE 1 THROW.  
 MATERIALS:  
 COVER: STAINLESS STEEL  
 BASE: LCP HIGH-TEMP. THERMOPLASTIC.  
 COLOR, WHITE.  
 STEM: LCP HIGH-TEMP. THERMOPLASTIC.  
 COLOR, BLACK.  
 CONTACT DISK: STAINLESS STEEL  
 WITH SILVER CLADDING  
 TERMINAL: BRASS WITH SILVER PLATING  
 TAPE: TEFLON.  
 TAPE & REEL PACKAGING, 2,000 PER REEL  
 SOLDERING:  
 HAND SOLDERING: 30 WATT IRON AT 320°C FOR 2 SECONDS  
 IR REFLOW: 240°C MAX  
 ROHS COMPLIANT

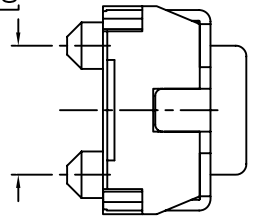
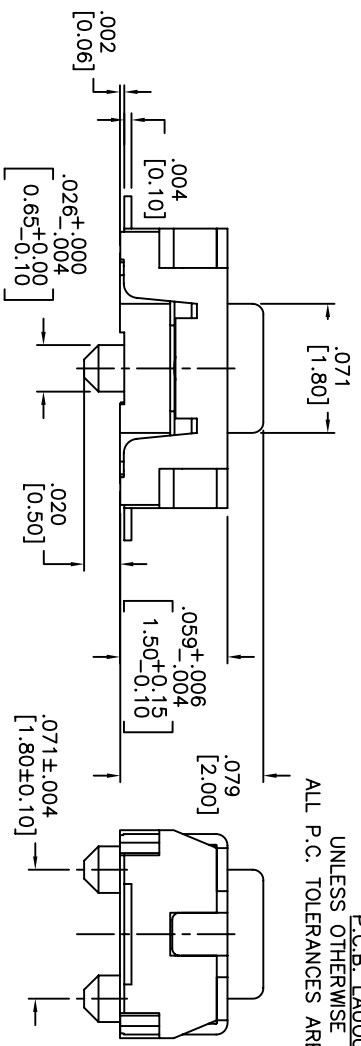
<b>Q.A. INSPECT:</b> 		<b>DESIGNER'S CRITICAL DIMENSION</b>		<b>PERN. CJD</b>	
<b>TOLERANCES (UNLESS OTHERWISE SPECIFIED)</b> .XX = ±.02(0.5) .XXX = ±.008(0.20) .XXXX = ±.0008(0.02) ANGLE = 40.5°		 APDM 63 Nork Rd. Hawthorn Hill, MA 01835 413-686-3772-3534 FAX: 413-686-3534		DRN. CJD BR: BR OR: PJD THIRD ANGLE PROJECTION	
<b>TITLE</b> VERTICAL PUSH TACT SWITCH		<b>SHEET</b> 1 OF 1		<b>SCALE</b> 15:1	
<b>DATE</b> 2/4/08		<b>DRAWING NO.</b> AMPPTLGP2VTR		<b>REV</b> B	

THIS DOCUMENT IS THE PROPERTY OF APDM COMPONENTS AND SHALL NOT BE COPIED, REPRODUCED, DISCLOSED OR USED AS THE BASIS FOR MANUFACTURING OR SALE WITHOUT PERMISSION OF A DULY AUTHORIZED REPRESENTATIVE OF APDM COMPONENTS INC.

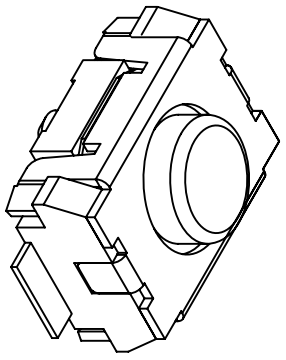


HATCHED AREA SHOWS SOLDERING LAND

P.C.B. LAYOUT  
UNLESS OTHERWISE SPECIFIED  
ALL P.C. TOLERANCES ARE ±.002 [0.50]



CIRCUIT



DATE	SYM	REVISION RECORD	DWN.	CK.
5/08	B	ECO# 778	CD	PD

DESCRIPTION: VERTICAL PUSH MECHANICAL CONTACT SWITCH.

SPECIFICATIONS:

OPERATION FORCE: 160± 50gf  
 OPERATION TEMP.: -25°C TO +70°C.  
 STORAGE TEMP.: -30°C TO +80°C.  
 ELECTRICAL LIFE: 200,000 CYCLES.  
 RATING: 50ma, 12VDC.  
 VIBRATION RESISTANCE: PASSES METHOD 201A  
 MIL-STD-202F  
 SHOCK RESISTANCE: 50G PER METHOD 213B  
 MIL-STD-202F  
 CONTACT RESISTANCE: 100mΩ MAX.  
 INSULATION RESISTANCE: 100MΩ MIN. AT 100VDC.  
 DIELECTRIC STRENGTH: 100VAC/1 MINUTE.  
 CONTACT ARRANGEMENT: 1 POLE 1 THROW.  
 TRAVEL: .005 ±.002 [0.13 ±0.05]

MATERIALS:

COVER: STAINLESS STEEL  
 BASE: LCP HIGH-TEMP. THERMOPLASTIC.  
 COLOR, WHITE.  
 STEM: LCP HIGH-TEMP. THERMOPLASTIC.  
 COLOR, BLACK.  
 CONTACT DISK: STAINLESS STEEL WITH SILVER CLADDING  
 TERMINAL: BRASS WITH SILVER PLATING  
 TAPE: TEFLON.  
 TAPE & REEL PACKAGING: 2,000 PER REEL  
 SOLDERING:  
 HAND SOLDERING: 30 WATT IRON AT 320°C FOR 2 SECONDS  
 IR REFLOW: 240°C MAX  
 ROHS COMPLIANT

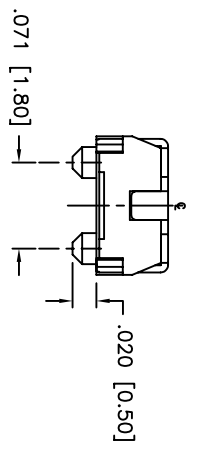
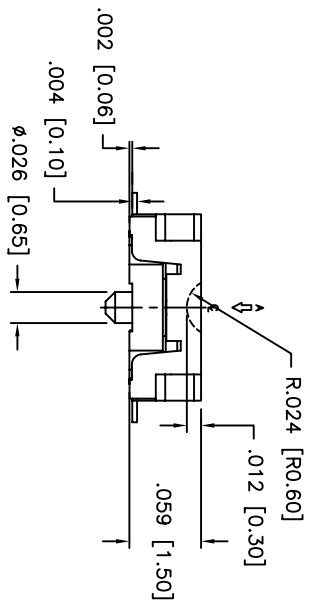
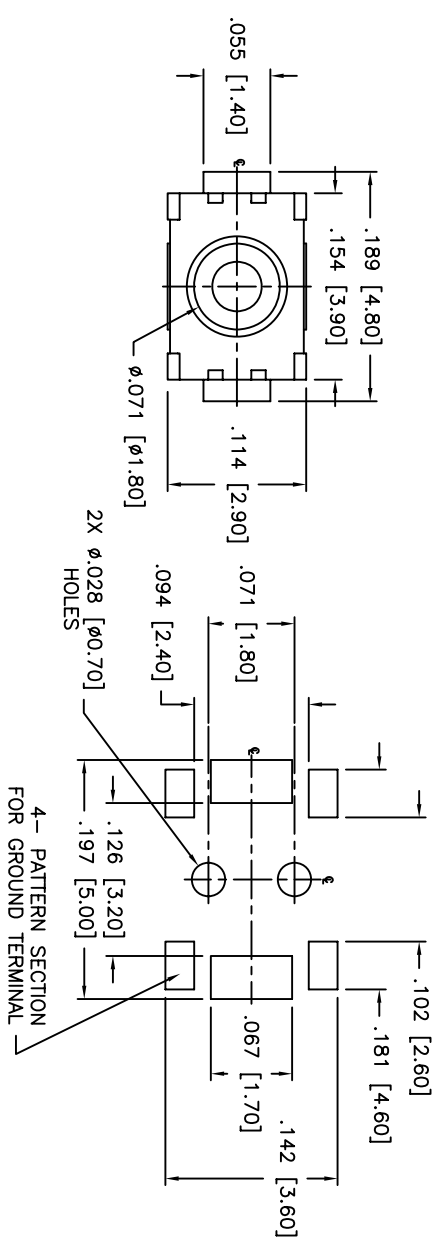
Q.A. INSPECT:	DESIGNER'S INITIAL:	APDM	63 Neck Rd. Haverhill, MA 01830 Phone: 978-372-5554 Fax: 978-372-5554	DRN. CJD
TOLERANCES (UNLESS OTHERWISE SPECIFIED)	INCH (MM)	SHEET 1 OF 1	SIZE B	SCALE 15:1
.XX±.XX [0.5]	.XX±.XX [0.20]			
.XXX±.XXX [0.02]	.XXX±.XXX [0.02]			
ANGLE = 30.5°				
DO NOT SCALE	DATE 6/30/05	DRAWING NO. AMPTCFGP2VTR		REV B

TITLE	TACT SWITCH
THIRD ANGLE PROJECTION	





THIS DOCUMENT IS THE PROPERTY OF APDM COMPONENTS AND SHALL NOT BE COPIED, REPRODUCED, DISCLOSED OR USED AS THE BASIS FOR MANUFACTURING OR SALE WITHOUT PERMISSION OF A DULY AUTHORIZED REPRESENTATIVE OF APDM COMPONENTS INC.



DATE	SYM	REVISION RECORD	DWN.	CK.
1/06	A	ECO # 526	CD	PD
5/08	B	ECO# 778	CD	PD

DESCRIPTION: SPST, NORMALLY OPEN, MOMENTARY, SURFACE MOUNT TACT SWITCH WITH LOCATING PINS

SPECIFICATIONS:  
 CONTACT RATING: 50mA @ 12VDC  
 INITIAL CONTACT RESISTANCE: 100MOHMS MAX.  
 INSULATION RESISTANCE: 100MOHMS MIN. @ 500VDC  
 DIELECTRIC STRENGTH: 100VAC FOR 1 MINUTE  
 ELECTRICAL LIFE: 200,000 CYCLES MIN.  
 OPERATING TEMPERATURE RANGE: -25°C to +70°C  
 STOP STRENGTH: MAX 3kgf VERTICAL STATIC LOAD  
 CONT. FOR 15 SEC.

ACTUATION FORCE: 160± 50gf  
 STORAGE TEMPERATURE RANGE: -30°C TO +80°C  
 SHOCK RESISTANCE: 50G PER METHOD 213B, MIL-STD-202F  
 VIBRATION RESISTANCE: PASSES METHOD 201A, MIL-STD-202F

SOLDERING:  
 IR REFLOW: 240°C MAX.  
 HAND SOLDERING: 350°C MAX. FOR 3 SECONDS MAX.  
 (30 WATT IRON MAX.)

MATERIALS:  
 BASE: LCP HIGH-TEMP THERMOPLASTIC UL94V-0  
 ACTUATOR: LCP HIGH-TEMP THERMOPLASTIC UL94V-0  
 COVER: STAINLESS STEEL  
 TERMINALS: SILVER PLATED BRASS  
 SHORTING CONTACT: STAINLESS STEEL WITH SILVER CLADDING  
 TAPE: TEFLON  
 ROHS COMPLIANT

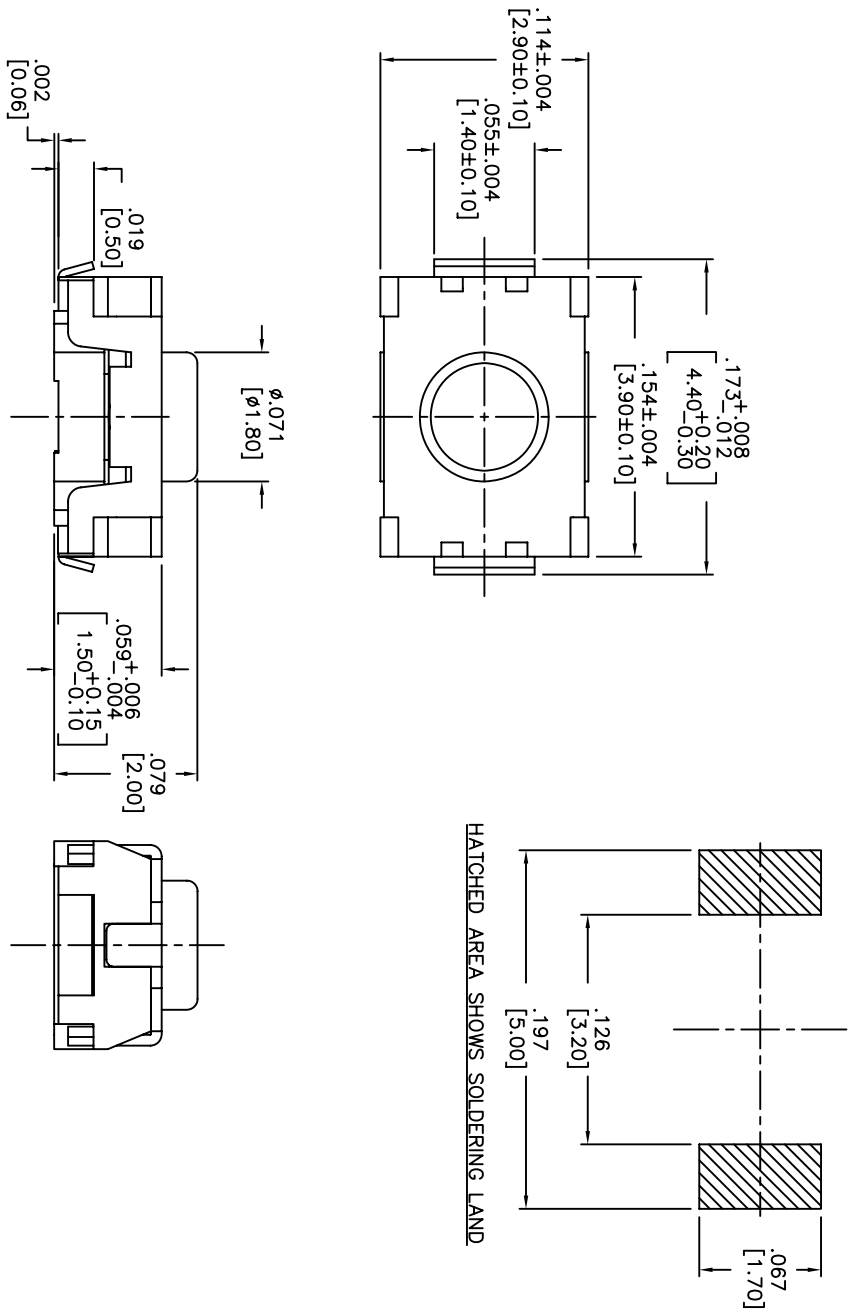
NOTE:  
 1. AFTER SOLDERING, RETURN SWITCHES TO NORMAL TEMPERATURE BEFORE WASHING.

<b>Q.A. INSPECT:</b> 		<b>DESIGNER'S INITIAL:</b> DIMENSION		<b>DRN.:</b> CJD	
<b>TOLERANCES</b> (UNLESS AS NOTED) .XX=±.02[0.5] .XXX=±.008[0.20] .XXXX=±.0008[0.02] ANGLE = 40.5°		<b>SHEET:</b> 1 OF 1		<b>BR.:</b> BR	
<b>TITLE:</b> TACT SWITCH WITH LOCATING PINS		<b>SIZE:</b> B		<b>OR.:</b> PJD	
<b>DO NOT SCALE</b> DATE: 07/20/05		<b>SCALE:</b> 10:1		<b>THIRD ANGLE PROJECTION</b>	
<b>DRAWING NO.:</b> AMPTCFGP1VTR		<b>REV.:</b> B			



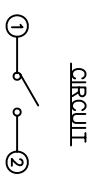
THIS DOCUMENT IS THE PROPERTY OF APEN COMPONENTS AND SHALL NOT BE COPIED, REPRODUCED, DISCLOSED OR USED AS THE BASIS FOR MANUFACTURING OR SALE WITHOUT PERMISSION OF A DULY AUTHORIZED REPRESENTATIVE OF APEN COMPONENTS INC.

P.C.B. LAYOUT



DATE	SYM	REVISION RECORD	DWN.	CK.
1/06	A	ECO# 526	CD	PD
5/08	B	ECO# 778	CD	PD

DESCRIPTION: VERTICAL PUSH MECHANICAL CONTACT SWITCH.  
 SPECIFICATIONS:  
 OPERATION FORCE: 220± 65gf  
 OPERATION TEMP.: -25°C TO +70°C.  
 STORAGE TEMP.: -30°C TO +80°C.  
 ELECTRICAL LIFE: 200,000 CYCLES.  
 RATING: 50mA, 12VDC.  
 VIBRATION RESISTANCE: PASSES METHOD 201A  
 MIL-STD-202F  
 SHOCK RESISTANCE: 50G PER METHOD 213B  
 MIL-STD-202F  
 CONTACT RESISTANCE: 100mΩ MAX.  
 INSULATION RESISTANCE: 100MΩ MIN. AT 100VDC.  
 DIELECTRIC STRENGTH: 100VAC/1 MINUTE.  
 CONTACT ARRANGEMENT: 1 POLE 1 THROW.  
 MATERIALS:  
 COVER: STAINLESS STEEL  
 BASE: LCP HIGH-TEMP. THERMOPLASTIC.  
 COLOR, WHITE.  
 STEM: LCP HIGH-TEMP. THERMOPLASTIC.  
 COLOR, BLACK.  
 CONTACT DISK: STAINLESS STEEL WITH SILVER CLADDING  
 TERMINAL: BRASS WITH SILVER PLATING  
 TAPE & REEL PACKAGING, 2,000 PER REEL  
 SOLDERING:  
 HAND SOLDERING: 30 WATT IRON AT 320°C FOR 2 SECONDS  
 IR REFLOW: 240°C MAX  
 ROHS COMPLIANT  
 LEAD FREE PROCESS COMPATIBLE



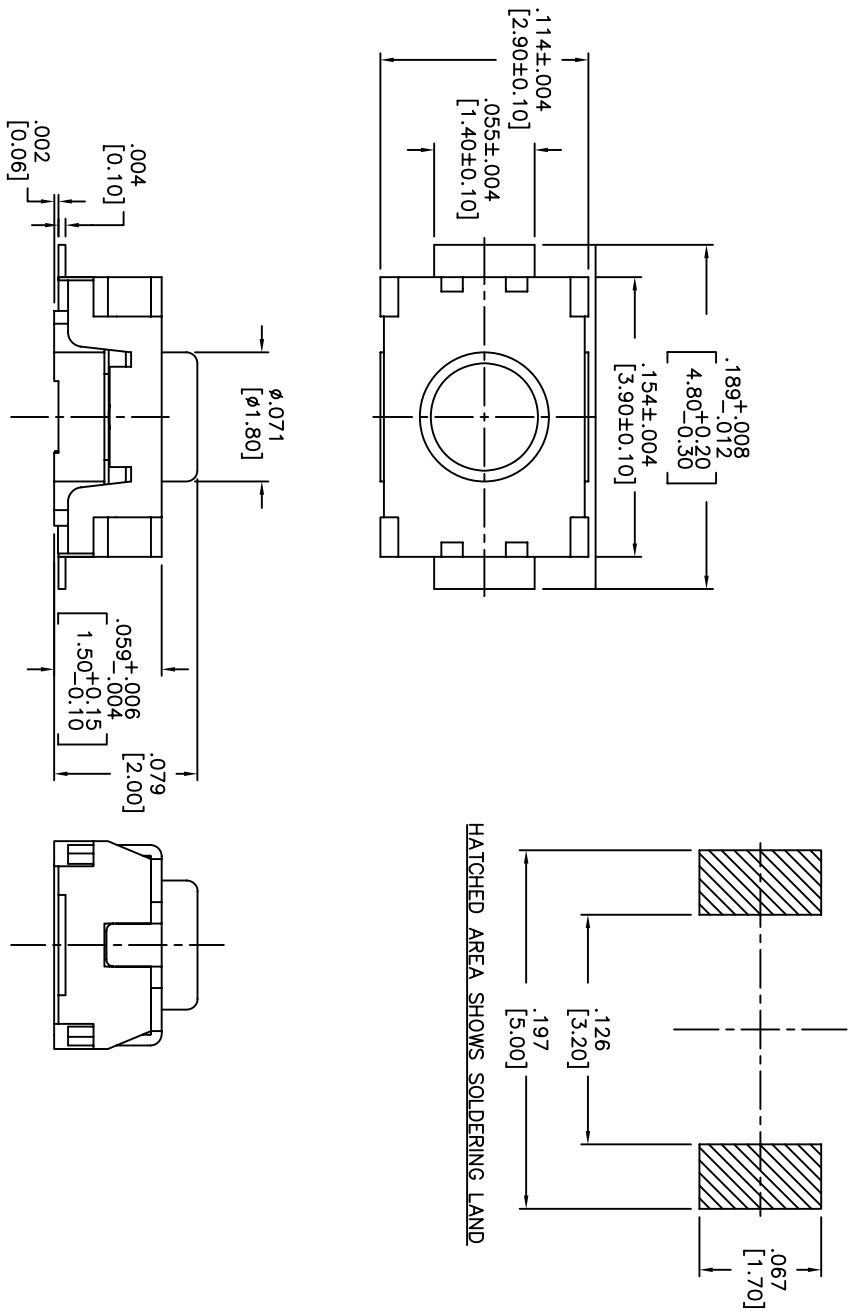
0A. INSPECT: DESIGNS: CRITICAL DIMENSION TOLERANCES (CHECK AS NOTED) .XX=±.02[0.5] .XXX=±.008[0.20] .XXXX=±.0008[0.02] ANGLE = 30.5°		 63 Neck Rd. Haverhill, MA 01830 Phone: 978-372-3554 Fax: 978-372-3554		DRN. CJD BR. PJD OR. PJD	
DO NOT SCALE	DATE	DRAWING NO.	REV		
	01/23/06	AMPTLP2VTR	B		

1 2 3 4 5 6 7 8

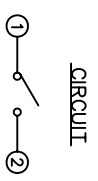
A B C D E

THIS DOCUMENT IS THE PROPERTY OF APDM COMPONENTS AND SHALL NOT BE COPIED, REPRODUCED, DISCLOSED OR SALE WITHOUT PERMISSION OF A DULY AUTHORIZED REPRESENTATIVE OF APDM COMPONENTS INC.

P.C.B. LAYOUT



HATCHED AREA SHOWS SOLDERING LAND



CIRCUIT

DESCRIPTION: VERTICAL PUSH MECHANICAL CONTACT SWITCH.  
 SPECIFICATIONS:  
 OPERATION FORCE: 160± 50gf  
 OPERATION TEMP.: -25°C TO +70°C.  
 STORAGE TEMP.: -30°C TO +80°C.  
 ELECTRICAL LIFE: 200,000 CYCLES.  
 RATING: 50mA, 12VDC.  
 VIBRATION RESISTANCE: PASSES METHOD 201A  
 MIL-STD-202F  
 SHOCK RESISTANCE: 50G PER METHOD 213B  
 MIL-STD-202F  
 CONTACT RESISTANCE: 100mΩ MAX.  
 INSULATION RESISTANCE: 100MΩ MIN. AT 100VDC.  
 DIELECTRIC STRENGTH: 100VAC/1 MINUTE.  
 CONTACT ARRANGEMENT: 1 POLE 1 THROW.  
 MATERIALS:  
 COVER: STAINLESS STEEL  
 BASE: LCP HIGH-TEMP. THERMOPLASTIC.  
 COLOR, WHITE.  
 STEM: LCP HIGH-TEMP. THERMOPLASTIC.  
 COLOR, BLACK.  
 CONTACT DISK: STAINLESS STEEL WITH SILVER CLADDING  
 TERMINAL: BRASS WITH SILVER PLATING  
 TAPE: TEFLON.  
 TAPE & REEL PACKAGING, 2,000 PER REEL  
 SOLDERING:  
 HAND SOLDERING: 30 WATT IRON AT 320°C FOR 2 SECONDS  
 IR REFLOW: 260°C MAX  
 RoHS COMPLIANT  
 LEAD FREE PROCESS COMPATIBLE

DATE	SYM	REVISION RECORD	DWN.	CK.
5/08	B	ECO# 778	CD	PD

Q.A. INSPECT:		DESIGNER'S INITIAL:		DWN. CJD	
DIMENSION		TOLERANCES (UNLESS OTHERWISE SPECIFIED)		P.D.	
.XX = ±.02 [0.05]		.XXX = ±.008 [0.20]		THIRD ANGLE PROJECTION	
.XXXX = ±.0008 [0.02]		ANGLE = 30.5°		REV B	
DO NOT SCALE		DATE: 01/23/06		DRAWING NO. AMPTFP2VTR	

1 2 3 4 5 6 7 8

Компания «Life Electronics» занимается поставками электронных компонентов импортного и отечественного производства от производителей и со складов крупных дистрибьюторов Европы, Америки и Азии.

С конца 2013 года компания активно расширяет линейку поставок компонентов по направлению коаксиальный кабель, кварцевые генераторы и конденсаторы (керамические, пленочные, электролитические), за счёт заключения дистрибьюторских договоров

Мы предлагаем:

- Конкурентоспособные цены и скидки постоянным клиентам.
- Специальные условия для постоянных клиентов.
- Подбор аналогов.
- Поставку компонентов в любых объемах, удовлетворяющих вашим потребностям.
- Приемлемые сроки поставки, возможна ускоренная поставка.
- Доставку товара в любую точку России и стран СНГ.
- Комплексную поставку.
- Работу по проектам и поставку образцов.
- Формирование склада под заказчика.
- Сертификаты соответствия на поставляемую продукцию (по желанию клиента).
- Тестирование поставляемой продукции.
- Поставку компонентов, требующих военную и космическую приемку.
- Входной контроль качества.
- Наличие сертификата ISO.

В составе нашей компании организован Конструкторский отдел, призванный помогать разработчикам, и инженерам.

Конструкторский отдел помогает осуществить:

- Регистрацию проекта у производителя компонентов.
- Техническую поддержку проекта.
- Защиту от снятия компонента с производства.
- Оценку стоимости проекта по компонентам.
- Изготовление тестовой платы монтаж и пусконаладочные работы.



Тел: +7 (812) 336 43 04 (многоканальный)  
Email: [org@lifeelectronics.ru](mailto:org@lifeelectronics.ru)