

### DAISY-4X1-WW

~80° wide beam

#### TECHNICAL SPECIFICATIONS:

Dimensions	182.0 x 40.0 mm
Height	20.2 mm
Fastening	pin, screw, clips
ROHS compliant	yes ⓘ

#### MATERIAL SPECIFICATIONS:

Component	Type	Material	Colour	Finish
C16584_DAISY-4X1-WW	Linear lens	PMMA	clear	
C16590_DAISY-4X1-SHD	Shade	PC-ABS	black	gloss
C16784_DAISY-4X1-SHD-WHT	Shade	PC	white	gloss
C17422_DAISY-4X1-SHD2-MATT	Shade	PC	black	matt
C17423_DAISY-4X1-SHD2-WHT-MATT	Shade	PC	white	matt
C17528_DAISY-4X1-SHD-MET	Shade	PC-ABS	metal	gloss
C17535_DAISY-4X1-SHD2-MET-MATT	Shade	PC	metal	matt

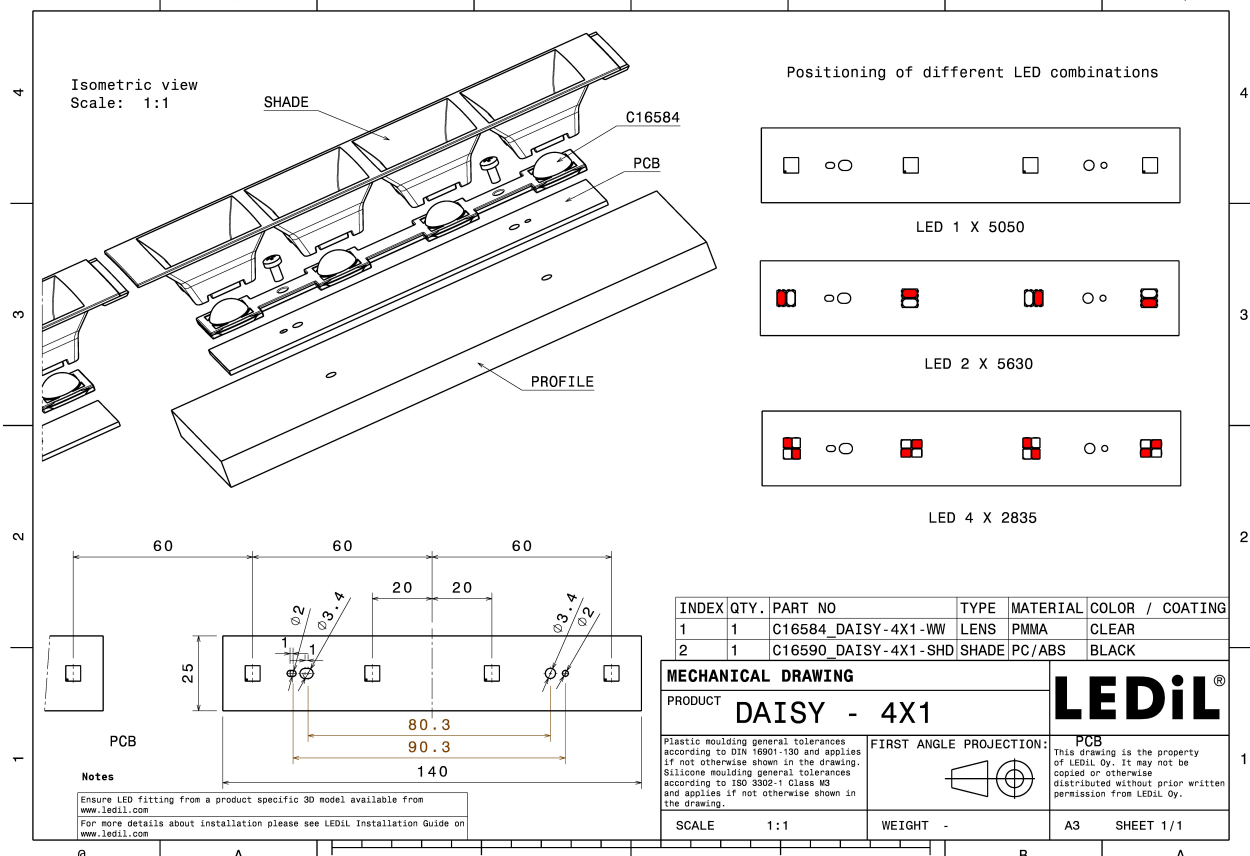
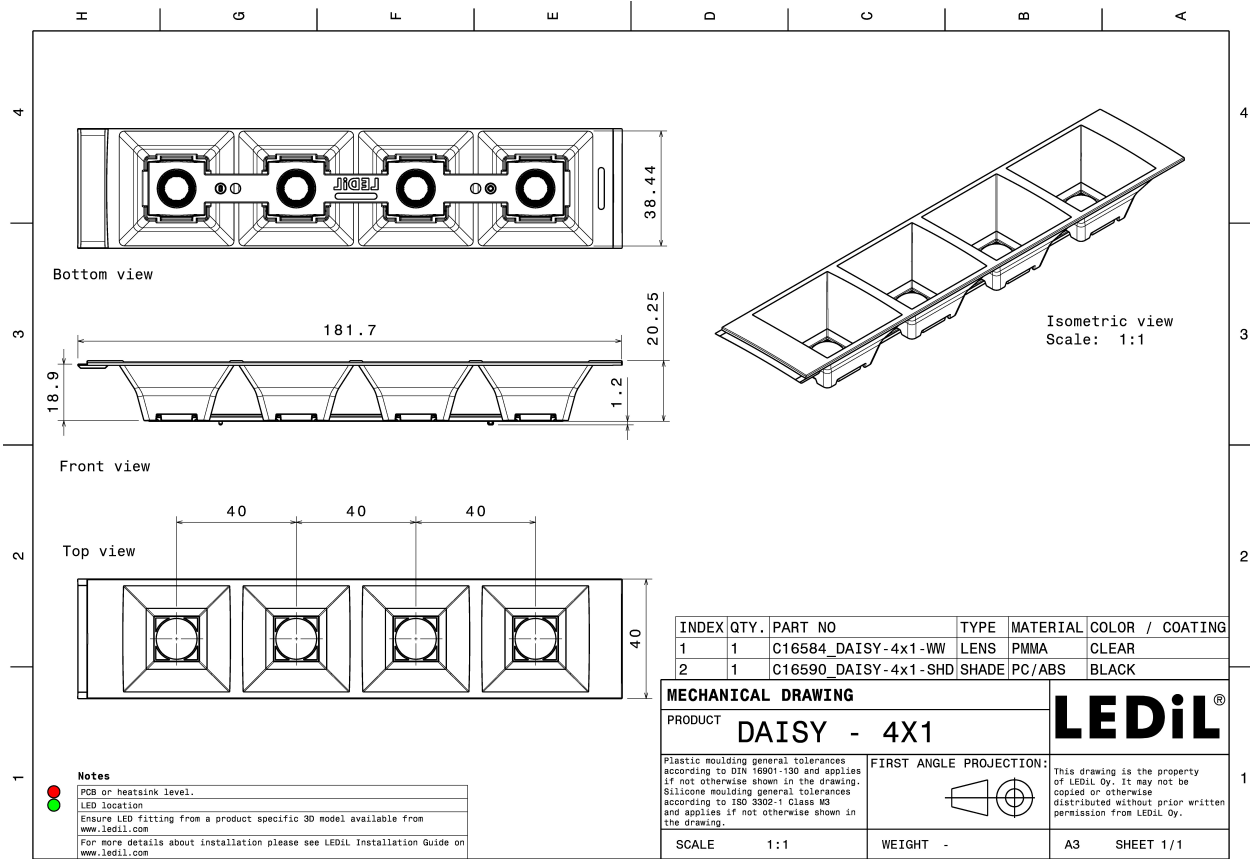


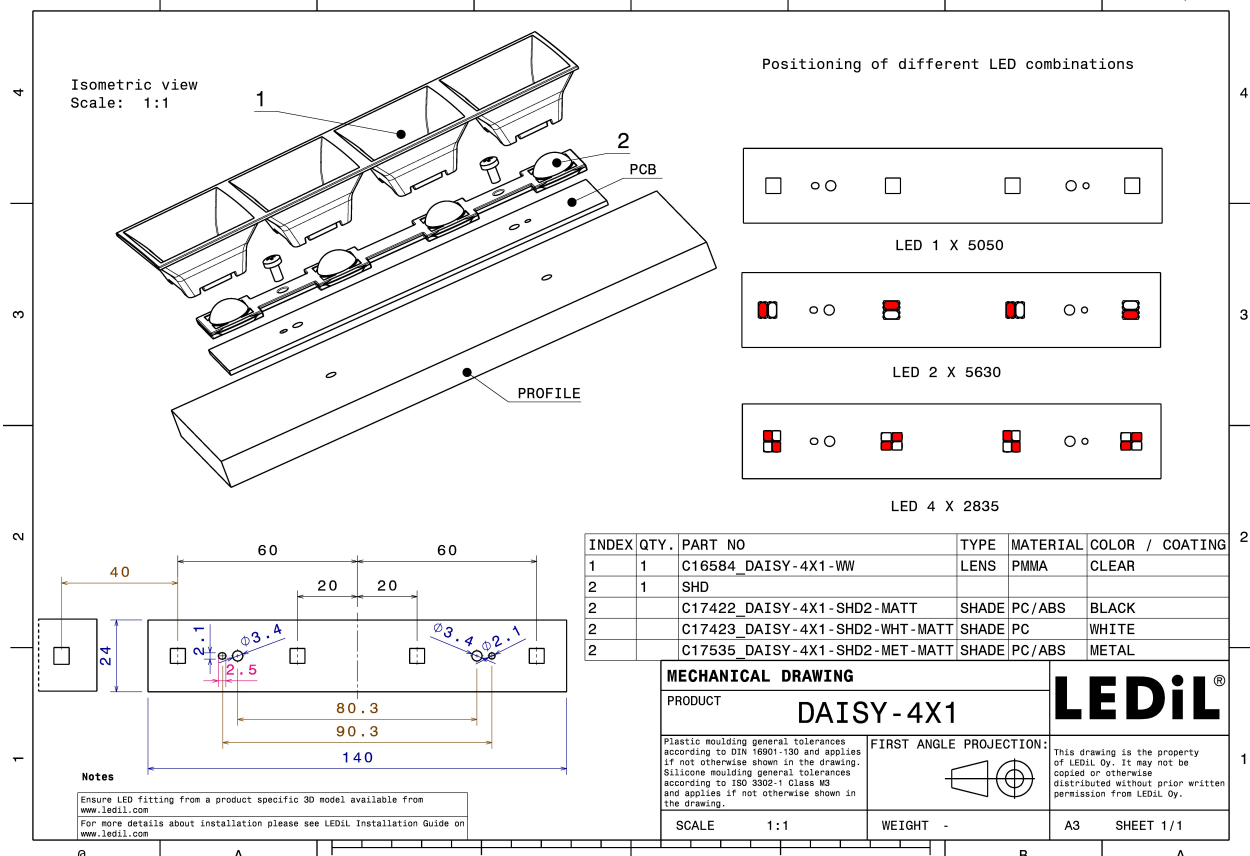
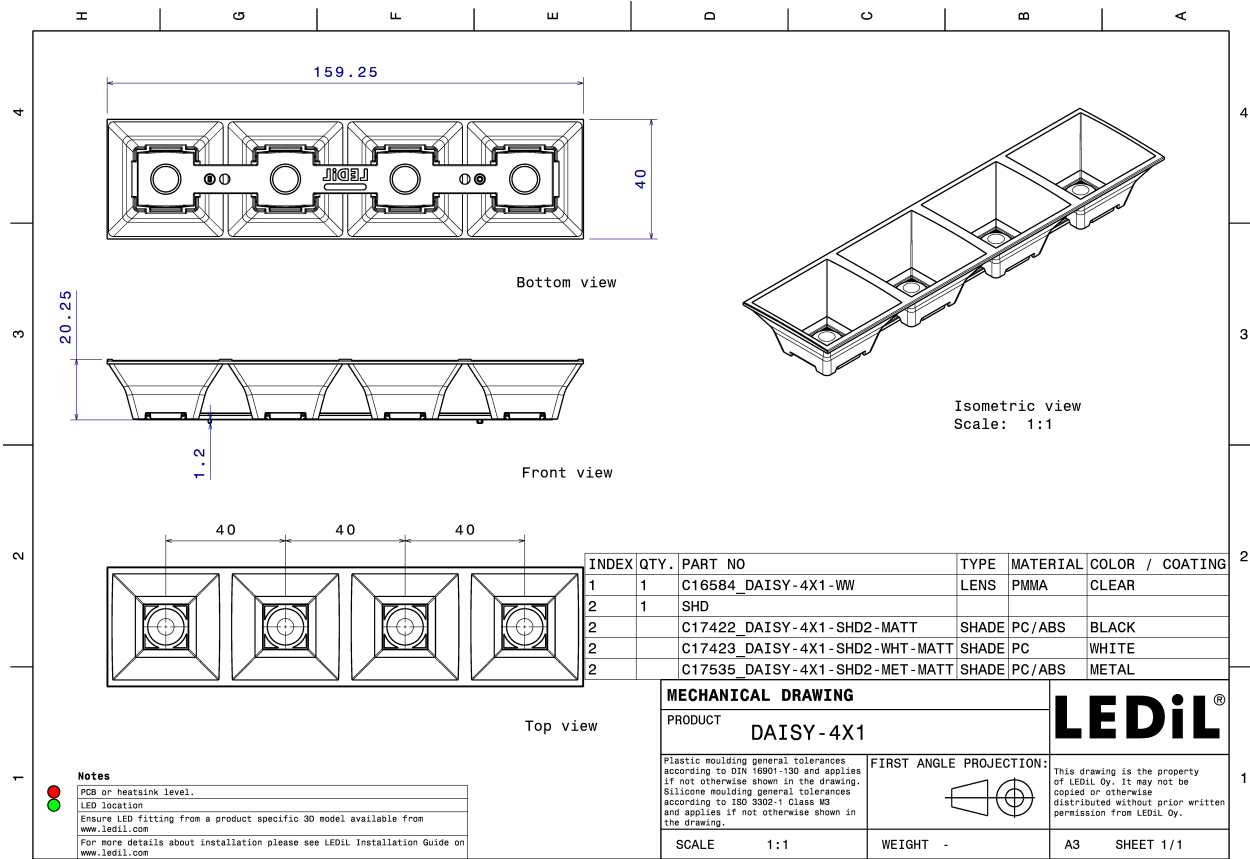
#### ORDERING INFORMATION:

##### Quantities for one set:

Linear lens	1
Shade	1

Component		Qty in box	MOQ	MPQ	Box weight (kg)
C16584_DAISY-4X1-WW » Box size: 480 x 280 x 300 mm	Linear lens	504	336	21	5.6
C17535_DAISY-4X1-SHD2-MET-MATT » Box size: 480 x 280 x 300 mm	Shade	168	336	42	
C17422_DAISY-4X1-SHD2-MATT » Box size: 480 x 280 x 300 mm	Shade	168	336	42	4.1
C17423_DAISY-4X1-SHD2-WHT-MATT » Box size: 480 x 280 x 300 mm	Shade	168	336	42	4.4
C16590_DAISY-4X1-SHD » Box size: 480 x 280 x 300 mm	Shade	168	336	42	4.3
C17528_DAISY-4X1-SHD-MET » Box size: 480 x 280 x 300 mm	Shade	168	336	42	
C16784_DAISY-4X1-SHD-WHT » Box size: 480 x 280 x 300 mm	Shade	168	336	42	4.3

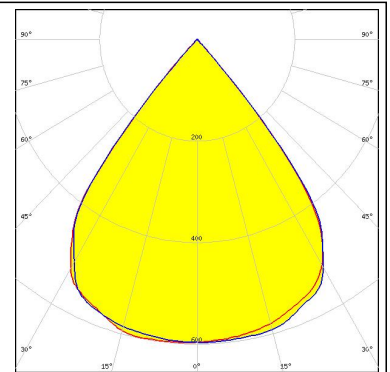




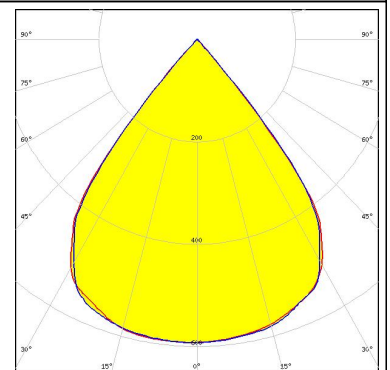
### PHOTOMETRIC DATA (MEASURED):



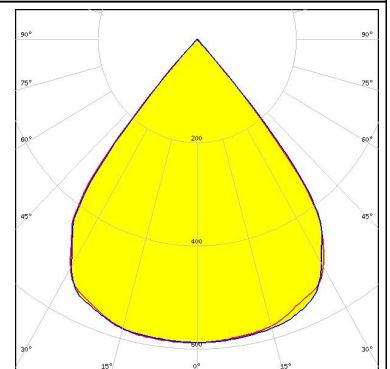
LED J Series 2835  
 FWHM 77.0°  
 Efficiency 86 %  
 Peak intensity 0.6 cd/lm  
 LEDs/each optic 2  
 Light colour White  
 Required components:  
 C16590\_DAISY-4X1-SHD



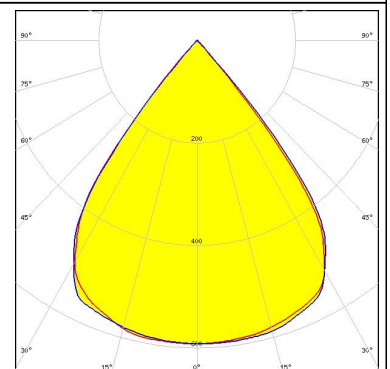
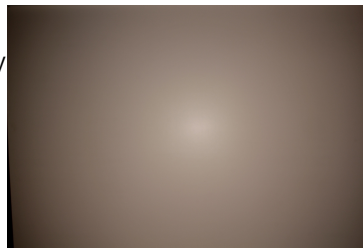
LED LG 3528  
 FWHM 77.0°  
 Efficiency 86 %  
 Peak intensity 0.6 cd/lm  
 LEDs/each optic 2  
 Light colour White  
 Required components:  
 C16590\_DAISY-4X1-SHD



LED LUXEON 2835 Line  
 FWHM 78.0°  
 Efficiency 87 %  
 Peak intensity 0.6 cd/lm  
 LEDs/each optic 2  
 Light colour White  
 Required components:  
 C16590\_DAISY-4X1-SHD



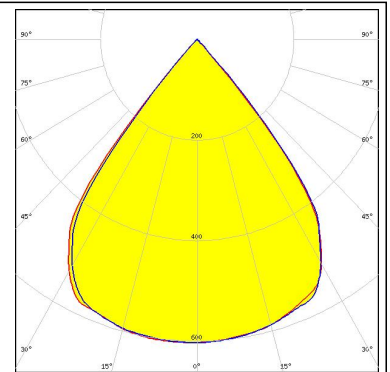
LED LinLED 156x28mm 2x200lm 827-865 2x2C 12V  
 FWHM 77.0°  
 Efficiency 85 %  
 Peak intensity 0.6 cd/lm  
 LEDs/each optic 1  
 Light colour White  
 Required components:  
 C16590\_DAISY-4X1-SHD



### PHOTOMETRIC DATA (MEASURED):

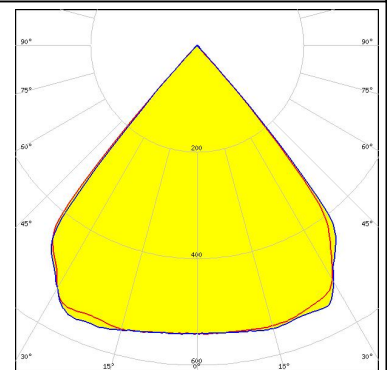
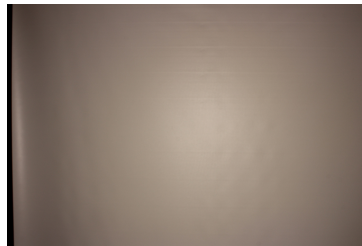
#### **MST** *Your solutions*

LED LinLED 156x28mm 400lm 8x0 2C 12V Opt G1  
 FWHM 77.0°  
 Efficiency 87 %  
 Peak intensity 0.6 cd/lm  
 LEDs/each optic 1  
 Light colour White  
 Required components:  
 C16590\_DAISSY-4X1-SHD



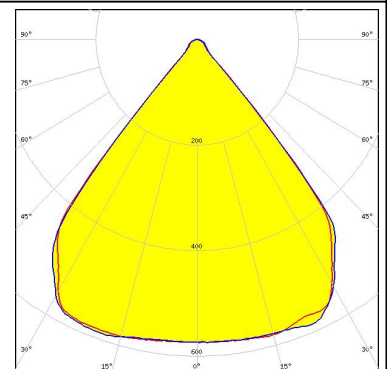
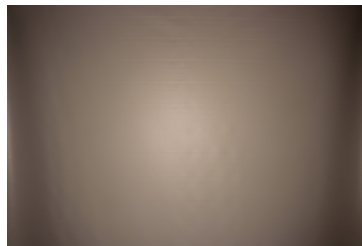
#### **NICHIA**

LED NF2W757G-MT (Tunable White)  
 FWHM 79.0°  
 Efficiency 86 %  
 Peak intensity 0.6 cd/lm  
 LEDs/each optic 1  
 Light colour Tunable White  
 Required components:  
 C16590\_DAISSY-4X1-SHD



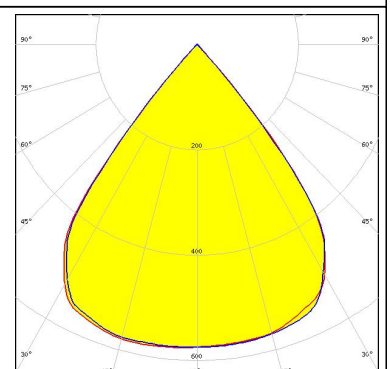
#### **NICHIA**

LED NF2W757G-MT (Tunable White)  
 FWHM 79.0°  
 Efficiency 96 %  
 Peak intensity 0.6 cd/lm  
 LEDs/each optic 1  
 Light colour Tunable White  
 Required components:  
 C16784\_DAISSY-4X1-SHD-WHT



#### **SAMSUNG**

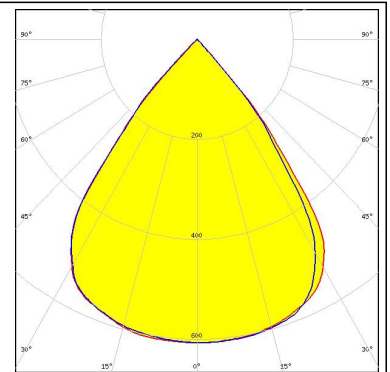
LED LM28xB Series  
 FWHM 78.0°  
 Efficiency 84 %  
 Peak intensity 0.6 cd/lm  
 LEDs/each optic 2  
 Light colour White  
 Required components:  
 C16590\_DAISSY-4X1-SHD



### PHOTOMETRIC DATA (MEASURED):

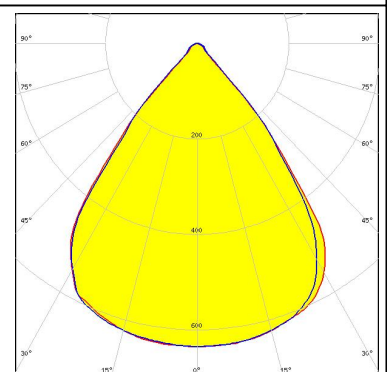
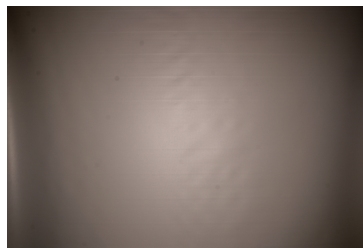
#### SAMSUNG

LED LM28xB Series  
 FWHM 75.0°  
 Efficiency 84 %  
 Peak intensity 0.6 cd/lm  
 LEDs/each optic 4  
 Light colour White  
 Required components:  
 C16590\_DAISSY-4X1-SHD



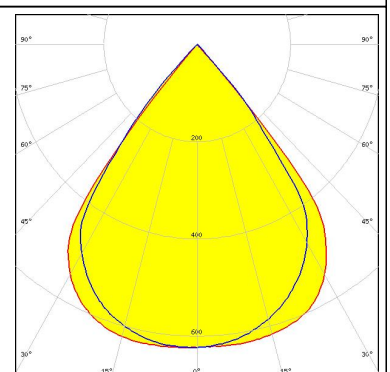
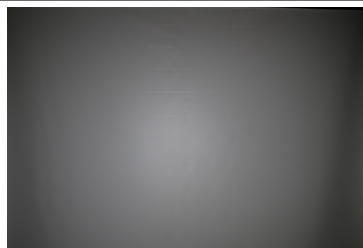
#### SAMSUNG

LED LM28xB Series  
 FWHM 76.0°  
 Efficiency 94 %  
 Peak intensity 0.6 cd/lm  
 LEDs/each optic 4  
 Light colour White  
 Required components:  
 C16784\_DAISSY-4X1-SHD-WHT



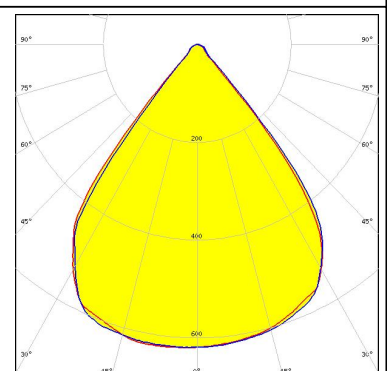
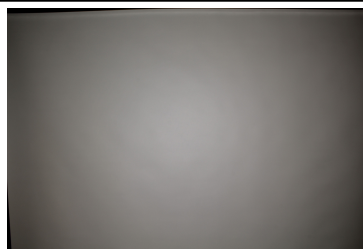
#### SAMSUNG

LED LM28xB Series  
 FWHM 76.0°  
 Efficiency 86 %  
 Peak intensity 0.6 cd/lm  
 LEDs/each optic 1  
 Light colour White  
 Required components:  
 C17422\_DAISSY-4X1-SHD2-MATT


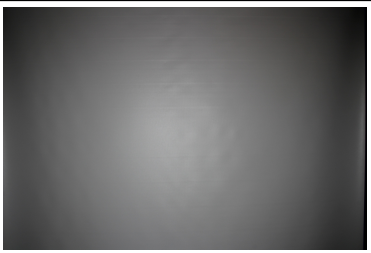
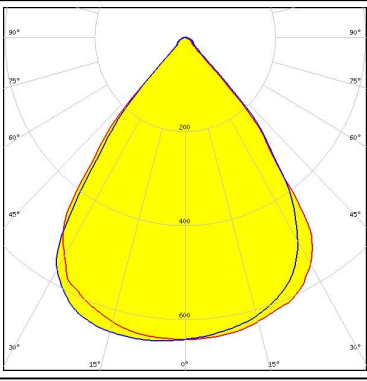


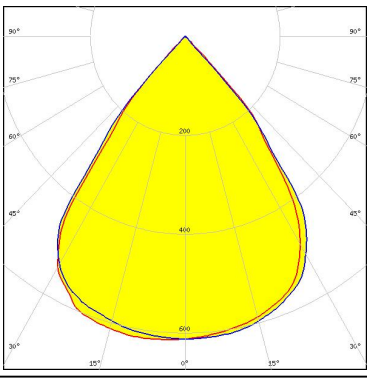


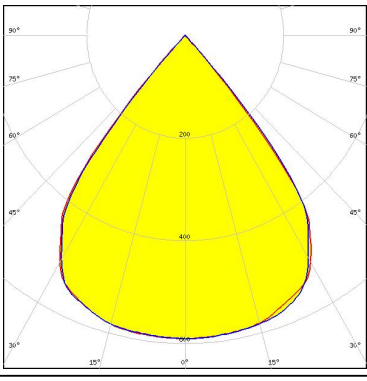


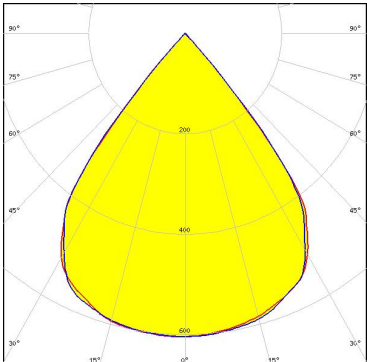


#### SAMSUNG

LED LM28xB Series  
 FWHM 77.0°  
 Efficiency 94 %  
 Peak intensity 0.6 cd/lm  
 LEDs/each optic 2  
 Light colour White  
 Required components:  
 C16784\_DAISSY-4X1-SHD-WHT


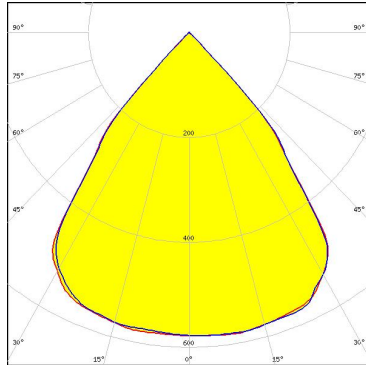
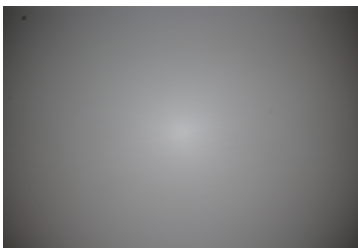
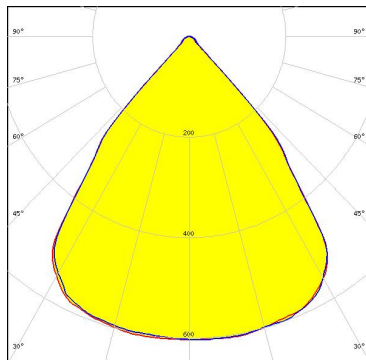

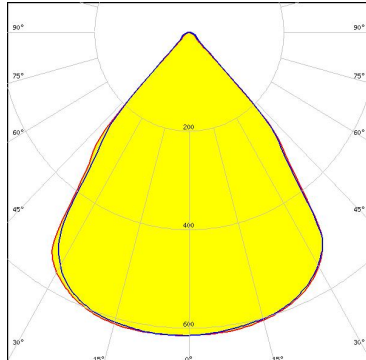
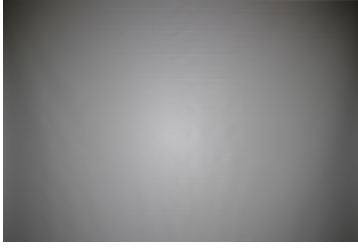
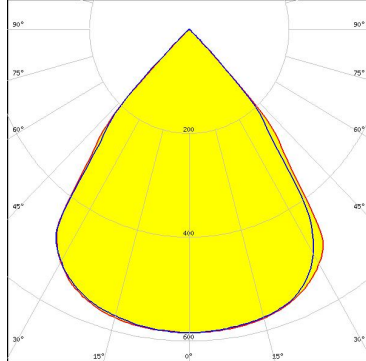


### PHOTOMETRIC DATA (MEASURED):

<p> SEoul SEMICONDUCTOR</p> <p>LED                    SEoul DC 3030 FWHM                 75.0° Efficiency            92 % Peak intensity       0.7 cd/lm LEDs/each optic    4 Light colour         Tunable White Required components: C16784_DAISY-4X1-SHD-WHT</p>		
<p> SEoul SEMICONDUCTOR</p> <p>LED                    SEoul DC 3030 FWHM                 75.0° Efficiency            83 % Peak intensity       0.6 cd/lm LEDs/each optic    4 Light colour         Tunable White Required components: C16590_DAISY-4X1-SHD</p>		
<p> SEoul SEMICONDUCTOR</p> <p>LED                    SEoul DC 3528 FWHM                 78.0° Efficiency            87 % Peak intensity       0.6 cd/lm LEDs/each optic    2 Light colour         White Required components: C16590_DAISY-4X1-SHD</p>		
<p> SEoul SEMICONDUCTOR</p> <p>LED                    SEoul DC 3528 FWHM                 77.0° Efficiency            87 % Peak intensity       0.6 cd/lm LEDs/each optic    2 Light colour         White Required components: C16590_DAISY-4X1-SHD</p>		



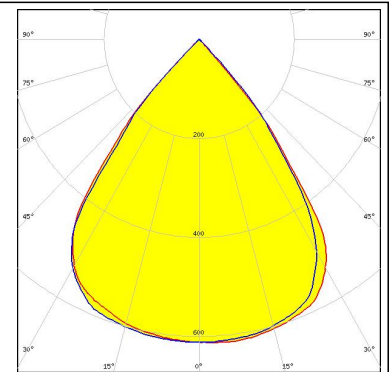
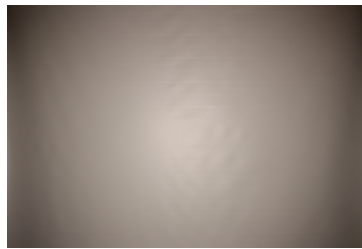
### PHOTOMETRIC DATA (MEASURED):

<p><b>TEPCOMP group</b></p> <p>LED PassivePAQ-L-0.5F35-SSA3-1.6K-840-3-DC            FWHM 79.0°            Efficiency 85 %            Peak intensity 0.6 cd/lm            LEDs/each optic 4            Light colour White            Required components:            C16590_DAISSY-4X1-SHD</p>		
<p><b>TEPCOMP group</b></p> <p>LED PassivePAQ-L-0.5F35-SSA3-1.6K-840-3-DC            FWHM 80.0°            Efficiency 94 %            Peak intensity 0.6 cd/lm            LEDs/each optic 4            Light colour White            Required components:            C16784_DAISSY-4X1-SHD-WHT</p>		
<p><b>TEPCOMP group</b></p> <p>LED PassivePAQ-L-0.5F35-SSA3-1.6K-840-3-DC            FWHM 79.0°            Efficiency 94 %            Peak intensity 0.6 cd/lm            LEDs/each optic 4            Light colour White            Required components:            C17423_DAISSY-4X1-SHD2-WHT-MATT</p>		
<p><b>TEPCOMP group</b></p> <p>LED PassivePAQ-L-0.5F35-SSA3-1.6K-840-3-DC            FWHM 80.0 + 77.0°            Efficiency 83 %            Peak intensity 0.6 cd/lm            LEDs/each optic 4            Light colour White            Required components:            C17422_DAISSY-4X1-SHD2-MATT</p>		

### PHOTOMETRIC DATA (MEASURED):

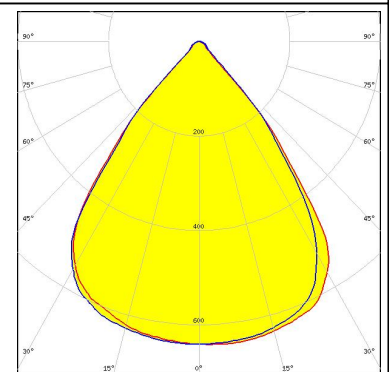
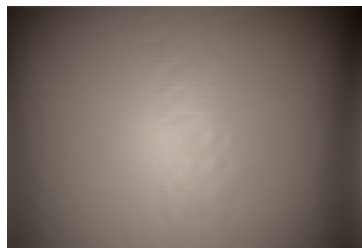
#### TRIDONIC

LED LLE 24x140mm 400lm 827-865 LVD ADV1  
 FWHM 76.0°  
 Efficiency 85 %  
 Peak intensity 0.6 cd/lm  
 LEDs/each optic 4  
 Light colour White  
 Required components:  
 C16590\_DAISSY-4X1-SHD



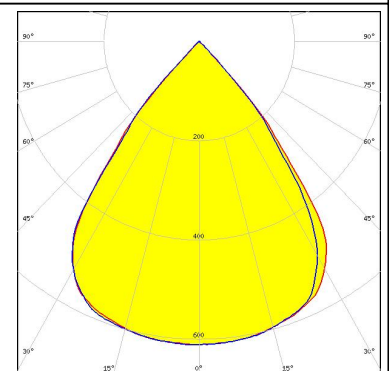
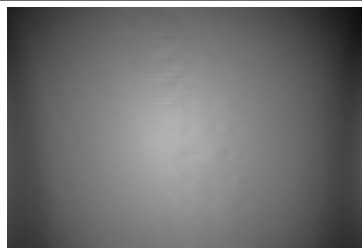
#### TRIDONIC

LED LLE 24x140mm 400lm 827-865 LVD ADV1  
 FWHM 76.0°  
 Efficiency 94 %  
 Peak intensity 0.6 cd/lm  
 LEDs/each optic 4  
 Light colour White  
 Required components:  
 C16784\_DAISSY-4X1-SHD-WHT



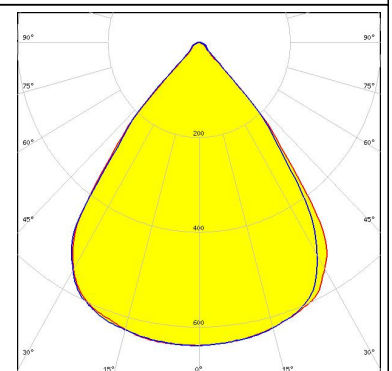
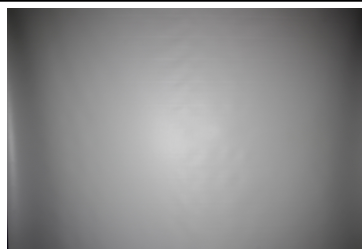
#### TRIDONIC

LED LLE 24x140mm 400lm 8x0 LVD ADV1  
 FWHM 76.0°  
 Efficiency 85 %  
 Peak intensity 0.6 cd/lm  
 LEDs/each optic 4  
 Light colour White  
 Required components:  
 C16590\_DAISSY-4X1-SHD



#### TRIDONIC

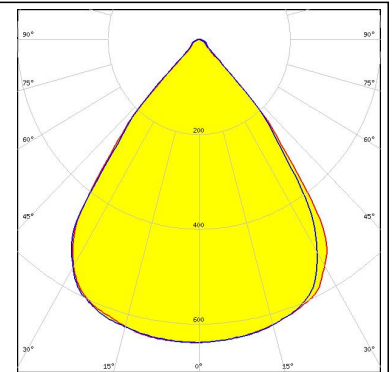
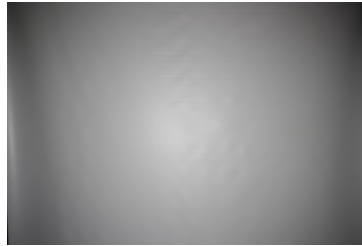
LED LLE 24x140mm 400lm 8x0 LVD ADV1  
 FWHM 77.0°  
 Efficiency 94 %  
 Peak intensity 0.6 cd/lm  
 LEDs/each optic 4  
 Light colour White  
 Required components:  
 C16784\_DAISSY-4X1-SHD-WHT



### PHOTOMETRIC DATA (MEASURED):

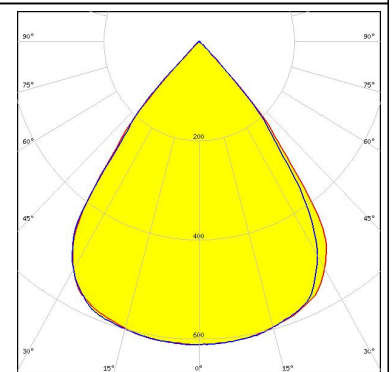
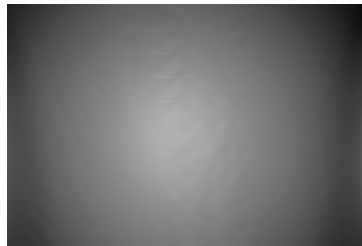
#### TRIDONIC

LED LLE 24x280mm 750lm 8x0 LVD ADV1  
FWHM 76.0°  
Efficiency 94 %  
Peak intensity 0.6 cd/lm  
LEDs/each optic 4  
Light colour White  
Required components:  
C16784\_DAISSY-4X1-SHD-WHT



#### TRIDONIC

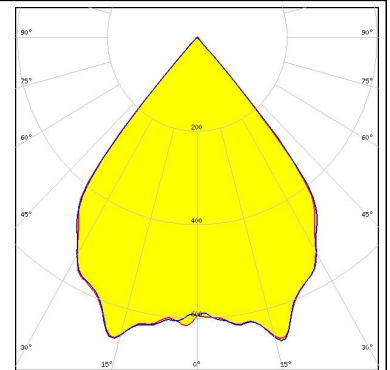
LED LLE 24x280mm 750lm 8x0 LVD ADV1  
FWHM 76.0°  
Efficiency 85 %  
Peak intensity 0.6 cd/lm  
LEDs/each optic 4  
Light colour White  
Required components:  
C16590\_DAISSY-4X1-SHD



### PHOTOMETRIC DATA (SIMULATED):

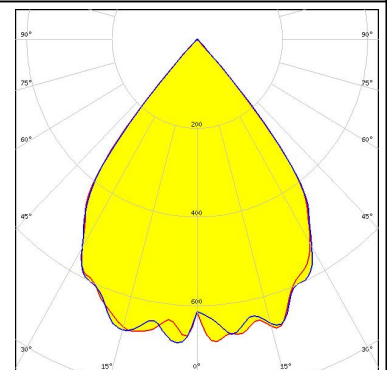
#### LUMILEDS

LED LUXEON 3535L  
 FWHM 76.0°  
 Efficiency 90 %  
 Peak intensity 0.7 cd/lm  
 LEDs/each optic 1  
 Light colour White  
 Required components:  
 C16590\_DAISY-4X1-SHD



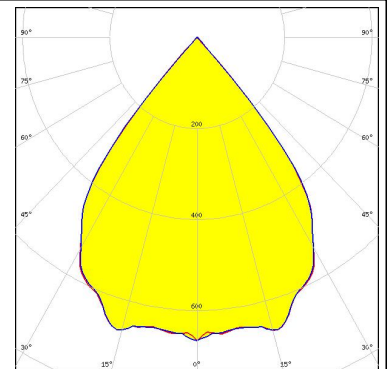
#### LUMILEDS

LED LUXEON 5050 Round LES  
 FWHM 76.0°  
 Efficiency 90 %  
 Peak intensity 0.7 cd/lm  
 LEDs/each optic 1  
 Light colour White  
 Required components:  
 C16590\_DAISY-4X1-SHD



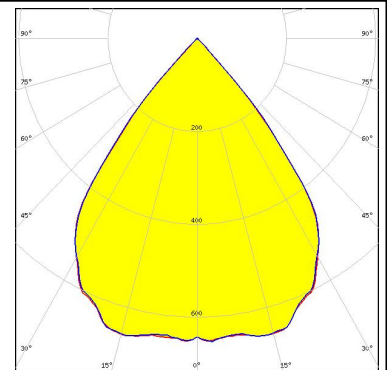
#### NICHIA

LED NF2W757G-MT (Tunable White)  
 FWHM 76.0 + 78.0°  
 Efficiency 90 %  
 Peak intensity 0.7 cd/lm  
 LEDs/each optic 2  
 Light colour Tunable White  
 Required components:  
 C16590\_DAISY-4X1-SHD



#### NICHIA

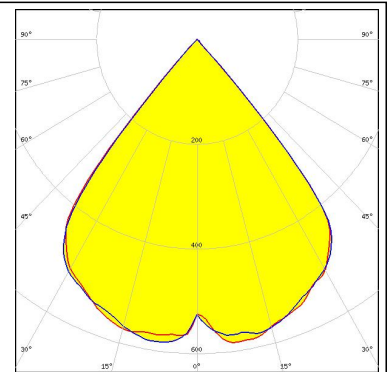
LED NF2W757G-MT (Tunable White)  
 FWHM 76.0°  
 Efficiency 90 %  
 Peak intensity 0.7 cd/lm  
 LEDs/each optic 4  
 Light colour Tunable White  
 Required components:  
 C16590\_DAISY-4X1-SHD



### PHOTOMETRIC DATA (SIMULATED):

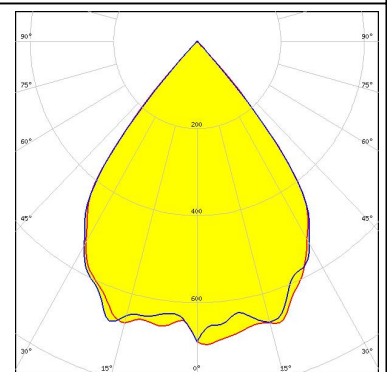
#### OSRAM Opto Semiconductors

LED Duris E 2835  
FWHM 80.0°  
Efficiency 83 %  
Peak intensity 0.6 cd/lm  
LEDs/each optic 1  
Light colour White  
Required components:  
C16590\_DAISY-4X1-SHD



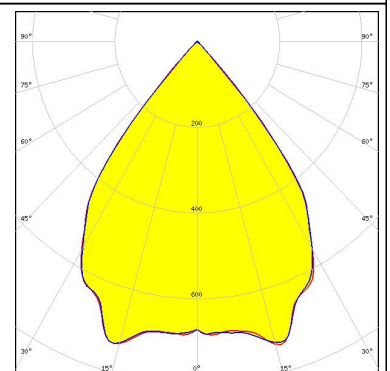
#### OSRAM Opto Semiconductors

LED Duris S8  
FWHM 76.0°  
Efficiency 90 %  
Peak intensity 0.7 cd/lm  
LEDs/each optic 1  
Light colour White  
Required components:  
C16590\_DAISY-4X1-SHD



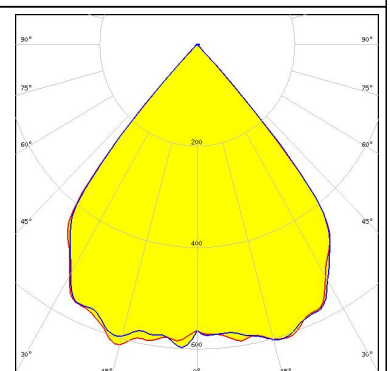
#### OSRAM Opto Semiconductors

LED Duris S8  
FWHM 76.0°  
Efficiency 95 %  
Peak intensity 0.7 cd/lm  
LEDs/each optic 1  
Light colour White  
Required components:  
C16784\_DAISY-4X1-SHD-WHT



#### SAMSUNG

LED LH351B  
FWHM 79.0°  
Efficiency 90 %  
Peak intensity 0.6 cd/lm  
LEDs/each optic 1  
Light colour White  
Required components:  
C16590\_DAISY-4X1-SHD



### GENERAL INFORMATION:

NOTE: The typical beam angle will be changed by different color, chip size and chip position tolerance. The typical total beam angle is the full angle measured where the luminous intensity is half of the peak value.

### MATERIALS:

As part of our continuous research and improvement processes, and to ensure the best possible quality and availability of our products, LEDiL reserves the right to change material grades without notice.

### PRODUCT DATA USER AGREEMENT AND DISCLAIMER:

The measured data in the provided downloadable LEDiL Product Datasheets and Mechanical 2D-Drawings is rounded and provided as reference for planning. LEDiL Oy's optical specifications have been verified by conducting performance testing of the products in accordance with the company's quality system. The reported data are averaged results of multiple measurements with typical variation. LEDiL Oy reserves the right to without prior notification make changes and improvements to its products.

LEDiL Oy assumes neither warranty, nor guarantee nor any other liability of any kind for the contents and correctness of the provided data. The provided data has been generated with highest diligence but the provided data may in reality not represent the complete possible variation range of all intrinsic parameters. Therefore, in certain cases a deviation from the provided data could occur.

LEDiL Oy reserves the right to undertake technical changes of its products without further notification which could lead to changes in the provided data. LEDiL Oy assumes no liability of any kind for the possible deviation from any provided data or any other damage resulting from the usage of the provided data.

The user agrees to this disclaimer and user agreement with the download or usage of the provided files.

#### LEDiL Oy

Joensuunkatu 13  
FI-24240 SALO  
Finland

#### LEDiL Inc.

228 West Page Street  
Suite D  
Sycamore IL 60178  
USA

#### Local sales and technical support

[www.ledil.com/  
where\\_to\\_buy](http://www.ledil.com/where_to_buy)

#### Shipping locations

Salo, Finland  
Hong Kong, China

#### Distribution Partners

[www.ledil.com/  
where\\_to\\_buy](http://www.ledil.com/where_to_buy)

Компания «Life Electronics» занимается поставками электронных компонентов импортного и отечественного производства от производителей и со складов крупных дистрибьюторов Европы, Америки и Азии.

С конца 2013 года компания активно расширяет линейку поставок компонентов по направлению коаксиальный кабель, кварцевые генераторы и конденсаторы (керамические, пленочные, электролитические), за счёт заключения дистрибьюторских договоров

Мы предлагаем:

- Конкурентоспособные цены и скидки постоянным клиентам.
- Специальные условия для постоянных клиентов.
- Подбор аналогов.
- Поставку компонентов в любых объемах, удовлетворяющих вашим потребностям.
- Приемлемые сроки поставки, возможна ускоренная поставка.
- Доставку товара в любую точку России и стран СНГ.
- Комплексную поставку.
- Работу по проектам и поставку образцов.
- Формирование склада под заказчика.
- Сертификаты соответствия на поставляемую продукцию (по желанию клиента).
- Тестирование поставляемой продукции.
- Поставку компонентов, требующих военную и космическую приемку.
- Входной контроль качества.
- Наличие сертификата ISO.

В составе нашей компании организован Конструкторский отдел, призванный помогать разработчикам, и инженерам.

Конструкторский отдел помогает осуществить:

- Регистрацию проекта у производителя компонентов.
- Техническую поддержку проекта.
- Защиту от снятия компонента с производства.
- Оценку стоимости проекта по компонентам.
- Изготовление тестовой платы монтаж и пусконаладочные работы.



Тел: +7 (812) 336 43 04 (многоканальный)

Email: [org@lifeelectronics.ru](mailto:org@lifeelectronics.ru)