

**PLEASE CHECK WWW.MOLEX.COM FOR LATEST PART INFORMATION**

**Part Number:** [0877153908](#)  
**Status:** **Active**  
**Overview:**  
**Description:** 1.00mm (.039") Pitch, PCI Express\* Connector, 230 Circuits, Nylon 4/6 Glass-filled, Black Housing, Phosphor Bronze, 0.38µm (15µ") Gold (Au) Plating, with Plastic Pegs, 2.54mm (.100") Solderetail

**Agency Certification**

CSA LR19980

**General**

Product Family Edge Card Connectors  
 Series 87715  
 Component Type Edgecard to PCB  
 Overview pci\_express\_card\_edge\_connector  
 Product Name PCI Express\*

**Physical**

Circuits (Loaded) 230  
 Circuits (maximum) 230  
 Circuits Detail All Signal  
 Durability (mating cycles max) 50  
 Entry Angle Vertical (Top Entry)  
 Flammability 94V-0  
 Keying to Mating Part Yes  
 Material - Plating Mating Gold  
 Material - Plating Termination Tin-Lead  
 PC Tail Length (in) 0.100 In  
 PC Tail Length (mm) 2.54 mm  
 PCB Locator Yes  
 PCB Retention Yes  
 PCB Thickness Recommended (in) 0.062 In  
 PCB Thickness Recommended (mm) 1.60 mm  
 Packaging Type Tray  
 Pitch - Mating Interface (in) 0.039 In  
 Pitch - Mating Interface (mm) 1.00 mm  
 Pitch - Term. Interface (in) 0.039 In  
 Pitch - Term. Interface (mm) 1.00 mm  
 Plating min: Mating (µin) 15  
 Plating min: Mating (µm) 0.38  
 Polarized to Mating Part Yes  
 Temperature Range - Operating 65°C  
 Termination Interface: Style Through Hole

**Electrical**

Current - Maximum per Contact 1.1A  
 Voltage - Maximum 50V AC (RMS)/DC

**Solder Process Data**

Lead-free Process Capability Wave Capable (TH only)  
 Process Temperature max. C 260

**Material Info**

**Reference - Drawing Numbers**

Packaging Specification PK-87715-202  
 Product Specification PS-87715-202

**EU RoHS**

**ELV and RoHS  
 Compliant  
 REACH SVHC  
 Contains SVHC: No  
 Halogen-Free  
 Status**

**China RoHS**



**Not Halogen-Free**

**Need more information on product environmental compliance?**

Email [productcompliance@molex.com](mailto:productcompliance@molex.com)  
 For a multiple part number RoHS Certificate of Compliance, [click here](#)

Please visit the [Contact Us](#) section for any non-product compliance questions.

**Search Parts in this Series**

87715Series

**Mates With**

PCI Express Card

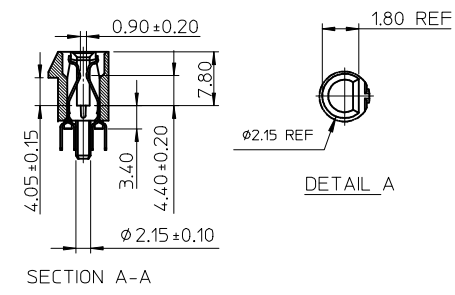
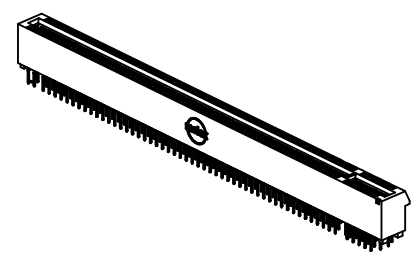
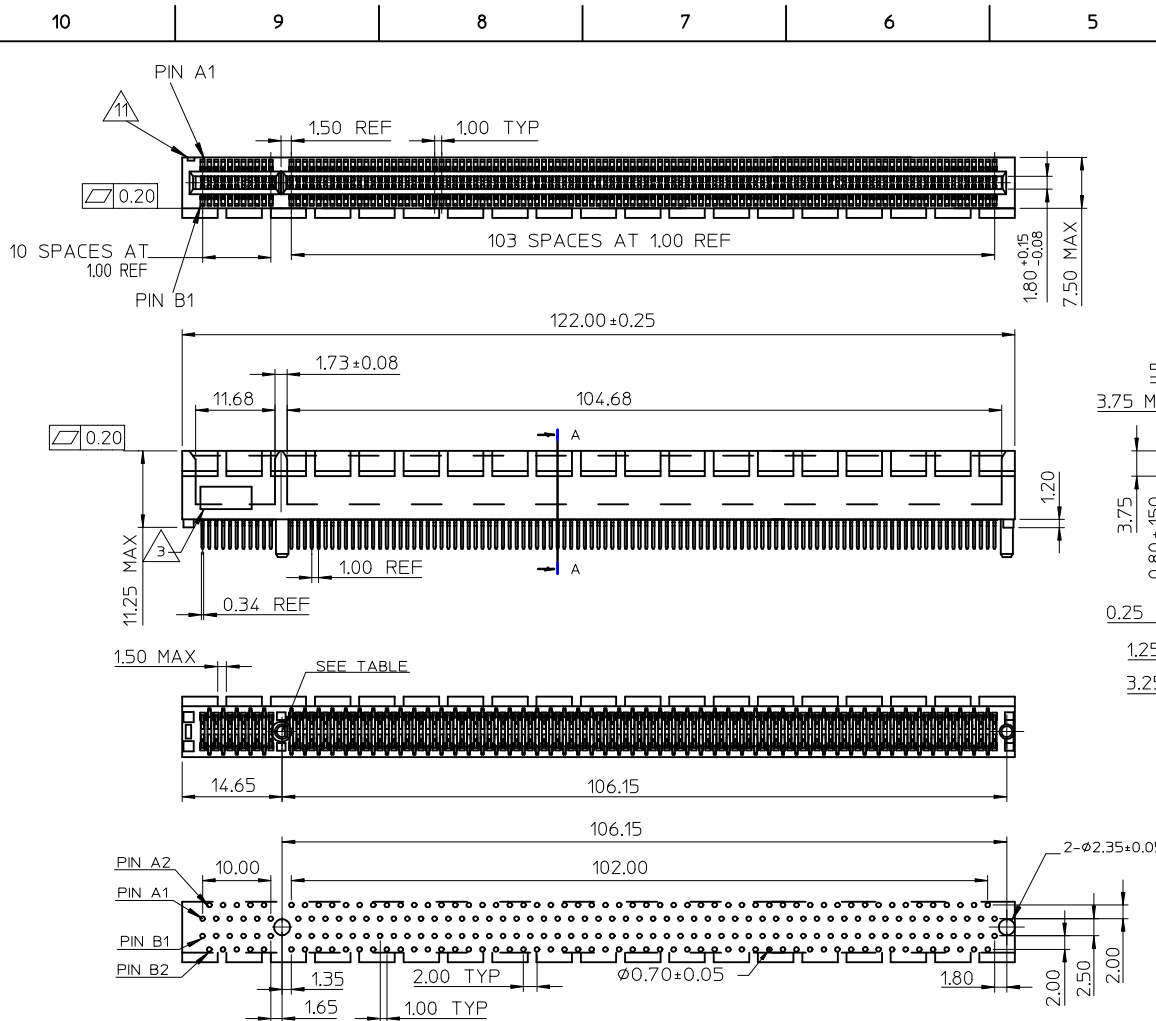
Sales Drawing  
Test Summary

SD-87715-202  
TS-87715-202

\* PCI Express is a registered trademark of PCI-SIG®

This document was generated on 06/04/2010

**PLEASE CHECK [WWW.MOLEX.COM](http://WWW.MOLEX.COM) FOR LATEST PART INFORMATION**



- NOTES:
- 1.MATERIALS:  
1-1.HOUSING:SEE TABLE GLASS FIBER FILLED UL94V-0  
COLOR:SEE TABLE  
1-2.CONTACT:SEE TABLE
  - 2.PLATING:  
2-1.CONTACT AREA: GOLD, THICKNESS : SEE TABLE  
2-2.SOLDER TAIL: 100 MICROINCH MIN TIN  
2-3.UNDER PLATING: 50 MICROINCH MIN NICKEL OVERALL
  - 3.DATE CODE:TO BE PRINTED
  - 4.PRODUCT SPECIFICATION REFER TO PS-87715-200
  - 5.PACKAGE SPECIFICATION REFER TO PK-87715-202
  - 6.TEST SUMMARY:REFER TO TS-87715-202
  - 7.LEAD FREE AND RoHS COMPLIANT PRODUCT.

| MOLEX P/N  | CIRCUIT SIZE | HOUSING MATERIAL | HOUSING COLOR | TERMINAL MATERIAL | CONTACT PLATING | DIM B |
|------------|--------------|------------------|---------------|-------------------|-----------------|-------|
| 87715-3908 |              |                  |               |                   |                 | 2.54  |
| 87715-3909 | 230          | NYLON 46         | BLACK         | PHOSPHOR BROZNE   | 15 MNCH         | 3.00  |
| 87715-3999 |              |                  |               |                   | 30 MNCH         | 3.00  |

ADD P/N, NOTE 2  
 EC NO: S2010-0318  
 DRWN: JESSIECHUA 2009/10/14  
 CHKD: KSSHANITA 2009/10/14  
 APPR: NAGESHKN 2009/10/15

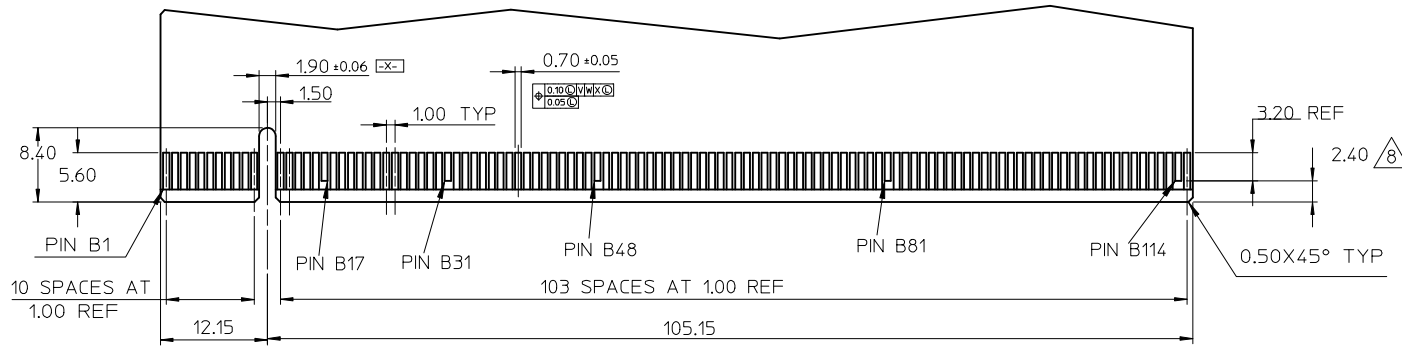
| QUALITY SYMBOLS | DESCRIPTION |
|-----------------|-------------|
| $F_A = 0$       |             |
| $F_C = 0$       |             |
| $F_P = 0$       |             |

| GENERAL TOLERANCES (UNLESS SPECIFIED) |       |
|---------------------------------------|-------|
| mm                                    | INCH  |
| 4 PLACES ± ---                        | ± --- |
| 3 PLACES ± ---                        | ± --- |
| 2 PLACES ± 0.25                       | ± --- |
| 1 PLACE ± 0.25                        | ± --- |
| ANGULAR ± 3 °                         |       |

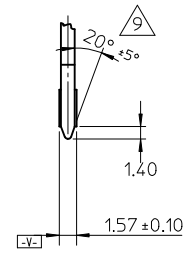
DRAFT WHERE APPLICABLE  
MUST REMAIN WITHIN DIMENSIONS

| DIMENSION STYLE |            | SCALE   | DESIGN UNITS |
|-----------------|------------|---|--------------|
| MM ONLY         |            | NTS   | METRIC       |
| DRAWN BY        | DATE       | TITLE   |              |
| TOM             | 2003/12/25 | 1.0 EDGE CARD 230 CKTS<br>VERTICAL DIP CONNECTOR<br>(LEAD FREE VERSION) |              |
| CHECKED BY      | DATE       | MOLEX INCORPORATED  |              |
| SAM SIN         | 2003/12/25 | SD-87715-202  |              |
| APPROVED BY     | DATE       | SHEET NO.   |              |
| WLISON          | 2003/12/25 | 1 OF 2  |              |
| MATERIAL NO.    | SEE TABLE  | DOCUMENT NO.  |              |

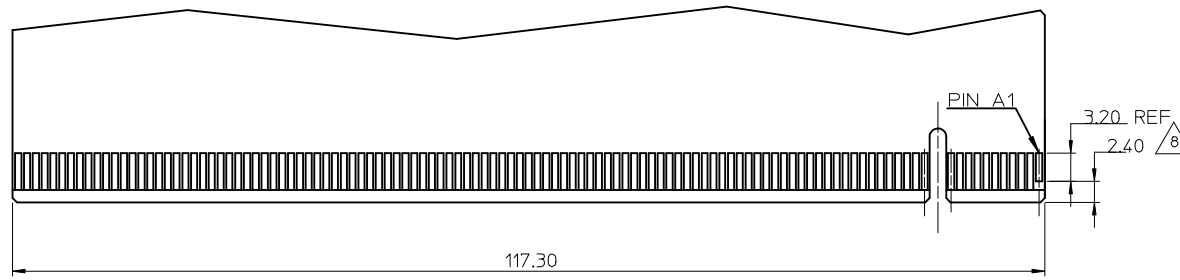
THIS DRAWING CONTAINS INFORMATION THAT IS PROPRIETARY TO MOLEX INCORPORATED AND SHOULD NOT BE USED WITHOUT WRITTEN PERMISSION



DAUGHTER CARD  
PRIMARY (COMPONENT) SIDE



ACROSS PADS



DAUGHTER CARD  
SECONDARY (SOLDER) SIDE

I/O PANEL DIRECTION

NOTE:

- NO TIE BAR PERMITTED FROM CARD EDGE TO LEADING EDGE OF PAD FOR PIN A1, B17, B31, B48, B81, B114
- CHAMFER EDGES MUST BE FREE OF CUTTING BURRS.
- 10. THE MATED CARD COMPLY WITH PCI EXPRESS CARD REV 1.0 STANDARD
- PIN 1 IDENTIFIER

|   |  |                                       |             |   |  |              |   |  |
|---|--|---------------------------------------|-------------|---|--|--------------|---|--|
| ADD P/N, NOTE 2<br>EC NO: S2010-0318<br>DRWN: JESSIECHUA 2009/10/14<br>CHKD: KSSHANITA 2009/10/14<br>APPR: NAGESHKIN 2009/10/15 | QUALITY SYMBOLS                                      | GENERAL TOLERANCES (UNLESS SPECIFIED) |             | DIMENSION STYLE   | SCALE  | DESIGN UNITS | THIRD ANGLE PROJECTION  |  |
|   | $F_A=0$  | mm                                    | INCH        | MM ONLY   | NTS  | METRIC       |   |  |
|   | $F_C=0$  | 4 PLACES ± ---                        | ± ---       | DRAWN BY  | DATE   | TITLE        | 1.0 EDGE CARD 230 CKTS<br>VERTICAL DIP CONNECTOR<br>(LEAD FREE VERSION) |  |
|   | $F_P=0$  | 3 PLACES ± ---                        | ± ---       | TOM   | 2003/12/25                                       |              |   |  |
|   | 2 PLACES ± 0.25                                      | ± ---                                 | CHECKED BY  | DATE  | MOLEX INCORPORATED                               |              |   |  |
|   | 1 PLACE ± 0.25                                       | ± ---                                 | SAM SIN     | 2003/12/25  |  |              |   |  |
|   | ANGULAR ± 3 °  |                                       | APPROVED BY | DATE  | MATERIAL NO. SD-87715-202<br>DOCUMENT NO. 2 OF 2 |              |   |  |
|   | DRAFT WHERE APPLICABLE MUST REMAIN WITHIN DIMENSIONS |                                       | WLISON      | 2003/12/25  |  |              |   |  |
| REV   | DESCRIPTION  | SIZE                                  |             | THIS DRAWING CONTAINS INFORMATION THAT IS PROPRIETARY TO MOLEX INCORPORATED AND SHOULD NOT BE USED WITHOUT WRITTEN PERMISSION |  |              |   |  |
| D1  |  | A3                                    |             |   |  |              |   |  |

Компания «Life Electronics» занимается поставками электронных компонентов импортного и отечественного производства от производителей и со складов крупных дистрибьюторов Европы, Америки и Азии.

С конца 2013 года компания активно расширяет линейку поставок компонентов по направлению коаксиальный кабель, кварцевые генераторы и конденсаторы (керамические, пленочные, электролитические), за счёт заключения дистрибьюторских договоров

Мы предлагаем:

- Конкурентоспособные цены и скидки постоянным клиентам.
- Специальные условия для постоянных клиентов.
- Подбор аналогов.
- Поставку компонентов в любых объемах, удовлетворяющих вашим потребностям.
- Приемлемые сроки поставки, возможна ускоренная поставка.
- Доставку товара в любую точку России и стран СНГ.
- Комплексную поставку.
- Работу по проектам и поставку образцов.
- Формирование склада под заказчика.
- Сертификаты соответствия на поставляемую продукцию (по желанию клиента).
- Тестирование поставляемой продукции.
- Поставку компонентов, требующих военную и космическую приемку.
- Входной контроль качества.
- Наличие сертификата ISO.

В составе нашей компании организован Конструкторский отдел, призванный помогать разработчикам, и инженерам.

Конструкторский отдел помогает осуществить:

- Регистрацию проекта у производителя компонентов.
- Техническую поддержку проекта.
- Защиту от снятия компонента с производства.
- Оценку стоимости проекта по компонентам.
- Изготовление тестовой платы монтаж и пусконаладочные работы.



Тел: +7 (812) 336 43 04 (многоканальный)  
Email: [org@lifeelectronics.ru](mailto:org@lifeelectronics.ru)