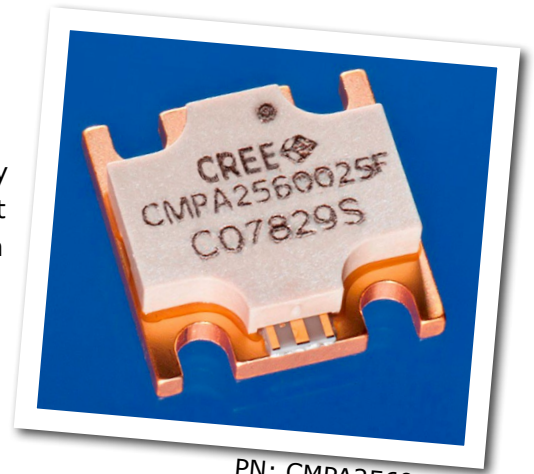


CPMA2560025F

25 W, 2500 - 6000 MHz, GaN MMIC Power Amplifier

Cree's CPMA2560025F is a gallium nitride (GaN) High Electron Mobility Transistor (HEMT) based monolithic microwave integrated circuit (MMIC). GaN has superior properties compared to silicon or gallium arsenide, including higher breakdown voltage, higher saturated electron drift velocity and higher thermal conductivity. GaN HEMTs also offer greater power density and wider bandwidths compared to Si and GaAs transistors. This MMIC contains a two-stage reactively matched amplifier enabling very wide bandwidths to be achieved in a small footprint screw-down package featuring a Copper-Tungsten heat-sink.



PN: CPMA2560025F
Package Type: 780019

Typical Performance Over 2.5-6.0 GHz ($T_c = 25^\circ\text{C}$)

Parameter	2.5 GHz	4.0 GHz	6.0 GHz	Units
Gain	27.5	24.3	23.1	dB
Saturated Output Power, P_{SAT}^1	35.8	37.5	25.6	W
Power Gain @ $P_{OUT} 43\text{ dBm}$	23.1	20.9	16.3	dB
PAE @ $P_{OUT} 43\text{ dBm}$	31.5	32.8	30.7	%

Note¹: P_{SAT} is defined as the RF output power where the device starts to draw positive gate current in the range of 7-13 mA.

Features

- 24 dB Small Signal Gain
- 25 W Typical P_{SAT}
- Operation up to 28 V
- High Breakdown Voltage
- High Temperature Operation

Applications

- Ultra Broadband Amplifiers
- Fiber Drivers
- Test Instrumentation
- EMC Amplifier Drivers

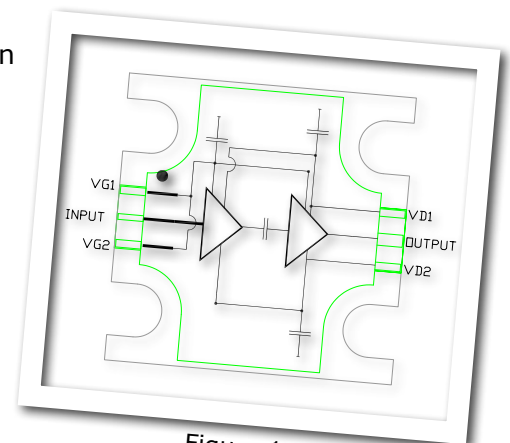


Figure 1.



Absolute Maximum Ratings (not simultaneous) at 25 °C

Parameter	Symbol	Rating	Units
Drain-source Voltage	V_{DSS}	84	VDC
Gate-source Voltage	V_{GS}	-10, +2	VDC
Storage Temperature	T_{STG}	-65, +150	°C
Operating Junction Temperature	T_J	225	°C
Forward Gate Current	I_G	13	mA
Screw Torque	T	40	in-oz
Thermal Resistance, Junction to Case	$R_{\theta JC}$	2.5	°C/W

Electrical Characteristics (Frequency = 2.5 GHz to 6.0 GHz unless otherwise stated; $T_c = 25^\circ\text{C}$)

Characteristics	Symbol	Min.	Typ.	Max.	Units	Conditions
DC Characteristics						
Gate Threshold Voltage	$V_{(GS)TH}$	-3.8	-3.0	-2.3	V	$V_{DS} = 10\text{ V}, I_D = 20\text{ mA}$
Gate Quiescent Voltage	$V_{(GS)Q}$	-	-2.7	-	VDC	$V_{DD} = 28\text{ V}, I_D = 1200\text{ mA}$
Drain-Source Breakdown Voltage	V_{BD}	84	100	-	V	$V_{GS} = -8\text{ V}, I_D = 20\text{ mA}$
Saturated Drain Current ¹	I_{DC}	8.0	9.7	-	A	$V_{DS} = 6.0\text{ V}, V_{GS} = 2.0\text{ V}$
RF Characteristics²						
Small Signal Gain	S21	19.5	24	-	dB	$V_{DD} = 28\text{ V}, I_D = 1200\text{ mA}$
Input Return Loss	S11	-	-8	-5	dB	$V_{DD} = 28\text{ V}, I_D = 1200\text{ mA}$
Output Return Loss	S22	-	-8	-3	dB	$V_{DD} = 28\text{ V}, I_D = 1200\text{ mA}$
Power Output ₁	P_{OUT}	22.0	30	-	W	$V_{DD} = 28\text{ V}, I_D = 1200\text{ mA}, P_{IN} = 26\text{ dBm}, \text{Freq} = 4.0\text{ GHz}$
Power Output ₂	P_{OUT}	12.5	17	-	W	$V_{DD} = 28\text{ V}, I_D = 1200\text{ mA}, P_{IN} = 26\text{ dBm}, \text{Freq} = 5.0\text{ GHz}$
Power Output ₃	P_{OUT}	15.5	20	-	W	$V_{DD} = 28\text{ V}, I_D = 1200\text{ mA}, P_{IN} = 26\text{ dBm}, \text{Freq} = 6.0\text{ GHz}$
Power Added Efficiency ₁	PAE	34	40	-	%	$V_{DD} = 28\text{ V}, I_D = 1200\text{ mA}, P_{IN} = 26\text{ dBm}, \text{Freq} = 4.0\text{ GHz}$
Power Added Efficiency ₂	PAE	20	26	-	%	$V_{DD} = 28\text{ V}, I_D = 1200\text{ mA}, P_{IN} = 26\text{ dBm}, \text{Freq} = 5.0\text{ GHz}$
Power Added Efficiency ₃	PAE	24	30	-	%	$V_{DD} = 28\text{ V}, I_D = 1200\text{ mA}, P_{IN} = 26\text{ dBm}, \text{Freq} = 6.0\text{ GHz}$
Power Gain ₁	G_p	17.5	18.8	-	dB	$V_{DD} = 28\text{ V}, I_D = 1200\text{ mA}, P_{IN} = 26\text{ dBm}, \text{Freq} = 4.0\text{ GHz}$
Power Gain ₂	G_p	15.0	16.3	-	dB	$V_{DD} = 28\text{ V}, I_D = 1200\text{ mA}, P_{IN} = 26\text{ dBm}, \text{Freq} = 5.0\text{ GHz}$
Power Gain ₃	G_p	16.0	17.0	-	dB	$V_{DD} = 28\text{ V}, I_D = 1200\text{ mA}, P_{IN} = 26\text{ dBm}, \text{Freq} = 6.0\text{ GHz}$
Output Mismatch Stress	VSWR	-	-	5 : 1	Ψ	No damage at all phase angles, $V_{DD} = 28\text{ V}, I_{DQ} = 1200\text{ mA}, P_{IN} = 26\text{ dBm}$

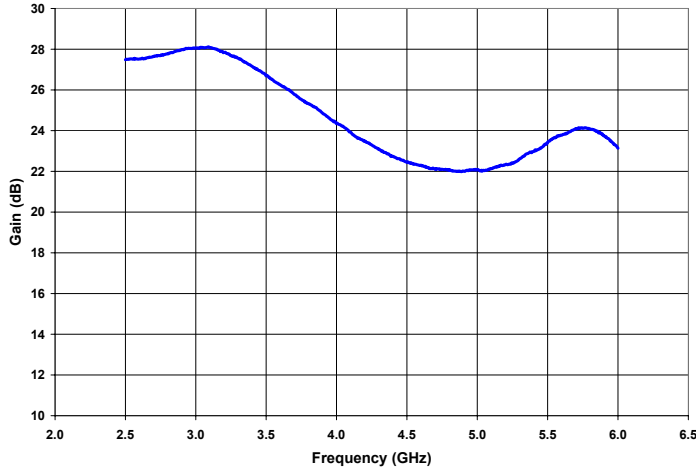
Notes:

¹ Scaled from PCM data.

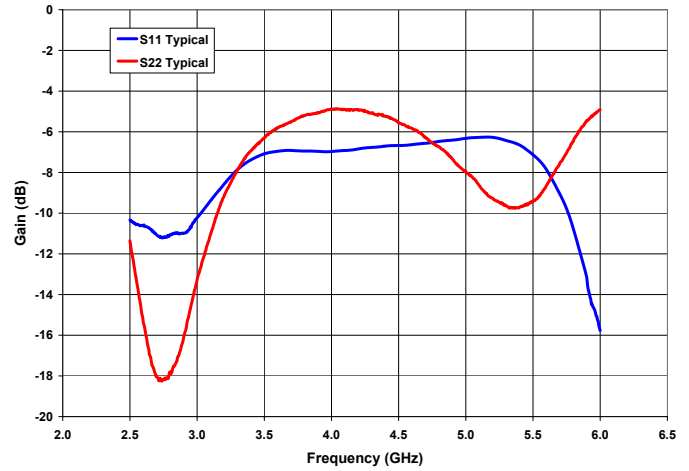
² All data CW tested in CMPA2560025F-TB.

Typical Performance

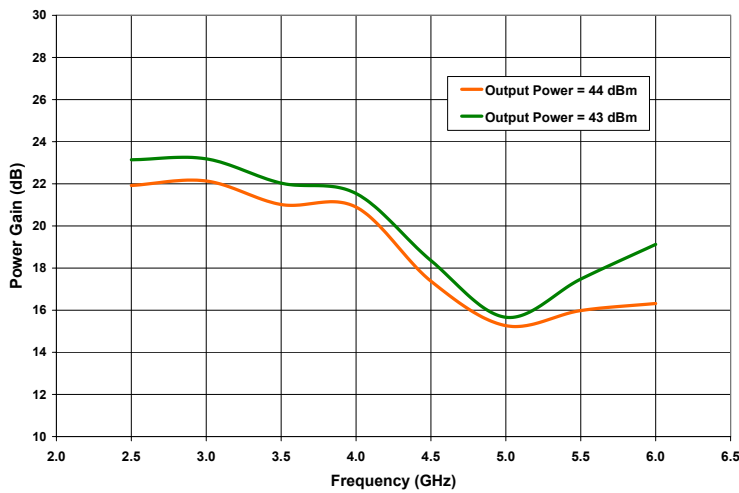
Small Signal Gain vs Frequency



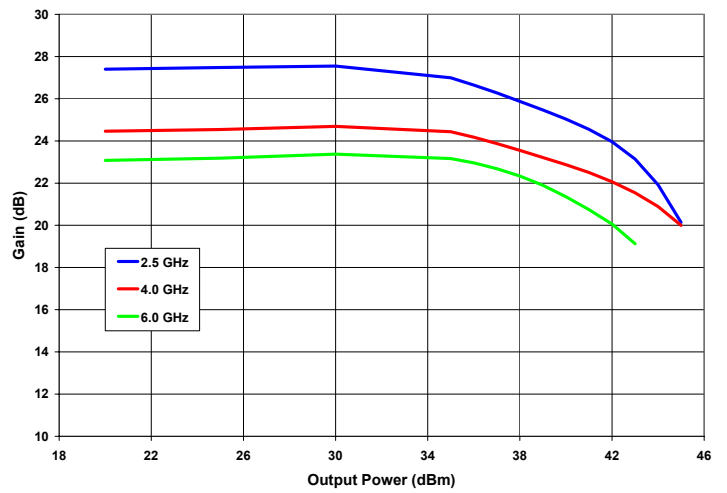
Input & Output Return Losses vs Frequency



Power Gain vs Frequency



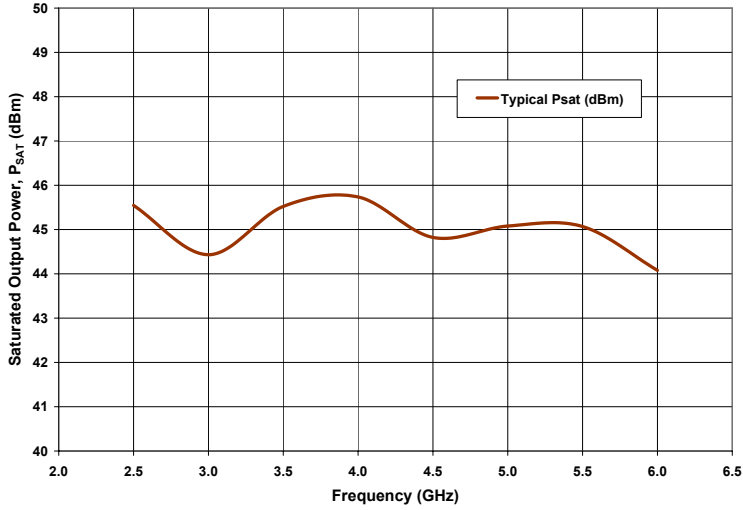
Gain vs Output Power as a Function of Frequency





Typical Performance

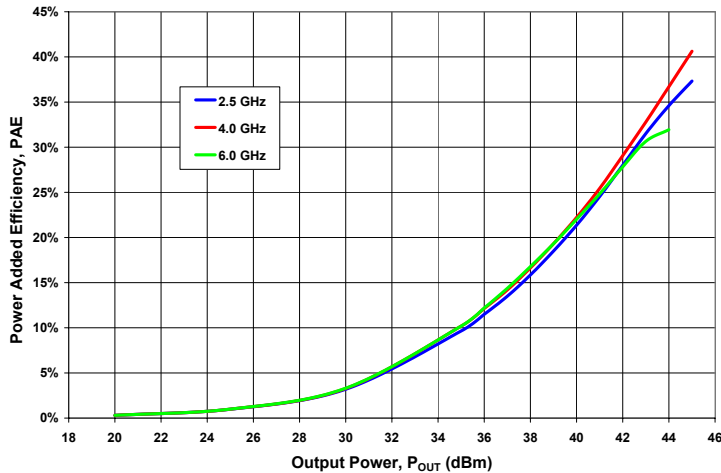
Saturated Output Power Performance (P_{SAT}) vs Frequency



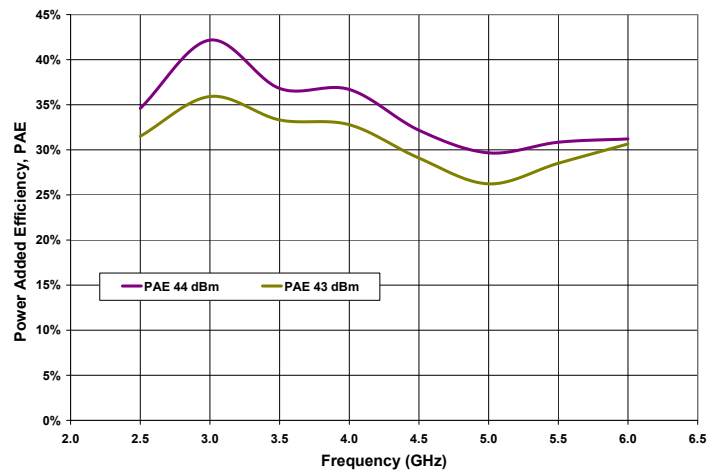
Frequency (GHz)	P_{SAT} (dBm)	P_{SAT} (W)
2.5	45.54	35.8
3.0	44.43	27.7
3.5	45.52	35.7
4.0	45.74	37.5
4.5	44.82	30.4
5.0	45.08	32.2
5.5	45.07	32.1
6.0	44.08	25.6

Note: P_{SAT} is defined as the RF output power where the device starts to draw positive gate current in the range of 7-13 mA.

Power Added Efficiency vs Output Power as a Function of Frequency

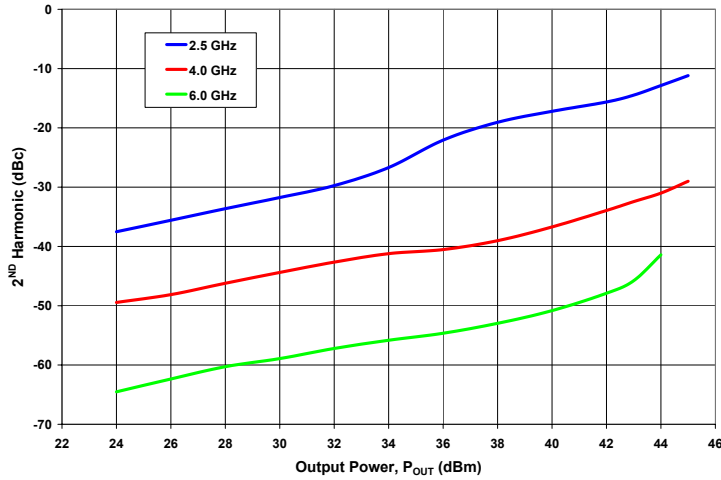


PAE at 43 dBm and 44 dBm Output Power vs Frequency

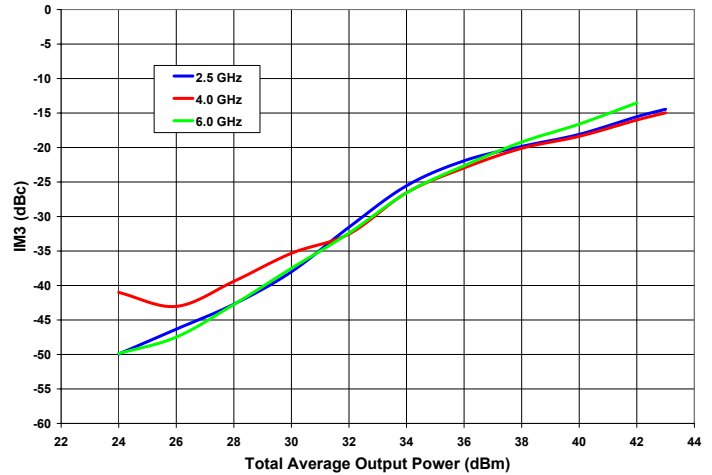


Typical Performance

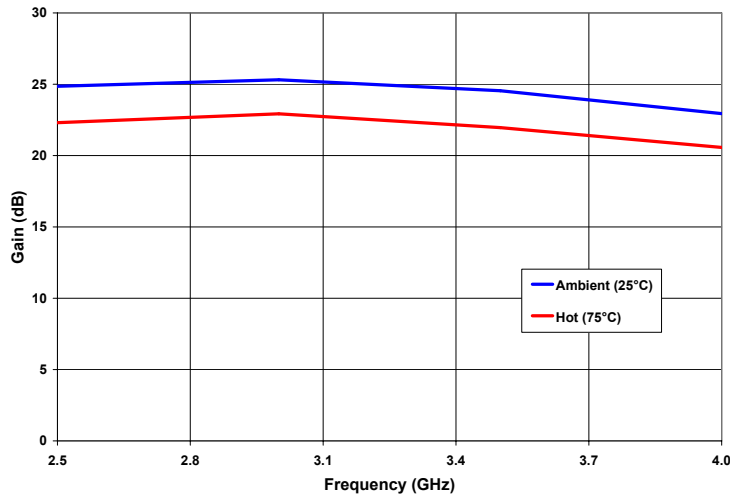
2ND Harmonic vs Output Power as a Function of Frequency



IM3 vs Total Average Power as a Function of Frequency



Gain at P_{OUT} of 40 dBm at 25°C & 75°C vs Frequency



Note: The temperature coefficient is -0.05 dB/°C



General Device Information

The CMPA2560025F is a two stage GaN HEMT MMIC Power Amplifier, which operates between 2.5- 6.0 GHz. The amplifier typically provides 25 dB of small signal gain and 25 W saturated output power with an associated power added efficiency of better than 30 %. The wideband amplifier's input and output are internally matched to 50 Ohm. The amplifier requires bias from dedicated ports. The RF-input and output both require an external DC-block. DC voltage should not be applied to the RF output pin due to the internal matching elements. The two gate pins, G1 and G2, are internally connected so it is sufficient to apply bias to only one of them. The drain pins, D1 and D2, should both be connected to the drain supply. The component has internal DC-decoupling on the gate and drain pins, 1840pF and 920pF respectively. The test fixture also provides extra decoupling capacitors on all supply lines. Details of these components can be found on the bill of materials.

The CMPA2560025F is provided in a lead-less package format. The input and output connections are gold plated to enable gold bond wire attach at the next level assembly.

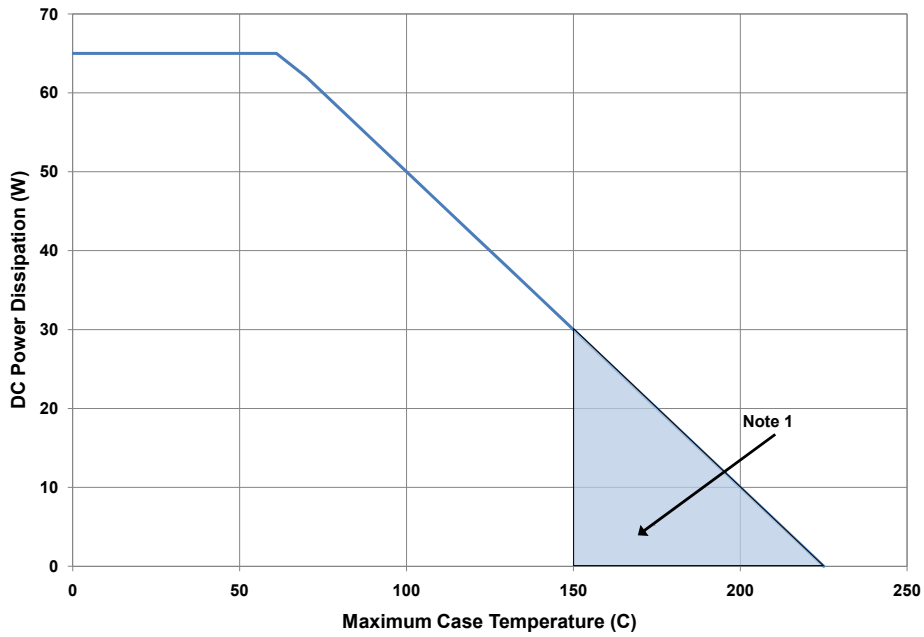
The measurements in this data sheet were taken on devices wire-bonded to the test fixture with 2 mil gold bond wires. All losses associated with the test fixture are included in the measurements.

Electrostatic Discharge (ESD) Classifications

Parameter	Symbol	Class	Test Methodology
Human Body Model	HBM	1A (> 250 V)	JEDEC JESD22 A114-D
Charge Device Model	CDM	II (200 < 500 V)	JEDEC JESD22 C101-C

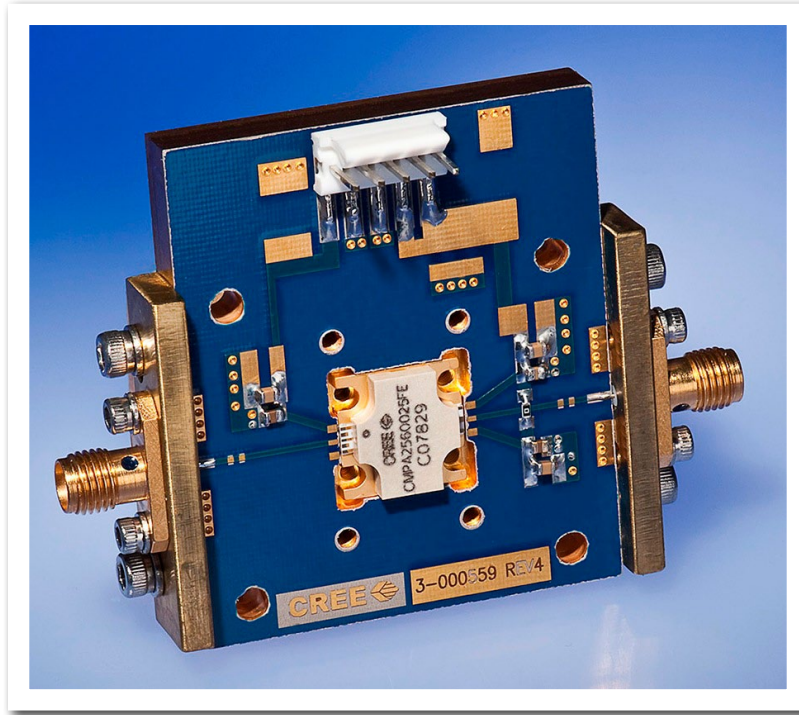


CPA2560025F CW Power Dissipation De-rating Curve

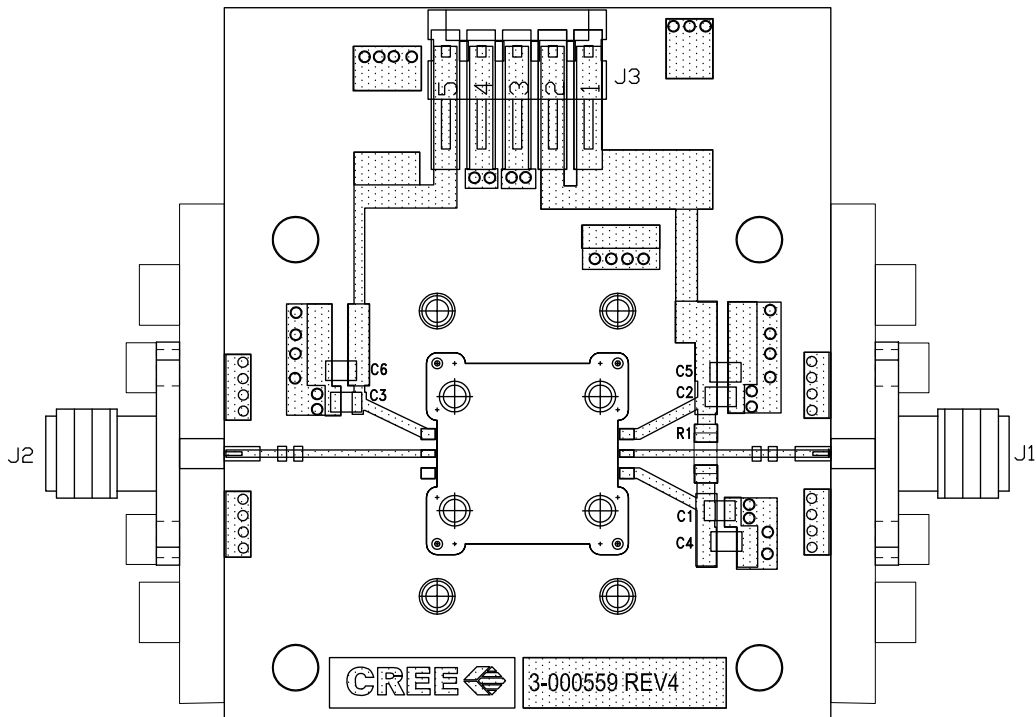


Note 1. Area exceeds Maximum Case Operating Temperature (See Page 2).

CMPA2560025F-TB Demonstration Amplifier Circuit



CMPA2560025F-TB Demonstration Amplifier Circuit Outline



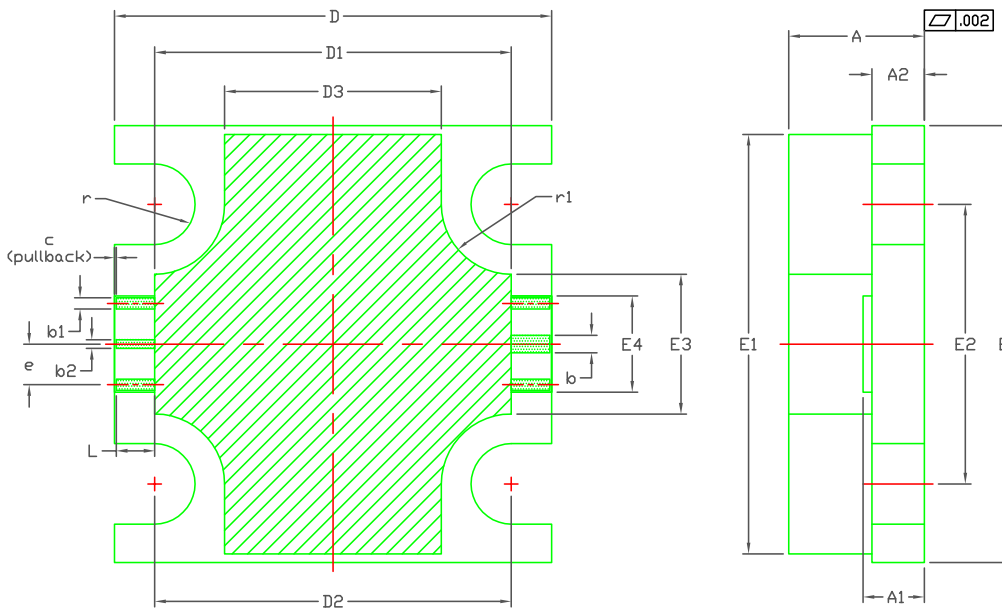
CPA2560025F-TB Demonstration Amplifier Circuit Bill of Materials

Designator	Description	Qty
J1,J2	CONNECTOR, SMA, AMP1052901-1	2
J3	HEADER, RT. PLZ. 1, CEN LK, 5 POS	1
C1,C2,C3	CAP, 2400 pF, BROADBAND BLOCK, C08BL242X-SUN-X0T 2	3
C4,C5,C6	CAP, 0.1 UF, +/- 10 % , 0805	3
R1	RES, 0 OHM, 1206	1
-	PCB, TACONIC, RF-35-0100-CH/CH	1
Q1	CPA2560025F	1

Notes

- ¹The CPA2560025F is connected to the PCB with 2.0 mil Au bond wires.
- ²An external DC Block is required on the input and output.

Product Dimensions CPA2560025F (Package Type – 780019)



NOTES:

- DIMENSIONING AND TOLERANCING PER ANSI Y14.5M, 1982.
- CONTROLLING DIMENSION: INCH.
- ADHESIVE FROM LID MAY EXTEND A MAXIMUM OF 0.020" BEYOND EDGE OF LID.
- LID MAY BE MISALIGNED TO THE BODY OF THE PACKAGE BY A MAXIMUM OF 0.008" IN ANY DIRECTION.
- ALL PLATED SURFACES ARE NI/AU

DIM	INCHES		MILLIMETERS		NOTE
	MIN	MAX	MIN	MAX	
A	0.148	0.162	3.76	4.12	—
A1	0.066	0.076	1.67	1.93	—
A2	0.056	0.064	1.42	1.63	—
b	0.022	0.022	0.56	0.56	—
b1	0.013	0.013	0.33	0.33	x4
b2	0.010	0.010	0.25	0.25	—
c	0.002	0.002	0.05	0.05	x2
D	0.495	0.505	12.57	12.83	—
D1	0.403	0.413	10.23	10.49	—
D2	0.408	0.408	10.36	10.36	—
D3	0.243	0.253	6.17	6.43	—
E	0.495	0.505	12.57	12.83	—
E1	0.475	0.485	12.06	12.32	—
E2	0.320	0.320	8.13	8.13	—
E3	0.155	0.165	3.93	4.19	—
E4	0.105	0.115	2.66	2.92	—
e	0.046	0.046	1.17	1.17	x4
L	0.044	0.044	1.12	1.12	x6
r	R0.046	R0.046	R1.17	R1.17	x4
r1	R0.080	R0.080	R2.03	R2.03	x4



Disclaimer

Specifications are subject to change without notice. Cree, Inc. believes the information contained within this data sheet to be accurate and reliable. However, no responsibility is assumed by Cree for its use or for any infringement of patents or other rights of third parties which may result from its use. No license is granted by implication or otherwise under any patent or patent rights of Cree. Cree makes no warranty, representation or guarantee regarding the suitability of its products for any particular purpose. "Typical" parameters are the average values expected by Cree in large quantities and are provided for information purposes only. These values can and do vary in different applications, and actual performance can vary over time. All operating parameters should be validated by customer's technical experts for each application. Cree products are not designed, intended, or authorized for use as components in applications intended for surgical implant into the body or to support or sustain life, in applications in which the failure of the Cree product could result in personal injury or death, or in applications for the planning, construction, maintenance or direct operation of a nuclear facility. CREE and the CREE logo are registered trademarks of Cree, Inc.

For more information, please contact:

Cree, Inc.
4600 Silicon Drive
Durham, North Carolina, USA 27703
www.cree.com/wireless

Sarah Miller
Marketing & Export
Cree, RF Components
1.919.407.5302

Ryan Baker
Marketing
Cree, RF Components
1.919.407.7816

Tom Dekker
Sales Director
Cree, RF Components
1.919.407.5639

Компания «Life Electronics» занимается поставками электронных компонентов импортного и отечественного производства от производителей и со складов крупных дистрибьюторов Европы, Америки и Азии.

С конца 2013 года компания активно расширяет линейку поставок компонентов по направлению коаксиальный кабель, кварцевые генераторы и конденсаторы (керамические, пленочные, электролитические), за счёт заключения дистрибьюторских договоров

Мы предлагаем:

- Конкурентоспособные цены и скидки постоянным клиентам.
- Специальные условия для постоянных клиентов.
- Подбор аналогов.
- Поставку компонентов в любых объемах, удовлетворяющих вашим потребностям.
- Приемлемые сроки поставки, возможна ускоренная поставка.
- Доставку товара в любую точку России и стран СНГ.
- Комплексную поставку.
- Работу по проектам и поставку образцов.
- Формирование склада под заказчика.
- Сертификаты соответствия на поставляемую продукцию (по желанию клиента).
- Тестирование поставляемой продукции.
- Поставку компонентов, требующих военную и космическую приемку.
- Входной контроль качества.
- Наличие сертификата ISO.

В составе нашей компании организован Конструкторский отдел, призванный помогать разработчикам, и инженерам.

Конструкторский отдел помогает осуществить:

- Регистрацию проекта у производителя компонентов.
- Техническую поддержку проекта.
- Защиту от снятия компонента с производства.
- Оценку стоимости проекта по компонентам.
- Изготовление тестовой платы монтаж и пусконаладочные работы.



Тел: +7 (812) 336 43 04 (многоканальный)
Email: org@lifeelectronics.ru