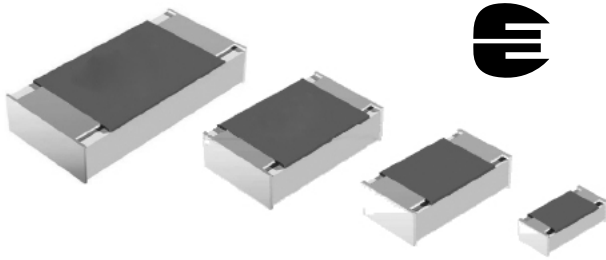


## Precision Thin Film Chip Resistors



Thin film flat chip resistors combine the proven reliability of the professional products with an advanced level of precision and stability. Therefore they are perfectly suited for applications in the fields of test and measuring equipment together with industrial and medical electronics.

### FEATURES

- Approved to EN 140401-801
- Low TCR:  $\pm 10$  ppm/K to  $\pm 25$  ppm/K
- Precision tolerance of resistance:  $\pm 0.1$  % and  $\pm 0.25$  %
- Superior overall stability: Class 0.1 and 0.25
- Lead (Pb)-free solder contacts
- Waste gas resistance verified by ASTM B 809
- Material categorization: For definitions of compliance please see [www.vishay.com/doc?99912](http://www.vishay.com/doc?99912)



RoHS  
COMPLIANT

### APPLICATIONS

- Automotive
- Test and measuring equipment
- Medical equipment
- Industrial equipment

| TECHNICAL SPECIFICATIONS   |  |                                       |                                      |                                       |                                      |                                       |                                      |                                       |  |
|--|--|---------------------------------------|--------------------------------------|---------------------------------------|--------------------------------------|---------------------------------------|--------------------------------------|---------------------------------------|--|
|  | MCS 0402                                       |                                       | MCT 0603                             |                                       | MCU 0805                             |                                       | MCA 1206                             |                                       |  |
| Imperial size  | 0402   |                                       | 0603                                 |                                       | 0805                                 |                                       | 1206                                 |                                       |  |
| Metric size code   | RR1005M  |                                       | RR1608M                              |                                       | RR2012M                              |                                       | RR3216M                              |                                       |  |
| Resistance range   | 100 $\Omega$ to 221 k $\Omega$                 |                                       | 39 $\Omega$ to 511 k $\Omega$        |                                       | 39 $\Omega$ to 1.5 M $\Omega$        |                                       | 39 $\Omega$ to 2 M $\Omega$          |                                       |  |
| Resistance tolerance   | $\pm 0.25$ %; $\pm 0.1$ %                      |                                       |                                      |                                       |                                      |                                       |                                      |                                       |  |
| Temperature coefficient  | $\pm 25$ ppm/K; $\pm 15$ ppm/K; $\pm 10$ ppm/K |                                       |                                      |                                       |                                      |                                       |                                      |                                       |  |
| Operation mode   | Precision                                      | Standard                              | Precision                            | Standard                              | Precision                            | Standard                              | Precision                            | Standard                              |  |
| Rated dissipation, $P_{70}$ <sup>(1)</sup>   | 0.016 W  | 0.063 W                               | 0.032 W                              | 0.1 W                                 | 0.050 W                              | 0.125 W                               | 0.1 W                                | 0.25 W                                |  |
| Operating voltage, $U_{max}$ AC/DC   | 12.5 V   | 50 V                                  | 25 V                                 | 75 V                                  | 35 V                                 | 150 V                                 | 50 V                                 | 200 V                                 |  |
| Permissible film temperature, $\vartheta_F$ max.                                     | 85 $^{\circ}$ C                                | 125 $^{\circ}$ C                      | 85 $^{\circ}$ C                      | 125 $^{\circ}$ C                      | 85 $^{\circ}$ C                      | 125 $^{\circ}$ C                      | 85 $^{\circ}$ C                      | 125 $^{\circ}$ C                      |  |
| Operating temperature range  | - 10 $^{\circ}$ C to 85 $^{\circ}$ C           | - 55 $^{\circ}$ C to 125 $^{\circ}$ C | - 10 $^{\circ}$ C to 85 $^{\circ}$ C | - 55 $^{\circ}$ C to 125 $^{\circ}$ C | - 10 $^{\circ}$ C to 85 $^{\circ}$ C | - 55 $^{\circ}$ C to 125 $^{\circ}$ C | - 10 $^{\circ}$ C to 85 $^{\circ}$ C | - 55 $^{\circ}$ C to 125 $^{\circ}$ C |  |
| Max. resistance change at $P_{70}$ for resistance range, $ \Delta R/R $ max., after: | 100 $\Omega$ to 221 k $\Omega$                 |                                       | 39 $\Omega$ to 511 k $\Omega$        |                                       | 39 $\Omega$ to 1.5 M $\Omega$        |                                       | 39 $\Omega$ to 2 M $\Omega$          |                                       |  |
| 1000 h   | $\leq 0.1$ %                                   | $\leq 0.2$ %                          | $\leq 0.1$ %                         | $\leq 0.2$ %                          | $\leq 0.1$ %                         | $\leq 0.2$ %                          | $\leq 0.05$ %                        | $\leq 0.1$ %                          |  |
| 8000 h   | $\leq 0.2$ %                                   | $\leq 0.4$ %                          | $\leq 0.2$ %                         | $\leq 0.4$ %                          | $\leq 0.2$ %                         | $\leq 0.4$ %                          | $\leq 0.1$ %                         | $\leq 0.25$ %                         |  |
| 225 000 h  | $\leq 0.5$ %                                   | $\leq 1.0$ %                          | $\leq 0.5$ %                         | $\leq 1.0$ %                          | $\leq 0.5$ %                         | $\leq 1.0$ %                          | $\leq 0.25$ %                        | $\leq 0.5$ %                          |  |
| Specified lifetime   | 225 000 h                                      |                                       | 225 000 h                            |                                       | 225 000 h                            |                                       | 225 000 h                            |                                       |  |
| Insulation voltage:  |  |                                       |                                      |                                       |                                      |                                       |                                      |                                       |  |
| 1 min; $U_{ins}$   | 75 V   |                                       | 100 V                                |                                       | 200 V                                |                                       | 300 V                                |                                       |  |
| Continuous   | 75 V   |                                       | 75 V                                 |                                       | 75 V                                 |                                       | 75 V                                 |                                       |  |
| Failure rate: FIT <sub>observed</sub>  | $\leq 0.1 \times 10^{-9}/h$                    |                                       | $\leq 0.1 \times 10^{-9}/h$          |                                       | $\leq 0.1 \times 10^{-9}/h$          |                                       | $\leq 0.1 \times 10^{-9}/h$          |                                       |  |

#### Note

<sup>(1)</sup> The power dissipation on the resistor generates a temperature rise against the local ambient, depending on the heat flow support of the printed-circuit board (thermal resistance). The rated dissipation applies only if the permitted film temperature is not exceeded.



| PART NUMBER AND PRODUCT DESCRIPTION            |   |                              |   |  |   |   |   |                             |   |                                 |   |   |   |   |   |   |   |
|--|---|------------------------------|---|--|---|---|---|-----------------------------|---|---------------------------------|---|---|---|---|---|---|---|
| Part Number: MCT06030D4641BPW00                |   |                              |   |  |   |   |   |                             |   |                                 |   |   |   |   |   |   |   |
| M  | C | T                            | 0 | 6  | 0 | 3   | 0 | D                           | 4 | 6                               | 4 | 1 | B | P | W | 0 | 0 |
| TYPE/SIZE                                      |   | VERSION                      |   | TCR  |   | RESISTANCE  |   | TOLERANCE                   |   | PACKAGING                       |   |   |   |   |   |   |   |
| MCS0402<br>MCT0603<br>MCU0805<br>MCA1206       |   | 0 = Neutral                  |   | F = ± 10 ppm/K<br>E = ± 15 ppm/K<br>D = ± 25 ppm/K |   | 3 digit value<br>1 digit multiplier   |   | B = ± 0.1 %<br>C = ± 0.25 % |   | P1<br>P5<br>PW<br>E1<br>E0      |   |   |   |   |   |   |   |
|  |   |                              |   |  |   | MULTIPLIER  |   |                             |   |                                 |   |   |   |   |   |   |   |
|  |   |                              |   |  |   | 9 = *10 <sup>-1</sup><br>0 = *10 <sup>0</sup><br>1 = *10 <sup>1</sup><br>2 = *10 <sup>2</sup><br>3 = *10 <sup>3</sup><br>4 = *10 <sup>4</sup> |   |                             |   |                                 |   |   |   |   |   |   |   |
| Product Description: MCT 0603-25 0.1 % PW 4K64 |   |                              |   |  |   |   |   |                             |   |                                 |   |   |   |   |   |   |   |
| MCT  |   | 0603                         |   | -25  |   | 0.1 %   |   | PW                          |   | 4K64                            |   |   |   |   |   |   |   |
| TYPE   |   | SIZE                         |   | TCR  |   | TOLERANCE   |   | PACKAGING                   |   | RESISTANCE                      |   |   |   |   |   |   |   |
| MCS<br>MCT<br>MCU<br>MCA                       |   | 0402<br>0603<br>0805<br>1206 |   | ± 10 ppm/K<br>± 15 ppm/K<br>± 25 ppm/K             |   | ± 0.1 %<br>± 0.25 %   |   | P1<br>P5<br>PW<br>E1<br>E0  |   | 4K64 = 4.64 kΩ<br>50R1 = 50.1 Ω |   |   |   |   |   |   |   |

Note

- Products can be ordered using either the PART NUMBER or PRODUCT DESCRIPTION.

| TEMPERATURE COEFFICIENT AND RESISTANCE RANGE |           |                        |                       |                       |                       |
|--|-----------|------------------------|-----------------------|-----------------------|-----------------------|
| DESCRIPTION                                  |           | RESISTANCE RANGE       |                       |                       |                       |
| TCR  | TOLERANCE | MCS 0402               | MCT 0603              | MCU 0805              | MCA 1206              |
| ± 25 ppm/K                                   | ± 0.25 %  | 100 Ω to 221 kΩ        | 39 Ω to 511 kΩ        | 39 Ω to 1.5 MΩ        | 39 Ω to 2 MΩ          |
|  | ± 0.1 %   | <b>100 Ω to 221 kΩ</b> | <b>47 Ω to 511 kΩ</b> | <b>47 Ω to 1.5 MΩ</b> | <b>47 Ω to 2 MΩ</b>   |
| ± 15 ppm/K                                   | ± 0.25 %  | 100 Ω to 150 kΩ        | 39 Ω to 332 kΩ        | 39 Ω to 1 MΩ          | 39 Ω to 1.5 MΩ        |
|  | ± 0.1 %   | <b>100 Ω to 150 kΩ</b> | <b>47 Ω to 332 kΩ</b> | <b>47 Ω to 1 MΩ</b>   | <b>47 Ω to 1.5 MΩ</b> |
| ± 10 ppm/K                                   | ± 0.25 %  | 100 Ω to 130 kΩ        | 39 Ω to 221 kΩ        | 39 Ω to 511 kΩ        | 39 Ω to 1 MΩ          |
|  | ± 0.1 %   | <b>100 Ω to 130 kΩ</b> | <b>47 Ω to 221 kΩ</b> | <b>47 Ω to 511 kΩ</b> | <b>47 Ω to 1 MΩ</b>   |

Notes

- Resistance values are available from the E96 and E192 series, other values are available on request.
- Resistance ranges printed in bold are preferred TCR/tolerance combinations with optimized availability.

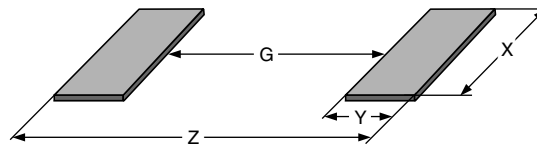
| PACKAGING |      |          |  |           |            |               |
|-----------|------|----------|--|-----------|------------|---------------|
| TYPE      | CODE | QUANTITY | CARRIER TAPE                             | WIDTH     | PITCH      | REEL DIAMETER |
| MCS 0402  | E1   | 1000     | Paper tape acc.<br>IEC 60286-3<br>type I | 8 mm      | 2 mm       | 180 mm/7"     |
|           | E0   | 10 000   |  |           |            |               |
| MCT 0603  | P1   | 1000     |  |           | 4 mm       | 180 mm/7"     |
|           | P5   | 5000     |  |           |            |               |
| MCU 0805  | PW   | 20 000   |  |           | 330 mm/13" |               |
|           | P1   | 1000     |  |           |            |               |
| MCA 1206  | P5   | 5000     |  | 180 mm/7" |            |               |
|           | PW   | 20 000   |  |           | 330 mm/13" |               |
|           | P1   | 1000     |  | 180 mm/7" |            |               |
|           | P5   | 5000     |  |           |            |               |

**DIMENSIONS**



| DIMENSIONS AND MASS |                   |                 |             |             |                  |                  |           |
|---------------------|-------------------|-----------------|-------------|-------------|------------------|------------------|-----------|
| TYPE                | H (mm)            | L (mm)          | W (mm)      | WT (mm)     | Lt (mm)          | Tb (mm)          | MASS (mg) |
| MCS 0402            | 0.32 ± 0.05       | 1.0 ± 0.05      | 0.5 ± 0.05  | > 75 % of W | 0.2 + 0.1/- 0.15 | 0.2 ± 0.1        | 0.6       |
| MCT 0603            | 0.45 + 0.1/- 0.05 | 1.55 ± 0.05     | 0.85 ± 0.1  | > 75 % of W | 0.3 + 0.15/- 0.2 | 0.3 + 0.15/- 0.2 | 1.9       |
| MCU 0805            | 0.45 + 0.1/- 0.05 | 2.0 ± 0.1       | 1.25 ± 0.15 | > 75 % of W | 0.4 + 0.1/- 0.2  | 0.4 + 0.1/- 0.2  | 4.6       |
| MCA 1206            | 0.55 ± 0.1        | 3.2 + 0.1/- 0.2 | 1.6 ± 0.15  | > 75 % of W | 0.5 ± 0.25       | 0.5 ± 0.25       | 9.2       |

**SOLDER PAD DIMENSIONS**



| RECOMMENDED SOLDER PAD DIMENSIONS |                |        |        |        |                  |        |        |        |
|-----------------------------------|----------------|--------|--------|--------|------------------|--------|--------|--------|
| TYPE                              | WAVE SOLDERING |        |        |        | REFLOW SOLDERING |        |        |        |
|                                   | G (mm)         | Y (mm) | X (mm) | Z (mm) | G (mm)           | Y (mm) | X (mm) | Z (mm) |
| MCS 0402                          | -              | -      | -      | -      | 0.35             | 0.55   | 0.55   | 1.45   |
| MCT 0603                          | 0.55           | 1.10   | 1.10   | 2.75   | 0.65             | 0.70   | 0.95   | 2.05   |
| MCU 0805                          | 0.80           | 1.25   | 1.50   | 3.30   | 0.90             | 0.90   | 1.40   | 2.70   |
| MCA 1206                          | 1.40           | 1.50   | 1.90   | 4.40   | 1.50             | 1.15   | 1.75   | 3.80   |

**Note**

- The given solder pad dimensions reflect the considerations for board design and assembly as outlined e.g. in standards IEC 61188-5-x, or in publication IPC-7351. They do not guarantee any supposed thermal properties, particularly as these are also strongly influenced by many other parameters.

Still, the given solder pad dimensions will be found adequate for most general applications, e.g. those referring to “standard operation mode”.



## DESCRIPTION

Production is strictly controlled and follows an extensive set of instructions established for reproducibility. A homogeneous film of metal alloy is deposited on a high grade (Al<sub>2</sub>O<sub>3</sub>) ceramic substrate and conditioned to achieve the desired temperature coefficient. Specially designed inner contacts are deposited on both sides. A special laser is used to achieve the target value by smoothly fine trimming the resistive layer without damaging the ceramics. A further conditioning is applied in order to stabilize the trimming result. The resistor elements are covered by a blue protective coating designed for electrical, mechanical and climatic protection. The terminations receive a final pure tin on nickel plating.

The result of the determined production is verified by an extensive testing procedure and optical inspection performed on 100 % of the individual chip resistors. This includes full screening for the elimination of products with potential risk of early field failures (feasible for  $R \geq 10 \Omega$ ). Only accepted products are laid directly into the paper tape in accordance with **IEC 60286-3** <sup>(3)</sup>.

## ASSEMBLY

The resistors are suitable for processing on automatic SMD assembly systems and for automatic soldering using wave, reflow or vapour phase. The encapsulation is resistant to all cleaning solvents commonly used in the electronics industry, including alcohols, esters and aqueous solutions. The suitability of conformal coatings, if applied, shall be qualified by appropriate means to ensure the long-term stability of the whole system.

The resistors are RoHS compliant, the pure tin plating provides compatibility with lead (Pb)-free and lead-containing soldering processes. Solderability is specified for 2 years after production or requalification. The permitted storage time is 20 years. The immunity of the plating against tin whisker growth has been proven under extensive testing.

All products comply with the **GADSL** <sup>(1)</sup> and the **CEFIC-EECA-EICTA** <sup>(2)</sup> list of legal restrictions on hazardous substances. This includes full compliance with the following directives:

- 2000/53/EC End of Vehicle life Directive (ELV) an Annex II (ELV II)
- 2011/65/EU Restriction of the use of Hazardous Substances Directive (RoHS)
- 2002/96/EC Waste Electrical and Electronic Equipment Directive (WEEE)

## Notes


<sup>(1)</sup> Global Automotive Declarable Substance List, see [www.gadsl.org](http://www.gadsl.org).

<sup>(2)</sup> CEFIC (European Chemical Industry Council), EECA (European Electronic Component Manufacturers Association), EICTA (European trade organisation representing the information and communications technology and consumer electronics), see [www.eicta.org/index.php?id=995](http://www.eicta.org/index.php?id=995) → issues → environment policy → chemicals → chemicals for electronics.

<sup>(3)</sup> The quoted IEC standards are also released as EN standards with the same number and identical contents.

## APPROVALS

The resistors are approved within the IECQ-CECC Quality Assessment System for Electronic Components to the detail specification **EN 140401-801** which refers to **EN 60115-1**, **EN 140400** and the variety of environmental test procedures of the **IEC 60068** <sup>(3)</sup> series.

Conformity is attested by the use of the **CECC** logo () as the mark of conformity on the package label.

Vishay Beyschlag has achieved “**Approval of Manufacturer**” in accordance with **IECQ 03-1**. The release certificate for “**Technology Approval Schedule**” in accordance with **CECC 240001** based on **IECQ 03-3** is granted for the Vishay Beyschlag manufacturing process.

## RELATED PRODUCTS

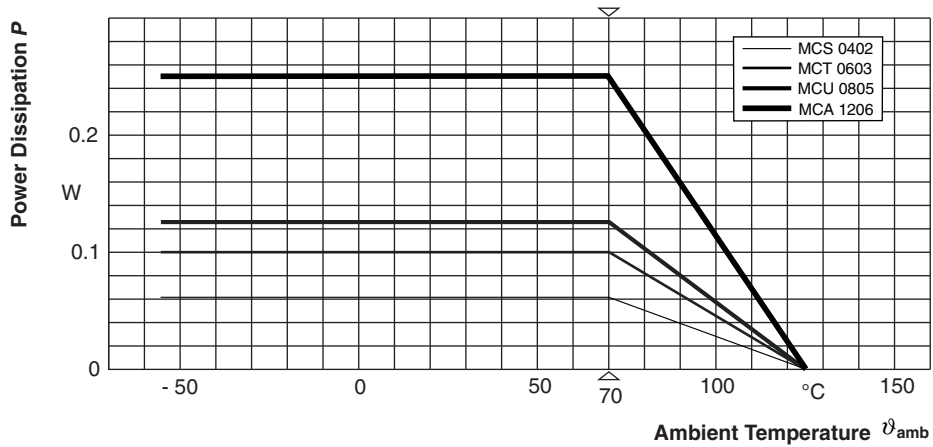
Resistors are available with **established reliability** in accordance with **EN 140401-801** version E. Please refer to the special datasheet ([www.vishay.com/doc?28744](http://www.vishay.com/doc?28744)) for information on failure rate level, available resistance ranges and order codes.

For more information about products with higher rated power and higher operation temperature please refer to the **Professional Thin Film Chip Resistor** datasheet ([www.vishay.com/doc?28705](http://www.vishay.com/doc?28705)).

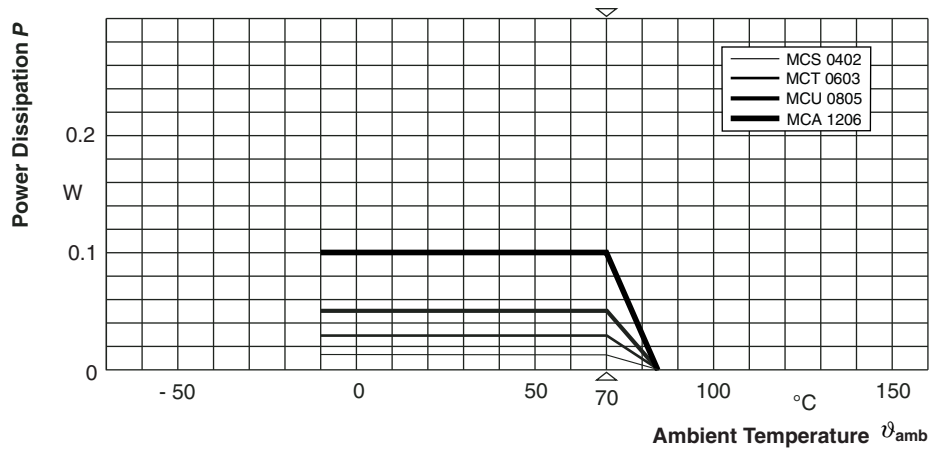
Precision **chip resistor arrays** may be used in voltage divider applications or precision amplifiers where close matching between multiple resistors is necessary. Please refer to the ACAS 0612 - Precision datasheet ([www.vishay.com/doc?28751](http://www.vishay.com/doc?28751)).



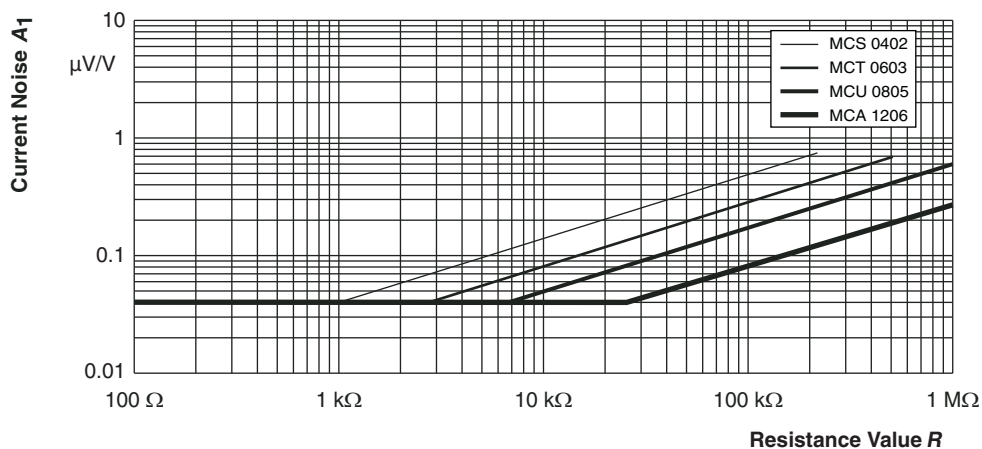
**FUNCTIONAL PERFORMANCE**



**Derating - Standard Operation**



**Derating - Precision Operation**



**Current Noise A<sub>1</sub>**

In accordance with IEC 60195



**TESTS AND REQUIREMENTS**

All tests are carried out in accordance with the following specifications:

EN 60115-1, generic specification (includes tests)

EN 140400, sectional specification (includes schedule for qualification approval)

EN 140401-801, detail specification (includes schedule for conformance inspection)

The components are approved in accordance with the European CECC-system, where applicable. The following table contains only the most important tests. For the full test schedule refer to the documents listed above. The testing also covers most of the requirements specified by EIA/IS-703 and JIS-C-5202.

The tests are carried out in accordance with IEC 60068 and under standard atmospheric conditions in accordance with IEC 60068-1, 5.3. Climatic category LCT/UCT/56 (rated temperature range: Lower Category Temperature, Upper Category Temperature; damp heat, long term, 56 days) is valid.

Unless otherwise specified the following values apply:

Temperature: 15 °C to 35 °C

Relative humidity: 45 % to 75 %

Air pressure: 86 kPa to 106 kPa (860 mbar to 1060 mbar).

The components are mounted for testing on boards in accordance with EN 60115-1, 4.31 unless otherwise specified.

The parameters stated in the Test Procedures and Requirements table are based on the required tests and permitted limits of EN 140401-801. However, some additional tests and a number of improvements against those minimum requirements have been included.

| TEST PROCEDURES AND REQUIREMENTS |                         |  |  |  |  |
|----------------------------------|-------------------------|--|--|--|--|
| EN 60115-1 CLAUSE                | IEC 60068-2 TEST METHOD | TEST   | PROCEDURE  | REQUIREMENTS PERMISSIBLE CHANGE ( $\Delta R$ )                               |  |
|                                  |                         |  |  | STABILITY CLASS 0.1  | STABILITY CLASS 0.25   |
|                                  |                         |  | Stability for product types:   |  |  |
|                                  |                         |  | <b>MCS 0402</b>  | 100 $\Omega$ to 10 k $\Omega$  | > 10 k $\Omega$ to 221 k $\Omega$                                      |
|                                  |                         |  | <b>MCT 0603</b>  | 100 $\Omega$ to 10 k $\Omega$  | 39 $\Omega$ to < 100 $\Omega$ ;<br>> 10 k $\Omega$ to 511 k $\Omega$   |
|                                  |                         |  | <b>MCU 0805</b>  | 100 $\Omega$ to 47.5 k $\Omega$  | 39 $\Omega$ to < 100 $\Omega$ ;<br>> 47.5 k $\Omega$ to 1.5 M $\Omega$ |
|                                  |                         |  | <b>MCA 1206</b>  | 47 $\Omega$ to 332 k $\Omega$  | 39 $\Omega$ to < 47 $\Omega$ ;<br>> 332 k $\Omega$ to 2 M $\Omega$     |
| 4.5                              | -                       | Resistance                                   | -  | $\pm 0.1 \% R$ ; $\pm 0.25 \% R$   |  |
| 4.8.4.2                          | -                       | Temperature coefficient                      | At (20/- 10/20) °C and (20/85/20) °C   | $\pm 25$ ppm/K; $\pm 15$ ppm/K;<br>$\pm 10$ ppm/K                            | -  |
|                                  |                         |  | At (20/- 55/20) °C and (20/125/20) °C  | -  | $\pm 25$ ppm/K; $\pm 15$ ppm/K;<br>$\pm 10$ ppm/K                      |
| 4.25.1                           | -                       | Endurance at 70 °C: Precision operation mode | $U = \sqrt{P_{70} \times R}$ or $U = U_{max.}$ ; whichever is the less severe;<br>1.5 h on; 0.5 h off;<br>70 °C; 1000 h<br>70 °C; 8000 h | $\pm (0.1 \% R + 0.02 \Omega)^{(1)}$<br>$\pm (0.2 \% R + 0.02 \Omega)^{(1)}$ |  |
|                                  |                         | Endurance at 70 °C: Standard operation mode  | $U = \sqrt{P_{70} \times R}$ or $U = U_{max.}$ ; whichever is the less severe;<br>1.5 h on; 0.5 h off;<br>70 °C; 1000 h<br>70 °C; 8000 h | $\pm (0.2 \% R + 0.02 \Omega)^{(1)}$<br>$\pm (0.4 \% R + 0.05 \Omega)^{(1)}$ |  |



| TEST PROCEDURES AND REQUIREMENTS |                         |  |  |  |  |
|----------------------------------|-------------------------|--|--|--|--|
| EN 60115-1 CLAUSE                | IEC 60068-2 TEST METHOD | TEST   | PROCEDURE  | REQUIREMENTS PERMISSIBLE CHANGE ( $\Delta R$ ) |  |
|                                  |                         |  |  | STABILITY CLASS 0.1                            | STABILITY CLASS 0.25   |
|                                  |                         |  | Stability for product types:   |  |  |
|                                  |                         |  | <b>MCS 0402</b>  | 100 $\Omega$ to 10 k $\Omega$                  | > 10 k $\Omega$ to 221 k $\Omega$                                      |
|                                  |                         |  | <b>MCT 0603</b>  | 100 $\Omega$ to 10 k $\Omega$                  | 39 $\Omega$ to < 100 $\Omega$ ;<br>> 10 k $\Omega$ to 511 k $\Omega$   |
|                                  |                         |  | <b>MCU 0805</b>  | 100 $\Omega$ to 47.5 k $\Omega$                | 39 $\Omega$ to < 100 $\Omega$ ;<br>> 47.5 k $\Omega$ to 1.5 M $\Omega$ |
|                                  |                         |  | <b>MCA 1206</b>  | 47 $\Omega$ to 332 k $\Omega$                  | 39 $\Omega$ to < 47 $\Omega$ ;<br>> 332 k $\Omega$ to 2 M $\Omega$     |
| 4.25.3                           | -                       | Endurance at upper category temperature                        | 85 °C; 1000 h  | $\pm (0.1 \% R + 0.02 \Omega)$                 | $\pm (0.2 \% R + 0.02 \Omega)$   |
|                                  |                         |  | 125 °C; 1000 h   | $\pm (0.2 \% R + 0.02 \Omega)$                 | $\pm (0.25 \% R + 0.05 \Omega)$  |
| 4.24                             | 78 (Cab)                | Damp heat, steady state  | (40 $\pm$ 2) °C; 56 days;<br>(93 $\pm$ 3) % RH   | $\pm (0.1 \% R + 0.02 \Omega)$                 | $\pm (0.25 \% R + 0.05 \Omega)$  |
| 4.23                             |                         | Climatic sequence:<br>Standard operation mode:                 |  |  |  |
| 4.23.2                           | 2 (Ba)                  | Dry heat   | 125 °C; 16 h   |  |  |
| 4.23.3                           | 30 (Db)                 | Damp heat, cyclic  | 55 °C; 24 h; > 90 % RH;<br>1 cycle   |  |  |
| 4.23.4                           | 1 (Aa)                  | Cold   | - 55 °C; 2 h   |  |  |
| 4.23.5                           | 13 (M)                  | Low air pressure   | 8.5 kPa; 2 h; (25 $\pm$ 10) °C   | $\pm (0.1 \% R + 0.02 \Omega)$                 | $\pm (0.25 \% R + 0.05 \Omega)$  |
| 4.23.6                           | 30 (Db)                 | Damp heat, cyclic  | 55 °C; 24 h; > 90 % RH;<br>5 cycles  |  |  |
| 4.23.7                           | -                       | DC load  | $U = \sqrt{P_{70} \times R} \leq U_{max.}$ ;<br>1 min.   |  |  |
| -                                | 1 (Aa)                  | Cold   | - 55 °C; 2 h   |  | $\pm (0.05 \% R + 0.01 \Omega)$  |
| 4.19                             | 14 (Na)                 | Rapid change of temperature                                    | 30 min at LCT and<br>30 min at UCT;<br>LCT = - 10 °C;<br>UCT = 85 °C;<br>5 cycles  |  | $\pm (0.05 \% R + 0.01 \Omega)$<br>no visible damage                   |
|                                  |                         |  | LCT = - 55 °C;<br>UCT = 125 °C;<br>1000 cycles   |  | $\pm (0.25 \% R + 0.05 \Omega)$<br>no visible damage                   |
| 4.13                             | -                       | Short time overload:<br>Precision operation mode               | $U = 2.5 \times \sqrt{P_{70} \times R}$<br>or $U = 2 \times U_{max.}$ ;<br>whichever is the less severe;<br>5 s  |  | $\pm (0.05 \% R + 0.01 \Omega)$  |
|                                  |                         | Short time overload:<br>Standard operation mode                | $U = 2.5 \times \sqrt{P_{70} \times R}$<br>or $U = 2 \times U_{max.}$ ;<br>whichever is the less severe;<br>5 s  |  | $\pm (0.05 \% R + 0.01 \Omega)$  |
| 4.27                             | -                       | Single pulse high voltage overload:<br>Standard operation mode | Severity no. 4:<br>$U = 10 \times \sqrt{P_{70} \times R}$<br>or $U = 2 \times U_{max.}$ ;<br>whichever is the less severe;<br>10 pulses 10 $\mu$ s/700 $\mu$ s |  | $\pm (0.5 \% R + 0.05 \Omega)^{(2)}$<br>no visible damage              |



| TEST PROCEDURES AND REQUIREMENTS |                         |   |   |  |  |
|----------------------------------|-------------------------|---|---|--|--|
| EN 60115-1 CLAUSE                | IEC 60068-2 TEST METHOD | TEST  | PROCEDURE   | REQUIREMENTS PERMISSIBLE CHANGE ( $\Delta R$ )   |  |
|                                  |                         |   |   | STABILITY CLASS 0.1  | STABILITY CLASS 0.25   |
|                                  |                         |   | Stability for product types:  |  |  |
|                                  |                         |   | <b>MCS 0402</b>   | 100 $\Omega$ to 10 k $\Omega$  | > 10 k $\Omega$ to 221 k $\Omega$                                      |
|                                  |                         |   | <b>MCT 0603</b>   | 100 $\Omega$ to 10 k $\Omega$  | 39 $\Omega$ to < 100 $\Omega$ ;<br>> 10 k $\Omega$ to 511 k $\Omega$   |
|                                  |                         |   | <b>MCU 0805</b>   | 100 $\Omega$ to 47.5 k $\Omega$  | 39 $\Omega$ to < 100 $\Omega$ ;<br>> 47.5 k $\Omega$ to 1.5 M $\Omega$ |
|                                  |                         |   | <b>MCA 1206</b>   | 47 $\Omega$ to 332 k $\Omega$  | 39 $\Omega$ to < 47 $\Omega$ ;<br>> 332 k $\Omega$ to 2 M $\Omega$     |
| 4.37                             | -                       | Periodic electric overload: Standard operation mode | $U = \sqrt{15 \times P_{70} \times R}$<br>or $U = 2 \times U_{max.}$ ;<br>whichever is the less severe;<br>0.1 s on; 2.5 s off;<br>1000 cycles                  | $\pm (0.5 \% R + 0.05 \Omega)$ <sup>(2)</sup><br>no visible damage                     |  |
| 4.40                             | -                       | Electro static discharge (Human Body Model)         | IEC 61340-3-1;<br>3 pos. + 3 neg.<br>(equivalent to MIL-STD-883,<br>method 3015)<br>MCS 0402: 500 V<br>MCT 0603: 1000 V<br>MCU 0805: 1500 V<br>MCA 1206: 2000 V | $\pm (0.5 \% R + 0.05 \Omega)$   |  |
| 4.22                             | 6 (Fc)                  | Vibration   | Endurance by sweeping;<br>10 Hz to 2000 Hz;<br>no resonance; amplitude<br>$\leq 1.5$ mm or $\leq 200$ m/s <sup>2</sup> ;<br>7.5 h                               | $\pm (0.05 \% R + 0.01 \Omega)$<br>no visible damage                                   |  |
| 4.17.2                           | 58 (Td)                 | Solderability                                       | Solder bath method;<br>SnPb40; non-activated flux;<br>(215 $\pm$ 3) $^{\circ}$ C; (3 $\pm$ 0.3) s   | Good tinning ( $\geq 95$ % covered);<br>no visible damage                              |  |
|                                  |                         |   | Solder bath method;<br>SnAg3Cu0.5 or SnAg3.5;<br>non-activated flux;<br>(235 $\pm$ 3) $^{\circ}$ C; (2 $\pm$ 0.2) s   | Good tinning ( $\geq 95$ % covered);<br>no visible damage                              |  |
| 4.18.2                           | 58 (Td)                 | Resistance to soldering heat                        | Solder bath method;<br>(260 $\pm$ 5) $^{\circ}$ C; (10 $\pm$ 1) s   | $\pm (0.05 \% R + 0.01 \Omega)$  |  |
| 4.29                             | 45 (XA)                 | Component solvent resistance                        | Isopropyl alcohol; + 50 $^{\circ}$ C;<br>method 2   | No visible damage  |  |
| 4.32                             | 21 (Ue <sub>3</sub> )   | Shear (adhesion)                                    | RR1005M and RR1608M;<br>9 N   | No visible damage  |  |
|                                  |                         |   | RR2012M and RR3216M;<br>45 N  | No visible damage  |  |
| 4.33                             | 21 (Ue <sub>1</sub> )   | Substrate bending                                   | Depth 2 mm, 3 times   | $\pm (0.05 \% R + 0.01 \Omega)$<br>no visible damage, no open circuit in bent position |  |
| 4.7                              | -                       | Voltage proof                                       | $U_{RMS} = U_{ins}$ ; (60 $\pm$ 5) s  | No flashover or breakdown  |  |
| 4.35                             | -                       | Flammability  | IEC 60695-2-2,<br>needle flame test; 10 s   | No burning after 30 s  |  |





| TEST PROCEDURES AND REQUIREMENTS       |                                  |   |   |   |  |
|--|----------------------------------|---|---|---|--|
| EN<br>60115-1<br>CLAUSE                | IEC<br>60068-2<br>TEST<br>METHOD | TEST  | PROCEDURE   | REQUIREMENTS<br>PERMISSIBLE CHANGE ( $\Delta R$ ) |  |
|  |                                  |   |   | STABILITY CLASS 0.1                               | STABILITY CLASS 0.25   |
|  |                                  |   | Stability for product types:  |   |  |
|  |                                  |   | <b>MCS 0402</b>   | 100 $\Omega$ to 10 k $\Omega$                     | > 10 k $\Omega$ to 221 k $\Omega$                                      |
|  |                                  |   | <b>MCT 0603</b>   | 100 $\Omega$ to 10 k $\Omega$                     | 39 $\Omega$ to < 100 $\Omega$ ;<br>> 10 k $\Omega$ to 511 k $\Omega$   |
|  |                                  |   | <b>MCU 0805</b>   | 100 $\Omega$ to 47.5 k $\Omega$                   | 39 $\Omega$ to < 100 $\Omega$ ;<br>> 47.5 k $\Omega$ to 1.5 M $\Omega$ |
|  |                                  |   | <b>MCA 1206</b>   | 47 $\Omega$ to 332 k $\Omega$                     | 39 $\Omega$ to < 47 $\Omega$ ;<br>> 332 k $\Omega$ to 2 M $\Omega$     |
| Special requirements for type MCA 1206 |                                  |   |   |   |  |
| 4.25.1                                 | -                                | Endurance<br>at 70 °C:<br>Precision<br>operation mode | $U = \sqrt{P_{70} \times R}$ or $U = U_{max.}$ ;<br>whichever is the less severe;<br>1.5 h on; 0.5 h off; |   |  |
|  |                                  |   | 70 °C; 1000 h   |   | $\pm (0.05 \% R + 0.02 \Omega)$  |
|  |                                  | 70 °C; 8000 h   |   | $\pm (0.1 \% R + 0.02 \Omega)$                    |  |
|  |                                  | Endurance<br>at 70 °C:<br>Standard<br>operation mode  | $U = \sqrt{P_{70} \times R}$ or $U = U_{max.}$ ;<br>whichever is the less severe;<br>1.5 h on; 0.5 h off; |   |  |
| 70 °C; 1000 h                          |                                  |   | $\pm (0.1 \% R + 0.02 \Omega)$  |   |  |
| 70 °C; 8000 h                          |                                  | $\pm (0.25 \% R + 0.05 \Omega)$                       |   |   |  |

**Notes**

- (1) See 4.25.1 (above): special requirements for type MCA 1206.
- (2) The pulse load stability of professional MFC resistors applies for precision resistors also. However, severe pulse loads are likely to jeopardise precision stability requirements.



**HISTORICAL 12NC INFORMATION**

- The resistors had a 12-digit numeric code starting with 2312.
- The subsequent 4 digits indicated the resistor type, specification and packaging; see the 12NC table.
- The remaining 4 digits indicated the resistance value:
  - The first 3 digits indicated the resistance value.
  - The last digit indicated the resistance decade in accordance with the 12NC Indicating Resistance Decade table.

**Last Digit of 12NC Indicating Resistance Decade**

| RESISTANCE DECADE | LAST DIGIT |
|-------------------|------------|
| 10 Ω to 99.9 Ω    | 9          |
| 100 Ω to 999 Ω    | 1          |
| 1 kΩ to 9.99 kΩ   | 2          |
| 10 kΩ to 99.9 kΩ  | 3          |
| 100 kΩ to 999 kΩ  | 4          |
| 1 MΩ to 9.99 MΩ   | 5          |

**Historical 12NC example**

The 12NC of a MCT 0603 resistor, value 47 kΩ and TCR 25 with ± 0.1 % tolerance, supplied in cardboard tape of 5000 units per reel was: 2312 216 74703.

| <b>HISTORICAL 12NC - Resistors type and packaging</b> |            |          |                        |                  |                    |                  |                    |
|---|------------|----------|------------------------|------------------|--------------------|------------------|--------------------|
| DESCRIPTION   |            |          | 2312... ..             |                  |                    |                  |                    |
|   |            |          | CARDBOARD TAPE ON REEL |                  |                    |                  |                    |
| TYPE  | TCR        | TOL.     | P1<br>1000 UNITS       | P5<br>5000 UNITS | PW<br>20 000 UNITS | E1<br>1000 UNITS | E0<br>10 000 UNITS |
| MCS 0402  | ± 25 ppm/K | ± 0.25 % | -                      | -                | -                  | 261 6....        | 276 6....          |
|   |            | ± 0.1 %  | -                      | -                | -                  | 261 7....        | 276 7....          |
|   | ± 15 ppm/K | ± 0.25 % | -                      | -                | -                  | 262 6....        | 277 6....          |
|   |            | ± 0.1 %  | -                      | -                | -                  | 262 7....        | 277 7....          |
|   | ± 10 ppm/K | ± 0.25 % | -                      | -                | -                  | 263 6....        | 278 6....          |
|   |            | ± 0.1 %  | -                      | -                | -                  | 263 7....        | 278 7....          |
| MCT 0603  | ± 25 ppm/K | ± 0.25 % | 201 6....              | 216 6....        | 206 6....          | -                | -                  |
|   |            | ± 0.1 %  | 201 7....              | 216 7....        | 206 7....          | -                | -                  |
|   | ± 15 ppm/K | ± 0.25 % | 202 6....              | 217 6....        | 207 6....          | -                | -                  |
|   |            | ± 0.1 %  | 202 7....              | 217 7....        | 207 7....          | -                | -                  |
|   | ± 10 ppm/K | ± 0.25 % | 203 6....              | 218 6....        | 208 6....          | -                | -                  |
|   |            | ± 0.1 %  | 203 7....              | 218 7....        | 208 7....          | -                | -                  |
| MCU 0805  | ± 25 ppm/K | ± 0.25 % | 241 6....              | 256 6....        | 246 6....          | -                | -                  |
|   |            | ± 0.1 %  | 241 7....              | 256 7....        | 246 7....          | -                | -                  |
|   | ± 15 ppm/K | ± 0.25 % | 242 6....              | 257 6....        | 247 6....          | -                | -                  |
|   |            | ± 0.1 %  | 242 7....              | 257 7....        | 247 7....          | -                | -                  |
|   | ± 10 ppm/K | ± 0.25 % | 243 6....              | 258 6....        | 248 6....          | -                | -                  |
|   |            | ± 0.1 %  | 243 7....              | 258 7....        | 248 7....          | -                | -                  |
| MCA 1206  | ± 25 ppm/K | ± 0.25 % | 381 6....              | 396 6....        | 386 6....          | -                | -                  |
|   |            | ± 0.1 %  | 381 7....              | 396 7....        | 386 7....          | -                | -                  |
|   | ± 15 ppm/K | ± 0.25 % | 382 6....              | 397 6....        | 387 6....          | -                | -                  |
|   |            | ± 0.1 %  | 382 7....              | 397 7....        | 387 7....          | -                | -                  |
|   | ± 10 ppm/K | ± 0.25 % | 383 6....              | 398 6....        | 388 6....          | -                | -                  |
|   |            | ± 0.1 %  | 383 7....              | 398 7....        | 388 7....          | -                | -                  |



## Disclaimer

ALL PRODUCT, PRODUCT SPECIFICATIONS AND DATA ARE SUBJECT TO CHANGE WITHOUT NOTICE TO IMPROVE RELIABILITY, FUNCTION OR DESIGN OR OTHERWISE.

Vishay Intertechnology, Inc., its affiliates, agents, and employees, and all persons acting on its or their behalf (collectively, "Vishay"), disclaim any and all liability for any errors, inaccuracies or incompleteness contained in any datasheet or in any other disclosure relating to any product.

Vishay makes no warranty, representation or guarantee regarding the suitability of the products for any particular purpose or the continuing production of any product. To the maximum extent permitted by applicable law, Vishay disclaims (i) any and all liability arising out of the application or use of any product, (ii) any and all liability, including without limitation special, consequential or incidental damages, and (iii) any and all implied warranties, including warranties of fitness for particular purpose, non-infringement and merchantability.

Statements regarding the suitability of products for certain types of applications are based on Vishay's knowledge of typical requirements that are often placed on Vishay products in generic applications. Such statements are not binding statements about the suitability of products for a particular application. It is the customer's responsibility to validate that a particular product with the properties described in the product specification is suitable for use in a particular application. Parameters provided in datasheets and/or specifications may vary in different applications and performance may vary over time. All operating parameters, including typical parameters, must be validated for each customer application by the customer's technical experts. Product specifications do not expand or otherwise modify Vishay's terms and conditions of purchase, including but not limited to the warranty expressed therein.

Except as expressly indicated in writing, Vishay products are not designed for use in medical, life-saving, or life-sustaining applications or for any other application in which the failure of the Vishay product could result in personal injury or death. Customers using or selling Vishay products not expressly indicated for use in such applications do so at their own risk. Please contact authorized Vishay personnel to obtain written terms and conditions regarding products designed for such applications.

No license, express or implied, by estoppel or otherwise, to any intellectual property rights is granted by this document or by any conduct of Vishay. Product names and markings noted herein may be trademarks of their respective owners.

## Material Category Policy

**Vishay Intertechnology, Inc. hereby certifies that all its products that are identified as RoHS-Compliant fulfill the definitions and restrictions defined under Directive 2011/65/EU of The European Parliament and of the Council of June 8, 2011 on the restriction of the use of certain hazardous substances in electrical and electronic equipment (EEE) - recast, unless otherwise specified as non-compliant.**

**Please note that some Vishay documentation may still make reference to RoHS Directive 2002/95/EC. We confirm that all the products identified as being compliant to Directive 2002/95/EC conform to Directive 2011/65/EU.**

**Vishay Intertechnology, Inc. hereby certifies that all its products that are identified as Halogen-Free follow Halogen-Free requirements as per JEDEC JS709A standards. Please note that some Vishay documentation may still make reference to the IEC 61249-2-21 definition. We confirm that all the products identified as being compliant to IEC 61249-2-21 conform to JEDEC JS709A standards.**

Компания «Life Electronics» занимается поставками электронных компонентов импортного и отечественного производства от производителей и со складов крупных дистрибьюторов Европы, Америки и Азии.

С конца 2013 года компания активно расширяет линейку поставок компонентов по направлению коаксиальный кабель, кварцевые генераторы и конденсаторы (керамические, пленочные, электролитические), за счёт заключения дистрибьюторских договоров

Мы предлагаем:

- Конкуренспособные цены и скидки постоянным клиентам.
- Специальные условия для постоянных клиентов.
- Подбор аналогов.
- Поставку компонентов в любых объемах, удовлетворяющих вашим потребностям.
- Приемлемые сроки поставки, возможна ускоренная поставка.
- Доставку товара в любую точку России и стран СНГ.
- Комплексную поставку.
- Работу по проектам и поставку образцов.
- Формирование склада под заказчика.
- Сертификаты соответствия на поставляемую продукцию (по желанию клиента).
- Тестирование поставляемой продукции.
- Поставку компонентов, требующих военную и космическую приемку.
- Входной контроль качества.
- Наличие сертификата ISO.

В составе нашей компании организован Конструкторский отдел, призванный помогать разработчикам, и инженерам.

Конструкторский отдел помогает осуществить:

- Регистрацию проекта у производителя компонентов.
- Техническую поддержку проекта.
- Защиту от снятия компонента с производства.
- Оценку стоимости проекта по компонентам.
- Изготовление тестовой платы монтаж и пусконаладочные работы.



Тел: +7 (812) 336 43 04 (многоканальный)

Email: [org@lifeelectronics.ru](mailto:org@lifeelectronics.ru)