



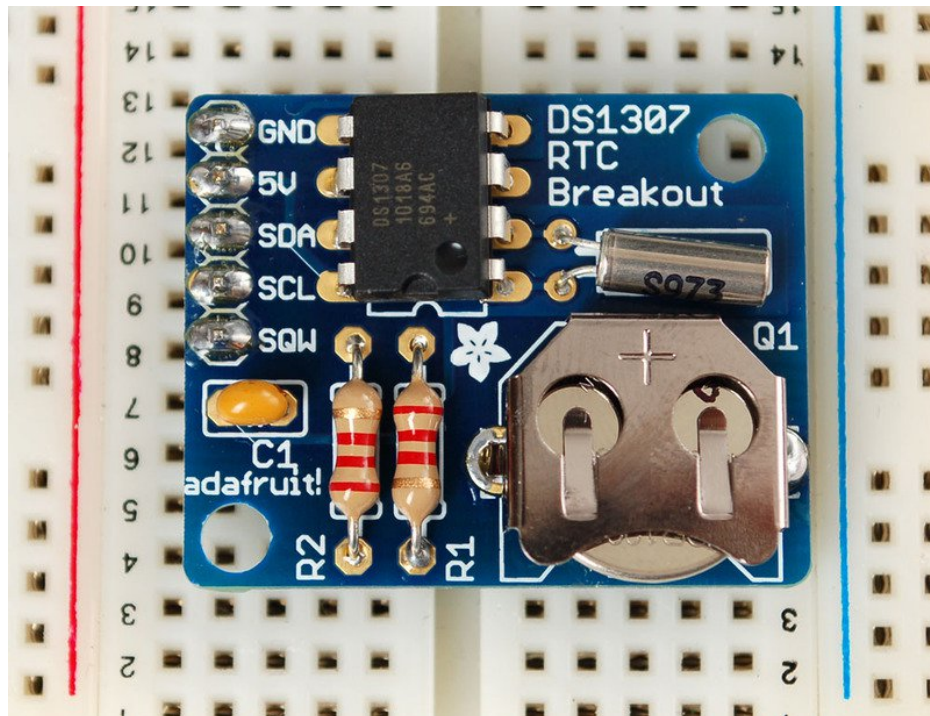
Adding a Real Time Clock to Raspberry Pi

Created by lady ada



Last updated on 2019-05-19 07:22:10 AM UTC

Overview



This tutorial requires a Raspberry Pi running a kernel with the RTC module and DS1307 module included. Current Raspbian distros have this, but others may not!

The Raspberry Pi is designed to be an ultra-low cost computer, so a lot of things we are used to on a computer have been left out. For example, your laptop and computer have a little coin-battery-powered 'Real Time Clock' (RTC) module, which keeps time even when the power is off, or the battery removed. To keep costs low and the size small, an RTC is not included with the Raspberry Pi. Instead, the Pi is intended to be connected to the Internet via Ethernet or WiFi, updating the time automatically from the global **ntp** (network time protocol) servers

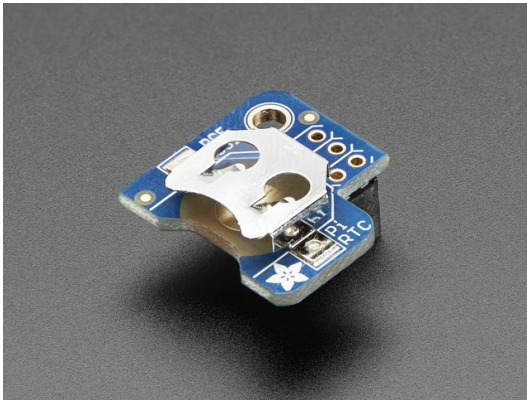
For stand-alone projects with no network connection, you will not be able to keep the time when the power goes out. So in this project we will show you how to add a low cost battery-backed RTC to your Pi to keep time!

Wiring the RTC

To keep costs low, the Raspberry Pi does not include a Real Time Clock module. Instead, users are expected to have it always connected to WiFi or Ethernet and keep time by checking the network. Since we want to include an external module, we'll have to wire one up.

We have three different RTC we suggest, PCF8523 is inexpensive, DS1307 is most common, and DS3231 is most precise. Any of them will do!

While the DS1307 is historically the most common, its not the best RTC chipset, we've found!



Adafruit PiRTC - PCF8523 Real Time Clock for Raspberry Pi

\$5.95
IN STOCK

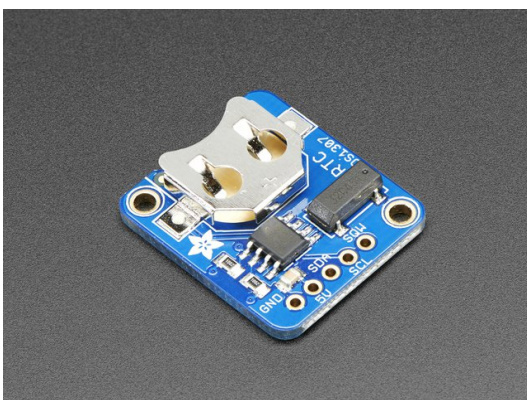
ADD TO CART



Adafruit PCF8523 Real Time Clock Assembled Breakout Board

\$4.95
IN STOCK

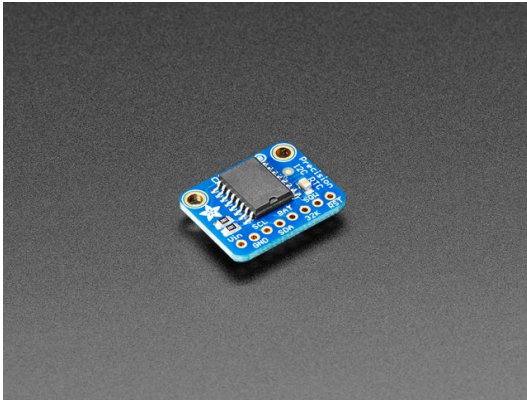
ADD TO CART



Adafruit DS1307 Real Time Clock Assembled Breakout Board

\$7.50
IN STOCK

ADD TO CART



Adafruit DS3231 Precision RTC Breakout

\$13.95
IN STOCK

ADD TO CART

Don't forget to also install a CR1220 coin cell. In particular the DS1307 won't work at all without it and none of the RTCs will keep time when the Pi is off and no coin battery is in place.



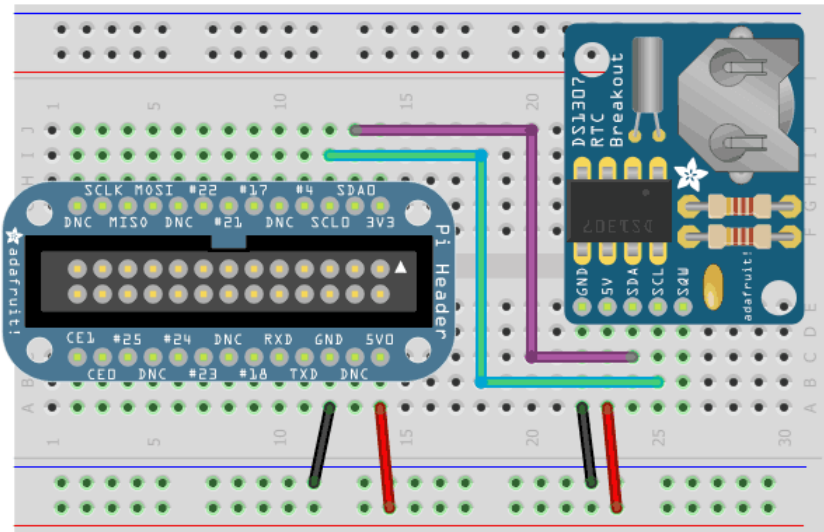
CR1220 12mm Diameter - 3V Lithium Coin Cell Battery

\$0.95
IN STOCK

ADD TO CART

Wiring is simple:

1. Connect **VCC** on the breakout board to the **5.0V** pin of the Pi (if using DS1307)
Connect **VCC** on the breakout board to the **3.3V** pin of the Pi (if using PCF8523 or DS3231)
2. Connect **GND** on the breakout board to the **GND** pin of the Pi
3. Connect **SDA** on the breakout board to the **SDA** pin of the Pi
4. Connect **SCL** on the breakout board to the **SCL** pin of the Pi



Set Up & Test I2C

Set up I2C on your Pi

You'll also need to set up i2c on your Pi, to do so, run **sudo raspi-config** and under **Advanced** select I2C and turn it on.

For more details, check out our tutorial on Raspberry Pi i2c setup and testing at <http://learn.adafruit.com/adafruits-raspberry-pi-lesson-4-gpio-setup/configuring-i2c> (<https://adafru.it/aTl>)

Reboot once you've done that with **sudo reboot**

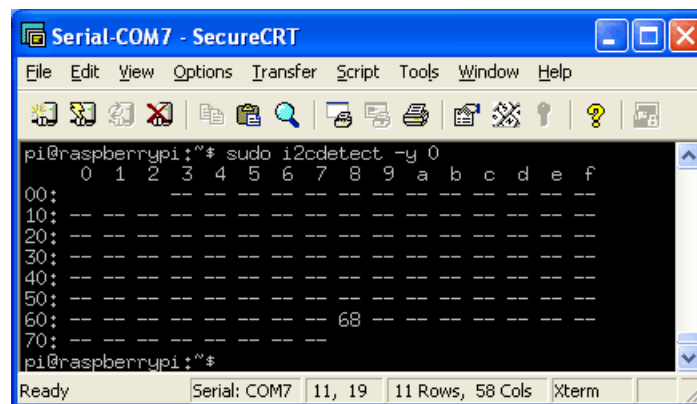
Verify Wiring (I2C scan)

Verify your wiring by running

sudo apt-get install python-smbus i2c-tools

to install the helper software and then **sudo i2cdetect -y 1** at the command line, you should see ID #68 show up - that's the address of the DS1307, PCF8523 or DS3231!

If you have a much older Pi 1, you will have to run **sudo i2cdetect -y 0** as the I2C bus address changed from 0 to 1



```

pi@raspberrypi:~$ sudo i2cdetect -y 0
 0  1  2  3  4  5  6  7  8  9  a  b  c  d  e  f
00: -- -- -- -- -- -- -- -- -- -- -- -- -- -- --
10: -- -- -- -- -- -- -- -- -- -- -- -- -- -- --
20: -- -- -- -- -- -- -- -- -- -- -- -- -- -- --
30: -- -- -- -- -- -- -- -- -- -- -- -- -- -- --
40: -- -- -- -- -- -- -- -- -- -- -- -- -- -- --
50: -- -- -- -- -- -- -- -- -- -- -- -- -- -- --
60: -- -- -- -- -- -- 68 -- -- -- -- -- -- -- --
70: -- -- -- -- -- -- -- -- -- -- -- -- -- -- --
pi@raspberrypi:~$
  
```



Once you have the Kernel driver running, i2cdetect will skip over 0x68 and display UU instead, this means its working!

Set RTC Time

Now that we have the module wired up and verified that you can see the module with `i2cdetect`, we can set up the module.

Don't forget to set up I2C in the previous step!

Raspbian Jessie (Systemd)

Thanks to kd8twg for the hints! (<https://adafru.it/ne3>)

You can add support for the RTC by adding a device tree overlay. Run

```
sudo nano /boot/config.txt
```

to edit the pi configuration and add whichever matches your RTC chip:

```
dtoverlay=i2c-rtc,ds1307
```

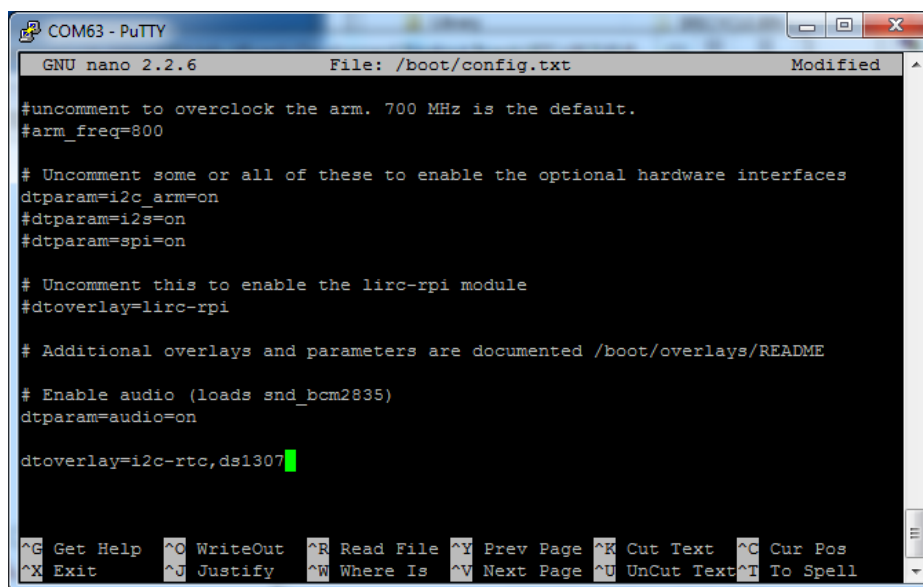
or

```
dtoverlay=i2c-rtc,pcf8523
```

or

```
dtoverlay=i2c-rtc,ds3231
```

to the end of the file



```
COM63 - PuTTY
GNU nano 2.2.6      File: /boot/config.txt      Modified

#uncomment to overclock the arm. 700 MHz is the default.
#arm_freq=800

# Uncomment some or all of these to enable the optional hardware interfaces
dtparam=i2c_arm=on
#dtparam=i2s=on
#dtparam=spi=on

# Uncomment this to enable the lirc-rpi module
#dtoverlay=lirc-rpi

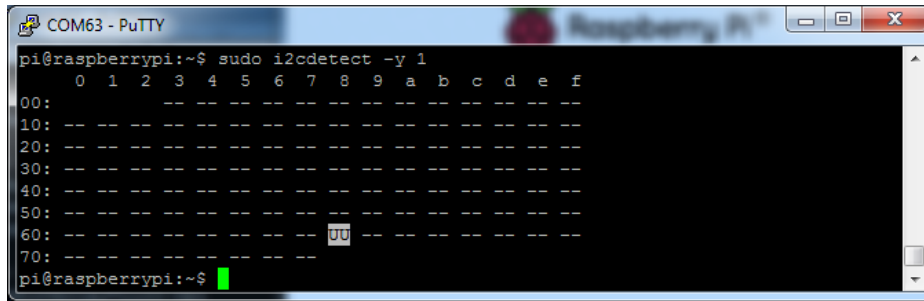
# Additional overlays and parameters are documented /boot/overlays/README

# Enable audio (loads snd_bcm2835)
dtparam=audio=on

dtoverlay=i2c-rtc,ds1307

^G Get Help  ^O WriteOut  ^R Read File  ^Y Prev Page  ^K Cut Text   ^C Cur Pos
^X Exit      ^J Justify   ^W Where Is  ^V Next Page  ^U UnCut Text ^T To Spell
```

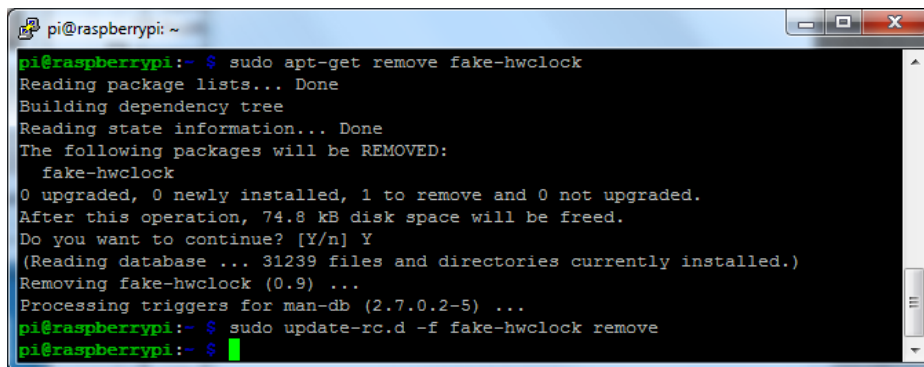
Save it and run `sudo reboot` to start again. Log in and run `sudo i2cdetect -y 1` to see the UU show up where 0x68 should be



```
pi@raspberrypi:~$ sudo i2cdetect -y 1
    0  1  2  3  4  5  6  7  8  9  a  b  c  d  e  f
00:  -- -- -- -- -- -- -- -- -- -- -- -- -- --
10:  -- -- -- -- -- -- -- -- -- -- -- -- -- --
20:  -- -- -- -- -- -- -- -- -- -- -- -- -- --
30:  -- -- -- -- -- -- -- -- -- -- -- -- -- --
40:  -- -- -- -- -- -- -- -- -- -- -- -- -- --
50:  -- -- -- -- -- -- -- -- -- -- -- -- -- --
60:  -- -- -- -- -- -- -- -- UU -- -- -- -- --
70:  -- -- -- -- -- -- -- -- -- -- -- -- -- --
pi@raspberrypi:~$
```

Disable the "fake hwclock" which interferes with the 'real' hwclock

- `sudo apt-get -y remove fake-hwclock`
- `sudo update-rc.d -f fake-hwclock remove`
- `sudo systemctl disable fake-hwclock`

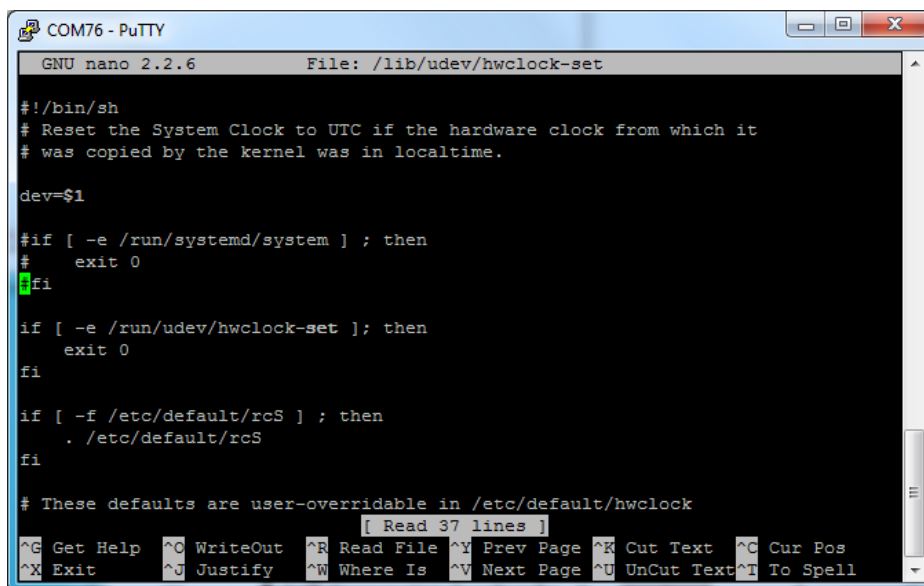


```
pi@raspberrypi:~$ sudo apt-get remove fake-hwclock
Reading package lists... Done
Building dependency tree
Reading state information... Done
The following packages will be REMOVED:
  fake-hwclock
0 upgraded, 0 newly installed, 1 to remove and 0 not upgraded.
After this operation, 74.8 kB disk space will be freed.
Do you want to continue? [Y/n] Y
(Reading database ... 31239 files and directories currently installed.)
Removing fake-hwclock (0.9) ...
Processing triggers for man-db (2.7.0.2-5) ...
pi@raspberrypi:~$ sudo update-rc.d -f fake-hwclock remove
pi@raspberrypi:~$
```

Now with the fake-hw clock off, you can start the original 'hardware clock' script.

Run `sudo nano /lib/udev/hwclock-set` and comment out these three lines:

```
#if [ -e /run/systemd/system ] ; then
# exit 0
#fi
```



```
GNU nano 2.2.6      File: /lib/udev/hwclock-set

#!/bin/sh
# Reset the System Clock to UTC if the hardware clock from which it
# was copied by the kernel was in localtime.

dev=$1

#if [ -e /run/systemd/system ] ; then
#   exit 0
#fi

if [ -e /run/udev/hwclock-set ] ; then
    exit 0
fi

if [ -f /etc/default/rcS ] ; then
    . /etc/default/rcS
fi

# These defaults are user-overridable in /etc/default/hwclock
[ Read 37 lines ]
^G Get Help  ^O WriteOut  ^R Read File ^Y Prev Page ^K Cut Text  ^C Cur Pos
^X Exit      ^J Justify   ^W Where Is  ^V Next Page ^U UnCut Text ^T To Spell
```


Also comment out the two lines

```
/sbin/hwclock --rtc=$dev --systz --badyear
```

and

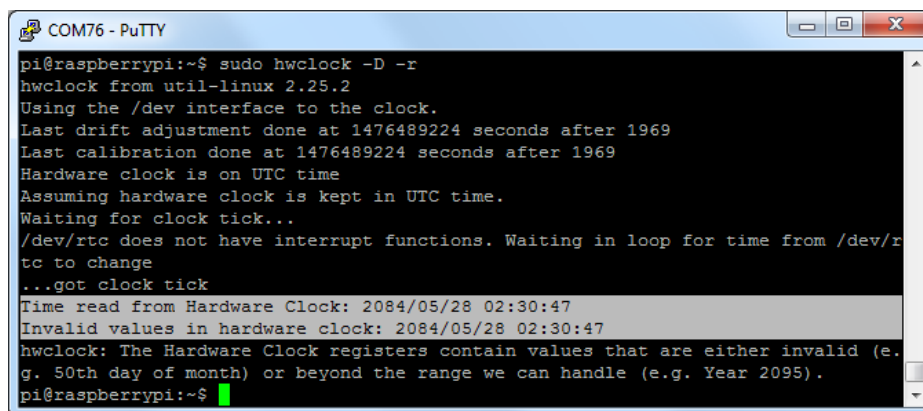
```
/sbin/hwclock --rtc=$dev --systz
```

```
if [ yes = "$BADYEAR" ] ; then
# /sbin/hwclock --rtc=$dev --systz --badyear
/sbin/hwclock --rtc=$dev --hctosys --badyear
else
# /sbin/hwclock --rtc=$dev --systz
/sbin/hwclock --rtc=$dev --hctosys
fi

# Note 'touch' may not be available in initramfs
> /run/udev/hwclock-set
```

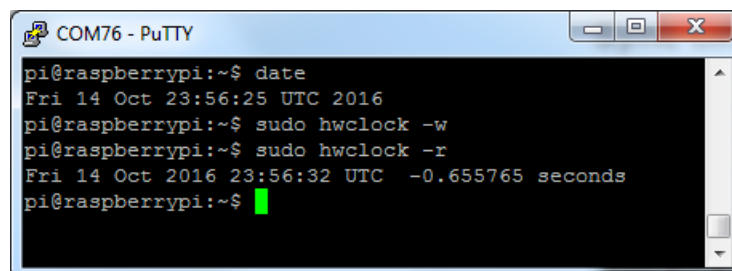
Sync time from Pi to RTC

When you first plug in the RTC module, it's going to have the wrong time because it has to be set once. You can always read the time directly from the RTC with **sudo hwclock -D -r**



```
pi@raspberrypi:~$ sudo hwclock -D -r
hwclock from util-linux 2.25.2
Using the /dev interface to the clock.
Last drift adjustment done at 1476489224 seconds after 1969
Last calibration done at 1476489224 seconds after 1969
Hardware clock is on UTC time
Assuming hardware clock is kept in UTC time.
Waiting for clock tick...
/dev/rtc does not have interrupt functions. Waiting in loop for time from /dev/rtc to change
...got clock tick
Time read from Hardware Clock: 2084/05/28 02:30:47
Invalid values in hardware clock: 2084/05/28 02:30:47
hwclock: The Hardware Clock registers contain values that are either invalid (e.g. 50th day of month) or beyond the range we can handle (e.g. Year 2095).
pi@raspberrypi:~$
```

You can see, the date at first is invalid! You can set the correct time easily. First run **date** to verify the time is correct. Plug in Ethernet or WiFi to let the Pi sync the right time from the Internet. Once that's done, run **sudo hwclock -w** to write the time, and another **sudo hwclock -r** to read the time



```
pi@raspberrypi:~$ date
Fri 14 Oct 23:56:25 UTC 2016
pi@raspberrypi:~$ sudo hwclock -w
pi@raspberrypi:~$ sudo hwclock -r
Fri 14 Oct 2016 23:56:32 UTC -0.655765 seconds
pi@raspberrypi:~$
```

Once the time is set, make sure the coin cell battery is inserted so that the time is saved. You only have to set the time *once*

That's it! Next time you boot the time will automatically be synced from the RTC module

Raspbian Wheezy or other pre-systemd Linux

First, load up the RTC module by running

```
sudo modprobe i2c-bcm2708
sudo modprobe i2c-dev
sudo modprobe rtc-ds1307
```

Then, as root (type in **sudo bash**) run

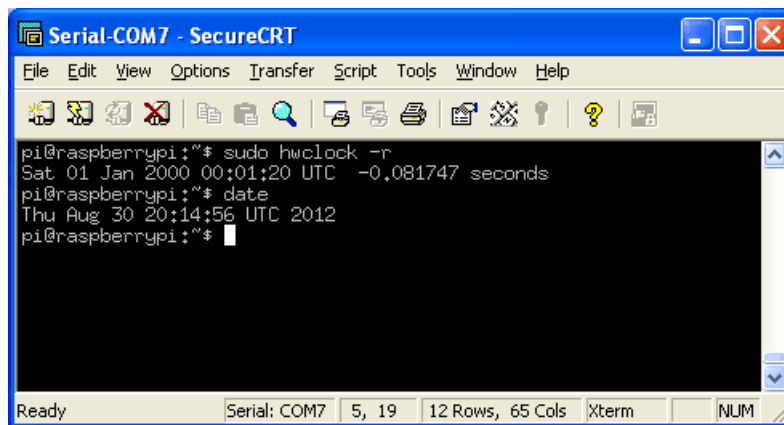
```
echo ds1307 0x68 > /sys/class/i2c-adapter/i2c-1/new_device
```

If you happen to have an old Rev 1 Pi, type in

```
echo ds1307 0x68 > /sys/class/i2c-adapter/i2c-0/new_device
```

You can then type in **exit** to drop out of the root shell.

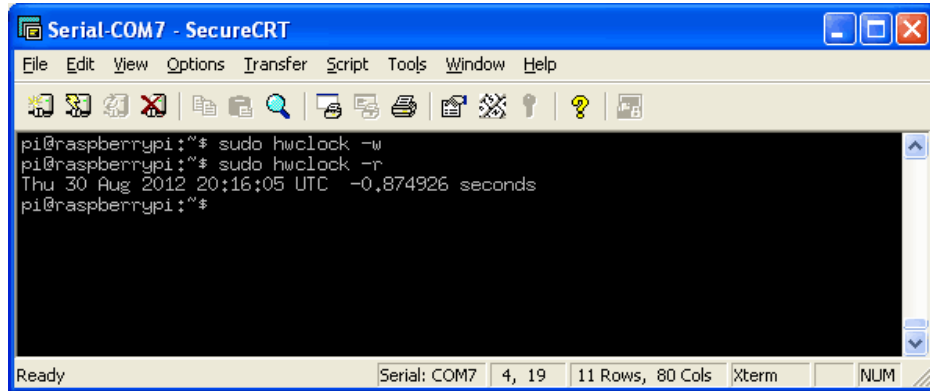
Then check the time with **sudo hwclock -r** which will read the time from the DS1307 module. If this is the first time the module has been used, it will report back Jan 1 2000, and you'll need to set the time



```
pi@raspberrypi:~$ sudo hwclock -r
Sat 01 Jan 2000 00:01:20 UTC -0.081747 seconds
pi@raspberrypi:~$ date
Thu Aug 30 20:14:56 UTC 2012
pi@raspberrypi:~$
```

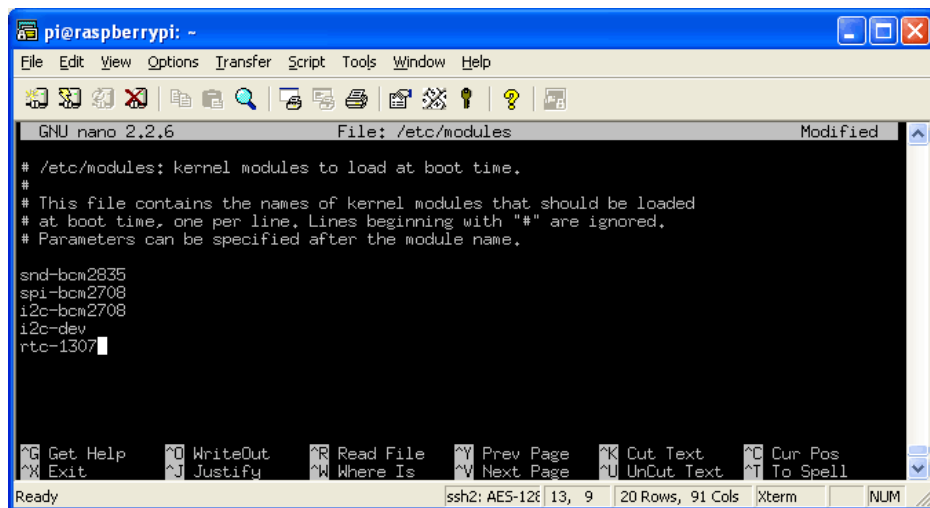
First you'll need to get the right time set on the Pi, the easiest way is to connect it up to Ethernet or Wifi - it will automatically set the time from the network. Once the time is correct (check with the **date** command), run **sudo hwclock -w** to write the system time to the RTC

You can then verify it with **sudo hwclock -r**



```
pi@raspberrypi:~$ sudo hwclock -w
pi@raspberrypi:~$ sudo hwclock -r
Thu 30 Aug 2012 20:16:05 UTC -0.874926 seconds
pi@raspberrypi:~$
```

Next, you'll want to add the RTC kernel module to the `/etc/modules` list, so its loaded when the machine boots. Run `sudo nano /etc/modules` and add `rtc-ds1307` at the end of the file (the image below says `rtc-1307` but its a typo)



```
pi@raspberrypi: -
GNU nano 2.2.6 File: /etc/modules Modified

# /etc/modules: kernel modules to load at boot time.
#
# This file contains the names of kernel modules that should be loaded
# at boot time, one per line. Lines beginning with "#" are ignored.
# Parameters can be specified after the module name.

snd-bcm2835
spi-bcm2708
i2c-bcm2708
i2c-dev
rtc-1307
```

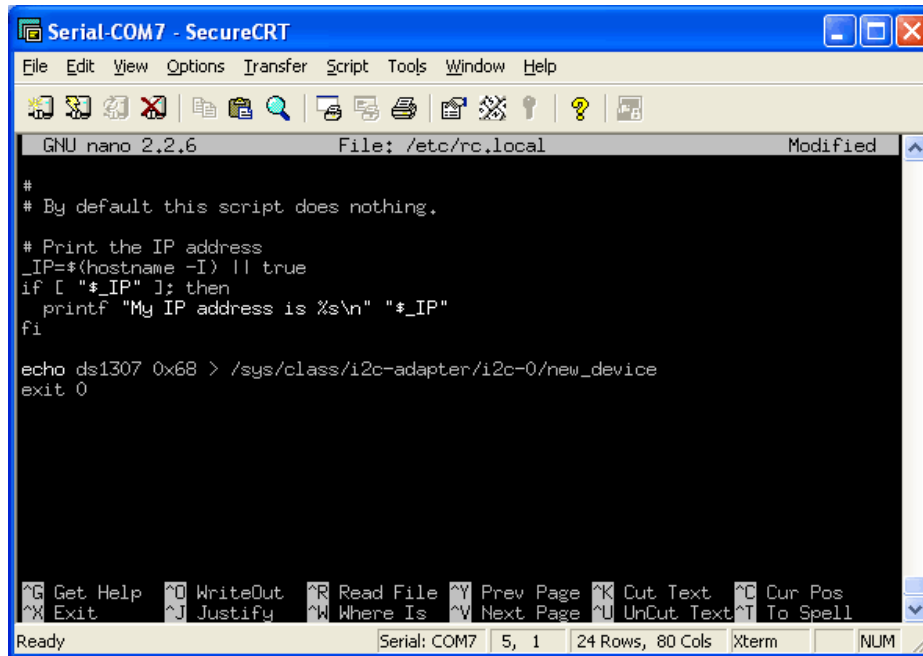
Older pre-Jessie raspbian is a little different. First up, you'll want to create the DS1307 device creation at boot, edit `/etc/rc.local` by running

```
sudo nano /etc/rc.local
```

and add:

```
echo ds1307 0x68 > /sys/class/i2c-adapter/i2c-0/new_device (for v1 raspberry pi)
echo ds1307 0x68 > /sys/class/i2c-adapter/i2c-1/new_device (for v2 raspberry pi)
sudo hwclock -s (both versions)
```

before `exit 0` (we forgot the `hwclock -s` part in the screenshot below)



```
GNU nano 2.2.6      File: /etc/rc.local      Modified
#
# By default this script does nothing.
# Print the IP address
_IP=$(hostname -I) || true
if [ "$_IP" ]; then
    printf "My IP address is %s\n" "$_IP"
fi

echo ds1307 0x68 > /sys/class/i2c-adapter/i2c-0/new_device
exit 0

^G Get Help  ^O WriteOut  ^R Read File  ^Y Prev Page  ^K Cut Text   ^C Cur Pos
^X Exit      ^J Justify   ^W Where Is   ^V Next Page  ^U UnCut Text ^T To Spell
Ready      Serial: COM7  5, 1  24 Rows, 80 Cols  Xterm  NUM
```

That's it! Next time you boot the time will automatically be synced from the RTC module

Компания «Life Electronics» занимается поставками электронных компонентов импортного и отечественного производства от производителей и со складов крупных дистрибьюторов Европы, Америки и Азии.

С конца 2013 года компания активно расширяет линейку поставок компонентов по направлению коаксиальный кабель, кварцевые генераторы и конденсаторы (керамические, пленочные, электролитические), за счёт заключения дистрибьюторских договоров

Мы предлагаем:

- Конкурентоспособные цены и скидки постоянным клиентам.
- Специальные условия для постоянных клиентов.
- Подбор аналогов.
- Поставку компонентов в любых объемах, удовлетворяющих вашим потребностям.
- Приемлемые сроки поставки, возможна ускоренная поставка.
- Доставку товара в любую точку России и стран СНГ.
- Комплексную поставку.
- Работу по проектам и поставку образцов.
- Формирование склада под заказчика.
- Сертификаты соответствия на поставляемую продукцию (по желанию клиента).
- Тестирование поставляемой продукции.
- Поставку компонентов, требующих военную и космическую приемку.
- Входной контроль качества.
- Наличие сертификата ISO.

В составе нашей компании организован Конструкторский отдел, призванный помогать разработчикам, и инженерам.

Конструкторский отдел помогает осуществить:

- Регистрацию проекта у производителя компонентов.
- Техническую поддержку проекта.
- Защиту от снятия компонента с производства.
- Оценку стоимости проекта по компонентам.
- Изготовление тестовой платы монтаж и пусконаладочные работы.



Тел: +7 (812) 336 43 04 (многоканальный)

Email: org@lifeelectronics.ru

www.lifeelectronics.ru