

## Kapton® labels

Tyco Electronics polyimide (Kapton®) labels are all ideal for high temperature labeling requirements such as printed circuit boards. They are suitable for direct wave (bottom side) and IR reflow (top side) PCB applications. Tyco Electronics Kapton® labels are designed to withstand the fluxes, cleaning solvents and molten solder encountered in the manufacture of printed circuit boards. They offer excellent contrast for bar code applications. Tyco Electronics Kapton® labels are suitable for the harshest high temperature applications. For reliable print performance and durability, use with Tyco Electronics's 1330-0619 ribbon.

### Features and benefits

- UL Listed: T1K and T2K
- Thermal transfer printable
- High temperature permanent acrylic adhesive

### T1K

- Gloss white topcoat
- Withstands surface mount board processes on either the top or bottom side of the board
- Low profile 1 mil film offers polyimide thermal performance at competitive cost
- Ideal for manual apply applications

### T2K

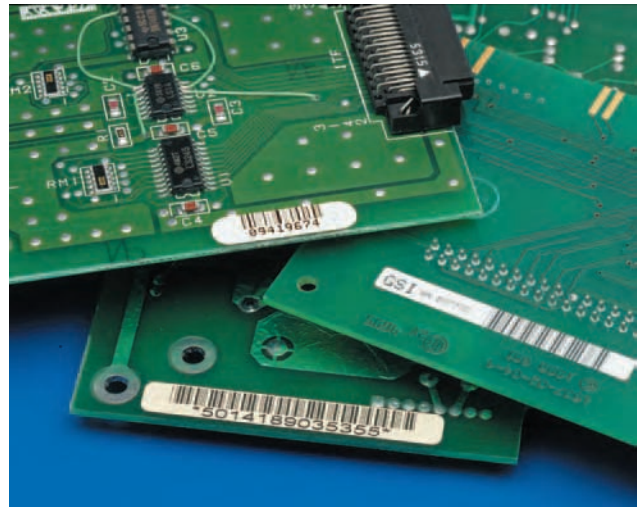
- Gloss white topcoat
- Withstands surface mount board processes on either the top or bottom side of the board
- Ideal for auto apply applications

### KTT

- Matte tan topcoat
- Withstands surface mount board processes on either the top or bottom side of the board
- Product approved for aerospace/defense applications.
- Low outgassing

### TSK

- High opacity gloss white topcoat
- Withstands surface mount board processes on either the top or bottom side of the board
- Deemed to be a static safe product in accordance with EIA 625, EIA 541. Test methods employed were in accordance with EOS/ESD S11.11
- Ideal for auto apply applications



### Specifications/Approvals

|                  |    |     |                     |
|------------------|----|-----|---------------------|
| Tyco Electronics |    | T1K | TTDS-034            |
|                  |    | T2K | TTDS-035            |
|                  |    | TSK | TTDS-085            |
| Industry         | UL | T1K | MH17292 Group PGJ12 |
|                  |    | T2K | MH17292 Group PGJ12 |

### Adhesive

Permanent acrylic

### Service temperature

|                                       |                 |                 |
|---------------------------------------|-----------------|-----------------|
| T1K <sup>1</sup> , T2K <sup>2</sup> , | -40°C to +260°C | -40°F to +500°F |
| TSK <sup>2</sup> , KTT <sup>2</sup>   |                 |                 |

<sup>1</sup> Flash exposure to +472°C (+800°F)

<sup>2</sup> Flash exposure to +538°C (+1000°F)

### Recommended printer

|                    |        |
|--------------------|--------|
| T1K, T2K, TSK, T2Y | T312S* |
| KTT                |        |

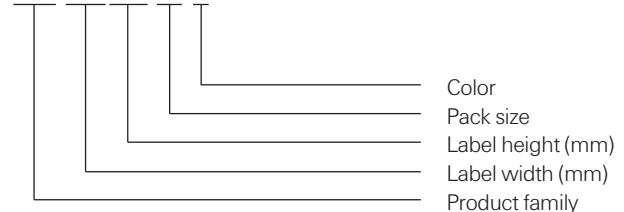
### Recommended ribbon

1330-0619-10\*

\* Alternative printers and ribbons are available for special applications. Contact Tyco Electronics Identification for more information.

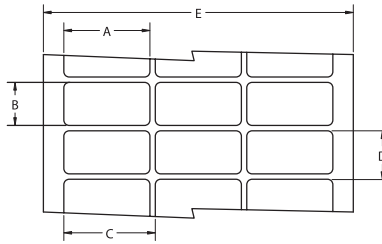
### Part numbering system

T1K-044033-10-9



## T1K White Kapton® labels

### Ordering information



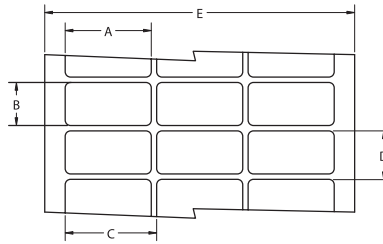
### Product dimensions

| Product order code | Package quantity | Labels across | Label width (A) |               | Label height (B) |               | Horizontal repeat (C) |               | Vertical repeat (D) |               | Web width (E) |               |
|--------------------|------------------|---------------|-----------------|---------------|------------------|---------------|-----------------------|---------------|---------------------|---------------|---------------|---------------|
|                    |                  |               | mm              | <i>inches</i> | mm               | <i>inches</i> | mm                    | <i>inches</i> | mm                  | <i>inches</i> | mm            | <i>inches</i> |
| T1K-044033-10-9    | 10,000           | 20            | 4.4             | <i>0.170</i>  | 3.3              | <i>0.130</i>  | 4.4                   | <i>0.170</i>  | 9.5                 | <i>0.375</i>  | 92.4          | <i>3.636</i>  |
| T1K-064064-25-9    | 25,000           | 12            | 6.4             | <i>0.250</i>  | 6.4              | <i>0.250</i>  | 6.4                   | <i>0.250</i>  | 9.5                 | <i>0.375</i>  | 82.2          | <i>3.240</i>  |
| *T1K-080080-10-9   | 10,000           | 8             | 8.0             | <i>0.315</i>  | 8.0              | <i>0.315</i>  | 9.9                   | <i>0.390</i>  | 13.3                | <i>0.525</i>  | 83.3          | <i>3.280</i>  |
| T1K-095080-25-9    | 25,000           | 5             | 9.5             | <i>0.375</i>  | 8.0              | <i>0.315</i>  | 12.2                  | <i>0.480</i>  | 12.7                | <i>0.500</i>  | 64.3          | <i>2.531</i>  |
| T1K-095095-10-9    | 10,000           | 7             | 9.5             | <i>0.375</i>  | 9.5              | <i>0.375</i>  | 11.1                  | <i>0.437</i>  | 12.7                | <i>0.500</i>  | 82.1          | <i>3.230</i>  |
| T1K-127032-10-9    | 10,000           | 5             | 12.7            | <i>0.500</i>  | 3.2              | <i>0.125</i>  | 19.1                  | <i>0.750</i>  | 3.2                 | <i>0.250</i>  | 94.9          | <i>3.736</i>  |
| T1K-127111-10-9    | 10,000           | 5             | 12.7            | <i>0.500</i>  | 11.1             | <i>0.437</i>  | 16.8                  | <i>0.662</i>  | 14.3                | <i>0.563</i>  | 86.0          | <i>3.380</i>  |
| T1K-127127-10-9    | 10,000           | 5             | 12.7            | <i>0.500</i>  | 12.7             | <i>0.500</i>  | 15.9                  | <i>0.625</i>  | 15.9                | <i>0.625</i>  | 82.6          | <i>3.250</i>  |
| *T1K-165051-25-9   | 25,000           | 4             | 16.5            | <i>0.650</i>  | 5.1              | <i>0.200</i>  | 17.8                  | <i>0.700</i>  | 8.3                 | <i>0.325</i>  | 75.8          | <i>2.990</i>  |
| T1K-171171-10-9    | 10,000           | 5             | 17.1            | <i>0.674</i>  | 17.1             | <i>0.674</i>  | 19.7                  | <i>0.774</i>  | 20.3                | <i>0.800</i>  | 101.8         | <i>4.006</i>  |
| *T1K-178095-10-9   | 10,000           | 4             | 17.8            | <i>0.700</i>  | 9.5              | <i>0.375</i>  | 19.1                  | <i>0.750</i>  | 12.7                | <i>0.500</i>  | 80.9          | <i>3.190</i>  |
| *T1K-191064-10-9   | 10,000           | 4             | 19.1            | <i>0.750</i>  | 6.4              | <i>0.250</i>  | 21.6                  | <i>0.850</i>  | 9.5                 | <i>0.375</i>  | 89.9          | <i>3.540</i>  |
| T1K-229064-10-9    | 10,000           | 3             | 22.9            | <i>0.900</i>  | 6.4              | <i>0.250</i>  | 28.6                  | <i>1.125</i>  | 9.5                 | <i>0.375</i>  | 86.0          | <i>3.390</i>  |
| T1K-254045-10-9    | 10,000           | 3             | 25.4            | <i>1.000</i>  | 4.6              | <i>0.180</i>  | 31.8                  | <i>1.250</i>  | 8.5                 | <i>0.333</i>  | 95.3          | <i>3.750</i>  |
| T1K-254064-10-9    | 10,000           | 3             | 25.4            | <i>1.000</i>  | 6.4              | <i>0.250</i>  | 27.9                  | <i>1.100</i>  | 9.5                 | <i>0.375</i>  | 87.3          | <i>3.436</i>  |
| T1K-254097-10-9    | 10,000           | 3             | 25.4            | <i>1.000</i>  | 9.7              | <i>0.380</i>  | 27.9                  | <i>1.100</i>  | 12.7                | <i>0.500</i>  | 87.4          | <i>3.440</i>  |
| T1K-254127-10-9    | 10,000           | 3             | 25.4            | <i>1.000</i>  | 12.7             | <i>0.500</i>  | 27.9                  | <i>1.100</i>  | 16.9                | <i>0.666</i>  | 87.4          | <i>3.440</i>  |
| T1K-254254-10-9    | 10,000           | 3             | 25.4            | <i>1.000</i>  | 25.4             | <i>1.000</i>  | 27.9                  | <i>1.100</i>  | 28.6                | <i>1.125</i>  | 87.4          | <i>3.440</i>  |
| *T1K-305047-10-9   | 10,000           | 2             | 30.5            | <i>1.200</i>  | 4.7              | <i>0.185</i>  | 33.0                  | <i>1.300</i>  | 7.8                 | <i>0.306</i>  | 69.5          | <i>2.736</i>  |
| T1K-318064-10-9    | 10,000           | 1             | 31.8            | <i>1.250</i>  | 6.4              | <i>0.250</i>  | N/A                   | N/A           | 9.5                 | <i>0.375</i>  | 37.9          | <i>1.490</i>  |
| T1K-381020-10-9    | 10,000           | 1             | 38.1            | <i>1.500</i>  | 2.0              | <i>0.080</i>  | N/A                   | N/A           | 10.7                | <i>0.423</i>  | 44.1          | <i>1.740</i>  |
| *T1K-381127-5-9    | 5,000            | 2             | 38.1            | <i>1.500</i>  | 12.7             | <i>0.500</i>  | 44.2                  | <i>1.738</i>  | 15.9                | <i>0.625</i>  | 88.2          | <i>3.472</i>  |
| T1K-381381-2-5-9   | 2,500            | 2             | 38.1            | <i>1.500</i>  | 38.1             | <i>1.500</i>  | 44.5                  | <i>1.750</i>  | 40.8                | <i>1.607</i>  | 88.9          | <i>3.500</i>  |
| T1K-445064-10-9    | 10,000           | 1             | 44.5            | <i>1.750</i>  | 6.4              | <i>0.250</i>  | N/A                   | N/A           | 9.5                 | <i>0.375</i>  | 50.4          | <i>1.986</i>  |
| T1K-445102-5-9     | 5,000            | 1             | 44.5            | <i>1.750</i>  | 10.2             | <i>0.400</i>  | N/A                   | N/A           | 12.7                | <i>0.500</i>  | 50.4          | <i>1.386</i>  |
| T1K-508064-10-9    | 10,000           | 1             | 50.8            | <i>2.000</i>  | 6.4              | <i>0.250</i>  | N/A                   | N/A           | 9.5                 | <i>0.375</i>  | 56.9          | <i>2.240</i>  |
| T1K-508095-5-9     | 5,000            | 1             | 50.8            | <i>2.000</i>  | 9.5              | <i>0.375</i>  | N/A                   | N/A           | 12.7                | <i>0.500</i>  | 57.2          | <i>2.250</i>  |
| T1K-508127-5-9     | 5,000            | 1             | 50.8            | <i>2.000</i>  | 12.7             | <i>0.500</i>  | N/A                   | N/A           | 15.9                | <i>0.625</i>  | 56.9          | <i>2.240</i>  |

\* NOTE: Kapton®/polyimide labels not compatible with T200 Printers

## T2K White Kapton® labels

### Ordering information



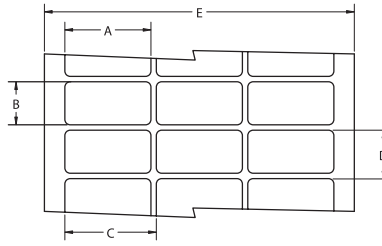
### Product dimensions

| Product order code | Package quantity | Labels across | Label width (A) |               | Label height (B) |               | Horizontal repeat (C) |               | Vertical repeat (D) |               | Web width (E) |               |
|--------------------|------------------|---------------|-----------------|---------------|------------------|---------------|-----------------------|---------------|---------------------|---------------|---------------|---------------|
|                    |                  |               | mm              | <i>inches</i> | mm               | <i>inches</i> | mm                    | <i>inches</i> | mm                  | <i>inches</i> | mm            | <i>inches</i> |
| T2K-044033-10-9    | 10,000           | 20            | 4.4             | <i>0.170</i>  | 3.3              | <i>0.130</i>  | 4.4                   | <i>0.170</i>  | 9.5                 | <i>0.375</i>  | 92.4          | <i>3.636</i>  |
| T2K-064064-25-9    | 25,000           | 12            | 6.4             | <i>0.250</i>  | 6.4              | <i>0.250</i>  | 6.4                   | <i>0.250</i>  | 9.5                 | <i>0.375</i>  | 82.2          | <i>3.240</i>  |
| *T2K-080080-10-9   | 10,000           | 8             | 8.0             | <i>0.315</i>  | 8.0              | <i>0.315</i>  | 9.9                   | <i>0.390</i>  | 13.3                | <i>0.525</i>  | 83.3          | <i>3.280</i>  |
| T2K-095080-25-9    | 25,000           | 5             | 9.5             | <i>0.375</i>  | 8.0              | <i>0.315</i>  | 12.2                  | <i>0.480</i>  | 12.7                | <i>0.500</i>  | 64.3          | <i>2.531</i>  |
| T2K-095095-10-9    | 10,000           | 7             | 9.5             | <i>0.375</i>  | 9.5              | <i>0.375</i>  | 11.1                  | <i>0.437</i>  | 12.7                | <i>0.500</i>  | 82.1          | <i>3.230</i>  |
| T2K-127032-10-9    | 10,000           | 5             | 12.7            | <i>0.500</i>  | 3.2              | <i>0.125</i>  | 19.1                  | <i>0.750</i>  | 3.2                 | <i>0.250</i>  | 94.9          | <i>3.736</i>  |
| T2K-127111-10-9    | 10,000           | 5             | 12.7            | <i>0.500</i>  | 11.1             | <i>0.437</i>  | 16.8                  | <i>0.662</i>  | 14.3                | <i>0.563</i>  | 86.0          | <i>3.380</i>  |
| T2K-127127-10-9    | 10,000           | 5             | 12.7            | <i>0.500</i>  | 12.7             | <i>0.500</i>  | 15.9                  | <i>0.625</i>  | 15.9                | <i>0.625</i>  | 82.6          | <i>3.250</i>  |
| *T2K-165051-25-9   | 25,000           | 4             | 16.5            | <i>0.650</i>  | 5.1              | <i>0.200</i>  | 17.8                  | <i>0.700</i>  | 8.3                 | <i>0.325</i>  | 75.8          | <i>2.990</i>  |
| T2K-171171-10-9    | 10,000           | 5             | 17.1            | <i>0.674</i>  | 17.1             | <i>0.674</i>  | 19.7                  | <i>0.774</i>  | 20.3                | <i>0.800</i>  | 101.8         | <i>4.006</i>  |
| *T2K-178095-10-9   | 10,000           | 4             | 17.8            | <i>0.700</i>  | 9.5              | <i>0.375</i>  | 19.1                  | <i>0.750</i>  | 12.7                | <i>0.500</i>  | 80.9          | <i>3.190</i>  |
| *T2K-191064-10-9   | 10,000           | 4             | 19.1            | <i>0.750</i>  | 6.4              | <i>0.250</i>  | 21.6                  | <i>0.850</i>  | 9.5                 | <i>0.375</i>  | 89.9          | <i>3.540</i>  |
| T2K-229064-10-9    | 10,000           | 3             | 22.9            | <i>0.900</i>  | 6.4              | <i>0.250</i>  | 28.6                  | <i>1.125</i>  | 9.5                 | <i>0.375</i>  | 86.0          | <i>3.390</i>  |
| T2K-254045-10-9    | 10,000           | 3             | 25.4            | <i>1.000</i>  | 4.6              | <i>0.180</i>  | 31.8                  | <i>1.250</i>  | 8.5                 | <i>0.333</i>  | 95.3          | <i>3.750</i>  |
| T2K-254064-10-9    | 10,000           | 3             | 25.4            | <i>1.000</i>  | 6.4              | <i>0.250</i>  | 27.9                  | <i>1.100</i>  | 9.5                 | <i>0.375</i>  | 87.3          | <i>3.436</i>  |
| T2K-254097-10-9    | 10,000           | 3             | 25.4            | <i>1.000</i>  | 9.7              | <i>0.380</i>  | 27.9                  | <i>1.100</i>  | 12.7                | <i>0.500</i>  | 87.4          | <i>3.440</i>  |
| T2K-254127-10-9    | 10,000           | 3             | 25.4            | <i>1.000</i>  | 12.7             | <i>0.500</i>  | 27.9                  | <i>1.100</i>  | 16.9                | <i>0.666</i>  | 87.4          | <i>3.440</i>  |
| T2K-254254-10-9    | 10,000           | 3             | 25.4            | <i>1.000</i>  | 25.4             | <i>1.000</i>  | 27.9                  | <i>1.100</i>  | 28.6                | <i>1.125</i>  | 87.4          | <i>3.440</i>  |
| *T2K-305047-10-9   | 10,000           | 2             | 30.5            | <i>1.200</i>  | 4.7              | <i>0.185</i>  | 33.0                  | <i>1.300</i>  | 7.8                 | <i>0.306</i>  | 69.5          | <i>2.736</i>  |
| T2K-318064-10-9    | 10,000           | 1             | 31.8            | <i>1.250</i>  | 6.4              | <i>0.250</i>  | N/A                   | N/A           | 9.5                 | <i>0.375</i>  | 37.9          | <i>1.490</i>  |
| T2K-381020-10-9    | 10,000           | 1             | 38.1            | <i>1.500</i>  | 2.0              | <i>0.080</i>  | N/A                   | N/A           | 10.7                | <i>0.423</i>  | 44.1          | <i>1.740</i>  |
| T2K-381064-10-9    | 10,000           | 1             | 38.1            | <i>1.500</i>  | 6.4              | <i>0.250</i>  | N/A                   | N/A           | 9.5                 | <i>0.375</i>  | 44.5          | <i>1.750</i>  |
| *T2K-381127-5-9    | 5,000            | 2             | 38.1            | <i>1.500</i>  | 12.7             | <i>0.500</i>  | 44.2                  | <i>1.738</i>  | 15.9                | <i>0.625</i>  | 88.2          | <i>3.472</i>  |
| T2K-381381-2-5-9   | 2,500            | 2             | 38.1            | <i>1.500</i>  | 38.1             | <i>1.500</i>  | 44.5                  | <i>1.750</i>  | 40.8                | <i>1.607</i>  | 88.9          | <i>3.500</i>  |
| T2K-445064-10-9    | 10,000           | 1             | 44.5            | <i>1.750</i>  | 6.4              | <i>0.250</i>  | N/A                   | N/A           | 9.5                 | <i>0.375</i>  | 50.4          | <i>1.986</i>  |
| T2K-445102-5-9     | 5,000            | 1             | 44.5            | <i>1.750</i>  | 10.2             | <i>0.400</i>  | N/A                   | N/A           | 12.7                | <i>0.500</i>  | 50.4          | <i>1.386</i>  |
| T2K-508064-10-9    | 10,000           | 1             | 50.8            | <i>2.000</i>  | 6.4              | <i>0.250</i>  | N/A                   | N/A           | 9.5                 | <i>0.375</i>  | 56.9          | <i>2.240</i>  |
| T2K-508091-5-9     | 5,000            | 1             | 50.8            | <i>2.000</i>  | 9.1              | <i>0.358</i>  | N/A                   | N/A           | 12.2                | <i>0.480</i>  | 57.2          | <i>2.250</i>  |
| T2K-508095-5-9     | 5,000            | 1             | 50.8            | <i>2.000</i>  | 9.5              | <i>0.375</i>  | N/A                   | N/A           | 12.7                | <i>0.500</i>  | 57.2          | <i>2.250</i>  |
| T2K-508127-5-9     | 5,000            | 1             | 50.8            | <i>2.000</i>  | 12.7             | <i>0.500</i>  | N/A                   | N/A           | 15.9                | <i>0.625</i>  | 56.9          | <i>2.240</i>  |

\* NOTE: Kapton®/polyimide labels not compatible with T200 Printers

**TSK White polyimide labels**

**Ordering information**



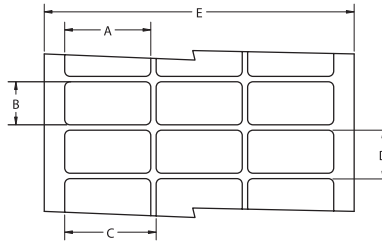
**Product dimensions**

| Product order code | Package quantity | Labels across | Label width (A) |               | Label height (B) |               | Horizontal repeat (C) |               | Vertical repeat (D) |               | Web width (E) |               |
|--------------------|------------------|---------------|-----------------|---------------|------------------|---------------|-----------------------|---------------|---------------------|---------------|---------------|---------------|
|                    |                  |               | mm              | <i>inches</i> | mm               | <i>inches</i> | mm                    | <i>inches</i> | mm                  | <i>inches</i> | mm            | <i>inches</i> |
| TSK-044033-10-9    | 10,000           | 20            | 4.4             | <i>0.170</i>  | 3.3              | <i>0.130</i>  | 4.4                   | <i>0.170</i>  | 9.5                 | <i>0.375</i>  | 92.4          | <i>3.636</i>  |
| TSK-064064-25-9    | 25,000           | 12            | 6.4             | <i>0.250</i>  | 6.4              | <i>0.250</i>  | 6.4                   | <i>0.250</i>  | 9.5                 | <i>0.375</i>  | 82.2          | <i>3.240</i>  |
| *TSK-080080-10-9   | 10,000           | 8             | 8.0             | <i>0.315</i>  | 8.0              | <i>0.315</i>  | 9.9                   | <i>0.390</i>  | 13.3                | <i>0.525</i>  | 83.3          | <i>3.280</i>  |
| TSK-095080-25-9    | 25,000           | 5             | 9.5             | <i>0.375</i>  | 8.0              | <i>0.315</i>  | 12.2                  | <i>0.480</i>  | 12.7                | <i>0.500</i>  | 64.3          | <i>2.531</i>  |
| TSK-095095-10-9    | 10,000           | 7             | 9.5             | <i>0.375</i>  | 9.5              | <i>0.375</i>  | 11.1                  | <i>0.437</i>  | 12.7                | <i>0.500</i>  | 82.1          | <i>3.230</i>  |
| TSK-127032-10-9    | 10,000           | 5             | 12.7            | <i>0.500</i>  | 3.2              | <i>0.125</i>  | 19.1                  | <i>0.750</i>  | 3.2                 | <i>0.250</i>  | 94.9          | <i>3.736</i>  |
| TSK-127111-10-9    | 10,000           | 5             | 12.7            | <i>0.500</i>  | 11.1             | <i>0.437</i>  | 16.8                  | <i>0.662</i>  | 14.3                | <i>0.563</i>  | 86.0          | <i>3.380</i>  |
| TSK-127127-10-9    | 10,000           | 5             | 12.7            | <i>0.500</i>  | 12.7             | <i>0.500</i>  | 15.9                  | <i>0.625</i>  | 15.9                | <i>0.625</i>  | 82.6          | <i>3.250</i>  |
| TSK-165051-25-9    | 25,000           | 4             | 16.5            | <i>0.650</i>  | 5.1              | <i>0.200</i>  | 17.8                  | <i>0.700</i>  | 8.3                 | <i>0.325</i>  | 75.8          | <i>2.990</i>  |
| TSK-171171-10-9    | 10,000           | 5             | 17.1            | <i>0.674</i>  | 17.1             | <i>0.674</i>  | 19.7                  | <i>0.774</i>  | 20.3                | <i>0.800</i>  | 101.8         | <i>4.006</i>  |
| TSK-178095-10-9    | 10,000           | 4             | 17.8            | <i>0.700</i>  | 9.5              | <i>0.375</i>  | 19.1                  | <i>0.750</i>  | 12.7                | <i>0.500</i>  | 80.9          | <i>3.190</i>  |
| *TSK-191064-10-9   | 10,000           | 4             | 19.1            | <i>0.750</i>  | 6.4              | <i>0.250</i>  | 21.6                  | <i>0.850</i>  | 9.5                 | <i>0.375</i>  | 89.9          | <i>3.540</i>  |
| TSK-229064-10-9    | 10,000           | 3             | 22.9            | <i>0.900</i>  | 6.4              | <i>0.250</i>  | 28.6                  | <i>1.125</i>  | 9.5                 | <i>0.375</i>  | 86.0          | <i>3.390</i>  |
| TSK-254045-10-9    | 10,000           | 3             | 25.4            | <i>1.000</i>  | 4.6              | <i>0.180</i>  | 31.8                  | <i>1.250</i>  | 8.5                 | <i>0.333</i>  | 95.3          | <i>3.750</i>  |
| TSK-254064-10-9    | 10,000           | 3             | 25.4            | <i>1.000</i>  | 6.4              | <i>0.250</i>  | 27.9                  | <i>1.100</i>  | 9.5                 | <i>0.375</i>  | 87.3          | <i>3.436</i>  |
| TSK-254097-10-9    | 10,000           | 3             | 25.4            | <i>1.000</i>  | 9.7              | <i>0.380</i>  | 27.9                  | <i>1.100</i>  | 12.7                | <i>0.500</i>  | 87.4          | <i>3.440</i>  |
| TSK-254127-10-9    | 10,000           | 3             | 25.4            | <i>1.000</i>  | 12.7             | <i>0.500</i>  | 27.9                  | <i>1.100</i>  | 16.9                | <i>0.666</i>  | 87.4          | <i>3.440</i>  |
| TSK-254254-10-9    | 10,000           | 3             | 25.4            | <i>1.000</i>  | 25.4             | <i>1.000</i>  | 27.9                  | <i>1.100</i>  | 28.6                | <i>1.125</i>  | 87.4          | <i>3.440</i>  |
| *TSK-305047-10-9   | 10,000           | 2             | 30.5            | <i>1.200</i>  | 4.7              | <i>0.185</i>  | 33.0                  | <i>1.300</i>  | 7.8                 | <i>0.306</i>  | 69.5          | <i>2.736</i>  |
| TSK-318064-10-9    | 10,000           | 1             | 31.8            | <i>1.250</i>  | 6.4              | <i>0.250</i>  | N/A                   | N/A           | 9.5                 | <i>0.375</i>  | 37.9          | <i>1.490</i>  |
| TSK-381020-10-9    | 10,000           | 1             | 38.1            | <i>1.500</i>  | 2.0              | <i>0.080</i>  | N/A                   | N/A           | 10.7                | <i>0.423</i>  | 44.1          | <i>1.740</i>  |
| TSK-381064-10-9    | 10,000           | 1             | 38.1            | <i>1.500</i>  | 6.4              | <i>0.250</i>  | N/A                   | N/A           | 9.5                 | <i>0.375</i>  | 44.5          | <i>1.750</i>  |
| *TSK-381127-5-9    | 5,000            | 2             | 38.1            | <i>1.500</i>  | 12.7             | <i>0.500</i>  | 44.2                  | <i>1.738</i>  | 15.9                | <i>0.625</i>  | 88.2          | <i>3.472</i>  |
| TSK-381381-2-5-9   | 2,500            | 2             | 38.1            | <i>1.500</i>  | 38.1             | <i>1.500</i>  | 44.5                  | <i>1.750</i>  | 40.8                | <i>1.607</i>  | 88.9          | <i>3.500</i>  |
| TSK-445064-10-9    | 10,000           | 1             | 44.5            | <i>1.750</i>  | 6.4              | <i>0.250</i>  | N/A                   | N/A           | 9.5                 | <i>0.375</i>  | 50.4          | <i>1.986</i>  |
| TSK-445102-5-9     | 5,000            | 1             | 44.5            | <i>1.750</i>  | 10.2             | <i>0.400</i>  | N/A                   | N/A           | 12.7                | <i>0.500</i>  | 50.4          | <i>1.386</i>  |
| TSK-508064-10-9    | 10,000           | 1             | 50.8            | <i>2.000</i>  | 9.5              | <i>0.375</i>  | N/A                   | N/A           | 12.7                | <i>0.500</i>  | 57.2          | <i>2.250</i>  |
| TSK-508095-10-9    | 5,000            | 1             | 50.8            | <i>2.000</i>  | 12.7             | <i>0.500</i>  | N/A                   | N/A           | 15.9                | <i>0.625</i>  | 56.9          | <i>2.240</i>  |
| TSK-508127-5-9     | 5,000            | 1             | 50.8            | <i>2.000</i>  | 12.7             | <i>0.500</i>  | N/A                   | N/A           | 15.9                | <i>0.625</i>  | 56.9          | <i>2.240</i>  |

\* NOTE: Kapton®/polyimide labels not compatible with T200 Printers

## KTT Tan Kapton® labels

### Ordering information



### Product dimensions

| Product order code | Package quantity | Labels across | Label width (A) |               | Label height (B) |               | Horizontal repeat (C) |               | Vertical repeat (D) |               | Web width (E) |               |
|--------------------|------------------|---------------|-----------------|---------------|------------------|---------------|-----------------------|---------------|---------------------|---------------|---------------|---------------|
|                    |                  |               | mm              | <i>inches</i> | mm               | <i>inches</i> | mm                    | <i>inches</i> | mm                  | <i>inches</i> | mm            | <i>inches</i> |
| KTT-044033-10-1A   | 10,000           | 20            | 4.4             | <i>0.170</i>  | 3.3              | <i>0.130</i>  | 4.4                   | <i>0.170</i>  | 9.5                 | <i>0.375</i>  | 92.4          | <i>3.636</i>  |
| KTT-064064-25-1A   | 25,000           | 12            | 6.4             | <i>0.250</i>  | 6.4              | <i>0.250</i>  | 6.4                   | <i>0.250</i>  | 9.5                 | <i>0.375</i>  | 82.2          | <i>3.240</i>  |
| *KTT-080080-10-1A  | 10,000           | 8             | 8.0             | <i>0.315</i>  | 8.0              | <i>0.315</i>  | 9.9                   | <i>0.390</i>  | 13.3                | <i>0.525</i>  | 83.3          | <i>3.280</i>  |
| KTT-095080-25-1A   | 25,000           | 5             | 9.5             | <i>0.375</i>  | 8.0              | <i>0.315</i>  | 12.2                  | <i>0.480</i>  | 12.7                | <i>0.500</i>  | 64.3          | <i>2.531</i>  |
| KTT-095095-10-1A   | 10,000           | 7             | 9.5             | <i>0.375</i>  | 9.5              | <i>0.375</i>  | 11.1                  | <i>0.437</i>  | 12.7                | <i>0.500</i>  | 82.1          | <i>3.230</i>  |
| KTT-127032-10-1A   | 10,000           | 5             | 12.7            | <i>0.500</i>  | 3.2              | <i>0.125</i>  | 19.1                  | <i>0.750</i>  | 3.2                 | <i>0.250</i>  | 94.9          | <i>3.736</i>  |
| KTT-127111-10-1A   | 10,000           | 5             | 12.7            | <i>0.500</i>  | 11.1             | <i>0.437</i>  | 16.8                  | <i>0.662</i>  | 14.3                | <i>0.563</i>  | 86.0          | <i>3.380</i>  |
| KTT-127127-10-1A   | 10,000           | 5             | 12.7            | <i>0.500</i>  | 12.7             | <i>0.500</i>  | 15.9                  | <i>0.625</i>  | 15.9                | <i>0.625</i>  | 82.6          | <i>3.250</i>  |
| *KTT-165051-25-1A  | 25,000           | 4             | 16.5            | <i>0.650</i>  | 5.1              | <i>0.200</i>  | 17.8                  | <i>0.700</i>  | 8.3                 | <i>0.325</i>  | 75.8          | <i>2.990</i>  |
| KTT-171171-10-1A   | 10,000           | 5             | 17.1            | <i>0.674</i>  | 17.1             | <i>0.674</i>  | 19.7                  | <i>0.774</i>  | 20.3                | <i>0.800</i>  | 101.8         | <i>4.006</i>  |
| *KTT-178095-10-1A  | 10,000           | 4             | 17.8            | <i>0.700</i>  | 9.5              | <i>0.375</i>  | 19.1                  | <i>0.750</i>  | 12.7                | <i>0.500</i>  | 80.9          | <i>3.190</i>  |
| *KTT-191064-10-1A  | 10,000           | 4             | 19.1            | <i>0.750</i>  | 6.4              | <i>0.250</i>  | 21.6                  | <i>0.850</i>  | 9.5                 | <i>0.375</i>  | 89.9          | <i>3.540</i>  |
| KTT-229064-10-1A   | 10,000           | 3             | 22.9            | <i>0.900</i>  | 6.4              | <i>0.250</i>  | 28.6                  | <i>1.125</i>  | 9.5                 | <i>0.375</i>  | 86.0          | <i>3.390</i>  |
| KTT-254045-10-1A   | 10,000           | 3             | 25.4            | <i>1.000</i>  | 4.6              | <i>0.180</i>  | 31.8                  | <i>1.250</i>  | 8.5                 | <i>0.333</i>  | 95.3          | <i>3.750</i>  |
| KTT-254064-10-1A   | 10,000           | 3             | 25.4            | <i>1.000</i>  | 6.4              | <i>0.250</i>  | 27.9                  | <i>1.100</i>  | 9.5                 | <i>0.375</i>  | 87.3          | <i>3.436</i>  |
| KTT-254097-10-1A   | 10,000           | 3             | 25.4            | <i>1.000</i>  | 9.7              | <i>0.380</i>  | 27.9                  | <i>1.100</i>  | 12.7                | <i>0.500</i>  | 87.4          | <i>3.440</i>  |
| KTT-254127-10-1A   | 10,000           | 3             | 25.4            | <i>1.000</i>  | 12.7             | <i>0.500</i>  | 27.9                  | <i>1.100</i>  | 16.9                | <i>0.666</i>  | 87.4          | <i>3.440</i>  |
| KTT-254254-10-1A   | 10,000           | 3             | 25.4            | <i>1.000</i>  | 25.4             | <i>1.000</i>  | 27.9                  | <i>1.100</i>  | 28.6                | <i>1.125</i>  | 87.4          | <i>3.440</i>  |
| *KTT-305047-10-1A  | 10,000           | 2             | 30.5            | <i>1.200</i>  | 4.7              | <i>0.185</i>  | 33.0                  | <i>1.300</i>  | 7.8                 | <i>0.306</i>  | 69.5          | <i>2.736</i>  |
| KTT-318064-10-1A   | 10,000           | 1             | 31.8            | <i>1.250</i>  | 6.4              | <i>0.250</i>  | N/A                   | N/A           | 9.5                 | <i>0.375</i>  | 37.9          | <i>1.490</i>  |
| KTT-381020-10-1A   | 10,000           | 1             | 38.1            | <i>1.500</i>  | 2.0              | <i>0.080</i>  | N/A                   | N/A           | 10.7                | <i>0.423</i>  | 44.1          | <i>1.740</i>  |
| KTT-381064-10-1A   | 10,000           | 1             | 38.1            | <i>1.500</i>  | 6.4              | <i>0.250</i>  | N/A                   | N/A           | 9.5                 | <i>0.375</i>  | 44.5          | <i>1.750</i>  |
| *KTT-381127-5-1A   | 5,000            | 2             | 38.1            | <i>1.500</i>  | 12.7             | <i>0.500</i>  | 44.2                  | <i>1.738</i>  | 15.9                | <i>0.625</i>  | 88.2          | <i>3.472</i>  |
| KTT-381381-2.5-1A  | 2,500            | 2             | 38.1            | <i>1.500</i>  | 38.1             | <i>1.500</i>  | 44.5                  | <i>1.750</i>  | 40.8                | <i>1.607</i>  | 88.9          | <i>3.500</i>  |
| KTT-445064-10-1A   | 10,000           | 1             | 44.5            | <i>1.750</i>  | 6.4              | <i>0.250</i>  | N/A                   | N/A           | 9.5                 | <i>0.375</i>  | 50.4          | <i>1.986</i>  |
| KTT-445102-5-1A    | 5,000            | 1             | 44.5            | <i>1.750</i>  | 10.2             | <i>0.400</i>  | N/A                   | N/A           | 12.7                | <i>0.500</i>  | 50.4          | <i>1.986</i>  |
| KTT-508064-10-1A   | 10,000           | 1             | 50.8            | <i>2.000</i>  | 6.4              | <i>0.250</i>  | N/A                   | N/A           | 9.5                 | <i>0.375</i>  | 56.9          | <i>2.240</i>  |
| KTT-508095-5-1A    | 5,000            | 1             | 50.8            | <i>2.000</i>  | 9.5              | <i>0.375</i>  | N/A                   | N/A           | 12.7                | <i>0.500</i>  | 57.2          | <i>2.250</i>  |
| KTT-508127-5-1A    | 5,000            | 1             | 50.8            | <i>2.000</i>  | 12.7             | <i>0.500</i>  | N/A                   | N/A           | 15.9                | <i>0.625</i>  | 56.9          | <i>2.240</i>  |

\*NOTE: Kapton®/polyimide labels not compatible with T200 Printers

Компания «Life Electronics» занимается поставками электронных компонентов импортного и отечественного производства от производителей и со складов крупных дистрибьюторов Европы, Америки и Азии.

С конца 2013 года компания активно расширяет линейку поставок компонентов по направлению коаксиальный кабель, кварцевые генераторы и конденсаторы (керамические, пленочные, электролитические), за счёт заключения дистрибьюторских договоров

Мы предлагаем:

- Конкурентоспособные цены и скидки постоянным клиентам.
- Специальные условия для постоянных клиентов.
- Подбор аналогов.
- Поставку компонентов в любых объемах, удовлетворяющих вашим потребностям.
- Приемлемые сроки поставки, возможна ускоренная поставка.
- Доставку товара в любую точку России и стран СНГ.
- Комплексную поставку.
- Работу по проектам и поставку образцов.
- Формирование склада под заказчика.
- Сертификаты соответствия на поставляемую продукцию (по желанию клиента).
- Тестирование поставляемой продукции.
- Поставку компонентов, требующих военную и космическую приемку.
- Входной контроль качества.
- Наличие сертификата ISO.

В составе нашей компании организован Конструкторский отдел, призванный помогать разработчикам, и инженерам.

Конструкторский отдел помогает осуществить:

- Регистрацию проекта у производителя компонентов.
- Техническую поддержку проекта.
- Защиту от снятия компонента с производства.
- Оценку стоимости проекта по компонентам.
- Изготовление тестовой платы монтаж и пусконаладочные работы.



Тел: +7 (812) 336 43 04 (многоканальный)

Email: [org@lifeelectronics.ru](mailto:org@lifeelectronics.ru)