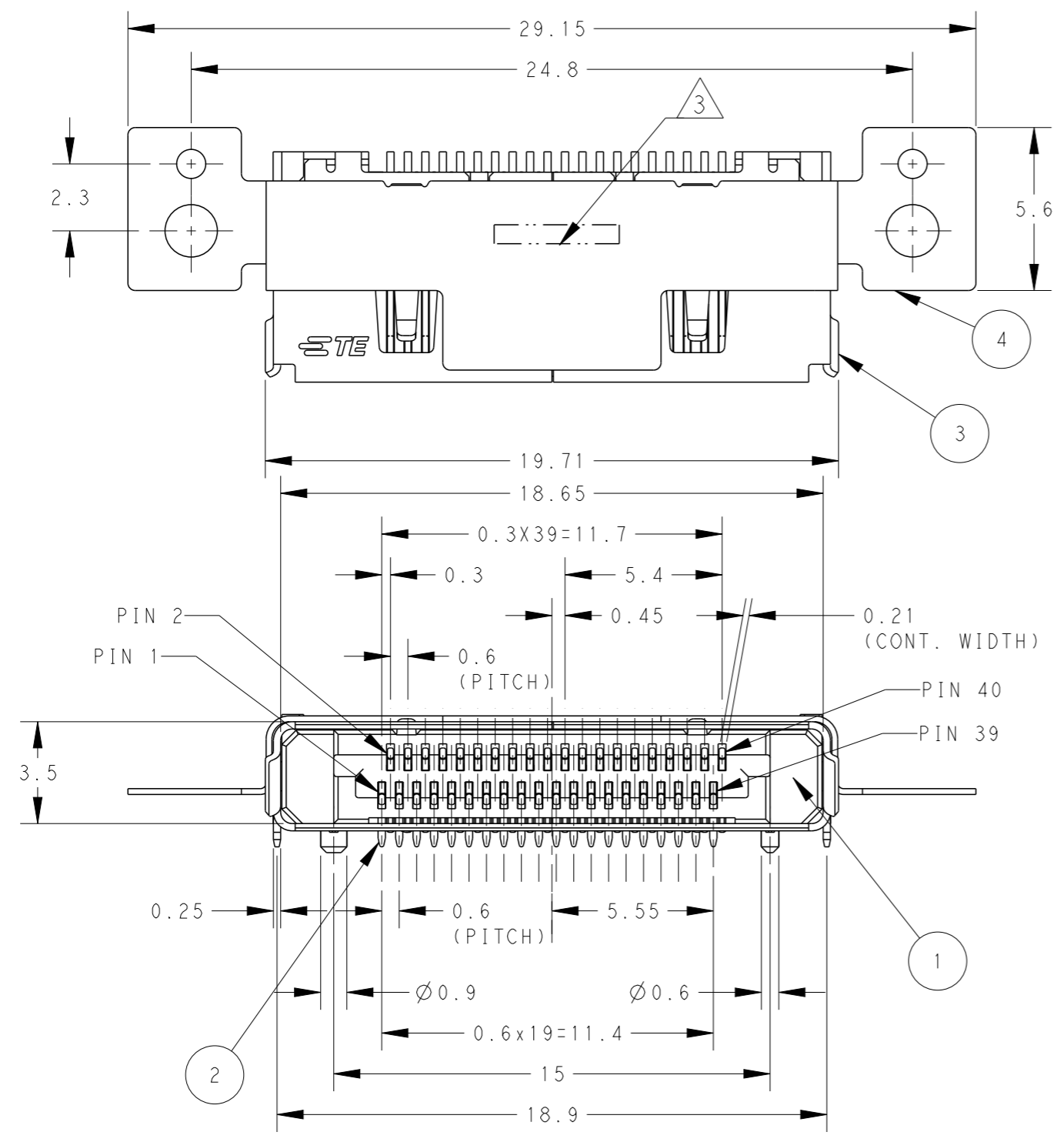


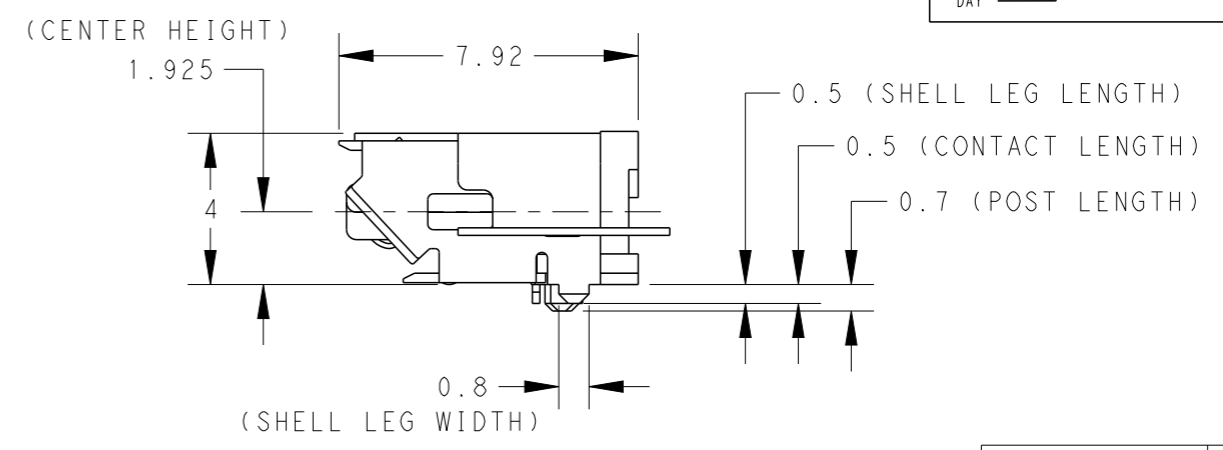
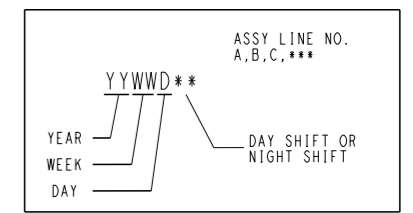
THIS DRAWING IS UNPUBLISHED. RELEASED FOR PUBLICATION 20  
 © COPYRIGHT 20 BY - ALL RIGHTS RESERVED.

LOC	DIST	REVISIONS			
P	LTR	DESCRIPTION	DATE	DWN	APVD
	A	RELEASED	25NOV2011	T.K	H.K
	A1	REVISED (ECR-12-003980)	01MAR2012	T.K	H.K



2129364-1, 1-2129364-1; AS SHOWN

- ① MATERIAL:  
 HOUSING: THERMO-PLASTIC (UL94V-0, BLACK).  
 CONTACT: COPPER ALLOY.  
 SHELL: STAINLESS STEEL.  
 BRACKET: STAINLESS STEEL.
- ② FINISH:  
 CONTACT: ALL OVER 2um MIN. Ni UNDER PLATING.  
 0.254um MIN. Au PLATING ON CONTACT AREA.  
 1~3um Tin PLATING ON TINE AREA.  
 SHELL: ALL OVER 1.3um MIN. Ni UNDER PLATING (FOR 2129364-1, -2).  
 ALL OVER 0.5um MIN. BLACK-Ni UNDER PLATING (FOR 1-2129364-1).
- ③ DATE CODE



WITH BRACKET

BLACK-Ni	1-2129364-1
Ni	2129364-1
FINISH	PART NUMBER
1	BRACKET ④
1	SHELL ③
40	CONTACT ②
1	HOUSING ①
Q'TY	NAME ITEM

VIEW A

THIS DRAWING IS A CONTROLLED DOCUMENT.		DWN T. KUO 25NOV2011	TE Connectivity RECEPTACLE ASSY, 0.6mm PITCH CHAMP DOCKING CONNECTOR, 40POS			
DIMENSIONS: mm		CHK V. PENG 25NOV2011				
TOLERANCES UNLESS OTHERWISE SPECIFIED:		APVD H. KODAMA 25NOV2011				
0 PLC ± 1 PLC ± ±0.25 2 PLC ± ±3° 3 PLC ± 4 PLC ± ANGLES ±		PRODUCT SPEC 108-99033				
MATERIAL ①	FINISH ②	APPLICATION SPEC -	SIZE A3	CAGE CODE 00779	DRAWING NO C-2129364	RESTRICTED TO -
CUSTOMER DRAWING			WEIGHT 1.08g	SCALE 5:1	SHEET 1 OF 6	REV A1

THIS DRAWING IS UNPUBLISHED.

RELEASED FOR PUBLICATION

20

© COPYRIGHT 20 BY -

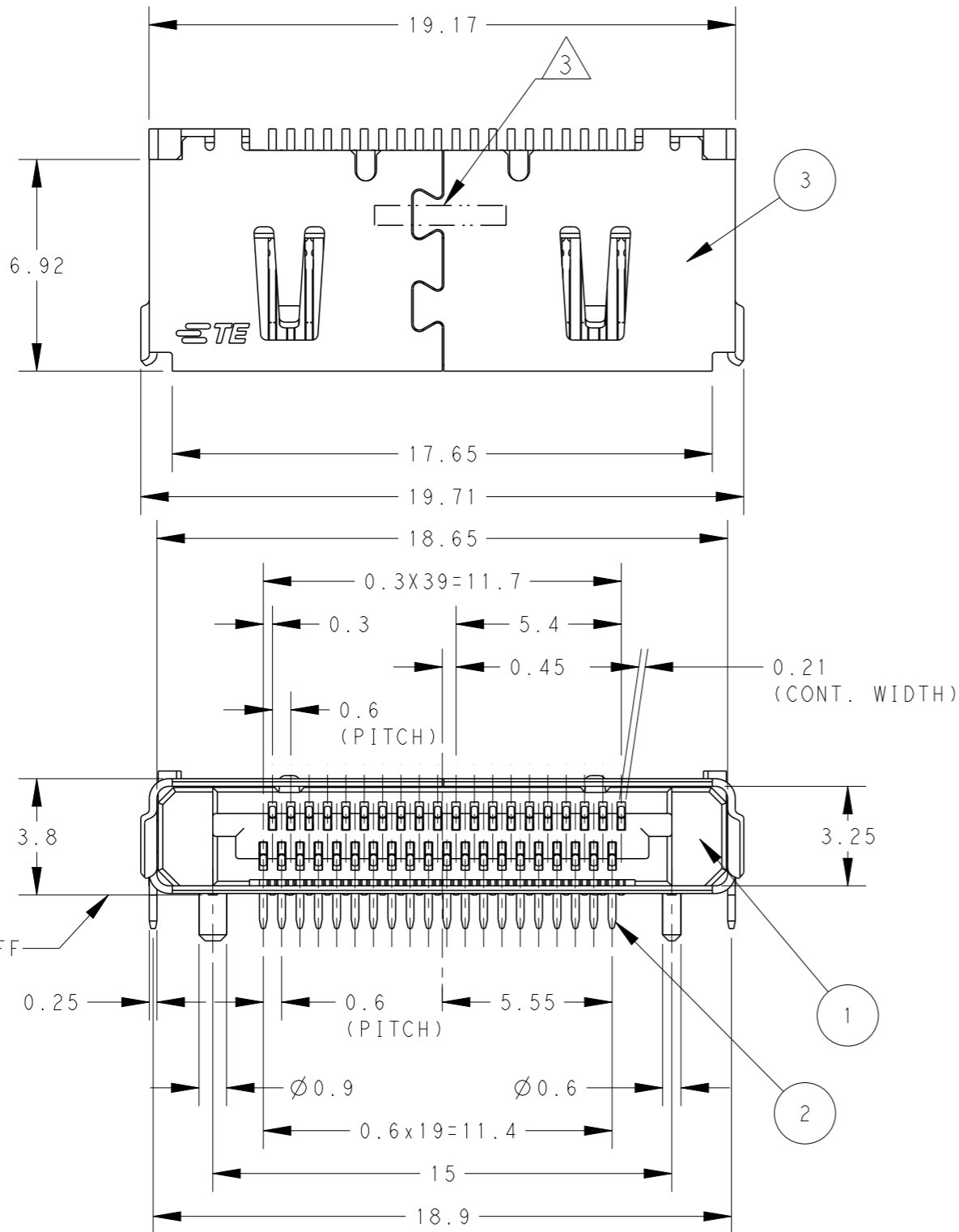
ALL RIGHTS RESERVED.

LOC  
DW

DIST

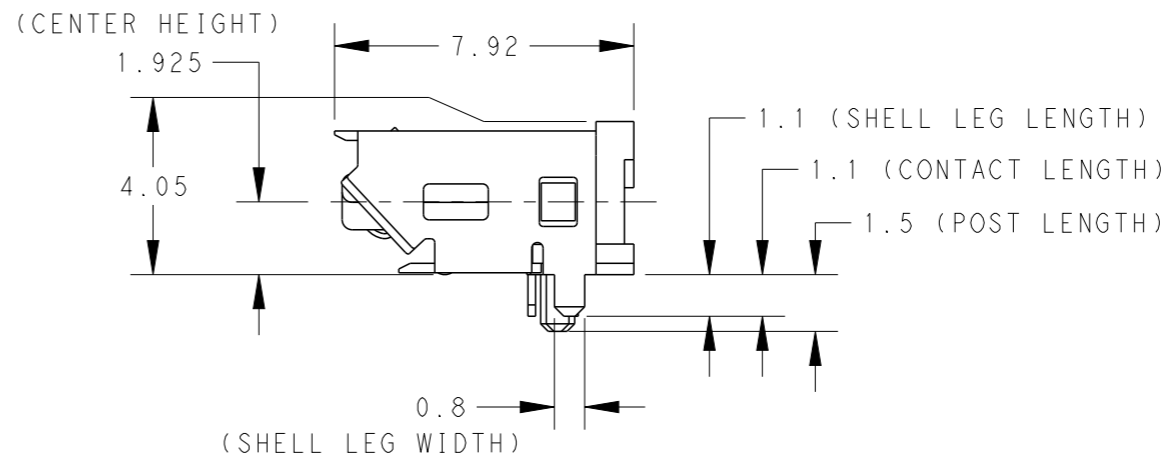
REVISIONS

P	LTR	DESCRIPTION	DATE	DWN	APVD
-	-	SEE SHEET 1	-	-	-



2129364-2; AS SHOWN

WITHOUT BRACKET



Q'TY	NAME	ITEM
1	SHELL	③
40	CONTACT	②
1	HOUSING	①

THIS DRAWING IS A CONTROLLED DOCUMENT.		DWN	-	<b>STE</b> TE Connectivity																				
DIMENSIONS: mm		CHK	-																					
TOLERANCES UNLESS OTHERWISE SPECIFIED:		APVD	-																					
<table border="0"> <tr><td>0 PLC</td><td>±</td><td>±0.25</td></tr> <tr><td>1 PLC</td><td>±</td><td>±0.25</td></tr> <tr><td>2 PLC</td><td>±</td><td>±3°</td></tr> <tr><td>3 PLC</td><td>±</td><td>±3°</td></tr> <tr><td>4 PLC</td><td>±</td><td>±</td></tr> <tr><td>ANGLES</td><td>±</td><td>±</td></tr> <tr><td>FINISH</td><td>-</td><td>-</td></tr> </table>		0 PLC	±		±0.25	1 PLC	±	±0.25	2 PLC	±	±3°	3 PLC	±	±3°	4 PLC	±	±	ANGLES	±	±	FINISH	-	-	PRODUCT SPEC
0 PLC	±	±0.25																						
1 PLC	±	±0.25																						
2 PLC	±	±3°																						
3 PLC	±	±3°																						
4 PLC	±	±																						
ANGLES	±	±																						
FINISH	-	-																						
MATERIAL		APPLICATION SPEC	-	NAME RECEPTACLE ASSY, 0.6mm PITCH CHAMP DOCKING CONNECTOR, 40POS																				
WEIGHT 0.83g		SIZE	A3	CAGE CODE	00779	DRAWING NO	C-2129364	RESTRICTED TO	-															
CUSTOMER DRAWING		SCALE	5:1	SHEET	2	OF	6	REV	A1															

THIS DRAWING IS UNPUBLISHED.

RELEASED FOR PUBLICATION

20

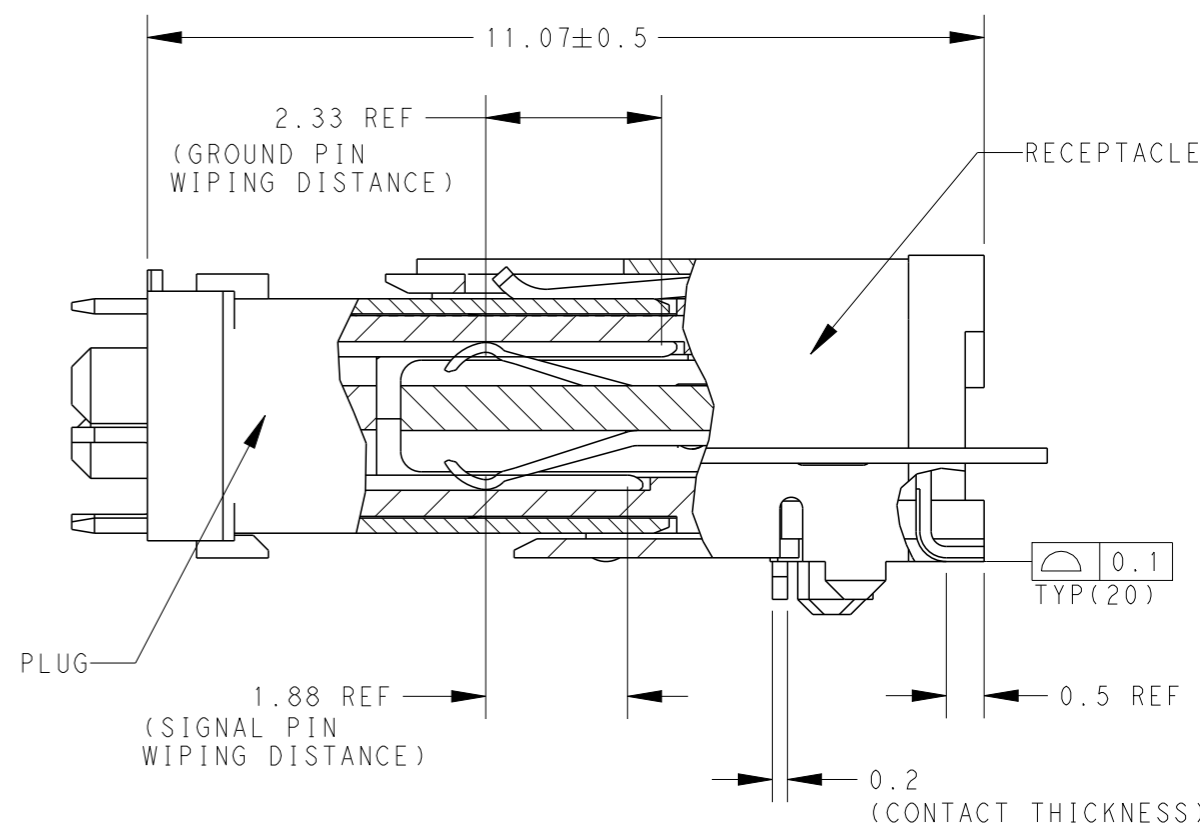
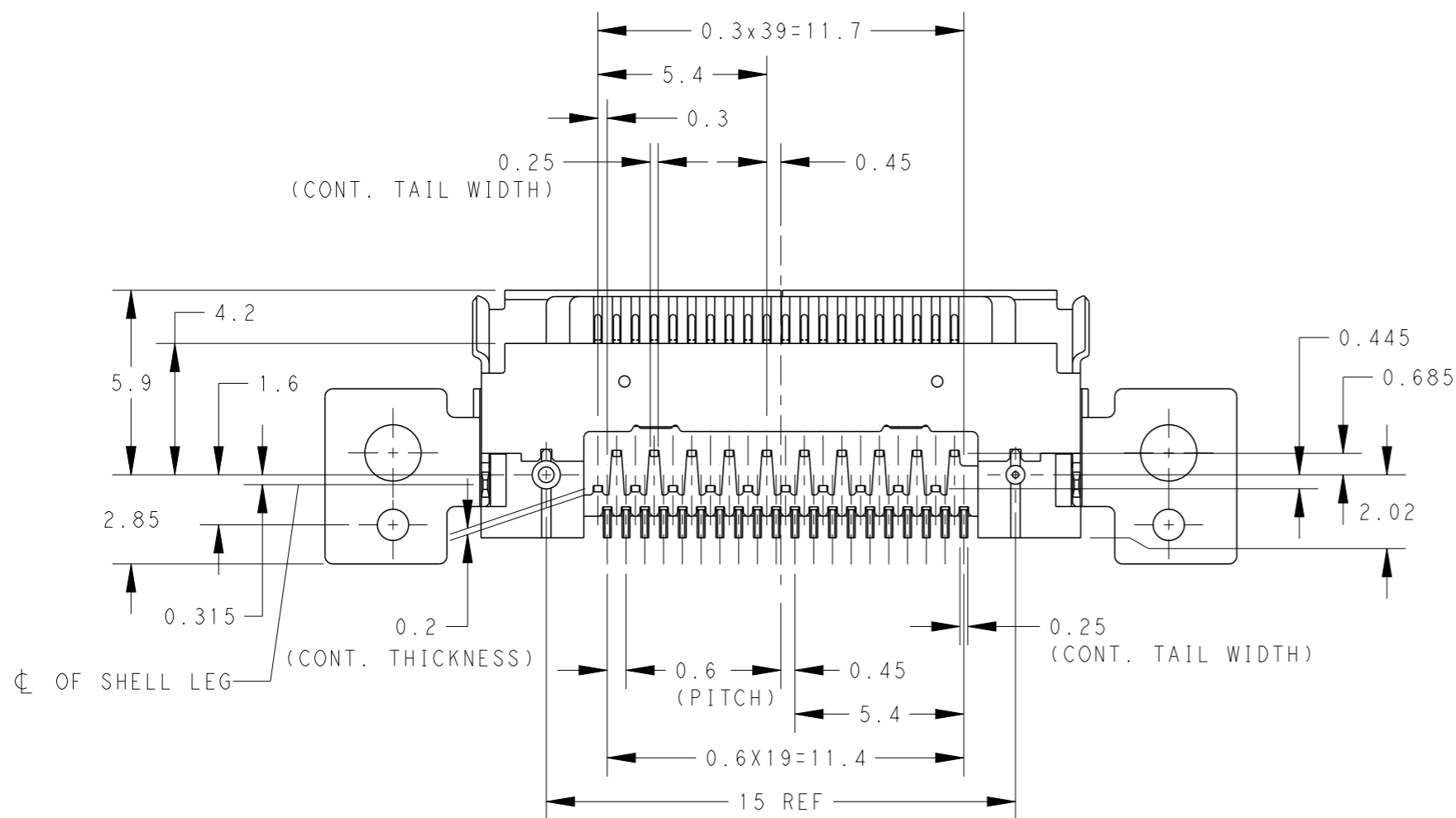
© COPYRIGHT 20 BY -

ALL RIGHTS RESERVED.

LOC DW DIST

REVISIONS

P	LTR	DESCRIPTION	DATE	DWN	APVD
-	-	SEE SHEET 1	-	-	-



MATING CONDITION

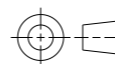
SCALE 10:1

VIEW A  
2129364-2 IS SAME AS 2129364-1

THIS DRAWING IS A CONTROLLED DOCUMENT.

DIMENSIONS:

mm



TOLERANCES UNLESS OTHERWISE SPECIFIED:

0 PLC	±	±0.25
1 PLC	±	±0.25
2 PLC	±	±3°
3 PLC	±	±
4 PLC	±	±
ANGLES	±	±
FINISH	-	-

MATERIAL

DWN	-
CHK	-
APVD	-
PRODUCT SPEC	-
APPLICATION SPEC	-
WEIGHT	-



TE Connectivity

NAME  
RECEPTACLE ASSY, 0.6mm PITCH  
CHAMP DOCKING CONNECTOR, 40POS

SIZE A3 CAGE CODE 00779 DRAWING NO C-2129364

RESTRICTED TO

CUSTOMER DRAWING

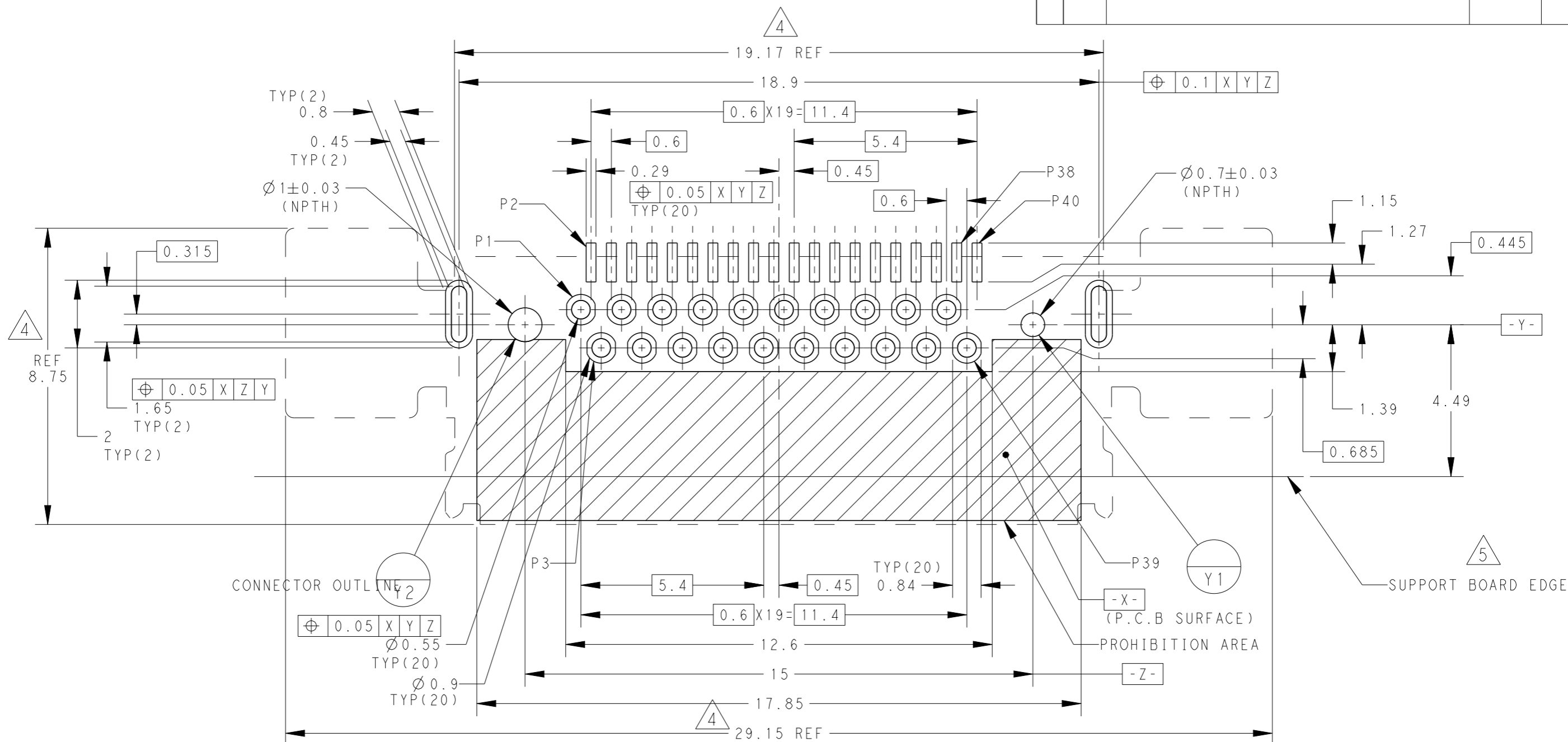
SCALE 5:1

SHEET 3 OF 6

REV A1

P	LTR	DESCRIPTION	DATE	DWN	APVD
-	-	SEE SHEET 1	-	-	-

2129364-2 IS SAME AS 2129364-1



RECOMMENDED P.C. BOARD LAYOUT (TOP VIEW)

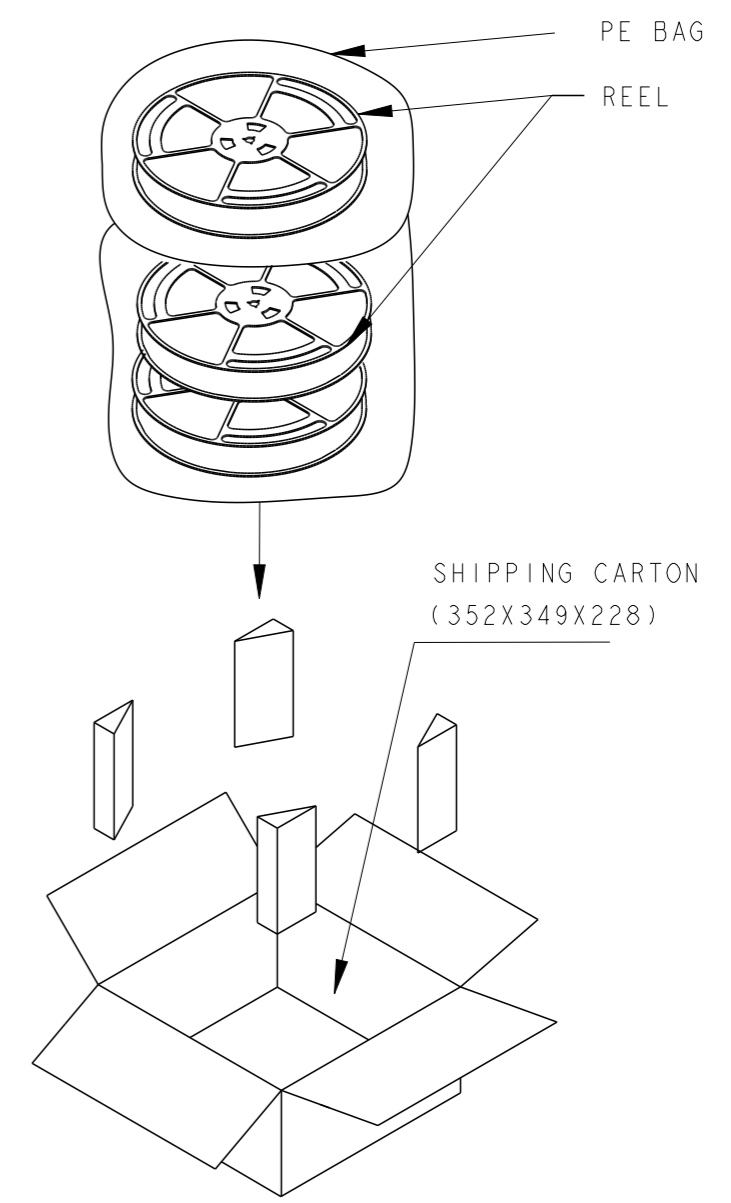
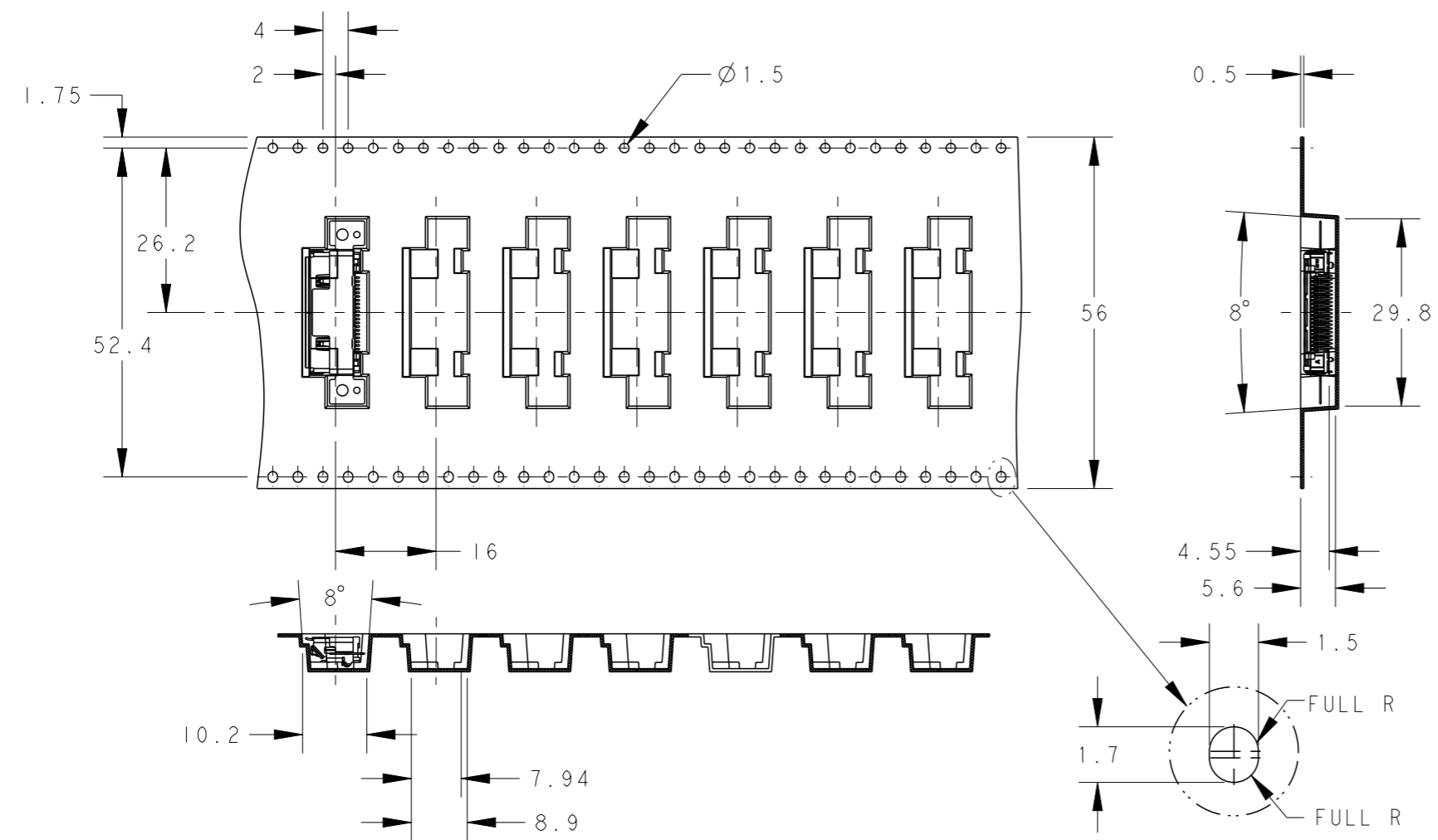
4 CONNECTOR OUTLINE  
5 SUPPORT BOARD EDGE

THIS DRAWING IS A CONTROLLED DOCUMENT.		DWN		 TE Connectivity	
DIMENSIONS: mm		CHK			
TOLERANCES UNLESS OTHERWISE SPECIFIED:		APVD			
0 PLC ±- 1 PLC ±- ±0.05 2 PLC ±- ±3° 3 PLC ±- 4 PLC ±- ANGLES ±- FINISH -		PRODUCT SPEC			
MATERIAL		APPLICATION SPEC		NAME RECEPTACLE ASSY, 0.6mm PITCH CHAMP DOCKING CONNECTOR, 40POS	
		WEIGHT		SIZE CAGE CODE DRAWING NO RESTRICTED TO	
		CUSTOMER DRAWING		A3 00779 C-2129364	
		SCALE 8:1		SHEET 4 OF 6 REV A1	

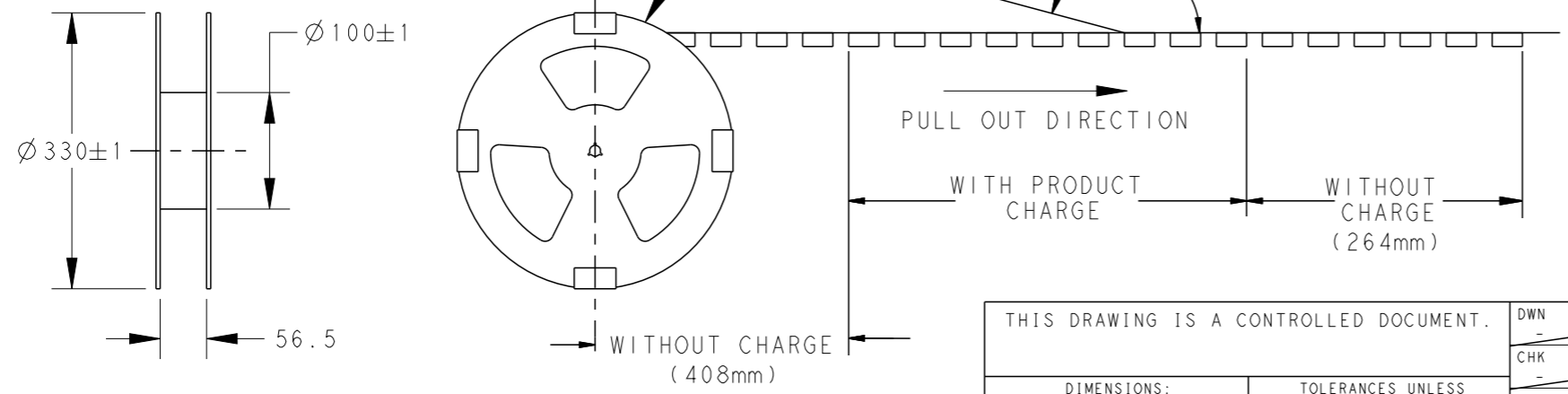
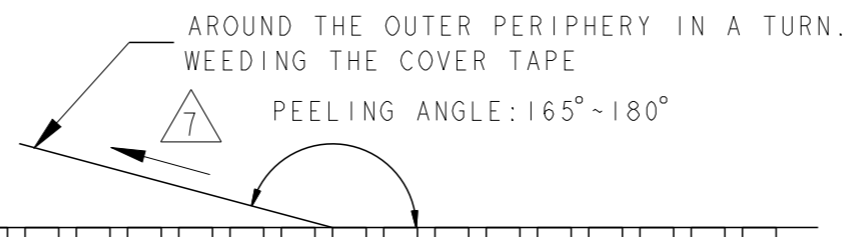
THIS DRAWING IS UNPUBLISHED. RELEASED FOR PUBLICATION 20  
 © COPYRIGHT 20 BY - ALL RIGHTS RESERVED.

LOC DW  
 DIST

REVISIONS					
P	LTR	DESCRIPTION	DATE	DWN	APVD
-	-	SEE SHEET 1	-	-	-



6. PACKING MATERIAL:  
 CARRY TAPE: PS; COLOR: BLACK.  
 COVER TAPE: PET; COLOR: CLEAR.  
 PEELING STRENGTH OF COVER TAPE: 0.2N~1.2N



1-2129364-1	600	3	1800
2129364-1	600	3	1800
P/N	PCS/TAPE	REELS/CARTON	TOTAL QUANTITY

THIS DRAWING IS A CONTROLLED DOCUMENT.

DWN	-
CHK	-
APVD	-
PRODUCT SPEC	-
APPLICATION SPEC	-
WEIGHT	-

**STE** TE Connectivity

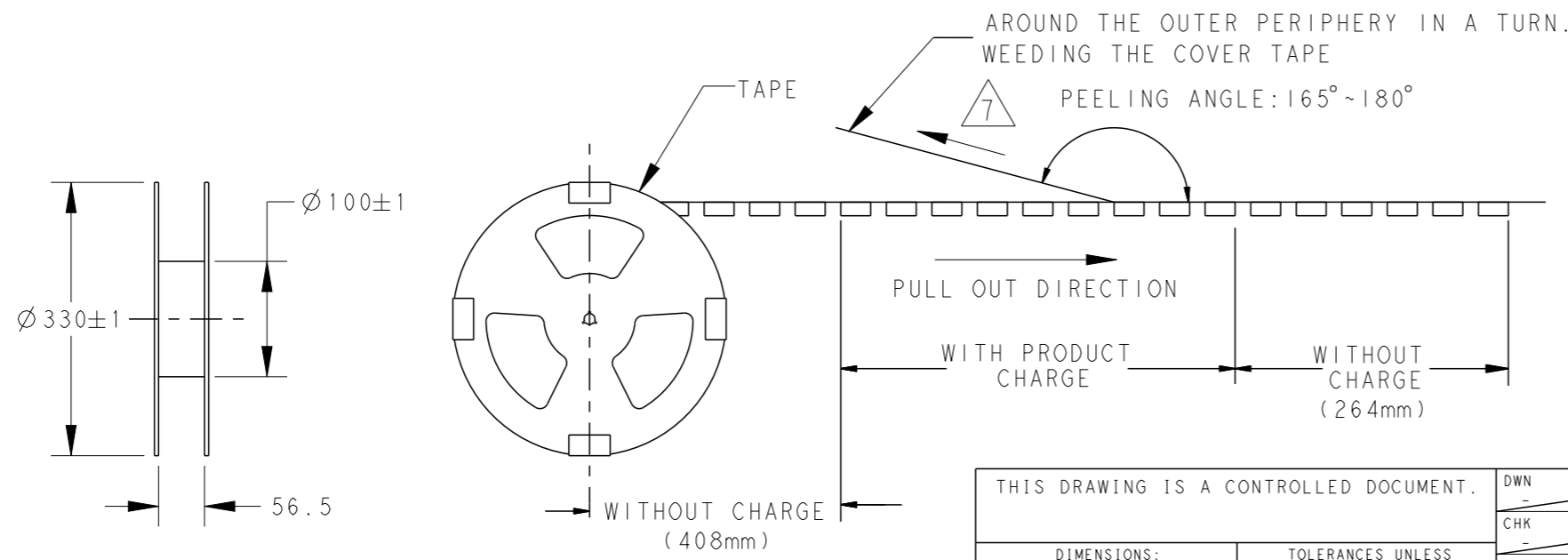
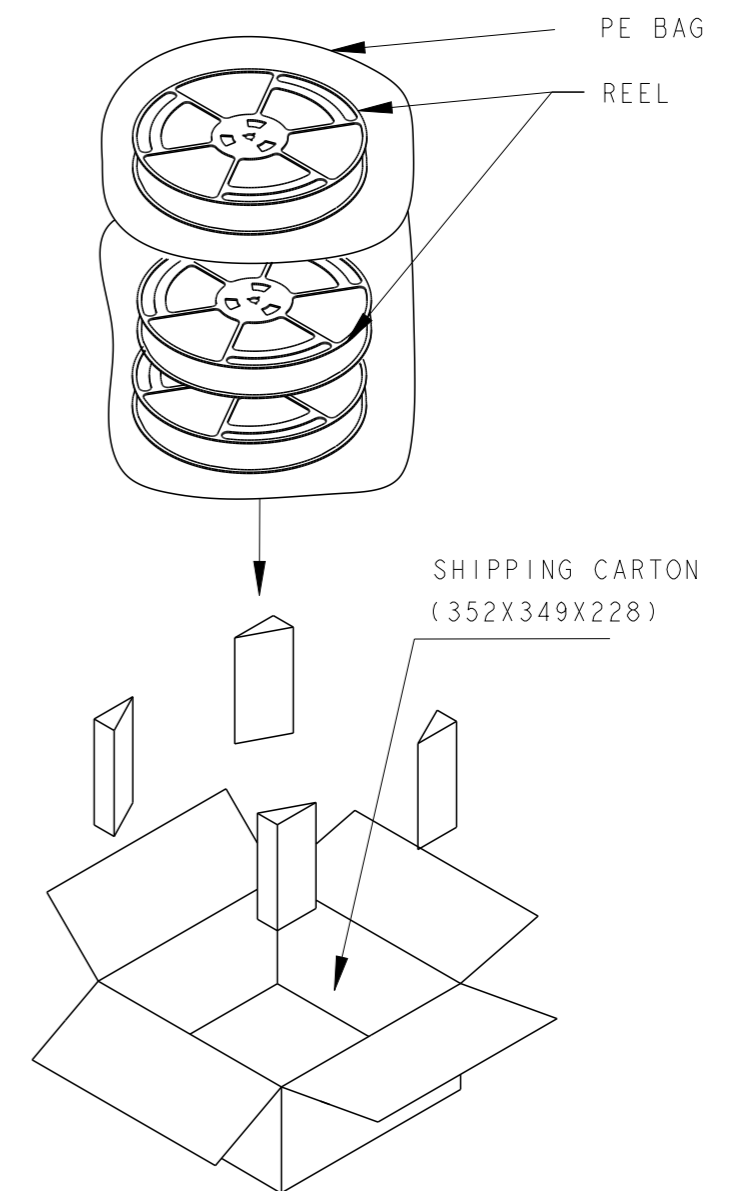
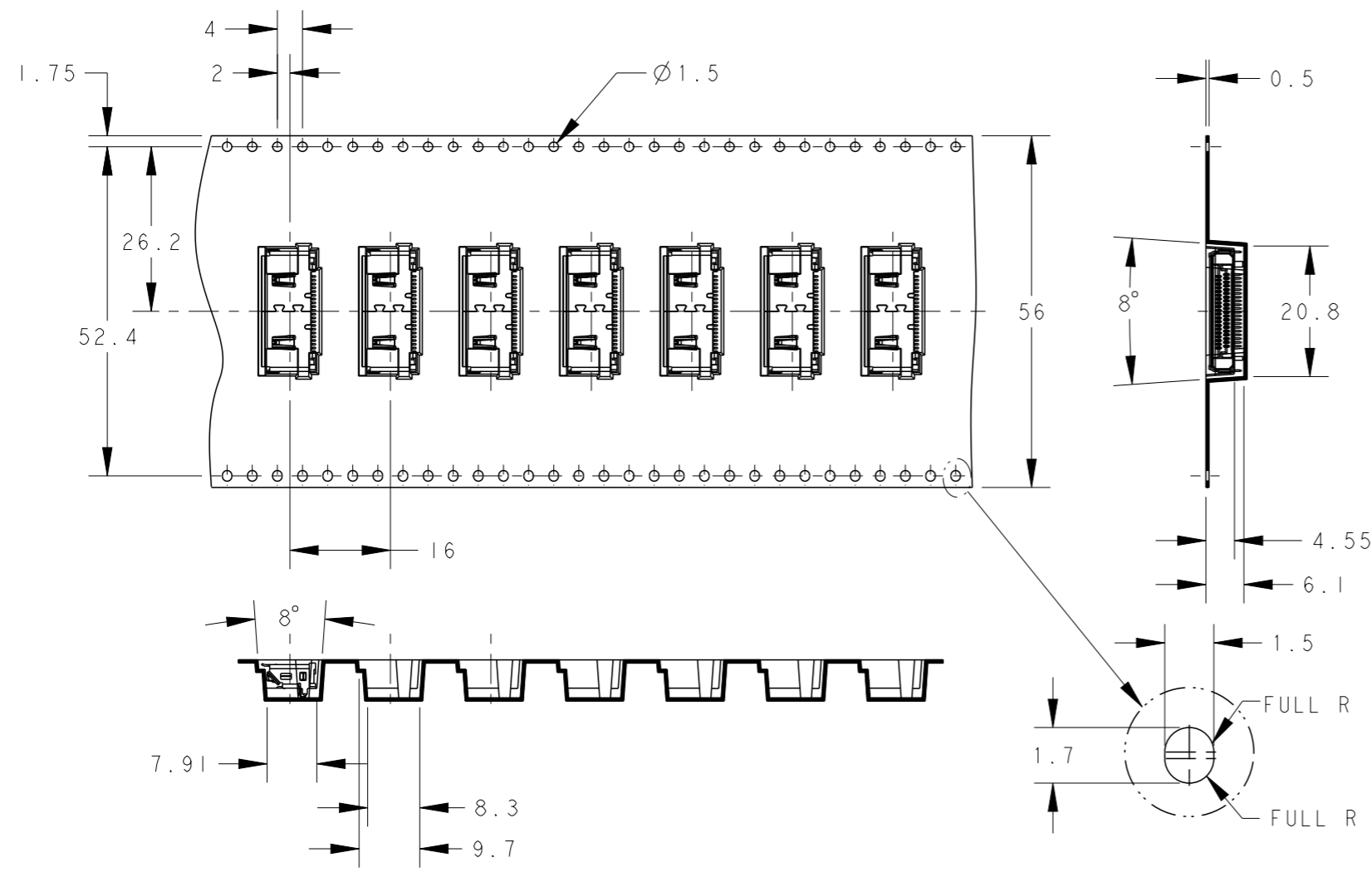
NAME: RECEPTACLE ASSY, 0.6mm PITCH CHAMP DOCKING CONNECTOR, 40POS

SIZE	CAGE CODE	DRAWING NO	RESTRICTED TO
A3	00779	C-2129364	-

CUSTOMER DRAWING SCALE: FREE SHEET 5 OF 6 REV A1

THIS DRAWING IS UNPUBLISHED. RELEASED FOR PUBLICATION 20  
 © COPYRIGHT 20 BY - ALL RIGHTS RESERVED.

LOC		DIST		REVISIONS				
P	LTR	DESCRIPTION	DATE	DWN	APVD			
		SEE SHEET 1	-	-	-			



2129364-2	600	3	1800
P/N	PCS/TAPE	REELS/CARTON	TOTAL QUANTITY

THIS DRAWING IS A CONTROLLED DOCUMENT.		DWN	-	 TE Connectivity	NAME RECEPTACLE ASSY, 0.6mm PITCH CHAMP DOCKING CONNECTOR, 40POS
DIMENSIONS: mm		CHK	-		
TOLERANCES UNLESS OTHERWISE SPECIFIED:		APVD	-		
0 PLC $\pm$ 1 PLC $\pm$ 2 PLC $\pm 0.5$ 3 PLC $\pm 3^\circ$ 4 PLC $\pm$ ANGLES $\pm$ FINISH -		PRODUCT SPEC	-		
MATERIAL	-	APPLICATION SPEC	-	SIZE	A3
		WEIGHT	-	CAGE CODE	00779
		CUSTOMER DRAWING	-	DRAWING NO	C-2129364
		SCALE	FREE	RESTRICTED TO	-
		SHEET	6 OF 6	REV	A1

Компания «Life Electronics» занимается поставками электронных компонентов импортного и отечественного производства от производителей и со складов крупных дистрибьюторов Европы, Америки и Азии.

С конца 2013 года компания активно расширяет линейку поставок компонентов по направлению коаксиальный кабель, кварцевые генераторы и конденсаторы (керамические, пленочные, электролитические), за счёт заключения дистрибьюторских договоров

Мы предлагаем:

- Конкурентоспособные цены и скидки постоянным клиентам.
- Специальные условия для постоянных клиентов.
- Подбор аналогов.
- Поставку компонентов в любых объемах, удовлетворяющих вашим потребностям.
- Приемлемые сроки поставки, возможна ускоренная поставка.
- Доставку товара в любую точку России и стран СНГ.
- Комплексную поставку.
- Работу по проектам и поставку образцов.
- Формирование склада под заказчика.
- Сертификаты соответствия на поставляемую продукцию (по желанию клиента).
- Тестирование поставляемой продукции.
- Поставку компонентов, требующих военную и космическую приемку.
- Входной контроль качества.
- Наличие сертификата ISO.

В составе нашей компании организован Конструкторский отдел, призванный помогать разработчикам, и инженерам.

Конструкторский отдел помогает осуществить:

- Регистрацию проекта у производителя компонентов.
- Техническую поддержку проекта.
- Защиту от снятия компонента с производства.
- Оценку стоимости проекта по компонентам.
- Изготовление тестовой платы монтаж и пусконаладочные работы.



Тел: +7 (812) 336 43 04 (многоканальный)

Email: [org@lifeelectronics.ru](mailto:org@lifeelectronics.ru)