



2SJ661

P-Channel Power MOSFET -60V, -38A, 39mΩ, TO-262-3L/TO-263-2L

ON Semiconductor®

<http://onsemi.com>

Features

- ON-resistance $R_{DS(on)1}=29.5m\Omega$ (typ.)
- Input capacitance $C_{iss}=4360pF$ (typ.)
- 4V drive

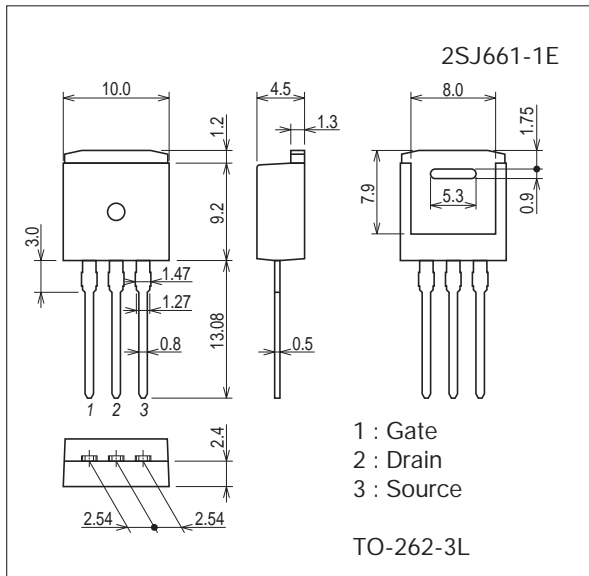
Specifications

Absolute Maximum Ratings at $T_a=25^\circ C$

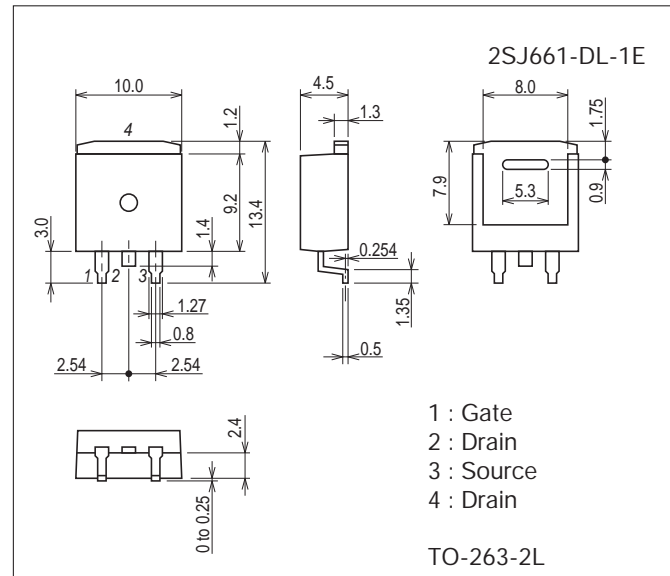
| Parameter | Symbol | Conditions | Ratings | Unit |
|-----------------------------|-----------|---|----------|------|
| Drain-to-Source Voltage | V_{DSS} | | -60 | V |
| Gate-to-Source Voltage | V_{GSS} | | ± 20 | V |
| Drain Current (DC) | I_D | | -38 | A |
| Drain Current (Pulse) | I_{DP} | $PW \leq 10\mu s$, duty cycle $\leq 1\%$ | -152 | A |
| Allowable Power Dissipation | P_D | | 1.65 | W |
| | | $T_c=25^\circ C$ | 65 | W |

Continued on next page.

Package Dimensions unit : mm (typ)
7537-001



Package Dimensions unit : mm (typ)
7535-001

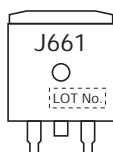


Product & Package Information

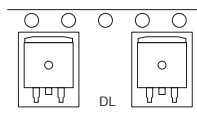
- Package : TO-262-3L
- JEITA, JEDEC : TO-262
- Minimum Packing Quantity : 50pcs./magazine

- Package : TO-263-2L
- JEITA, JEDEC : SC-83, TO-263
- Minimum Packing Quantity : 800pcs./reel

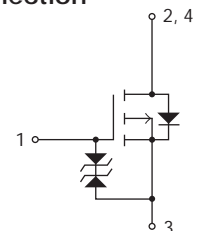
Marking



Packing Type : DL



Electrical Connection



2SJ661

Continued from preceding page.

| Parameter | Symbol | Conditions | Ratings | Unit |
|------------------------------------|-----------------|------------|-------------|------|
| Channel Temperature | Tch | | 150 | °C |
| Storage Temperature | Tstg | | -55 to +150 | °C |
| Avalanche Energy (Single Pulse) *1 | EAS | | 250 | mJ |
| Avalanche Current *2 | I _{AV} | | -38 | A |

Note : *1 V_{DD}=-30V, L=200μH, I_{AV}=-38A (Fig.1)

*2 L≤200μH, single pulse

Stresses exceeding Maximum Ratings may damage the device. Maximum Ratings are stress ratings only. Functional operation above the Recommended Operating Conditions is not implied. Extended exposure to stresses above the Recommended Operating Conditions may affect device reliability.

Electrical Characteristics at Ta=25°C

| Parameter | Symbol | Conditions | Ratings | | | Unit |
|--|----------------------|--|---|------|------|------|
| | | | min | typ | max | |
| Drain-to-Source Breakdown Voltage | V(BR)DSS | I _D =-1mA, V _{GS} =0V | -60 | | | V |
| Zero-Gate Voltage Drain Current | I _{DSS} | V _{DS} =-60V, V _{GS} =0V | | | -1 | μA |
| Gate-to-Source Leakage Current | I _{GSS} | V _{GS} =±16V, V _{DS} =0V | | | ±10 | μA |
| Cutoff Voltage | V _{GS(off)} | V _{DS} =-10V, I _D =-1mA | -1.2 | | -2.6 | V |
| Forward Transfer Admittance | y _{fs} | V _{DS} =-10V, I _D =-19A | 18 | 31 | | S |
| Static Drain-to-Source On-State Resistance | R _{DS(on)1} | I _D =-19A, V _{GS} =-10V | | 29.5 | 39 | mΩ |
| | R _{DS(on)2} | I _D =-19A, V _{GS} =-4V | | 40 | 56 | mΩ |
| Input Capacitance | C _{iss} | V _{DS} =-20V, f=1MHz | | 4360 | | pF |
| Output Capacitance | C _{oss} | | | 470 | | pF |
| Reverse Transfer Capacitance | C _{rss} | | | 335 | | pF |
| Turn-ON Delay Time | t _{d(on)} | | | 33 | | ns |
| Rise Time | t _r | See Fig.2 | | 285 | | ns |
| Turn-OFF Delay Time | t _{d(off)} | | | 295 | | ns |
| Fall Time | t _f | | | 195 | | ns |
| Total Gate Charge | Q _g | V _{DS} =-30V, V _{GS} =-10V, I _D =-38A | | 80 | | nC |
| Gate-to-Source Charge | Q _{gs} | | | 15 | | nC |
| Gate-to-Drain "Miller" Charge | Q _{gd} | | | 12 | | nC |
| Diode Forward Voltage | V _{SD} | | I _S =-38A, V _{GS} =0V | -1.0 | -1.2 | |

Fig.1 Avalanche Resistance Test Circuit

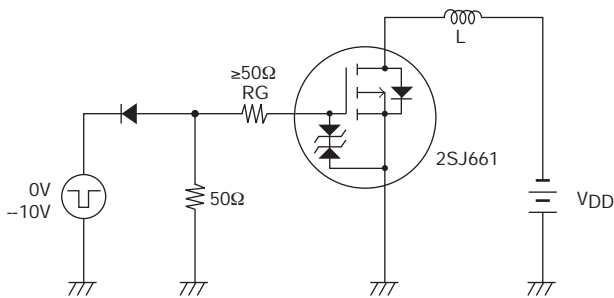
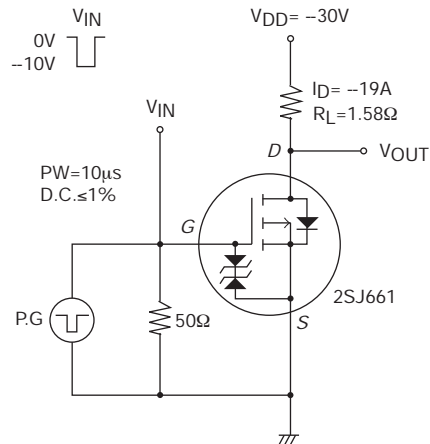
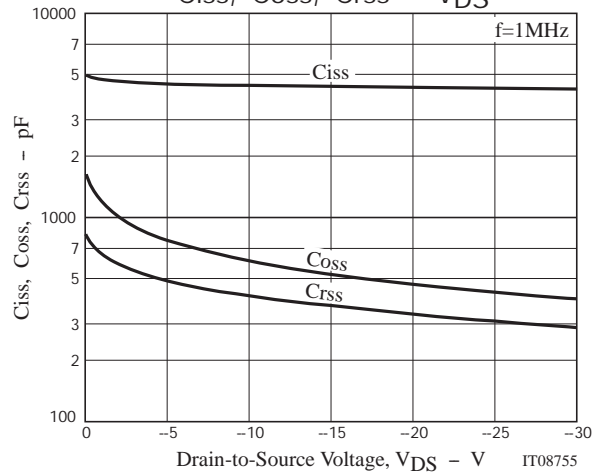
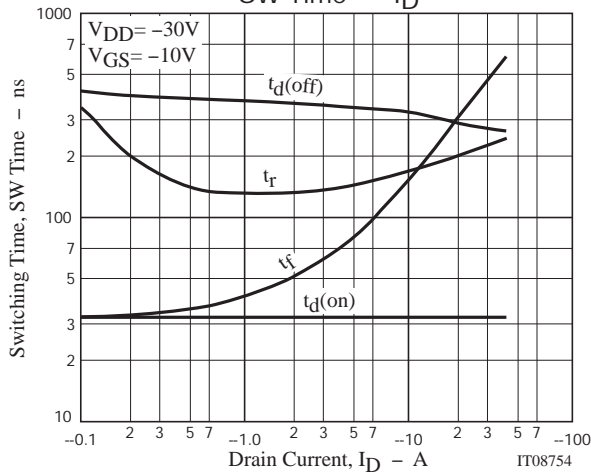
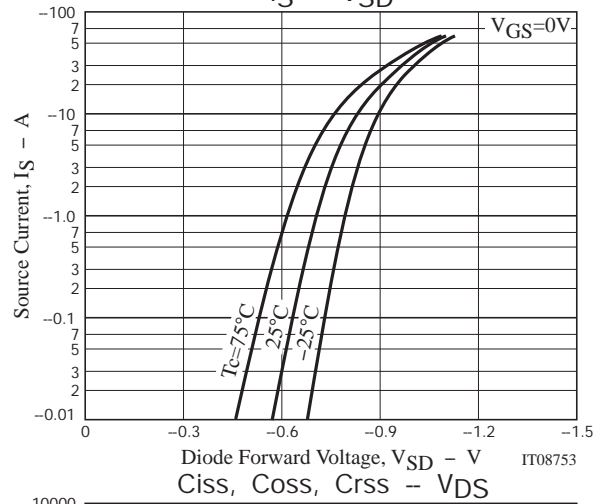
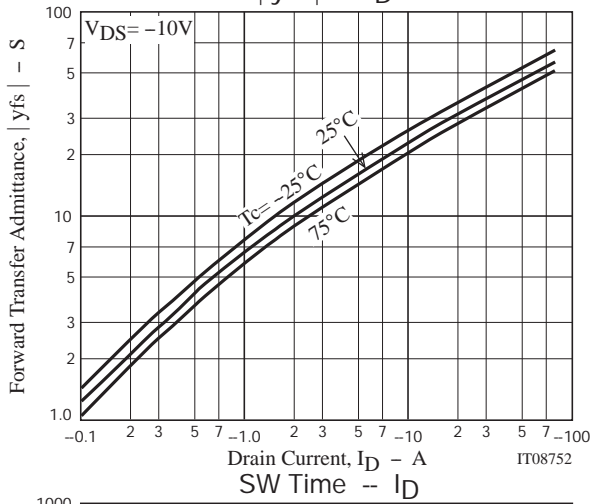
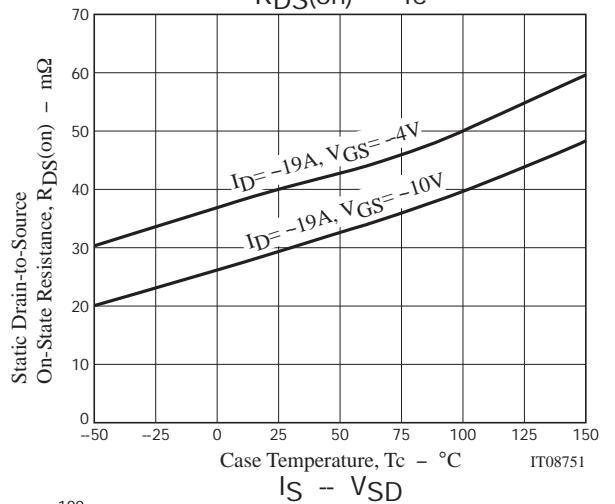
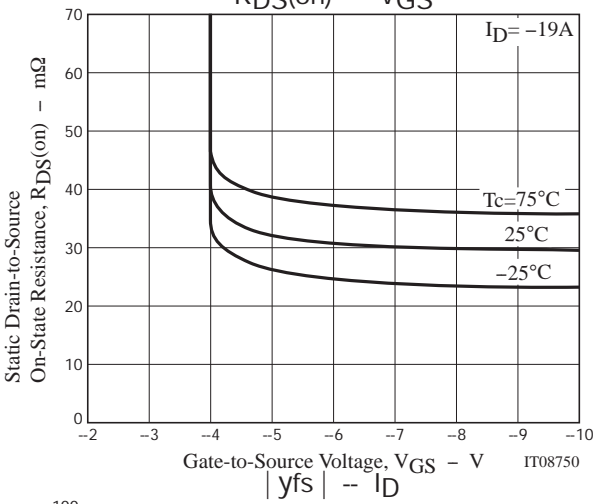
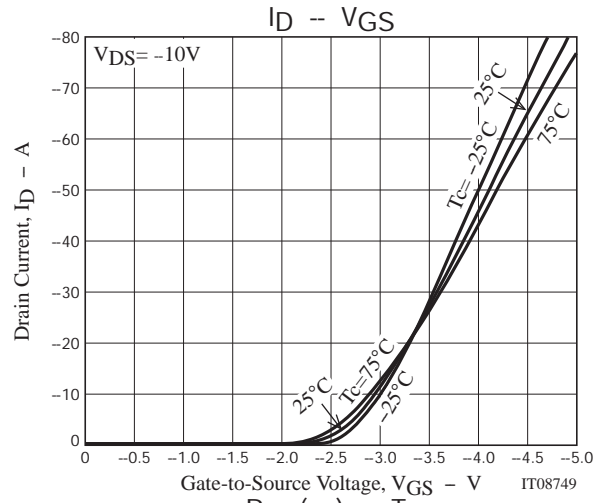
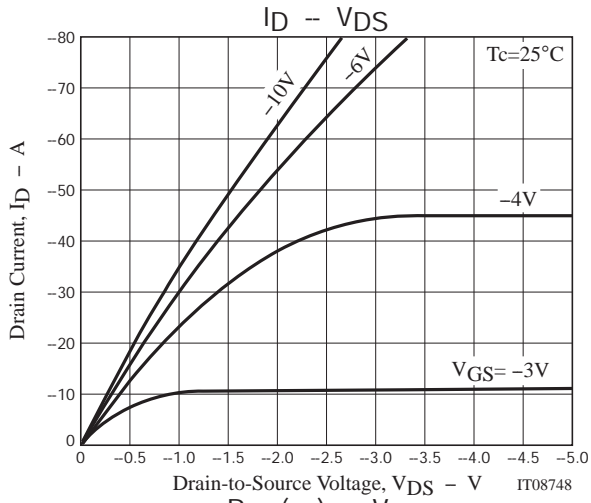


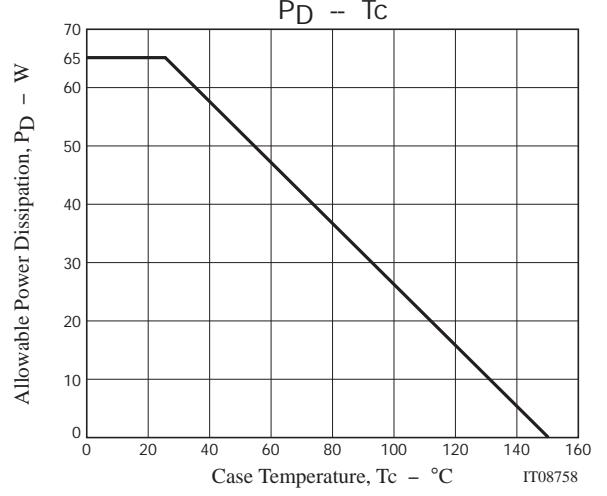
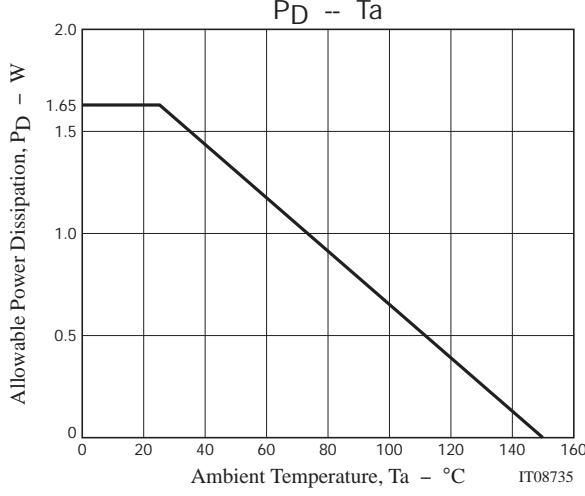
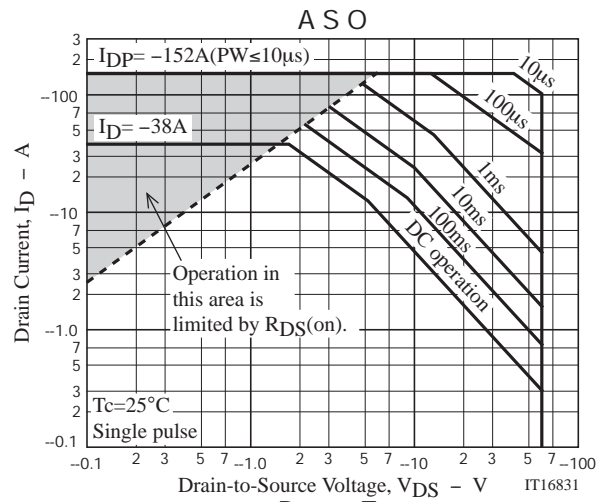
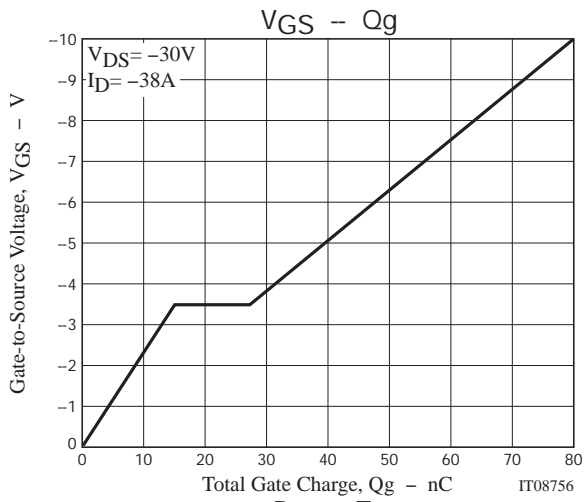
Fig.2 Switching Time Test Circuit



Ordering Information

| Device | Package | Shipping | memo |
|--------------|-----------|-----------------|---------|
| 2SJ661-1E | TO-262-3L | 50pcs./magazine | Pb Free |
| 2SJ661-DL-1E | TO-263-2L | 800pcs./reel | |





Taping Specification

2SJ661-DL-1E

1. Packing Format

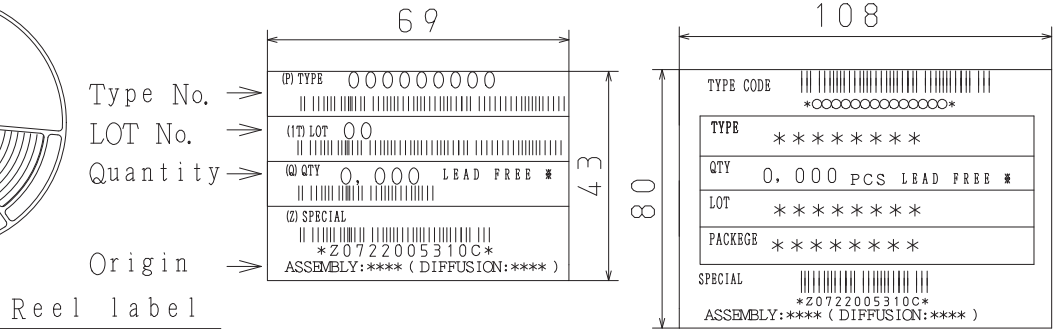
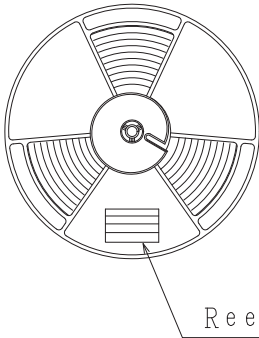
| Package Name | Maximum Number of devices contained (pcs) | | | Packing format | |
|--------------|---|-----------|-----------|--|--|
| | Reel | Inner box | Outer box | Inner BOX | Outer BOX |
| TO-263-2L | 800 | 1600 | 6400 | SPD-0V0011 2 reel contained Dimensions:mm (external) 351×340×68 | SPD-0V0009 4 inner boxes contained Dimensions:mm (external) 390×370×318 |

Reel label, Inner box label
(unit:mm)

Outer box label

Packing method

It is a label at the time of factory shipments.
The form of a label may change in physical distribution process.



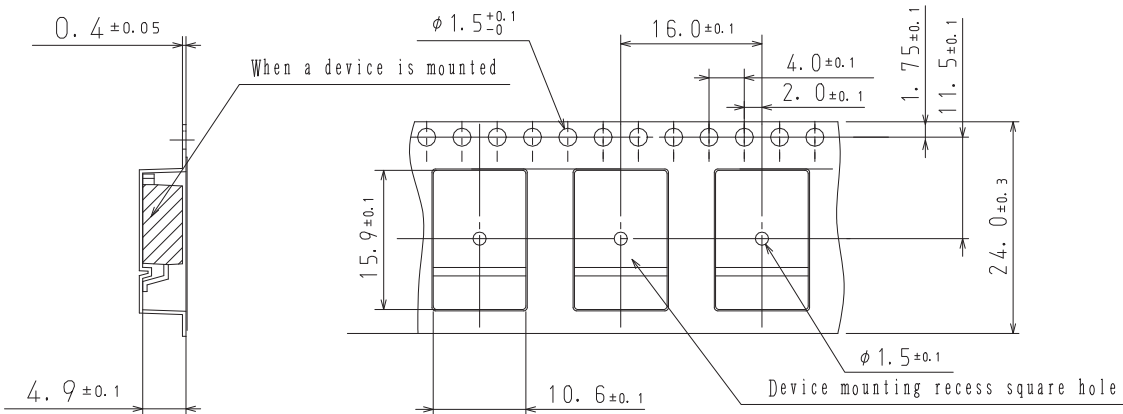
NOTE (1)

The LEAD FREE * description shows that the surface treatment of the terminal is lead free.

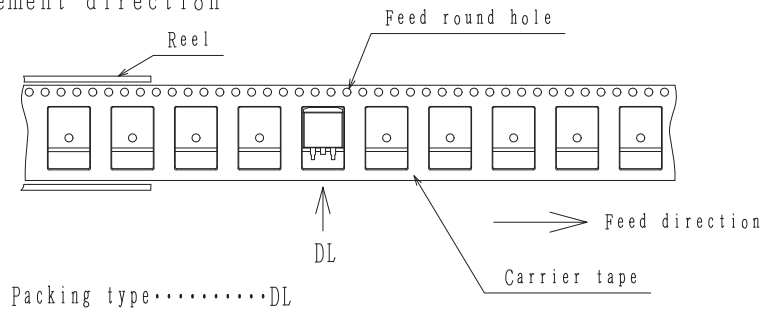
| Label | JEITA Phase |
|-------------|----------------|
| LEAD FREE 3 | JEITA Phase 3A |

2. Taping configuration

2-1. Carrier tape size (unit:mm)



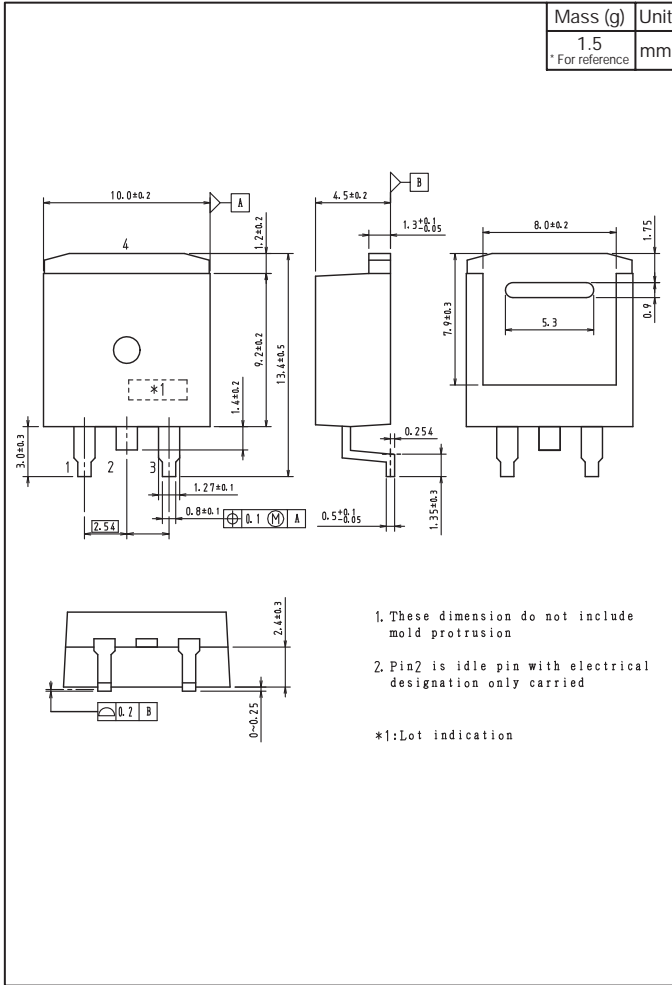
2-2. Device placement direction



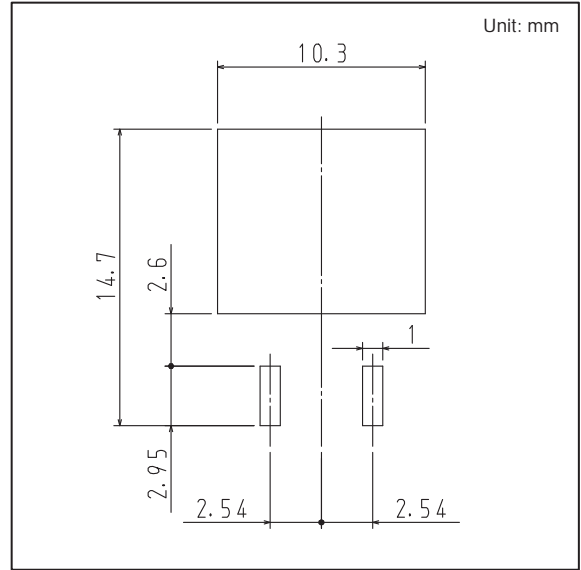
2SJ661

Outline Drawing

2SJ661-DL-1E



Land Pattern Example



Magazine Specification

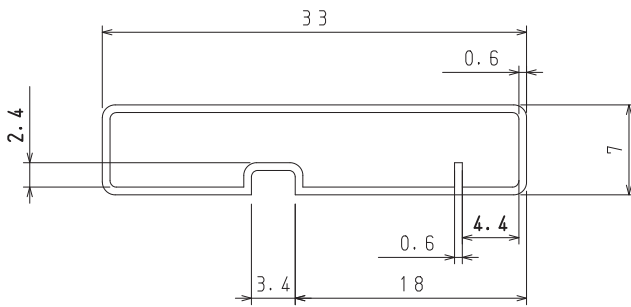
2SJ661-1E

1. Packing Format

| Package Name | Maximum Number of devices contained (pcs) | | | Packing format | |
|--------------|---|-----------|-----------|--|--|
| | Magazine | Inner box | Outer box | Inner BOX | Outer BOX |
| TO-262-3L | 50 | 1,000 | 4000 | SPD-0V0001 20 magazines contained Dimensions:mm (external) 568×150×55 | SPD-LV0010 4 inner boxes contained Dimensions:mm (external) 590×225×178 |

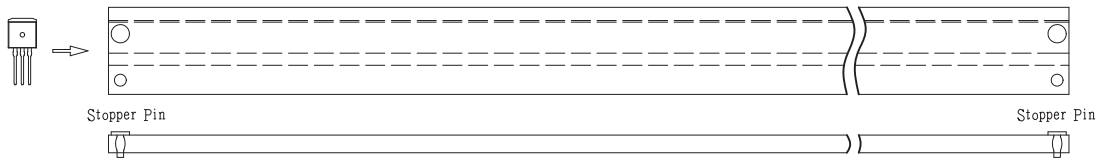
2. Magazine dimensions

(unit:mm)

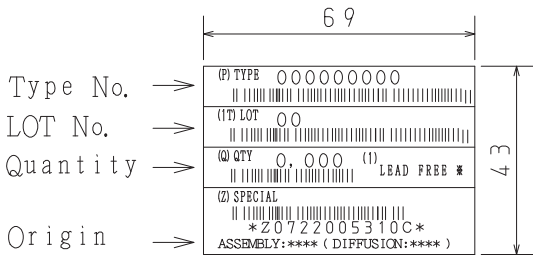


Tolerance=±0.2mm
 Thickness=0.6+0.2/-0mm
 Length =512.6±1mm
 Material =PVC (Antistatic treatment)

3. Storage method to magazine

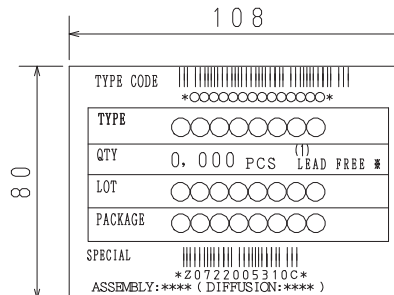


4. Inner box label (unit:mm)



5. Outer box label (unit:mm)

It is a label at the time of factory shipments.
 The form of a label may change in physical distribution process.



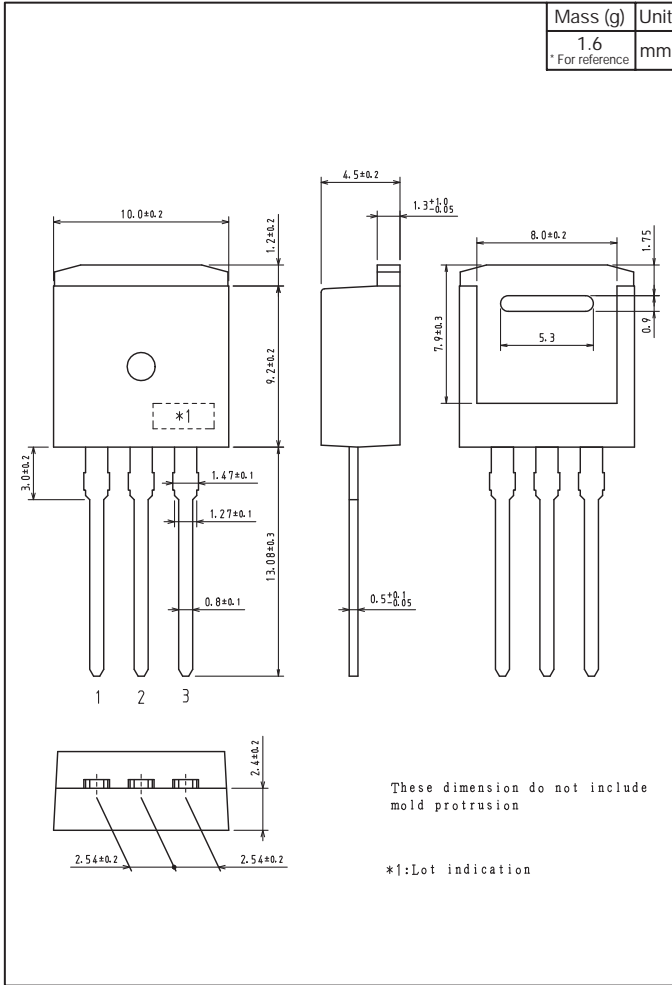
NOTE (1)

The LEAD FREE * description shows that the surface treatment of the terminal is lead free.

| | |
|-------------|----------------|
| Label | JEITA Phase |
| LEAD FREE 3 | JEITA Phase 3A |

Outline Drawing

2SJ661-1E



Note on usage : Since the 2SJ661 is a MOSFET product, please avoid using this device in the vicinity of highly charged objects.

ON Semiconductor and the ON logo are registered trademarks of Semiconductor Components Industries, LLC (SCILLC). SCILLC owns the rights to a number of patents, trademarks, copyrights, trade secrets, and other intellectual property. A listing of SCILLC's product/patent coverage may be accessed at www.onsemi.com/site/pdf/Patent-Marking.pdf. SCILLC reserves the right to make changes without further notice to any products herein. SCILLC makes no warranty, representation or guarantee regarding the suitability of its products for any particular purpose, nor does SCILLC assume any liability arising out of the application or use of any product or circuit, and specifically disclaims any and all liability, including without limitation special, consequential or incidental damages. "Typical" parameters which may be provided in SCILLC data sheets and/or specifications can and do vary in different applications and actual performance may vary over time. All operating parameters, including "Typicals" must be validated for each customer application by customer's technical experts. SCILLC does not convey any license under its patent rights nor the rights of others. SCILLC products are not designed, intended, or authorized for use as components in systems intended for surgical implant into the body, or other applications intended to support or sustain life, or for any other application in which the failure of the SCILLC product could create a situation where personal injury or death may occur. Should Buyer purchase or use SCILLC products for any such unintended or unauthorized application, Buyer shall indemnify and hold SCILLC and its officers, employees, subsidiaries, affiliates, and distributors harmless against all claims, costs, damages, and expenses, and reasonable attorney fees arising out of, directly or indirectly, any claim of personal injury or death associated with such unintended or unauthorized use, even if such claim alleges that SCILLC was negligent regarding the design or manufacture of the part. SCILLC is an Equal Opportunity/Affirmative Action Employer. This literature is subject to all applicable copyright laws and is not for resale in any manner.

Компания «Life Electronics» занимается поставками электронных компонентов импортного и отечественного производства от производителей и со складов крупных дистрибьюторов Европы, Америки и Азии.

С конца 2013 года компания активно расширяет линейку поставок компонентов по направлению коаксиальный кабель, кварцевые генераторы и конденсаторы (керамические, пленочные, электролитические), за счёт заключения дистрибьюторских договоров

Мы предлагаем:

- Конкурентоспособные цены и скидки постоянным клиентам.
- Специальные условия для постоянных клиентов.
- Подбор аналогов.
- Поставку компонентов в любых объемах, удовлетворяющих вашим потребностям.
- Приемлемые сроки поставки, возможна ускоренная поставка.
- Доставку товара в любую точку России и стран СНГ.
- Комплексную поставку.
- Работу по проектам и поставку образцов.
- Формирование склада под заказчика.
- Сертификаты соответствия на поставляемую продукцию (по желанию клиента).
- Тестирование поставляемой продукции.
- Поставку компонентов, требующих военную и космическую приемку.
- Входной контроль качества.
- Наличие сертификата ISO.

В составе нашей компании организован Конструкторский отдел, призванный помогать разработчикам, и инженерам.

Конструкторский отдел помогает осуществить:

- Регистрацию проекта у производителя компонентов.
- Техническую поддержку проекта.
- Защиту от снятия компонента с производства.
- Оценку стоимости проекта по компонентам.
- Изготовление тестовой платы монтаж и пусконаладочные работы.



Тел: +7 (812) 336 43 04 (многоканальный)

Email: org@lifeelectronics.ru