

GABRIELLA-MIDI-S

~10° spot beam with holder and installation tape

TECHNICAL SPECIFICATIONS:

Dimensions	Ø 37.8 mm
Height	24.1 mm
Fastening	tape, pin
ROHS compliant	yes ⓘ

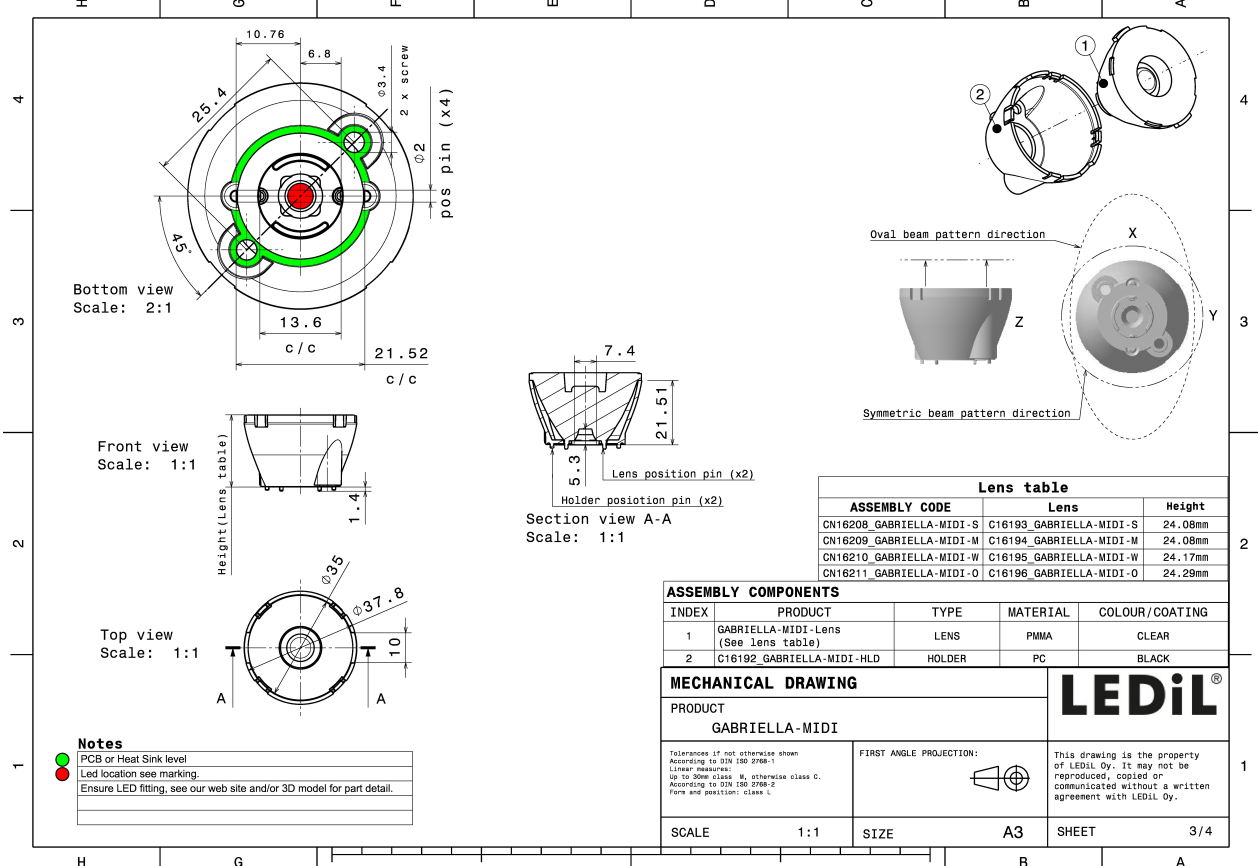
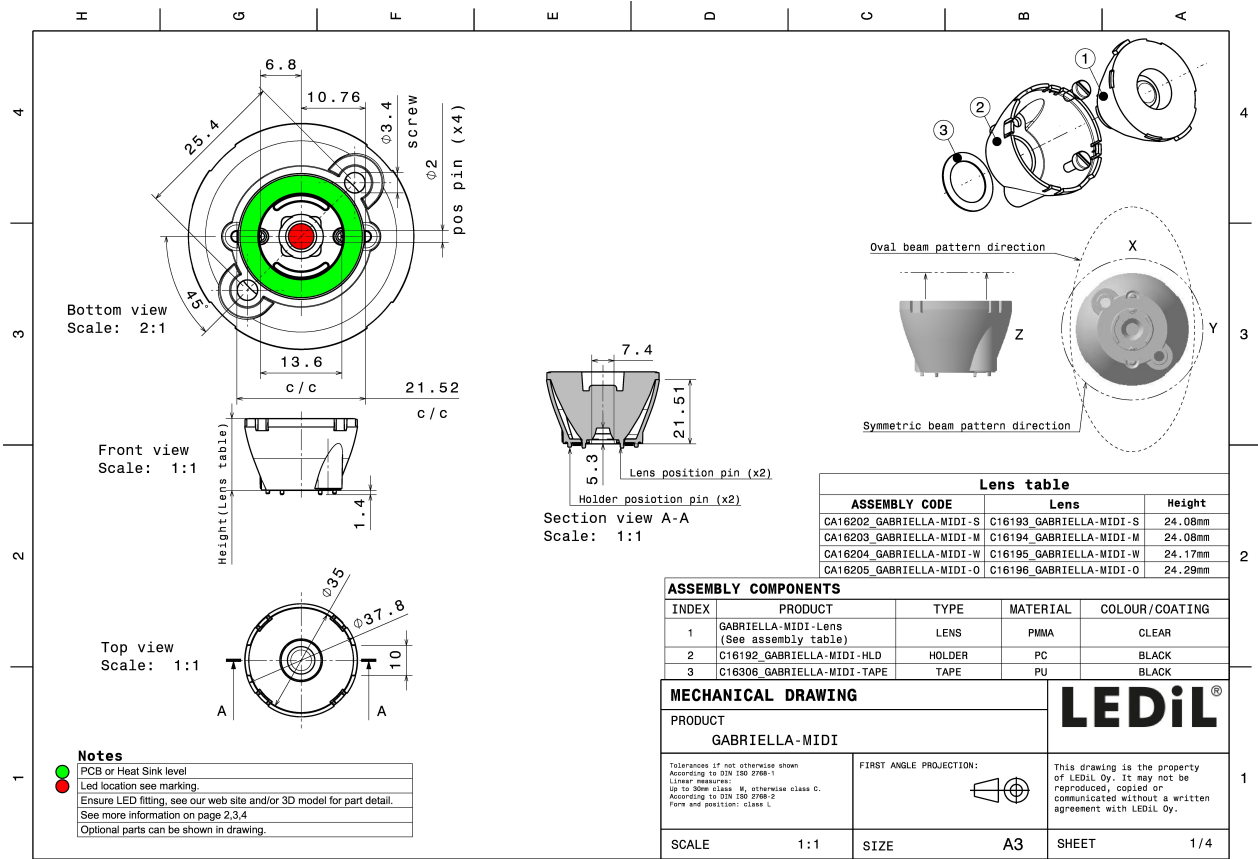
MATERIAL SPECIFICATIONS:

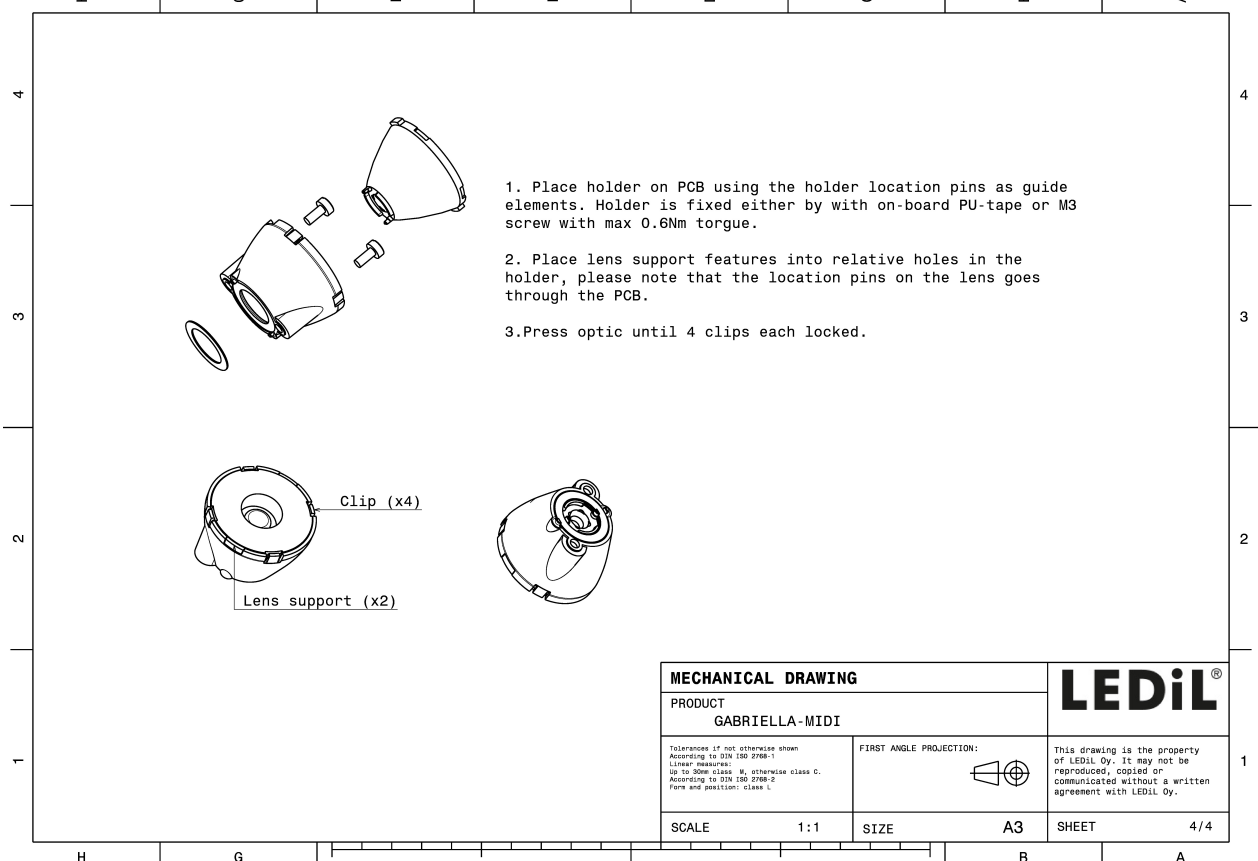
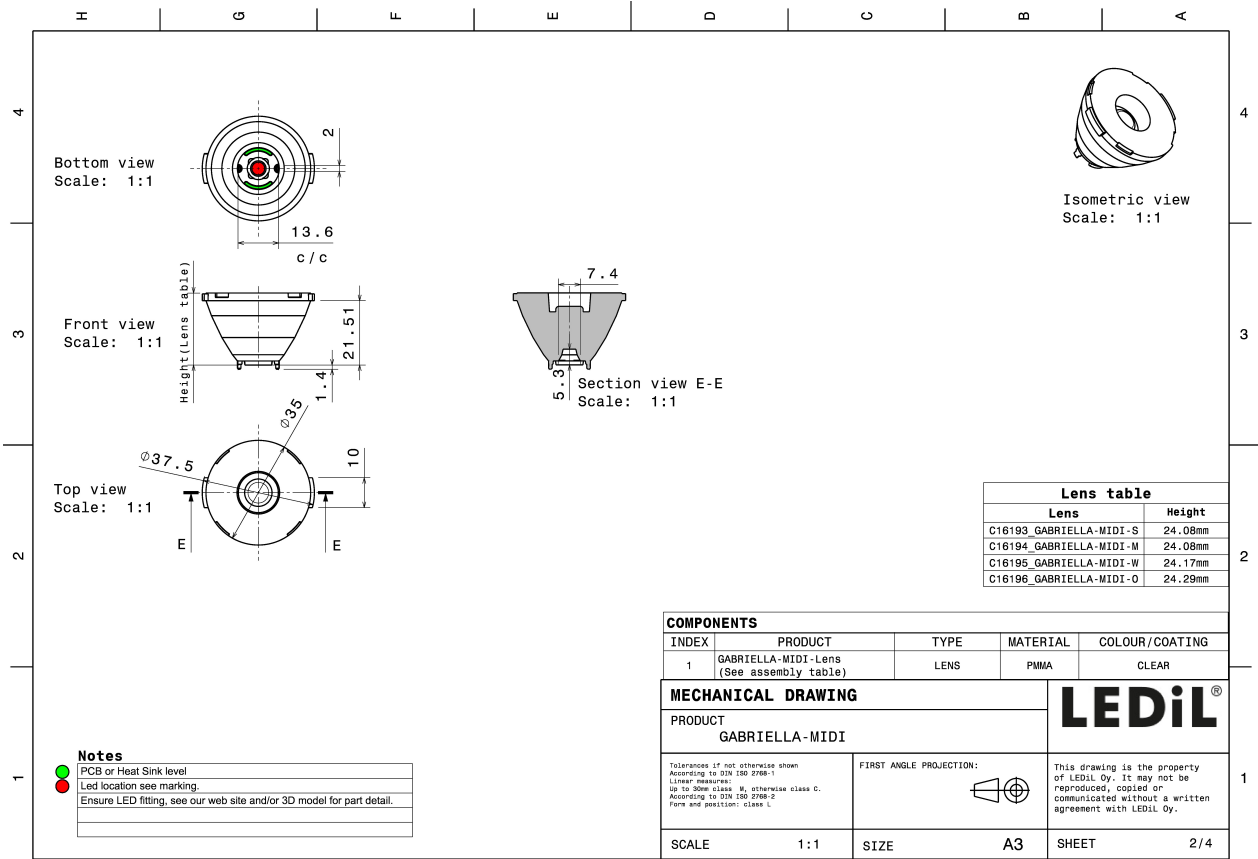
Component	Type	Material	Colour	Finish
GABRIELLA-MIDI-S	Single lens	PMMA	clear	
GABRIELLA-MIDI-HLD	Holder	PC	black	
GABRIELLA-MIDI-TAPE	Tape	PU tape	black	



ORDERING INFORMATION:

Component		Qty in box	MOQ	MPQ	Box weight (kg)
CA16202_GABRIELLA-MIDI-S	Single lens	500	100	50	11.7
» Box size: 476 x 273 x 292 mm					

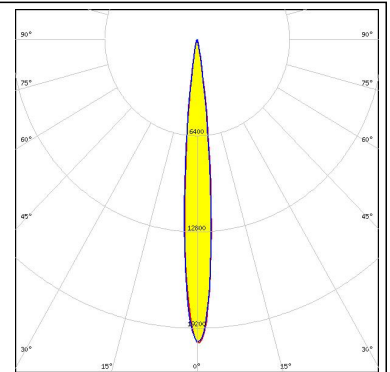
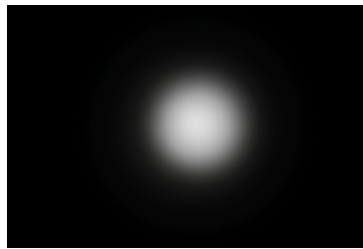




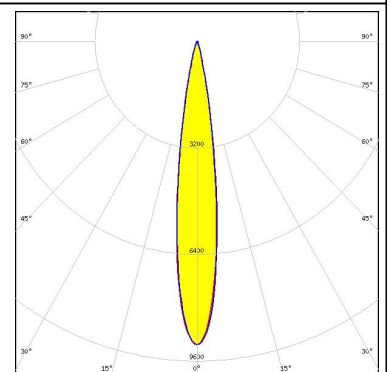
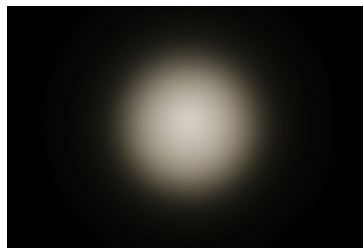
PHOTOMETRIC DATA (MEASURED):



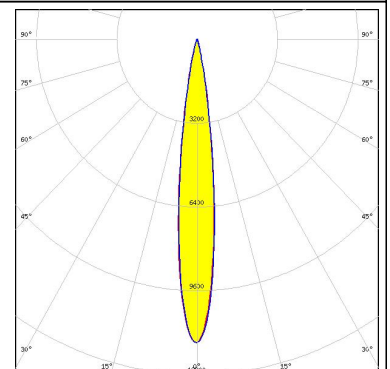
LED XHP35 HI
 FWHM 10.0°
 Efficiency 90 %
 Peak intensity 20.4 cd/lm
 LEDs/each optic 1
 Light colour White
 Required components:



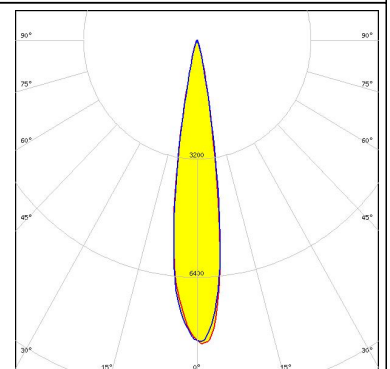
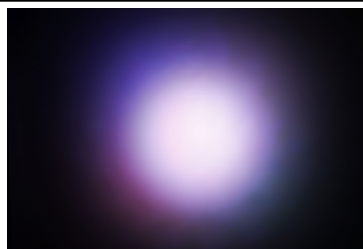
LED XHP50.2
 FWHM 15.0°
 Efficiency 87 %
 Peak intensity 9.1 cd/lm
 LEDs/each optic 1
 Light colour White
 Required components:



LED LUXEON 5050 Round LES
 FWHM 14.0°
 Efficiency 91 %
 Peak intensity 12.6 cd/lm
 LEDs/each optic 1
 Light colour White
 Required components:



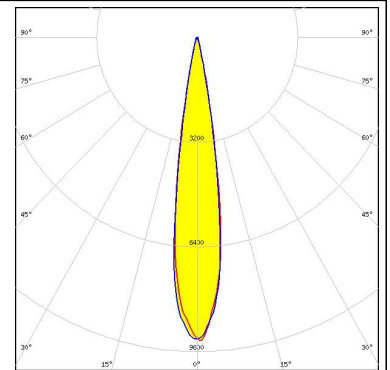
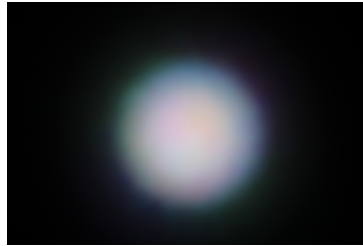
LED LUXEON C
 FWHM 17.0°
 Efficiency 85 %
 Peak intensity 8.2 cd/lm
 LEDs/each optic 1
 Light colour RGBW
 Required components:



PHOTOMETRIC DATA (MEASURED):

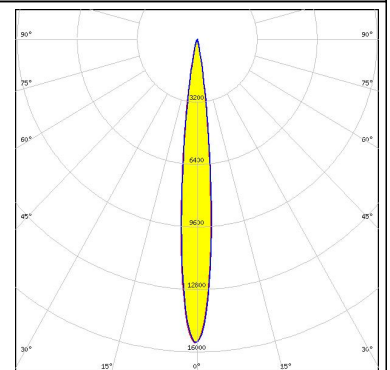
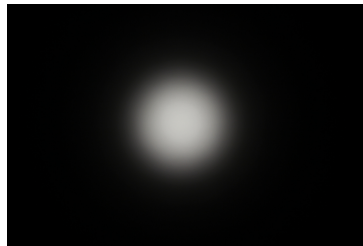
LUMILEDS

LED LUXEON CZ
 FWHM 16.0°
 Efficiency 89 %
 Peak intensity 9.3 cd/lm
 LEDs/each optic 4
 Light colour RGBW
 Required components:



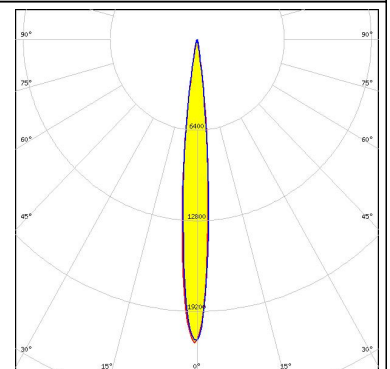
LUMILEDS

LED LUXEON V
 FWHM 11.0°
 Efficiency 89 %
 Peak intensity 15.5 cd/lm
 LEDs/each optic 1
 Light colour White
 Required components:



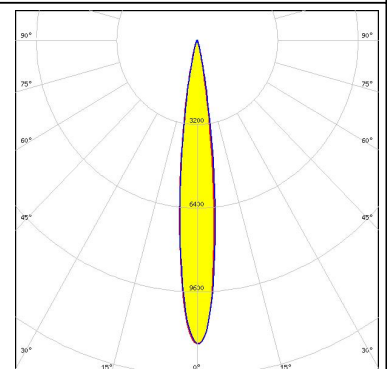
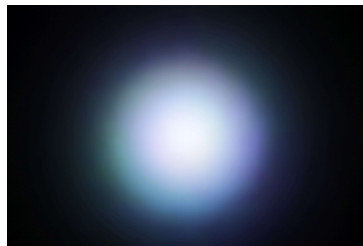
LUMINUS

LED SBM-40-RGBW
 FWHM 10.0°
 Efficiency 89 %
 Peak intensity 21.5 cd/lm
 LEDs/each optic 1
 Light colour White
 Required components:

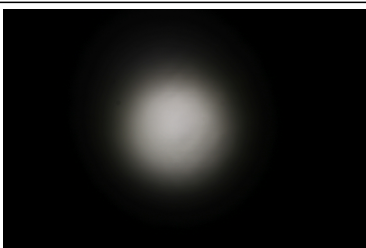
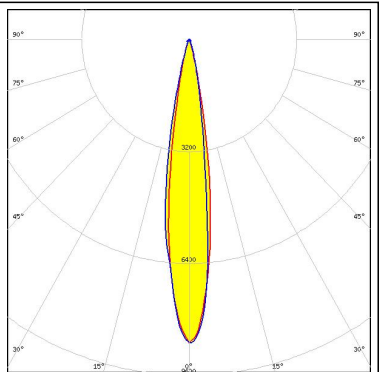

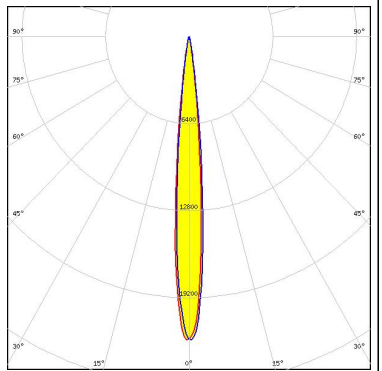
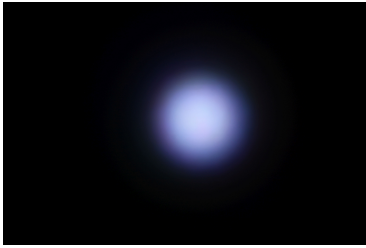
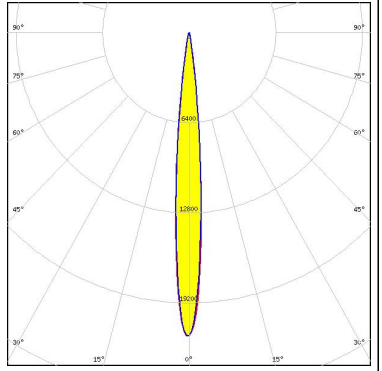

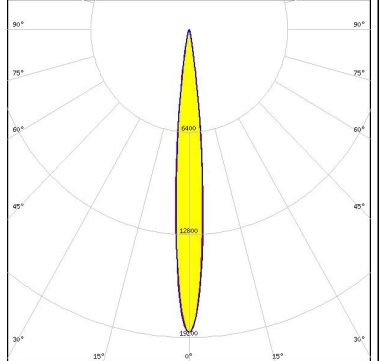


NICHIA

LED NCSxE17A
 FWHM 13.0°
 Efficiency 92 %
 Peak intensity 11.6 cd/lm
 LEDs/each optic 4
 Light colour RGBW
 Required components:



PHOTOMETRIC DATA (MEASURED):

<p>NICHIA</p> <p>LED NVSW219F FWHM 16.0° Efficiency 89 % Peak intensity 8.7 cd/lm LEDs/each optic 1 Light colour White Required components:</p>		
<p>OSRAM <small>Opto Semiconductors</small></p> <p>LED OSTAR Stage (S2WP) FWHM 10.0° Efficiency 91 % Peak intensity 22 cd/lm LEDs/each optic 1 Light colour White Required components:</p>		
<p>SEOL <small>SEOUL SEMICONDUCTOR</small></p> <p>LED SPF05F0A FWHM 10.0° Efficiency 89 % Peak intensity 21.6 cd/lm LEDs/each optic 1 Light colour RGBW Required components:</p>		
<p>SEOL <small>SEOUL SEMICONDUCTOR</small></p> <p>LED SPF05F0B FWHM 11.0° Efficiency 90 % Peak intensity 18.9 cd/lm LEDs/each optic 1 Light colour RGBW Required components:</p>		

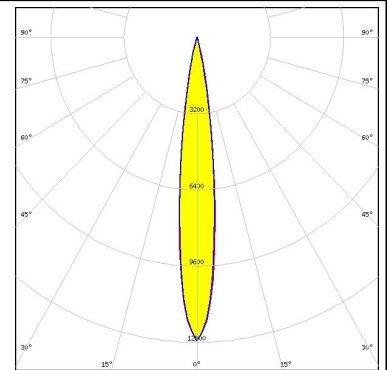
PHOTOMETRIC DATA (MEASURED):



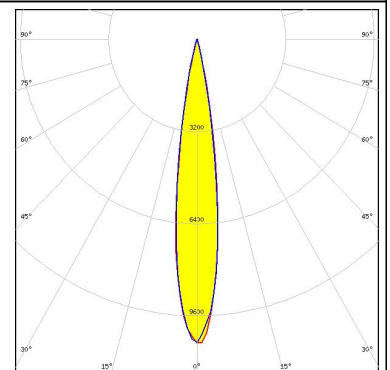
PHOTOMETRIC DATA (SIMULATED):



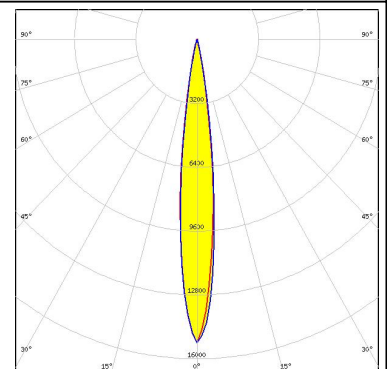
LED CLQ6A-TKW
 FWHM 13.7°
 Efficiency 94 %
 Peak intensity 12.7 cd/lm
 LEDs/each optic 1
 Light colour RGBW
 Required components:



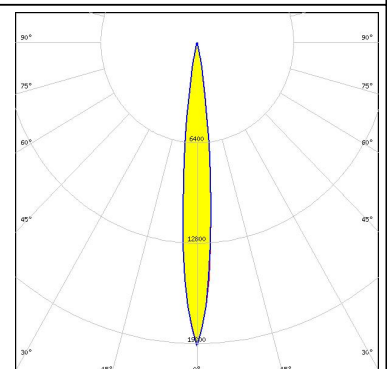
LED XHP50
 FWHM 16.0°
 Efficiency 91 %
 Peak intensity 10.7 cd/lm
 LEDs/each optic 1
 Light colour White
 Required components:



LED XM-L RGB
 FWHM 13.0°
 Efficiency 93 %
 Peak intensity 15.2 cd/lm
 LEDs/each optic 1
 Light colour White
 Required components:



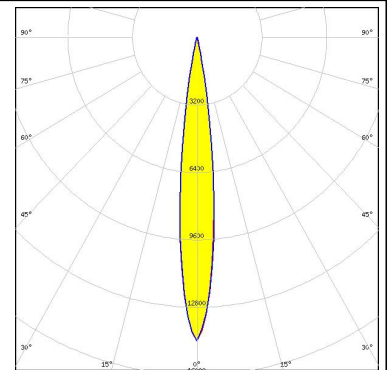
LED XP-G2 HE
 FWHM 11.0°
 Efficiency 92 %
 Peak intensity 19.4 cd/lm
 LEDs/each optic 1
 Light colour White
 Required components:



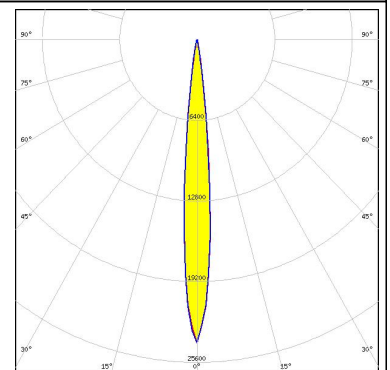
PHOTOMETRIC DATA (SIMULATED):



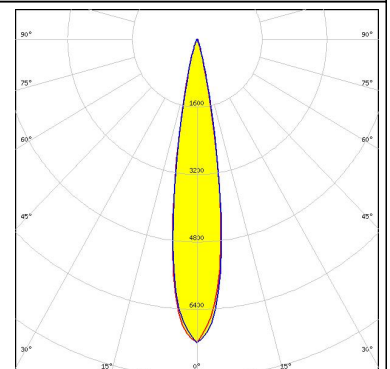
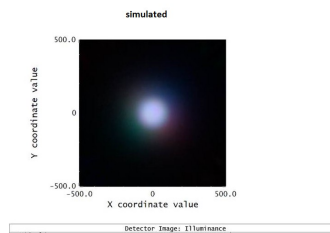
LED XQ-E HI
FWHM 14.0°
Efficiency 90 %
Peak intensity 14.4 cd/lm
LEDs/each optic 4
Light colour RGBW
Required components:



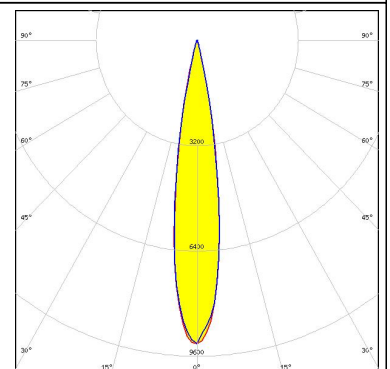
LED XT-E
FWHM 10.0°
Efficiency 91 %
Peak intensity 24.1 cd/lm
LEDs/each optic 1
Light colour White
Required components:



LED LUXEON C
FWHM 18.0 + °
Efficiency 86 %
Peak intensity 7.2 cd/lm
LEDs/each optic 4
Light colour RGBW
Required components:



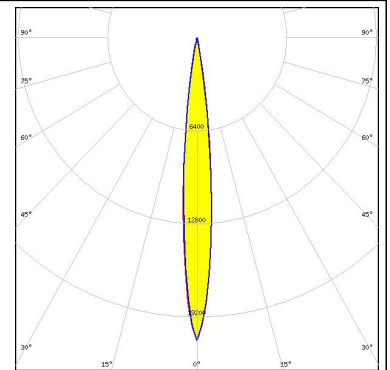
LED LUXEON M/MX
FWHM 17.0°
Efficiency 91 %
Peak intensity 9.3 cd/lm
LEDs/each optic 1
Light colour White
Required components:



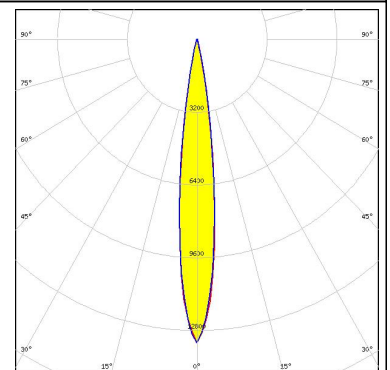
PHOTOMETRIC DATA (SIMULATED):



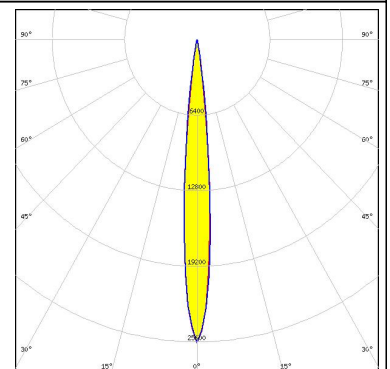
LED LUXEON Z
FWHM 11.0°
Efficiency 91 %
Peak intensity 21 cd/lm
LEDs/each optic 4
Light colour RGBW
Required components:



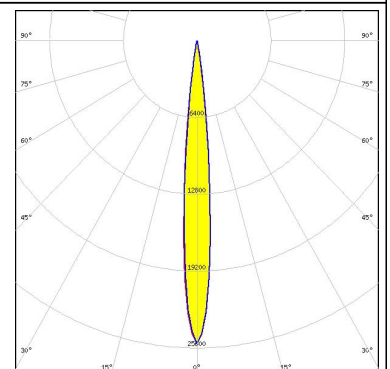
LED Duris S8
FWHM 14.0°
Efficiency 92 %
Peak intensity 13.5 cd/lm
LEDs/each optic 1
Light colour White
Required components:



LED OSCONIQ P 3737 (2W version)
FWHM 10.0°
Efficiency 94 %
Peak intensity 25.7 cd/lm
LEDs/each optic 1
Light colour White
Required components:



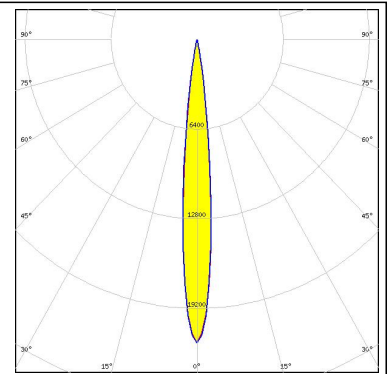
LED OSLOM Square CSSRM2/CSSRM3
FWHM 10.0°
Efficiency 93 %
Peak intensity 25.3 cd/lm
LEDs/each optic 1
Light colour White
Required components:



PHOTOMETRIC DATA (SIMULATED):

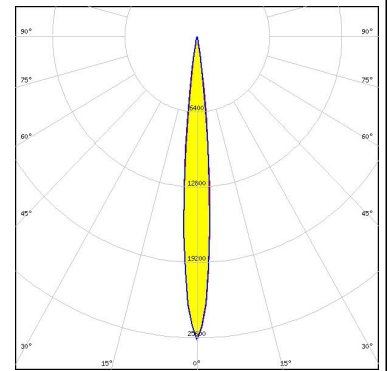
SAMSUNG

LED LH351B
FWHM 11.0°
Efficiency 93 %
Peak intensity 21.7 cd/lm
LEDs/each optic 1
Light colour White
Required components:



SEOUL SEMICONDUCTOR

LED Z5M1/Z5M2
FWHM 10.0°
Efficiency 93 %
Peak intensity 25.8 cd/lm
LEDs/each optic 1
Light colour White
Required components:



GENERAL INFORMATION:

NOTE: The typical beam angle will be changed by different color, chip size and chip position tolerance. The typical total beam angle is the full angle measured where the luminous intensity is half of the peak value.

MATERIALS:

As part of our continuous research and improvement processes, and to ensure the best possible quality and availability of our products, LEDiL reserves the right to change material grades without notice.

PRODUCT DATA USER AGREEMENT AND DISCLAIMER:

The measured data in the provided downloadable LEDiL Product Datasheets and Mechanical 2D-Drawings is rounded and provided as reference for planning. LEDiL Oy's optical specifications have been verified by conducting performance testing of the products in accordance with the company's quality system. The reported data are averaged results of multiple measurements with typical variation. LEDiL Oy reserves the right to without prior notification make changes and improvements to its products.

LEDiL Oy assumes neither warranty, nor guarantee nor any other liability of any kind for the contents and correctness of the provided data. The provided data has been generated with highest diligence but the provided data may in reality not represent the complete possible variation range of all intrinsic parameters. Therefore, in certain cases a deviation from the provided data could occur.

LEDiL Oy reserves the right to undertake technical changes of its products without further notification which could lead to changes in the provided data. LEDiL Oy assumes no liability of any kind for the possible deviation from any provided data or any other damage resulting from the usage of the provided data.

The user agrees to this disclaimer and user agreement with the download or usage of the provided files.

LEDiL Oy

Joensuunkatu 13
FI-24240 SALO
Finland

LEDiL Inc.

228 West Page Street
Suite D
Sycamore IL 60178
USA

Local sales and technical support

[www.ledil.com/
where_to_buy](http://www.ledil.com/where_to_buy)

Shipping locations

Salo, Finland
Hong Kong, China

Distribution Partners

[www.ledil.com/
where_to_buy](http://www.ledil.com/where_to_buy)

Компания «Life Electronics» занимается поставками электронных компонентов импортного и отечественного производства от производителей и со складов крупных дистрибьюторов Европы, Америки и Азии.

С конца 2013 года компания активно расширяет линейку поставок компонентов по направлению коаксиальный кабель, кварцевые генераторы и конденсаторы (керамические, пленочные, электролитические), за счёт заключения дистрибьюторских договоров

Мы предлагаем:

- Конкурентоспособные цены и скидки постоянным клиентам.
- Специальные условия для постоянных клиентов.
- Подбор аналогов.
- Поставку компонентов в любых объемах, удовлетворяющих вашим потребностям.
- Приемлемые сроки поставки, возможна ускоренная поставка.
- Доставку товара в любую точку России и стран СНГ.
- Комплексную поставку.
- Работу по проектам и поставку образцов.
- Формирование склада под заказчика.
- Сертификаты соответствия на поставляемую продукцию (по желанию клиента).
- Тестирование поставляемой продукции.
- Поставку компонентов, требующих военную и космическую приемку.
- Входной контроль качества.
- Наличие сертификата ISO.

В составе нашей компании организован Конструкторский отдел, призванный помогать разработчикам, и инженерам.

Конструкторский отдел помогает осуществить:

- Регистрацию проекта у производителя компонентов.
- Техническую поддержку проекта.
- Защиту от снятия компонента с производства.
- Оценку стоимости проекта по компонентам.
- Изготовление тестовой платы монтаж и пусконаладочные работы.



Тел: +7 (812) 336 43 04 (многоканальный)
Email: org@lifeelectronics.ru