

## FEATURES

### High performance

- High relative accuracy (INL):  $\pm 3$  LSB maximum at 16 bits
- Total unadjusted error (TUE):  $\pm 0.14\%$  of FSR maximum
- Offset error:  $\pm 1.5$  mV maximum
- Gain error:  $\pm 0.06\%$  of FSR maximum
- Low drift 2.5 V reference: 2 ppm/°C typical

### Wide operating ranges

- $-40^{\circ}\text{C}$  to  $+125^{\circ}\text{C}$  temperature range
- 2.7 V to 5.5 V power supply range

### Easy implementation

- User selectable gain of 1 or 2 (GAIN pin/gain bit)
- 1.8 V logic compatibility
- 50 MHz SPI with readback or daisy chain
- 20-lead, RoHS-compliant TSSOP and LFCSP

## APPLICATIONS

- Optical transceivers
- Base station power amplifiers
- Process control (PLC input/output cards)
- Industrial automation
- Data acquisition systems

## GENERAL DESCRIPTION

The AD5672R/AD5676R are low power, octal, 12-/16-bit buffered voltage output digital-to-analog converters (DACs). They include a 2.5 V, 2 ppm/°C internal reference (enabled by default) and a gain select pin giving a full-scale output of 2.5 V (gain = 1) or 5 V (gain = 2). The devices operate from a single 2.7 V to 5.5 V supply and are guaranteed monotonic by design. The AD5672R/AD5676R are available in a 20-lead TSSOP and in a 20-lead LFCSP and incorporate a power-on reset circuit and a RSTSEL pin that ensures that the DAC outputs power up to zero scale or midscale and remains there until a valid write. The AD5672R/AD5676R contain a power-down mode, reducing the current consumption to 1  $\mu\text{A}$  typical while in power-down mode.

Table 1. Octal *nano*DAC+® Devices

| Interface | Reference | 16-Bit  | 12-Bit         |
|-----------|-----------|---------|----------------|
| SPI       | Internal  | AD5676R | AD5672R        |
|           | External  | AD5676E | Not applicable |
| µC        | Internal  | AD5675R | AD5671R        |

## PRODUCT HIGHLIGHTS

1. High Relative Accuracy (INL).  
AD5672R (12-bit):  $\pm 1$  LSB maximum.  
AD5676R (16-bit):  $\pm 3$  LSB maximum.
2. Low Drift, 2.5 V On-Chip Reference.

## FUNCTIONAL BLOCK DIAGRAM

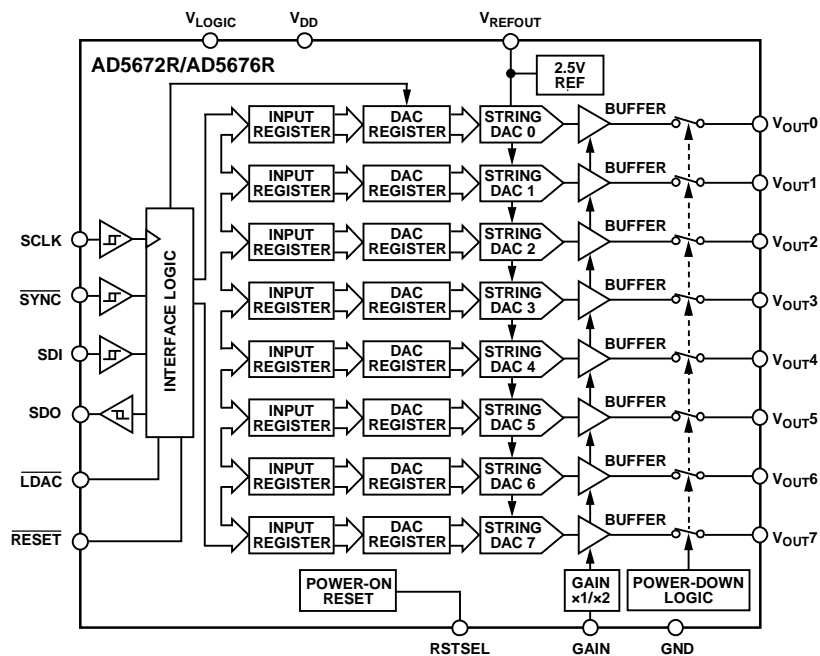


Figure 1.

Rev. D

[Document Feedback](#)

Information furnished by Analog Devices is believed to be accurate and reliable. However, no responsibility is assumed by Analog Devices for its use, nor for any infringements of patents or other rights of third parties that may result from its use. Specifications subject to change without notice. No license is granted by implication or otherwise under any patent or patent rights of Analog Devices. Trademarks and registered trademarks are the property of their respective owners.

## TABLE OF CONTENTS

|  |    |   |    |
|--|----|---|----|
| Features .....                                       | 1  | Write and Update Commands.....                        | 27 |
| Applications.....                                    | 1  | Daisy-Chain Operation .....                           | 27 |
| General Description .....                            | 1  | Readback Operation .....                              | 28 |
| Product Highlights .....                             | 1  | Power-Down Operation .....                            | 28 |
| Functional Block Diagram .....                       | 1  | Load DAC (Hardware $\overline{\text{LDAC}}$ Pin)..... | 29 |
| Revision History .....                               | 3  | $\overline{\text{LDAC}}$ Mask Register .....          | 29 |
| Specifications.....                                  | 4  | Hardware Reset ( $\overline{\text{RESET}}$ ) .....    | 30 |
| AD5672R Specifications .....                         | 4  | Reset Select Pin (RSTSEL) .....                       | 30 |
| AD5676R Specifications .....                         | 6  | Software Reset.....                                   | 30 |
| AC Characteristics.....                              | 8  | Amplifier Gain Selection on LFCSP .....               | 30 |
| Timing Characteristics .....                         | 9  | Internal Reference Setup .....                        | 30 |
| Daisy-Chain and Readback Timing Characteristics..... | 10 | Solder Heat Reflow.....                               | 30 |
| Absolute Maximum Ratings.....                        | 12 | Long-Term Temperature Drift .....                     | 30 |
| Thermal Resistance .....                             | 12 | Thermal Hysteresis .....                              | 31 |
| ESD Caution.....                                     | 12 | Applications Information .....                        | 32 |
| Pin Configurations and Function Descriptions .....   | 13 | Power Supply Recommendations.....                     | 32 |
| Typical Performance Characteristics .....            | 14 | Microprocessor Interfacing.....                       | 32 |
| Terminology .....                                    | 23 | AD5672R/AD5676R to ADSP-BF531 Interface.....          | 32 |
| Theory of Operation .....                            | 25 | AD5672R/AD5676R to SPORT Interface .....              | 32 |
| Digital-to-Analog Converter .....                    | 25 | Layout Guidelines.....                                | 32 |
| Transfer Function .....                              | 25 | Galvanically Isolated Interface .....                 | 33 |
| DAC Architecture.....                                | 25 | Outline Dimensions .....                              | 34 |
| Serial Interface .....                               | 26 | Ordering Guide .....                                  | 35 |
| Standalone Operation .....                           | 27 |   |    |

**REVISION HISTORY****5/2018—Rev. C to Rev. D**

Change to SYNC to SCLK Falling Edge Parameter, Table 6.....10

**4/2018—Rev. B to Rev. C**

Changes to Features Section .....1

Change to AD56572R Specifications Section.....4

Changed  $V_{\text{LOGIC}}$  Parameter, Table 2.....5

Deleted Endnote 2, Table 2; Renumbered Sequentially .....5

Change to AD5676R Specifications Section.....6

Changed  $V_{\text{LOGIC}}$  Parameter, Table 3.....7

Deleted Endnote 2, Table 3; Renumbered Sequentially .....7

Changes to AC Specifications Section.....8

Changes to Timing Characteristics Section, Table 5, and Figure 2 .....9

Changes to Daisy-Chain and Readback Timing Characteristics Section, Table 5, Figure 3, and Figure 4.....10

Added Figure 5; Renumbered Sequentially .....11

Deleted ESD Ratings Parameter, Table 7.....12

Changes to Thermal Resistance Section .....12

Changes to Table 9 .....13

Changes to Table 10 .....26

Deleted Endnote 1, Table 11 .....26

Changes to Update DAC Register with Contents of Input Register n Section and Write to and Update DAC Channel n (Independent of LDAC) Section .....27

Changes to Readback Operation Section and Power-Down Operation Section .....28

Changes to Hardware Reset (RESET) Section.....30

Added Software Reset Section.....30

Updated Outline Dimensions.....34

Changes to Ordering Guide.....35

**11/2015—Rev. A to Rev. B**

Added 20-Lead LFCSP ..... Universal

Change to Features.....1

Changed  $T_A = -40^\circ\text{C}$  to  $+125^\circ\text{C}$  to  $T_{\text{MIN}}$  to  $T_{\text{MAX}}$ .....7

Changes to Table 7 .....11

Added Thermal Resistance Section and Table 8; Renumbered Sequentially .....11

Added Figure 7; Renumbered Sequentially .....12

Changes to Table 9 .....12

Changes to Transfer Function Section, Internal Reference Section, and Output Amplifiers Section .....24

Changes to Table 10 .....25

Changes to Write to and Update DAC Channel n (Independent of LDAC) Section.....26

Changes to Readback Operation Section.....27

Changes to LDAC Mask Register Section and Table 15 .....28

Changes to Reset Select Pin (RSTSEL) Section, Internal Reference Setup Section, Table 17, and Table 18 .....29

Added Amplifier Gain Selection on LFCSP Section .....29

Updated Outline Dimensions.....33

Changes to Ordering Guide.....34

**2/2015—Rev. 0 to Rev. A**

Added AD5672R Specifications Section.....3

Changes to Table 2 .....3

Added AD5676R Specifications Section and Table 3; Renumbered Sequentially .....5

Change to RESET Pulse Activation Parameter, Table 5.....8

Change to Terminology Section.....22

Changes to Transfer Function Section and Output Amplifiers Section .....24

Changes to Hardware Reset (RESET) Section .....29

Changes to Ordering Guide.....33

**10/2014—Revision 0: Initial Version**

## SPECIFICATIONS

## AD5672R SPECIFICATIONS

$V_{DD} = 2.7\text{ V to }5.5\text{ V}$ ,  $1.62\text{ V} \leq V_{LOGIC} \leq 5.5\text{ V}$ , resistive load ( $R_L$ ) = 2 k $\Omega$ , capacitive load ( $C_L$ ) = 200 pF, all specifications  $T_A = -40^\circ\text{C to }+125^\circ\text{C}$ , unless otherwise noted.

Table 2.

| Parameter  | Min    | Typ         | Max        | Unit                         | Test Conditions/Comments  |
|--|--------|-------------|------------|------------------------------|---|
| STATIC PERFORMANCE <sup>1</sup>                  |        |             |            |                              |   |
| Resolution                                       | 12     |             |            | Bits                         |   |
| Relative Accuracy (INL)                          |        | $\pm 0.12$  | $\pm 1$    | LSB                          | Gain = 1  |
|  |        | $\pm 0.12$  | $\pm 1$    | LSB                          | Gain = 2  |
| Differential Nonlinearity (DNL)                  |        | $\pm 0.01$  | $\pm 0.1$  | LSB                          | Gain = 1  |
|  |        | $\pm 0.01$  | $\pm 0.1$  | LSB                          | Gain = 2  |
| Zero Code Error                                  |        | 0.8         | 1.6        | mV                           | Gain = 1 or gain = 2  |
| Offset Error                                     |        | -0.75       | $\pm 2$    | mV                           | Gain = 1  |
|  |        | -0.1        | $\pm 1.5$  | mV                           | Gain = 2  |
| Full-Scale Error                                 |        | -0.018      | $\pm 0.14$ | % of full-scale range (FSR)  | Gain = 1  |
|  |        | -0.013      | $\pm 0.07$ | % of FSR                     | Gain = 2  |
| Gain Error                                       |        | +0.04       | $\pm 0.12$ | % of FSR                     | Gain = 1  |
|  |        | -0.02       | $\pm 0.06$ | % of FSR                     | Gain = 2  |
| TUE  |        | $\pm 0.03$  | $\pm 0.18$ | % of FSR                     | Gain = 1  |
|  |        | $\pm 0.006$ | $\pm 0.14$ | % of FSR                     | Gain = 2  |
| Offset Error Drift                               |        | $\pm 1$     |            | $\mu\text{V}/^\circ\text{C}$ |   |
| DC Power Supply Rejection Ratio (PSRR)           |        | 0.25        |            | mV/V                         | DAC code = midscale, $V_{DD} = 5\text{ V} \pm 10\%$   |
| DC Crosstalk                                     |        | $\pm 2$     |            | $\mu\text{V}$                | Due to single channel, full-scale output change   |
|  |        | $\pm 3$     |            | $\mu\text{V}/\text{mA}$      | Due to load current change  |
|  |        | $\pm 2$     |            | $\mu\text{V}$                | Due to powering down (per channel)  |
| OUTPUT CHARACTERISTICS                           |        |             |            |                              |   |
| Output Voltage Range                             | 0      |             | 2.5        | V                            | Gain = 1  |
|  | 0      |             | 5          | V                            | Gain = 2  |
| Output Current Drive ( $I_{OUT}$ )               |        |             | 15         | mA                           |   |
| Capacitive Load Stability                        |        | 2           |            | nF                           | $R_L = \infty$  |
|  |        | 10          |            | nF                           | $R_L = 1\text{ k}\Omega$  |
| Resistive Load <sup>2</sup>                      | 1      |             |            | k $\Omega$                   |   |
| Load Regulation                                  |        | 183         |            | $\mu\text{V}/\text{mA}$      | $V_{DD} = 5\text{ V} \pm 10\%$ , DAC code = midscale, $-30\text{ mA} \leq I_{OUT} \leq +30\text{ mA}$ |
|  |        | 177         |            | $\mu\text{V}/\text{mA}$      | $V_{DD} = 3\text{ V} \pm 10\%$ , DAC code = midscale, $-20\text{ mA} \leq I_{OUT} \leq +20\text{ mA}$ |
| Short-Circuit Current <sup>3</sup>               |        | 40          |            | mA                           |   |
| Load Impedance at Rails <sup>4</sup>             |        | 25          |            | $\Omega$                     |   |
| Power-Up Time                                    |        | 2.5         |            | $\mu\text{s}$                | Exiting power-down mode, $V_{DD} = 5\text{ V}$  |
| REFERENCE OUTPUT                                 |        |             |            |                              |   |
| Output Voltage <sup>5</sup>                      | 2.4975 |             | 2.5025     | V                            |   |
| Reference Temperature Coefficient <sup>6,7</sup> |        | 2           | 5          | ppm/ $^\circ\text{C}$        | See the Terminology section   |
| Output Impedance                                 |        | 0.04        |            | $\Omega$                     |   |
| Output Voltage Noise                             |        | 13          |            | $\mu\text{V p-p}$            | 0.1 Hz to 10 Hz   |
| Output Voltage Noise Density                     |        | 240         |            | nV/ $\sqrt{\text{Hz}}$       | At ambient temperature, frequency (f) = 10 kHz, $C_L = 10\text{ nF}$ , gain = 1 or 2                  |
| Load Regulation Sourcing                         |        | 29          |            | $\mu\text{V}/\text{mA}$      | At ambient temperature  |
| Load Regulation Sinking                          |        | 74          |            | $\mu\text{V}/\text{mA}$      | At ambient temperature  |
| Output Current Load Capability                   |        | $\pm 20$    |            | mA                           | $V_{DD} \geq 3\text{ V}$  |

| Parameter  | Min                           | Typ | Max                           | Unit                   | Test Conditions/Comments  |
|--|-------------------------------|-----|-------------------------------|------------------------|---|
| Line Regulation  |                               | 43  |                               | $\mu\text{V}/\text{V}$ | At ambient temperature  |
| Long-Term Stability/Drift                                |                               | 12  |                               | ppm                    | After 1000 hours at 125°C   |
| Thermal Hysteresis                                       |                               | 125 |                               | ppm                    | First cycle   |
|  |                               | 25  |                               | ppm                    | Additional cycles   |
| <b>LOGIC INPUTS</b>                                      |                               |     |                               |                        |   |
| Input Current  |                               |     | $\pm 1$                       | $\mu\text{A}$          | Per pin   |
| Input Voltage  |                               |     |                               |                        |   |
| Low, $V_{\text{IL}}$                                     |                               |     | $0.3 \times V_{\text{LOGIC}}$ | V                      |   |
| High, $V_{\text{IH}}$                                    | $0.7 \times V_{\text{LOGIC}}$ |     |                               | V                      |   |
| Pin Capacitance  |                               | 3   |                               | pF                     |   |
| <b>LOGIC OUTPUTS (SDO)</b>                               |                               |     |                               |                        |   |
| Output Voltage   |                               |     |                               |                        |   |
| Low, $V_{\text{OL}}$                                     |                               |     | 0.4                           | V                      | $I_{\text{OL}} = 200 \mu\text{A}$   |
| High, $V_{\text{OH}}$                                    | $V_{\text{LOGIC}} - 0.4$      |     |                               | V                      | $I_{\text{OH}} = -200 \mu\text{A}$  |
| Floating State Output Capacitance                        |                               | 4   |                               | pF                     |   |
| <b>POWER REQUIREMENTS</b>                                |                               |     |                               |                        |   |
| $V_{\text{LOGIC}}$                                       | 1.62                          |     | 5.5                           | V                      |   |
| $V_{\text{LOGIC}}$ Supply Current ( $I_{\text{LOGIC}}$ ) |                               |     | 1                             | $\mu\text{A}$          | Power-on, $-40^\circ\text{C}$ to $+105^\circ\text{C}$   |
|  |                               |     | 1.3                           | $\mu\text{A}$          | Power-on, $-40^\circ\text{C}$ to $+125^\circ\text{C}$   |
|  |                               |     | 0.5                           | $\mu\text{A}$          | Power-down, $-40^\circ\text{C}$ to $+105^\circ\text{C}$   |
|  |                               |     | 1.3                           | $\mu\text{A}$          | Power-down, $-40^\circ\text{C}$ to $+125^\circ\text{C}$   |
| $V_{\text{DD}}$  | 2.7                           |     | 5.5                           | V                      | Gain = 1  |
|  | $V_{\text{REF}} + 1.5$        |     | 5.5                           | V                      | Gain = 2  |
| $V_{\text{DD}}$ Supply Current ( $I_{\text{DD}}$ )       |                               |     |                               |                        | $V_{\text{IH}} = V_{\text{DD}}, V_{\text{IL}} = \text{GND}, V_{\text{DD}} = 2.7\text{V}$ to $5.5\text{V}$ |
| Normal Mode <sup>8</sup>                                 |                               | 1.1 | 1.26                          | mA                     | Internal reference off, $-40^\circ\text{C}$ to $+85^\circ\text{C}$  |
|  |                               | 1.8 | 2.0                           | mA                     | Internal reference on, $-40^\circ\text{C}$ to $+85^\circ\text{C}$   |
|  |                               | 1.1 | 1.3                           | mA                     | Internal reference off  |
|  |                               | 1.8 | 2.1                           | mA                     | Internal reference on   |
| All Power-Down Modes <sup>9</sup>                        |                               | 1   | 1.7                           | $\mu\text{A}$          | Tristate to 1 k $\Omega$ , $-40^\circ\text{C}$ to $+85^\circ\text{C}$                                     |
|  |                               | 1   | 1.7                           | $\mu\text{A}$          | Power-down to 1 k $\Omega$ , $-40^\circ\text{C}$ to $+85^\circ\text{C}$                                   |
|  |                               | 1   | 2.5                           | $\mu\text{A}$          | Tristate, $-40^\circ\text{C}$ to $+105^\circ\text{C}$   |
|  |                               | 1   | 2.5                           | $\mu\text{A}$          | Power-down to 1 k $\Omega$ , $-40^\circ\text{C}$ to $+105^\circ\text{C}$                                  |
|  |                               | 1   | 5.5                           | $\mu\text{A}$          | Tristate to 1 k $\Omega$ , $-40^\circ\text{C}$ to $+125^\circ\text{C}$                                    |
|  |                               | 1   | 5.5                           | $\mu\text{A}$          | Power-down to 1 k $\Omega$ , $-40^\circ\text{C}$ to $+125^\circ\text{C}$                                  |

<sup>1</sup> DC specifications tested with the outputs unloaded, unless otherwise noted. Upper dead band = 10 mV and exists only when the internal reference voltage ( $V_{\text{REF}} = V_{\text{DD}}$ ) with gain = 1, or when  $V_{\text{REF}}/2 = V_{\text{DD}}$  with gain = 2. Linearity calculated using a reduced code range of 12 to 4080.

<sup>2</sup> Together, Channel 0, Channel 1, Channel 2, and Channel 3 can source/sink 40 mA. Similarly, together, Channel 4, Channel 5, Channel 6, and Channel 7 can source/sink 40 mA up to a junction temperature of 125°C.

<sup>3</sup>  $V_{\text{DD}} = 5\text{V}$ . The devices include current limiting intended to protect the devices during temporary overload conditions. Junction temperature can be exceeded during current limit. Operation above the specified maximum operation junction temperature can impair device reliability.

<sup>4</sup> When drawing a load current at either rail, the output voltage headroom with respect to that rail is limited by the 25  $\Omega$  typical channel resistance of the output devices. For example, when sinking 1 mA, the minimum output voltage =  $25 \Omega \times 1 \text{ mA} = 25 \text{ mV}$ .

<sup>5</sup> Initial accuracy presolder reflow is  $\pm 750 \mu\text{V}$ ; output voltage includes the effects of preconditioning drift. See the Internal Reference Setup section.

<sup>6</sup> Reference is trimmed and tested at two temperatures and is characterized from  $-40^\circ\text{C}$  to  $+125^\circ\text{C}$ .

<sup>7</sup> Reference temperature coefficient calculated as per the box method. See the Terminology section for further information.

<sup>8</sup> Interface inactive. All DACs active. DAC outputs unloaded.

<sup>9</sup> All DACs powered down.

## AD5676R SPECIFICATIONS

$V_{DD} = 2.7\text{ V to }5.5\text{ V}$ ,  $1.62\text{ V} \leq V_{LOGIC} \leq 5.5\text{ V}$ ,  $R_L = 2\text{ k}\Omega$ ,  $C_L = 200\text{ pF}$ , all specifications  $T_A = -40^\circ\text{C to }+125^\circ\text{C}$ , unless otherwise noted.

Table 3.

| Parameter  | A Grade |             |            | B Grade |             |            | Unit                         | Test Conditions/Comments  |
|--|---------|-------------|------------|---------|-------------|------------|------------------------------|---|
|  | Min     | Typ         | Max        | Min     | Typ         | Max        |                              |   |
| STATIC PERFORMANCE <sup>1</sup>                  |         |             |            |         |             |            |                              |   |
| Resolution                                       | 16      |             |            | 16      |             |            | Bits                         |   |
| Relative Accuracy (INL)                          |         | $\pm 1.8$   | $\pm 8$    |         | $\pm 1.8$   | $\pm 3$    | LSB                          | Gain = 1  |
|  |         | $\pm 1.7$   | $\pm 8$    |         | $\pm 1.7$   | $\pm 3$    | LSB                          | Gain = 2  |
| Differential Nonlinearity (DNL)                  |         | $\pm 0.7$   | $\pm 1$    |         | $\pm 0.7$   | $\pm 1$    | LSB                          | Gain = 1  |
|  |         | $\pm 0.5$   | $\pm 1$    |         | $\pm 0.5$   | $\pm 1$    | LSB                          | Gain = 2  |
| Zero Code Error                                  |         | 0.8         | 3          |         | 0.8         | 1.6        | mV                           | Gain = 1 or gain = 2  |
| Offset Error                                     |         | $-0.75$     | $\pm 6$    |         | $-0.75$     | $\pm 2$    | mV                           | Gain = 1  |
|  |         | $-0.1$      | $\pm 4$    |         | $-0.1$      | $\pm 1.5$  | mV                           | Gain = 2  |
| Full-Scale Error                                 |         | $-0.018$    | $\pm 0.28$ |         | $-0.018$    | $\pm 0.14$ | % of FSR                     | Gain = 1  |
|  |         | $-0.013$    | $\pm 0.14$ |         | $-0.013$    | $\pm 0.07$ | % of FSR                     | Gain = 2  |
| Gain Error                                       |         | $+0.04$     | $\pm 0.24$ |         | $+0.04$     | $\pm 0.12$ | % of FSR                     | Gain = 1  |
|  |         | $-0.02$     | $\pm 0.12$ |         | $-0.02$     | $\pm 0.06$ | % of FSR                     | Gain = 2  |
| TUE  |         | $\pm 0.03$  | $\pm 0.3$  |         | $\pm 0.03$  | $\pm 0.18$ | % of FSR                     | Gain = 1  |
|  |         | $\pm 0.006$ | $\pm 0.25$ |         | $\pm 0.006$ | $\pm 0.14$ | % of FSR                     | Gain = 2  |
| Offset Error Drift                               |         | $\pm 1$     |            |         | $\pm 1$     |            | $\mu\text{V}/^\circ\text{C}$ |   |
| DC Power Supply Rejection Ratio (PSRR)           |         | 0.25        |            |         | 0.25        |            | mV/V                         | DAC code = midscale, $V_{DD} = 5\text{ V} \pm 10\%$   |
| DC Crosstalk                                     |         | $\pm 2$     |            |         | $\pm 2$     |            | $\mu\text{V}$                | Due to single channel, full-scale output change   |
|  |         | $\pm 3$     |            |         | $\pm 3$     |            | $\mu\text{V}/\text{mA}$      | Due to load current change  |
|  |         | $\pm 2$     |            |         | $\pm 2$     |            | $\mu\text{V}$                | Due to powering down (per channel)  |
| OUTPUT CHARACTERISTICS                           |         |             |            |         |             |            |                              |   |
| Output Voltage Range                             | 0       |             | 2.5        | 0       |             | 2.5        | V                            | Gain = 1  |
|  | 0       |             | 5          | 0       |             | 5          | V                            | Gain = 2  |
| Output Current Drive                             |         |             | 15         |         |             | 15         | mA                           |   |
| Capacitive Load Stability                        |         | 2           |            |         | 2           |            | nF                           | $R_L = \infty$  |
|  |         | 10          |            |         | 10          |            | nF                           | $R_L = 1\text{ k}\Omega$  |
| Resistive Load <sup>2</sup>                      | 1       |             |            | 1       |             |            | k $\Omega$                   |   |
| Load Regulation                                  |         | 183         |            |         | 183         |            | $\mu\text{V}/\text{mA}$      | $V_{DD} = 5\text{ V} \pm 10\%$ , DAC code = midscale, $-30\text{ mA} \leq I_{OUT} \leq +30\text{ mA}$ |
|  |         | 177         |            |         | 177         |            | $\mu\text{V}/\text{mA}$      | $V_{DD} = 3\text{ V} \pm 10\%$ , DAC code = midscale, $-20\text{ mA} \leq I_{OUT} \leq +20\text{ mA}$ |
| Short-Circuit Current <sup>3</sup>               |         | 40          |            |         | 40          |            | mA                           |   |
| Load Impedance at Rails <sup>4</sup>             |         | 25          |            |         | 25          |            | $\Omega$                     |   |
| Power-Up Time                                    |         | 2.5         |            |         | 2.5         |            | $\mu\text{s}$                | Exiting power-down mode, $V_{DD} = 5\text{ V}$  |
| REFERENCE OUTPUT                                 |         |             |            |         |             |            |                              |   |
| Output Voltage <sup>5</sup>                      | 2.4975  |             | 2.5025     | 2.4975  |             | 2.5025     | V                            |   |
| Reference Temperature Coefficient <sup>6,7</sup> |         | 5           | 20         |         | 2           | 5          | ppm/ $^\circ\text{C}$        | See the Terminology section   |
| Output Impedance                                 |         | 0.04        |            |         | 0.04        |            | $\Omega$                     |   |
| Output Voltage Noise                             |         | 13          |            |         | 13          |            | $\mu\text{V p-p}$            | 0.1 Hz to 10 Hz   |
| Output Voltage Noise Density                     |         | 240         |            |         | 240         |            | nV/ $\sqrt{\text{Hz}}$       | At ambient temperature, $f = 10\text{ kHz}$ , $C_L = 10\text{ nF}$ , gain = 1 or 2                    |
| Load Regulation Sourcing                         |         | 29          |            |         | 29          |            | $\mu\text{V}/\text{mA}$      | At ambient temperature  |
| Load Regulation Sinking                          |         | 74          |            |         | 74          |            | $\mu\text{V}/\text{mA}$      | At ambient temperature  |
| Output Current Load Capability                   |         | $\pm 20$    |            |         | $\pm 20$    |            | mA                           | $V_{DD} \geq 3\text{ V}$  |
| Line Regulation                                  |         | 43          |            |         | 43          |            | $\mu\text{V}/\text{V}$       | At ambient temperature  |
| Long-Term Stability/Drift                        |         | 12          |            |         | 12          |            | ppm                          | After 1000 hours at $125^\circ\text{C}$   |
| Thermal Hysteresis                               |         | 125         |            |         | 125         |            | ppm                          | First cycle   |
|  |         | 25          |            |         | 25          |            | ppm                          | Additional cycles   |

| Parameter                            | A Grade                |     |                        | B Grade                |     |                        | Unit | Test Conditions/Comments   |
|--------------------------------------|------------------------|-----|------------------------|------------------------|-----|------------------------|------|--|
|                                      | Min                    | Typ | Max                    | Min                    | Typ | Max                    |      |  |
| LOGIC INPUTS                         |                        |     |                        |                        |     |                        |      |  |
| Input Current                        |                        |     | ±1                     |                        |     | ±1                     | μA   | Per pin  |
| Input Voltage<br>Low, $V_{INL}$      |                        |     | $0.3 \times V_{LOGIC}$ |                        |     | $0.3 \times V_{LOGIC}$ | V    |  |
| High, $V_{INH}$                      | $0.7 \times V_{LOGIC}$ |     |                        | $0.7 \times V_{LOGIC}$ |     |                        | V    |  |
| Pin Capacitance                      |                        | 3   |                        |                        | 3   |                        | pF   |  |
| LOGIC OUTPUTS (SDO)                  |                        |     |                        |                        |     |                        |      |  |
| Output Voltage<br>Low, $V_{OL}$      |                        |     | 0.4                    |                        |     | 0.4                    | V    | $I_{SINK} = 200 \mu A$<br>$I_{SOURCE} = 200 \mu A$               |
| High, $V_{OH}$                       | $V_{LOGIC} - 0.4$      |     |                        | $V_{LOGIC} - 0.4$      |     |                        | V    |  |
| Floating State Output<br>Capacitance |                        | 4   |                        |                        | 4   |                        | pF   |  |
| POWER REQUIREMENTS                   |                        |     |                        |                        |     |                        |      |  |
| $V_{LOGIC}$                          | 1.62                   |     | 5.5                    | 1.62                   |     | 5.5                    | V    |  |
| $I_{LOGIC}$                          |                        |     | 1                      |                        |     | 1                      | μA   | Power-on, -40°C to +105°C  |
|                                      |                        |     | 1.3                    |                        |     | 1.3                    | μA   | Power-on, -40°C to +125°C  |
|                                      |                        |     | 0.5                    |                        |     | 0.5                    | μA   | Power-down, -40°C to +105°C                                      |
|                                      |                        |     | 1.3                    |                        |     | 1.3                    | μA   | Power-down, -40°C to +125°C                                      |
| $V_{DD}$                             | 2.7                    |     | 5.5                    | 2.7                    |     | 5.5                    | V    | Gain = 1   |
|                                      | $V_{REF} + 1.5$        |     | 5.5                    | $V_{REF} + 1.5$        |     | 5.5                    | V    | Gain = 2   |
| $I_{DD}$                             |                        |     |                        |                        |     |                        |      | $V_{IH} = V_{DD}$ , $V_{IL} = GND$ , $V_{DD} = 2.7 V$ to $5.5 V$ |
| Normal Mode <sup>8</sup>             |                        | 1.1 | 1.26                   |                        | 1.1 | 1.26                   | mA   | Internal reference off, -40°C to +85°C                           |
|                                      |                        | 1.8 | 2.0                    |                        | 1.8 | 2.0                    | mA   | Internal reference on, -40°C to +85°C                            |
|                                      |                        | 1.1 | 1.3                    |                        | 1.1 | 1.3                    | mA   | Internal reference off   |
|                                      |                        | 1.8 | 2.1                    |                        | 1.8 | 2.1                    | mA   | Internal reference on  |
| All Power-Down Modes <sup>9</sup>    |                        | 1   | 1.7                    |                        | 1   | 1.7                    | μA   | Tristate to 1 kΩ, -40°C to +85°C                                 |
|                                      |                        | 1   | 1.7                    |                        | 1   | 1.7                    | μA   | Power-down to 1 kΩ, -40°C to +85°C                               |
|                                      |                        | 1   | 2.5                    |                        | 1   | 2.5                    | μA   | Tristate, -40°C to +105°C  |
|                                      |                        | 1   | 2.5                    |                        | 1   | 2.5                    | μA   | Power-down to 1 kΩ, -40°C to +105°C                              |
|                                      |                        | 1   | 5.5                    |                        | 1   | 5.5                    | μA   | Tristate to 1 kΩ, -40°C to +125°C                                |
|                                      |                        | 1   | 5.5                    |                        | 1   | 5.5                    | μA   | Power-down to 1 kΩ, -40°C to +125°C                              |

<sup>1</sup> DC specifications tested with the outputs unloaded, unless otherwise noted. Upper dead band = 10 mV and exists only when  $V_{REF} = V_{DD}$  with gain = 1, or when  $V_{REF}/2 = V_{DD}$  with gain = 2. Linearity calculated using a reduced code range of 256 to 65,280.

<sup>2</sup> Together, Channel 0, Channel 1, Channel 2, and Channel 3 can source/sink 40 mA. Similarly, together, Channel 4, Channel 5, Channel 6, and Channel 7 can source/sink 40 mA up to a junction temperature of 125°C.

<sup>3</sup>  $V_{DD} = 5 V$ . The devices include current limiting intended to protect the devices during temporary overload conditions. Junction temperature can be exceeded during current limit. Operation above the specified maximum operation junction temperature can impair device reliability.

<sup>4</sup> When drawing a load current at either rail, the output voltage headroom with respect to that rail is limited by the 25 Ω typical channel resistance of the output devices. For example, when sinking 1 mA, the minimum output voltage =  $25 \Omega \times 1 \text{ mA} = 25 \text{ mV}$ .

<sup>5</sup> Initial accuracy presolder reflow is  $\pm 750 \mu V$ ; output voltage includes the effects of preconditioning drift. See the Internal Reference Setup section.

<sup>6</sup> Reference is trimmed and tested at two temperatures and is characterized from -40°C to +125°C.

<sup>7</sup> Reference temperature coefficient calculated as per the box method. See the Terminology section for further information.

<sup>8</sup> Interface inactive. All DACs active. DAC outputs unloaded.

<sup>9</sup> All DACs powered down.

**AC CHARACTERISTICS**

$V_{DD} = 2.7\text{ V to }5.5\text{ V}$ ,  $1.62\text{ V} \leq V_{LOGIC} \leq 5.5\text{ V}$ ,  $R_L = 2\text{ k}\Omega$  to GND,  $C_L = 200\text{ pF}$  to GND, all specifications  $T_{MIN}$  to  $T_{MAX}$  unless otherwise noted. The operating temperature range is  $-40^\circ\text{C}$  to  $+125^\circ\text{C}$ ;  $T_A = 25^\circ\text{C}$ .

**Table 4.**

| Parameter                                     | Min | Typ   | Max | Unit                         | Test Conditions/Comments   |
|---|-----|-------|-----|------------------------------|--|
| OUTPUT VOLTAGE SETTling TIME <sup>1</sup>     |     |       |     |                              |  |
| AD5672R                                       |     | 5     | 8   | $\mu\text{s}$                | $\frac{1}{4}$ to $\frac{3}{4}$ scale settling to $\pm 2$ LSB                                       |
| AD5676R                                       |     | 5     | 8   | $\mu\text{s}$                | $\frac{1}{4}$ to $\frac{3}{4}$ scale settling to $\pm 2$ LSB                                       |
| SLEW RATE                                     |     | 0.8   |     | $\text{V}/\mu\text{s}$       |  |
| DIGITAL-TO-ANALOG GLITCH IMPULSE <sup>1</sup> |     | 1.4   |     | $\text{nV}\cdot\text{sec}$   | 1 LSB change around major carry (internal reference, gain = 1)                                     |
| DIGITAL FEEDTHROUGH <sup>1</sup>              |     | 0.13  |     | $\text{nV}\cdot\text{sec}$   |  |
| CROSSTALK <sup>1</sup>                        |     |       |     |                              |  |
| Digital                                       |     | 0.1   |     | $\text{nV}\cdot\text{sec}$   | Internal reference, gain = 2   |
| Analog  |     | -0.25 |     | $\text{nV}\cdot\text{sec}$   |  |
|   |     | -1.3  |     | $\text{nV}\cdot\text{sec}$   |  |
| DAC-to-DAC                                    |     | -2.0  |     | $\text{nV}\cdot\text{sec}$   |  |
| TOTAL HARMONIC DISTORTION <sup>2</sup>        |     | -80   |     | $\text{dB}$                  | At $T_A$ , bandwidth = 20 kHz, $V_{DD} = 5\text{ V}$ , $f_{OUT} = 1\text{ kHz}$                    |
| OUTPUT NOISE SPECTRAL DENSITY <sup>1</sup>    |     | 300   |     | $\text{nV}/\sqrt{\text{Hz}}$ | DAC code = midscale, 10 kHz, gain = 2  |
| OUTPUT NOISE <sup>1</sup>                     |     | 6     |     | $\mu\text{V p-p}$            | 0.1 Hz to 10 Hz, gain = 1  |
| SIGNAL-TO-NOISE RATIO (SNR)                   |     | 90    |     | $\text{dB}$                  | At $T_A = 25^\circ\text{C}$ , bandwidth = 20 kHz, $V_{DD} = 5\text{ V}$ , $f_{OUT} = 1\text{ kHz}$ |
| SPURIOUS-FREE DYNAMIC RANGE (SFDR)            |     | 83    |     | $\text{dB}$                  | At $T_A = 25^\circ\text{C}$ , bandwidth = 20 kHz, $V_{DD} = 5\text{ V}$ , $f_{OUT} = 1\text{ kHz}$ |
| SIGNAL-TO-NOISE-AND-DISTORTION RATIO (SINAD)  |     | 80    |     | $\text{dB}$                  | At $T_A = 25^\circ\text{C}$ , bandwidth = 20 kHz, $V_{DD} = 5\text{ V}$ , $f_{OUT} = 1\text{ kHz}$ |

<sup>1</sup> See the Terminology section. Measured using internal reference and gain = 1, unless otherwise noted.

<sup>2</sup> Digitally generated sine wave ( $f_{OUT}$ ) at 1 kHz.



**TIMING CHARACTERISTICS**

All input signals are specified with  $t_R = t_F = 1 \text{ ns/V}$  (10% to 90% of  $V_{DD}$ ) and timed from a voltage level of  $(V_{IL} + V_{IH})/2$ . See Figure 2.  $V_{DD} = 2.7 \text{ V to } 5.5 \text{ V}$ ,  $1.62 \text{ V} \leq V_{LOGIC} \leq 5.5 \text{ V}$ ;  $V_{REFIN} = 2.5 \text{ V}$ . All specifications  $T_{MIN}$  to  $T_{MAX}$ , unless otherwise noted.

Table 5.

| Parameter   | Symbol          | 1.62 V ≤ V <sub>LOGIC</sub> < 2.7 V |     | 2.7 V ≤ V <sub>LOGIC</sub> ≤ 5.5 V |     | Unit |
|---|-----------------|-------------------------------------|-----|------------------------------------|-----|------|
|   |                 | Min                                 | Max | Min                                | Max |      |
| SCLK Cycle Time   | t <sub>1</sub>  | 20                                  |     | 20                                 |     | ns   |
| SCLK High Time  | t <sub>2</sub>  | 8                                   |     | 8                                  |     | ns   |
| SCLK Low Time   | t <sub>3</sub>  | 10                                  |     | 12                                 |     | ns   |
| SYNC to SCLK Falling Edge Setup Time                        | t <sub>4</sub>  | 15                                  |     | 11                                 |     | ns   |
| Data Setup Time   | t <sub>5</sub>  | 2                                   |     | 3                                  |     | ns   |
| Data Hold Time  | t <sub>6</sub>  | 2                                   |     | 2                                  |     | ns   |
| SCLK Falling Edge to SYNC Rising Edge                       | t <sub>7</sub>  | 4                                   |     | 4                                  |     | ns   |
| Minimum SYNC High Time                                      | t <sub>8</sub>  | 15                                  |     | 12                                 |     | ns   |
| SYNC Rising Edge to SYNC Rising Edge (DAC Register Updates) | t <sub>9</sub>  | 870                                 |     | 830                                |     | ns   |
| SYNC Falling Edge to SCLK Fall Ignore                       | t <sub>10</sub> | 4                                   |     | 4                                  |     | ns   |
| LDAC Pulse Width Low  | t <sub>11</sub> | 8                                   |     | 8                                  |     | ns   |
| SYNC Rising Edge to LDAC Rising Edge                        | t <sub>12</sub> | 25                                  |     | 25                                 |     | ns   |
| SYNC Rising Edge to LDAC Falling Edge                       | t <sub>13</sub> | 25                                  |     | 25                                 |     | ns   |
| LDAC Falling Edge to SYNC Rising Edge                       | t <sub>14</sub> | 840                                 |     | 800                                |     | ns   |
| Minimum Pulse Width Low                                     | t <sub>15</sub> | 8                                   |     | 10                                 |     | ns   |
| RESET Activation Time                                       | t <sub>16</sub> | 90                                  |     | 90                                 |     | ns   |
| Power-Up Time <sup>1</sup>                                  |                 | 5.5                                 |     | 5.5                                |     | μs   |

<sup>1</sup> Time to exit power-down to normal mode of AD5672R/AD5676R operation, SYNC rising edge to 90% of DAC midscale value, with output unloaded.

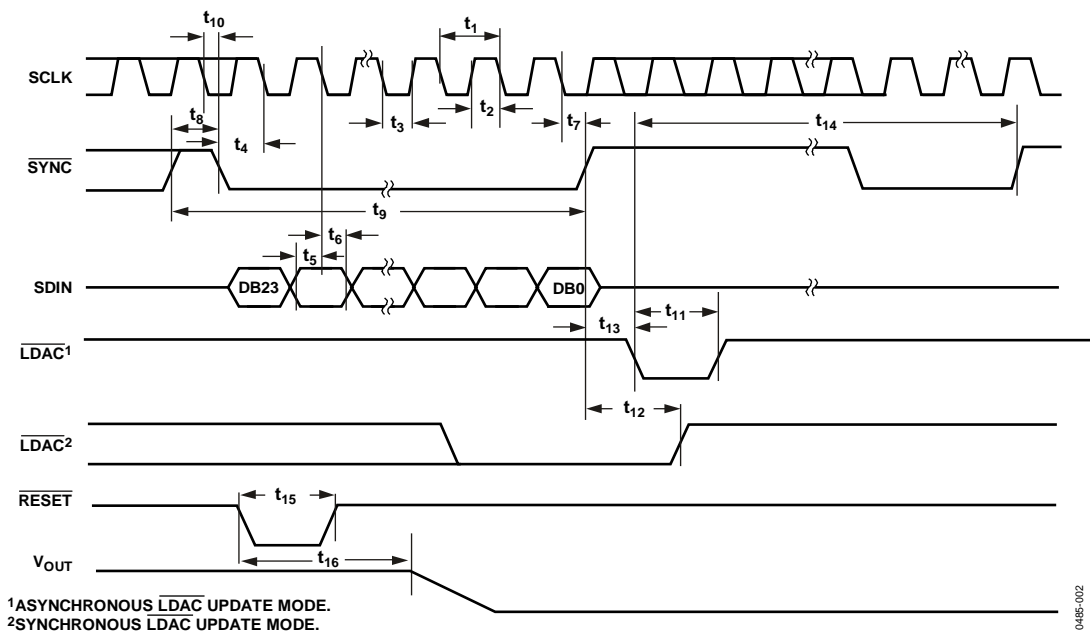


Figure 2. Serial Write Operation

**DAISY-CHAIN AND READBACK TIMING CHARACTERISTICS**

All input signals are specified with  $t_R = t_F = 1 \text{ ns/V}$  (10% to 90% of  $V_{DD}$ ) and timed from a voltage level of  $(V_{IL} + V_{IH})/2$ . See Figure 4 and Figure 5.  $V_{DD} = 2.7 \text{ V to } 5.5 \text{ V}$ ,  $1.62 \text{ V} \leq V_{LOGIC} \leq 5.5 \text{ V}$ ;  $V_{REF} = 2.5 \text{ V}$ . All specifications  $T_{MIN}$  to  $T_{MAX}$ , unless otherwise noted.  $V_{DD} = 2.7 \text{ V to } 5.5 \text{ V}$ .

Table 6.

| Parameter                             | Symbol          | 1.62 V ≤ V <sub>LOGIC</sub> < 2.7 V |     | 2.7 V ≤ V <sub>LOGIC</sub> ≤ 5.5 V |     | Unit |
|---------------------------------------|-----------------|-------------------------------------|-----|------------------------------------|-----|------|
|                                       |                 | Min                                 | Max | Min                                | Max |      |
| SCLK Cycle Time                       | t <sub>1</sub>  | 130                                 |     | 110                                |     | ns   |
| SCLK High Time                        | t <sub>2</sub>  | 33                                  |     | 23                                 |     | ns   |
| SCLK Low Time                         | t <sub>3</sub>  | 12                                  |     | 7                                  |     | ns   |
| SYNC to SCLK Falling Edge             | t <sub>4</sub>  | 80                                  |     | 80                                 |     | ns   |
| Data Setup Time                       | t <sub>5</sub>  | 2                                   |     | 2                                  |     | ns   |
| Data Hold Time                        | t <sub>6</sub>  | 2                                   |     | 2                                  |     | ns   |
| SCLK Falling Edge to SYNC Rising Edge | t <sub>7</sub>  | 35                                  |     | 10                                 |     | ns   |
| Minimum SYNC High Time                | t <sub>8</sub>  | 55                                  |     | 30                                 |     | ns   |
| SDO Data Valid from SCLK Rising Edge  | t <sub>9</sub>  | 60                                  |     | 50                                 |     | ns   |
| SYNC Rising Edge to SCLK Falling Edge | t <sub>10</sub> | 2                                   |     | 6                                  |     | ns   |
| SYNC Rising Edge to SDO Disable       | t <sub>11</sub> | 40                                  |     | 35                                 |     | ns   |

**Circuit and Timing Diagrams**

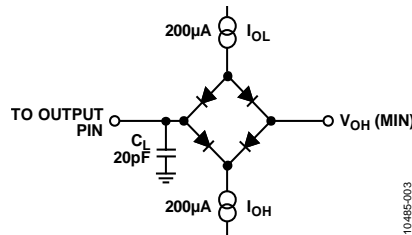


Figure 3. Load Circuit for Digital Output (SDO) Timing Specifications

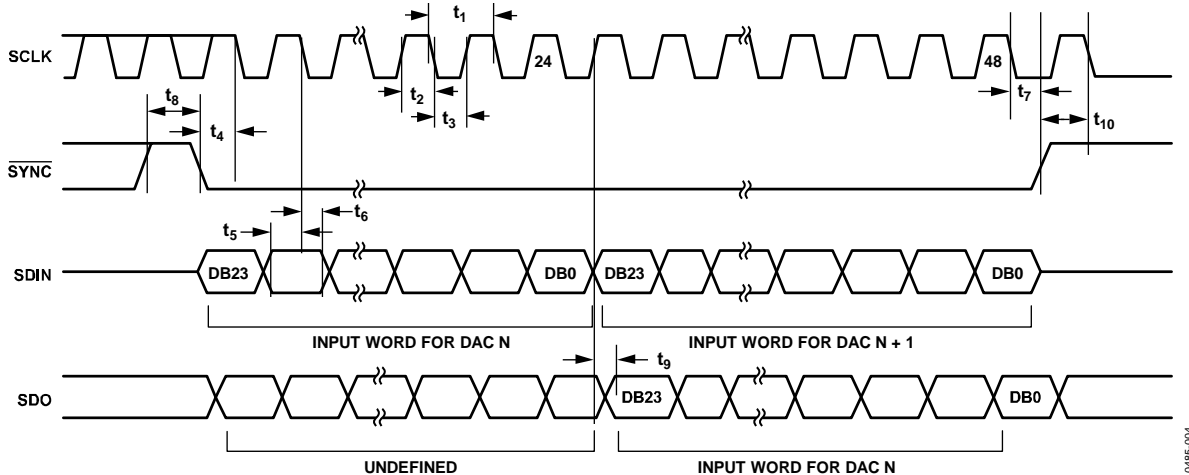


Figure 4. Daisy Chain Timing Diagram

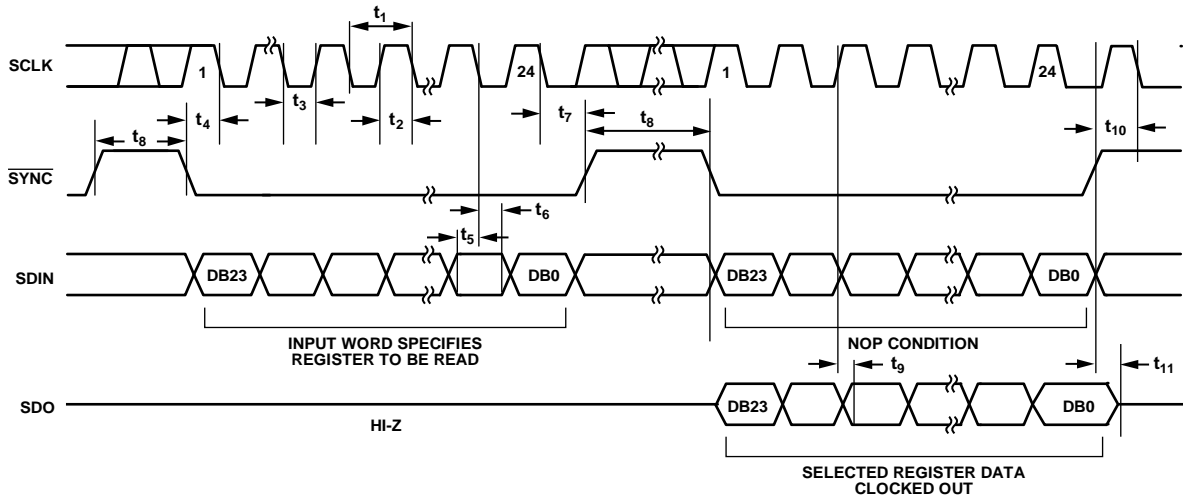


Figure 5. Readback Timing Diagram

10485-005

## ABSOLUTE MAXIMUM RATINGS

$T_A = 25^\circ\text{C}$ , unless otherwise noted.

Table 7.

| Parameter  | Rating                        |
|--|-------------------------------|
| $V_{DD}$ to GND  | -0.3 V to +7 V                |
| $V_{LOGIC}$ to GND                                     | -0.3 V to +7 V                |
| $V_{OUTX}$ to GND                                      | -0.3 V to $V_{DD} + 0.3$ V    |
| $V_{REF}$ to GND                                       | -0.3 V to $V_{DD} + 0.3$ V    |
| Digital Input Voltage to GND                           | -0.3 V to $V_{LOGIC} + 0.3$ V |
| Operating Temperature Range                            | -40°C to +125°C               |
| Storage Temperature Range                              | -65°C to +150°C               |
| Junction Temperature                                   | 125°C                         |
| Reflow Soldering Peak Temperature, Pb-Free (J-STD-020) | 260°C                         |

Stresses at or above those listed under Absolute Maximum Ratings may cause permanent damage to the product. This is a stress rating only; functional operation of the product at these or any other conditions above those indicated in the operational section of this specification is not implied. Operation beyond the maximum operating conditions for extended periods may affect product reliability.

## THERMAL RESISTANCE

Thermal performance is directly linked to printed circuit board (PCB) design and operating environment. Careful attention to PCB thermal design is required.

Table 8. Thermal Resistance

| Package Type                         | $\theta_{JA}$ | $\theta_{JB}$ | $\theta_{JC}$ | $\Psi_{JT}$ | $\Psi_{JB}$ | Unit |
|--------------------------------------|---------------|---------------|---------------|-------------|-------------|------|
| 20-Lead TSSOP (RU-20) <sup>1</sup>   | 98.65         | 44.39         | 17.58         | 1.77        | 43.9        | °C/W |
| 20-Lead LFCSP (CP-20-8) <sup>2</sup> | 82            | 16.67         | 32.5          | 0.43        | 22          | °C/W |

<sup>1</sup> Thermal impedance simulated values are based on a JEDEC 2S2P thermal test board. See JEDEC JESD51.

<sup>2</sup> Thermal impedance simulated values are based on a JEDEC 2S2P thermal test board with nine thermal vias. See JEDEC JESD51.

## ESD CAUTION



**ESD (electrostatic discharge) sensitive device.** Charged devices and circuit boards can discharge without detection. Although this product features patented or proprietary protection circuitry, damage may occur on devices subjected to high energy ESD. Therefore, proper ESD precautions should be taken to avoid performance degradation or loss of functionality.

# PIN CONFIGURATIONS AND FUNCTION DESCRIPTIONS

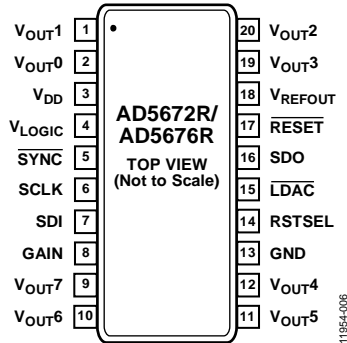
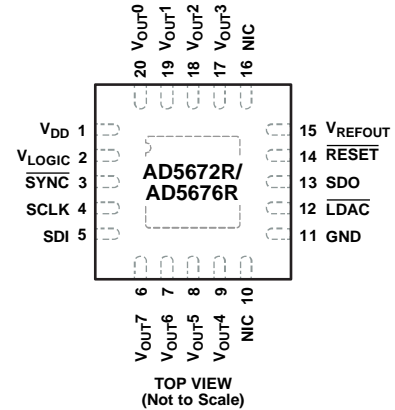


Figure 6. TSSOP Pin Configuration



NOTES  
 1. NIC = NO INTERNAL CONNECTION.  
 2. THE EXPOSED PAD MUST BE TIED TO GND.

Figure 7. LFCSP Pin Configuration

Table 9. Pin Function Descriptions

| Pin No.          |                  | Mnemonic            | Description  |
|------------------|------------------|---------------------|--|
| TSSOP            | LFCSP            |                     |  |
| 1                | 19               | V <sub>OUT1</sub>   | Analog Output Voltage from DAC 1. The output amplifier has rail-to-rail operation.   |
| 2                | 20               | V <sub>OUT0</sub>   | Analog Output Voltage from DAC 0. The output amplifier has rail-to-rail operation.   |
| 3                | 1                | V <sub>DD</sub>     | Power Supply Input. These devices operate from 2.7 V to 5.5 V. Decouple the V <sub>DD</sub> supply with a 10 μF capacitor in parallel with a 0.1 μF capacitor to GND.  |
| 4                | 2                | V <sub>LOGIC</sub>  | Digital Power Supply. The voltage on this pin ranges from 1.62 V to 5.5 V.   |
| 5                | 3                | SYNC                | Active Low Control Input. This is the frame synchronization signal for the input data. When SYNC goes low, data transfers in on the falling edges of the next 24 clocks.   |
| 6                | 4                | SCLK                | Serial Clock Input. Data is clocked into the input shift register on the falling edge of the serial clock input. Data transfers at rates of up to 50 MHz.  |
| 7                | 5                | SDI                 | Serial Data Input. This device has a 24-bit input shift register. Data is clocked into the register on the falling edge of the serial clock input.   |
| 8                | N/A <sup>1</sup> | GAIN                | Span Set Pin. When this pin is tied to GND, all eight DAC outputs have a span from 0 V to V <sub>REF</sub> . If this pin is tied to V <sub>LOGIC</sub> , all eight DACs output a span of 0 V to 2 × V <sub>REF</sub> .   |
| 9                | 6                | V <sub>OUT7</sub>   | Analog Output Voltage from DAC 7. The output amplifier has rail-to-rail operation.   |
| 10               | 7                | V <sub>OUT6</sub>   | Analog Output Voltage from DAC 6. The output amplifier has rail-to-rail operation.   |
| 11               | 8                | V <sub>OUT5</sub>   | Analog Output Voltage from DAC 5. The output amplifier has rail-to-rail operation.   |
| 12               | 9                | V <sub>OUT4</sub>   | Analog Output Voltage from DAC 4. The output amplifier has rail-to-rail operation.   |
| N/A <sup>1</sup> | 10               | NIC                 | No Internal Connection.  |
| 13               | 11               | GND                 | Ground Reference Point for All Circuitry on the Device.  |
| 14               | N/A <sup>1</sup> | RSTSEL              | Power-On Reset Pin. Tie this pin to GND to power up all eight DACs to zero scale. Tie this pin to V <sub>LOGIC</sub> to power up all eight DACs to midscale.   |
| 15               | 12               | LDAC                | Load DAC. LDAC operates in two modes, asynchronously and synchronously. Pulsing this pin low allows any or all DAC registers to be updated if the input registers have new data, which allows all DAC outputs to update simultaneously. This pin can also be tied permanently low. |
| 16               | 13               | SDO                 | Serial Data Output. This pin can be used to daisy-chain a number of devices together, or it can be used for readback. The serial data transfers on the rising edge of SCLK and is valid on the falling edge.   |
| 17               | 14               | RESET               | Asynchronous Reset Input. The RESET input is falling edge sensitive. When RESET is low, all LDAC pulses are ignored. When RESET is activated, the input register and the DAC register are updated with zero scale or midscale, depending on the state of the RSTSEL pin.           |
| 18               | 15               | V <sub>REFOUT</sub> | Reference Output Voltage. When using the internal reference, this is the reference output pin.   |
| 19               | 17               | V <sub>OUT3</sub>   | Analog Output Voltage from DAC 3. The output amplifier has rail-to-rail operation.   |
| 20               | 18               | V <sub>OUT2</sub>   | Analog Output Voltage from DAC 2. The output amplifier has rail-to-rail operation.   |
| N/A <sup>1</sup> | 0                | EPAD                | Exposed Pad. The exposed pad must be tied to GND.  |

<sup>1</sup> N/A means not applicable.

TYPICAL PERFORMANCE CHARACTERISTICS

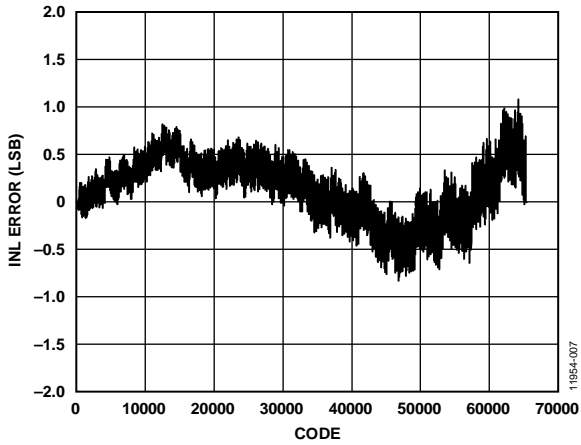


Figure 8. AD5676R INL Error vs. Code

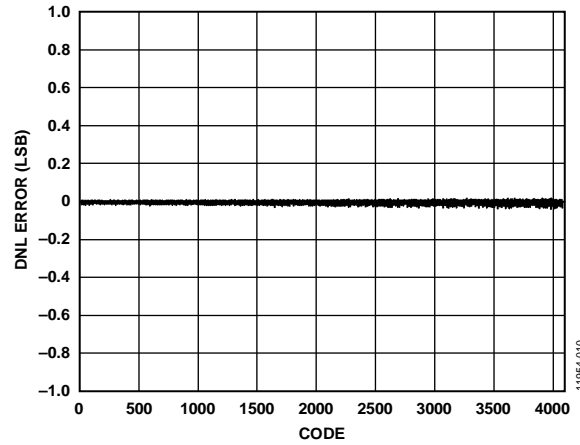


Figure 11. AD5672R DNL Error vs. Code

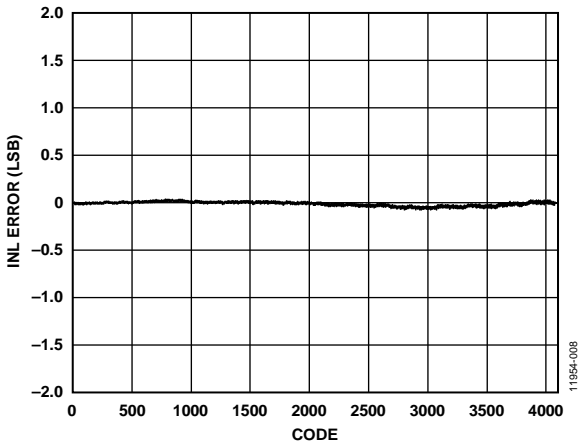


Figure 9. AD5672R INL Error vs. Code

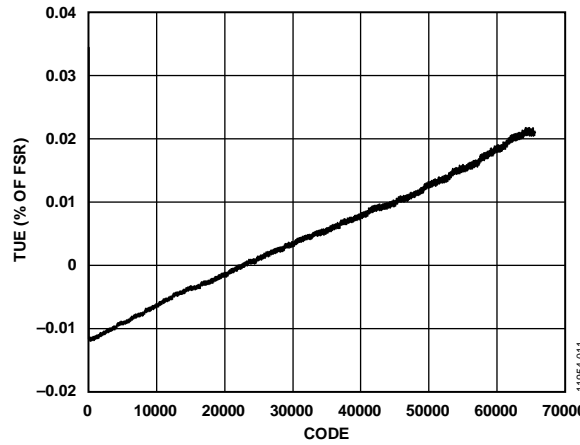


Figure 12. AD5676R TUE vs. Code

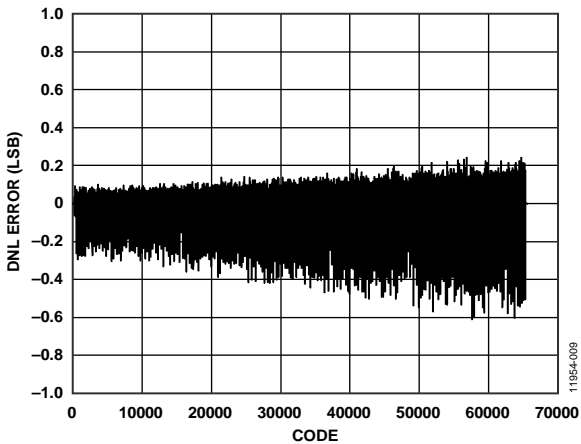


Figure 10. AD5676R DNL Error vs. Code

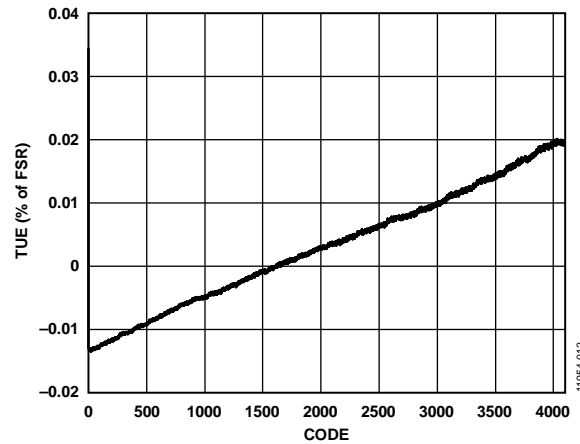


Figure 13. AD5672R TUE vs. Code

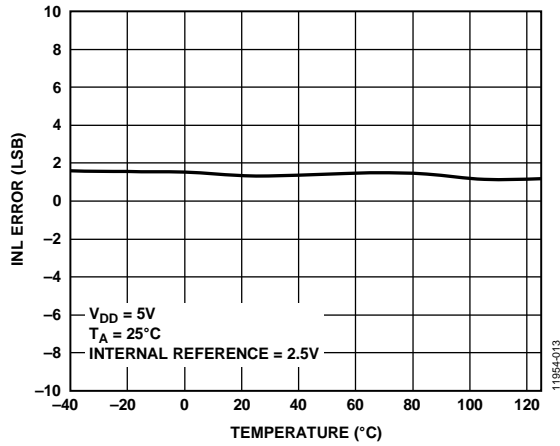


Figure 14. AD5676R INL Error vs. Temperature

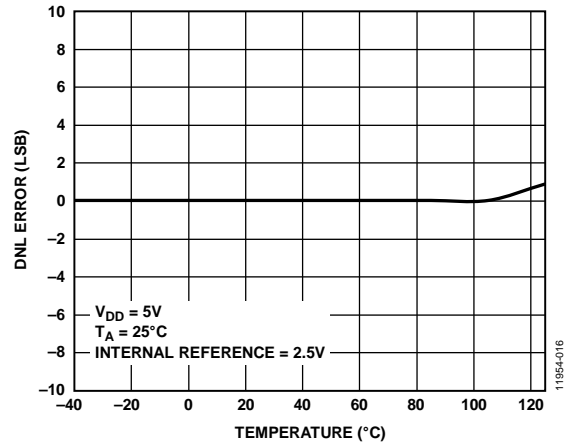


Figure 17. AD5672R DNL Error vs. Temperature

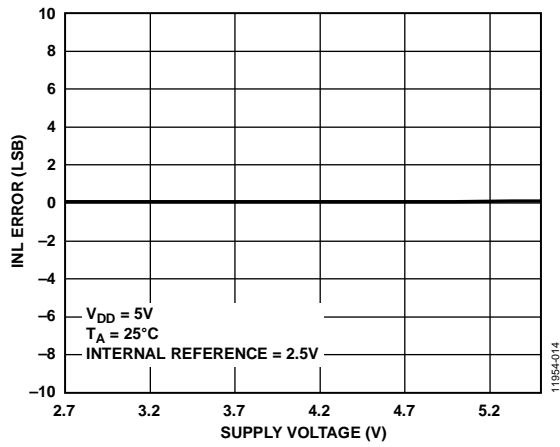


Figure 15. AD5672R INL Error vs. Supply Voltage

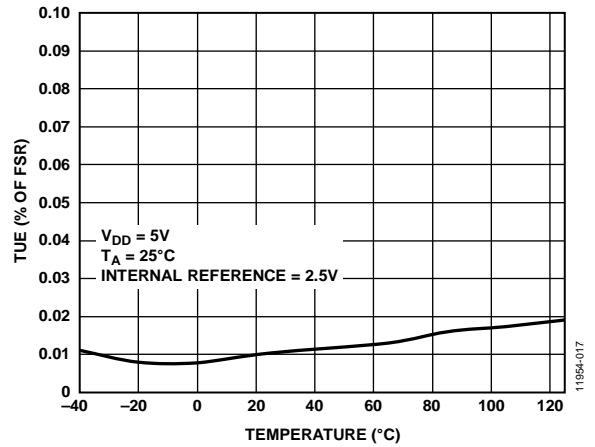


Figure 18. AD5676R TUE vs. Temperature

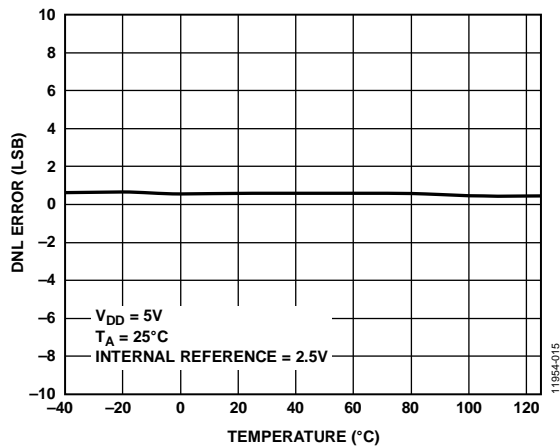


Figure 16. AD5676R DNL Error vs. Temperature

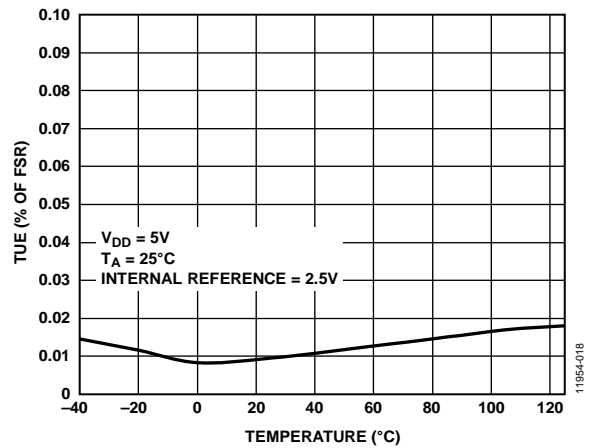


Figure 19. AD5672R TUE vs. Temperature

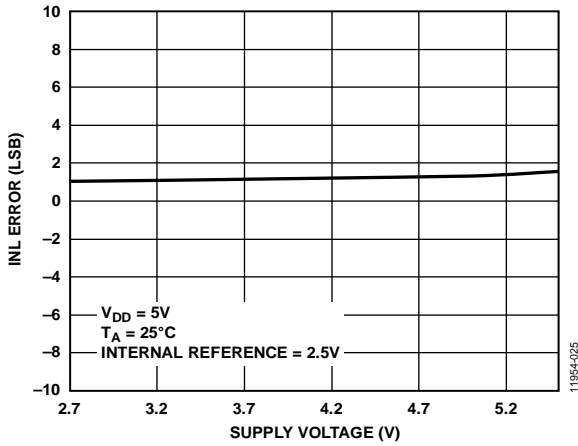


Figure 20. AD5676R INL Error vs. Supply Voltage

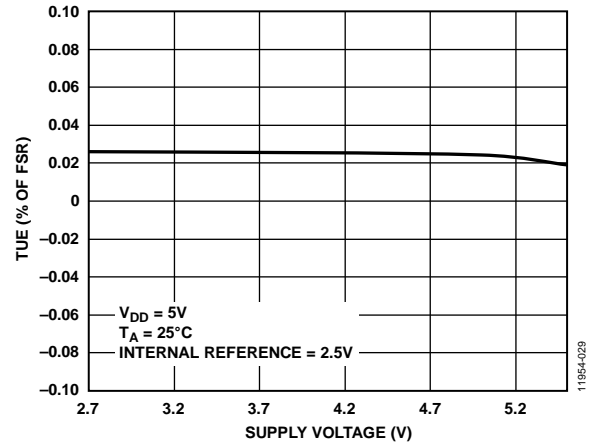


Figure 23. AD5676R TUE vs. Supply Voltage

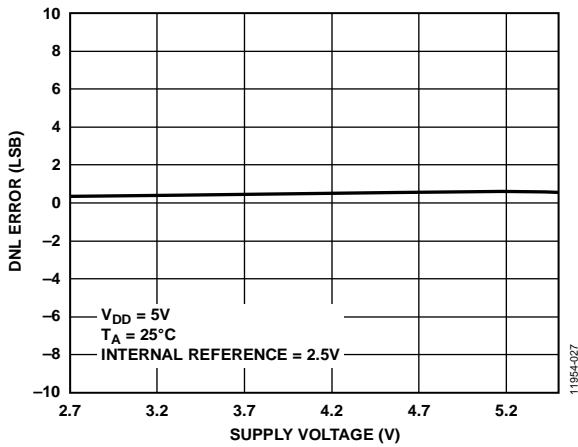


Figure 21. AD5676R DNL Error vs. Supply Voltage

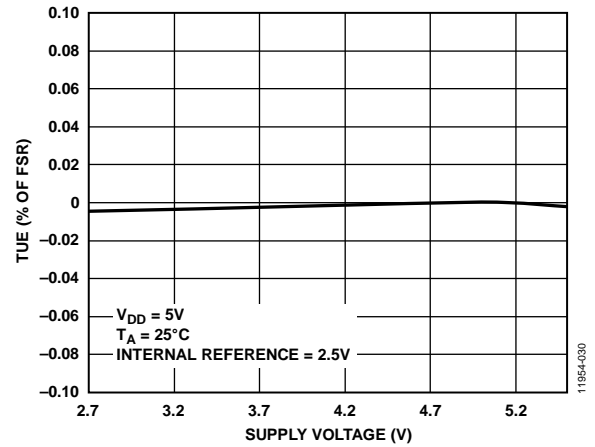


Figure 24. AD5672R TUE vs. Supply Voltage

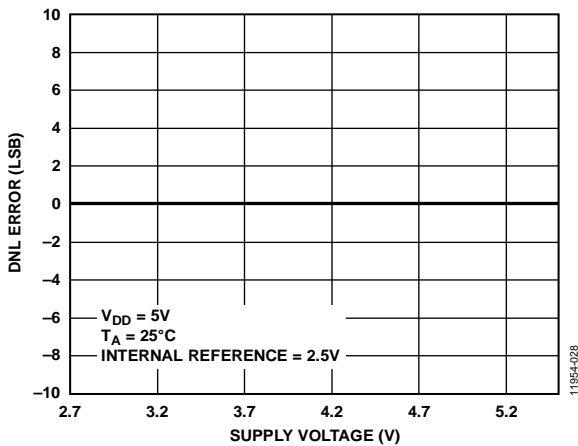


Figure 22. AD5672R DNL Error vs. Supply Voltage

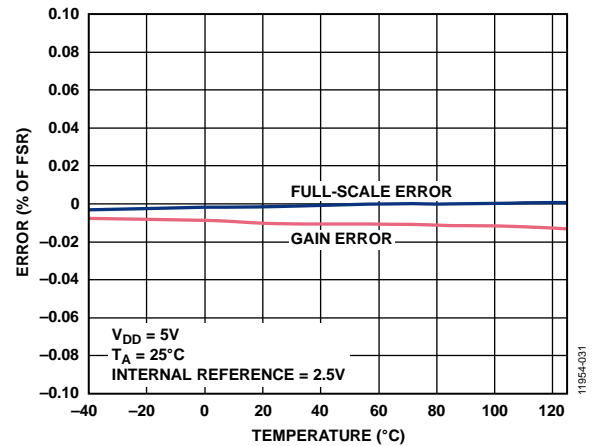


Figure 25. AD5676R Gain Error and Full-Scale Error vs. Temperature



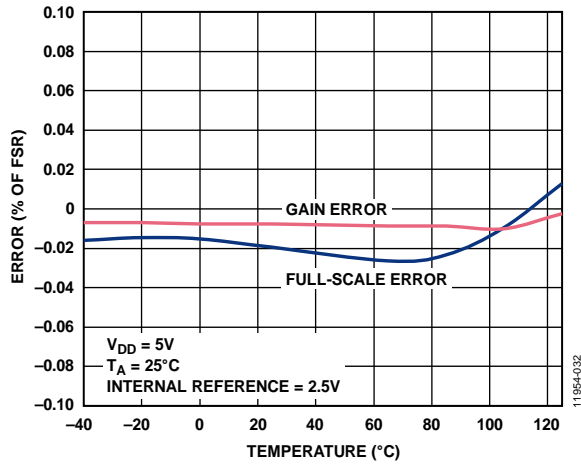


Figure 26. AD5672R Gain Error and Full-Scale Error vs. Temperature

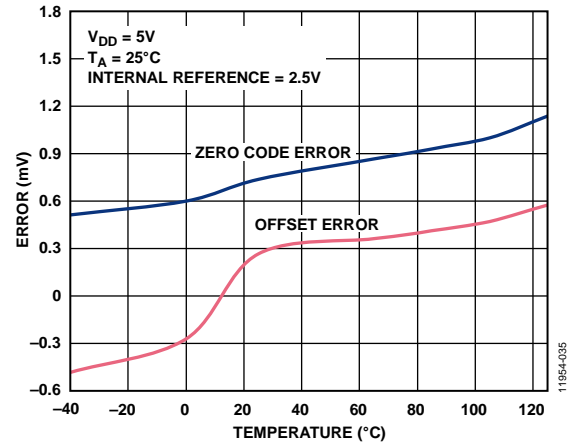


Figure 29. AD5676R Zero Code Error and Offset Error vs. Temperature

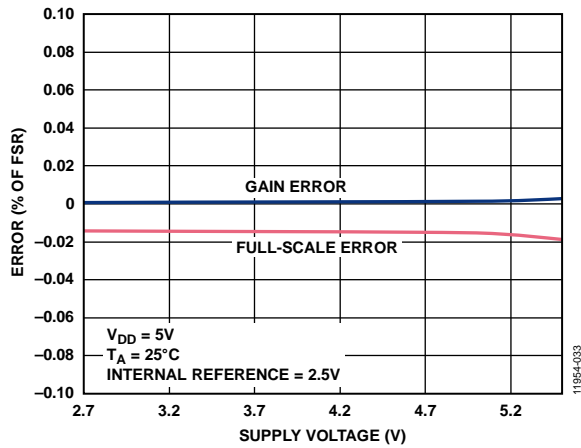


Figure 27. AD5676R Gain Error and Full-Scale Error vs. Supply Voltage

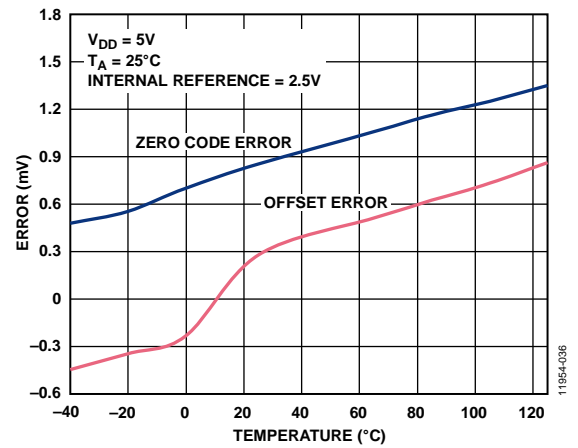


Figure 30. AD5672R Zero Code Error and Offset Error vs. Temperature

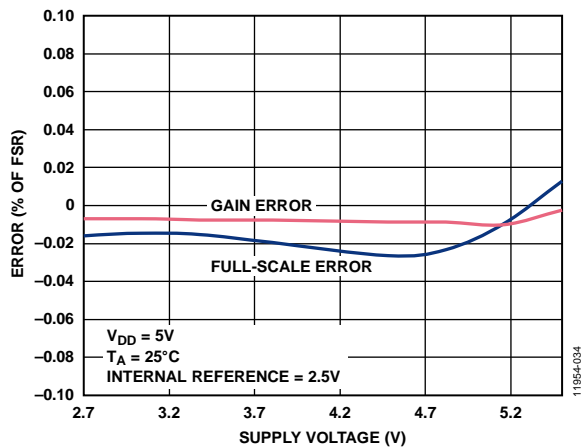


Figure 28. AD5672R Gain Error and Full-Scale Error vs. Supply Voltage

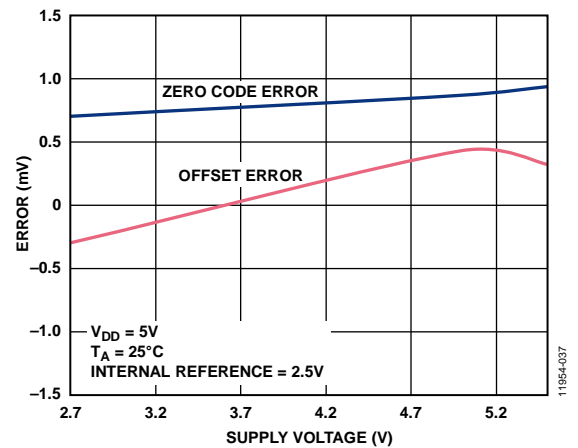


Figure 31. AD5676R Zero Code Error and Offset Error vs. Supply Voltage

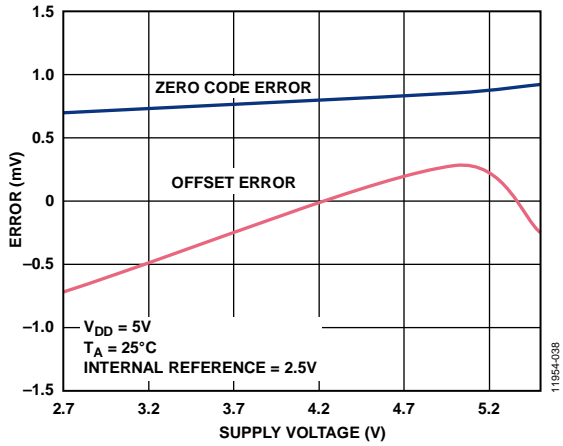


Figure 32. AD5672R Zero Code Error and Offset Error vs. Supply Voltage

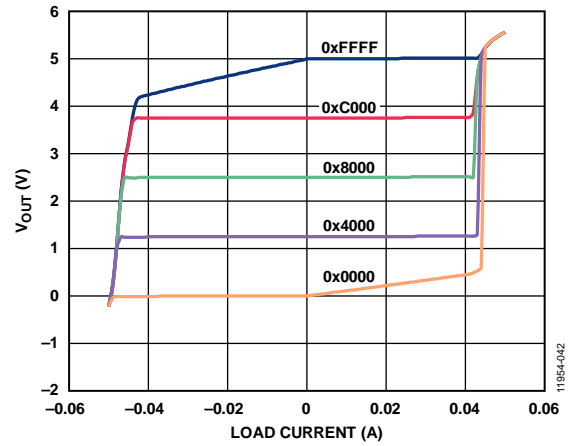


Figure 35. Source and Sink Capability at 5 V

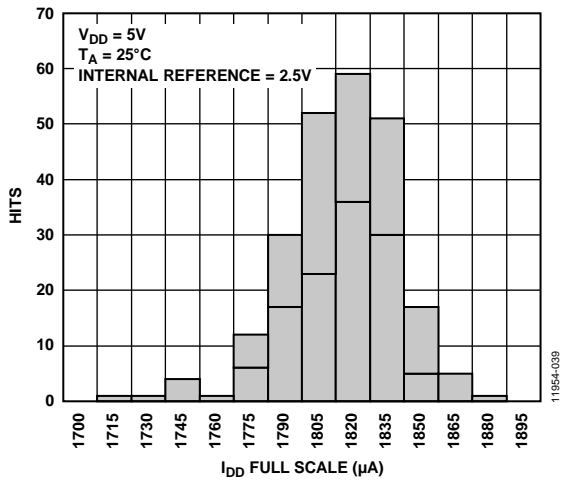


Figure 33. Supply Current ( $I_{DD}$ ) Histogram with Internal Reference

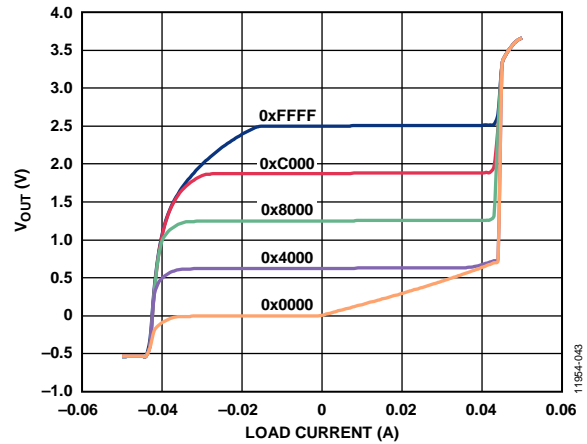


Figure 36. Source and Sink Capability at 3 V

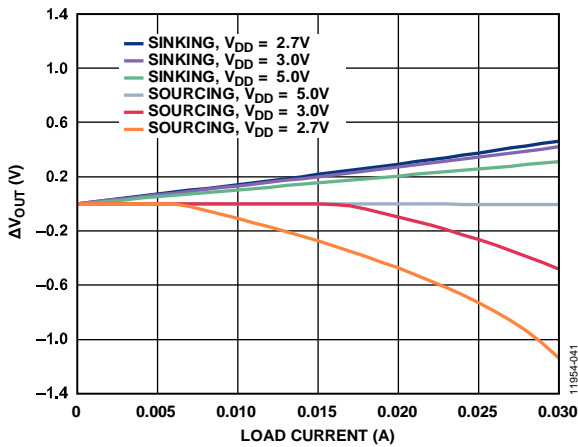


Figure 34. Headroom/Footroom ( $\Delta V_{OUT}$ ) vs. Load Current

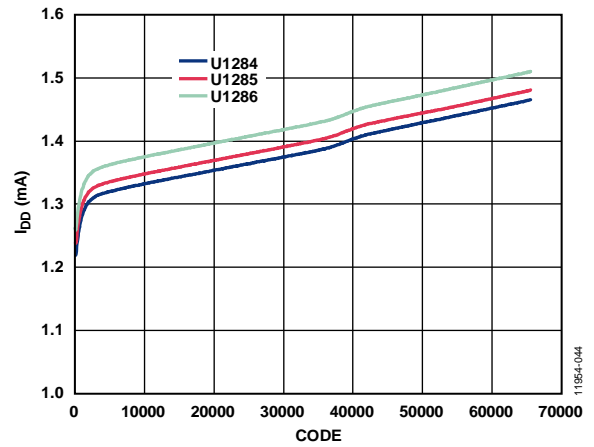


Figure 37.  $I_{DD}$  vs. Code

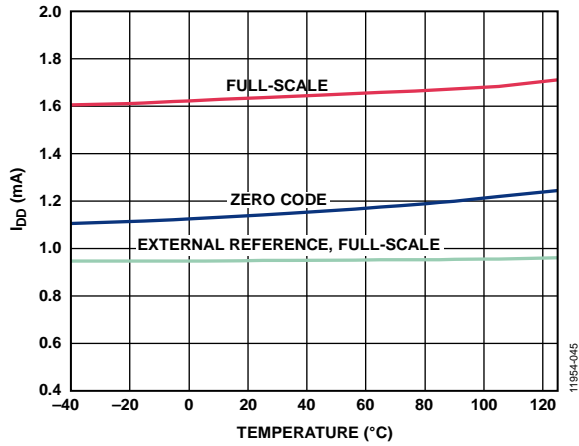


Figure 38.  $I_{DD}$  vs. Temperature

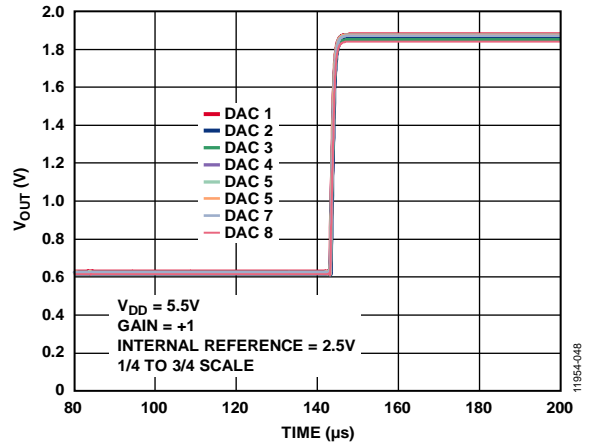


Figure 41. Full-Scale Settling Time

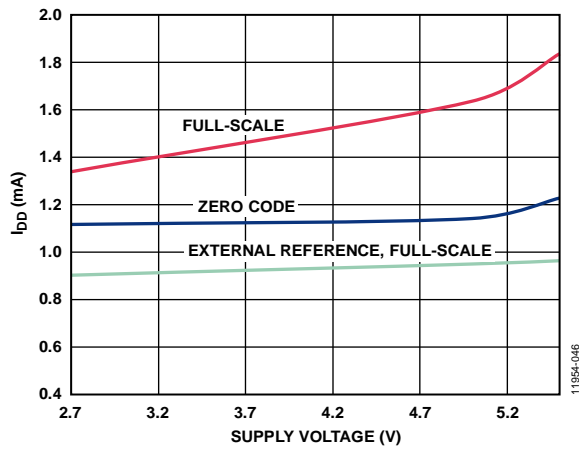


Figure 39.  $I_{DD}$  vs. Supply Voltage

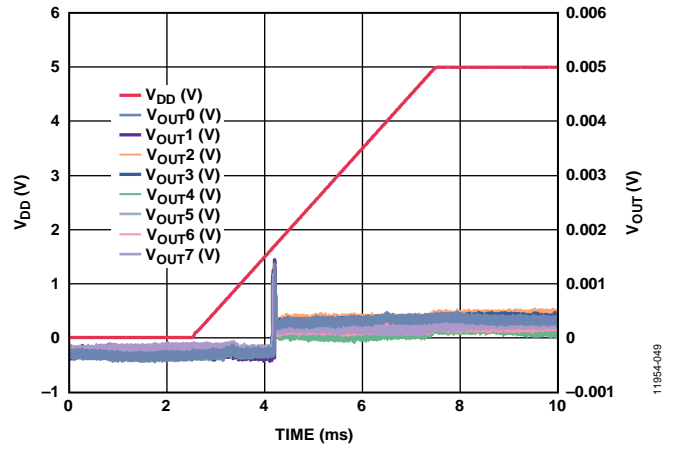


Figure 42. Power-On Reset to 0 V and Midscale

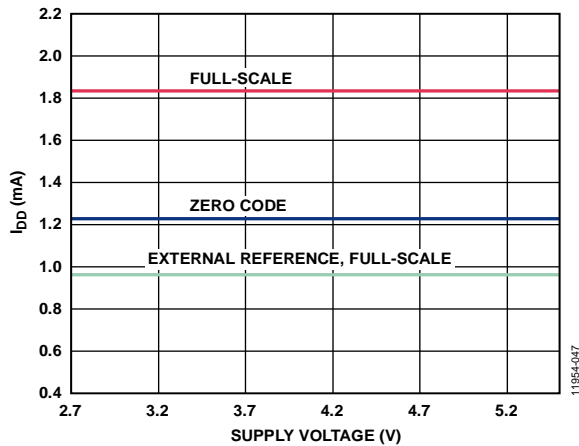


Figure 40.  $I_{DD}$  vs. Zero Code and Full-Scale

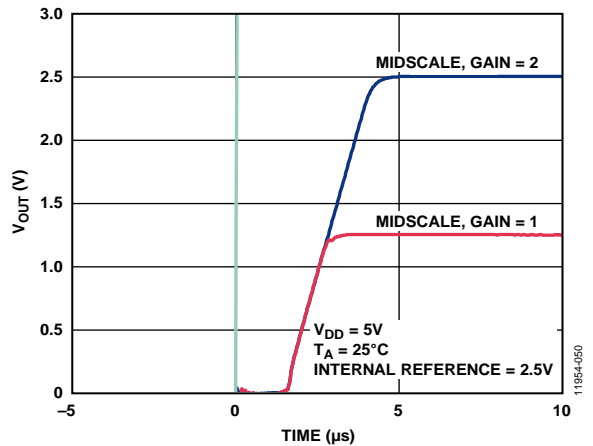


Figure 43. Exiting Power-Down to Midscale

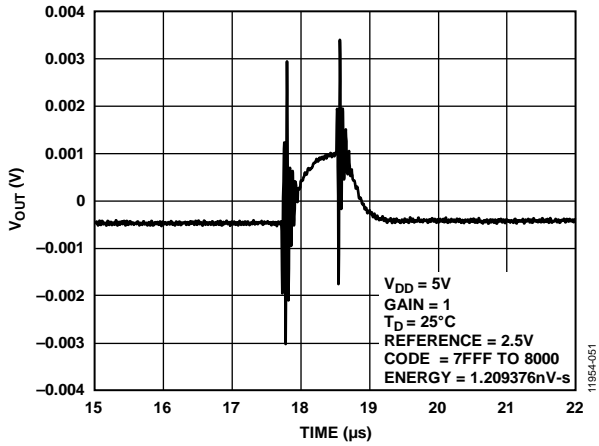


Figure 44. Digital-to-Analog Glitch Impulse

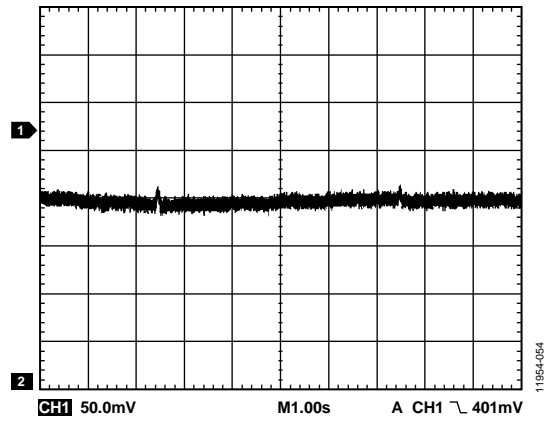


Figure 47. 0.1 Hz to 10 Hz Output Noise

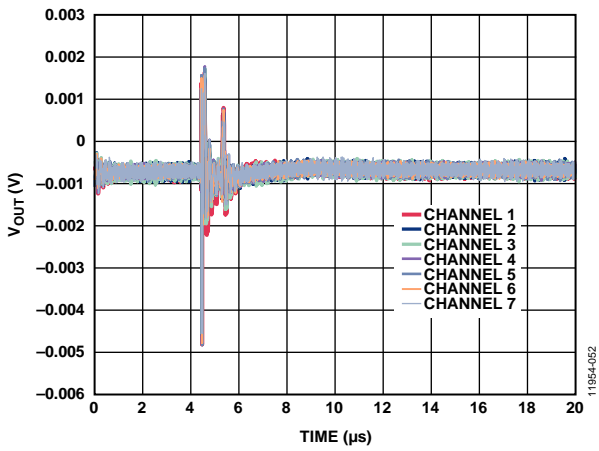


Figure 45. Analog Crosstalk

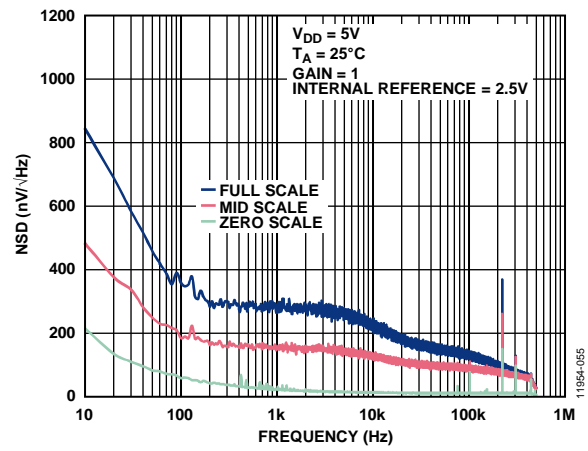


Figure 48. Noise Spectral Density (NSD)

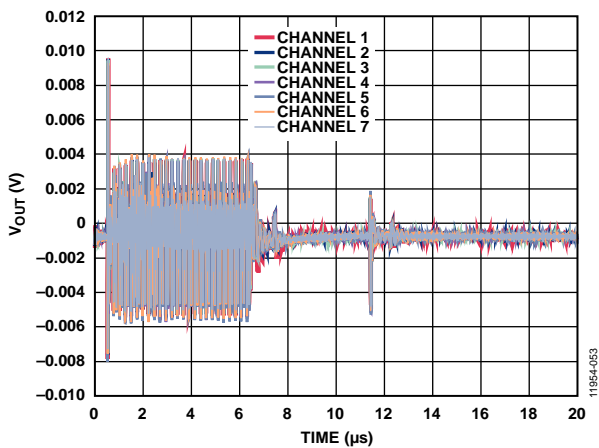


Figure 46. DAC-to-DAC Crosstalk

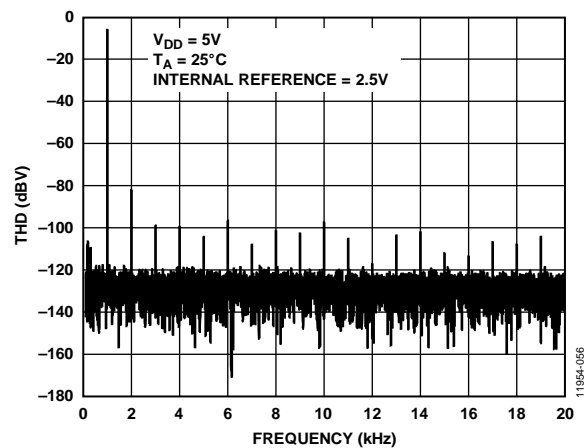


Figure 49. Total Harmonic Distortion (THD) at 1 kHz

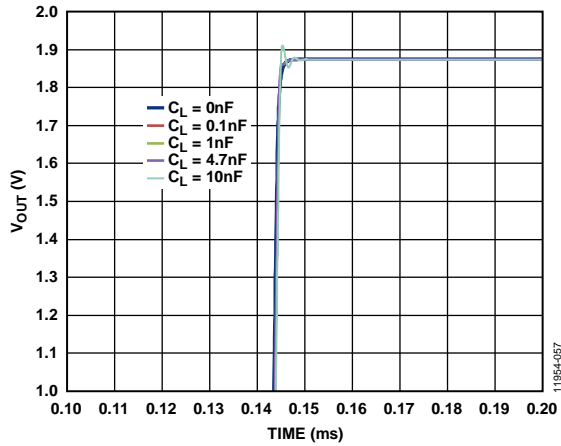


Figure 50. Settling Time at Various Capacitive Loads

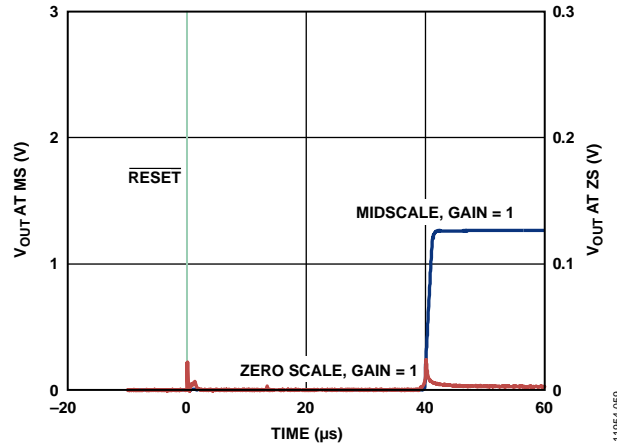


Figure 52. Hardware Reset

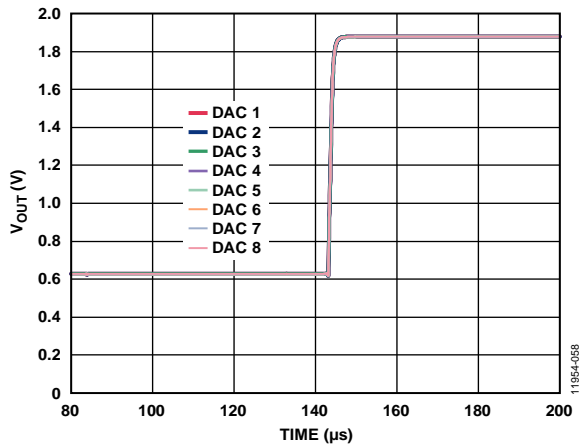


Figure 51. Settling Time, 5.5 V

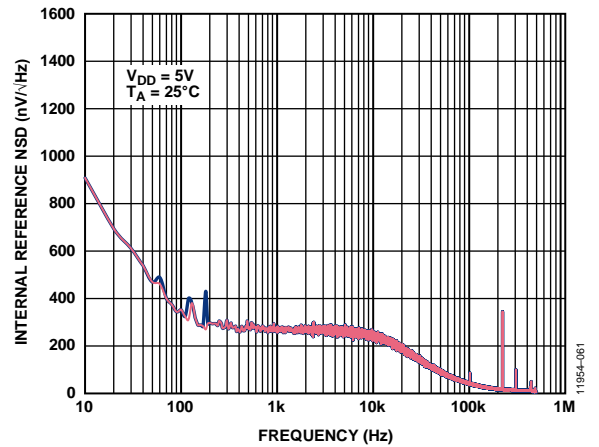


Figure 53. Internal Reference NSD vs. Frequency

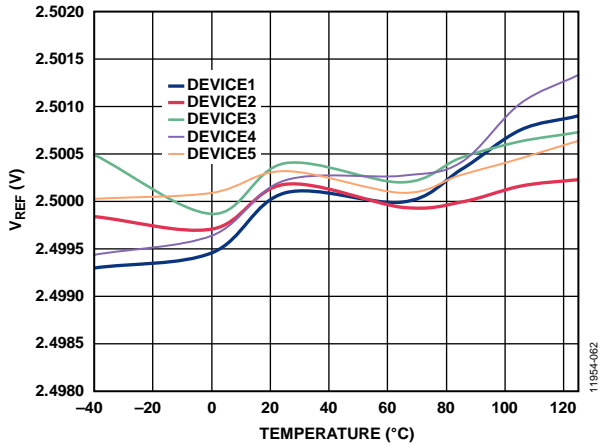


Figure 54. Internal Reference Voltage ( $V_{REF}$ ) vs. Temperature (A Grade)

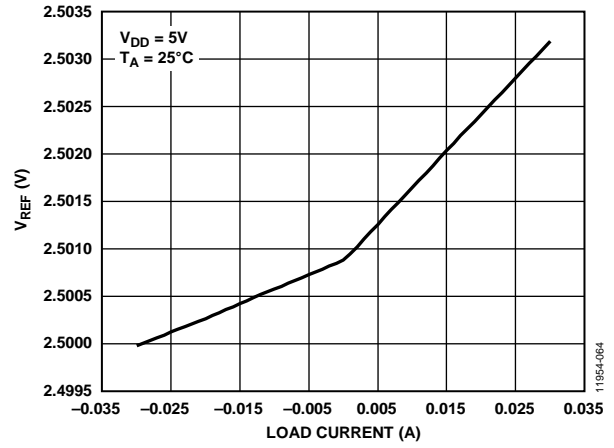


Figure 56. Internal Reference Voltage ( $V_{REF}$ ) vs. Load Current and Supply Voltage ( $V_{DD}$ )

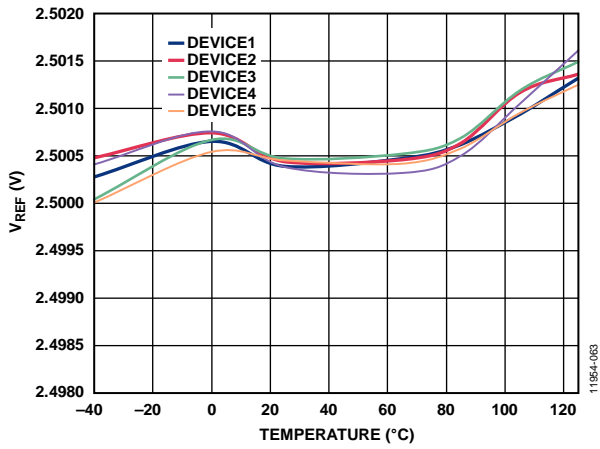


Figure 55. Internal Reference Voltage ( $V_{REF}$ ) vs. Temperature (B Grade)

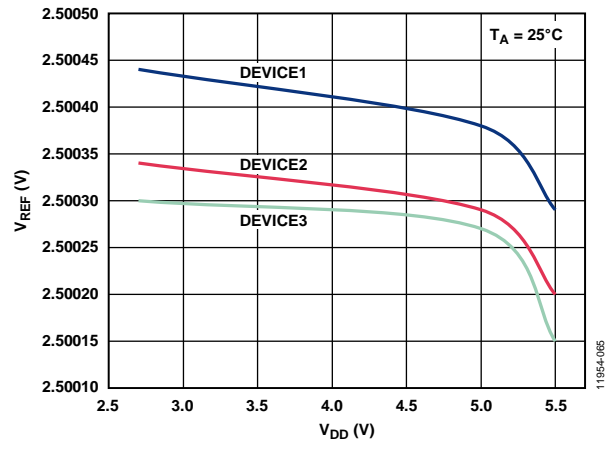


Figure 57. Internal Reference Voltage ( $V_{REF}$ ) vs. Supply Voltage ( $V_{DD}$ )

## TERMINOLOGY

### Relative Accuracy or Integral Nonlinearity (INL)

For the DAC, relative accuracy or integral nonlinearity is a measurement of the maximum deviation, in LSBs, from a straight line passing through the endpoints of the DAC transfer function.

### Differential Nonlinearity (DNL)

Differential nonlinearity is the difference between the measured change and the ideal 1 LSB change between any two adjacent codes. A specified differential nonlinearity of  $\pm 1$  LSB maximum ensures monotonicity. These DACs are guaranteed monotonic by design.

### Zero Code Error

Zero code error is a measurement of the output error when zero code (0x0000) is loaded to the DAC register. The ideal output is 0 V. The zero code error is always positive because the output of the DAC cannot go below 0 V due to a combination of the offset errors in the DAC and the output amplifier. Zero code error is expressed in mV.

### Full-Scale Error

Full-scale error is a measurement of the output error when full-scale code (0xFFFF) is loaded to the DAC register. The ideal output is  $V_{DD} - 1$  LSB. Full-scale error is expressed in percent of full-scale range (% of FSR).

### Gain Error

Gain error is a measure of the span error of the DAC. It is the deviation in slope of the DAC transfer characteristic from the ideal expressed as % of FSR.

### Offset Error Drift

Offset error drift is a measurement of the change in offset error with a change in temperature. It is expressed in  $\mu\text{V}/^\circ\text{C}$ .

### Offset Error

Offset error is a measure of the difference between  $V_{OUT}$  (actual) and  $V_{OUT}$  (ideal) expressed in mV in the linear region of the transfer function. Offset error is measured with Code 256 loaded in the DAC register. It can be negative or positive.

### DC Power Supply Rejection Ratio (PSRR)

The dc power supply rejection ratio indicates how the output of the DAC is affected by changes in the supply voltage. PSRR is the ratio of the change in  $V_{OUT}$  to a change in  $V_{DD}$  for full-scale output of the DAC. It is measured in mV/V.  $V_{REF}$  is held at 2 V, and  $V_{DD}$  is varied by  $\pm 10\%$ .

### Output Voltage Settling Time

The output voltage settling time is the amount of time it takes for the output of a DAC to settle to a specified level for a  $\frac{1}{4}$  to  $\frac{3}{4}$  full-scale input change and is measured from the rising edge of SYNC.

### Digital-to-Analog Glitch Impulse

Digital-to-analog glitch impulse is the impulse injected into the analog output when the input code in the DAC register changes state. It is normally specified as the area of the glitch in nV-sec, and is measured when the digital input code is changed by 1 LSB at the major carry transition (0x7FFF to 0x8000).

### Digital Feedthrough

Digital feedthrough is a measure of the impulse injected into the analog output of the DAC from the digital inputs of the DAC, but is measured when the DAC output is not updated. It is specified in nV-sec, and measured with a full-scale code change on the data bus, that is, from all 0s to all 1s and vice versa.

### Reference Feedthrough

Reference feedthrough is the ratio of the amplitude of the signal at the DAC output to the reference input when the DAC output is not being updated. It is expressed in dB.

### Noise Spectral Density

Noise spectral density is a measurement of the internally generated random noise. Random noise is characterized as a spectral density ( $\text{nV}/\sqrt{\text{Hz}}$ ). It is measured by loading the DAC to midscale and measuring noise at the output. It is measured in  $\text{nV}/\sqrt{\text{Hz}}$ .

### DC Crosstalk

DC crosstalk is the dc change in the output level of one DAC in response to a change in the output of another DAC. It is measured with a full-scale output change on one DAC (or soft power-down and power-up) while monitoring another DAC kept at midscale. It is expressed in  $\mu\text{V}$ .

DC crosstalk due to load current change is a measure of the impact that a change in load current on one DAC has on another DAC kept at midscale. It is expressed in  $\mu\text{V}/\text{mA}$ .

### Digital Crosstalk

Digital crosstalk is the glitch impulse transferred to the output of one DAC at midscale in response to a full-scale code change (all 0s to all 1s and vice versa) in the input register of another DAC. It is measured in standalone mode and is expressed in nV-sec.

**Analog Crosstalk**

Analog crosstalk is the glitch impulse transferred to the output of one DAC due to a change in the output of another DAC. It is measured by first loading one of the input registers with a full-scale code change (all 0s to all 1s and vice versa). Then, execute a software LDAC and monitor the output of the DAC whose digital code was not changed. The area of the glitch is expressed in nV-sec.

**DAC-to-DAC Crosstalk**

DAC-to-DAC crosstalk is the glitch impulse transferred to the output of one DAC due to a digital code change and subsequent analog output change of another DAC. It is measured by loading the attack channel with a full-scale code change (all 0s to all 1s and vice versa), using the write to and update commands while monitoring the output of the victim channel that is at midscale. The energy of the glitch is expressed in nV-sec.

**Multiplying Bandwidth**

The multiplying bandwidth is a measure of the finite bandwidth of the amplifiers within the DAC. A sine wave on the reference (with full-scale code loaded to the DAC) appears on the output. The multiplying bandwidth is the frequency at which the output amplitude falls to 3 dB below the input.

**Total Harmonic Distortion (THD)**

THD is the difference between an ideal sine wave and its attenuated version using the DAC. The sine wave is used as the reference for the DAC, and the THD is a measurement of the harmonics present on the DAC output. It is measured in dB.

**Voltage Reference Temperature Coefficient (TC)**

Voltage reference TC is a measure of the change in the reference output voltage with a change in temperature. The reference TC is calculated using the box method, which defines the TC as the maximum change in the reference output over a given temperature range expressed in ppm/°C, as follows:

$$TC = \left[ \frac{V_{REF(MAX)} - V_{REF(MIN)}}{V_{REF(NOM)} \times Temp\ Range} \right] \times 10^6$$

where:

$V_{REF(MAX)}$  is the maximum reference output measured over the total temperature range.

$V_{REF(MIN)}$  is the minimum reference output measured over the total temperature range.

$V_{REF(NOM)}$  is the nominal reference output voltage, 2.5 V.

$Temp\ Range$  is the specified temperature range of -40°C to +125°C.



## THEORY OF OPERATION

### DIGITAL-TO-ANALOG CONVERTER

The AD5672R/AD5676R are octal, 12-/16-bit, serial input, voltage output DACs with an internal reference. The devices operate from supply voltages of 2.7 V to 5.5 V. Data is written to the AD5672R/AD5676R in a 24-bit word format via a 3-wire serial interface. The AD5672R/AD5676R incorporate a power-on reset circuit to ensure that the DAC output powers up to a known output state. The devices also have a software power-down mode that reduces the typical current consumption to 1  $\mu$ A.

### TRANSFER FUNCTION

The internal reference is on by default.

The gain of the output amplifier can be set to  $\times 1$  or  $\times 2$  using the gain select pin (GAIN) on the TSSOP or the gain bit on the LFCSP. When the GAIN pin is tied to GND, all eight DAC outputs have a span from 0 V to  $V_{REF}$ . When the GAIN pin is tied to  $V_{LOGIC}$ , all eight DACs output a span of 0 V to  $2 \times V_{REF}$ . When using the LFCSP, the gain bit in the internal reference and gain setup register is used to set the gain of the output amplifier. The gain bit is 0 by default. When the gain bit is 0, the output span of all eight DACs is 0 V to  $V_{REF}$ . When the gain bit is 1, the output span of all eight DACs is 0 V to  $2 \times V_{REF}$ . The gain bit is ignored on the TSSOP.

### DAC ARCHITECTURE

The AD5672R/AD5676R implement a segmented string DAC architecture with an internal output buffer. Figure 58 shows the internal block diagram.

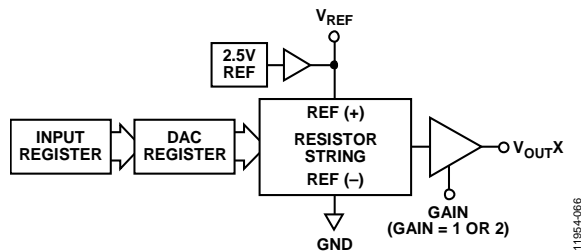


Figure 58. Single DAC Channel Architecture Block Diagram

Figure 59 shows the resistor string structure. The code loaded to the DAC register determines the node on the string where the voltage is tapped off and fed into the output amplifier. The voltage is tapped off by closing one of the switches and connecting the string to the amplifier. Because each resistance in the string has same value, R, the string DAC is guaranteed monotonic.

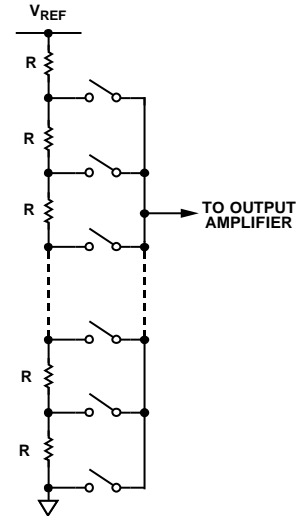


Figure 59. Resistor String Structure

### Internal Reference

The AD5672R/AD5676R on-chip reference is enabled at power-up, but can be disabled via a write to the control register. See the Internal Reference Setup section for details.

The AD5672R/AD5676R have a 2.5 V, 2 ppm/ $^{\circ}$ C reference, giving a full-scale output of 2.5 V or 5 V, depending on the state of the GAIN pin or gain bit. The internal reference associated with the device is available at the  $V_{REFOUT}$  pin. This buffered reference is capable of driving external loads of up to 15 mA.

### Output Amplifiers

The output buffer amplifier generates rail-to-rail voltages on its output. The actual range depends on the value of  $V_{REF}$ , the gain setting, the offset error, and the gain error.

The output amplifiers can drive a load of 1 k $\Omega$  in parallel with 10 nF to GND. The slew rate is 0.8 V/ $\mu$ s with a typical  $\frac{1}{4}$  to  $\frac{3}{4}$  scale settling time of 5  $\mu$ s.

**SERIAL INTERFACE**

The AD5672R/AD5676R use a 3-wire serial interface ( $\overline{\text{SYNC}}$ , SCLK, and SDI) that is compatible with SPI, QSPI™, and MICROWIRE interface standards, as well as most DSPs. See Figure 2 for a timing diagram of a typical write sequence. The AD5672R/AD5676R contain an SDO pin to allow the user to daisy-chain multiple devices together (see the Daisy-Chain Operation section) or for readback.

**Input Shift Register**

The input shift register of the AD5672R/AD5676R is 24 bits wide. Data is loaded MSB first (DB23), and the first four bits are the command bits, C3 to C0 (see Table 10), followed by the 4-bit DAC address bits, A3 to A0 (see Table 11), and finally, the 16-bit data-word.

The data-word comprises 12-bit or 16-bit input code, followed by zero or four don't care bits for the AD5676R and AD5672R, respectively (see Figure 60 and Figure 61). These data bits are transferred to the input register on the 24 falling edges of SCLK and are updated on the rising edge of  $\overline{\text{SYNC}}$ .

Commands execute on individual DAC channels, combined DAC channels, or on all DACs, depending on the address bits selected.

**Table 10. Command Definitions**

| Command |     |     |     | Description  |
|---------|-----|-----|-----|--|
| C3      | C2  | C1  | C0  |  |
| 0       | 0   | 0   | 0   | No operation   |
| 0       | 0   | 0   | 1   | Write to Input Register n where n = 1 to 8, depending on the DAC selected from the address bits in Table 11 (dependent on $\overline{\text{LDAC}}$ ) |
| 0       | 0   | 1   | 0   | Update DAC Register n with contents of Input Register n  |
| 0       | 0   | 1   | 1   | Write to and update DAC Channel n  |
| 0       | 1   | 0   | 0   | Power down/power up the DAC  |
| 0       | 1   | 0   | 1   | Hardware $\overline{\text{LDAC}}$ mask register  |
| 0       | 1   | 1   | 0   | Software reset (power-on reset)  |
| 0       | 1   | 1   | 1   | Internal reference and gain setup register   |
| 1       | 0   | 0   | 0   | Set up the DCEN register (daisy-chain enable)  |
| 1       | 0   | 0   | 1   | Set up the readback register (readback enable)   |
| 1       | 0   | 1   | 0   | Update all channels of the input register simultaneously with the input data   |
| 1       | 0   | 1   | 1   | Update all channels of the DAC register and input register simultaneously with the input data  |
| 1       | 1   | 0   | 0   | Reserved   |
| ...     | ... | ... | ... |  |
| 1       | 1   | 1   | 1   | No operation, daisy-chain mode   |

**Table 11. Address Commands**

| Channel Address[3:0] |    |    |    | Selected Channel |
|----------------------|----|----|----|------------------|
| A3                   | A2 | A1 | A0 |                  |
| 0                    | 0  | 0  | 0  | DAC 0            |
| 0                    | 0  | 0  | 1  | DAC 1            |
| 0                    | 0  | 1  | 0  | DAC 2            |
| 0                    | 0  | 1  | 1  | DAC 3            |
| 0                    | 1  | 0  | 0  | DAC 4            |
| 0                    | 1  | 0  | 1  | DAC 5            |
| 0                    | 1  | 1  | 0  | DAC 6            |
| 0                    | 1  | 1  | 1  | DAC 7            |

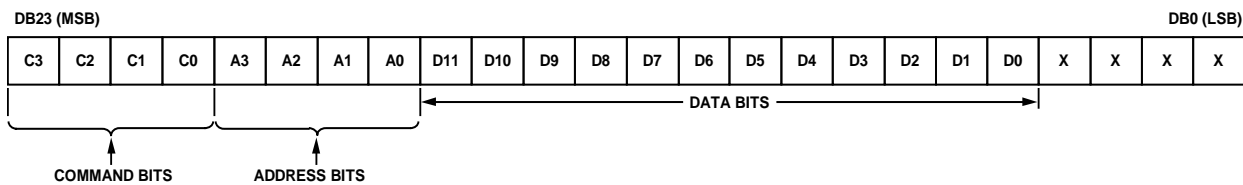


Figure 60. AD5672R Input Shift Register Content

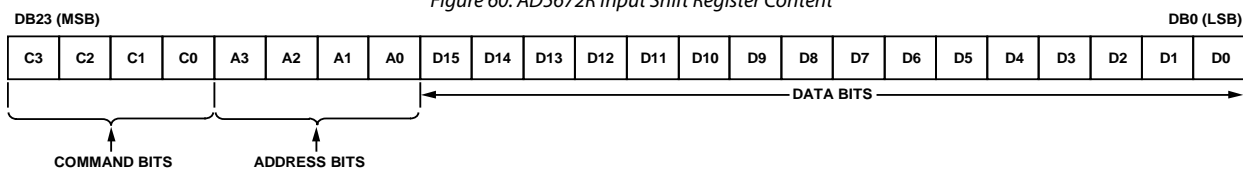


Figure 61. AD5676R Input Shift Register Content

**STANDALONE OPERATION**

Bring the SYNC line low to begin the write sequence. Data from the SDI line is clocked into the 24-bit input shift register on the falling edge of SCLK. After the last of 24 data bits is clocked in, bring SYNC high. The programmed function is then executed, that is, an LDAC-dependent change in DAC register contents and/or a change in the mode of operation. If SYNC is taken high at a clock before the 24<sup>th</sup> clock, it is considered a valid frame, and invalid data is loaded to the DAC. Bring SYNC high for a minimum of 20 ns (single channel, see t<sub>s</sub> in Figure 2) before the next write sequence so that a falling edge of SYNC can initiate the next write sequence. Idle SYNC at rails between write sequences for even lower power operation. The SYNC line is kept low for 24 falling edges of SCLK, and the DAC is updated on the rising edge of SYNC.

When data is transferred into the input register of the addressed DAC, all DAC registers and outputs update by taking LDAC low while the SYNC line is high.

**WRITE AND UPDATE COMMANDS**

**Write to Input Register n (Dependent on LDAC)**

Command 0001 allows the user to write the dedicated input register of each DAC individually. When LDAC is low, the input register is transparent, if not controlled by the LDAC mask register.

**Update DAC Register n with Contents of Input Register n**

Command 0010 loads the DAC registers and outputs with the contents of the input registers selected and updates the DAC outputs directly. Data Bit D7 to Bit D0 determine which DACs have data from the input register transferred to the DAC register. Setting a bit to 1 transfers data from the input register to the appropriate DAC register.

**Write to and Update DAC Channel n (Independent of LDAC)**

Command 0011 allows the user to write to the DAC registers and updates the DAC outputs directly. The address bits are used to select the DAC channel.

**DAISY-CHAIN OPERATION**

For systems that contain several DACs, the SDO pin can daisy-chain several devices together and is enabled through a software executable daisy-chain enable (DCEN) command. Command 1000 is reserved for this DCEN function (see Table 10). The daisy-chain mode is enabled by setting Bit DB0 in the DCEN register. The default setting is standalone mode, where DB0 = 0. Table 12 shows how the state of the bit corresponds to the mode of operation of the device.

**Table 12. Daisy-Chain Enable (DCEN) Register**

| DB0 | Description               |
|-----|---------------------------|
| 0   | Standalone mode (default) |
| 1   | DCEN mode                 |

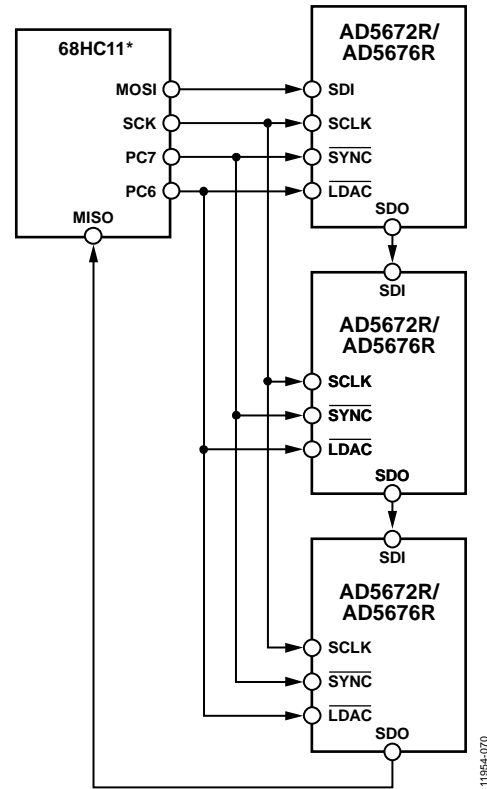


Figure 62. Daisy-Chaining the AD5672R/AD5676R

The SCLK pin is continuously applied to the input shift register when SYNC is low. If more than 24 clock pulses are applied, the data ripples out of the input shift register and appears on the SDO line. This data is clocked out on the rising edge of SCLK and is valid on the falling edge. By connecting this line to the SDI input on the next DAC in the chain, a daisy-chain interface is constructed. Each DAC in the system requires 24 clock pulses. Therefore, the total number of clock cycles must equal 24 × N, where N is the total number of devices updated. If SYNC is taken high at a clock that is not a multiple of 24, it is considered a valid frame, and invalid data may be loaded to the DAC. When the serial transfer to all devices is complete, SYNC goes high, which latches the input data in each device in the daisy chain and prevents any further data from being clocked into the input shift register. The serial clock can be continuous or a gated clock. If SYNC is held low for the correct number of clock cycles, a continuous SCLK source is used. In gated clock mode, use a burst clock containing the exact number of clock cycles, and take SYNC high after the final clock to latch the data.

**READBACK OPERATION**

Readback mode is invoked through a software executable readback command. If the SDO output is disabled via the daisy-chain mode disable bit in the control register, it is automatically enabled for the duration of the read operation, after which it is disabled again. Command 1001 is reserved for the readback function. This command, in association with the address bits A3 to A0, selects the DAC input register to read (see Table 10 and Table 11). Note that, during readback, only one input register can be selected. The remaining data bits in the write sequence are don't care bits. During the next SPI write, the data appearing on the SDO output contains the data from the previously addressed register.

For example, to read back the DAC register for Channel 0, implement the following sequence:

1. Write 0x900000 to the AD5672R/AD5676R input register. This configures the device for read mode with the DAC register of Channel 0 selected. Note that all data bits, DB15 to DB0, are don't care bits.
2. Follow this with a second write, a no operation (NOP) condition, 0x000000 or 0xF00000 when in daisy-chain mode. During this write, the data from the register is clocked out on the SDO line. DB23 to DB20 contain undefined data, and the last 16 bits contain the DB19 to DB4 DAC register contents.

When SYNC is high, the SDO pin is driven by a weak latch, which holds the last data bit. The SDO pin can be overdriven by the SDO pin of another device, thus allowing multiple devices to be read using the same SPI interface.

**POWER-DOWN OPERATION**

The AD5672R/AD5676R contain two separate power-down modes. Command 0100 is designated for the power-down function (see Table 10). These power-down modes are software programmable by setting 16 bits, Bit DB15 to Bit DB0, in the input shift register. There are two bits associated with each DAC channel. Table 13 shows how the state of the two bits corresponds to the mode of operation of the device.

Any or all DACs (DAC A to DAC D) power down to the selected mode by setting the corresponding bits. See Table 14 for the contents of the input shift register during the power-down/power-up operation.

**Table 14. 24-Bit Input Shift Register Contents of Power-Down/Power-Up Operation**

| [DB23:DB20] | DB19 | [DB18:DB16]      | DAC 7<br>[DB15: B14] | DAC 6<br>[DB13: B12] | DAC 5<br>[DB11: B10] | DAC 4<br>[DB9:DB8] | DAC 3<br>[DB7:DB6] | DAC 2<br>[DB5:DB4] | DAC 1<br>[DB3:DB2] | DAC 0<br>[DB1:DB0] |
|-------------|------|------------------|----------------------|----------------------|----------------------|--------------------|--------------------|--------------------|--------------------|--------------------|
| 0100        | 0    | XXX <sup>1</sup> | [PD1:PD0]            | [PD1:PD0]            | [PD1:PD0]            | [PD1:PD0]          | [PD1:PD0]          | [PD1:PD0]          | [PD1:PD0]          | [PD1:PD0]          |

<sup>1</sup> X means don't care

**Table 13. Modes of Operation**

| Operating Mode   | PD1 | PD0 |
|------------------|-----|-----|
| Normal Operation | 0   | 0   |
| Power-Down Modes |     |     |
| 1 kΩ to GND      | 0   | 1   |
| Tristate         | 1   | 1   |

When both Bit PD1 and Bit PD0 in the input shift register are set to 0, the device works normally with a typical power consumption of 1 mA at 5 V. However, for the two power-down modes, the supply current typically falls to 1 μA. In addition to this fall, the output stage switches internally from the amplifier output to a resistor network of known values. Therefore the DAC channel output impedance is defined when the channel is powered down. There are two different power-down options. The output is either connected internally to GND through a 1 kΩ resistor or it is left open circuited (tristate). Figure 63 shows the output stage.

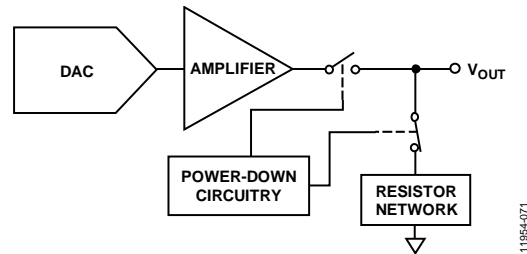


Figure 63. Output Stage During Power-Down

The bias generator, output amplifier, resistor string, and other associated linear circuitry shut down when power-down mode is activated. However, the contents of the DAC register are unaffected when in power-down. The DAC register updates while the device is in power-down mode. The time required to exit power-down is typically 2.5 μs for V<sub>DD</sub> = 5 V.

To reduce the current consumption further, power off the on-chip reference. See the Internal Reference Setup section.

**LOAD DAC (HARDWARE  $\overline{\text{LDAC}}$  PIN)**

The AD5672R/AD5676R DACs have double buffered interfaces consisting of two banks of registers: input registers and DAC registers. The user can write to any combination of the input registers. Updates to the DAC register are controlled by the  $\overline{\text{LDAC}}$  pin.

**Instantaneous DAC Updating ( $\overline{\text{LDAC}}$  Held Low)**

$\overline{\text{LDAC}}$  is held low while data is clocked into the input register using Command 0001. Both the addressed input register and the DAC register are updated on the rising edge of  $\overline{\text{SYNC}}$  and the output begins to change (see Table 16).

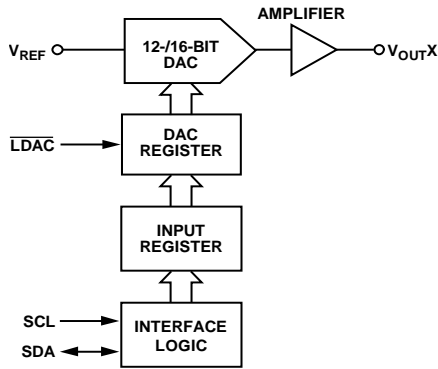


Figure 64. Simplified Diagram of Input Loading Circuitry for a Single DAC

**Deferred DAC Updating ( $\overline{\text{LDAC}}$  is Pulsed Low)**

$\overline{\text{LDAC}}$  is held high while data is clocked into the input register using Command 0001. All DAC outputs are asynchronously updated by taking  $\overline{\text{LDAC}}$  low after  $\overline{\text{SYNC}}$  is taken high. The update now occurs on the falling edge of  $\overline{\text{LDAC}}$ .

**$\overline{\text{LDAC}}$  MASK REGISTER**

Command 0101 is reserved for this software  $\overline{\text{LDAC}}$  function. Address bits are ignored. Writing to the DAC, using Command 0101, loads the 8-bit  $\overline{\text{LDAC}}$  register (DB7 to DB0). The default for each channel is 0; that is, the  $\overline{\text{LDAC}}$  pin works normally. Setting the bits to 1 forces this DAC channel to ignore transitions on the  $\overline{\text{LDAC}}$  pin, regardless of the state of the hardware  $\overline{\text{LDAC}}$  pin. This flexibility is useful in applications where the user wishes to select which channels respond to the  $\overline{\text{LDAC}}$  pin.

The  $\overline{\text{LDAC}}$  register gives the user extra flexibility and control over the hardware  $\overline{\text{LDAC}}$  pin (see Table 15). Setting the  $\overline{\text{LDAC}}$  bits (DB0 to DB7) to 0 for a DAC channel means that this channel update is controlled by the hardware  $\overline{\text{LDAC}}$  pin.

Table 15.  $\overline{\text{LDAC}}$  Overwrite Definition

| Load $\overline{\text{LDAC}}$ Register     |                              | $\overline{\text{LDAC}}$ Operation   |
|--|------------------------------|--|
| $\overline{\text{LDAC}}$ Bits (DB7 to DB0) | $\overline{\text{LDAC}}$ Pin |  |
| 00000000                                   | 1 or 0                       | Determined by the $\overline{\text{LDAC}}$ pin.  |
| 11111111                                   | X <sup>1</sup>               | DAC channels update and override the $\overline{\text{LDAC}}$ pin. DAC channels see $\overline{\text{LDAC}}$ as 1. |

<sup>1</sup> X means don't care.

Table 16. Write Commands and  $\overline{\text{LDAC}}$  Pin Truth Table<sup>1</sup>

| Command | Description  | Hardware $\overline{\text{LDAC}}$ Pin State | Input Register Contents    | DAC Register Contents  |
|---------|--|---|----------------------------|--|
| 0001    | Write to Input Register n (dependent on $\overline{\text{LDAC}}$ ) | $V_{\text{LOGIC}}$<br>GND <sup>2</sup>      | Data update<br>Data update | No change (no update)<br>Data update   |
| 0010    | Update DAC Register n with contents of Input Register n            | $V_{\text{LOGIC}}$<br>GND                   | No change<br>No change     | Updated with input register contents<br>Updated with input register contents |
| 0011    | Write to and update DAC Channel n                                  | $V_{\text{LOGIC}}$<br>GND                   | Data update<br>Data update | Data update<br>Data update   |

<sup>1</sup> A high to low hardware  $\overline{\text{LDAC}}$  pin transition always updates the contents of the contents of the DAC register with the contents of the input register on channels that are not masked (blocked) by the  $\overline{\text{LDAC}}$  mask register.

<sup>2</sup> When  $\overline{\text{LDAC}}$  is permanently tied low, the  $\overline{\text{LDAC}}$  mask bits are ignored.

**HARDWARE RESET (RESET)**

The  $\overline{\text{RESET}}$  pin is an active low reset that allows the outputs to be cleared to either zero scale or midscale. The clear code value is user selectable via the  $\overline{\text{RESET}}$  select pin. It is necessary to keep the  $\overline{\text{RESET}}$  pin low for a minimum time (see Table 5) to complete the operation. When the  $\overline{\text{RESET}}$  signal is returned high, the output remains at the cleared value until a new value is programmed. While the  $\overline{\text{RESET}}$  pin is low, the outputs cannot be updated with a new value. Any events on the  $\overline{\text{LDAC}}$  or  $\overline{\text{RESET}}$  pins during power-on reset are ignored. If the  $\overline{\text{RESET}}$  pin is pulled low at power-up, the device does not initialize correctly until the pin is released.

**RESET SELECT PIN (RSTSEL)**

The AD5672R/AD5676R contain a power-on reset circuit that controls the output voltage during power-up. By connecting the RSTSEL pin low, the output powers up to zero scale. Note that this is outside the linear region of the DAC; by connecting the RSTSEL pin high,  $V_{\text{OUTX}}$  power up to midscale. The output remains powered up at this level until a valid write sequence is made to the DAC. The RSTSEL pin is only available on the TSSOP. When the AD5672R/AD5676R LFCSP is used, the outputs power up to 0 V.

**SOFTWARE RESET**

A software executable reset function is also available that resets the DAC to the power-on reset code. Command 0110 is designated for this software reset function. The DAC address bits must be set to 0x0 and the data bits set to 0x1234 for the software reset command to execute.

**AMPLIFIER GAIN SELECTION ON LFCSP**

The output amplifier gain setting for the LFCSP is determined by the state of the DB2 bit in the internal reference and gain setup register (see Table 17 and Table 18).

**INTERNAL REFERENCE SETUP**

The on-chip reference is on at power-up by default. To reduce the supply current, turn off this reference by setting the software programmable bit, DB0, in the control register. Table 17 shows how the state of the bit corresponds to the mode of operation. Command 0111 is reserved for setting up the internal reference and the gain setting on the LFCSP (see Table 10).

**Table 17. Internal Reference and Gain Setup Register**

| Bit | Description   |
|-----|---|
| DB2 | Amplifier gain setting<br>DB2 = 0: amplifier gain = 1 (default)<br>DB2 = 1: amplifier gain = 2            |
| DB0 | Reference enable<br>DB0 = 0: internal reference enabled (default)<br>DB0 = 1: internal reference disabled |

**SOLDER HEAT REFLOW**

As with all IC reference voltage circuits, the reference value experiences a shift induced by the soldering process. Analog Devices, Inc. performs a reliability test called precondition to mimic the effect of soldering a device to a board. The output voltage specification quoted previously includes the effect of this reliability test.

Figure 65 shows the effect of solder heat reflow (SHR) as measured through the reliability test (precondition).

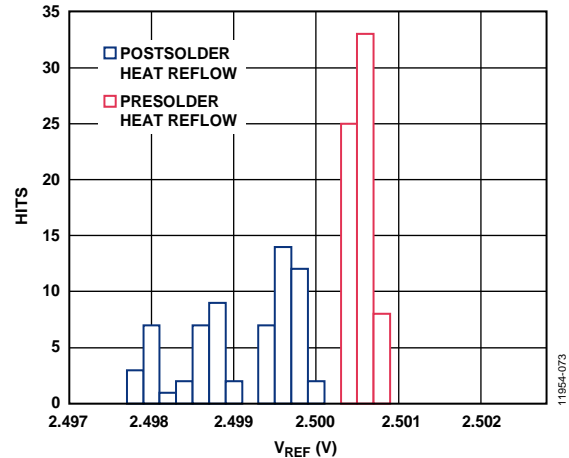


Figure 65. Solder Heat Reflow Reference Voltage Shift

**LONG-TERM TEMPERATURE DRIFT**

Figure 66 shows the change in  $V_{\text{REF}}$  value after 1000 hours in the life test at 150°C.

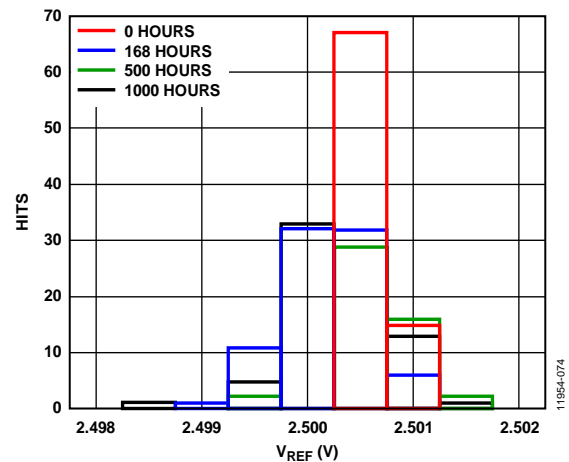


Figure 66. Reference Drift Through to 1000 Hours

Table 18. 24-Bit Input Shift Register Contents for Internal Reference and Gain Setup Command

| DB23 (MSB) | DB22 | DB21 | DB20 | DB19 to DB3 | DB2  | DB1                | DB0 (LSB)        |
|------------|------|------|------|-------------|------|--------------------|------------------|
| 0          | 1    | 1    | 1    | Don't care  | Gain | Reserved. Set to 0 | Reference enable |

**THERMAL HYSTERESIS**

Thermal hysteresis is the voltage difference induced on the reference voltage by sweeping the temperature from ambient to cold, to hot, and then back to ambient.

Figure 67 shows thermal hysteresis data. It is measured by sweeping the temperature from ambient to  $-40^{\circ}\text{C}$ , then to  $+125^{\circ}\text{C}$ , and returning to ambient. The  $V_{\text{REF}}$  delta, shown in blue in Figure 67, is then measured between the two ambient measurements. The same temperature sweep and measurements were immediately repeated and the results are shown in red in Figure 67.

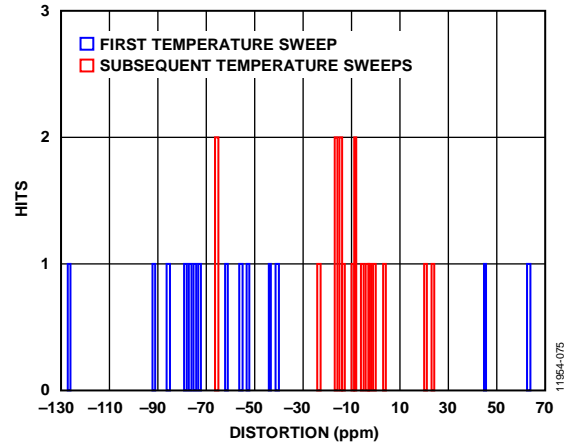


Figure 67. Thermal Hysteresis



## APPLICATIONS INFORMATION

### POWER SUPPLY RECOMMENDATIONS

The following supplies typically power the AD5672R/AD5676R:  $V_{DD} = 3.3\text{ V}$  and  $V_{LOGIC} = 1.8\text{ V}$ .

The ADP7118 can be used to power the  $V_{DD}$  pin. The ADP160 can be used to power the  $V_{LOGIC}$  pin. Figure 68 shows this setup. The ADP7118 can operate from input voltages up to 20 V. The ADP160 can operate from input voltages up to 5.5 V.

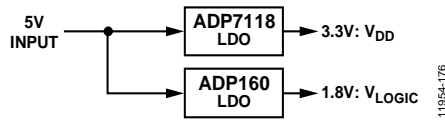


Figure 68. Low Noise Power Solution for the AD5672R/AD5676R

### MICROPROCESSOR INTERFACING

Microprocessor interfacing to the AD5672R/AD5676R is performed via a serial bus that uses a standard protocol compatible with DSP processors and microcontrollers. The communications channel requires a 3-wire or 4-wire interface consisting of a clock signal, a data signal, and a synchronization signal. The devices require a 24-bit data-word with data valid on the rising edge of SYNC.

### AD5672R/AD5676R TO ADSP-BF531 INTERFACE

The SPI interface of the AD5672R/AD5676R can easily connect to industry-standard DSPs and microcontrollers. Figure 69 shows the AD5672R/AD5676R connected to the Analog Devices Blackfin® DSP. The Blackfin has an integrated SPI port that can connect directly to the SPI pins of the AD5672R/AD5676R.

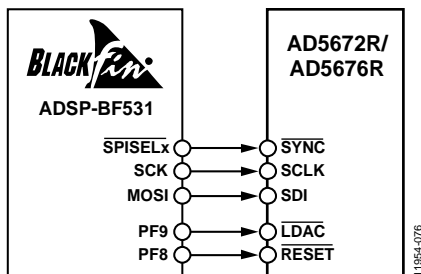


Figure 69. ADSP-BF531 Interface

### AD5672R/AD5676R TO SPORT INTERFACE

The Analog Devices ADSP-BF527 has one SPORT serial port. Figure 70 shows how a SPORT interface is used to control the AD5672R/AD5676R.

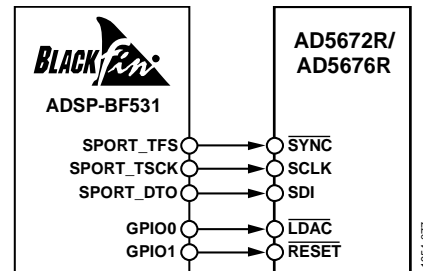


Figure 70. SPORT Interface

### LAYOUT GUIDELINES

In any circuit where accuracy is important, careful consideration of the power supply and ground return layout helps to ensure the rated performance. Design the PCB on which the AD5672R/AD5676R are mounted so that the devices lie on the analog plane.

The AD5672R/AD5676R must have ample supply bypassing of 10  $\mu\text{F}$  in parallel with 0.1  $\mu\text{F}$  on each supply, located as close to the package as possible, ideally right up against the device. The 10  $\mu\text{F}$  capacitors are tantalum bead type. The 0.1  $\mu\text{F}$  capacitors must have low effective series resistance (ESR) and low effective series inductance (ESI), such as the common ceramic types, which provide a low impedance path to ground at high frequencies to handle transient currents due to internal logic switching.

In systems where there are many devices on one board, it is often useful to provide some heat sinking capability to allow the power to dissipate easily.

The GND plane on the device can be increased (as shown in Figure 71) to provide a natural heat sinking effect.

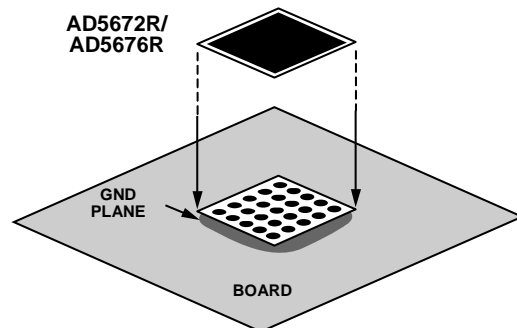
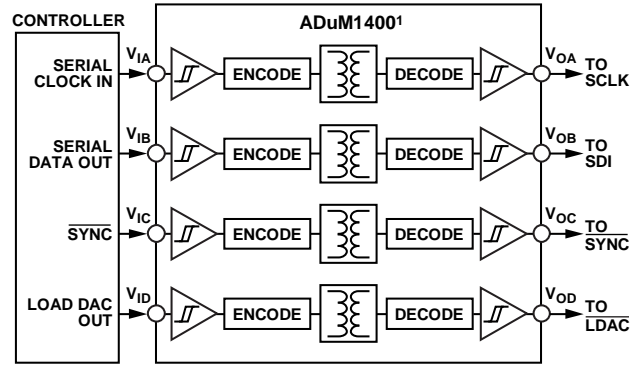


Figure 71. Pad Connection to the Board



**GALVANICALLY ISOLATED INTERFACE**

In many process control applications, it is necessary to provide an isolation barrier between the controller and the unit being controlled to protect and isolate the controlling circuitry from any hazardous common-mode voltages that may occur. *iCoupler*® products from Analog Devices provide voltage isolation in excess of 2.5 kV. The serial loading structure of the AD5672R/AD5676R makes the devices ideal for isolated interfaces because the number of interface lines is kept to a minimum. Figure 72 shows a 4-channel isolated interface to the AD5672R/AD5676R using an ADuM1400. For further information, visit [www.analog.com/icoupler](http://www.analog.com/icoupler).

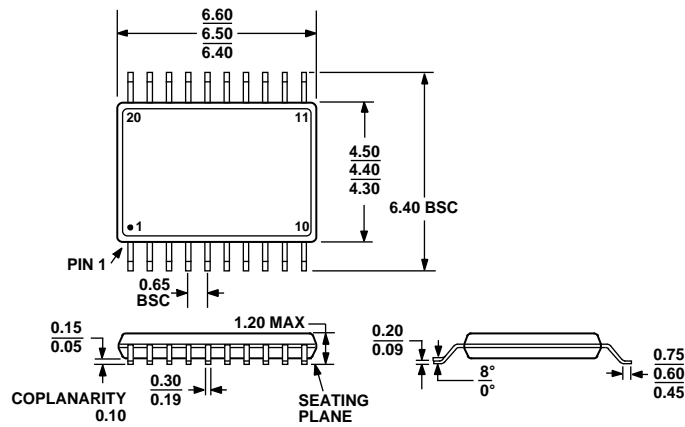


<sup>1</sup>ADDITIONAL PINS OMITTED FOR CLARITY.

Figure 72. Isolated Interface

11954-079

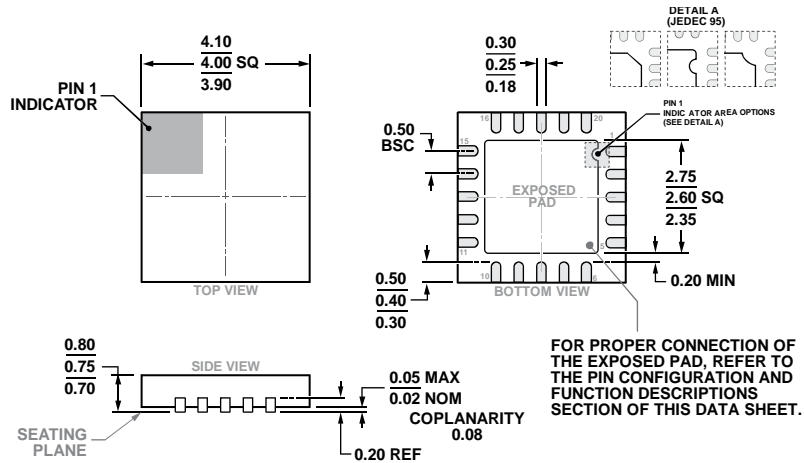
OUTLINE DIMENSIONS



COMPLIANT TO JEDEC STANDARDS MO-153-AC

Figure 73. 20-Lead Thin Shrink Small Outline Package [TSSOP] (RU-20)

Dimensions shown in millimeters



COMPLIANT TO JEDEC STANDARDS MO-220-WGGD-11.

Figure 74. 20-Lead Lead Frame Chip Scale Package [LFCSP] 4 mm × 4 mm Body and 0.75 mm Package Height (CP-20-8)

Dimensions shown in millimeters

## ORDERING GUIDE

| Model <sup>1,2</sup> | Resolution (Bits) | Temperature Range | Accuracy (LSB INL) | Typical Reference Temperature Coefficient (ppm/°C) | Package Description | Package Option |
|----------------------|-------------------|-------------------|--------------------|--|---------------------|----------------|
| AD5672RBRUZ          | 12                | -40°C to +125°C   | ±1                 | 2  | 20-Lead TSSOP       | RU-20          |
| AD5672RBRUZ-REEL7    | 12                | -40°C to +125°C   | ±1                 | 2  | 20-Lead TSSOP       | RU-20          |
| AD5672RBCPZ-REEL7    | 12                | -40°C to +125°C   | ±1                 | 2  | 20-Lead LFCSP       | CP-20-8        |
| AD5672RBCPZ-RL       | 12                | -40°C to +125°C   | ±1                 | 2  | 20-Lead LFCSP       | CP-20-8        |
| AD5676RARUZ          | 16                | -40°C to +125°C   | ±8                 | 5  | 20-Lead TSSOP       | RU-20          |
| AD5676RARUZ-REEL7    | 16                | -40°C to +125°C   | ±8                 | 5  | 20-Lead TSSOP       | RU-20          |
| AD5676RACPZ-REEL7    | 16                | -40°C to +125°C   | ±8                 | 5  | 20-Lead LFCSP       | CP-20-8        |
| AD5676RACPZ-RL       | 16                | -40°C to +125°C   | ±8                 | 5  | 20-Lead LFCSP       | CP-20-8        |
| AD5676RBRUZ          | 16                | -40°C to +125°C   | ±3                 | 2  | 20-Lead TSSOP       | RU-20          |
| AD5676RBRUZ-REEL7    | 16                | -40°C to +125°C   | ±3                 | 2  | 20-Lead TSSOP       | RU-20          |
| AD5676RBCPZ-REEL7    | 16                | -40°C to +125°C   | ±3                 | 2  | 20-Lead LFCSP       | CP-20-8        |
| AD5676RBCPZ-RL       | 16                | -40°C to +125°C   | ±3                 | 2  | 20-Lead LFCSP       | CP-20-8        |
| EVAL-AD5676RSDZ      |                   |                   |                    |  | Evaluation Board    |                |

<sup>1</sup> Z = RoHS Compliant Part.

<sup>2</sup> The EVAL-AD5676RSDZ is used to evaluate the AD5672R and AD5676R.

I<sup>2</sup>C refers to a communications protocol originally developed by Philips Semiconductors (now NXP Semiconductors).

Компания «Life Electronics» занимается поставками электронных компонентов импортного и отечественного производства от производителей и со складов крупных дистрибьюторов Европы, Америки и Азии.

С конца 2013 года компания активно расширяет линейку поставок компонентов по направлению коаксиальный кабель, кварцевые генераторы и конденсаторы (керамические, пленочные, электролитические), за счёт заключения дистрибьюторских договоров

Мы предлагаем:

- Конкурентоспособные цены и скидки постоянным клиентам.
- Специальные условия для постоянных клиентов.
- Подбор аналогов.
- Поставку компонентов в любых объемах, удовлетворяющих вашим потребностям.
- Приемлемые сроки поставки, возможна ускоренная поставка.
- Доставку товара в любую точку России и стран СНГ.
- Комплексную поставку.
- Работу по проектам и поставку образцов.
- Формирование склада под заказчика.
- Сертификаты соответствия на поставляемую продукцию (по желанию клиента).
- Тестирование поставляемой продукции.
- Поставку компонентов, требующих военную и космическую приемку.
- Входной контроль качества.
- Наличие сертификата ISO.

В составе нашей компании организован Конструкторский отдел, призванный помогать разработчикам, и инженерам.

Конструкторский отдел помогает осуществить:

- Регистрацию проекта у производителя компонентов.
- Техническую поддержку проекта.
- Защиту от снятия компонента с производства.
- Оценку стоимости проекта по компонентам.
- Изготовление тестовой платы монтаж и пусконаладочные работы.



Тел: +7 (812) 336 43 04 (многоканальный)  
Email: org@lifeelectronics.ru