

THIS DRAWING IS UNPUBLISHED. RELEASED FOR PUBLICATION 20  
 © COPYRIGHT 20 BY - ALL RIGHTS RESERVED.

| REVISIONS |     |                           |           |     |      |
|-----------|-----|---------------------------|-----------|-----|------|
| P         | LTR | DESCRIPTION               | DATE      | DWN | APVD |
|           | A   | REVISED PER ECR-18-014960 | 21SEP2018 | SS  | JL   |
|           | A1  | REVISED PER ECR-19-008871 | 13JUN2019 | SR  | DD   |
|           | A2  | REVISED PER ECR-19-009651 | 12JUL2019 | SR  | DD   |

1 MATERIALS:  
 HOUSING: PBT  
 DIMMING CONTACTS (QTY. 4): COPPER ALLOY  
 LINE VOLTAGE CONTACTS (QTY. 3): COPPER ALLOY  
 GASKET: VINYL/NITRILE FOAM  
 O-RING: SILICONE RUBBER  
 MEMBRANE VENT: PTFE

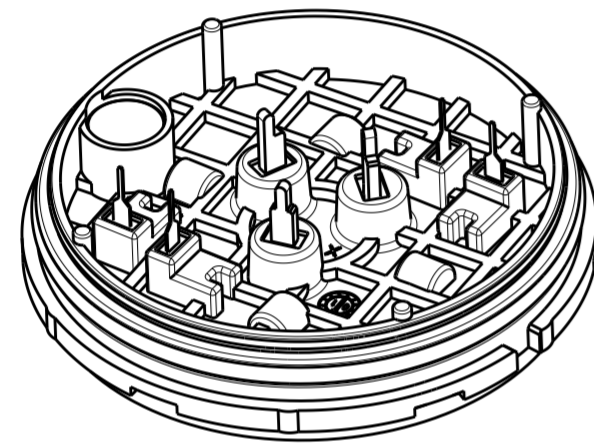
2 FINISH:  
 DIMMING CONTACTS: NICKEL UNDERPLATE ENTIRE  
 CONTACT 0.127 µm MIN THICK. SELECTIVE GOLD PLATE CONTACT  
 MATING AREA (MATING FACE SIDE ONLY) 0.76 µm MIN THICK.  
 MATTE TIN PLATE TAB ON BOTH SIDES 0.30 µm MIN THICK.  
 LINE VOLTAGE CONTACTS: MATTE TIN PLATE

3 MATING INTERFACE PER ANSI C136.41-2013.

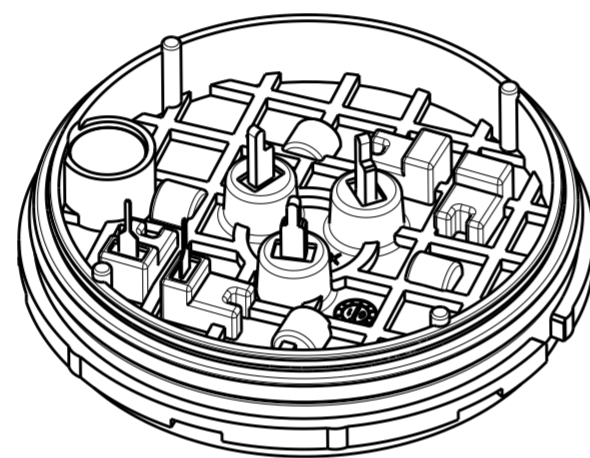
4 ADHESIVE BACKED GASKET SUPPLIED BUT NOT INSTALLED.

5 ADDITIONAL COVERS AND SLEEVES OF VARIOUS HEIGHTS ARE AVAILABLE. CONTACT TE CONNECTIVITY FOR MORE OPTIONS.

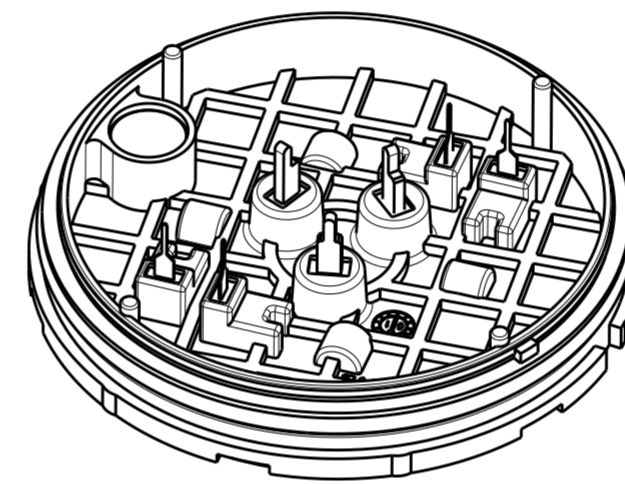
7. THIS PRODUCT HAS NOT COMPLETED VALIDATION TESTING.



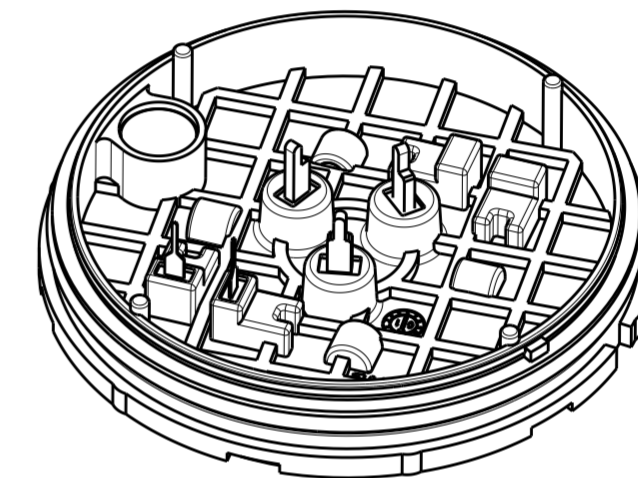
2336396-1 SHOWN



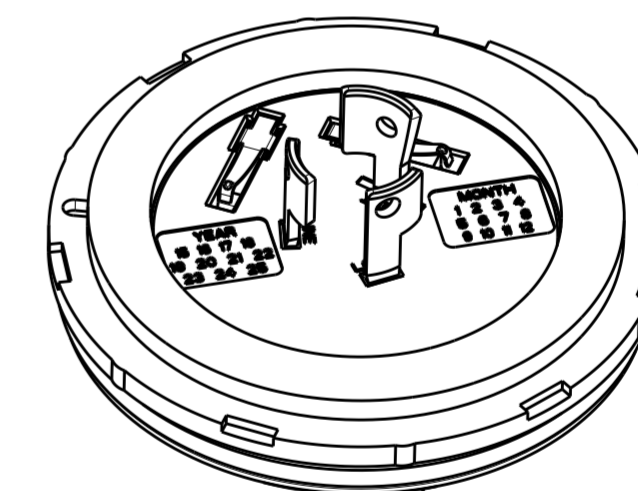
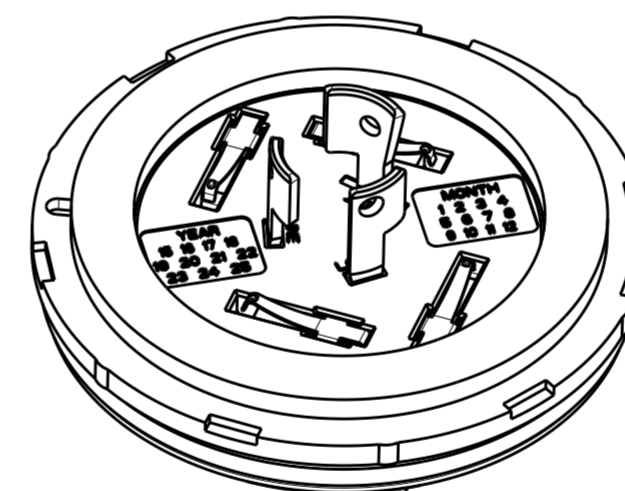
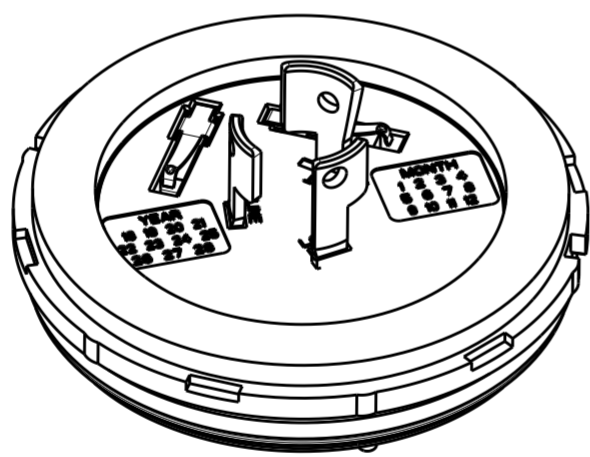
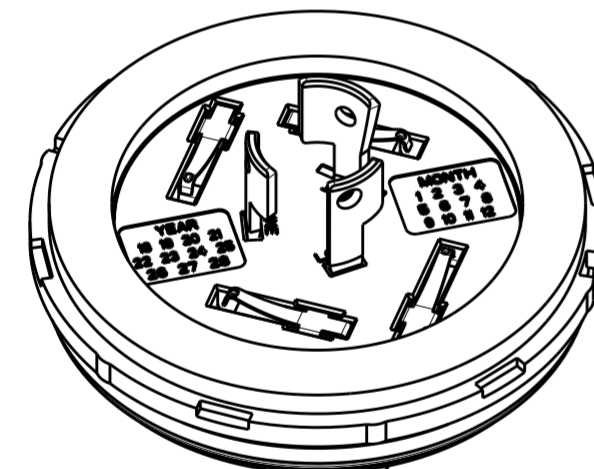
1-2336396-1 SHOWN



2336396-2 SHOWN



1-2336396-2 SHOWN



|                             |                            |                   |       |       |        |        |        |        |                       |                        |        |        |             |
|-----------------------------|----------------------------|-------------------|-------|-------|--------|--------|--------|--------|-----------------------|------------------------|--------|--------|-------------|
| 2213996-X                   | 2306130-X                  | 5                 | 13.04 | 26.20 | Ø82.24 | Ø78.54 | Ø69.80 | Ø70.70 | Ø72.25                | Ø77.53                 | Ø77.74 | Ø81.15 | 1-2336396-2 |
| 2213996-X                   | 2306130-X                  | 7                 | 13.04 | 26.20 | Ø82.24 | Ø78.54 | Ø69.80 | Ø70.70 | Ø72.25                | Ø77.53                 | Ø77.74 | Ø81.15 | 2336396-2   |
| 2213805-X                   | 2213748-X                  | 5                 | 4.35  | 27.45 | Ø77.00 | Ø76.96 | Ø64.50 | Ø65.00 | Ø66.75                | Ø71.23                 | Ø72.00 | Ø76.00 | 1-2336396-1 |
| 2213805-X                   | 2213748-X                  | 7                 | 4.35  | 27.45 | Ø77.00 | Ø76.96 | Ø64.50 | Ø65.00 | Ø66.75                | Ø71.23                 | Ø72.00 | Ø76.00 | 2336396-1   |
| REPRESENTATIVE SLEEVE P/N 5 | REPRESENTATIVE COVER P/N 5 | CONTACT POSITIONS | DIM T | DIM S | DIM Y  | DIM X  | DIM P  | DIM N  | DIM M MAX WITH SLEEVE | DIM M MAX W/OUT SLEEVE | DIM F  | DIM E  | PART NO.    |

THIS DRAWING IS A CONTROLLED DOCUMENT.

DWN: J. SHAFFER 03MAY2018  
 CHK: M. MOSTOLLER 03MAY2018  
 APVD: -

**STE** TE Connectivity

NAME: BASE ASSEMBLY, LIGHT CONTROLLER, SLEEVE COMPATIBLE

PRODUCT SPEC: 108-32125  
 APPLICATION SPEC: 114-32159

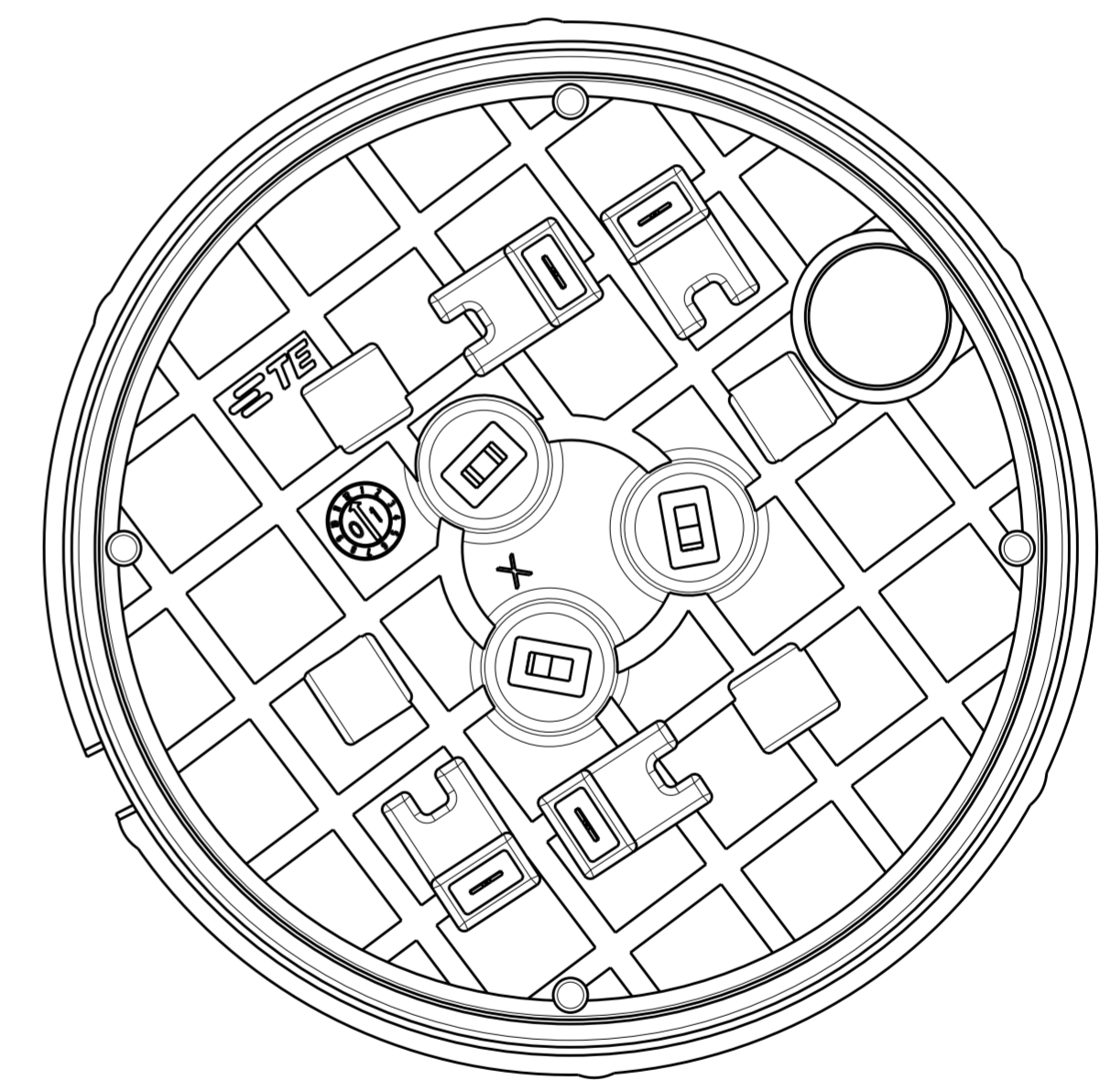
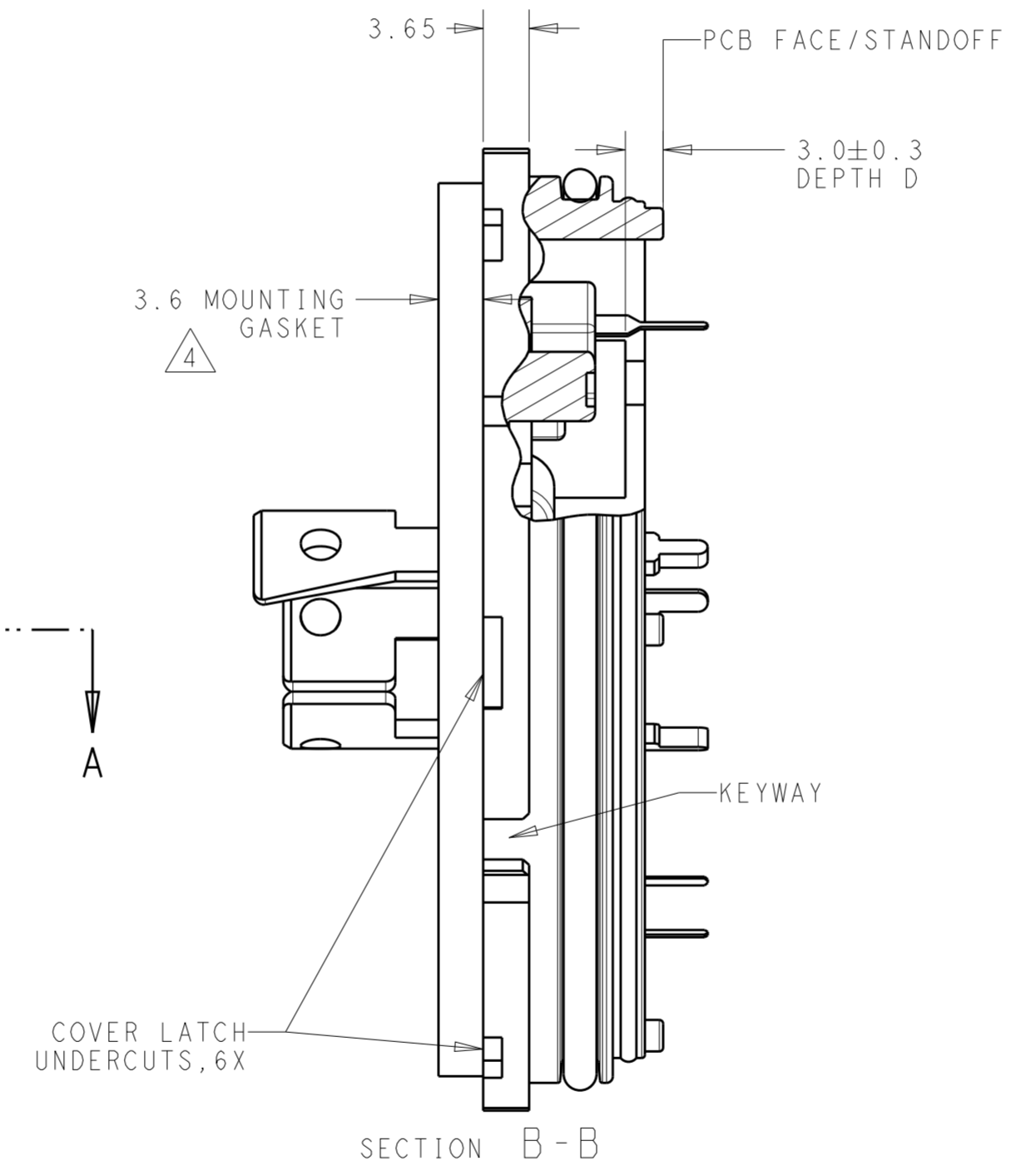
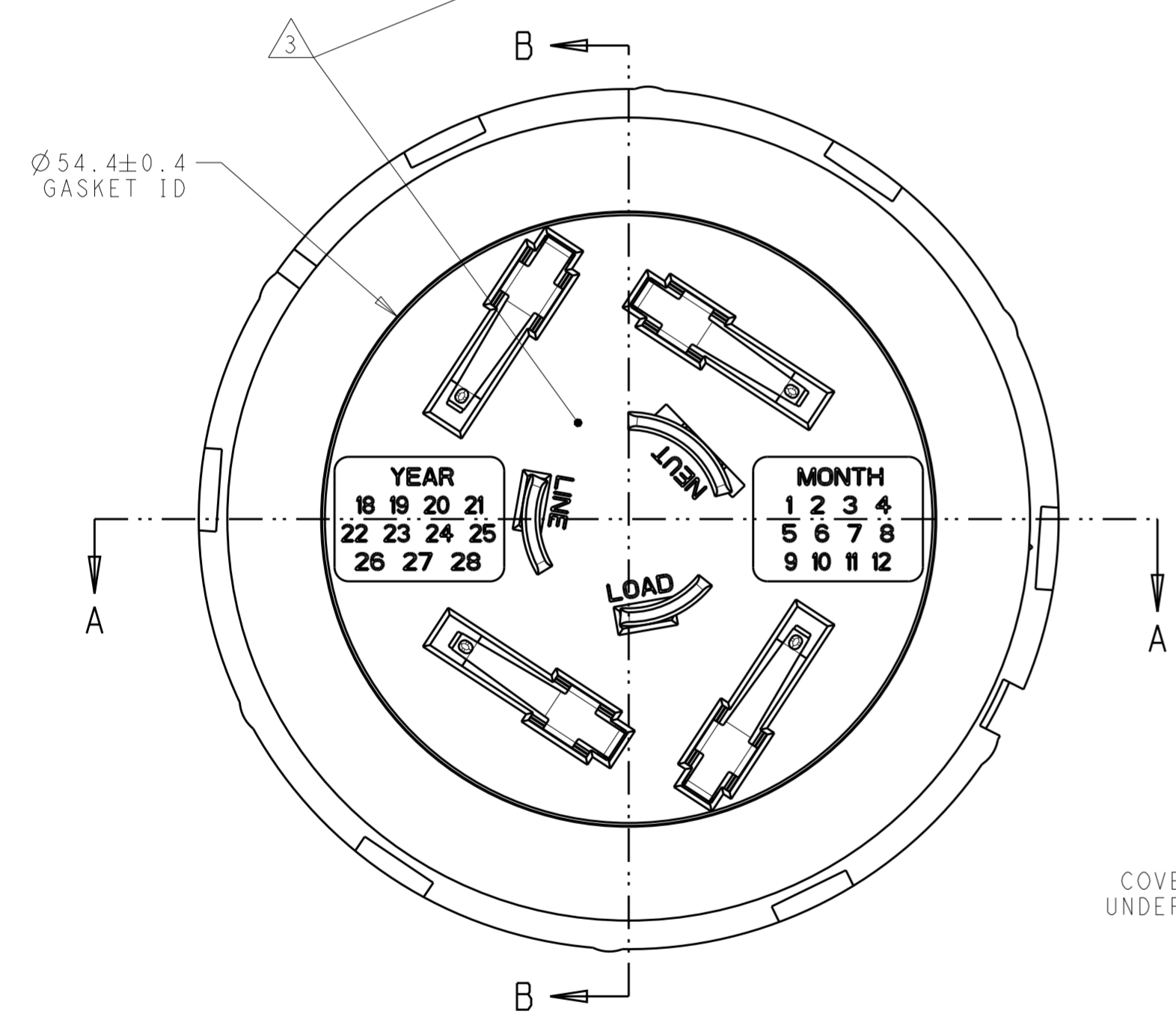
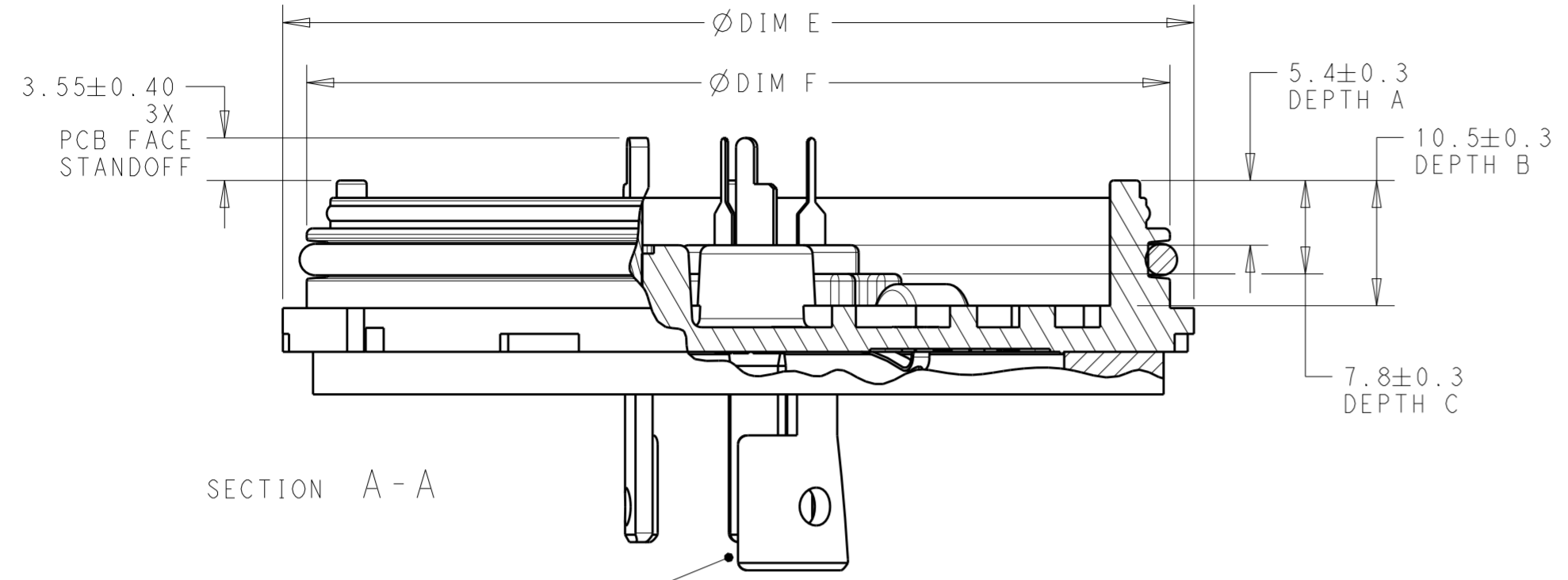
SIZE: A2  
 CAGE CODE: -  
 DRAWING NO: C-2336396

RESTRICTED TO: -

CUSTOMER DRAWING SCALE: 2:1 SHEET: 1 OF 5 REV: A2

THIS DRAWING IS UNPUBLISHED. RELEASED FOR PUBLICATION 20  
 © COPYRIGHT 20 BY - ALL RIGHTS RESERVED.

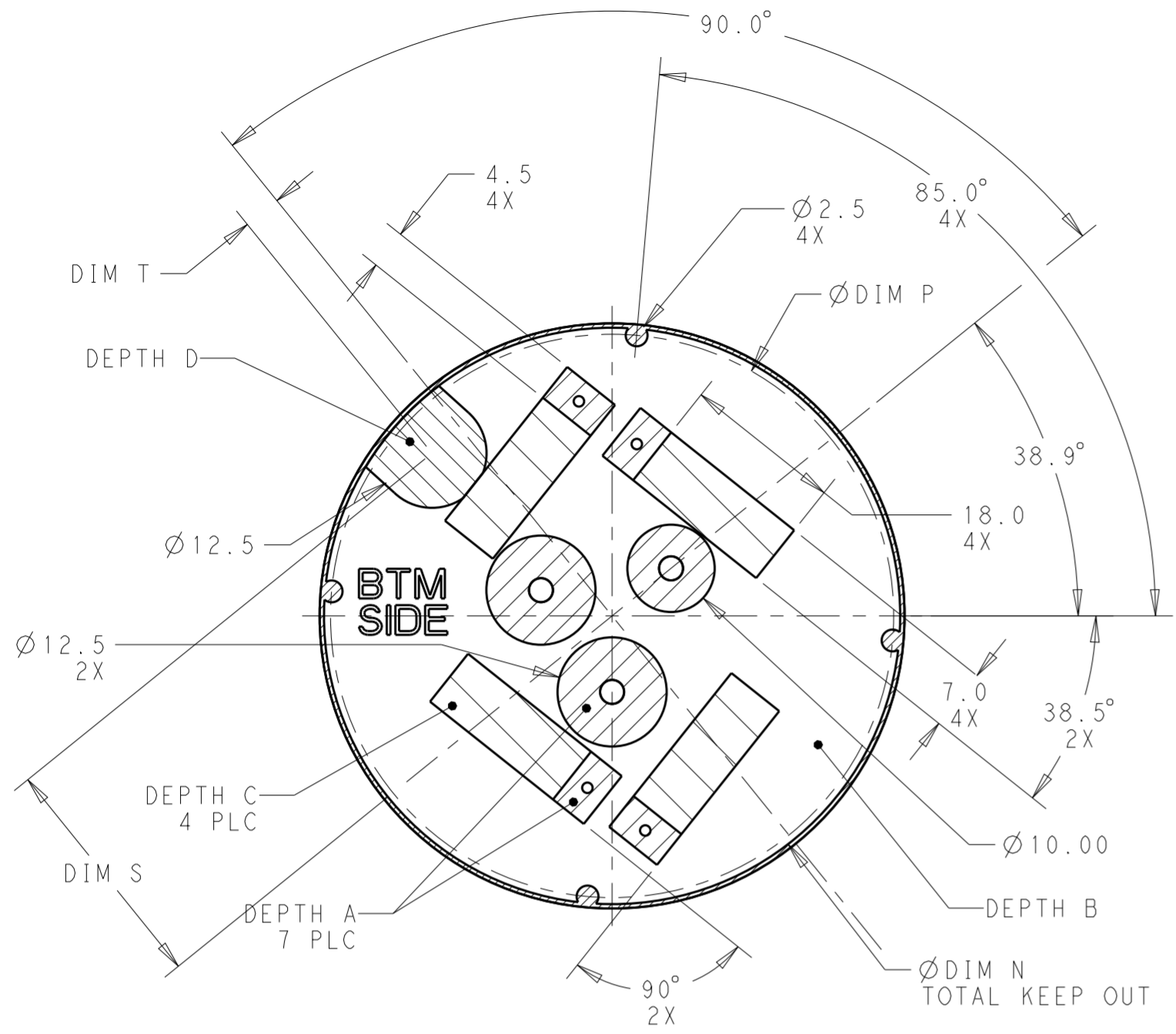
| REVISIONS |     |             |      |      |
|-----------|-----|-------------|------|------|
| P         | LTR | DESCRIPTION | DATE | APVD |
| -         | -   | SEE SHEET 1 | -    | -    |
|           |     |             |      |      |
|           |     |             |      |      |



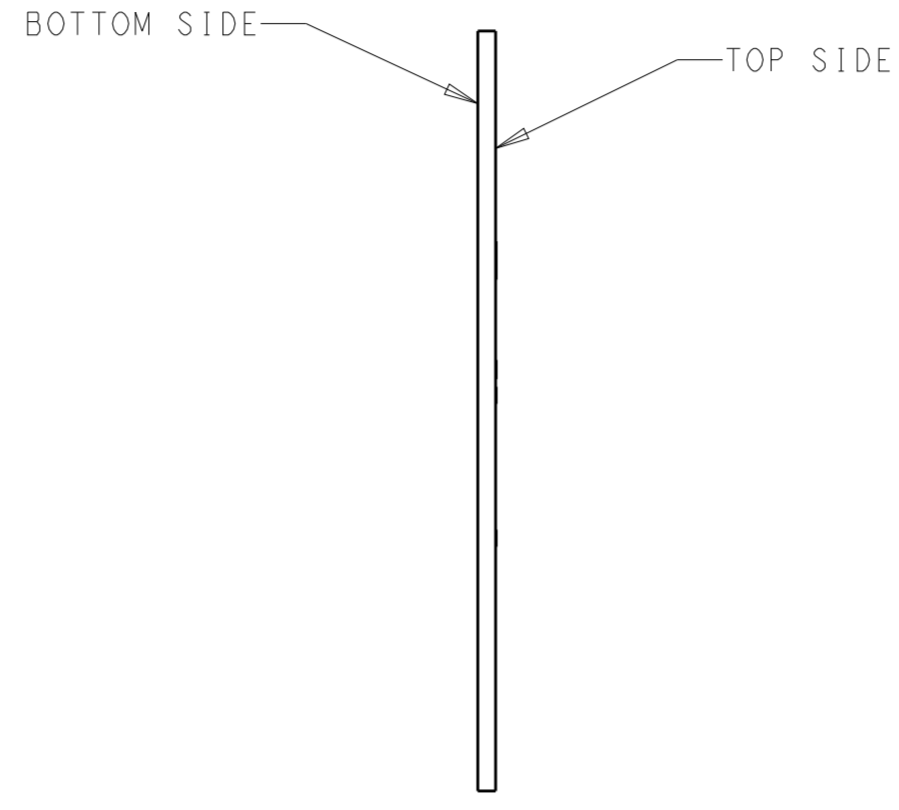
|  |  |  |                         |  |
|--|--|--|-------------------------|--|
| THIS DRAWING IS A CONTROLLED DOCUMENT. |  | DWN<br>J. SHAFFER<br>03MAY2018   | TE Connectivity         |  |
|  |  | CHK<br>M. MOSTOLLER<br>03MAY2018   |                         |  |
| DIMENSIONS:<br>mm                      |  | TOLERANCES UNLESS OTHERWISE SPECIFIED:<br>0 PLC ±<br>1 PLC ±0.2<br>2 PLC ±0.13<br>3 PLC ±<br>4 PLC ±<br>ANGLES ±3°<br>FINISH |                         | NAME<br>BASE ASSEMBLY,<br>LIGHT CONTROLLER,<br>SLEEVE COMPATIBLE |
|  |  | PRODUCT SPEC<br>108-32125  | SIZE<br>A2              | CAGE CODE<br>-   |
| MATERIAL<br>-                          |  | APPLICATION SPEC<br>114-32159  | DRAWING NO<br>C-2336396 | RESTRICTED TO<br>-   |
|  |  | WEIGHT<br>-  | SCALE<br>2:1            | SHEET<br>2 OF 5  |
|  |  | CUSTOMER DRAWING   | REV<br>A2               |  |

THIS DRAWING IS UNPUBLISHED. RELEASED FOR PUBLICATION 20  
 © COPYRIGHT 20 BY - ALL RIGHTS RESERVED.

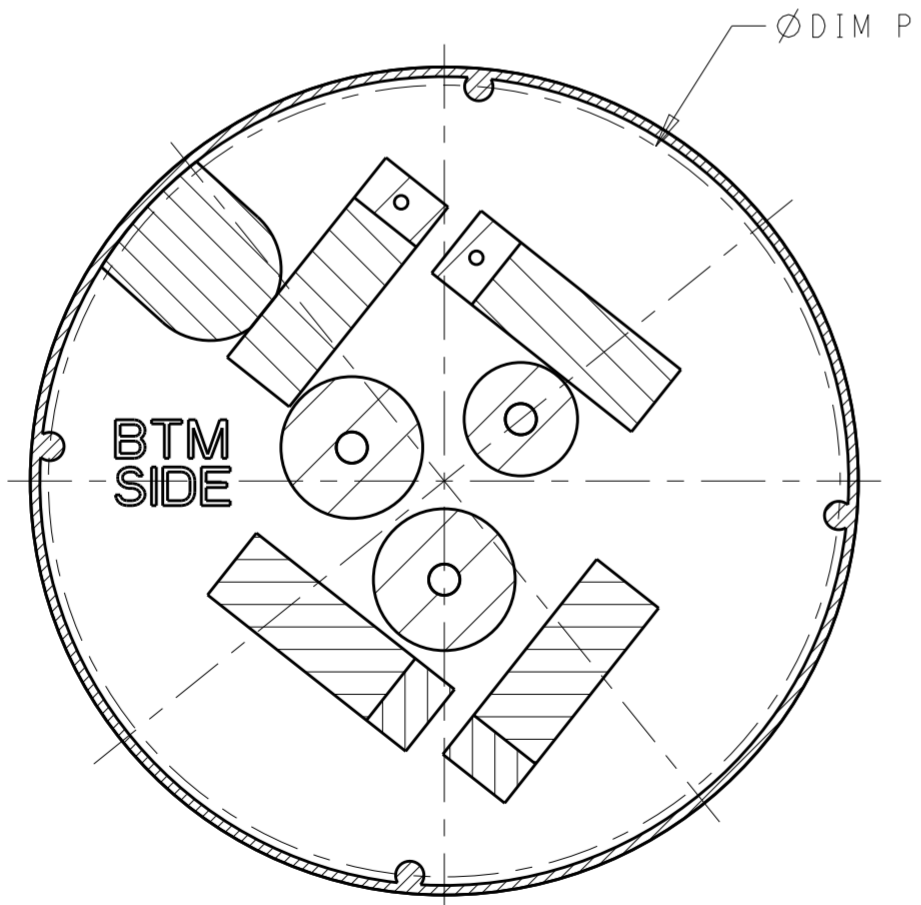
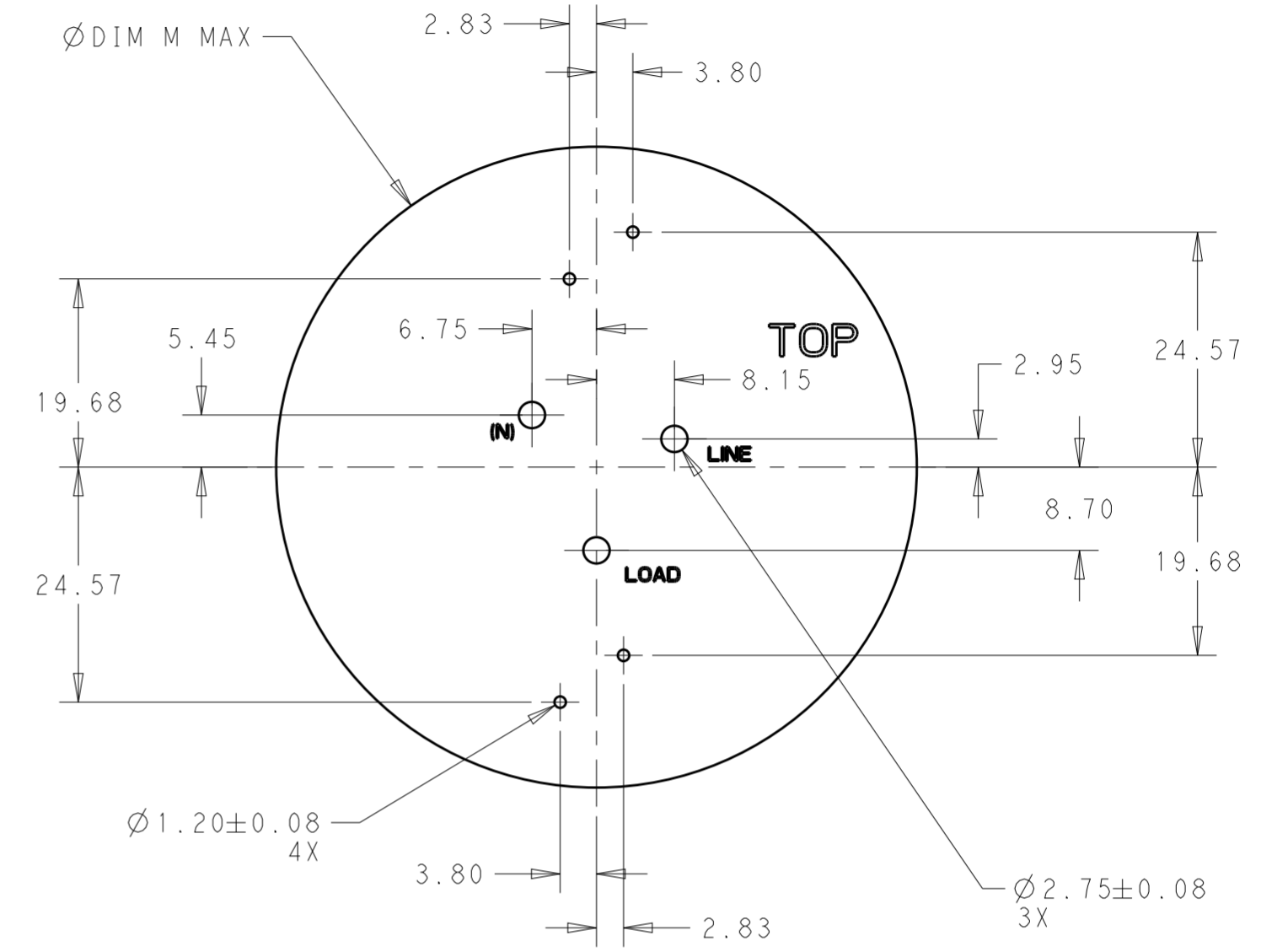
| REVISIONS |     |             |      |      |
|-----------|-----|-------------|------|------|
| P         | LTR | DESCRIPTION | DATE | APVD |
| -         | -   | SEE SHEET 1 | -    | -    |
|           |     |             |      |      |
|           |     |             |      |      |



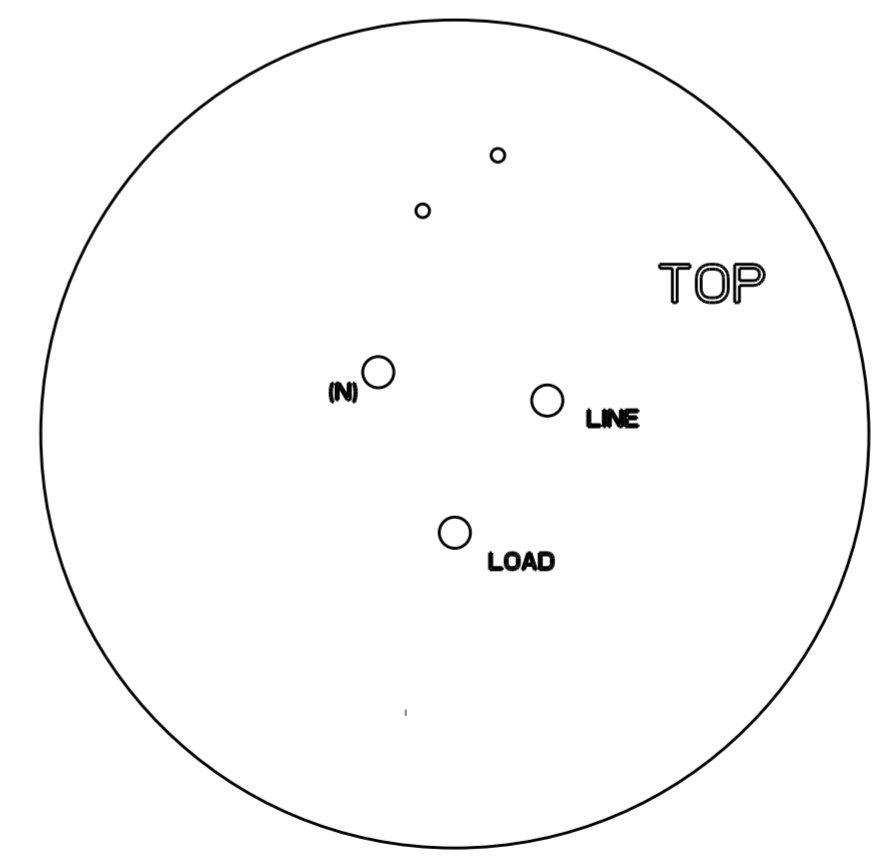
COMPONENT KEEP OUT AREAS  
 2336396-1 AND 2336396-2


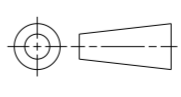


RECOMMENDED PCB  
 SCALE 3:2



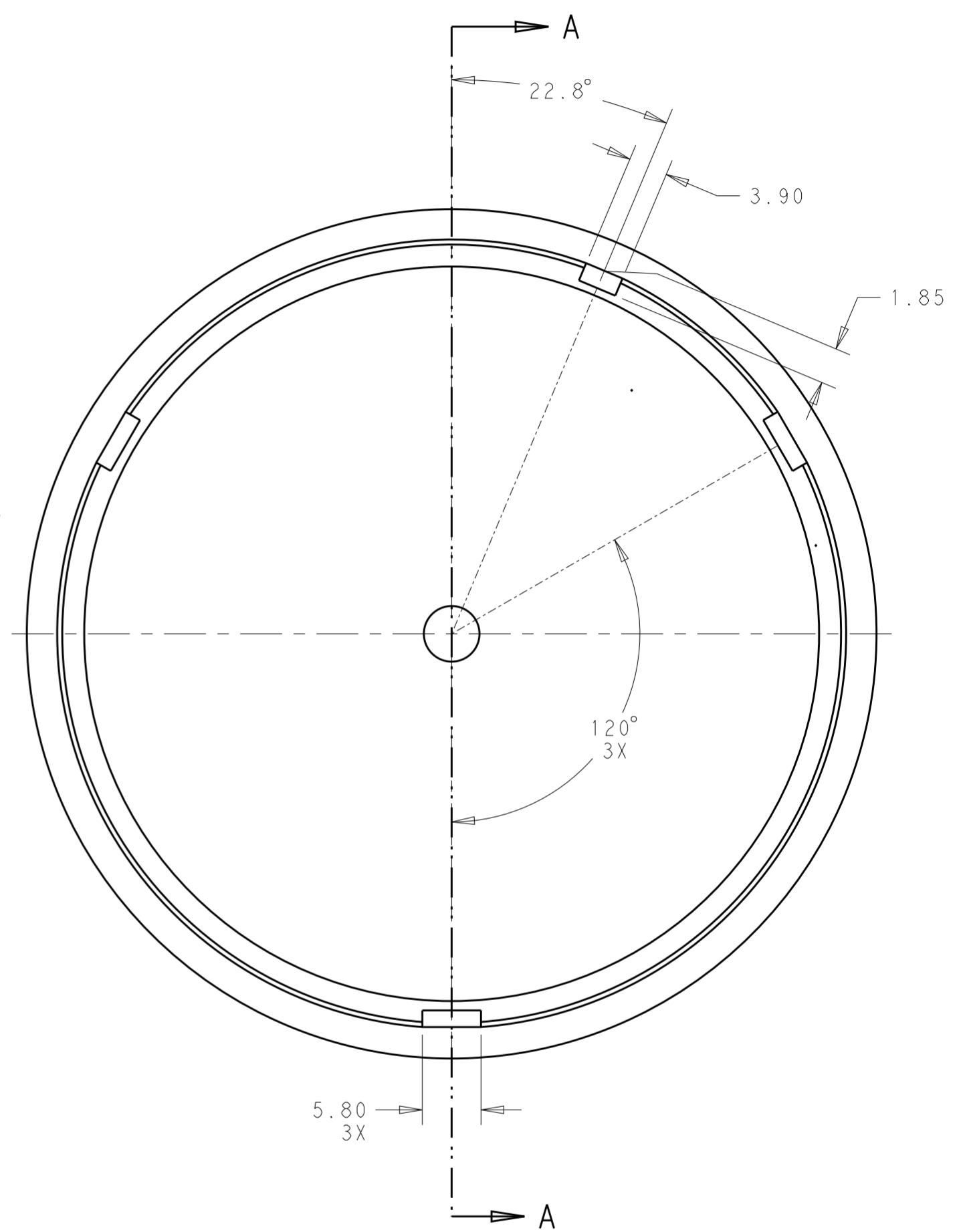
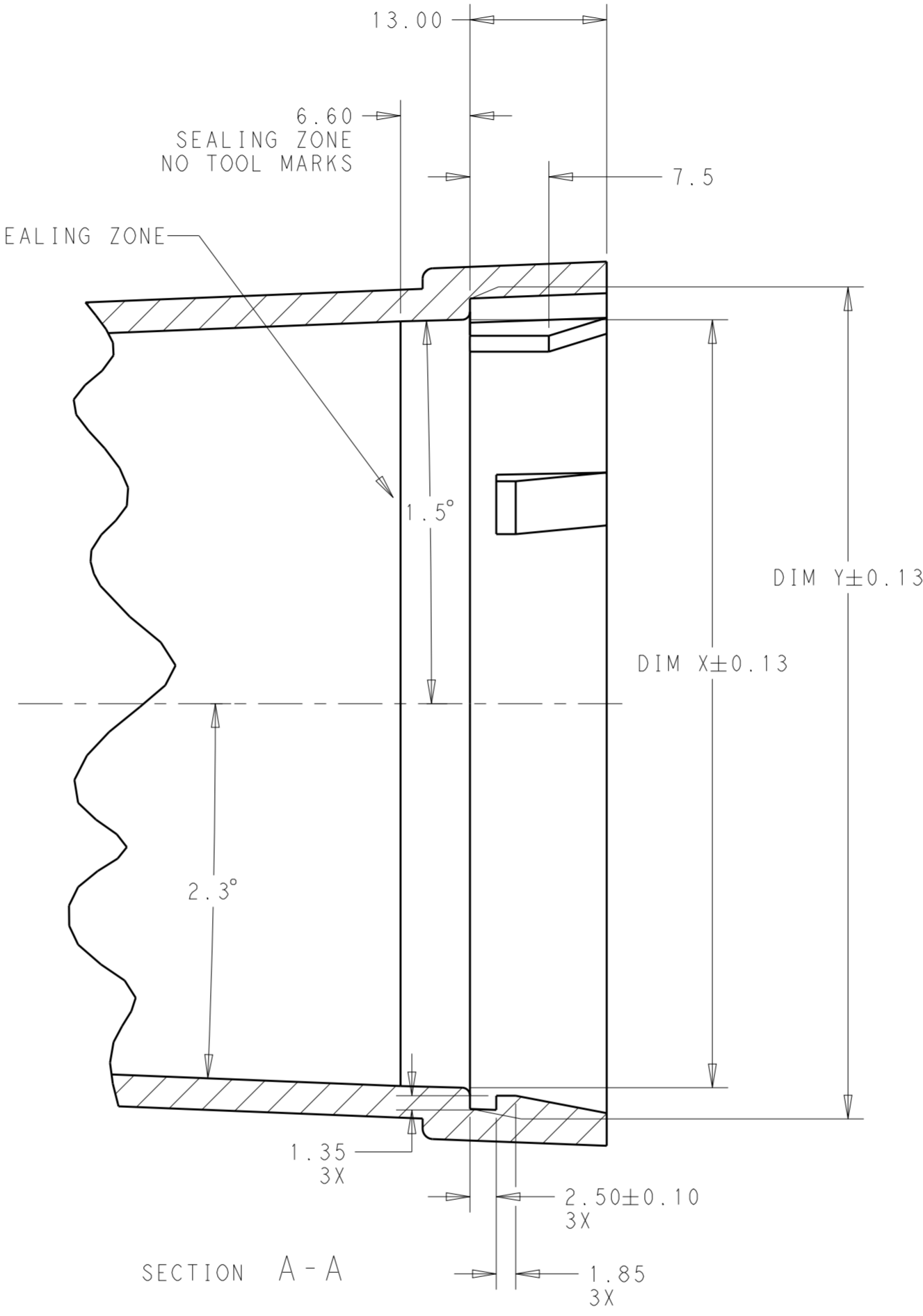
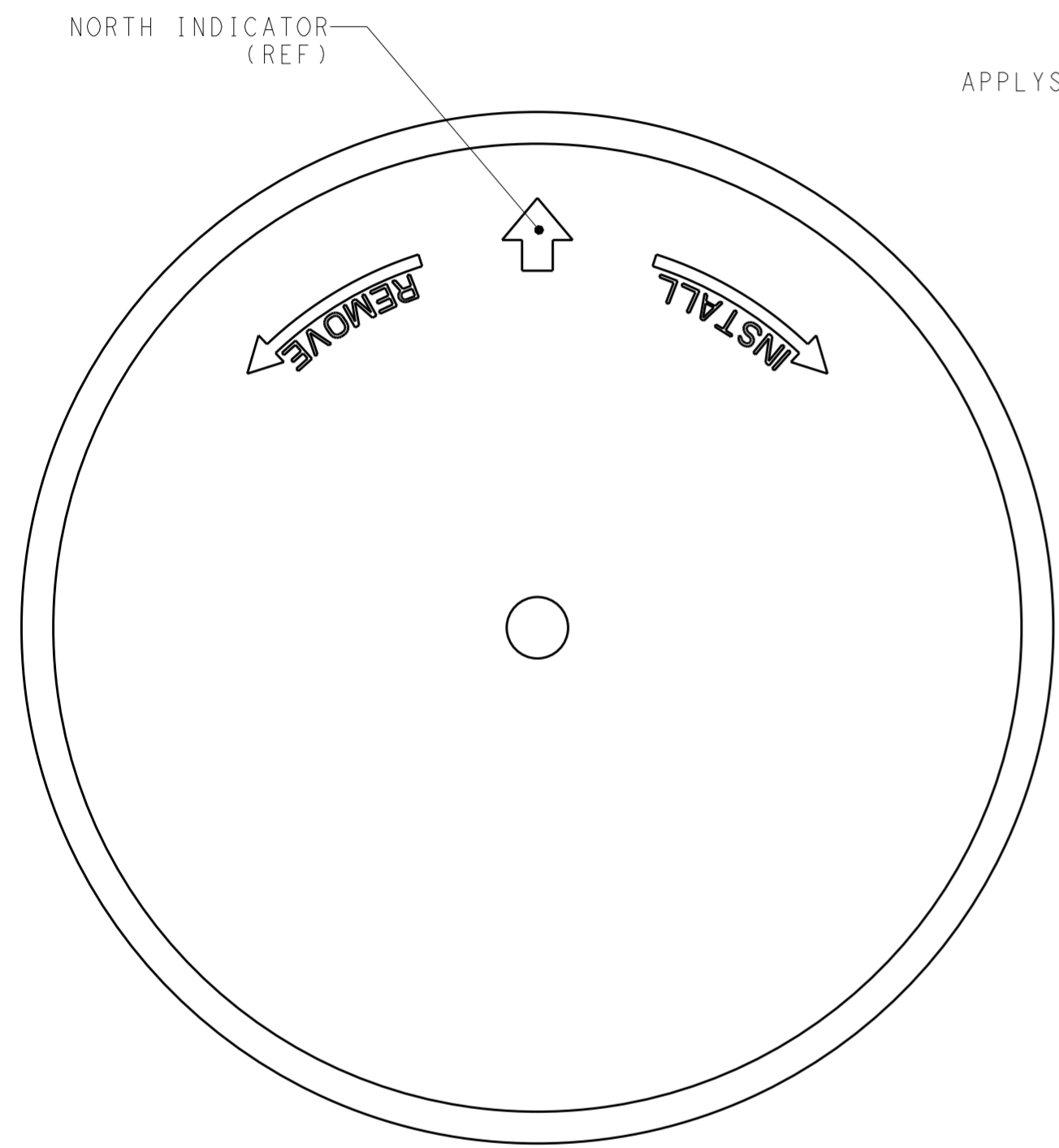
COMPONENT KEEP OUT AREAS  
 1-2336396-1 AND 1-2336396-2  
 SAME AS  
 2336396-1 AND 2336396-2  
 EXCEPT WHERE SHOWN




|   |  |                                  |   |  |
|---|--|----------------------------------|---|--|
| THIS DRAWING IS A CONTROLLED DOCUMENT.  |  | DWN<br>J. SHAFFER<br>03MAY2018   |  TE Connectivity |  |
|   |  | CHK<br>M. MOSTOLLER<br>03MAY2018 |   |  |
| DIMENSIONS:   |  | APVD                             |   | NAME   |
| mm  |  | PRODUCT SPEC                     |   | BASE ASSEMBLY,<br>LIGHT CONTROLLER,<br>SLEEVE COMPATIBLE |
|  |  | APPLICATION SPEC                 |   | SIZE   |
| 0 PLC ±<br>1 PLC ±0.2<br>2 PLC ±0.13<br>3 PLC ±<br>4 PLC ±<br>ANGLES ±3°<br>FINISH    |  | 114-32159                        |   | CAGE CODE  |
| MATERIAL  |  | WEIGHT                           |   | DRAWING NO   |
| -   |  | -                                |   | A2   |
| -   |  | CUSTOMER DRAWING                 |   | RESTRICTED TO  |
|   |  | SCALE 2:1                        |   | SHEET 3 OF 5   |
|   |  |                                  |   | REV A2   |

THIS DRAWING IS UNPUBLISHED. RELEASED FOR PUBLICATION 20  
 © COPYRIGHT 20 BY - ALL RIGHTS RESERVED.

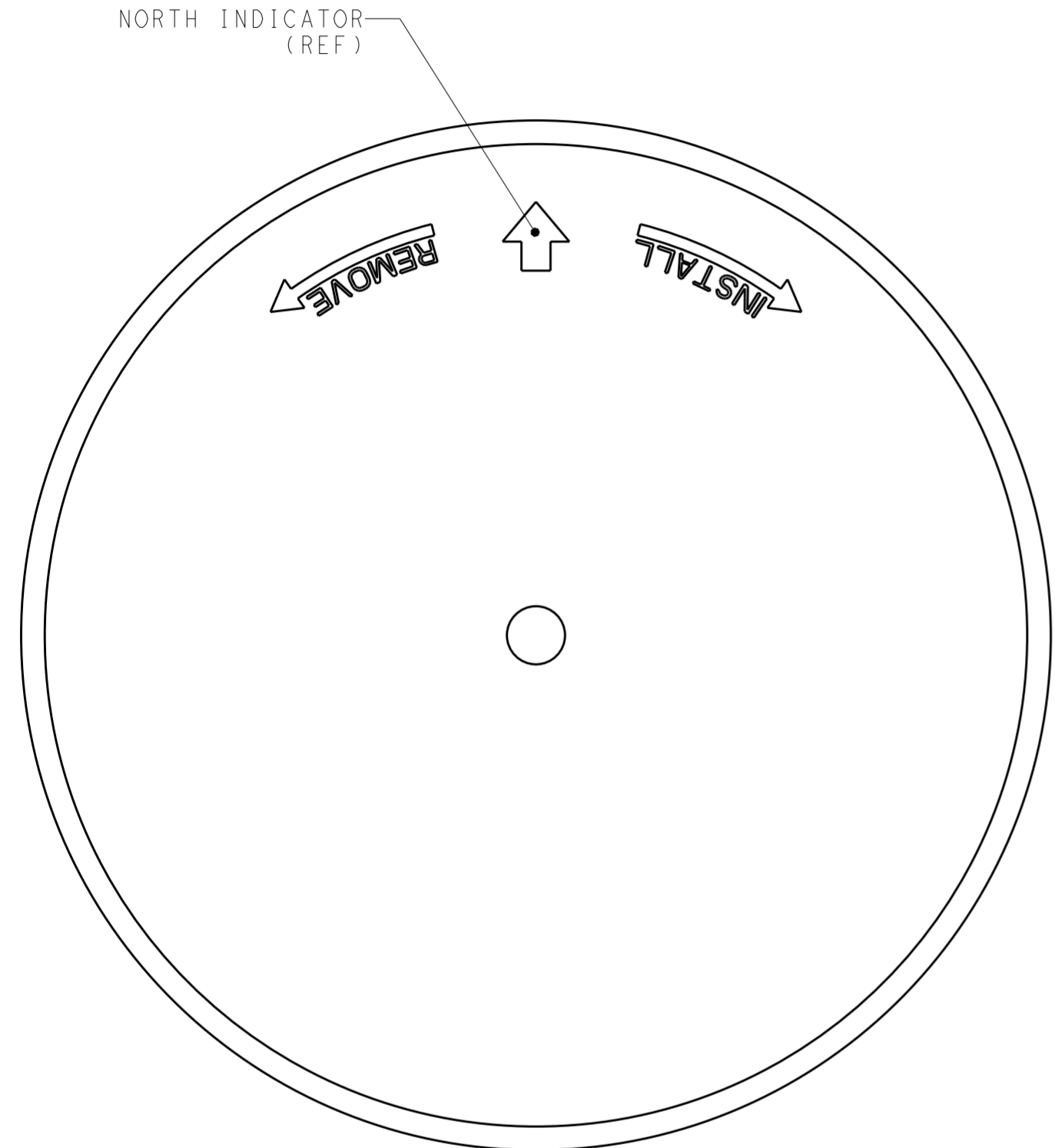
| REVISIONS |     |             |      |      |
|-----------|-----|-------------|------|------|
| P         | LTR | DESCRIPTION | DATE | APVD |
| -         | -   | SEE SHEET 1 | -    | -    |
|           |     |             |      |      |
|           |     |             |      |      |



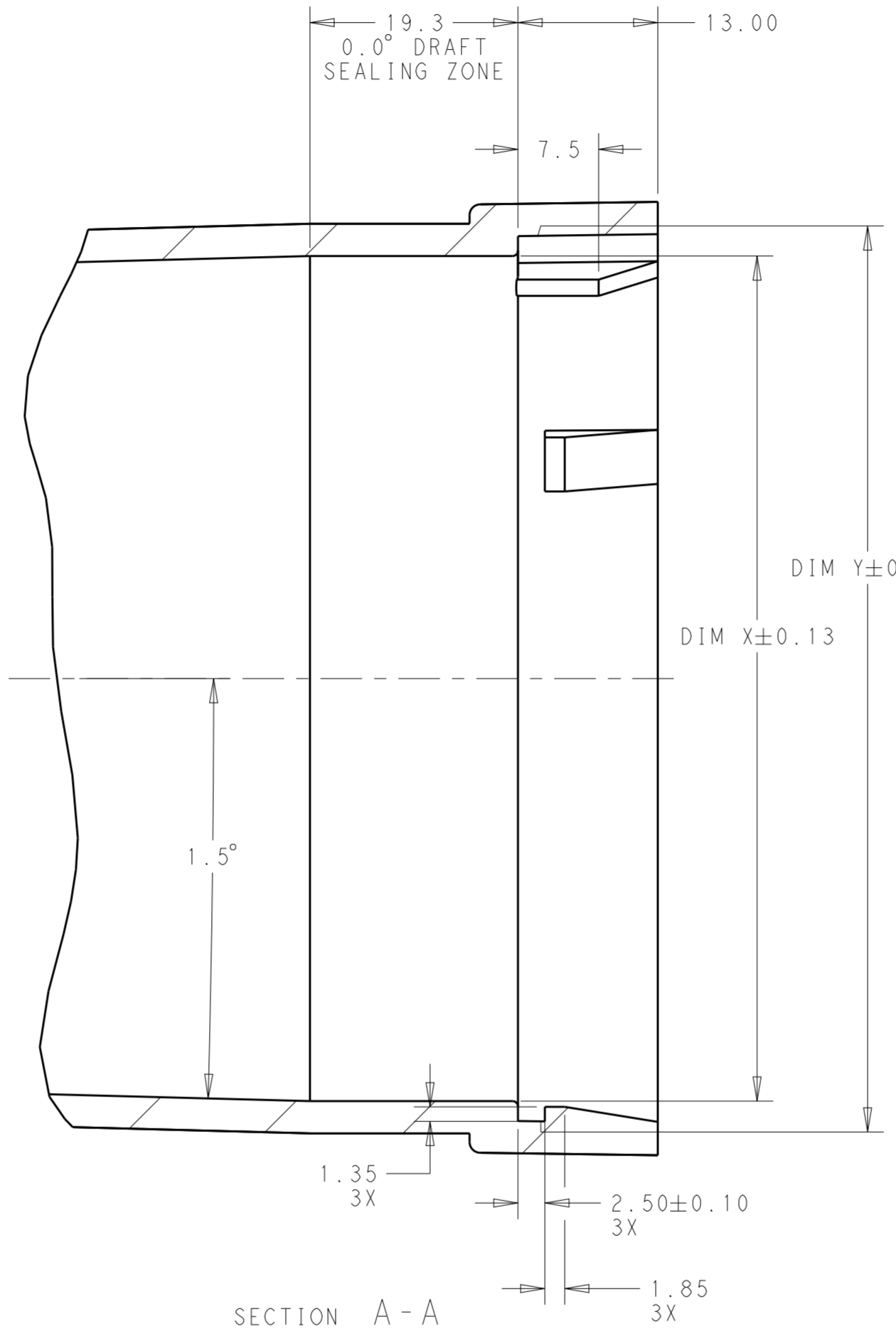
MATING COVER DIMENSIONS  
 FOR  
 76MM DIAMETER BASES  
 (2336396-1, 1-2336396-1)

|  |  |                                  |   |                    |
|--|--|----------------------------------|---|--------------------|
| THIS DRAWING IS A CONTROLLED DOCUMENT. |  | DWN<br>J. SHAFFER<br>03MAY2018   |  TE Connectivity |                    |
| DIMENSIONS:                            |  | CHK<br>M. MOSTOLLER<br>03MAY2018 |   |                    |
| mm                                     | TOLERANCES UNLESS OTHERWISE SPECIFIED: | APVD<br>-                        | NAME<br>BASE ASSEMBLY,<br>LIGHT CONTROLLER,<br>SLEEVE COMPATIBLE                                      |                    |
| 0 PLC ±                                | 1 PLC ±0.2                             | PRODUCT SPEC<br>108-32125        | SIZE<br>A2  | CAGE CODE<br>-     |
| 2 PLC ±0.13                            | 3 PLC ±                                | APPLICATION SPEC<br>114-32159    | DRAWING NO<br>C-2336396   | RESTRICTED TO<br>- |
| 4 PLC ±                                | ANGLES ±3°                             | WEIGHT<br>-                      | SCALE<br>2:1  | SHEET<br>4 OF 5    |
| MATERIAL<br>-                          | FINISH<br>-                            | CUSTOMER DRAWING                 | REV<br>A2   |                    |

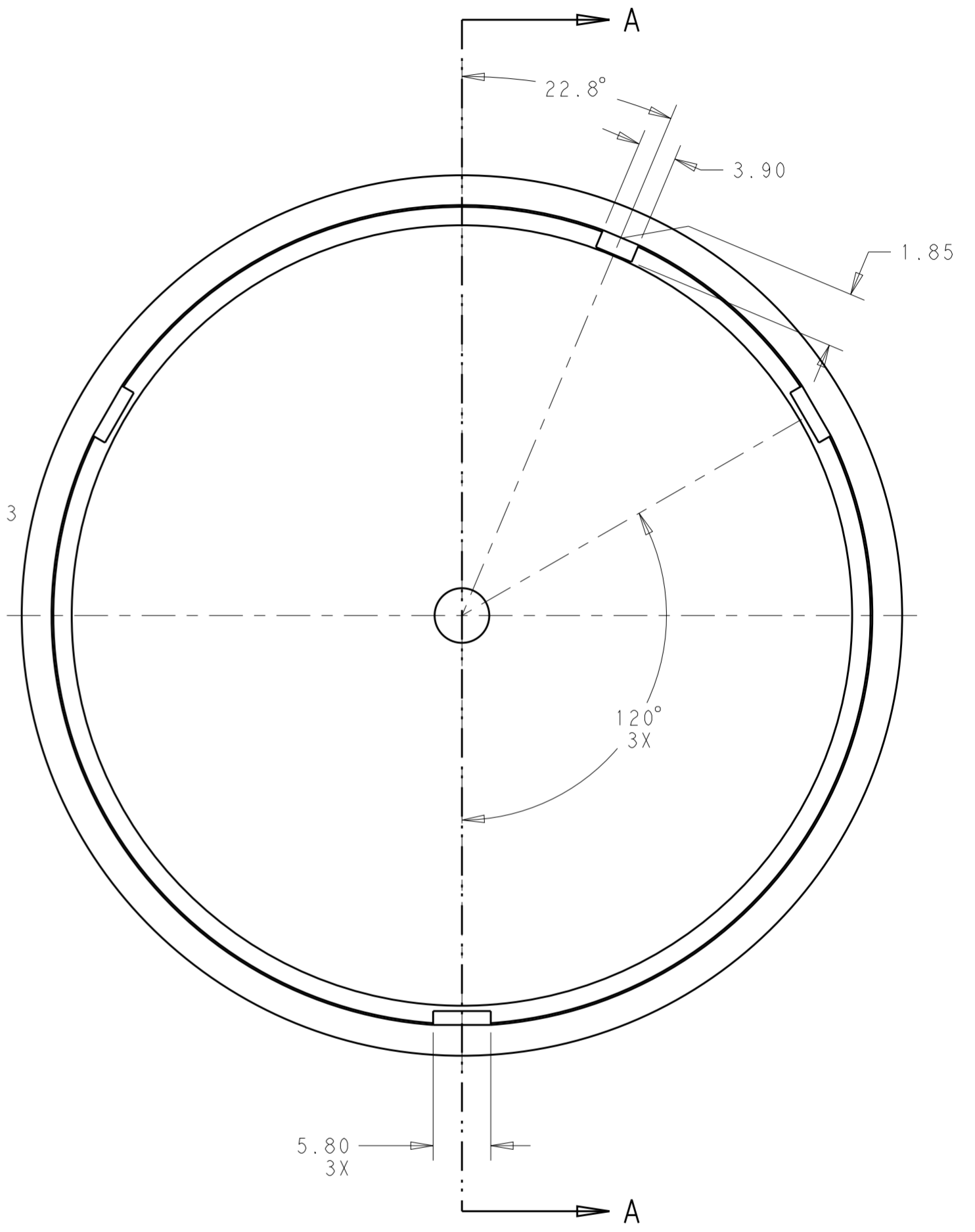
| REVISIONS |     |             |      |      |
|-----------|-----|-------------|------|------|
| P         | LTR | DESCRIPTION | DATE | APVD |
| -         | -   | SEE SHEET 1 | -    | -    |
|           |     |             |      |      |
|           |     |             |      |      |




SCALE 2:1



SECTION A - A



MATING COVER DIMENSIONS  
 FOR  
 81MM DIAMETER BASES  
 (2336396-2, 1-2336396-2)

|  |  |                                  |   |                |                          |
|--|--|----------------------------------|---|----------------|--------------------------|
| THIS DRAWING IS A CONTROLLED DOCUMENT.   |  | DWN<br>J. SHAFFER<br>03MAY2018   |  TE Connectivity |                |                          |
| DIMENSIONS:<br>mm  |  | CHK<br>M. MOSTOLLER<br>03MAY2018 |   |                |                          |
| TOLERANCES UNLESS OTHERWISE SPECIFIED:<br>0 PLC ±<br>1 PLC ±0.2<br>2 PLC ±0.13<br>3 PLC ±<br>4 PLC ±<br>ANGLES ±3°<br>FINISH - |  | APVD<br>-                        | NAME<br>BASE ASSEMBLY,<br>LIGHT CONTROLLER,<br>SLEEVE COMPATIBLE                                      |                |                          |
| MATERIAL<br>-  |  | PRODUCT SPEC<br>108-32125        | SIZE<br>A2  | CAGE CODE<br>- | DRAWING NO.<br>C-2336396 |
| -  |  | APPLICATION SPEC<br>114-32159    | RESTRICTED TO<br>-  |                |                          |
| -  |  | WEIGHT<br>-                      | SCALE 2:1 SHEET 5 OF 5 REV A2   |                |                          |
| -  |  | CUSTOMER DRAWING                 |   |                |                          |

Компания «Life Electronics» занимается поставками электронных компонентов импортного и отечественного производства от производителей и со складов крупных дистрибьюторов Европы, Америки и Азии.

С конца 2013 года компания активно расширяет линейку поставок компонентов по направлению коаксиальный кабель, кварцевые генераторы и конденсаторы (керамические, пленочные, электролитические), за счёт заключения дистрибьюторских договоров

Мы предлагаем:

- Конкуренеспособные цены и скидки постоянным клиентам.
- Специальные условия для постоянных клиентов.
- Подбор аналогов.
- Поставку компонентов в любых объемах, удовлетворяющих вашим потребностям.
- Приемлемые сроки поставки, возможна ускоренная поставка.
- Доставку товара в любую точку России и стран СНГ.
- Комплексную поставку.
- Работу по проектам и поставку образцов.
- Формирование склада под заказчика.
- Сертификаты соответствия на поставляемую продукцию (по желанию клиента).
- Тестирование поставляемой продукции.
- Поставку компонентов, требующих военную и космическую приемку.
- Входной контроль качества.
- Наличие сертификата ISO.

В составе нашей компании организован Конструкторский отдел, призванный помогать разработчикам, и инженерам.

Конструкторский отдел помогает осуществить:

- Регистрацию проекта у производителя компонентов.
- Техническую поддержку проекта.
- Защиту от снятия компонента с производства.
- Оценку стоимости проекта по компонентам.
- Изготовление тестовой платы монтаж и пусконаладочные работы.



Тел: +7 (812) 336 43 04 (многоканальный)

Email: [org@lifeelectronics.ru](mailto:org@lifeelectronics.ru)