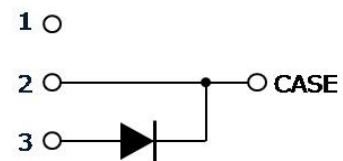


# CoolSiC™ Automotive Schottky Diode 650V G5

650V/40A Silicon Carbide Schottky Diode in TO247-3

## Features

- Revolutionary semiconductor material - Silicon Carbide
- Benchmark switching behavior
- No reverse recovery/ No forward recovery
- Temperature independent switching behavior
- High surge current capability
- Pb-free lead plating; RoHS compliant
- Junction Temperature range from -40°C to 175°C
- System efficiency improvement over Si diodes
- System cost / size savings due to reduced cooling requirements
- Enabling higher frequency / increased power density solutions
- Higher system reliability due to lower operating temperatures
- Reduced EMI



## Potential Applications

- Traction inverter
- Booster / DCDC Converter
- On board Charger / PFC



Green



RoHS



## Product Validation

“Qualified for Automotive Applications. Product Validation according to AEC-Q100/101”

## Description

The 5th Generation CoolSiC™ Automotive Schottky Diode represents Infineon leading edge technology for Silicon Carbide Schottky Barrier diodes. Thanks to a compact design and a technology based on thin wafers, this family of products shows improved efficiency over all load conditions resulting from both its thermal characteristics and low figure of merit ( $Q_C \times V_f$ ). This product family has been designed to complement Infineon's IGBT and CoolMOS™ portfolio. This ensures meeting the most stringent application requirements in the 650V voltage class.

Product Information	
Ordering Code	AIDW40S65C5
Marking	AD4065C5
Package	PG-TO247-3-41
SP Number	SP001725204

Parameter	Value/Unit
$V_{DC,max}$	650 V
$I_F; T_C < 117\text{ °C}$	40 A
$Q_C; V_R = 400\text{ V}$	56 nC
$E_C; V_R = 400\text{ V}$	12.9 $\mu\text{J}$
$T_{j,max}$	175 °C

Pin	Definition
Pin 2, case	Cathode
Pin 3	Anode

---

Table of Contents

**Table of Contents**

Features.....	1
Potential Applications.....	1
Product Validation.....	1
Description.....	1
Table of Contents.....	2
1 Maximum Ratings.....	3
2 Thermal Characteristics.....	4
3 Electrical Characteristics.....	5
4 Electrical Characteristics Diagrams.....	6
5 Package Outlines.....	9
Revision History.....	10

Maximum Ratings

# 1 Maximum Ratings

Table 1 Maximum ratings<sup>1</sup>

Parameter	Symbol	Value	Unit
Repetitive peak reverse voltage	$V_{RRM}$	650	V
Continuous forward current for $R_{thJC,max}$ $T_C = 117\text{ °C}$ , $D=1$	$I_F$	40	A
Surge non-repetitive forward current, sine halfwave $T_C = 25\text{ °C}$ , $t_p = 10\text{ms}$ $T_C = 150\text{ °C}$ , $t_p = 10\text{ms}$	$I_{F,SM}$	182 153	A
Non-repetitive peak forward current $T_C = 25\text{ °C}$ , $t_p = 10\mu\text{s}$	$I_{F,max}$	1432	A
$i^2t$ value $T_C = 25\text{ °C}$ , $t_p = 10\text{ms}$ $T_C = 150\text{ °C}$ , $t_p = 10\text{ms}$	$\int i^2 dt$	166 118	$A^2s$
Diode $dv/dt$ ruggedness $V_R = 0 \dots 480\text{V}$	$dv/dt$	100	V/ns
Power dissipation $T_C = 25\text{ °C}$	$P_{tot}$	183	W
Operating temperature	$T_j$	-40...175	°C
Storage temperature	$T_{stg}$	-55...150	°C
ESD Human body model, $R = 1.5\text{ k}\Omega$ , $C = 100\text{ pF}$ Charged device model		8 2	kV
Soldering temperature, wavesoldering only allowed at leads, 1.6mm (0.063 in.) from case for 10 s	$T_{sold}$	260	°C
Mounting Torque (M3 and M4 screws)		70	Ncm

Thermal Characteristics

## 2 Thermal Characteristics

Table 2 Thermal Characteristics<sup>1</sup>

Parameter	Symbol	Values			Unit	Note/Test condition
		Min.	Typ.	Max.		
Thermal resistance, junction–case <sup>2</sup>	$R_{thJC}$	-	0.6	0.8	K/W	
Thermal resistance, junction-ambient <sup>2</sup>	$R_{thJA}$	-	-	62	K/W	

Electrical Characteristics

### 3 Electrical Characteristics

Table 3 Static Characteristics

Parameter	Symbol	Values			Unit	Note/Test condition
		Min.	Typ.	Max.		
DC blocking voltage	$V_{DC}$	650	-	-	V	$T_j = 25^\circ\text{C}$ , $I_R = 0.12\text{ mA}$
Diode forward voltage <sup>3</sup>	$V_F$	-	1.5	1.7		$T_j = 25^\circ\text{C}$ , $I_F = 40\text{ A}$
		-	1.8	2.1		$T_j = 150^\circ\text{C}$ , $I_F = 40\text{ A}$
Reverse current	$I_R$	-	7	120	$\mu\text{A}$	$V_R = 650\text{ V}$ , $T_j = 25^\circ\text{C}$
		-	47	-		$V_R = 650\text{ V}$ , $T_j = 150^\circ\text{C}$

Table 4 Dynamic Characteristics at  $T_j=25^\circ\text{C}$  unless noted otherwise

Parameter	Symbol	Values			Unit	Note/Test condition
		Min.	Typ.	Max.		
Total capacitive charge	$Q_C$	-	56	-	nC	$V_R = 400\text{ V}$ , $di/dt = 200\text{ A}/\mu\text{s}$ , $I_F \leq I_{F,MAX}$ , $T_j = 150^\circ\text{C}$
Total capacitance	C	-	1138	-	pF	$V_R = 1\text{ V}$ , $f = 1\text{ MHz}$
		-	148	-		$V_R = 300\text{ V}$ , $f = 1\text{ MHz}$
		-	145	-		$V_R = 600\text{ V}$ , $f = 1\text{ MHz}$

Footnotes:

- <sup>1</sup> The parameter is not subject to production test- verified by design/characterization.
- <sup>2</sup>  $R_{th,JC}$  defined as per JESD-51-14.  $R_{th,JA}$  defined as per JESD-51-2.
- <sup>3</sup> Only the value at  $25^\circ\text{C}$  is subject to production test. The value at  $150^\circ\text{C}$  is only verified by design/characterization.

Electrical Characteristics Diagrams

4 Electrical Characteristics Diagrams

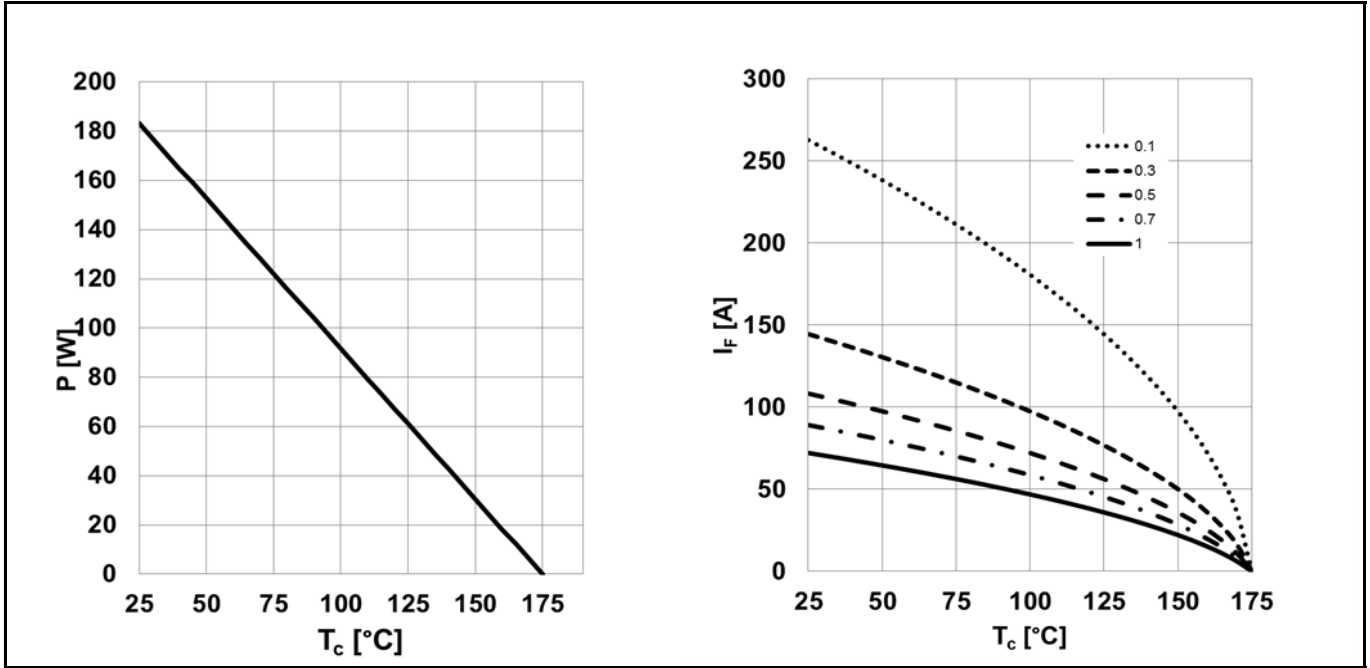


Figure 1 (LEFT) Power dissipation;  $P_{tot} = f(T_C)$ ;  $R_{thJC,max}$   
 (RIGHT) Diode forward current;  $I_F = f(T_C)$ ;  $T_j \leq 175\text{ °C}$ ;  $R_{thJC,max}$ ; parameter: D=duty cycle

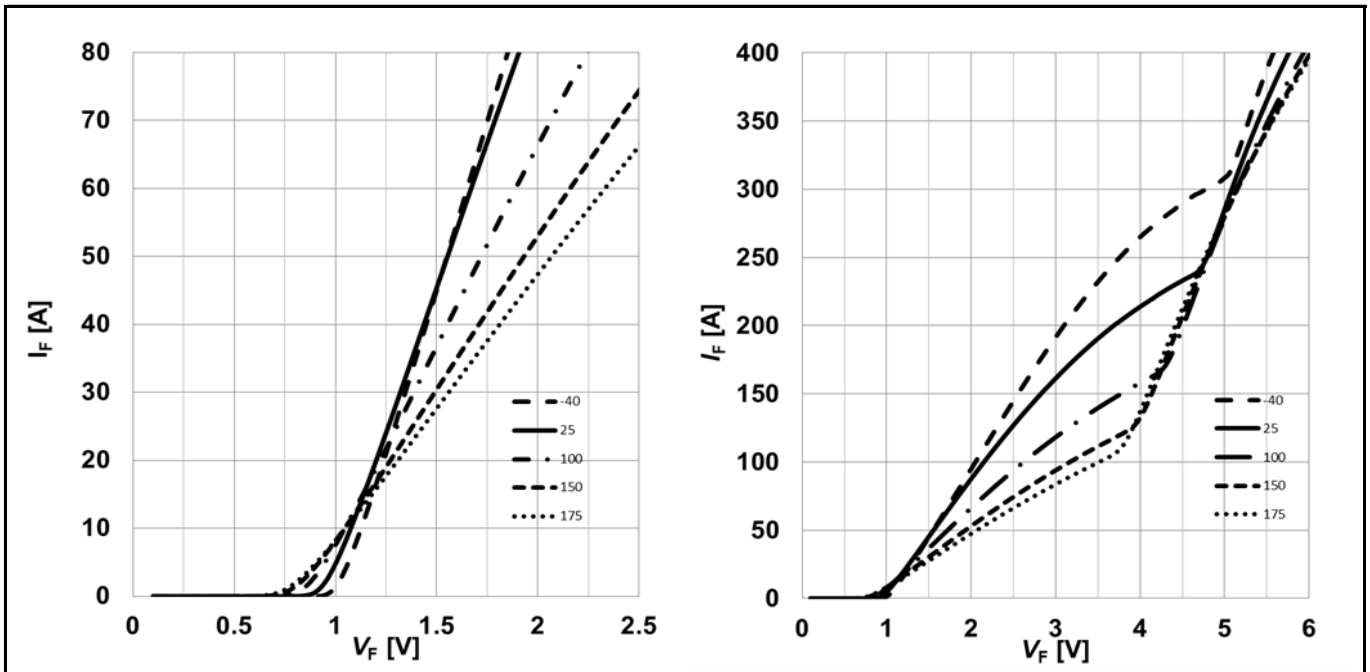


Figure 2 (LEFT) Typical forward characteristic;  $I_F = f(V_F)$ ;  $t_p = 200\text{ }\mu\text{s}$ ; parameter:  $T_j$   
 (RIGHT) Typical forward characteristics in surge current;  $I_F = f(V_F)$ ;  $t_p = 200\text{ }\mu\text{s}$ ; parameter:  $T_j$

Electrical Characteristics Diagrams

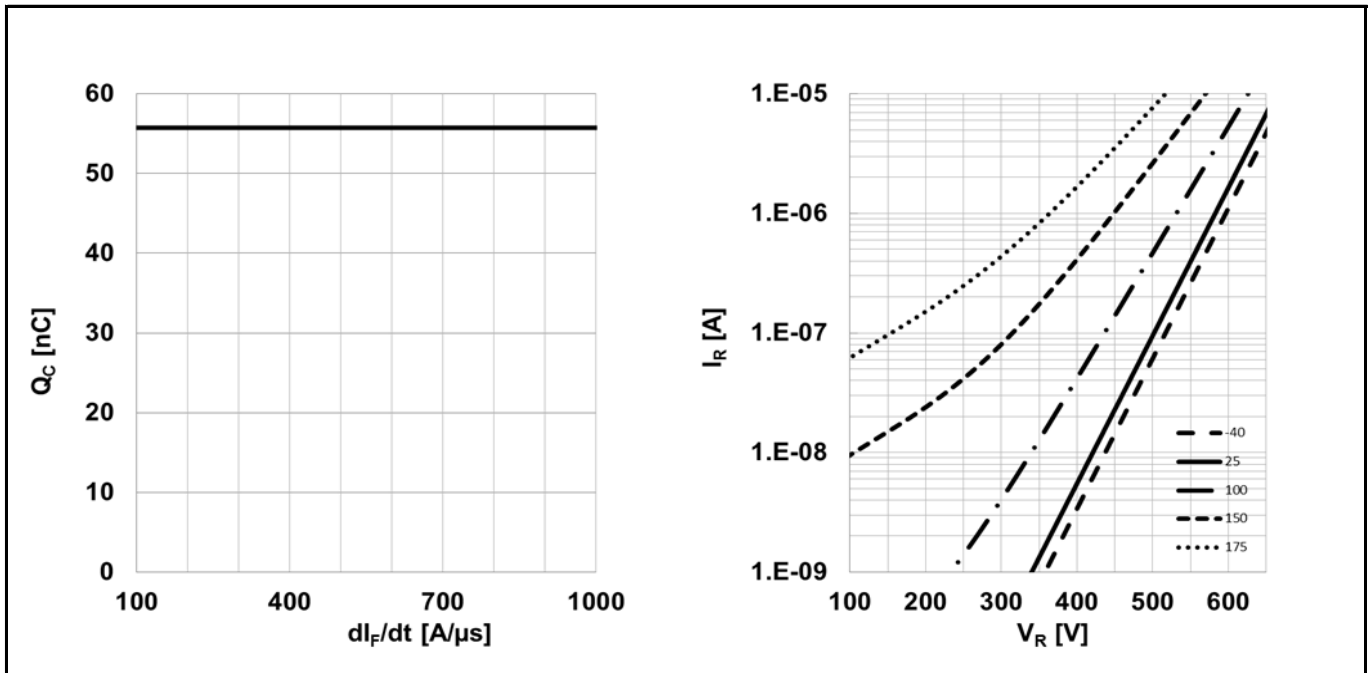


Figure 3 (LEFT) Typical capacitive charge versus current slope (only capacitive charge, guaranteed by design);  $Q_C = f(di_F/dt)$ ;  $T_j = 150^\circ\text{C}$ ;  $V_R = 400\text{V}$ ;  $I_F \leq I_{F,max}$   
(RIGHT) Typical reverse current versus reverse voltage;  $I_R = f(V_R)$ ; parameter:  $T_j$

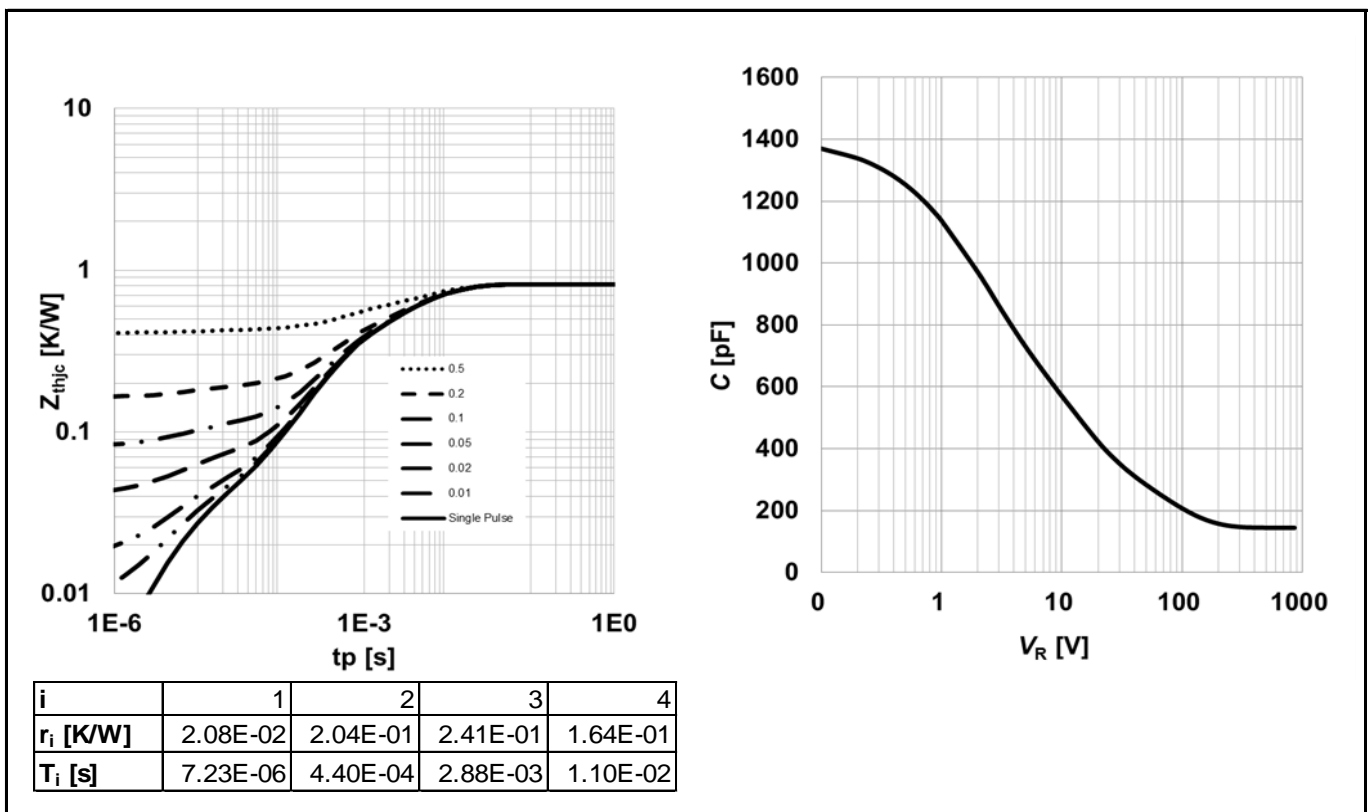


Figure 4 (LEFT) Max. Transient thermal impedance;  $Z_{thJC} = f(t_p)$ ; parameter:  $D = t_p/T$   
(RIGHT) Typ. Capacitance vs. Reverse voltage;  $C = f(V_R)$ ;  $T_j = 25^\circ\text{C}$ ;  $f = 1\text{ MHz}$

Electrical Characteristics Diagrams

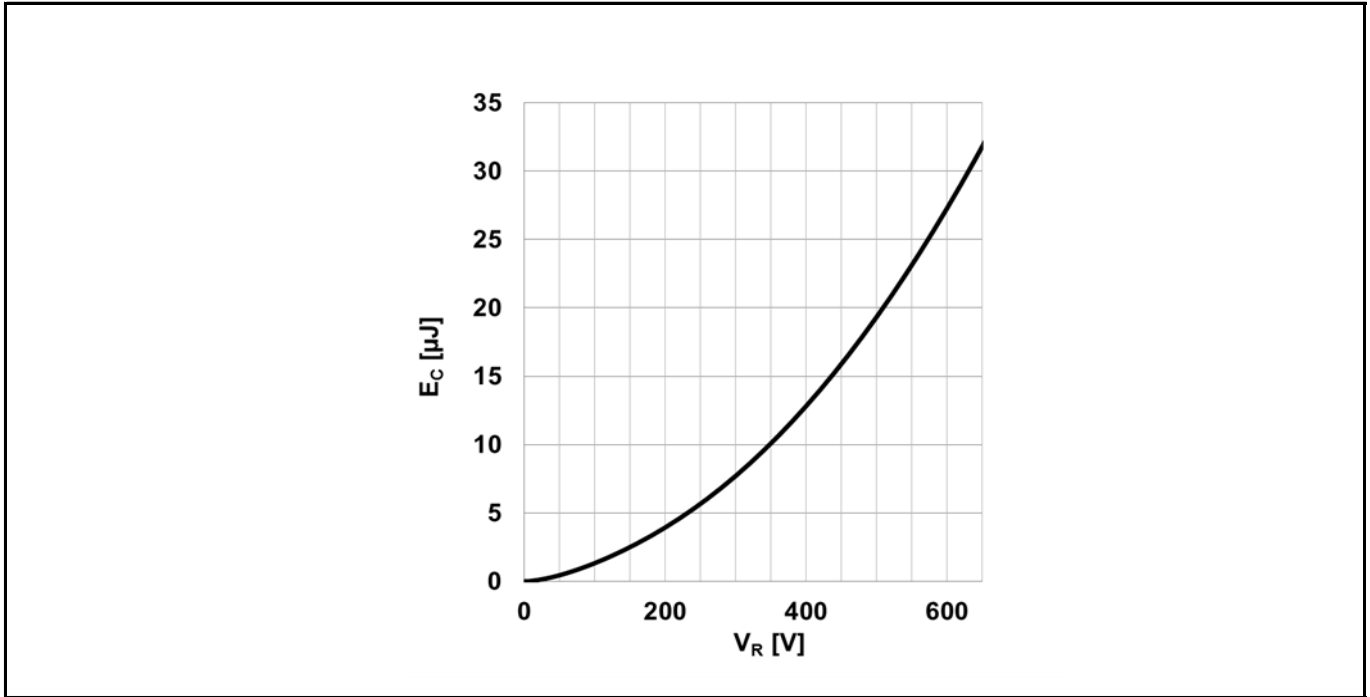


Figure 5 Typical capacitance stored energy;  $E_c = f(V_R)$

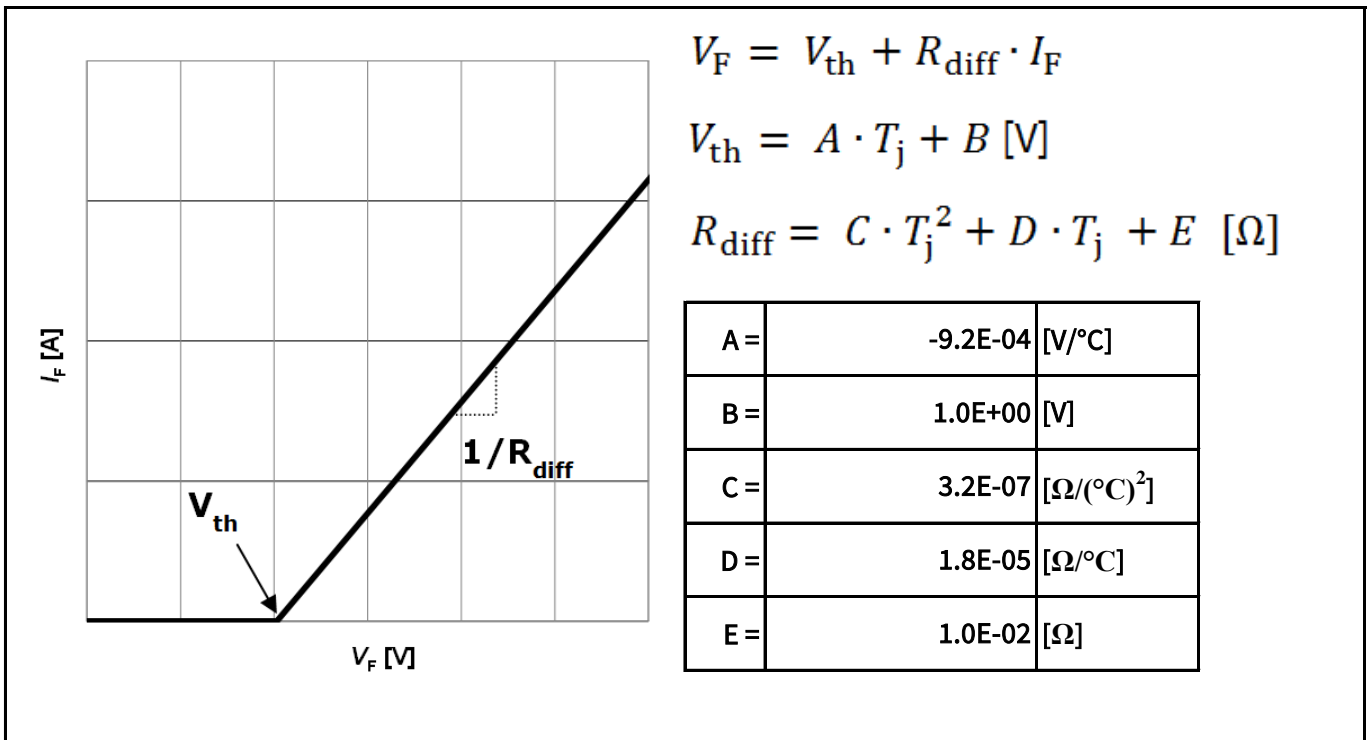


Figure 6 Simplified forward characteristics model  $V_F = f(I_F)$ ;  
-40°C <  $T_j$  < 175°C;  $I_F$  < 80 A



Package Outlines

5 Package Outlines

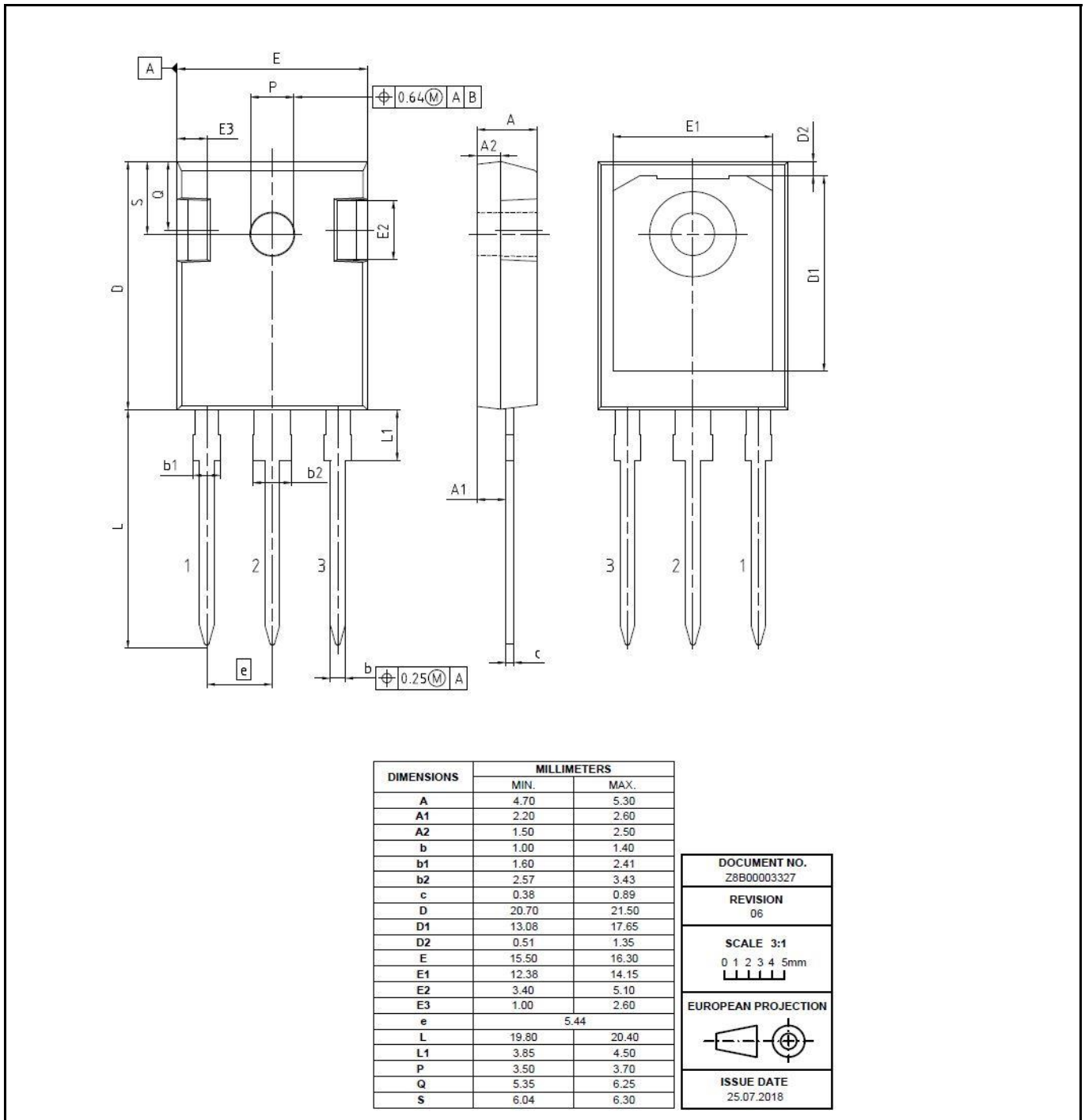


Figure 6 Package outline of PG-TO247-3-41 leaded (Dimensions in mm)

---

Revision History

**Revision History**

Document Version	Date of Release	Description of changes
V3.0	26.11.2018	1st release of Data Sheet

#### Trademarks

All referenced product or service names and trademarks are the property of their respective owners.

	<b>IMPORTANT NOTICE</b>
<b>Edition 2017-07-07</b>	
<b>Published by</b> Infineon Technologies AG 81726 München, Germany	The information given in this document shall in no event be regarded as a guarantee of conditions or characteristics ("Beschaffenhheitsgarantie"). For further information on the product, technology, delivery terms and conditions and prices please contact your nearest Infineon Technologies office ( <a href="http://www.infineon.com">www.infineon.com</a> ).
© 2017 Infineon Technologies AG. All Rights Reserved.	With respect to any examples, hints or any typical values stated herein and/or any information regarding the <b>WARNINGS</b>
<b>Do you have a question about this document?</b> Email: <a href="mailto:erratum@infineon.com">erratum@infineon.com</a>	Due to technical requirements products may contain dangerous substances. For information on the types in question please contact your nearest Infineon Technologies office. Including without limitation warranties of non-infringement of intellectual property rights of any third party.
<b>Document reference</b>	In addition, any information given in this document is subject to customer's compliance with its obligations stated in this document and any applicable legal requirements, norms and standards concerning Infineon Technologies' products and any use of the product of Infineon Technologies in customer's applications. Except as otherwise explicitly approved by Infineon Technologies in a written document signed by authorized representatives of Infineon Technologies, Infineon Technologies' products may not be used in any applications where a failure of the product or any consequences of the use thereof can reasonably be expected to result in personal injury. The data contained in this document is exclusively intended for technically trained staff. It is the responsibility of customer's technical departments to evaluate the suitability of the product for the intended application and the completeness of the product information given in this document with respect to such application.

Компания «Life Electronics» занимается поставками электронных компонентов импортного и отечественного производства от производителей и со складов крупных дистрибьюторов Европы, Америки и Азии.

С конца 2013 года компания активно расширяет линейку поставок компонентов по направлению коаксиальный кабель, кварцевые генераторы и конденсаторы (керамические, пленочные, электролитические), за счёт заключения дистрибьюторских договоров

Мы предлагаем:

- Конкурентоспособные цены и скидки постоянным клиентам.
- Специальные условия для постоянных клиентов.
- Подбор аналогов.
- Поставку компонентов в любых объемах, удовлетворяющих вашим потребностям.
- Приемлемые сроки поставки, возможна ускоренная поставка.
- Доставку товара в любую точку России и стран СНГ.
- Комплексную поставку.
- Работу по проектам и поставку образцов.
- Формирование склада под заказчика.
- Сертификаты соответствия на поставляемую продукцию (по желанию клиента).
- Тестирование поставляемой продукции.
- Поставку компонентов, требующих военную и космическую приемку.
- Входной контроль качества.
- Наличие сертификата ISO.

В составе нашей компании организован Конструкторский отдел, призванный помогать разработчикам, и инженерам.

Конструкторский отдел помогает осуществить:

- Регистрацию проекта у производителя компонентов.
- Техническую поддержку проекта.
- Защиту от снятия компонента с производства.
- Оценку стоимости проекта по компонентам.
- Изготовление тестовой платы монтаж и пусконаладочные работы.



Тел: +7 (812) 336 43 04 (многоканальный)  
Email: [org@lifeelectronics.ru](mailto:org@lifeelectronics.ru)