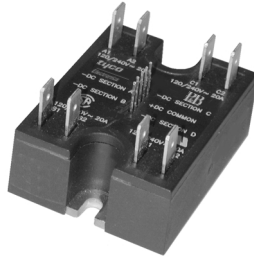


# SSRQ series

## Quad AC Output "Hockey Puck" Solid State Relay With Triac Outputs

US File E29244



Users should thoroughly review the technical data before selecting a product part number. It is recommended that users also seek out the pertinent approvals files of the agencies/laboratories and review them to ensure the product meets the requirements for a given application.

### Features

- Four independent AC output solid state relays in one standard package.
- 20A rms triac outputs.
- 4-15 VDC input control.
- Zero voltage and random voltage turn-on versions.
- 2500V rms optical isolation.
- Quick connect style terminals.

### Engineering Data

- Form:** 4 Form A (4 SPST-NO).  
**Duty:** Continuous.  
**Isolation:** 2500V rms input-to-output-to-ground.  
**Capacitance:** 10.0 pf maximum (input to output).  
**Temperature Range:**  
**Storage:** -40°C to +125°C  
**Operating:** -40°C to + 80°C  
**Case Material:** Plastic, UL rated 94V-0.  
**Case and Mounting:** Refer to outline dimension.  
**Termination:** Refer to outline dimension.  
**Approximate Weight:** 3.5 oz. (98g).

### Ordering Information

Sample Part Number ▶ **SSRQ -240 D 20**

- 1. Basic Series:** SSRQ = Quad output SSR - 4 SPST - NO
- 2. Line Voltage:** 240 = 24 - 280 VAC
- 3. Input Type & Voltage:** D = 4 - 15VDC, zero voltage turn-on types.  
R = 4 - 15VDC, random voltage turn-on types.
- 4. Maximum Switching Rating/Output:** 20 = .05 - 20A rms, mounted to heatsink. NOTE: 60A max. per package.
- 5. Options:** Blank = Zero voltage turn-on (all sections) Requires "D" input type above.  
R = Random voltage turn-on (all sections) Requires "R" input type above.

**Our authorized distributors are more likely to maintain the following items in stock for immediate delivery.**

SSRQ-240D20

### Input Specifications

| Parameter                                  | Conditions | Units | Zero V or Random V Turn-on Units |
|--------------------------------------------|------------|-------|----------------------------------|
| Control Voltage Range $V_{IN}$             | @ 25°C     | VDC   | 4-15                             |
| Must Operate Voltage $V_{INI(OP)}$ (Min.)  | @ 25°C     | VDC   | 4                                |
| Must Release Voltage $V_{INI(REL)}$ (Min.) | @ 25°C     | VDC   | 1                                |
| Input Current (Typ.)                       | @ 25°C     | mA DC | 12                               |
| Input Impedance (Nom.)                     | @ 25°C     | ohms  | 330                              |

**Output Specifications (@ 25° C, unless otherwise specified)**

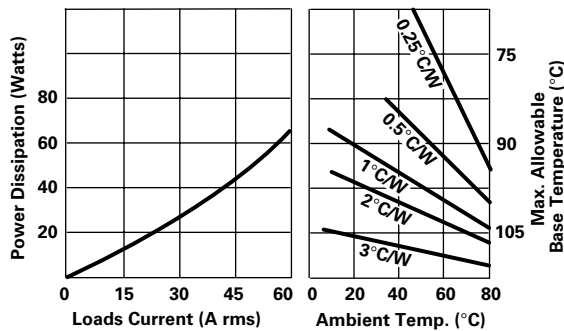
| Parameter                                                        | Conditions                                 | Units               |                                                                              |
|------------------------------------------------------------------|--------------------------------------------|---------------------|------------------------------------------------------------------------------|
| Load Voltage Range $V_L$                                         |                                            | V rms               | 24-280                                                                       |
| Repetitive Blocking Voltage (Min.)                               |                                            | V peak              | ±600                                                                         |
| Load Current Range $I_L^*$                                       | Resistive                                  | A rms               | .15-20                                                                       |
| Single Cycle Surge Current (Min.)                                |                                            | A peak              | 250                                                                          |
| Leakage Current (Off-State) (Max.)                               | $f = 60 \text{ Hz. } V_L = 280\text{Vrms}$ | mA rms              | 10                                                                           |
| On-State Voltage Drop (Max.)                                     | $I_L = \text{Max.}$                        | V peak              | 1.6                                                                          |
| Static dv/dt (Off-State) (Min.)                                  | $V_L = 280\text{Vrms}$                     | V/ $\mu\text{s}$    | 200                                                                          |
| Thermal Resistance, Junction to Case ( $R_{\theta J-C}$ ) (Max.) | All Sections On                            | °C/W                | 1.2                                                                          |
| Turn-On Time (Max.)                                              | $f = 60 \text{ Hz.}$                       | ms                  | 8.3 for Zero Voltage Turn-On Models<br>0.1 for Random Voltage Turn-On Models |
| Turn-Off Time (Max.)                                             | $f = 60 \text{ Hz.}$                       | ms                  | 8.3                                                                          |
| $I^2 t$ Rating                                                   | $t = 8.3 \text{ ms}$                       | A <sup>2</sup> Sec. | 260                                                                          |
| Load Power Factor Rating                                         | $I_L = \text{Max.}$                        |                     | 0.5 - 1.0                                                                    |

\*See Thermal Derating Curves. Note: While each output section is rated for a maximum of 20A, the maximum output per package is 60A.

**Electrical Characteristics (Thermal Derating Curves)**

**How To Use These Curves**

Knowing maximum load current and maximum ambient temperature, use derating curves to determine required heat sink and maximum allowable base plate temperature. On left hand power dissipation curve, locate the point corresponding to maximum load current. Extend a line to the right from that point to the intersection of vertical line on right hand chart corresponding to maximum ambient temperature. From heat sink curve, read directly or extrapolate required heat sink size. Extend the line farther to the right and read on the right hand scale the maximum allowable base plate temperature.



**Example #1:**

**Given:**  $I_L =$  Four 7.5A loads @ 60°C

**Find:** Minimum heatsink required

**Solution:** From Thermal Dissipation Graph

4 x 7.5A = 30A 4 sections ON

Heatsink = 2°C/W minimum

**Example #2:**

**Given:** SSRQ24020

**Find:** Maximum rating mounting to 1.0°C/W HS @ 60°C All sections ON

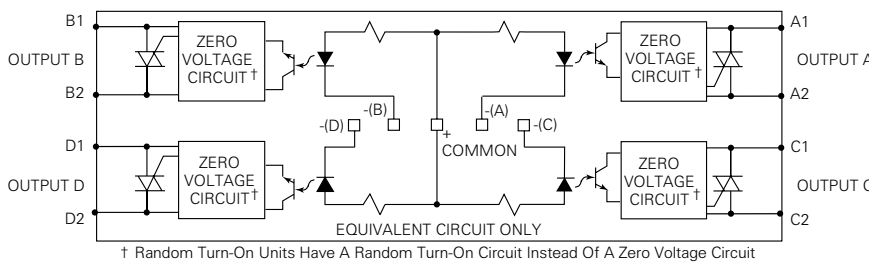
**Solution:** From Thermal Dissipation Graph

Rating mounted to 1.0°C/W HS @ 60°C = 36A total

9A for 4 Sections ON = 36A total

12A for 3 Sections ON = 36A total

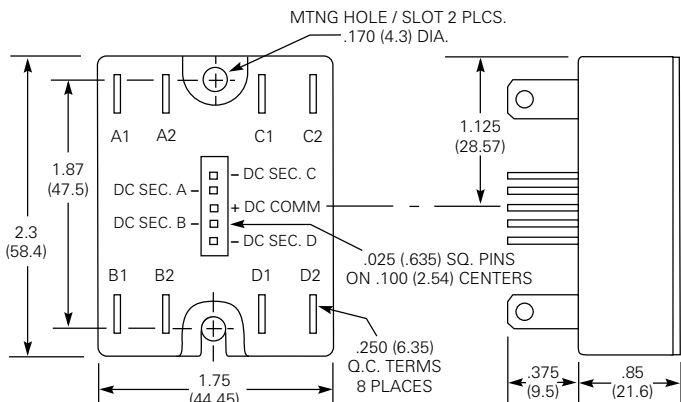
**Operating Diagram**



**Heatsink Recommendations**

- We recommend that solid state relay modules be mounted to a heatsink sufficient to maintain the module's base temperature at less than 85°C under worst case ambient temperature and load conditions.
- The heatsink mounting surface should be a smooth (30-40 micro-inch finish), flat (30-40 micro-inch flatness across mating area), un-painted surface which is clean and free of oxidation.
- An even coating of thermal compound (Dow Corning DC340 or equivalent) should be applied to both the heatsink and module mounting surfaces and spread to a uniform depth of .002" to eliminate all air pockets.
- The module should be mounted to the heatsink using two #10 screws.

**Outline Dimensions**



Input Terminals mate with the following connectors or equivalent:

**AMP P/N:** 103976-4

Consult your local distributor for connectors.

Компания «Life Electronics» занимается поставками электронных компонентов импортного и отечественного производства от производителей и со складов крупных дистрибьюторов Европы, Америки и Азии.

С конца 2013 года компания активно расширяет линейку поставок компонентов по направлению коаксиальный кабель, кварцевые генераторы и конденсаторы (керамические, пленочные, электролитические), за счёт заключения дистрибьюторских договоров

Мы предлагаем:

- Конкурентоспособные цены и скидки постоянным клиентам.
- Специальные условия для постоянных клиентов.
- Подбор аналогов.
- Поставку компонентов в любых объемах, удовлетворяющих вашим потребностям.
- Приемлемые сроки поставки, возможна ускоренная поставка.
- Доставку товара в любую точку России и стран СНГ.
- Комплексную поставку.
- Работу по проектам и поставку образцов.
- Формирование склада под заказчика.
- Сертификаты соответствия на поставляемую продукцию (по желанию клиента).
- Тестирование поставляемой продукции.
- Поставку компонентов, требующих военную и космическую приемку.
- Входной контроль качества.
- Наличие сертификата ISO.

В составе нашей компании организован Конструкторский отдел, призванный помогать разработчикам, и инженерам.

Конструкторский отдел помогает осуществить:

- Регистрацию проекта у производителя компонентов.
- Техническую поддержку проекта.
- Защиту от снятия компонента с производства.
- Оценку стоимости проекта по компонентам.
- Изготовление тестовой платы монтаж и пусконаладочные работы.



Тел: +7 (812) 336 43 04 (многоканальный)

Email: [org@lifeelectronics.ru](mailto:org@lifeelectronics.ru)