

NetKey™ Cabling System



PANDUIT™

building a smarter,
unified business foundation
Connect. Manage. Automate.

NetKey™ Cabling System

The NetKey™ Copper and Fibre Cabling System provides a complete, standards compliant cabling infrastructure solution for voice, data and video applications. NetKey™ Modules feature the universal “keystone” design and are compatible with a wide assortment of modular patch panels, faceplates and surface mount boxes. When teamed with complementary Panduit products, the NetKey™ solutions cover all your needs from the telecommunication room to the work area with the proven innovation and quality you depend on from Panduit.



NetKey™ Copper and Fibre Cable

Page 4



NetKey™ Modules

Pages 5, 7 and 15



NetKey™ Patch Panels

Page 10





NetKey™ Copper and Fibre Patch Cords

Pages 5, 8 and 9



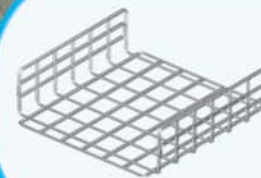
NetKey™ Faceplates and Surface Mount Boxes

Pages 11 – 14



Media Distribution System

Pages 16 – 20



GridRunner™ Underfloor Cable Routing System

Page 21



Racks and Cable Management

Page 22



Identification and Labelling Systems

Page 23

NETKEY™ Copper Cable

- Meets ISO/IEC Category 6/Class E and Category 5e/Class D performance requirements
- Descending length cable markings enable easy identification of remaining cable
- Third party verified
- 305m (1,000 ft.) in an easy-pay-out box



NUC6C04BU-CE



NUC5C04BU-CE

| Part Number | Description |
|---|---|
| NetKey™ Category 6 UTP Copper Cable | |
| NUL6C04BU-CE^^ | Category 6, low smoke zero halogen (LSZH), 4-pair, UTP, blue copper cable. |
| NUC6C04BU-CE^ | Category 6, PVC (CM), 4-pair, UTP, blue copper cable. |
| NetKey™ Category 5e UTP Copper Cable | |
| NUL5C04BU-CE^^ | Category 5e, low smoke zero halogen (LSZH), 4-pair, UTP, blue copper cable. |
| NUC5C04BU-CE^ | Category 5e, PVC (CM), 4-pair, UTP, blue copper cable. |

^For standard colours replace colour suffix BU (Blue) with IG (International Grey).

^^ For standard colours replace colour suffix BU (Blue) with WH (White) or VL (Violet).

Fibre Optic Distribution Cable

- Used in intrabuilding backbone, building backbone, and horizontal installations for low smoke zero halogen (LSZH), and general-purpose environments
- Used in intrabuilding backbone, building backbone, and horizontal installations for riser (OFNR), and general-purpose environments
- Singlemode (OS1) and multimode (OM1, OM2, OM2+ 10Gig™ 150, and OM3 10Gig™ 300 850nm laser optimised) fibre available
- Sheath markings provide positive identification, quality, traceability and length verification
- Cable design and flexible buffer tubes allow for quick breakout and ease of routing
- 900µm standards-based colour-coded buffer coating protects fibres during handling and allows for easy identification and stripping
- Opti-Core™ 10Gig™ Cable is designed to support network transmission speeds up to 10 Gb/s for link lengths up to 300 metres with an 850nm source per IEEE 802.3ae 10 GbE Standard; backward compatible for use with all 50/125µm system requirements
- 10Gig™ Fibre Optic Indoor/Outdoor Cable includes 10Gig™ 300 OM3 Cable for 300 metre reach requirements and also 10Gig™ 150 OM2+ Cable for 150 metre reach requirements



Fibre Optic LSZH Distribution Cable

| Part Number | Description |
|-------------|---|
| FPDL908 | 8-fibre 9/125µm (OS1) singlemode low smoke zero halogen rated distribution cable. |
| FPDL912 | 12-fibre 9/125µm (OS1) singlemode low smoke zero halogen rated distribution cable. |
| FPDL608 | 8-fibre 62.5/125µm (OM1) multimode low smoke zero halogen rated distribution cable. |
| FPDL612 | 12-fibre 62.5/125µm (OM1) multimode low smoke zero halogen rated distribution cable. |
| FPDL508 | 8-fibre 50/125µm (OM2) multimode low smoke zero halogen rated distribution cable. |
| FPDL512 | 12-fibre 50/125µm (OM2) multimode low smoke zero halogen rated distribution cable. |
| FQDLX08 | 8-fibre 10Gig™ 50/125µm (OM3) multimode low smoke zero halogen rated distribution cable. |
| FQDLX12 | 12-fibre 10Gig™ 50/125µm (OM3) multimode low smoke zero halogen rated distribution cable. |

These products are available for sale in the EMEA region only. Lengths and availability: Opti-Core™ Fibre Optic Distribution Cable is available in 10 metre increments greater than 1000 metres. Other custom length options are available that include jacket colours, hybrid constructions (multiple fibre types within a single cable), flame ratings, subunit counts, amoring, indoor/outdoor designs, premium optical performance grades and ribbonised constructions. Contact Customer Service (+44 20 8601 7200) for available configurations and lead times.

NetKey™ Copper Category 6, 5e and 3 Jack Modules

- Meet all industry performance standards for Category 6, 5e and 3
- Punchdown jack modules are 100% performance tested and individually serialized for future traceability
- Snap in and out of keystone openings for easy moves, adds and changes
- Universal label includes T568A and T568B wiring schemes



NK688MIW
NKP5E88MIW



NK688MIW-Q
NKP5E88MIW-Q



NK5E88MIWY



NK5E88MIW-Q



NK388MIWY



NK366UMIWY



NK366MIWY

| Part Number | Description | Colour |
|--|---|-----------|
| NetKey™ Category 6 UTP Jack Modules* | | |
| NK688MIW | Category 6, 8-position, 8-wire, keystone punchdown jack module. | Off White |
| NK688MIW-Q | Convenience pack of 25, Category 6, 8-position, 8-wire, keystone punchdown jack modules. | Off White |
| NetKey™ Category 5e UTP Jack Modules* | | |
| NKP5E88MIW | Category 5e, 8-position, 8-wire, keystone punchdown jack module. | Off White |
| NKP5E88MIW-Q | Convenience pack of 25, Category 5e, 8-position, 8-wire, keystone punchdown jack modules. | Off White |
| NK5E88MIW | Category 5e, 8-position, 8-wire, keystone leadframe jack module. | Off White |
| NK5E88MIW-Q | Convenience pack of 25, Category 5e, 8-position, 8-wire, keystone leadframe jack modules. | Off White |
| NetKey™ Category 3 UTP Jack Modules** | | |
| NK388MIWY | Category 3, 8-position, 8-wire, keystone leadframe jack module. | Off White |
| NK366UMIWY | Category 3, 6-position, 6-wire, keystone leadframe jack module. Termination cap colour-coded to USOC wiring scheme. | Off White |
| NK366MIWY | Category 3, 6-position, 6-wire, keystone leadframe jack module. | Off White |

*For standard colours replace colour suffix with AW (Arctic White), IW (Off White), EI (Electric Ivory), IG (International Grey), WH (White), BL (Black), BU (Blue), RD (Red), YL (Yellow), GR (Green), OR (Orange) or VL (Violet).

To order convenience package of 25 jack modules, add -Q to end of part number.

** For standard colours replace colour suffix with IW (Off White), EI (Electric Ivory), IG (International Grey), WH (White) or BL (Black).

Termination tools found on page 13.

NetKey™ Copper UTP Patch Cords

- Meet all industry performance standards for Category 6 and 5e
- 100% performance tested
- Available in a variety of colours and lengths for design flexibility



NK6PC^*Y



NK5EPC^*Y

| Part Number | Description |
|--------------------|---|
| Category 6 | |
| NK6PC^*M*Y | Category 6, UTP patch cord with modular plugs on each end. |
| Category 5e | |
| NK5EPC^*M*Y | Category 5e, UTP patch cord with modular plugs on each end. |

^Available in 1, 2, 3, 4, 5 metre lengths.

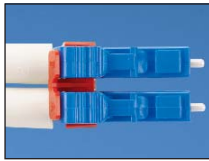
*For standard colours other than Off White, add suffix BU (Blue), RD (Red), YL (Yellow) or GR (Green) before Y in the part number. For example, the part number of a blue, Category 6, 5-metre patch cord is NK6PC5MBUY.

NetKey™ Fibre Optic Connectors

- Meets TIA/EIA-568-C.3 requirements
- Insertion loss: 0.1dB typical (multimode), 0.2dB typical (singlemode)
- Return loss: >20dB (multimode), >40dB (singlemode)
- Each duplex plug includes housing, insert, two ferrule assemblies, two crimp sleeves, one boot for 3mm jacketed cable and two dust caps



NKFLCSMWH



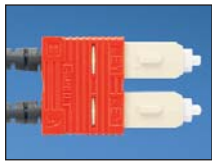
NKFLCCLIP-L



NKFSCMBL



NKFSCMPC5BL



NKFSCCLIP-L



NKFSTMABL^^



NKFSTMPC6EI

| Part Number | Description |
|---|--|
| LC Connectors – Pot and Polish Termination | |
| NKFLCSMWH | LC 62.5/125µm multimode simplex connector. EI (Electric Ivory) body, WH (White) boot. |
| NKFLCSMBL | LC 50/125µm multimode simplex connector. EI (Electric Ivory) body, BL (Black) boot. |
| NKFLCSMAQ | LC 50/125µm OM3/OM4 multimode simplex connector. EI (Electric Ivory) body, AQ (Aqua) boot. |
| NKFLCSSWH | LC singlemode simplex connector. BU (Blue) body, WH (White) boot. |
| NKFLCCLIP-L | LC duplex clip, (Rd) Red. |
| SC Connectors – Pot and Polish Termination | |
| NKFSCMWH | SC 62.5/125µm multimode simplex connector. EI (Electric Ivory) body, WH (White) boot. |
| NKFSCMBL | SC 50/125µm multimode simplex connector. EI (Electric Ivory) body, BL (Black) boot. |
| NKFSCMAQ | SC 50/125µm OM3/OM4 multimode simplex connector. EI (Electric Ivory) body, AQ (Aqua) boot. |
| NKFSCSWH | SC singlemode simplex connector. BU (Blue) body, WH (White) boot. |
| NKFSCCLIP-L | SC Duplex Clip, (Rd) Red. |
| SC Connectors – Pre-Polished Cam Termination | |
| NKFSCMPC6EI | SC OptiCam™ Composite Ferrule 62.5/125µm multimode simplex connector, Electric Ivory. |
| NKFSCMPC5BL | SC OptiCam™ Composite Ferrule 50/125µm multimode simplex connector, Black. |
| ST Connectors – Pot and Polish Termination | |
| NKFSTMABL^^ | ST multimode connector with Black boot (62.5/125µm or 50/125µm). |
| NKFSTSABU | ST singlemode connector with Blue boot. |
| ST Connectors – Pre-polish Cam Termination | |
| NKFSTMPC6EI | ST OptiCam™ Composite Ferrule 62.5/125µm multimode simplex connector, Electric Ivory. |
| NKFSTMPC5BL | ST OptiCam™ Composite Ferrule 50/125µm multimode simplex connector, Black. |

^^NKFSTMABL also available with red boot, replace BL (Black) in part number with RD (Red).

NetKey™ Fibre Enclosures

- Factory configured with 6 or 12 duplex LC or SC adapters for fast and easy cabling and installation
- Slide-out drawer slides forward a full 300mm for service access to all fibre terminations, connections and/or splices
- Supports both field termination via pot-and-polish using Panduit™ NetKey™ Connectors, or fusion splicing with appropriate slack storage and cable management provisions
- Simple two-piece, all-metal body construction for easy and economical installation with no loose components to misplace; improved protection over plastic fibre drawers



NKFD1W12EIDLC

| Part Number | Description |
|--------------------------------|--|
| OM1 Duplex Adapters | |
| NKFD1W12EIDSC* | Pre-loaded fibre drawer with 12 SC duplex adapters for 62.5/125µm (OM1) multimode fibre. |
| NKFD1W24EIDLC** | Pre-loaded fibre drawer with 24 LC duplex adapters for 62.5/125µm (OM1) multimode fibre. |
| OM2 Duplex Adapters | |
| NKFD1W12BLDSC* | Pre-loaded fibre drawer with 12 SC duplex adapters for 50/125µm (OM2) multimode fibre. |
| NKFD1W24BLDLC** | Pre-loaded fibre drawer with 24 LC duplex adapters for 50/125µm (OM2) multimode fibre. |
| OM3/OM4 Duplex Adapters | |
| NKFD1W12AQDSC* | Pre-loaded fibre drawer with 12 SC duplex adapters for 50/125µm (OM3/OM4) multimode fibre. |
| NKFD1W24AQDLC** | Pre-loaded fibre drawer with 24 LC duplex adapters for 50/125µm (OM3/OM4) multimode fibre. |
| OS1/OS2 Duplex Adapters | |
| NKFD1W12BUDSCZ* | Pre-loaded fibre drawer with 12 SC duplex adapters for 9/125µm (OS1/OS2) multimode fibre. |
| NKFD1W24BUDLCZ** | Pre-loaded fibre drawer with 24 LC duplex adapters for 9/125µm (OS1/OS2) multimode fibre. |

*For 6 adapters per enclosure, replace 12 in part number with 6.

**For 12 adapters per enclosure, replace 24 in part number with 12.

NetKey™ Fibre Optic Adapters



NKDLCMIW



NKSCMZIW



NKSTMIW



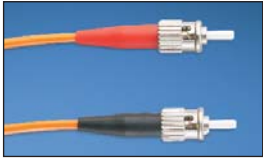
NKMJMIW

| Part Number | Description | Colour |
|----------------------|---|-----------|
| LC Adapters | | |
| NKDLCMIW | Keystone module supplied with one LC Sr./Jr. SFF multimode duplex adapter with phosphor bronze split sleeves. | Off White |
| NKDLCMZIW | Keystone module supplied with one LC Sr./Jr. SFF singlemode duplex adapter with zirconia ceramic split sleeves. | Off White |
| SC Adapters | | |
| NKSCMIW | Keystone module supplied with one SC multimode simplex adapter with phosphor bronze split sleeve. | Off White |
| NKSCMZIW | Keystone module supplied with one SC singlemode simplex adapter with zirconia ceramic split sleeve. | Off White |
| ST Adapters | | |
| NKSTMIW | Keystone module supplied with one ST multimode simplex adapter with phosphor bronze split sleeve. | Off White |
| MT-RJ Adapter | | |
| NKMJMIW | MT-RJ multimode duplex keystone adapter module. | Off White |

For standard colours other than IW (Off White), replace suffix with BL (Black), EI (Electric Ivory), IG (International Grey) or WH (White).

NetKey™ Fibre Optic Patch Cords and Pigtails

- Compliant with TIA/EIA 568-C.3-1 and ISO/IEC 11801, IEC-61754-7 (international) and TIA-604-5 (FOCIS-5)
- Patch cords and pigtails include OM3 fibre or OM1, OM2, or OS1 fibre in 900µm tight-buffered fibre, 1.6mm or 3.0mm duplex zipcord jacketed cable or 1.8mm duplex zipcord jacketed cable
- 100% performance tested assures that patch cords and pigtails are standard compliant
- Q.C. identification label quality control reference provides lifetime traceability of test data



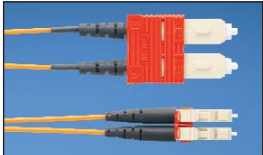
ST to ST Patch Cord



SC to SC Patch Cord



LC to LC Patch Cord

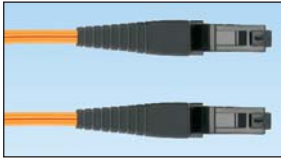


SC to LC Patch Cord

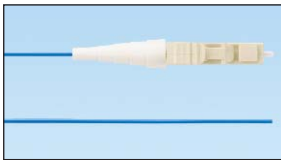
| Part Number* | Description |
|-----------------------------|--|
| ST to ST Patch Cords | |
| NKF6GL022-2M01 | ST to ST patch cord, OM1, LSZH, duplex (3 mm jacket). |
| NKF5GL022-2M01 | ST to ST patch cord, OM2, LSZH, duplex (3 mm jacket). |
| NKFXGL022-2M01 | ST to ST patch cord, OM3, LSZH, duplex (3 mm jacket). |
| NKF9GL022-2M01 | ST to ST patch cord, singlemode, LSZH, duplex (3 mm jacket). |
| SC to SC Patch Cords | |
| NKF6GL02S-SM01 | SC to SC patch cord, OM1, LSZH, duplex (3 mm jacket). |
| NKF5GL02S-SM01 | SC to SC patch cord, OM2, LSZH, duplex (3 mm jacket). |
| NKFXGL02S-SM01 | SC to SC patch cord, OM3, LSZH, duplex (3 mm jacket). |
| NKF9GL02S-SM01 | SC to SC patch cord, singlemode, LSZH, duplex (3 mm jacket). |
| LC to LC Patch Cords | |
| NKF6EL02L-LM01 | LC to LC patch cord, OM1, LSZH, duplex (1.6 mm jacket). |
| NKF5EL02L-LM01 | LC to LC patch cord, OM2, LSZH, duplex (1.6 mm jacket). |
| NKFXEL02L-LM01 | LC to LC patch cord, OM3, LSZH, duplex (1.6 mm jacket). |
| NKF9EL02L-LM01 | LC to LC patch cord, singlemode, LSZH, duplex (1.6 mm jacket). |
| SC to LC Patch Cords | |
| NKF6EL02S-LM01 | SC to LC patch cord, OM1, LSZH, duplex (1.6 mm jacket). |
| NKF5EL02S-LM01 | SC to LC patch cord, OM2, LSZH, duplex (1.6 mm jacket). |
| NKFXEL02S-LM01 | SC to LC patch cord, OM3, LSZH, duplex (1.6 mm jacket). |
| NKF9EL02S-LM01 | SC to LC patch cord, singlemode, LSZH, duplex (1.6 mm jacket). |
| ST to SC Patch Cords | |
| NKF6GL022-SM01 | ST to SC patch cord, OM1, LSZH, duplex (3 mm jacket). |
| NKF5GL022-SM01 | ST to SC patch cord, OM2, LSZH, duplex (3 mm jacket). |
| NKFXGL022-SM01 | ST to SC patch cord, OM3, LSZH, duplex (3 mm jacket). |
| NKF9GL022-SM01 | ST to SC patch cord, singlemode, LSZH, duplex (3 mm jacket). |

*For standard metre lengths other than 1 metre (2, 3, 5 or 10), change the length designation in the part number to the desired length. For example, the part number for a 2 metre, ST to ST, OM1, LSZH, duplex patch cord is NKF6GL022-2M02.

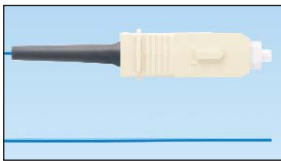
NetKey™ Fibre Optic Patch Cords and Pigtails (continued)



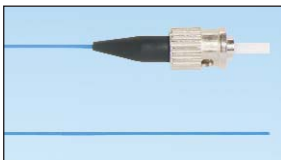
MT-RJ to MT-RJ Patch Cord



LC to Pigtail



SC to Pigtail



ST to Pigtail

| Part Number* | Description |
|--------------|-------------|
|--------------|-------------|

MT-RJ to MT-RJ Patch Cords

| | |
|----------------|---|
| NKF6FL02F-FM01 | MT-RJ to MT-RJ patch cord, OM1, LSZH, duplex (1.8 mm jacket). |
| NKF5FL02F-FM01 | MT-RJ to MT-RJ patch cord, OM2, LSZH, duplex (1.8 mm jacket). |
| NKFXFL02F-FM01 | MT-RJ to MT-RJ patch cord, OM3, LSZH, duplex (1.8 mm jacket). |

LC to MT-RJ Patch Cords

| | |
|----------------|--|
| NKF6FL02L-FM01 | LC to MT-RJ patch cord, OM1, LSZH, duplex (1.8 mm jacket). |
| NKF5FL02L-FM01 | LC to MT-RJ patch cord, OM2, LSZH, duplex (1.8 mm jacket). |
| NKFXFL02L-FM01 | LC to MT-RJ patch cord, OM3, LSZH, duplex (1.8 mm jacket). |

ST to MT-RJ Patch Cords

| | |
|----------------|--|
| NKF6FL022-FM01 | ST to MT-RJ patch cord, OM1, LSZH, duplex (1.8 mm jacket). |
| NKF5FL022-FM01 | ST to MT-RJ patch cord, OM2, LSZH, duplex (1.8 mm jacket). |
| NKFXFL022-FM01 | ST to MT-RJ patch cord, OM3, LSZH, duplex (1.8 mm jacket). |

SC to MT-RJ Patch Cords

| | |
|----------------|--|
| NKF6FL02S-FM01 | SC to MT-RJ patch cord, OM1, LSZH, duplex (1.8 mm jacket). |
| NKF5FL02S-FM01 | SC to MT-RJ patch cord, OM2, LSZH, duplex (1.8 mm jacket). |
| NKFXFL02S-FM01 | SC to MT-RJ patch cord, OM3, LSZH, duplex (1.8 mm jacket). |

LC Pigtails

| | |
|----------------|---|
| NKF6BN011-NM01 | LC to Pigtail, OM1, simplex, 900um buffered fibre. |
| NKF5BN011-NM01 | LC to Pigtail, OM2, simplex, 900um buffered fibre. |
| NKFXBN011-NM01 | LC to Pigtail, OM3, simplex, 900um buffered fibre. |
| NKF9BN011-NM01 | LC to Pigtail, singlemode, simplex, 900um buffered fibre. |

SC Pigtails

| | |
|----------------|---|
| NKF6BN013-NM01 | SC to Pigtail, OM1, simplex, 900um buffered fibre. |
| NKF5BN013-NM01 | SC to Pigtail, OM2, simplex, 900um buffered fibre. |
| NKFXBN013-NM01 | SC to Pigtail, OM3, simplex, 900um buffered fibre. |
| NKF9BN013-NM01 | SC to Pigtail, singlemode, simplex, 900um buffered fibre. |

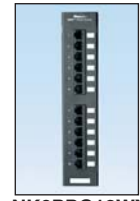
ST Pigtails

| | |
|----------------|---|
| NKF6BN012-NM01 | ST to Pigtail, OM1, simplex, 900um buffered fibre. |
| NKF5BN012-NM01 | ST to Pigtail, OM2, simplex, 900um buffered fibre. |
| NKFXBN012-NM01 | ST to Pigtail, OM3, simplex, 900um buffered fibre. |
| NKF9BN012-NM01 | ST to Pigtail, singlemode, simplex, 900um buffered fibre. |

*For standard metre lengths other than 1 metre (2, 3, 5 or 10), change the length designation in the part number to the desired length. For example, the part number for a 2 metre, ST to ST, OM1, LSZH, duplex patch cord is NKF6GL022-2M02.

NetKey™ Patch Panels

- Mount to standard TIA/EIA 19" racks
- Punchdown patch panels meet all industry performance standards for Category 6 and 5e
- Modular patch panels accept all NetKey™ Modules
- Optional angled versions available for high density installations
- Strain relief bars assist in cable management and bend radius control
- Filler panels reserve space for future use and direct airflow



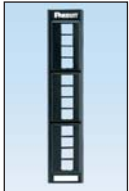
NK6PPG12WY
NK5EPPG12WY



NK6PPG24Y
NK5EPPG24Y



NK6PPG48Y
NK5EPPG48Y



NKFP12W



NKFP24Y



NKFP48Y



NKPPA24FMY



NKPPA48FMY



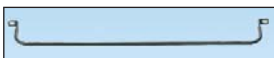
NKMP24Y



NKMP48Y



WB89D



SRB19BLY



SRBM19BLY



TLBP1R-V



TLBP2R-V



CPAF2BLY

| Part Number | Description |
|-------------|-------------|
|-------------|-------------|

Punchdown Patch Panels*

Category 6

| | |
|------------|--|
| NK6PPG12WY | Category 6, 12-port punchdown patch panel. Mounts to wall with standard 89D bracket (WB89D). |
| NK6PPG24Y | Category 6, 24-port punchdown patch panel, 1 RU. |
| NK6PPG48Y | Category 6, 48-port punchdown patch panel, 2 RU. |

Category 5e

| | |
|-------------|---|
| NK5EPPG12WY | Category 5e, 12-port punchdown patch panel. Mounts to wall with standard 89D bracket (WB89D). |
| NK5EPPG24Y | Category 5e, 24-port punchdown patch panel, 1 RU. |
| NK5EPPG48Y | Category 5e, 48-port punchdown patch panel, 2 RU. |

*Punchdown patch panels are colour-coded for T568A and T568B wiring schemes. Punchdown tools found on page 13.

Modular Patch Panels

| | |
|--------------|--|
| NKFP12W | 12-port modular patch panel. Mounts to wall with standard 89D bracket (WB89D). |
| NKFP24Y | 24-port modular patch panel, 1 RU. |
| NKFP48Y | 48-port modular patch panel, 2 RU. |
| NKFP24KSRBSY | 24-port modular patch panel with strain relief bar, 1 RU. |
| NKFP48KSRBSY | 48-port modular patch panel with strain relief bar, 2 RU. |

Flush Mount Patch Panels

| | |
|------------|---|
| NKPPA24FMY | 24-port flush mount angled modular patch panel, 1 RU. |
| NKPPA48FMY | 48-port flush mount angled modular patch panel, 2 RU. |
| NKPP24FMY | 24-port flush mount modular patch panel, 1 RU. |
| NKPP48FMY | 48-port flush mount modular patch panel, 2 RU. |

All Metal Patch Panels

| | |
|---------|--|
| NKMP24Y | 24-port all metal modular patch panel, 1 RU. |
| NKMP48Y | 48-port all metal modular patch panel, 2 RU. |

Wall Mount Bracket

| | |
|-------|---|
| WB89D | Wall mount bracket. Ideal for use with 12-port punchdown or modular patch panels. |
|-------|---|

Strain Relief Bars

| | |
|-------------|---|
| SRB19BLY | Strain relief bar extends 50mm from standard 19" rack for additional cable support. |
| SRBM19BLY | Strain relief bar and Tak-Ty™ Hook & Loop Cable Ties for additional cable support. |
| SRBS19BL-XY | Straight strain relief bar. |

Filler Panels

| | |
|----------|---|
| TLBP1S-V | 1 RU tool-less filler panel, 9.52mm (3/8 in.) square holes. |
| TLBP1R-V | 1 RU tool-less filler panel, M5 (#10) or M6 (#12) round tapped holes. |
| TLBP2S-V | 2 RU tool-less filler panel, 9.52mm (3/8 in.) square holes. |
| TLBP2R-V | 2 RU tool-less filler panel, M5 (#10) or M6 (#12) round tapped holes. |
| CPAF1BLY | 1 RU angled filler panel. |
| CPAF2BLY | 2 RU angled filler panel. |

NetKey™ Faceplates

- Accept all NetKey™ Modules
- Available in a variety of port densities



NK6CSAW-X



NKFPLUKF2SAW



NKFPLUKF4SAW



NK2HSFAWY



NK4HSFAWY

- Optional labels for easy port identification

| Part Number | Description | Colour |
|----------------|--|--------------|
| UK | | |
| NK6CSAW-X | Single gang, 25.4mm x 32mm, shuttered adapter. Compatible with LJU6C frame. Accepts one NetKey™ Module. | Arctic White |
| NKFPLUKF2SAW | Single gang, 86mm x 86mm, shuttered faceplate with label and icon slots. Accepts two NetKey™ Modules. Includes two M3.5-0.5 x 30mm panhead mounting screws. | Arctic White |
| NKFPLUKF4SAW | Single gang, 86mm x 86mm, shuttered faceplate with label and icon slots. Accepts four NetKey™ Modules. Includes two M3.5-0.5 x 30mm panhead mounting screws. | Arctic White |
| Italian | | |
| NK2HSFAWY | Single gang, horizontal, sloped faceplate with labels. Accepts two NetKey™ Modules. | Arctic White |
| NK4HSFAWY | Single gang, horizontal, sloped faceplate with labels. Accepts four NetKey™ Modules. | Arctic White |

NetKey™ Faceplate Kits



NKUKS2AW



NKUKS4AW-2G



NKUKS2SAW



NKUKS4SAW-2G

| Part Number | Description | Colour |
|--------------|--|--------------|
| UK | | |
| NKUKS2AW | Single gang, sloped faceplate kit with labels. Kit includes one 86 x 86mm faceplate frame and sloped insert. Accepts two NetKey™ Modules. | Arctic White |
| NKUKS4AW-2G | Double gang, sloped faceplate kit with labels. Kit includes one 146mm x 86mm faceplate frame and two sloped inserts. Accepts four NetKey™ Modules. | Arctic White |
| NKUKS2SAW | Single gang, sloped, shuttered faceplate kit with labels. Kit includes one 86mm x 86mm faceplate frame and one sloped, shuttered insert. Accepts two NetKey™ Modules. | Arctic White |
| NKUKS4SAW-2G | Double gang, sloped, shuttered faceplate kit with labels. Kit includes one 146mm x 86mm faceplate frame and two sloped, shuttered inserts. Accepts four NetKey™ Modules. | Arctic White |

NetKey™ Faceplate Kits (Continued)



NKFS2AW



NKFS2SAW



NKAGS2AW



NKAGS2SAW



NKDS2EW



NKDS2SEW



NKLK66S2EW



NKLK66S2SEW



NKFD66S2SEW



NKLKCLS2EW

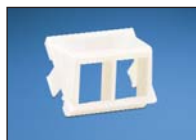


NKLKCLS2SEW

| Part Number | Description | Colour |
|--|---|----------------|
| French, Spanish, Belgian and Portuguese | | |
| NKFS2AW | Single gang, sloped faceplate kit. Kit includes one 45mm x 45mm faceplate frame and one sloped insert. Accepts two NetKey™ Modules. | Arctic White |
| NKFS2SAW | Single gang, sloped, shuttered faceplate kit. Kit includes one 45mm x 45mm faceplate frame and one sloped, shuttered insert. Accepts two NetKey™ Modules. | Arctic White |
| German | | |
| NKAGS2AW | Single gang, sloped faceplate kit with labels. Kit includes one 50mm x 50mm faceplate frame and one sloped insert. Accepts two NetKey™ Modules. | Arctic White |
| NKAGS2SAW | Single gang sloped, shuttered faceplate kit with labels. Kit includes one 50mm x 50mm faceplate frame and one sloped, shuttered insert. Accepts two NetKey™ Modules. | Arctic White |
| Danish | | |
| NKDS2EW | Single gang, sloped, faceplate kit with labels. Kit includes one 71.1mm x 50.4mm faceplate frame and one sloped insert. Accepts two NetKey™ Modules. | European White |
| NKDS2SEW | Single gang, sloped, shuttered faceplate kit with labels. Kit includes one 71.1mm x 50.4mm faceplate frame and one sloped insert. Accepts two NetKey™ Modules. | European White |
| NKLK66S2EW | Single gang, sloped, faceplate kit. Compatible with LK Opus 66* frame. Kit includes one 58.8mm x 58.8mm faceplate frame and one sloped insert. Accepts two NetKey™ Modules. | European White |
| NKFD66S2SEW | Single gang, sloped, shuttered faceplate kit. Compatible with LK Opus 66* frame. Kit includes one 58.8mm x 58.8mm faceplate frame and one sloped, shuttered insert. Ideal for in-wall and surface mount box installations. Accepts two NetKey™ Modules. | European White |
| NKLK66S2SEW | Single gang, sloped, shuttered faceplate kit. Compatible with LK Opus 66* frame. Kit includes one 58.8mm x 58.8mm faceplate frame and sloped, shuttered insert. Accepts two NetKey™ Modules. | European White |
| NKLKCLS2EW | Single gang, sloped, faceplate kit with labels. Compatible with LK Clic'line* frame. Kit includes one 71.3mm x 45mm faceplate frame and one sloped insert. Accepts two NetKey™ Modules. | European White |
| NKLKCLS2SEW | Single gang, sloped, shuttered, faceplate kit with labels. Compatible with LK Clic'line* frame. Kit includes one 71.3mm x 45mm faceplate frame and one sloped, shuttered insert. Accepts two NetKey™ Modules. | European White |

*Opus 66 and Clic'line are trademarks of Lauritz Knudsen.

NetKey™ Inserts, Frames and Adapter



NKHS2AW-X



NKHS2SAW-X



CBUKAWY



CBUKAW-2GY



CBAGAW



FCFPAW



CBFAW

| Part Number | Description | Colour |
|----------------|---|--------------|
| Inserts | | |
| NKHS2AW-X | 1/2 size, sloped modular insert. Accepts two NetKey™ Modules. | Arctic White |
| NKHS2SAW-X | 1/2 size, sloped, shuttered modular insert. Accepts two NetKey™ Modules. | Arctic White |
| Frames | | |
| CBUKAWY | 86mm x 86mm, single gang faceplate frame with label. Accepts one 1/2 size module insert. | Arctic White |
| CBUKAW-2GY | 86mm x 146mm, double gang faceplate frame with labels. Accepts two 1/2 size module inserts. | Arctic White |
| CBAGAW | 50mm x 50mm, single gang faceplate frame with labels. Accepts one 1/2 size module insert. | Arctic White |
| FCFPAW | 80mm x 80mm, faceplate frame accepts all 50mm x 50mm adapters. | Arctic White |
| Adapter | | |
| CBFAW | 45mm x 45mm adapter, accepts one 1/2 size module insert. | Arctic White |

NetKey™ Modular Furniture Faceplate



NK4MFIW

| Part Number | Description | Colour |
|-------------|--|-----------|
| NK4MFIW | Snap-on modular furniture faceplate. Compatible with modular furniture panel cutout dimensions 34mm to 35.56mm – 67mm to 69mm. Accepts up to four NetKey™ Modules. | Off White |

For standard colours other than Off White, replace IW in part number with AW (Arctic White), BL (Black), EI (Electric Ivory), WH (White) or IG (International Grey).

NetKey™ Surface Mount Boxes

- Accept all NetKey™ Modules
- Include mounting screws and adhesive tape
- Compatible with Panduit™ LD3, LD5, and LD10 Raceway



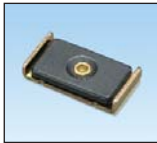
NK2BXIW-A



NK4BXIW-AY



NK6BXIW-AY



CBM-X

| Part Number | Description | Colour |
|-------------|---|-----------|
| NK2BXIW-A | Surface mount box accepts two NetKey™ Modules. | Off White |
| NK4BXIW-AY | Surface mount box accepts four NetKey™ Modules. | Off White |
| NK6BXIW-AY | Surface mount box accepts six NetKey™ Modules. | Off White |
| CBM-X | Optional magnet for mounting on metal surfaces. Compatible with NK2BXIW-A and NK4BXIW-AY. | — |

For surface mount box standard colours other than IW (Off White), replace suffix with AW (Arctic White), EI (Electric Ivory), IG (International Grey) or WH (White).

Termination Tools



PDT110



NKSPB



CJT



JR-PAN-2



FIELDKIT

| Part Number | Description |
|--|---|
| Pan-Punch™ Termination Tool | |
| PDT110 | Single pair punchdown tool and blade terminates and cuts UTP cable in one operation. Ideal for use with Pan-Punch™ Punchdown System. |
| PDTH110 | Replacement blade for single pair punchdown tool (PDT110). |
| NetKey™ Jack Module Termination Tools | |
| JR-PAN-2* | Fluke** JackRapid Termination Tool for Category 6 and Category 5e NetKey™ Punchdown Modules. |
| CJT-X | Termination tool for Category 3 NetKey™ Leadframe Jack Modules. |
| Punchdown Base | |
| NKSPB | Base used to assist in terminating punchdown modules. |
| Fibre Termination Kit | |
| FIELDKIT | Tools, consumables, installation instructions and stripping templates necessary for termination of all Panduit field polish connectors. |

*Fluke JackRapid Termination Tool available through distribution. Visit www.fluke.com to locate a local distributor. **Fluke is a registered trademark of Fluke Corporation.

NetKey™ Audio/Video Modules



NKFIW



NKBNMIWY



NKRSMBIWY



NKRTMRIW



NKRPMRIW



NKSPMIW



NKSVCIW



NKBPBIWY



NK35MSSIW



NK35MSCIW



NKHDMIW



NKUSBAAIW



NKBMIW-X

| Part Number | Description | Colour |
|----------------------------------|--|-----------|
| F-Type Module | | |
| NKFIW | Keystone module supplied with 75 ohm industry standard F-Type coax bulkhead coupler. | Off White |
| 50 Ohm BNC Coax Module | | |
| NKBNMIWY | Keystone module supplied with 50 ohm industry standard coax bulkhead coupler. | Off White |
| RCA Modules | | |
| NKRSM^IWY | Keystone module supplied with RCA solder type connector. Inserts available in multiple colours. | Off White |
| NKRTM^IW | Keystone module supplied with RCA pass-through connector. Inserts available in multiple colours. | Off White |
| NKRPM^IW | Keystone module supplied with RCA punchdown connector. Inserts available in multiple colours. | Off White |
| S-Video Modules | | |
| NKSPMIW | Keystone module supplied with SVHS punchdown connector. | Off White |
| NKSVCIW | Keystone module supplied with S-Video pass-through connector. | Off White |
| 5-Way Binding Post Module | | |
| NKBP^IWY | Keystone module supplied with 5-way binding post. | Off White |
| 3.5mm Stereo Connector | | |
| NK35MSSIW | Keystone module supplied with 3.5mm (1/8") stereo solder type headset connector. | Off White |
| NK35MSCIW | Keystone module supplied with 3.5mm (1/8") stereo headset coupler. | Off White |
| HDMI Coupler | | |
| NKHDMIW | Keystone module supplied with one HDMI 1.3 Type A female to female coupler module. | Off White |
| USB Coupler | | |
| NKUSBAAIW | Keystone module supplied with one USB 2.0 female A to female A coupler module. | Off White |
| Blank Module | | |
| NKBMIW-X | Blank keystone module reserves space for future use. | Off White |

^To designate insert colour, replace ^ with R (Red), Y (Yellow) or W (White). RCA solder type module (NKRSM^IWY) also available with B (Black) insert.

^^To designate insert colour, replace ^^ with R (Red) or B (Black).

For standard colours other than IW (Off White), replace suffix with AW (Arctic White), EI (Electric Ivory), WH (White), IG (International Grey) or BL (Black). 5-Way Binding Post Module (NKBP^IWY) only available in EI (Electric Ivory) and WH (White).

Media Distribution System

The Panduit media distribution system offers an efficient and cost-effective means to distribute voice, video and data services within commercial and residential locations. High density solutions support a greater number of network services and applications allowing improved space utilisation while cost effectively implementing media components. A comprehensive set of modular components improve design flexibility, enable quick modifications and scalability for future growth from the building demarcation point to the end user's network outlet.

Open Mounting Grid Base

25mm grid pattern across entire enclosure base provides for vertical or horizontal placement of hubs and other components, allowing greater flexibility and maximum use of available space.



Modular Patch Panel

The media distribution NetKey™ Modular Patch Panel provides a front-accessible patch panel module that accepts all NetKey™ Voice, Video, Data and Audio Modules to provide communication to up to eight different locations.



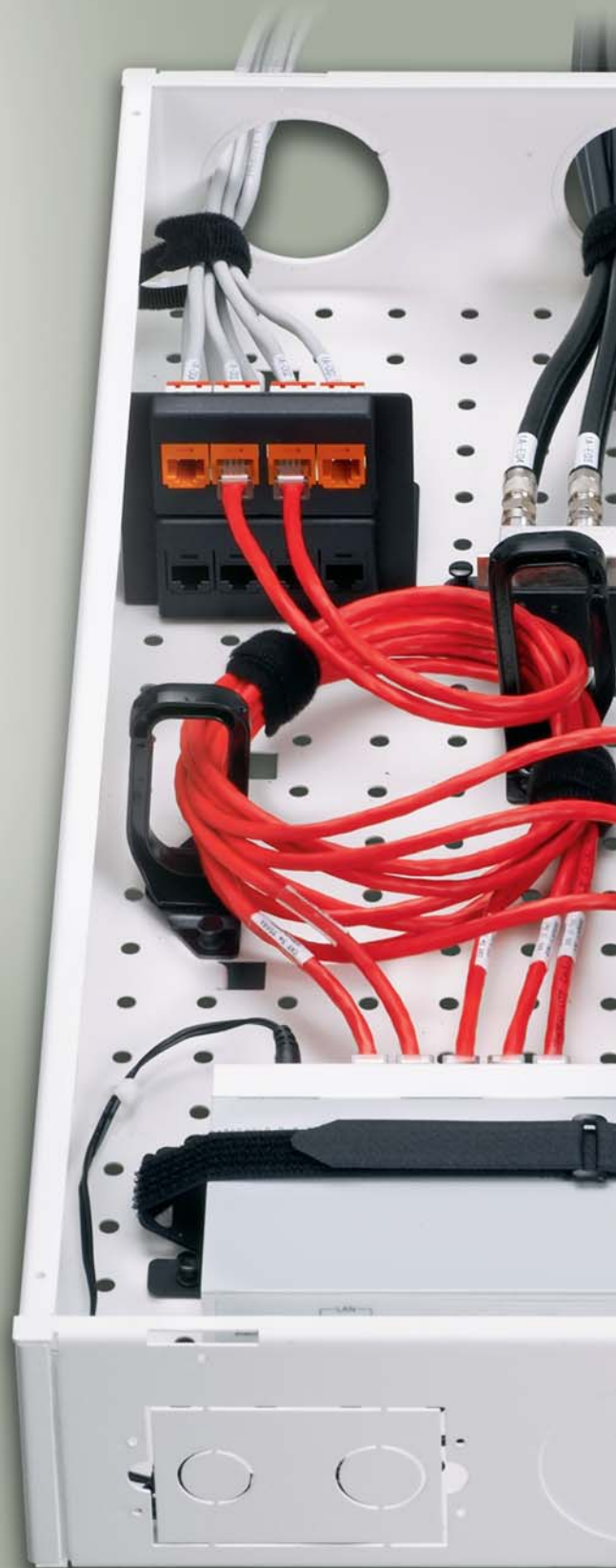
Network Equipment Bracket

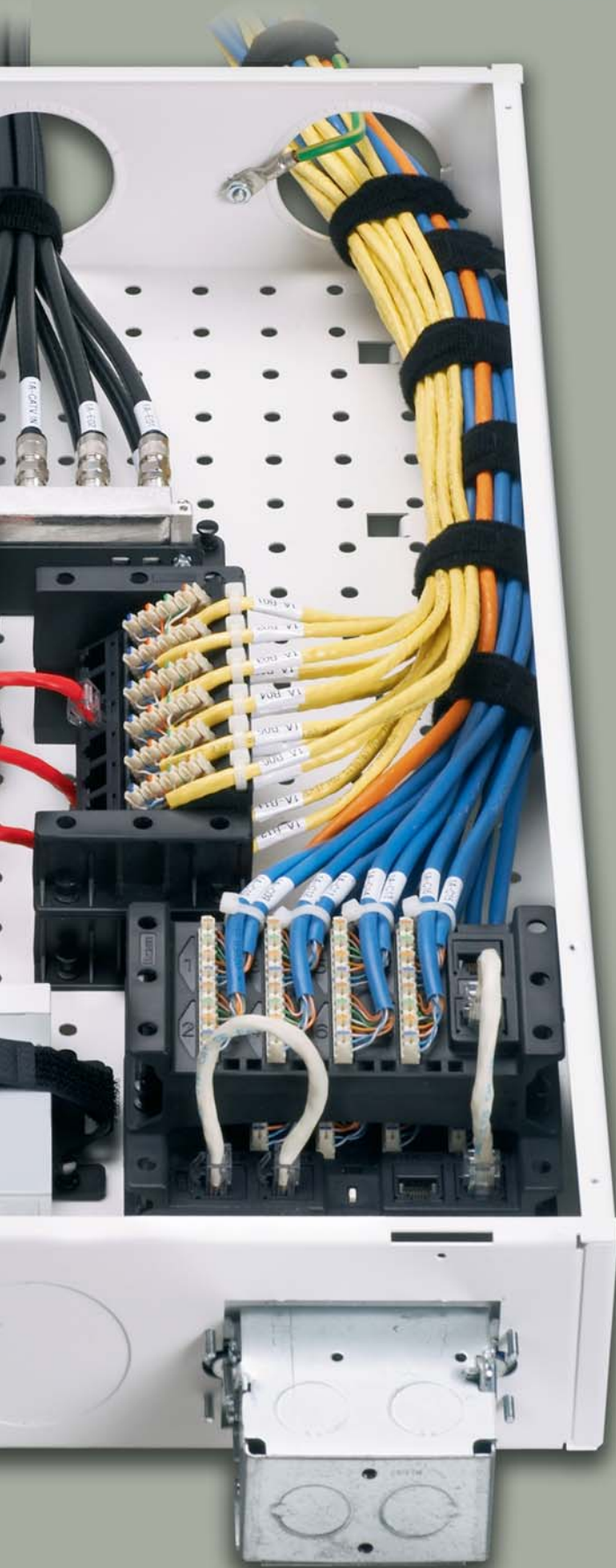
The media distribution equipment bracket secures third-party equipment, such as routers or switches to the media distribution system enclosure, providing flexibility and choice to meet individual needs.



Cable Management

Through the use of D-Hooks and the cable management kit, the Media Distribution System provides superior cable management within the enclosure to organise cables for easy access and to maximise enclosed space.





Phone Hub Test Ports/ Security Interface

Enables testing of the incoming phone lines from the building demarcation point and connections from the enclosure to the residence to ensure performance. Security interface includes a built-in switch that overrides the phone service for emergency notifications, ensuring safety and security of unit or residence when needed.



Stackability

Stackable hubs mount on top of one another to maximise use of enclosure space and offer easy expansion for additional drops.



Grounding and Bonding

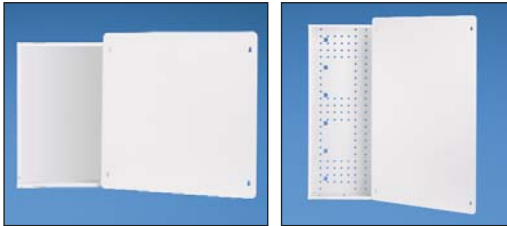
Integrated grounding stud, along with optional grounding kit, provides means to properly ground the enclosure to the surrounding structure, protecting network equipment and maximizing uptime.



Shear forms built-in to the enclosure work with the cable management kit for appropriate cable management.

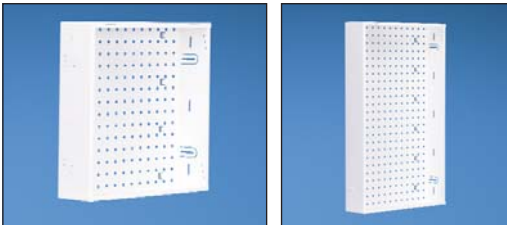
Media Distribution Enclosures

- Enclosures offer easy installation, flexibility for quick modifications and scalability for future growth needs
- Grid pattern in base provides mounting and flexibility for the hubs
- Cantilever mounting slots flex to accommodate misaligned studs
- Integrated drywall positioning slots
- Hinged door (optional) available with lock and key



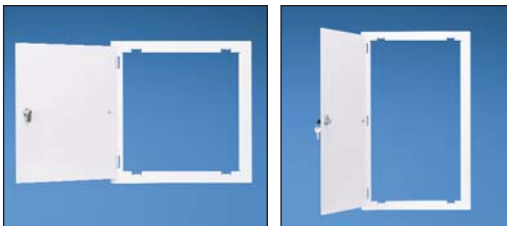
MSB14E

MSB24E



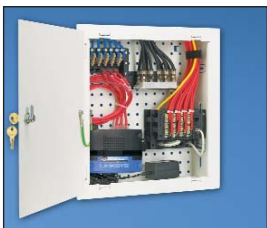
MS14B

MS24B



MS14HD

MS24HD



Populated
Advanced Enclosure

| Part Number | Description | Colour |
|--|---|--------|
| Basic Enclosure Bases with Doors | | |
| MSB14E | 14" x 14" media distribution basic enclosure with screw down door. (362.0mm x 362.00mm x 101.6mm) 14.25"H x 14.25"W x 4.00"D. | White |
| MSB24E | 14" x 24" media distribution basic enclosure with screw down door. (616.0mm x 362.00mm x 101.6mm) 24.25"H x 14.25"W x 4.00"D. | White |
| Advanced Enclosure Bases | | |
| MS14B | 14" x 14" media distribution enclosure base. (362.0mm x 362.00mm x 101.6mm) 14.25"H x 14.25"W x 4.00"D. | White |
| MS24B | 14" x 24" media distribution enclosure base. (616.0mm x 362.00mm x 101.6mm) 24.25"H x 14.25"W x 4.00"D. | White |
| Hinged Doors for Advanced Enclosure Bases | | |
| MS14HD | 14" x 14" hinged door with lock and key. (401.6mm x 400.00mm x 22.1mm) 15.81"H x 15.75"W x .87"D. | White |
| MS24HD | 14"x 24" hinged door with lock and key. (655.6mm x 400.00mm x 22.1mm) 25.81"H x 15.75"W x .87"D. | White |
| MS14BHD | 14" x 14" Frameless hinged door with slam latch. (400mm x 400mm x 15.9mm) 15.75"H x 15.75"W x 0.63"D. | White |
| MS24BHD | 14" x 24" Frameless hinged door with slam latch. (400mm x 654mm x 15.9mm) 15.75"H x 25.75"W x 0.63"D. | White |

Base and door for advanced enclosures sold separately.

Media Distribution Voice (Phone) Hubs

- Split incoming phone lines up to eight locations to provide basic phone, fax and modem services
- Expansion hub (optional) available for an additional eight connections



MS8PD



MS8PE

| Part Number | Description | Colour |
|-------------|--|--------|
| MS8PD | Phone distribution hub with test ports and a security interface. | Black |
| MS8PE | Phone expansion hub. | Black |

Media Distribution Patch Panel

- Front accessible
- Accept all NetKey™ Modules



NKM8PP

| Part Number | Description | Colour |
|-------------|-----------------------------|--------|
| NKM8PP | 8-port modular patch panel. | Black |

Media Distribution Video Splitters

- Split incoming video/coax to distribute services
- Pre-mounted onto metal bracket for quick installation
- Snap directly into grid patterned enclosures for easy installation, moves, adds and changes



MS4S1G



MS8S1G



MS4S2G



MS8S2G

| Part Number | Description |
|------------------------|--|
| 1 GHz Splitters | |
| MS4S1G | Media distribution 1 x 4 passive video splitter with 1 GHz performance to distribute high-quality RF signals to up to four outputs. |
| MS8S1G | Media distribution 1 x 8 passive video splitter with 1 GHz performance to distribute high-quality RF signals to up to eight outputs. |
| 2 GHz Splitters | |
| MS4S2G | Media distribution 1 x 4 passive video splitter with 2 GHz performance to distribute high-quality RF signals to up to four outputs. |
| MS8S2G | Media distribution 1 x 8 passive video splitter with 2 GHz performance to distribute high-quality RF signals to up to eight outputs. |

Media Distribution Data Hub

- Meets Category 5e performance standards
- Front side 110 punchdown termination
- Allows easy access to connections within the enclosure

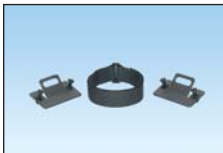


MS5E6PP

| Part Number | Description | Colour |
|-------------|--|--------|
| MS5E6PP | Media distribution data hub for up to six different locations. | Black |

Media Distribution Accessories

- Bracket accepts third party equipment for design flexibility
- Cable management kit assists in proper cable routing within the enclosure
- Grounding kit includes assists in properly grounding media distribution
- Cable management ring controls cable bend radius



MSEBRKT



MSCM-KIT



MSGRD-KIT



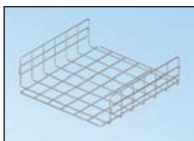
MSCMR

| Part Number | Description |
|---|---|
| Media Distribution Kits | |
| MSEBRKT | Media distribution equipment bracket that allows a variety of third-party equipment to be securely mounted within an enclosure. |
| MSCM-KIT | Media distribution cable management kit that includes the necessary components to help manage cables. |
| MSGRD-KIT | Media distribution grounding kit that includes necessary components to help ground media distribution. |
| Media Distribution Cable Management Ring | |
| MSCMR | Media distribution cable management ring. |

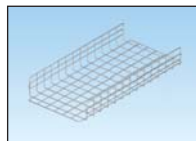
GridRunner™ Underfloor Cable Routing System

- Wire baskets used with pedestal brackets carry cables horizontally in underfloor installations and provide secure connection and electrical bond to raised floor pedestal; available in two depths 100mm and 150mm and two lengths 600mm and 1200mm
- Wire baskets feature all rounded edges; require no cutting or deburring of sharp edges
- Wire baskets, pedestal brackets and accessories are made of pre-galvanised steel wire
- Pre-assembled pedestal bracket supports wire baskets on all three sides of a single support bracket
- Accommodates 600mm x 600mm raised floor grids

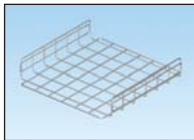
GridRunner™ Wire Baskets



GR21X6X24PG



GR21X6X48PG



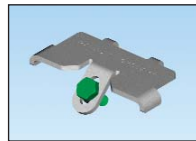
GR21X4X24PG



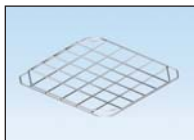
GR21X4X48PG



GRPBPG



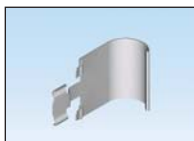
GRCLAMPPG-X



GRFWC21PG



GRBRC6PG



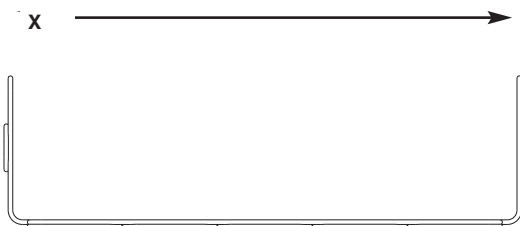
GRBRC4PG



GPQC10-1/0

| Part Number | Description |
|-------------------------------------|---|
| Wire Basket Sections | |
| GR21X6X24PG | 530mm wide x 150mm deep x 600mm long section. |
| GR21X6X48PG | 530mm wide x 150mm deep x 1200mm long section. |
| GR21X4X24PG | 530mm wide x 100mm deep x 600mm long section. |
| GR21X4X48PG | 530mm wide x 100mm deep x 1200mm long section. |
| Pedestal Bracket | |
| GRPBPG | Pre-assembled bracket quickly attaches to all 22.2mm square and 25.4mm diameter raised floor pedestals. |
| Pedestal Clamp | |
| GRCLAMPPG-X | Used in conjunction with pedestal bracket to fasten wire basket sections to the pedestal. |
| Universal Intersection | |
| GRFWC21PG | Mounts to pedestal bracket to create four way cross, horizontal tee, right angles and transitions to other size wire basket sections. Use 11.1mm nut driver to assemble. |
| Bend Radius Control Corners | |
| GRBRC6PG | Bend radius control corner for 150mm deep basket sections. Snaps into corners to provide 38mm bend radius control. Sheet metal construction. |
| GRBRC4PG | Bend radius control corner for 100mm deep basket sections. Snaps into corners to provide 38mm bend radius control. Sheet metal construction. |
| Access Floor Grounding Clamp | |
| GPQC10-1/0 | Access floor grounding clamp accepts up to two conductors in sizes 16 -50mm ² , #6-1/0 AWG; 106.4mm depth, 85.9mm width, 81.0mm height; works with 22mm square and 25mm to 29mm round pedestals. |

Cable Fills GridRunner™ Underfloor Cable Routing System



| "X" | "Y" | Category 6 Diameter 6.35mm | Category 5e Diameter 4.75mm | Fibre Optic Distribution Cable Diameter 12.7mm |
|---------|---------|----------------------------------|-----------------------------------|--|
| | | 50% Fill | | |
| 551.2mm | 101.6mm | 885 | 1580 | 221 |
| 551.2mm | 152.4mm | 1327 | 2372 | 332 |

Racks and Cable Management

- Cable management products and accessories maintain bend radius control and cable performance while bundling and securing cable to prevent snags and stress from over bending



R2P

WMPV45E

WMPSE

WMP1E



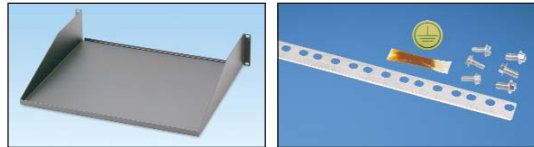
CMPH1

CMPH2



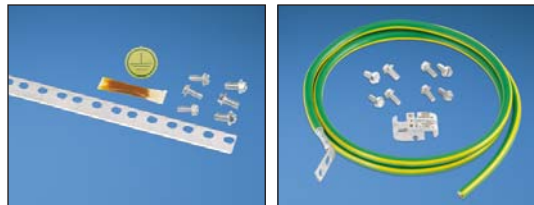
CMPHF1

SRM19FM1



SRM19FM2

RGS134-1Y



RGS134-10-1Y

RGCBNJ660P22

| Part Number | Description |
|--------------|---|
| R2P | 19" EIA rack aluminium rack. 2134mm x 514mm x 76mm (84.0"H x 20.3"W x 3.0"D). 45 RU. |
| WMPV45E | NetRunner™ Front and Rear Vertical Cable Manager with dual hinged cover, wire retainers and side mount brackets. 45 RU. |
| WMPSE | PatchLink™ Front and Rear Horizontal Cable Manager with dual hinged cover. 1 RU. |
| WMP1E | PatchLink™ Front and Rear Horizontal Cable Manager with dual hinged cover. 2 RU. |
| CMPH1 | OpenAccess™ Front and Rear Horizontal Cable Manager with optional snap on cover. 1 RU. |
| CMPH2 | OpenAccess™ Front and Rear Horizontal Cable Manager with optional snap on cover. 2 RU. |
| CMPHF1 | OpenAccess™ Front Only Horizontal Cable Manager with optional snap on cover. 1 RU. |
| SRM19FM1 | Rack mount shelf, 13.6 kg capacity, 1 RU. |
| SRM19FM2 | Rack mount shelf, 22.6 kg capacity, 2 RU. |
| RGS134-1Y | Rack grounding strip (1.9m length, 17mm width, 1.27mm thickness). Provided with 5cc of antioxidant, one grounding sticker, and three each M6 x 12mm and #12-24 x 1/2" thread-forming screws. |
| RGS134-10-1Y | 10 rack grounding strips (1.9m length, 17mm width, 1.27mm thickness). Provided with 5cc of antioxidant, one grounding sticker, and 30 each M6 x 12mm and #12-24 x 1/2" thread forming screws. |
| RGCBNJ660P22 | Common bonding network to rack jumper kit. Provided with HTAP that bonds to MCBN sizes ranging from 16mm² - 25mm². |

For complete cable management and bonding/grounding offering, reference the Panduit Physical Infrastructure Systems Catalogue (SA-NCCB51) or visit www.panduit.com.

Identification and Labelling Systems

- Variety of labelling systems and labels enable quick and easy network identification



LS8EQ-KIT



LS8EQ



LS9Q



LS8E



LS8E-KIT



TDP43MY



S100X150VAC
and S100X150VA1Y

| Part Number | Description |
|--|--|
| PanTher™ LS8EQ and Cougar™ LS9Q Hand-Held Thermal Transfer Printers | |
| LS8EQ-KIT-ACS | Includes LS8EQ printer with QWERTY keypad, one cassette of S100X150VAC self-laminating labels, six AA alkaline batteries, LS8E-ACS, LS8-CASE, LS8-PCKIT, LS8-IB, LS8-WS, quick reference card and operator's manual. |
| LS8EQ-KIT | Includes LS8EQ printer with QWERTY keypad, one cassette of S100X150VAC self-laminating labels, six AA alkaline batteries, LS8-CASE, LS8-PCKIT, LS8-IB, LS8-WS, quick reference card and operator's manual. |
| LS8EQ | Includes LS8EQ printer with QWERTY keypad, one cassette of S100X150VAC self-laminating labels, six AA alkaline batteries and quick reference card. |
| LS9Q | Includes LS9Q printer with QWERTY keypad, one cassette of T100X000C1C-BK continuous nylon cloth tape, six AA alkaline batteries and quick reference card. |
| PanTher™ LS8E Hand-Held Thermal Transfer Printer and Accessories | |
| LS8E | LS8E printer, one cassette of self-laminating labels, six AA alkaline batteries and quick reference card. |
| LS8E-KIT | LS8E printer, one cassette of self-laminating labels, six AA alkaline batteries, rigid carrying case, LS8-PCKIT, LS8-IB, operator's manual and quick reference card. |
| S100X150VAC | Self-laminating, white vinyl label for use with LS8E printer. |
| Thermal Transfer Desktop Printer and Accessories | |
| TDP43MY | 300 dpi printer, Panduit™ Easy-Mark™ Labelling Software, hybrid black ribbon, AC power adapter with US and Europlug power cords, operator's manual and quick reference card. |
| S100X150VA1Y | Self-laminating, white vinyl label for use with thermal transfer desktop printer. |

For complete identification offering, reference the Panduit Physical Infrastructure Systems Catalogue (SA-NCCB51) or visit www.panduit.com.

Real-World Solutions to Ensure the Success of Our Customers

With a proven reputation for excellence and technology innovation, a robust ecosystem of global partners, and long-term alliances with top industry leaders, Panduit is a valuable, trusted partner offering strategic vision and real-world solutions to ensure the success of our customers.



Innovative Technology Leadership

Panduit is an industry leader in developing innovative technology solutions that meet the rapidly evolving needs of our customers around the world. Our commitment to continued leadership is supported by significant ongoing investment, dedicated manufacturing facilities, strategic technology alliances, and collaborative R&D with other industry leaders.



Global Business & Commitment

Panduit's ongoing commitment to excellence and our technology alliances with key industry leaders such as Cisco Systems, EMC, Emerson, and IBM, enables our highly skilled and knowledgeable global sales, systems engineering, and technical support teams to engage with critical customer challenges that range from initial problem determination all the way to resolution. Local specialists, trained to global standards and competencies, provide consistent regional support that brings value to local business. Our global value chain, which combines manufacturing, distribution and service, provides prompt responses to customer-related issues, and streamlines procurement and delivery to any global destination.



Best-in-Class Partner Ecosystem

Panduit employs a consultative approach to identify customer needs and engage appropriate partners in a collaborative fashion to serve our customers. Panduit's robust ecosystem of architects, consultants, engineers, designers, systems integrators, contractors and distributors offer a full portfolio of lifecycle services. Our partners are trained on relevant services to Plan & Design, Build & Deploy, and Maintain & Operate to deliver predictable and measurable results.



Worldwide Alliances

Panduit has established long-term strategic alliances with top global industry leaders such as Cisco Systems, EMC, HP, IBM, Liebert and Rockwell Automation to develop and integrate innovative, holistic solutions for our customers. We continually invest in relationships and resources for solving our customers' greatest business challenges.



Eco-Sustainability & Global Citizenship

With a long-standing commitment to environmental excellence, Panduit continually develops and implements solutions designed to protect, replenish, and restore the world in which we live and operate. This commitment is demonstrated by Panduit's LEED-certified new world headquarters and future green building plans using its own revolutionary Unified Physical InfrastructureSM vision to enable convergence of critical systems for driving sustainability.

Panduit Corp.
World Headquarters
Tinley Park, IL 60487

cs-emea@panduit.com
US and Canada: 800.777.3300
Europe, Middle East, and Africa:
44.208.601.7200
Latin America: 52.33.3777.6000
Asia Pacific: 65.6305.7575

www.panduit.com/NetKey

PANDUITTM

Компания «Life Electronics» занимается поставками электронных компонентов импортного и отечественного производства от производителей и со складов крупных дистрибьюторов Европы, Америки и Азии.

С конца 2013 года компания активно расширяет линейку поставок компонентов по направлению коаксиальный кабель, кварцевые генераторы и конденсаторы (керамические, пленочные, электролитические), за счёт заключения дистрибьюторских договоров

Мы предлагаем:

- Конкурентоспособные цены и скидки постоянным клиентам.
- Специальные условия для постоянных клиентов.
- Подбор аналогов.
- Поставку компонентов в любых объемах, удовлетворяющих вашим потребностям.
- Приемлемые сроки поставки, возможна ускоренная поставка.
- Доставку товара в любую точку России и стран СНГ.
- Комплексную поставку.
- Работу по проектам и поставку образцов.
- Формирование склада под заказчика.
- Сертификаты соответствия на поставляемую продукцию (по желанию клиента).
- Тестирование поставляемой продукции.
- Поставку компонентов, требующих военную и космическую приемку.
- Входной контроль качества.
- Наличие сертификата ISO.

В составе нашей компании организован Конструкторский отдел, призванный помогать разработчикам, и инженерам.

Конструкторский отдел помогает осуществить:

- Регистрацию проекта у производителя компонентов.
- Техническую поддержку проекта.
- Защиту от снятия компонента с производства.
- Оценку стоимости проекта по компонентам.
- Изготовление тестовой платы монтаж и пусконаладочные работы.



Тел: +7 (812) 336 43 04 (многоканальный)
Email: org@lifeelectronics.ru