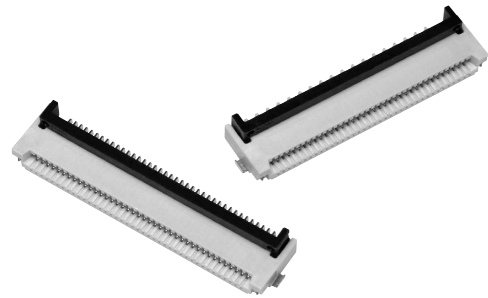


## Rotary Backlock Connectors Provide Improved Insertion of FPC/FFC Cables and helps Confirm Proper Connection with Sure Lock Feel.



- Models available with 0.5-mm or 1.0-mm pitch.
- Models available with dual contacts or upper contacts.  
(Models with upper contacts come only with a 0.5-mm pitch.)
- Models available with gold or tin plating.  
(Tin plating is available only with models with dual contacts.)
- Models with 80 pins (multiple type) available with 0.5-mm pitch.
- Applicable FPC/FFC thickness of 0.3 mm.
- Halogen Free (\*)

\* OMRON uses the following standard to determine halogen-free construction: 900 ppm max. for Br, 900 ppm max. for Cl, and 1,500 ppm max. for Br+Cl.

RoHS compliant

### ■ Ratings and Specifications

|                               |  |
|-------------------------------|--|
| Rated current                 | 0.5 A AC/DC                                      |
| Rated voltage                 | 50 V AC/DC                                       |
| Contact resistance            | 50 mΩ max. (at 20 mV DC max., 100 mA max.)       |
| Insulation resistance         | 100 MΩ min. (at 250 V DC)                        |
| Dielectric strength           | 250 V AC for 1 min. (leakage current: 1 mA max.) |
| Insertion durability          | Gold plating: 20 times<br>Tin plating: 10 times  |
| Ambient operating temperature | -30 to 85 °C (With no icing or condensation)     |

### ■ Materials and Finish

| Model     | Dual Contact Models                           |                            | Upper-contact Models         |
|-----------|---|----------------------------|------------------------------|
| Item      | Gold plating                                  | Tin plating                | Gold plating                 |
| Housing   | LCP resin (UL94 V-0)/natural                  |                            | LCP resin (UL94 V-0)/gray    |
| Slider    | LCP resin (UL94 V-0)/black                    |                            |                              |
| Contacts  | Spring copper alloy/nickel substrate (1.5 μm) |                            |                              |
|           | Gold-plated contacts (flash)                  | Tin-plated contacts (1 μm) | Gold-plated contacts (flash) |
| Hold-down | Copper alloy/tin plating (1 μm)               |                            |                              |

### ■ Model Number Legend (Refer to *Models* on pages 16 and 17 for the product lineup.)

XF3M    -             **5-1**       -   

(1) (2) (3)(4) (5)(6)(7) (8)

#### (1) Classification in Series

3M : 0.5 mm pitch  
3M(1) : 1.0 mm pitch

#### (3) Signal Contact Arrangement

1 : Dual Contact  
2 : Upper Contact

#### (5) Applicable FPC/FFC thickness

1 : 0.3mm

#### (7) Slider

Blank : Standard  
E : Easy-operation connector

#### (2) Number of Signal Contact Pins

#### (4) Terminal Shape

5 : SMT terminals (side entry)

#### (6) Plating

B : Au flash  
D : Sn

#### (8) Packing unit

R100 : 100pcs

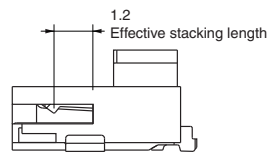
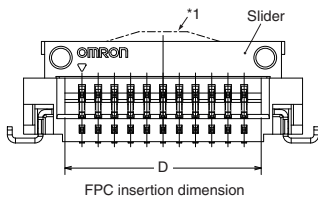
### XF3M 0.5-mm pitch model

#### ■ Dimensions

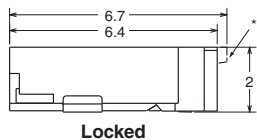
XF3M-□□15-1B  
 XF3M-□□15-1BE  
 XF3M-□□15-1D  
 XF3M-□□25-1B



Model with dual contacts  
Unlocked

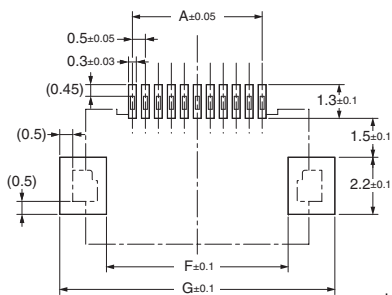


Model with single-sided contacts (upper contacts) \*2  
Unlocked



Locked

#### PCB Dimensions (TOP VIEW)



#### Recommended FPC/FFC Dimensions

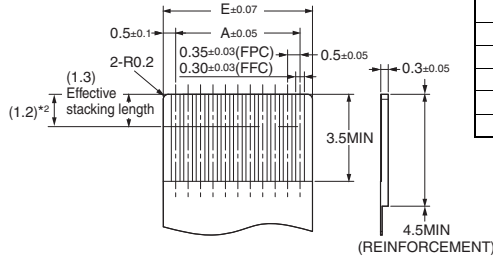


Table of Dimension

| Pins*1 | A    | B    | C    | D     | E    | F    | G    |
|--------|------|------|------|-------|------|------|------|
| 6      | 2.5  | 6.1  | 7.1  | 3.55  | 3.5  | 4.5  | 8.1  |
| 7      | 3.0  | 6.6  | 7.6  | 4.05  | 4.0  | 5.0  | 8.6  |
| 8      | 3.5  | 7.1  | 8.1  | 4.55  | 4.5  | 5.5  | 9.1  |
| 9      | 4.0  | 7.6  | 8.6  | 5.05  | 5.0  | 6.0  | 9.6  |
| 10     | 4.5  | 8.1  | 9.1  | 5.55  | 5.5  | 6.5  | 10.1 |
| 11     | 5.0  | 8.6  | 9.6  | 6.05  | 6.0  | 7.0  | 10.6 |
| 12     | 5.5  | 9.1  | 10.1 | 6.55  | 6.5  | 7.5  | 11.1 |
| 13     | 6.0  | 9.6  | 10.6 | 7.05  | 7.0  | 8.0  | 11.6 |
| 14     | 6.5  | 10.1 | 11.1 | 7.55  | 7.5  | 8.5  | 12.1 |
| 15     | 7.0  | 10.6 | 11.6 | 8.05  | 8.0  | 9.0  | 12.6 |
| 16     | 7.5  | 11.1 | 12.1 | 8.55  | 8.5  | 9.5  | 13.1 |
| 17     | 8.0  | 11.6 | 12.6 | 9.05  | 9.0  | 10.0 | 13.6 |
| 18     | 8.5  | 12.1 | 13.1 | 9.55  | 9.5  | 10.5 | 14.1 |
| 19     | 9.0  | 12.6 | 13.6 | 10.05 | 10.0 | 11.0 | 14.6 |
| 20     | 9.5  | 13.1 | 14.1 | 10.55 | 10.5 | 11.5 | 15.1 |
| 21     | 10.0 | 13.6 | 14.6 | 11.05 | 11.0 | 12.0 | 15.6 |
| 22     | 10.5 | 14.1 | 15.1 | 11.55 | 11.5 | 12.5 | 16.1 |
| 23     | 11.0 | 14.6 | 15.6 | 12.05 | 12.0 | 13.0 | 16.6 |
| 24     | 11.5 | 15.1 | 16.1 | 12.55 | 12.5 | 13.5 | 17.1 |
| 25     | 12.0 | 15.6 | 16.6 | 13.05 | 13.0 | 14.0 | 17.6 |
| 26     | 12.5 | 16.1 | 17.1 | 13.55 | 13.5 | 14.5 | 18.1 |
| 28     | 13.5 | 17.1 | 18.1 | 14.55 | 14.5 | 15.5 | 19.1 |
| 30     | 14.5 | 18.1 | 19.1 | 15.55 | 15.5 | 16.5 | 20.1 |
| 31     | 15.0 | 18.6 | 19.6 | 16.05 | 16.0 | 17.0 | 20.6 |
| 32     | 15.5 | 19.1 | 20.1 | 16.55 | 16.5 | 17.5 | 21.1 |
| 33     | 16.0 | 19.6 | 20.6 | 17.05 | 17.0 | 18.0 | 21.6 |
| 34     | 16.5 | 20.1 | 21.1 | 17.55 | 17.5 | 18.5 | 22.1 |
| 35     | 17.0 | 20.6 | 21.6 | 18.05 | 18.0 | 19.0 | 22.6 |
| 36     | 17.5 | 21.1 | 22.1 | 18.55 | 18.5 | 19.5 | 23.1 |
| 37     | 18.0 | 21.6 | 22.6 | 19.05 | 19.0 | 20.0 | 23.6 |
| 40     | 19.5 | 23.1 | 24.1 | 20.55 | 20.5 | 21.5 | 25.1 |
| 41     | 20.0 | 23.6 | 24.6 | 21.05 | 21.0 | 22.0 | 25.6 |
| 45     | 22.0 | 25.6 | 26.6 | 23.05 | 23.0 | 24.0 | 27.6 |
| 50     | 24.5 | 28.1 | 29.1 | 25.55 | 25.5 | 26.5 | 30.1 |
| 53     | 26.0 | 29.6 | 30.6 | 27.05 | 27.0 | 28.0 | 31.6 |
| 60     | 29.5 | 33.1 | 34.1 | 30.55 | 30.5 | 31.5 | 35.1 |
| 80     | 39.5 | 43.1 | 44.1 | 40.55 | 40.5 | 41.5 | 45.1 |

\*1. Dotted lines indicate the shape and dimensions of the XF3M-8015-1BE Connectors.  
 \*2. For the XF3M-□□25-1B Connectors.

### Ordering Information

#### ● Dual Contact Models - Gold plating

1500pcs per reel

| Pins <sup>*1</sup> | Model        | Pins <sup>*1</sup> | Model        | Pins <sup>*1</sup> | Model        | Pins <sup>*1</sup> | Model        | Quantity per reel (unit) <sup>*2</sup> |
|--------------------|--------------|--------------------|--------------|--------------------|--------------|--------------------|--------------|--|
| 6                  | XF3M-0615-1B | 16                 | XF3M-1615-1B | 26                 | XF3M-2615-1B | 37                 | XF3M-3715-1B | 1,500                                  |
| 7                  | XF3M-0715-1B | 17                 | XF3M-1715-1B | (28)               | XF3M-2815-1B | 40                 | XF3M-4015-1B |  |
| 8                  | XF3M-0815-1B | 18                 | XF3M-1815-1B | 29                 | XF3M-2915-1B | 41                 | XF3M-4115-1B |  |
| 9                  | XF3M-0915-1B | 19                 | XF3M-1915-1B | 30                 | XF3M-3015-1B | 45                 | XF3M-4515-1B |  |
| 10                 | XF3M-1015-1B | 20                 | XF3M-2015-1B | 31                 | XF3M-3115-1B | 50                 | XF3M-5015-1B |  |
| 11                 | XF3M-1115-1B | 21                 | XF3M-2115-1B | (32)               | XF3M-3215-1B | (53)               | XF3M-5315-1B |  |
| 12                 | XF3M-1215-1B | 22                 | XF3M-2215-1B | 33                 | XF3M-3315-1B | 60                 | XF3M-6015-1B |  |
| 13                 | XF3M-1315-1B | 23                 | XF3M-2315-1B | 34                 | XF3M-3415-1B |                    |              |  |
| 14                 | XF3M-1415-1B | 24                 | XF3M-2415-1B | (35)               | XF3M-3515-1B |                    |              |  |
| 15                 | XF3M-1515-1B | 25                 | XF3M-2515-1B | 36                 | XF3M-3615-1B |                    |              |  |

1000pcs per reel

| Pins <sup>*1</sup> | Model         |
|--------------------|---------------|
| 80                 | XF3M-8015-1BE |

100pcs per reel

| Pins <sup>*1</sup> | Model             | Pins <sup>*1</sup> | Model             | Pins <sup>*1</sup> | Model             | Pins <sup>*1</sup> | Model              | Quantity per reel (unit) <sup>*2</sup> |
|--------------------|-------------------|--------------------|-------------------|--------------------|-------------------|--------------------|--------------------|--|
| 6                  | XF3M-0615-1B-R100 | 16                 | XF3M-1615-1B-R100 | 26                 | XF3M-2615-1B-R100 | 37                 | XF3M-3715-1B-R100  | 100                                    |
| 7                  | XF3M-0715-1B-R100 | 17                 | XF3M-1715-1B-R100 | (28)               | XF3M-2815-1B-R100 | 40                 | XF3M-4015-1B-R100  |  |
| 8                  | XF3M-0815-1B-R100 | 18                 | XF3M-1815-1B-R100 | 29                 | XF3M-2915-1B-R100 | 41                 | XF3M-4115-1B-R100  |  |
| 9                  | XF3M-0915-1B-R100 | 19                 | XF3M-1915-1B-R100 | 30                 | XF3M-3015-1B-R100 | 45                 | XF3M-4515-1B-R100  |  |
| 10                 | XF3M-1015-1B-R100 | 20                 | XF3M-2015-1B-R100 | 31                 | XF3M-3115-1B-R100 | 50                 | XF3M-5015-1B-R100  |  |
| 11                 | XF3M-1115-1B-R100 | 21                 | XF3M-2115-1B-R100 | (32)               | XF3M-3215-1B-R100 | (53)               | XF3M-5315-1B-R100  |  |
| 12                 | XF3M-1215-1B-R100 | 22                 | XF3M-2215-1B-R100 | 33                 | XF3M-3315-1B-R100 | 60                 | XF3M-6015-1B-R100  |  |
| 13                 | XF3M-1315-1B-R100 | 23                 | XF3M-2315-1B-R100 | 34                 | XF3M-3415-1B-R100 | 80                 | XF3M-8015-1BE-R100 |  |
| 14                 | XF3M-1415-1B-R100 | 24                 | XF3M-2415-1B-R100 | (35)               | XF3M-3515-1B-R100 |                    |                    |  |
| 15                 | XF3M-1515-1B-R100 | 25                 | XF3M-2515-1B-R100 | 36                 | XF3M-3615-1B-R100 |                    |                    |  |

#### ● Dual Contact Models - Tin plating

1500pcs per reel

| Pins <sup>*1</sup> | Model        | Pins <sup>*1</sup> | Model        | Pins <sup>*1</sup> | Model        | Quantity per reel (unit) <sup>*2</sup> |
|--------------------|--------------|--------------------|--------------|--------------------|--------------|--|
| (6)                | XF3M-0615-1D | (11)               | XF3M-1115-1D | (16)               | XF3M-1615-1D | 1,500                                  |
| (7)                | XF3M-0715-1D | (12)               | XF3M-1215-1D | (17)               | XF3M-1715-1D |  |
| (8)                | XF3M-0815-1D | (13)               | XF3M-1315-1D | (18)               | XF3M-1815-1D |  |
| (9)                | XF3M-0915-1D | (14)               | XF3M-1415-1D | (19)               | XF3M-1915-1D |  |
| (10)               | XF3M-1015-1D | (15)               | XF3M-1515-1D | (20)               | XF3M-2015-1D |  |

100pcs per reel

| Pins <sup>*1</sup> | Model             | Pins <sup>*1</sup> | Model             | Pins <sup>*1</sup> | Model             | Quantity per reel (unit) <sup>*2</sup> |
|--------------------|-------------------|--------------------|-------------------|--------------------|-------------------|--|
| (6)                | XF3M-0615-1D-R100 | (11)               | XF3M-1115-1D-R100 | (16)               | XF3M-1615-1D-R100 | 100                                    |
| (7)                | XF3M-0715-1D-R100 | (12)               | XF3M-1215-1D-R100 | (17)               | XF3M-1715-1D-R100 |  |
| (8)                | XF3M-0815-1D-R100 | (13)               | XF3M-1315-1D-R100 | (18)               | XF3M-1815-1D-R100 |  |
| (9)                | XF3M-0915-1D-R100 | (14)               | XF3M-1415-1D-R100 | (19)               | XF3M-1915-1D-R100 |  |
| (10)               | XF3M-1015-1D-R100 | (15)               | XF3M-1515-1D-R100 | (20)               | XF3M-2015-1D-R100 |  |

#### ● Upper-contact Models - Gold plating

1500pcs per reel

| Pins <sup>*1</sup> | Model        | Pins <sup>*1</sup> | Model        | Pins <sup>*1</sup> | Model        | Quantity per reel (unit) <sup>*2</sup> |
|--------------------|--------------|--------------------|--------------|--------------------|--------------|--|
| (6)                | XF3M-0625-1B | 12                 | XF3M-1225-1B | 18                 | XF3M-1825-1B | 1,500                                  |
| 7                  | XF3M-0725-1B | (13)               | XF3M-1325-1B | (19)               | XF3M-1925-1B |  |
| 8                  | XF3M-0825-1B | 14                 | XF3M-1425-1B | (20)               | XF3M-2025-1B |  |
| 9                  | XF3M-0925-1B | (15)               | XF3M-1525-1B | 22                 | XF3M-2225-1B |  |
| (10)               | XF3M-1025-1B | 16                 | XF3M-1625-1B | 24                 | XF3M-2425-1B |  |
| (11)               | XF3M-1125-1B | (17)               | XF3M-1725-1B | 40                 | XF3M-4025-1B |  |

100pcs per reel

| Pins <sup>*1</sup> | Model             | Pins <sup>*1</sup> | Model             | Pins <sup>*1</sup> | Model             | Quantity per reel (unit) <sup>*2</sup> |
|--------------------|-------------------|--------------------|-------------------|--------------------|-------------------|--|
| (6)                | XF3M-0625-1B-R100 | (12)               | XF3M-1225-1B-R100 | (18)               | XF3M-1825-1B-R100 | 100                                    |
| (7)                | XF3M-0725-1B-R100 | (13)               | XF3M-1325-1B-R100 | (19)               | XF3M-1925-1B-R100 |  |
| (8)                | XF3M-0825-1B-R100 | (14)               | XF3M-1425-1B-R100 | (20)               | XF3M-2025-1B-R100 |  |
| (9)                | XF3M-0925-1B-R100 | (15)               | XF3M-1525-1B-R100 | (22)               | XF3M-2225-1B-R100 |  |
| (10)               | XF3M-1025-1B-R100 | (16)               | XF3M-1625-1B-R100 | (24)               | XF3M-2425-1B-R100 |  |
| (11)               | XF3M-1125-1B-R100 | (17)               | XF3M-1725-1B-R100 | (40)               | XF3M-4025-1B-R100 |  |

\*1. Please consult your OMRON representative for available pin count.

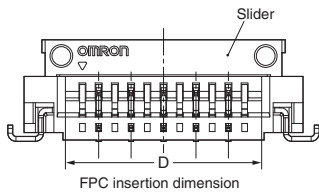
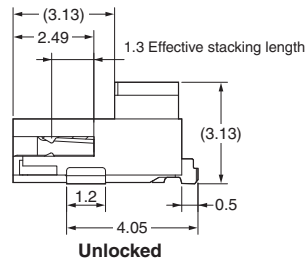
Please consult your OMRON representative for the marketing dates for pin counts in parentheses.

\*2. Please order by integer multiple of the quantity per reel.

### XF3M(1) 1.0-mm pitch model

#### ■ Dimensions

XF3M(1)-□□15-1B  
XF3M(1)-□□15-1D



#### PCB Dimensions (TOP VIEW)



#### Recommended FPC/FFC Dimensions



Table of Dimensions

| Pins*1 | A    | B    | C    | D     | E    | F    | G    |
|--------|------|------|------|-------|------|------|------|
| 4      | 3.0  | 7.6  | 8.6  | 5.05  | 5.0  | 6.0  | 9.6  |
| 5      | 4.0  | 8.6  | 9.6  | 6.05  | 6.0  | 7.0  | 10.6 |
| 6      | 5.0  | 9.6  | 10.6 | 7.05  | 7.0  | 8.0  | 11.6 |
| 7      | 6.0  | 10.6 | 11.6 | 8.05  | 8.0  | 9.0  | 12.6 |
| 8      | 7.0  | 11.6 | 12.6 | 9.05  | 9.0  | 10.0 | 13.6 |
| 9      | 8.0  | 12.6 | 13.6 | 10.05 | 10.0 | 11.0 | 14.6 |
| 10     | 9.0  | 13.6 | 14.6 | 11.05 | 11.0 | 12.0 | 15.6 |
| 11     | 10.0 | 14.6 | 15.6 | 12.05 | 12.0 | 13.0 | 16.6 |
| 12     | 11.0 | 15.6 | 16.6 | 13.05 | 13.0 | 14.0 | 17.6 |
| 15     | 14.0 | 18.6 | 19.6 | 16.05 | 16.0 | 17.0 | 20.6 |
| 16     | 15.0 | 19.6 | 20.6 | 17.05 | 17.0 | 18.0 | 21.6 |
| 17     | 16.0 | 20.6 | 21.6 | 18.05 | 18.0 | 19.0 | 22.6 |
| 18     | 17.0 | 21.6 | 22.6 | 19.05 | 19.0 | 20.0 | 23.6 |
| 20     | 19.0 | 23.6 | 24.6 | 21.05 | 21.0 | 22.0 | 25.6 |
| 22     | 21.0 | 25.6 | 26.6 | 23.05 | 23.0 | 24.0 | 27.6 |
| 26     | 25.0 | 29.6 | 30.6 | 27.05 | 27.0 | 28.0 | 31.6 |
| 30     | 29.0 | 33.6 | 34.6 | 31.05 | 31.0 | 32.0 | 35.6 |

#### ■ Ordering Information

##### ● Dual Contact Models - Gold plating

1500pcs per reel

| Pins*1 | Model           | Pins*1 | Model           | Pins*1 | Model           | Pins*1 | Model           | Quantity per reel (unit) *2 |
|--------|-----------------|--------|-----------------|--------|-----------------|--------|-----------------|-----------------------------|
| 4      | XF3M(1)-0415-1B | 9      | XF3M(1)-0915-1B | 15     | XF3M(1)-1515-1B | 22     | XF3M(1)-2215-1B | 1,500                       |
| 5      | XF3M(1)-0515-1B | 10     | XF3M(1)-1015-1B | 16     | XF3M(1)-1615-1B | 26     | XF3M(1)-2615-1B |                             |
| 6      | XF3M(1)-0615-1B | 11     | XF3M(1)-1115-1B | (17)   | XF3M(1)-1715-1B | 30     | XF3M(1)-3015-1B |                             |
| 7      | XF3M(1)-0715-1B | 12     | XF3M(1)-1215-1B | 18     | XF3M(1)-1815-1B |        |                 |                             |
| 8      | XF3M(1)-0815-1B | 14     | XF3M(1)-1415-1B | 20     | XF3M(1)-2015-1B |        |                 |                             |

100pcs per reel

| Pins*1 | Model                | Pins*1 | Model                | Pins*1 | Model                | Pins*1 | Model                | Quantity per reel (unit) *2 |
|--------|----------------------|--------|----------------------|--------|----------------------|--------|----------------------|-----------------------------|
| 4      | XF3M(1)-0415-1B-R100 | 9      | XF3M(1)-0915-1B-R100 | 15     | XF3M(1)-1515-1B-R100 | 22     | XF3M(1)-2215-1B-R100 | 100                         |
| 5      | XF3M(1)-0515-1B-R100 | 10     | XF3M(1)-1015-1B-R100 | 16     | XF3M(1)-1615-1B-R100 | 26     | XF3M(1)-2615-1B-R100 |                             |
| 6      | XF3M(1)-0615-1B-R100 | 11     | XF3M(1)-1115-1B-R100 | (17)   | XF3M(1)-1715-1B-R100 | 30     | XF3M(1)-3015-1B-R100 |                             |
| 7      | XF3M(1)-0715-1B-R100 | 12     | XF3M(1)-1215-1B-R100 | 18     | XF3M(1)-1815-1B-R100 |        |                      |                             |
| 8      | XF3M(1)-0815-1B-R100 | 14     | XF3M(1)-1415-1B-R100 | 20     | XF3M(1)-2015-1B-R100 |        |                      |                             |

##### ● Dual Contact Models - Tin plating

1500pcs per reel

| Pins*1 | Model           | Pins*1 | Model           | Pins*1 | Model           | Quantity per reel (unit) *2 |
|--------|-----------------|--------|-----------------|--------|-----------------|-----------------------------|
| (4)    | XF3M(1)-0415-1D | (9)    | XF3M(1)-0915-1D | (16)   | XF3M(1)-1615-1D | 1,500                       |
| (5)    | XF3M(1)-0515-1D | 10     | XF3M(1)-1015-1D | (17)   | XF3M(1)-1715-1D |                             |
| (6)    | XF3M(1)-0615-1D | (11)   | XF3M(1)-1115-1D | (18)   | XF3M(1)-1815-1D |                             |
| (7)    | XF3M(1)-0715-1D | (12)   | XF3M(1)-1215-1D | (20)   | XF3M(1)-2015-1D |                             |
| (8)    | XF3M(1)-0815-1D | (15)   | XF3M(1)-1515-1D |        |                 |                             |

100pcs per reel

| Pins*1 | Model                | Pins*1 | Model                | Pins*1 | Model                | Quantity per reel (unit) *2 |
|--------|----------------------|--------|----------------------|--------|----------------------|-----------------------------|
| (4)    | XF3M(1)-0415-1D-R100 | (9)    | XF3M(1)-0915-1D-R100 | (16)   | XF3M(1)-1615-1D-R100 | 100                         |
| (5)    | XF3M(1)-0515-1D-R100 | 10     | XF3M(1)-1015-1D-R100 | (17)   | XF3M(1)-1715-1D-R100 |                             |
| (6)    | XF3M(1)-0615-1D-R100 | (11)   | XF3M(1)-1115-1D-R100 | (18)   | XF3M(1)-1815-1D-R100 |                             |
| (7)    | XF3M(1)-0715-1D-R100 | (12)   | XF3M(1)-1215-1D-R100 | (20)   | XF3M(1)-2015-1D-R100 |                             |
| (8)    | XF3M(1)-0815-1D-R100 | (15)   | XF3M(1)-1515-1D-R100 |        |                      |                             |

\*1. Please consult your OMRON representative for available pin count.  
Please consult your OMRON representative for the marketing dates for pin counts in parentheses.  
\*2. Please order by integer multiple of the quantity per reel.

Компания «Life Electronics» занимается поставками электронных компонентов импортного и отечественного производства от производителей и со складов крупных дистрибьюторов Европы, Америки и Азии.

С конца 2013 года компания активно расширяет линейку поставок компонентов по направлению коаксиальный кабель, кварцевые генераторы и конденсаторы (керамические, пленочные, электролитические), за счёт заключения дистрибьюторских договоров

Мы предлагаем:

- Конкуренспособные цены и скидки постоянным клиентам.
- Специальные условия для постоянных клиентов.
- Подбор аналогов.
- Поставку компонентов в любых объемах, удовлетворяющих вашим потребностям.
- Приемлемые сроки поставки, возможна ускоренная поставка.
- Доставку товара в любую точку России и стран СНГ.
- Комплексную поставку.
- Работу по проектам и поставку образцов.
- Формирование склада под заказчика.
- Сертификаты соответствия на поставляемую продукцию (по желанию клиента).
- Тестирование поставляемой продукции.
- Поставку компонентов, требующих военную и космическую приемку.
- Входной контроль качества.
- Наличие сертификата ISO.

В составе нашей компании организован Конструкторский отдел, призванный помогать разработчикам, и инженерам.

Конструкторский отдел помогает осуществить:

- Регистрацию проекта у производителя компонентов.
- Техническую поддержку проекта.
- Защиту от снятия компонента с производства.
- Оценку стоимости проекта по компонентам.
- Изготовление тестовой платы монтаж и пусконаладочные работы.



Тел: +7 (812) 336 43 04 (многоканальный)

Email: [org@lifeelectronics.ru](mailto:org@lifeelectronics.ru)