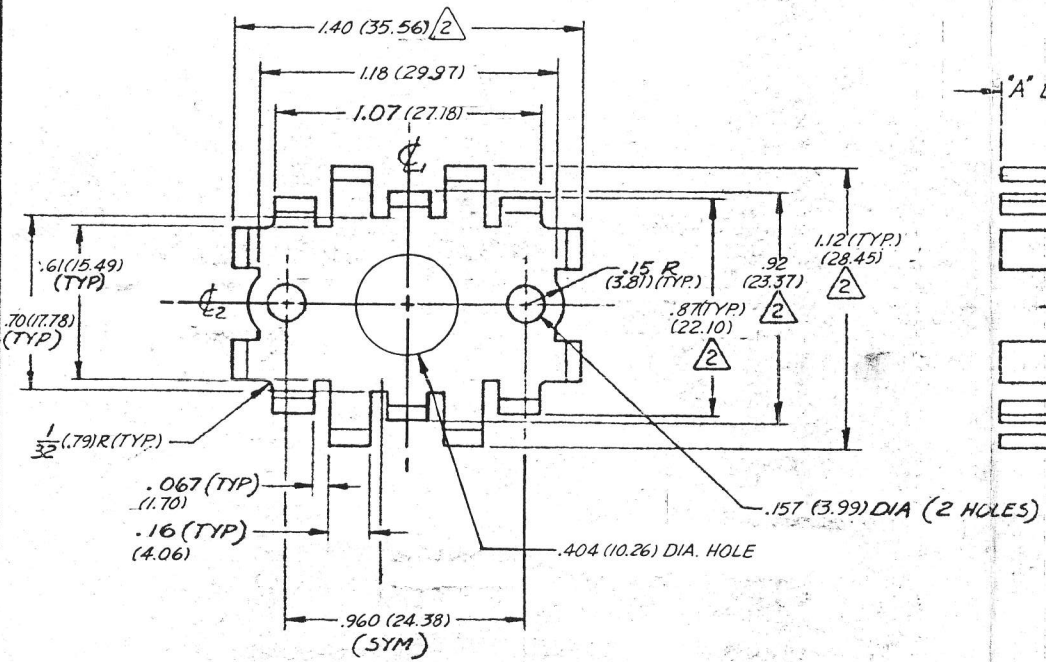


BASE				
PART NO.	HOLE PATTERN	DWG NO.	"A" DIM.	MAT'L NO.
LB66B1-67B	191	3429-10	1/2 (12.7)	108-044
LB66B2-67B			5/16 (7.92)	108-047

REVISIONS				
NO.	DATE	DESCRIPTION	BY	APPROVAL
01-482				
A	7-18-74	ADD FLATNESS, CALL-OUT, & PROD. RELEASED	E.M.	<i>[Signature]</i>

-ECOs-	
OUTSTANDING	
No.	1597
No.	
No.	
No.	

COPY NO. 10



NOTES:

- 1 STANDARD FINISH AS SHOWN. ALTERNATE FINISHES:
 a) INSULUBE 448 PER IERC SPEC 22002, METHOD B. DELETE SUFFIX "B" FROM PART NO. (EX: LB66B1-67).
 b) COMMERCIAL BLACK ANODIZE: DELETE SUFFIX "B" & ADD "CB" TO PART NO. (EX: LB66B1-67CB).
 c) NO FINISH: DELETE SUFFIX "B" & ADD "U" TO PART NO. (EX: LB66B1-67U).
- 2 DIM'S INDICATED TAKEN FROM BASE END OF FINGERS. TOLERANCE OVER BASE END OF FINGERS: ± .015 (.38). TOLERANCE OVER FREE END OF FINGERS: .030 (.76).
- 3 TOLERANCE ON HOLE DIA'S, INSULUBE FINISH ONLY: +.005 (.13) / -.015 (.38).
- 4 ALL BEND RADII: 3/64 R. (.117).
- 5 ϕ_1 & ϕ_2 OF THE HOLE PATTERN TO BE LOCATED WITHIN 1/32 (.79) OF ϕ_1 & ϕ_2 OF THE PART.
- 6 NO MARKING ON PART. PACKAGING IDENTIFIED WITH APPLICABLE PART NO.

BASE			.064 (1.63) THK 6061-T6 ALUMINUM ALLOY OR EQUIV.	BLK. ANODIZE PER IERC SPEC 22000, TYPE II.
PART	ITEM	REQ'D	DESCRIPTION	FINISH

UNLESS OTHERWISE SPECIFIED		DRAFTSMAN	DATE
DIMENSIONS IN PARANTHESES ARE IN MILLIMETERS & APPLY AFTER PLATING.		R. BOYD	5-16-69
DIMENSIONS IN INCHES	APPLICABLE TOL. IN M/M	CHECKER	
FRACTIONAL	± .38	B. M. Quinn	5/16/69
.XX	± .25	ENGINEER	
.XXX	± .13	INSPECTION	
UNLESS OTHERWISE SPECIFIED		W. C. McLean	7/13/74
DIMENSIONS APPLY AFTER PLATING TOLERANCES		PRODUCTION	
FRAC. ± 1/64	.XX ± .010	APPROVED	
ANGLES ± 1/2°	.XXX ± .008	<i>[Signature]</i>	

BASE -
 TRANSISTOR HEAT DISSIPATOR
 (MEDIUM PACKAGE)

IERC
 DIVISION
 INTERNATIONAL ELECTRONIC RESEARCH CORPORATION
 a subsidiary of Dynamics Corporation of America
 BURBANK, CALIFORNIA, U.S.A.

DRAWING NUMBER	REV.
2484-10	A

SCALE 2:1
 CODE 98978 INDEX MFG

PRODUCT DISCLOSED HEREON IS COVERED BY U.S. PATENT NOS 3212569 & 3213324 OWNED BY INTERNATIONAL ELECTRONIC RESEARCH CORP. THE INTERNATIONAL ELECTRONIC RESEARCH CORPORATION CLAIMS PATENT AND/OR PROPRIETARY RIGHTS IN THE MATERIAL DISCLOSED HEREON. THIS DRAWING IS ISSUED IN CONFIDENCE FOR ENGINEERING INFORMATION AND MAY NOT BE REPRODUCED OR USED TO MANUFACTURE ANYTHING SHOWN HEREON WITHOUT DIRECT WRITTEN PERMISSION FROM INTERNATIONAL ELECTRONIC RESEARCH CORPORATION TO THE USER.

IERC



**INTERNATIONAL ELECTRONIC
RESEARCH CORPORATION**

a corporate division of DYNAMICS CORPORATION OF AMERICA
Burbank, California 91502

ENGINEERING CHANGE ORDER

1597

2465-10

0

E.C.O. NUMBER

DOCUMENT NUMBER(S)

REV.



Dwg. Chg.



Mat. Chg.



Process Chg.



Finish Chg.



Other

**OTHER CHANGES
REQUIRED**

INTERCHANGEABILITY AFFECTED YES NO

PARTS AFFECTED

DISTRIBUTION

E.C.O. BY

DATE

NONE

MFG OUTLINE

TOOLING CHG

INSP. CHG

PRICING CHG

INV. CONT. CHG

PURCH. SPEC.

PARTS DISPOSITION

CHECK ONE

NOT AFPEC. - USE

REWORK

EXHAUST EXIS. STOCK

SCRAP or SALVAGE

RE-INSPECT

Raw
Mat. &
Pur.Pts.

In
Process
Semi-
Fin.

Fin.
Compon
in Stock

Assem.
&
in Stock

LB66B1, LB66B2,
LB66B1-76, LB66B2-76
& PLATING SUFFIX
"B, CB, E, U"
LB66B1-91, LB66B2-91,
-67's

STANDARD PER SP 4-6

CHECKER

ENGINEER

INSPECTION

PRODUCTION

APPROVAL

RELEASE

8/19/92

WAS

IS

I.) CHANGE MAT'L DESCRIPTION:

.064 THK. 6061-T4 ALUMINUM ALLOY
(1.63)
PER IERC SPEC 11100 (OR EQUIV.)

.063 THK. 1100-H14 ALUMINUM
ALLOY PER QQ-A-250/1

II.) CHANGE MAT'L STOCK No's:

108-044

108-190

108-047

108-191

III.) DWG'S AFFECTED: 2465-10, 24087-10, 2484-10,

REASON: **INACCESSIBILITY OF 6061-T41 MAT'L**

1597

D

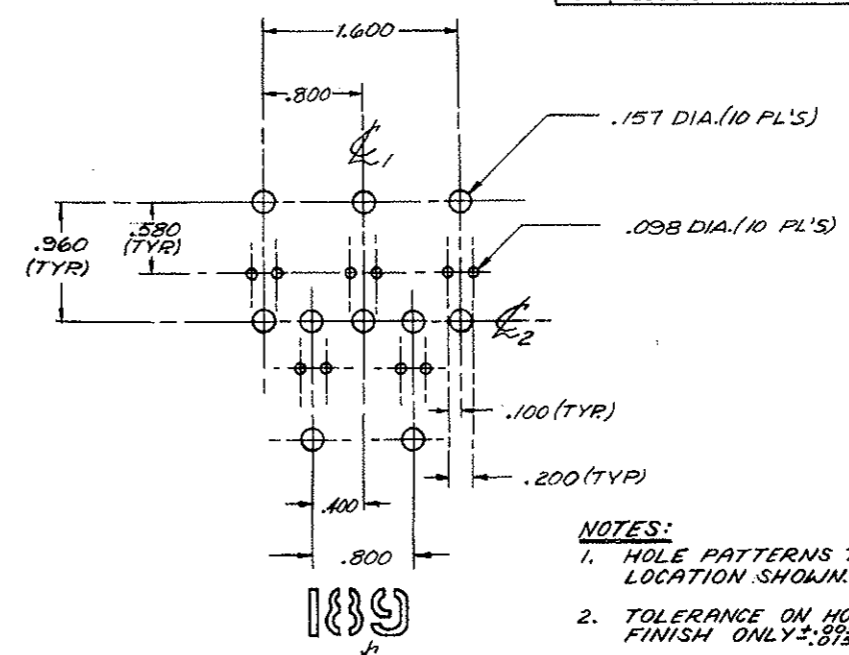
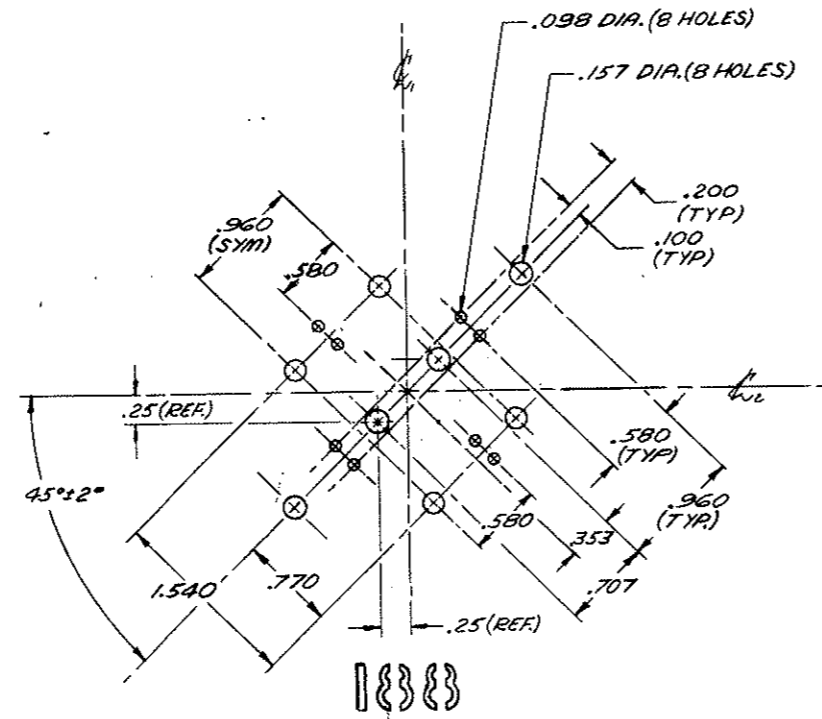
E.C.O. NUMBER

REV.

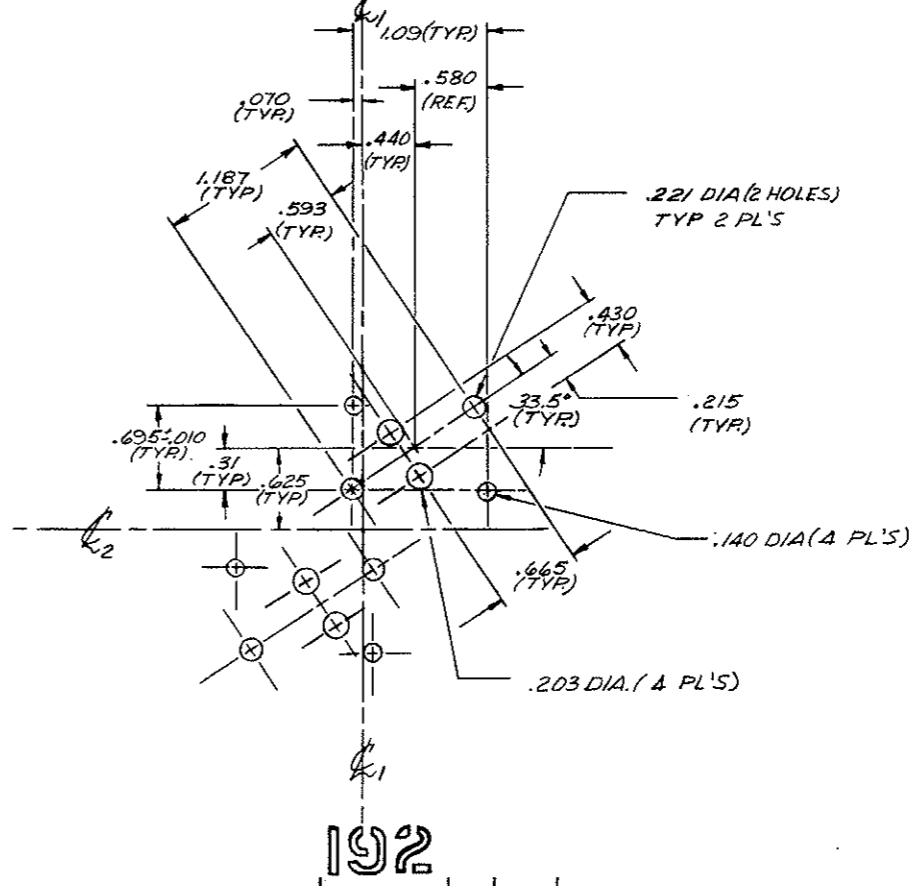
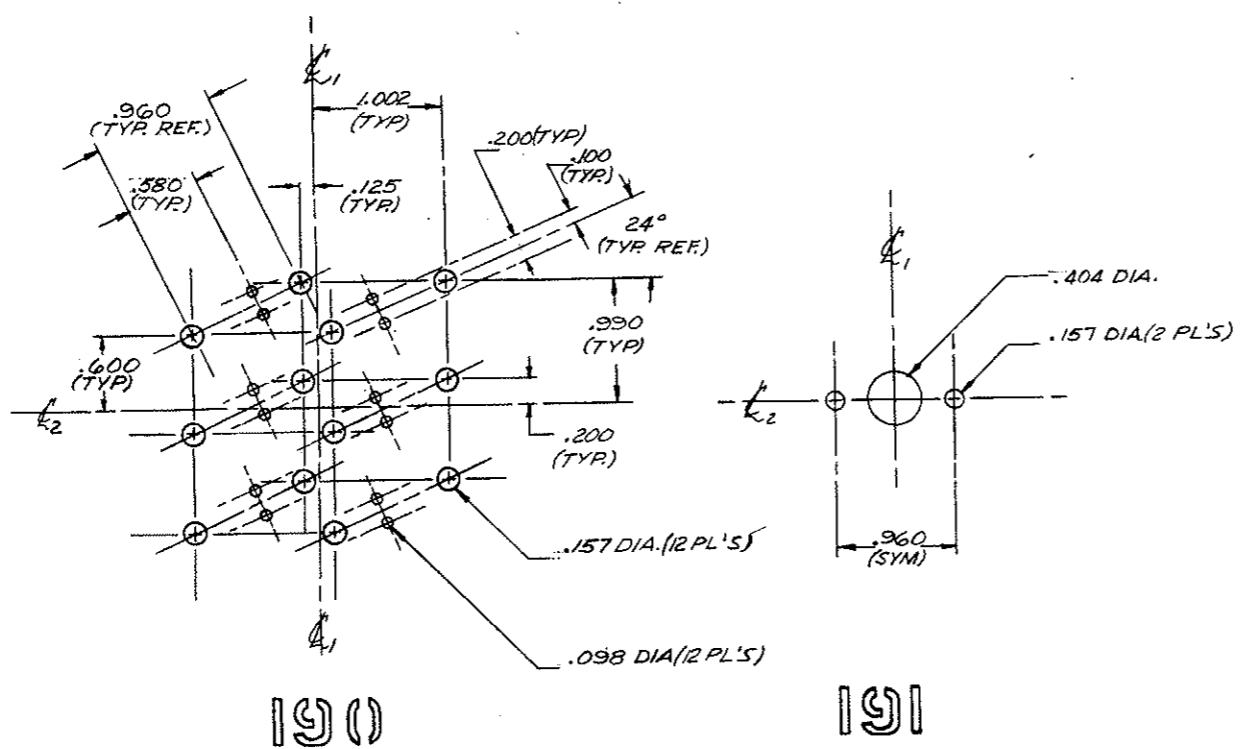
PAGE 1 of 1

HOLE PATTERN	OUTLINE NO
188	(4) T066
189	(5) T066
190	(6) T066
191	T066 (MOD)
192	(2) T03'S WITH SOCKETS

REVISIONS			
SYM	DESCRIPTION	DATE	APPROVAL
A	PRODUCTION RELEASE	7-28-69	[Signature]
B	REDESIGNER HOLE PATTERN NO. 188	11-5-69	[Signature]



NOTES:
 1. HOLE PATTERNS TO BE LOCATED WITHIN 1/32 OF LOCATION SHOWN.
 2. TOLERANCE ON HOLE DIA'S, INSULUBE 448 FINISH ONLY ±.015.



PART	ITEM	REQ'D	DESCRIPTION	FINISH
LIST OF MATERIAL				

DRAFTSMAN	DATE
R. BOYD	6-7-69
CHECKER	DATE
[Signature]	6/9/69
ENGINEER	DATE
[Signature]	7/28/69
INSPECTION	DATE
[Signature]	7/31/69
PRODUCTION	DATE
[Signature]	7/31/69
APPROVED	DATE
[Signature]	8-1-69

HOLE PATTERNS
 188 THRU 192

ierc
 INTERNATIONAL ELECTRONIC RESEARCH CORPORATION
 a corporate division of
 DYNAMIX CORPORATION OF AMERICA
 Burbank, California 91502

DRAWING NUMBER	REV.
3429-10	B
CODE 98978	INDEX: MFG

UNLESS OTHERWISE SPECIFIED —
 DIMENSIONS APPLY AFTER PLATING
 TOLERANCES
 FRAC. ± 1/64 XXX ± .010 SURFACE
 ANGLES ± 1/2° .XXX ± .008

THE INTERNATIONAL ELECTRONIC RESEARCH CORPORATION CLAIMS PATENT AND/OR PROPRIETARY RIGHTS IN THE MATERIAL DISCLOSED HEREON. THIS DRAWING IS ISSUED IN CONFIDENCE FOR ENGINEERING INFORMATION AND MAY NOT BE REPRODUCED OR USED TO MANUFACTURE ANYTHING SHOWN HEREON WITHOUT DIRECT WRITTEN PERMISSION FROM INTERNATIONAL ELECTRONIC RESEARCH CORPORATION TO THE USER.

Компания «Life Electronics» занимается поставками электронных компонентов импортного и отечественного производства от производителей и со складов крупных дистрибьюторов Европы, Америки и Азии.

С конца 2013 года компания активно расширяет линейку поставок компонентов по направлению коаксиальный кабель, кварцевые генераторы и конденсаторы (керамические, пленочные, электролитические), за счёт заключения дистрибьюторских договоров

Мы предлагаем:

- Конкурентоспособные цены и скидки постоянным клиентам.
- Специальные условия для постоянных клиентов.
- Подбор аналогов.
- Поставку компонентов в любых объемах, удовлетворяющих вашим потребностям.
- Приемлемые сроки поставки, возможна ускоренная поставка.
- Доставку товара в любую точку России и стран СНГ.
- Комплексную поставку.
- Работу по проектам и поставку образцов.
- Формирование склада под заказчика.
- Сертификаты соответствия на поставляемую продукцию (по желанию клиента).
- Тестирование поставляемой продукции.
- Поставку компонентов, требующих военную и космическую приемку.
- Входной контроль качества.
- Наличие сертификата ISO.

В составе нашей компании организован Конструкторский отдел, призванный помогать разработчикам, и инженерам.

Конструкторский отдел помогает осуществить:

- Регистрацию проекта у производителя компонентов.
- Техническую поддержку проекта.
- Защиту от снятия компонента с производства.
- Оценку стоимости проекта по компонентам.
- Изготовление тестовой платы монтаж и пусконаладочные работы.



Тел: +7 (812) 336 43 04 (многоканальный)

Email: org@lifeelectronics.ru