

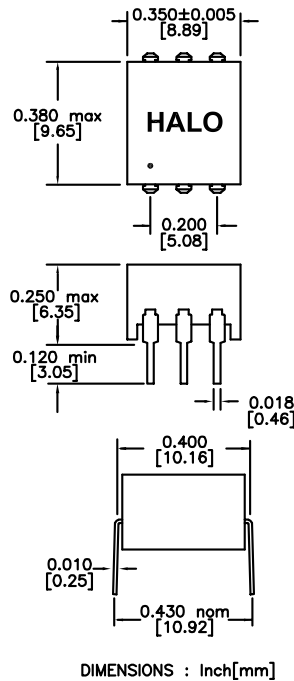
The TGM-NA and TDM-NA, reinforced insulation, 6 pin transformers provide the isolation and voltage outputs required for low cost DC/DC converter circuits. UL1950, IEC950 and EN60950 recognized. Designed specifically for use with the Maxim™ MAX253 and MAX845 monolithic oscillator/power drivers with 3.3V or 5V power source. Other packages are available with isolation voltages ranging from 500 to 4.5KVrms. For more information, pertaining to the MAX845 please contact Maxim at (408) 737-7600. Maxim is a registered trademark of Maxim Integrated Products.



### TGM-NA SMD Package



### TDM-NA DIL Package



### Circuit Diagram



Electrical Specifications @ 25°C  
 Operating Temp: -40 to +85°C  
 Pri Pins: 1-3  
 Pri OCL: 960µH typ  
 Pri DCR: 0.8Ω

Patented Construction  
 US Pat Nbrs: 5,656,985

| SMD       | Part Number | Turns Ratio (±3%) | ET Constant | Isolation |
|-----------|-------------|-------------------|-------------|-----------|
|           | DIL         | PRI:SEC           | V-us min.   | Vrms      |
| TGM-310NA | TDM-310NA   | 2CT:1CT           | 18          | 3,000     |
| TGM-320NA | TDM-320NA   | 8CT:3CT           | 18          | 3,000     |
| TGM-330NA | TDM-330NA   | 4CT:3CT           | 18          | 3,000     |
| TGM-340NA | TDM-340NA   | 3CT:4CT           | 18          | 3,000     |
| TGM-350NA | TDM-350NA   | 1CT:1CT           | 18          | 3,000     |
| TGM-360NA | TDM-360NA   | 1CT:2CT           | 22          | 3,000     |
| TGM-380NA | TDM-380NA   | 3CT:8CT           | 22          | 3,000     |

The TGM-NA and TDM-NA, reinforced insulation, 6 pin transformers provide the isolation and voltage outputs required for low cost DC/DC converter circuits. UL1950, IEC950 and EN60950 recognized. Designed specifically for use with the Maxim™ MAX253 and MAX845 monolithic oscillator/power drivers with 3.3V or 5V power source. Other packages are available with isolation voltages ranging from 500 to 4.5KVrms. For more information, pertaining to the MAX845 please contact Maxim at (408) 737-7600. Maxim is a registered trademark of Maxim Integrated Products.

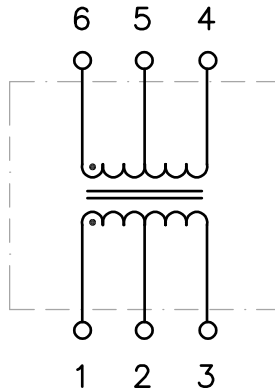


**TGM-NA SMD Package**



DIMENSIONS: Inch[mm]  
CO-PLANARITY: 0.004[0.10]

**Circuit Diagram**



**Electrical Specifications @ 25°C**

Operating Temp: -40 to +85°C  
Pri Pins: 1-3  
Pri OCL: 500µH typ  
Pri DCR: 0.8Ω

Patented Construction  
US Pat Nbrs: 5,656,985

| Part Number | Turns Ratio (±3%) | ET Constant | Isolation |
|-------------|-------------------|-------------|-----------|
| SMD         | PRI:SEC           | V-us min.   | Vrms      |
| TGM-310NARL | 2CT:1CT           | 11          | 3,000     |
| TGM-320NARL | 8CT:3CT           | 11          | 3,000     |
| TGM-330NARL | 4CT:3CT           | 11          | 3,000     |
| TGM-340NARL | 3CT:4CT           | 11          | 3,000     |
| TGM-350NARL | 1CT:1CT           | 11          | 3,000     |
| TGM-360NARL | 1CT:2CT           | 11          | 3,000     |
| TGM-380NARL | 3CT:8CT           | 11          | 3,000     |

The TGM-NF, reinforced insulation, 8 pin transformers provide the isolation and voltage outputs required for low cost DC/DC converter circuits. UL1950, IEC950 and EN60950 recognized. Designed specifically for use with the Maxim™ MAX253 and MAX845 monolithic oscillator/power drivers with 3.3V or 5V power source. Smaller packages are available for lower isolation voltage applications. For more information, pertaining to the MAX845 please contact Maxim at (408) 737-7600. Maxim is a registered trademark of Maxim Integrated Products.



### NF Package



### Circuit Diagram



### Electrical Specifications @ 25°C

Operating Temp: -40 to +85°C  
Pri DCR: 0.8Ω  
Pri OCL (1-4, tie 2-3): 500μH typ

Patented Construction  
US Pat Nbrs: 5,656,985

| Part Number | Turns Ratio (±3%) | ET Constant         | Isolation |
|-------------|-------------------|---------------------|-----------|
|             | PRI:SEC           | V <sub>μs</sub> Min | Vrms      |
| TGM-410NF   | 2CT:1CT           | 18                  | 4,500     |
| TGM-420NF   | 8CT:3CT           | 18                  | 4,500     |
| TGM-430NF   | 4CT:3CT           | 18                  | 4,500     |
| TGM-440NF   | 3CT:4CT           | 18                  | 4,500     |
| TGM-450NF   | 1CT:1CT           | 18                  | 4,500     |

The TGM-NF, reinforced insulation, 8 pin transformers provide the isolation and voltage outputs required for low cost DC/DC converter circuits. UL1950, IEC950 and EN60950 recognized. Designed specifically for use with the Maxim™ MAX253 and MAX845 monolithic oscillator/power drivers with 3.3V or 5V power source. Smaller packages are available for lower isolation voltage applications. For more information, pertaining to the MAX845 please contact Maxim at (408) 737-7600. Maxim is a registered trademark of Maxim Integrated Products.



### NF Package



### Circuit Diagram



Electrical Specifications @ 25°C  
 Operating Temp: -40 to +85°C  
 Pri DCR: 0.8Ω  
 Pri OCL (1-4, tie 2-3): 500μH typ

Patented Construction  
 US Pat Number: 5,656,985

| Part Number | Turns Ratio (±3%)<br>PRI:SEC | ET Constant<br>Vμs Min | Isolation<br>Vrms |
|-------------|------------------------------|------------------------|-------------------|
| TGM-410NFRL | 2CT:1CT                      | 11                     | 4,500             |
| TGM-420NFRL | 8CT:3CT                      | 11                     | 4,500             |
| TGM-430NFRL | 4CT:3CT                      | 11                     | 4,500             |
| TGM-440NFRL | 3CT:4CT                      | 11                     | 4,500             |
| TGM-450NFRL | 1CT:1CT                      | 11                     | 4,500             |

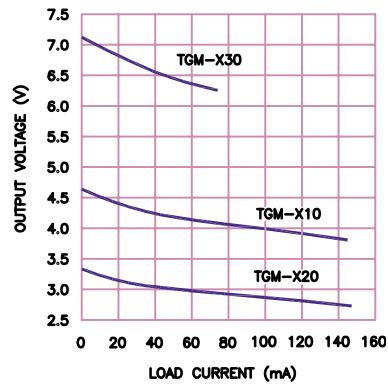
The TDM and TGM series of transformers have been designed specifically for use with the Maxim™ MAX253 and MAX845 monolithic oscillator/power driver with 3.3V or 5V power source. Multiple output voltages can be achieved depending on the diode circuit and transformer selected. For more information, pertaining to the MAX253/MAX845 please contact Maxim at (408) 737-7600. Maxim is a registered trademark of Maxim Integrated Products.

**Bridge Rectifier Circuit**

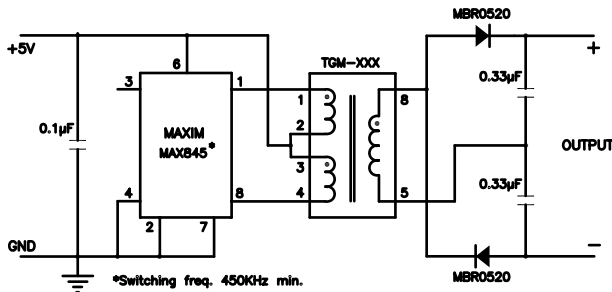


\*Switching freq. 450KHz min.

**Output Voltages**

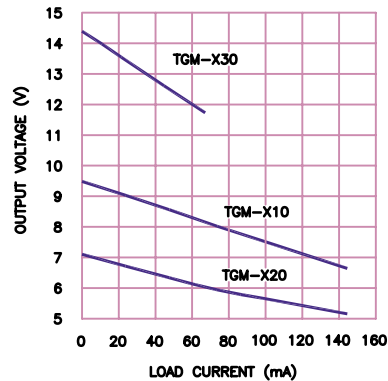


**Doubler Circuit**

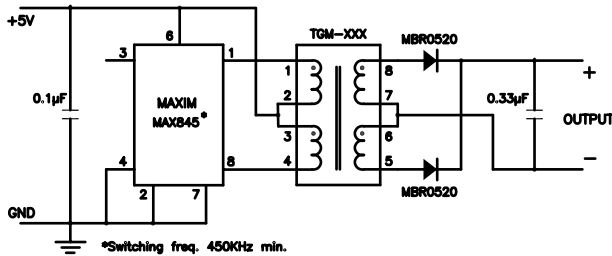


\*Switching freq. 450KHz min.

**Output Voltages**

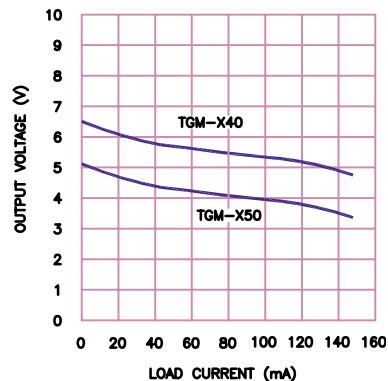


**Full Wave Rectifier Circuit**



\*Switching freq. 450KHz min.

**Output Voltages**



Компания «Life Electronics» занимается поставками электронных компонентов импортного и отечественного производства от производителей и со складов крупных дистрибьюторов Европы, Америки и Азии.

С конца 2013 года компания активно расширяет линейку поставок компонентов по направлению коаксиальный кабель, кварцевые генераторы и конденсаторы (керамические, пленочные, электролитические), за счёт заключения дистрибьюторских договоров

Мы предлагаем:

- Конкуренспособные цены и скидки постоянным клиентам.
- Специальные условия для постоянных клиентов.
- Подбор аналогов.
- Поставку компонентов в любых объемах, удовлетворяющих вашим потребностям.
- Приемлемые сроки поставки, возможна ускоренная поставка.
- Доставку товара в любую точку России и стран СНГ.
- Комплексную поставку.
- Работу по проектам и поставку образцов.
- Формирование склада под заказчика.
- Сертификаты соответствия на поставляемую продукцию (по желанию клиента).
- Тестирование поставляемой продукции.
- Поставку компонентов, требующих военную и космическую приемку.
- Входной контроль качества.
- Наличие сертификата ISO.

В составе нашей компании организован Конструкторский отдел, призванный помогать разработчикам, и инженерам.

Конструкторский отдел помогает осуществить:

- Регистрацию проекта у производителя компонентов.
- Техническую поддержку проекта.
- Защиту от снятия компонента с производства.
- Оценку стоимости проекта по компонентам.
- Изготовление тестовой платы монтаж и пусконаладочные работы.



Тел: +7 (812) 336 43 04 (многоканальный)  
Email: [org@lifeelectronics.ru](mailto:org@lifeelectronics.ru)