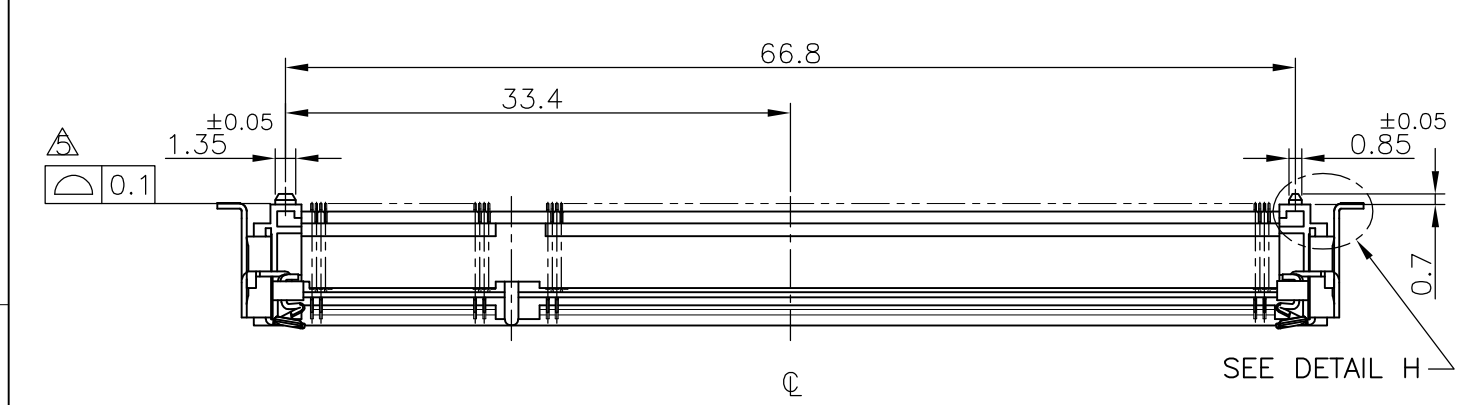
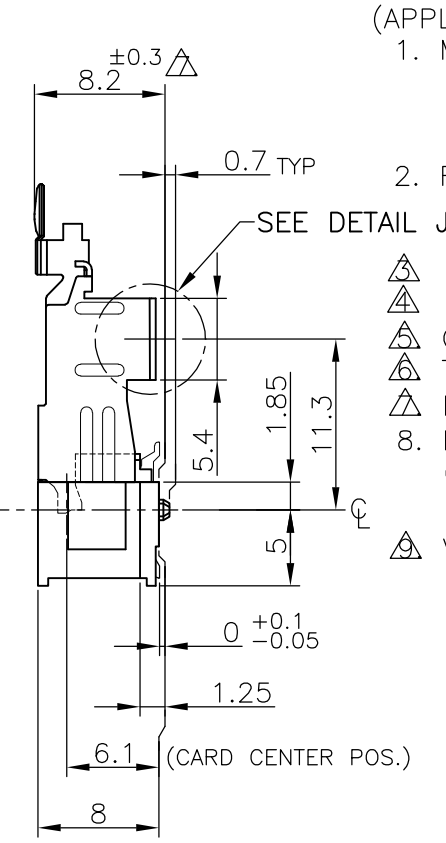
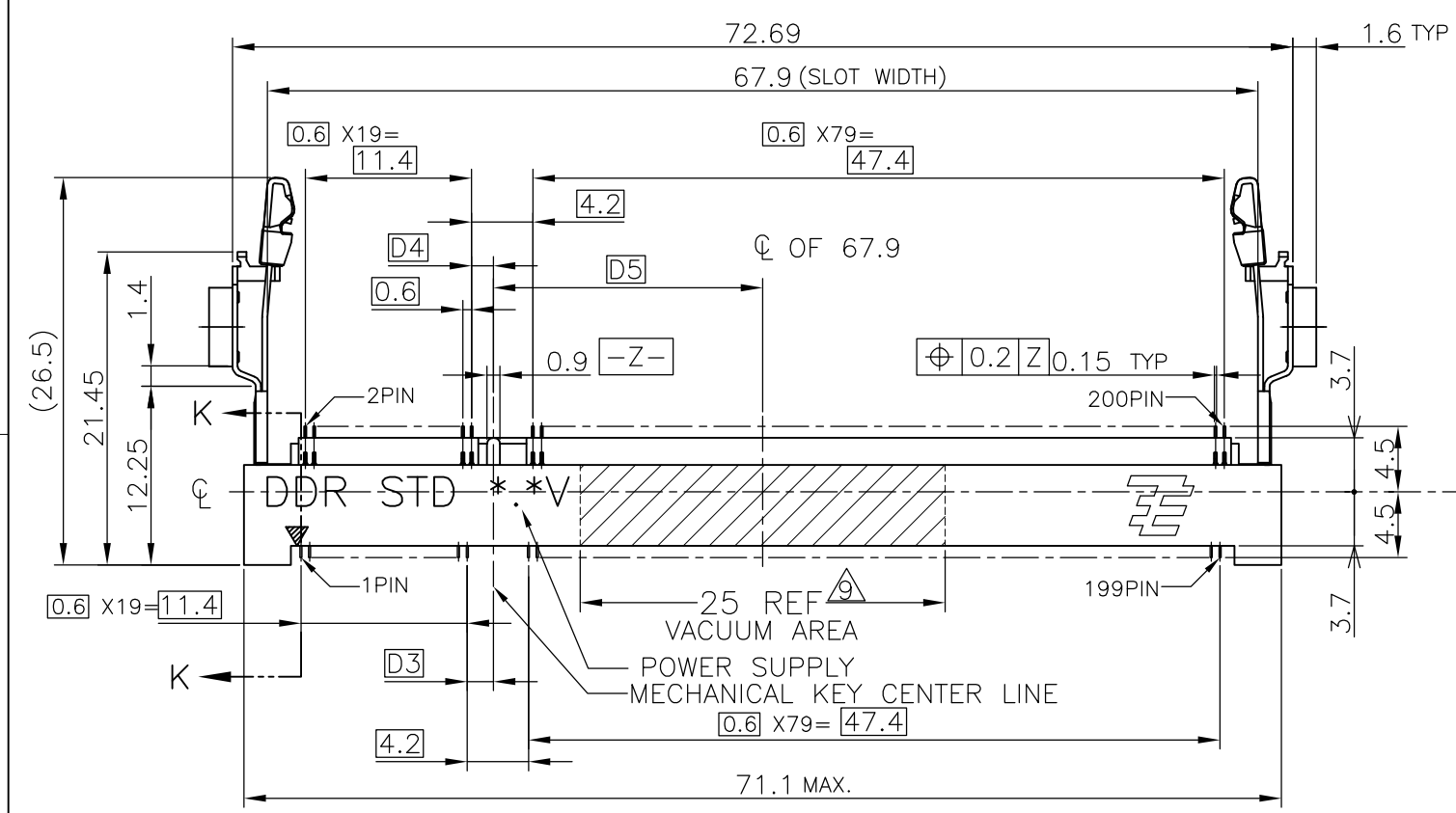
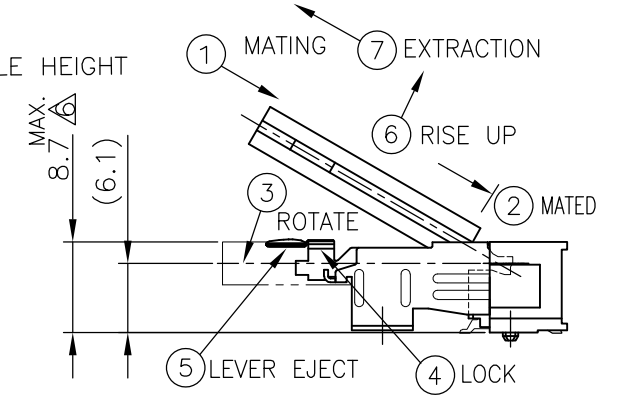
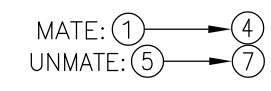


THIS DRAWING IS UNPUBLISHED. RELEASED FOR PUBLICATION FEB. 2005. ALL RIGHTS RESERVED.

| LOC | | DIST | | REVISIONS | | | |
|-----|---|------|-----|---------------------------|---------|-----|------|
| ES | / | P | LTR | DESCRIPTION | DATE | DWN | APVD |
| | | | G2 | REVISED PER ECO-11-005033 | 29MAR11 | RK | HMR |

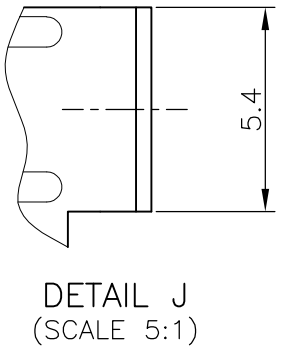
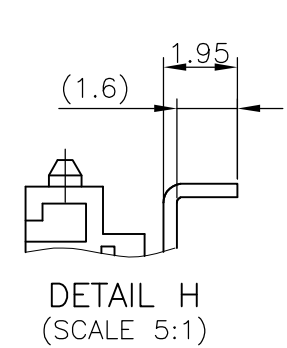
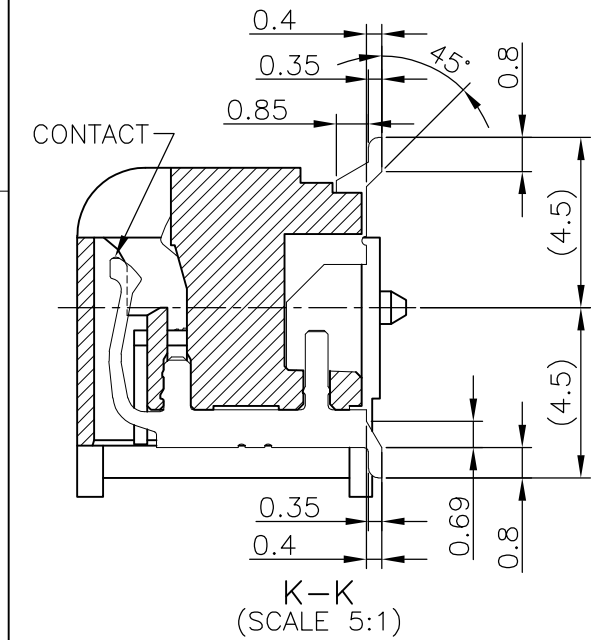


HOW TO MATE AND UNMATE



(APPLIED TO SHEET 1-2)

- MATERIAL ; HOUSING:HIGH TEMPERATURE THERMO PLASTIC UL94V-0, COLOR : BLACK
CONTACT : COPPER ALLOY
LOCK LEVER : STAINLESS STEEL
- FINISH ; CONTACT : Au PL. IN CONTACT AREA AND SOLDERING AREA ON NICKEL UNDER PL.
SOLDERING AREA(LOCK LEVER) : TIN PL.
- MECHANICAL KEY POSITION OF CONNECTOR SEE TABLE.
- TOLERANCES NON-CUMMURATIVE.
- COPLANARITY: 0.1MAX
- THE FLOATING VALUE BY SOLDERING IS NOT INCLUDED.
- NOT MATING CONDITION.
- IF THE MODULE DOESN'T INSERT AND LOCK IN THE LATCH SMOOTHLY, OPEN WIDE BOTH LATCHES BY MANUAL. AND THE MODULE MUST BE INSERTED AND LOCKED IN THE LATCH.
- VACUUM AREA MUST BE FLAT AND NO HOT MARK.



GENERAL TOLERANCE
 10 ≥ : ±0.2
 30 ≥ > 10: ±0.25
 100 ≥ > 30: ±0.3
 ANGLES: ±3°

| | | | | | | |
|----------------|---------------------|-------|-----|-----|-----|-----------|
| AVAILABLE | 1.8V (DDR2) | 17.55 | 2.4 | 2.7 | 200 | 1827341-4 |
| NOT AVAILABLE | 2.5V (DDR1) | 18.45 | 1.5 | 1.8 | 200 | - |
| TOOLING STATUS | POWER SUPPLY (TYPE) | D5 | D4 | D3 | POS | PART NO. |

THIS DRAWING IS A CONTROLLED DOCUMENT.

DWN T.FUMIKURA 04FEB05
 CHK
 APVD
 PRODUCT SPEC 108-5701
 APPLICATION SPEC

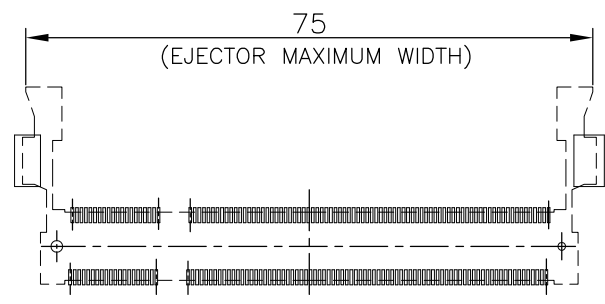
TE Connectivity
 NAME
 DDR1 & DDR2 SODIMM SOCKET 0.6mm PITCH
 200POS 8mm HEIGHT STANDARD TYPE
 (LATCH DIRECT SOLDERING TYPE)

SIZE A3 CAGE CODE 00779 DRAWING NO C-1827341 RESTRICTED TO

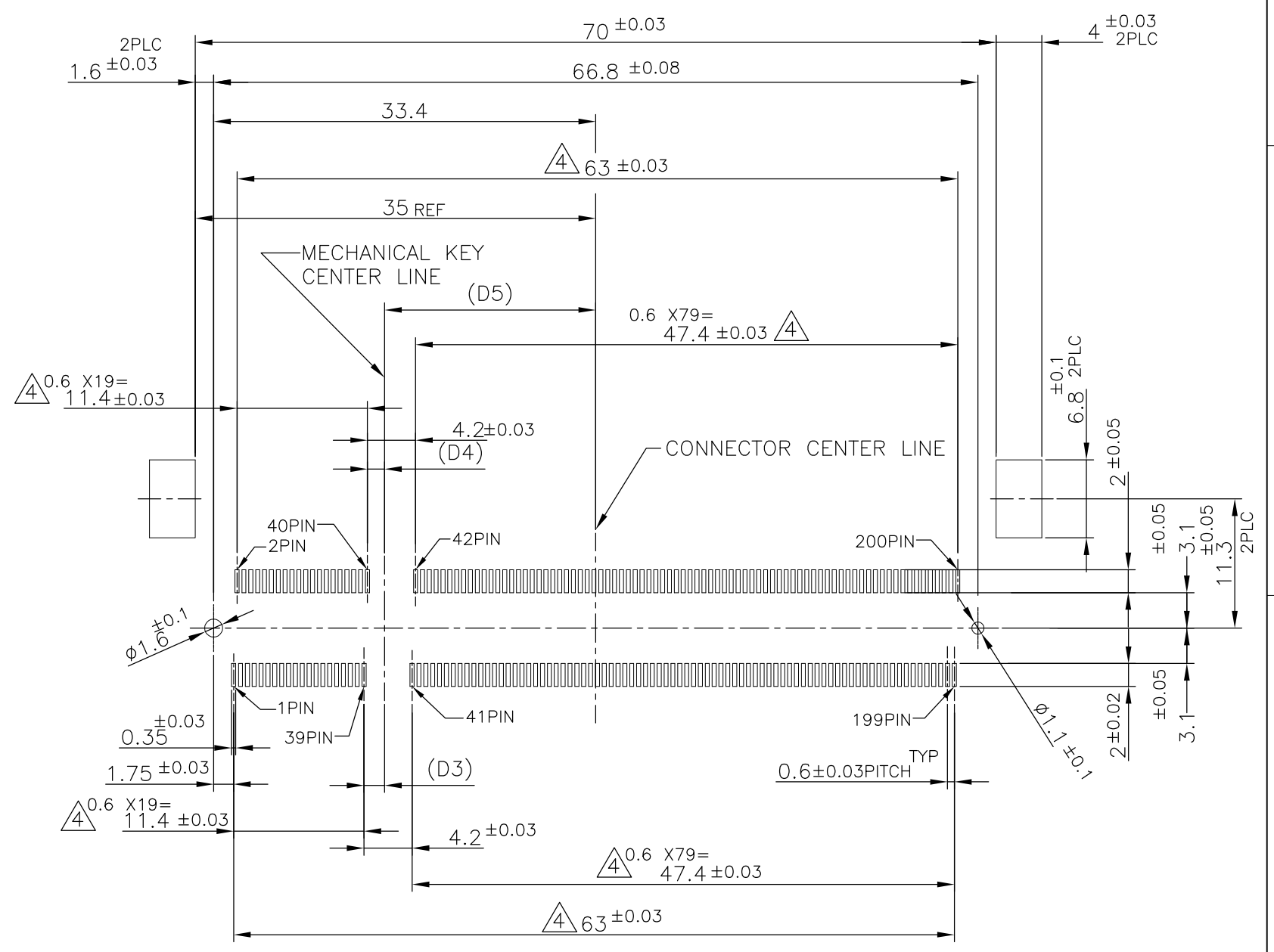
CUSTOMER DRAWING SCALE 2:1 SHEET 1 OF 4 REV G2

THIS DRAWING IS UNPUBLISHED. RELEASED FOR PUBLICATION FEB ,2005.
 © COPYRIGHT 2005 By - ALL RIGHTS RESERVED.

| LOC | DIST | REVISIONS | | | |
|-----|------|-------------|------|-----|------|
| P | LTR | DESCRIPTION | DATE | DWN | APVD |
| ES | | SEE SHEET 1 | - | - | - |



REAL SIZE (SCALE 1:1)

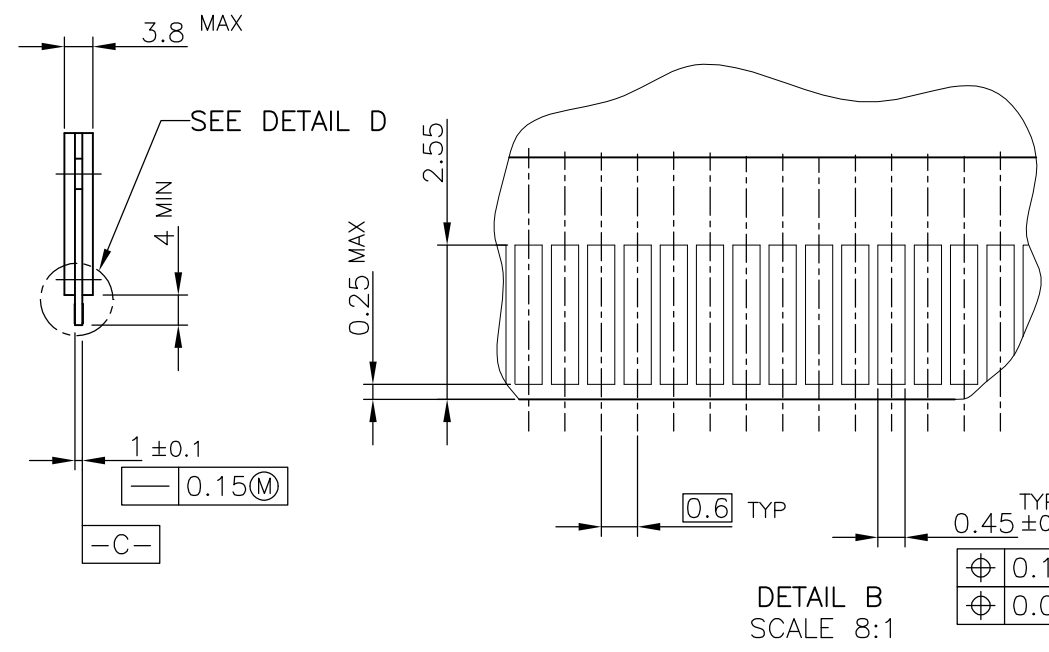
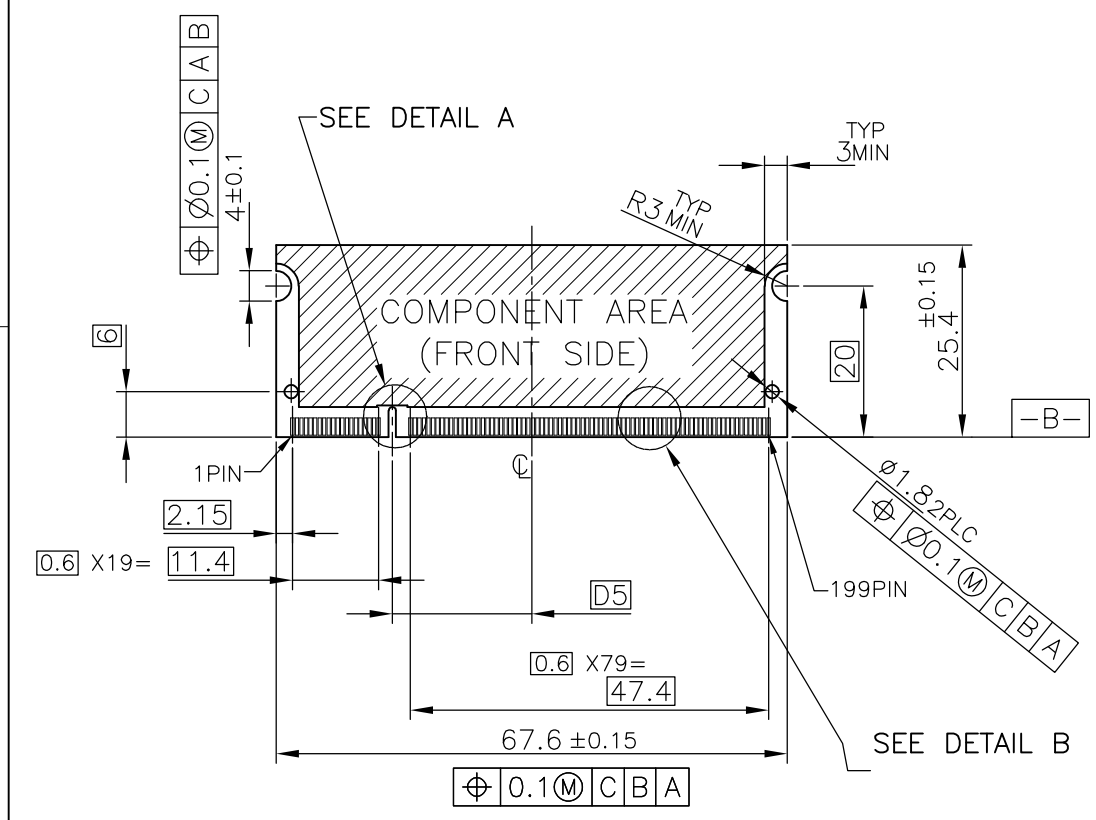


REFERENCE P.C.BOARD PATTERN LAYOUT FOR DUAL USE
(CONNECTOR MOUNTING SIDE)

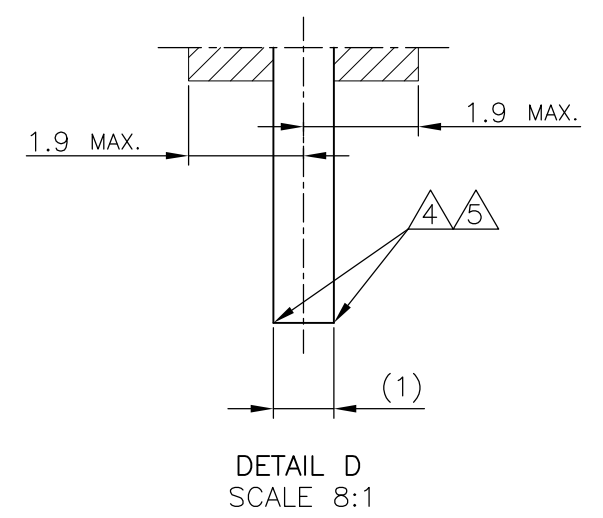
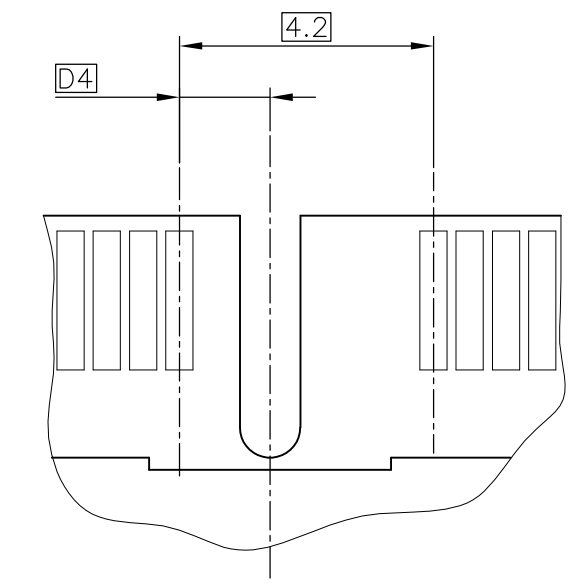
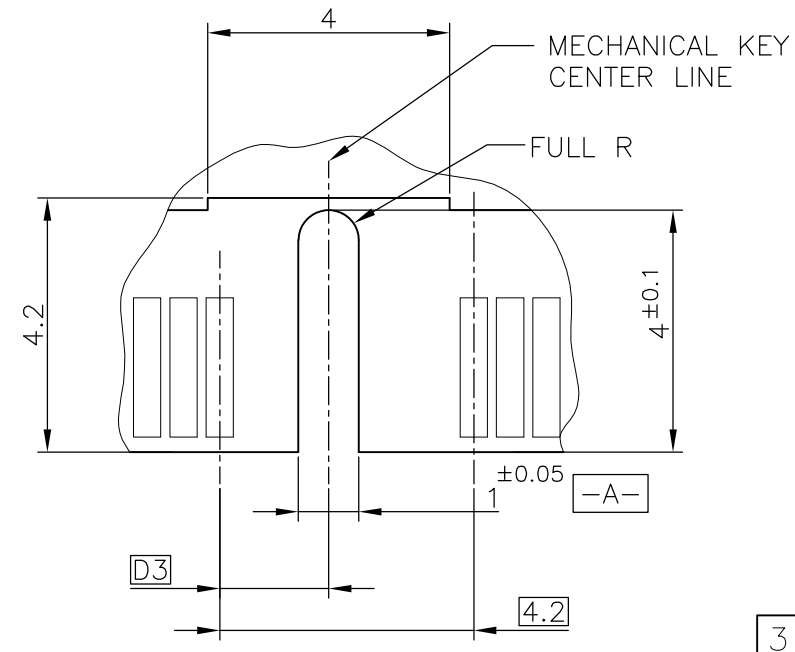
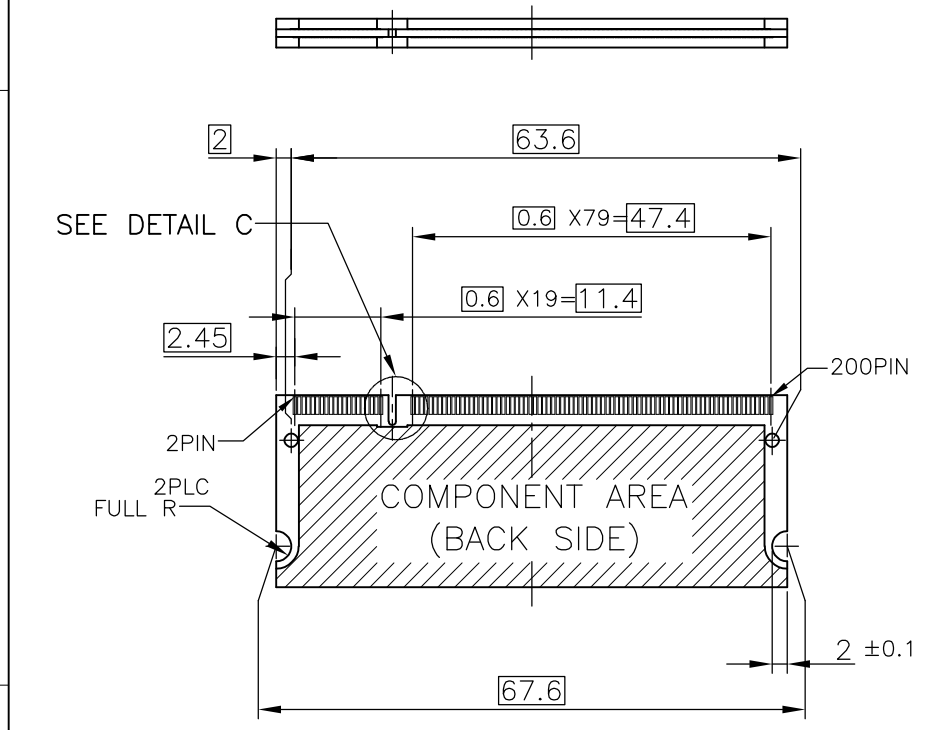
| | | | | | |
|--|--|------------------|---------------------------------------|-----------|------------|
| THIS DRAWING IS A CONTROLLED DOCUMENT. | | DWN | TE Connectivity | | |
| DIMENSIONS: MM | | CHK | | | |
| TOLERANCES UNLESS OTHERWISE SPECIFIED: | | APVD | NAME | | |
| 0 PLC ± | | PRODUCT SPEC | DDR1 & DDR2 SODIMM SOCKET 0.6mm PITCH | | |
| 1 PLC ± | | APPLICATION SPEC | 200POS 8mm HEIGHT STANDARD TYPE | | |
| 2 PLC ± | | WEIGHT | (LATCH DIRECT SOLDERING TYPE) | | |
| 3 PLC ± | | CUSTOMER DRAWING | SIZE | CAGE CODE | DRAWING NO |
| 4 PLC ± | | | A3 | 00779 | C-1827341 |
| ANGLES ± | | SCALE | RESTRICTED TO | | REV |
| FINISH | | 2:1 | SHEET 2 OF 4 | | G2 |

THIS DRAWING IS UNPUBLISHED. RELEASED FOR PUBLICATION FEB .2005.
 © COPYRIGHT 2005 By - ALL RIGHTS RESERVED.

| LOC | DIST | REVISIONS | | | |
|-----|------|-------------|------|-----|------|
| P | LTR | DESCRIPTION | DATE | DWN | APVD |
| ES | | SEE SHEET 1 | - | - | - |



- (APPLIED TO SHEET 3)
1. TOLERANCES ON ALL DIMENSIONS ±0.15 UNLESS OTHERWISE SPECIFIED.
 2. P.C.BOARD THICKNESS APPLIES ACROSS TABS AND INCLUDES PLATING AND/OR METALIZATION.
 3. FINISH OF PAD : GOLD PLATING 0.00076 MIN. OVER Ni PLATING 0.002MIN.
- △ NO BURR.
- △ CHAMFER 0.25 MAX x 45° IF EXIST.



| |
|-------|
| 31.75 |
| 25.4 |
| H |

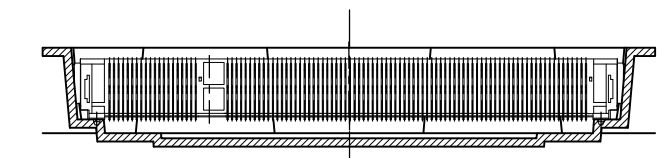
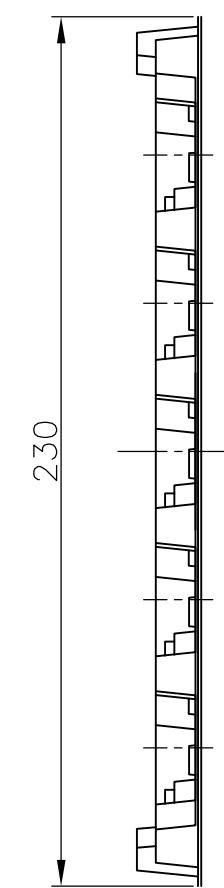
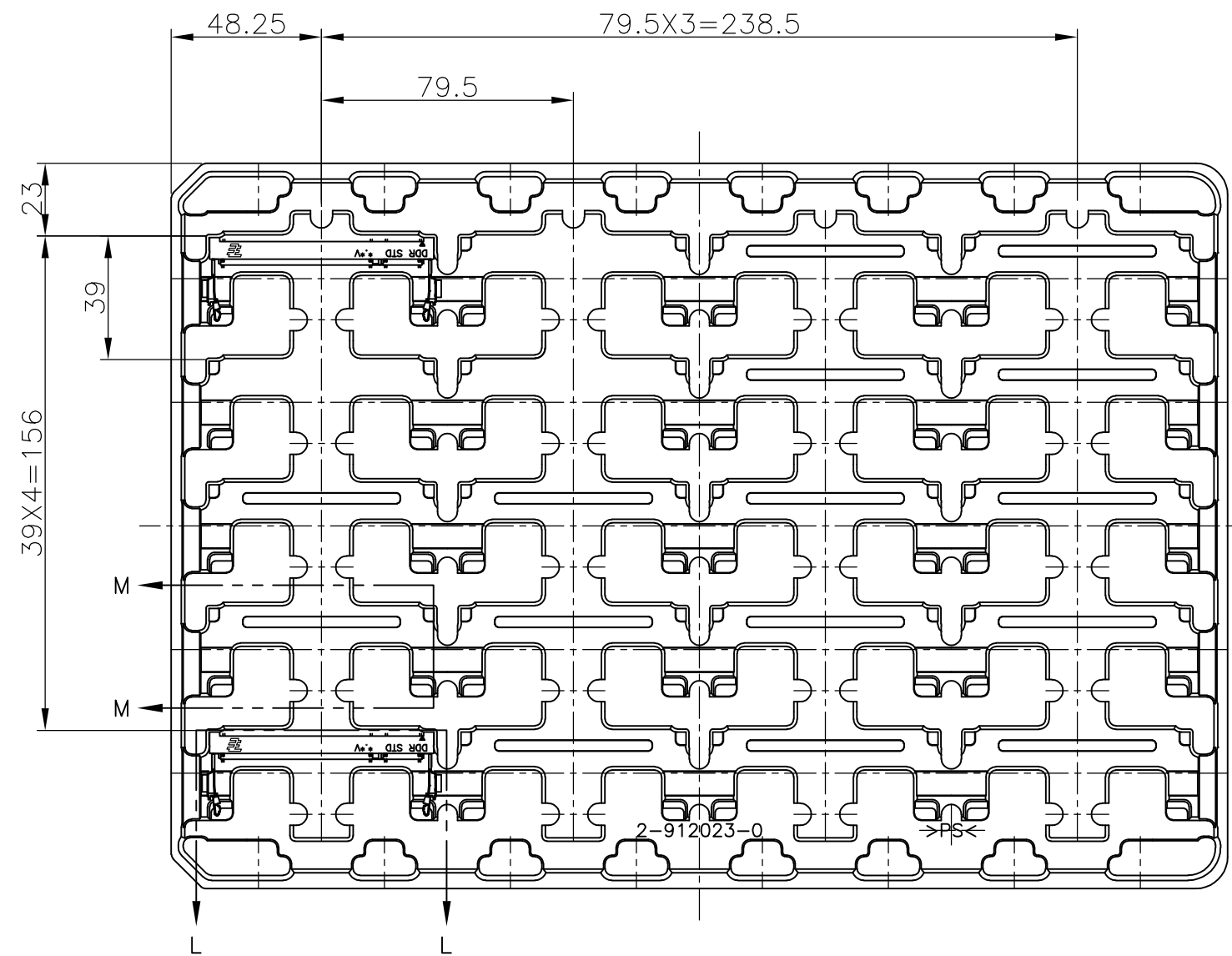
| | | | |
|--------------|-------|-----|-----|
| 1.8V | 17.55 | 2.4 | 2.7 |
| 2.5V | 18.45 | 1.5 | 1.8 |
| POWER SUPPLY | D5 | D4 | D3 |

推奨基板仕様
 RECOMMENDED MATING P.C.B CONFIGRATION

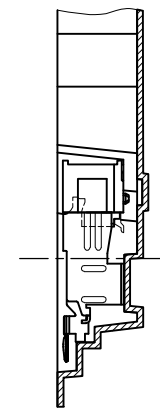
| | | | | | |
|--|--|------------------|--|---|--|
| THIS DRAWING IS A CONTROLLED DOCUMENT. | | DWN | | TE Connectivity | |
| DIMENSIONS: MM | | CHK | | | |
| TOLERANCES UNLESS OTHERWISE SPECIFIED: | | APVD | | | |
| 0 PLC ± 1 PLC ± 2 PLC ± 3 PLC ± 4 PLC ± ANGLES ± MATERIAL FINISH ± | | NAME | | | |
| MATERIAL | | PRODUCT SPEC | | DDR1 & DDR2 SODIMM SOCKET 0.6mm PITCH 200POS 8mm HEIGHT STANDARD TYPE (LATCH DIRECT SOLDERING TYPE) | |
| WEIGHT | | APPLICATION SPEC | | SIZE CAGE CODE DRAWING NO RESTRICTED TO A3 00779 C-1827341 | |
| CUSTOMER DRAWING | | SCALE 2:1 | | SHEET 3 OF 4 REV G2 | |

THIS DRAWING IS UNPUBLISHED. RELEASED FOR PUBLICATION FEB , 2005.
 © COPYRIGHT 2005 By - ALL RIGHTS RESERVED.

| LOC | | DIST | | REVISIONS | | | |
|-----|-----|-------------|--|-----------|-----|------|--|
| P | LTR | DESCRIPTION | | DATE | DWN | APVD | |
| | - | SEE SHEET 1 | | - | - | - | |

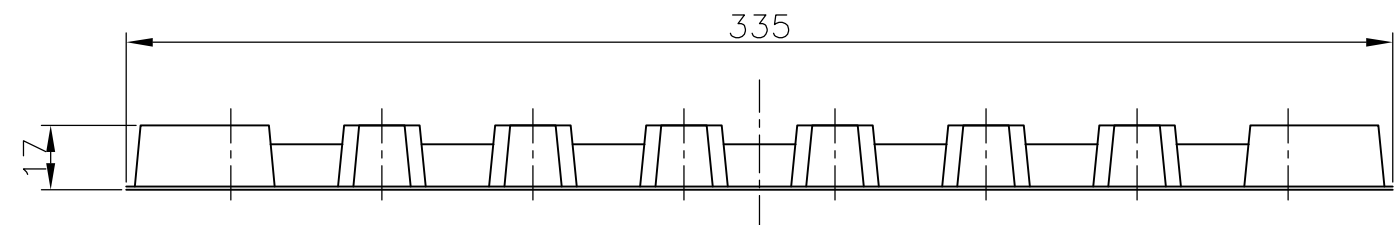


L-L
SCALE 1:1
(180DEG. ROTATE)



M-M
SCALE 1:1

1. THE DIRECTION OF EACH CONNECTOR ON A TRAY IS REFERRED TO THIS DRAWING.
2. GENERAL TOLERANCE: ±0.5



| | |
|-----------|-----------|
| 20EA/TRAY | 1827341-4 |
| QTY | P/N |

| | | | | | | |
|---|--|------------------|---|-----------|------------|---------------|
| THIS DRAWING IS A CONTROLLED DOCUMENT. | | DWN | TE Connectivity | | | |
| DIMENSIONS: MM | | CHK | | | | |
| | | APVD | | | | |
| TOLERANCES UNLESS OTHERWISE SPECIFIED: 0 PLC ± 1 PLC ± 2 PLC ± 3 PLC ± 4 PLC ± ANGLES ± FINISH | | NAME | | | | |
| MATERIAL | | PRODUCT SPEC | DDR1 & DDR2 SODIMM SOCKET 0.6mm PITCH 200POS 8mm HEIGHT STANDARD TYPE (LATCH DIRECT SOLDERING TYPE) | | | |
| | | APPLICATION SPEC | SIZE | CAGE CODE | DRAWING NO | RESTRICTED TO |
| | | WEIGHT | A3 | 00779 | C-1827341 | |
| CUSTOMER DRAWING | | | SCALE | SHEET | REV | |
| | | | 1:2 | 4 OF 4 | G2 | |

Компания «Life Electronics» занимается поставками электронных компонентов импортного и отечественного производства от производителей и со складов крупных дистрибьюторов Европы, Америки и Азии.

С конца 2013 года компания активно расширяет линейку поставок компонентов по направлению коаксиальный кабель, кварцевые генераторы и конденсаторы (керамические, пленочные, электролитические), за счёт заключения дистрибьюторских договоров

Мы предлагаем:

- Конкурентоспособные цены и скидки постоянным клиентам.
- Специальные условия для постоянных клиентов.
- Подбор аналогов.
- Поставку компонентов в любых объемах, удовлетворяющих вашим потребностям.
- Приемлемые сроки поставки, возможна ускоренная поставка.
- Доставку товара в любую точку России и стран СНГ.
- Комплексную поставку.
- Работу по проектам и поставку образцов.
- Формирование склада под заказчика.
- Сертификаты соответствия на поставляемую продукцию (по желанию клиента).
- Тестирование поставляемой продукции.
- Поставку компонентов, требующих военную и космическую приемку.
- Входной контроль качества.
- Наличие сертификата ISO.

В составе нашей компании организован Конструкторский отдел, призванный помогать разработчикам, и инженерам.

Конструкторский отдел помогает осуществить:

- Регистрацию проекта у производителя компонентов.
- Техническую поддержку проекта.
- Защиту от снятия компонента с производства.
- Оценку стоимости проекта по компонентам.
- Изготовление тестовой платы монтаж и пусконаладочные работы.



Тел: +7 (812) 336 43 04 (многоканальный)
Email: org@lifeelectronics.ru