

## CHERRY MX SILENT RGB RED



Models may vary from the image shown

### Silent CHERRY MX-RGB keyswitch with patented (patent pending) noise reduction

Uncompromising. CHERRY MX SILENT RGB keyswitch. The CHERRY original in its quietest and most illuminant form. Patented (patent pending) noise reduction combined with 16.7 million colours and worldwide unique Gold Crosspoint technology.

### Key benefits

- RGB red switch: Without pressure point, linear light actuation - switching function with a defined force of approx. 45 cN without contact feedback
- Noise optimised MX-RGB keyswitch version optimised for use with SMD LEDs (RGB or single colour)
- The only solution from a single source: patented (patent pending) noise reduction with integrated 2-component stem and worldwide unique Gold Crosspoint contact technology
- Minimises bottom-out and top out noise.
- Even illumination with optimised, transparent casing and scattering surface including lens.
- Option to use all 16.7 million RGB colours in high luminosity (scope of supply does not include LED)
- SMD LEDs directly mounted on the circuit board for cost-efficient, fully automated production
- Noise reduction takes place in the glass-fibre reinforced base, regardless of 3rd party solutions on the keyswitch.
- Precision "Made in Germany" with a short bounce time of < 5 ms
- Self-cleaning contacts, resistant to dust and dirt
- Over 50 million strokes per keyswitch without compromising

on quality.

- Long-lasting safe switching performance in the renowned "Original CHERRY quality" tried-and-tested a billion times over.

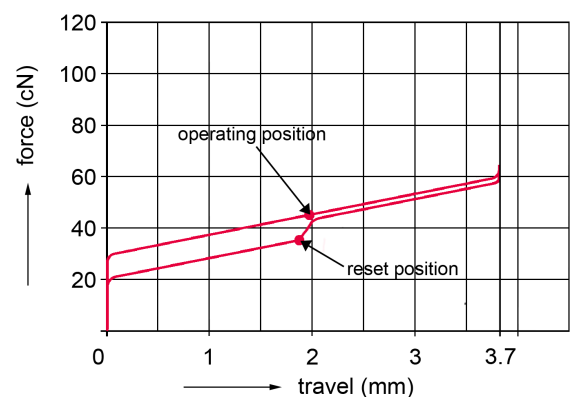
### Technical Data:

#### Housing colour:

Transparent cover, plain base

#### Keymodule:

- Switch type: MX
- Protection class: IP40
- Operation characteristics: RED SWITCH SILENT Linear (45 cN)



- Fastening: Product dependant, see table "Models"
- Switching voltage: 12 V AC/DC max.
- Switching current: 10 mA AC/DC max.
- Dielectric strength: 500 V / 50Hz
- Durability: > 50 million actuations
- Contact configuration: Single-pole contact
- Actuator travel: 3.7 -0.4 mm
- Pretravel: 1.9 ± 0.6 mm
- Initial force: 30 cN min.
- Actuation force: 45 ± 15 cN
- Bounce time: < 5 ms (during actuation with 0,4 m/s)
- Standard lead spacing: 19.05 mm (16 mm min.)
- Lighting: SMD LED can be mounted directly on the circuit board (not included in the module), opening for SMD LED in the base.
- Decoupling diode: no
- Wire jumper: no
- Insulation materials: Thermoplastics (min.UL 94 HB)
- Spring: Stainless steel
- Contacts: High-quality gold alloy
- Storage Temperature: -40°C to 70°C
- Operating Temperature: -10°C to 70°C
- Humidity: Storage: average <50% max. 3 months / 75% max. 15 days, operation: 5% to 95% without condensation

For detailed information and the layout of the details described above, please do not hesitate to ask for our technical specifications and drawing.

**Warranty:**

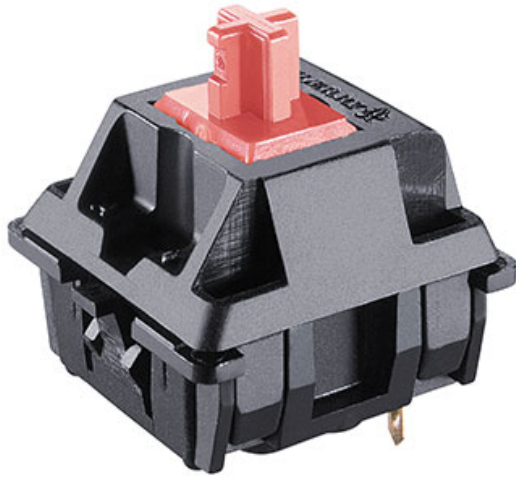
2 years

Errors, technical changes and delivery possibilities excepted.  
Technical information refers only to the specifications of the  
products. Features may differ from the information provided.

**Models:**

	<b>Product name</b>	<b>Order number</b>	<b>Fastening</b>
1	CHERRY MX SILENT RGB RED	MX3A-L1NA	Snap fastening in frame
2	CHERRY MX SILENT RGB RED	MX3A-L1NB	Fixing pins in the printed circuit board

## CHERRY MX SILENT RED



*Models may vary from the image shown*

### Silent CHERRY MX keyswitch with patented (patent pending) noise reduction

Silent CHERRY MX keyswitch - the original with no compromises. The patented (patent pending) noise reduction reliably minimises any operating noises. This is the most silent form of quality, precision and reliability.

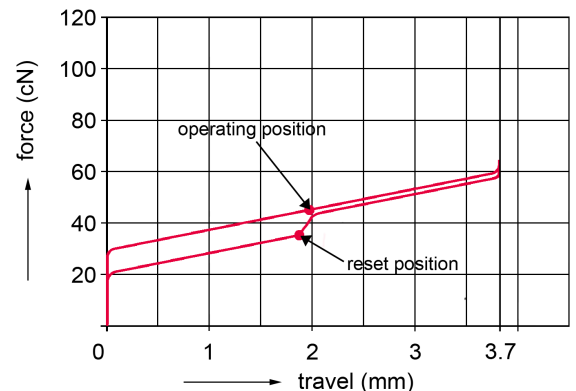
### Key benefits

- Red switch: Without pressure point, linear light actuation - switching function with a defined force of approx. 45 cN without contact feedback
- Noise-optimised MX keyswitch version with the worldwide unique Gold Crosspoint contact technology.
- The only solution from a single source: patented (patent pending) noise reduction with integrated 2-component stem.
- Reliable reduction of bottom-out and top out noise
- Noise reduction takes place in the glass-fibre reinforced base, regardless of 3rd party solutions on the keyswitch.
- Precision "Made in Germany" with a short bounce time of < 5 ms
- Self-cleaning contacts, resistant to dust and dirt
- Over 50 million strokes per keyswitch without compromising on quality.
- Long-lasting safe switching performance in the renowned "Original CHERRY quality" tried-and-tested a billion times over.

### Technical Data:

#### Keymodule:

- Switch type: MX
- Protection class: IP40
- Operation characteristics: RED SWITCH SILENT Linear (45 cN)



- Fastening: Product dependant, see table "Models"
- Switching voltage: 12 V AC/DC max.
- Switching current: 10 mA AC/DC max.
- Dielectric strength: 500 V / 50Hz
- Durability: > 50 million actuations
- Contact configuration: Single-pole contact
- Actuator travel: 3.7 -0.4 mm
- Pretravel: 1.9 ± 0.6 mm
- Initial force: 30 cN min.
- Actuation force: 45 ± 15 cN
- Bounce time: < 5 ms (during actuation with 0,4 m/s)
- Standard lead spacing: 19.05 mm (16 mm min.)
- Decoupling diode: Product dependant, see table "Models"
- Wire jumper: Product dependant, see table "Models"
- Insulation materials: Thermoplastics (min.UL 94 HB)
- Spring: Stainless steel
- Contacts: High-quality gold alloy
- Storage Temperature: -40°C to 70°C
- Operating Temperature: -10°C to 70°C
- Humidity: Storage: average <50% max. 3 months / 75% max. 15 days, operation: 5% to 95% without condensation

*For detailed information and the layout of the details described above, please do not hesitate to ask for our technical specifications and drawing.*

#### Warranty:

2 years

Errors, technical changes and delivery possibilities excepted. Technical information refers only to the specifications of the products. Features may differ from the information provided.

## Models:

	Product name	Order number	Fastening	Decoupling diode	Wire jumper
1	CHERRY MX SILENT RED	MX3A-L1DN	Snap fastening in frame	yes	no
2	CHERRY MX SILENT RED	MX3A-L1DW	Fixing pins in the printed circuit board	yes	no
3	CHERRY MX SILENT RED	MX3A-L1JW	Fixing pins in the printed circuit board	no	yes
4	CHERRY MX SILENT RED	MX3A-L1NN	Snap fastening in frame	no	no
5	CHERRY MX SILENT RED	MX3A-L1NW	Fixing pins in the printed circuit board	no	no

Компания «Life Electronics» занимается поставками электронных компонентов импортного и отечественного производства от производителей и со складов крупных дистрибьюторов Европы, Америки и Азии.

С конца 2013 года компания активно расширяет линейку поставок компонентов по направлению коаксиальный кабель, кварцевые генераторы и конденсаторы (керамические, пленочные, электролитические), за счёт заключения дистрибьюторских договоров

Мы предлагаем:

- Конкурентоспособные цены и скидки постоянным клиентам.
- Специальные условия для постоянных клиентов.
- Подбор аналогов.
- Поставку компонентов в любых объемах, удовлетворяющих вашим потребностям.
- Приемлемые сроки поставки, возможна ускоренная поставка.
- Доставку товара в любую точку России и стран СНГ.
- Комплексную поставку.
- Работу по проектам и поставку образцов.
- Формирование склада под заказчика.
- Сертификаты соответствия на поставляемую продукцию (по желанию клиента).
- Тестирование поставляемой продукции.
- Поставку компонентов, требующих военную и космическую приемку.
- Входной контроль качества.
- Наличие сертификата ISO.

В составе нашей компании организован Конструкторский отдел, призванный помогать разработчикам, и инженерам.

Конструкторский отдел помогает осуществить:

- Регистрацию проекта у производителя компонентов.
- Техническую поддержку проекта.
- Защиту от снятия компонента с производства.
- Оценку стоимости проекта по компонентам.
- Изготовление тестовой платы монтаж и пусконаладочные работы.



Тел: +7 (812) 336 43 04 (многоканальный)

Email: [org@lifeelectronics.ru](mailto:org@lifeelectronics.ru)