

Fiber Optic Isolator - Photologic[®] Sensor



OPI1290 Series

Features:

- Opaque plastic housings
- High noise immunity
- IR LED with Phototransistor Output
- 0.05" (1.27 mm) lead spacing
- Data Transfer through plastic fiber optic cable
- Isolation voltage 15 KV (OPI1290-032), Longer versions higher



Description:

Each **OPI1290** consists of an IR LED and a Photologic[®] Totem-Pole output sensor, which are housed in separate opaque molded plastic housings and coupled by plastic fiber optic cable. The heavy-duty opaque housing shields the optical signal from dust, making this series of devices ideal for dust contaminated environments.

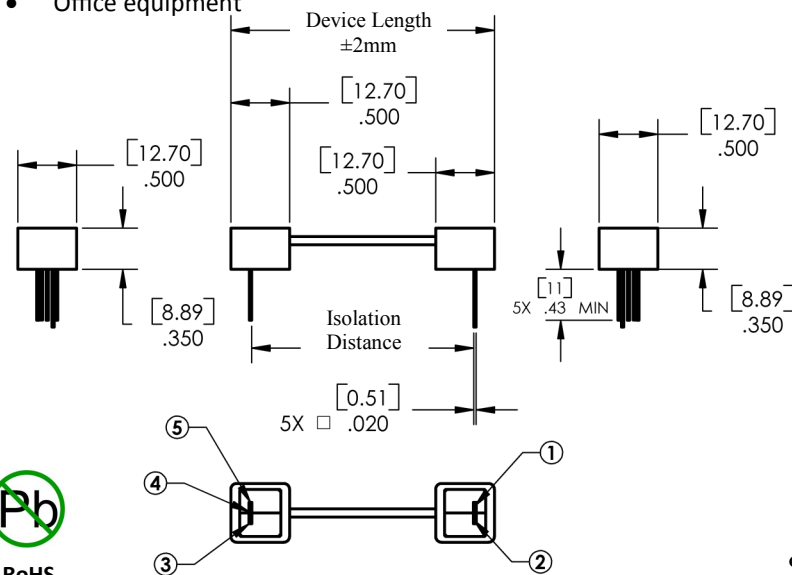
The **OPI1290** series are designed for applications that require high voltage isolation between input and output or signal communication over short distances. Depending on the length of the fiber optic cable, the emitter does not have to be optically in-line with the sensor. The isolation voltage is greater than 10 K volts per inch (Isolation distance between components) for all versions of the **OPI1290**.

Custom electrical, wire and cabling and connectors are available. Contact your local representative or OPTEK for more information.

Applications:

- Requiring High Voltage isolation between input and output
- Electrical isolation in dirty environments
- Industrial equipment
- Medical equipment
- Office equipment

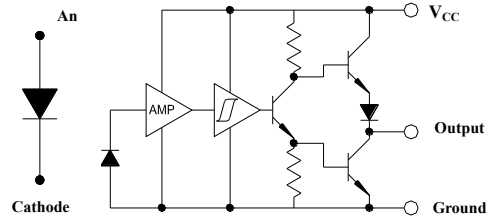
| Ordering Information | | | | |
|----------------------|-------------------------|--------------------|---------------------|-----------------|
| Part Number | Isolation Distance ±2mm | Device Length ±2mm | LED Peak Wavelength | Lead Length |
| OPI1290-032 | 1.42" [36 mm] | 1.80" [45.8 mm] | 890 nm | 0.45" [11.4 mm] |
| OPI1290-066 | 2.76" [70 mm] | 3.15" [80.0 mm] | | |
| OPI1290-080 | 3.31" [84 mm] | 3.69" [93.8 mm] | | |



| Pin # | LED |
|-------|-----------------|
| 1 | Anode |
| 2 | Cathode |
| 3 | V _{CC} |
| 4 | Output |
| 5 | Ground |



RoHS



General Note

TT Electronics reserves the right to make changes in product specification without notice or liability. All information is subject to TT Electronics' own data and is considered accurate at time of going to print.

TT Electronics | OPTEK Technology
1645 Wallace Drive, Carrollton, TX 75006 | Ph: +1 972 323 2200
www.ttelectronics.com | www.optekinc.com

Absolute Maximum Ratings ($T_A=25^\circ\text{C}$ unless otherwise noted)

| | |
|---|-----------------------|
| Storage Temperature Range (note 3) | -40° C to +80° C |
| Operating Temperature Range (note 3) | -20° C to +75° C |
| Lead Soldering Temperature [1/16 inch (1.6 mm) from case for 5 seconds with soldering iron] | 260° C ⁽¹⁾ |
| Power Dissipation ⁽²⁾ | 100 mW |

Electrical Characteristics ($T_A = 25^\circ\text{C}$ unless otherwise noted)

| SYMBOL | PARAMETER | MIN | TYP | MAX | UNITS | TEST CONDITIONS |
|---|----------------------------|-----|-----|-----|---------------|----------------------|
| LED (See OP240 for additional information) | | | | | | |
| V_F | On-State Collector Current | 1.2 | - | 2.3 | V | $I_F = 20\text{ mA}$ |
| I_R | Collector-Dark Current | - | - | 80 | μA | $V_R = 3.0\text{ V}$ |

Photologic® Sensor (See OP550 for additional information)

| SYMBOL | PARAMETER | MIN | TYP | MAX | UNITS | TEST CONDITIONS |
|-------------------------|--|------|------|------|------------------|---|
| V_{CC} | Operating Supply Voltage | 4.5 | - | 16 | V | - |
| | Peak-to-Peak V_{CC} Ripple Necessary to Cause False Triggering of Output | - | - | 2 | V | $V_{CC} = 5\text{ V DC}$, $f = \text{DC to } 50\text{ MHz}$ |
| I_{CC} | Supply Current ⁽⁴⁾ | - | 8 | 15 | mA | $E_E = 0\text{ or } 3\text{ mW/cm}^2$, $V_{CC} = 5.5\text{ V}$ |
| $E_{eT(+)}$ | Positive-Going Threshold Irradiance ⁽²⁾ | .25 | - | 2.4 | mW/cm^2 | $V_{CC} = 5\text{ V}$, $T_A = 25^\circ\text{ C}$ |
| $E_{eT(+)} / E_{eT(-)}$ | Hysteresis Ratio | 1.50 | 2 | 2.5 | - | - |
| V_{OH} | Operating Supply Voltage | 2.1 | - | - | V | $I_{OH} = -1\ \mu\text{A}$, $E_E = 1\text{ mW/cm}^2$ |
| V_{OL} | Low Level Output Voltage | - | 0.25 | 0.4 | V | $V_{CC} = 4.5\text{ V}$, $I_{OL} = 12.8\text{ mA}$, $E_E = 0$ |
| I_{OS} | Short Circuit Output Current | -20 | -55 | -100 | mA | $V_{CC} = 5.5\text{ V}$, Output = GND, $E_E = 3\text{ mW/cm}^2$ |
| I_{OH} | High Level Output Current ⁽²⁾ | - | 1 | 100 | μA | $V_{CC} = 4.5\text{ V}$, $V_{OH} = 30\text{ V}$, $E_E = 3\text{ mW/cm}^2$ |
| T_R & T_F | Output Rise & Fall Time | - | 25 | 70 | ns | $V_{CC} = 5\text{ V}$, $T_A = 25^\circ\text{ C}$, $E_E = 0\text{ or } 3\text{ mW/cm}^2$, $f = 10\text{ kHz}$, DC = 50% RL = 8 TTL loads |
| $tp_{eT(+)}$ | Propagation Delay Positive-Going | - | 2.5 | 5.0 | μs | $V_{CC} = 5\text{ V}$, $T_A = 25^\circ\text{ C}$, $E_E = 0\text{ or } 3\text{ mW/cm}^2$, $R_L = 8\text{ TTL loads}$, $f = 10\text{ kHz}$, DC = 50% |
| $tp_{eT(-)}$ | Propagation Delay Negative-Going | - | 2.5 | 5.0 | μs | $V_{CC} = 5\text{ V}$, $T_A = 25^\circ\text{ C}$, $E_E = 0\text{ or } 3\text{ mW/cm}^2$, $R_L = 360\ \Omega$, $f = 10\text{ kHz}$, DC = 50% |
| t_{PLH} , t_{PHL} | Propagation Delay (Low-High/High-Low) | - | 5.0 | - | μs | DC = 50%, $R_L = 10\text{ TTL Loads}$ |

Notes:

(1) Derate linearly 2.5 mW/° C above 25° C for all devices in the OPL550, OPL551, OPL560, OPL561, OPL562 and OPL563 series.

(2) Irradiance measurements are made with $\lambda_i = 935\text{ nm}$.

(3) Storage and Operating temperature values are based on the plastic optical interface temperature ratings. Please reference UL1577 and UL file AVLVLZ.E89328

General Note

TT Electronics reserves the right to make changes in product specification without notice or liability. All information is subject to TT Electronics' own data and is considered accurate at time of going to print.

TT Electronics | OPTEK Technology
1645 Wallace Drive, Carrollton, TX 75006 | Ph: +1 972 323 2200
www.ttelectronics.com | www.optekinc.com

Компания «Life Electronics» занимается поставками электронных компонентов импортного и отечественного производства от производителей и со складов крупных дистрибьюторов Европы, Америки и Азии.

С конца 2013 года компания активно расширяет линейку поставок компонентов по направлению коаксиальный кабель, кварцевые генераторы и конденсаторы (керамические, пленочные, электролитические), за счёт заключения дистрибьюторских договоров

Мы предлагаем:

- Конкурентоспособные цены и скидки постоянным клиентам.
- Специальные условия для постоянных клиентов.
- Подбор аналогов.
- Поставку компонентов в любых объемах, удовлетворяющих вашим потребностям.
- Приемлемые сроки поставки, возможна ускоренная поставка.
- Доставку товара в любую точку России и стран СНГ.
- Комплексную поставку.
- Работу по проектам и поставку образцов.
- Формирование склада под заказчика.
- Сертификаты соответствия на поставляемую продукцию (по желанию клиента).
- Тестирование поставляемой продукции.
- Поставку компонентов, требующих военную и космическую приемку.
- Входной контроль качества.
- Наличие сертификата ISO.

В составе нашей компании организован Конструкторский отдел, призванный помогать разработчикам, и инженерам.

Конструкторский отдел помогает осуществить:

- Регистрацию проекта у производителя компонентов.
- Техническую поддержку проекта.
- Защиту от снятия компонента с производства.
- Оценку стоимости проекта по компонентам.
- Изготовление тестовой платы монтаж и пусконаладочные работы.



Тел: +7 (812) 336 43 04 (многоканальный)

Email: org@lifeelectronics.ru