

CONTROL KNOBS, MOLDED PHENOLIC

FEATURES

- Cosmetic black gloss finish.
- Anti-static plastic.
- Positive retention #6-32 set screws.
- Fits 1/8" dia. & 1/4" dia. shafts.
- Functionally rugged.
- Special designs available.

MATERIALS

Knob:

Custom molded phenolic, color black.

Inlay:

Spun aluminum

Threaded Insert:

Brass.

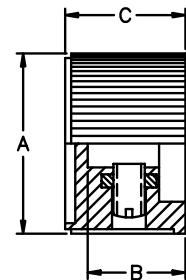
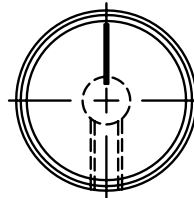
Setscrew:

Heat treated high alloy steel with cup point and hex head, or slotted head. Note: 1 or 2 supplied, depending on model.

Notes: Dimensions in inches & (millimeters). Shaft size is last 3 digits of Model No.

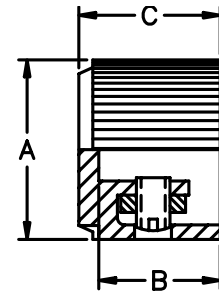
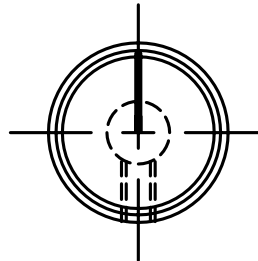
SPECIFICATIONS SUBJECT TO CHANGE WITHOUT NOTICE.

41001 SERIES Straight knurl line indicator on top



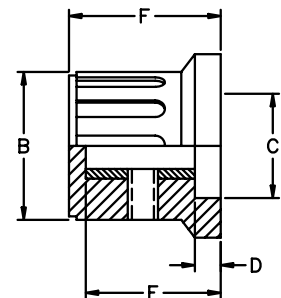
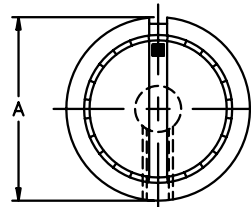
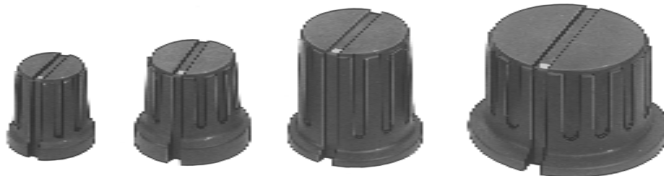
MODEL	A	B	C
410011B1/8	.787 (20.0)	.512 (13.0)	.630 (16.0)
410011B1/4	.787 (20.0)	.512 (13.0)	.630 (16.0)
410012B1/4	.945 (24.0)	.512 (13.0)	.630 (16.0)

41003 SERIES Straight knurl with aluminum cap & line indicator on top



MODEL	A	B	C
410031B1/8	.551 (14.0)	.472 (12.0)	.551 (14.0)
410032B1/4	.716 (18.2)	.496 (12.6)	.555 (14.1)

41004 SERIES Ribbed without inlay with square indicator on top



Note: This series has matte black finish

MODEL	A	B	C	D	E	F
*410041B1/8	.610 (15.5)	.500 (12.7)	.374 (9.5)	.122 (3.1)	.472 (12)	.583 (14.8)
410041B1/4	.610 (15.5)	.500 (12.7)	.374 (9.5)	.122 (3.1)	.472 (12)	.583 (14.8)
410042B1/4	.799 (20.3)	.646 (16.4)	.443 (11.2)	.130 (3.2)	.575 (14.6)	.618 (15.7)
410043B1/4	.953 (24.2)	.772 (19.6)	.551 (14)	.209 (5.3)	.705 (17.9)	.784 (19.9)
**410044B1/4	1.402 (35.6)	1.106 (28.1)	.898 (22.8)	.078 (2.0)	.574 (14.6)	.722 (18.3)

* - This model has one #4-40 set screw.

** - This model has two #6-32 set screws.

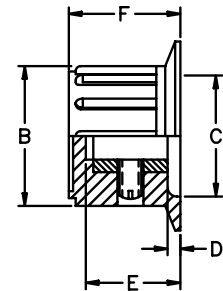
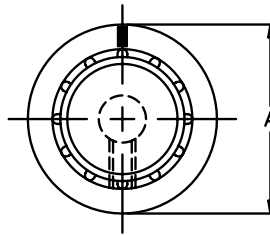
Notes: Dimensions in inches & (millimeters). Shaft size is last 3 digits of Model No.

MPK SERIES Straight knurl with white dot indicator on skirt



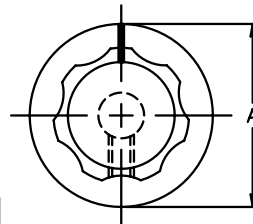
MODEL	A	B	C	D	E	F
MPK50B1/8	.750 (19.0)	.571 (14.5)	.580 (14.7)	.055 (1.4)	.461 (11.7)	.550 (14.0)
MPK50B1/4	.750 (19.0)	.571 (14.5)	.580 (14.7)	.055 (1.4)	.461 (11.7)	.550 (14.0)
MPK70B1/4	1.000 (25.4)	.740 (18.7)	.710 (18.0)	.080 (2.0)	.500 (12.7)	.580 (15.0)
MPK90B1/4	1.250 (31.7)	.988 (25.1)	.870 (22.1)	.090 (2.3)	.460 (11.7)	.590 (15.0)

MPKA SERIES Ribbed with white line indicator on skirt



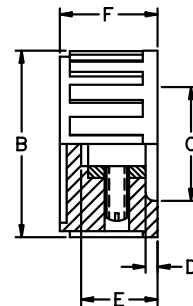
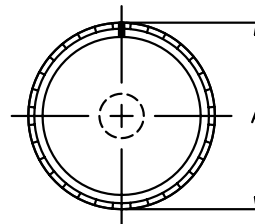
MODEL	A	B	C	D	E	F
MPKA50B1/8	.790 (20.0)	.580 (14.7)	.540 (13.7)	.080 (2.0)	.450 (11.4)	.590 (15.0)
MPKA50B1/4	.790 (20.0)	.580 (14.7)	.540 (13.7)	.080 (2.0)	.450 (11.4)	.590 (15.0)
MPKA70B1/4	.980 (24.9)	.580 (14.7)	.472 (12.0)	.160 (4.0)	.580 (14.7)	.677 (17.2)
MPKA90B1/4	1.360 (34.5)	.960 (24.3)	.680 (17.2)	.200 (5.0)	.740 (18.8)	.850 (21.5)

MPKES SERIES Fluted with white line indicator on side and skirt



MODEL	A	B	C	D	E	F
MPKES60B1/8	.750 (19.0)	.620 (15.7)	.460 (11.6)	.090 (2.3)	.370 (9.4)	.470 (11.9)
MPKES60B1/4	.750 (19.0)	.620 (15.7)	.460 (11.6)	.090 (2.3)	.370 (9.4)	.470 (11.9)
MPKES70B1/4	.850 (21.5)	.750 (19.0)	.710 (18.1)	.080 (2.0)	.420 (10.6)	.540 (13.7)
MPKES90B1/4	1.000 (25.4)	.890 (22.6)	.870 (22.1)	.080 (2.0)	.470 (11.9)	.570 (14.4)
MPKES120B1/4	1.300 (33.0)	1.160 (29.4)	1.000 (25.4)	.120 (3.0)	.500 (12.7)	.630 (16.0)
MPKES140B1/4	1.48 (37.6)	1.35 (34.3)	.120 (3.0)	.120 (3.0)	.550 (13.9)	.690 (17.5)

MPKG SERIES Ribbed with white line indicator on side



MODEL	A	B	C	D	E	F
MPKG40B1/8	.440 (11.1)	.410 (10.4)	.320 (8.1)	.080 (2.0)	.380 (9.7)	.470 (11.9)
MPKG50B1/8	.550 (14.0)	.500 (12.7)	.440 (11.1)	.056 (1.4)	.395 (10.0)	.520 (13.2)
MPKG50B1/4	.550 (14.0)	.500 (12.7)	.440 (11.1)	.056 (1.4)	.395 (10.0)	.520 (13.2)
MPKG60B1/4	.660 (16.7)	.610 (15.5)	.550 (14.0)	.080 (2.0)	.430 (10.9)	.550 (14.0)
MPKG70B1/4	.740 (18.8)	.700 (17.8)	.590 (15.0)	.080 (2.0)	.450 (11.4)	.550 (14.0)
MPKG90B1/4	.860 (21.8)	.810 (20.6)	.720 (18.3)	.080 (2.0)	.410 (10.4)	.550 (14.0)
MPKG100B1/4	1.050 (26.6)	1.000 (25.4)	.920 (23.3)	.080 (2.0)	.430 (10.9)	.550 (14.7)
MPKG125B1/4	1.250 (31.8)	1.200 (30.4)	.690 (17.5)	.080 (2.0)	.430 (10.9)	.580 (14.7)

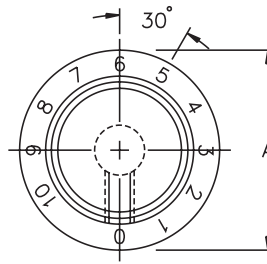
MPKG 90 THRU 125
TWO SET SCREWS

MPKG 40 THRU 70
ONE SET SCREW

SPECIFICATIONS SUBJECT TO CHANGE WITHOUT NOTICE.

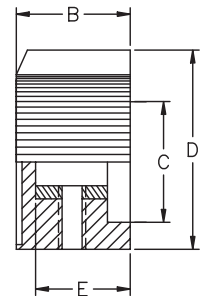
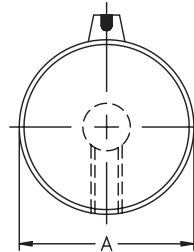
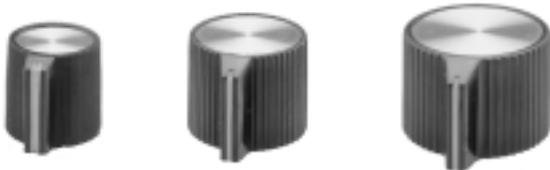
Notes: Dimensions in inches & (millimeters). Shaft size is last 3 digits of Model No.

PKD SERIES Straight knurl with skirt with 0 to 10 numerals



MODEL	A	B	C	D	E	F
PKD60B101/8	.780 (19.8)	.600 (15.2)	.490 (12.4)	.060 (1.53)	.390 (9.91)	.510 (12.9)
PKD60B101/4	.780 (19.8)	.600 (15.2)	.490 (12.4)	.060 (1.53)	.390 (9.91)	.510 (12.9)
PKD70B101/4	1.00 (25.4)	.740 (18.8)	.730 (18.5)	.090 (2.29)	.500 (12.7)	.590 (15.0)
PKD100B101/4	1.29 (32.7)	1.00 (25.4)	.730 (18.5)	.040 (1.01)	.500 (12.7)	.590 (15.0)

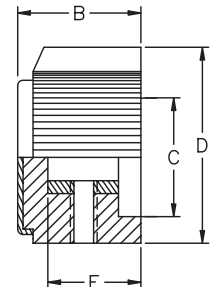
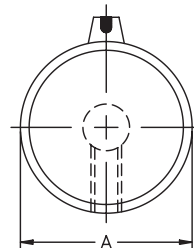
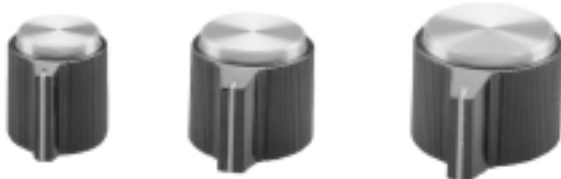
PKJ SERIES Straight knurl with pointer and indicator line on side



MODEL	A	B	C	D	E
PKJ50B1/8	.510 (12.9)	.510 (12.9)	.350 (8.89)	.590 (15.0)	.430 (10.9)
*PKJ50B1/4	.510 (12.9)	.510 (12.9)	.350 (8.89)	.590 (15.0)	.430 (10.9)
PKJ60B1/4	.640 (16.2)	.550 (14.0)	.470 (11.9)	.760 (19.3)	.450 (11.4)
PKJ70B1/4	.760 (19.3)	.550 (14.0)	.550 (14.0)	.910 (23.1)	.450 (11.4)

*- Knob has #4-40 set screw.

PKJT SERIES Straight knurl with pointer and indicator line on side



MODEL	A	B	C	D	E
PKJT50B1/8	.510 (12.9)	.590 (15.0)	.350 (8.89)	.590 (15.0)	.430 (10.9)
*PKJT50B1/4	.510 (12.9)	.590 (15.0)	.350 (8.89)	.590 (15.0)	.430 (10.9)
PKJT60B1/4	.640 (16.2)	.620 (15.7)	.470 (11.9)	.760 (19.3)	.450 (11.4)
PKJT70B1/4	.760 (19.3)	.620 (15.7)	.550 (14.0)	.910 (23.1)	.450 (11.4)

*- Knob has #4-40 set screw.

SPECIFICATIONS SUBJECT TO CHANGE WITHOUT NOTICE.



Компания «Life Electronics» занимается поставками электронных компонентов импортного и отечественного производства от производителей и со складов крупных дистрибьюторов Европы, Америки и Азии.

С конца 2013 года компания активно расширяет линейку поставок компонентов по направлению коаксиальный кабель, кварцевые генераторы и конденсаторы (керамические, пленочные, электролитические), за счёт заключения дистрибьюторских договоров

Мы предлагаем:

- Конкурентоспособные цены и скидки постоянным клиентам.
- Специальные условия для постоянных клиентов.
- Подбор аналогов.
- Поставку компонентов в любых объемах, удовлетворяющих вашим потребностям.
- Приемлемые сроки поставки, возможна ускоренная поставка.
- Доставку товара в любую точку России и стран СНГ.
- Комплексную поставку.
- Работу по проектам и поставку образцов.
- Формирование склада под заказчика.
- Сертификаты соответствия на поставляемую продукцию (по желанию клиента).
- Тестирование поставляемой продукции.
- Поставку компонентов, требующих военную и космическую приемку.
- Входной контроль качества.
- Наличие сертификата ISO.

В составе нашей компании организован Конструкторский отдел, призванный помогать разработчикам, и инженерам.

Конструкторский отдел помогает осуществить:

- Регистрацию проекта у производителя компонентов.
- Техническую поддержку проекта.
- Защиту от снятия компонента с производства.
- Оценку стоимости проекта по компонентам.
- Изготовление тестовой платы монтаж и пусконаладочные работы.



Тел: +7 (812) 336 43 04 (многоканальный)
Email: org@lifeelectronics.ru