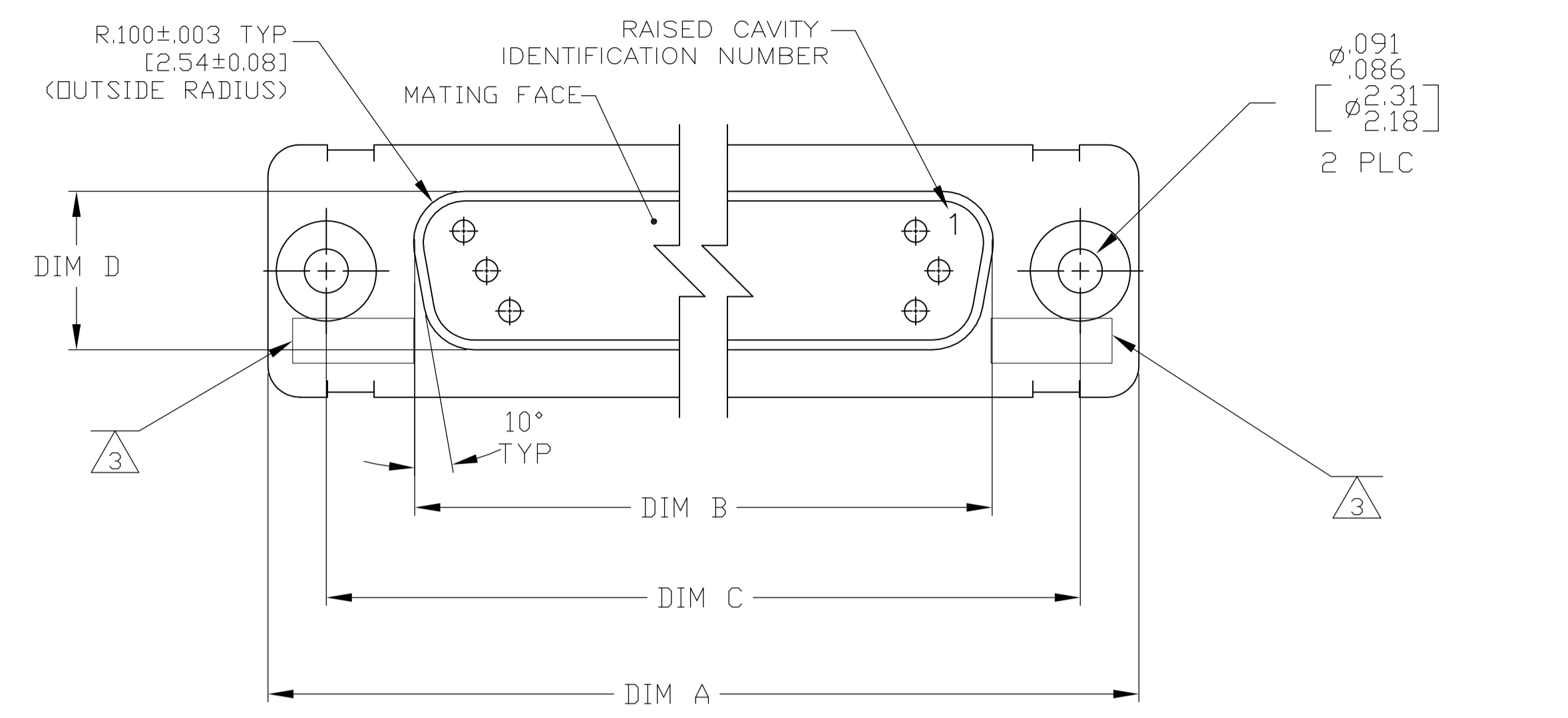
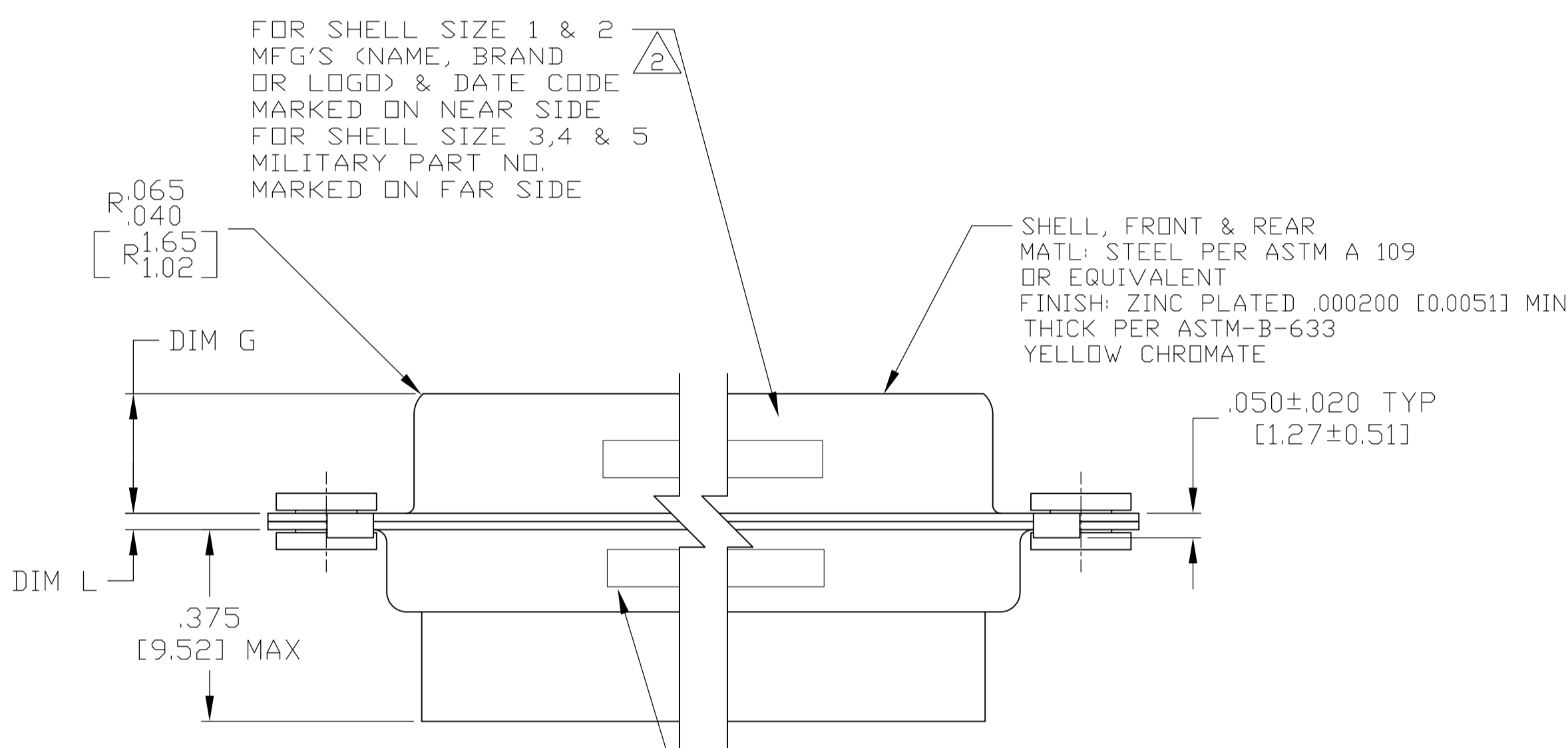


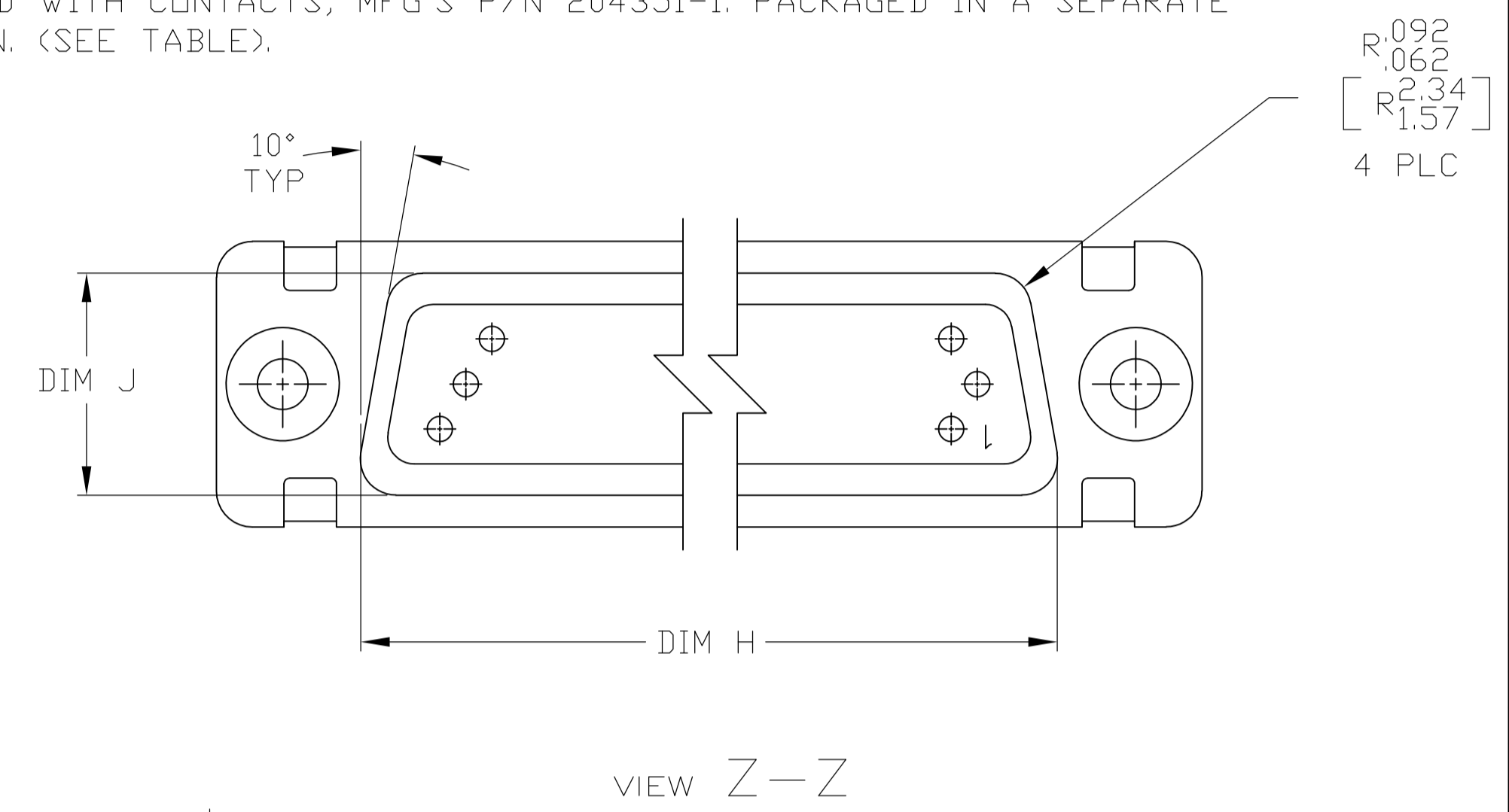
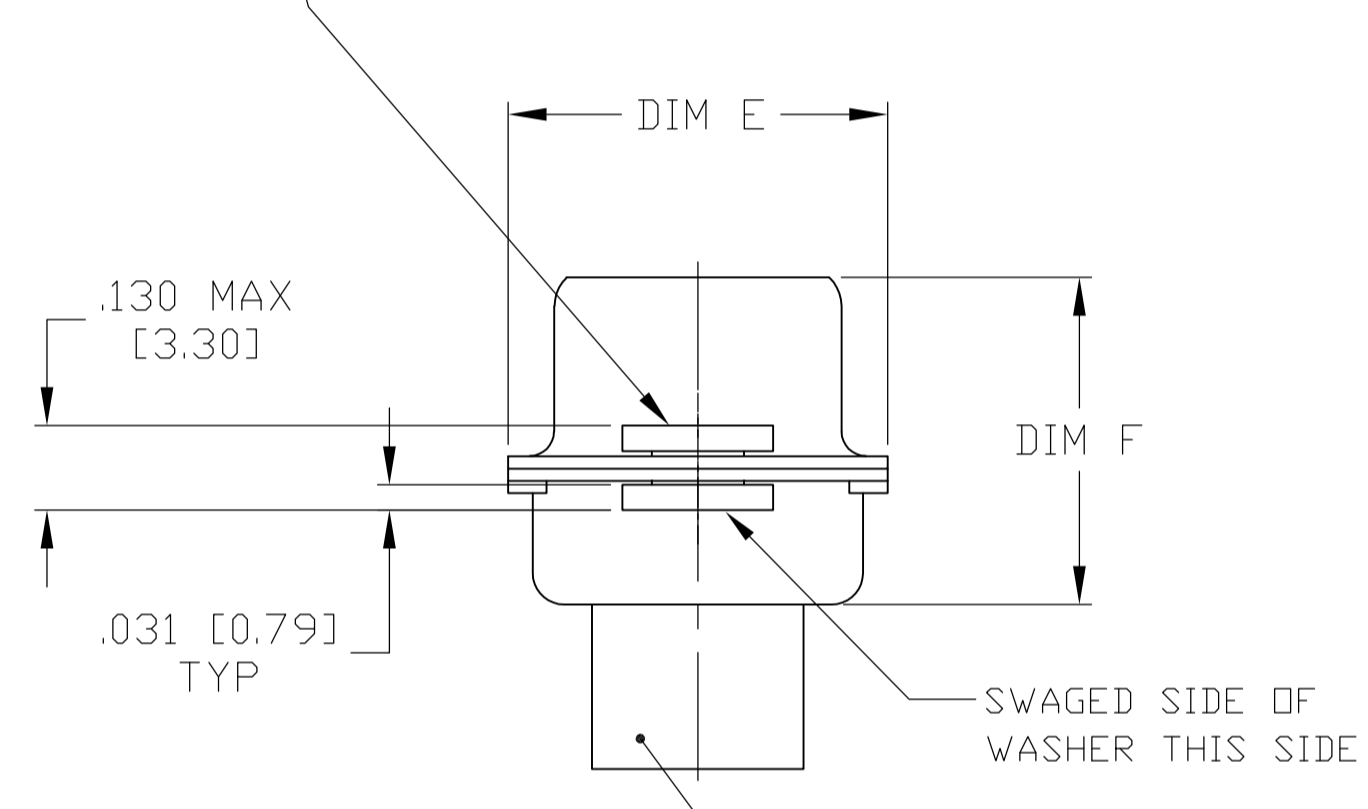
| REVISONS | | DATE | DN | APVD |
|----------|---------------------------|-------------|---------|-------|
| LOC | DIST | DESCRIPTION | | |
| F | REVISED PER ECO-15-016062 | | 09NOV15 | KG CD |



1. THE CONNECTOR DESCRIBED IN THIS DOCUMENT WILL MATE WITH ANY PLUG CONNECTOR WITH THE SAME INSERT ARRANGEMENT.
2. MARKED WITH .047-.062 [1.19-1.57] HIGH CHARACTERS. FAR SIDE REFERS TO THE WIDE SIDE OF THE KEYSTONE. NEAR SIDE REFERS TO THE NARROW SIDE OF THE KEYSTONE. WHEN SPACE IS LIMITED MARKING CAN BE SPLIT BETWEEN FRONT AND REAR SHELL.
3. UL/CSA DESIGNATION STAMPED IN THIS AREA (EXCEPT FOR SIZE 6).
4. CONNECTOR ASSEMBLY WITHOUT CONTACTS, MFG'S P/N 204351-1. MUST BE ORDERED SEPARATELY.
5. CONNECTOR ASSEMBLY SUPPLIED WITH CONTACTS, MFG'S P/N 204351-1. PACKAGED IN A SEPARATE CONTAINER. QTY = NO. OF POSN. (SEE TABLE).



FLOATING BUSHING/WASHER, 2 REQ'D.
 MATL: STAINLESS STEEL PER ASTM-A-582
 FINISH: PASSIVATED PER QQ-P-35B
 FLOATS .008±.004 [0.20±0.10] VERTICALLY AND .031 [0.79] HORIZONTALLY



SIZE 22 SOCKET CONTACT
 BODY MATERIAL: COPPER ALLOY PER MIL-C-39029 & MIL-DTL-24308.
 PLATING: GOLD PER ASTM-B-488 (TYPE III) OVER NICKEL PER QQ-N-290.
 HOOD MATL: STAINLESS STEEL
 FINISH: PASSIVATED

FOR SHELL SIZE 1 & 2 MFG'S PART NO. (SEE TABLE) MARKED ON NEAR SIDE MILITARY PART NO. (SEE TABLE) MARKED ON FAR SIDE FOR SHELL SIZE 3,4 & 5 MFG'S (NAME, BRAND OR LOGO), MFG'S PART NO. AND DATE CODE MARKED ON FAR SIDE

| REMARKS | MILITARY P/N ON PACKAGE | MILITARY P/N ON CONNECTOR | MARKED MFG'S PART NUMBER | L | J | H | G | F | E | D | C | B | A | INSERT ARRANGEMENT | NO OF POS | SHELL SIZE | PART NUMBER |
|---------|-------------------------|---------------------------|--------------------------|----------------------------|------------------------------|--------------------------------|----------------------------|------------------------------|------------------------------|------------------------------|--------------------------------|--------------------------------|--------------------------------|--------------------|-----------|------------|-------------|
| 5 | M24308/2-33Z | M24308/2-33Z | 1-1757826-2 | .049 [1.24] .029 [0.74] | .606 [15.39] .586 [14.88] | 2.312 [58.72] 2.292 [58.22] | .248 [6.30] .238 [5.82] | .439 [11.15] .419 [10.64] | .683 [17.35] .653 [16.59] | .490 [12.45] .480 [12.19] | 2.505 [63.63] 2.495 [63.37] | 2.194 [55.73] 2.184 [55.47] | 2.744 [69.70] 2.714 [68.94] | MS14004-1 | 104 | 6 | 1-1757826-2 |
| 5 | M24308/2-32Z | M24308/2-32Z | 1-1757826-1 | .049 [1.24] .029 [0.74] | .544 [13.82] .524 [13.31] | 2.188 [55.58] 2.168 [55.07] | .248 [6.30] .238 [5.82] | .439 [11.15] .419 [10.64] | .620 [15.75] .590 [14.99] | .428 [10.87] .418 [10.62] | 2.411 [61.24] 2.401 [60.99] | 2.069 [52.55] 2.059 [52.30] | 2.650 [67.31] 2.620 [66.55] | MS18277-2 | 78 | 5 | 1-1757826-1 |
| 5 | M24308/2-31Z | M24308/2-31Z | 1-1757826-0 | .049 [1.24] .029 [0.74] | .432 [10.97] .412 [10.46] | 2.282 [57.96] 2.262 [57.45] | .248 [6.30] .238 [5.82] | .439 [11.15] .419 [10.64] | .509 [12.93] .479 [12.17] | .316 [8.03] .306 [7.77] | 2.505 [63.63] 2.495 [63.37] | 2.164 [54.97] 2.154 [54.71] | 2.744 [69.70] 2.714 [68.94] | MS18276-2 | 62 | 4 | 1-1757826-0 |
| 5 | M24308/2-30Z | M24308/2-30Z | 1757826-9 | .049 [1.24] .029 [0.74] | .432 [10.97] .412 [10.46] | 1.635 [41.53] 1.615 [41.02] | .248 [6.30] .238 [5.82] | .439 [11.15] .419 [10.64] | .509 [12.93] .479 [12.17] | .316 [8.03] .306 [7.77] | 1.857 [47.17] 1.847 [46.91] | 1.516 [38.51] 1.506 [38.25] | 2.103 [53.42] 2.073 [52.65] | MS18275-2 | 44 | 3 | 1757826-9 |
| 5 | M24308/2-29Z | M24308/2-29Z | 1757826-8 | .040 [1.02] .020 [0.51] | .432 [10.97] .412 [10.46] | 1.093 [27.76] 1.073 [27.25] | .248 [6.30] .238 [5.82] | .439 [11.15] .419 [10.64] | .509 [12.93] .479 [12.17] | .316 [8.03] .306 [7.77] | 1.317 [33.45] 1.307 [33.20] | .976 [24.79] .966 [24.54] | 1.556 [39.52] 1.526 [38.76] | MS18274-2 | 26 | 2 | 1757826-8 |
| 5 | M24308/2-28Z | M24308/2-28Z | 1757826-7 | .040 [1.02] .020 [0.51] | .432 [10.97] .412 [10.46] | .769 [19.53] .749 [19.02] | .248 [6.30] .238 [5.82] | .439 [11.15] .419 [10.64] | .509 [12.93] .479 [12.17] | .316 [8.03] .306 [7.77] | .989 [25.12] .979 [24.87] | .648 [16.46] .638 [16.21] | 1.228 [31.19] 1.198 [30.43] | MS18273-2 | 15 | 1 | 1757826-7 |
| 4 | M24308/2-302Z | M24308/2-33Z | 1-1757826-2 | .049 [1.24] .029 [0.74] | .606 [15.39] .586 [14.88] | 2.312 [58.72] 2.292 [58.22] | .248 [6.30] .238 [5.82] | .439 [11.15] .419 [10.64] | .683 [17.35] .653 [16.59] | .490 [12.45] .480 [12.19] | 2.505 [63.63] 2.495 [63.37] | 2.194 [55.73] 2.184 [55.47] | 2.744 [69.70] 2.714 [68.94] | MS14004-1 | 104 | 6 | 1757826-6 |
| 4 | M24308/2-301Z | M24308/2-32Z | 1-1757826-1 | .049 [1.24] .029 [0.74] | .544 [13.82] .524 [13.31] | 2.188 [55.58] 2.168 [55.07] | .248 [6.30] .238 [5.82] | .439 [11.15] .419 [10.64] | .620 [15.75] .590 [14.99] | .428 [10.87] .418 [10.62] | 2.411 [61.24] 2.401 [60.99] | 2.069 [52.55] 2.059 [52.30] | 2.650 [67.31] 2.620 [66.55] | MS18277-2 | 78 | 5 | 1757826-5 |
| 4 | M24308/2-300Z | M24308/2-31Z | 1-1757826-0 | .049 [1.24] .029 [0.74] | .432 [10.97] .412 [10.46] | 2.282 [57.96] 2.262 [57.45] | .248 [6.30] .238 [5.82] | .439 [11.15] .419 [10.64] | .509 [12.93] .479 [12.17] | .316 [8.03] .306 [7.77] | 2.505 [63.63] 2.495 [63.37] | 2.164 [54.97] 2.154 [54.71] | 2.744 [69.70] 2.714 [68.94] | MS18276-2 | 62 | 4 | 1757826-4 |
| 4 | M24308/2-299Z | M24308/2-30Z | 1757826-9 | .049 [1.24] .029 [0.74] | .432 [10.97] .412 [10.46] | 1.635 [41.53] 1.615 [41.02] | .248 [6.30] .238 [5.82] | .439 [11.15] .419 [10.64] | .509 [12.93] .479 [12.17] | .316 [8.03] .306 [7.77] | 1.857 [47.17] 1.847 [46.91] | 1.516 [38.51] 1.506 [38.25] | 2.103 [53.42] 2.073 [52.65] | MS18275-2 | 44 | 3 | 1757826-3 |
| 4 | M24308/2-298Z | M24308/2-29Z | 1757826-8 | .040 [1.02] .020 [0.51] | .432 [10.97] .412 [10.46] | 1.093 [27.76] 1.073 [27.25] | .248 [6.30] .238 [5.82] | .439 [11.15] .419 [10.64] | .509 [12.93] .479 [12.17] | .316 [8.03] .306 [7.77] | 1.317 [33.45] 1.307 [33.20] | .976 [24.79] .966 [24.54] | 1.556 [39.52] 1.526 [38.76] | MS18274-2 | 26 | 2 | 1757826-2 |
| 4 | M24308/2-297Z | M24308/2-28Z | 1757826-7 | .040 [1.02] .020 [0.51] | .432 [10.97] .412 [10.46] | .769 [19.53] .749 [19.02] | .248 [6.30] .238 [5.82] | .439 [11.15] .419 [10.64] | .509 [12.93] .479 [12.17] | .316 [8.03] .306 [7.77] | .989 [25.12] .979 [24.87] | .648 [16.46] .638 [16.21] | 1.228 [31.19] 1.198 [30.43] | MS18273-2 | 15 | 1 | 1757826-1 |

THIS DRAWING IS A CONTROLLED DOCUMENT. DIMENSIONS: INCHES (mm). TOLERANCES UNLESS OTHERWISE SPECIFIED: 0 PLC ± .005 [0.13], 1 PLC ± .005 [0.13], 2 PLC ± .005 [0.13], 3 PLC ± .005 [0.13], 4 PLC ± .005 [0.13]. ANGLES: ± 1'.

MATERIAL: SEE CALLOUTS. FINISH: SEE CALLOUTS.

APPROVED: D.MILLER. DATE: 6-8-05. DRAWING NO: 00779. CUSTOMER DRAWING.

STE TE Connectivity. AMPLIMITE RECEPTACLE ASSY, SIZE 1 THRU 6 SERIES 90 WITH ZINC PLATING AND FLOAT BUSHINGS.

SCALE: 4:1. SHEET 1 OF 1. REV F.

Компания «Life Electronics» занимается поставками электронных компонентов импортного и отечественного производства от производителей и со складов крупных дистрибьюторов Европы, Америки и Азии.

С конца 2013 года компания активно расширяет линейку поставок компонентов по направлению коаксиальный кабель, кварцевые генераторы и конденсаторы (керамические, пленочные, электролитические), за счёт заключения дистрибьюторских договоров

Мы предлагаем:

- Конкурентоспособные цены и скидки постоянным клиентам.
- Специальные условия для постоянных клиентов.
- Подбор аналогов.
- Поставку компонентов в любых объемах, удовлетворяющих вашим потребностям.
- Приемлемые сроки поставки, возможна ускоренная поставка.
- Доставку товара в любую точку России и стран СНГ.
- Комплексную поставку.
- Работу по проектам и поставку образцов.
- Формирование склада под заказчика.
- Сертификаты соответствия на поставляемую продукцию (по желанию клиента).
- Тестирование поставляемой продукции.
- Поставку компонентов, требующих военную и космическую приемку.
- Входной контроль качества.
- Наличие сертификата ISO.

В составе нашей компании организован Конструкторский отдел, призванный помогать разработчикам, и инженерам.

Конструкторский отдел помогает осуществить:

- Регистрацию проекта у производителя компонентов.
- Техническую поддержку проекта.
- Защиту от снятия компонента с производства.
- Оценку стоимости проекта по компонентам.
- Изготовление тестовой платы монтаж и пусконаладочные работы.



Тел: +7 (812) 336 43 04 (многоканальный)

Email: org@lifeelectronics.ru