

**PLEASE CHECK WWW.MOLEX.COM FOR LATEST PART INFORMATION**

**Part Number:** [0877153915](#)

**Status:** **Active**

**Overview:**

**Description:** 1.00mm (.039") Pitch, PCI Express\* Connector, 280 Circuits, Nylon 4/6 Glass-filled, Black Housing, Phosphor Bronze, 0.38µm (15µ") Gold (Au) Plating, with Plastic Pegs, 3.00mm (.118") Solder tail, Lead Free

**Agency Certification**

CSA LR19980

**General**

Product Family Edge Card Connectors  
Series 87715  
Component Type Edgecard to PCB  
Overview pci\_express\_card\_edge\_connector  
Product Name PCI Express\*

**Physical**

Circuits (Loaded) 280  
Circuits (maximum) 280  
Circuits Detail All Signal  
Durability (mating cycles max) 50  
Entry Angle Vertical (Top Entry)  
Flammability 94V-0  
Keying to Mating Part Yes  
Material - Plating Mating Gold  
Material - Plating Termination Tin  
PC Tail Length (in) 0.118 In  
PC Tail Length (mm) 3.00 mm  
PCB Locator Yes  
PCB Retention Yes  
PCB Thickness Recommended (in) 0.093 In  
PCB Thickness Recommended (mm) 2.40 mm  
Packaging Type Tray  
Pitch - Mating Interface (in) 0.039 In  
Pitch - Mating Interface (mm) 1.00 mm  
Pitch - Term. Interface (in) 0.039 In  
Pitch - Term. Interface (mm) 1.00 mm  
Plating min: Mating (µin) 15  
Plating min: Mating (µm) 0.38  
Polarized to Mating Part Yes  
Temperature Range - Operating -55°C to +85°C  
Termination Interface: Style Through Hole

**Electrical**

Current - Maximum per Contact 1.1A  
Voltage - Maximum 50V AC (RMS)/DC

**Material Info**

**Reference - Drawing Numbers**

Packaging Specification PK-87715-206  
Product Specification PS-87715-206  
Sales Drawing SD-87715-206  
Test Summary TS-87715-206

\* PCI Express is a registered trademark of PCI-SIG®

**EU RoHS**

**ELV and RoHS  
Compliant**

**REACH SVHC**

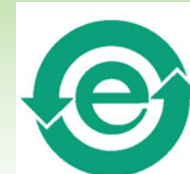
Not Reviewed

**Halogen-Free**

**Status**

**Not Reviewed**

**China RoHS**



**Need more information on product  
environmental compliance?**

Email [productcompliance@molex.com](mailto:productcompliance@molex.com)  
For a multiple part number RoHS Certificate of  
Compliance, [click here](#)

Please visit the [Contact Us](#) section for any  
non-product compliance questions.

**Search Parts in this Series**

87715Series

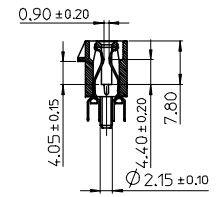
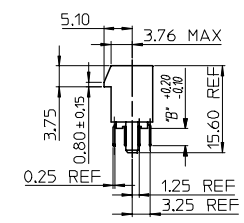
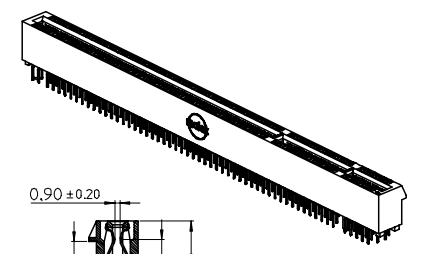
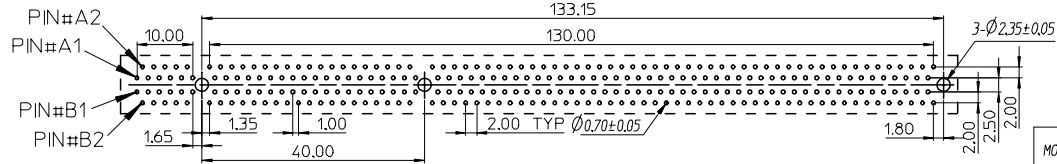
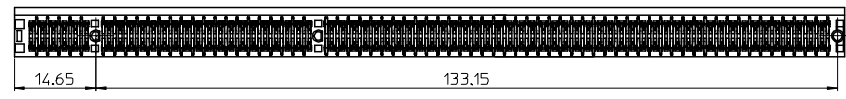
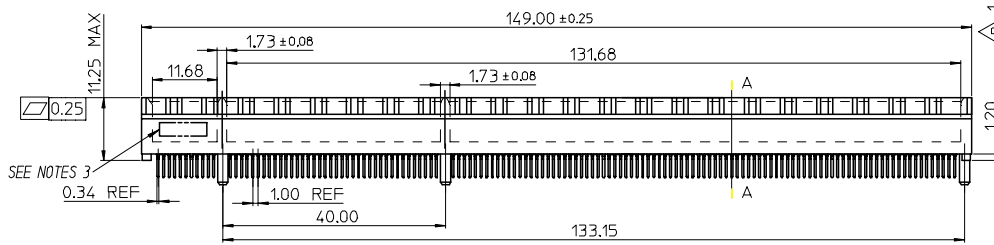
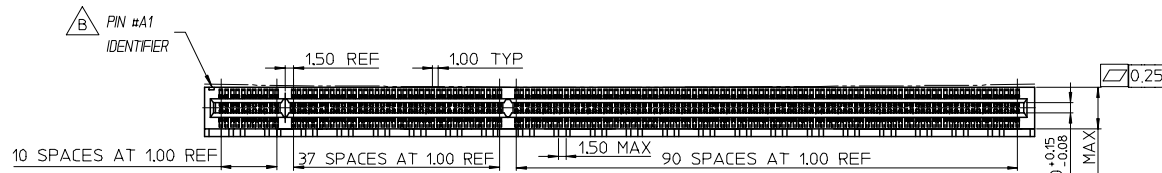
**Mates With**

PCI Express Card

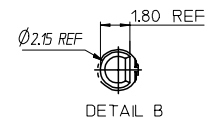
This document was generated on 06/04/2010

**PLEASE CHECK [WWW.MOLEX.COM](http://WWW.MOLEX.COM) FOR LATEST PART INFORMATION**

7 6 5 4 3 2 1



SECTION A-A



| MOLEX PIN  | CIRCUIT SIZE | HOUSING MATERIAL | HOUSING COLOR | TERMINAL MATERIAL | CONTACT PLATING | SOLDERTAIL PLATING                                  | DIMB* |
|------------|--------------|------------------|---------------|-------------------|-----------------|---|-------|
| 87715-3914 | 280          | NYLON 46         | BLACK         | PHOSPHOR BRONZE   | GOLD FLASH      | 100 MICRINCH TIN OVER<br>50 MICRINCH NICKEL OVERALL | 3.00  |
| 87715-3915 | 280          | NYLON 46         | BLACK         | PHOSPHOR BRONZE   | 15 MICRINCH     | 100 MICRINCH TIN OVER<br>50 MICRINCH NICKEL OVERALL | 3.00  |
| 87715-3916 | 280          | NYLON 46         | BLACK         | PHOSPHOR BRONZE   | 30 MICRINCH     | 100 MICRINCH TIN OVER<br>50 MICRINCH NICKEL OVERALL | 3.00  |
| 87715-3917 | 280          | NYLON 46         | BLACK         | PHOSPHOR BRONZE   | GOLD FLASH      | 100 MICRINCH TIN OVER<br>50 MICRINCH NICKEL OVERALL | 2.54  |
| 87715-3918 | 280          | NYLON 46         | BLACK         | PHOSPHOR BRONZE   | 15 MICRINCH     | 100 MICRINCH TIN OVER<br>50 MICRINCH NICKEL OVERALL | 2.54  |
| 87715-3919 | 280          | NYLON 46         | BLACK         | PHOSPHOR BRONZE   | 30 MICRINCH     | 100 MICRINCH TIN OVER<br>50 MICRINCH NICKEL OVERALL | 2.54  |

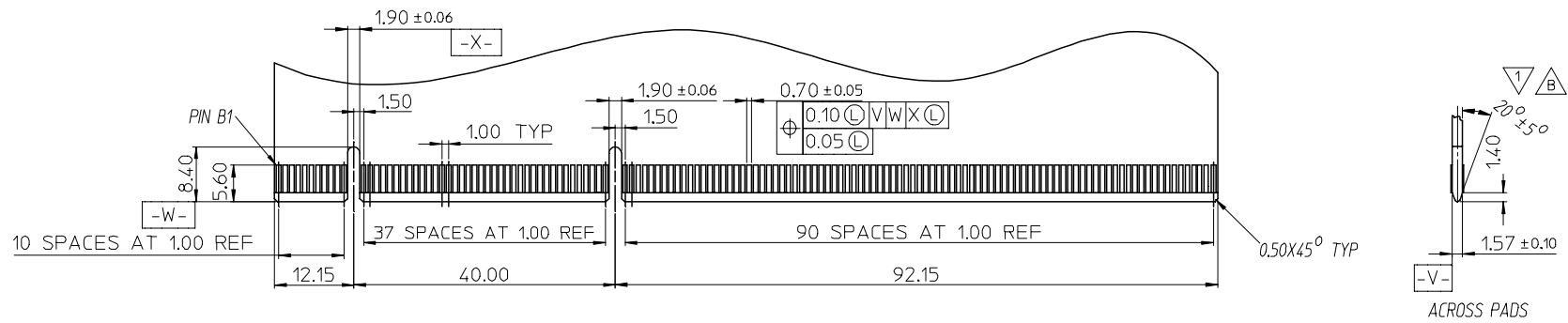
- NOTES:
- 1.MATERIALS:  
1-1.HOUSING:SEE TABLE GLASS FIBER FILLED UL94V-0  
COLOR:SEE TABLE  
1-2.CONTACT:SEE TABLE
  - 2.PLATING:  
2-1.CONTACT AREA:SEE TABLE  
2-2.SOLDER TAIL:SEE TABLE  
2-3.UNDER PLATING:SEE TABLE
  - 3.DATE CODE:TO BE PRINTED
  - 4.PRODUCT SPECIFICATION REFER TO PS-87715-200
  - 5.PACKAGE SPECIFICATION REFER TO PK-87715-206
  - 6.TEST SUMMARY:REFER TO TS-87715-206
  - 7.LEAD FREE AND ROHS COMPLIANT.

|  |                               |  |              |  |              |              |  |                        |  |
|--|-------------------------------|--|--------------|--|--------------|--------------|--|------------------------|--|
| EWR 2006-0005 & 2006-0019<br>2005-0094<br>EC NO: SH2006-0100<br>DRWN:ALL IN 2006/05/15<br>CHKD: 2006/05/15<br>APPR:WWSCHANG 2006/05/16 | QUALITY SYMBOLS<br>▽=0<br>◻=0 | GENERAL TOLERANCES (UNLESS SPECIFIED)                      |              | DIMENSION STYLE<br>MM ONLY   |              | SCALE        | DESIGN UNITS<br>METRIC   | THIRD ANGLE PROJECTION |  |
|  |                               |  | mm           | INCH   | DRAWN BY     | DATE         | TITLE  |                        |  |
|  |                               | 4 PLACES   | ± ---        | ± ---  | TOM          | 2005/03/22   | 1.0 EDGE CARD 280 CKT<br>VERTICAL DIP CONNECTOR<br>(LEAD FREE VERSION) |                        |  |
|  |                               | 3 PLACES   | ± ---        | ± ---  | CHECKED BY   | DATE         |  |                        |  |
| 2 PLACES   | ± 0.25                        | ± ---  | ALL IN       | 2005/03/22   |              |              |  |                        |  |
| 1 PLACE  | ± 0.25                        | ± ---  | APPROVED BY  | DATE   |              |              |  |                        |  |
|  |                               | ANGULAR ± 3 °  | WWSCHANG     | 2005/03/22   |              |              |  |                        |  |
|  |                               | DRAFT WHERE APPLICABLE<br>MUST REMAIN<br>WITHIN DIMENSIONS | MATERIAL NO. | SEE TABLE  | DOCUMENT NO. | SD-87715-206 | SHEET NO.  | 1 OF 2                 |  |
|  |                               |  | SIZE         | THIS DRAWING CONTAINS INFORMATION THAT IS PROPRIETARY TO MOLEX<br>INCORPORATED AND SHOULD NOT BE USED WITHOUT WRITTEN PERMISSION |              |              |  |                        |  |

6 5 4 3 2 1

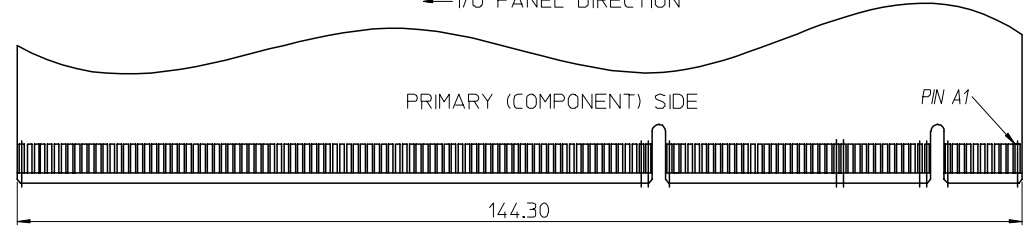
7 6 5 4 3 2 1

E



D

← I/O PANEL DIRECTION



△ I/O PANEL → DIRECTION  
DAUGHTER CARD  
SECONDARY (SOLDER) SIDE

C

B

△ CHAMFER EDGES MUST BE FREE OF CUTTING BURRS.

A

|  |  |                    |                 |                                       |                           |  |                           |   |                           |                           |                              |                           |  |
|--|--|--------------------|-----------------|---------------------------------------|---------------------------|--|---------------------------|---|---------------------------|---------------------------|------------------------------|---------------------------|--|
| SEE SHEET 1<br>EC NO: SH2006-0100<br>DRWN: ALL IN<br>CHKD:<br>APPR: WWSCHANG | 2006/05/15<br>2006/05/15<br>2006/05/16 | DESCRIPTION<br>REV | QUALITY SYMBOLS | GENERAL TOLERANCES (UNLESS SPECIFIED) |                           | DIMENSION STYLE<br>MM ONLY                           |                           | SCALE<br>1:1  | DESIGN UNITS<br>METRIC    | THIRD ANGLE PROJECTION    |                              |                           |  |
|  |  |                    | ▽ = 0<br>◻ = 0  | mm                                    | INCH                      | DRAWN BY<br>TOM                                      | DATE<br>2005/03/22        | TITLE<br>1.0 EDGE CARD 280 CKT VERTICAL DIP CONNECTOR (LEAD FREE VERSION) | MATERIAL NO.<br>SEE TABLE |                           | DOCUMENT NO.<br>SD-87715-206 | SHEET NO.<br>2 OF 2       |  |
|  |  |                    |                 | 4 PLACES ± ---                        | ± ---                     | CHECKED BY<br>ALL IN                                 | DATE<br>2005/03/22        | MATERIAL NO.<br>SEE TABLE   |                           | MATERIAL NO.<br>SEE TABLE |                              | MATERIAL NO.<br>SEE TABLE |  |
|  |  |                    |                 | 3 PLACES ± ---                        | ± ---                     | APPROVED BY<br>WWSCHANG                              | DATE<br>2005/03/22        | MATERIAL NO.<br>SEE TABLE   |                           | MATERIAL NO.<br>SEE TABLE |                              | MATERIAL NO.<br>SEE TABLE |  |
|  |  |                    |                 | 2 PLACES ± 0.25                       | ± ---                     | DRAFT WHERE APPLICABLE MUST REMAIN WITHIN DIMENSIONS |                           | MATERIAL NO.<br>SEE TABLE   |                           | MATERIAL NO.<br>SEE TABLE |                              | MATERIAL NO.<br>SEE TABLE |  |
|  | 1 PLACE ± 0.25                         | ± ---              | ANGULAR ± 3 °   |                                       | MATERIAL NO.<br>SEE TABLE |  | MATERIAL NO.<br>SEE TABLE |   | MATERIAL NO.<br>SEE TABLE |                           |                              |                           |  |

ib\_frame\_A4\_P\_AM\_T  
Rev. D 2004/06/28

6 5 4 3 2 1

Компания «Life Electronics» занимается поставками электронных компонентов импортного и отечественного производства от производителей и со складов крупных дистрибьюторов Европы, Америки и Азии.

С конца 2013 года компания активно расширяет линейку поставок компонентов по направлению коаксиальный кабель, кварцевые генераторы и конденсаторы (керамические, пленочные, электролитические), за счёт заключения дистрибьюторских договоров

Мы предлагаем:

- Конкурентоспособные цены и скидки постоянным клиентам.
- Специальные условия для постоянных клиентов.
- Подбор аналогов.
- Поставку компонентов в любых объемах, удовлетворяющих вашим потребностям.
- Приемлемые сроки поставки, возможна ускоренная поставка.
- Доставку товара в любую точку России и стран СНГ.
- Комплексную поставку.
- Работу по проектам и поставку образцов.
- Формирование склада под заказчика.
- Сертификаты соответствия на поставляемую продукцию (по желанию клиента).
- Тестирование поставляемой продукции.
- Поставку компонентов, требующих военную и космическую приемку.
- Входной контроль качества.
- Наличие сертификата ISO.

В составе нашей компании организован Конструкторский отдел, призванный помогать разработчикам, и инженерам.

Конструкторский отдел помогает осуществить:

- Регистрацию проекта у производителя компонентов.
- Техническую поддержку проекта.
- Защиту от снятия компонента с производства.
- Оценку стоимости проекта по компонентам.
- Изготовление тестовой платы монтаж и пусконаладочные работы.



Тел: +7 (812) 336 43 04 (многоканальный)

Email: [org@lifeelectronics.ru](mailto:org@lifeelectronics.ru)