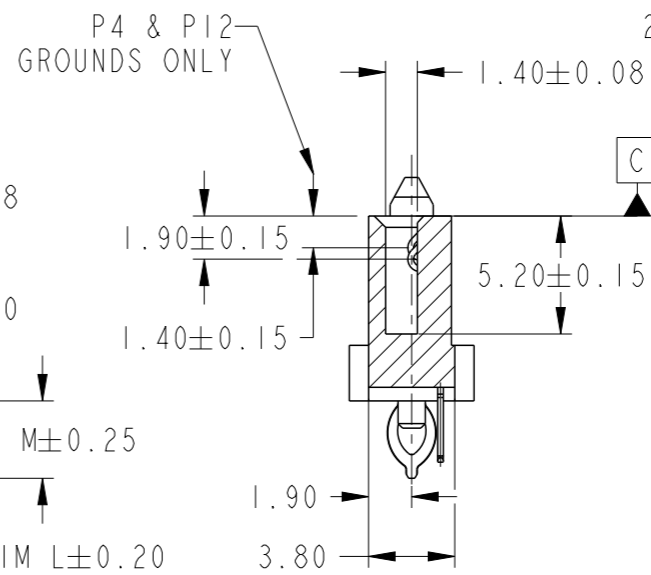
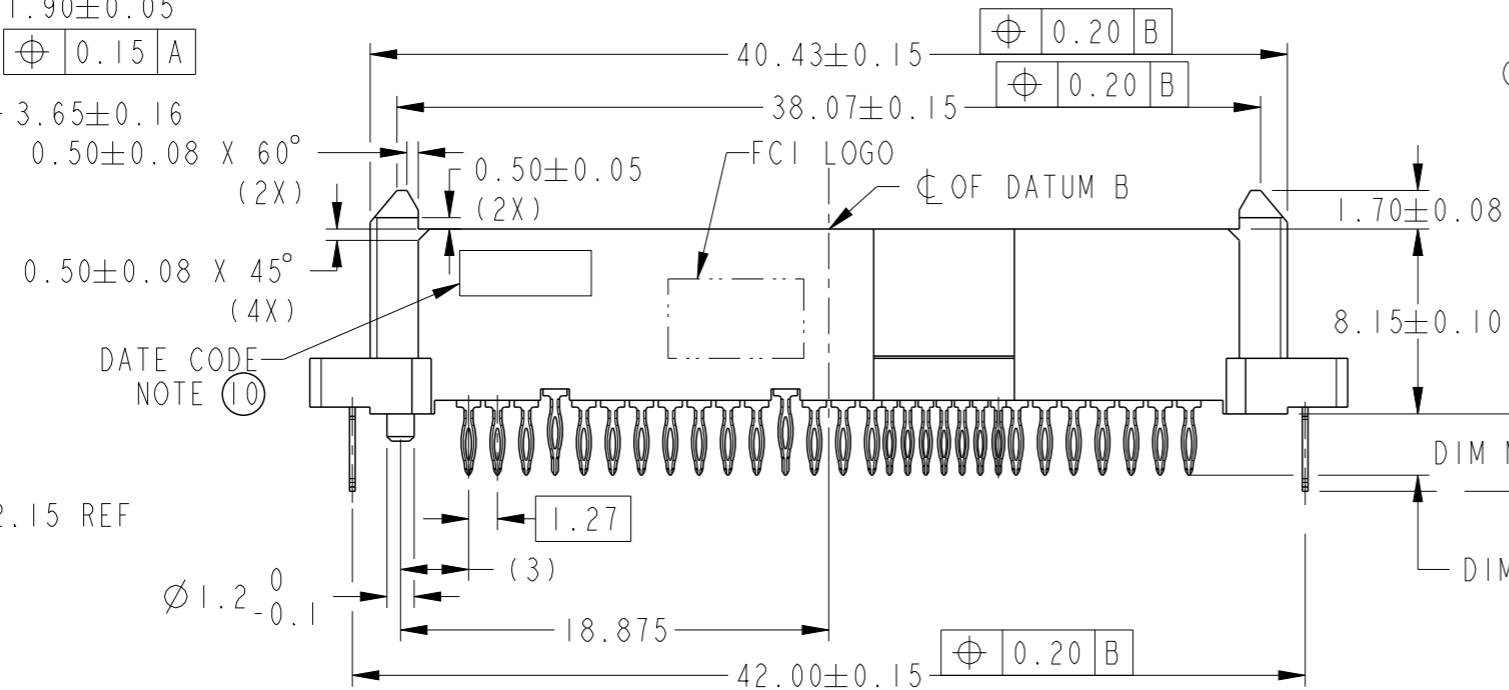
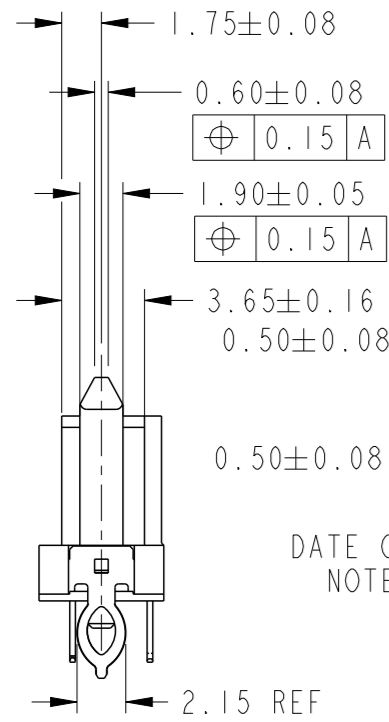
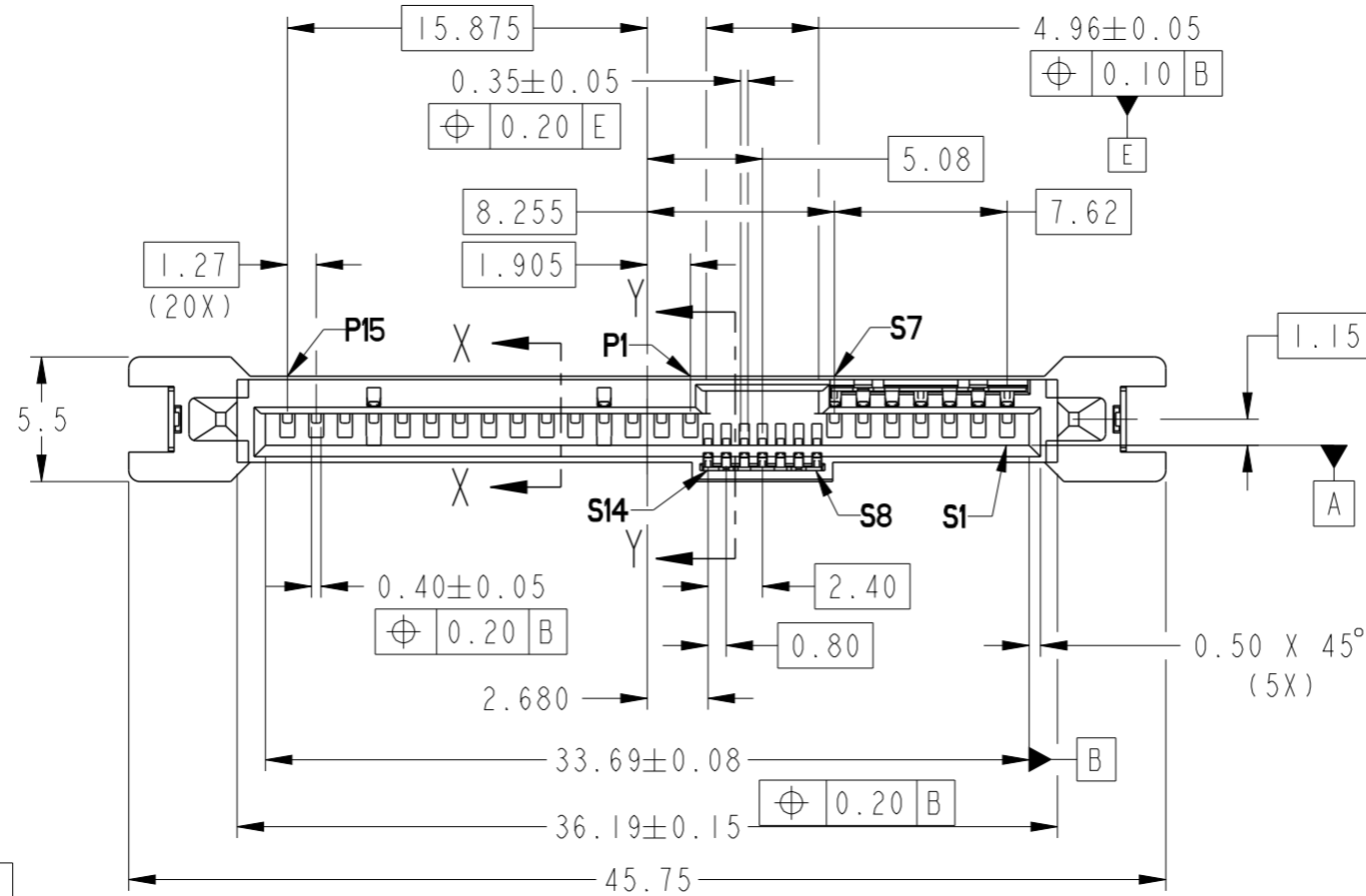
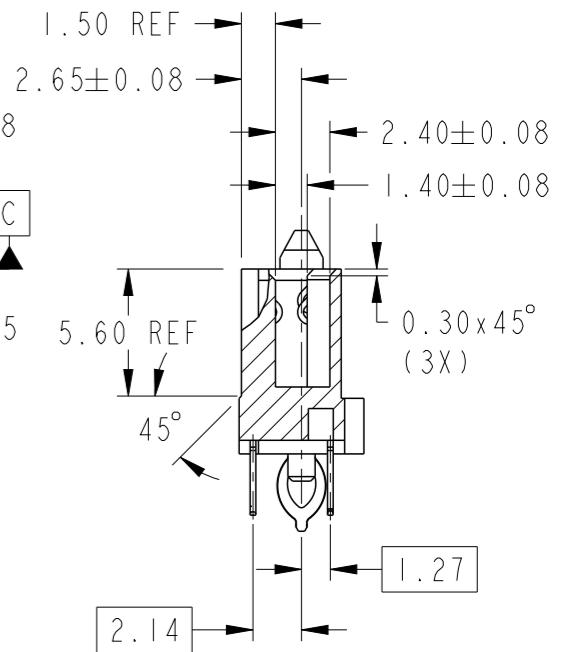


PRODUCT NO
SEE TABLE



SECTION X-X



SECTION Y-Y

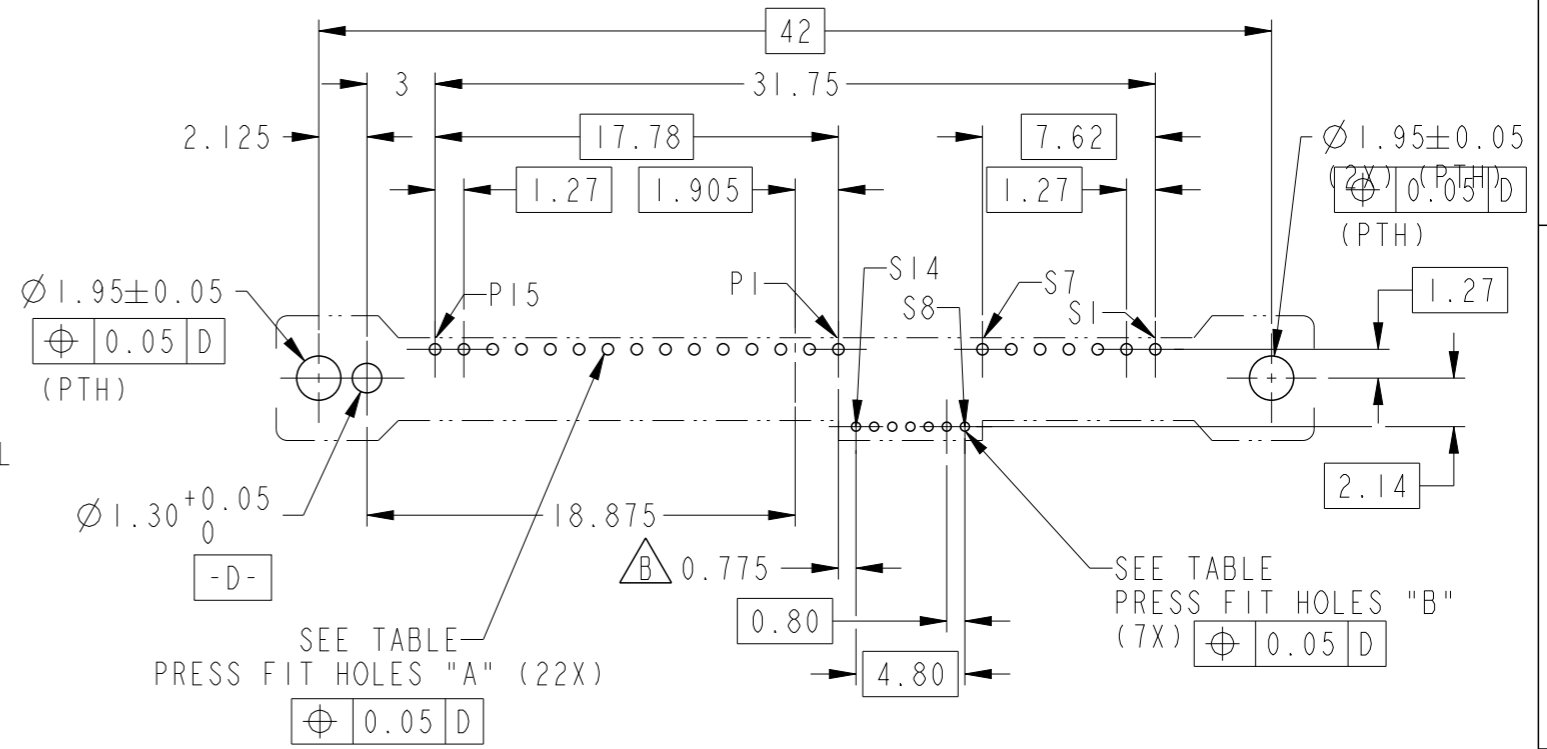
spec ref	-	dr	Guat-Lian Loo	2013/05/10	projection	MM	size	A3	scale	3:1	
tolerance std	ISO 406 ISO 1101	eng	Guat-Lian Loo	2016/03/03			ecn no	ELX-S-23205-1	rel level		Released
TOLERANCES UNLESS OTHERWISE SPECIFIED		chr	-	-			product family	SAS	rev		B
surface	linear	0.X	±		Amphenol FCI		dwg no	10125340	sheet 1 of 5		
		0.XX	±0.20		12G SAS RECEPTACLE VERTICAL PF TYPE ASSY		cat. no.	-	Product - Customer Drw		
	angular	0°	±2°		PDS: Rev :B		STATUS:Released		Printed: Mar 04, 2016		

PRODUCT NO	DIM L	DIM M	PLATING	RECOMMENDED P.C BOARD THICKNESS
10125340-00ILF	2.70	3.41	NOTE 2	1.57mm (0.062") / 2.36mm (0.093")
10125340-01ILF	3.70	3.41		2.36mm (0.093")

HOLE	A	B
HOLE DIAMETER AFTER PLATING	0.45 - 0.55 mm	0.35 - 0.45 mm
DRILLED HOLE	0.58 - 0.62 mm	0.47 - 0.51 mm
COPPER PLATING	25 - 50 μ m	25 - 50 μ m
Sn PLATING	5 - 15 μ m	5 - 15 μ m

NOTES:

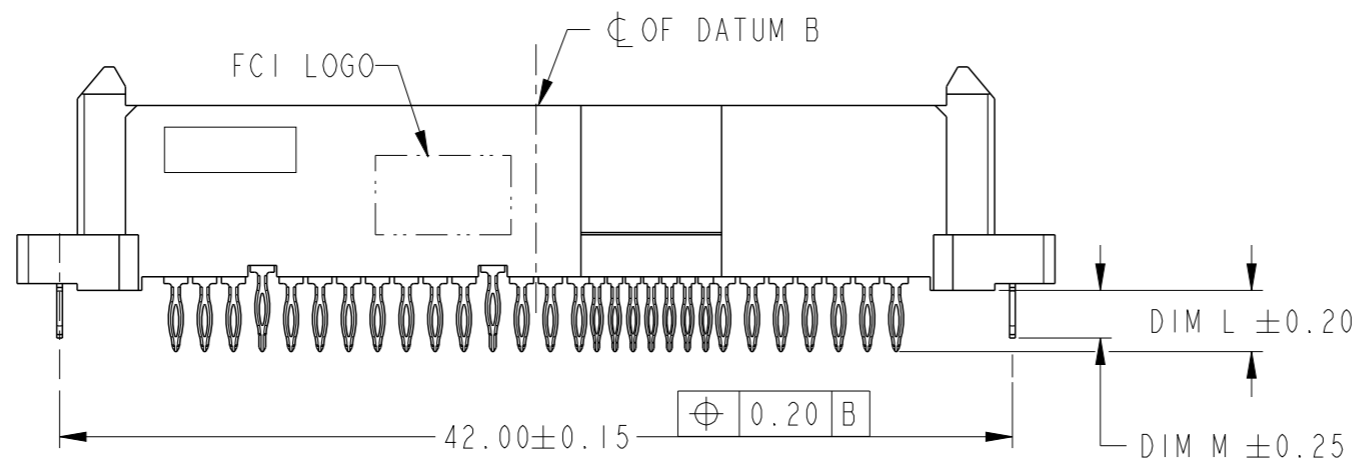
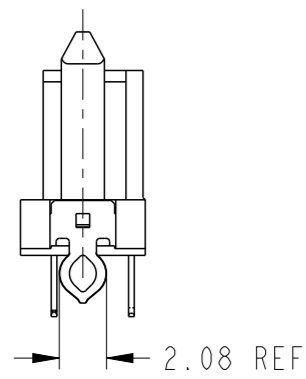
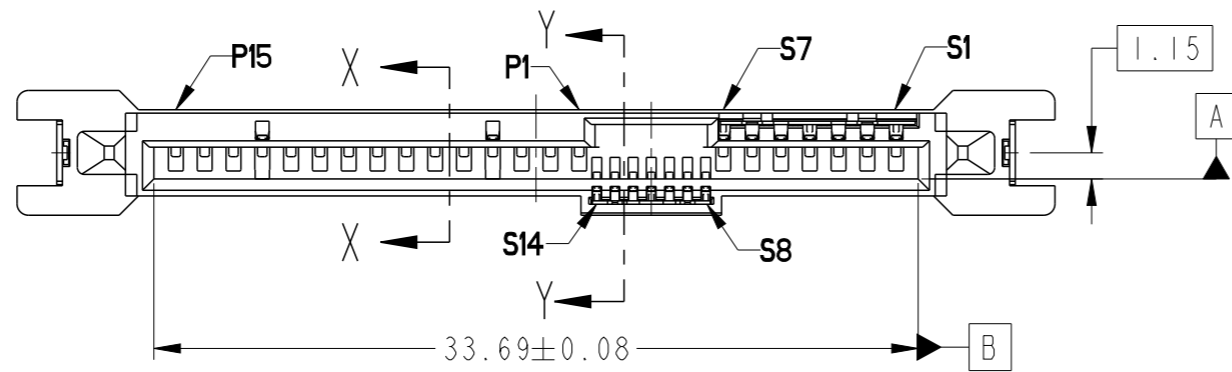
1. MATERIAL :
 - 1) HOUSING : HIGH TEMP. THERMOPLASTIC, UL 94V-0
 - COLOR : BLACK
 - 2) TERMINAL : COPPER ALLOY
 - 3) HOLD DOWN : COPPER ALLOY
2. FINISH :
 - 1) TERMINAL : 30 μ " Au PLATING (CONTACT POINT) OVER 50 μ " MIN NICKEL
 - 2) SOLDER TAIL : 20 μ " MIN - 60 μ " MAX TIN OVER 50 μ " MIN NICKEL
 - 3) HOLD DOWN : 50 μ " MIN TIN OVER 50 μ " MIN NICKEL
3. TRUE POSITION NOTES APPLY AT (L= 2.70mm) TERMINAL TIP
4. PER SFF REV 1.1 EXCEPT 0.8mm PITCH BUMP AREA.
5. THE STD PACKAGING IS IN TRAY
6. THE HOUSING WILL WITHSTAND EXPOSURE TO 260°C PEAK TEMPERATURE FOR 10 SECONDS IN A CONVECTION, INFRA-RED OR VAPOR PHASE REFLOW OVEN.
7. THIS PRODUCT MEETS EUROPEAN UNION DIRECTIVES AND OTHER COUNTRY REGULATIONS AS DESCRIBED IN GS-47-0004.
8. PART NUMBERS ENDING IN "LF" MEANS FOR NOTE 7 LEAD FREE IDENTIFICATION.
9. A \triangle B SYMBOL WILL BE NEXT TO ANY DIMENSION, VIEW, OR NOTE WHICH HAS BEEN MODIFIED WITH THE CURRENT DRAWING REVISION.
10. DATE CODE LOCATION. DATE CODE NO. YYWWD (E. G. 14225)
11. CORING AT NON FUNCTION AREAS ARE SUBJECT TO CHANGE WITHOUT NOTICES.
12. THE DIM. IS MEASURED AT P.C. BOARD SITTING PLANE.
- \triangle 13. DRAWING OF PRODUCT APPEARANCE IS FOR REFERENCE ONLY. ACTUAL APPEARANCE MAY NOT BE THE SAME AS PRODUCT PRINT.



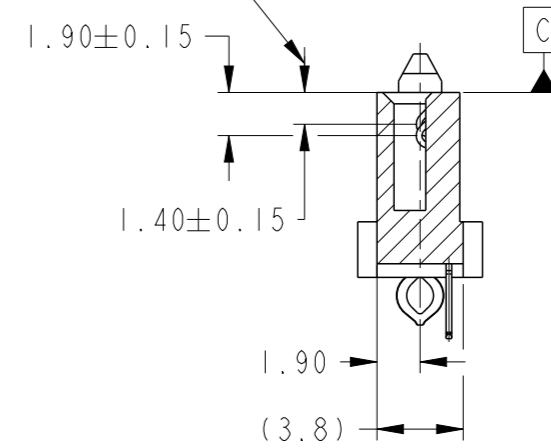
RECOMMENDED P.C.B LAYOUT

spec ref	-	dr	Guat-Lian Loo	2013/05/10	projection	MM	size	A3	scale	1:1	
tolerance std	ISO 406 ISO 1101	eng	Guat-Lian Loo	2016/03/03			ecn no	ELX-S-23205-1			
surface	linear	chr	-	-			product family	-	rel level	Released	
	angular	appr	Koon-Poh Tay	2016/03/04	Amphenol FCI		dwg no	10125340		rev	B
					12G SAS RECEPTACLE VERTICAL PF TYPE ASSY		cat. no.	-	Product - Customer Drw	sheet 2 of 5	

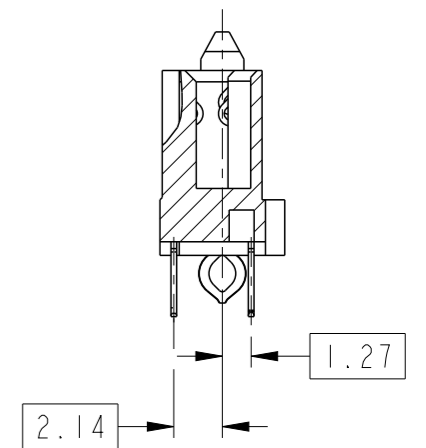
PRODUCT NO	DIM L	DIM M	PLATING	RECOMMENDED P.C BOARD THICKNESS
10125340-003LF	2.70	2.10	NOTE 2	1.57mm (0.062") / 2.36mm(0.093")



P4 & P12
GROUNDS ONLY



SECTION X-X



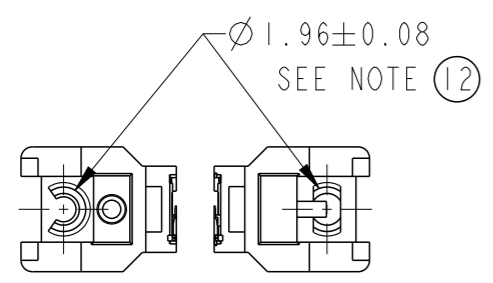
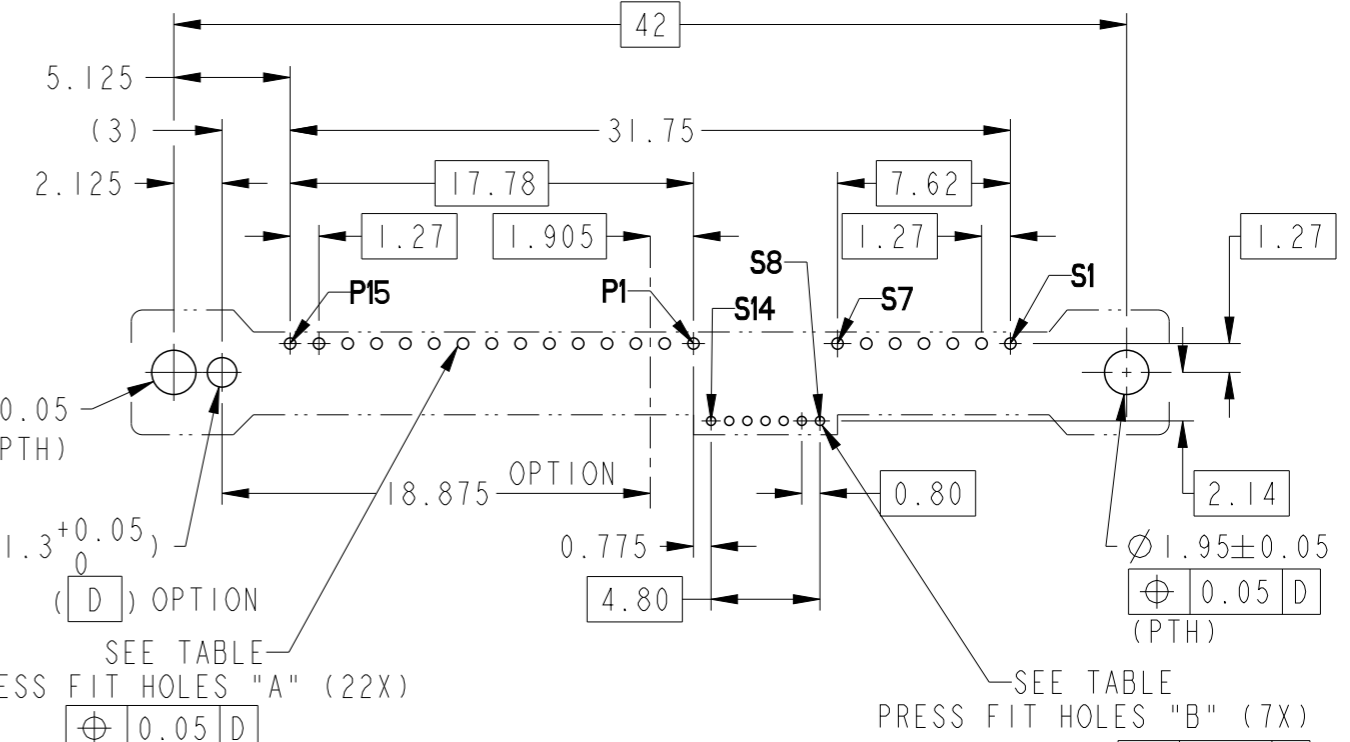
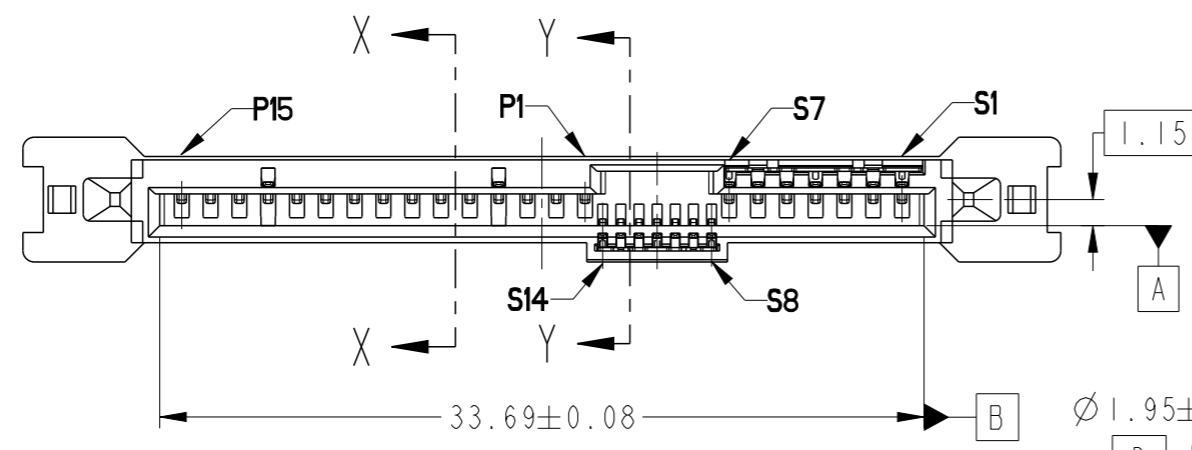
SECTION Y-Y

NOTE:
ALL OTHER DIMENSIONS, REFER TO SHEET 1 & 2.

spec ref	-	dr	Guat-Lian Loo	2013/05/10	projection	MM	size	A3	scale	3:1	
tolerance std	ISO 406 ISO 1101	eng	Guat-Lian Loo	2016/03/03			ecn no	ELX-S-23205-1			
surface	linear	chr	-	-			product family	SAS	rel level	Released	
	angular	appr	Koon-Poh Tay	2016/03/04	12G SAS RECEPTACLE VERTICAL PF TYPE ASSY		dwg no	10125340		rev	B
ISO 1302	0.X ± - 0.XX ± 0.20 0.XXX ± - 0° ± 2°	cat. no.	-	Product - Customer Drw	sheet 3 of 5						

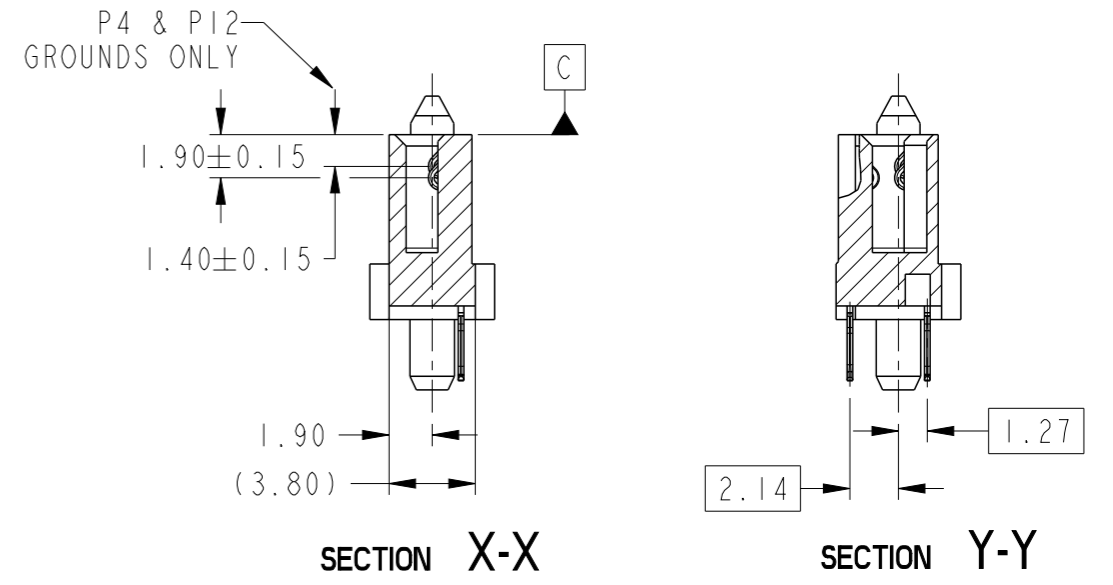
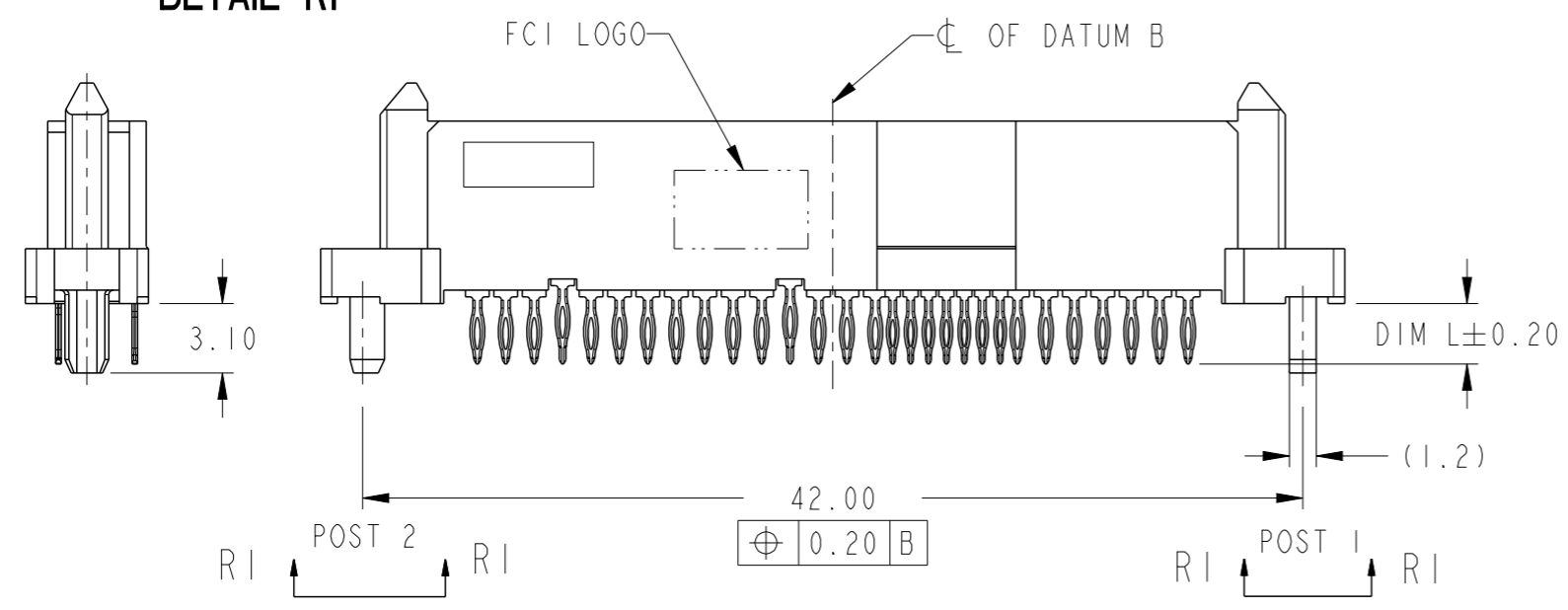
PRODUCT NO	DIM L	PLATING	RECOMMENDED P.C BOARD THICKNESS
10125340-005LF	2.70	NOTE 2	1.57mm (0.062") / 2.36mm(0.093")
10125340-015LF	3.70		2.36mm(0.093")

HOLE	A	B
HOLE DIAMETER AFTER PLATING	0.45 - 0.55 mm	0.35 - 0.45 mm
DRILLED HOLE	0.58 - 0.62 mm	0.47 - 0.51 mm
COPPER PLATING	25 - 50 μm	25 - 50 μm
Sn PLATING	5 - 15 μm	5 - 15 μm



POST 2 POST 1
DETAIL R1

RECOMMENDED P.C.B LAYOUT

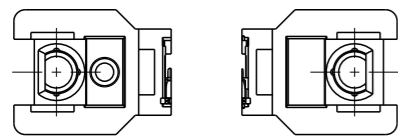
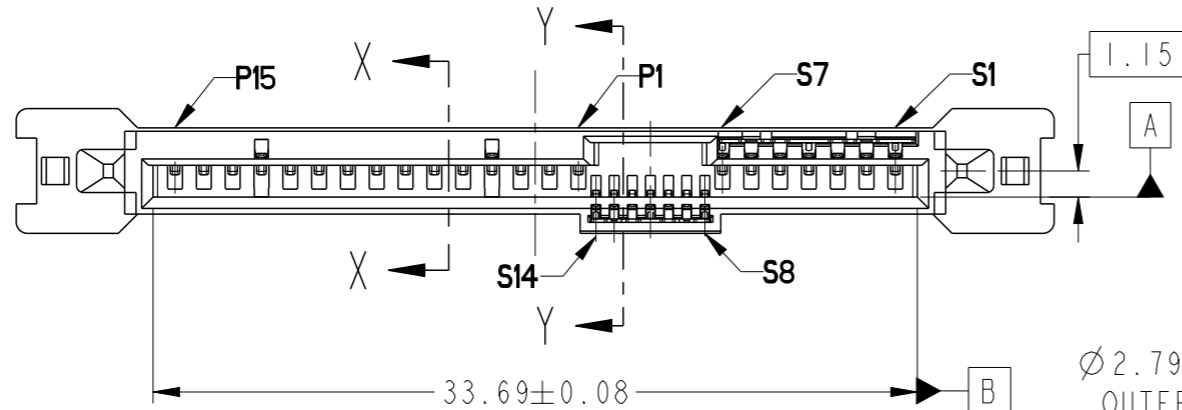


NOTE
ALL OTHER DIMENSIONS, REFER TO SHEET 1 & 2

spec ref	-	dr	Guat-Lian Loo	2013/05/10	projection	MM	size	A3	scale	3:1	
tolerance std	ISO 406 ISO 1101	eng	Guat-Lian Loo	2016/03/03		← →	ecn no	ELX-S-23205-1			
surface	linear	chr	-	-			product family	SAS	rel level	Released	
	angular	appr	Koon-Poh Tay	2016/03/04	12G SAS RECEPTACLE VERTICAL PF TYPE ASSY		dwg no	10125340		rev	B
					cat. no.	-	Product - Customer Drw		sheet 4 of 5		

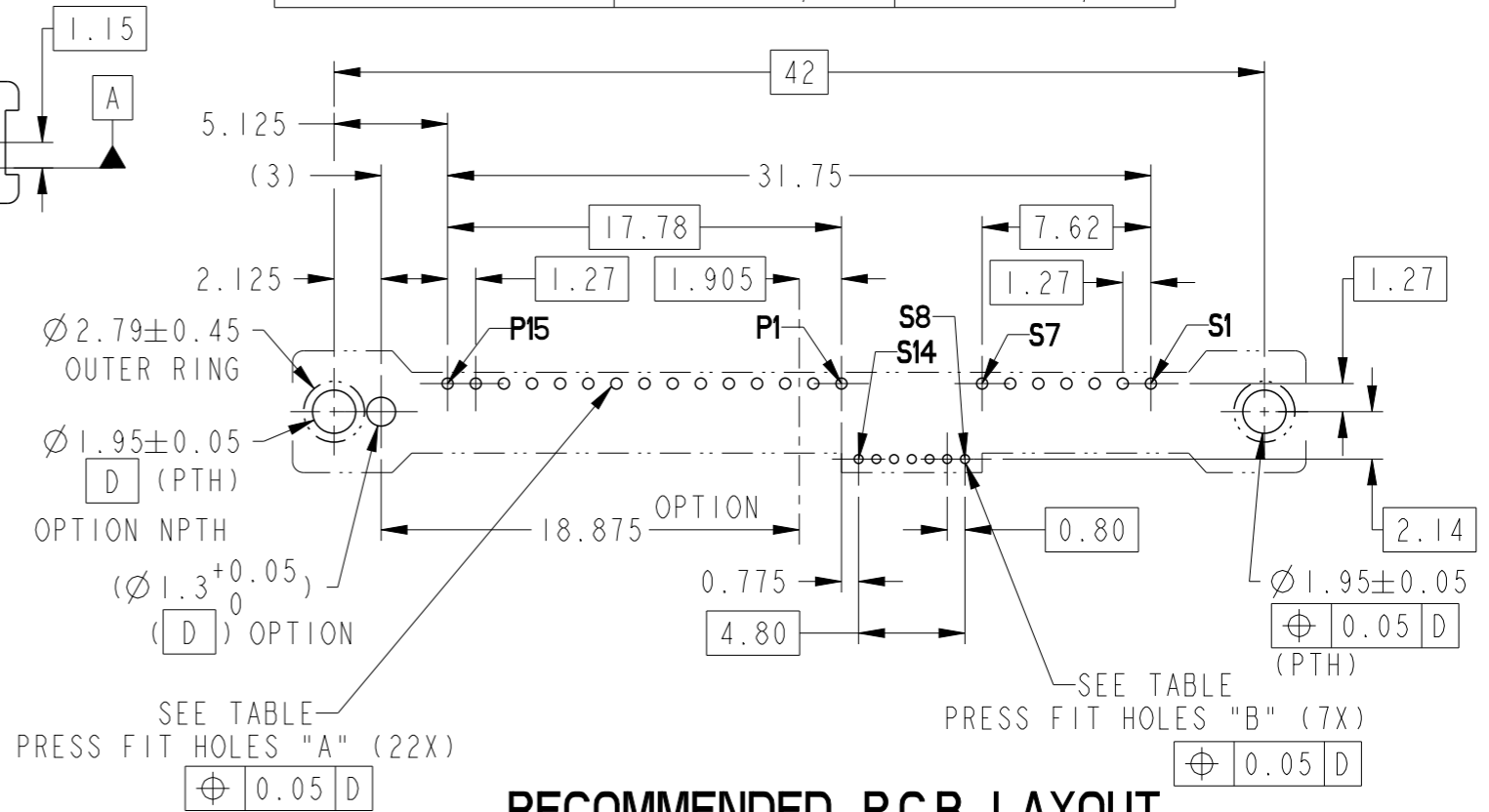
PRODUCT NO	DIM L	PLATING	RECOMMENDED P.C BOARD THICKNESS
10125340-006LF	2.70	NOTE 2	1.57mm (0.062") / 2.36mm(0.093")
10125340-016LF	3.70		2.36mm(0.093")

HOLE	A	B
HOLE DIAMETER AFTER PLATING	0.45 - 0.55 mm	0.35 - 0.45 mm
DRILLED HOLE	0.58 - 0.62 mm	0.47 - 0.51 mm
COPPER PLATING	25 - 50 μ m	25 - 50 μ m
Sn PLATING	5 - 15 μ m	5 - 15 μ m

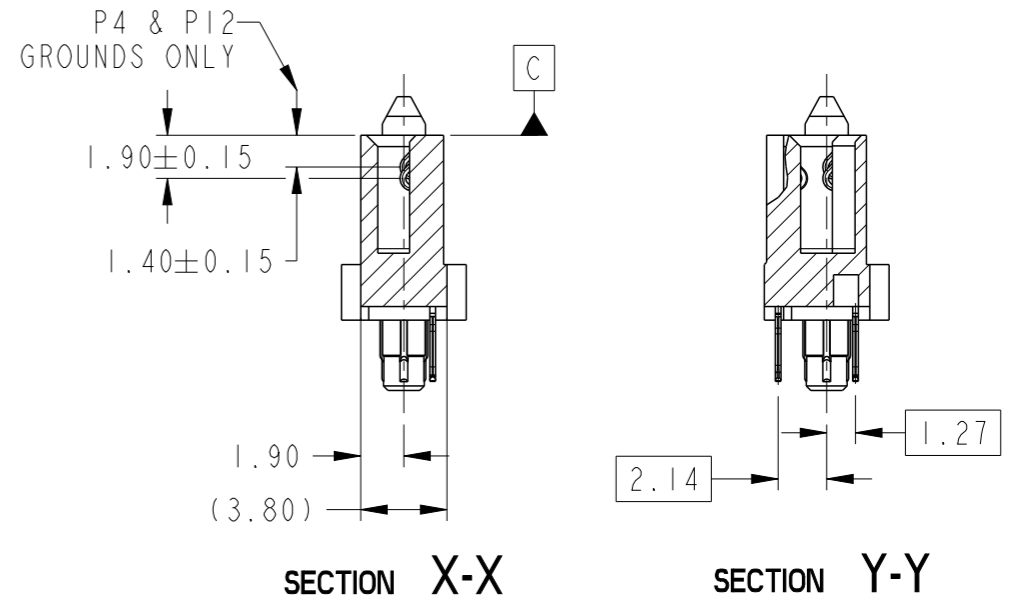
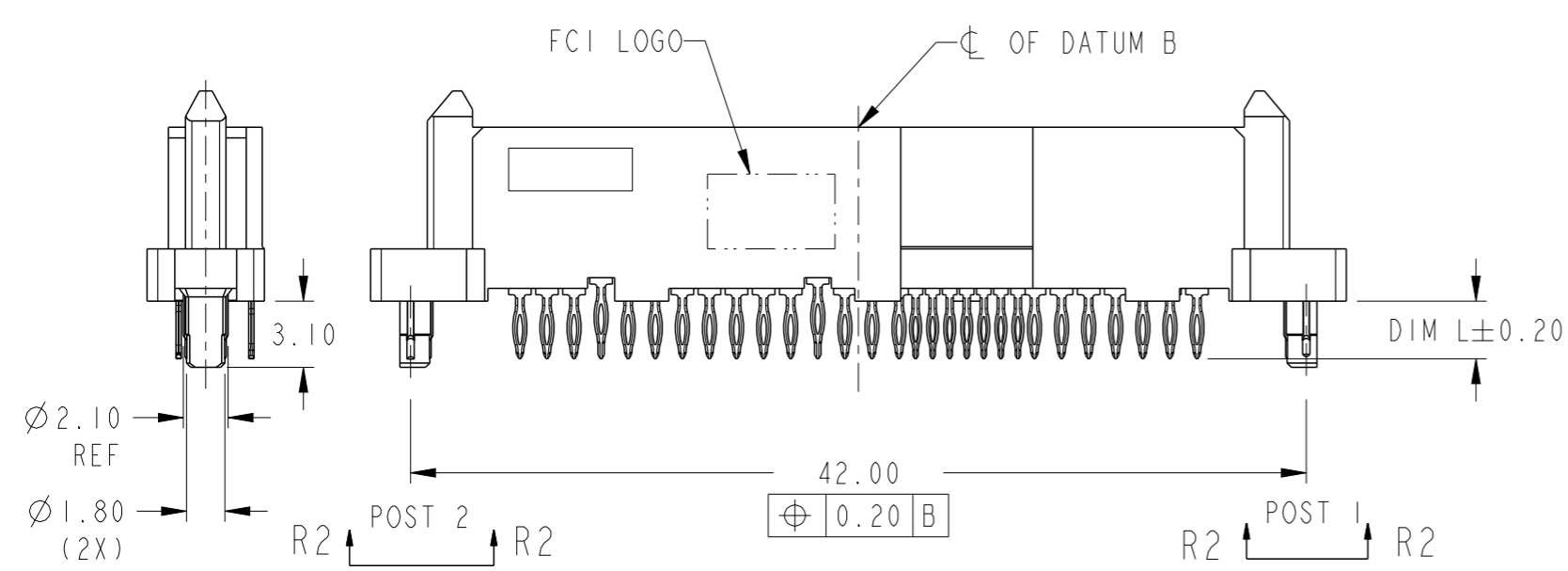


POST 2 POST 1

DETAIL R2



RECOMMENDED P.C.B LAYOUT



SECTION X-X

SECTION Y-Y

NOTE ALL OTHER DIMENSIONS, REFER TO SHEET 1 & 2

spec ref	-	dr	Guat-Lian Loo	2013/05/10	projection	MM	size	A3	scale	3:1
tolerance std	ISO 406 ISO 1101	eng	Guat-Lian Loo	2016/03/03			ecn no	ELX-S-23205-1	rel level	Released
surface	linear	chr	-	apppr			Koon-Poh Tay	2016/03/04		product family
	angular	0°	±°	Amphenol FCI		12G SAS RECEPTACLE VERTICAL PF TYPE ASSY	cat. no. -	Product - Customer Drw	sheet 5 of 5	
							dwg no 10125340			rev B

Amphenol FCI

© 2016 AFCI

Компания «Life Electronics» занимается поставками электронных компонентов импортного и отечественного производства от производителей и со складов крупных дистрибьюторов Европы, Америки и Азии.

С конца 2013 года компания активно расширяет линейку поставок компонентов по направлению коаксиальный кабель, кварцевые генераторы и конденсаторы (керамические, пленочные, электролитические), за счёт заключения дистрибьюторских договоров

Мы предлагаем:

- Конкурентоспособные цены и скидки постоянным клиентам.
- Специальные условия для постоянных клиентов.
- Подбор аналогов.
- Поставку компонентов в любых объемах, удовлетворяющих вашим потребностям.
- Приемлемые сроки поставки, возможна ускоренная поставка.
- Доставку товара в любую точку России и стран СНГ.
- Комплексную поставку.
- Работу по проектам и поставку образцов.
- Формирование склада под заказчика.
- Сертификаты соответствия на поставляемую продукцию (по желанию клиента).
- Тестирование поставляемой продукции.
- Поставку компонентов, требующих военную и космическую приемку.
- Входной контроль качества.
- Наличие сертификата ISO.

В составе нашей компании организован Конструкторский отдел, призванный помогать разработчикам, и инженерам.

Конструкторский отдел помогает осуществить:

- Регистрацию проекта у производителя компонентов.
- Техническую поддержку проекта.
- Защиту от снятия компонента с производства.
- Оценку стоимости проекта по компонентам.
- Изготовление тестовой платы монтаж и пусконаладочные работы.



Тел: +7 (812) 336 43 04 (многоканальный)

Email: org@lifeelectronics.ru