

| ITEM | DESCRIPTION     |
|------|-----------------|
| 1    | SCREW           |
| 2    | COVER ASSEMBLY  |
| 3    | PCB             |
| 4    | INSERT ASSEMBLY |
| 5    | GASKET          |

S19207TA022\*\*

SERIES  
 S19= INTERNAL THREAD FORM C MICRO  
 POLES  
 2= 2 POLE & 3= 3 POLE  
 THREAD  
 07= PG7, M2= M12x1.5  
 MATERIAL AND HOUSING COLOUR  
 G= PA6 GRAY, N= PA6 BLACK, W= PA6 BLACK VO,  
 T= PA12 TRANSPARENT, B= PA6 WHITE  
 CIRCUIT  
 SEE DETAILS IN CATALOGUE  
 VOLTAGE  
 SEE DETAILS IN CATALOGUE  
 SCREW AND GASKET  
 1= NBR PROFILE GASKET & SCREW  
 2= NBR FLAT GASKET & SCREW  
 3= WHITE SILICON PROFILE GASKET & SCREW  
 4= WHITE SILICON FLAT GASKET & SCREW  
 A= NBR PROFILE GASKET & SCREW +2mm  
 B= NBR FLAT GASKET & SCREW +2mm  
 NON STANDARD COMPONENTS  
 14= PACKED IN NEUTRAL BAG  
 5N= PACKED IN BOXES OF 200

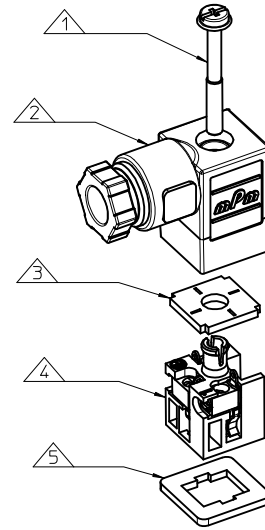
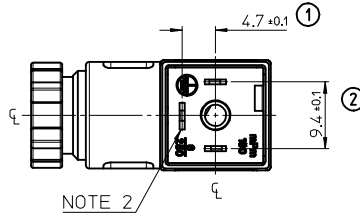
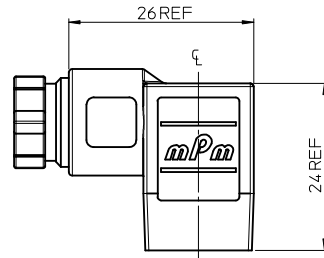
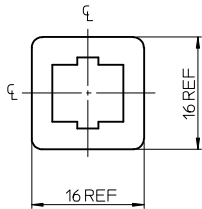
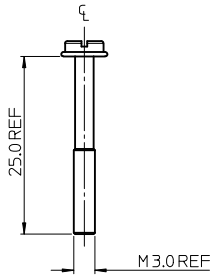
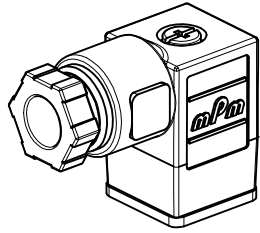
- NOTES
- PLEASE SEE SHEET 2 FOR CURRENTLY CONFIGURED PART NUMBERS. FOR SPECIFIC PART NUMBERS PLEASE CONTACT SALES OR CONSULT THE INTELLIGENT PART NUMBERS IN THE TABLE ATTACHED.
  - EARTH POSITION SHOWN, H6.
  - FOR PACKAGING SEE PACKAGING SPEC PK 121065-S19
  - PRODUCT SPEC: SEE PS-121201-001

LAST INSPECTION NUMBER 2

|  |                                      |   |               |  |                    |   |                               |                            |  |
|--|--------------------------------------|---|---------------|--|--------------------|---|-------------------------------|----------------------------|--|
| <b>REMOVED PART NO:</b><br>EC NO: IPG2014-4527<br>DRW:KORNOYLE 2014/02/26<br>CHK:D:OSHEA 2014/03/06<br>APPR:STIGLIEFFIN 2014/04/01 | <b>QUALITY SYMBOLS</b><br>▽=0<br>▽=0 | <b>GENERAL TOLERANCES (UNLESS SPECIFIED)</b>  |               | <b>DIMENSION STYLE</b><br><b>MM ONLY</b> |                    | <b>SCALE</b><br>2:1                           | <b>DESIGN UNITS</b><br>METRIC | THIRD ANGLE PROJECTION     |  |
|  |                                      | 4 PLACES ± --- ± ---  | mm INCH       | DRAWN BY<br>JOCONNOR                     | DATE<br>2011/05/18 | <b>TITLE</b><br>S19 SERIES<br>INTERNAL THREAD |                               |                            |  |
|  |                                      | 3 PLACES ± --- ± ---  | ± 0.10 ± ---  | CHECKED BY<br>DMAHER                     | DATE<br>2011/05/18 | <b>MATERIAL NO.</b><br>SEE SHEET 2            |                               |                            |  |
|  |                                      | 2 PLACES ± 0.20 ± ---   | ANGULAR ± 2 ° | APPROVED BY<br>EFOLAN                    | DATE<br>2011/06/07 | <b>DOCUMENT NO.</b><br>SD-121064-003          |                               | <b>SHEET NO.</b><br>1 OF 2 |  |
| DRAFT WHERE APPLICABLE MUST REMAIN WITHIN DIMENSIONS   |                                      | THIS DRAWING CONTAINS INFORMATION THAT IS PROPRIETARY TO MOLEX INCORPORATED AND SHOULD NOT BE USED WITHOUT WRITTEN PERMISSION |               |  |                    |   |                               |                            |  |

| PART No.   | mPm PART No.  | DESCRIPTION   | CIRCUIT | VOLTAGE | COLOUR       |
|------------|---------------|---|---------|---------|--------------|
| 1210640794 | S19207NE052   | TYPE C MICRO 2P PG7 BLACK NBR FLAT GASKET                       | E0      | 230V    | DIODE        |
| 1210640798 | S19207TA022   | TYPE C MICRO 2P PG7 TRANSPARENT NBR FLAT GASKET                 | A0      | 24V     | RED LED/LAMP |
| 1210640804 | S19207TA052   | TYPE C MICRO 2P PG7 TRANSPARENT NBR FLAT GASKET                 | A0      | 230V    | RED LED/LAMP |
| 1210640807 | S19207TA11A   | TYPE C MICRO 2P PG7 TRANSPARENT NBR PROFILE GASKET & SCREW +2mm | A1      | 12V     | RED LED/LAMP |
| 1210640808 | S19207TA121   | TYPE C MICRO 2P PG7 TRANSPARENT NBR PROFILE GASKET              | A1      | 24V     | RED LED/LAMP |
| 1210640809 | S19207TA122   | TYPE C MICRO 2P PG7 TRANSPARENT NBR FLAT GASKET                 | A1      | 24V     | RED LED/LAMP |
| 1210640812 | S19207TA12A   | TYPE C MICRO 2P PG7 TRANSPARENT NBR PROFILE GASKET & SCREW +2mm | A1      | 24V     | RED LED/LAMP |
| 1210640818 | S19207TA142   | TYPE C MICRO 2P PG7 TRANSPARENT NBR FLAT GASKET                 | A1      | 115V    | RED LED/LAMP |
| 1210640820 | S19207TA14A   | TYPE C MICRO 2P PG7 TRANSPARENT NBR PROFILE GASKET & SCREW +2mm | A1      | 115V    | RED LED/LAMP |
| 1210640825 | S19207TA1B2   | TYPE C MICRO 2P PG7 TRANSPARENT NBR FLAT GASKET                 | A1      | 24V     | GREEN LED    |
| 1210640828 | S19207TC022   | TYPE C MICRO 2P PG7 TRANSPARENT NBR FLAT GASKET                 | C0      | 24V     | RED LED/LAMP |
| 1210640834 | S19207TC122   | TYPE C MICRO 2P PG7 TRANSPARENT NBR FLAT GASKET                 | C1      | 24V     | RED LED/LAMP |
| 1210640838 | S19207TC321   | TYPE C MICRO 2P PG7 TRANSPARENT NBR PROFILE GASKET              | C3      | 24V     | RED LED/LAMP |
| 1210640839 | S19207TC322   | TYPE C MICRO 2P PG7 TRANSPARENT NBR FLAT GASKET                 | C3      | 24V     | RED LED/LAMP |
| 1210640846 | S19207TC3H1   | TYPE C MICRO 2P PG7 TRANSPARENT NBR PROFILE GASKET              | C3      | 24V     | AMBER LED    |
| 1210640847 | S19207TC3H2   | TYPE C MICRO 2P PG7 TRANSPARENT NBR FLAT GASKET                 | C3      | 24V     | AMBER LED    |
| 1210640851 | S19207TC42    | TYPE C MICRO 2P PG7 TRANSPARENT NBR FLAT GASKET                 | C4      | 12V     | RED LED/LAMP |
| 1210640852 | S19207TC421   | TYPE C MICRO 2P PG7 TRANSPARENT NBR PROFILE GASKET              | C4      | 24V     | RED LED/LAMP |
| 1210640853 | S19207TC422   | TYPE C MICRO 2P PG7 TRANSPARENT NBR FLAT GASKET                 | C4      | 24V     | RED LED/LAMP |
| 1210640854 | S19207TC42A   | TYPE C MICRO 2P PG7 TRANSPARENT NBR PROFILE GASKET & SCREW +2mm | C4      | 24V     | RED LED/LAMP |
| 1210640857 | S19207TC441   | TYPE C MICRO 2P PG7 TRANSPARENT NBR PROFILE GASKET              | C4      | 115V    | RED LED/LAMP |
| 1210640858 | S19207TC442   | TYPE C MICRO 2P PG7 TRANSPARENT NBR FLAT GASKET                 | C4      | 115V    | RED LED/LAMP |
| 1210640863 | S19207TC4B2   | TYPE C MICRO 2P PG7 TRANSPARENT NBR FLAT GASKET                 | C4      | 24V     | GREEN LED    |
| 1210640867 | S19207TC4D2   | TYPE C MICRO 2P PG7 TRANSPARENT NBR FLAT GASKET                 | C4      | 115V    | GREEN LED    |
| 1210640869 | S19207TC4E2   | TYPE C MICRO 2P PG7 TRANSPARENT NBR FLAT GASKET                 | C4      | 230V    | GREEN LED    |
| 1210640871 | S19207TC4H1   | TYPE C MICRO 2P PG7 TRANSPARENT NBR PROFILE GASKET              | C4      | 24V     | AMBER LED    |
| 1210640872 | S19207TC4H2   | TYPE C MICRO 2P PG7 TRANSPARENT NBR FLAT GASKET                 | C4      | 24V     | AMBER LED    |
| 1210641256 | S19207TA021   | TYPE C MICRO 2P PG7 TRANSPARENT NBR PROFILE GASKET              | A0      | 24V     | RED LED/LAMP |
| 1210641294 | S19207TC4B1   | TYPE C MICRO 2P PG7 TRANSPARENT NBR PROFILE GASKET              | C4      | 24V     | GREEN LED    |
| 1210641445 | S19207TA051   | TYPE C MICRO 2P PG7 TRANSPARENT NBR PROFILE GASKET              | A0      | 230V    | RED LED/LAMP |
| 1210641465 | S19207TC323   | TYPE C MICRO 2P PG7 TRANSPARENT WHITE SILICON PROFILE GASKET    | C3      | 24V     | RED LED/LAMP |
| 1210641541 | S192M2TC4H1   | TYPE C MICRO 2P M12x1.5 TRANSPARENT NBR PROFILE GASKET          | C4      | 24V     | AMBER LED    |
| 1210641550 | S192M2TA121   | TYPE C MICRO 2P M12x1.5 TRANSPARENT NBR PROFILE GASKET          | A1      | 24V     | RED LED/LAMP |
| 1210641559 | S19207NE051   | TYPE C MICRO 2P PG7 BLACK NBR PROFILE GASKET                    | E0      | 230V    | DIODE        |
| 1210641710 | S19207TC4C3   | TYPE C MICRO 2P PG7 TRANSPARENT WHITE SILICON PROFILE GASKET    | C4      | 48V     | GREEN LED    |
| 1210641718 | S19207TC4L1   | TYPE C MICRO 2P PG7 TRANSPARENT NBR PROFILE GASKET              | C4      | 115V    | AMBER LED    |
| 1210641727 | S19207TC4L2   | TYPE C MICRO 2P PG7 TRANSPARENT NBR FLAT GASKET                 | C4      | 115V    | AMBER LED    |
| 1210641728 | S19207TA1H1   | TYPE C MICRO 2P PG7 TRANSPARENT NBR PROFILE GASKET              | A1      | 24V     | AMBER LED    |
| 1210641729 | S19207TA1L1   | TYPE C MICRO 2P PG7 TRANSPARENT NBR PROFILE GASKET              | A1      | 115V    | AMBER LED    |
| 1210650292 | S19207TC4225N | TYPE C MICRO 2P PG7 TRANSPARENT NBR FLAT GASKET IN BOX OF 200   | C4      | 24V     | RED LED/LAMP |
| 1210650511 | S19207TC42214 | TYPE C MICRO 2P PG7 TRANSPARENT NBR FLAT GASKET IN NEUTRAL BAG  | C4      | 24V     | RED LED/LAMP |
| 1210641766 | S19207TA1D1   | TYPE C MICRO 2P PG7 TRANSPARENT NBR PROFILE GASKET              | A1      | 115V    | GREEN LED    |
| 1210641797 | S19207NE051P7 | TYPE C MICRO 2P PG7 BLACK NBR PROFILE GASKET, IP67 COMPLIANT    | E0      | 230V    | DIODE        |
| 1210641342 | S19207TC4M1   | TYPE C MICRO 2P PG7 TRANSPARENT NBR PROFILE GASKET              | C4      | 230V    | AMBER LED    |

| <b>SEE SHEET ONE</b><br>EC NO: PG2014-4527<br>DRW:KORNOYLE 2014/02/26<br>CHK:DSHEA 2014/03/06<br>APPR:STGRiffin 2014/04/01<br>DESCRIPTION | <b>QUALITY SYMBOLS</b><br>▽=0<br>▽=0 | <b>GENERAL TOLERANCES (UNLESS SPECIFIED)</b><br><table border="1"> <tr><th colspan="2">mm</th><th>INCH</th></tr> <tr><td>4 PLACES</td><td>± 0.10</td><td>± 0.004</td></tr> <tr><td>3 PLACES</td><td>± 0.15</td><td>± 0.006</td></tr> <tr><td>2 PLACES</td><td>± 0.20</td><td>± 0.008</td></tr> <tr><td>1 PLACE</td><td>± 0.25</td><td>± 0.010</td></tr> </table> | mm      |  | INCH                              | 4 PLACES | ± 0.10 | ± 0.004 | 3 PLACES | ± 0.15 | ± 0.006 | 2 PLACES | ± 0.20 | ± 0.008 | 1 PLACE | ± 0.25 | ± 0.010 | <b>DIMENSION STYLE</b><br><b>MM ONLY</b> | <b>SCALE</b><br><b>2:1</b> | <b>DESIGN UNITS</b><br><b>METRIC</b> | <b>THIRD ANGLE PROJECTION</b> |
|---|--------------------------------------|--|---------|--|-----------------------------------|----------|--------|---------|----------|--------|---------|----------|--------|---------|---------|--------|---------|--|----------------------------|--------------------------------------|-------------------------------|
|   | mm                                   |  | INCH    |  |                                   |          |        |         |          |        |         |          |        |         |         |        |         |  |                            |                                      |                               |
|   | 4 PLACES                             | ± 0.10   | ± 0.004 |  |                                   |          |        |         |          |        |         |          |        |         |         |        |         |  |                            |                                      |                               |
|   | 3 PLACES                             | ± 0.15   | ± 0.006 |  |                                   |          |        |         |          |        |         |          |        |         |         |        |         |  |                            |                                      |                               |
| 2 PLACES  | ± 0.20                               | ± 0.008  |         |  |                                   |          |        |         |          |        |         |          |        |         |         |        |         |  |                            |                                      |                               |
| 1 PLACE   | ± 0.25                               | ± 0.010  |         |  |                                   |          |        |         |          |        |         |          |        |         |         |        |         |  |                            |                                      |                               |
| DRAWN BY<br>JOCONNOR  | DATE<br>2011/05/18                   | <b>TITLE</b><br><b>S19 SERIES INTERNAL THREAD</b>  |         |  |                                   |          |        |         |          |        |         |          |        |         |         |        |         |  |                            |                                      |                               |
| CHECKED BY<br>DMAHER  | DATE<br>2011/05/18                   |  |         |  |                                   |          |        |         |          |        |         |          |        |         |         |        |         |  |                            |                                      |                               |
| APPROVED BY<br>EFOLAN   | DATE<br>2011/06/07                   | <b>MATERIAL NO.</b><br><b>SEE CHART</b>  |         |  |                                   |          |        |         |          |        |         |          |        |         |         |        |         |  |                            |                                      |                               |
|   |                                      | <b>DOCUMENT NO.</b><br><b>SD-121064-003</b>  |         |  | <b>SHEET NO.</b><br><b>2 OF 2</b> |          |        |         |          |        |         |          |        |         |         |        |         |  |                            |                                      |                               |
| DRAFT WHERE APPLICABLE MUST REMAIN WITHIN DIMENSIONS  |                                      |  |         |  |                                   |          |        |         |          |        |         |          |        |         |         |        |         |  |                            |                                      |                               |
| THIS DRAWING CONTAINS INFORMATION THAT IS PROPRIETARY TO MOLEX INCORPORATED AND SHOULD NOT BE USED WITHOUT WRITTEN PERMISSION             |                                      |  |         |  |                                   |          |        |         |          |        |         |          |        |         |         |        |         |  |                            |                                      |                               |



| ITEM | DESCRIPTION     |
|------|-----------------|
| 1    | SCREW           |
| 2    | COVER ASSEMBLY  |
| 3    | PCB             |
| 4    | INSERT ASSEMBLY |
| 5    | GASKET          |

S19207TA022\*\*

SERIES  
 S19= INTERNAL THREAD FORM C MICRO  
 POLES  
 2= 2 POLE & 3= 3 POLE  
 THREAD  
 07= PG7, M2= M12x1.5  
 MATERIAL AND HOUSING COLOUR  
 G= PA6 GRAY, N= PA6 BLACK, W= PA6 BLACK VO,  
 T= PA12 TRANSPARENT, B= PA6 WHITE  
 CIRCUIT  
 SEE DETAILS IN CATALOGUE  
 VOLTAGE  
 SEE DETAILS IN CATALOGUE  
 SCREW AND GASKET  
 1= NBR PROFILE GASKET & SCREW  
 2= NBR FLAT GASKET & SCREW  
 3= WHITE SILICON PROFILE GASKET & SCREW  
 4= WHITE SILICON FLAT GASKET & SCREW  
 A= NBR PROFILE GASKET & SCREW +2mm  
 B= NBR FLAT GASKET & SCREW +2mm  
 NON STANDARD COMPONENTS  
 14= PACKED IN NEUTRAL BAG  
 5N= PACKED IN BOXES OF 200

- NOTES
- PLEASE SEE SHEET 2 FOR CURRENTLY CONFIGURED PART NUMBERS. FOR SPECIFIC PART NUMBERS PLEASE CONTACT SALES OR CONSULT THE INTELLIGENT PART NUMBERS IN THE TABLE ATTACHED.
  - EARTH POSITION SHOWN, H6.
  - FOR PACKAGING SEE PACKAGING SPEC PK 121065-S19
  - PRODUCT SPEC: SEE PS-121201-001

LAST INSPECTION NUMBER 2

| <b>REMOVED PART NO:</b><br>EC NO: IPG2014-4527<br>DRW:KORNOYLE 2014/02/26<br>CHK:D:OSHEA 2014/03/06<br>APPR:STIGLIEFFIN 2014/04/01 | QUALITY SYMBOLS<br>▼=0<br>▽=0                                   | GENERAL TOLERANCES (UNLESS SPECIFIED)<br><table border="1"> <thead> <tr> <th></th> <th>mm</th> <th>INCH</th> </tr> </thead> <tbody> <tr> <td>4 PLACES</td> <td>± ---</td> <td>± ---</td> </tr> <tr> <td>3 PLACES</td> <td>± ---</td> <td>± ---</td> </tr> <tr> <td>2 PLACES</td> <td>± 0.10</td> <td>± ---</td> </tr> <tr> <td>1 PLACE</td> <td>± 0.20</td> <td>± ---</td> </tr> <tr> <td colspan="3">ANGULAR ± 2 °</td> </tr> </tbody> </table> |       | mm | INCH | 4 PLACES | ± --- | ± --- | 3 PLACES | ± --- | ± --- | 2 PLACES | ± 0.10 | ± --- | 1 PLACE | ± 0.20 | ± --- | ANGULAR ± 2 ° |  |  | DIMENSION STYLE<br><b>MM ONLY</b> | SCALE<br><b>2:1</b> | DESIGN UNITS<br><b>METRIC</b> | THIRD ANGLE PROJECTION |
|--|---|--|-------|----|------|----------|-------|-------|----------|-------|-------|----------|--------|-------|---------|--------|-------|---------------|--|--|-----------------------------------|---------------------|-------------------------------|------------------------|
|  |   | mm   | INCH  |    |      |          |       |       |          |       |       |          |        |       |         |        |       |               |  |  |                                   |                     |                               |                        |
|  | 4 PLACES  | ± ---  | ± --- |    |      |          |       |       |          |       |       |          |        |       |         |        |       |               |  |  |                                   |                     |                               |                        |
|  | 3 PLACES  | ± ---  | ± --- |    |      |          |       |       |          |       |       |          |        |       |         |        |       |               |  |  |                                   |                     |                               |                        |
| 2 PLACES   | ± 0.10  | ± ---  |       |    |      |          |       |       |          |       |       |          |        |       |         |        |       |               |  |  |                                   |                     |                               |                        |
| 1 PLACE  | ± 0.20  | ± ---  |       |    |      |          |       |       |          |       |       |          |        |       |         |        |       |               |  |  |                                   |                     |                               |                        |
| ANGULAR ± 2 °  |   |  |       |    |      |          |       |       |          |       |       |          |        |       |         |        |       |               |  |  |                                   |                     |                               |                        |
| DRAWN BY<br>JOCONNOR 2011/05/18<br>CHECKED BY<br>DMAHER 2011/05/18<br>APPROVED BY<br>EFOLAN 2011/06/07                             | DATE<br>TITLE<br><b>S19 SERIES<br/>         INTERNAL THREAD</b> | <b>MOLEX INCORPORATED</b>  |       |    |      |          |       |       |          |       |       |          |        |       |         |        |       |               |  |  |                                   |                     |                               |                        |
| MATERIAL NO.<br><b>SEE SHEET 2</b>   | DOCUMENT NO.<br><b>SD-121064-003</b>                            |  |       |    |      |          |       |       |          |       |       |          |        |       |         |        |       |               |  |  |                                   |                     |                               |                        |
| DRAFT WHERE APPLICABLE MUST REMAIN WITHIN DIMENSIONS   |   | THIS DRAWING CONTAINS INFORMATION THAT IS PROPRIETARY TO MOLEX INCORPORATED AND SHOULD NOT BE USED WITHOUT WRITTEN PERMISSION  |       |    |      |          |       |       |          |       |       |          |        |       |         |        |       |               |  |  |                                   |                     |                               |                        |

| PART No.   | mPm PART No.  | DESCRIPTION   | CIRCUIT | VOLTAGE | COLOUR       |
|------------|---------------|---|---------|---------|--------------|
| 1210640794 | S19207NE052   | TYPE C MICRO 2P PG7 BLACK NBR FLAT GASKET                       | E0      | 230V    | DIODE        |
| 1210640798 | S19207TA022   | TYPE C MICRO 2P PG7 TRANSPARENT NBR FLAT GASKET                 | A0      | 24V     | RED LED/LAMP |
| 1210640804 | S19207TA052   | TYPE C MICRO 2P PG7 TRANSPARENT NBR FLAT GASKET                 | A0      | 230V    | RED LED/LAMP |
| 1210640807 | S19207TA11A   | TYPE C MICRO 2P PG7 TRANSPARENT NBR PROFILE GASKET & SCREW +2mm | A1      | 12V     | RED LED/LAMP |
| 1210640808 | S19207TA121   | TYPE C MICRO 2P PG7 TRANSPARENT NBR PROFILE GASKET              | A1      | 24V     | RED LED/LAMP |
| 1210640809 | S19207TA122   | TYPE C MICRO 2P PG7 TRANSPARENT NBR FLAT GASKET                 | A1      | 24V     | RED LED/LAMP |
| 1210640812 | S19207TA12A   | TYPE C MICRO 2P PG7 TRANSPARENT NBR PROFILE GASKET & SCREW +2mm | A1      | 24V     | RED LED/LAMP |
| 1210640818 | S19207TA142   | TYPE C MICRO 2P PG7 TRANSPARENT NBR FLAT GASKET                 | A1      | 115V    | RED LED/LAMP |
| 1210640820 | S19207TA14A   | TYPE C MICRO 2P PG7 TRANSPARENT NBR PROFILE GASKET & SCREW +2mm | A1      | 115V    | RED LED/LAMP |
| 1210640825 | S19207TA1B2   | TYPE C MICRO 2P PG7 TRANSPARENT NBR FLAT GASKET                 | A1      | 24V     | GREEN LED    |
| 1210640828 | S19207TC022   | TYPE C MICRO 2P PG7 TRANSPARENT NBR FLAT GASKET                 | C0      | 24V     | RED LED/LAMP |
| 1210640834 | S19207TC122   | TYPE C MICRO 2P PG7 TRANSPARENT NBR FLAT GASKET                 | C1      | 24V     | RED LED/LAMP |
| 1210640838 | S19207TC321   | TYPE C MICRO 2P PG7 TRANSPARENT NBR PROFILE GASKET              | C3      | 24V     | RED LED/LAMP |
| 1210640839 | S19207TC322   | TYPE C MICRO 2P PG7 TRANSPARENT NBR FLAT GASKET                 | C3      | 24V     | RED LED/LAMP |
| 1210640846 | S19207TC3H1   | TYPE C MICRO 2P PG7 TRANSPARENT NBR PROFILE GASKET              | C3      | 24V     | AMBER LED    |
| 1210640847 | S19207TC3H2   | TYPE C MICRO 2P PG7 TRANSPARENT NBR FLAT GASKET                 | C3      | 24V     | AMBER LED    |
| 1210640851 | S19207TC42    | TYPE C MICRO 2P PG7 TRANSPARENT NBR FLAT GASKET                 | C4      | 12V     | RED LED/LAMP |
| 1210640852 | S19207TC421   | TYPE C MICRO 2P PG7 TRANSPARENT NBR PROFILE GASKET              | C4      | 24V     | RED LED/LAMP |
| 1210640853 | S19207TC422   | TYPE C MICRO 2P PG7 TRANSPARENT NBR FLAT GASKET                 | C4      | 24V     | RED LED/LAMP |
| 1210640854 | S19207TC42A   | TYPE C MICRO 2P PG7 TRANSPARENT NBR PROFILE GASKET & SCREW +2mm | C4      | 24V     | RED LED/LAMP |
| 1210640857 | S19207TC441   | TYPE C MICRO 2P PG7 TRANSPARENT NBR PROFILE GASKET              | C4      | 115V    | RED LED/LAMP |
| 1210640858 | S19207TC442   | TYPE C MICRO 2P PG7 TRANSPARENT NBR FLAT GASKET                 | C4      | 115V    | RED LED/LAMP |
| 1210640863 | S19207TC4B2   | TYPE C MICRO 2P PG7 TRANSPARENT NBR FLAT GASKET                 | C4      | 24V     | GREEN LED    |
| 1210640867 | S19207TC4D2   | TYPE C MICRO 2P PG7 TRANSPARENT NBR FLAT GASKET                 | C4      | 115V    | GREEN LED    |
| 1210640869 | S19207TC4E2   | TYPE C MICRO 2P PG7 TRANSPARENT NBR FLAT GASKET                 | C4      | 230V    | GREEN LED    |
| 1210640871 | S19207TC4H1   | TYPE C MICRO 2P PG7 TRANSPARENT NBR PROFILE GASKET              | C4      | 24V     | AMBER LED    |
| 1210640872 | S19207TC4H2   | TYPE C MICRO 2P PG7 TRANSPARENT NBR FLAT GASKET                 | C4      | 24V     | AMBER LED    |
| 1210641256 | S19207TA021   | TYPE C MICRO 2P PG7 TRANSPARENT NBR PROFILE GASKET              | A0      | 24V     | RED LED/LAMP |
| 1210641294 | S19207TC4B1   | TYPE C MICRO 2P PG7 TRANSPARENT NBR PROFILE GASKET              | C4      | 24V     | GREEN LED    |
| 1210641445 | S19207TA051   | TYPE C MICRO 2P PG7 TRANSPARENT NBR PROFILE GASKET              | A0      | 230V    | RED LED/LAMP |
| 1210641465 | S19207TC323   | TYPE C MICRO 2P PG7 TRANSPARENT WHITE SILICON PROFILE GASKET    | C3      | 24V     | RED LED/LAMP |
| 1210641541 | S192M2TC4H1   | TYPE C MICRO 2P M12x1.5 TRANSPARENT NBR PROFILE GASKET          | C4      | 24V     | AMBER LED    |
| 1210641550 | S192M2TA121   | TYPE C MICRO 2P M12x1.5 TRANSPARENT NBR PROFILE GASKET          | A1      | 24V     | RED LED/LAMP |
| 1210641559 | S19207NE051   | TYPE C MICRO 2P PG7 BLACK NBR PROFILE GASKET                    | E0      | 230V    | DIODE        |
| 1210641710 | S19207TC4C3   | TYPE C MICRO 2P PG7 TRANSPARENT WHITE SILICON PROFILE GASKET    | C4      | 48V     | GREEN LED    |
| 1210641718 | S19207TC4L1   | TYPE C MICRO 2P PG7 TRANSPARENT NBR PROFILE GASKET              | C4      | 115V    | AMBER LED    |
| 1210641727 | S19207TC4L2   | TYPE C MICRO 2P PG7 TRANSPARENT NBR FLAT GASKET                 | C4      | 115V    | AMBER LED    |
| 1210641728 | S19207TA1H1   | TYPE C MICRO 2P PG7 TRANSPARENT NBR PROFILE GASKET              | A1      | 24V     | AMBER LED    |
| 1210641729 | S19207TA1L1   | TYPE C MICRO 2P PG7 TRANSPARENT NBR PROFILE GASKET              | A1      | 115V    | AMBER LED    |
| 1210650292 | S19207TC4225N | TYPE C MICRO 2P PG7 TRANSPARENT NBR FLAT GASKET IN BOX OF 200   | C4      | 24V     | RED LED/LAMP |
| 1210650511 | S19207TC42214 | TYPE C MICRO 2P PG7 TRANSPARENT NBR FLAT GASKET IN NEUTRAL BAG  | C4      | 24V     | RED LED/LAMP |
| 1210641766 | S19207TA1D1   | TYPE C MICRO 2P PG7 TRANSPARENT NBR PROFILE GASKET              | A1      | 115V    | GREEN LED    |
| 1210641797 | S19207NE051P7 | TYPE C MICRO 2P PG7 BLACK NBR PROFILE GASKET, IP67 COMPLIANT    | E0      | 230V    | DIODE        |
| 1210641342 | S19207TC4M1   | TYPE C MICRO 2P PG7 TRANSPARENT NBR PROFILE GASKET              | C4      | 230V    | AMBER LED    |

| <b>SEE SHEET ONE</b><br>EC NO: PG2014-4527<br>DRW:KORNOYLE 2014/02/26<br>CHK:DSHEA 2014/03/06<br>APPR:STGRiffin 2014/04/01<br>DESCRIPTION | <b>QUALITY SYMBOLS</b><br>▽=0<br>▽=0 | <b>GENERAL TOLERANCES (UNLESS SPECIFIED)</b><br><table border="1"> <tr><th></th><th>mm</th><th>INCH</th></tr> <tr><td>4 PLACES</td><td>± ---</td><td>± ---</td></tr> <tr><td>3 PLACES</td><td>± ---</td><td>± ---</td></tr> <tr><td>2 PLACES</td><td>± 0.10</td><td>± ---</td></tr> <tr><td>1 PLACE</td><td>± 0.20</td><td>± ---</td></tr> </table> ANGULAR ± 2 ° |   | mm                                | INCH | 4 PLACES | ± --- | ± --- | 3 PLACES | ± --- | ± --- | 2 PLACES | ± 0.10 | ± --- | 1 PLACE | ± 0.20 | ± --- | <b>DIMENSION STYLE</b><br><b>MM ONLY</b> | <b>SCALE</b><br><b>2:1</b> | <b>DESIGN UNITS</b><br><b>METRIC</b> | <b>THIRD ANGLE PROJECTION</b> |
|---|--------------------------------------|---|---|-----------------------------------|------|----------|-------|-------|----------|-------|-------|----------|--------|-------|---------|--------|-------|--|----------------------------|--------------------------------------|-------------------------------|
|   |                                      | mm  | INCH  |                                   |      |          |       |       |          |       |       |          |        |       |         |        |       |  |                            |                                      |                               |
|   | 4 PLACES                             | ± ---   | ± ---                                       |                                   |      |          |       |       |          |       |       |          |        |       |         |        |       |  |                            |                                      |                               |
|   | 3 PLACES                             | ± ---   | ± ---                                       |                                   |      |          |       |       |          |       |       |          |        |       |         |        |       |  |                            |                                      |                               |
| 2 PLACES  | ± 0.10                               | ± ---   |   |                                   |      |          |       |       |          |       |       |          |        |       |         |        |       |  |                            |                                      |                               |
| 1 PLACE   | ± 0.20                               | ± ---   |   |                                   |      |          |       |       |          |       |       |          |        |       |         |        |       |  |                            |                                      |                               |
| DRAWN BY<br>JOCONNOR  | DATE<br>2011/05/18                   | <b>TITLE</b><br><b>S19 SERIES<br/>INTERNAL THREAD</b>   |   |                                   |      |          |       |       |          |       |       |          |        |       |         |        |       |  |                            |                                      |                               |
| CHECKED BY<br>DMAHER  | DATE<br>2011/05/18                   |   |   |                                   |      |          |       |       |          |       |       |          |        |       |         |        |       |  |                            |                                      |                               |
| APPROVED BY<br>EFOLAN   | DATE<br>2011/06/07                   | <b>MOLEX INCORPORATED</b>   |   |                                   |      |          |       |       |          |       |       |          |        |       |         |        |       |  |                            |                                      |                               |
| <b>DRAFT WHERE APPLICABLE<br/>MUST REMAIN<br/>WITHIN DIMENSIONS</b>   |                                      | <b>MATERIAL NO.</b><br><b>SEE CHART</b>   | <b>DOCUMENT NO.</b><br><b>SD-121064-003</b> | <b>SHEET NO.</b><br><b>2 OF 2</b> |      |          |       |       |          |       |       |          |        |       |         |        |       |  |                            |                                      |                               |
| THIS DRAWING CONTAINS INFORMATION THAT IS PROPRIETARY TO MOLEX INCORPORATED AND SHOULD NOT BE USED WITHOUT WRITTEN PERMISSION             |                                      |   |   |                                   |      |          |       |       |          |       |       |          |        |       |         |        |       |  |                            |                                      |                               |

Компания «Life Electronics» занимается поставками электронных компонентов импортного и отечественного производства от производителей и со складов крупных дистрибьюторов Европы, Америки и Азии.

С конца 2013 года компания активно расширяет линейку поставок компонентов по направлению коаксиальный кабель, кварцевые генераторы и конденсаторы (керамические, пленочные, электролитические), за счёт заключения дистрибьюторских договоров

Мы предлагаем:

- Конкуренеспособные цены и скидки постоянным клиентам.
- Специальные условия для постоянных клиентов.
- Подбор аналогов.
- Поставку компонентов в любых объемах, удовлетворяющих вашим потребностям.
- Приемлемые сроки поставки, возможна ускоренная поставка.
- Доставку товара в любую точку России и стран СНГ.
- Комплексную поставку.
- Работу по проектам и поставку образцов.
- Формирование склада под заказчика.
- Сертификаты соответствия на поставляемую продукцию (по желанию клиента).
- Тестирование поставляемой продукции.
- Поставку компонентов, требующих военную и космическую приемку.
- Входной контроль качества.
- Наличие сертификата ISO.

В составе нашей компании организован Конструкторский отдел, призванный помогать разработчикам, и инженерам.

Конструкторский отдел помогает осуществить:

- Регистрацию проекта у производителя компонентов.
- Техническую поддержку проекта.
- Защиту от снятия компонента с производства.
- Оценку стоимости проекта по компонентам.
- Изготовление тестовой платы монтаж и пусконаладочные работы.



Тел: +7 (812) 336 43 04 (многоканальный)

Email: [org@lifeelectronics.ru](mailto:org@lifeelectronics.ru)