

## TINA3-S

~13° spot beam optimized for CREE XP-E.  
Assembly with holder, installation tape and  
location pins.

### TECHNICAL SPECIFICATIONS:

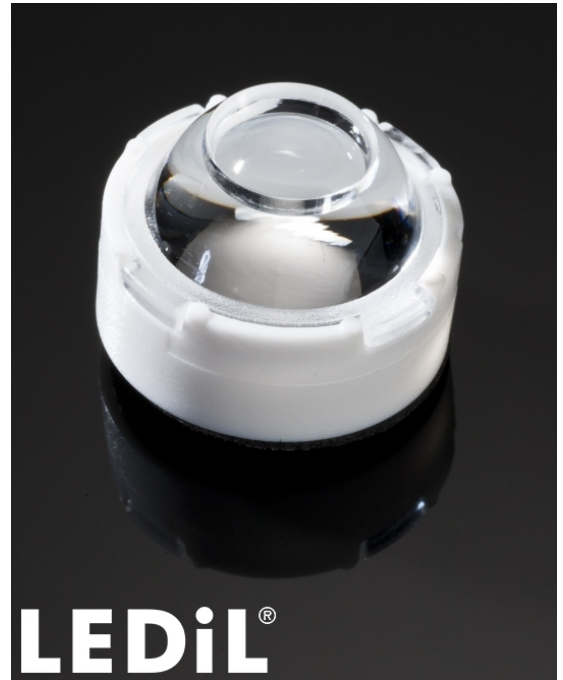
Dimensions	Ø 16.1 mm
Height	11.4 mm
Fastening	tape, pin
ROHS compliant	yes ⓘ

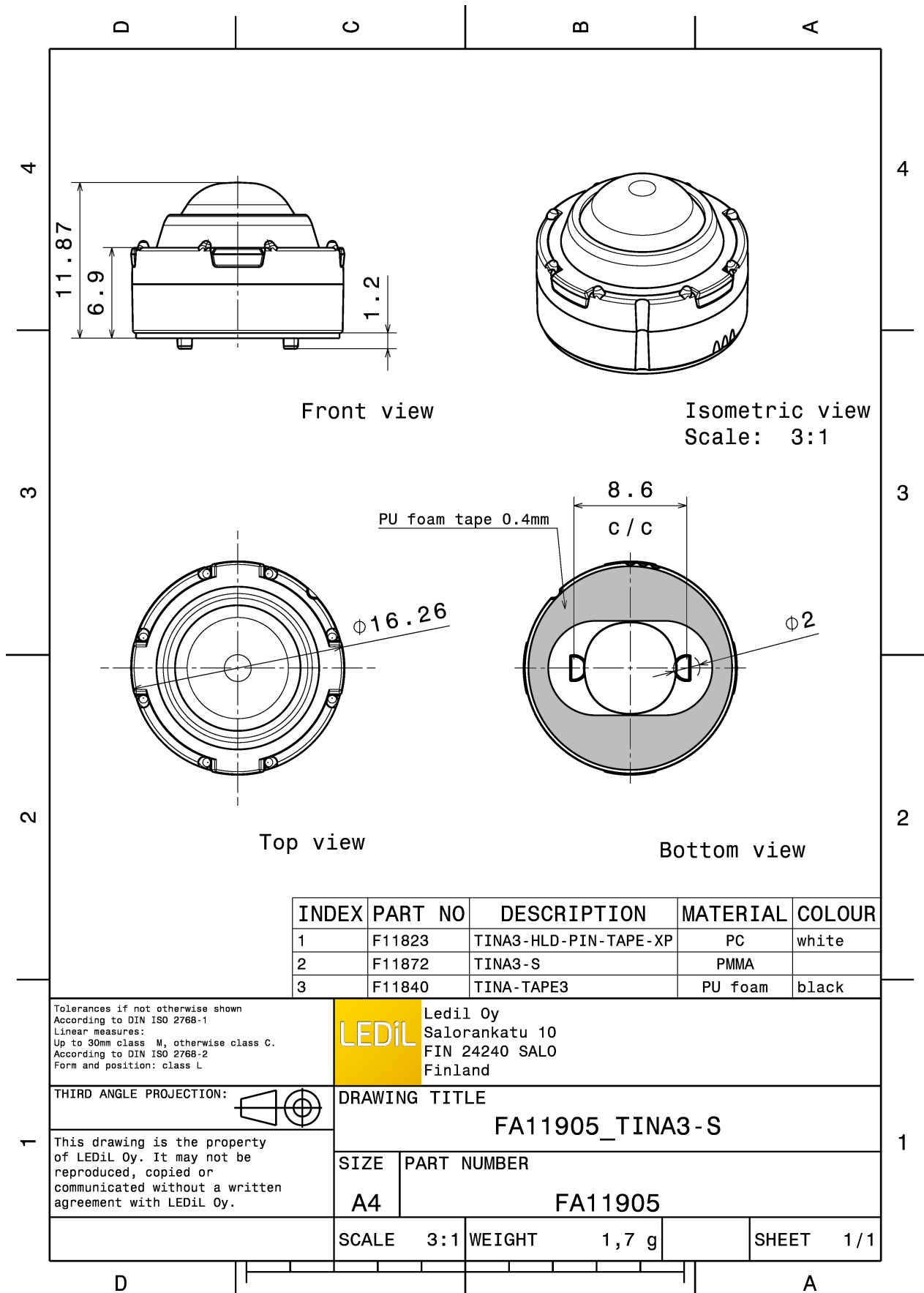
### MATERIAL SPECIFICATIONS:

Component	Type	Material	Colour	Finish
TINA3-S	Single lens	PMMA	clear	
TINA3-HLD-PIN-TAPE-XP	Holder	PC	white	
TINA-TAPE3	Tape	PU tape	black	

### ORDERING INFORMATION:

Component		Qty in box	MOQ	MPQ	Box weight (kg)
FA11905_TINA3-S	Single lens	2016	288	288	3.7
» Box size:					

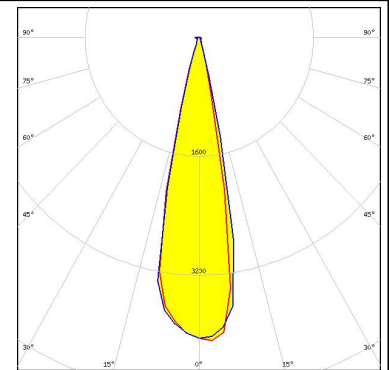
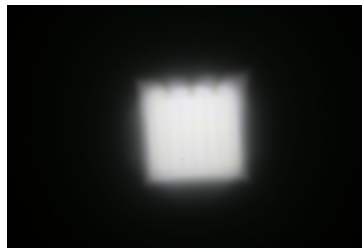




#### PHOTOMETRIC DATA (MEASURED):

#### CREE

LED XM-L  
 FWHM 23.0°  
 Efficiency 86 %  
 Peak intensity 3.4 cd/lm  
 LEDs/each optic 1  
 Light colour White  
 Required components:



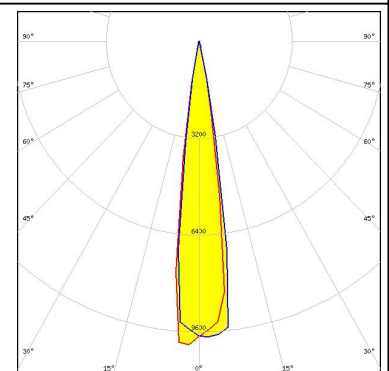
#### CREE

LED XP-E  
 FWHM 10.0°  
 Efficiency 86 %  
 Peak intensity 15.8 cd/lm  
 LEDs/each optic 1  
 Light colour White  
 Required components:



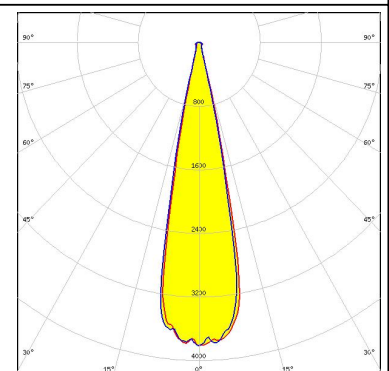
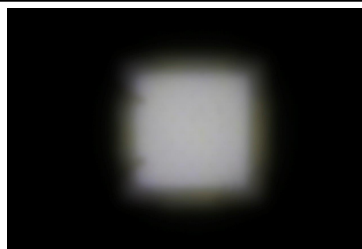
#### CREE

LED XP-G  
 FWHM 15.0°  
 Efficiency 86 %  
 Peak intensity 6.7 cd/lm  
 LEDs/each optic 1  
 Light colour White  
 Required components:



#### CREE

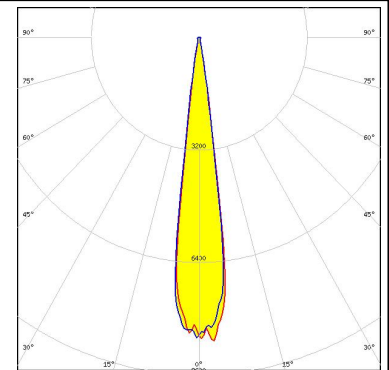
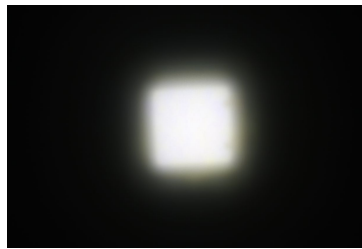
LED XP-L HD  
 FWHM 23.0°  
 Efficiency 87 %  
 Peak intensity 3.8 cd/lm  
 LEDs/each optic 1  
 Light colour White  
 Required components:



### PHOTOMETRIC DATA (MEASURED):



LED XP-L HI  
FWHM 15.0°  
Efficiency 88 %  
Peak intensity 8.9 cd/lm  
LEDs/each optic 1  
Light colour White  
Required components:



LED LUXEON A  
FWHM 16.0°  
Efficiency 83 %  
Peak intensity 6.7 cd/lm  
LEDs/each optic 1  
Light colour White  
Required components:



LED LUXEON Rebel  
FWHM 11.0°  
Efficiency 83 %  
Peak intensity 12.9 cd/lm  
LEDs/each optic 1  
Light colour White  
Required components:

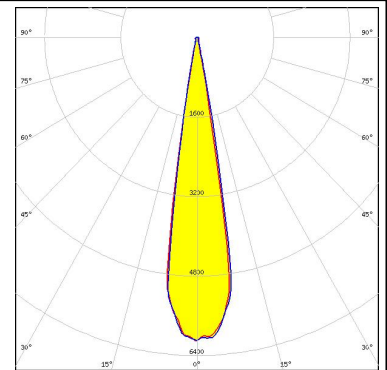
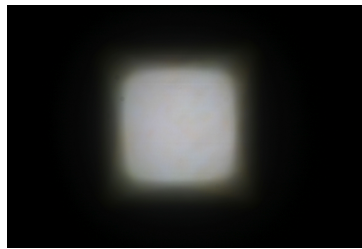


LED LUXEON Rebel ES  
FWHM 18.5°  
Efficiency 82 %  
Peak intensity 6.9 cd/lm  
LEDs/each optic 1  
Light colour White  
Required components:

### PHOTOMETRIC DATA (MEASURED):



LED NVSW219F  
FWHM 18.0°  
Efficiency 85 %  
Peak intensity 6.1 cd/lm  
LEDs/each optic 1  
Light colour White  
Required components:

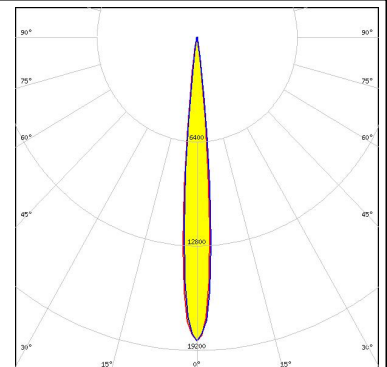


LED NVSxx19A  
FWHM 16.5°  
Efficiency 87 %  
Peak intensity 6.8 cd/lm  
LEDs/each optic 1  
Light colour White  
Required components:



Ospto Semiconductors

LED OSOLON SSL 150  
FWHM 9.0°  
Efficiency 84 %  
Peak intensity 18.4 cd/lm  
LEDs/each optic 1  
Light colour White  
Required components:



Ospto Semiconductors

LED OSOLON SSL 80  
FWHM 11.0°  
Efficiency 86 %  
Peak intensity 14 cd/lm  
LEDs/each optic 1  
Light colour White  
Required components:

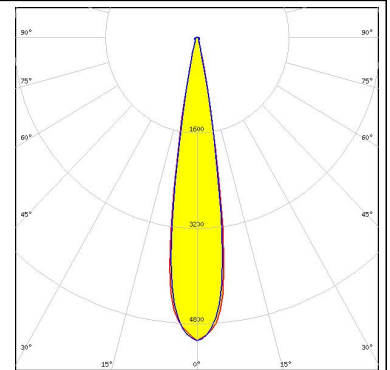
## PHOTOMETRIC DATA (MEASURED):

		
SEOUL SEMICONDUCTOR		
LED	Z5	
FWHM	10.0°	
Efficiency	80 %	
Peak intensity	16.4 cd/Im	
LEDs/each optic	1	
Light colour	White	
Required components:		

#### PHOTOMETRIC DATA (SIMULATED):



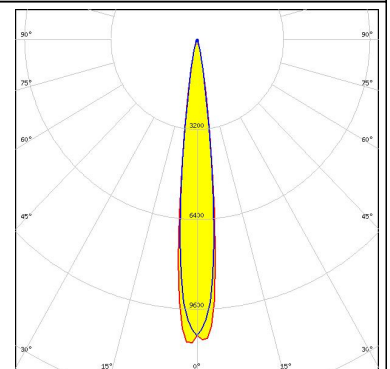
**LED** XP-G3  
**FWHM** 18.0°  
**Efficiency** 78 %  
**Peak intensity** 5.1 cd/lm  
**LEDs/each optic** 1  
**Light colour** Blue  
**Required components:**



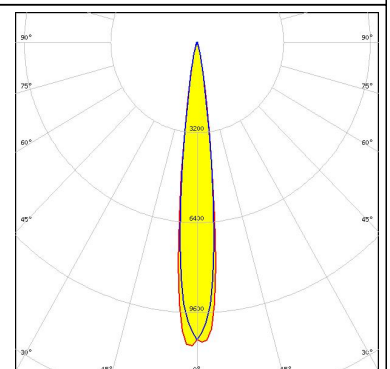
**LED** SFH 4715AS  
**FWHM** 13.0°  
**Efficiency** 88 %  
**Peak intensity** 10.6 cd/lm  
**LEDs/each optic** 1  
**Light colour** IR  
**Required components:**




**LED** SFH 4715S  
**FWHM** 13.0°  
**Efficiency** 87 %  
**LEDs/each optic** 1  
**Light colour** IR  
**Required components:**

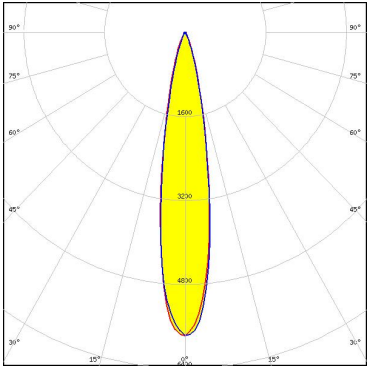


**LED** SFH 4725S  
**FWHM** 13.0°  
**Efficiency** 87 %  
**LEDs/each optic** 1  
**Light colour** IR  
**Required components:**



## PHOTOMETRIC DATA (SIMULATED):

	
SEOUL SEMICONDUCTOR	
LED	Z8Y22
FWHM	15.0°
Efficiency	80 %
Peak intensity	5.4 cd/lm
LEDs/each optic	1
Light colour	White
Required components:	





### GENERAL INFORMATION:

NOTE: The typical beam angle will be changed by different color, chip size and chip position tolerance. The typical total beam angle is the full angle measured where the luminous intensity is half of the peak value.

### MATERIALS:

As part of our continuous research and improvement processes, and to ensure the best possible quality and availability of our products, LEDiL reserves the right to change material grades without notice.

### PRODUCT DATA USER AGREEMENT AND DISCLAIMER:

The measured data in the provided downloadable LEDiL Product Datasheets and Mechanical 2D-Drawings is rounded and provided as reference for planning. LEDiL Oy's optical specifications have been verified by conducting performance testing of the products in accordance with the company's quality system. The reported data are averaged results of multiple measurements with typical variation. LEDiL Oy reserves the right to without prior notification make changes and improvements to its products.

LEDiL Oy assumes neither warranty, nor guarantee nor any other liability of any kind for the contents and correctness of the provided data. The provided data has been generated with highest diligence but the provided data may in reality not represent the complete possible variation range of all intrinsic parameters. Therefore, in certain cases a deviation from the provided data could occur.

LEDiL Oy reserves the right to undertake technical changes of its products without further notification which could lead to changes in the provided data. LEDiL Oy assumes no liability of any kind for the possible deviation from any provided data or any other damage resulting from the usage of the provided data.

The user agrees to this disclaimer and user agreement with the download or usage of the provided files.

#### LEDiL Oy

Joensuunkatu 13  
FI-24240 SALO  
Finland

#### LEDiL Inc.

228 West Page Street  
Suite D  
Sycamore IL 60178  
USA

#### Local sales and technical support

[www.ledil.com/  
where\\_to\\_buy](http://www.ledil.com/where_to_buy)

#### Shipping locations

Salo, Finland  
Hong Kong, China

#### Distribution Partners

[www.ledil.com/  
where\\_to\\_buy](http://www.ledil.com/where_to_buy)

Компания «Life Electronics» занимается поставками электронных компонентов импортного и отечественного производства от производителей и со складов крупных дистрибьюторов Европы, Америки и Азии.

С конца 2013 года компания активно расширяет линейку поставок компонентов по направлению коаксиальный кабель, кварцевые генераторы и конденсаторы (керамические, пленочные, электролитические), за счёт заключения дистрибьюторских договоров

Мы предлагаем:

- Конкурентоспособные цены и скидки постоянным клиентам.
- Специальные условия для постоянных клиентов.
- Подбор аналогов.
- Поставку компонентов в любых объемах, удовлетворяющих вашим потребностям.
- Приемлемые сроки поставки, возможна ускоренная поставка.
- Доставку товара в любую точку России и стран СНГ.
- Комплексную поставку.
- Работу по проектам и поставку образцов.
- Формирование склада под заказчика.
- Сертификаты соответствия на поставляемую продукцию (по желанию клиента).
- Тестирование поставляемой продукции.
- Поставку компонентов, требующих военную и космическую приемку.
- Входной контроль качества.
- Наличие сертификата ISO.

В составе нашей компании организован Конструкторский отдел, призванный помогать разработчикам, и инженерам.

Конструкторский отдел помогает осуществить:

- Регистрацию проекта у производителя компонентов.
- Техническую поддержку проекта.
- Защиту от снятия компонента с производства.
- Оценку стоимости проекта по компонентам.
- Изготовление тестовой платы монтаж и пусконаладочные работы.



Тел: +7 (812) 336 43 04 (многоканальный)  
Email: [org@lifeelectronics.ru](mailto:org@lifeelectronics.ru)