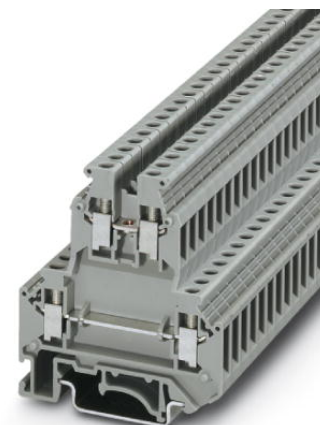


UKK 5 BU

Order No.: 2774091

The illustration shows version UKK 5 in gray

<http://eshop.phoenixcontact.de/phoenix/treeViewClick.do?UID=2774091>

Feed-through modular terminal block, Cross section: 0.2 mm² - 4 mm², AWG: 24 - 12, Connection type: Screw connection, Width: 6.2 mm, Color: blue, Mounting type: NS 35/7,5, NS 35/15, NS 32

Commercial data

| | |
|--------------------------|--------------------|
| EAN | 4017918068318 |
| Pack | 50 pcs. |
| Customs tariff | 85369010 |
| Weight/Piece | 0.01538 KG |
| Catalog page information | Page 357 (CL-2009) |

Product notes

WEEE/RoHS-compliant since:
01/01/2003



<http://www.download.phoenixcontact.com>
Please note that the data given here has been taken from the online catalog. For comprehensive information and data, please refer to the user documentation. The General Terms and Conditions of Use apply to Internet downloads.

Technical data

General

| | |
|-----------------------|------|
| Number of levels | 2 |
| Number of connections | 4 |
| Color | blue |

| | |
|------------------------------------|----|
| Insulating material | PA |
| Inflammability class acc. to UL 94 | V0 |

Dimensions

| | |
|------------------|---------|
| Width | 6.2 mm |
| Length | 56 mm |
| Height NS 35/7,5 | 62 mm |
| Height NS 35/15 | 69.5 mm |
| Height NS 32 | 67 mm |

Technical data

| | |
|----------------------------------|---------------|
| Rated surge voltage | 6 kV |
| Pollution degree | 3 |
| Surge voltage category | III |
| Insulating material group | I |
| Connection in acc. with standard | IEC 60947-7-1 |
| Nominal current I_N | 32 A |
| Nominal voltage U_N | 500 V |

Connection data

| | |
|--|----------------------|
| Conductor cross section solid min. | 0.2 mm ² |
| Conductor cross section solid max. | 4 mm ² |
| Conductor cross section stranded min. | 0.2 mm ² |
| Conductor cross section stranded max. | 4 mm ² |
| Conductor cross section AWG/kcmil min. | 24 |
| Conductor cross section AWG/kcmil max | 12 |
| Conductor cross section stranded, with ferrule without plastic sleeve min. | 0.25 mm ² |
| Conductor cross section stranded, with ferrule without plastic sleeve max. | 4 mm ² |
| Conductor cross section stranded, with ferrule with plastic sleeve min. | 0.25 mm ² |
| Conductor cross section stranded, with ferrule with plastic sleeve max. | 2.5 mm ² |
| 2 conductors with same cross section, solid min. | 0.2 mm ² |
| 2 conductors with same cross section, solid max. | 1.5 mm ² |
| 2 conductors with same cross section, stranded min. | 0.2 mm ² |

| | |
|---|----------------------|
| 2 conductors with same cross section, stranded max. | 1.5 mm ² |
| 2 conductors with same cross section, stranded, ferrules without plastic sleeve, min. | 0.25 mm ² |
| 2 conductors with same cross section, stranded, ferrules without plastic sleeve, max. | 1.5 mm ² |
| 2 conductors with same cross section, stranded, TWIN ferrules with plastic sleeve, min. | 0.5 mm ² |
| 2 conductors with same cross section, stranded, TWIN ferrules with plastic sleeve, max. | 1.5 mm ² |
| Cross-section with insertion bridge, solid max. | 4 mm ² |
| Cross-section with insertion bridge, stranded max. | 2.5 mm ² |
| Type of connection | Screw connection |
| Stripping length | 8 mm |
| Screw thread | M3 |
| Tightening torque, min | 0.6 Nm |
| Tightening torque max | 0.8 Nm |

Certificates / Approvals



Certification

CCA, CSA, CUL, DNV, GL, GOST, KEMA, UL

CSA

| | |
|-----------------------|-------|
| Nominal voltage U_N | 300 V |
| Nominal current I_N | 25 A |
| AWG/kcmil | 28-10 |

CUL

| | |
|-----------------------|-------|
| Nominal voltage U_N | 600 V |
| Nominal current I_N | 30 A |
| AWG/kcmil | 26-10 |

UL

| | |
|-----------------------|-------|
| Nominal voltage U_N | 600 V |
| Nominal current I_N | 30 A |
| AWG/kcmil | 26-10 |

| Accessories | | |
|-----------------|-------------------------------|--|
| Item | Designation | Description |
| Assembly | | |
| 2778521 | ATP-UKK 3/5 | Partition plate, Length: 64 mm, Width: 2.5 mm, Height: 67 mm, Color: gray |
| 3022218 | CLIPFIX 35 | Snap-on end bracket, for 35 mm NS 35/7.5 or NS 35/15 DIN rail, can be fitted with Zack strip ZB 8 and ZB 8/27, terminal strip marker KLM 2 and KLM, width: 9.5 mm, color: gray |
| 2770024 | D-UKK 3/5 | End cover, Length: 56 mm, Width: 2.5 mm, Height: 62 mm, Color: gray |
| 2770105 | D-UKK 3/5 BU | End cover, Length: 56 mm, Width: 2.5 mm, Height: 62 mm, Color: blue |
| 2770817 | DG-UKK 3/5 | End cover, Length: 56 mm, Width: 2.5 mm, Height: 62 mm, Color: gray |
| 2770794 | DP-UKK 3/5 | Spacer plate, Length: 56 mm, Width: 2.5 mm, Height: 66.5 mm, Color: gray |
| 1201413 | E/UK 1 | End brackets, for supporting the ends of double-level and three-level terminal blocks, width: 10 mm, color: gray |
| 0201595 | FB-150 METER | Cross connection rail, for fixed bridging of identical inputs and outputs, made of Cu, nickel-plated, 1 m long |
| 1201028 | NS 32 AL UNPERF 2000MM | G rail 32 mm (NS 32) |
| 1201280 | NS 32 CU/120QMM UNPERF 2000MM | G-profile DIN rail, deep-drawn, material: Copper, unperforated, height 15 mm, width 32 mm, length 2 m |
| 1201358 | NS 32 CU/35QMM UNPERF 2000MM | G-profile DIN rail, material: Copper, unperforated, height 15 mm, width 32 mm, length 2 m |
| 1201002 | NS 32 PERF 2000MM | G-profile DIN rail, material: Steel, perforated, height 15 mm, width 32 mm, length 2 m |
| 1201015 | NS 32 UNPERF 2000MM | G-profile DIN rail, material: Steel, unperforated, height 15 mm, width 32 mm, length 2 m |
| 0801762 | NS 35/ 7,5 CU UNPERF 2000MM | DIN rail, material: Copper, unperforated, height 7.5 mm, width 35 mm, length: 2 m |
| 0801733 | NS 35/ 7,5 PERF 2000MM | DIN rail, material: Steel, galvanized and passivated with a thick layer, perforated, height 7.5 mm, width 35 mm, length: 2 m |
| 0801681 | NS 35/ 7,5 UNPERF 2000MM | DIN rail, material: Steel, unperforated, height 7.5 mm, width 35 mm, length: 2 m |
| 1201756 | NS 35/15 AL UNPERF 2000MM | DIN rail, deep-drawn, high profile, unperforated, 1.5 mm thick, material: Aluminum, height 15 mm, width 35 mm, length 2 m |
| 1201895 | NS 35/15 CU UNPERF 2000MM | DIN rail, material: Copper, unperforated, 1.5 mm thick, height 15 mm, width 35 mm, length: 2 m |
| 1201730 | NS 35/15 PERF 2000MM | DIN rail, material: Steel, perforated, height 15 mm, width 35 mm, length: 2 m |

| | | |
|---------|----------------------------|---|
| 1201714 | NS 35/15 UNPERF 2000MM | DIN rail, material: Steel, unperforated, height 15 mm, width 35 mm, length: 2 m |
| 1201798 | NS 35/15-2,3 UNPERF 2000MM | DIN rail, material: Steel, unperforated, 2.3 mm thick, height 15 mm, width 35 mm, length: 2 m |
| 2770215 | TS-KK 3 | Separating plate, Color: gray |

Bridges

| | | |
|---------|-------------|---|
| 0201155 | EB 2- 6 | Cross connector/bridge, Number of positions: 2, Color: gray |
| 0201142 | EB 3- 6 | Cross connector/bridge, Number of positions: 3, Color: gray |
| 0201139 | EB 10- 6 | Cross connector/bridge, Number of positions: 10, Color: gray |
| 0203250 | FBI 10- 6 | Cross connector/bridge, Number of positions: 10, Color: silver |
| 0201650 | FBI 100- 6 | Cross connector/bridge, Number of positions: 100, Color: aluminum |
| 0201867 | FBI 20- 6 | Cross connector/bridge, Number of positions: 20, Color: aluminum |
| 1302338 | IS-K 4 | Bridge bar isolator, Color: gray |
| 0301505 | ISSBI 10- 6 | Switching jumper, Number of positions: 10, Color: silver |
| 0202280 | LB 10-6 BU | Cross connector/bridge, Number of positions: 10, Color: blue |
| 0202358 | LB 10-6 GY | Cross connector/bridge, Number of positions: 10, Color: gray |
| 0202293 | LB 10-6 RD | Cross connector/bridge, Number of positions: 10, Color: red |
| 0202303 | LB 100-6 BU | Cross connector/bridge, Number of positions: 100, Color: blue |
| 0202345 | LB 100-6 GY | Cross connector/bridge, Number of positions: 100, Color: gray |
| 0202316 | LB 100-6 RD | Cross connector/bridge, Number of positions: 100, Color: red |
| 1413230 | SBRN 2-7 | Cross connector/bridge, Color: silver |
| 2303239 | USBR 2-7 | Cross connector/bridge, Color: silver |
| 2305538 | USBRJ 2-7 | Cross connector/bridge, Number of positions: 2, Color: silver |

Marking

| | | |
|---------|------------------|---|
| 1007222 | SBS 6:UNBEDRUCKT | Marker cards for modular terminal blocks, color: white |
| 1004115 | WS 3- 6 | Warning plate, with 2 plastic screws, across 3 terminal blocks, pitch 6 mm |
| 1004209 | WS 4- 6 | Warning plate, with 2 plastic screws, across 4 terminal blocks, pitch 6 mm |
| 1004403 | WS 5- 6 | Warning plate, with 2 plastic screws, across 5 terminal blocks, pitch 6 mm |
| 1050499 | ZB 6:SO/CMS | Zack strip, 10-section, divisible, special printing, marking according to customer requirements |

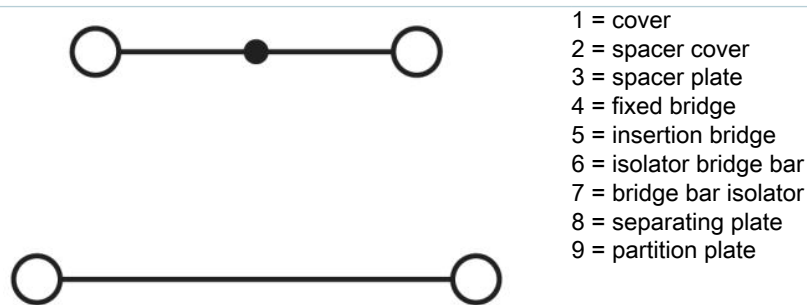
Plug/Adapter

| | | |
|---------|----------|---|
| 0309523 | KSS 3- 6 | Short circuit connector, Number of positions: 3, Color: black |
|---------|----------|---|

| | | |
|---------|-------------|---|
| 0301547 | KSS 6 | Short circuit connector, Number of positions: 2, Color: black |
| 3000625 | PS-UKK 5 | Test plugs, Color: red |
| 3000641 | PS-UKK/E | Test plugs, Color: red |
| 0601292 | PSB 3/10/4 | Female test connector, Color: silver |
| 0201304 | PSBJ 3/13/4 | Female test connector, Color: silver |
| 0201647 | RPS | Reducing plug, Color: gray |

Diagrams/Drawings

Circuit diagram



Address

PHOENIX CONTACT Deutschland GmbH
Flachmarktstr. 8
32825 Blomberg, Germany
Phone +49 5235 3 12000
Fax +49 5235 3 41200
<http://www.phoenixcontact.de>



© 2010 Phoenix Contact
Technical modifications reserved;

Компания «Life Electronics» занимается поставками электронных компонентов импортного и отечественного производства от производителей и со складов крупных дистрибьюторов Европы, Америки и Азии.

С конца 2013 года компания активно расширяет линейку поставок компонентов по направлению коаксиальный кабель, кварцевые генераторы и конденсаторы (керамические, пленочные, электролитические), за счёт заключения дистрибьюторских договоров

Мы предлагаем:

- Конкурентоспособные цены и скидки постоянным клиентам.
- Специальные условия для постоянных клиентов.
- Подбор аналогов.
- Поставку компонентов в любых объемах, удовлетворяющих вашим потребностям.
- Приемлемые сроки поставки, возможна ускоренная поставка.
- Доставку товара в любую точку России и стран СНГ.
- Комплексную поставку.
- Работу по проектам и поставку образцов.
- Формирование склада под заказчика.
- Сертификаты соответствия на поставляемую продукцию (по желанию клиента).
- Тестирование поставляемой продукции.
- Поставку компонентов, требующих военную и космическую приемку.
- Входной контроль качества.
- Наличие сертификата ISO.

В составе нашей компании организован Конструкторский отдел, призванный помогать разработчикам, и инженерам.

Конструкторский отдел помогает осуществить:

- Регистрацию проекта у производителя компонентов.
- Техническую поддержку проекта.
- Защиту от снятия компонента с производства.
- Оценку стоимости проекта по компонентам.
- Изготовление тестовой платы монтаж и пусконаладочные работы.



Тел: +7 (812) 336 43 04 (многоканальный)
Email: org@lifeelectronics.ru