

<b>NEW PRODUCT</b> EC NO: SH2010-0088 DRW:KWEI 2009/09/14 CHKD:RZHANG 2009/09/14 APPR:XJ.SONG 2009/09/14 REV B	QUALITY SYMBOLS ▽=0 ◻=0	GENERAL TOLERANCES (UNLESS SPECIFIED) mm INCH 4 PLACES ± --- ± --- 3 PLACES ± --- ± --- 2 PLACES ± 0.25 ± --- 1 PLACE ± 0.30 ± --- ANGULAR ± -- °	DIMENSION STYLE MM ONLY DRAWN BY: KLAUS WEI CHECKED BY: ROST ZHANG APPROVED BY: HARVEY WANG MATERIAL NO.	DATE: 2008/03/31 DATE: 2008/03/31 DATE: 2008/03/31	SCALE: 5:1 DESIGN UNITS: METRIC THIRD ANGLE PROJECTION	TITLE: MINI DISPLAY PORT PLUG MOLEX INCORPORATED DOCUMENT NO. SD-105061-200 SHEET NO. 1 OF 7	
	DRAFT WHERE APPLICABLE MUST REMAIN WITHIN DIMENSIONS		SEE SHEET 2	THIS DRAWING CONTAINS INFORMATION THAT IS PROPRIETARY TO MOLEX INCORPORATED AND SHOULD NOT BE USED WITHOUT WRITTEN PERMISSION			

TOP ROW			BOTTOM ROW		
PIN NUMBER	SIGNAL TYPE	PIN NAME	PIN NUMBER	SIGNAL TYPE	PIN NAME
1	GND	GND	2	IN	HOT PLUG DETECT
3	OUT	ML_LANE 0(p)	4	CONFIG	CONFIG 1
5	OUT	ML_LANE 0(n)	6	CONFIG	CONFIG 2
7	GND	GND	8	GND	GND
9	OUT	ML_LANE 1(p)	10	OUT	ML_LANE 3(p)
11	OUT	ML_LANE 1(n)	12	OUT	ML_LANE 3(n)
13	GND	GND	14	GND	GND
15	OUT	ML_LANE 2(p)	16	I/O	AUX_CH(p)
17	OUT	ML_LANE 2(n)	18	I/O	AUX_CH(n)
19	RTN	RETURN	20	POWER OUT	DP_PWR

ITEM	PART NAME	PART NUMBER	QTY'S
1	SUB-ASSEMBLY	WHITE	105061-2200
		BLACK	105061-2100
2	MAIN-SHELL	105061-0005	1
3	BOTTOM SHELL	105061-0006	1
4	TOP-SHELL	105061-0007	1

NOTES:

1. MATERIAL:

- 1.1. PLASTIC: HIGH TEMPERATURE THERMOPLASTICS.
- 1.2. TERMINAL: PHOSPHOR BRONZE.
- 1.3. SHIELD SHELL: COPPER ALLOY.
- 1.4. OTHER SHELL: COPPER ALLOY.

2. PLATING:

2.1. TERMINAL:

- 2.1.1. UNDERPLATING: NICKEL 1.30 MICROMETER MIN.
- 2.1.2. CONTACT AREA: GOLD 0.76 MICROMETER MIN.
- 2.1.3. SOLDER AREA: GOLD FLASH.

2.2. METAL SHELL: NICKEL 1.30 MICROMETER MIN.

3. MECHANICAL PROPERTIES:

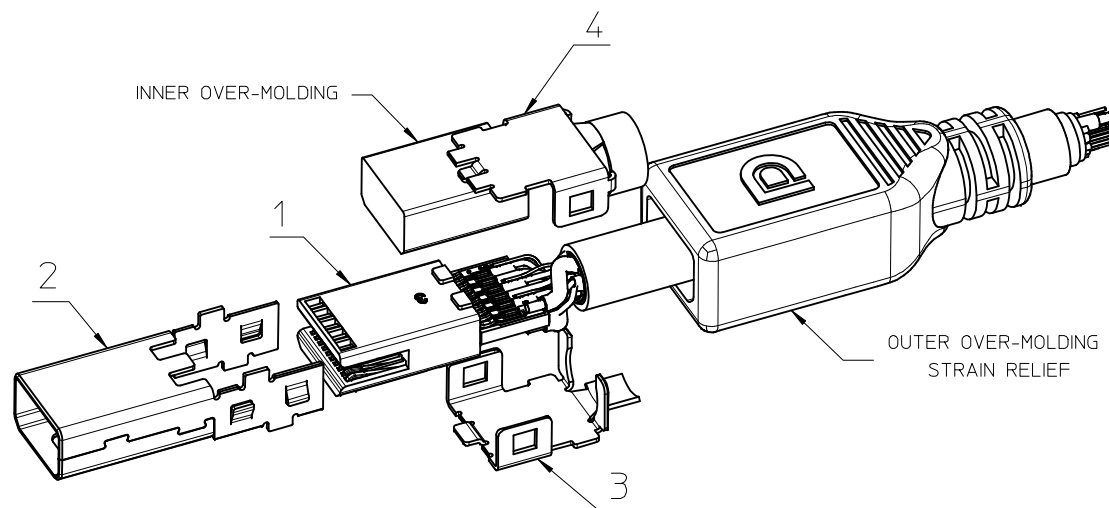
- 3.1. TERMINAL RETENTION FORCE: 0.5 Kgf MIN.
- 3.2. MATING FORCE: 4.0 Kgf MAX.
- 3.3. NORMAL FORCE: 25gf MIN.
- 3.4. DURABILITY: 1500 CYCLES.

4. ELECTRICAL PROPERTIES:

- 4.1. APPLIED VOLTAGE RATING: 30V AC (RMS)
- 4.2. CONTACT CURRENT RATING: 0.5 Amp
- 4.3. DIELECTRIC WITHSTANDING: 200V AC MIN.
- 4.4. INSULATION RESISTANCE: 100 Megaohm MIN.

5. ENVIRONMENTAL PROPERTIES:

- 5.1. OPERATING TEMPERATURE: -20°C TO 85°C.
  - 5.2. BE APPLICABLE TO HANDWORK SOLDER & IR-REFLOW PROCESS
6. THIS PRODUCT COMPLIANT TO RoHS DIRECTIVE 2002/95/EC, AND ELV DIRECTIVE 2000/53/EC.

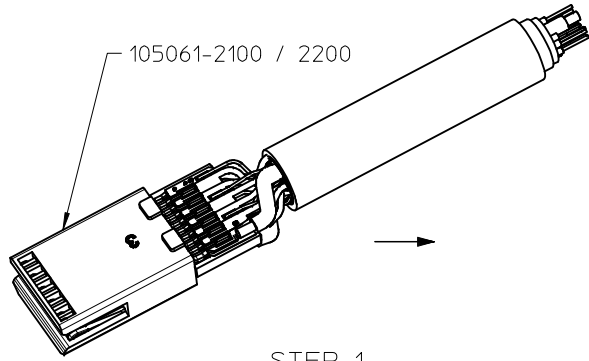


NOTES:

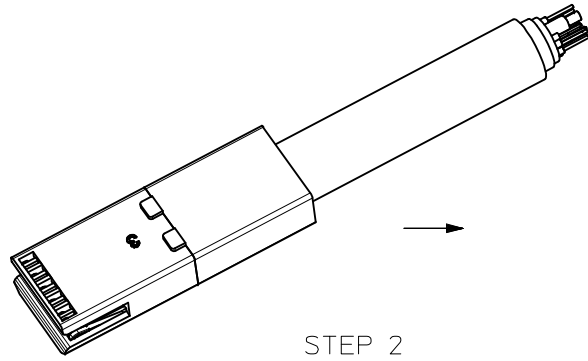
OVER-MOLDING ONLY FOR REFERENCE

<b>NEW PRODUCT</b> EC NO: SH2010-0088 DRW:KWEI 2009/09/14 CHK:RZHANG 2009/09/14 APPR:XJ.SONG 2009/09/21	DESCRIPTION REV	QUALITY SYMBOLS	GENERAL TOLERANCES (UNLESS SPECIFIED)	DIMENSION STYLE	SCALE	DESIGN UNITS	THIRD ANGLE PROJECTION
		$\nabla=0$ $\square=0$	mm    INCH	MM ONLY	N/A	METRIC	
			4 PLACES ± --- ± ---	DRAWN BY    DATE	TITLE		
			3 PLACES ± --- ± ---	KLAUS WEI    2008/03/31	MINI DISPLAY PORT PLUG		
	2 PLACES ± --- ± ---	CHECKED BY    DATE	MOLEX INCORPORATED				
	1 PLACE ± --- ± ---	ROST ZHANG    2008/03/31	DOCUMENT NO.				
	ANGULAR ± ---°	APPROVED BY    DATE	SHEET NO.				
		HARVEY WANG    2008/03/31	SD-105061-200				
		MATERIAL NO.	2 OF 7				
		DRAFT WHERE APPLICABLE MUST REMAIN WITHIN DIMENSIONS	THIS DRAWING CONTAINS INFORMATION THAT IS PROPRIETARY TO MOLEX INCORPORATED AND SHOULD NOT BE USED WITHOUT WRITTEN PERMISSION				

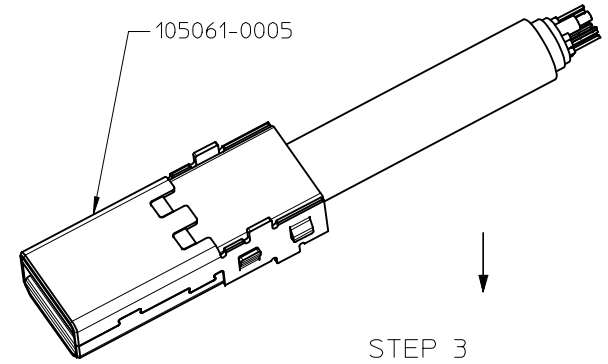
# ASSEMBLY PROCEDURE



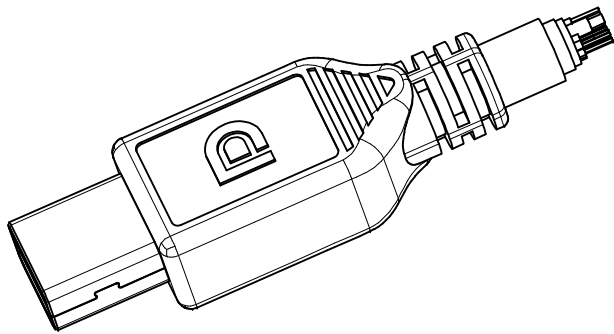
STEP 1  
SOLDER WIRE



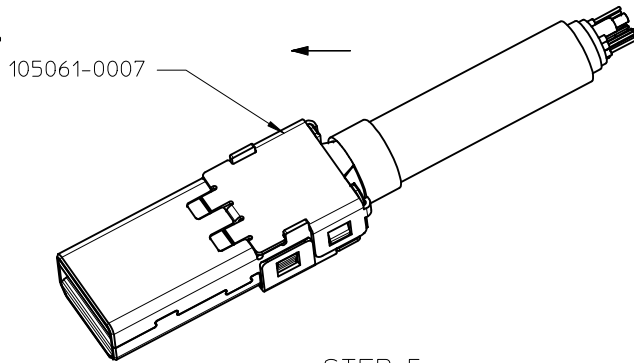
STEP 2  
INNER OVER-MOLDING



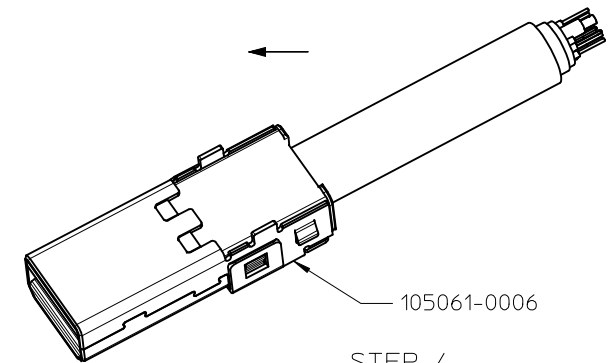
STEP 3  
ASSEMBLE MAIN SHELL



STEP 6  
OUTER OVER-MOLDING

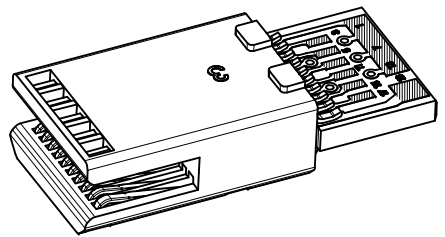
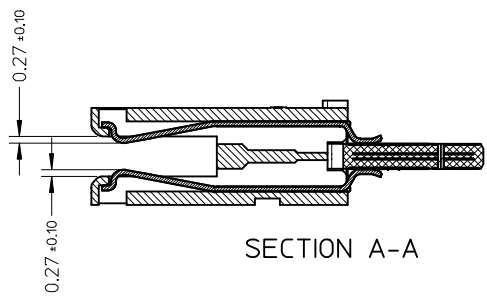
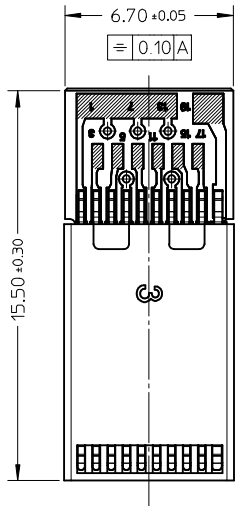


STEP 5  
ASSEMBLE TOP SHELL AND CRIMPING

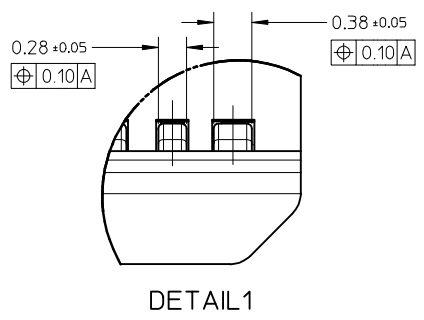
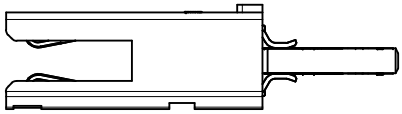
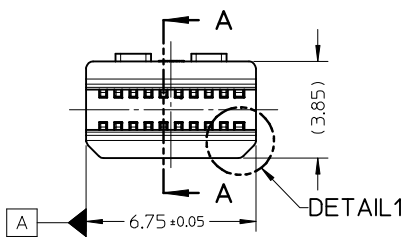


STEP 4  
ASSEMBLE BOTTOM SHELL

<b>NEW PRODUCT</b> IEC NO: SH2010-0088 DRW:KWCWEI 2009/09/14 CH:KDRZHANG 2009/09/14 APPR:XJ.SONG 2009/09/21 B	QUALITY SYMBOLS ▽=0 ◻=0	GENERAL TOLERANCES (UNLESS SPECIFIED)		DIMENSION STYLE <b>MM ONLY</b>	SCALE N/A	DESIGN UNITS METRIC	THIRD ANGLE PROJECTION	
		4 PLACES ±--- ±--- 3 PLACES ±--- ±--- 2 PLACES ±--- ±--- 1 PLACE ±--- ±---	mm INCH ±--- ±--- ±--- ±--- ±--- ±--- ±--- ±---	DRAWN BY DATE KLAUS WEI 2008/03/31	TITLE <b>MINI DISPLAY PORT PLUG</b>			
		ANGULAR ±---°	DRAFT WHERE APPLICABLE MUST REMAIN WITHIN DIMENSIONS	CHECKED BY DATE ROST ZHANG 2008/03/31	APPROVED BY DATE HARVEY WANG 2008/03/31	MOLEX MOLEX INCORPORATED		
			SEE ABOVE	MATERIAL NO. SEE ABOVE	DOCUMENT NO. SD-105061-200	SHEET NO. 3 OF 7		



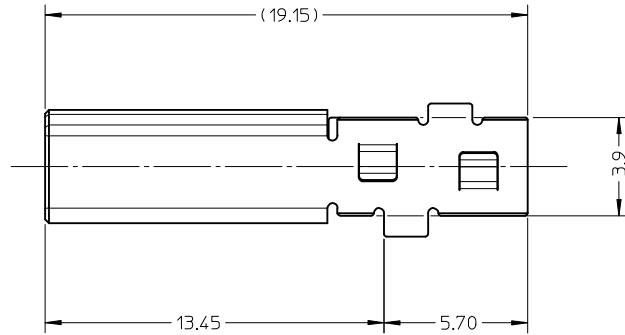
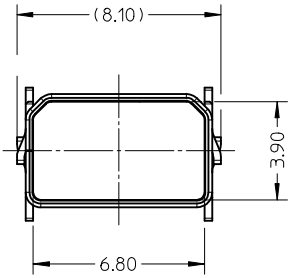
- NOTES:
1. MATERIAL:  
 PLASTIC: LCP ,UL94V-0 .  
 METAL: COPPER OR COPPER ALLOY.
  2. PACKAGING SPECIFICATION : PK-105061-001.
  3. PRODUCT SPECIFICATION: PS-105061-001.



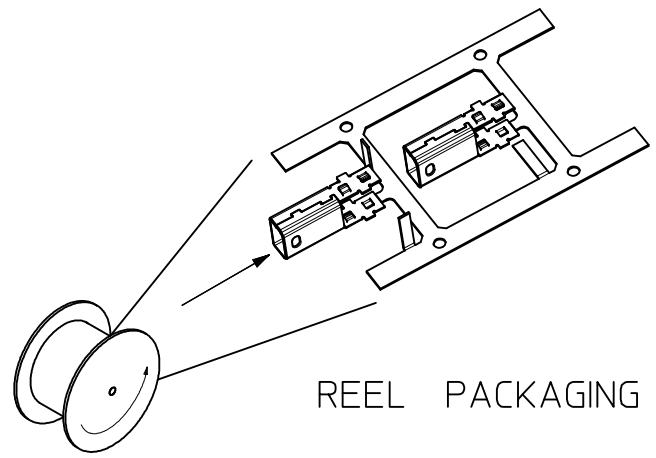
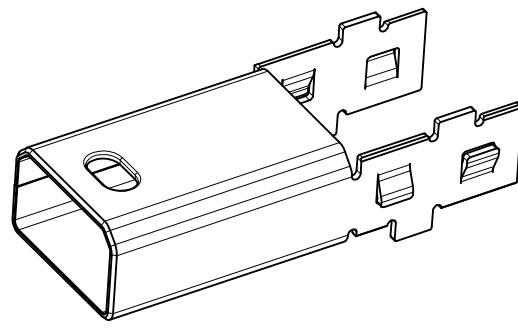
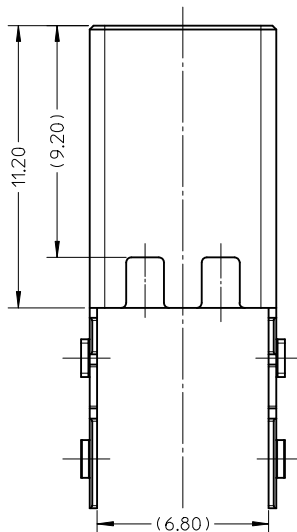
105061-2200	LCP	WHITE
105061-2100	LCP	BLACK
PART NUMBER	RESIN TYPE	COLOR

NEW PRODUCT EC NO: SH2010-0088 DRW:KWEI CH:KDRZHANG APPR:XJ.SONG	2009/09/14 2009/09/14 2009/09/21	DESCRIPTION REV	QUALITY SYMBOLS ▽=0 ◻=0	GENERAL TOLERANCES (UNLESS SPECIFIED)		DIMENSION STYLE		SCALE	DESIGN UNITS	THIRD ANGLE PROJECTION	
						MM ONLY		5:1	METRIC		
				4 PLACES	± ---	± ---	DRAWN BY	DATE	TITLE		
				3 PLACES	± ---	± ---	KLAUS WEI	2008/03/31	SUB-ASSEMBLY		
2 PLACES	± 0.10	± ---	CHECKED BY	DATE							
1 PLACE	± 0.15	± ---	ROST ZHANG	2008/03/31							
ANGULAR ± ---°				APPROVED BY	DATE						
DRAFT WHERE APPLICABLE MUST REMAIN WITHIN DIMENSIONS				HARVEY WANG	2008/03/31						
				105061-2*00		MOLEX INCORPORATED		DOCUMENT NO.	SHEET NO.		
				SIZE A3		105061-2*00		SD-105061-200		4 OF 7	
				THIS DRAWING CONTAINS INFORMATION THAT IS PROPRIETARY TO MOLEX INCORPORATED AND SHOULD NOT BE USED WITHOUT WRITTEN PERMISSION							

10 9 8 7 6 5 4 3 2 1



- NOTES:
1. MATERIALS: COPPER ALLOY  
THICKNESS: 0.30±0.01mm..
  2. FINISH: NICKEL 1.30 MICROMETRE MIN.
  3. COMPLIANT TO RoHS DIRECTIVE 2002/95/EC AND ELV DIRECTIVE 2000/53/EC.
  4. PACKAGING QUANTITIES : 800 PCS PER REEL.

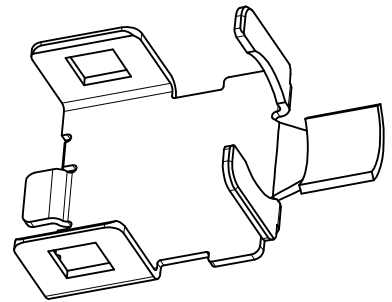
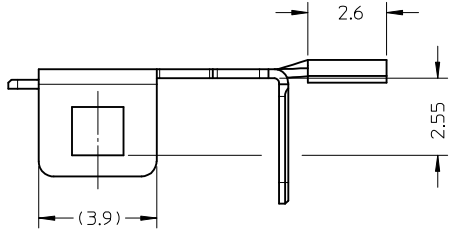


REEL PACKAGING

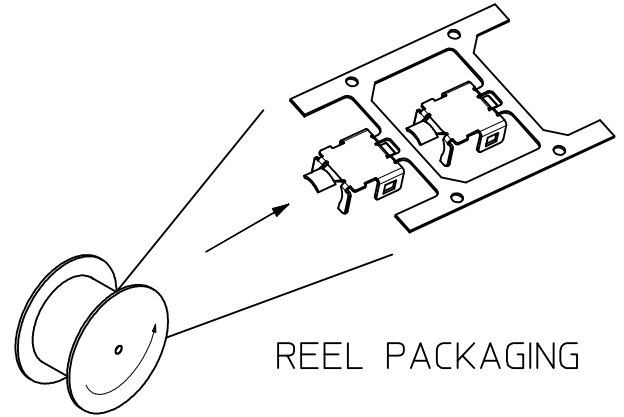
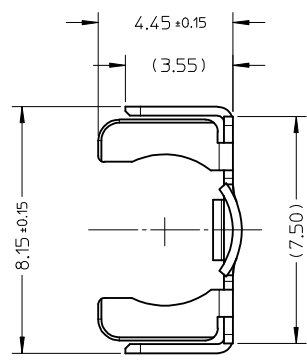
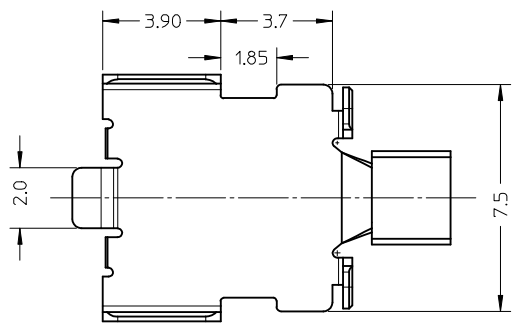
<b>NEW PRODUCT</b> EC NO: SH2010-0088 DRW:KWEI 2009/09/14 CHKD:RZHANG 2009/09/14 APPR:XJ.SONG 2009/09/14	QUALITY SYMBOLS ▽=0 ◻=0	GENERAL TOLERANCES (UNLESS SPECIFIED)		DIMENSION STYLE <b>MM ONLY</b>		SCALE <b>5:1</b>	DESIGN UNITS <b>METRIC</b>	THIRD ANGLE PROJECTION	
			mm	INCH	DRAWN BY	DATE	TITLE		
		4 PLACES	±---	±---	KLAUS WEI	2008/03/31	<b>MAIN SHELL</b>		
		3 PLACES	±---	±---	CHECKED BY	DATE			
2 PLACES	±0.10	±---	ROST ZHANG	2008/03/31	MOLEX INCORPORATED				
1 PLACE	±0.15	±---	APPROVED BY	DATE					
	ANGULAR ±---°		HARVEY WANG	2008/03/31	MATERIAL NO. <b>105061-0005</b>		DOCUMENT NO. <b>SD-105061-200</b>	SHEET NO. <b>5 OF 7</b>	
DRAFT WHERE APPLICABLE MUST REMAIN WITHIN DIMENSIONS				SIZE <b>A3</b>	THIS DRAWING CONTAINS INFORMATION THAT IS PROPRIETARY TO MOLEX INCORPORATED AND SHOULD NOT BE USED WITHOUT WRITTEN PERMISSION				

9 8 7 6 5 4 3 2 1

10 9 8 7 6 5 4 3 2 1



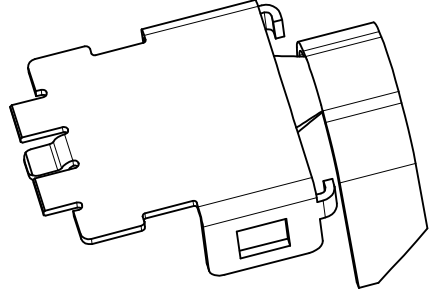
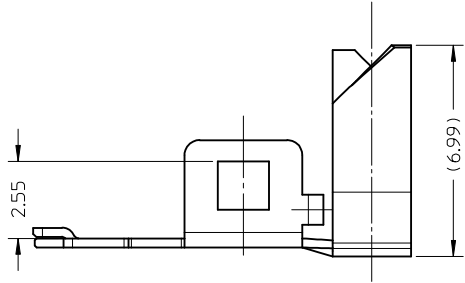
- NOTES:
1. MATERIALS: COPPER ALLOY.  
THICKNESS: 0.30±0.01mm.
  2. FINISH: NICKEL 1.30 MICROMETRE MIN.
  3. COMPLIANT TO RoHS DIRECTIVE 2002/95/EC AND ELV DIRECTIVE 2000/53/EC.
  4. PACKAGING QUANTITIES : 1500 PCS PER REEL.



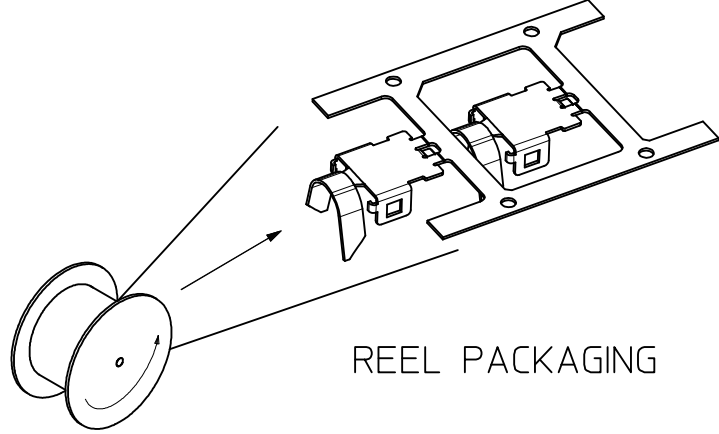
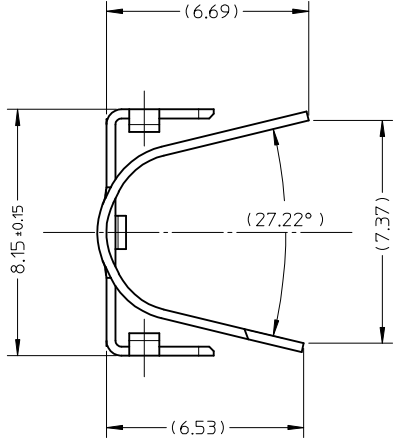
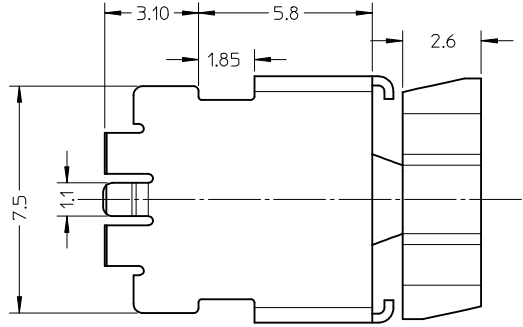
REEL PACKAGING

<b>NEW PRODUCT</b> EC NO: SH2010-0088 DRW:KWEI 2009/09/14 CHK:RZHANG 2009/09/14 APPR:XJSONG 2009/09/21	QUALITY SYMBOLS ▽=0 ◻=0	GENERAL TOLERANCES (UNLESS SPECIFIED)		DIMENSION STYLE <b>MM ONLY</b>	SCALE <b>5:1</b>	DESIGN UNITS <b>METRIC</b>	THIRD ANGLE PROJECTION		
		4 PLACES ± --- ± ---	3 PLACES ± --- ± ---	2 PLACES ± 0.10 ± ---	1 PLACE ± 0.15 ± ---	ANGULAR ± ---°	DRAWN BY: KLAUS WEI DATE: 2008/03/31 CHECKED BY: ROST ZHANG DATE: 2008/03/31 APPROVED BY: HARVEY WANG DATE: 2008/03/31		
		DRAFT WHERE APPLICABLE MUST REMAIN WITHIN DIMENSIONS					TITLE: <b>BOTTOM SHELL</b>		
		MATERIAL NO. <b>105061-0006</b>					DOCUMENT NO. <b>SD-105061-200</b>		SHEET NO. <b>6 OF 7</b>

9 8 7 6 5 4 3 2 1



- NOTES:
1. MATERIALS: COPPER ALLOY.  
THICKNESS: 0.30±0.01mm.
  2. FINISH: NICKEL 1.30 MICROMETRE MIN.
  3. COMPLIANT TO RoHS DIRECTIVE 2002/95/EC AND ELV DIRECTIVE 2000/53/EC.
  4. PACKAGING QUANTITIES : 1500 PCS PER REEL.



REEL PACKAGING

NEW PRODUCT EC NO: SH2010-0088 DRW:KWEI 2009/09/14 CHKD:RZHANG 2009/09/14 APPR:XJ.SONG 2009/09/21	DESCRIPTION REV	QUALITY SYMBOLS	GENERAL TOLERANCES (UNLESS SPECIFIED)	DIMENSION STYLE	SCALE	DESIGN UNITS	THIRD ANGLE PROJECTION	
		▽=0 Ⓢ=0	mm    INCH 4 PLACES ± --- ± --- 3 PLACES ± --- ± --- 2 PLACES ± 0.10 ± --- 1 PLACE ± 0.15 ± --- ANGULAR ± ---°	MM ONLY	5:1	METRIC		
			DRAFT WHERE APPLICABLE MUST REMAIN WITHIN DIMENSIONS	DRAWN BY: KLAUS WEI CHECKED BY: ROST ZHANG APPROVED BY: HARVEY WANG MATERIAL NO.: 105061-0007	DATE: 2008/03/31 DATE: 2008/03/31 DATE: 2008/03/31	TITLE: TOP SHELL		
				SIZE: A3 THIS DRAWING CONTAINS INFORMATION THAT IS PROPRIETARY TO MOLEX INCORPORATED AND SHOULD NOT BE USED WITHOUT WRITTEN PERMISSION	MOLEX INCORPORATED DOCUMENT NO.: SD-105061-200		SHEET NO.: 7 OF 7	

Компания «Life Electronics» занимается поставками электронных компонентов импортного и отечественного производства от производителей и со складов крупных дистрибьюторов Европы, Америки и Азии.

С конца 2013 года компания активно расширяет линейку поставок компонентов по направлению коаксиальный кабель, кварцевые генераторы и конденсаторы (керамические, пленочные, электролитические), за счёт заключения дистрибьюторских договоров

Мы предлагаем:

- Конкурентоспособные цены и скидки постоянным клиентам.
- Специальные условия для постоянных клиентов.
- Подбор аналогов.
- Поставку компонентов в любых объемах, удовлетворяющих вашим потребностям.
- Приемлемые сроки поставки, возможна ускоренная поставка.
- Доставку товара в любую точку России и стран СНГ.
- Комплексную поставку.
- Работу по проектам и поставку образцов.
- Формирование склада под заказчика.
- Сертификаты соответствия на поставляемую продукцию (по желанию клиента).
- Тестирование поставляемой продукции.
- Поставку компонентов, требующих военную и космическую приемку.
- Входной контроль качества.
- Наличие сертификата ISO.

В составе нашей компании организован Конструкторский отдел, призванный помогать разработчикам, и инженерам.

Конструкторский отдел помогает осуществить:

- Регистрацию проекта у производителя компонентов.
- Техническую поддержку проекта.
- Защиту от снятия компонента с производства.
- Оценку стоимости проекта по компонентам.
- Изготовление тестовой платы монтаж и пусконаладочные работы.



Тел: +7 (812) 336 43 04 (многоканальный)

Email: [org@lifeelectronics.ru](mailto:org@lifeelectronics.ru)