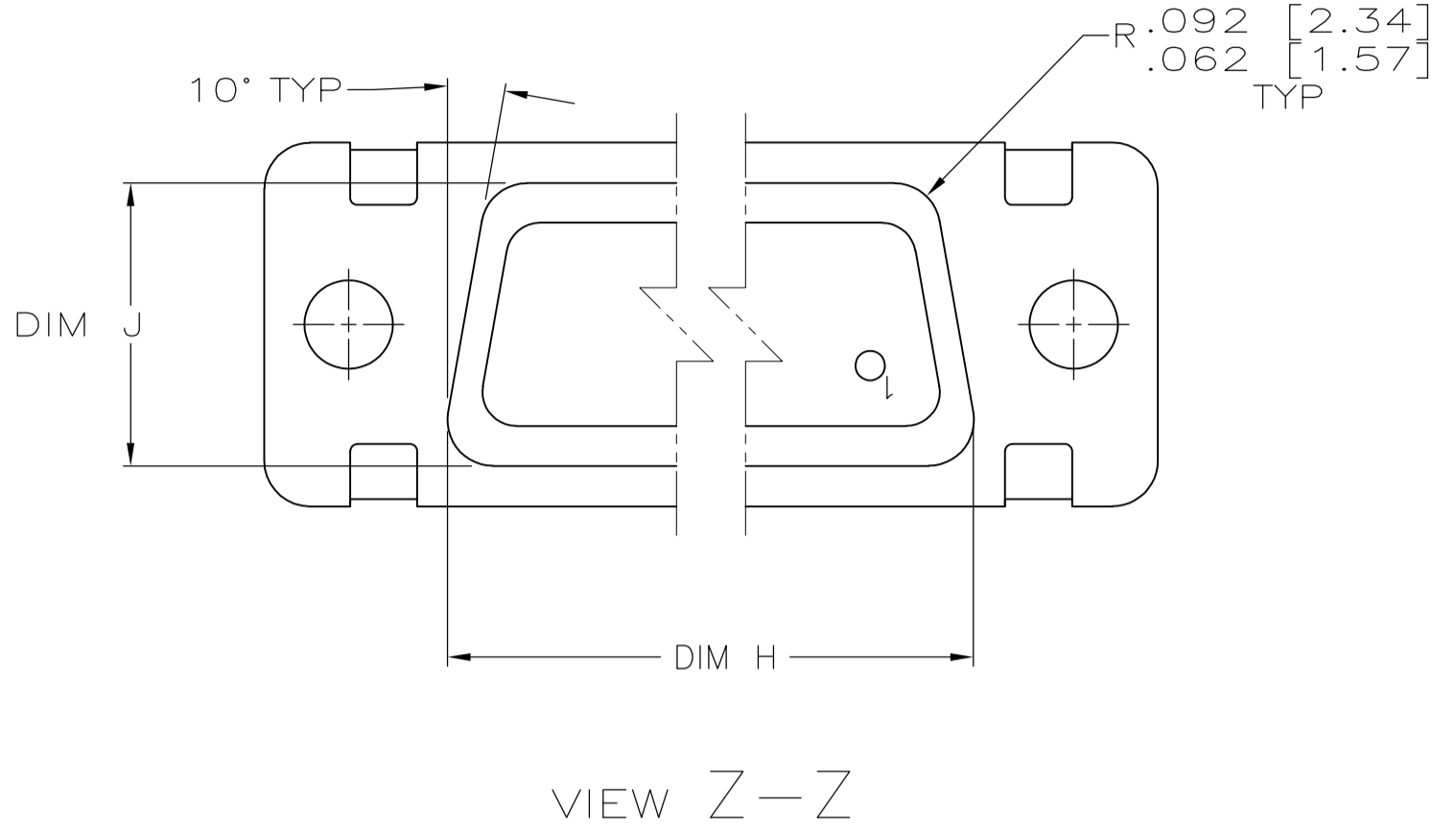
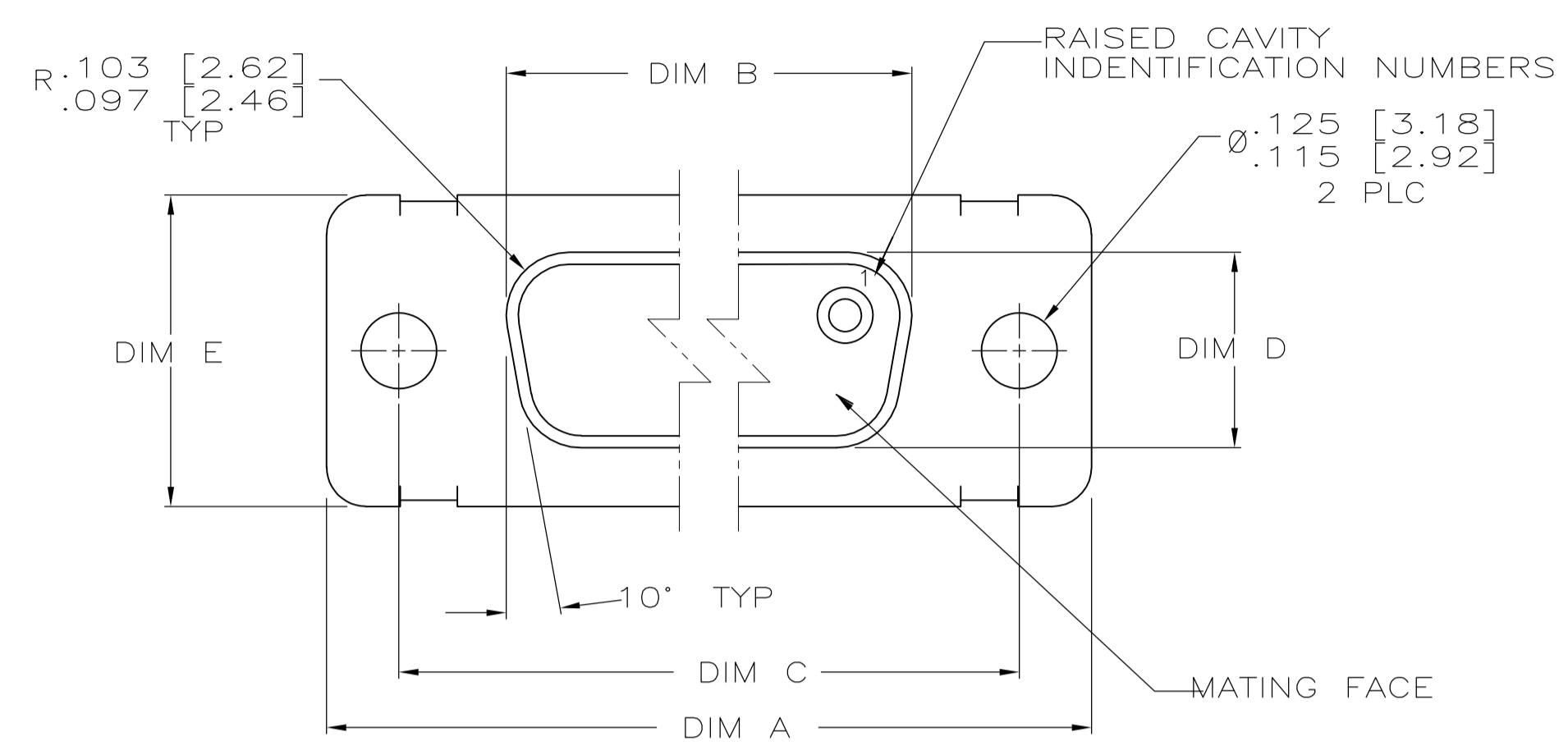
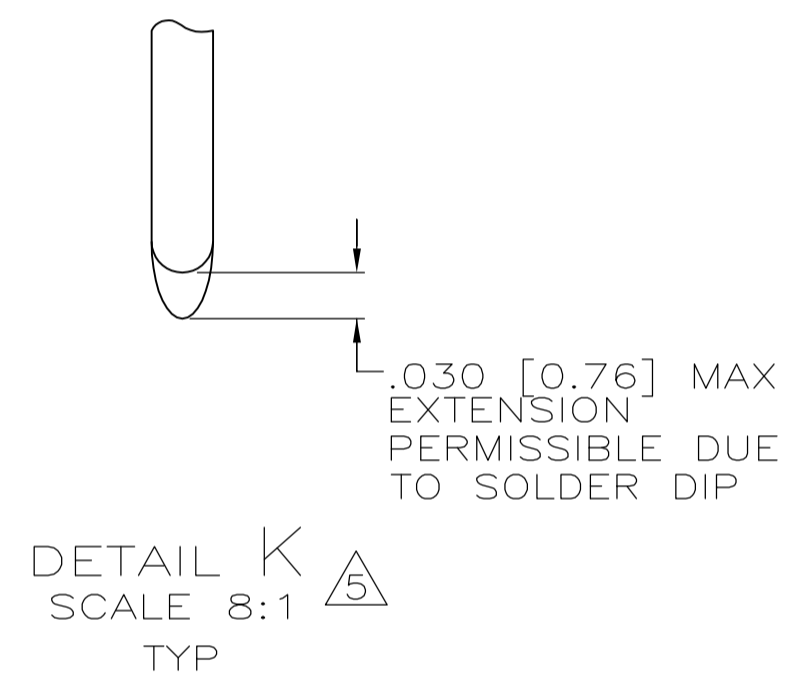
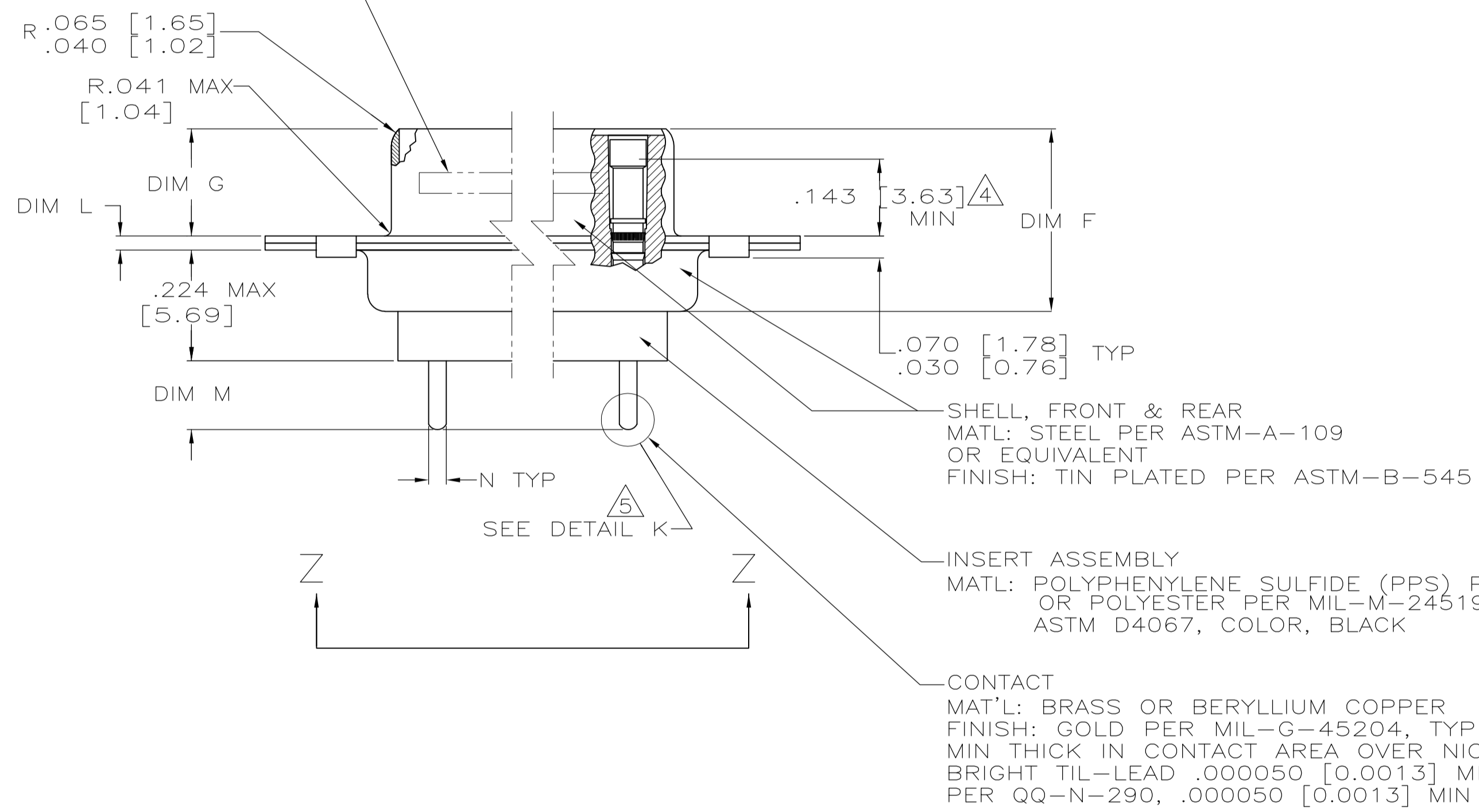


LOC		DIST		REVISIONS			
P	LTR	DESCRIPTION	DATE	DN	APVD		
C		REVISED PER ECO-09-008889	24-03-09	CT	RL		

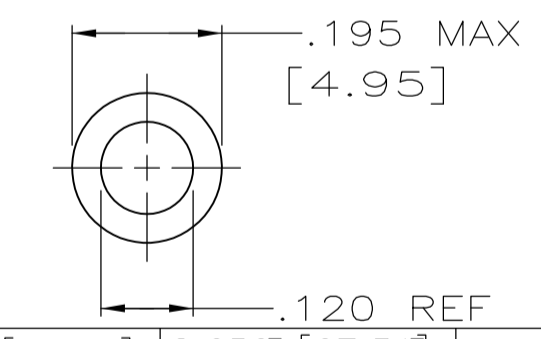
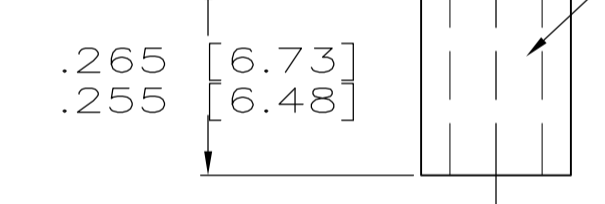


- 1. SEE SHEET 2 FOR RECOMMENDED P.C. BOARD LAYOUT. TRUE POSITION TOLERANCE FOR P.C. BOARD LAYOUT IS .010 [0.25] AT MAX MATERIAL CONDITION. SUGGESTED BOARD THICKNESS IS .125 [3.18]
- 2. THE CONNECTORS DESCRIBED IN THIS DOCUMENT WILL MATE WITH ANY PLUG CONNECTOR WITH THE SAME INSERT ARRANGEMENT.
- 3. MARKED WITH .047 [1.19]-.062 [1.57] HIGH CHARACTERS. FAR SIDE REFERS TO THE WIDE SIDE OF THE KEYSTONE. NEAR SIDE REFERS TO THE NARROW SIDE OF THE KEYSTONE. IF THE FRONT SHELL IS TOO SMALL FOR "TE", TE PART NUMBER AND DATE CODE, THEN SPLIT AS FOLLOWS:
 - A. TE PART NUMBER ON REAR SHELL, NEAR SIDE.
 - B. "TE" AND DATE CODE ON FRONT SHELL, NEAR SIDE.
- 4. POINT OF ELECTRICAL ENGAGEMENT - AS MEASURED WITH A .0390 [0.991]-.0393 [0.998] DIA SQUARE ENDED TEST PIN.
- 5. SOLDER DIPPED PER MIL-STD-2000 COMPOSITION Sn63 CONFORMING TO QQ-S-571. COVERAGE SHALL BE COMPLETE TO A DISTANCE .020 [0.51] MAX FROM INSERT ASSEMBLY.
- 6. SPACERS (QTY 2) ARE SUPPLIED WITH CONNECTORS (NOT ATTACHED TO THE CONNECTOR).
- 7. DIMENSIONS APPLY PRIOR TO SOLDER DIPPING.

3 MARK TE, TE PART NO AND DATE CODE, FAR SIDE.



6 SPACER MAT'L: ALUMINUM ALLOY PER ASTM-B-211 FINISH: IRIDITE PER MIL-C-5541, CLASS 3, COLOR GOLD



N	M	L	J	H	G	F	E	D	C	B	A	ARRANGEMENT	NO OF POS	SHELL SIZE	TE PN ON CONNECTOR	PART NUMBER
.033 [0.84] [0.69]	.176 [4.47] [3.45]	.040 [1.02] [0.51]	.544 [13.82] [13.31]	2.188 [55.58] [55.07]	.248 [6.30] [6.05]	.439 [11.15] [10.64]	.620 [15.75] [14.99]	.428 [10.87] [10.62]	2.411 [61.24] [60.99]	2.069 [52.55] [52.30]	2.650 [67.51] [66.55]	MS18277-1	50	5	1218293-5	1-1218293-0
.033 [0.84] [0.69]	.176 [4.47] [3.45]	.040 [1.02] [0.51]	.432 [10.97] [10.46]	2.282 [57.96] [57.45]	.248 [6.30] [6.05]	.439 [11.15] [10.64]	.509 [12.93] [12.17]	.316 [8.03] [7.77]	2.505 [63.63] [63.37]	2.164 [54.97] [54.71]	2.744 [69.70] [68.94]	MS18276-1	37	4	1218293-4	1218293-9
.033 [0.84] [0.69]	.176 [4.47] [3.45]	.040 [1.02] [0.51]	.432 [10.97] [10.46]	1.635 [41.53] [41.02]	.248 [6.30] [6.05]	.439 [11.15] [10.64]	.509 [12.93] [12.17]	.316 [8.03] [7.77]	1.857 [47.17] [46.91]	1.516 [38.51] [38.25]	2.103 [53.42] [52.65]	MS18275-1	25	3	1218293-3	1218293-8
.033 [0.84] [0.69]	.176 [4.47] [3.45]	.040 [1.02] [0.51]	.432 [10.97] [10.46]	1.093 [27.76] [27.25]	.248 [6.30] [6.05]	.439 [11.15] [10.64]	.509 [12.93] [12.17]	.316 [8.03] [7.77]	1.317 [33.45] [33.20]	.976 [24.79] [24.54]	1.556 [39.52] [38.76]	MS18274-1	15	2	1218293-2	1218293-7
.033 [0.84] [0.69]	.176 [4.47] [3.45]	.040 [1.02] [0.51]	.432 [10.97] [10.46]	.769 [19.53] [19.02]	.248 [6.30] [6.05]	.439 [11.15] [10.64]	.509 [12.93] [12.17]	.316 [8.03] [7.77]	.989 [25.12] [24.87]	.648 [16.46] [16.21]	1.228 [31.19] [30.43]	MS18273-1	9	1	1218293-1	1218293-6
.033 [0.84] [0.69]	.176 [4.47] [3.45]	.040 [1.02] [0.51]	.544 [13.82] [13.31]	2.188 [55.58] [55.07]	.248 [6.30] [6.05]	.439 [11.15] [10.64]	.620 [15.75] [14.99]	.428 [10.87] [10.62]	2.411 [61.24] [60.99]	2.069 [52.55] [52.30]	2.650 [67.51] [66.55]	MS18277-1	50	5	1218293-5	1218293-5
.033 [0.84] [0.69]	.176 [4.47] [3.45]	.040 [1.02] [0.51]	.432 [10.97] [10.46]	2.282 [57.96] [57.45]	.248 [6.30] [6.05]	.439 [11.15] [10.64]	.509 [12.93] [12.17]	.316 [8.03] [7.77]	2.505 [63.63] [63.37]	2.164 [54.97] [54.71]	2.744 [69.70] [68.94]	MS18276-1	37	4	1218293-4	1218293-4
.033 [0.84] [0.69]	.176 [4.47] [3.45]	.040 [1.02] [0.51]	.432 [10.97] [10.46]	1.635 [41.53] [41.02]	.248 [6.30] [6.05]	.439 [11.15] [10.64]	.509 [12.93] [12.17]	.316 [8.03] [7.77]	1.857 [47.17] [46.91]	1.516 [38.51] [38.25]	2.103 [53.42] [52.65]	MS18275-1	25	3	1218293-3	1218293-3
.033 [0.84] [0.69]	.176 [4.47] [3.45]	.040 [1.02] [0.51]	.432 [10.97] [10.46]	1.093 [27.76] [27.25]	.248 [6.30] [6.05]	.439 [11.15] [10.64]	.509 [12.93] [12.17]	.316 [8.03] [7.77]	1.317 [33.45] [33.20]	.976 [24.79] [24.54]	1.556 [39.52] [38.76]	MS18274-1	15	2	1218293-2	1218293-2
.033 [0.84] [0.69]	.176 [4.47] [3.45]	.040 [1.02] [0.51]	.432 [10.97] [10.46]	.769 [19.53] [19.02]	.248 [6.30] [6.05]	.439 [11.15] [10.64]	.509 [12.93] [12.17]	.316 [8.03] [7.77]	.989 [25.12] [24.87]	.648 [16.46] [16.21]	1.228 [31.19] [30.43]	MS18273-1	9	1	1218293-1	1218293-1

THIS DRAWING IS A CONTROLLED DOCUMENT.

DIMENSIONS: INCHES
 TOLERANCES UNLESS OTHERWISE SPECIFIED:
 0 PLC ± .0005
 1 PLC ± .0005
 2 PLC ± .0005
 3 PLC ± .0005
 4 PLC ± .0005
 ANGLES ± .0005

MATERIAL: SEE CALLOUTS
 FINISH: SEE CALLOUTS

WEIGHT: —
 CUSTOMER DRAWING: —

TYP: C.C. THOMAS
 CHK: D. HOFFMAN
 APVD: D. HOFFMAN

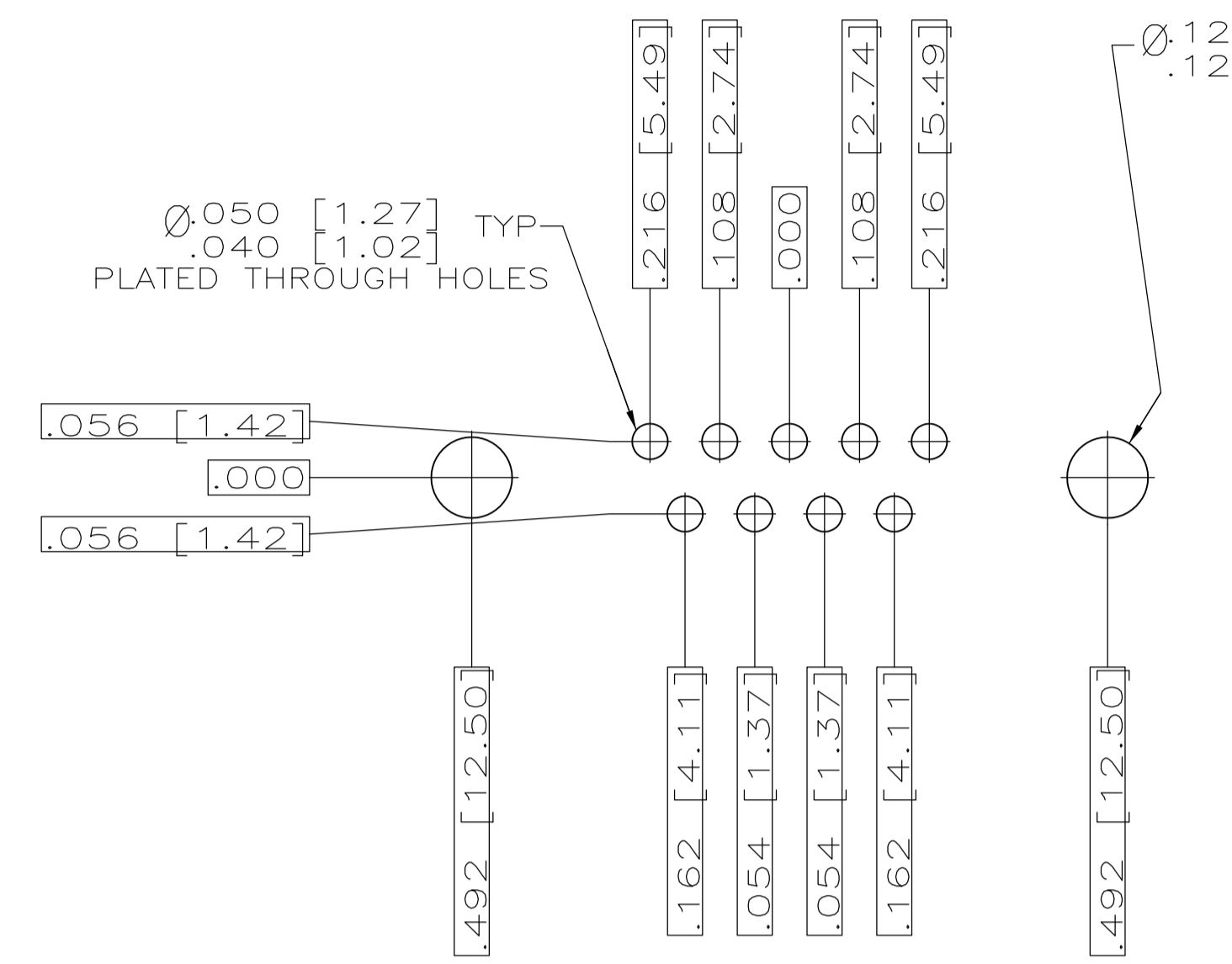
Tyco Electronics Corporation
 Harrisburg, PA 17105-3608

NAME: AMPHIMITE RECEPTACLE ASSY, LOW PROFILE
 SIZE 20 POSTED CONTACTS
 SERIES 109, SIZE 1 THRU 5

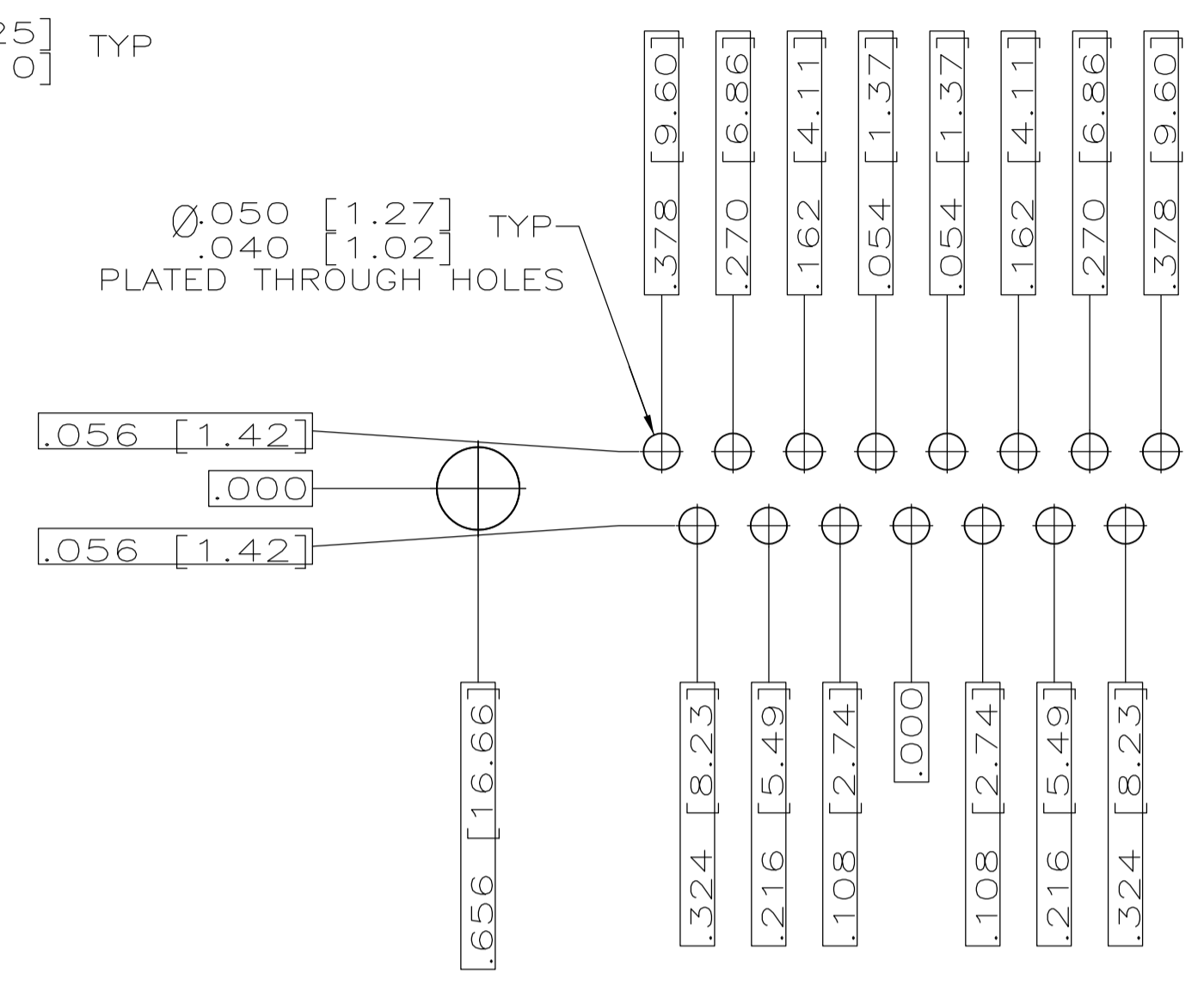
SIZE: A1
 CASE CODE: 00779
 DRAWING NO: 1218293

RESTRICTED TO: —
 SCALE: 1:1
 SHEET: 1 OF 2
 REV: C

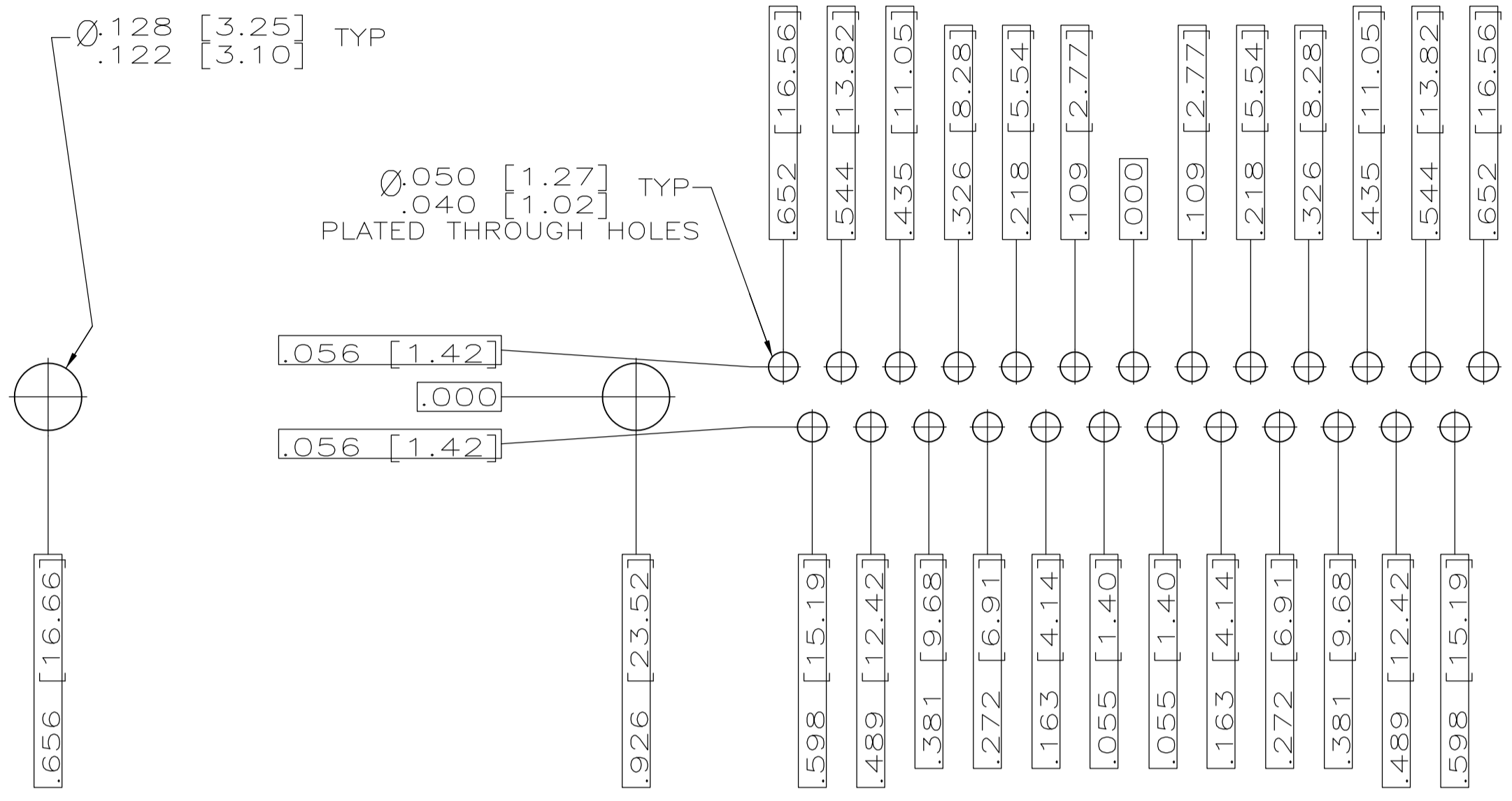
REVISONS		DATE	BY	APPROVED
NO.	DESCRIPTION			
1	SEE SHEET 1	-	-	-



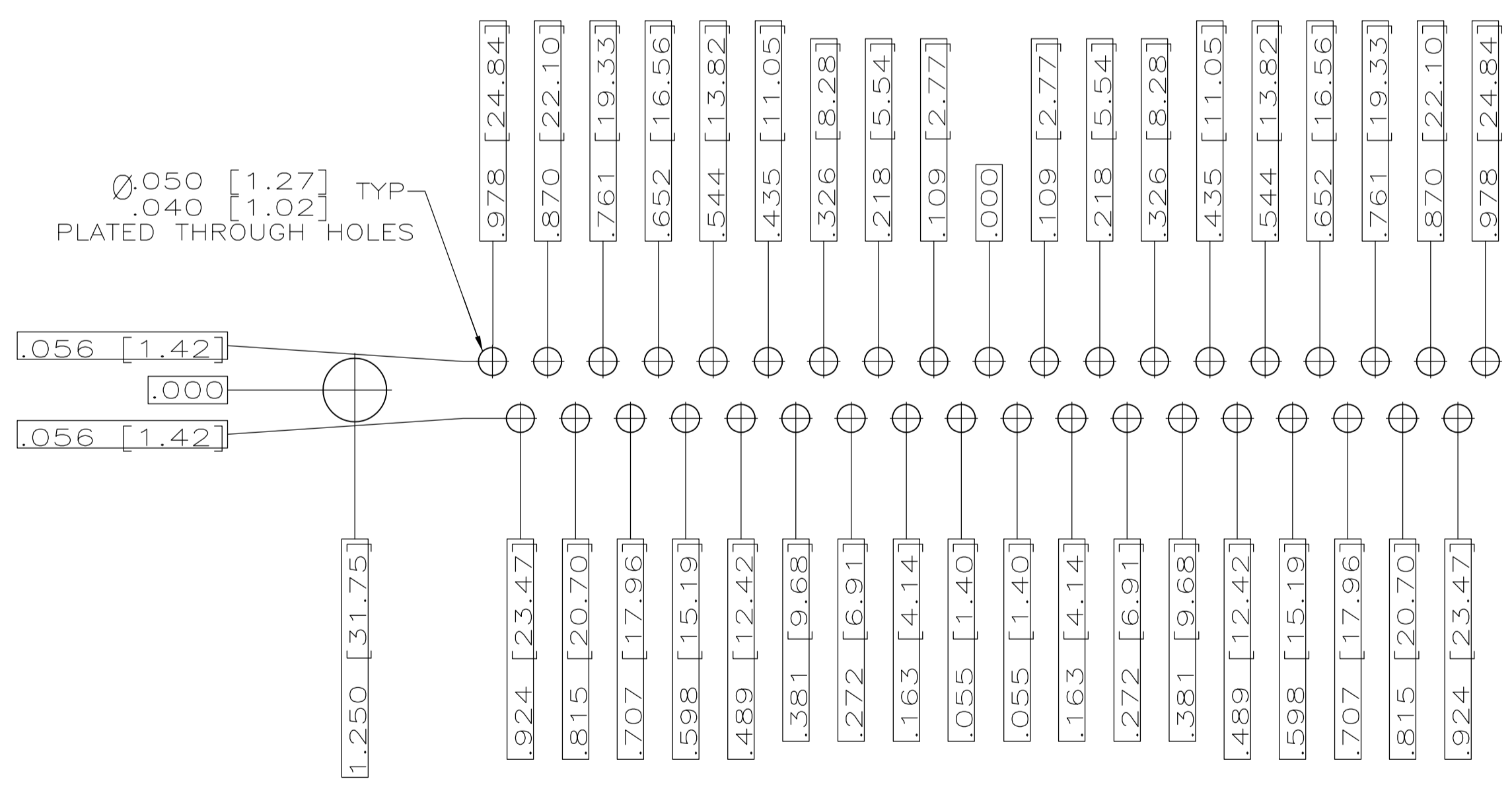
RECOMMENDED P.C. BOARD LAYOUT
SHELL SIZE 1 (9 POSITION) ⚠



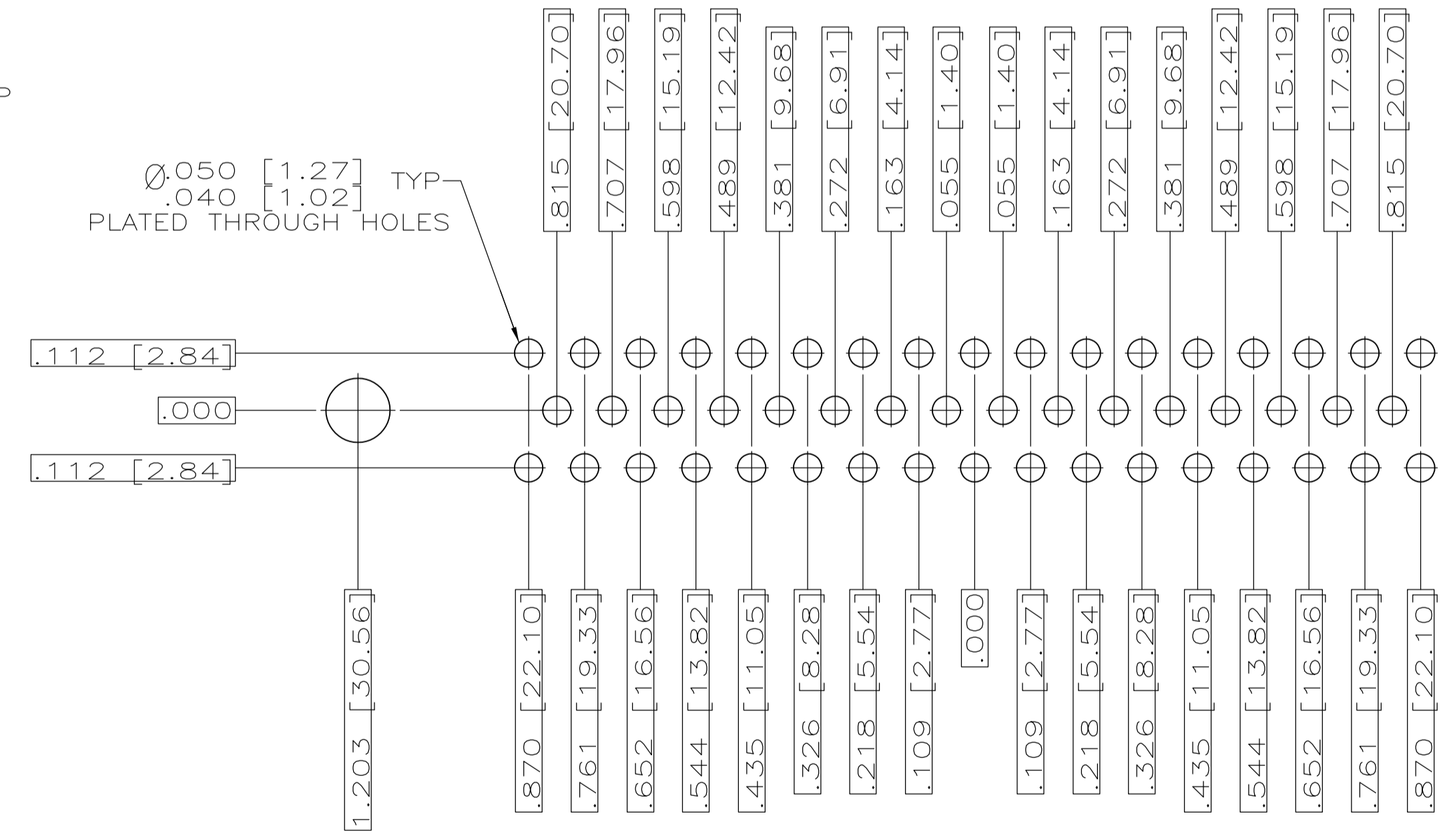
RECOMMENDED P.C. BOARD LAYOUT
SHELL SIZE 2 (15 POSITION) ⚠



RECOMMENDED P.C. BOARD LAYOUT
SHELL SIZE 3 (25 POSITION) ⚠



RECOMMENDED P.C. BOARD LAYOUT
SHELL SIZE 4 (37 POSITION) ⚠



RECOMMENDED P.C. BOARD LAYOUT
SHELL SIZE 5 (50 POSITION) ⚠

THIS DRAWING IS A CONTROLLED DOCUMENT.		DWG NO. C.C.THOMAS 14OCT99	Tyco Electronics Corporation Harrisburg, PA 17105-3608
DIMENSIONS: INCHES		CHK: D.HOFFMAN 18OCT99	
TOLERANCES UNLESS OTHERWISE SPECIFIED:		APP'D: D.HOFFMAN 18OCT99	NAME: D.HOFFMAN
0 PL ± .005 1 PL ± .005 2 PL ± .005 3 PL ± .005 4 PL ± .005 ALL DIMENSIONS ± .005	0 PL ± .005 1 PL ± .005 2 PL ± .005 3 PL ± .005 4 PL ± .005 ALL DIMENSIONS ± .005	APPLICATION SPEC SIZE: A1 CAGE CODE: 00779 DRAWING NO: 1218293	PRODUCT SPEC: AMPLIMITE RECEPTACLE ASSY, LOW PROFILE SIZE 20 POSTED CONTACTS SERIES 109, SIZE 1 THRU 5 RESTRICTED TO: CUSTOMER DRAWING
MATERIAL: SEE CALLOUTS	FINISH: SEE CALLOUTS	WEIGHT: -	SCALE: 1:1 SHEET 2 OF 2 REV C

Компания «Life Electronics» занимается поставками электронных компонентов импортного и отечественного производства от производителей и со складов крупных дистрибьюторов Европы, Америки и Азии.

С конца 2013 года компания активно расширяет линейку поставок компонентов по направлению коаксиальный кабель, кварцевые генераторы и конденсаторы (керамические, пленочные, электролитические), за счёт заключения дистрибьюторских договоров

Мы предлагаем:

- Конкурентоспособные цены и скидки постоянным клиентам.
- Специальные условия для постоянных клиентов.
- Подбор аналогов.
- Поставку компонентов в любых объемах, удовлетворяющих вашим потребностям.
- Приемлемые сроки поставки, возможна ускоренная поставка.
- Доставку товара в любую точку России и стран СНГ.
- Комплексную поставку.
- Работу по проектам и поставку образцов.
- Формирование склада под заказчика.
- Сертификаты соответствия на поставляемую продукцию (по желанию клиента).
- Тестирование поставляемой продукции.
- Поставку компонентов, требующих военную и космическую приемку.
- Входной контроль качества.
- Наличие сертификата ISO.

В составе нашей компании организован Конструкторский отдел, призванный помогать разработчикам, и инженерам.

Конструкторский отдел помогает осуществить:

- Регистрацию проекта у производителя компонентов.
- Техническую поддержку проекта.
- Защиту от снятия компонента с производства.
- Оценку стоимости проекта по компонентам.
- Изготовление тестовой платы монтаж и пусконаладочные работы.



Тел: +7 (812) 336 43 04 (многоканальный)
Email: org@lifeelectronics.ru