

REVISIONS				
REV.	ECN	DESCRIPTION	DATE	APPROVED
A		PROPOSAL	JUN 02,11	J.SI
B		PROPOSAL	MAR 01,12	J.SI

- NOTES:
- MATERIAL:
CAGE: COPPER ALLOY

PLATING OPTION X=2:
2.54um MIN. NICKEL

PLATING OPTION X=3:
3.81um MIN. MATTE TIN
OVER 1.27um MIN. NICKEL.
 - TEMPERATURE RANGE:
-40°C TO +85°C
 - PACKAGING:
TRAY PACKAGING

AMPHENOL PART NUMBER CONFIGURATION
U77 - A 2 6 1 H - X 0 8 1

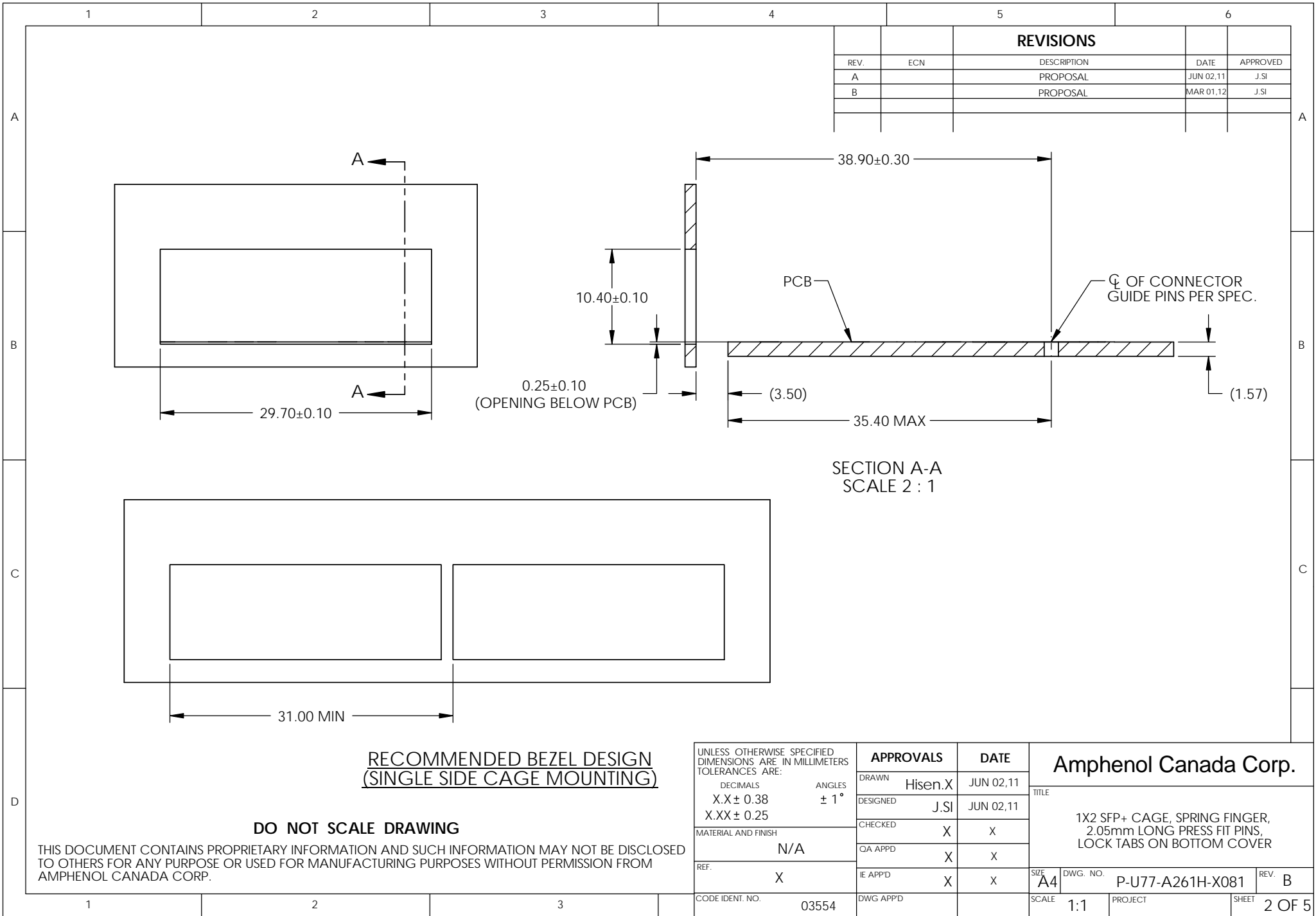
- PACKAGING**
1 = TRAY PACKAGING
- PLATING**
2 = NICKEL PLATING
3 = MATTE TIN PLATING

DO NOT SCALE DRAWING

THIS DOCUMENT CONTAINS PROPRIETARY INFORMATION AND SUCH INFORMATION MAY NOT BE DISCLOSED TO OTHERS FOR ANY PURPOSE OR USED FOR MANUFACTURING PURPOSES WITHOUT PERMISSION FROM AMPHENOL CANADA CORP.

UNLESS OTHERWISE SPECIFIED DIMENSIONS ARE IN MILLIMETERS TOLERANCES ARE: DECIMALS X.X ± 0.38 X.XX ± 0.25 MATERIAL AND FINISH N/A REF. X CODE IDENT. NO. 03554	APPROVALS		DATE
	DRAWN Hisen.X	JUN 02,11	
	DESIGNED J.SI	JUN 02,11	
	CHECKED X	X	
	QA APPD X	X	
	IE APPD X	X	

Amphenol Canada Corp.		
TITLE		
1X2 SFP+ CAGE, SPRING FINGER, 2.05mm LONG PRESS FIT PINS, LOCK TABS ON BOTTOM COVER		
SIZE A4	DWG. NO. P-U77-A261H-X081	REV. B
SCALE 3:2	PROJECT	SHEET 1 OF 5



REVISIONS				
REV.	ECN	DESCRIPTION	DATE	APPROVED
A		PROPOSAL	JUN 02,11	J.SI
B		PROPOSAL	MAR 01,12	J.SI

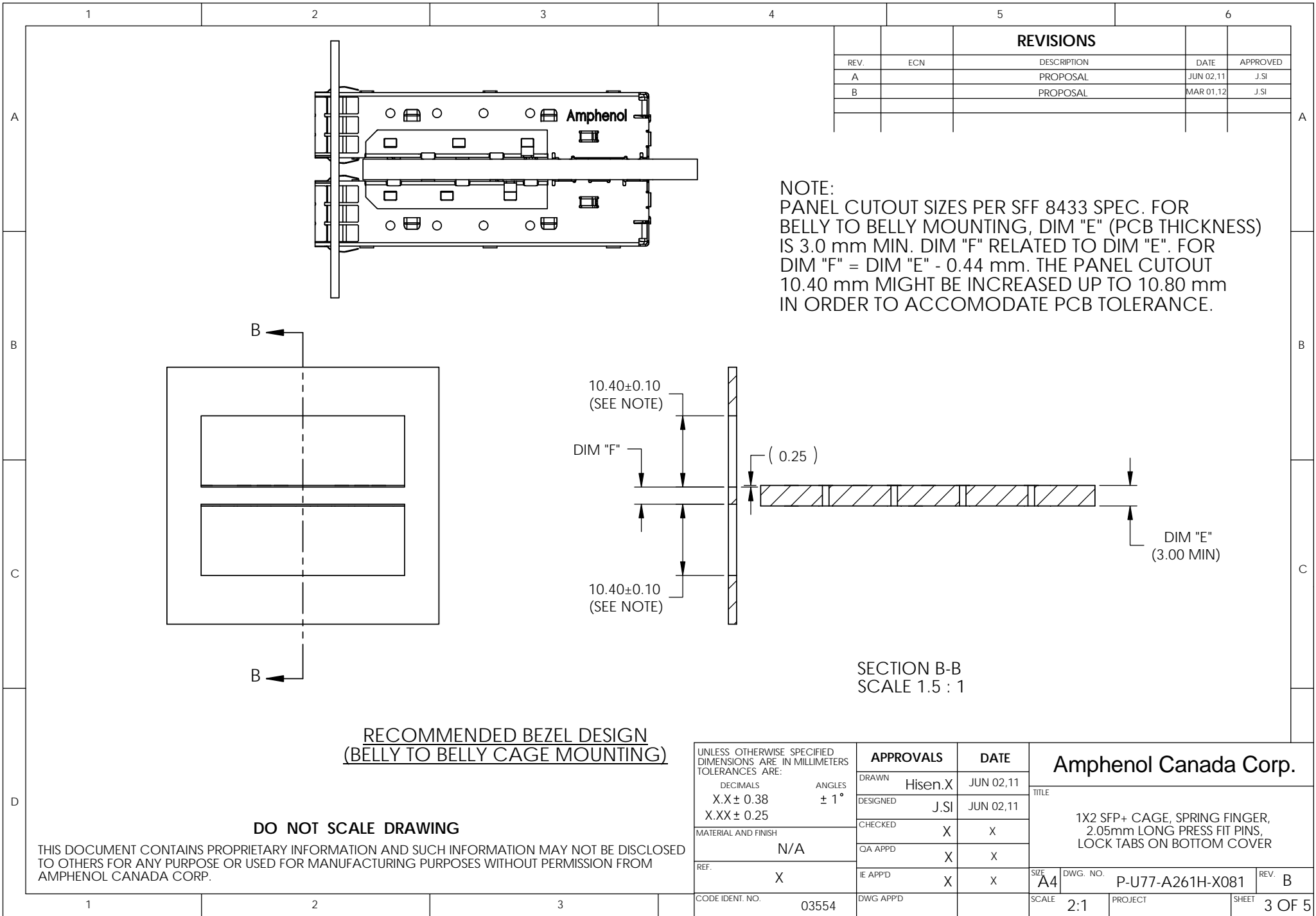
**RECOMMENDED BEZEL DESIGN
(SINGLE SIDE CAGE MOUNTING)**

DO NOT SCALE DRAWING

THIS DOCUMENT CONTAINS PROPRIETARY INFORMATION AND SUCH INFORMATION MAY NOT BE DISCLOSED TO OTHERS FOR ANY PURPOSE OR USED FOR MANUFACTURING PURPOSES WITHOUT PERMISSION FROM AMPHENOL CANADA CORP.

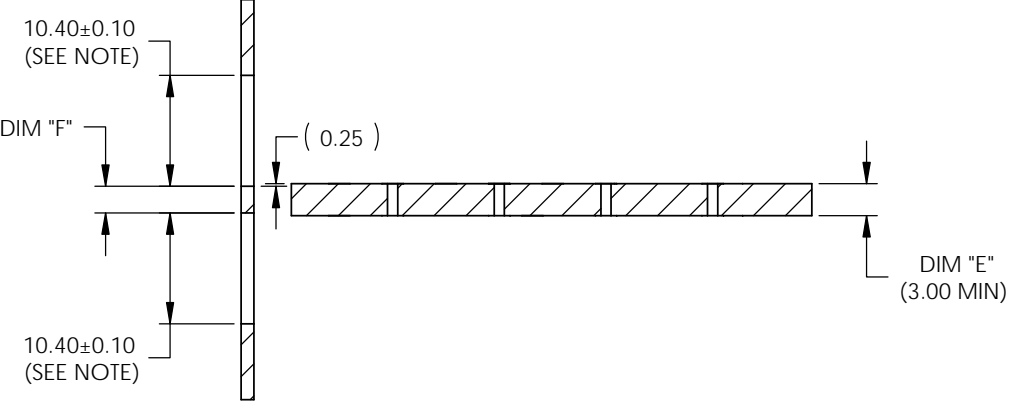
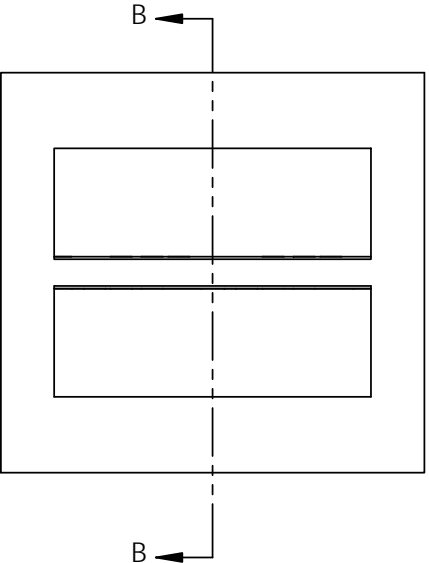
UNLESS OTHERWISE SPECIFIED DIMENSIONS ARE IN MILLIMETERS TOLERANCES ARE: DECIMALS X.X ± 0.38 X.XX ± 0.25 MATERIAL AND FINISH N/A REF. X CODE IDENT. NO. 03554	APPROVALS		DATE
	DRAWN Hisen.X	JUN 02,11	
	DESIGNED J.SI	JUN 02,11	
	CHECKED X	X	
	QA APPD X	X	
	IE APPD X	X	
	DWG APPD		

Amphenol Canada Corp.			
TITLE			
1X2 SFP+ CAGE, SPRING FINGER, 2.05mm LONG PRESS FIT PINS, LOCK TABS ON BOTTOM COVER			
SIZE A4	DWG. NO. P-U77-A261H-X081	REV. B	
SCALE 1:1	PROJECT	SHEET 2 OF 5	



REVISIONS				
REV.	ECN	DESCRIPTION	DATE	APPROVED
A		PROPOSAL	JUN 02,11	J.SI
B		PROPOSAL	MAR 01,12	J.SI

NOTE:
 PANEL CUTOUT SIZES PER SFF 8433 SPEC. FOR BELLY TO BELLY MOUNTING, DIM "E" (PCB THICKNESS) IS 3.0 mm MIN. DIM "F" RELATED TO DIM "E". FOR DIM "F" = DIM "E" - 0.44 mm. THE PANEL CUTOUT 10.40 mm MIGHT BE INCREASED UP TO 10.80 mm IN ORDER TO ACCOMODATE PCB TOLERANCE.



SECTION B-B
 SCALE 1.5 : 1

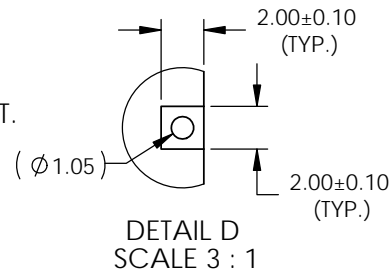
RECOMMENDED BEZEL DESIGN
(BELLY TO BELLY CAGE MOUNTING)

DO NOT SCALE DRAWING

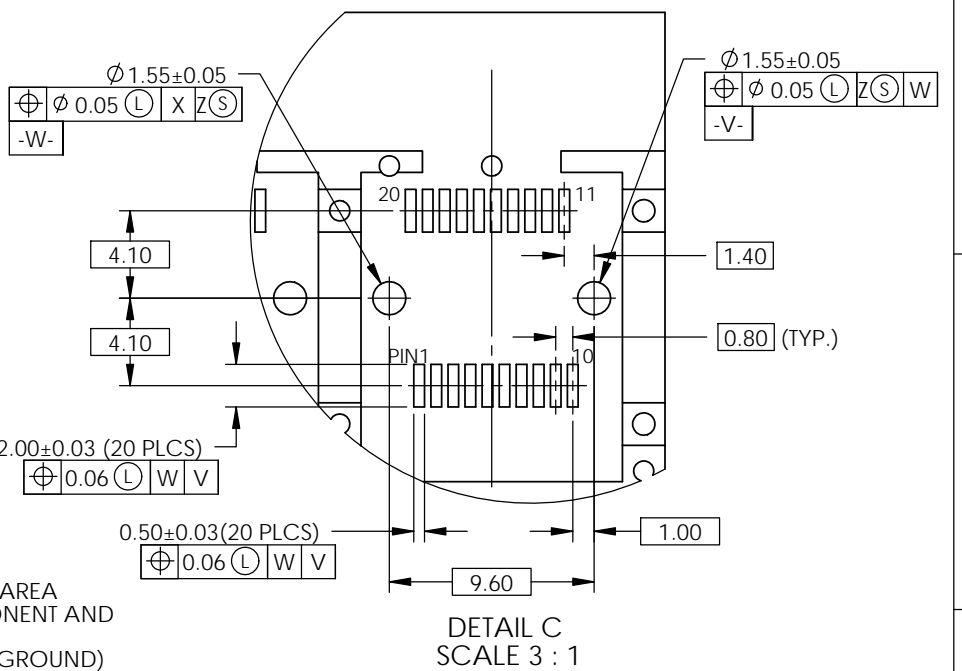
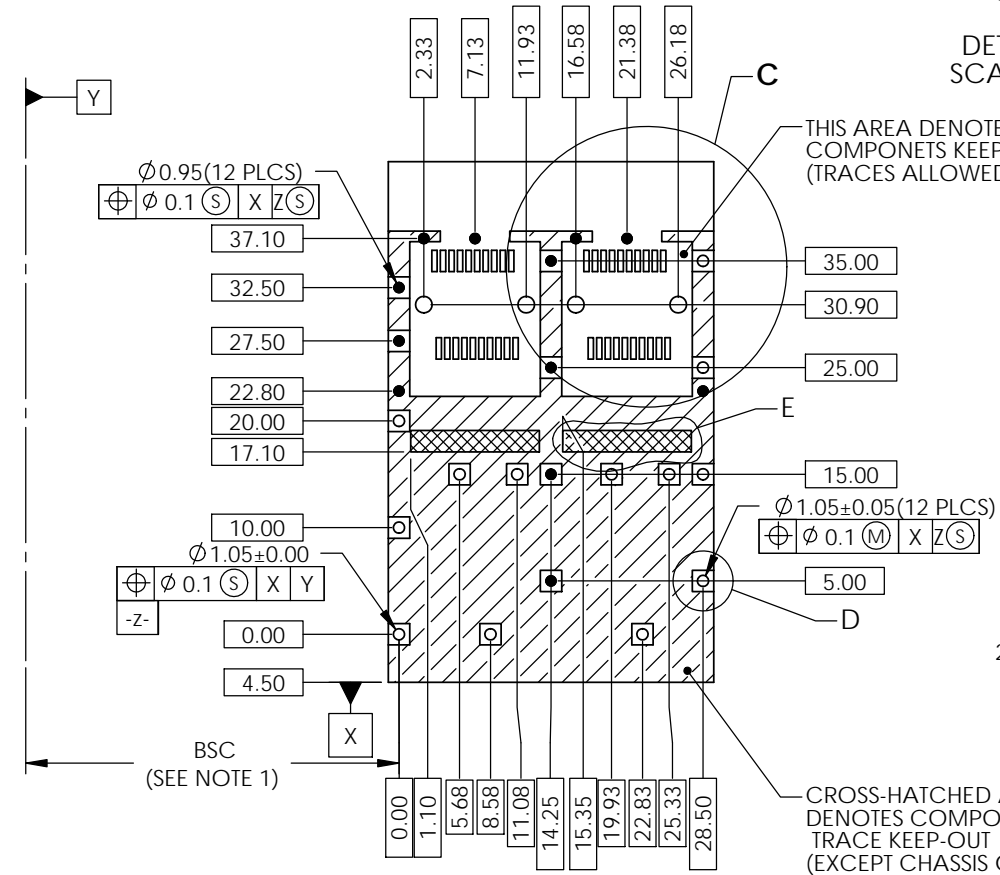
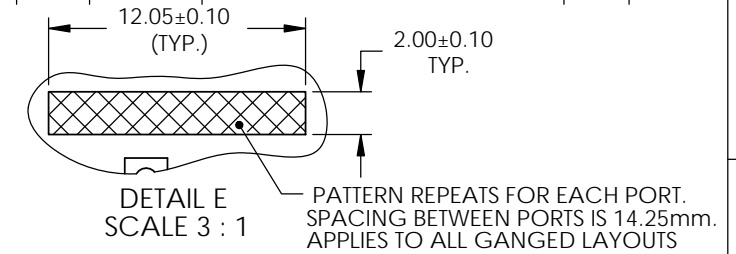
THIS DOCUMENT CONTAINS PROPRIETARY INFORMATION AND SUCH INFORMATION MAY NOT BE DISCLOSED TO OTHERS FOR ANY PURPOSE OR USED FOR MANUFACTURING PURPOSES WITHOUT PERMISSION FROM AMPHENOL CANADA CORP.

UNLESS OTHERWISE SPECIFIED DIMENSIONS ARE IN MILLIMETERS TOLERANCES ARE:		APPROVALS		DATE	Amphenol Canada Corp.	
DECIMALS	ANGLES	DRAWN	Hisen.X	JUN 02,11		
X.X ± 0.38	± 1°	DESIGNED	J.SI	JUN 02,11	TITLE 1X2 SFP+ CAGE, SPRING FINGER, 2.05mm LONG PRESS FIT PINS, LOCK TABS ON BOTTOM COVER	
X.XX ± 0.25		CHECKED	X	X		
MATERIAL AND FINISH	N/A	QA APPD	X	X		
REF.	X	IE APPD	X	X		
CODE IDENT. NO.	03554	DWG APPD			SIZE A4	DWG. NO. P-U77-A261H-X081
					SCALE 2:1	PROJECT
						SHEET 3 OF 5

- NOTES:
 1. DATUM AND BASIC DIMENSIONS ESTABLISHED BY CUSTOMER.
 2. PADS AND VIAS ARE CHASSIS GROUND.
 3. THRU-HOLES, PLATING OPTIONAL.
 4. SEE DRAWINGS P-UX76-A20-X00XX FOR CONNECTOR LAYOUT.



REVISIONS				
REV.	ECN	DESCRIPTION	DATE	APPROVED
A		PROPOSAL	JUN 02,11	J.SI
B		PROPOSAL	MAR 01,12	J.SI



RECOMMENDED PCB DESIGN FOR SINGLE SIDE MOUNTING

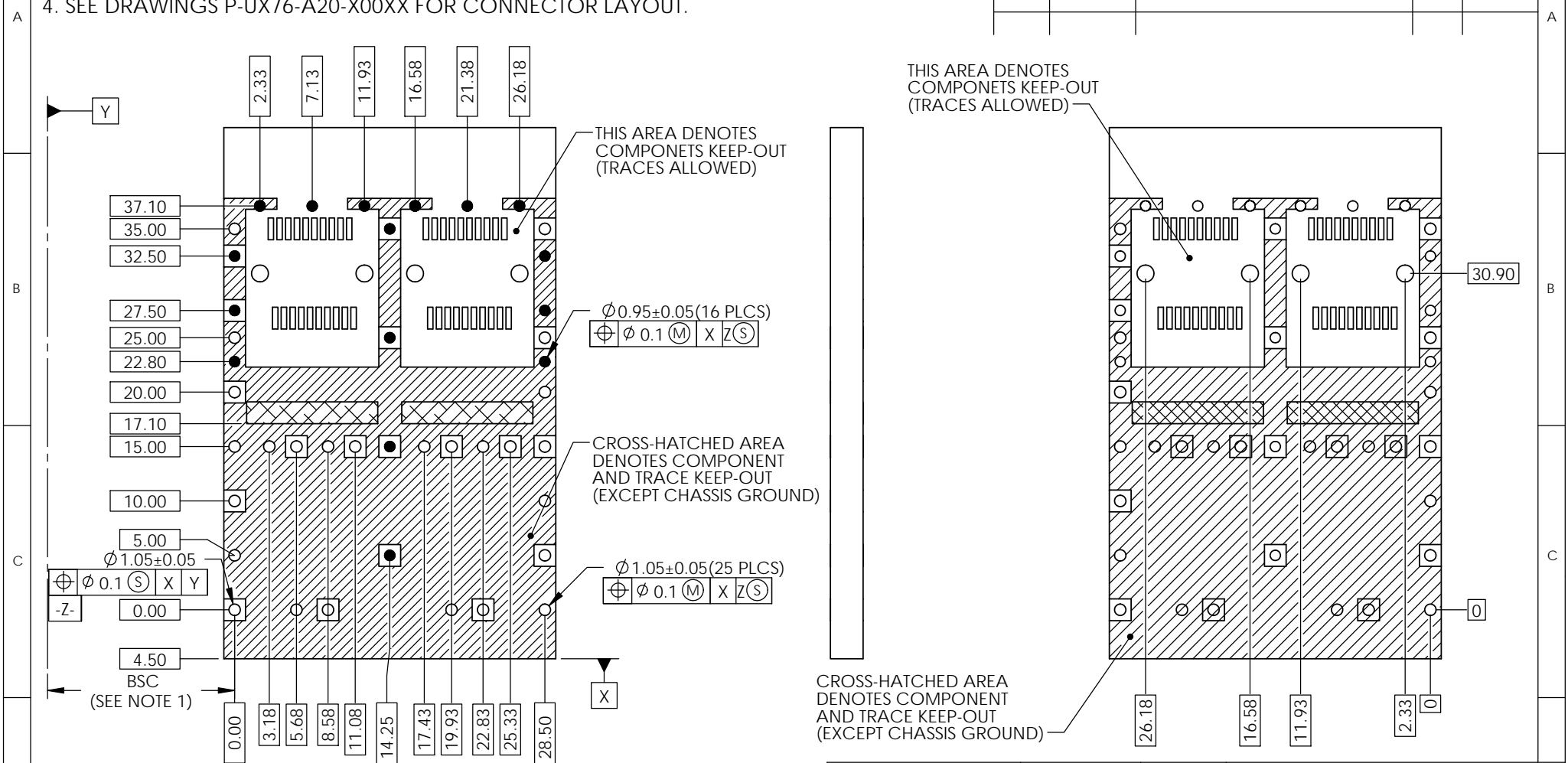
DO NOT SCALE DRAWING

THIS DOCUMENT CONTAINS PROPRIETARY INFORMATION AND SUCH INFORMATION MAY NOT BE DISCLOSED TO OTHERS FOR ANY PURPOSE OR USED FOR MANUFACTURING PURPOSES WITHOUT PERMISSION FROM AMPHENOL CANADA CORP.

UNLESS OTHERWISE SPECIFIED DIMENSIONS ARE IN MILLIMETERS TOLERANCES ARE: DECIMALS X.X ± 0.38 X.XX ± 0.25 MATERIAL AND FINISH N/A REF. X CODE IDENT. NO. 03554	APPROVALS	DATE	Amphenol Canada Corp.
	DRAWN Hisen.X	JUN 02,11	
	DESIGNED J.SI	JUN 02,11	TITLE
	CHECKED X	X	1X2 SFP+ CAGE, SPRING FINGER, 2.05mm LONG PRESS FIT PINS, LOCK TABS ON BOTTOM COVER
	QA APPD X	X	
	IE APPD X	X	SIZE A4 DWG. NO. P-U77-A261H-X081
	DWG APPD		REV. B
	SCALE 2:1	PROJECT	SHEET 4 OF 5

- NOTES:
 1. DATUM AND BASIC DIMENSIONS ESTABLISHED BY CUSTOMER.
 2. PADS AND VIAS ARE CHASSIS GROUND.
 3. THRU-HOLES, PLATING OPTIONAL.
 4. SEE DRAWINGS P-UX76-A20-X00XX FOR CONNECTOR LAYOUT.

REVISIONS				
REV.	ECN	DESCRIPTION	DATE	APPROVED
A		PROPOSAL	JUN 02,11	J.SI
B		PROPOSAL	MAR 01,12	J.SI



THIS AREA DENOTES COMPONENTS KEEP-OUT (TRACES ALLOWED)

THIS AREA DENOTES COMPONENTS KEEP-OUT (TRACES ALLOWED)

Ø 0.95±0.05 (16 PLCS)
 Ø 0.1 (M) X Z (S)

CROSS-HATCHED AREA DENOTES COMPONENT AND TRACE KEEP-OUT (EXCEPT CHASSIS GROUND)

Ø 1.05±0.05 (25 PLCS)
 Ø 0.1 (M) X Z (S)

CROSS-HATCHED AREA DENOTES COMPONENT AND TRACE KEEP-OUT (EXCEPT CHASSIS GROUND)

RECOMMENDED PCB DESIGN FOR BELLY TO BELLY MOUNTING

DO NOT SCALE DRAWING

THIS DOCUMENT CONTAINS PROPRIETARY INFORMATION AND SUCH INFORMATION MAY NOT BE DISCLOSED TO OTHERS FOR ANY PURPOSE OR USED FOR MANUFACTURING PURPOSES WITHOUT PERMISSION FROM AMPHENOL CANADA CORP.

UNLESS OTHERWISE SPECIFIED DIMENSIONS ARE IN MILLIMETERS TOLERANCES ARE: DECIMALS X.X ± 0.38 X.XX ± 0.25 ANGLES ± 1° MATERIAL AND FINISH N/A REF. X CODE IDENT. NO. 03554	APPROVALS		DATE	Amphenol Canada Corp. TITLE 1X2 SFP+ CAGE, SPRING FINGER, 2.05mm LONG PRESS FIT PINS, LOCK TABS ON BOTTOM COVER SIZE A4 DWG. NO. P-U77-A261H-X081 REV. B SCALE 3:1 PROJECT SHEET 5 OF 5
	DRAWN Hisen.X	JUN 02,11		
	DESIGNED J.SI	JUN 02,11		
	CHECKED X	X		
	QA APPD X	X		
	IE APPD X	X		

Компания «Life Electronics» занимается поставками электронных компонентов импортного и отечественного производства от производителей и со складов крупных дистрибьюторов Европы, Америки и Азии.

С конца 2013 года компания активно расширяет линейку поставок компонентов по направлению коаксиальный кабель, кварцевые генераторы и конденсаторы (керамические, пленочные, электролитические), за счёт заключения дистрибьюторских договоров

Мы предлагаем:

- Конкуренспособные цены и скидки постоянным клиентам.
- Специальные условия для постоянных клиентов.
- Подбор аналогов.
- Поставку компонентов в любых объемах, удовлетворяющих вашим потребностям.
- Приемлемые сроки поставки, возможна ускоренная поставка.
- Доставку товара в любую точку России и стран СНГ.
- Комплексную поставку.
- Работу по проектам и поставку образцов.
- Формирование склада под заказчика.
- Сертификаты соответствия на поставляемую продукцию (по желанию клиента).
- Тестирование поставляемой продукции.
- Поставку компонентов, требующих военную и космическую приемку.
- Входной контроль качества.
- Наличие сертификата ISO.

В составе нашей компании организован Конструкторский отдел, призванный помогать разработчикам, и инженерам.

Конструкторский отдел помогает осуществить:

- Регистрацию проекта у производителя компонентов.
- Техническую поддержку проекта.
- Защиту от снятия компонента с производства.
- Оценку стоимости проекта по компонентам.
- Изготовление тестовой платы монтаж и пусконаладочные работы.



Тел: +7 (812) 336 43 04 (многоканальный)
Email: org@lifeelectronics.ru