

# Fine Pitch SMT Board to Board Connectors

## Series 5602



Series 5602 is a two-piece 0.4mm pitch, PCB stacking connector. Offered at a 1.5mm stack height, Series 5602 is ideal for high density packaging applications.

Market applications include mobile PC's, PDA's, DVD, Cell Phones and Digital Cameras.

### FEATURES

0.4mm fine pitch and low profile connector, with stacking height of 1.5mm. These features result in the highest density stacking connector in the industry.

The connector design provides for an audible click, which confirms that the contacts are properly mated.

Offered with, and without, metal strain relief and boss.

Designed to prevent solder wicking.

Enclosed SMT contacts, provide for high density routing, by allowing traces to be located under the connector.

Ideal for FPC to PCB connections.

Compatible with high temperature, lead free, soldering processes.

Packaging consists of 2,000 connectors per reel.

### SPECIFICATIONS

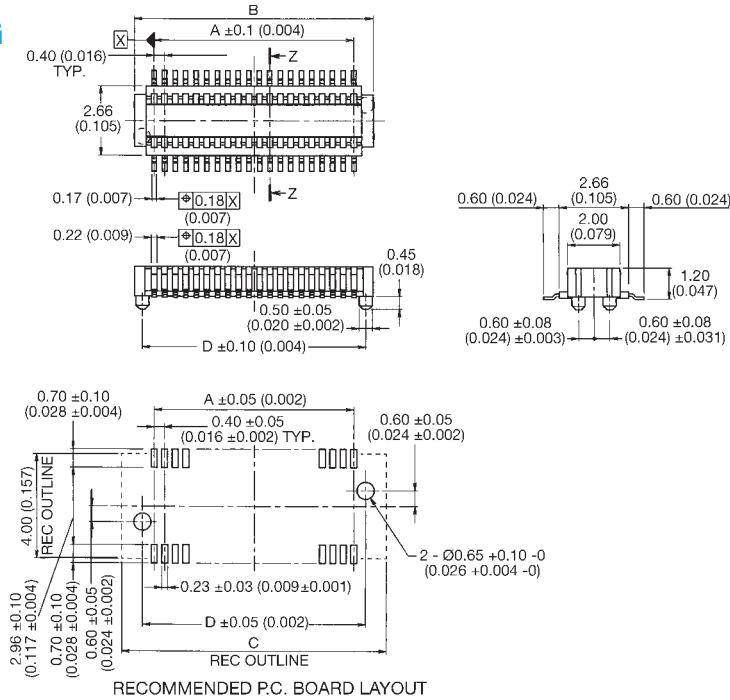
Series	5602
Mated Height	1.5mm
Pitch	0.4mm
Current	0.4A Max
Voltage	50V Max
D.W. Voltage	250V Max/min.
Mating Cycles	30

# Fine Pitch SMT Board to Board Connectors



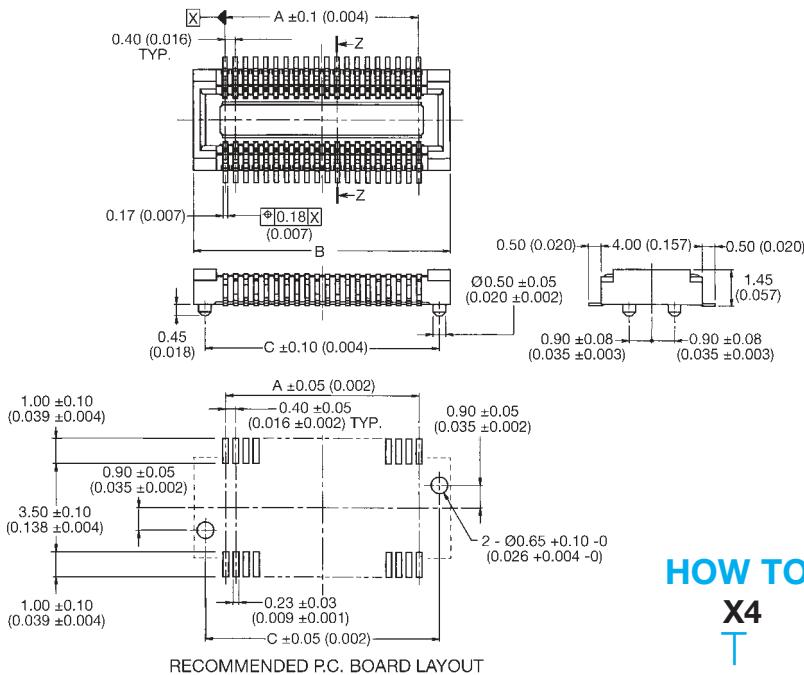
## Series 5602 – 1.5mm Mated Height, without Strain Relief

### PLUG



No. of Pos.	Dimension			
	A	B	C	D
020	3.6 (0.142)	5.1 (0.201)	6.1 (0.205)	4.5 (0.177)
024	4.4 (0.173)	5.9 (0.232)	6.9 (0.272)	5.3 (0.209)
030	5.6 (0.220)	7.1 (0.280)	8.1 (0.319)	6.5 (0.256)
034	6.4 (0.252)	7.9 (0.311)	8.9 (0.350)	7.3 (0.287)
040	7.6 (0.300)	9.1 (0.358)	10.1 (0.397)	8.5 (0.335)
050	9.6 (0.378)	11.1 (0.437)	12.1 (0.478)	10.5 (0.413)
060	11.6 (0.457)	13.1 (0.516)	14.1 (0.555)	12.5 (0.492)
070	13.6 (0.535)	15.1 (0.594)	16.1 (0.634)	14.5 (0.571)
080	15.6 (0.614)	17.1 (0.673)	18.1 (0.713)	16.5 (0.650)

### RECEPTACLE



No. of Pos.	Dimension		
	A	B	C
020	3.6 (0.142)	6.1 (0.240)	5.2 (0.20)
024	4.4 (0.173)	6.9 (0.272)	6.0 (0.236)
030	5.6 (0.220)	8.1 (0.319)	7.2 (0.283)
034	6.6 (0.260)	8.9 (0.350)	8.0 (0.315)
040	7.6 (0.300)	10.1 (0.397)	9.2 (0.363)
050	9.6 (0.378)	12.1 (0.476)	11.2 (0.441)
060	11.6 (0.457)	14.1 (0.555)	13.2 (0.520)
070	13.6 (0.535)	16.1 (0.634)	15.2 (0.598)
080	15.6 (0.614)	18.1 (0.713)	17.2 (0.677)

### HOW TO ORDER

<b>X4</b>	<b>5602</b>	<b>XXX</b>	<b>00X</b>	<b>829</b>
Prefix	Series Number	Number of Positions	Variation Code	Finish Code
14 = Plug 24 = Receptacle			0 = Without Strain Relief and without Boss 1 = Without Strain Relief and with Boss	
				020 024 030 034 040 050 060 070 080

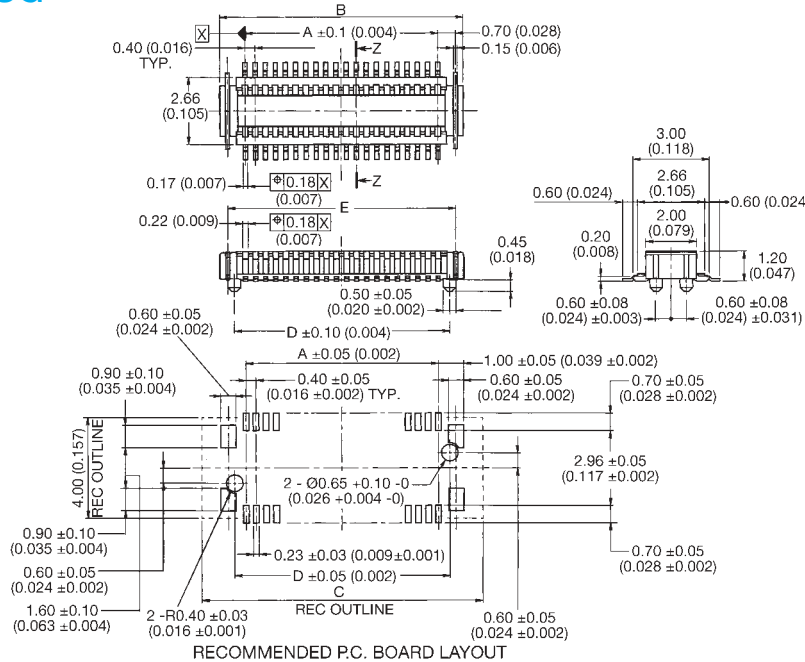
Parts are supplied in tape and reel packaging with 2000 pieces per reel.

# Fine Pitch SMT Board to Board Connectors

## Series 5602 – 1.5mm Mated Height, with Strain Relief

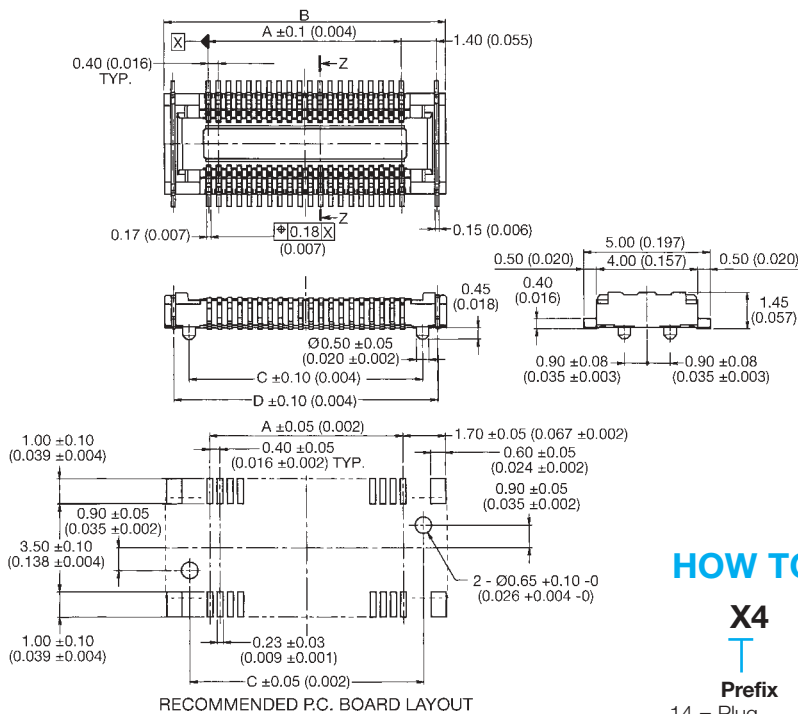


### PLUG



No. of Pos.	Dimension				
	A	B	C	D	E
020	3.6 (0.142)	5.6 (0.220)	7.1 (0.280)	4.5 (0.177)	5.0 (0.197)
024	4.4 (0.173)	6.4 (0.252)	7.9 (0.3112)	5.3 (0.209)	5.8 (0.228)
030	5.6 (0.220)	7.6 (0.299)	9.1 (0.358)	6.5 (0.256)	7.0 (0.276)
034	6.4 (0.252)	8.4 (0.331)	9.9 (0.390)	7.3 (0.287)	7.8 (0.307)
040	7.6 (0.300)	9.6 (0.378)	11.1 (0.437)	8.5 (0.335)	9.0 (0.354)
050	9.6 (0.378)	11.6 (0.457)	13.1 (0.516)	10.5 (0.413)	11.0 (0.433)
060	11.6 (0.457)	13.6 (0.535)	15.1 (0.594)	12.5 (0.492)	13.0 (0.512)
070	13.6 (0.535)	15.6 (0.614)	17.1 (0.673)	14.5 (0.571)	15.0 (0.591)
080	15.6 (0.614)	17.6 (0.693)	19.1 (0.752)	16.5 (0.650)	17.0 (0.669)

### RECEPTACLE



No. of Pos.	Dimension			
	A	B	C	D
020	3.6 (0.142)	7.1 (0.280)	5.2 (0.205)	6.4 (0.252)
024	4.4 (0.173)	7.9 (0.311)	6.0 (0.236)	7.2 (0.283)
030	5.6 (0.220)	9.1 (0.358)	7.2 (0.283)	8.4 (0.331)
034	6.4 (0.252)	9.9 (0.390)	8.0 (0.315)	9.2 (0.362)
040	7.6 (0.300)	11.1 (0.437)	9.2 (0.362)	10.4 (0.409)
050	9.6 (0.378)	13.1 (0.516)	11.2 (0.441)	12.4 (0.488)
060	11.6 (0.457)	15.1 (0.594)	13.2 (0.520)	14.4 (0.567)
070	13.6 (0.535)	17.1 (0.673)	15.2 (0.598)	16.4 (0.646)
080	15.6 (0.614)	19.1 (0.752)	17.2 (0.677)	18.4 (0.724)

### HOW TO ORDER

**X4**

Prefix

14 = Plug  
24 = Receptacle

**5602**

Series Number

**XXX**

Number of Positions

020  
024  
030  
034  
040  
050  
060  
070  
080

**00X**

Variation Code

2 = With Strain Relief and without Boss  
3 = With Strain Relief and with Boss

**829**

Finish Code

Parts are supplied in tape and reel packaging with 2000 pieces per reel.

# Fine Pitch SMT Board to Board Connectors

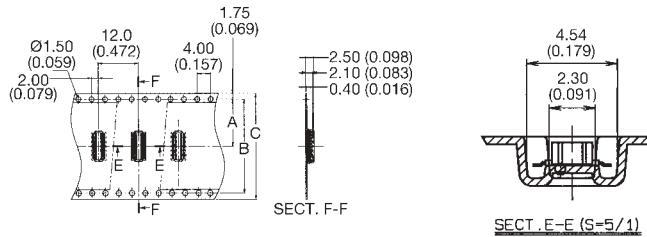
## Series 5602

### Tape and Reel Package for Mated Height 1.5mm

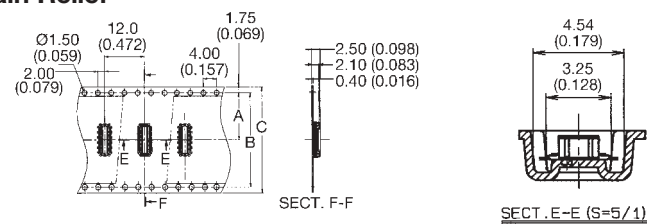


## PLUG

Without Strain Relief



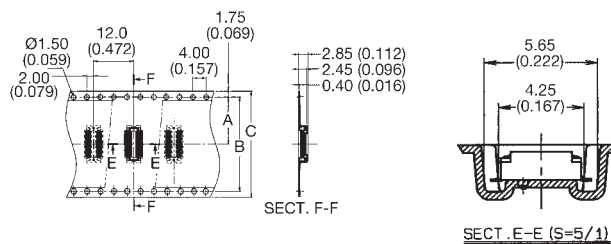
With Strain Relief



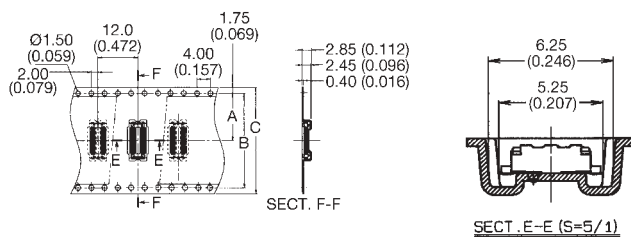
No. of Pos.	Dimension			
	A	B	C	D
020	11.5 (0.453)	-	24 (0.945)	30.4 (1.197)
024	11.5 (0.453)	-	24 (0.945)	30.4 (1.197)
030	11.5 (0.453)	-	24 (0.945)	30.4 (1.197)
034	11.5 (0.453)	-	24 (0.945)	30.42 (1.197)
040	11.5 (0.453)	-	24 (0.945)	30.4 (1.197)
050	14.2 (0.559)	28.4 (0.921)	32 (1.260)	38.4 (1.512)
060	14.2 (0.559)	28.4 (0.921)	32 (1.260)	38.4 (1.512)
070	14.2 (0.559)	28.4 (0.921)	32 (1.260)	38.4 (1.512)
080	14.2 (0.559)	28.4 (0.921)	32 (1.260)	38.4 (1.512)

## RECEPTACLE

Without Strain Relief



With Strain Relief



No. of Pos.	Dimension			
	A	B	C	D
020	11.5 (0.453)	-	24 (0.945)	30.4 (1.197)
024	11.5 (0.453)	-	24 (0.945)	30.4 (1.197)
030	11.5 (0.453)	-	24 (0.945)	30.4 (1.197)
034	11.5 (0.453)	-	24 (0.945)	30.42 (1.197)
040	11.5 (0.453)	-	24 (0.945)	30.4 (1.197)
050	14.2 (0.559)	28.4 (0.921)	32 (1.260)	38.4 (1.512)
060	14.2 (0.559)	28.4 (0.921)	32 (1.260)	38.4 (1.512)
070	14.2 (0.559)	28.4 (0.921)	32 (1.260)	38.4 (1.512)
080	14.2 (0.559)	28.4 (0.921)	32 (1.260)	38.4 (1.512)

## HOW TO ORDER

**X4**

Prefix

14 = Plug  
24 = Receptacle

**5602**

Series Number

**XXX**

Number of Positions

020  
024  
030  
034  
040  
050  
060  
070  
080

**00X**

Variation Code

0 = Without Strain Relief and without Boss  
1 = Without Strain Relief and with Boss  
2 = With Strain Relief and without Boss  
3 = With Strain Relief and with Boss

**829**

Finish Code

Specification of the catalog might be changed without notice.

Please verify our drawing and specification with your design.

Parts are supplied in tape and reel packaging with 2000 pieces per reel.

Компания «Life Electronics» занимается поставками электронных компонентов импортного и отечественного производства от производителей и со складов крупных дистрибьюторов Европы, Америки и Азии.

С конца 2013 года компания активно расширяет линейку поставок компонентов по направлению коаксиальный кабель, кварцевые генераторы и конденсаторы (керамические, пленочные, электролитические), за счёт заключения дистрибьюторских договоров

Мы предлагаем:

- Конкурентоспособные цены и скидки постоянным клиентам.
- Специальные условия для постоянных клиентов.
- Подбор аналогов.
- Поставку компонентов в любых объемах, удовлетворяющих вашим потребностям.
- Приемлемые сроки поставки, возможна ускоренная поставка.
- Доставку товара в любую точку России и стран СНГ.
- Комплексную поставку.
- Работу по проектам и поставку образцов.
- Формирование склада под заказчика.
- Сертификаты соответствия на поставляемую продукцию (по желанию клиента).
- Тестирование поставляемой продукции.
- Поставку компонентов, требующих военную и космическую приемку.
- Входной контроль качества.
- Наличие сертификата ISO.

В составе нашей компании организован Конструкторский отдел, призванный помогать разработчикам, и инженерам.

Конструкторский отдел помогает осуществить:

- Регистрацию проекта у производителя компонентов.
- Техническую поддержку проекта.
- Защиту от снятия компонента с производства.
- Оценку стоимости проекта по компонентам.
- Изготовление тестовой платы монтаж и пусконаладочные работы.



Тел: +7 (812) 336 43 04 (многоканальный)

Email: [org@lifeelectronics.ru](mailto:org@lifeelectronics.ru)