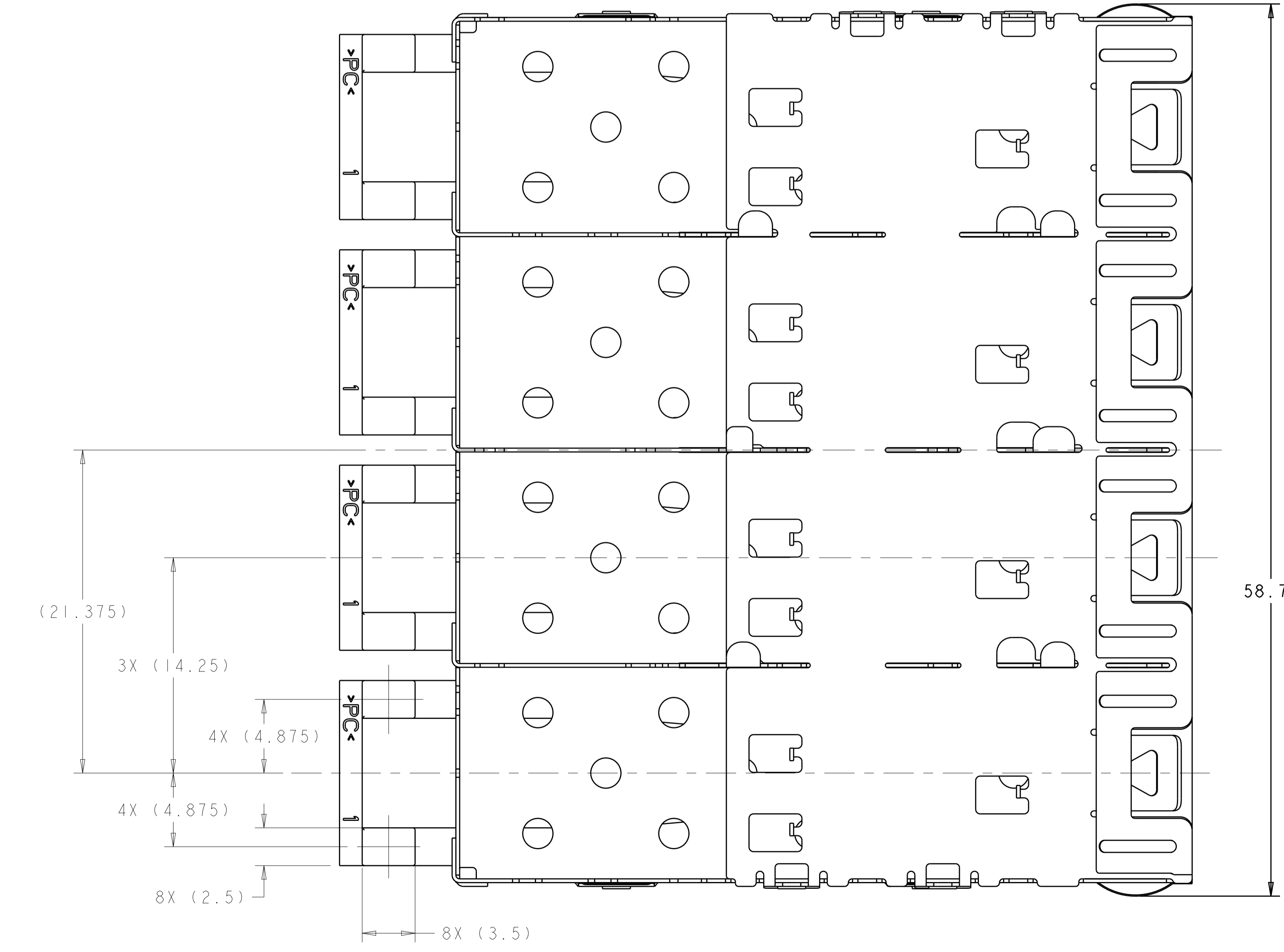
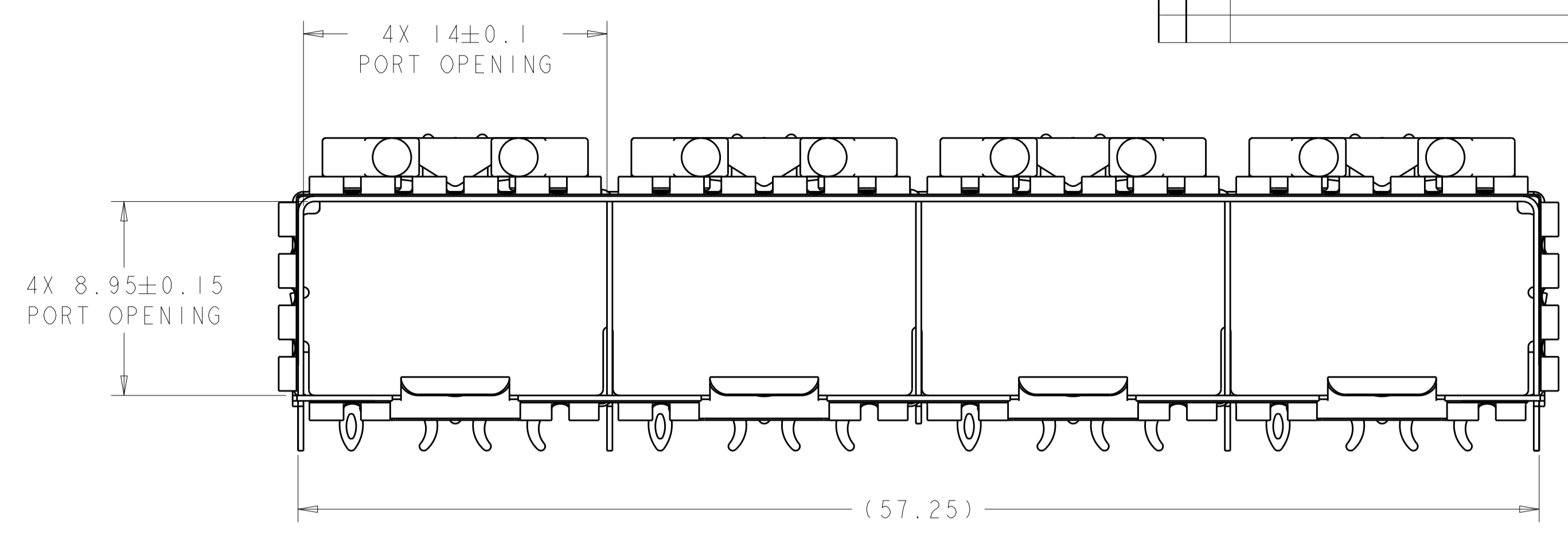
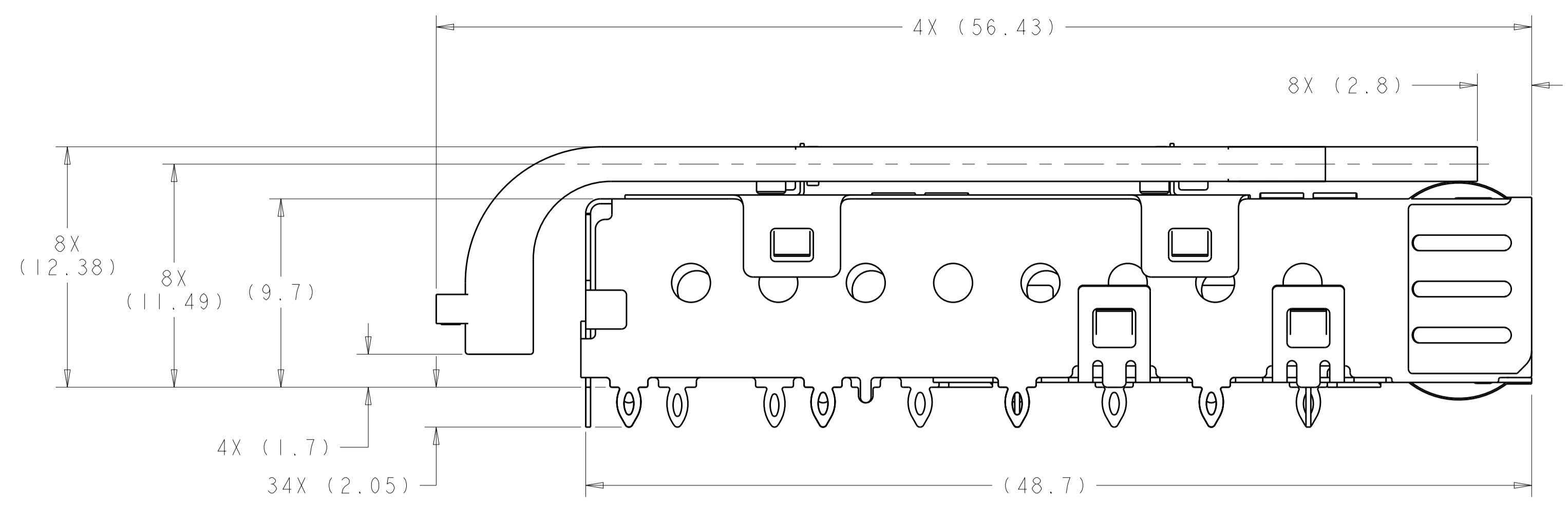
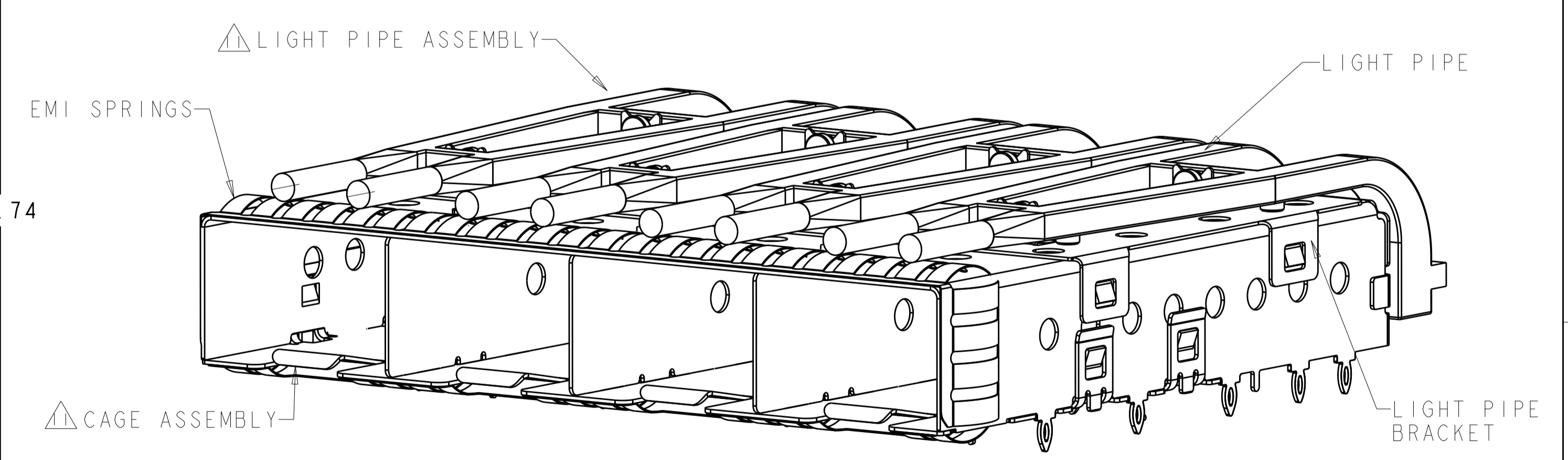


LOC		DIST		REVISIONS			
GP	00	P	LTN	DESCRIPTION	DATE	DWN	APVD
		A		RELEASED	26FEB2016	JW	SH



- △ MATERIAL:  
 CAGE ASSEMBLY: 0.25mm THICK NICKEL SILVER ALLOY  
 LIGHT PIPE BRACKET: STAINLESS STEEL  
 LIGHT PIPE: POLYCARBONATE, CLEAR
- △ FINISH:  
 SPRINGS: MINIMUM OF 0.8um TIN PLATE OVER A MINIMUM OF 0.8um NICKEL UNDERPLATE.  
 NON-PLATED EDGES PERMISSIBLE.
- △ PADS AND VIAS CHASSIS GROUND.
- △ DATUM AND BASIC DIMENSION ESTABLISHED BY CUSTOMER.
- 5. MATES WITH SFP MSA COMPLIANT TRANSCEIVERS.
- 6. INTERPRETATION OF DATUM REFERENCE FRAME IN ACCORDANCE WITH SECT 4.4.1.1 OF ASME Y14.5M-1994.
- △ REFERENCE APPLICATION SPEC. 114-13120, HOLE A, FOR RECOMMENDED DRILL HOLE DIAMETER AND PLATING THICKNESS.
- △ REFERENCE APPLICATION SPEC. 114-13120, HOLE B, FOR RECOMMENDED DRILL HOLE DIAMETER AND PLATING THICKNESS.
- △ HOLE PATTERN REPEATS FOR EACH PORT. SPACING BETWEEN PORTS IS 14.25mm.
- △ MINIMUM PC BOARD THICKNESS:  
 SINGLE SIDED = 1.50  
 DOUBLE SIDED = 2.25
- △ LIGHT PIPE ASSEMBLY SHIPPED UNASSEMBLED TO CAGE ASSEMBLY. CAGE ASSEMBLY TO BE PRESSED INTO THE PCB PRIOR TO ATTACHING THE LIGHT PIPE ASSEMBLY TO THE CAGE.
- 12. CERTAIN MATING TRANSCEIVERS MAY REQUIRE ADDITIONAL PCB THICKNESS THAT WOULD BE DETERMINED BY THE CUSTOMER.
- 13. PRODUCT COMPLIES WITH SPECIFICATION SFF-8433 IMPROVED PLUGGABLE FROM FACTOR FOR SFP+ GANGED CAGES.

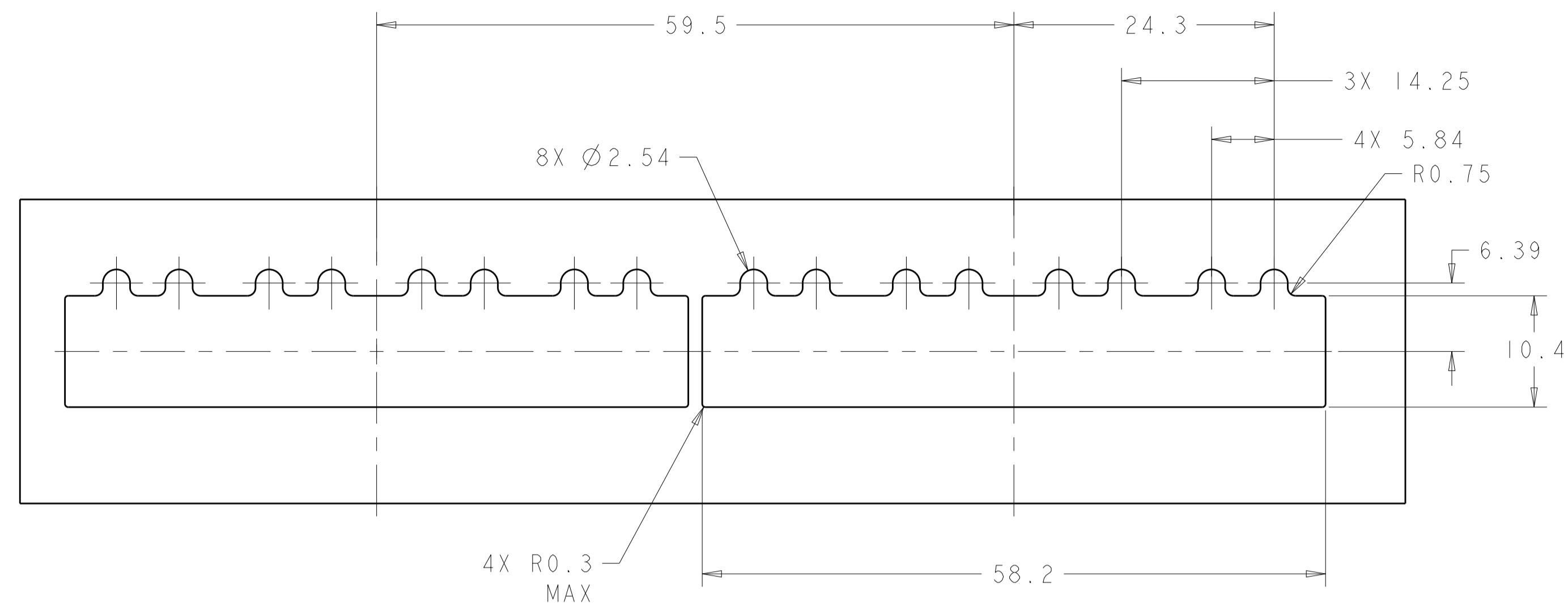


2170030-1  
 FINISHED ASSEMBLY  
 SCALE 4:1

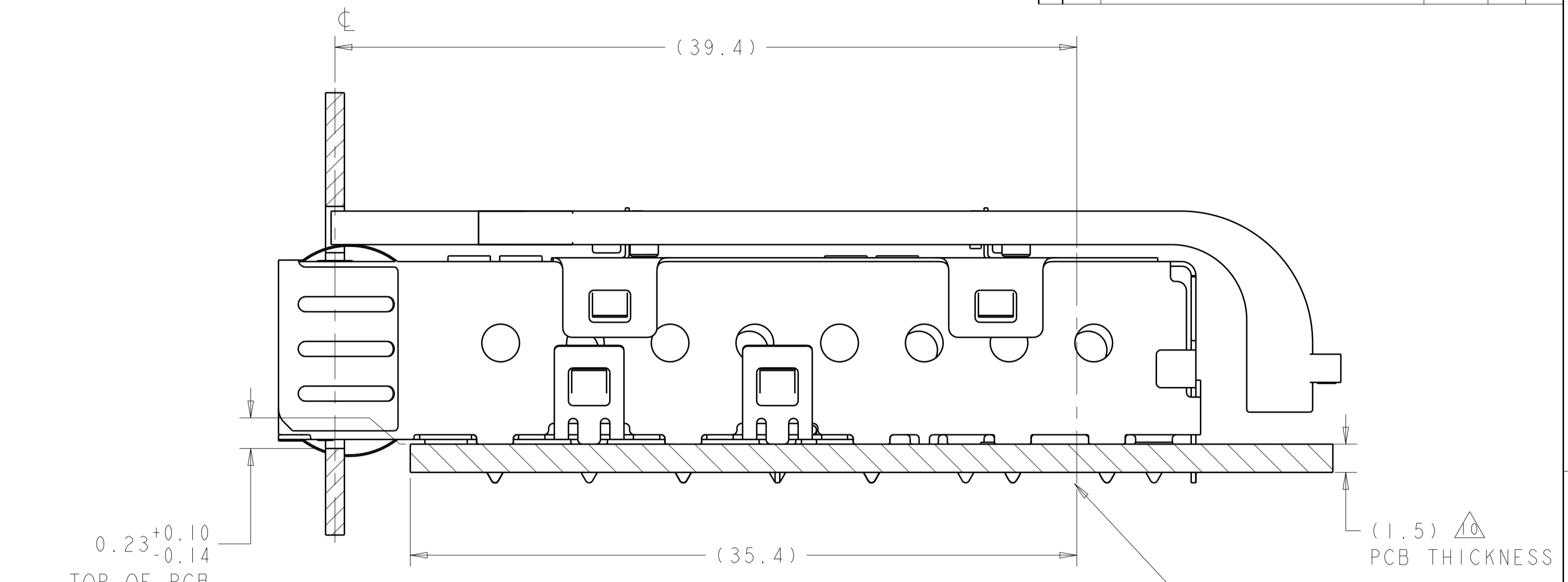
2170030-1  
 PART  
 NUMBER

THIS DRAWING IS A CONTROLLED DOCUMENT.		DWN T. XUE	Z0DEC2010	<b>STE</b> TE Connectivity
DIMENSIONS: mm		CHK C. WANG	Z0DEC2010	
TOLERANCES UNLESS OTHERWISE SPECIFIED:		APVD C. WANG	Z0DEC2010	NAME SFP+ 1X4 CAGE ASSEMBLY PRESS FIT, EXTERNAL EMI SPRINGS WITH ULTRA LOW PROFILE LIGHT PIPES
0 PLC ±0.1 1 PLC ±0.1 2 PLC ±0.1 3 PLC ±0.1 4 PLC ±0.1 ANGLES ±1°		PRODUCT SPEC 108-2364	APPLICATION SPEC 114-13120	
MATERIAL		FINISH	WEIGHT	SIZE A100779
CUSTOMER DRAWING		SCALE 5:1	SHEET 1	OF 4

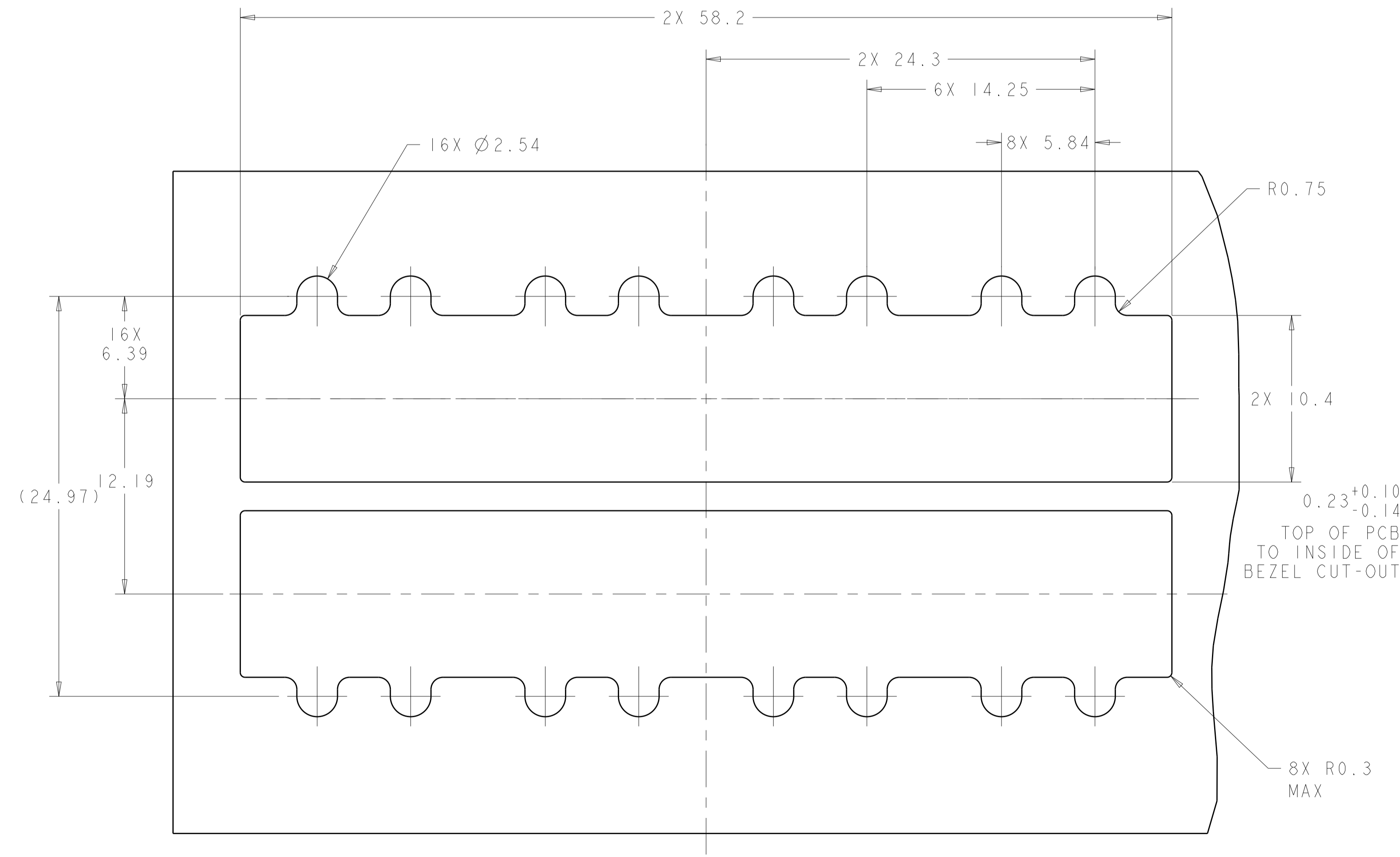
LOC		DIST		REVISIONS			
GP	00	P	LTN	DESCRIPTION	DATE	DMN	APVD
		-		SEE SHEET 1			



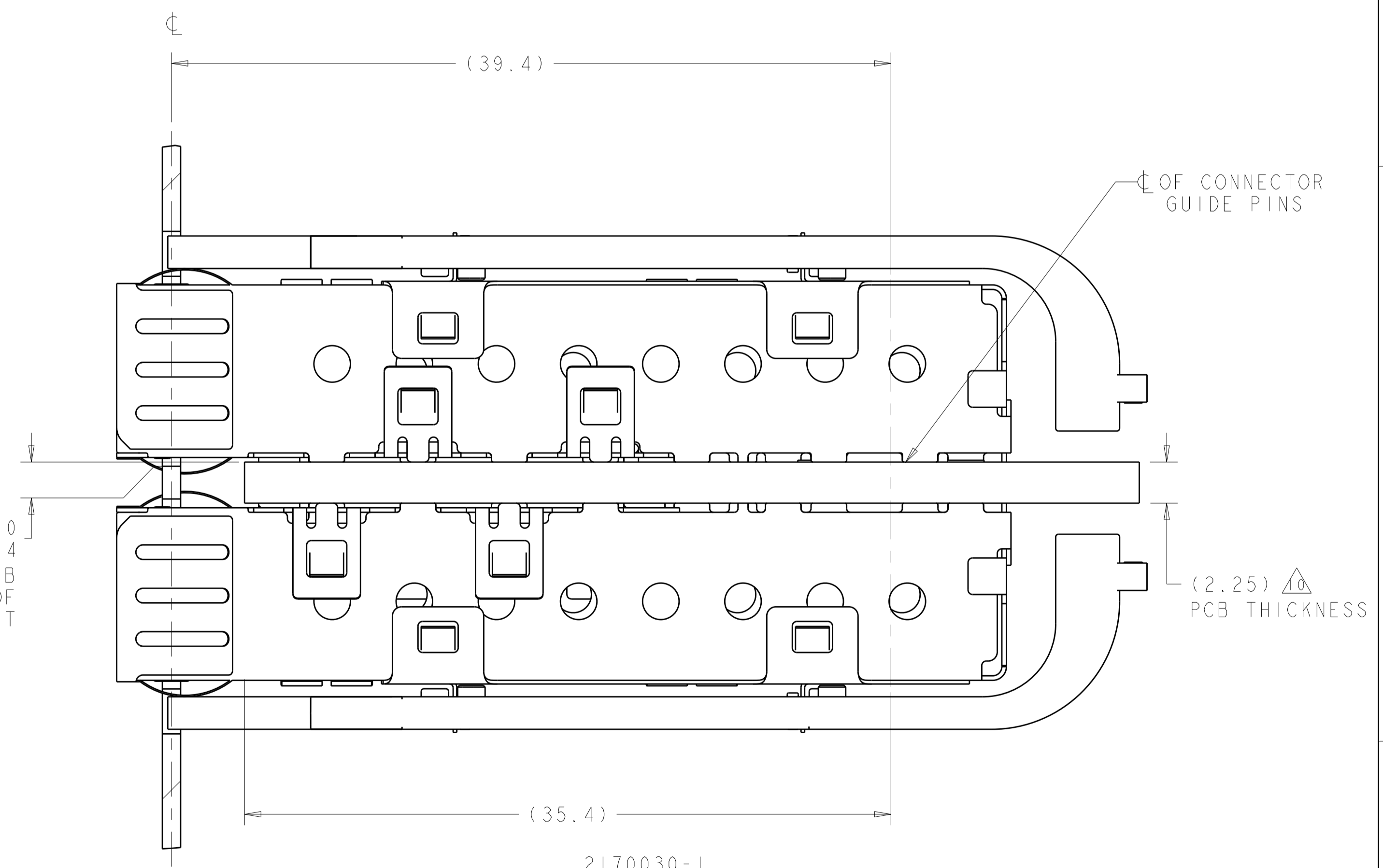
RECOMMENDED BEZEL CUT-OUT  
 SINGLE SIDED APPLICATIONS  
 SCALE 5:2



2170030-1  
 MOUNTED ON PC BOARD  
 SHOWN THRU RECOMMENDED BEZEL



RECOMMENDED BEZEL CUT-OUT  
 BELLY TO BELLY APPLICATIONS



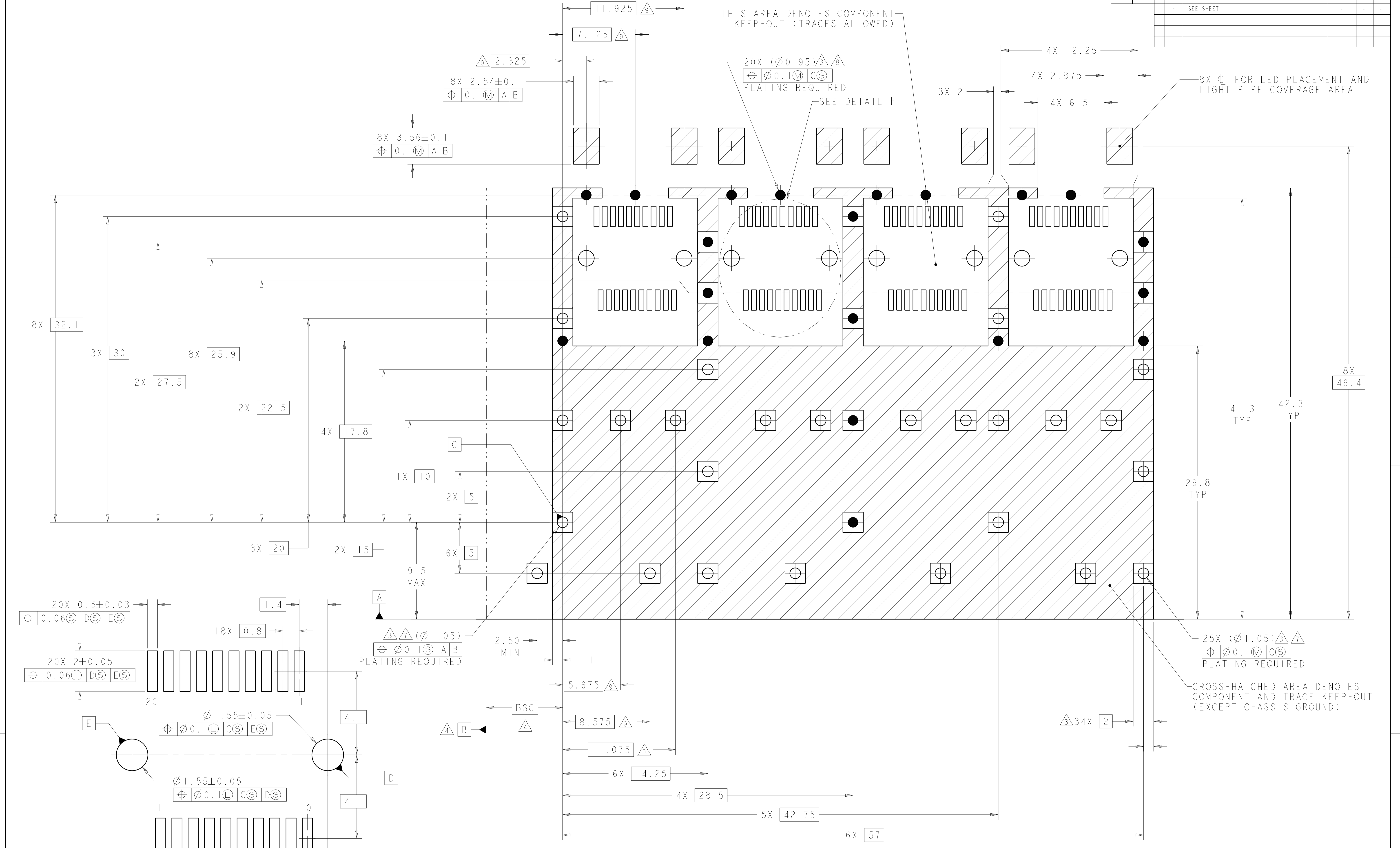
2170030-1  
 MOUNTED BELLY TO BELLY ON PC BOARD  
 SHOWN THRU RECOMMENDED BEZEL

THIS DRAWING IS A CONTROLLED DOCUMENT.		DMN T. XUE	Z0DEC2010	<b>STE</b> TE Connectivity
DIMENSIONS:		CHK C. WANG	Z0DEC2010	
mm	TOLERANCES UNLESS OTHERWISE SPECIFIED:	APVD C. WANG	Z0DEC2010	NAME SFP+ 1X4 CAGE ASSEMBLY PRESS FIT, EXTERNAL EMI SPRINGS WITH ULTRA LOW PROFILE LIGHT PIPES
	0 PLC ±0.1	PRODUCT SPEC	108-2364	
	1 PLC ±0.1	APPLICATION SPEC	114-13120	
	2 PLC ±0.1	WEIGHT		
	3 PLC ±0.1	CUSTOMER DRAWING	SCALE 5:1	SHEET 2 OF 4
	4 PLC ±0.1			REV A
	ANGLES ±1°			
MATERIAL	FINISH			

LOC	DIST	REV	DATE	OWN	APVD
GP	00				

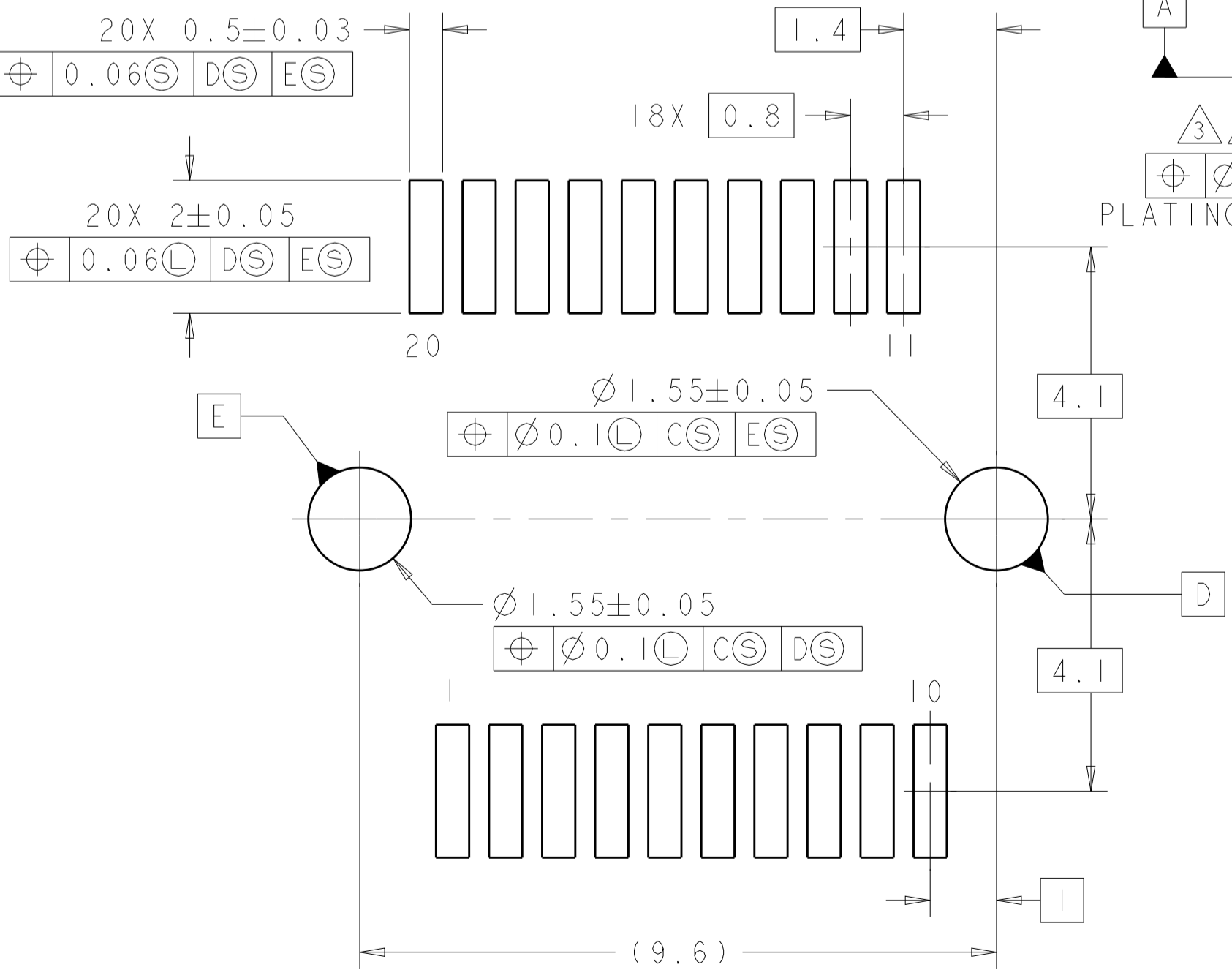
REVISIONS					
REV	DATE	DESCRIPTION	BY	CHK	APP
-	-	SEE SHEET 1	-	-	-



THIS AREA DENOTES COMPONENT KEEP-OUT (TRACES ALLOWED)

20X (∅0.95)∠3∠8  
 ∅0.1∩CS  
 PLATING REQUIRED  
 SEE DETAIL F

8X ∅ FOR LED PLACEMENT AND LIGHT PIPE COVERAGE AREA



DETAIL F  
 RECOMMENDED PT CONNECTOR LAYOUT  
 4X INDIVIDUALLY  
 SCALE 12:1

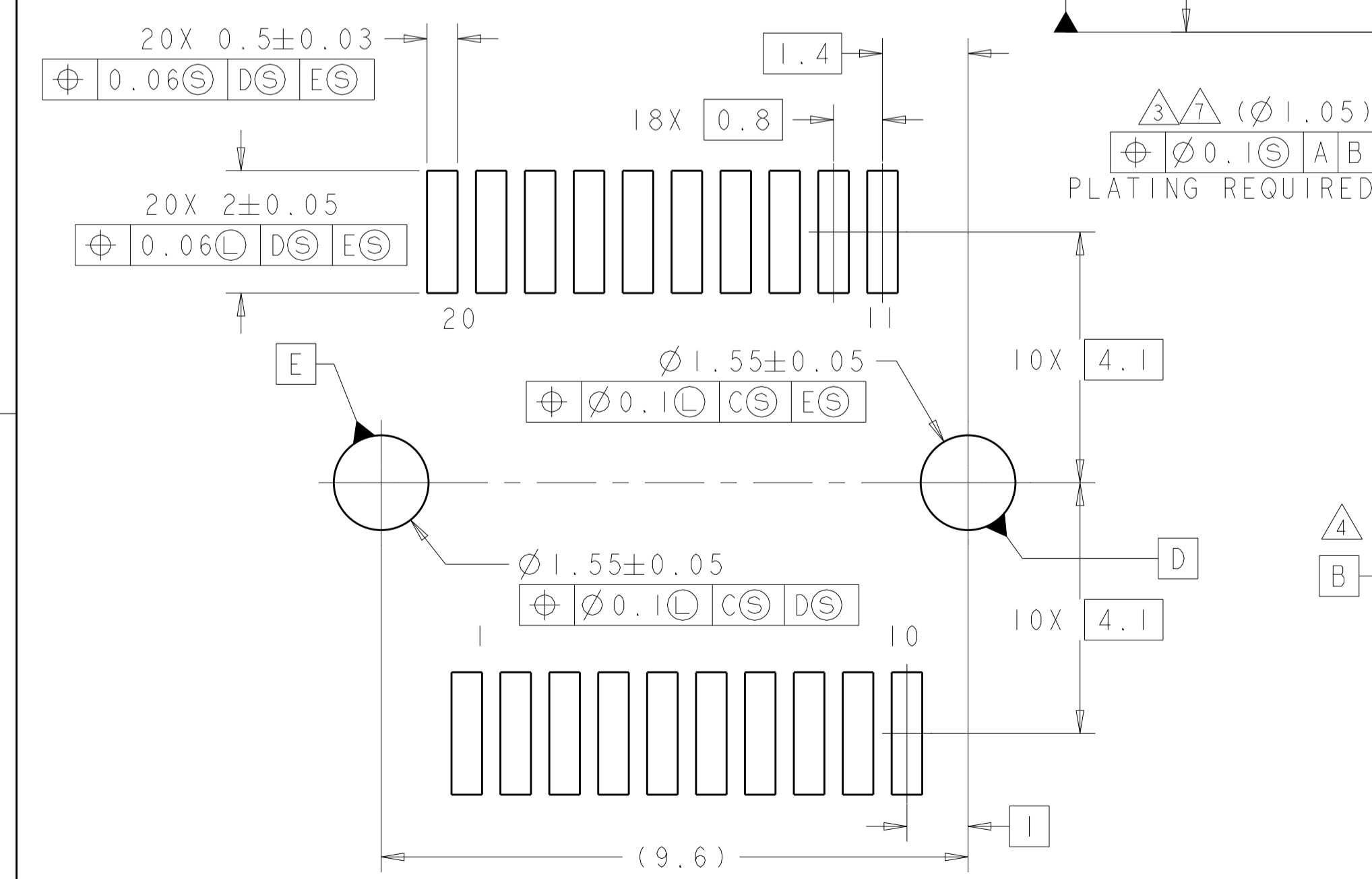
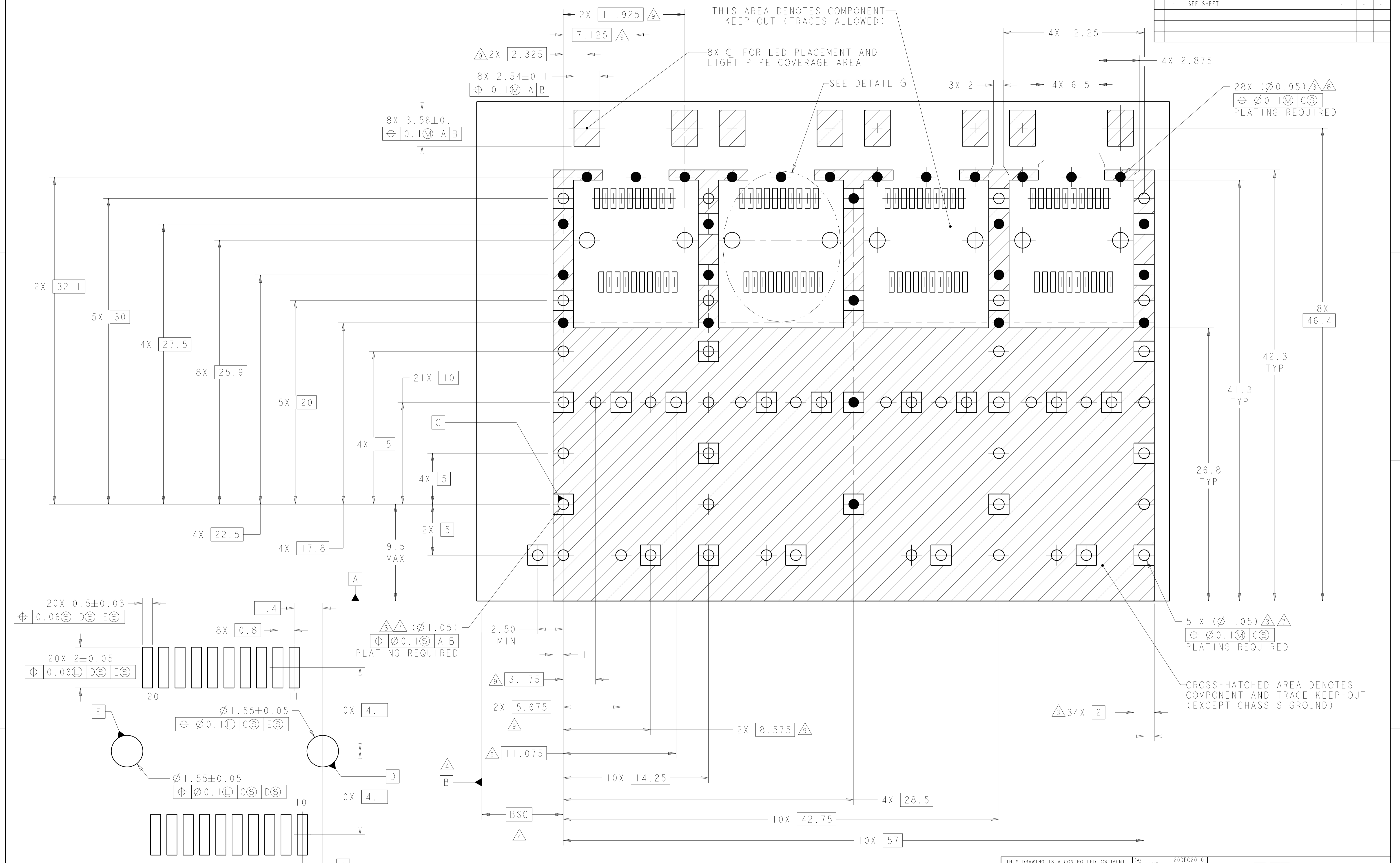
25X (∅1.05)∠3∠8  
 ∅0.1∩CS  
 PLATING REQUIRED

CROSS-HATCHED AREA DENOTES COMPONENT AND TRACE KEEP-OUT (EXCEPT CHASSIS GROUND)

RECOMMENDED PCB CONFIGURATION WITH KEEP-OUT AREAS  
 SINGLE SIDED APPLICATIONS  
 SCALE 6:1

THIS DRAWING IS A CONTROLLED DOCUMENT.		OWN: T. XUE	Z0DEC2010	TE Connectivity
DIMENSIONS: mm		CHK: C. WANG	Z0DEC2010	
TOLERANCES UNLESS OTHERWISE SPECIFIED:		APVD: C. WANG	Z0DEC2010	NAME: SFP+ 1X4 CAGE ASSEMBLY PRESS FIT, EXTERNAL EMI SPRINGS WITH ULTRA LOW PROFILE LIGHT PIPES
0 PLC ±0.1		PRODUCT SPEC	108-2364	
1 PLC ±0.1		APPLICATION SPEC	114-13120	
2 PLC ±0.1		WEIGHT	-	
3 PLC ±0.1		SCALE	5:1	SHEET 3 OF 4
4 PLC ±0.1		CUSTOMER DRAWING	A100779C=2170030	
ANGLES ±1°				REV A

LOC		DIST		REVISIONS			
GP	00	P	LTN	DESCRIPTION	DATE	OWN	APVD
		-	-	SEE SHEET 1	-	-	-



DETAIL G  
 RECOMMENDED PT CONNECTOR LAYOUT  
 8X INDIVIDUALLY  
 SCALE 12:1

RECOMMENDED PCB CONFIGURATION  
 WITH KEEP-OUT AREAS  
 BELLY TO BELLY APPLICATIONS  $\Delta$   
 SCALE 6:1

THIS DRAWING IS A CONTROLLED DOCUMENT.		OWN T. XUE	Z0DEC2010	TE Connectivity
DIMENSIONS:		CHK C. WANG	Z0DEC2010	
TOLERANCES UNLESS OTHERWISE SPECIFIED:		APVD C. WANG	Z0DEC2010	NAME SFP+ 1X4 CAGE ASSEMBLY PRESS FIT, EXTERNAL EMI SPRINGS WITH ULTRA LOW PROFILE LIGHT PIPES
mm		PRODUCT SPEC		
0 PLC $\pm 0.1$ 1 PLC $\pm 0.1$ 2 PLC $\pm 0.1$ 3 PLC $\pm 0.1$ 4 PLC $\pm 0.1$ ANGLES $\pm 0.1$		APPLICATION SPEC		
MATERIAL		114-13120		
FINISH		WEIGHT		SIZE A100779
		CUSTOMER DRAWING		SCALE 5:1 SHEET 4 OF 4 REV A

Компания «Life Electronics» занимается поставками электронных компонентов импортного и отечественного производства от производителей и со складов крупных дистрибьюторов Европы, Америки и Азии.

С конца 2013 года компания активно расширяет линейку поставок компонентов по направлению коаксиальный кабель, кварцевые генераторы и конденсаторы (керамические, пленочные, электролитические), за счёт заключения дистрибьюторских договоров

Мы предлагаем:

- Конкурентоспособные цены и скидки постоянным клиентам.
- Специальные условия для постоянных клиентов.
- Подбор аналогов.
- Поставку компонентов в любых объемах, удовлетворяющих вашим потребностям.
- Приемлемые сроки поставки, возможна ускоренная поставка.
- Доставку товара в любую точку России и стран СНГ.
- Комплексную поставку.
- Работу по проектам и поставку образцов.
- Формирование склада под заказчика.
- Сертификаты соответствия на поставляемую продукцию (по желанию клиента).
- Тестирование поставляемой продукции.
- Поставку компонентов, требующих военную и космическую приемку.
- Входной контроль качества.
- Наличие сертификата ISO.

В составе нашей компании организован Конструкторский отдел, призванный помогать разработчикам, и инженерам.

Конструкторский отдел помогает осуществить:

- Регистрацию проекта у производителя компонентов.
- Техническую поддержку проекта.
- Защиту от снятия компонента с производства.
- Оценку стоимости проекта по компонентам.
- Изготовление тестовой платы монтаж и пусконаладочные работы.



Тел: +7 (812) 336 43 04 (многоканальный)  
Email: [org@lifeelectronics.ru](mailto:org@lifeelectronics.ru)