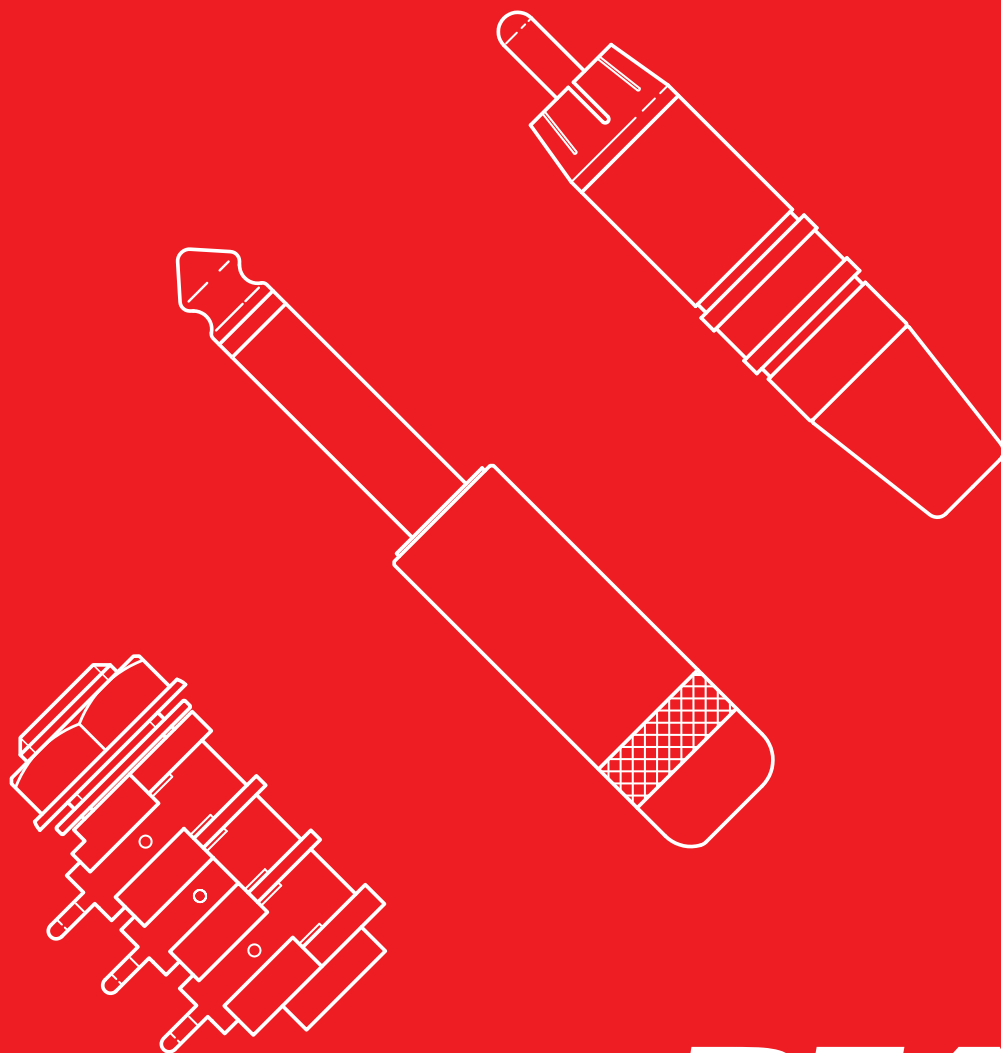




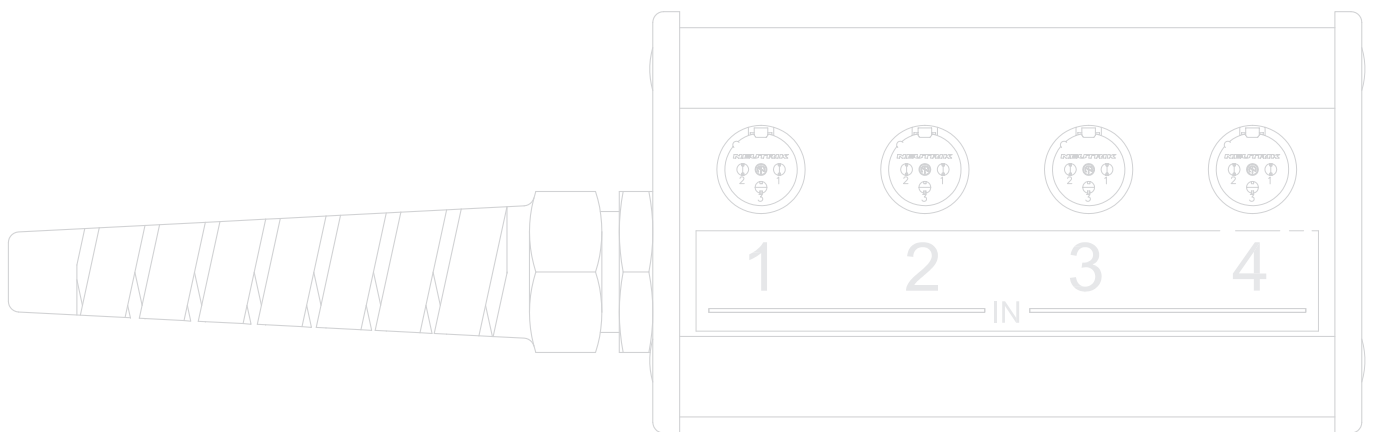
# Product Guide | 2010



**REAN**  
REAN a brand of Neutrik AG



Content	Page
TINY xlr .....	4
Plugs .....	6
Jacks .....	8
Phono "RCA" & DIN Connectors .....	10
Patch Box & Stage Box .....	12
Dual Banana Plug .....	14
Technical Data .....	15



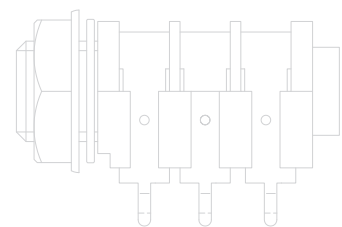
## REAN

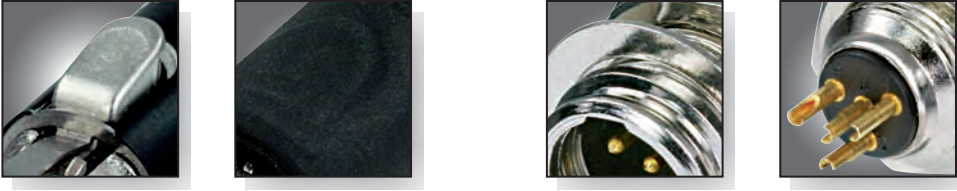
With the brand REAN, the world's leading supplier of professional audio and video connectors – Neutrik AG – offers another interesting product range.

Excellent cost-performance ratio, attractive design and reliable functionality are the strengths of REAN.

Based on long-time know-how audio and video connectors for professional applications are developed and produced on up to date production facilities. An efficient logistics system and a global sales network make a high availability and short delivery times possible. The REAN product range is an alternative solution for cost sensitive applications.

REAN a brand of Neutrik AG





## TINY xlr



RT3FC-B



RT4FC-B-W

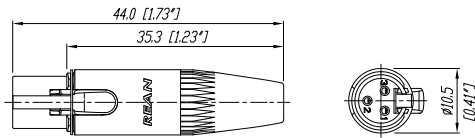


RT3MP

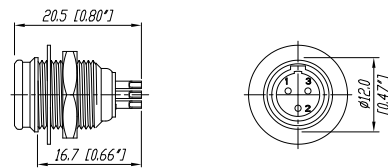
- 3- and 4-pole version available
- Easy to assemble
- Robust metal housing with best flex relief
- Shielded system – high noise immunity and EMI protection
- Intuitive and rugged locking mechanism provides secure locking system

- Millionfold proven chuck type strain relief
- Keyed insert and strain relief to avoid mispositioning / rotation of insert respectively cable
- Optional sealing boot (patent pending) for water / sweat protection if mated with RT\*MP
- Watertight chassis connector, even in unmated condition

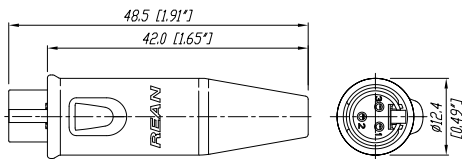
RT3FC-B



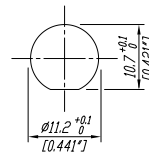
RT3MP



RT3FC-B-W



Panel Cutout



## Ordering Information

Type No.	Description
<b>Cable connector</b>	
RT3FC-B	3-pole TINY cable connector, black metal shell, gold plated contacts
RT4FC-B	4-pole TINY cable connector, black metal shell, gold plated contacts
RT*FC-B-D	TINY cable connector, black metal shell, gold plated contacts; bulk packed, to be ordered in multiples of 100 pcs.
<b>Cable connector water resistant</b>	
RT3FC-B-W	3-pole TINY cable connector, black metal shell, water resistant, gold plated contacts
RT4FC-B-W	4-pole TINY cable connector, black metal shell, water resistant, gold plated contacts
RT*FC-B-W-D	TINY cable connector, black metal shell, water resistant, gold plated contacts; bulk packed, to be ordered in multiples of 100 pcs.
<b>Chassis connector</b>	
RT3MP	3-pole TINY chassis connector, nickel metal housing, gold plated contacts, max. panel thickness: 6 mm
RT4MP	4-pole TINY chassis connector, nickel metal housing, gold plated contacts, max. panel thickness: 6 mm
RT*MP-D	TINY chassis connector, nickel metal housing, gold plated contacts, max. panel thickness: 6 mm; bulk packed, to be ordered in multiples of 100 pcs.

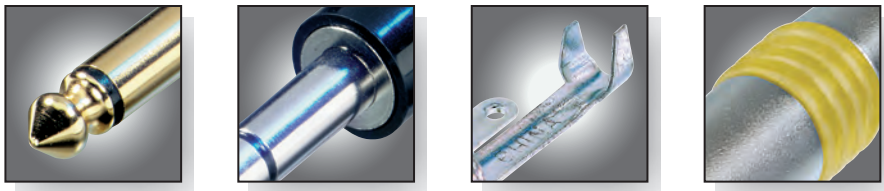
## Specification

### Cable connector RT\*FC-B

### Chassis connector RT\*MP

	Cable connector RT*FC-B	Chassis connector RT*MP
<b>Electrical</b>		
Rated current per contact	< 5 A	< 5 A
Contact resistance	< 5 mΩ	< 5 mΩ
Insulation resistance	> 1 GΩ	> 1 GΩ
Dielectric strength	> 500 V rms	> 500 V rms
<b>Mechanical</b>		
Lifetime	> 1'000 cycles	> 1'000 cycles
Cable O.D. range	2.0 - 4.5 mm	-
Wiring	solder contactt	solder contactt
Max. Wire size	0.22 mm <sup>2</sup> / 24 AWG	0.22 mm <sup>2</sup> / 24 AWG
<b>Material</b>		
Bushing	ABS	-
Contacts	bronze	brass
Contact plating	Au plated	Au plated
Insert	PA 6.6 30% GR	PA 6.6 30% GR
Shell (housing)	ZnAl4Cu1	ZnAl4Cu1
Shell plating	black	nickel
Strain relief	PA6	-
Protection boot	EPDM	-
<b>Environment</b>		
Temperature	-30°C to +85°C	-30°C to +85°C
Solderability	complies with IEC68-2-20	complies with IEC68-2-20

# Plugs



## 1/4" and 3.5 mm phone plugs



NYS 204



NYS 208



NYS 224G

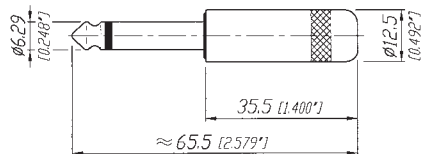


NYS 224C-6

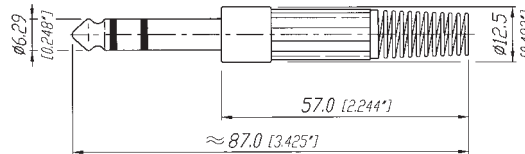
- Commercial 1/4" plugs and adapters
- All connectors according to EIA RS-453 / IEC 60603-11
- Short and long turned brass handles
- Plastic handle with flexible strain relief
- Heavy duty cable clamp for best strain relief

- Available in nickel, gold and black plating
- Large cable outlet and solder tabs
- Right angle version
- "Silent switch" on plug finger helps eliminate "pop" during insertion and withdrawal

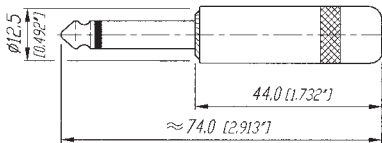
NYS 201



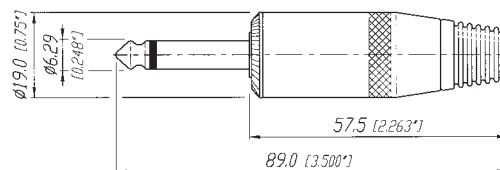
NYS 204



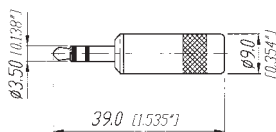
NYS 224



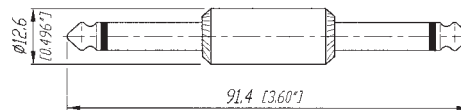
NYS 225



NYS 231

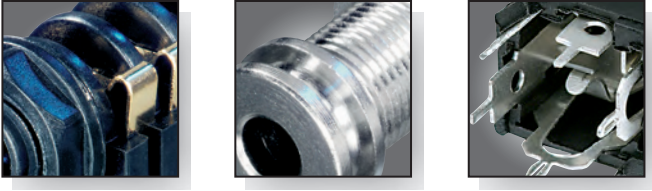


NYS 237



## Ordering Information

Type No.	Mono 2-pole	Stereo 3-pole	Description	Cable O.D.
<b>1/4" plug short handle</b>				
NYS 201	•		Short turned brass handle	6 mm
NYS 202		•	Short turned brass handle	6 mm
<b>1/4" plug plastic handle</b>				
NYS 203	•		Plastic handle with flexible strain relief	6 mm
NYS 204		•	Plastic handle with flexible strain relief	6 mm
<b>1/4" plug right angle</b>				
NYS 207	•		Metal housing, plastic bushing	6 mm
NYS 207-2	•		Metal housing, red cover & plastic bushing	6 mm
NYS 208		•	Metal housing, plastic bushing	6 mm
<b>1/4" plug long handle</b>				
NYS 224	•		Long polished diecast handle, no rivet	6 mm
NYS 224AG	•		With gold plated handle and contacts	6 mm
NYS 224BG	•		With black metal handle, gold plated contacts	6 mm
NYS 224G	•		With gold plated contact	6 mm
NYS 224GT	•		With gold plated tin contacts	6 mm
NYS 224L	•		With large cable outlet	8 mm
NYS 224S	•		With tip switched to ground if not inserted (silent)	6 mm
NYS 224C-*	•		Diecast handle with coloured coding ring & rubber flex relief	6 mm
NYS 228		•	Stereo version of 224	6 mm
NYS 228BG		•	With black metal handle, gold plated contacts	6 mm
NYS 228G		•	With gold plated contacts	6 mm
NYS 228GT		•	With gold plated tip contact	6 mm
*) 0 - black, 2 - red, 4 - yellow, 5 - green, 6 - blue				
<b>1/4" plug with large shell for speaker cable</b>				
NYS 225	•		Large metal handle, rubber bushing	8 mm
NYS 225B	•		With black metal handle	8 mm
NYS 225L	•		With large cable outlet	9 mm
NYS 225S	•		With tip switched to ground if not inserted (silent)	8 mm
<b>1/4" plug adapter</b>				
NYS 237	•		Mono plug adapter to mate standard 1/4" jacks, full metal	
NYS 239		•	Stereo plug adapter to mate standard 1/4" jacks, full metal	
<b>3.5 mm plug</b>				
NYS 226	•		Metal handle with crimp strain relief	4 mm
NYS 226B	•		With black metal handle	4 mm
NYS 226BG	•		With black metal handle, gold plated contacts	4 mm
NYS 226G	•		With gold plated contacts	4 mm
NYS 226L	•		With large cable outlet	6 mm
NYS 227		•	3.5 mm plug to 1/4" stereo jack, all metal	-
NYS 231		•	Metal handle with crimp strain relief	4 mm
NYS 231B		•	With black metal handle	4 mm
NYS 231BG		•	With black metal handle, gold plated contacts	4 mm
NYS 231G		•	With gold plated contacts	4 mm
NYS 231L		•	With large cable outlet	6 mm



## 1/4" phone jacks



NYS 216  
Horizontal Jack



NYS 2202  
Long Bushing



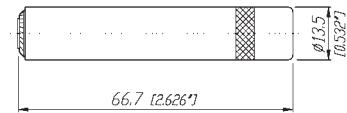
NYS 230  
Open Jack



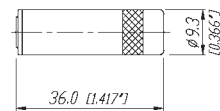
NYS 234  
Vertical Jack

- Robust and reliable jacks in metal or plastic housing
- Horizontal and vertical PCB-mount
- Extra long-threaded bushing for thick panel and guitar bodies
- Plastic nut or chrome ferrule nut
- Kinked solder pins secure jack to PCB

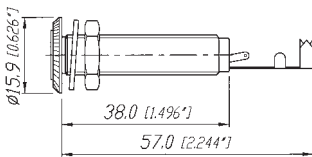
NYS 2202P



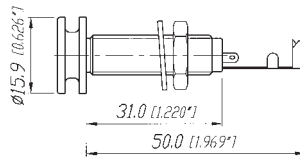
NYS 240



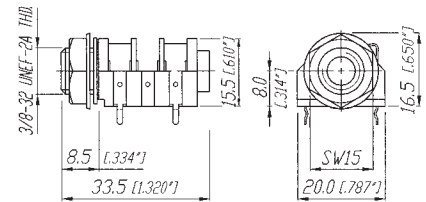
NYS 220



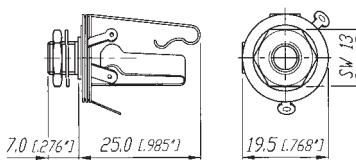
NYS 221



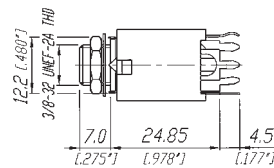
NYS 2162



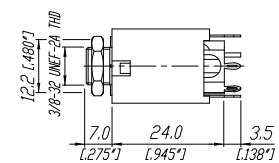
NYS 230



NYS 232



NYS 234





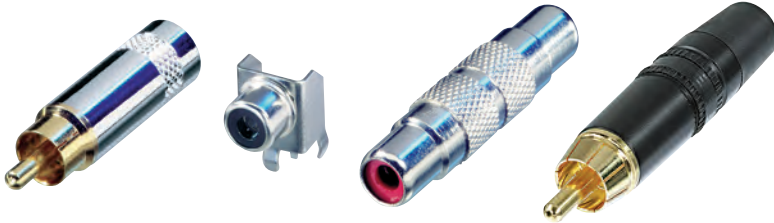
## Ordering Information

Type No.	Mono 2-pole	Stereo 3-pole	Description	Distance to PCB
<b>1/4" long bushing jacks</b>				
NYS 2202	•		Jack for thick panels, long-threaded bushing with washer and nut, full metal	–
NYS 2203		•	Jack for thick panels, long-threaded bushing with washer and nut, full metal	–
NYS 221		•	Jack with special design head for guitar strap, for thick panels, long-threaded bushing with washer and nut, full metal	–
<b>Cable jacks</b>				
NYS 2202P	•		1/4" mono cable jack with metal handle, max. cable O.D. 6.0 mm	–
NYS 2203P		•	1/4" stereo cable jack with metal handle, max. cable O.D. 6.0 mm	–
NYS 240		•	3.5 mm stereo cable jack with metal handle, max. cable O.D. 4 mm	–
NYS 240BG		•	With black metal handle, gold plated contacts, max. cable O.D. 4 mm	–
NYS 240L		•	With large cable outlet, max. cable O.D. 6.0 mm	–
<b>1/4" horizontal jacks (all contacts switched)</b>				
NYS 212		•	Plastic housing with washer and nut, solder tap version	–
NYS 2122	•		Plastic housing with washer and nut, solder tap version	–
NYS 215		•	With chrome ferrule nut	8.2 mm
NYS 2152	•		With chrome ferrule nut	8.2 mm
NYS 2152G	•		With chrome ferrule nut and gold contacts	8.2 mm
NYS 2152G-DIU	•		Solder tap version with chrome ferrule nut, gold contacts, bulk packaging	–
NYS 216		•	Plastic housing with washer and nut	8.2 mm
NYS 2162	•		Plastic housing with washer and nut	8.2 mm
NYS 216G		•	With gold contact	8.2 mm
NYS 218		•	With extra long contacts	15.0 mm
NYS 2182	•		With extra long contacts	15.0 mm
NYS 219		•	With long contacts	12.5 mm
NYS 2192	•		With long contacts	12.5 mm
<b>1/4" open jacks</b>				
NYS 229	•		2 contacts, with washer and nut, panel thickness 3.5 mm	–
NYS 229L	•		2 contacts, with longer threaded nose, washer and nut, panel thickness 6.5 mm, with 0.205" faston tabs	–
NYS 230		•	3 contacts, with washer and nut, panel thickness 3.5 mm	–
<b>1/4" vertical jacks</b>				
NYS 232		•	Plastic housing, metal washer and nut, with tip and ring normalling contacts	24.85 mm
NYS 234		•	Plastic housing, metal washer and nut, with tip and ring normalling contacts	24.00 mm
NYS 2343		•	Plastic housing, metal washer and nut, no normalling contacts	24.00 mm
<b>Phone jack adapter</b>				
NYS 236	•		1/4" jack adapter to mate with standard 1/4" plug, full metal	–
NYS 238		•	1/4" jack adapter to mate with standard 1/4" plug, full metal	–



## Phono ("RCA/Cinch")

## DIN Connectors



NYS 352G

NYS 354

NYS 355

NYS 373-6



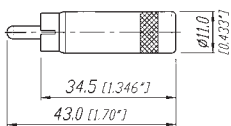
NYS 321

NYS 324

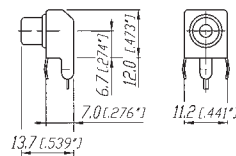
- Heavy duty phono plugs
- All metal
- Cable O.D. up to 6 mm (0.25")
- Cable clamp or chuck type strain relief
- Phono receptacle for PCB-mounting
- Phono to phono female adapter

- Male cable connectors with turned brass shell
- Flexible bushing
- Gold or silver-plated-non-tarnishing contacts
- Heavy duty cable clamp
- Female receptacle, stamped housing
- Complete shielding with ground contact  
Nickel-plated shell

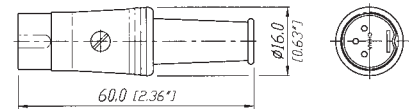
**NYS 352**



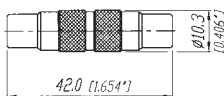
**NYS 354**



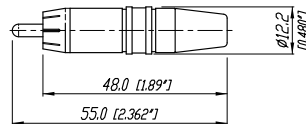
**NYS 321**



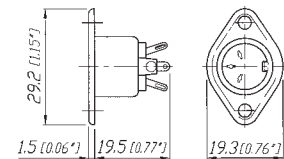
**NYS 355**



**NYS 373-\***



**NYS 324**



## Ordering Information

Type No.	Description	Cable O.D.
<b>Phono ("RCA/Cinch")</b>		
NYS 352	Phono plug	7.2 mm
NYS 352AG	Phono plug, all gold plated	7.2 mm
NYS 352B	Phono plug with black metal handle	7.2 mm
NYS 352BG	Phono plug with gold plated contacts and black metal handle	7.2 mm
NYS 352G	Phono plug with gold plated contacts	7.2 mm
NYS 354	Phono receptacle, PCB-mount, max. panel thickness 1.2 mm	-
NYS 355	Phono to phono female adapter	-
NYS 367-*	Phono chassis mount socket, gold plated contacts, color coding	-
NYS 372P	Phono jack with nickel plated contacts and handle	7.2 mm
NYS 372P-BG	Phono jack with gold plated contacts and black plated handle	7.2 mm
NYS 373-*	Phono plug with gold plated contacts, black chromium shell, chuck type strain relief	3.0-6.1 mm
	*) 0 - black, 2 - red, 4 - yellow, 5 - green, 6 - blue, 9 - white	
<b>DIN male cable connector</b>		
NYS 321	3-pole, silver plated contacts	5.0 mm
NYS 321G	3-pole with gold plated contacts	5.0 mm
NYS 322	5-pole, silver plated contacts	5.0 mm
NYS 322G	5-pole with gold plated contacts	5.0 mm
NYS 322AG	5-pole with gold plated shell and contacts	5.0 mm
NYS 323	7-pole, silver plated contacts	5.0 mm
NYS 323G	7-pole with gold plated contacts	5.0 mm
<b>DIN female chassis connector</b>		
NYS 324	3-pole, silver plated contacts	-
NYS 325	5-pole, silver plated contacts	-
NYS 326	7-pole, silver plated contacts	-

# Patch Box & Stage Box



## Patch box



NYS-SSR-8

## Stage box



NSB2A-20/4



NSB2B-12/4

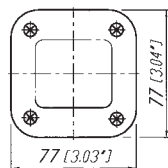
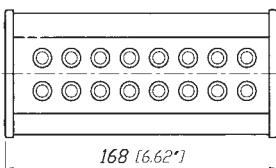


NSB1C-8/0

- "The Easy Way to Link your Audio System"
- 1/4" Patch box with 8 send/return modules (split print)
- Metal housing – reliable and robust
- Easy to assemble, simple to use

- Modular system for individual size and configuration
- Designed to be in an individual combination of connectors for "IN" and "OUT" and length
- Easy to assemble
- 3-pole XLR IDC receptacles eliminate stripping and tinning of wires
- Luminescent, self-adhesive labels for connector identification
- Extremely price competitive

### NYS SSR-8



## Ordering Information

(Supplied as disassembled set comprising of all hardware parts including plates, profiles, strain relief, endpieces and screws.)

### Patch box

NYS-SSR-8 1/4" patch box with 8 send/return moduls (split print)

### Stage box – type A

NSB1A-8/4 Length 1, 8 IN (female/send) and 4 OUT (male/return)  
 NSB2A-12/4 Length 2, 12 IN (female/send) and 4 OUT (male/return)  
 NSB2A-20/4 Length 2, 20 IN (female/send) and 4 OUT (male/return)  
 NSB3A-32/4 Length 3, 32 IN (female/send) and 4 OUT (male/return)

### Stage box – type B

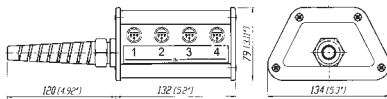
NSB1B-8/0 Length 1, 8 IN (female/send)  
 NSB2B-12/4 Length 2, 12 IN (female/send) and 4 OUT (male/return)  
 NSB2B-16/0 Length 2, 16 IN (female/send)  
 NSB3B-20/4 Length 3, 20 IN (female/send) and 4 OUT (male/return)

### Stage box – type C

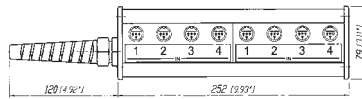
NSB1C-8/0 Length 1, 8 IN (female/send)  
 NSB2C-12/4 Length 2, 12 IN (female/send) and 4 OUT (male/return)  
 NSB3C-20/4 Length 3, 20 IN (female/send) and 4 OUT (male/return)

### Type A

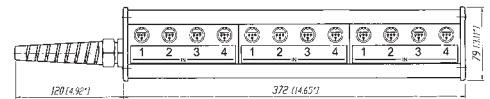
#### NSB1A



#### NSB2A

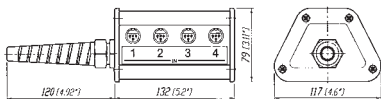


#### NSB3A

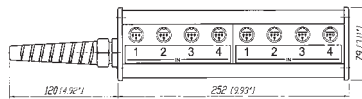


### Type B

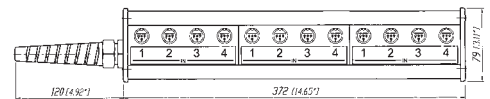
#### NSB1B



#### NSB2B

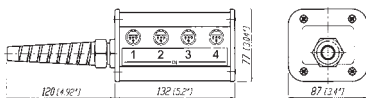


#### NSB3B

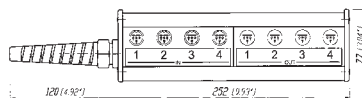


### Type C

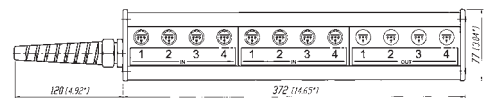
#### NSB1C



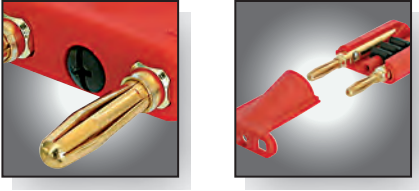
#### NSB2C



#### NSB3C



# Dual Banana Plug



## Dual banana plug



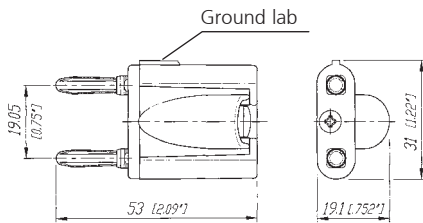
NYS 508-R



NYS 508-B

- Cable strain relief: teathed cable clamp featuring cable O.D. 6.0 - 10.5 mm
- Protection against electric shock: cable ends and plugs are completely covered in mated condition
- Gold plated contacts for tarnish resistance & long insertion life

### NYS 508-\*



## Ordering Information

Type No.	Description	Cable O.D.
Dual banana plug		
NYS 508-R	Dual banana plug, red housing	6.0 - 10.5 mm
NYS 508-B	Dual banana plug, black housing	6.0 - 10.5 mm

# Technical Data

## Specification

Electrical		Phone plugs	Phone jacks	Phono ("RCA/Cinch")	DIN connectors	Dual banana plug
Rated current	Depends on mating connector	•	•	•	•	20 A
Contact resistance	Depends on mating connector	•	•	•	•	–
Insulation resistance	≥ 1 GΩ	•	•	•	•	•
Dielectric strength	500 V dc	•	•	•	•	•

Mechanical						
Life cycles		5'000	5'000	5'000	1'000	5'000
Insertion / withdrawal force ≤ 20 N / ≥ 10 N		–	•	–	–	–
Cable O.D.	See ordering information	–	–	See ordering information	5 mm	6.0 - 10.5 mm
Panel thickness	–	–	See ordering information	–	–	–
Solderability complies with IEC68-2-20		•	•	•	•	–
Operating temperature		-25°C to +70°C	-25°C to +70°C	-25°C to +70°C	-25°C to +70°C	-25°C to +50°C

Material						
Housing/handle	- Brass Ni / Au / black plated	NYS 201/202/226/231	•	•	•	–
	- Zinc Diecast, Ni/black plated	•	–	–	–	–
	- Steel, Ni plated	–	–	–	NYS 324/325/326	–
Insulation	- Thermoplastic	•	•	•	•	•
Contacts	- Brass, Ni / Au plated	•	•	•	•	•
Strain relief	- Crimp type SnCe plated	•	–	•	–	–
	- Crimp type Zn plated	–	–	–	•	–
	- Chuck tye (POM)	–	–	NYS 373	–	–
	- Teethed cable clamp	–	–	–	–	•
Part number coding:	B .... black handle BG .... black handle, gold plated contacts	G .... gold plated contacts S .... silent switch		AG .... all gold, gold plated contacts and shell GT .... gold plated tip contact		

## Specification

1/4" patch box

Stage box

Electrical		1/4" patch box	Stage box
Rated current	Depends on mating connector	•	2 A
Contact resistance	Depends on mating connector	•	< 5 mΩ
Insulation resistance	≥ 1 GΩ	•	•
Dielectric strength	500 V dc	•	•

Mechanical			
Life cycles		> 10'000	> 1'000
Insertion / withdrawal force ≤ 20 N / ≥ 10 N		•	≤ 10 N / ≥ 10 N
Multicore cable O.D.		–	15 / 20 mm
Applicable wire size		–	0.22 mm <sup>2</sup> / 24 AWG and 0.14 mm <sup>2</sup> / 26 AWG
Operating temperature	-25°C to + 70°C	•	•

Material			
Housing		Aluminium	Aluminium
Quad plates		–	POM
End pieces	- Thermoplastic	•	•
Contacts	- Brass / Bronze	Ni plated	Au plated





A large gray rectangular area containing horizontal white lines, resembling a writing template or a placeholder for text. The lines are evenly spaced and extend across the width of the gray area.



A large gray rectangular area containing horizontal white lines, resembling a writing template or a placeholder for text. The lines are evenly spaced and extend across the width of the gray area.

**Liechtenstein (Headquarters)**

NEUTRIK AG, Im alten Riet 143, 9494 Schaan  
T +423 237 24 24, F +423 232 53 93, neutrik@neutrik.com

**Germany/Netherlands/Denmark/Austria**

Neutrik Vertriebs GmbH, Felix-Wankel-Strasse 1, 85221 Dachau  
T +49 8131 28 08 90, info@neutrik.de

**Great Britain**

Neutrik (UK) Ltd., Westridge Business Park, Cothey Way  
Ryde, Isle of Wight PO33 1 QT  
T +44 1983 811 441, sales@neutrik.co.uk

**France**

Neutrik France SARL, Rue du Parchamp 13, 92100 Boulogne-Billancourt  
T +33 1 41 31 67 50, info@neutrik.fr

**USA**

Neutrik USA Inc., 195 Lehigh Avenue, Lakewood, NJ 08701-4527  
T +1 732 901 94 88, info@neutrikusa.com

**Japan**

Neutrik Limited, Yusen-Higashinohonbashi-Ekimae Bldg., 3-7-19  
Higashinohonbashi, Chuo-ku, Tokyo 103  
T +81 3 3663 47 33, mail@neutrik.co.jp

**Hong Kong**

Neutrik Hong Kong LTD., Workshop 14, 16 Floor, Wah Wai Centre  
Nr. 38-40 Au Pui Wan Street, Shatin, New Territories  
T +852 2687 6055, neutrik@neutrik.com.hk

**China**

Ningbo Neutrik Electronics Co., Ltd., Shiqi Street, Yinxian Road West  
Fengjia Villiage, Yinzhou Area, Ningbo, Zhejiang; 315153  
T +86 574 88250488 800, neutrik@neutrik.com.cn

Компания «Life Electronics» занимается поставками электронных компонентов импортного и отечественного производства от производителей и со складов крупных дистрибьюторов Европы, Америки и Азии.

С конца 2013 года компания активно расширяет линейку поставок компонентов по направлению коаксиальный кабель, кварцевые генераторы и конденсаторы (керамические, пленочные, электролитические), за счёт заключения дистрибьюторских договоров

Мы предлагаем:

- Конкурентоспособные цены и скидки постоянным клиентам.
- Специальные условия для постоянных клиентов.
- Подбор аналогов.
- Поставку компонентов в любых объемах, удовлетворяющих вашим потребностям.
- Приемлемые сроки поставки, возможна ускоренная поставка.
- Доставку товара в любую точку России и стран СНГ.
- Комплексную поставку.
- Работу по проектам и поставку образцов.
- Формирование склада под заказчика.
- Сертификаты соответствия на поставляемую продукцию (по желанию клиента).
- Тестирование поставляемой продукции.
- Поставку компонентов, требующих военную и космическую приемку.
- Входной контроль качества.
- Наличие сертификата ISO.

В составе нашей компании организован Конструкторский отдел, призванный помогать разработчикам, и инженерам.

Конструкторский отдел помогает осуществить:

- Регистрацию проекта у производителя компонентов.
- Техническую поддержку проекта.
- Защиту от снятия компонента с производства.
- Оценку стоимости проекта по компонентам.
- Изготовление тестовой платы монтаж и пусконаладочные работы.



Тел: +7 (812) 336 43 04 (многоканальный)

Email: [org@lifeelectronics.ru](mailto:org@lifeelectronics.ru)

[www.lifeelectronics.ru](http://www.lifeelectronics.ru)