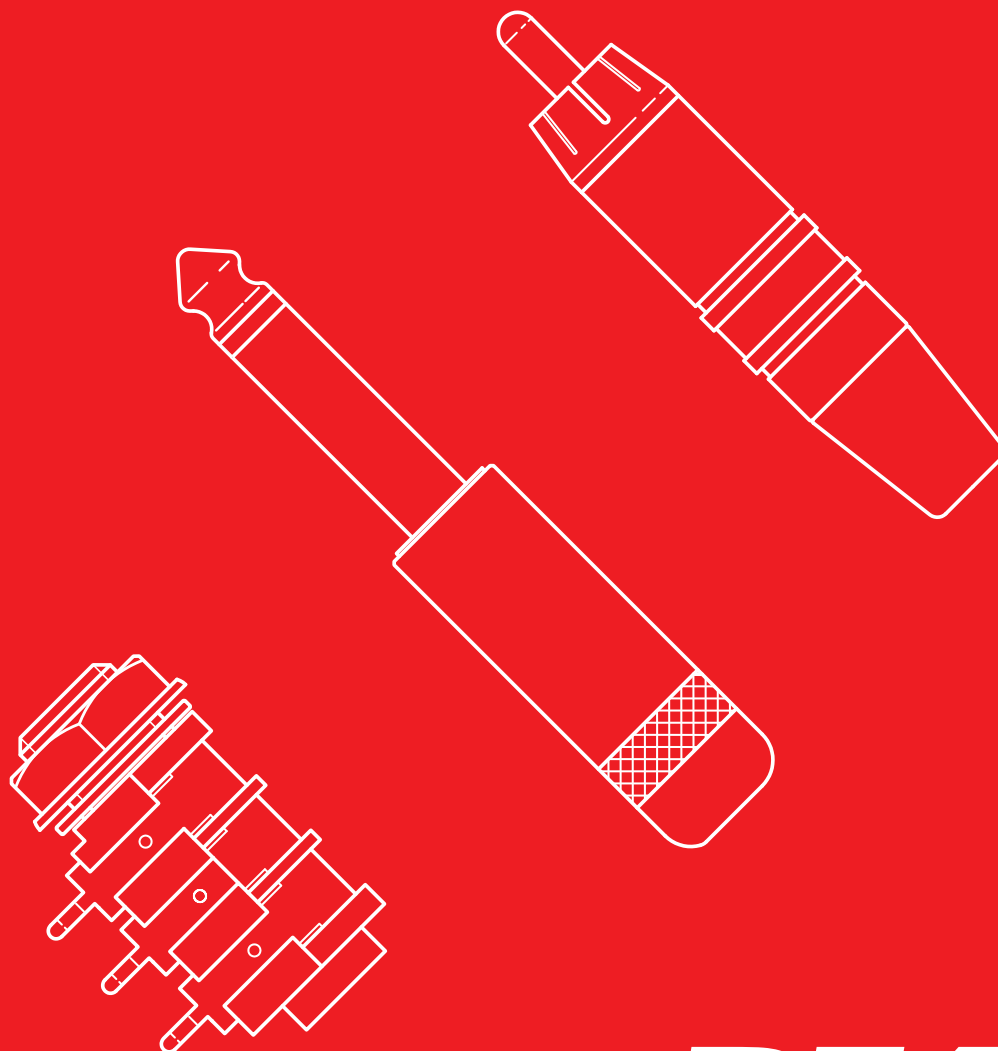




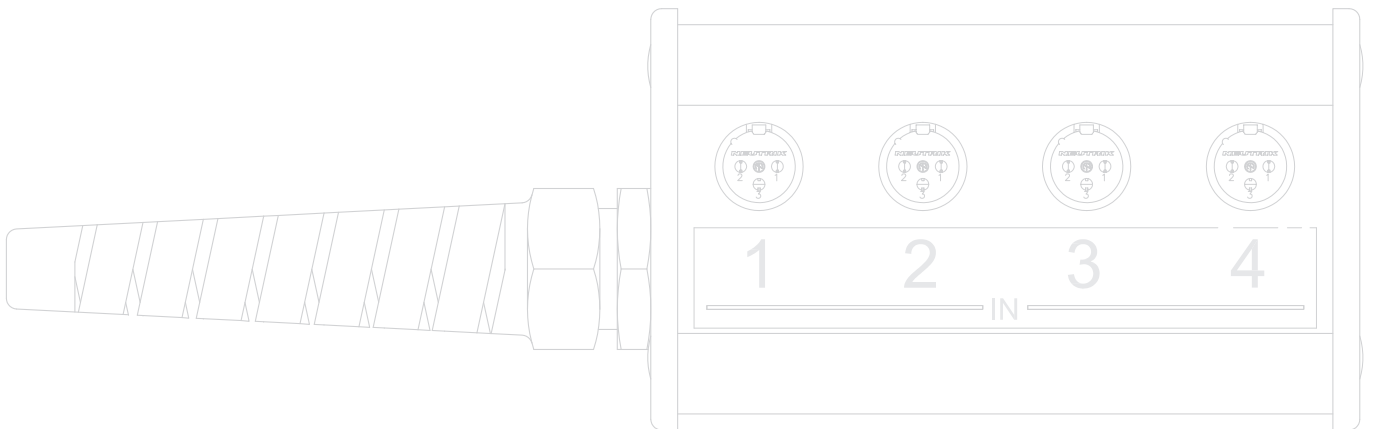
Product Guide | 2010



REAN
REAN a brand of Neutrik AG



| Content | Page |
|------------------------------------|------|
| TINY xlr | 4 |
| Plugs | 6 |
| Jacks | 8 |
| Phono "RCA" & DIN Connectors | 10 |
| Patch Box & Stage Box | 12 |
| Dual Banana Plug | 14 |
| Technical Data | 15 |



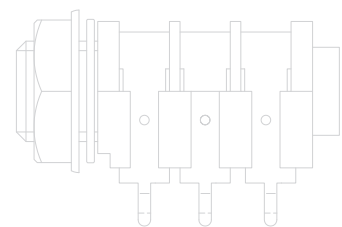
REAN

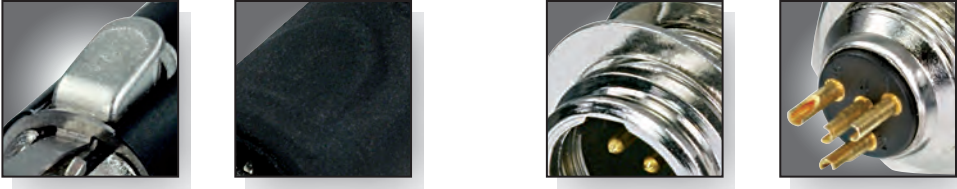
With the brand REAN, the world's leading supplier of professional audio and video connectors – Neutrik AG – offers another interesting product range.

Excellent cost-performance ratio, attractive design and reliable functionality are the strengths of REAN.

Based on long-time know-how audio and video connectors for professional applications are developed and produced on up to date production facilities. An efficient logistics system and a global sales network make a high availability and short delivery times possible. The REAN product range is an alternative solution for cost sensitive applications.

REAN a brand of Neutrik AG





TINY xlr



RT3FC-B



RT4FC-B-W

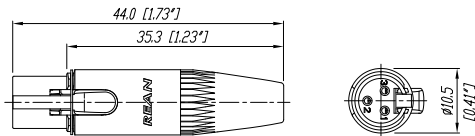


RT3MP

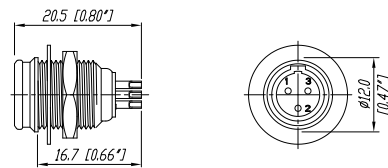
- 3- and 4-pole version available
- Easy to assemble
- Robust metal housing with best flex relief
- Shielded system – high noise immunity and EMI protection
- Intuitive and rugged locking mechanism provides secure locking system

- Millionfold proven chuck type strain relief
- Keyed insert and strain relief to avoid mispositioning / rotation of insert respectively cable
- Optional sealing boot (patent pending) for water / sweat protection if mated with RT*MP
- Watertight chassis connector, even in unmated condition

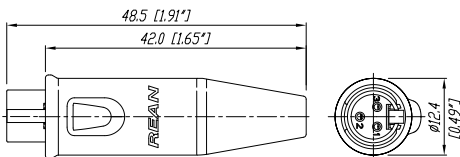
RT3FC-B



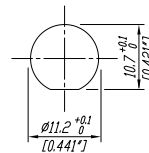
RT3MP



RT3FC-B-W



Panel Cutout



Ordering Information

| Type No. | Description |
|--|---|
| Cable connector | |
| RT3FC-B | 3-pole TINY cable connector, black metal shell, gold plated contacts |
| RT4FC-B | 4-pole TINY cable connector, black metal shell, gold plated contacts |
| RT*FC-B-D | TINY cable connector, black metal shell, gold plated contacts; bulk packed, to be ordered in multiples of 100 pcs. |
| Cable connector water resistant | |
| RT3FC-B-W | 3-pole TINY cable connector, black metal shell, water resistant, gold plated contacts |
| RT4FC-B-W | 4-pole TINY cable connector, black metal shell, water resistant, gold plated contacts |
| RT*FC-B-W-D | TINY cable connector, black metal shell, water resistant, gold plated contacts; bulk packed, to be ordered in multiples of 100 pcs. |
| Chassis connector | |
| RT3MP | 3-pole TINY chassis connector, nickel metal housing, gold plated contacts, max. panel thickness: 6 mm |
| RT4MP | 4-pole TINY chassis connector, nickel metal housing, gold plated contacts, max. panel thickness: 6 mm |
| RT*MP-D | TINY chassis connector, nickel metal housing, gold plated contacts, max. panel thickness: 6 mm; bulk packed, to be ordered in multiples of 100 pcs. |

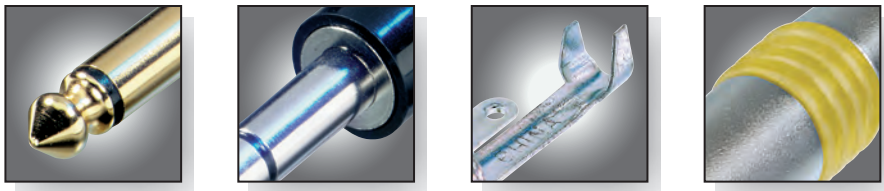
Specification

Cable connector RT*FC-B

Chassis connector RT*MP

| | Cable connector RT*FC-B | Chassis connector RT*MP |
|---------------------------|-------------------------------|-------------------------------|
| Electrical | | |
| Rated current per contact | < 5 A | < 5 A |
| Contact resistance | < 5 mΩ | < 5 mΩ |
| Insulation resistance | > 1 GΩ | > 1 GΩ |
| Dielectric strength | > 500 V rms | > 500 V rms |
| Mechanical | | |
| Lifetime | > 1'000 cycles | > 1'000 cycles |
| Cable O.D. range | 2.0 - 4.5 mm | - |
| Wiring | solder contactt | solder contactt |
| Max. Wire size | 0.22 mm ² / 24 AWG | 0.22 mm ² / 24 AWG |
| Material | | |
| Bushing | ABS | - |
| Contacts | bronze | brass |
| Contact plating | Au plated | Au plated |
| Insert | PA 6.6 30% GR | PA 6.6 30% GR |
| Shell (housing) | ZnAl4Cu1 | ZnAl4Cu1 |
| Shell plating | black | nickel |
| Strain relief | PA6 | - |
| Protection boot | EPDM | - |
| Environment | | |
| Temperature | -30°C to +85°C | -30°C to +85°C |
| Solderability | complies with IEC68-2-20 | complies with IEC68-2-20 |

Plugs



1/4" and 3.5 mm phone plugs



NYS 204



NYS 208



NYS 224G

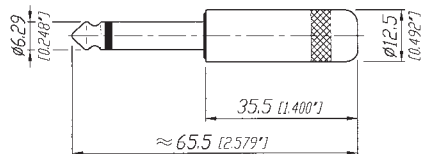


NYS 224C-6

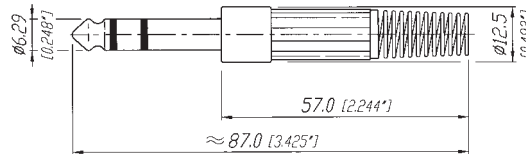
- Commercial 1/4" plugs and adapters
- All connectors according to EIA RS-453 / IEC 60603-11
- Short and long turned brass handles
- Plastic handle with flexible strain relief
- Heavy duty cable clamp for best strain relief

- Available in nickel, gold and black plating
- Large cable outlet and solder tabs
- Right angle version
- "Silent switch" on plug finger helps eliminate "pop" during insertion and withdrawal

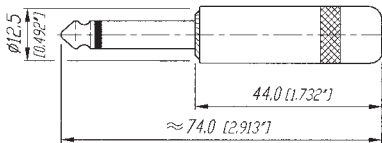
NYS 201



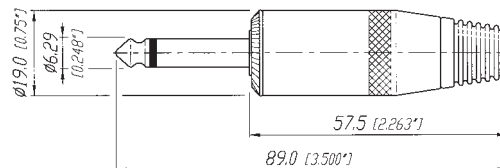
NYS 204



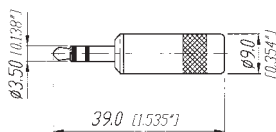
NYS 224



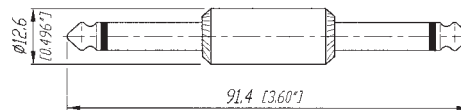
NYS 225



NYS 231

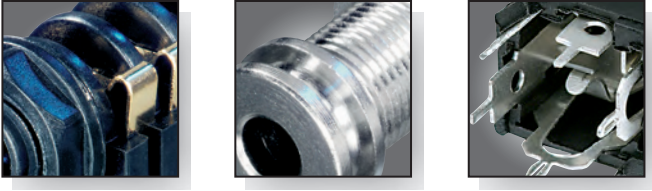


NYS 237



Ordering Information

| Type No. | Mono 2-pole | Stereo 3-pole | Description | Cable O.D. |
|--|----------------|------------------|---|---------------|
| 1/4" plug short handle | | | | |
| NYS 201 | • | | Short turned brass handle | 6 mm |
| NYS 202 | | • | Short turned brass handle | 6 mm |
| 1/4" plug plastic handle | | | | |
| NYS 203 | • | | Plastic handle with flexible strain relief | 6 mm |
| NYS 204 | | • | Plastic handle with flexible strain relief | 6 mm |
| 1/4" plug right angle | | | | |
| NYS 207 | • | | Metal housing, plastic bushing | 6 mm |
| NYS 207-2 | • | | Metal housing, red cover & plastic bushing | 6 mm |
| NYS 208 | | • | Metal housing, plastic bushing | 6 mm |
| 1/4" plug long handle | | | | |
| NYS 224 | • | | Long polished diecast handle, no rivet | 6 mm |
| NYS 224AG | • | | With gold plated handle and contacts | 6 mm |
| NYS 224BG | • | | With black metal handle, gold plated contacts | 6 mm |
| NYS 224G | • | | With gold plated contact | 6 mm |
| NYS 224GT | • | | With gold plated tin contacts | 6 mm |
| NYS 224L | • | | With large cable outlet | 8 mm |
| NYS 224S | • | | With tip switched to ground if not inserted (silent) | 6 mm |
| NYS 224C-* | • | | Diecast handle with coloured coding ring & rubber flex relief | 6 mm |
| NYS 228 | | • | Stereo version of 224 | 6 mm |
| NYS 228BG | | • | With black metal handle, gold plated contacts | 6 mm |
| NYS 228G | | • | With gold plated contacts | 6 mm |
| NYS 228GT | | • | With gold plated tip contact | 6 mm |
| *) 0 - black, 2 - red, 4 - yellow, 5 - green, 6 - blue | | | | |
| 1/4" plug with large shell for speaker cable | | | | |
| NYS 225 | • | | Large metal handle, rubber bushing | 8 mm |
| NYS 225B | • | | With black metal handle | 8 mm |
| NYS 225L | • | | With large cable outlet | 9 mm |
| NYS 225S | • | | With tip switched to ground if not inserted (silent) | 8 mm |
| 1/4" plug adapter | | | | |
| NYS 237 | • | | Mono plug adapter to mate standard 1/4" jacks, full metal | |
| NYS 239 | | • | Stereo plug adapter to mate standard 1/4" jacks, full metal | |
| 3.5 mm plug | | | | |
| NYS 226 | • | | Metal handle with crimp strain relief | 4 mm |
| NYS 226B | • | | With black metal handle | 4 mm |
| NYS 226BG | • | | With black metal handle, gold plated contacts | 4 mm |
| NYS 226G | • | | With gold plated contacts | 4 mm |
| NYS 226L | • | | With large cable outlet | 6 mm |
| NYS 227 | | • | 3.5 mm plug to 1/4" stereo jack, all metal | - |
| NYS 231 | | • | Metal handle with crimp strain relief | 4 mm |
| NYS 231B | | • | With black metal handle | 4 mm |
| NYS 231BG | | • | With black metal handle, gold plated contacts | 4 mm |
| NYS 231G | | • | With gold plated contacts | 4 mm |
| NYS 231L | | • | With large cable outlet | 6 mm |



1/4" phone jacks



NYS 216
Horizontal Jack



NYS 2202
Long Bushing



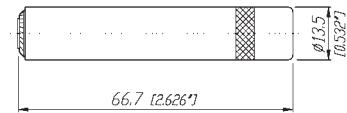
NYS 230
Open Jack



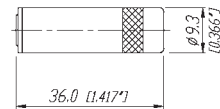
NYS 234
Vertical Jack

- Robust and reliable jacks in metal or plastic housing
- Horizontal and vertical PCB-mount
- Extra long-threaded bushing for thick panel and guitar bodies
- Plastic nut or chrome ferrule nut
- Kinked solder pins secure jack to PCB

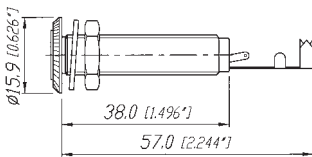
NYS 2202P



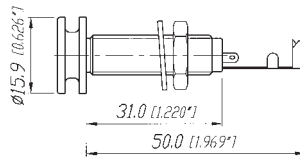
NYS 240



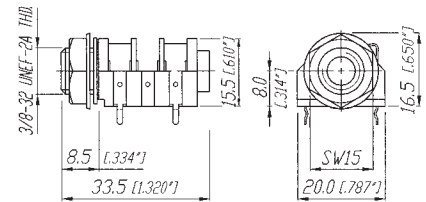
NYS 220



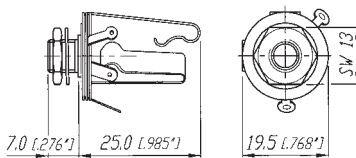
NYS 221



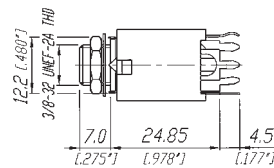
NYS 2162



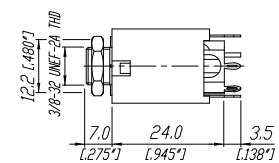
NYS 230



NYS 232



NYS 234



Ordering Information

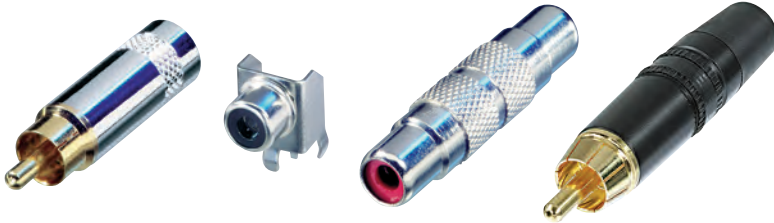
| Type No. | Mono 2-pole | Stereo 3-pole | Description | Distance to PCB |
|--|----------------|------------------|---|--------------------|
| 1/4" long bushing jacks | | | | |
| NYS 2202 | • | | Jack for thick panels, long-threaded bushing with washer and nut, full metal | – |
| NYS 2203 | | • | Jack for thick panels, long-threaded bushing with washer and nut, full metal | – |
| NYS 221 | | • | Jack with special design head for guitar strap, for thick panels, long-threaded bushing with washer and nut, full metal | – |
| Cable jacks | | | | |
| NYS 2202P | • | | 1/4" mono cable jack with metal handle, max. cable O.D. 6.0 mm | – |
| NYS 2203P | | • | 1/4" stereo cable jack with metal handle, max. cable O.D. 6.0 mm | – |
| NYS 240 | | • | 3.5 mm stereo cable jack with metal handle, max. cable O.D. 4 mm | – |
| NYS 240BG | | • | With black metal handle, gold plated contacts, max. cable O.D. 4 mm | – |
| NYS 240L | | • | With large cable outlet, max. cable O.D. 6.0 mm | – |
| 1/4" horizontal jacks (all contacts switched) | | | | |
| NYS 212 | | • | Plastic housing with washer and nut, solder tap version | – |
| NYS 2122 | • | | Plastic housing with washer and nut, solder tap version | – |
| NYS 215 | | • | With chrome ferrule nut | 8.2 mm |
| NYS 2152 | • | | With chrome ferrule nut | 8.2 mm |
| NYS 2152G | • | | With chrome ferrule nut and gold contacts | 8.2 mm |
| NYS 2152G-DIU | • | | Solder tap version with chrome ferrule nut, gold contacts, bulk packaging | – |
| NYS 216 | | • | Plastic housing with washer and nut | 8.2 mm |
| NYS 2162 | • | | Plastic housing with washer and nut | 8.2 mm |
| NYS 216G | | • | With gold contact | 8.2 mm |
| NYS 218 | | • | With extra long contacts | 15.0 mm |
| NYS 2182 | • | | With extra long contacts | 15.0 mm |
| NYS 219 | | • | With long contacts | 12.5 mm |
| NYS 2192 | • | | With long contacts | 12.5 mm |
| 1/4" open jacks | | | | |
| NYS 229 | • | | 2 contacts, with washer and nut, panel thickness 3.5 mm | – |
| NYS 229L | • | | 2 contacts, with longer threaded nose, washer and nut, panel thickness 6.5 mm, with 0.205" faston tabs | – |
| NYS 230 | | • | 3 contacts, with washer and nut, panel thickness 3.5 mm | – |
| 1/4" vertical jacks | | | | |
| NYS 232 | | • | Plastic housing, metal washer and nut, with tip and ring normalling contacts | 24.85 mm |
| NYS 234 | | • | Plastic housing, metal washer and nut, with tip and ring normalling contacts | 24.00 mm |
| NYS 2343 | | • | Plastic housing, metal washer and nut, no normalling contacts | 24.00 mm |
| Phone jack adapter | | | | |
| NYS 236 | • | | 1/4" jack adapter to mate with standard 1/4" plug, full metal | – |
| NYS 238 | | • | 1/4" jack adapter to mate with standard 1/4" plug, full metal | – |

Phono "RCA" & DIN Connectors



Phono ("RCA/Cinch")

DIN Connectors



NYS 352G

NYS 354

NYS 355

NYS 373-6



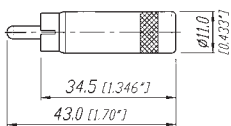
NYS 321

NYS 324

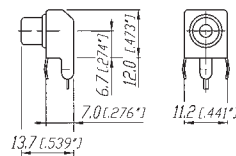
- Heavy duty phono plugs
- All metal
- Cable O.D. up to 6 mm (0.25")
- Cable clamp or chuck type strain relief
- Phono receptacle for PCB-mounting
- Phono to phono female adapter

- Male cable connectors with turned brass shell
- Flexible bushing
- Gold or silver-plated-non-tarnishing contacts
- Heavy duty cable clamp
- Female receptacle, stamped housing
- Complete shielding with ground contact
Nickel-plated shell

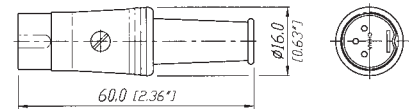
NYS 352



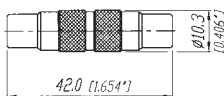
NYS 354



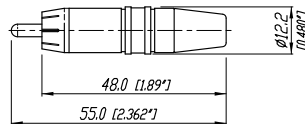
NYS 321



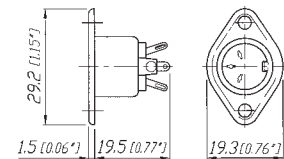
NYS 355



NYS 373-*



NYS 324



Ordering Information

| Type No. | Description | Cable O.D. |
|-------------------------------------|--|------------|
| Phono ("RCA/Cinch") | | |
| NYS 352 | Phono plug | 7.2 mm |
| NYS 352AG | Phono plug, all gold plated | 7.2 mm |
| NYS 352B | Phono plug with black metal handle | 7.2 mm |
| NYS 352BG | Phono plug with gold plated contacts and black metal handle | 7.2 mm |
| NYS 352G | Phono plug with gold plated contacts | 7.2 mm |
| NYS 354 | Phono receptacle, PCB-mount, max. panel thickness 1.2 mm | - |
| NYS 355 | Phono to phono female adapter | - |
| NYS 367-* | Phono chassis mount socket, gold plated contacts, color coding | - |
| NYS 372P | Phono jack with nickel plated contacts and handle | 7.2 mm |
| NYS 372P-BG | Phono jack with gold plated contacts and black plated handle | 7.2 mm |
| NYS 373-* | Phono plug with gold plated contacts, black chromium shell, chuck type strain relief | 3.0-6.1 mm |
| | *) 0 - black, 2 - red, 4 - yellow, 5 - green, 6 - blue, 9 - white | |
| DIN male cable connector | | |
| NYS 321 | 3-pole, silver plated contacts | 5.0 mm |
| NYS 321G | 3-pole with gold plated contacts | 5.0 mm |
| NYS 322 | 5-pole, silver plated contacts | 5.0 mm |
| NYS 322G | 5-pole with gold plated contacts | 5.0 mm |
| NYS 322AG | 5-pole with gold plated shell and contacts | 5.0 mm |
| NYS 323 | 7-pole, silver plated contacts | 5.0 mm |
| NYS 323G | 7-pole with gold plated contacts | 5.0 mm |
| DIN female chassis connector | | |
| NYS 324 | 3-pole, silver plated contacts | - |
| NYS 325 | 5-pole, silver plated contacts | - |
| NYS 326 | 7-pole, silver plated contacts | - |

Patch Box & Stage Box



Patch box



NYS-SSR-8

Stage box



NSB2A-20/4



NSB2B-12/4

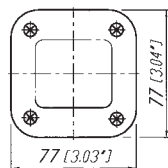
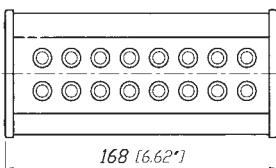


NSB1C-8/0

- "The Easy Way to Link your Audio System"
- 1/4" Patch box with 8 send/return modules (split print)
- Metal housing – reliable and robust
- Easy to assemble, simple to use

- Modular system for individual size and configuration
- Designed to be in an individual combination of connectors for "IN" and "OUT" and length
- Easy to assemble
- 3-pole XLR IDC receptacles eliminate stripping and tinning of wires
- Luminescent, self-adhesive labels for connector identification
- Extremely price competitive

NYS SSR-8



Ordering Information

(Supplied as disassembled set comprising of all hardware parts including plates, profiles, strain relief, endpieces and screws.)

Patch box

NYS-SSR-8 1/4" patch box with 8 send/return moduls (split print)

Stage box – type A

NSB1A-8/4 Length 1, 8 IN (female/send) and 4 OUT (male/return)
 NSB2A-12/4 Length 2, 12 IN (female/send) and 4 OUT (male/return)
 NSB2A-20/4 Length 2, 20 IN (female/send) and 4 OUT (male/return)
 NSB3A-32/4 Length 3, 32 IN (female/send) and 4 OUT (male/return)

Stage box – type B

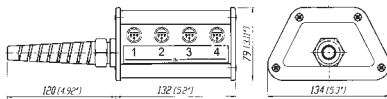
NSB1B-8/0 Length 1, 8 IN (female/send)
 NSB2B-12/4 Length 2, 12 IN (female/send) and 4 OUT (male/return)
 NSB2B-16/0 Length 2, 16 IN (female/send)
 NSB3B-20/4 Length 3, 20 IN (female/send) and 4 OUT (male/return)

Stage box – type C

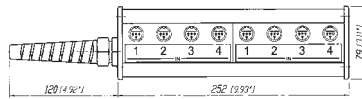
NSB1C-8/0 Length 1, 8 IN (female/send)
 NSB2C-12/4 Length 2, 12 IN (female/send) and 4 OUT (male/return)
 NSB3C-20/4 Length 3, 20 IN (female/send) and 4 OUT (male/return)

Type A

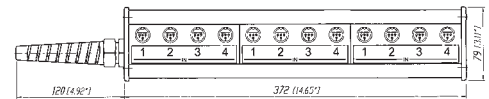
NSB1A



NSB2A

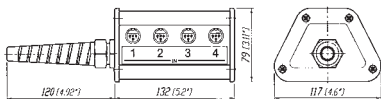


NSB3A

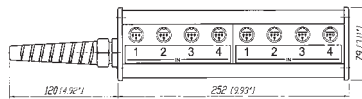


Type B

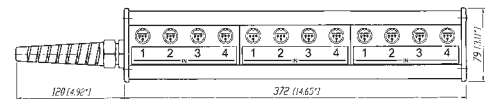
NSB1B



NSB2B

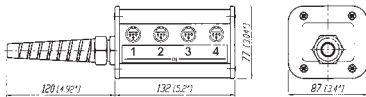


NSB3B



Type C

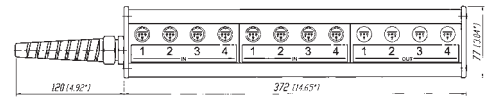
NSB1C



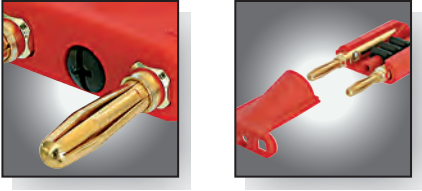
NSB2C



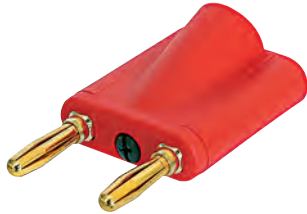
NSB3C



Dual Banana Plug



Dual banana plug



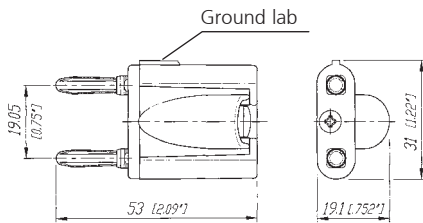
NYS 508-R



NYS 508-B

- Cable strain relief: teathed cable clamp featuring cable O.D. 6.0 - 10.5 mm
- Protection against electric shock: cable ends and plugs are completely covered in mated condition
- Gold plated contacts for tarnish resistance & long insertion life

NYS 508-*



Ordering Information

| Type No. | Description | Cable O.D. |
|------------------|---------------------------------|---------------|
| Dual banana plug | | |
| NYS 508-R | Dual banana plug, red housing | 6.0 - 10.5 mm |
| NYS 508-B | Dual banana plug, black housing | 6.0 - 10.5 mm |

Technical Data

Specification

| Electrical | | Phone plugs | Phone jacks | Phono ("RCA/Cinch") | DIN connectors | Dual banana plug |
|-----------------------|-----------------------------|-------------|-------------|---------------------|----------------|------------------|
| Rated current | Depends on mating connector | • | • | • | • | 20 A |
| Contact resistance | Depends on mating connector | • | • | • | • | – |
| Insulation resistance | ≥ 1 GΩ | • | • | • | • | • |
| Dielectric strength | 500 V dc | • | • | • | • | • |

| Mechanical | | | | | | |
|--|--------------------------|----------------|--------------------------|--------------------------|----------------|----------------|
| Life cycles | | 5'000 | 5'000 | 5'000 | 1'000 | 5'000 |
| Insertion / withdrawal force ≤ 20 N / ≥ 10 N | | – | • | – | – | – |
| Cable O.D. | See ordering information | – | – | See ordering information | 5 mm | 6.0-10.5 mm |
| Panel thickness | – | – | See ordering information | – | – | – |
| Solderability complies with IEC68-2-20 | | • | • | • | • | – |
| Operating temperature | | -25°C to +70°C | -25°C to +70°C | -25°C to +70°C | -25°C to +70°C | -25°C to +50°C |

| Material | | | | | | |
|---------------------|---|---|---|---|-----------------|---|
| Housing/handle | - Brass Ni / Au / black plated | NYS 201/202/226/231 | • | • | • | – |
| | - Zinc Diecast, Ni/black plated | • | – | – | – | – |
| | - Steel, Ni plated | – | – | – | NYS 324/325/326 | – |
| Insulation | - Thermoplastic | • | • | • | • | • |
| Contacts | - Brass, Ni / Au plated | • | • | • | • | • |
| Strain relief | - Crimp type SnCe plated | • | – | • | – | – |
| | - Crimp type Zn plated | – | – | – | • | – |
| | - Chuck tye (POM) | – | – | NYS 373 | – | – |
| | - Teethed cable clamp | – | – | – | – | • |
| Part number coding: | B black handle BG black handle, gold plated contacts | G gold plated contacts S silent switch | | AG all gold, gold plated contacts and shell GT gold plated tip contact | | |

Specification

1/4" patch box

Stage box

| Electrical | | 1/4" patch box | Stage box |
|-----------------------|-----------------------------|----------------|-----------|
| Rated current | Depends on mating connector | • | 2 A |
| Contact resistance | Depends on mating connector | • | < 5 mΩ |
| Insulation resistance | ≥ 1 GΩ | • | • |
| Dielectric strength | 500 V dc | • | • |

| Mechanical | | | |
|--|-----------------|----------|---|
| Life cycles | | > 10'000 | > 1'000 |
| Insertion / withdrawal force ≤ 20 N / ≥ 10 N | | • | ≤ 10 N / ≥ 10 N |
| Multicore cable O.D. | | – | 15 / 20 mm |
| Applicable wire size | | – | 0.22 mm ² / 24 AWG and 0.14 mm ² / 26 AWG |
| Operating temperature | -25°C to + 70°C | • | • |

| Material | | | |
|-------------|------------------|-----------|-----------|
| Housing | | Aluminium | Aluminium |
| Quad plates | | – | POM |
| End pieces | - Thermoplastic | • | • |
| Contacts | - Brass / Bronze | Ni plated | Au plated |

A large gray rectangular area containing horizontal white lines, resembling a writing template or a placeholder for text. The lines are evenly spaced and extend across the width of the gray area.

A large gray rectangular area containing horizontal white lines, resembling a writing template or a placeholder for text. The lines are evenly spaced and extend across the width of the gray area.

Liechtenstein (Headquarters)

NEUTRIK AG, Im alten Riet 143, 9494 Schaan
T +423 237 24 24, F +423 232 53 93, neutrik@neutrik.com

Germany/Netherlands/Denmark/Austria

Neutrik Vertriebs GmbH, Felix-Wankel-Strasse 1, 85221 Dachau
T +49 8131 28 08 90, info@neutrik.de

Great Britain

Neutrik (UK) Ltd., Westridge Business Park, Cothey Way
Ryde, Isle of Wight PO33 1 QT
T +44 1983 811 441, sales@neutrik.co.uk

France

Neutrik France SARL, Rue du Parchamp 13, 92100 Boulogne-Billancourt
T +33 1 41 31 67 50, info@neutrik.fr

USA

Neutrik USA Inc., 195 Lehigh Avenue, Lakewood, NJ 08701-4527
T +1 732 901 94 88, info@neutrikusa.com

Japan

Neutrik Limited, Yusen-Higashinohonbashi-Ekimae Bldg., 3-7-19
Higashinohonbashi, Chuo-ku, Tokyo 103
T +81 3 3663 47 33, mail@neutrik.co.jp

Hong Kong

Neutrik Hong Kong LTD., Workshop 14, 16 Floor, Wah Wai Centre
Nr. 38-40 Au Pui Wan Street, Shatin, New Territories
T +852 2687 6055, neutrik@neutrik.com.hk

China

Ningbo Neutrik Electronics Co., Ltd., Shiqi Street, Yinxian Road West
Fengjia Villiage, Yinzhou Area, Ningbo, Zhejiang; 315153
T +86 574 88250488 800, neutrik@neutrik.com.cn

Компания «Life Electronics» занимается поставками электронных компонентов импортного и отечественного производства от производителей и со складов крупных дистрибьюторов Европы, Америки и Азии.

С конца 2013 года компания активно расширяет линейку поставок компонентов по направлению коаксиальный кабель, кварцевые генераторы и конденсаторы (керамические, пленочные, электролитические), за счёт заключения дистрибьюторских договоров

Мы предлагаем:

- Конкурентоспособные цены и скидки постоянным клиентам.
- Специальные условия для постоянных клиентов.
- Подбор аналогов.
- Поставку компонентов в любых объемах, удовлетворяющих вашим потребностям.
- Приемлемые сроки поставки, возможна ускоренная поставка.
- Доставку товара в любую точку России и стран СНГ.
- Комплексную поставку.
- Работу по проектам и поставку образцов.
- Формирование склада под заказчика.
- Сертификаты соответствия на поставляемую продукцию (по желанию клиента).
- Тестирование поставляемой продукции.
- Поставку компонентов, требующих военную и космическую приемку.
- Входной контроль качества.
- Наличие сертификата ISO.

В составе нашей компании организован Конструкторский отдел, призванный помогать разработчикам, и инженерам.

Конструкторский отдел помогает осуществить:

- Регистрацию проекта у производителя компонентов.
- Техническую поддержку проекта.
- Защиту от снятия компонента с производства.
- Оценку стоимости проекта по компонентам.
- Изготовление тестовой платы монтаж и пусконаладочные работы.



Тел: +7 (812) 336 43 04 (многоканальный)
Email: org@lifeelectronics.ru