

# NEXUS<sup>®</sup>



**Audio Frequency  
Plugs & Jacks**

**Push-Button  
Switches**

*Consistent Product Reliability*

# N

**EXUS, Incorporated**, established in 1961, offers design and production of superior quality audio plugs, jacks and momentary push-button switches.



*William Flanagan, President  
and Fred Farahani, Vice President*

#### Nexus Connectors:

- specified in OEM headset applications where “breakaway-style” audio connectors are required
- the standard in military/commercial communication headset markets

#### Nexus Switches:

- strong, “tactile-feedback” feature
- designed for applications that require durable, reliable and cost-effective switching

#### Applications:

- Military
- Commercial Aviation Electronics
- Medical Products
- Telecommunications
- Simulation Controls
- Auto Racing
- Powerboat Racing
- Farm Equipment



#### **NEXUS facilities and equipment include:**

- CNC Machining
- Thermoset and Thermoplastic Molding Machines
- Stamping Presses
- Numerous Assembly Fixtures
- Heat Treating Equipment
- Special Plating Equipment
- CAD (Computer Aided Design)
- Tool Room, Testing Lab, Clean Room
- And other Special Proprietary Processes that are designed to manufacture dependable quality products.



*Dedicated.*



Customer  
Service



In-House  
Tooling



Press Work  
& CNC  
Machining



*Experienced.*



Molding

Testing  
Lab



Shipping  
Department



*Reliable.*

# Count on Us for Consistent Product Reliability!



## NEXUS

Tel.: 203-327-7300

Fax: 203-324-7623

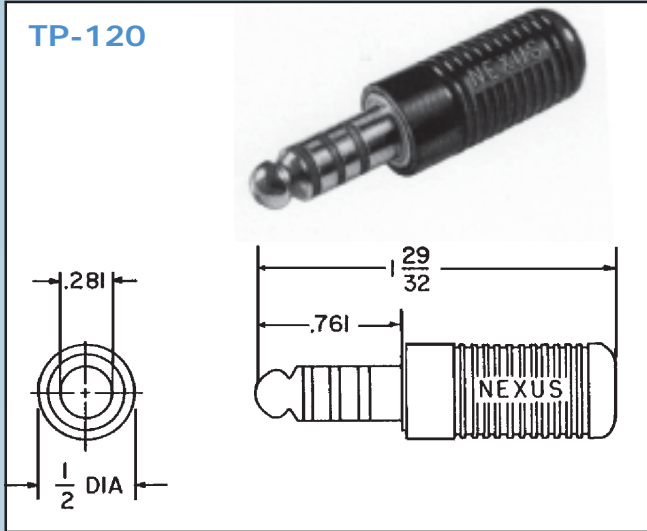
Email: [salesinfo@nexus.com](mailto:salesinfo@nexus.com)

[www.nexus.com](http://www.nexus.com)

50 Sunnyside Avenue  
P.O. Box 10177  
Stamford, Connecticut 06904-2177, USA

# Commercial Telephone Plugs & Jacks Four Conductor

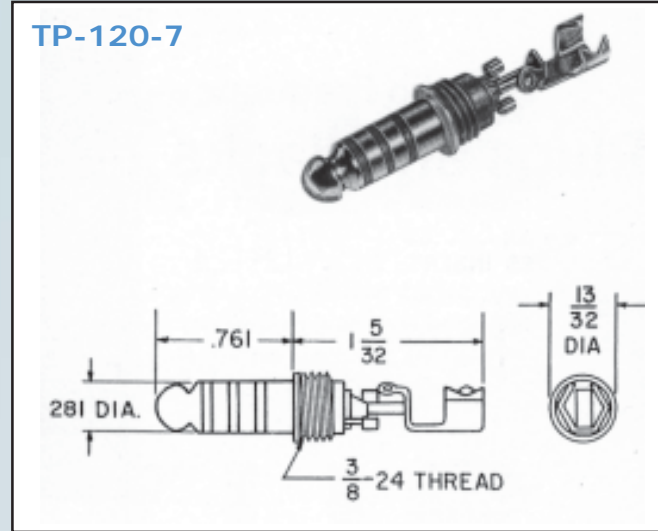
TP-120



## Four Conductor Telephone Plug

Mates with Nexus Series TJ-120, TJ-102 and TJ-101 jacks. One piece nickel plated brass contacts are integrally molded into plastic body.

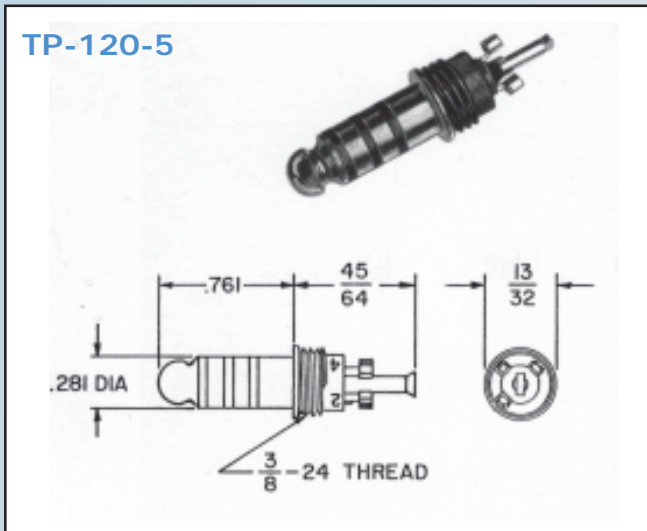
TP-120-7



## Four Conductor Telephone Plug

Mates with Nexus Series TJ-120, TJ-102 and TJ-101 jacks. For custom molding directly to cable. Same as TP-120 but without plastic shell.

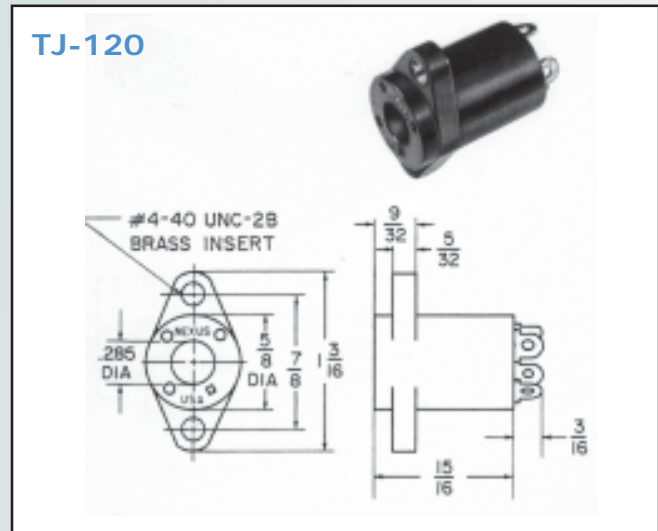
TP-120-5



## Four Conductor Telephone Plug

Mates with Nexus Series TJ-120, TJ-102, TJ-101 jacks. For custom molding directly to cable. Same as TP-120-7 but strain relief clip omitted.

TJ-120



## Flanged Rear-Mounted Jack

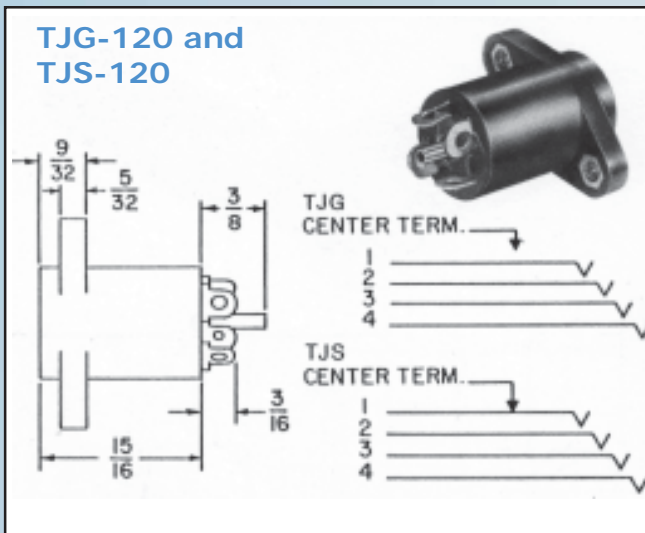
Mates with Nexus Series TP-120, TP-101, TP-102, and TPSJ-101 plugs. Nickel plated beryllium contacts are anchored in a phenolic body.

# NEXUS



# Commercial Telephone Plugs & Jacks Four Conductor

**TJG-120 and  
TJS-120**



**Flanged Rear-Mounted Jacks with Switches**  
Mates with Nexus Series TP-120, TP-101 and TP-102 plugs. A fifth contact has been added to the TJ-120 design in a normally open circuit with the No. 1 contact to make the TJG-120. Insertion of a four conductor plug closes the No. 1-5 contact circuit. The TJS-120 is the same as TJG-120 except the fifth, or switching contact is normally in a closed circuit with the No. 1 contact. Insertion of a four conductor plug opens the No. 1-5 contact circuit.

Standard plugs and jacks are available for prompt shipment.

Suggested wiring sequences for telephone plugs and jacks are as follows:

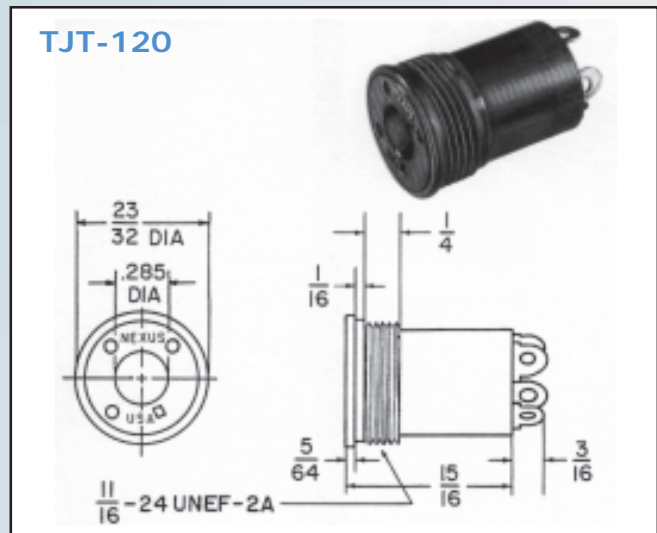
For binaural headsets, wire the connector

- Contact #1                      Microphone, high
- Contact #2                      Left earphone
- Contact #3                      Microphone, low
- Contact #4                      Right earphone
- Contact #5                      Earphones, low

For monaural headsets, wire the connector

- Contact #1                      Microphone, high
- Contact #2                      Earphones, high
- Contact #3                      Microphone, low
- Contact #4                      Earphones, low

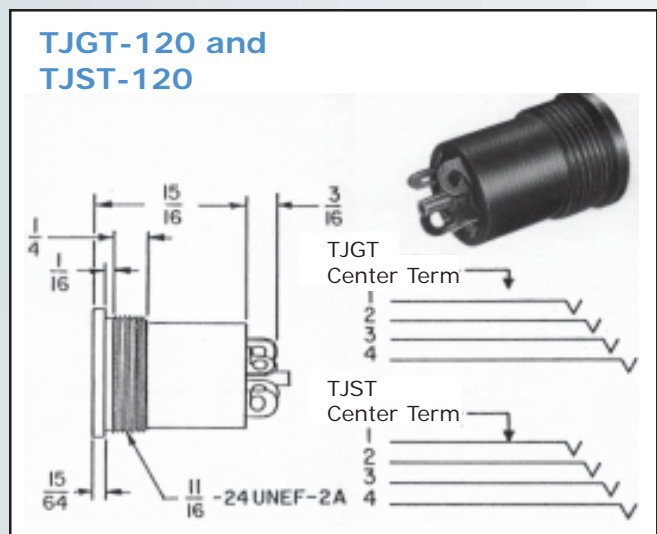
**TJT-120**



**Threaded Front-Mounted Jack**

Mates with Nexus Series TP-120, TP-101 and TP-102 plugs. Same material and construction as the TJ-120. Jack housing is threaded for front mounting by screwing into threaded mounting hole or by inserting into front of panel and securing with nut and lockwasher from behind.

**TJGT-120 and  
TJST-120**



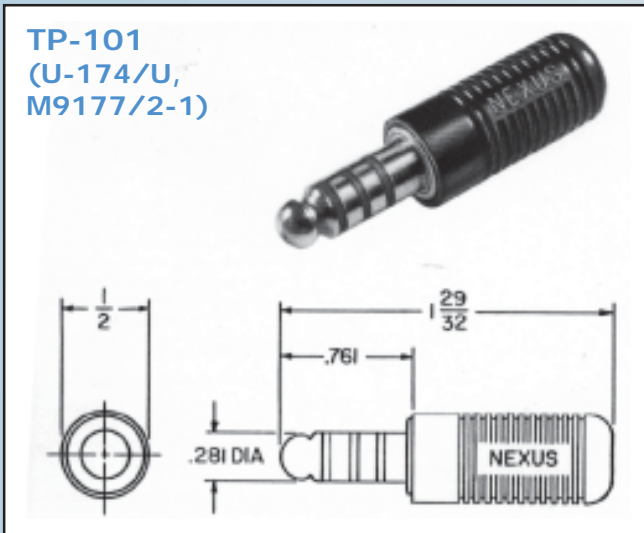
**Threaded Front-Mounted Jack With Switches**

Mates with Nexus Series TP-120, TP-101 and TP-102 plugs. A fifth contact has been added to the TJT-120 design in a normally open circuit with the No.1 contact to make the TJGT-120. Insertion of a four conductor plug closes the No. 1-5 contact circuit. The TJST-120 is the same as TJGT-120 except the fifth or switching contact is in a normally closed circuit with the No. 1 contact. Insertion of a four conductor plug open the No. 1-5 contact circuit.

# Military Telephone Plugs & Jacks

## Four Conductor

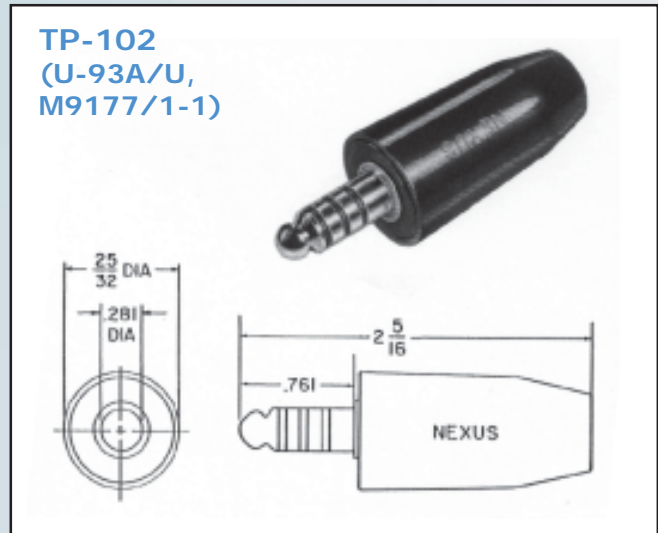
**TP-101**  
(U-174/U,  
M9177/2-1)



### Four Conductor Telephone Plug

Mates with Nexus Series TJ-120, TJ-102 and TJ-101 jacks. One piece monel contacts integrally molded into glass filled nylon plastic.

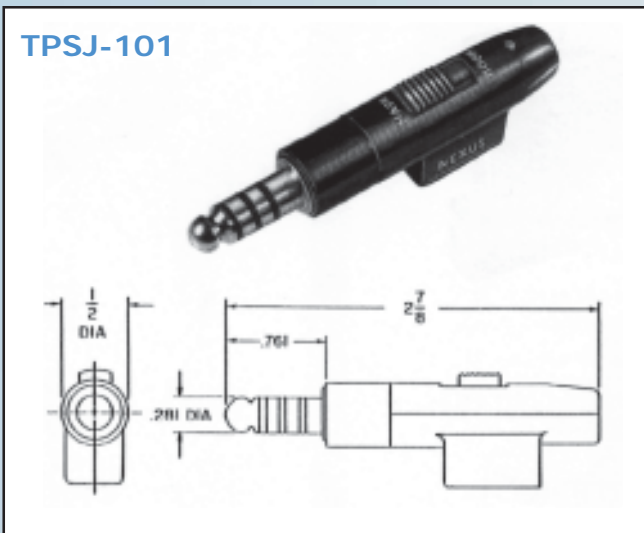
**TP-102**  
(U-93A/U,  
M9177/1-1)



### Four Conductor Telephone Plug

Mates with Nexus Series TJ-120, TJ-102 and TJ-101 jacks. Nickel plated brass contacts molded into plastic body. It accommodates larger diameter cable than the TP-101 or TP-120.

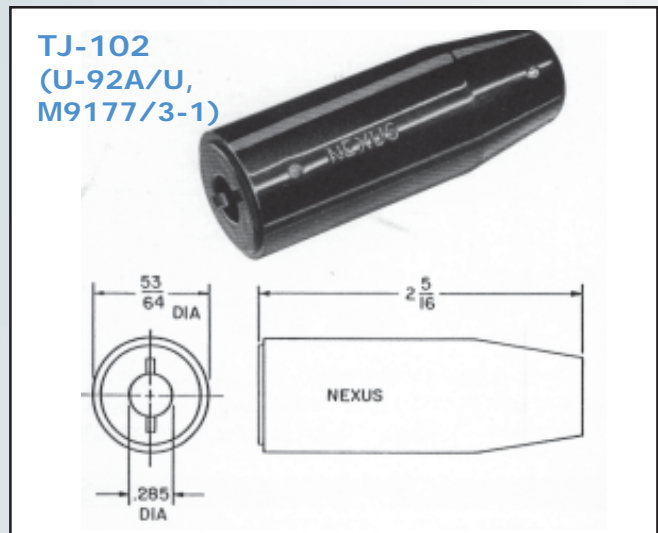
**TPSJ-101**



### Plug-Switch-Jack Combination

Mates with Nexus Series TJ-120, TJ-102 and TJ-101 jacks. The jack section of the connector mates with a MP-101 plug. Provides the design and electrical characteristics of the TP-101, combined with a manually operated DPDT slide switch and integral two conductor microphone jack.

**TJ-102**  
(U-92A/U,  
M9177/3-1)



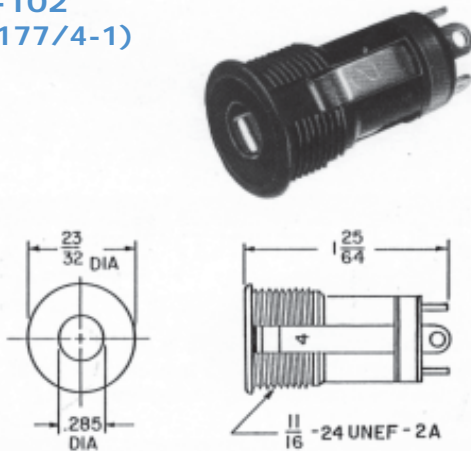
### Four Conductor Telephone Jack

Mates with Nexus Series TP-120, TP-101, TPSJ-101 and TP-102 plugs. Nickel plated beryllium contacts are anchored in a glass filled nylon body.

# NEXUS®

# Military Telephone Plugs & Jacks Four Conductor

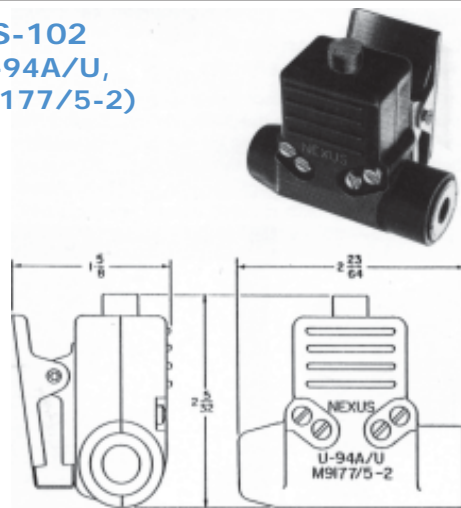
**TJT-102**  
(M9177/4-1)



## Four Conductor Telephone Jack

Mates with Nexus Series TP-120, TP-101 and TP-102 plugs. A panel mounted version of the TJ-102.

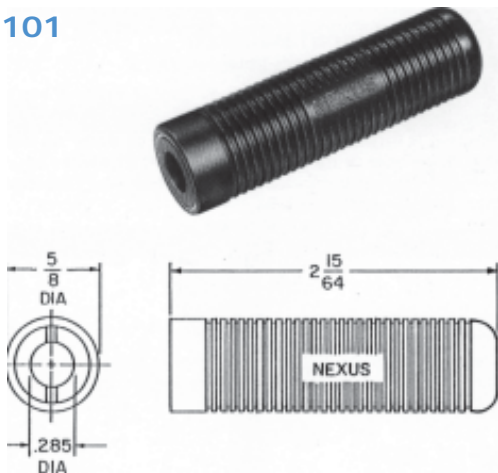
**TJS-102**  
(U-94A/U,  
M9177/5-2)



## Telephone Jack Switch

Mates with Nexus Series TP-120, TP-101 and TP-102 plugs. Combines a jack similar to TJ-102 with a momentary contact push-button switch and a clothing clip.

**TJ-101**



## Four Conductor Telephone Jack

Mates with Nexus Series TP-120, TP-101, TPSJ-101 and TP-102 plugs. Nickel plated beryllium copper contacts molded into plastic body.

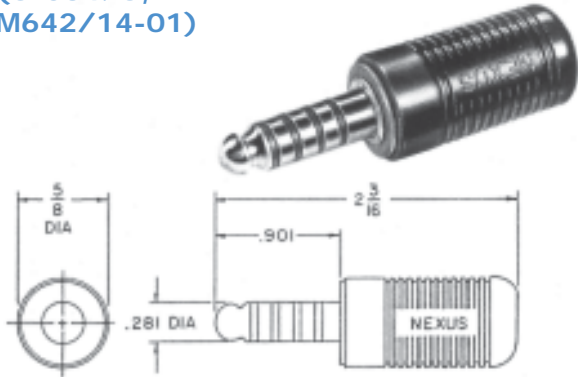


*Assembly*



# Military Telephone Plugs & Jacks Five Conductor

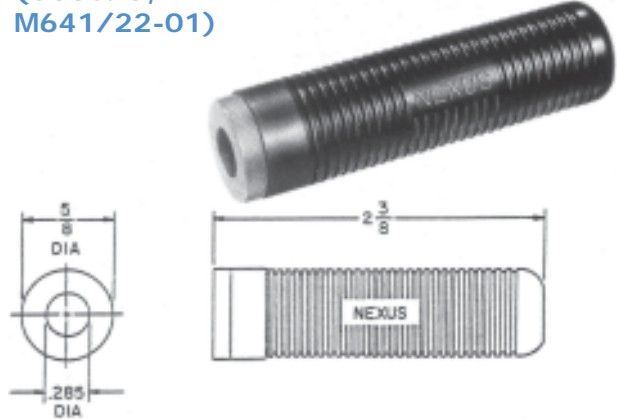
**TP-105**  
(U-384/U,  
M642/14-01)



## Five Conductor Telephone Plug

Mates with Nexus Series TJ-105 and TJT-125 jacks. One piece monel contacts integrally molded into red plastic body.

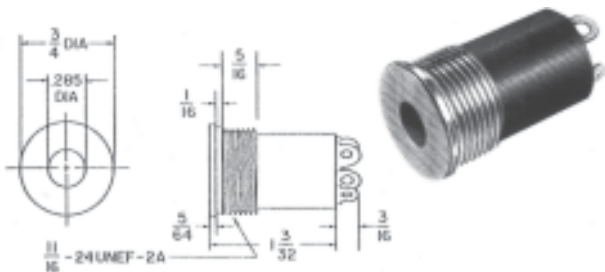
**TJ-105**  
(U385/U,  
M641/22-01)



## Five Conductor Telephone Jack

Mates with TP-105 plug. Nickel plated beryllium copper contacts molded into red plastic body.

**TJT-125**



## Threaded, Front-Mounted Five Conductor Telephone Jack

Mates with Nexus TP-105 plug. Similar material and construction as TJT-120 jack, but providing 5 contacts. Jack housing is threaded for front-mounting by screwing into mounting hole or by inserting into front of panel and securing by nut and lockwasher from behind. Threaded mounting is contact No. 5.

*Now  
Available*



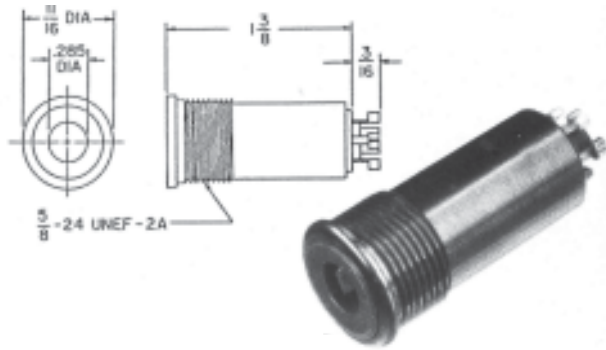
## Miniature Series Seven Conductor

For more information  
visit our website  
[www.nexus.com](http://www.nexus.com)

# NEXUS

# Military Telephone Plugs & Jacks Five Conductor

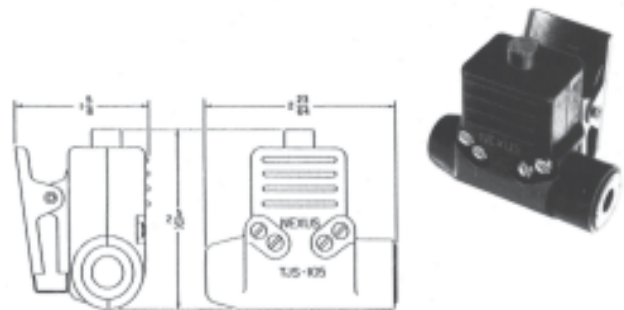
TJT-105



## Threaded, Front-Mounted Five Conductor Telephone Jack

Mates with TP-105 plug. Jack housing is threaded for front-mounting by screwing into mounting hole or by inserting into front of panel and securing by nut and lockwasher from behind. All five contact terminations from rear of jack, threaded mounting is not a contact. Nickel plated beryllium copper contacts molded into red plastic body.

TJS-105



## Five Conductor Telephone Jack Switch

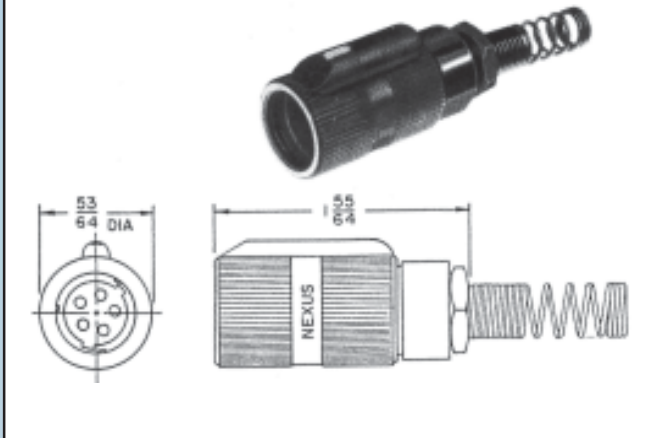
Mates with Nexus TP-105 plug. Combines a jack similar to TJ-105 with a momentary contact push-button switch and a clothing clip.

*Experienced  
Dependable  
Nexus  
Team Members*



# Military Audio Plugs Five and Six Conductor

**AP-125**  
(M551 16/1)



## **Five Conductor**

Wire strain relief, crimp sleeve terminals.

**AP-126 (M55116/2)**  
**Six Conductor**

Wire strain relief, crimp sleeve terminals.

**AP-145 (M55116/3)**  
**Five Conductor**

Wire strain relief, solder cup terminals.

**AP-146 (M55116/4)**  
**Six Conductor**

Wire strain relief, solder cup terminals.

**AP-155 (M55116/5)**  
**Five Conductor**

Molded strain relief, crimp sleeve terminals.

**AP-156 (M55116/6)**  
**Six Conductor**

Molded strain relief, crimp sleeve terminals.

**AP-165 (M55116/7)**  
**Five Conductor**

Molded strain relief, solder cup terminals.

**AP-166 (M55116/8)**  
**Six Conductor**

Molded strain relief, solder cup terminals.

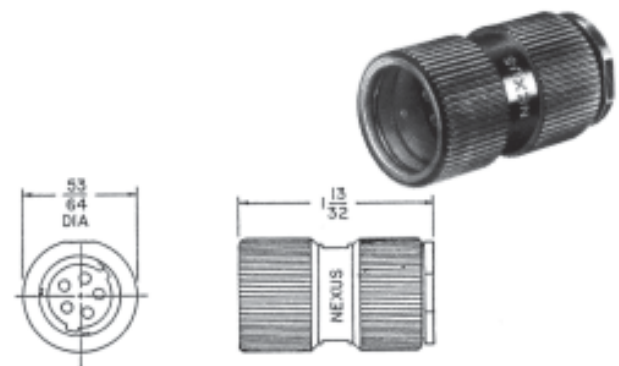
**AP-136**



## **Shielded Six Conductor**

Same as AP-126 with provision to terminate shielded cable.

**AP-105**  
(U-182 B/U)



## **Five Conductor**

Mates with U-183/U and U-288/U. Use with molded rubber strain relief. AP-106 is the same as above except it has six conductors.

# NEXUS



# Military Audio Plugs Five and Six Conductor

**AP-115**  
(U-229 B/U)



## Five Conductor

Mates with U-183/U and U-228/U. Coil spring strain relief. The AP-116 is the same as above except it has six conductors.

**NOTE:** All 5-conductor plugs on pages 7 and 8 mate with M55116/9, M55116/11 and M55116/13 jacks. All 6-conductor plugs on pages 7 and 8 mate with M55116/10, M55116/12 and M55116/14 jacks. Shells are glass filled nylon plastic with metal insert.

*Quality Control  
ISO 9001 Certified*



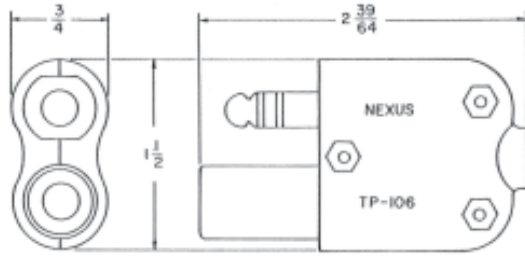
*In-house  
CNC Machining*



# Military Plugs and Jacks

## Biaxial Shielded/Six and Eight Conductor

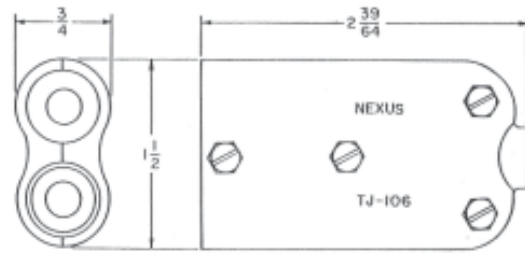
**TP-106**



**Telephone Plug Biaxial Shielded  
Six Conductor**

Mates with Nexus Series TJ-106 jacks.

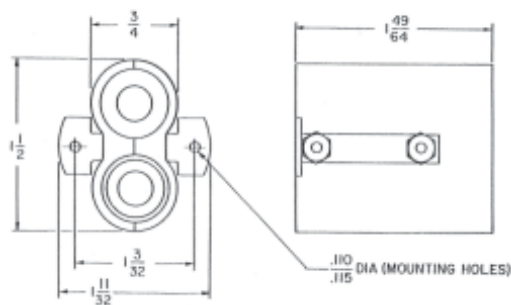
**TJ-106**



**Telephone Jack Biaxial Shielded  
Six Conductor**

Mates with Nexus TP-106 plug.

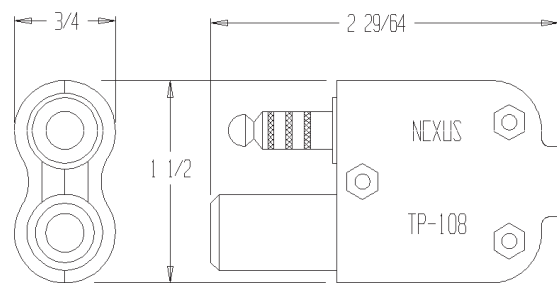
**TJ-106 PM**



**Telephone Jack Biaxial Shielded  
Six Conductor Panel Mount**

Mates with Nexus TP-106 plug.

**TP-108**



**Telephone Plug Biaxial Shielded  
Eight Conductor**

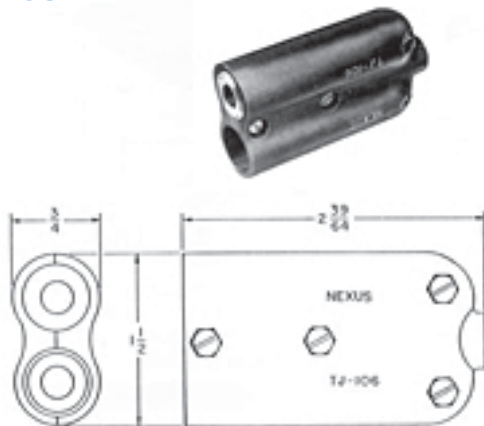
Mates with Nexus TJ-108 jack.

# NEXUS

# Military Plugs and Jacks

## Biaxial Shielded/Six and Eight Conductor

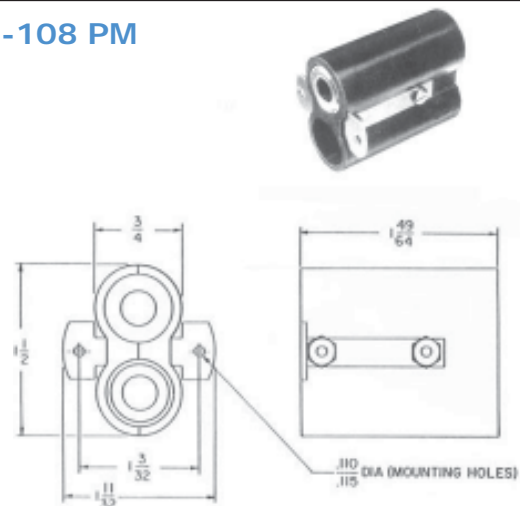
TJ-108



**Telephone Plug Biaxial Shielded  
Eight Conductor**

Mates with Nexus TP-108 plug.

TJ-108 PM



**Telephone Jack Biaxial Shielded  
Eight Conductor Panel Mount**

Mates with Nexus TP-108 plug.



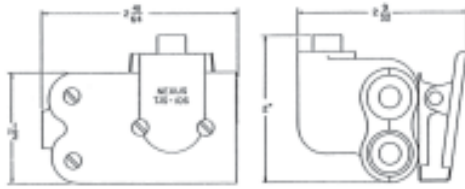
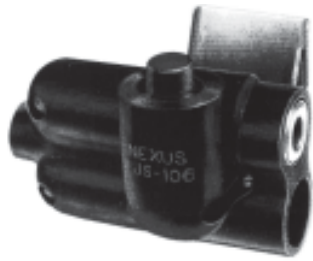
*Consistent Product  
Reliability*



# Military Jack-Switch Combinations

Biaxial Shielded/Six & Eight Conductor/ with Clothing Clip

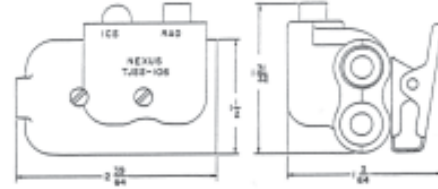
**TJS-106**



**Telephone Jack Switch Biaxial Shielded  
Six Conductor**

Mates with TP-106 plug.

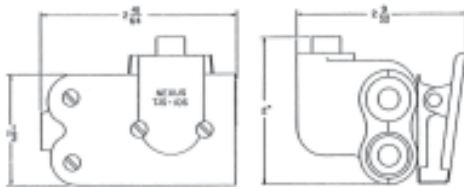
**TJSS-106**



**Telephone Jack, Two Switches  
Biaxial Shielded, Six Conductor**

Mates with Nexus Series TP-106 plug.

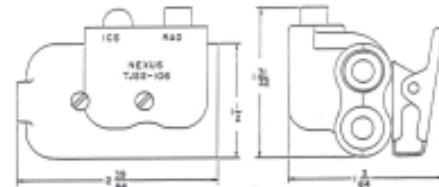
**TJS-108**



**Telephone Jack Switch Biaxial Shielded  
Eight Conductor**

Mates with Nexus TP-108 plug.

**TJSS-108**



**Telephone Jack, Two Switches  
Biaxial Shielded, Eight Conductor**

Mates with Nexus TP-108 plug.

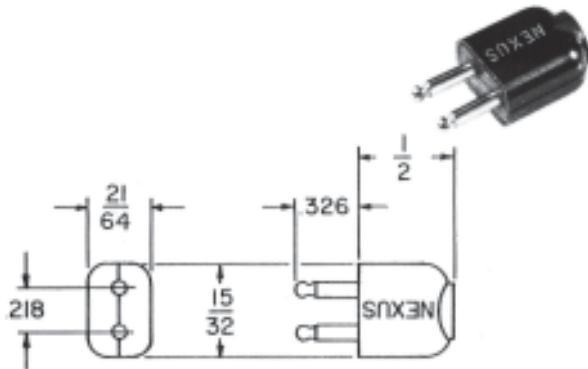
Nexus, Inc. developed these connectors at the request of the United States Army to meet special project requirements of Tempest. Nexus has the engineering capability to design connectors and electro-mechanical devices to meet special applications. We welcome your inquiries.

# NEXUS

# Military Microphone Plugs and Jacks

## Two Conductor

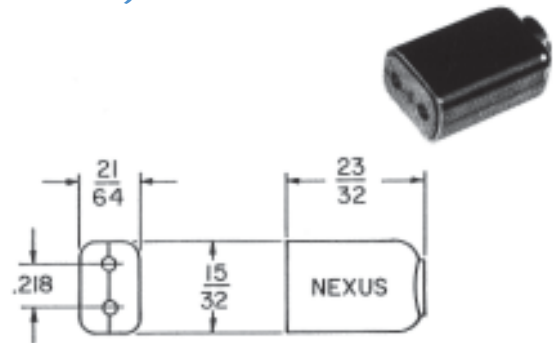
**MP-101**  
(U-173/U)



### Two Pin Microphone Plug

Mates with Nexus MJ-101, MJ-102, MJ-122, MJ-132 and MJ-112 two conductor jacks. Nickel plated beryllium copper contacts assemble into nylon body.

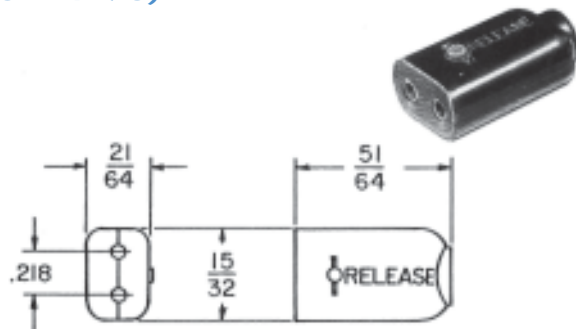
**MJ-101**  
(U-172/U)



### Two Conductor Microphone Jack

Mates with Nexus MP-101 two conductor plug. Nickel plated beryllium copper contacts assemble into nylon body.

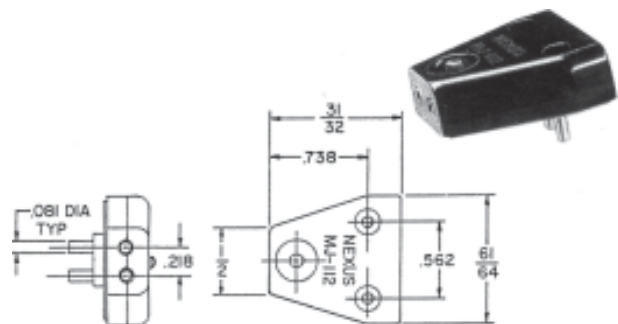
**MJ-102**  
(U-179A/U)



### Two Conductor Microphone Locking Jack

Mates with Nexus MP-101 two conductor plug. Similar to MJ-101 jack in electrical and material characteristics, but with spring-actuated locking design and manual button release.

**MJ-112**



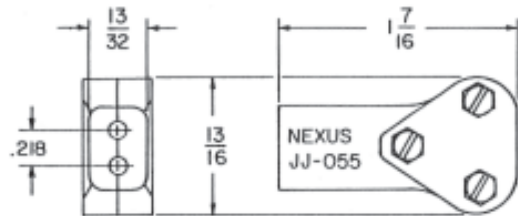
### Two Conductor Microphone Jack

Mates with Nexus MP-101 two conductor plug. Special oxygen mask connector, nickel plated beryllium copper contacts, spring-actuated locking design and manual button release. Assembled in ABS body.

# Military Microphone Plugs and Jacks

## Two Conductor

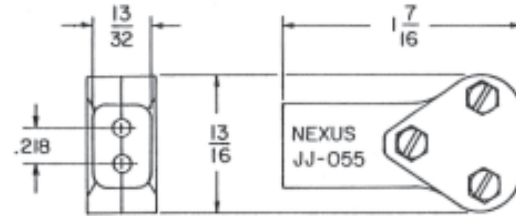
**MJ-122  
(JJ-055)**



### Two Conductor Microphone Jack

Mates with PJ-291, PJ-292 and Nexus MP-101 two conductor plugs. Nickel plated beryllium copper contacts assemble into glass filled nylon body.

**MJ-132  
(JJ-055)**



### Two Conductor Microphone Jack

Identical to MJ-122 except used with smaller diameter cable.



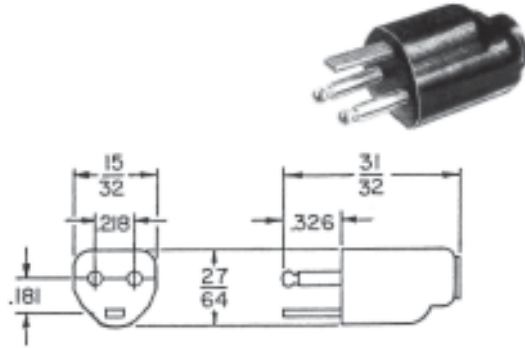
*Facilities  
Located in Stamford,  
Connecticut, USA*

# NEXUS



# Military Microphone Plugs and Jacks Three Conductor

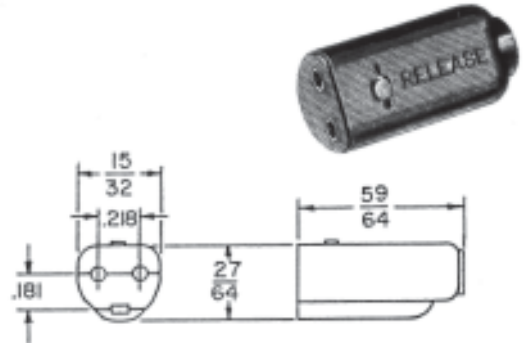
**MP-103**



## Microphone Plug, Three Conductor

Mates with Nexus MJ-103 microphone jack three conductor. Nickel plated beryllium copper and brass contacts assemble into nylon body.

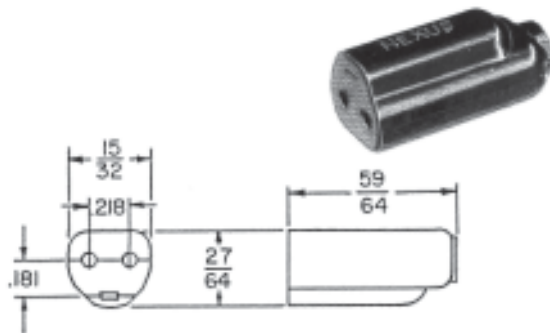
**MJ-103**



## Microphone Locking Jack, Three Conductor

Mates with Nexus MP-103 microphone plug, three conductor. Nickel plated beryllium copper contacts, spring actuated locking design iwth manual button release, assemble into nylon body.

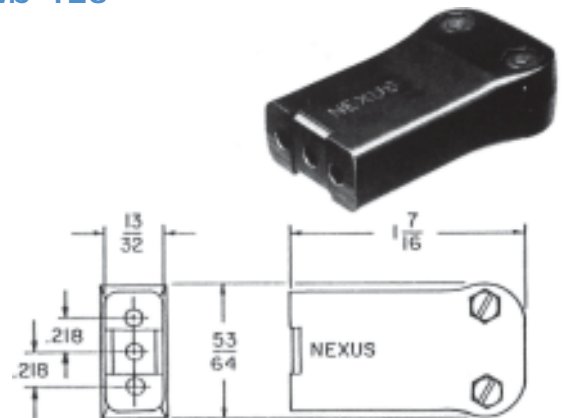
**MJ-113**



## Microphone Jack, Three Conductor

Mates with Nexus MP-103 microphone plug, three conductor. Same as MJ-103 but without locking contacts. Nickel plated beryllium contacts assemble into nylon body.

**MJ-123**



## Three Conductor Jack

Special three conductor jack, nickel plated contacts assemble into nylon body.

## Military Microphone Plugs and Jacks Three Conductor

### MJS-103

## Microphone Jack Switch

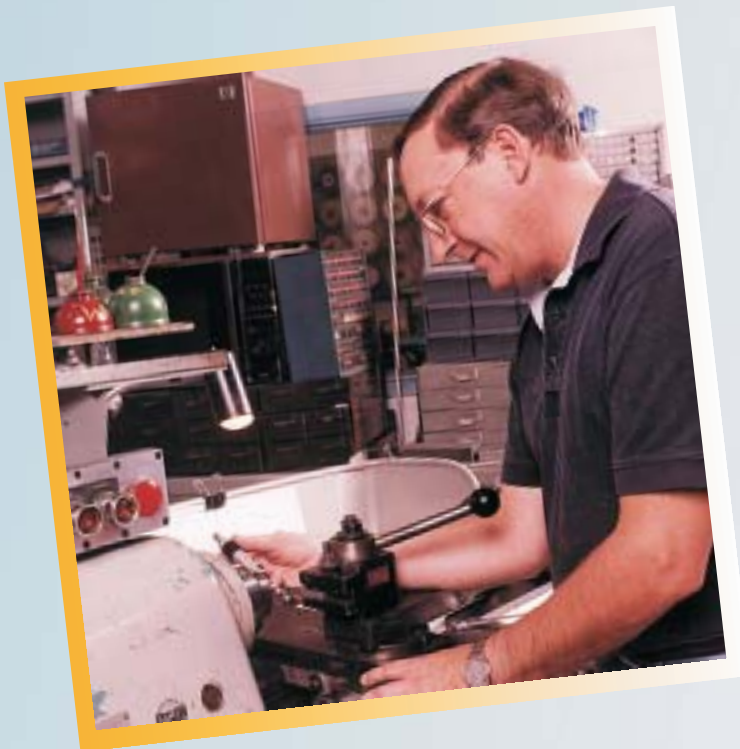
Functions as a selector switch to choose either a boom microphone or a gasmask microphone by use of the switch lever. Mating connectors are two Nexus MP-103 plugs and one MJ-103 locking jack. This switch will also function with Nexus MP-102 and MJ-102 if the third circuit is not required.

New Line  
of Miniatures



## Miniature Series Seven Conductor

For more information  
visit our website  
[www.nexus.com](http://www.nexus.com)



## Machining Capabilities

# NEXUS

# Military Plugs and Jacks Seven Conductor

**AP-107**



## Seven Conductor, Watertight Breakaway Plug

Mates with Nexus AJ-107 jack. A field replaceable connector designed to function in extremely severe environments.

**AJ-107**

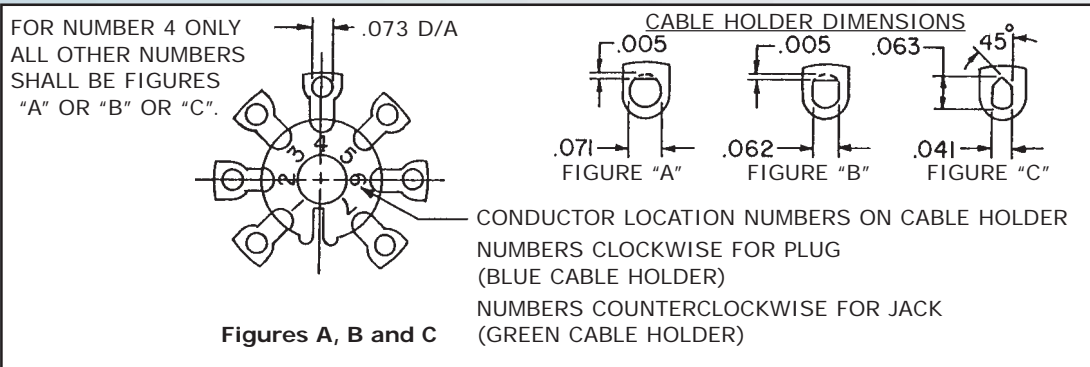


## Seven Conductor, Watertight Breakaway Jack

Mates with Nexus AP-107 plug. Designed to meet severe environmental conditions, it is field replaceable.

### HARNESS DATA

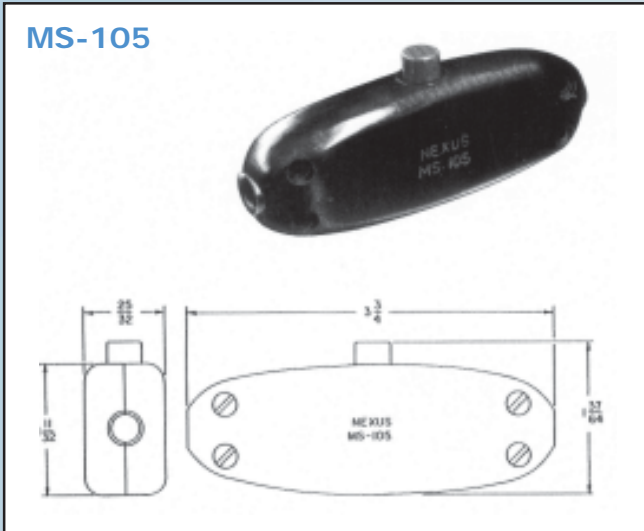
NEXUS PART NUMBER	CABLE HOLDER		CABLE SEAL	CABLE (6 CONDUCTOR) WITH SHIELD
	PART NUMBER	FIGURE BELOW		
AP-107XL AJ-107XL	AP-107-3BXL AJ-107-3GXL	A	AP-107-27	
AP-107XLS AJ-107XLS	AP-107-3BXLS AJ-107-3GXLS	B	AP-107-27	
AP-107 AJ-107	AP-107-3B AJ-107-3G	C	CUSTOMER MOLDS STRAIN RELIEF, THEN USES AP-107-27	
AP-107A AJ-107A	AP-107-3B AJ-107-3G	C	AP-107-31	





# Special Switches

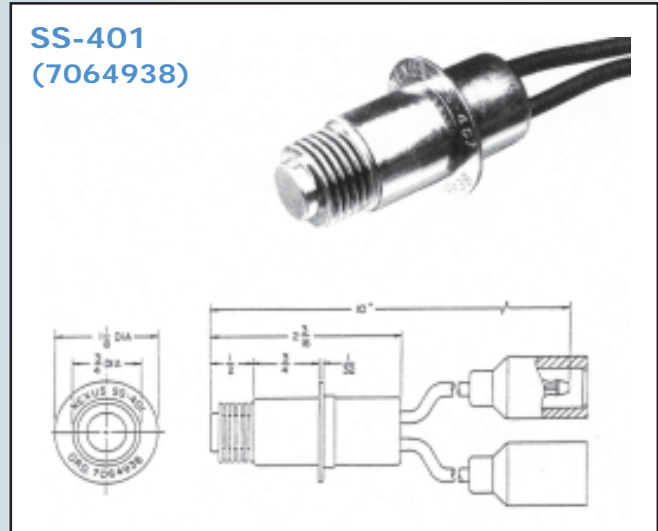
**MS-105**



## **In-Line Multi-Purpose Switch**

An in-line push button switch that is adaptable to a number of arrangements.

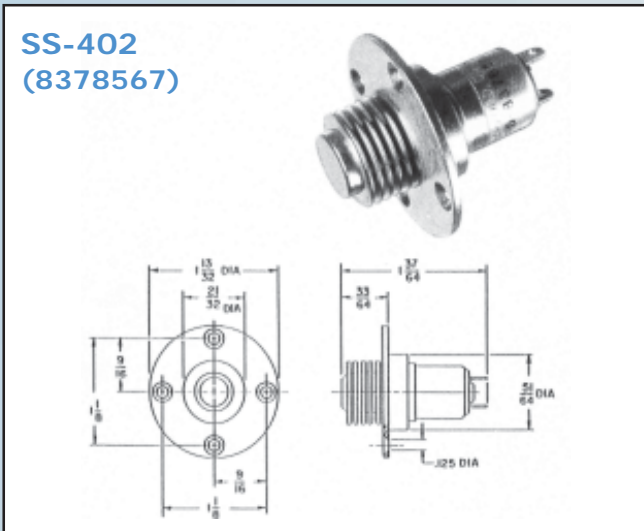
**SS-401  
(7064938)**



## **Push-Button Bellows Switch, Watertight**

Used in areas requiring a watertight push-button switch exposed to extreme environmental conditions. Approved by U.S. Army Tank-Automotive Material Readiness Command.

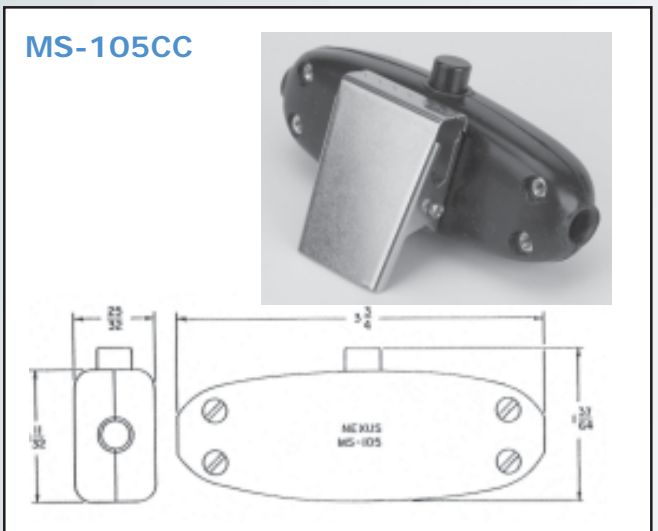
**SS-402  
(8378567)**



## **Push-Button Bellows Switch, Watertight**

Used in areas requiring a push-button switch exposed to extreme environmental conditions. Approved by U.S. Army Tank-Automotive Material Readiness Command.

**MS-105CC**



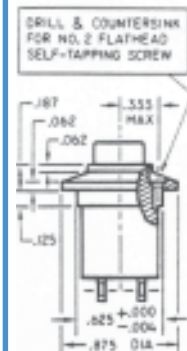
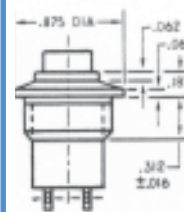
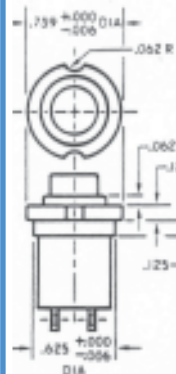
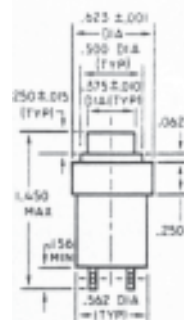
## **In-Line Multi-Purpose Switch with Clip**

An in-line push button switch that is adaptable to a number of arrangements.

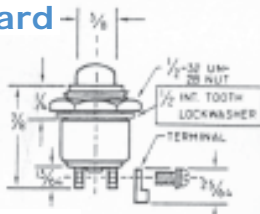
# NEXUS

## NEXUS Push-Button Series NX Switches

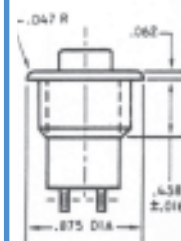
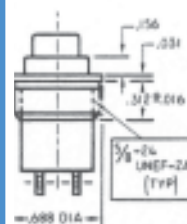
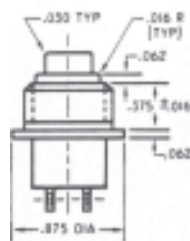
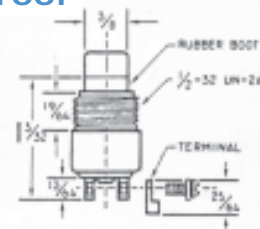
## TYPES OF ADAPTERS



**SERIES 200**  
**Standard** —



**SERIES 300**  
**Dustproof**



# NEXUS Push-Button Series NX Switches

## SPECIFICATIONS:

**AC Rating:** 10 amps at 115 vac (Resistive load)  
5 amps at 115 vac (Inductive load)  
3 amps at 115 vac (Lamp load)

**DC Rating:** 10 amps at 28 vdc (Resistive load)  
5 amps at 28 vdc (Inductive load)  
3 amps at 28 vdc (Lamp load)

### Type 7 Contact

**Arrangement:** Ratings are one half amperage

### Mechanical

**Life:** 500,000 cycles

**Action:** Momentary snap or push-pull (as specified)

### Plunger

**Travel:** .085 inch (approx.)

### Operating

#### Force:

Ser. 20 & 30 3 to 5 pounds momentary  
½ to 2 pounds push-pull

Ser. 22 & 32 2 to 3 pounds

**Weight:** .050 pound maximum

**Case:** Aluminum alloy, 2001 - T3, anodized in accordance with MIL-A-8625

**Plunger:** Glass filled nylon

**Body:** Diallyl phthalate in accordance with MIL-M-14

**Terminals:** Threaded 2-56 NC-2B

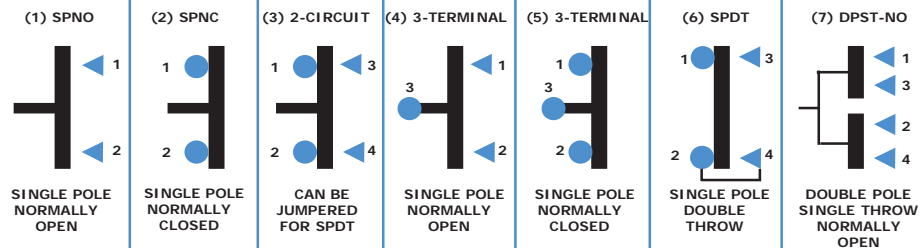
### Terminal

**Hardware:** Solder-type wire terminals, with terminal mounting screws and lockwashers, supplied with each switch

**Mounting:** Basic switch supplied with ½-32 UN-2B nut and internal tooth lockwasher. Switch with mounting adapter C, F, G or H supplied with 5/8-24 UNEF-2B nut and internal tooth lockwasher.

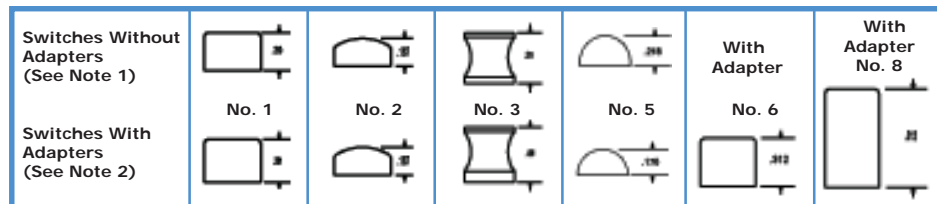
**Special:** Additional types of mounting, button styles, colors, and other variations are available on special order.

## CONTACT ARRANGEMENTS



## BUTTON STYLES

**1. SWITCHES WITHOUT ADAPTERS** — The button height dimension shown for both Series 300 switches is taken from top of rubber boot to top of button. Button numbers 1, 3 (push-pull), and 5 is for the Series 300 dustproof switches. The only button available for Series 200 switches is the Number 2. The button height dimension shown is taken from the top of the housing to the top of the button.



**2. SWITCHES WITH ADAPTERS** — The button height dimension shown for both series of switches is taken from top of adapter to top of button. Button numbers 1, 3 (push-pull), and 5 is for the Series 300 dustproof switches. Buttons 2, 6 and 8 are for the Series 200 standard switches.

# NEXUS



# How To Order

## SWITCH SERIES

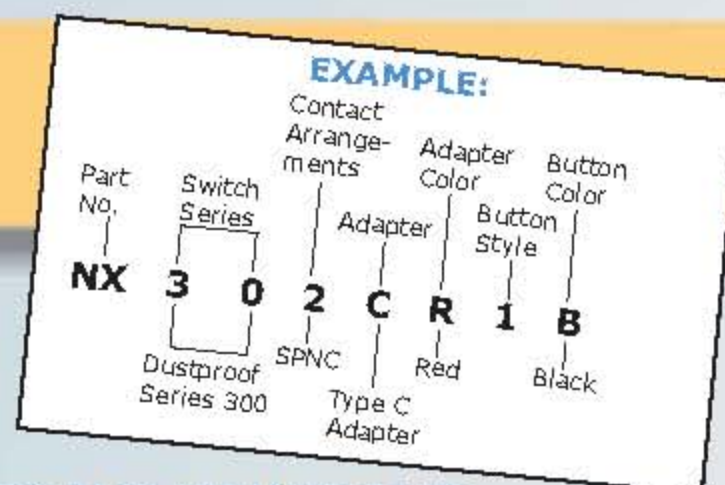
- 20 - Standard momentary or push-pull switches
- 22 - Standard switches with 2 -pound operating force
- 30 - Dustproof momentary or push-pull switches
- 32 - Dustproof switches with 2-pound operating force

## ADAPTER TYPE

- O - Basic switch (no adapter)
- A - Switch with MIL type A adapter
- B - Switch with MIL type B adapter
- C - Switch with MIL type C adapter
- E - Switch with MIL type E adapter
- F - Switch with MIL type F adapter
- G - Switch with MIL type G adapter
- H - Switch with MIL type H adapter

## ADAPTER COLOR

- B - Standard color, black
- R - Red
- C - Clear metal (aluminum)
- O - Without adapter



## CONTACT ARRANGEMENTS

- 1 - SPNO    Single pole, normally open
- 2 - SPNC    Single pole, normally closed
- 3 - 2-CIR    Two circuit
- 4 - 3-TNO    Three terminal, normally open
- 5 - 3-TNC    Three terminal, normally closed
- 6 - SPDT    Single pole, double throw
- 7 - DPST    Double pole, single throw, normally open








## BUTTON STYLE

Numbers 1 through 8, see Button Styles on page 19.

## BUTTON COLOR

- B - Standard color, black
- R - Red
- G - Gray
- W - White

For switches with configurations and characteristics covered by MILS-S-8805/3, use the following table to convert from MIL to NEXUS part numbers. Order the NEXUS switch number shown in BOLD FACE below the MS25089 number. For white buttons, substitute W for B in the NEXUS partnumber.

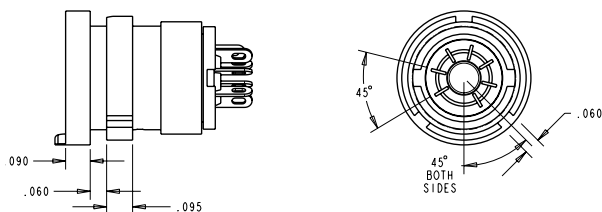
MOUNTING	SWITCH ACTION	BUTTON COLOR	CONTACT 1	CONTACT 2	CONTACT 3	CONTACT 4	CONTACT 5
<b>A</b> 	MOMENTARY	Black	MS25089-1A <b>NX301AB1B</b>	MS25089-2A <b>NX302AB1B</b>	MS25089-3A <b>NX303AB1B</b>	MS25089-4A <b>NX304AB1B</b>	MS25089-5A <b>NX305AB1B</b>
		Red	MS25089-1AR <b>NX301AB1R</b>	MS25089-2AR <b>NX302AB1R</b>	MS25089-3AR <b>NX303AB1R</b>	MS25089-4AR <b>NX304AB1R</b>	MS25089-5AR <b>NX305AB1R</b>
<b>B</b> 	MOMENTARY	Black	MS25089-1B <b>NX301BB1B</b>	MS25089-2B <b>NX302BB1B</b>	MS25089-3B <b>NX303BB1B</b>	MS25089-4B <b>NX304BB1B</b>	MS25089-5B <b>NX305BB1B</b>
		Red	MS25089-1BR <b>NX301BB1R</b>	MS25089-2BR <b>NX302BB1R</b>	MS25089-3BR <b>NX303BB1R</b>	MS25089-4BR <b>NX304BB1R</b>	MS25089-5BR <b>NX305BB1R</b>
<b>C</b> 	MOMENTARY	Black	MS25089-1C <b>NX301CB1B</b>	MS25089-2C <b>NX302CB1B</b>	MS25089-3C <b>NX303CB1B</b>	MS25089-4C <b>NX304CB1B</b>	MS25089-5C <b>NX305CB1B</b>
		Red	MS25089-1CR <b>NX301CB1R</b>	MS25089-2CR <b>NX302CB1R</b>	MS25089-3CR <b>NX303CB1R</b>	MS25089-4CR <b>NX304CB1R</b>	MS25089-5CR <b>NX305CB1R</b>
	PUSH-PULL	Black	MS25089-1C-1 <b>NX301CB3B</b>	MS25089-2C-1 <b>NX302CB3B</b>	MS25089-3C-1 <b>NX303CB3B</b>	N/A	N/A
		Red	MS25089-1CR-1 <b>NX301CB3R</b>	MS25089-2CR-1 <b>NX302CB3R</b>	MS25089-3CR-1 <b>NX303CB3R</b>	N/A	N/A
<b>E</b> 	MOMENTARY	Black	MS25089-1E <b>NX301EB1B</b>	MS25089-2E <b>NX302EB1B</b>	MS25089-3E <b>NX303EB1B</b>	MS25089-4E <b>NX304EB1B</b>	MS25089-5E <b>NX305EB1B</b>
		Red	MS25089-1ER <b>NX301EB1R</b>	MS25089-2ER <b>NX302EB1R</b>	MS25089-3ER <b>NX303EB1R</b>	MS25089-4ER <b>NX304EB1R</b>	MS25089-5ER <b>NX305EB1R</b>
<b>F</b> 	MOMENTARY	Black	MS25089-1F <b>NX301FB1B</b>	MS25089-2F <b>NX302FB1B</b>	MS25089-3F <b>NX303FB1B</b>	MS25089-4F <b>NX304FB1B</b>	MS25089-5F <b>NX305FB1B</b>
		Red	MS25089-1FR <b>NX301FB1R</b>	MS25089-2FR <b>NX302FB1R</b>	MS25089-3FR <b>NX303FB1R</b>	MS25089-4FR <b>NX304FB1R</b>	MS25089-5FR <b>NX305FB1R</b>
	PUSH-PULL	Black	MS25089-1F-1 <b>NX301FB3B</b>	MS25089-2F-1 <b>NX302FB3B</b>	MS25089-3F-1 <b>NX303FB3B</b>	N/A	N/A
		Red	MS25089-1FR-1 <b>NX301FB3R</b>	MS25089-2FR-1 <b>NX302FB3R</b>	MS25089-3FR-1 <b>NX303FB3R</b>	N/A	N/A
<b>G</b> 	MOMENTARY	Black	MS25089-1G <b>NX301GB1B</b>	MS25089-2G <b>NX302GB1B</b>	MS25089-3G <b>NX303GB1B</b>	MS25089-4G <b>NX304GB1B</b>	MS25089-5G <b>NX305GB1B</b>
		Red	MS25089-1GR <b>NX301GB1R</b>	MS25089-2GR <b>NX302GB1R</b>	MS25089-3GR <b>NX303GB1R</b>	MS25089-4GR <b>NX304GB1R</b>	MS25089-5GR <b>NX305GB1R</b>
	PUSH-PULL	Black	MS25089-1G-1 <b>NX301GB3B</b>	MS25089-2G-1 <b>NX302GB3B</b>	MS25089-3G-1 <b>NX303GB3B</b>	N/A	N/A
		Red	MS25089-1GR-1 <b>NX301GB3R</b>	MS25089-2GR-1 <b>NX302GB3R</b>	MS25089-3GR-1 <b>NX303GB3R</b>	N/A	N/A
<b>H</b> 	MOMENTARY	Black	MS25089-1H <b>NX301HB1B</b>	MS25089-2H <b>NX302HB1B</b>	MS25089-3H <b>NX303HB1B</b>	MS25089-4H <b>NX304HB1B</b>	MS25089-5H <b>NX305HB1B</b>
		Red	MS25089-1HR <b>NX301HB1R</b>	MS25089-2HR <b>NX302HB1R</b>	MS25089-3HR <b>NX303HB1R</b>	MS25089-4HR <b>NX304HB1R</b>	MS25089-5HR <b>NX305HB1R</b>
	PUSH-PULL	Black	MS25089-1H-1 <b>NX301HB3B</b>	MS25089-2H-1 <b>NX302HB3B</b>	MS25089-3H-1 <b>NX303HB3B</b>	N/A	N/A
		Red	MS25089-1HR-1 <b>NX301HB3R</b>	MS25089-2HR-1 <b>NX302HB3R</b>	MS25089-3HR-1 <b>NX303HB3R</b>	N/A	N/A



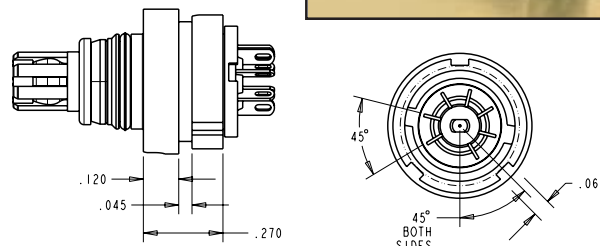
# Miniature Series Seven Conductor

## NEW LINE OF MINIATURES!

**AP-117OM**



**AJ-117OM**



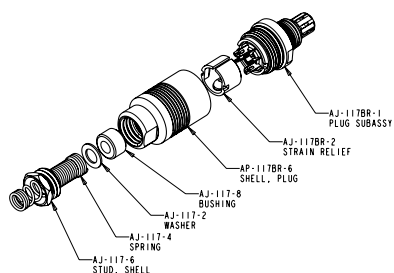
### Seven Conductor, Miniature Waterproof Plug

Over mold version, solder terminals, mates with all versions of the AJ-117.

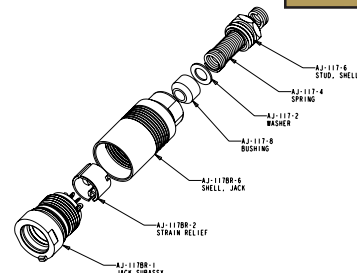
### Seven Conductor, Miniature Waterproof Jack

Over mold version, solder terminals, mates with all versions of the AP-117.

**AP-117BR**



**AJ-117BR**



### Seven Conductor, Miniature Waterproof Plug

Wire strain relief and solder terminals, .148" max cable diameter, mates with AJ-117BR, AJ-117BRXL and AJ-117OM.

### Seven Conductor, Miniature Waterproof Jack

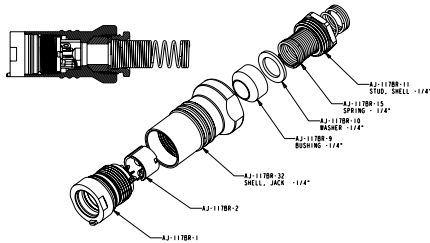
Wire strain relief and solder terminals, .148" max cable diameter, mates with AP-117BR, AP-117BRXL and AP-117OM.

# NEXUS

# NEW LINE OF MINIATURES!

## Miniature Series Seven Conductor

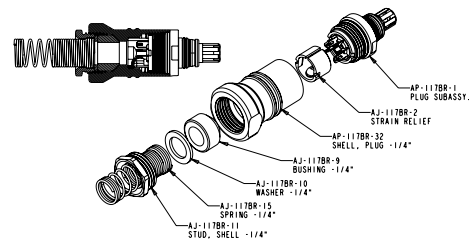
**AJ-117BRXL**



### Seven Conductor, Miniature Waterproof Jack

Wire strain relief and solder terminals, .250" max cable diameter, mates with AP-117BRXL, AP-117BR and AP-117OM.

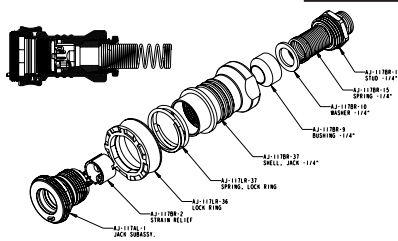
**AP-117BRXL**



### Seven Conductor, Miniature Waterproof Plug

Wire strain relief and solder terminals, .250" max cable diameter, mates with AJ-117BRXL, AJ-117BR and AJ-117OM.

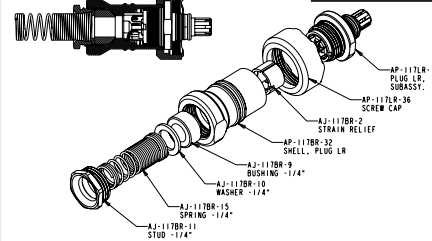
**AJ-117LR-AL**



### Seven Conductor, Miniature Waterproof Jack

With locking ring, wire strain relief and solder terminals, .250" max cable diameter, mates with AP-117LR-AL.

**AP-117LR-AL**



### Seven Conductor, Miniature Waterproof Plug

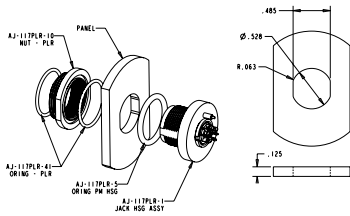
With locking ring, wire strain relief and solder terminals, .250" max cable diameter, mates with AJ-117LR-AL.



# Miniature Series Seven Conductor

**NEW LINE  
OF MINIATURES!**

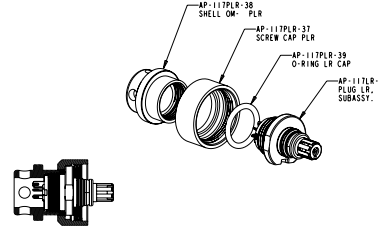
**AJ-117PLR**



## Seven Conductor, Miniature Waterproof Jack

Panel mount from rear of panel, with locking ring, solder terminals, mates with AP-117PLR.

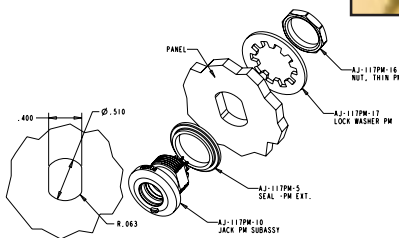
**AP-117PLR**



## Seven Conductor Miniature Waterproof Plug

Over mold plug with locking ring, solder terminals, mates with AJ-117PLR.

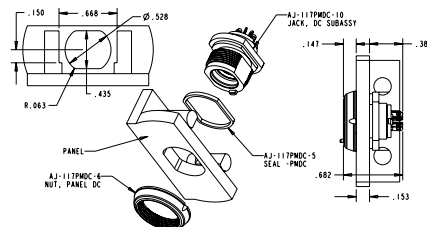
**AJ-117PM**



## Seven Conductor, Miniature Waterproof Jack

Panel mount from front of panel, solder terminals, mates with all versions of the AP-117. Nut and lockwasher are included.

**AJ-117PMDC**



## Seven Conductor, Miniature Waterproof Jack

Panel mount from rear of panel, solder terminals, mates with all versions of the AP-117.

# NEXUS

# Introducing . . .

## Miniature Break-Away Waterproof 10 Pin Connectors



Same characteristics  
as larger connectors but  
**SMALLER**



Компания «Life Electronics» занимается поставками электронных компонентов импортного и отечественного производства от производителей и со складов крупных дистрибьюторов Европы, Америки и Азии.

С конца 2013 года компания активно расширяет линейку поставок компонентов по направлению коаксиальный кабель, кварцевые генераторы и конденсаторы (керамические, пленочные, электролитические), за счёт заключения дистрибьюторских договоров

Мы предлагаем:

- Конкурентоспособные цены и скидки постоянным клиентам.
- Специальные условия для постоянных клиентов.
- Подбор аналогов.
- Поставку компонентов в любых объемах, удовлетворяющих вашим потребностям.
- Приемлемые сроки поставки, возможна ускоренная поставка.
- Доставку товара в любую точку России и стран СНГ.
- Комплексную поставку.
- Работу по проектам и поставку образцов.
- Формирование склада под заказчика.
- Сертификаты соответствия на поставляемую продукцию (по желанию клиента).
- Тестирование поставляемой продукции.
- Поставку компонентов, требующих военную и космическую приемку.
- Входной контроль качества.
- Наличие сертификата ISO.

В составе нашей компании организован Конструкторский отдел, призванный помогать разработчикам, и инженерам.

Конструкторский отдел помогает осуществить:

- Регистрацию проекта у производителя компонентов.
- Техническую поддержку проекта.
- Защиту от снятия компонента с производства.
- Оценку стоимости проекта по компонентам.
- Изготовление тестовой платы монтаж и пусконаладочные работы.



Тел: +7 (812) 336 43 04 (многоканальный)

Email: [org@lifeelectronics.ru](mailto:org@lifeelectronics.ru)

[www.lifeelectronics.ru](http://www.lifeelectronics.ru)