

**PLEASE CHECK WWW.MOLEX.COM FOR LATEST PART INFORMATION**

**Part Number:** [0919150001](#)  
**Status:** **Active**  
**Description:** 2.54mm (.100") Pitch SIM Card Connector, Lead Free

**Documents:**

[3D Model](#) [Product Specification PS-91915-001 \(PDF\)](#)  
[Drawing \(PDF\)](#) [RoHS Certificate of Compliance \(PDF\)](#)

**General**

Product Family	Memory Card Sockets
Series	<a href="#">91915</a>
Button Type	N/A
Component Type	I/O Header (Card)
Product Name	SIM
Type	N/A

**Physical**

Card Detection Switch	Yes
Circuits (Loaded)	6
Color - Resin	Black
Durability (mating cycles max)	10,000
Ejector Button Side	No Ejector Button Present
Entry Angle	Vertical
Keying to Mating Part	Yes
Material - Metal	Phosphor Bronze
Material - Plating Mating	Gold
Material - Plating Termination	Tin
Material - Resin	High Temperature Thermoplastic
PCB Mounting Side	Reverse
PCB Retention	None
Packaging Type	Embossed Tape on Reel
Pitch - Mating Interface (in)	0.100 In
Pitch - Mating Interface (mm)	2.54 mm
Plating min: Mating (µin)	4
Plating min: Mating (µm)	0.1
Plating min: Termination (µin)	120
Plating min: Termination (µm)	3
Ports	8
Temperature Range - Operating	-40°C to +85°C
Termination Interface: Style	Surface Mount

**Electrical**

Current - Maximum per Contact	0.5A
Voltage - Maximum	15V

**Solder Process Data**

Lead-free Process Capability	Reflow Capable (SMT only)
Max. Cycles at Max. Process Temperature	2
Process Temperature max. C	240

**Material Info**

**Reference - Drawing Numbers**

Product Specification	PS-91915-001
Sales Drawing	SD-91915-001, SD-91915-003

**EU RoHS**

**ELV and RoHS  
Compliant**

**REACH SVHC**

**Contains SVHC: No**

**Halogen-Free**

**Status**

**Not Reviewed**

**China RoHS**



**Need more information on product  
environmental compliance?**

Email [productcompliance@molex.com](mailto:productcompliance@molex.com)  
 For a multiple part number RoHS Certificate of  
 Compliance, [click here](#)

Please visit the [Contact Us](#) section for any  
 non-product compliance questions.

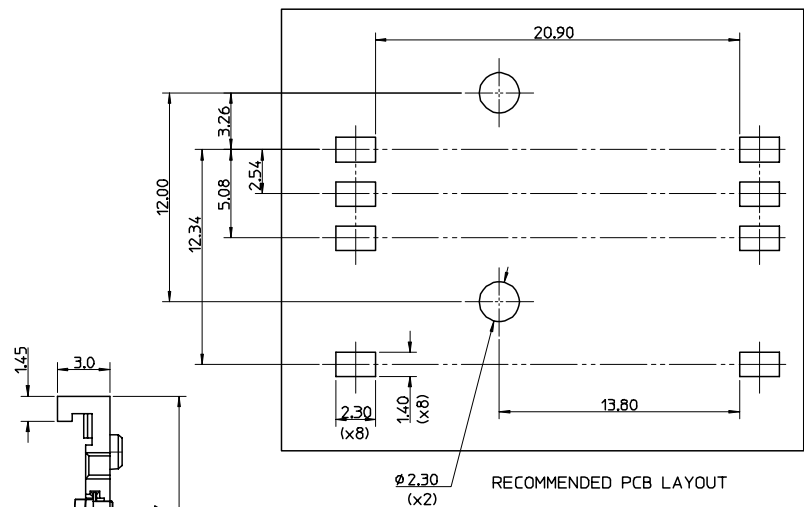
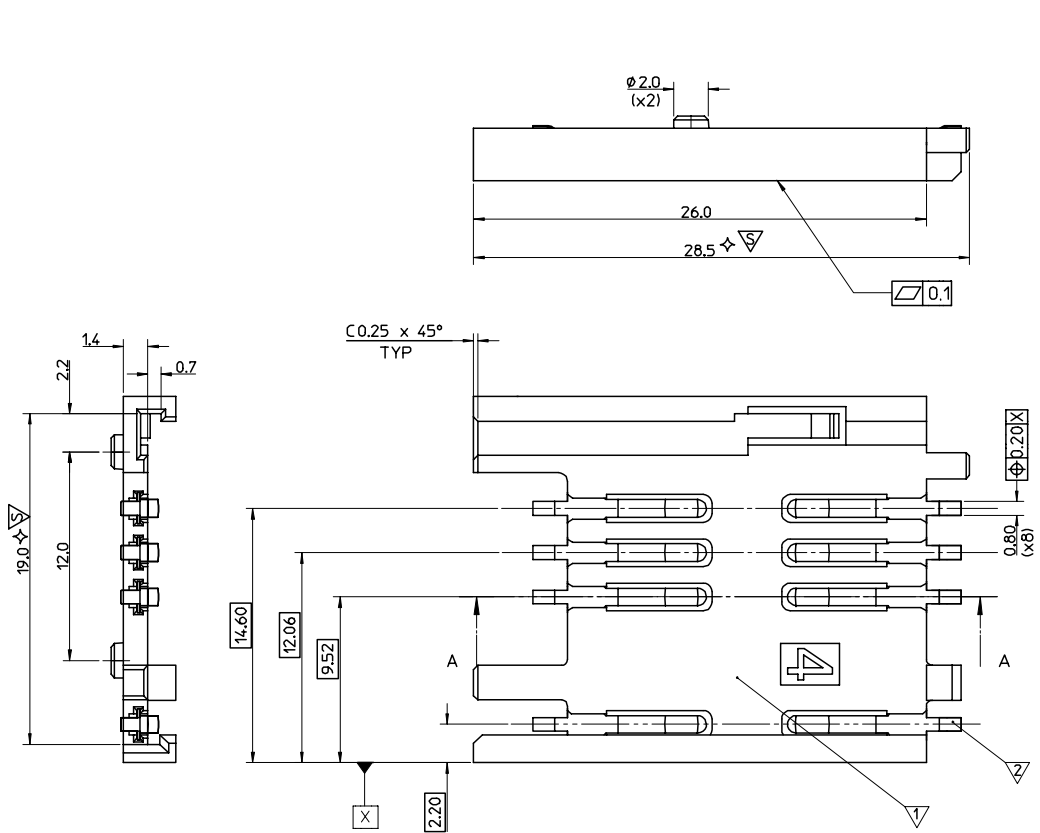
**Search Parts in this Series**

[91915Series](#)

This document was generated on 04/13/2010

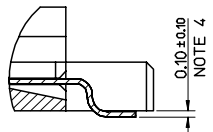
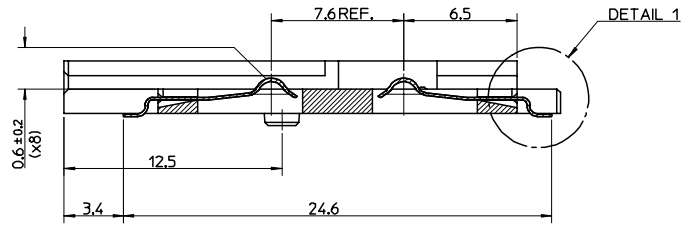
**PLEASE CHECK [WWW.MOLEX.COM](http://WWW.MOLEX.COM) FOR LATEST PART INFORMATION**

13 12 11 10 9 8 7 6 5 4 3 2 1



- NOTES:
1. PACKAGING: PARTS TO BE PACKAGED IN TAPE & REEL. SEE DRAWING SD-91915-003
  2. SEE PRODUCT SPECIFICATION PS-91915-001
  3. ⚡ THIS IS A CUSTOMER SPECIFIC SYMBOL
  4. TAILS ON EACH SIDE OF CONNECTOR TO LIE WITHIN 0.12mm OF EACH OTHER.

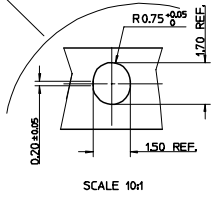
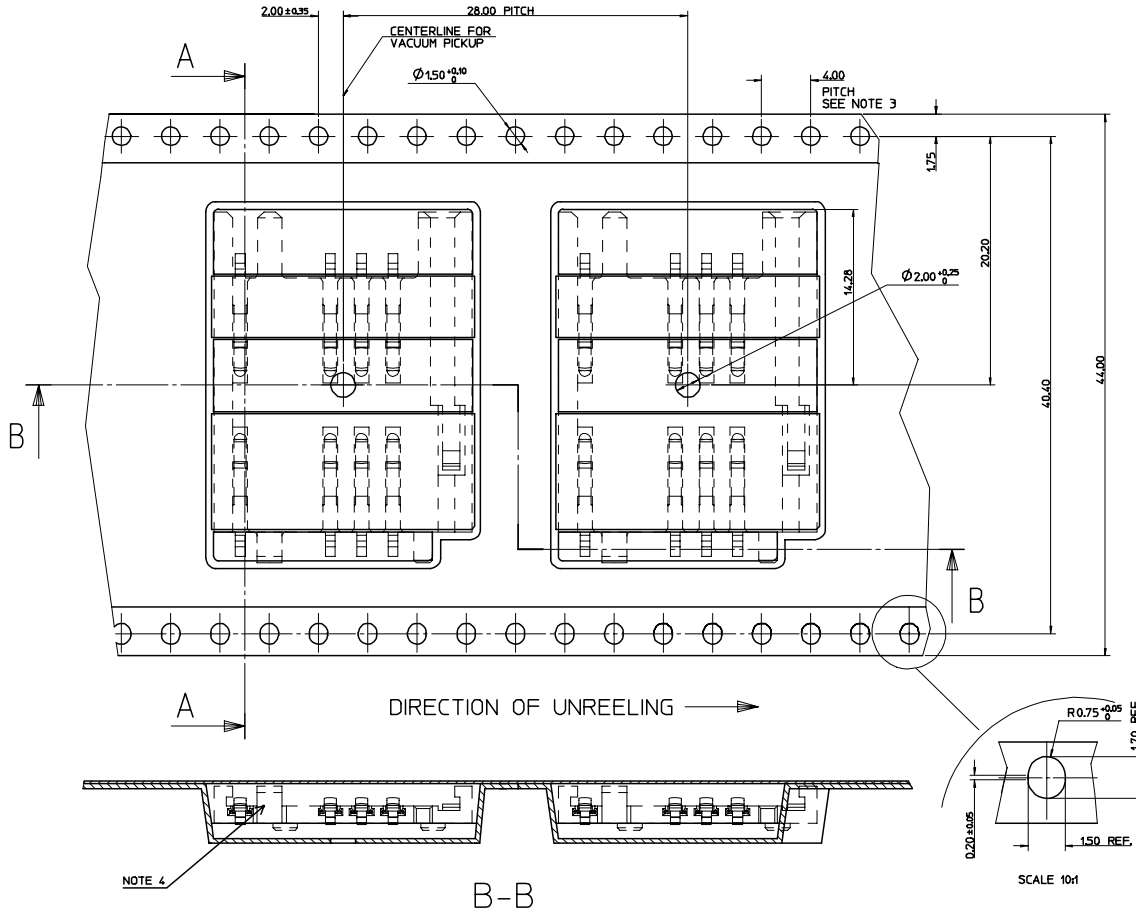
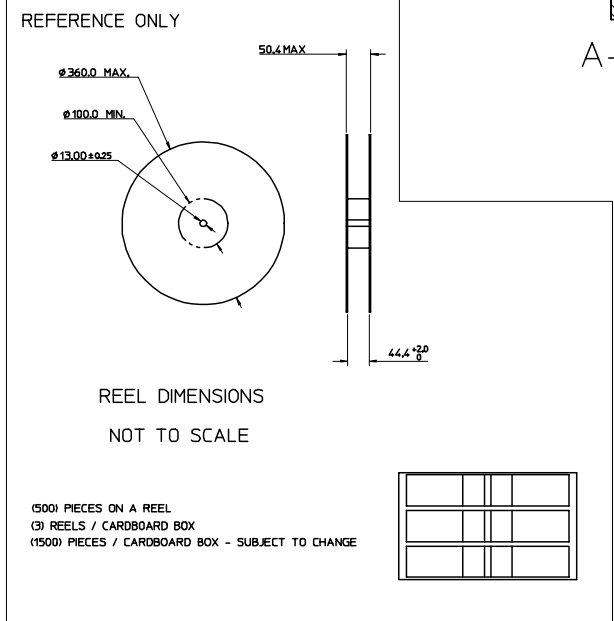
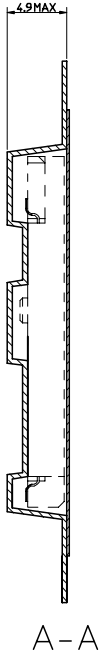
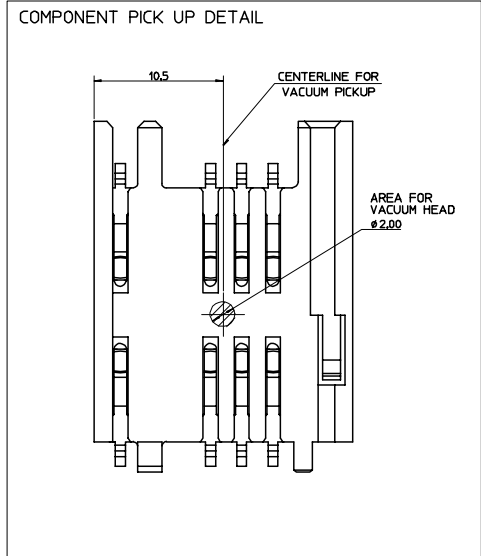
ITEM	COMPONENT	QTY	MATERIAL
▽	HOUSING	1	LCP E130i, UL94 V-0, COLOUR BLACK RoHS & LEAD FREE COMPLIANT
▽	TERMINAL	8	0.15 PHOSPHOR BRONZE Au FLASH OVER Pd/Ni Sn ON SMT TAILS



COPLANARITY DETAIL 1

ORIGINAL RELEASE EIC NO: E2006-1110 DRAWN: CARTON 2007/02/14 CHKD: 2007/02/15 APPR: EFOLAN 2007/02/23 REV: A	QUALITY SYMBOLS	GENERAL TOLERANCES (UNLESS SPECIFIED)	DIMENSION STYLE	SCALE	DESIGN UNITS	THIRD ANGLE PROJECTION	
	▽=0	4 PLACES ± --- ± ---	MM ONLY	1:1	METRIC		
	▽=0	3 PLACES ± --- ± ---					
	▽=3	2 PLACES ± 0.05 ± ---					
		1 PLACE ± 0.10 ± ---					
		ANGULAR ± 2 °					
		DRAFT WHERE APPLICABLE MUST REMAIN WITHIN DIMENSIONS					
			DRAWN BY DATE	TITLE	2.54 PITCH SIM CONNECTOR		
			DMAHER 2006/11/28		MOLEX INCORPORATED		
			CHECKED BY DATE		SD-91915-001		
			FUGGAN 2006/11/28		SHEET NO. 1 OF 1		
			APPROVED BY DATE				
			EFOLAN 2006/11/28				
			MATERIAL NO.	DOCUMENT NO.			
			91915 0001	SD-91915-001			
			THIS DRAWING CONTAINS INFORMATION THAT IS PROPRIETARY TO MOLEX INCORPORATED AND SHOULD NOT BE USED WITHOUT WRITTEN PERMISSION				

12 11 10 9 8 7 6 5 4 3 2 1



- NOTES:
- MATERIAL:  
CARRIER TAPE: VOLUME CONDUCTIVE POLYSTYRENE, 0.40 REF THICK, BLACK  
COVER TAPE: COLD SEAL POLYESTER, 0.06 REF THICK, TRANSPARENT
  - PEEL FORCE OF THE COVER TAPE IS 0.1N TO 1.0N  
AT MAXIMUM PEEL SPEED OF 300mm/min.  $\pm 10\%$
  - PITCH TOLERANCE OVER ANY 10 PITCHES  $\pm 0.2$
  - TAPE & REEL PACKAGING FOR PART NUMBERS 919150001 & 919150002.

TO CUSTOMER ASSEMBLY MACHINE

ORIGINAL RELEASE EC NO: E2006-110 DRAWN/CARTON 2007/02/14 CHKD: APPR:	QUALITY SYMBOLS	GENERAL TOLERANCES (UNLESS SPECIFIED)	SCALE 4:1	DESIGN UNITS METRIC	THIRD ANGLE PROJECTION	REVISE ON CAD ONLY															
	DESCRIPTION REV: A	<table border="1"> <tr> <th></th> <th>mm</th> <th>INCH</th> </tr> <tr> <td>4 PLACES</td> <td><math>\pm 0.10</math></td> <td><math>\pm 0.004</math></td> </tr> <tr> <td>3 PLACES</td> <td><math>\pm 0.15</math></td> <td><math>\pm 0.005</math></td> </tr> <tr> <td>2 PLACES</td> <td><math>\pm 0.20</math></td> <td><math>\pm 0.008</math></td> </tr> <tr> <td>1 PLACE</td> <td><math>\pm 0.25</math></td> <td><math>\pm 0.010</math></td> </tr> </table>		mm	INCH	4 PLACES	$\pm 0.10$	$\pm 0.004$	3 PLACES	$\pm 0.15$	$\pm 0.005$	2 PLACES	$\pm 0.20$	$\pm 0.008$	1 PLACE	$\pm 0.25$	$\pm 0.010$	DIMENSION STYLE <b>MM ONLY</b>	TITLE <b>BLISTER PACKAGING SIM CONNECTOR</b>		
			mm	INCH																	
		4 PLACES	$\pm 0.10$	$\pm 0.004$																	
3 PLACES	$\pm 0.15$	$\pm 0.005$																			
2 PLACES	$\pm 0.20$	$\pm 0.008$																			
1 PLACE	$\pm 0.25$	$\pm 0.010$																			
DRAFT WHERE APPLICABLE MUST REMAIN WITHIN DIMENSIONS		APPROVED BY EFOLAN	DATE 2006/11/28	MATERIAL NO. NOTE 4	DOCUMENT NO. SD-91915-003	SHEET NO. 1 OF 1															
THIS DRAWING CONTAINS INFORMATION THAT IS PROPRIETARY TO MOLEX INCORPORATED AND SHOULD NOT BE USED WITHOUT WRITTEN PERMISSION																					

Компания «Life Electronics» занимается поставками электронных компонентов импортного и отечественного производства от производителей и со складов крупных дистрибьюторов Европы, Америки и Азии.

С конца 2013 года компания активно расширяет линейку поставок компонентов по направлению коаксиальный кабель, кварцевые генераторы и конденсаторы (керамические, пленочные, электролитические), за счёт заключения дистрибьюторских договоров

Мы предлагаем:

- Конкурентоспособные цены и скидки постоянным клиентам.
- Специальные условия для постоянных клиентов.
- Подбор аналогов.
- Поставку компонентов в любых объемах, удовлетворяющих вашим потребностям.
- Приемлемые сроки поставки, возможна ускоренная поставка.
- Доставку товара в любую точку России и стран СНГ.
- Комплексную поставку.
- Работу по проектам и поставку образцов.
- Формирование склада под заказчика.
- Сертификаты соответствия на поставляемую продукцию (по желанию клиента).
- Тестирование поставляемой продукции.
- Поставку компонентов, требующих военную и космическую приемку.
- Входной контроль качества.
- Наличие сертификата ISO.

В составе нашей компании организован Конструкторский отдел, призванный помогать разработчикам, и инженерам.

Конструкторский отдел помогает осуществить:

- Регистрацию проекта у производителя компонентов.
- Техническую поддержку проекта.
- Защиту от снятия компонента с производства.
- Оценку стоимости проекта по компонентам.
- Изготовление тестовой платы монтаж и пусконаладочные работы.



Тел: +7 (812) 336 43 04 (многоканальный)

Email: [org@lifeelectronics.ru](mailto:org@lifeelectronics.ru)