

# Photologic® Slotted Optical Switch



## OPB916 Series

### Features:

- Low power consumption
- Data rates to 250 kBaud
- Choice of two logic states and two electrical outputs
- 24" (610 mm) minimum 26 AWG UL listed wires
- Slot width 0.20" (5.08 mm)
- Slot Depth 0.635" (16.13 mm)



### Description:

The **OPB916** series of Photologic® photo integrated circuit switches provide optimum flexibility. Each switch consists of an infrared Light Emitting Diode (LED) and a Photologic® photo integrated circuit, mounted in an opaque housing with clear windows for dust protection. The deep slot allows for a longer reach of the optical path from the 0.650" (16.5 mm) mounting plane. Internal apertures are 0.010" x .060" (.25 mm x 1.52 mm) for the Photologic's "S" side and 0.05" x 0.06" (1.27 mm x 1.52 mm) for the LED "E" side.

Devices in this series exhibit stable performance over supply voltages ranging from 4.5 V to 16.0 V, and may be specified as buffered or inverted with an internal 10 kΩ pull-up resistor or open collector output. Devices are TTL/LSTTL compatible and can drive up to 10 TTL loads.

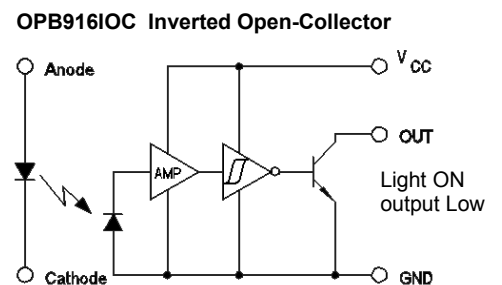
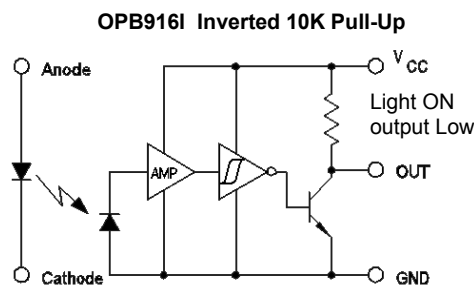
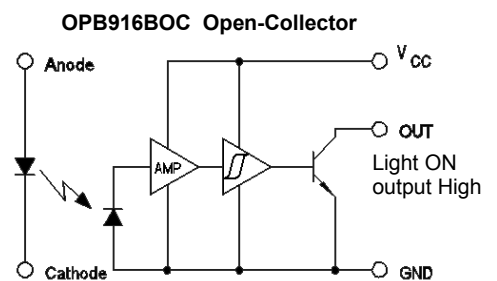
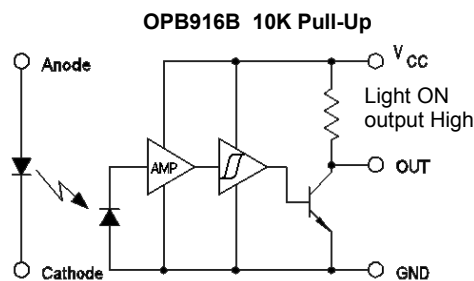
Custom electrical, wire or cabling are available. Contact your local representative or OPTEK for more information.

### Applications:

- Mechanical switch replacement
- Speed indication (tachometer)
- Mechanical limit indication
- Edge sensing

Ordering Information					
Part Number	LED Peak Wavelength	Sensor Photologic®	Slot Width / Depth	Aperture Emitter / Sensor	Lead Length / Wire
OPB916BZ	880 nm	10K Pull-Up	0.200" / 0.635"	0.05" / 0.01"	24" / 26 AWG Wire
OPB916IZ		Inv-10K Pull-Up			
OPB916BOCZ		Open-Collector			

Color	Description
Red	Anode
Black	Cathode
White	Vcc
Blue	Output
Green	Ground

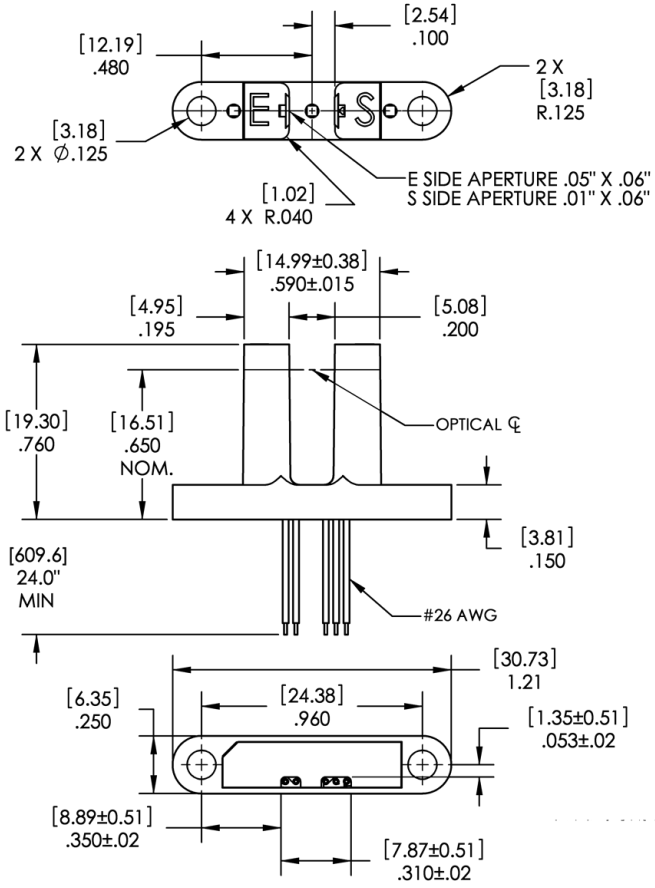


### General Note

TT Electronics reserves the right to make changes in product specification without notice or liability. All information is subject to TT Electronics' own data and is considered accurate at time of going to print.

OPTEK Technology, Inc.  
1645 Wallace Drive, Carrollton, TX 75006 | Ph: +1 972 323 2200  
www.optekinc.com | www.ttelectronics.com

# Photologic® Slotted Optical Switch



Color-Pin #	Description
Red	Anode
Black	Cathode
Green	Ground
Blue	Output
White	V <sub>CC</sub>

Tolerance ±0.010 [0.254]

DIMENSIONS ARE IN: [ MILLIMETERS ]  
[ INCHES ]

Absolute Maximum Ratings (T <sub>A</sub> = 25° C unless otherwise noted)	
Storage & Operating Temperature Range	-40°C to +80°C
<b>Input Infrared LED</b>	
Diode Reverse DC Voltage	2 V
Input Diode Power Dissipation <sup>(2)</sup>	75 mW
Forward DC Current	50 mA
<b>Output Photologic®</b>	
Supply Voltage, V <sub>CC</sub> (not to exceed 3 seconds)	18 V
Voltage at Output Lead (Open Collector Output)	30 V
Output Photologic® Power Dissipation <sup>(3)</sup>	90 mW

- Notes:
- (1) RMA flux is recommended. Duration can be extended to 10 seconds maximum when flow soldering.
  - (2) Derate linearly 1.67 mW/°C above 25°.
  - (3) Derate linearly 2.67 mW/°C above 25°.
  - (4) Normal application would be with light source blocked, simulated by I<sub>F</sub> = 0 mA.
  - (5) All parameters tested using pulse technique.

General Note  
TT Electronics reserves the right to make changes in product specification without notice or liability. All information is subject to TT Electronics' own data and is considered accurate at time of going to print.

OPTEK Technology, Inc.  
1645 Wallace Drive, Carrollton, TX 75006 | Ph: +1 972 323 2200  
www.optekinc.com | www.ttelectronics.com

Electrical Characteristics (T <sub>A</sub> = 25° C unless otherwise noted)						
SYMBOL	PARAMETER	MIN	TYP	MAX	UNITS	TEST CONDITIONS
<b>Input Diode</b>						
V <sub>F</sub>	Forward Voltage	-	1.3	1.8	V	I <sub>F</sub> = 20 mA
I <sub>R</sub>	Reverse Current	-	-	100	μA	V <sub>R</sub> = 2 V, T <sub>A</sub> = 25° C
<b>Output Photologic® Sensor</b>						
V <sub>CC</sub>	Operating DC Supply Voltage	4.5	-	16	V	-
I <sub>CCL</sub>	Low Level Supply Current: Buffered with 10k pull-up <sup>(1)</sup> Buffered Open-Collector Output <sup>(1)</sup>	-	-	7	mA	V <sub>CC</sub> = 16 V, I <sub>F</sub> = 0 mA, No Output Load
	Inverted with 10k pull-up: Inverted Open-Collector Output	-	-	7	mA	V <sub>CC</sub> = 16 V, I <sub>F</sub> = 10 mA, No Output Load
I <sub>CCH</sub>	High Level Supply Current: Buffered with 10k pull-up Buffered Open-Collector Output	-	-	6	mA	V <sub>CC</sub> = 16 V, I <sub>F</sub> = 10 mA, No Output Load
	Inverted with 10k pull-up: Inverted Open-Collector Output <sup>(1)</sup>	-	-	6	mA	V <sub>CC</sub> = 16 V, I <sub>F</sub> = 0 mA, No Output Load
V <sub>OL</sub>	Low Level Output Voltage: Buffered with 10k pull-up Buffered Open-Collector Output	-	-	0.4	V	V <sub>CC</sub> = 4.5 V, I <sub>OL</sub> = 16 mA, I <sub>F</sub> = 0 mA
	Inverted with 10k pull-up: Inverted Open-Collector Output	-	-	0.4	V	V <sub>CC</sub> = 4.5 V, I <sub>OL</sub> = 16 mA, I <sub>F</sub> = 10 mA
V <sub>OH</sub>	High Level Output Voltage: Buffered with 10k pull-up	V <sub>CC</sub> - 2.0	-	-	V	V <sub>CC</sub> = 4.5 V to 16 V, I <sub>F</sub> = 10 mA, I <sub>OH</sub> = 100 μA
	Inverted with 10k pull-up:	V <sub>CC</sub> - 2.0	-	-	V	V <sub>CC</sub> = 4.5 V to 16 V, I <sub>F</sub> = 0 mA,
I <sub>OH</sub>	High Level Output Current: Buffered with 10k pull-up Buffered Open-Collector Output	-	1.0	10	μA	V <sub>CC</sub> = 4.5 V, I <sub>F</sub> = 10 mA, V <sub>OH</sub> = 30 V
	Inverted with 10k pull-up: Inverted Open-Collector Output <sup>(1)</sup>	-	1.0	10	μA	V <sub>CC</sub> = 4.5 V, I <sub>F</sub> = 0 mA, V <sub>OH</sub> = 30 V

**General Note**

TT Electronics reserves the right to make changes in product specification without notice or liability. All information is subject to TT Electronics' own data and is considered accurate at time of going to print.

OPTEK Technology, Inc.  
1645 Wallace Drive, Carrollton, TX 75006 | Ph: +1 972 323 2200  
www.optekinc.com | www.ttelectronics.com

## Electrical Characteristics (T<sub>A</sub> = 25° C unless otherwise noted)

SYMBOL	PARAMETER	MIN	TYP	MAX	UNITS	TEST CONDITIONS
<b>Output Photologic® Sensor</b>						
I <sub>F(+)</sub>	LED Positive-Going Threshold Current Buffered with 10k pull-up Inverted with 10k pull-up	-	5	10	mA	V <sub>CC</sub> = 5 V, No Output Load
	Buffered Open-Collector Output Inverted Open-Collector Output <sup>(1)</sup>	-	5	10	mA	V <sub>CC</sub> = 4.5 V, I <sub>OL</sub> = 16 mA
I <sub>F(+)</sub> /I <sub>F(-)</sub>	Hysteresis	-	1.5	-	-	V <sub>CC</sub> = 5 V
t <sub>r</sub> , t <sub>f</sub>	Rise Time, Fall Time	-	50	-	ns	V <sub>CC</sub> = 5 V, I <sub>F</sub> = 0 or 10 mA,
t <sub>PLH</sub> , t <sub>PHL</sub>	Propagation Delay	-	3	-	μs	R <sub>L</sub> = 300 Ω to 5 V, C <sub>L</sub> = 50 pF

### Notes:

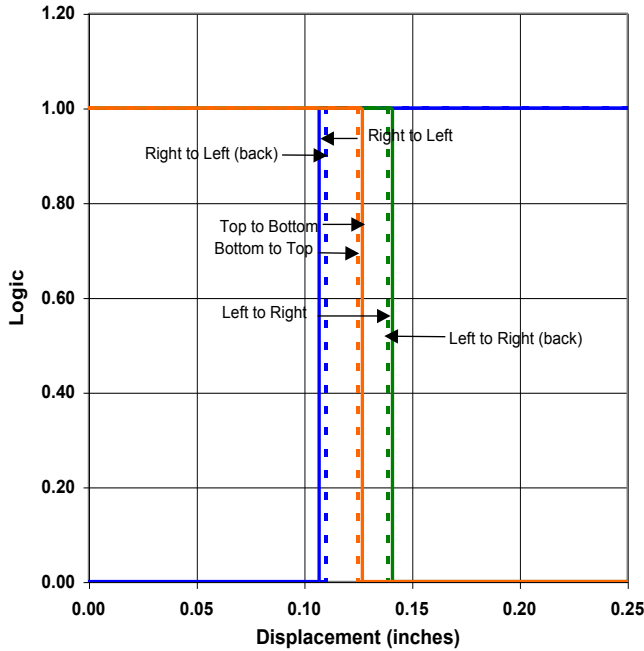
- (1) Normal application would be with light source blocked, simulated by I<sub>F</sub> = 0 mA.
- (2) All parameters tested using pulse technique.

### General Note

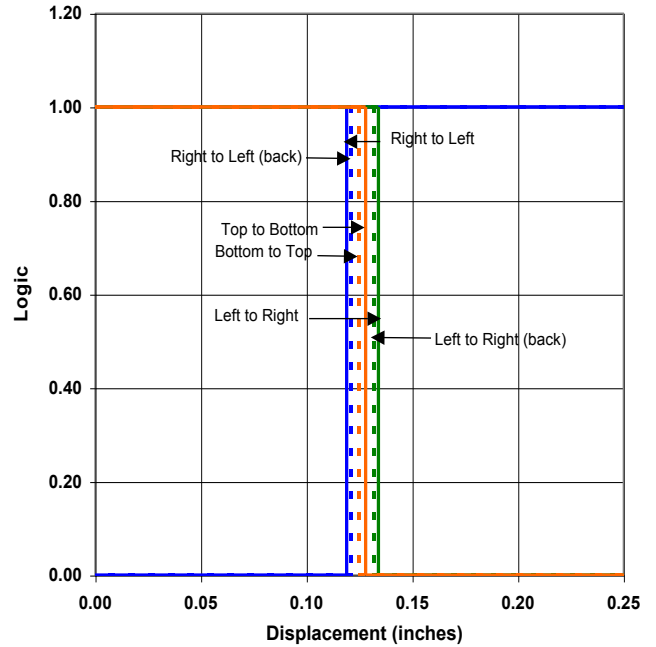
TT Electronics reserves the right to make changes in product specification without notice or liability. All information is subject to TT Electronics' own data and is considered accurate at time of going to print.

OPTEK Technology, Inc.  
1645 Wallace Drive, Carrollton, TX 75006 | Ph: +1 972 323 2200  
www.optekinc.com | www.ttelectronics.com

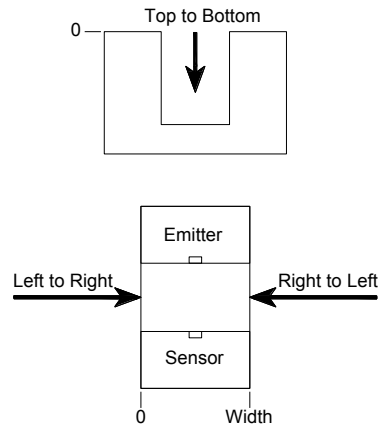
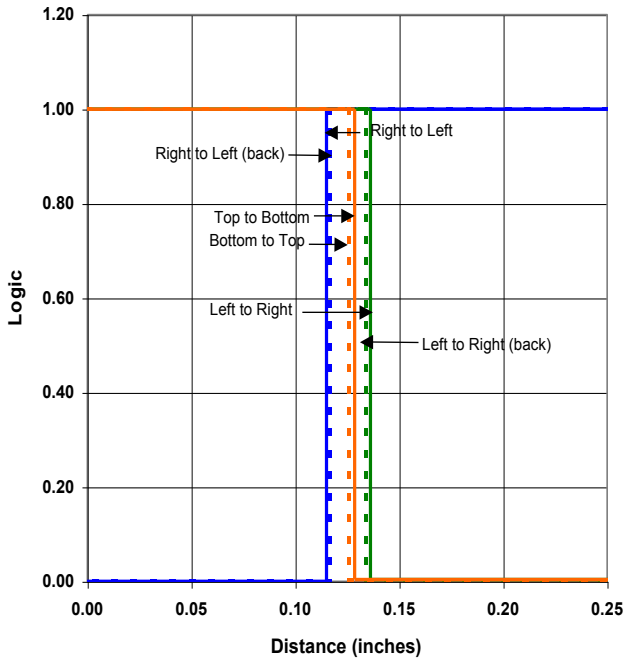
**OPB916B - Flag Next to Emitter**



**OPB916B - Flag Next to Sensor**



**OPB916B - Flag in Middle of Slot**



General Note  
 TT Electronics reserves the right to make changes in product specification without notice or liability. All information is subject to TT Electronics' own data and is considered accurate at time of going to print.

OPTEK Technology, Inc.  
 1645 Wallace Drive, Carrollton, TX 75006 | Ph: +1 972 323 2200  
[www.optekinc.com](http://www.optekinc.com) | [www.ttelectronics.com](http://www.ttelectronics.com)



Компания «Life Electronics» занимается поставками электронных компонентов импортного и отечественного производства от производителей и со складов крупных дистрибьюторов Европы, Америки и Азии.

С конца 2013 года компания активно расширяет линейку поставок компонентов по направлению коаксиальный кабель, кварцевые генераторы и конденсаторы (керамические, пленочные, электролитические), за счёт заключения дистрибьюторских договоров

Мы предлагаем:

- Конкурентоспособные цены и скидки постоянным клиентам.
- Специальные условия для постоянных клиентов.
- Подбор аналогов.
- Поставку компонентов в любых объемах, удовлетворяющих вашим потребностям.
- Приемлемые сроки поставки, возможна ускоренная поставка.
- Доставку товара в любую точку России и стран СНГ.
- Комплексную поставку.
- Работу по проектам и поставку образцов.
- Формирование склада под заказчика.
- Сертификаты соответствия на поставляемую продукцию (по желанию клиента).
- Тестирование поставляемой продукции.
- Поставку компонентов, требующих военную и космическую приемку.
- Входной контроль качества.
- Наличие сертификата ISO.

В составе нашей компании организован Конструкторский отдел, призванный помогать разработчикам, и инженерам.

Конструкторский отдел помогает осуществить:

- Регистрацию проекта у производителя компонентов.
- Техническую поддержку проекта.
- Защиту от снятия компонента с производства.
- Оценку стоимости проекта по компонентам.
- Изготовление тестовой платы монтаж и пусконаладочные работы.



Тел: +7 (812) 336 43 04 (многоканальный)

Email: [org@lifeelectronics.ru](mailto:org@lifeelectronics.ru)