



Grove - HCHO Sensor

Release date : 9/20/2015

Version : 1.0

Wiki: [http://www.seeedstudio.com/wiki/Breakout - 3-Axis Analog Accelerometer ADXL335](http://www.seeedstudio.com/wiki/Breakout_-_3-Axis_Analog_Accelerometer_ADXL335)

Bazaar: <http://www.seeedstudio.com/depot/Grove-3Axis-Analog-Accelerometer-p-1086.html>

Document Revision History

Revision	Date	Author	Description
1.0	Sep 21, 2015	Victor.He	Create file

Contents

Document Revision History.....	2
1. Introduction	2
2. Features.....	3
3. Application Ideas.....	4
4. Usage.....	5
5. Resources	8
6. Support.....	9

Disclaimer

For physical injuries and possessions loss caused by those reasons which are not related to product quality, such as operating without following manual guide, natural disasters or force majeure, we take no responsibility for that.

Under the supervision of Seeed Technology Inc., this manual has been compiled and published which covered the latest product description and specification. The content of this manual is subject to change without notice.

Copyright

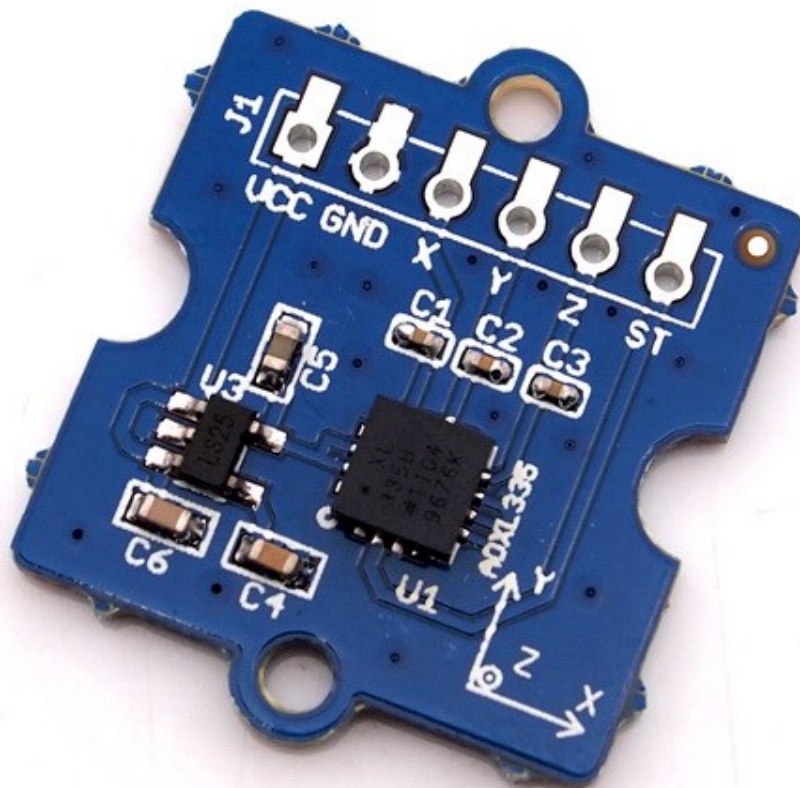
The design of this product (including software) and its accessories is under tutelage of laws. Any action to violate relevant right of our product will be penalized through law. Please consciously observe relevant local laws in the use of this product.

1. Introduction

The ADXL335 is a small, thin, low power, complete 3-axis accelerometer with signal conditioned voltage outputs. The product measures acceleration with a minimum full-scale range of ± 3 g.

The module was designed as breakout board because ADXL335's signal is analog(more ports requested). But the board outline is grove module that you can fix it conveniently like other groves.

The sensor combined 3.3 and 5V power supply, can be used in standard Arduino device and Seeduino Stalker. The following program code includes first-order filter which can make the output smoothly if the sensor was used in robot or toy car.



2. Features

- Wide power range DC3V to 5V
- Grove outline
- 3 axis sensing
- Small, low-profile package: $4 \times 4 \times 1.45$ mm LFCSP
- Low power $350\mu\text{A}$ at 3V (typical)
- High sensitive
- 10,000 g shock survival
- BW adjustment with a single capacitor per axis
- RoHS/WEEE lead-free compliant

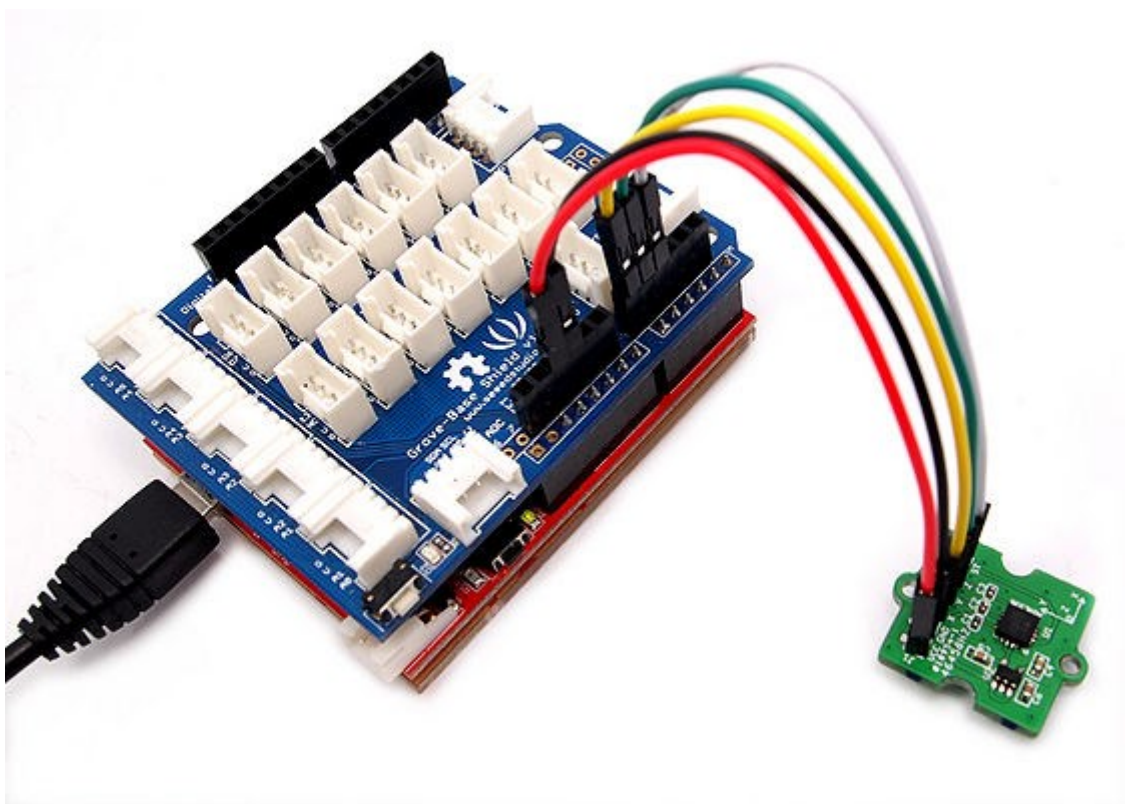
3. Application Ideas

- Motion Sensor
- Shock detector
- Vibration sensor
- Toy car
- Robot

4. Usage

The sensor's outline is breakout board, you can welding wire in the board or use jumper wire to connect the sensor.

- The VCC connect to power source (DC5V or DC3.3V) , GND to ground, X to Arduino analog port A0, Y to A1, Z to A2.

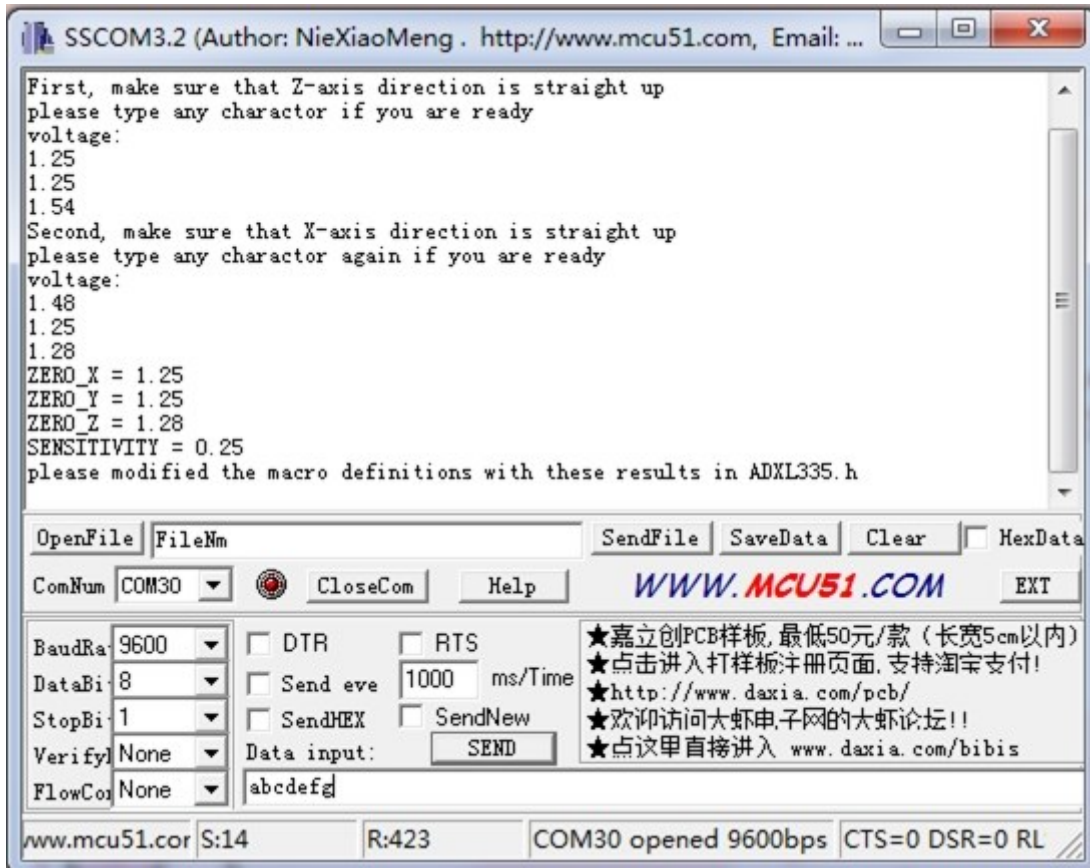


- Download the [File: 3-Axis Analog Accelerometer Library](#) and Unzip it into the libraries file of Arduino IDE by the path: ..\arduino-1.0.1\libraries.
- Regulate the sensor

The sensor is analog device, you should regulate the sensor before combining it to you system.

Step 1:Open the Demo: Calibration and upload it to Arduino.Please click [here](#) if you do not know how to upload.

Step 2: Open your serial monitor, make sure the sensor is connected. Follow the axis institutions printed on sensor's board. First, make sure that Z-axis direction is straight up, please type any character if you are ready. Change the sensor position, repeat the above operation to obtain X-axis and Y-axis direction are straight up .



Step 3: You can get these value as show above. Please modified the macro definitions with these results in ADXL335.h

```

25 #ifndef ADXL335_H
26 #define ADXL335_H
27
28 #include <Arduino.h>
29 /*macro definitions of Analog read pins*/
30 #define X_AXIS_PIN A0
31 #define Y_AXIS_PIN A1
32 #define Z_AXIS_PIN A2
33
34 #define ADC_AMPLITUDE 1024//amplitude of the 10bit-ADC of Arduino is 1024LSB
35 #define ADC_REF 5 //ADC reference is 5v
36 #define ZERO_X 1.22 //acceleration of X-AXIS is 0g, the voltage of X-AXIS is 1.22v
37 #define ZERO_Y 1.22 //
38 #define ZERO_Z 1.25 //
39 #define SENSITIVITY 0.25 //sensitivity of X/Y/Z axis is 0.25v/g
40
41 class ADXL335
42 {
43 private:
44     void pinsInit();
45     float scale;
46 public:
47     void begin();
48     void getXYZ(int16_t *x,int16_t *y,int16_t *z);
49     void getAcceleration(float *ax,float *ay,float *az);
50 };

```

Now the calibration has been completed.

- Downloading the demo code: Measuring Acceleration, then open serial monitor, turn the sensor any angle, you can see the digital angle value sent from the accelerometer to the monitor.



5. Resources

[Grove - 3-Axis Analog Accelerometer Eagle File](#)

[3-Axis Analog Accelerometer Library](#)

[github repository for 3-Axis Analog Accelerometer](#)

[ADXL335 datasheet.pdf](#)

6. Support

If you have questions or other better design ideas, you can go to our [forum](#) or [wish](#) to discuss.

Компания «Life Electronics» занимается поставками электронных компонентов импортного и отечественного производства от производителей и со складов крупных дистрибьюторов Европы, Америки и Азии.

С конца 2013 года компания активно расширяет линейку поставок компонентов по направлению коаксиальный кабель, кварцевые генераторы и конденсаторы (керамические, пленочные, электролитические), за счёт заключения дистрибьюторских договоров

Мы предлагаем:

- Конкурентоспособные цены и скидки постоянным клиентам.
- Специальные условия для постоянных клиентов.
- Подбор аналогов.
- Поставку компонентов в любых объемах, удовлетворяющих вашим потребностям.
- Приемлемые сроки поставки, возможна ускоренная поставка.
- Доставку товара в любую точку России и стран СНГ.
- Комплексную поставку.
- Работу по проектам и поставку образцов.
- Формирование склада под заказчика.
- Сертификаты соответствия на поставляемую продукцию (по желанию клиента).
- Тестирование поставляемой продукции.
- Поставку компонентов, требующих военную и космическую приемку.
- Входной контроль качества.
- Наличие сертификата ISO.

В составе нашей компании организован Конструкторский отдел, призванный помогать разработчикам, и инженерам.

Конструкторский отдел помогает осуществить:

- Регистрацию проекта у производителя компонентов.
- Техническую поддержку проекта.
- Защиту от снятия компонента с производства.
- Оценку стоимости проекта по компонентам.
- Изготовление тестовой платы монтаж и пусконаладочные работы.



Тел: +7 (812) 336 43 04 (многоканальный)

Email: org@lifeelectronics.ru