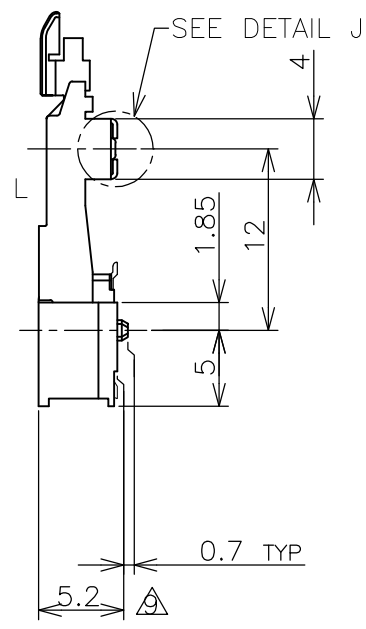
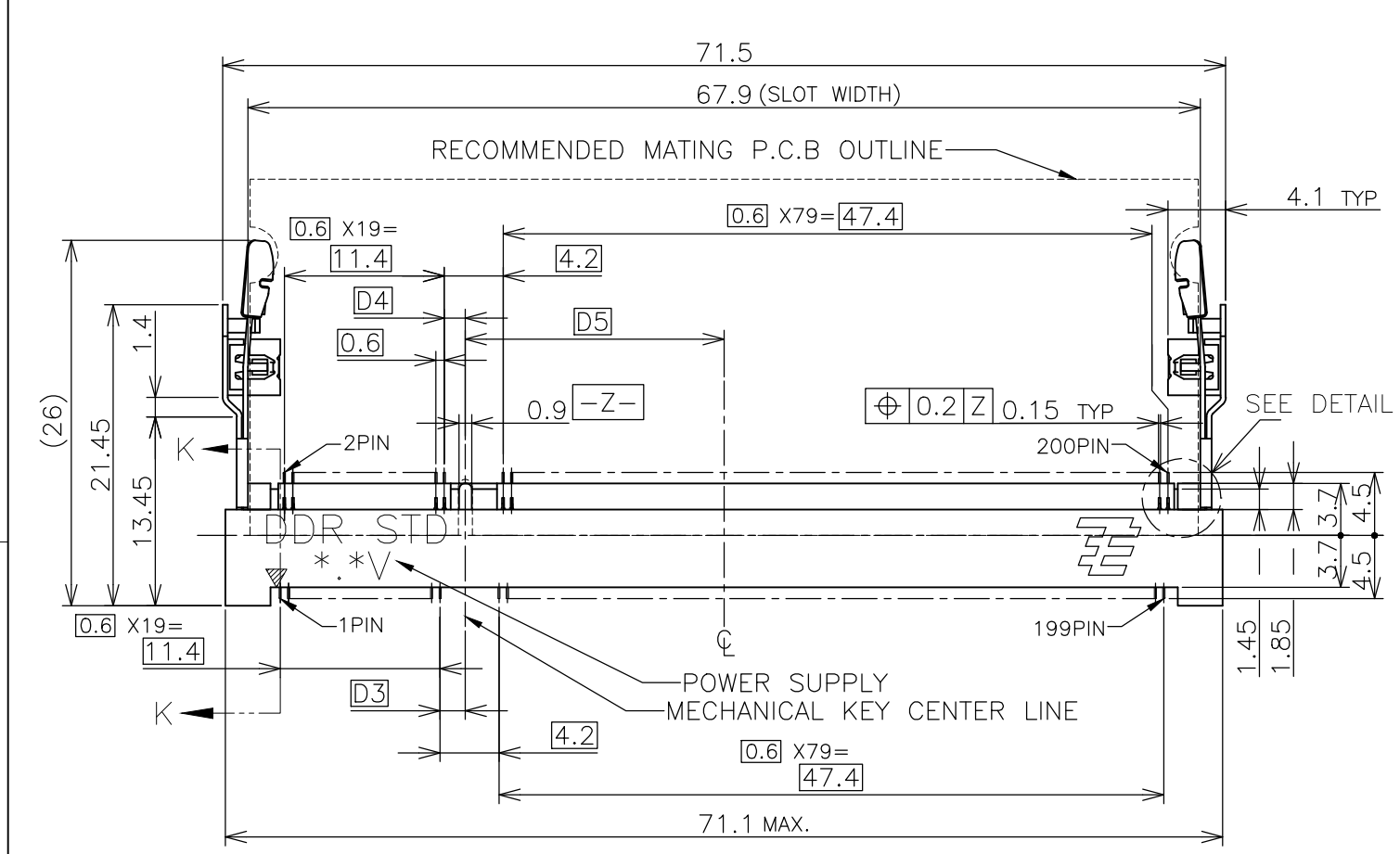
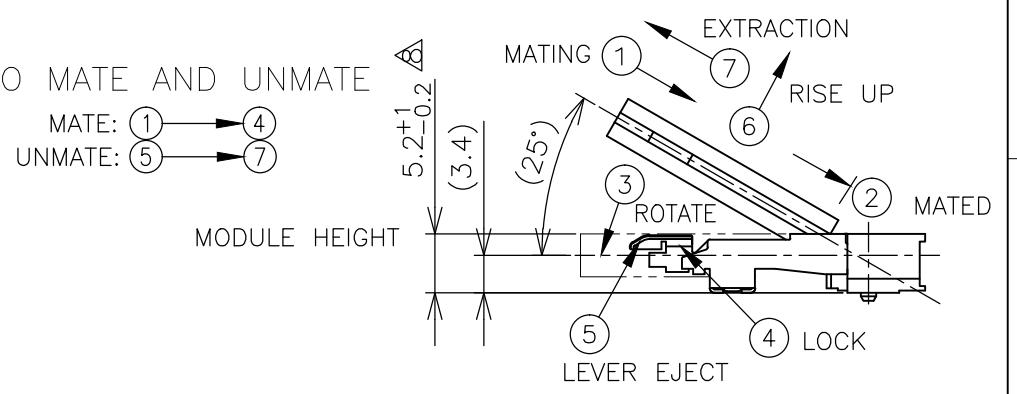
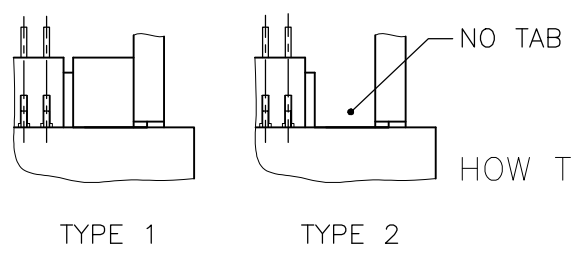
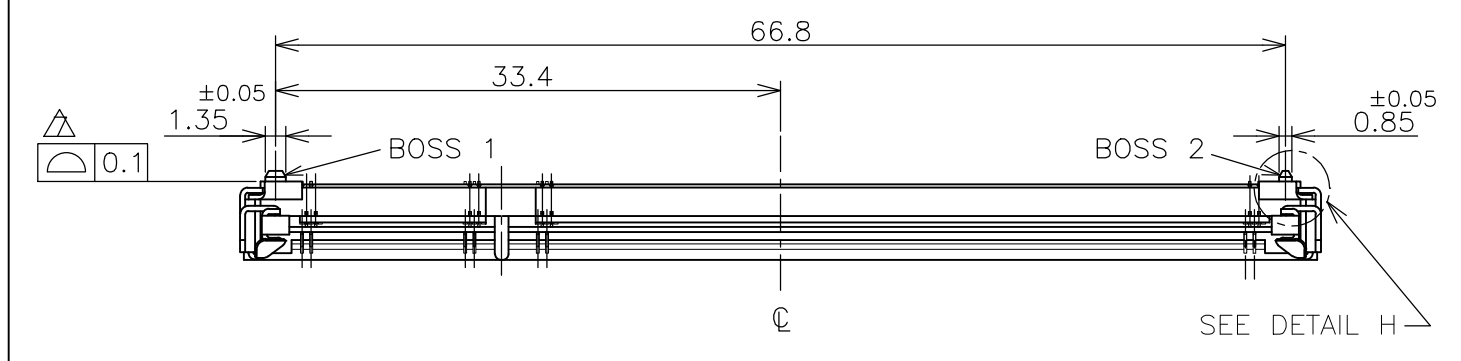
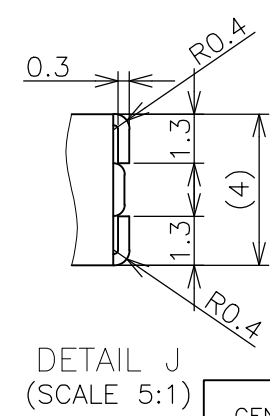
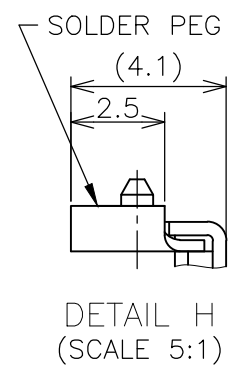
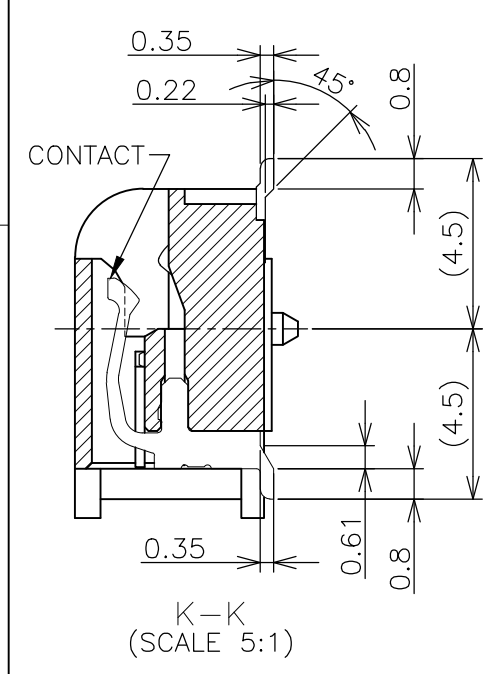


THIS DRAWING IS UNPUBLISHED. RELEASED FOR PUBLICATION NOV. 2001.
 © COPYRIGHT 2001 By - ALL RIGHTS RESERVED.

| LOC | DIST | REVISIONS | | | |
|-----|------|---------------------------|---------|-----|------|
| P | LTR | DESCRIPTION | DATE | DWN | APVD |
| J | | | | | |
| | J3 | REVISED PER ECR-16-002212 | 15FEB16 | S.Z | S.L |



- (APPLIED TO SHEET 1-2)
- MATERIAL ; HOUSING: HIGH TEMPERATURE THERMO PLASTIC UL94V-0
CONTACT: COPPER ARROY
LOCK LEVER: STAINLESS STEEL
SOLDER PEG: COPPER ARROY
 - FINISH ; CONTACT AREA: GOLD FLASH ON 0.0013MIN ALL OVER NICKEL.
SOLDERING AREA: GOLD FLASH PLT.
SOLDER PEG: TIN PLATING.
 - MECHANICAL KEY POSITION OF CONNECTOR SEE TABLE.
 - TOLERANCES NON-CUMULATIVE.
 - NOT TO SCALE.
 - INSIDE MUST BE RESIST COAT EXCEPT SOLDER PATTERN.
 - COPLANARITY : 0.1 MAX.
 - THE FLOATING VALUE BY SOLDERING IS NOT INCLUDED.
 - NOT MATING CONDITION.
 - FINISH ; CONTACT AREA: 0.00076 GOLD ON 0.0013MIN ALL OVER NICKEL.
SOLDERING AREA: 0.00076 GOLD PLT.
SOLDER PEG: TIN PLATING.
- 11 IF THE MODULE DOESN'T INSERT AND LOCK IN THE LATCH SMOOTHLY, OPEN WIDE BOTH LATCHES BY MANUAL. AND THE MODULE MUST BE INSERTED AND LOCKED IN THE LATCH.



GENERAL TOLERANCE
 10 ≥ : ±0.2
 30 ≥ > 10 : ±0.25
 100 ≥ > 30 : ±0.3
 ANGLES : ±3°

| TYPE | FINISH | TOOLING STATUS | REMARK | POWER SUPPLY (TYPE) | D5 | D4 | D3 | POS | PART NO. |
|--------|--------|----------------|-----------------------------|---------------------|-------|-----|-----|-----|-------------|
| TYPE 1 | △ | AVAILABLE | —H— | 2.5V (DDR1) | 18.45 | 1.5 | 1.8 | 200 | 1473005-5 |
| TYPE 2 | △ | AVAILABLE | BOSSLess | 1.8V (DDR2) | 17.55 | 2.4 | 2.7 | 200 | 1-1473005-4 |
| TYPE 2 | △ | AVAILABLE | —H— | 1.8V (DDR2) | 17.55 | 2.4 | 2.7 | 200 | 1473005-4 |
| TYPE 1 | △ | AVAILABLE | HOUSING COLOR:GRAY BOSSLess | 2.5V (DDR1) | 18.45 | 1.5 | 1.8 | 200 | 6-1473005-1 |
| TYPE 1 | △ | AVAILABLE | BOSSLess | 2.5V (DDR1) | 18.45 | 1.5 | 1.8 | 200 | 1-1473005-1 |
| TYPE 1 | △ | AVAILABLE | —H— | 2.5V (DDR1) | 18.45 | 1.5 | 1.8 | 200 | 1473005-1 |

THIS DRAWING IS A CONTROLLED DOCUMENT.

| | | |
|------|--------|---------|
| DWN | B.WONG | 15JUL10 |
| CHK | C.WANG | 15JUL10 |
| APVD | S.YAO | 15JUL10 |

STE TE Connectivity

DDR1 & DDR2 SODIMM SOCKET
 0.6mm PITCH 200POS
 STANDARD PROFILE STANDARD TYPE

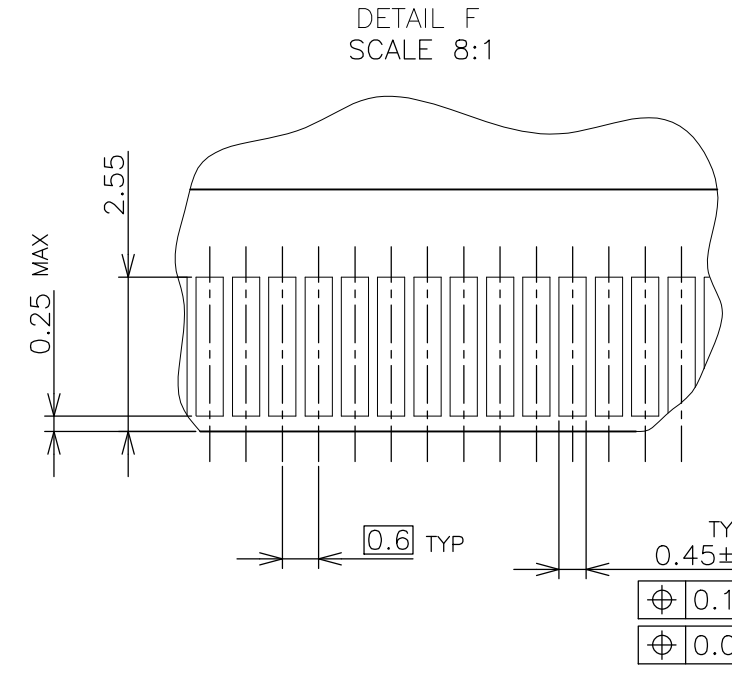
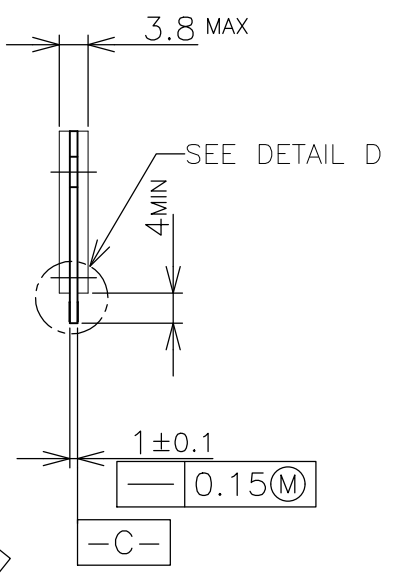
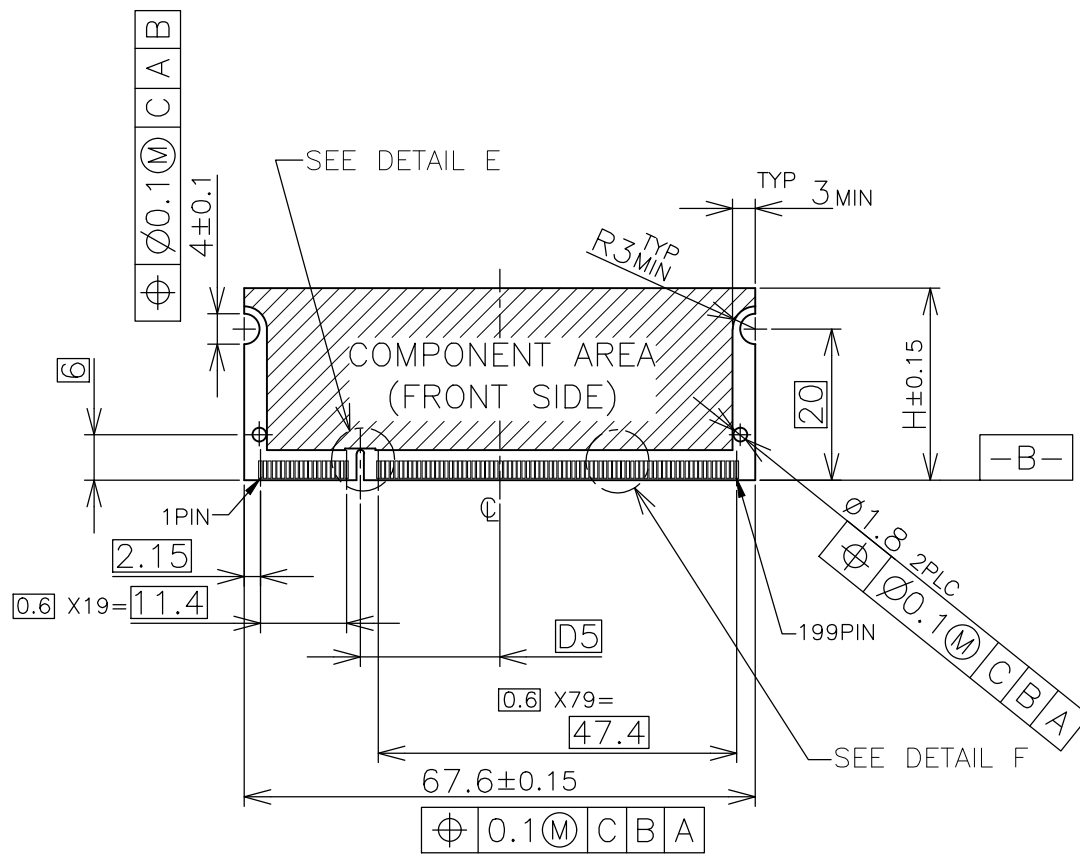
| | |
|------------------|----------|
| PRODUCT SPEC | 108-5701 |
| APPLICATION SPEC | |
| WEIGHT | 4.7g |

SIZE: A3 CAGE CODE: 00779 DRAWING NO: C-1473005 RESTRICTED TO: -

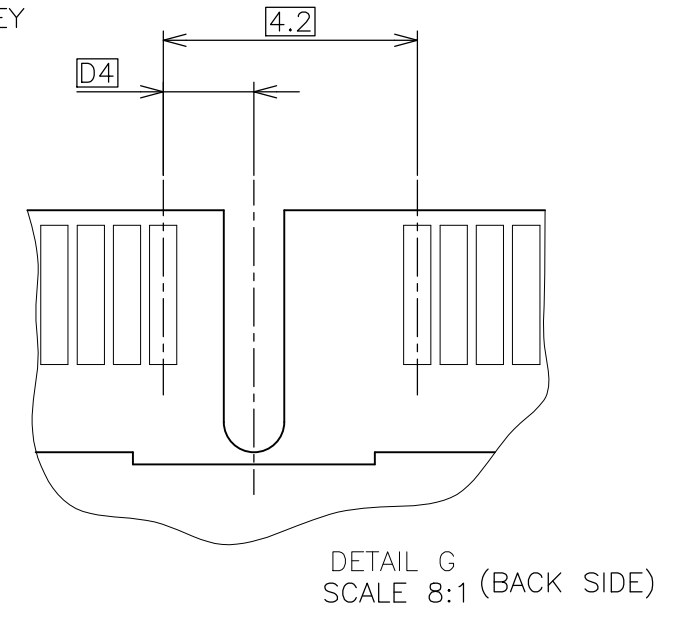
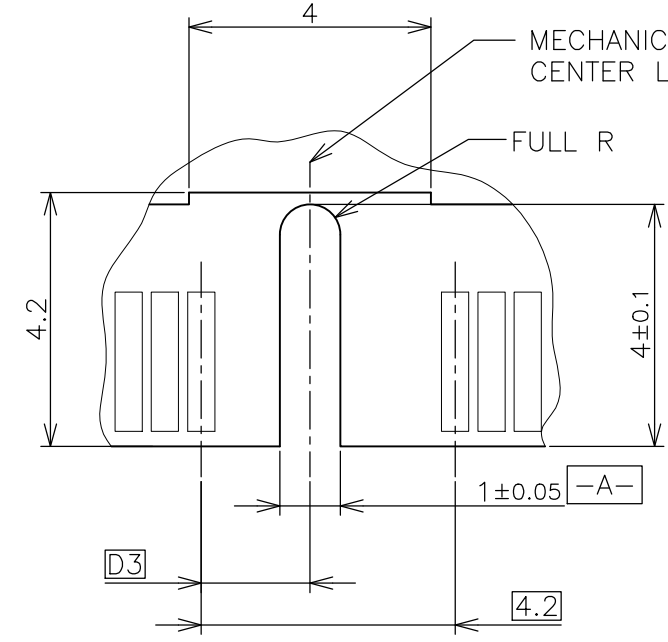
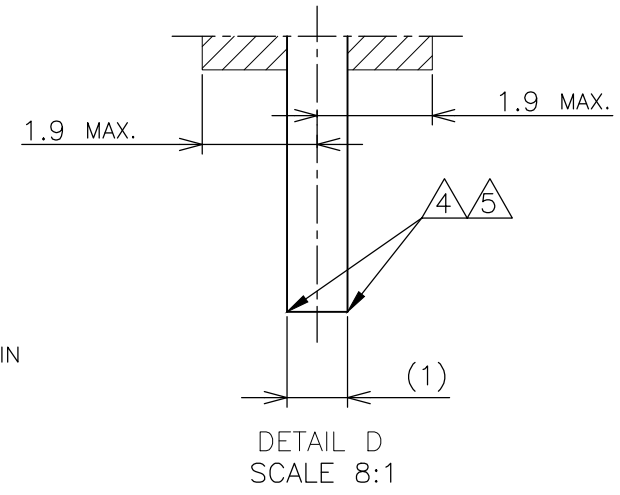
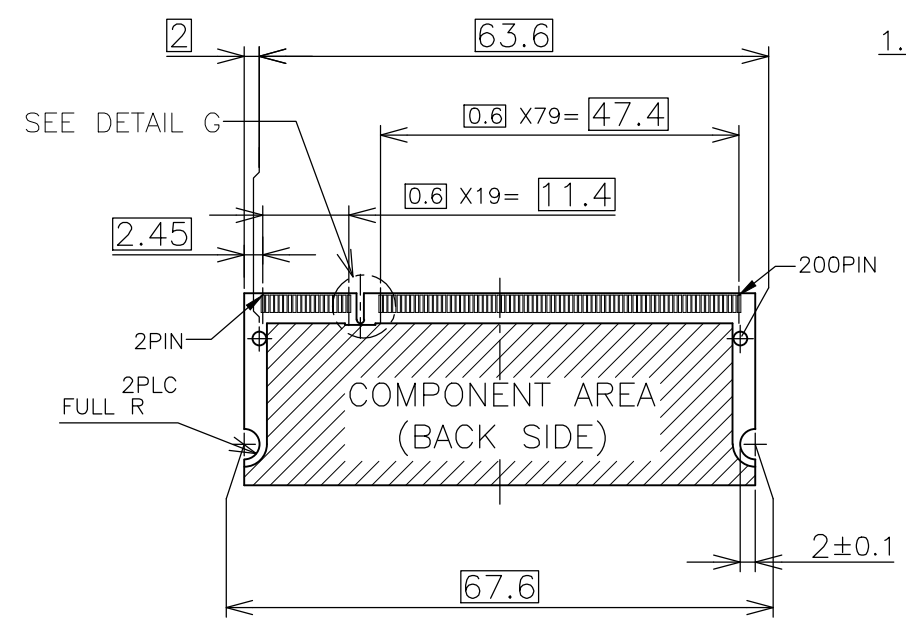
CUSTOMER DRAWING SCALE: 2:1 SHEET: 1 OF 4 REV: J3

THIS DRAWING IS UNPUBLISHED. RELEASED FOR PUBLICATION NOV ,2001.
 © COPYRIGHT 2001 By - ALL RIGHTS RESERVED.

| LOC | DIST | REVISIONS | | | |
|-----|------|-------------|------|-----|------|
| P | LTR | DESCRIPTION | DATE | DWN | APVD |
| J | | SEE SHEET 1 | - | - | - |



- (APPLIED TO SHEET 3)
1. TOLERANCES ON ALL DIMENSIONS ±0.15 UNLESS OTHERWISE SPECIFIED.
 2. P.C. BOARD THICKNESS APPLIES ACROSS TABS AND INCLUDES PLATING AND/OR METALIZATION.
 3. FINISH OF PAD : GOLD PLATING 0.00076 MIN. OVER Ni PLATING 0.002MIN.
- NO BURR
 CHAMFER 0.25 MAX x 45° IF EXIST.



RECOMMENDED MATING P.C.B CONFIGURATION

| | | |
|--|--------|------------------|
| THIS DRAWING IS A CONTROLLED DOCUMENT. | | DWN |
| DIMENSIONS: MM | | CHK |
| TOLERANCES UNLESS OTHERWISE SPECIFIED: | | APVD |
| 0 PLC | ± | PRODUCT SPEC |
| 1 PLC | ± | APPLICATION SPEC |
| 2 PLC | ± | WEIGHT |
| 3 PLC | ± | |
| 4 PLC | ± | |
| ANGLES | ± | |
| MATERIAL | FINISH | |

| | | | | |
|-------|--------------|-------|-----|-----|
| 31.75 | 1.8V | 17.55 | 2.4 | 2.7 |
| 25.4 | 2.5V | 18.45 | 1.5 | 1.8 |
| H | POWER SUPPLY | D5 | D4 | D3 |

STE TE Connectivity

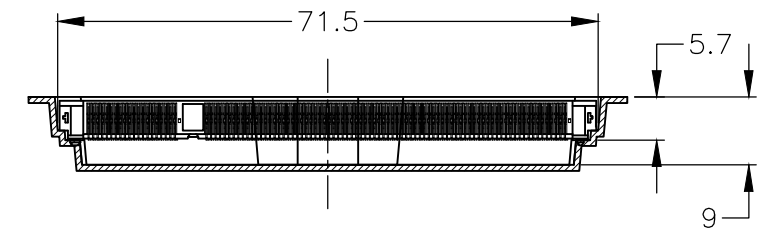
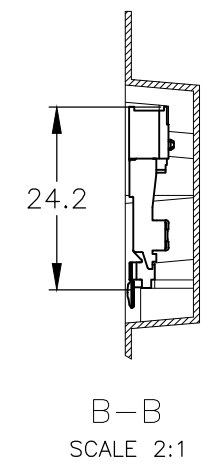
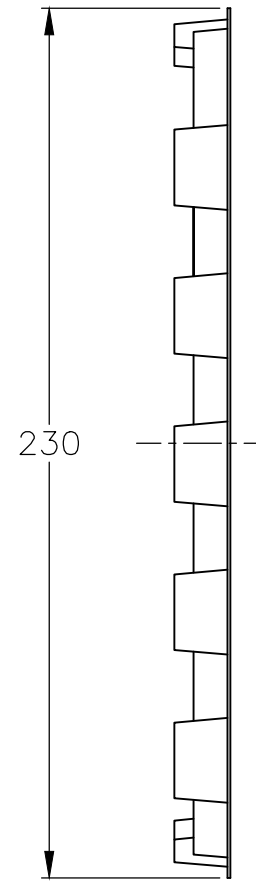
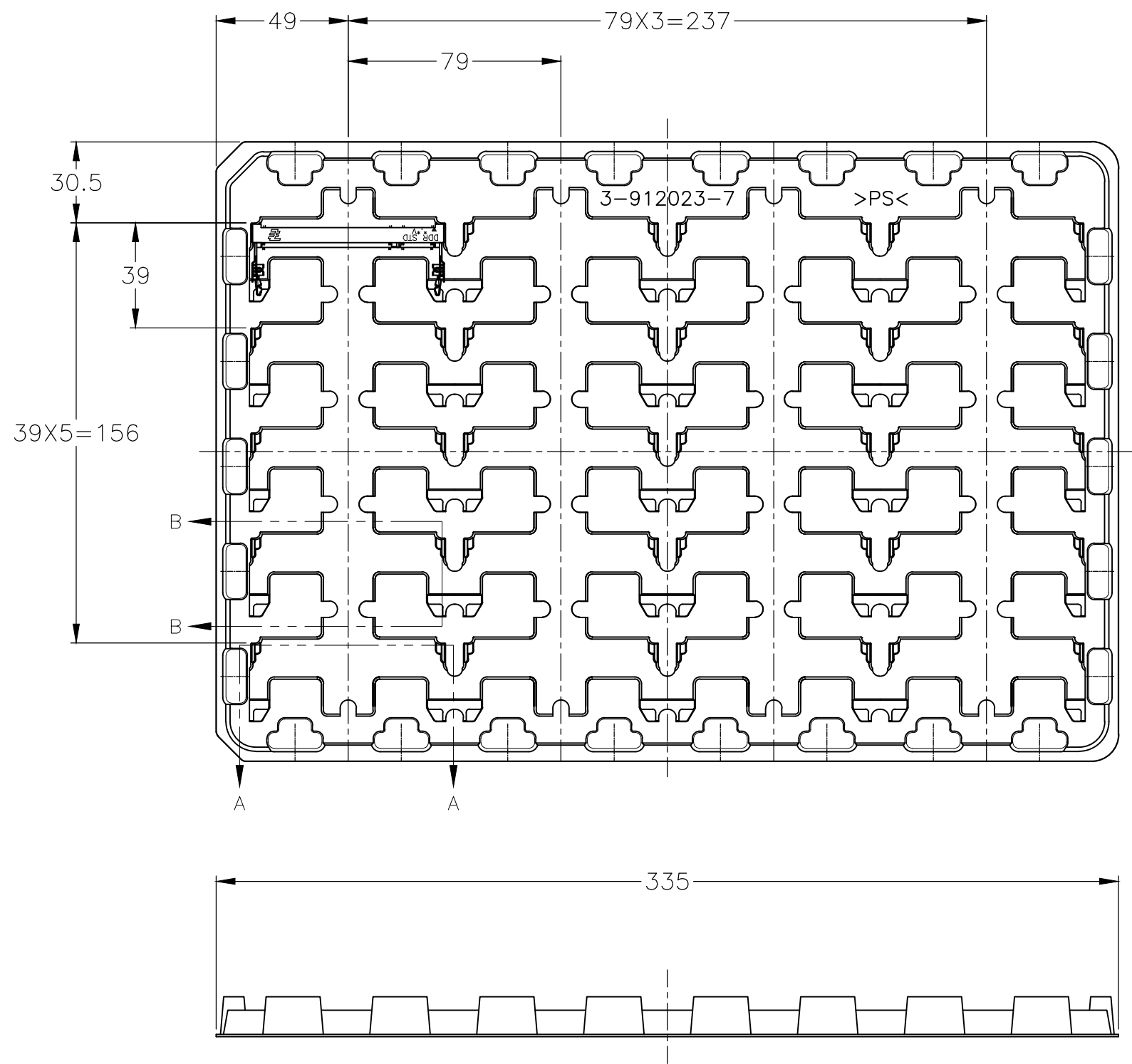
NAME: DDR1 & DDR2 SODIMM SOCKET
 0.6mm PITCH 200POS
 STANDARD PROFILE STANDARD TYPE

| | | | |
|------|-----------|------------|---------------|
| SIZE | CAGE CODE | DRAWING NO | RESTRICTED TO |
| A3 | 00779 | C-1473005 | - |

CUSTOMER DRAWING SCALE 2:1 SHEET 3 OF 4 REV J3

THIS DRAWING IS UNPUBLISHED. RELEASED FOR PUBLICATION NOV , 2001.
 © COPYRIGHT 2001 By - ALL RIGHTS RESERVED.

| LOC | DIST | REVISIONS | | | |
|-----|------|-------------|------|-----|------|
| P | LTR | DESCRIPTION | DATE | DWN | APVD |
| J | | SEE SHEET 1 | - | - | - |



| | | |
|---------------------|-----------|-------------|
| 2.5V (DDR1) | 20EA/TRAY | 1473005-5 |
| 1.8V (DDR2) | 20EA/TRAY | 1-1473005-4 |
| 1.8V (DDR2) | 20EA/TRAY | 1473005-4 |
| 2.5V (DDR1) | 20EA/TRAY | 6-1473005-1 |
| 2.5V (DDR1) | 20EA/TRAY | 1-1473005-1 |
| 2.5V (DDR1) | 20EA/TRAY | 1473005-1 |
| POWER SUPPLY (TYPE) | QTY | P/N |

(APPLIED TO SHEET 4)
 1. THE DIRECTION OF EACH CONNECTOR ON A TRAY IS REFERRED TO THIS DRAWING.
 2. GENERAL TOLERANCE: ±0.5

| | | | | | |
|---|--|------------------|--|--|--|
| THIS DRAWING IS A CONTROLLED DOCUMENT. | | DWN | | TE Connectivity NAME: DDR1 & DDR2 SODIMM SOCKET 0.6mm PITCH 200POS STANDARD PROFILE STANDARD TYPE | |
| DIMENSIONS: MM | | CHK | | | |
| TOLERANCES UNLESS OTHERWISE SPECIFIED: | | APVD | | | |
| 0 PLC ± 1 PLC ± 2 PLC ± 3 PLC ± 4 PLC ± ANGLES ± FINISH ± | | PRODUCT SPEC | | | |
| MATERIAL | | WEIGHT | | RESTRICTED TO | |
| | | CUSTOMER DRAWING | | SIZE: A3 CAGE CODE: 00779 DRAWING NO: C-1473005 | |
| | | SCALE: 1:2 | | SHEET: 4 OF 4 REV: J3 | |

Компания «Life Electronics» занимается поставками электронных компонентов импортного и отечественного производства от производителей и со складов крупных дистрибьюторов Европы, Америки и Азии.

С конца 2013 года компания активно расширяет линейку поставок компонентов по направлению коаксиальный кабель, кварцевые генераторы и конденсаторы (керамические, пленочные, электролитические), за счёт заключения дистрибьюторских договоров

Мы предлагаем:

- Конкурентоспособные цены и скидки постоянным клиентам.
- Специальные условия для постоянных клиентов.
- Подбор аналогов.
- Поставку компонентов в любых объемах, удовлетворяющих вашим потребностям.
- Приемлемые сроки поставки, возможна ускоренная поставка.
- Доставку товара в любую точку России и стран СНГ.
- Комплексную поставку.
- Работу по проектам и поставку образцов.
- Формирование склада под заказчика.
- Сертификаты соответствия на поставляемую продукцию (по желанию клиента).
- Тестирование поставляемой продукции.
- Поставку компонентов, требующих военную и космическую приемку.
- Входной контроль качества.
- Наличие сертификата ISO.

В составе нашей компании организован Конструкторский отдел, призванный помогать разработчикам, и инженерам.

Конструкторский отдел помогает осуществить:

- Регистрацию проекта у производителя компонентов.
- Техническую поддержку проекта.
- Защиту от снятия компонента с производства.
- Оценку стоимости проекта по компонентам.
- Изготовление тестовой платы монтаж и пусконаладочные работы.



Тел: +7 (812) 336 43 04 (многоканальный)

Email: org@lifeelectronics.ru