



**Delivering streamlined behind-panel routings with MT, MPO/MTP\* interfaces and IP67-sealed harsh-environmental protection with LC interfaces, Optical Electro Magnetic Interference (EMI) Shielding Adapters are ideal in networking and industrial applications**

Optical Electro Magnetic Interference (EMI) shielding adapters are designed to address mechanical-design requirements limiting EMI and Radio Frequency Interference (RFI) emissions from front panels or enclosures. The adapters are constructed of either all diecast housings or as a half die-cast, half polymer housing.

Housings have an EMI gasket that seals the adapters to the panel. EMI adapters increase the shielding effectiveness while enhancing the front-panel aesthetics compared to traditional plastic adapters.

**Features and Benefits**

**MPO to MT/ HMBT™ and IP67 Sealed LC to LC Adapters**

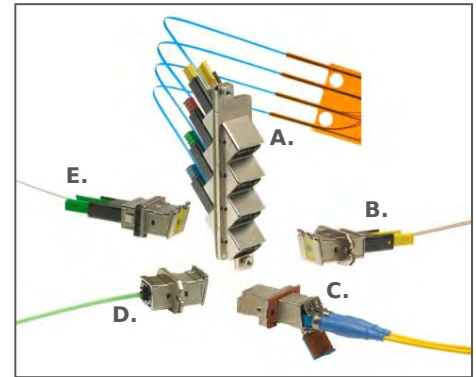
MPO (MTP*) front-interface to MT or HMBT™ back-interface adapter styles (106114 only)	Provide flexibility in fiber routing and reduce space requirements inside the box
IP67 sealed, ruggedized duplex LC interface adapters with latching shutters (106127-0100 and 10627-0110 only)	Shutter latches to compress the seal and protect from moisture and dust ingress. Provides harsh-environment sealing

**All EMI Adapters**

Metal die-cast housings	Provide Electro Magnetic Interference (EMI) protection
EMI gaskets included	Provide Electro Magnetic Interference (EMI) seal between the adapter and mounting surface
Safety shutters included	Provides dust protection, eye safety and reduces EMI when no connector is installed
Screw- and snap-mount styles available	Provides mounting flexibility
Single and multiple-port adapter design (accepts one or four connectors)	Provides for design flexibility
Ceramic or phosphor bronze alignment sleeves (where applicable)	Accommodate singlemode (SM) and multimode (MM) performance

**Optical EMI Shielding Adapters**

- 106114** MPO/MTP\* to MT or HMBT™ Adapters
- 106127** LC Duplex to LC Duplex Sealed Ruggedized Adapter
- 106114** MPO Adapter
- 106115** LC Duplex Adapters
- 106116** SC Adapter
- 106123** LC Quad Adapters



A. MPO (MTP\*) to HMBT™ Quad Adapter  
 B. MPO (MTP\*) to HMBT™ Simplex Adapter with Shutter  
 C. LC Duplex Sealed Adapter with Latching Shutter  
 D. MPO (MTP\*) to MT Simplex Adapter with Shutter  
 E. MPO (MTP\*) to HMBT™ Simplex Adapter with Shutter



MPO (MTP\*) Adapters Series numbers  
 106115 LC Duplex Adapters  
 106116 SC Adapter  
 106123 LC Quad Adapters

\* MTP is a registered trademark of US Conec, Inc.

### Specifications

#### Reference Information

Packaging:

MTP tray, LC bag

Mates With:

MPO (MTP\*), LC duplex connectors

Use With:

Optical Cable Assemblies and  
FlexPlane™ Optical Circuitry

Designed In: Millimeters

RoHS: Yes

Halogen Free: Yes

#### Mechanical

Durability (min.):

200 mates and de-mates

#### Physical

Housing:

Metal (Zinc) for EMI versions

Alignment Sleeve:

Phosphor Bronze or Zirconia

Ceramic

Plating:

Electro-less Nickel

Operating Temperature:

-40 to +85°C

### Applications

Telecommunication Applications

- Data Centers
- Hubs
- Servers
- Routers

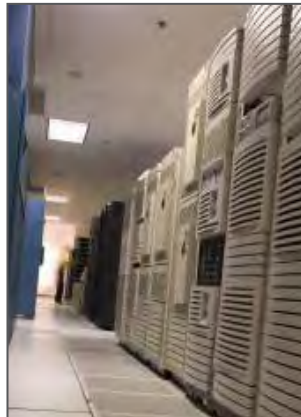
Industrial Applications

- Test equipment

Aerospace/Defense Applications

Storage

- ATM equipment
- Gigabit Ethernet testing equipment



High-End Servers



ATM Equipment

**MPO (MTP\*) to MT and HBMT™ Adapters**

Order No.	Cable Type	Mount Style	Shutter	Front Interface	Back Interface
106114-1150	Simplex	Screw	One Side	MPO (MTP*)	MT
106114-1160		Staggered Screw			
106114-1510		Screw			
106114-1520		Snap			HBMT™ Clip
106114-1530	Quad				
106127-0100	Duplex	Screw	Latching	LC Duplex Ruggedized	LC Duplex Ruggedized, Ceramic Alignment Sleeve with IP67 Sealed Gasket
106127-0110					LC Duplex Ruggedized, Phosphor Bronze Alignment Sleeve with IP67 Sealed Gasket

**LC EMI Adapters**

Order No.	Cable Type	Mount Style	Mount Angle	Shutter	Mount From	
106115-3100	Duplex	Screw	45°	One Side	Front	
106115-4100		Snap				
106115-1100		Screw	Straight	None		
106115-1110				One Side		
106115-1120				Two Sides		
106115-2100				None		
106115-2110		Snap	Straight	One Side		
106115-2120				Two Sides		
106115-3200		Single Screw	45°	One Side		Rear
106123-0500		Snap	Straight			Front
106123-0600	Screw					
106123-0700						

**MPO EMI Adapters**

Order No.	Cable Type	Mount Style	Mount Angle	Shutter	Mount From
106114-1100	Simplex	Screw	Straight	One Side	Front
106114-1200		Snap			
106114-3000		Screw			
106114-4000		Snap			
106114-0100		SingleScrew	45°		Rear
106114-3200	Quad	Screw		None	

**SC EMI Adapters**

Order No.	Cable Type	Mount Style	Mount Angle	Shutter	Mount From
106116-2000	Simplex	Snap	Straight	One Side	Front
106116-2100		Screw			
106116-4500		Single Screw	45°		Rear
106116-1000	SC Duplex EMI Adapter	Snap/Screw	Straight	Snap-On	Front

Компания «Life Electronics» занимается поставками электронных компонентов импортного и отечественного производства от производителей и со складов крупных дистрибьюторов Европы, Америки и Азии.

С конца 2013 года компания активно расширяет линейку поставок компонентов по направлению коаксиальный кабель, кварцевые генераторы и конденсаторы (керамические, пленочные, электролитические), за счёт заключения дистрибьюторских договоров

Мы предлагаем:

- Конкурентоспособные цены и скидки постоянным клиентам.
- Специальные условия для постоянных клиентов.
- Подбор аналогов.
- Поставку компонентов в любых объемах, удовлетворяющих вашим потребностям.
- Приемлемые сроки поставки, возможна ускоренная поставка.
- Доставку товара в любую точку России и стран СНГ.
- Комплексную поставку.
- Работу по проектам и поставку образцов.
- Формирование склада под заказчика.
- Сертификаты соответствия на поставляемую продукцию (по желанию клиента).
- Тестирование поставляемой продукции.
- Поставку компонентов, требующих военную и космическую приемку.
- Входной контроль качества.
- Наличие сертификата ISO.

В составе нашей компании организован Конструкторский отдел, призванный помогать разработчикам, и инженерам.

Конструкторский отдел помогает осуществить:

- Регистрацию проекта у производителя компонентов.
- Техническую поддержку проекта.
- Защиту от снятия компонента с производства.
- Оценку стоимости проекта по компонентам.
- Изготовление тестовой платы монтаж и пусконаладочные работы.



Тел: +7 (812) 336 43 04 (многоканальный)  
Email: [org@lifeelectronics.ru](mailto:org@lifeelectronics.ru)