



4001A Connector
Attachment



MODEL 4000A & 4001A ACCELEROMETER

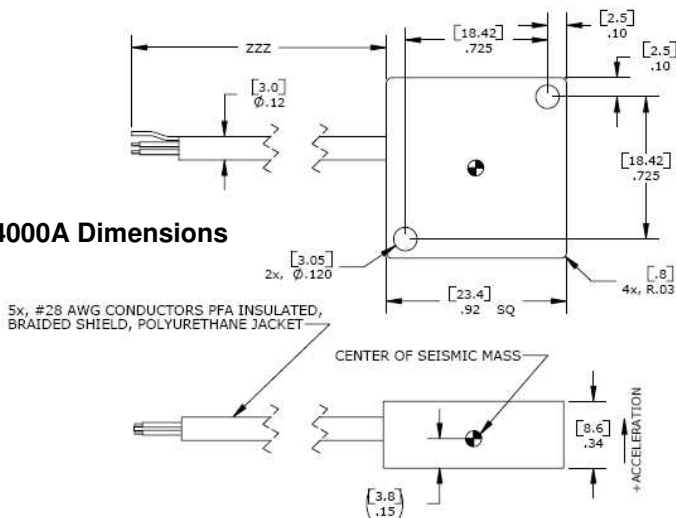
SPECIFICATIONS

- ◆ **Silicone MEMS Accelerometer**
- ◆ **Signal Conditioned Output**
- ◆ **Temperature Calibrated**
- ◆ **Low Cost, Lightweight**

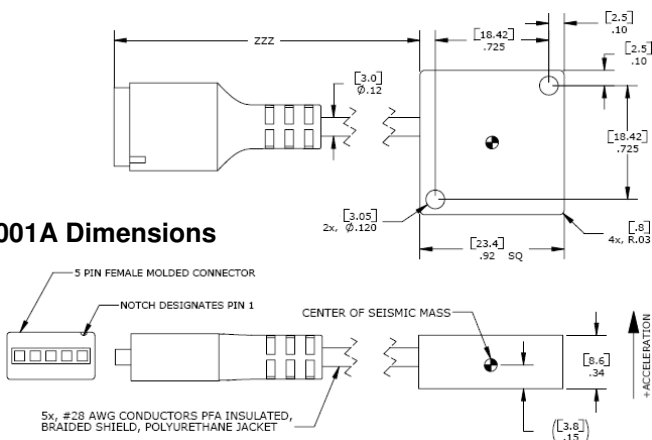
The Model 4000A & 4001A are economical signal conditioned accelerometers with integral temperature compensation. The accelerometers incorporate a 3rd generation silicon MEMS sensor providing outstanding performance. The accelerometers are packaged in a rugged aluminum housing ideal for transportation and instrumentation testing. The signal conditioned output incorporates a 2.5V reference that offers the user a differential or single-ended output.

dimensions

4000A Dimensions



4001A Dimensions



FEATURES

- ◆ **±2g to ±200g Dynamic Range**
- ◆ **High Over-Range Protection**
- ◆ **Signal Conditioned Output**
- ◆ **Low Power Consumption**
- ◆ **Lightweight**
- ◆ **Gas Damping**
- ◆ **8 to 36Vdc Excitation Voltage**

APPLICATIONS

- ◆ **Low Frequency Monitoring**
- ◆ **Transportation**
- ◆ **Vibration Sensing**
- ◆ **Test & Instrumentation**
- ◆ **Machine Control**
- ◆ **Motion Analysis**
- ◆ **Tilt**

MODEL 4000A & 4001A ACCELEROMETER

PERFORMANCE SPECIFICATIONS

All values are typical at +24°C, 80Hz and 12Vdc excitation unless otherwise stated. Measurement Specialties reserves the right to update and change these specifications without notice.

Parameters

DYNAMIC

	±2	±5	±10	±20	±50	±100	±200	Notes
Range (g)	±2	±5	±10	±20	±50	±100	±200	
Sensitivity (mV/g)	1000	400	200	100	40	20	10	
Frequency Response (Hz)	0-200	0-300	0-350	0-600	0-800	0-1300	0-1500	±5%
Natural Frequency (Hz)	700	800	1000	1500	4000	6000	8000	
Non-Linearity (%FSO)	±0.5	±0.5	±0.5	±0.5	±0.5	±0.5	±0.5	
Transverse Sensitivity (%)	<3	<3	<3	<3	<3	<3	<3	<1 Typical
Damping Ratio	0.7	0.7	0.7	0.7	0.7	0.7	0.6	
Shock Limit (g)	5000	5000	5000	5000	5000	5000	5000	

ELECTRICAL

Zero Acceleration Output (mV)	±100	±100	±100	±100	±100	±100	±100	Differential
Excitation Voltage (Vdc)	8 to 36	8 to 36	8 to 36	8 to 36	8 to 36	8 to 36	8 to 36	
Excitation Current (mA)	<5	<5	<5	<5	<5	<5	<5	
Bias Voltage (Vdc)	2.5	2.5	2.5	2.5	2.5	2.5	2.5	
Output Resistance (Ω)	<100	<100	<100	<100	<100	<100	<100	
Insulation Resistance (MΩ)	>100	>100	>100	>100	>100	>100	>100	@100Vdc
Turn On Time (msec)	<100	<100	<100	<100	<100	<100	<100	
Residual Noise (μV RMS)	500	300	300	350	400	350	400	Passband
Spectral Noise (μg/√Hz)	35	38	75	132	316	516	1033	Passband
Ground Isolation	Isolated from Mounting Surface							

ENVIRONMENTAL

Thermal Zero Shift (%FSO/°C)	±0.014	±0.014	±0.014	±0.014	±0.014	±0.014	±0.014	Typical
Thermal Sensitivity Shift (%/°C)	±0.028	±0.028	±0.028	±0.028	±0.028	±0.028	±0.028	Typical
Operating Temperature (°C)	-20 to 85							
Compensated Temperature (°C)	-20 to 85							
Storage Temperature (°C)	-40 to 90							

PHYSICAL

Case Material	Anodized Aluminum
Cable	PFA Insulated Leads, Braided Shield, PU Jacket
Weight (grams)	7
Mounting	2x #4 or M3 Screws
Mounting Torque	3 lb-in (0.3 N-m)
AWG	#28

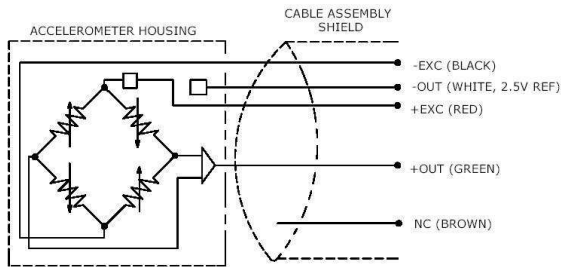
Supplied accessories: AC-D02295 Mating Pins (for model 4001A)

Optional accessories: AC-D02652 Triaxial Mounting Block
121 3-Channel Precision Low Noise DC Amplifier

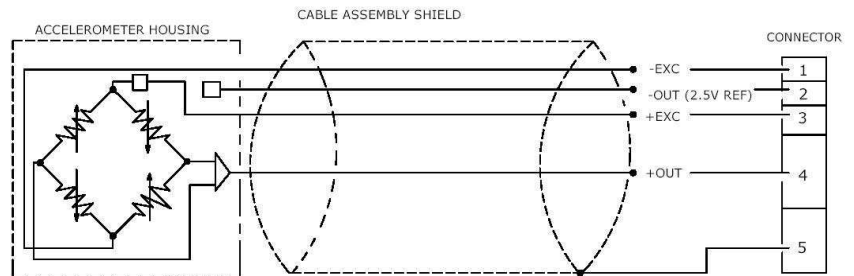
The information in this sheet has been carefully reviewed and is believed to be accurate; however, no responsibility is assumed for inaccuracies. Furthermore, this information does not convey to the purchaser of such devices any license under the patent rights to the manufacturer. Measurement Specialties, Inc. reserves the right to make changes without further notice to any product herein. Measurement Specialties, Inc. makes no warranty, representation or guarantee regarding the suitability of its product for any particular purpose, nor does Measurement Specialties, Inc. assume any liability arising out of the application or use of any product or circuit and specifically disclaims any and all liability, including without limitation consequential or incidental damages. Typical parameters can and do vary in different applications. All operating parameters must be validated for each customer application by customer's technical experts. Measurement Specialties, Inc. does not convey any license under its patent rights nor the rights of others.

SCHEMATIC

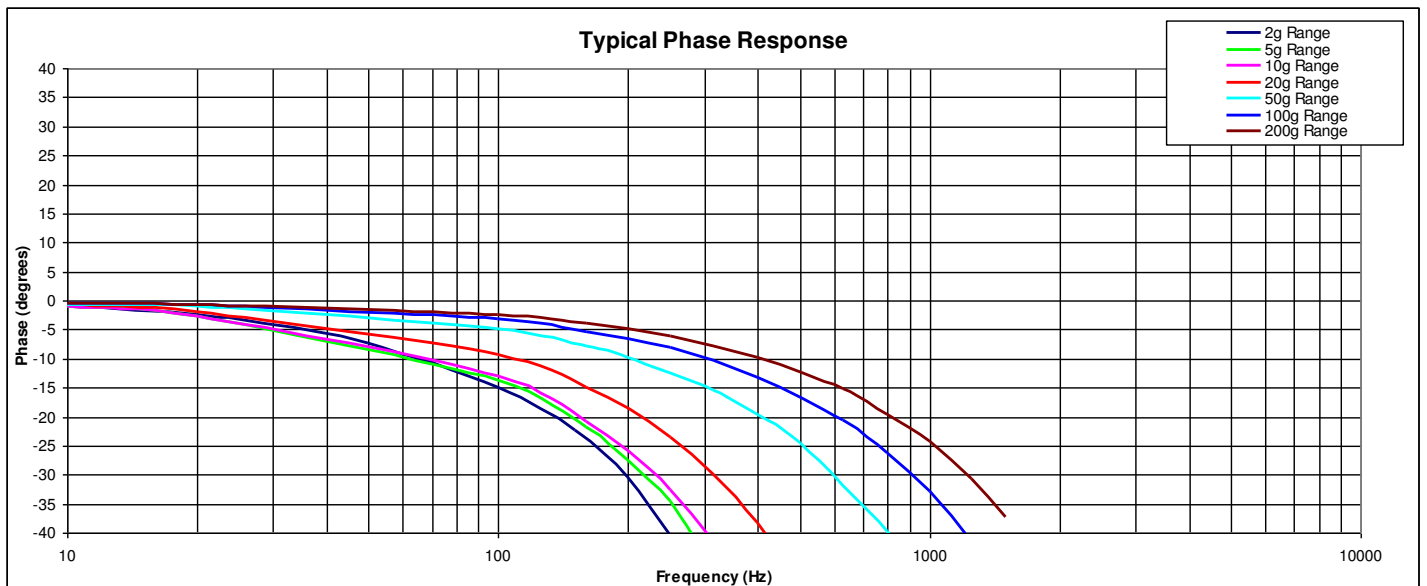
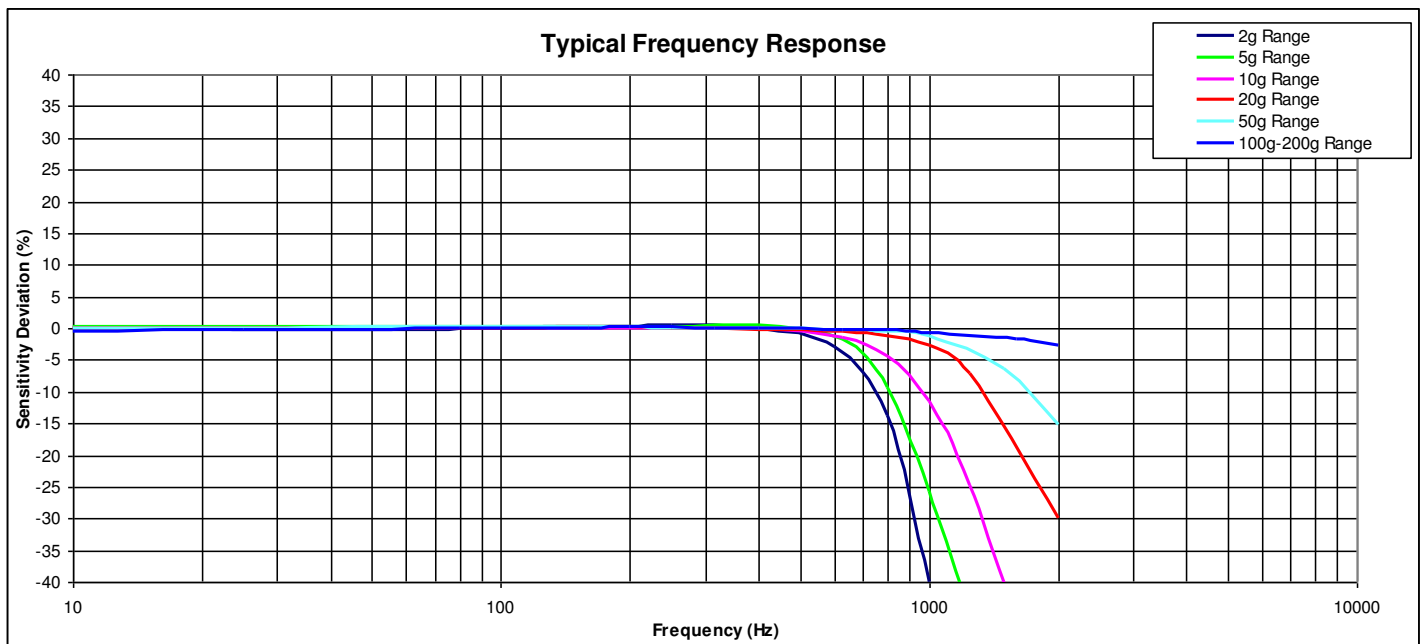
4000A Schematic



4001A Schematic



PERFORMANCE SPECIFICATIONS



ORDERING INFORMATION

4000A & 4001A	GGG	ZZZ
Series Type		
Range		
002=2g		
005=5g		
010=10g		
020=20g		
050=50g		
100=100g		
200=200g		
Cable length		
060=60 inches		
120=120 inches		
180=180 inches		
240=240 inches		
300=300 inches		
360=360 inches		
480=480 inches		
600=600 inches		
197=197 inches, 5 meters		
394=394 inches, 10 meters		

Example; 4000A-010-060
Model 4000A, 10g range, 60inch cable length

NORTH AMERICA

Measurement Specialties, Inc.,
a TE Connectivity Company
Phone: 800-522-6752
Email: customercare.hmpt@te.com

EUROPE

MEAS France SAS
a TE Connectivity Company
Phone: 800-440-5100
Email: customercare.lcsb@te.com

ASIA

Measurement Specialties (China), Ltd.,
a TE Connectivity Company
Phone: 0400-820-6015
Email: customercare.shzn@te.com

TE.com/sensorsolutions

Measurement Specialties, Inc., a TE Connectivity company.

Measurement Specialties, TE Connectivity, TE Connectivity (logo) and EVERY CONNECTION COUNTS are trademarks. All other logos, products and/or company names referred to herein might be trademarks of their respective owners.

The information given herein, including drawings, illustrations and schematics which are intended for illustration purposes only, is believed to be reliable. However, TE Connectivity makes no warranties as to its accuracy or completeness and disclaims any liability in connection with its use. TE Connectivity's obligations shall only be as set forth in TE Connectivity's Standard Terms and Conditions of Sale for this product and in no case will TE Connectivity be liable for any incidental, indirect or consequential damages arising out of the sale, resale, use or misuse of the product. Users of TE Connectivity products should make their own evaluation to determine the suitability of each such product for the specific application.

© 2015 TE Connectivity Ltd. family of companies All Rights Reserved.

Компания «Life Electronics» занимается поставками электронных компонентов импортного и отечественного производства от производителей и со складов крупных дистрибьюторов Европы, Америки и Азии.

С конца 2013 года компания активно расширяет линейку поставок компонентов по направлению коаксиальный кабель, кварцевые генераторы и конденсаторы (керамические, пленочные, электролитические), за счёт заключения дистрибьюторских договоров

Мы предлагаем:

- Конкуренспособные цены и скидки постоянным клиентам.
- Специальные условия для постоянных клиентов.
- Подбор аналогов.
- Поставку компонентов в любых объемах, удовлетворяющих вашим потребностям.
- Приемлемые сроки поставки, возможна ускоренная поставка.
- Доставку товара в любую точку России и стран СНГ.
- Комплексную поставку.
- Работу по проектам и поставку образцов.
- Формирование склада под заказчика.
- Сертификаты соответствия на поставляемую продукцию (по желанию клиента).
- Тестирование поставляемой продукции.
- Поставку компонентов, требующих военную и космическую приемку.
- Входной контроль качества.
- Наличие сертификата ISO.

В составе нашей компании организован Конструкторский отдел, призванный помогать разработчикам, и инженерам.

Конструкторский отдел помогает осуществить:

- Регистрацию проекта у производителя компонентов.
- Техническую поддержку проекта.
- Защиту от снятия компонента с производства.
- Оценку стоимости проекта по компонентам.
- Изготовление тестовой платы монтаж и пусконаладочные работы.



Тел: +7 (812) 336 43 04 (многоканальный)

Email: org@lifeelectronics.ru