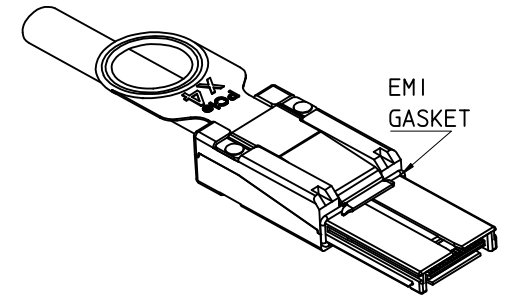


| MOLEX P/N | LENGTH | GAGE | TOLERANCE | JACKET RATING |
|-----------|----------------|------|-----------|---------------|
| 745460400 | 0.5M | 28 | 0.03M | VW1 |
| 745460401 | 1.0M | 28 | 0.05M | VW1 |
| 745460411 | 1.25M | 28 | 0.05M | VW1 |
| 745460402 | 2.0M | 28 | 0.05M | VW1 |
| 745460403 | 3.0M | 28 | 0.05M | VW1 |
| 745460404 | 4.0M | 28 | 0.10M | VW1 |
| 745460405 | 5.0M | 26 | 0.10M | CL2 |
| 745460406 | 6.0M | 26 | 0.13M | CL2 |
| 745460407 | 7.0M | 24 | 0.13M | CL2 |
| 745460408 | 8.0M Δ | 24 | 0.13M | CL2 |
| 745460409 | 9.0M Δ | 24 | 0.15M | CL2 |
| 745460410 | 10.0M Δ | 24 | 0.15M | CL2 |

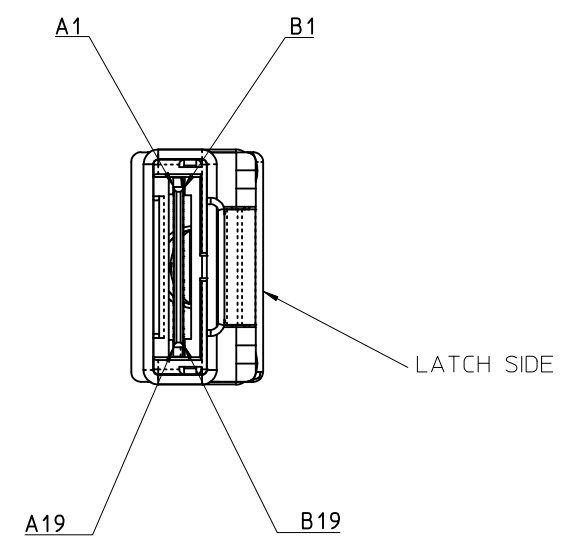
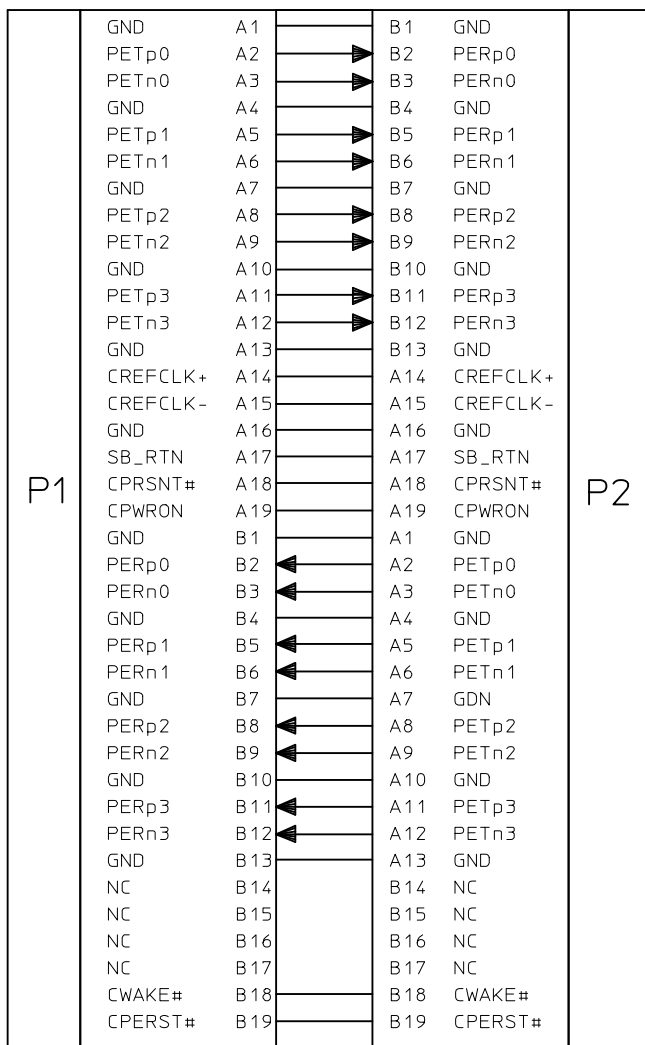


NOTES:

- MATERIAL-
BACKSHELLS - ZINC DIECAST
PULL - NYLON
CABLE JACKET RATING - SEE TABLE
 - LENGTH AND TOLERANCE - SEE TABLE
 - ELECTRICAL PERFORMANCE PER PCI EXPRESS EXTERNAL CABLING SPEC.
 - PLUG MATES TO RECEPTACLE 75586-0010, AND EMI GUIDE HOUSING ASSY.74540-0400
 - THIS PRODUCT MEETS THE RESTRICTION OF HAZARDOUS SUBSTANCES IN ELECTRICAL AND ELECTRONIC EQUIPMENT (RoHS) DIRECTIVE (2002/95/EC).
- Δ . NOT COMPLIANT WITH INSERTION LOSS SPEC. PER. THE PCIe CABLING SPEC.

| | | | | | | | | | | | |
|---|---|---|------------|----------------------------|--------------------|---|------------------------|------------------------|--|------------------------------|---------------------|
| ENTER DESCRIPTION EC NO: USY2007-0491 DRWN: JERWIN 2008/09/22 CHKD: DDOYE 2008/09/29 APPR: DDOYE 2008/09/30 | QUALITY SYMBOLS $\nabla=0$ $\nabla=0$ | GENERAL TOLERANCES (UNLESS SPECIFIED) | | DIMENSION STYLE MM ONLY | | SCALE 1:1 | DESIGN UNITS METRIC | THIRD ANGLE PROJECTION | | | |
| | | 4 PLACES \pm --- \pm --- 3 PLACES \pm --- \pm --- 2 PLACES \pm 0.13 \pm --- 1 PLACE \pm 0.25 \pm --- ANGULAR \pm 1/2° | mm INCH | DRAWN BY BREED | DATE 2005/02/02 | TITLE I-PASS X4 CABLE ASSEMBLY GEN 1 | | | | | |
| | | DRAFT WHERE APPLICABLE MUST REMAIN WITHIN DIMENSIONS | | CHECKED BY DDOYE | DATE 2005/02/02 | | | | | | |
| | | K | REV | MATERIAL NO. SEE TABLE | | APPROVED BY DDOYE | DATE 2005/02/02 | MOLEX INCORPORATED | | DOCUMENT NO. SD-74546-400 | SHEET NO. 1 OF 3 |

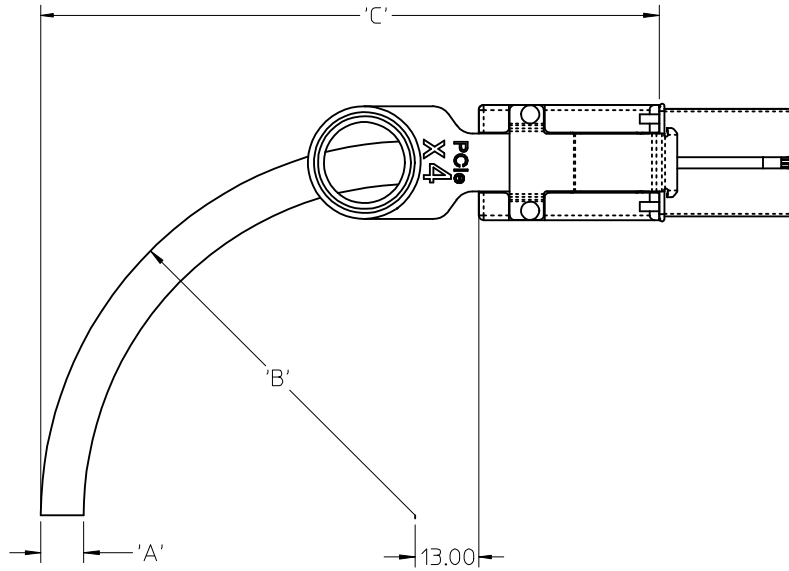
10 9 8 7 6 5 4 3 2 1



IPASS™ IS A TRADEMARK OF MOLEX

| | | | | | | | | | | | | | | |
|--|--|-------------------------|--|---------------------------------------|-----------|-----------------------------------|---|---------------------|---|---------------------------|--|--|--|--|
| ENTER DESCRIPTION EC NO: USY2007-0491 DRAWN: JERMIN CHKD: DDOYE APPR: DDOYE | 2008/09/22 2008/09/29 2008/09/30 | DESCRIPTION K | QUALITY SYMBOLS ▽=0 ▽=0 | GENERAL TOLERANCES (UNLESS SPECIFIED) | | DIMENSION STYLE MM ONLY | | SCALE 1:1 | DESIGN UNITS METRIC | THIRD ANGLE PROJECTION | | | | |
| | | | | | mm | INCH | DRAWN BY BREED | DATE 2005/02/02 | TITLE I-PASS X4 CABLE ASSEMBLY GEN 1 | | | | | |
| | | | | 4 PLACES | ± --- | ± --- | CHECKED BY DDOYE | DATE 2005/02/02 | | | | | | |
| | | | | 3 PLACES | ± --- | ± --- | APPROVED BY DDOYE | | DATE 2005/02/02 | MOLEX INCORPORATED | | | | |
| | | | | 2 PLACES | ± 0.13 | ± --- | MATERIAL NO. | | DOCUMENT NO. SD-74546-400 | | | | | |
| 1 PLACE | ± 0.25 | ± --- | DRAFT WHERE APPLICABLE MUST REMAIN WITHIN DIMENSIONS | | SEE TABLE | | THIS DRAWING CONTAINS INFORMATION THAT IS PROPRIETARY TO MOLEX INCORPORATED AND SHOULD NOT BE USED WITHOUT WRITTEN PERMISSION | | | | | | | |

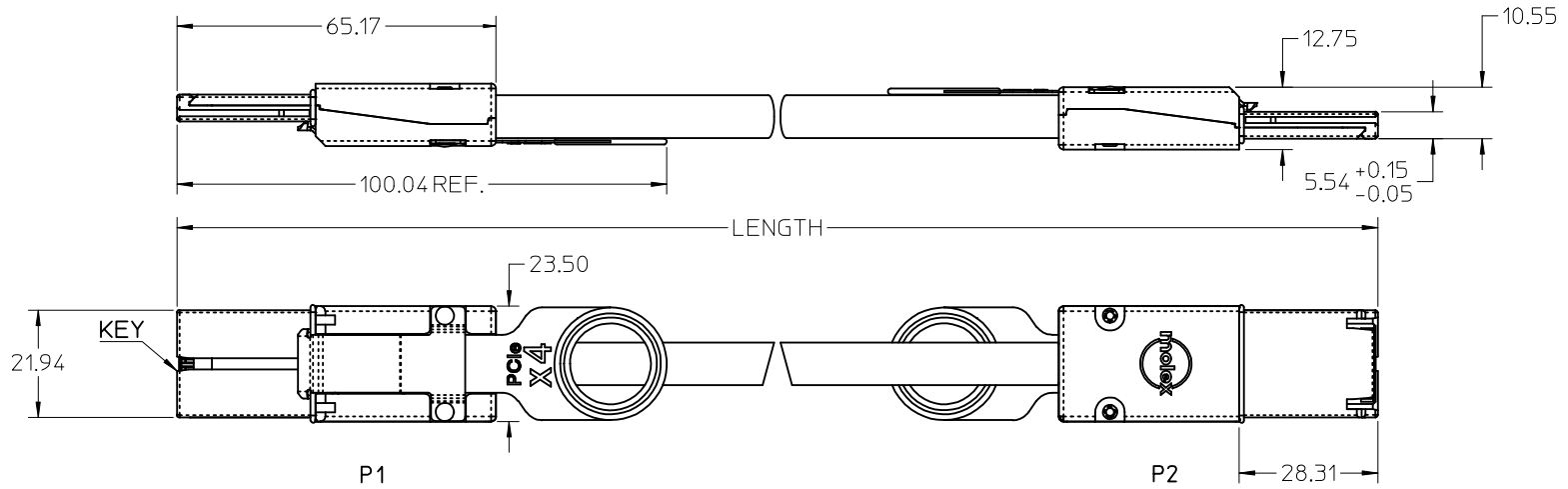
9 8 7 6 5 4 3 2 1



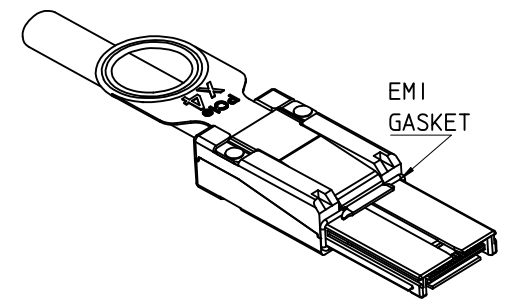
| | | | | |
|---|---------------------------|-------|-------|-------|
| | CABLE GAUGE | 24 | 26 | 28 |
| A | CABLE DIAMETER | 10.54 | 9.53 | 8.75 |
| B | MINIMUM OUTER RADIUS | 42.00 | 38.00 | 35.00 |
| C | FACEPLATE TO OUTER RADIUS | 91.86 | 87.86 | 84.86 |

IPASS™ IS A TRADEMARK OF MOLEX

| | | | | | | | | | |
|--|--------------------------------------|--|----------------------|-----------------------------------|---|---|------------------------------|------------------------|---------------------|
| ENTER DESCRIPTION EC NO: USY2007-0491 DRWN: JERWIN 2008/09/22 CHKD: DDOYE 2008/09/29 APPR: DDOYE 2008/09/30 | QUALITY SYMBOLS ▽=0 ▽=0 | GENERAL TOLERANCES (UNLESS SPECIFIED) | | DIMENSION STYLE MM ONLY | | SCALE 1:1 | DESIGN UNITS METRIC | THIRD ANGLE PROJECTION | |
| | | 4 PLACES ± --- ± --- | DRAWN BY BREED | DATE 2005/02/02 | TITLE I-PASS X4 CABLE ASSEMBLY GEN 1 | | | | |
| | | 3 PLACES ± --- ± --- | CHECKED BY DDOYE | DATE 2005/02/02 | | | | | |
| | | 2 PLACES ± 0.13 ± --- | APPROVED BY DDOYE | DATE 2005/02/02 | MATERIAL NO. | | DOCUMENT NO. SD-74546-400 | | SHEET NO. 3 OF 3 |
| 1 PLACE ± 0.25 ± --- | | ANGULAR ± 1/2° | | SEE TABLE | | THIS DRAWING CONTAINS INFORMATION THAT IS PROPRIETARY TO MOLEX INCORPORATED AND SHOULD NOT BE USED WITHOUT WRITTEN PERMISSION | | | |
| DRAFT WHERE APPLICABLE MUST REMAIN WITHIN DIMENSIONS | | | | | | | | | |



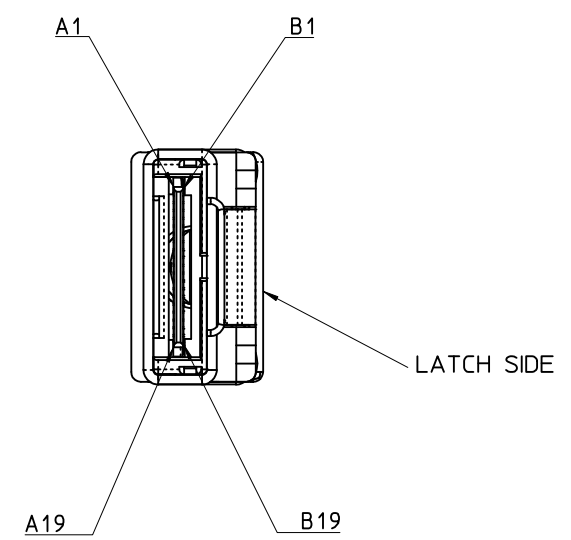
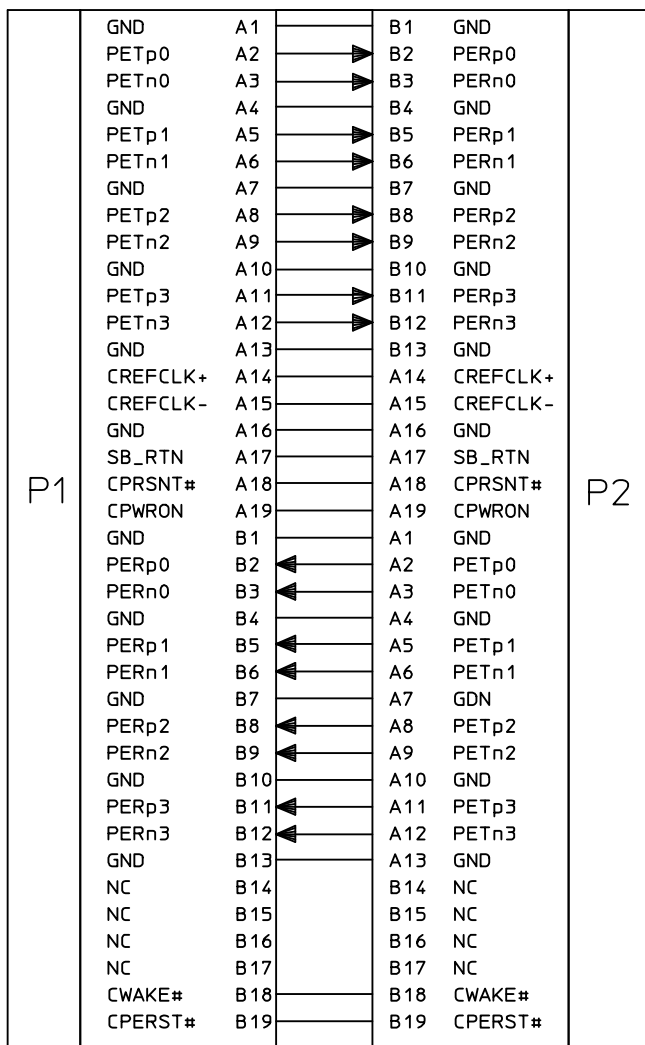
| MOLEX P/N | LENGTH | GAGE | TOLERANCE | JACKET RATING |
|-----------|----------------|------|-----------|---------------|
| 745460400 | 0.5M | 28 | 0.03M | VW1 |
| 745460401 | 1.0M | 28 | 0.05M | VW1 |
| 745460411 | 1.25M | 28 | 0.05M | VW1 |
| 745460402 | 2.0M | 28 | 0.05M | VW1 |
| 745460403 | 3.0M | 28 | 0.05M | VW1 |
| 745460404 | 4.0M | 28 | 0.10M | VW1 |
| 745460405 | 5.0M | 26 | 0.10M | CL2 |
| 745460406 | 6.0M | 26 | 0.13M | CL2 |
| 745460407 | 7.0M | 24 | 0.13M | CL2 |
| 745460408 | 8.0M Δ | 24 | 0.13M | CL2 |
| 745460409 | 9.0M Δ | 24 | 0.15M | CL2 |
| 745460410 | 10.0M Δ | 24 | 0.15M | CL2 |
| 745460415 | 15.0M Δ | 24 | 0.15M | CL2 |



- NOTES:
- MATERIAL - BACKSHELLS - ZINC DIECAST
PULL - NYLON
CABLE JACKET RATING - SEE TABLE
 - LENGTH AND TOLERANCE - SEE TABLE
 - ELECTRICAL PERFORMANCE PER PCI EXPRESS EXTERNAL CABLING SPEC.
 - PLUG MATES TO RECEPTACLE 75586-0010, AND EMI GUIDE HOUSING ASSY.74540-0400
 - THIS PRODUCT MEETS THE RESTRICTION OF HAZARDOUS SUBSTANCES IN ELECTRICAL AND ELECTRONIC EQUIPMENT (RoHS) DIRECTIVE (2002/95/EC).
- Δ . NOT COMPLIANT WITH INSERTION LOSS SPEC. PER. THE PCIe CABLING SPEC.

| | | | | | | |
|--|--------------------------|--|------------------------------|------------|---|--|
| ADDED P/N EC NO: USY2009-0263 DRWN: JERWIN 2009/01/08 CHKD: BSCHOSTER 2009/01/08 APPR: DDOYE 2009/01/12 REV | QUALITY SYMBOLS | GENERAL TOLERANCES (UNLESS SPECIFIED) | DIMENSION STYLE | SCALE | DESIGN UNITS | THIRD ANGLE PROJECTION |
| | $\nabla=0$ $\nabla=0$ | mm | MM ONLY | 1:1 | METRIC | TITLE I-PASS X4 CABLE ASSEMBLY GEN 1 |
| | | INCH | MM ONLY | DRAWN BY | DATE | |
| | | | 4 PLACES \pm --- \pm --- | BREED | 2005/02/02 | |
| | | 3 PLACES \pm --- \pm --- | CHECKED BY | DATE | | |
| | | 2 PLACES \pm 0.13 \pm --- | DDOYE | 2005/02/02 | | |
| | | 1 PLACE \pm 0.25 \pm --- | APPROVED BY | DATE | | |
| | | ANGULAR \pm 1/2° | DDOYE | 2005/02/02 | | |
| | | DRAFT WHERE APPLICABLE MUST REMAIN WITHIN DIMENSIONS | MATERIAL NO. | SEE TABLE | | |
| | | | SIZE | B | THIS DRAWING CONTAINS INFORMATION THAT IS PROPRIETARY TO MOLEX INCORPORATED AND SHOULD NOT BE USED WITHOUT WRITTEN PERMISSION | |

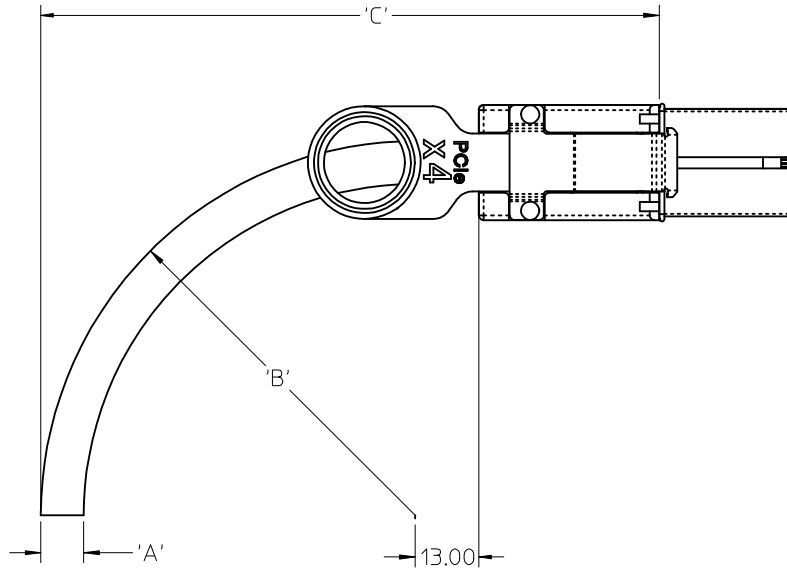
10 9 8 7 6 5 4 3 2 1



I-PASS™ IS A TRADEMARK OF MOLEX

| | | | | | | | | | | |
|---|--------------------|-------------------------------|---|----------------------|-----------------------------------|--|-------------------------------------|-------------------------------|------------------------|--|
| ADDED P/N EC NO: USY2009-0263 DRAWN: JERMIN 2009/01/08 CHKD: HSCHOESTER 2009/01/08 APPR: DDOYE 2009/01/12 | DESCRIPTION REV | QUALITY SYMBOLS ▽=0 ▽=0 | GENERAL TOLERANCES (UNLESS SPECIFIED) | | DIMENSION STYLE MM ONLY | | SCALE 1:1 | DESIGN UNITS METRIC | THIRD ANGLE PROJECTION | |
| | | 4 PLACES ± --- ± --- | mm INCH | DRAWN BY BREED | DATE 2005/02/02 | TITLE I-PASS X4 CABLE ASSEMBLY GEN 1 | | | | |
| | | 3 PLACES ± --- ± --- | 2 PLACES ± 0.13 ± --- | CHECKED BY DDOYE | DATE 2005/02/02 | | | | | |
| | | 1 PLACE ± 0.25 ± --- | ANGULAR ± 1/2° | APPROVED BY DDOYE | DATE 2005/02/02 | MATERIAL NO. SEE TABLE | DOCUMENT NO. SD-74546-400 | SHEET NO. 2 OF 3 | | |
| DRAFT WHERE APPLICABLE MUST REMAIN WITHIN DIMENSIONS | | | THIS DRAWING CONTAINS INFORMATION THAT IS PROPRIETARY TO MOLEX INCORPORATED AND SHOULD NOT BE USED WITHOUT WRITTEN PERMISSION | | | | | | | |

9 8 7 6 5 4 3 2 1



| CABLE GAUGE | 24 | 26 | 28 |
|-----------------------------|-------|-------|-------|
| A CABLE DIAMETER | 10.54 | 9.53 | 8.75 |
| B MINIMUM OUTER RADIUS | 42.00 | 38.00 | 35.00 |
| C FACEPLATE TO OUTER RADIUS | 91.86 | 87.86 | 84.86 |

IPASS™ IS A TRADEMARK OF MOLEX

| | | | | | | | |
|--|-----------------|--|--|---|--------------------------------------|------------------------------------|---------------------|
| ADDED P/N EC NO: USY2009-0263 DRWN: JERWIN 2009/01/08 CHKD: BSCHOESTER 2009/01/08 APPR: DDOYE 2009/01/12 | QUALITY SYMBOLS | GENERAL TOLERANCES (UNLESS SPECIFIED) | DIMENSION STYLE | SCALE | DESIGN UNITS | THIRD ANGLE PROJECTION | |
| | ▼=0 ∇=0 | mm INCH 4 PLACES ± --- ± --- 3 PLACES ± --- ± --- 2 PLACES ± 0.13 ± --- 1 PLACE ± 0.25 ± --- ANGULAR ± 1/2° | MM ONLY | 1:1 | METRIC | ☉ □ THIRD ANGLE PROJECTION | |
| | DESCRIPTION | DRAFT WHERE APPLICABLE MUST REMAIN WITHIN DIMENSIONS | DRAWN BY DATE BREED 2005/02/02 CHECKED BY DATE DDOYE 2005/02/02 APPROVED BY DATE DDOYE 2005/02/02 | TITLE | I-PASS X4 CABLE ASSEMBLY GEN 1 | | |
| | REV | | MATERIAL NO. | SEE TABLE | DOCUMENT NO. | MOLEX INCORPORATED SD-74546-400 | |
| | | | SIZE B | THIS DRAWING CONTAINS INFORMATION THAT IS PROPRIETARY TO MOLEX INCORPORATED AND SHOULD NOT BE USED WITHOUT WRITTEN PERMISSION | | | SHEET NO. 3 OF 3 |

Компания «Life Electronics» занимается поставками электронных компонентов импортного и отечественного производства от производителей и со складов крупных дистрибьюторов Европы, Америки и Азии.

С конца 2013 года компания активно расширяет линейку поставок компонентов по направлению коаксиальный кабель, кварцевые генераторы и конденсаторы (керамические, пленочные, электролитические), за счёт заключения дистрибьюторских договоров

Мы предлагаем:

- Конкуренеспособные цены и скидки постоянным клиентам.
- Специальные условия для постоянных клиентов.
- Подбор аналогов.
- Поставку компонентов в любых объемах, удовлетворяющих вашим потребностям.
- Приемлемые сроки поставки, возможна ускоренная поставка.
- Доставку товара в любую точку России и стран СНГ.
- Комплексную поставку.
- Работу по проектам и поставку образцов.
- Формирование склада под заказчика.
- Сертификаты соответствия на поставляемую продукцию (по желанию клиента).
- Тестирование поставляемой продукции.
- Поставку компонентов, требующих военную и космическую приемку.
- Входной контроль качества.
- Наличие сертификата ISO.

В составе нашей компании организован Конструкторский отдел, призванный помогать разработчикам, и инженерам.

Конструкторский отдел помогает осуществить:

- Регистрацию проекта у производителя компонентов.
- Техническую поддержку проекта.
- Защиту от снятия компонента с производства.
- Оценку стоимости проекта по компонентам.
- Изготовление тестовой платы монтаж и пусконаладочные работы.



Тел: +7 (812) 336 43 04 (многоканальный)

Email: org@lifeelectronics.ru